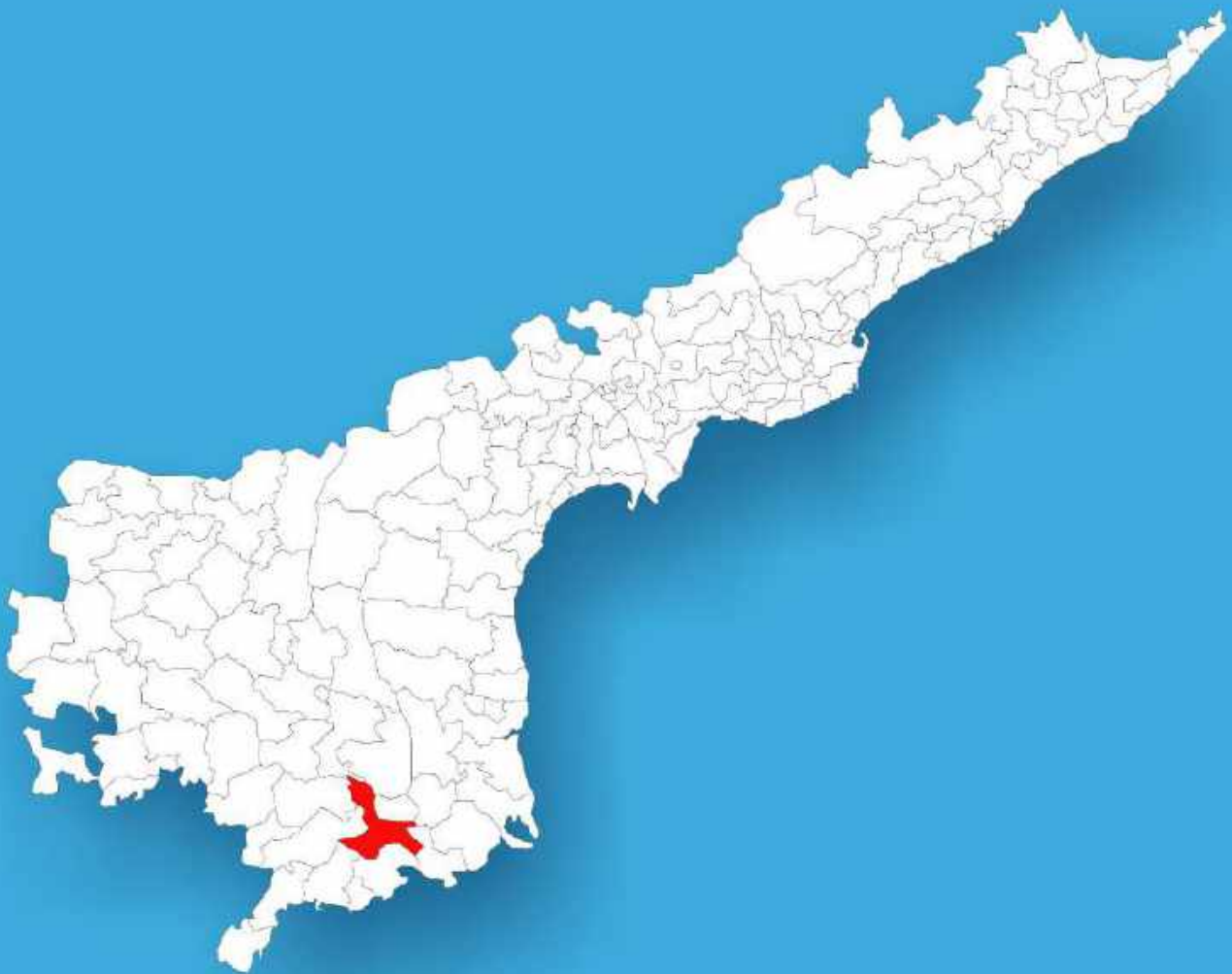




Andhra Pradesh

# Assembly Factbook™

Chandragiri Assembly Constituency



Key Electoral Data of Chandragiri  
Assembly Constituency (Vidhan Sabha)

Andhra Pradesh  
**Assembly Factbook**<sup>TM</sup>  
Chandragiri Assembly Constituency



Chandragiri Vidhan Sabha

## **Editor & Director**

Dr. R.K. Thukral

## **Research Editor**

Dr. Shafeeq Rahman

## **Compiled, Researched and Published by Datanet India Pvt. Ltd.**

D-100, 1st Floor,

Okhla Industrial Area, Phase-I,  
New Delhi- 110020.

Ph.: 91-11- 43580781-84

Email : support@indiastatpublications.com

Website : www.indiastatelections.com

## **Online Book Store :**

www.indiastatpublications.com

**Report No. :** AFB/AP-166-0125

**ISBN :** 978-93-87415-16-4

**First Edition :** January, 2018

**Eighth Updated Edition :** January, 2025

**Price :** Rs. 11500/-

US\$ 310

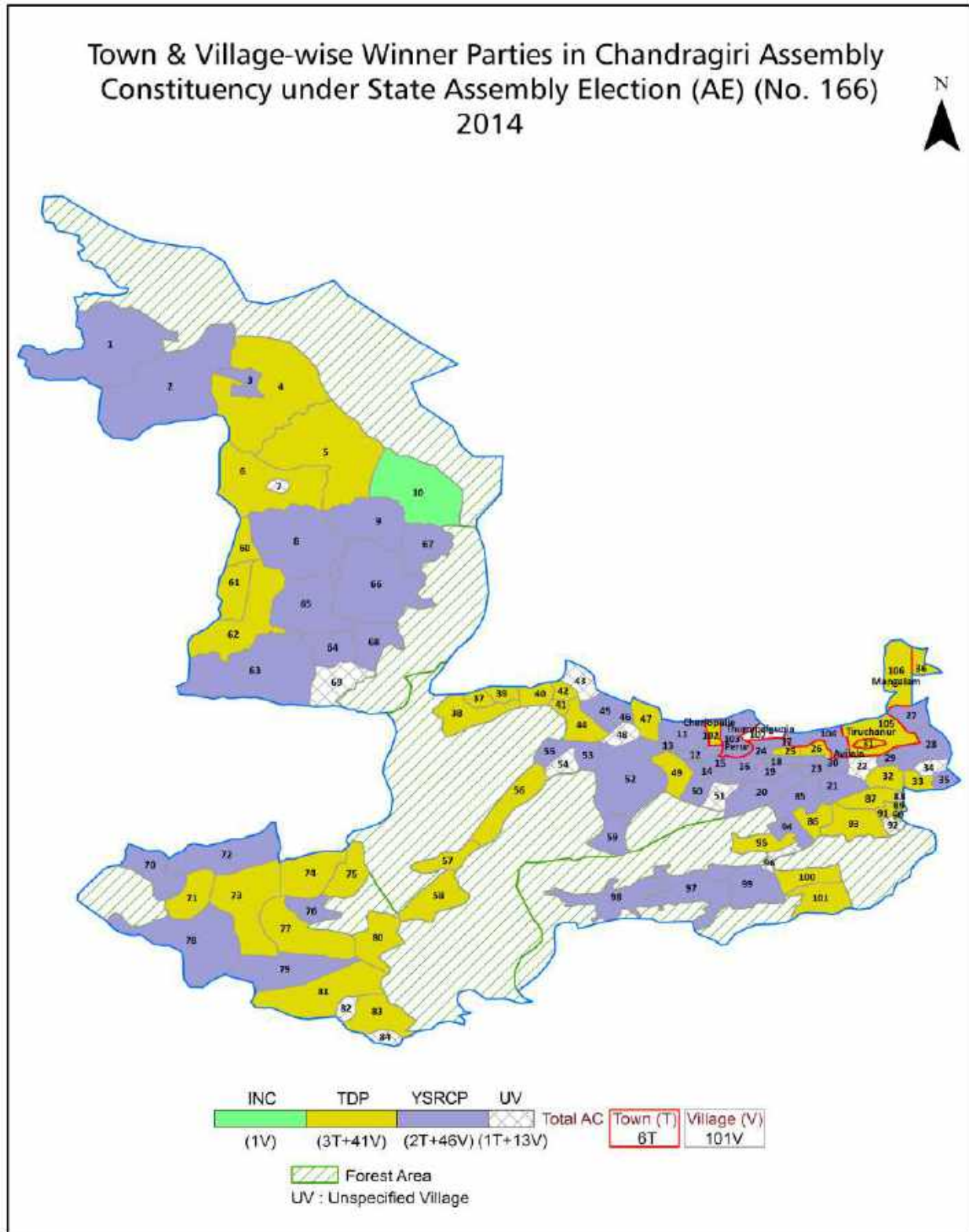
**© Datanet India Pvt. Ltd.**

All rights reserved. No part of this book may be reproduced, stored in a retrieval system or transmitted in any form or by any means, mechanical photocopying, photographing, scanning, recording or otherwise without the prior written permission of the publisher. Please refer to Disclaimer at page no. 245 for the use of this publication.

Printed in India

No.	Particulars	Page No.
	<b>Introduction</b>	
1	Assembly Constituency - (Vidhan Sabha) at a Glance   Features of Assembly as per Delimitation Commission of India (2008)	1-2
	<b>Location and Political Maps</b>	
2	Location Map   Boundaries of Assembly Constituency - (Vidhan Sabha) in District   Boundaries of Assembly Constituency under Parliamentary Constituency - (Lok Sabha)   Town & Village-wise Winner Parties- 2024-PE, 2024-AE, 2019-PE, 2019-AE, 2014-PE, 2014-AE, 2009-PE and 2009-AE	3-11
	<b>Administrative Setup (2011)</b>	
3	District   Sub-district   Towns   Villages   Inhabited Villages   Uninhabited Villages   Village Panchayat   Intermediate Panchayat	12-17
	<b>Demographics (2011)</b>	
4	Population   Households   Rural/Urban Population   Towns and Villages by Population Size   Sex Ratio (Total & 0-6 Years)   Religious Population   Social Population   Literacy Rate	18-19
	<b>Electoral Features</b>	
5	Important Dates of Last Elections Held   Electors by Gender   Service Electors   Voters   Voters Turnout   Polling Stations & Average Number of Electors per Polling Station   Electors by Age Group   Present Elected Representatives	20-25
	<b>Historical Summary Election Results</b>	
6	Vote Share of Major Parties   Winning Margin (Number & Percentage)   Polarity of Parties   Summary Result of Assembly Segment of Parliamentary Elections 2024, 2019, 2014, 2009, 2004 & 1999   Summary Result of Assembly Elections 2024, 2019, 2014, 2009, 2004, 1999, 1994, 1989, 1985, 1983 & 1978	26-44
	<b>Polling Station Level Election Results</b>	
7	Name and Number of Polling Station 2024-PE, 2024-AE, 2019-PE, 2019-AE, 2014-PE, 2014-AE, 2009-PE and 2009-AE   Polling Station-wise Electoral, Voter & Voter Turnout 2024-PE, 2024-AE, 2019-PE, 2019-AE, 2014-PE, 2014-AE, 2009-PE and 2009-AE   Polling Station wise Elections Results 2024-PE, 2024-AE, 2019-PE, 2019-AE, 2014-PE, 2014-AE, 2009-PE and 2009-AE	45-223
	<b>Share of Assembly Constituency</b>	
8	Share of Assembly Constituency - (Vidhan Sabha) in State, District and Parliamentary Constituency - (Lok Sabha)	224
	<b>Socio-Economic Amenities (2011)</b>	
9	Access to Administrative Units   Agricultural, Manufacturing and Industrial Commodities   Demographic Indicators   Education   Health & Manpower   Drinking Water Supply   Sanitation   Entertainment and Recreations Infrastructure   Power   Food Allocation Distribution and Marketing of Agriculture Commodities Infrastructure   Transport and Road Infrastructure   Communication   Banking and Financial Services   Land Use   Irrigation Source	226-240
10	<b>Abbreviation &amp; Sources</b>	242-243
11	<b>Disclaimer</b>	245

Location & Political Map





## Administrative Setup

### List of Village Panchayat & Intermediate Panchayat (Block) Name - 2011

Village Name	Village Panchayat Name	Intermediate Panchayat Name
Achamma Agraharam	Achamma Agraharam	Pakala
Adenapalle	Adenapalle & Chinna Boinapalle	Pakala
Agarala	Agarala	Chandragiri
Anupalle	Anupalle	Ramachandrapuram
Arepalle	Arepalle	Chandragiri
Bhakarapet	Bhakarapet	Chinnagottigallu
Bheemavaram	Bheemavaram, B.Kongaravaripalle & Chinna Rama Puram	Chandragiri
Bodevandlapalle	Bodevandlapalle, Kotakadapalle & Kuraparthivandapalle	Yerravaripalem
Brahmana Pattu	Brahmana Pattu & Pathur	Tirupati (Rural)
Brahmanakalva	Ravillavaripalle	Ramachandrapuram
Chandragiri	Chandragiri, Royalpuram, Reddivaripalle, Thondawada, Dornakambala & Pitchinaidupalle	Chandragiri
Chattevaripalem	Deendarpalle	Chinnagottigallu
Chennayyagunta	Settipalle	Tirupati (Rural)
Chiguruwada North Khandriga	Chiguruwada	Tirupati (Rural)
Chiguruwada South Khandriga	Chiguruwada	Tirupati (Rural)
Chinna Rama Puram	Chinna Rama Puram & B.Kongaravaripalle	Chandragiri
Chinnagotti Gallu	Chinnagotti Gallu	Chinnagottigallu
Chintagunta	Sanambatla	Chandragiri
Chinthakunta	Chinthakunta	Yerravaripalem
Chittathur Kale Palle	N.R.Kamma Palle	Ramachandrapuram
Chittecherla	Chittecherla & Deendarlapalle	Chinnagottigallu
Chuttagunta Ramapuram	Chuttagunta Ramapuram	Ramachandrapuram
Damalcheruvu	Damalcheruvu	Pakala
Damedu	Tiruchanur	Tirupati (Rural)
Devarakonda	Devarakonda	Chinnagottigallu
Diguvuru	Diguvuru	Chinnagottigallu
Dornakambala	Dornakambala & Gagudupalle	Chandragiri
Durga Samudram	Durga Samudram	Tirupati (Rural)
Ellamanda	Ellamanda	Yerravaripalem

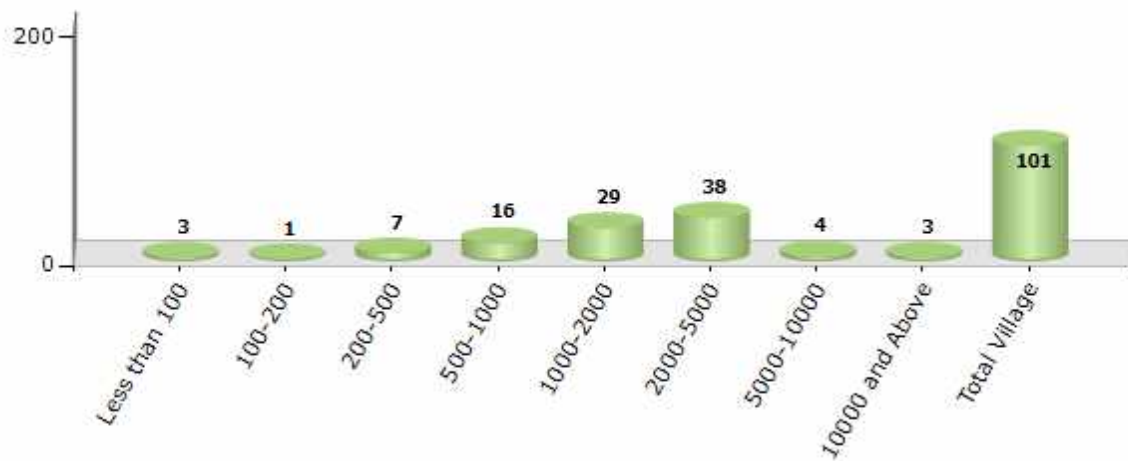
Contd....

Demographics

Number of Villages by Population Size - 2011

Less than 100	100-200	200-500	500-1000	1000-2000	2000-5000	5000-10000	10000 and Above	Total Village
3	1	7	16	29	38	4	3	101

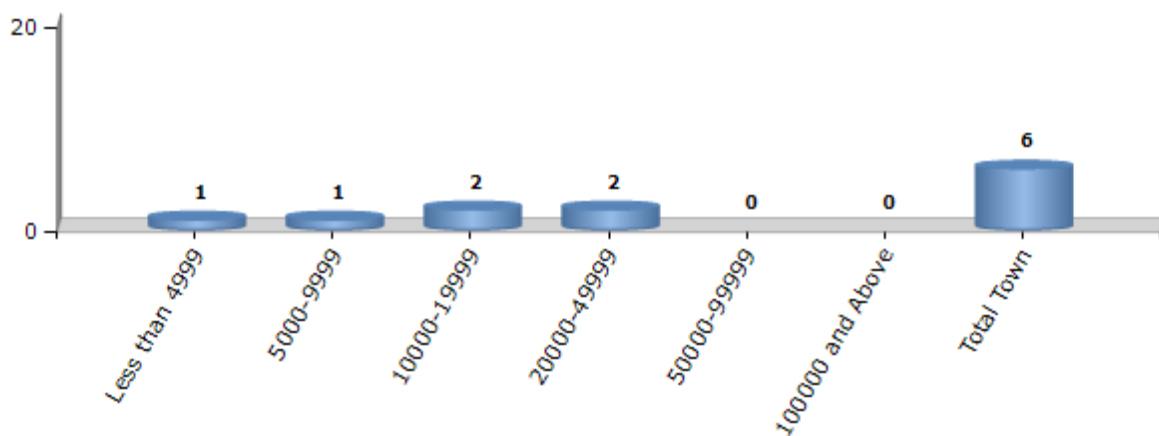
Number of Villages by Population Size - 2011



Number of Towns by Population Size - 2011

Less than 4999	5000-9999	10000-19999	20000-49999	50000-99999	100000 and Above	Total Town
1	1	2	2	0	0	6

Number of Towns by Population Size - 2011

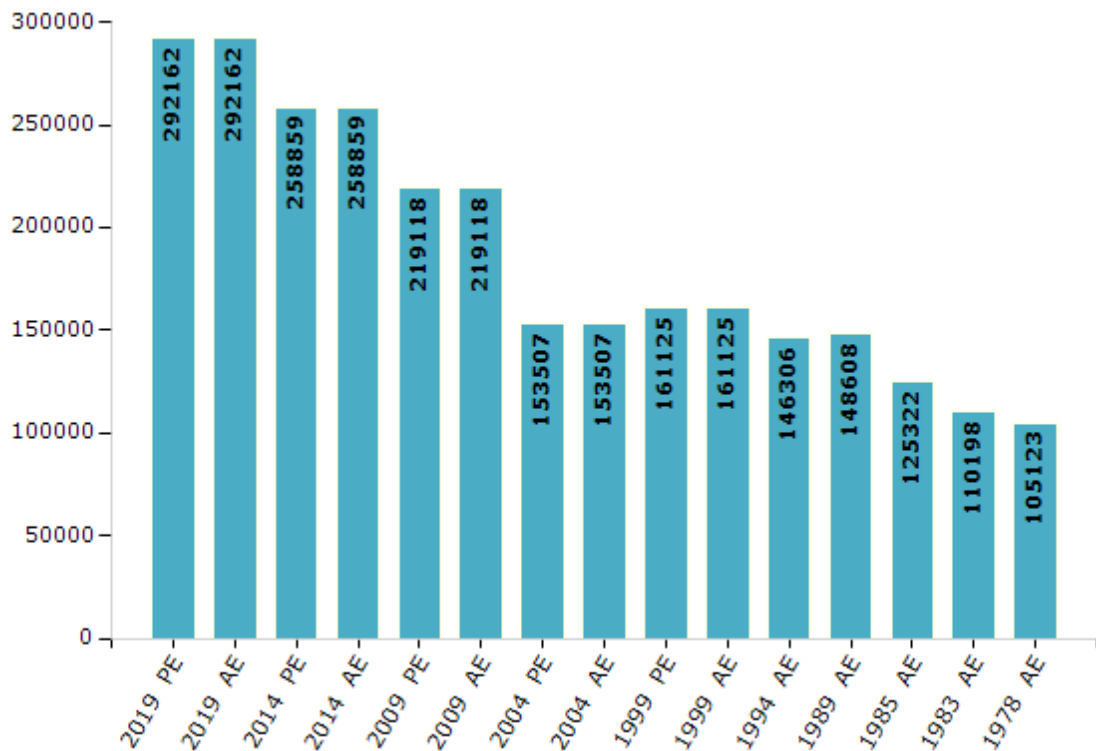


## Electoral Features

### Electors by Male & Female

Year	Male	Female	Others	Total	Year	Male	Female	Others	Total
2019 PE	143744	148371	47	292162	1994 AE	72613	73693	-	146306
2019 AE	143744	148371	47	292162	1989 AE	74656	73952	-	148608
2014 PE	128274	130553	32	258859	1985 AE	63041	62281	-	125322
2014 AE	128274	130553	32	258859	1983 AE	55615	54583	-	110198
2009 PE	107373	111745	-	219118	1978 AE	52829	52294	-	105123
2009 AE	107373	111745	-	219118	1972 AE	-	-	-	-
2004 PE	75545	77962	-	153507	1967 AE	-	-	-	-
2004 AE	75545	77962	-	153507	1962 AE	-	-	-	-
1999 PE	80076	81049	-	161125	1957 AE	-	-	-	-
1999 AE	80076	81049	-	161125	1955 AE	-	-	-	-

Number of Electors



Note : AE : Assembly Election, PE : Assembly Segment of Parliamentary Election



## Historical Summary Election Results

### Summary Result of Assembly Election - 2014

Candidate Name	Party	Votes	Votes %
Chevireddy Bhaskar Reddy	YSRCP	100924	48.88
Arunakumari Galla	TDP	96406	46.7
Kanchana. Venugopal Reddy	INC	4808	2.33
Venkatramaiah Sangeetham	BSP	840	0.41
B. Mamatha	JaSPa	553	0.27
B. Devendra	RKSP	552	0.27
D. Murali Reddy	NCP	373	0.18
Vuppalapati Ravindra Naidu	IND	215	0.1
Pera Giri Babu	IND	210	0.1
Marriboyana. Balaji Kumar Yadav	IND	182	0.09
Jayagar Nabalur	IND	162	0.08
S. Harsha Vardhan	IND	155	0.08
K. Venkata Suresh	JAP	129	0.06
D. Saraswathi	IND	123	0.06
Thammala Madhusudhan Naidu	IND	92	0.04
	NOTA	732	0.35

## Polling Station Level Election Results

### Number and Name of Polling Stations (PS) (2019 AE)

Number of Polling Stations	Name of Polling Stations	Number of Polling Stations	Name of Polling Stations
1	Mpps, (North Room) Ustthikayalapenta Ustthikayalapenta,	22	Z.P. High School, Yerravaripallem Z P High School, Yerravaripallem
2	M.P.P. School (Urdu), Ustthikayalapenta Usithikayalapenta,	23	Z.P. High School, Erravaripalem Yerravaripalem
3	Mpps, (South) Kotakadapalle H/O Bodevandlapalle, Bodevandla Palli Majara, Kotakadapalle,	24	Zphs, Yerravaripallem Yerravaripalem
4	M.P.P. School, (North) Kotakadapalle H/O Bodevandlapalle, Bondevandlapallie,	25	M P Elementray School, Room No 1, Thatimakulapalli Thatimakulapalle
5	M.P.Primary School, O S Gollapalli O.S.Gollapalle,	26	M P Elementray School, Room No 2, Thatimakulapalli M.P Elementary School
6	M.P.P. School, Yellamanda Yellamanda,	27	Z.P. High School, Chintha Gunta
7	Anganwadi Centre New Building, Yellamanda Yellamanda,	28	Z.P. High School, Chintha Gunta Chinthagunta
8	Mpps, Bodevandlapalle Bodevandlapalle,	29	M.P.P School, Kotabylu (Nallaobulavaripalli) Nallaobula Vari Palle
9	M.P.P School Room No 2, Bodevandlapalli	30	Z.P. High School, Rangannagarigadda
10	M.P.Primary School, Edigapalli Edigapalle,	31	Z.P. High School, Rangannagarigadda
11	Z.P. High School, V R Agraharam V.R.Agraharam,	32	M.P.Primary School (West Wing), Vankamaddivaripalli Vankamaddivaripalli Ho Chattevaripalem
12	M.P.Primary School, Kurparthivaripalle Kurparthivari Palle	33	M P Elementray School, East Side, Vankamaddivaripalli M.P Elementary School
13	M P Elementray School, Room No 2, Kurparthivaripalle M.P Elementary School	34	Gram Panchayat Office, Deendharlapahlli Thuvvavandlapalli Ho Chittechera
14	M.P.Primary School, Bandameedha Kammapalle	35	M.P.P.School, (New Buliding), Thettupalli Thuvvavandlapalli Ho Chittechera
15	M.P.P School, Kammapalli Bhavikada Kammapalle	36	M.P.U.P. School, Devarakonda Vangumalluvaripalle, H/O Devarakonda
16	Zilla Parashid High School, Harijanawada Matlivaripalle H.O Udhayamanikyam	37	M.P.Primary School (New Building) Chittechera
17	Z.P. High School, Mativaripalle (North) Matlivaripalle H/O Udhayamanikyam	38	M.P.Primary School (Old Building), Chittechera
18	M.P.Primary School, Nerabaylu	39	Z.P. High School (East Room), Bhakarapet Bhakarapeta
19	M.P.P. School, Nerabylu Nerabaylu	40	Z.P. High School (Last Room), Bhakarapet Bhakarapeta
20	M.P.P School, Nerabaylu	41	M.P.P. S, Bhakarapeta Bakarapeta
21	Z P High School New Building, Erravaripalem Yerravaripallem	42	M.P.Primary School, Nellutla Vari Palli Thippireddygaripalli

Contd....

**Polling Station Level Election Results**

**Polling Station-wise Votes Secured by Overall Top Five Parties in Chandragiri Assembly in Assembly Election (AE) under Chittoor Parliamentary Constituency in Andhra Pradesh (2019)**

Number of Polling Station	Winner - Dr.Chevireddy Bhaskar Reddy (YSRCP)	Runner-up - Pullivarthi Venkata Mani Prasad @Nani (TDP)	3rd - Shitti Surendra (JnP)	4th - K. P. S. Vasu (INC)	5th - Dr. T. Madhu Babu (BJP)	NOTA	Other	Total Votes Secured
36	420	342	13	3	4	9	11	802
37	430	367	8	6	3	8	25	847
38	512	337	3	6	8	6	42	914
39	457	212	28	8	2	8	18	733
40	638	214	25	7	3	25	66	978
41	449	338	18	5	5	10	47	872
42	549	258	13	3	1	8	25	857
43	396	404	5	8	5	6	26	850
44	356	211	15	6	2	9	23	622
45	377	264	3	1	1	8	16	670
46	325	244	1	0	0	2	11	583
47	546	264	3	3	5	9	25	855
48	301	435	73	8	7	3	22	849
49	563	379	11	4	7	12	52	1028
50	550	232	18	4	1	10	25	840
51	396	278	23	4	2	5	24	732
52	506	401	7	3	4	6	18	945
53	704	316	3	7	1	13	43	1087
54	391	217	16	2	3	4	14	647
55	870	145	10	2	0	12	27	1066
56	491	190	3	2	3	1	3	693
57	443	255	2	5	1	11	34	751
58	295	364	7	4	3	2	19	694
59	354	458	47	6	6	10	27	908
60	475	220	5	3	2	13	32	750
61	170	554	2	5	4	1	16	752
62	246	243	2	1	1	4	4	501
63	151	336	3	2	0	4	18	514
64	214	187	2	1	2	2	3	411
65	437	221	22	3	0	9	12	704
66	477	247	13	7	2	6	28	780
67	570	298	14	9	4	8	21	924
68	324	229	47	6	1	4	6	617
69	366	152	62	5	6	2	18	611
70	550	432	48	3	3	8	58	1102

Contd....

Polling Station Level Election Results

Winner, Runner-up and 3rd Party Position & Winning Margin According to Polling Stations in Chandragiri Assembly in Assembly Election (AE) under Chittoor Parliamentary Constituency in Andhra Pradesh (2019)

Polling Station Number	Winner Party	Winner Votes (%)	Runner-up Party	Runner-up Votes (%)	Winning Margin Votes (%)	Third Party	Third Party Votes (%)	Other Votes (%)
75	TDP	157 (52.51)	YSRCP	136 (45.48)	21 (7.03)	JnP	4 (1.34)	2 (0.67)
76	YSRCP	265 (68.83)	TDP	104 (27.01)	161 (41.82)	JnP	5 (1.3)	11 (2.86)
77	YSRCP	463 (83.88)	TDP	64 (11.59)	399 (72.29)	JnP	6 (1.09)	19 (3.44)
78	YSRCP	509 (70.3)	TDP	186 (25.69)	323 (44.61)	IND (DPSK)	6 (0.83)	23 (3.18)
79	YSRCP	630 (62.07)	TDP	281 (27.68)	349 (34.39)	JnP	46 (4.53)	58 (5.71)
80	YSRCP	579 (53.56)	TDP	309 (28.58)	270 (24.98)	JnP	147 (13.6)	46 (4.26)
81	YSRCP	275 (65.01)	TDP	127 (30.02)	148 (34.99)	IND (DPSK)	4 (0.95)	17 (4.02)
82	TDP	331 (50.38)	YSRCP	304 (46.27)	27 (4.11)	BJP	4 (0.61)	18 (2.74)
83	YSRCP	370 (44.85)	TDP	343 (41.58)	27 (3.27)	JnP	53 (6.42)	59 (7.15)
84	YSRCP	391 (45.57)	TDP	372 (43.36)	19 (2.21)	JnP	64 (7.46)	31 (3.61)
85	TDP	451 (74.55)	YSRCP	139 (22.98)	312 (51.57)	JnP	4 (0.66)	11 (1.82)
86	YSRCP	304 (57.79)	TDP	189 (35.93)	115 (21.86)	JnP	15 (2.85)	18 (3.42)
87	YSRCP	240 (61.07)	TDP	129 (32.82)	111 (28.25)	JnP	9 (2.29)	15 (3.82)
88	YSRCP	209 (59.38)	TDP	121 (34.38)	88 (25)	JnP	7 (1.99)	15 (4.26)
89	YSRCP	348 (57.9)	TDP	229 (38.1)	119 (19.8)	JnP	6 (1)	18 (3)
90	YSRCP	95 (54.6)	TDP	68 (39.08)	27 (15.52)	INC	5 (2.87)	6 (3.45)
91	TDP	288 (46.45)	YSRCP	275 (44.35)	13 (2.1)	JnP	15 (2.42)	42 (6.77)
92	TDP	313 (53.69)	YSRCP	234 (40.14)	79 (13.55)	JnP	10 (1.72)	26 (4.46)
93	TDP	314 (52.33)	YSRCP	254 (42.33)	60 (10)	JnP	14 (2.33)	18 (3)
94	YSRCP	144 (48.65)	TDP	139 (46.96)	5 (1.69)	JnP	6 (2.03)	7 (2.36)
95	TDP	310 (46.97)	YSRCP	308 (46.67)	2 (0.3)	JnP	16 (2.42)	26 (3.94)
96	YSRCP	440 (53.4)	TDP	341 (41.38)	99 (12.02)	JnP	15 (1.82)	28 (3.4)
97	YSRCP	359 (56.09)	TDP	243 (37.97)	116 (18.12)	INC	18 (2.81)	20 (3.13)
98	YSRCP	412 (58.11)	TDP	257 (36.25)	155 (21.86)	JnP	9 (1.27)	31 (4.37)
99	YSRCP	383 (69.89)	TDP	154 (28.1)	229 (41.79)	JnP	2 (0.36)	9 (1.64)
100	YSRCP	665 (77.69)	TDP	161 (18.81)	504 (58.88)	DABAP	9 (1.05)	21 (2.45)
101	YSRCP	276 (56.56)	TDP	184 (37.7)	92 (18.86)	JnP	7 (1.43)	21 (4.3)
102	TDP	346 (59.55)	YSRCP	207 (35.63)	139 (23.92)	JnP	7 (1.2)	21 (3.61)
103	TDP	276 (54.44)	YSRCP	212 (41.81)	64 (12.63)	JnP	12 (2.37)	7 (1.38)
104	TDP	612 (80)	YSRCP	129 (16.86)	483 (63.14)	IND (GNB)	3 (0.39)	21 (2.75)
105	YSRCP	513 (52.03)	TDP	415 (42.09)	98 (9.94)	JnP	28 (2.84)	30 (3.04)
106	TDP	340 (72.81)	YSRCP	99 (21.2)	241 (51.61)	JnP	5 (1.07)	23 (4.93)
107	YSRCP	486 (72.86)	TDP	138 (20.69)	348 (52.17)	JnP	20 (3)	23 (3.45)
108	YSRCP	338 (59.3)	TDP	207 (36.32)	131 (22.98)	IND (DPSK)	6 (1.05)	19 (3.33)
109	TDP	316 (61.12)	YSRCP	186 (35.98)	130 (25.14)	JnP	5 (0.97)	10 (1.93)
110	TDP	371 (61.63)	YSRCP	211 (35.05)	160 (26.58)	IND (DPSK)	4 (0.66)	16 (2.66)
111	YSRCP	378 (52.28)	TDP	295 (40.8)	83 (11.48)	JnP	11 (1.52)	39 (5.39)

Contd....

## Socio-Economic Amenities - Rural

### Access to Education Facilities

Particulars	Number of Villages (% of Population)				
	Available	Not Available	If Not Available (Distance of Nearest Facility)		
			A	B	C
Govt. Primary School	97 (100)	4 (0)	2 (0)	1 (0)	0 (0)
Private Primary School	21 (42)	80 (58)	1 (0)	0 (0)	0 (0)
Govt. Middle School	56 (78)	45 (22)	21 (8)	12 (6)	2 (1)
Private Middle School	23 (39)	78 (61)	0 (0)	0 (0)	0 (0)
Govt. Secondary School	41 (65)	60 (35)	36 (21)	17 (10)	1 (1)
Private Secondary School	14 (29)	87 (71)	1 (0)	0 (0)	0 (0)
Govt. Senior Secondary School	4 (20)	97 (80)	12 (9)	44 (34)	38 (32)
Private Senior Secondary School	3 (18)	98 (82)	3 (4)	0 (0)	0 (0)
Govt. Arts and Science Degree College	2 (16)	99 (84)	4 (4)	31 (26)	37 (33)
Private Arts and Science Degree College	3 (11)	98 (89)	4 (2)	10 (6)	11 (10)
Govt. Engineering College	1 (0)	100 (100)	4 (4)	14 (13)	22 (27)
Private Engineering College	4 (4)	97 (96)	12 (7)	20 (19)	24 (25)
Govt. Medicine College	0 (0)	101 (100)	4 (4)	26 (20)	71 (76)
Private Medicine College	0 (0)	101 (100)	0 (0)	0 (0)	0 (0)
Govt. Management Institute	1 (0)	100 (100)	6 (5)	14 (12)	24 (23)
Private Management Institute	8 (9)	93 (91)	14 (15)	15 (9)	19 (27)
Govt. Polytechnic	1 (8)	100 (92)	9 (8)	30 (22)	61 (62)
Private Polytechnic	0 (0)	101 (100)	0 (0)	0 (0)	0 (0)
Govt. Vocational Training School/ITI	3 (17)	98 (83)	11 (13)	36 (25)	51 (45)
Private Vocational Training School/ITI	0 (0)	101 (100)	0 (0)	0 (0)	0 (0)
Govt. Non Formal Training Centre	5 (21)	96 (79)	20 (16)	50 (41)	26 (22)
Private Non Formal Training Centre	0 (0)	101 (100)	0 (0)	0 (0)	0 (0)
Govt. School For Disabled	0 (0)	101 (100)	2 (2)	28 (21)	71 (77)
Private School For Disabled	0 (0)	101 (100)	0 (0)	0 (0)	0 (0)
Government Others	0 (0)	101 (100)	0 (0)	0 (0)	0 (0)
Private Others	0 (0)	101 (100)	0 (0)	0 (0)	0 (0)

Note : Distance A : Less than 5 km; B : Between 5-10 km; C : 10+ km.; Source : Data Analysis is based on 2011 Census.

## DISCLAIMER

The Terms of Use and Disclaimer of Datanet India Private Limited (hereinafter referred to as "Datanet") for use of this analysis report of **Chandragiri Assembly Constituency (Chandragiri Vidhan Sabha)** :-

1. **Assembly Factbook™** is a Registered Trade Mark owned by Datanet.
2. All the maps are sketched and graphical representation only and have not been drawn to the scale and also not to represent the actual geographical area or boundary of the unit.
3. The data for the aforesaid analysis is based on authentic sources and has been culled from the various publications of Census, CSO and NSSO for district and block level data, various central and state government departments, Central & State Elections Commissions and the concerned Returning Officers' releases, Electoral Rolls, Election results and allied publications, internal assessment, surveys, estimates and analysis. Therefore, certain adjustment of data at micro level may have been done to arrive closer to the macro data.
4. Data have been provided on an "As Is" and "As AVAILABLE" basis
5. The colours shown in the maps or diagram and charts of a particular party, alliance or AC are indicative and do not represent them.
6. This publication which includes maps, sheets, graphs and data would be the property under copyright of Datanet only. The user may use these for its internal study, analysis and research purposes. It's public display, re-selling or any commercial uses by the user are not allowed.
7. Datanet has taken due care and caution in compilation and processing of data and allied information, but does not guarantee the accuracy, adequacy or completeness of any information/analysis and will be not responsible for any errors or omissions or for the results obtained from the use of such information/analysis.
8. All the contents for the publication have been culled from various authentic sources and Datanet reasonably believes such sources to be reliable, but does not make any representations, express or implied as to the accuracy or fitness of use of such information. The information or contents of the information/analysis do not constitute advice and should not be relied upon in making (or refraining from making) any decision. Any reliance placed upon the information provided by Datanet is the sole responsibility and strictly at the user's risk.
9. In no event will Datanet be liable for any damages (including, without limitation, damages for loss of business projects, or loss of profits) arising in contract, tort or otherwise from the use of or inability to use any of its contents, or from any action taken (or refrained from being taken) as a result of using the analysis or any of its contents. Datanet its directors, owners, editors, officials, employees, distributor and agents or any associate will not be liable for any errors in the information contained or any consequences arising from the use of the contents of the provided information/analysis.
10. If any provision of these terms and conditions is held invalid or illegal or unenforceable for any reason by any court of competent jurisdiction, such provision shall be severed and the remainder of provisions of the terms and conditions shall continue in full force and effect as if the Term of Use had been executed with the invalid, illegal or unenforceable provision eliminated.
11. If there are any discrepancies in the information provided, please bring it to attention of Datanet for suitable rectification measures.



**Buy Online This Complete Book At**  
**Datanet India eBooks Store**

[www.indiastatpublications.com](http://www.indiastatpublications.com)

or go directly at

[http://www.indiastatpublications.com/  
Assembly\\_factbook/Andhra\\_Pradesh/Chittoor/ Chandragiri](http://www.indiastatpublications.com/Assembly_factbook/Andhra_Pradesh/Chittoor/Chandragiri)

 **india**stat**elections**

