



Andhra Pradesh

Assembly Factbook™

Kadiri Assembly Constituency



Key Electoral Data of Kadiri
Assembly Constituency (Vidhan Sabha)

Andhra Pradesh
Assembly FactbookTM
Kadiri Assembly Constituency



Kadiri Vidhan Sabha

Editor & Director

Dr. R.K. Thukral

Research Editor

Dr. Shafeeq Rahman

Compiled, Researched and Published by Datanet India Pvt. Ltd.

D-100, 1st Floor,

Okhla Industrial Area, Phase-I,
New Delhi- 110020.

Ph.: 91-11- 43580781-84

Email : support@indiastatpublications.com

Website : www.indiastatelections.com

Online Book Store :

www.indiastatpublications.com

Report No. : AFB/AP-161-0125

ISBN : 978-93-87415-42-3

First Edition : January, 2018

Eighth Updated Edition : January, 2025

Price : Rs. 11500/-

US\$ 310

© Datanet India Pvt. Ltd.

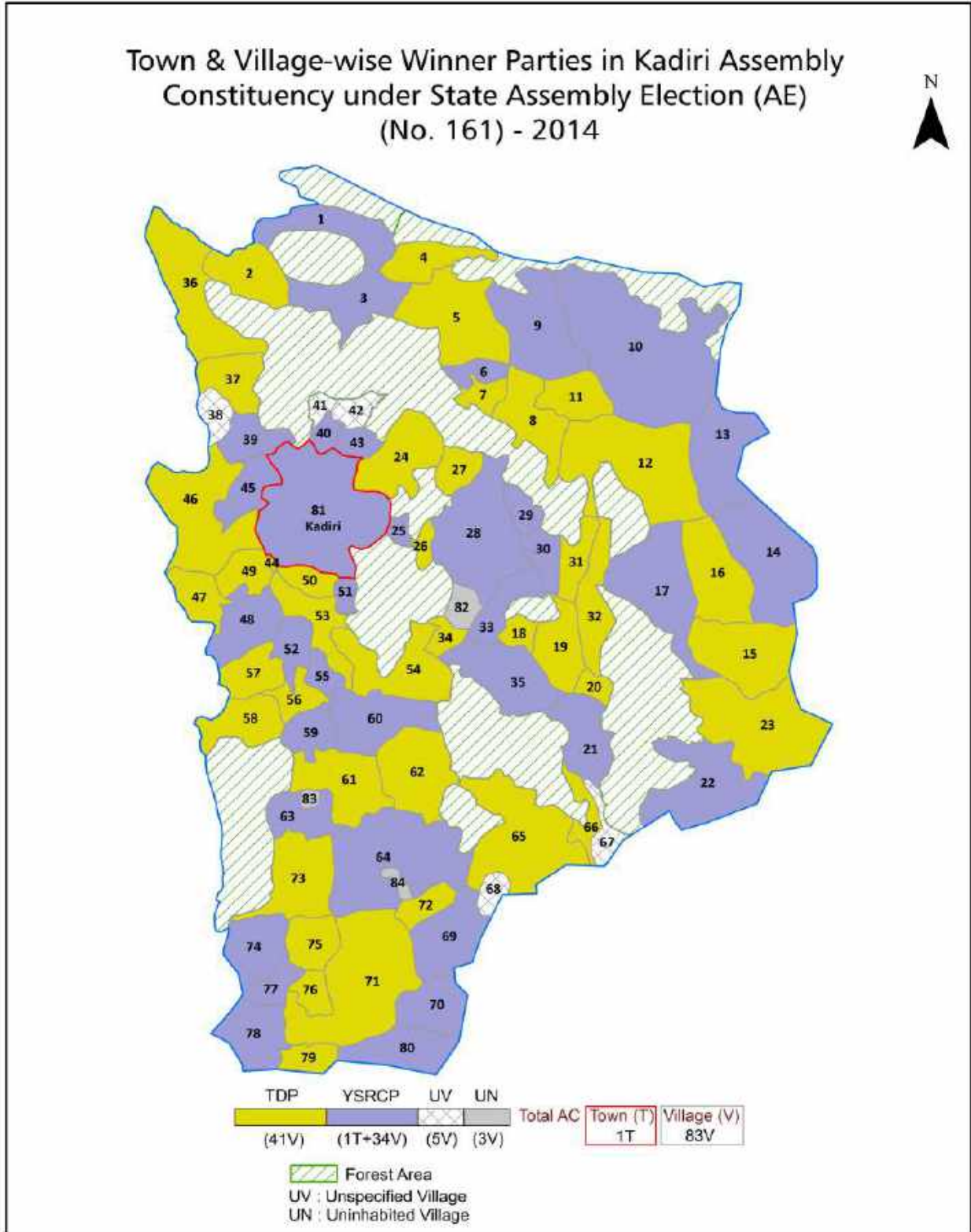
All rights reserved. No part of this book may be reproduced, stored in a retrieval system or transmitted in any form or by any means, mechanical photocopying, photographing, scanning, recording or otherwise without the prior written permission of the publisher. Please refer to Disclaimer at page no. 237 for the use of this publication.

Printed in India

Contents

No.	Particulars	Page No.
	Introduction	
1	Assembly Constituency - (Vidhan Sabha) at a Glance Features of Assembly as per Delimitation Commission of India (2008)	1-2
	Location and Political Maps	
2	Location Map Boundaries of Assembly Constituency - (Vidhan Sabha) in District Boundaries of Assembly Constituency under Parliamentary Constituency - (Lok Sabha) Town & Village-wise Winner Parties- 2024-PE, 2024-AE, 2019-PE, 2019-AE, 2014-PE, 2014-AE, 2009-PE and 2009-AE	3-11
	Administrative Setup (2011)	
3	District Sub-district Towns Villages Inhabited Villages Uninhabited Villages Village Panchayat Intermediate Panchayat	12-16
	Demographics (2011)	
4	Population Households Rural/Urban Population Towns and Villages by Population Size Sex Ratio (Total & 0-6 Years) Religious Population Social Population Literacy Rate	17-18
	Electoral Features	
5	Important Dates of Last Elections Held Electors by Gender Service Electors Voters Voters Turnout Polling Stations & Average Number of Electors per Polling Station Electors by Age Group Present Elected Representatives	19-24
	Historical Summary Election Results	
6	Vote Share of Major Parties Winning Margin (Number & Percentage Polarity of Parties Summary Result of Assembly Segment of Parliamentary Elections 2024, 2019, 2014, 2009, 2004 and 1999 Summary Result of Assembly Elections 2024, 2019, 2014, 2009, 2004, 1999, 1994, 1989, 1985, 1983, 1978, 1972, 1967, 1962 and 1955	25-47
	Polling Station Level Election Results	
7	Name and Number of Polling Station 2024-PE, 2024-AE, 2019-PE, 2019-AE, 2014-PE, 2014-AE, 2009-PE and 2009-AE Polling Station-wise Electoral, Voter & Voter Turnout 2024-PE, 2024-AE, 2019-PE, 2019-AE, 2014-PE, 2014-AE, 2009-PE and 2009-AE Polling Station wise Elections Results 2024-PE, 2024-AE, 2019-PE, 2019-AE, 2014-PE, 2014-AE, 2009-PE and 2009-AE	48-215
	Share of Assembly Constituency	
8	Share of Assembly Constituency - (Vidhan Sabha) in State, District and Parliamentary Constituency - (Lok Sabha)	216
	Socio-Economic Amenities (2011)	
9	Access to Administrative Units Agricultural, Manufacturing and Industrial Commodities Demographic Indicators Education Health & Manpower Drinking Water Supply Sanitation Entertainment and Recreations Infrastructure Power Food Allocation Distribution and Marketing of Agriculture Commodities Infrastructure Transport and Road Infrastructure Communication Banking and Financial Services Land Use Irrigation Source	218-232
10	Abbreviation & Sources	234-235
11	Disclaimer	237

Location & Political Map



Administrative Setup

List of Village Panchayat & Intermediate Panchayat (Block) Name - 2011

Village Name	Village Panchayat Name	Intermediate Panchayat Name
Agrahampalle	T.Sadum	Tanakal
Alampur	Kadiri Kuntlapalle	Kadiri
Allugundu	Allugundu	Nallacheruvu
Balagamudram	Balagamudram	Tanakal
Bandlapalle	Bandlapalle	Talupula
Bathalapalle	Yeguvapalle	Kadiri
Bonthalapalle	Bonthalapalle	Tanakal
Chalamakuntapalle	Chalamakuntapalle	Kadiri
Chamachenubylu	Mallameedapalli	Gandlapenta
Chamalagondi	Chamalagondi	Gandlapenta
Cheekatimanipalle	Cheekatimanipalle	Tanakal
Chinnaramannagaripalle	Chinnaramannagaripalle	Tanakal
Chippalamadugu	Kalagamudram	Kadiri
Danduvaripalle	Mundlavariipalli	Tanakal
Dhaniyanicheruvu	Dhaniyanicheruvu	Nambulipulikunta
Edurudona	Edurudona	Nambulipulikunta
Ethodu	Ethodu	Tanakal
Gandlapenta	Gandlapenta	Gandlapenta
Godduvelagala	Godduvelagala	Gandlapenta
Gootibylu	Edurudona	Nambulipulikunta
Gowkanapalle	Gowkanapalle & East Nadimpalle	Nambulipulikunta
Gurrabailu	Malreddipalle	Tanakal
Jeenulakunta	Jeenulakunta	Gandlapenta
Jogannapeta	Jogannapeta & P.Kothapalle	Nallacheruvu
Kadiri (R)	Kummaravandlapalle & Burugapalle	Kadiri
Kadiri Brahmanapalle	Kadiri Brahmanapalle	Kadiri
Kadirikuntlapalle	Kadirikuntlapalle	Kadiri
Kadiripulakunta	Kadiripulakunta	Nallacheruvu
Kalagamudram	Kalagamudram	Kadiri

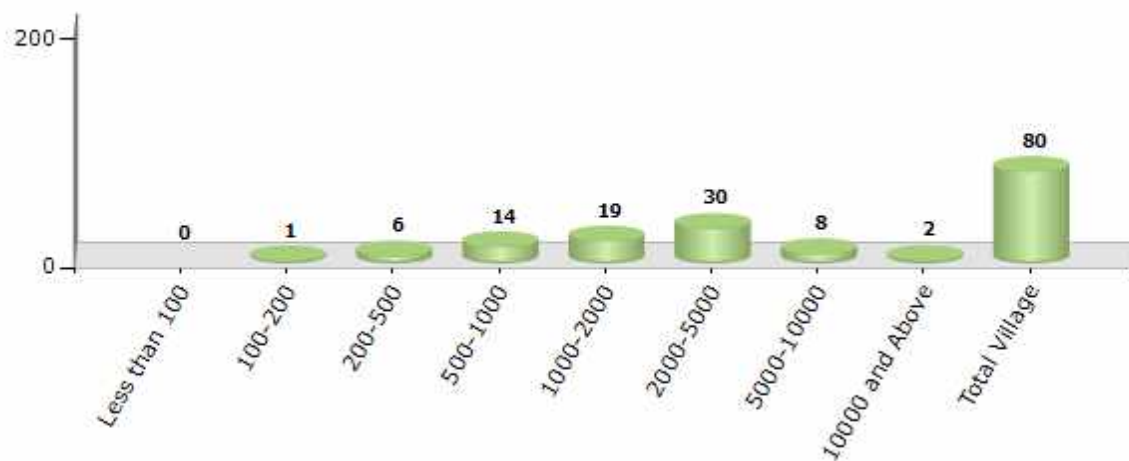
Contd....

Demographics

Number of Villages by Population Size - 2011

Less than 100	100-200	200-500	500-1000	1000-2000	2000-5000	5000-10000	10000 and Above	Total Village
0	1	6	14	19	30	8	2	80

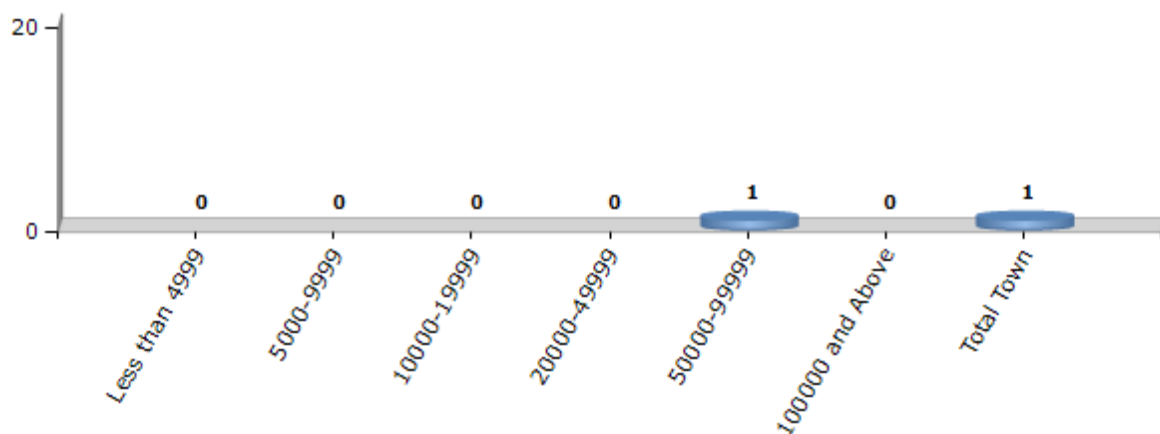
Number of Villages by Population Size - 2011



Number of Towns by Population Size - 2011

Less than 4999	5000-9999	10000-19999	20000-49999	50000-99999	100000 and Above	Total Town
0	0	0	0	1	0	1

Number of Towns by Population Size - 2011

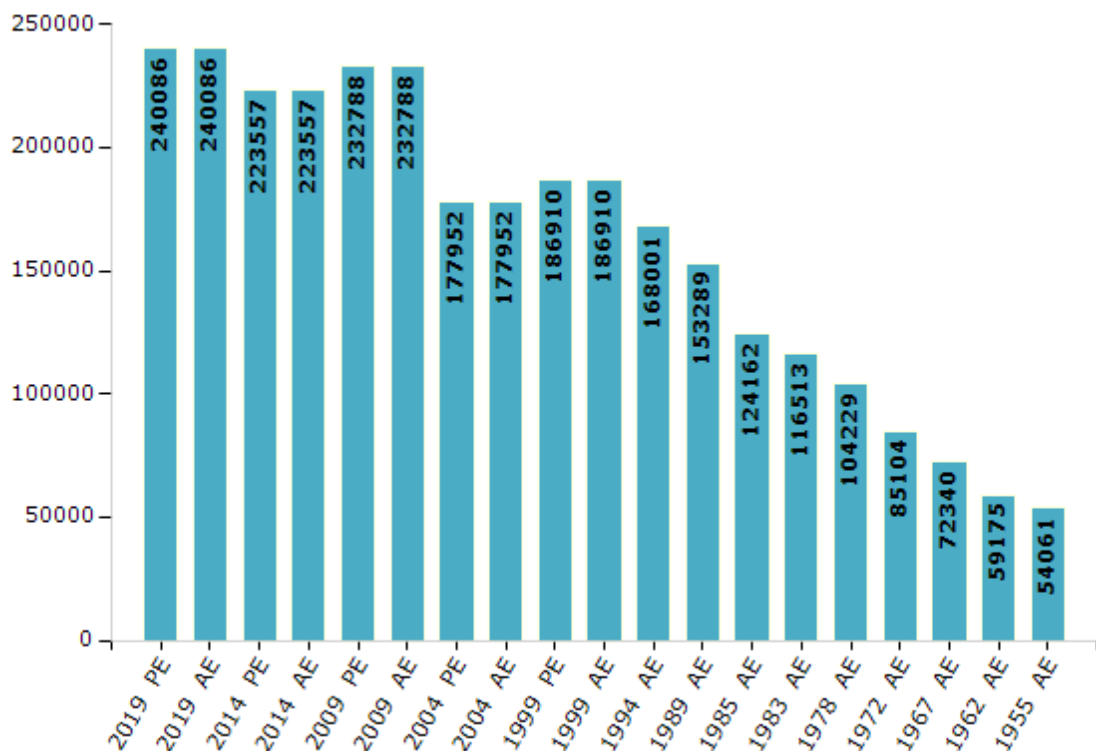


Electoral Features

Electors by Male & Female

Year	Male	Female	Others	Total	Year	Male	Female	Others	Total
2019 PE	119831	120246	9	240086	1994 AE	85043	82958	-	168001
2019 AE	119831	120246	9	240086	1989 AE	77307	75982	-	153289
2014 PE	112075	111471	11	223557	1985 AE	62596	61566	-	124162
2014 AE	112075	111471	11	223557	1983 AE	58506	58007	-	116513
2009 PE	115565	117223	-	232788	1978 AE	52390	51839	-	104229
2009 AE	115565	117223	-	232788	1972 AE	42674	42430	-	85104
2004 PE	89205	88747	-	177952	1967 AE	-	-	-	72340
2004 AE	89205	88747	-	177952	1962 AE	-	-	-	59175
1999 PE	94224	92686	-	186910	1957 AE	-	-	-	-
1999 AE	94224	92686	-	186910	1955 AE	-	-	-	54061

Number of Electors



Note : AE : Assembly Election, PE : Assembly Segment of Parliamentary Election

Historical Summary Election Results

Summary Result of Assembly Election - 2014

Candidate Name	Party	Votes	Votes %
Attar. Chand Basha	YSRCP	81639	48.29
Kandikunta Venkata Prasad	TDP	80671	47.72
V.Sriramulu Naik	INC	1269	0.75
M.Vemaiah Yadav	CPI	1170	0.69
Avula Ram Prasad Reddy	JaSPa	776	0.46
A.Hanumanthu	BSP	622	0.37
M.Rajasekhar Achari	IND	381	0.23
M.N.Shamiulla Khan	IND	337	0.2
C.M.Iliyaz	AIMIM	320	0.19
Vaditye Ramu Naik	IND	283	0.17
Rottala Mustaq	IND	213	0.13
Munagalavaripalli Ramanjaneyulu	IND	195	0.12
Dadem Rajasekhar Reddy	IND	187	0.11
Bukke Meenakshi	AAP	141	0.08
M.N.Javeed Khan	IND	109	0.06
	NOTA	733	0.43

Polling Station Level Election Results

Number and Name of Polling Stations (PS) (2019 AE)

Number of Polling Stations	Name of Polling Stations	Number of Polling Stations	Name of Polling Stations
1	M.P.P. School Sabbanaguntha Palli	22	Govt. Junior College, Talupula Yerravaripallem
2	M.P.P. School Odula Palli	23	M.P.U.P. School, Vepamanipeta Vepamaanipeta
3	M.P.P. School Odulapalli	24	M.P.U.P. School, Vepamanipeta Vepamaanipeta
4	M.P.U.P. School Udumulakurthi	25	M.P.P. School, Gunduvaripalli Gunduvari Palli
5	M.P.P. School Samalavandlapalli	26	M.P.U.P. School, Peddannavaripalli Thatimakulapalle
6	M.P.P. School Bandameeda Kothapalli	27	M.P.U.P. School, Peddannavaripalli Peddannavari Palli
7	M.P.U.P. School Lakka Samudram	28	M.P.P. School Sangativari Palli
8	M.P.U.P. School Lakka Samudram	29	Graam Panchyath Office Eedulakuntla Pallii
9	M.P.U.P. School Usthikayalapenta	30	Anganwadi Centre, Edulakuntla Palli Eedulakuntla Palli
10	Z.P. Madyamika School, Rmsa, Kurli	31	M.P.P. School, Pulavandla Palli
11	M.P.P. School, Sidduguripalli Sidduguuri Palli	32	M.P.U.P. School Ganjivari Palli
12	M.P.U.P. School, Batrepalli	33	M.P.U.P. School Vankamaddivaripalli Ho Chattevaripalem
13	M.P.P. School, Yerrasanivaripalli Kurparthivandlapalle	34	Z.P.H. School Ubbaravandla Palli
14	M.P.P. School, Kummarapeta	35	Z.P.H. School Ubbara Vaandla Palli
15	Anganwadi Centre, Madikavandlapalli Madika Vaanadla Palli	36	Mandal Parishad Primary School, Bandlapalli Pallavandla Palli
16	Z.P.H. School, Talupula	37	Mandal Parishad Primary School, Bandlapalli Pallavandla Palli
17	Z.P.H. School, Talupula	38	M.P.P. School Nutanakaluva
18	Govt. Junior College, Talupula	39	M.P.P. School Nutanakaluva
19	Govt. Junior College, Talupula	40	M.P.U.P. School Ponthalavandla Palli
20	Govt. Junior College, Talupula	41	Z.P.H. School Obulareddy Palli
21	Govt. Junior College, Talupula	42	Z.P.H. School Obulareddy Palli

Contd....

Polling Station Level Election Results

Polling Station-wise Votes Secured by Overall Top Five Parties in Kadiri Assembly in Assembly Election (AE) under Hindupur Parliamentary Constituency in Andhra Pradesh (2019)

Number of Polling Station	Winner - P.V. Sidda Reddy (YSRCP)	Runner-up - Kandikunta Venkata Prasad (TDP)	3rd - K. Vajra Bhaskarareddy (AIFB)	4th - Bhyrava Prasad Perugu Chinna (JnP)	5th - Pathan Khaseem Khan (INC)	NOTA	Other	Total Votes Secured
36	360	146	1	3	2	4	5	521
37	278	198	10	4	6	5	15	516
38	369	184	9	4	13	5	7	591
39	144	215	8	3	6	2	3	381
40	258	399	6	3	12	6	16	700
41	456	452	6	3	13	9	6	945
42	353	244	4	5	8	2	3	619
43	361	311	2	7	8	3	4	696
44	291	115	3	5	2	7	9	432
45	471	236	5	7	12	3	21	755
46	261	174	4	2	2	11	6	460
47	522	191	11	2	7	7	9	749
48	432	263	26	14	18	10	13	776
49	267	204	24	9	13	5	4	526
50	322	386	34	15	13	6	10	786
51	450	315	7	16	7	5	11	811
52	551	287	17	12	16	5	18	906
53	320	153	15	9	9	14	34	554
54	359	315	20	14	12	7	9	736
55	475	141	5	3	8	12	9	653
56	219	97	1	1	2	1	7	328
57	524	249	6	4	4	9	8	804
58	585	228	5	8	13	4	7	850
59	628	448	17	16	16	10	21	1156
60	619	428	16	10	15	7	15	1110
61	332	222	10	3	4	4	13	588
62	330	214	9	6	8	1	7	575
63	629	475	17	7	6	3	13	1150
64	381	545	15	16	16	12	23	1008
65	361	460	4	8	4	2	0	839
66	307	247	18	11	8	4	4	599
67	259	217	11	11	1	1	4	504
68	404	258	13	15	3	3	7	703
69	494	296	31	28	8	6	14	877
70	303	161	22	12	8	6	2	514

Contd....

Polling Station Level Election Results

Winner, Runner-up and 3rd Party Position & Winning Margin According to Polling Stations in Kadiri Assembly in Assembly Election (AE) under Hindupur Parliamentary Constituency in Andhra Pradesh (2019)

Polling Station Number	Winner Party	Winner Votes (%)	Runner-up Party	Runner-up Votes (%)	Winning Margin Votes (%)	Third Party	Third Party Votes (%)	Other Votes (%)
75	YSRCP	348 (59.59)	TDP	187 (32.02)	161 (27.57)	AIFB	26 (4.45)	23 (3.94)
76	YSRCP	329 (54.47)	TDP	240 (39.74)	89 (14.73)	AIFB	17 (2.81)	18 (2.98)
77	YSRCP	305 (66.16)	TDP	109 (23.64)	196 (42.52)	AIFB	20 (4.34)	27 (5.86)
78	YSRCP	545 (58.04)	TDP	301 (32.06)	244 (25.98)	AIFB	53 (5.64)	40 (4.26)
79	YSRCP	386 (55.86)	TDP	251 (36.32)	135 (19.54)	AIFB	22 (3.18)	32 (4.63)
80	YSRCP	664 (64.47)	TDP	307 (29.81)	357 (34.66)	AIFB	20 (1.94)	39 (3.79)
81	YSRCP	463 (52.38)	TDP	344 (38.91)	119 (13.47)	AIFB	34 (3.85)	43 (4.86)
82	YSRCP	206 (51.5)	TDP	171 (42.75)	35 (8.75)	JnP	8 (2)	15 (3.75)
83	YSRCP	264 (51.87)	TDP	212 (41.65)	52 (10.22)	JnP	17 (3.34)	16 (3.14)
84	YSRCP	243 (56.38)	TDP	149 (34.57)	94 (21.81)	JnP	14 (3.25)	25 (5.8)
85	YSRCP	282 (58.63)	TDP	170 (35.34)	112 (23.29)	AIFB	10 (2.08)	19 (3.95)
86	YSRCP	253 (58.29)	TDP	144 (33.18)	109 (25.11)	JnP	13 (3)	24 (5.53)
87	YSRCP	209 (48.6)	TDP	181 (42.09)	28 (6.51)	AIFB	11 (2.56)	29 (6.74)
88	TDP	421 (46.31)	YSRCP	354 (38.94)	67 (7.37)	JnP	66 (7.26)	68 (7.48)
89	TDP	598 (65.5)	YSRCP	231 (25.3)	367 (40.2)	JnP	36 (3.94)	48 (5.26)
90	TDP	261 (48.15)	YSRCP	241 (44.46)	20 (3.69)	JnP	10 (1.85)	30 (5.54)
91	YSRCP	452 (45.15)	TDP	447 (44.66)	5 (0.49)	JnP	39 (3.9)	63 (6.29)
92	YSRCP	232 (45.14)	TDP	231 (44.94)	1 (0.2)	AIFB	20 (3.89)	31 (6.03)
93	YSRCP	244 (48.22)	TDP	220 (43.48)	24 (4.74)	AIFB	18 (3.56)	24 (4.74)
94	TDP	636 (62.17)	YSRCP	301 (29.42)	335 (32.75)	JnP	33 (3.23)	53 (5.18)
95	TDP	366 (55.29)	YSRCP	260 (39.27)	106 (16.02)	JnP	12 (1.81)	24 (3.63)
95A	YSRCP	290 (48.41)	TDP	273 (45.58)	17 (2.83)	AIFB	12 (2)	24 (4.01)
96	YSRCP	534 (56.09)	TDP	349 (36.66)	185 (19.43)	AIFB	29 (3.05)	40 (4.2)
97	YSRCP	486 (54.42)	TDP	343 (38.41)	143 (16.01)	INC	30 (3.36)	34 (3.81)
98	YSRCP	630 (60.46)	TDP	353 (33.88)	277 (26.58)	AIFB	28 (2.69)	31 (2.98)
99	YSRCP	557 (62.17)	TDP	293 (32.7)	264 (29.47)	AIFB	27 (3.01)	19 (2.12)
100	YSRCP	791 (71.2)	TDP	236 (21.24)	555 (49.96)	AIFB	53 (4.77)	31 (2.79)
101	YSRCP	257 (73.22)	TDP	75 (21.37)	182 (51.85)	AIFB	12 (3.42)	7 (1.99)
102	YSRCP	531 (71.18)	TDP	187 (25.07)	344 (46.11)	AIFB	11 (1.47)	17 (2.28)
103	YSRCP	578 (66.74)	TDP	212 (24.48)	366 (42.26)	AIFB	37 (4.27)	39 (4.5)
104	NV	NV (NV)	NV	NV (NV)	NV (NV)	NV	NV (NV)	NV (NV)
105	YSRCP	626 (64.14)	TDP	254 (26.02)	372 (38.12)	AIFB	51 (5.23)	45 (4.61)
106	YSRCP	637 (64.47)	TDP	262 (26.52)	375 (37.95)	AIFB	56 (5.67)	33 (3.34)
107	YSRCP	725 (68.59)	TDP	249 (23.56)	476 (45.03)	AIFB	39 (3.69)	44 (4.16)
108	YSRCP	636 (68.39)	TDP	233 (25.05)	403 (43.34)	AIFB	29 (3.12)	32 (3.44)
109	YSRCP	502 (52.35)	TDP	415 (43.27)	87 (9.08)	AIFB	15 (1.56)	27 (2.82)
110	YSRCP	270 (53.68)	TDP	186 (36.98)	84 (16.7)	AIFB	24 (4.77)	23 (4.57)

Contd....

Socio-Economic Amenities - Rural

Access to Education Facilities

Particulars	Number of Villages (% of Population)				
	Available	Not Available	If Not Available (Distance of Nearest Facility)		
			A	B	C
Govt. Primary School	79 (100)	1 (0)	0 (0)	1 (0)	0 (0)
Private Primary School	10 (25)	70 (75)	0 (0)	0 (0)	0 (0)
Govt. Middle School	54 (86)	26 (14)	13 (7)	10 (3)	2 (2)
Private Middle School	6 (21)	74 (79)	0 (0)	0 (0)	0 (0)
Govt. Secondary School	21 (45)	59 (55)	14 (12)	35 (29)	8 (9)
Private Secondary School	6 (25)	74 (75)	0 (0)	0 (0)	0 (0)
Govt. Senior Secondary School	3 (13)	77 (87)	3 (2)	26 (26)	40 (46)
Private Senior Secondary School	2 (9)	78 (91)	2 (2)	2 (2)	2 (2)
Govt. Arts and Science Degree College	0 (0)	80 (100)	1 (4)	17 (12)	62 (84)
Private Arts and Science Degree College	0 (0)	80 (100)	0 (0)	0 (0)	0 (0)
Govt. Engineering College	0 (0)	80 (100)	0 (0)	0 (0)	51 (58)
Private Engineering College	0 (0)	80 (100)	0 (0)	0 (0)	29 (42)
Govt. Medicine College	0 (0)	80 (100)	0 (0)	0 (0)	80 (100)
Private Medicine College	0 (0)	80 (100)	0 (0)	0 (0)	0 (0)
Govt. Management Institute	0 (0)	80 (100)	0 (0)	0 (0)	79 (98)
Private Management Institute	0 (0)	80 (100)	0 (0)	0 (0)	1 (2)
Govt. Polytechnic	0 (0)	80 (100)	2 (5)	21 (18)	53 (72)
Private Polytechnic	0 (0)	80 (100)	0 (0)	0 (0)	4 (5)
Govt. Vocational Training School/ITI	0 (0)	80 (100)	0 (0)	0 (0)	0 (0)
Private Vocational Training School/ITI	5 (23)	75 (77)	8 (7)	38 (40)	29 (30)
Govt. Non Formal Training Centre	0 (0)	80 (100)	0 (0)	1 (0)	79 (100)
Private Non Formal Training Centre	0 (0)	80 (100)	0 (0)	0 (0)	0 (0)
Govt. School For Disabled	0 (0)	80 (100)	0 (0)	1 (0)	79 (100)
Private School For Disabled	0 (0)	80 (100)	0 (0)	0 (0)	0 (0)
Government Others	0 (0)	80 (100)	0 (0)	0 (0)	0 (0)
Private Others	0 (0)	80 (100)	0 (0)	0 (0)	0 (0)

Note : Distance A : Less than 5 km; B : Between 5-10 km; C : 10+ km.; Source : Data Analysis is based on 2011 Census.

DISCLAIMER

The Terms of Use and Disclaimer of Datanet India Private Limited (hereinafter referred to as "Datanet") for use of this analysis report of **Kadiri Assembly Constituency (Kadiri Vidhan Sabha)** :-

1. **Assembly Factbook™** is a Registered Trade Mark owned by Datanet.
2. All the maps are sketched and graphical representation only and have not been drawn to the scale and also not to represent the actual geographical area or boundary of the unit.
3. The data for the aforesaid analysis is based on authentic sources and has been culled from the various publications of Census, CSO and NSSO for district and block level data, various central and state government departments, Central & State Elections Commissions and the concerned Returning Officers' releases, Electoral Rolls, Election results and allied publications, internal assessment, surveys, estimates and analysis. Therefore, certain adjustment of data at micro level may have been done to arrive closer to the macro data.
4. Data have been provided on an "As Is" and "As AVAILABLE" basis
5. The colours shown in the maps or diagram and charts of a particular party, alliance or AC are indicative and do not represent them.
6. This publication which includes maps, sheets, graphs and data would be the property under copyright of Datanet only. The user may use these for its internal study, analysis and research purposes. It's public display, re-selling or any commercial uses by the user are not allowed.
7. Datanet has taken due care and caution in compilation and processing of data and allied information, but does not guarantee the accuracy, adequacy or completeness of any information/analysis and will be not responsible for any errors or omissions or for the results obtained from the use of such information/analysis.
8. All the contents for the publication have been culled from various authentic sources and Datanet reasonably believes such sources to be reliable, but does not make any representations, express or implied as to the accuracy or fitness of use of such information. The information or contents of the information/analysis do not constitute advice and should not be relied upon in making (or refraining from making) any decision. Any reliance placed upon the information provided by Datanet is the sole responsibility and strictly at the user's risk.
9. In no event will Datanet be liable for any damages (including, without limitation, damages for loss of business projects, or loss of profits) arising in contract, tort or otherwise from the use of or inability to use any of its contents, or from any action taken (or refrained from being taken) as a result of using the analysis or any of its contents. Datanet its directors, owners, editors, officials, employees, distributor and agents or any associate will not be liable for any errors in the information contained or any consequences arising from the use of the contents of the provided information/analysis.
10. If any provision of these terms and conditions is held invalid or illegal or unenforceable for any reason by any court of competent jurisdiction, such provision shall be severed and the remainder of provisions of the terms and conditions shall continue in full force and effect as if the Term of Use had been executed with the invalid, illegal or unenforceable provision eliminated.
11. If there are any discrepancies in the information provided, please bring it to attention of Datanet for suitable rectification measures.

Buy Online This Complete Book At
Datanet India eBooks Store

www.indiastatpublications.com

or go directly at

[http://www.indiastatpublications.com/
Assembly_factbook/Andhra_Pradesh/Hindupur/ Kadiri](http://www.indiastatpublications.com/Assembly_factbook/Andhra_Pradesh/Hindupur/Kadiri)

 **india**stat**elections**

ISBN . 978-93-87415-42-3

