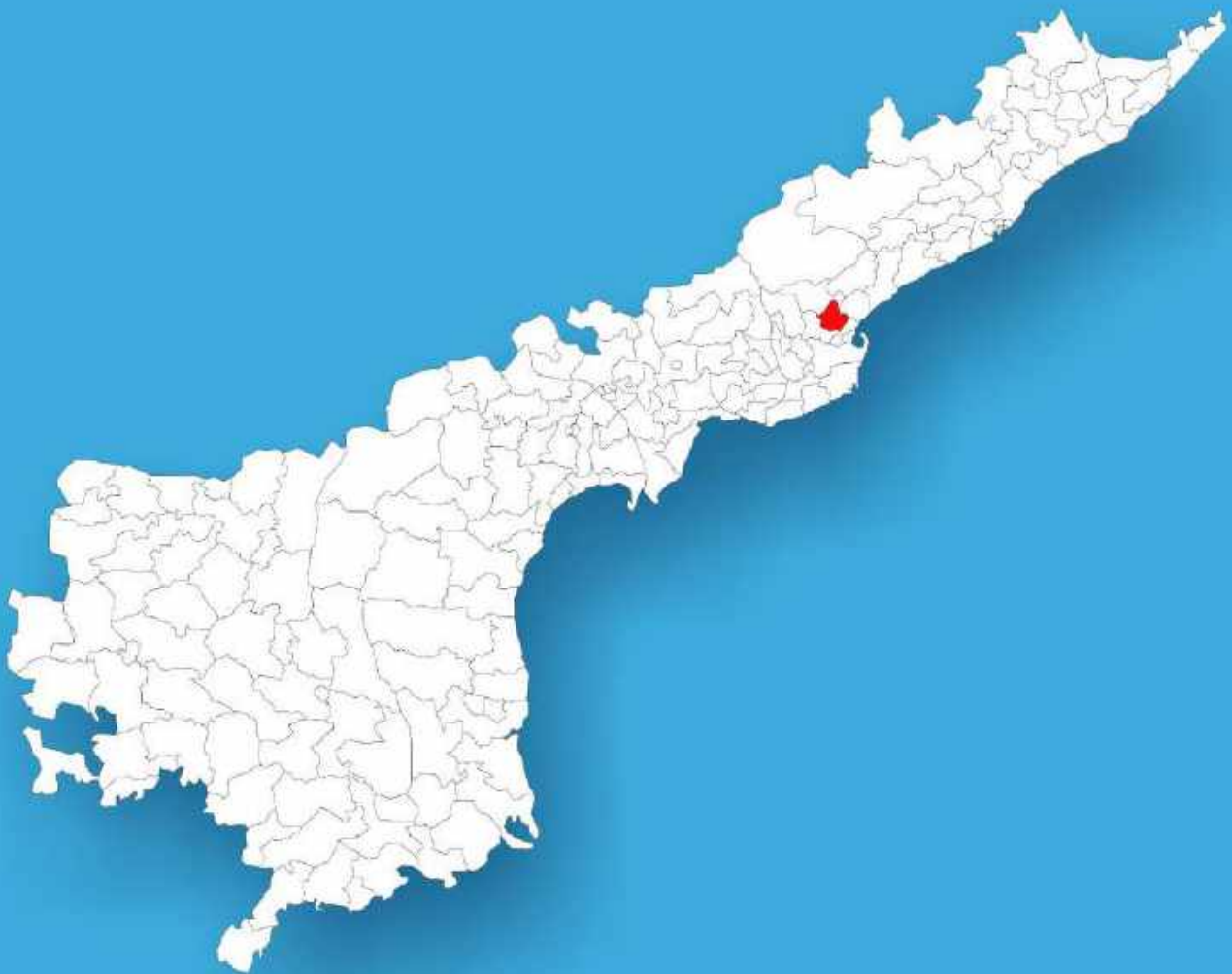




Andhra Pradesh

Assembly Factbook™

Peddapuram Assembly Constituency



Key Electoral Data of Peddapuram
Assembly Constituency (Vidhan Sabha)

Andhra Pradesh
Assembly FactbookTM
Peddapuram Assembly Constituency



Peddapuram Vidhan Sabha

Editor & Director

Dr. R.K. Thukral

Research Editor

Dr. Shafeeq Rahman

Compiled, Researched and Published by Datanet India Pvt. Ltd.

D-100, 1st Floor,

Okhla Industrial Area, Phase-I,
New Delhi- 110020.

Ph.: 91-11- 43580781-84

Email : support@indiastatpublications.com

Website : www.indiastatelections.com

Online Book Store :

www.indiastatpublications.com

Report No. : AFB/AP-039-0125

ISBN : 978-93-87415-90-4

First Edition : January, 2018

Eighth Updated Edition : January, 2025

Price : Rs. 11500/-

US\$ 310

© Datanet India Pvt. Ltd.

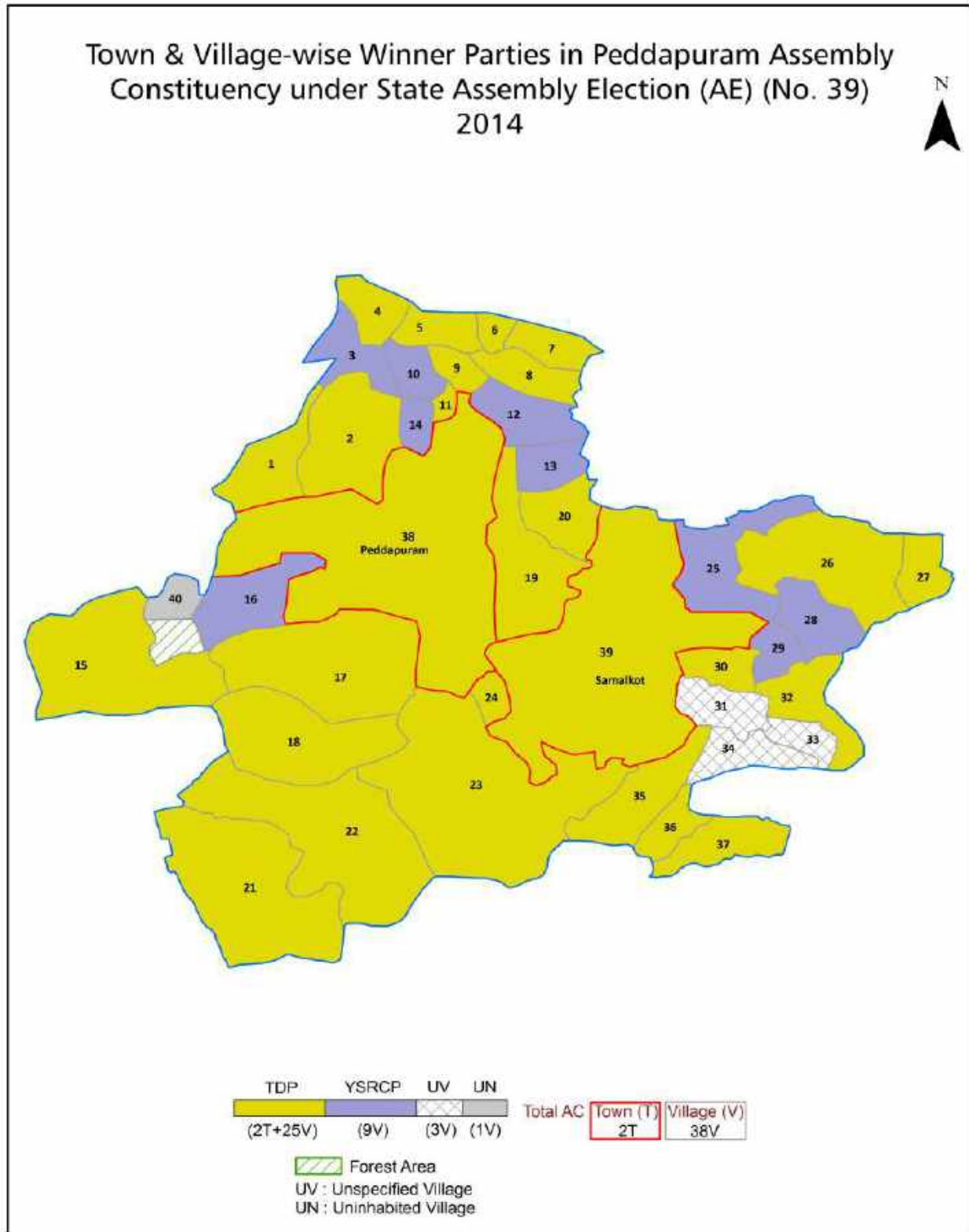
All rights reserved. No part of this book may be reproduced, stored in a retrieval system or transmitted in any form or by any means, mechanical photocopying, photographing, scanning, recording or otherwise without the prior written permission of the publisher. Please refer to Disclaimer at page no. 199 for the use of this publication.

Printed in India

Contents

No.	Particulars	Page No.
	Introduction	
1	Assembly Constituency - (Vidhan Sabha) at a Glance Features of Assembly as per Delimitation Commission of India (2008)	1-2
	Location and Political Maps	
2	Location Map Boundaries of Assembly Constituency - (Vidhan Sabha) in District Boundaries of Assembly Constituency under Parliamentary Constituency - (Lok Sabha) Town & Village-wise Winner Parties- 2024-PE, 2024-AE, 2019-PE, 2019-AE, 2014-PE, 2014-AE, 2009-PE and 2009-AE	3-11
	Administrative Setup (2011)	
3	District Sub-district Towns Villages Inhabited Villages Uninhabited Villages Village Panchayat Intermediate Panchayat	12-15
	Demographics (2011)	
4	Population Households Rural/Urban Population Towns and Villages by Population Size Sex Ratio (Total & 0-6 Years) Religious Population Social Population Literacy Rate	16-17
	Electoral Features	
5	Important Dates of Last Elections Held Electors by Gender Service Electors Voters Voters Turnout Polling Stations & Average Number of Electors per Polling Station Electors by Age Group Present Elected Representatives	18-23
	Historical Summary Election Results	
6	Vote Share of Major Parties Winning Margin (Number & Percentage Polarity of Parties Summary Result of Assembly Segment of Parliamentary Elections 2024, 2019, 2014, 2009, 2004 and 1999 Summary Result of Assembly Elections 2024, 2019, 2014, 2009, 2004, 1999, 1994, 1989, 1985, 1983, 1978, 1972, 1967, 1962 and 1955	24-46
	Polling Station Level Election Results	
7	Name and Number of Polling Station 2024-PE, 2024-AE, 2019-PE, 2019-AE, 2014-PE, 2014-AE, 2009-PE and 2009-AE Polling Station-wise Electoral, Voter & Voter Turnout 2024-PE, 2024-AE, 2019-PE, 2019-AE, 2014-PE, 2014-AE, 2009-PE and 2009-AE Polling Station wise Elections Results 2024-PE, 2024-AE, 2019-PE, 2019-AE, 2014-PE, 2014-AE, 2009-PE and 2009-AE	47-177
	Share of Assembly Constituency	
8	Share of Assembly Constituency - (Vidhan Sabha) in State, District and Parliamentary Constituency - (Lok Sabha)	178
	Socio-Economic Amenities (2011)	
9	Access to Administrative Units Agricultural, Manufacturing and Industrial Commodities Demographic Indicators Education Health & Manpower Drinking Water Supply Sanitation Entertainment and Recreations Infrastructure Power Food Allocation Distribution and Marketing of Agriculture Commodities Infrastructure Transport and Road Infrastructure Communication Banking and Financial Services Land Use Irrigation Source	180-194
10	Abbreviation & Sources	196-197
11	Disclaimer	199

Location & Political Map



Administrative Setup

List of Village Panchayat & Intermediate Panchayat (Block) Name - 2011

Village Name	Village Panchayat Name	Intermediate Panchayat Name
Anuru	Anuru & Kondapalle	Peddapuram
Boyanapudi	Boyanapudi	Samalkota
Chadalada	Chadalada	Peddapuram
Chandramampalle	Chandramampalle	Peddapuram
Chinabrahmadevam	Chinabrahmadevam	Peddapuram
Divili	Divili	Peddapuram
G. Medapadu	G.Medapadu, G.Kothuru	Samalkota
G. Ragampeta	G.Ragampeta	Peddapuram
Gorinta	Gorinta	Peddapuram
Gudivada	Gudivada	Peddapuram
J. Thimmapuram	J.Thimmapuram	Peddapuram
Jaggammagaripeta (R)	Hussainpuram	Samalkota
Kandrakota	Kandrakota	Peddapuram
Kapavaram	Kapavaram	Samalkota
Kattamuru	Kattamuru	Peddapuram
Koppavaram	Atchampeta	Samalkota
Madhavapatnam	Madhavapatnam	Samalkota
Mamilladoddi	Unduru	Samalkota
Marlava	Marlava	Peddapuram
Navara	Navara	Samalkota
P. Vemavaram	P. Vemavaram	Samalkota
Panasapadu	Panasapadu, Gonchala, Atchampeta	Samalkota
Pandravada	Pandravada	Samalkota
Pavara	Pavara	Samalkota
Pedabrahmadevam	Pedabrahmadevam	Samalkota
Pulimeru	Pulimeru	Peddapuram
Rayabhupalapatnam	Rayabhupalapatnam & R.B.Kothuru	Peddapuram
Sirivada	Sirivada	Peddapuram
Tatiparthi	Tatiparthi	Peddapuram

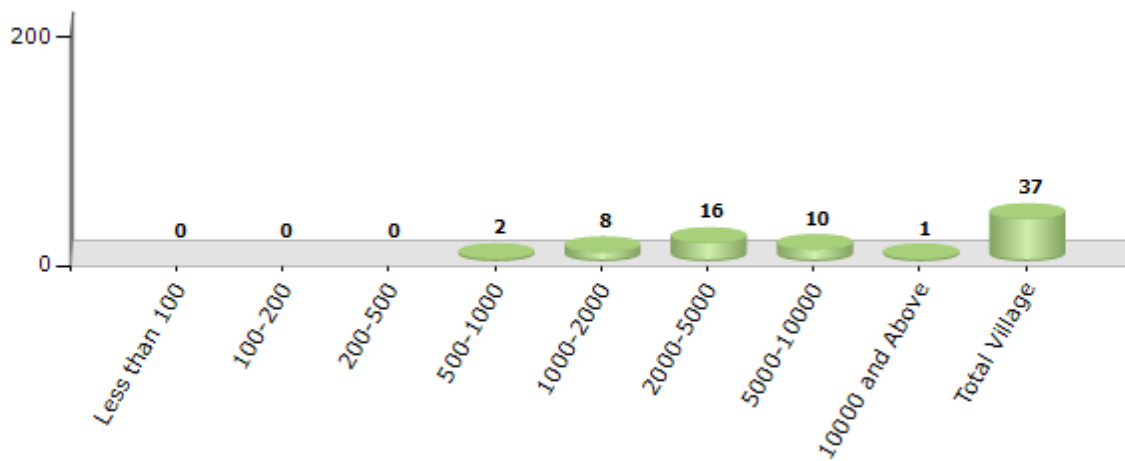
Contd....

Demographics

Number of Villages by Population Size - 2011

Less than 100	100-200	200-500	500-1000	1000-2000	2000-5000	5000-10000	10000 and Above	Total Village
0	0	0	2	8	16	10	1	37

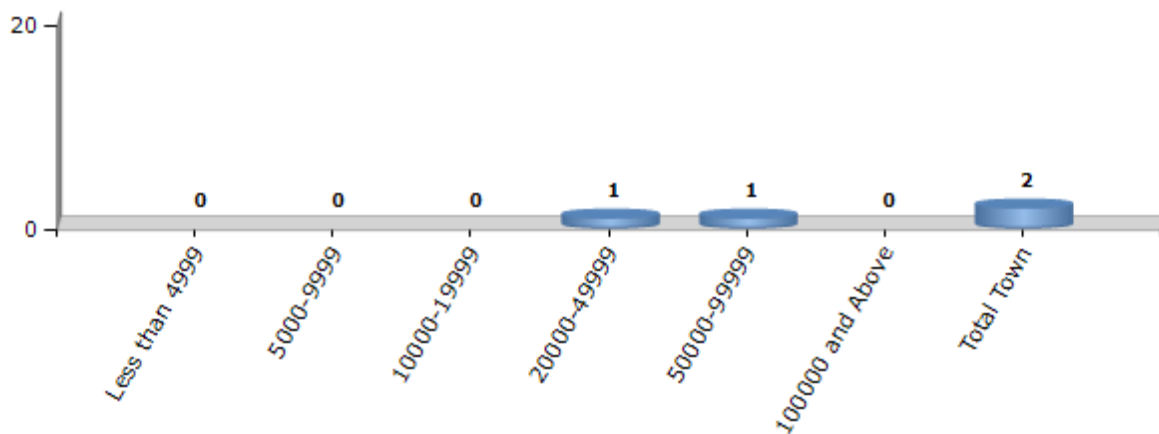
Number of Villages by Population Size - 2011



Number of Towns by Population Size - 2011

Less than 4999	5000-9999	10000-19999	20000-49999	50000-99999	100000 and Above	Total Town
0	0	0	1	1	0	2

Number of Towns by Population Size - 2011

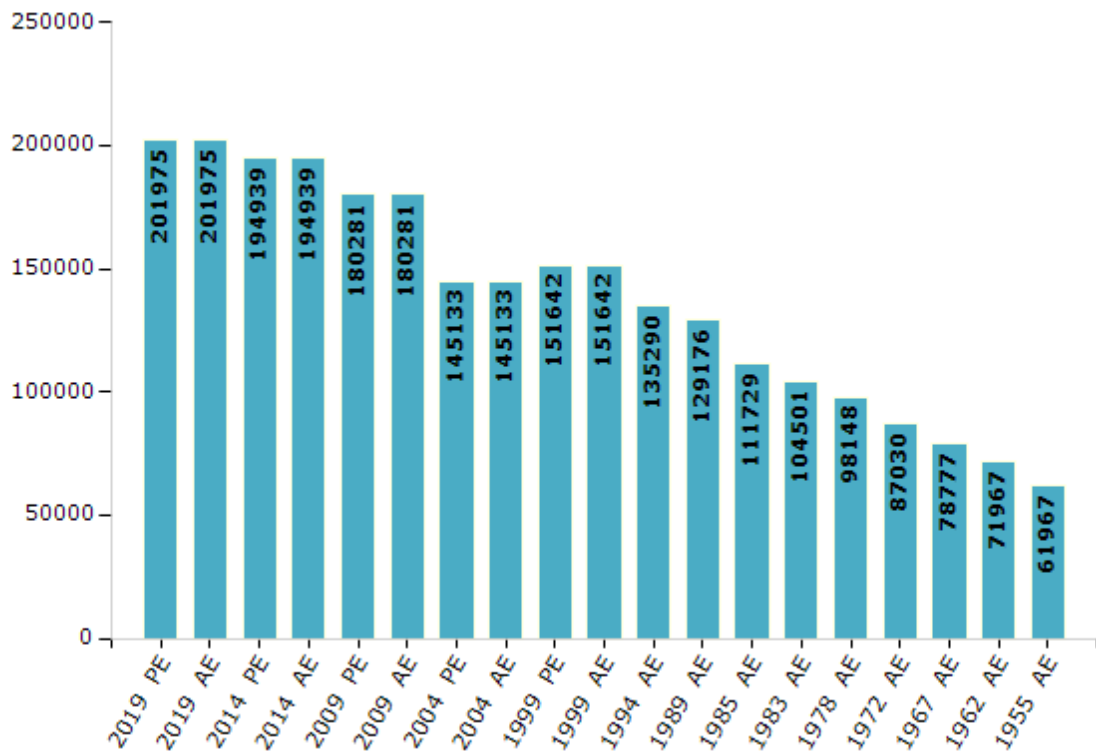


Electoral Features

Electors by Male & Female

Year	Male	Female	Others	Total	Year	Male	Female	Others	Total
2019 PE	100219	101740	16	201975	1994 AE	66731	68559	-	135290
2019 AE	100219	101740	16	201975	1989 AE	63477	65699	-	129176
2014 PE	97305	97619	15	194939	1985 AE	53624	58105	-	111729
2014 AE	97305	97619	15	194939	1983 AE	49973	54528	-	104501
2009 PE	88363	91918	-	180281	1978 AE	47123	51025	-	98148
2009 AE	88363	91918	-	180281	1972 AE	42103	44927	-	87030
2004 PE	71023	74110	-	145133	1967 AE	-	-	-	78777
2004 AE	71023	74110	-	145133	1962 AE	-	-	-	71967
1999 PE	74695	76947	-	151642	1957 AE	-	-	-	-
1999 AE	74695	76947	-	151642	1955 AE	-	-	-	61967

Number of Electors

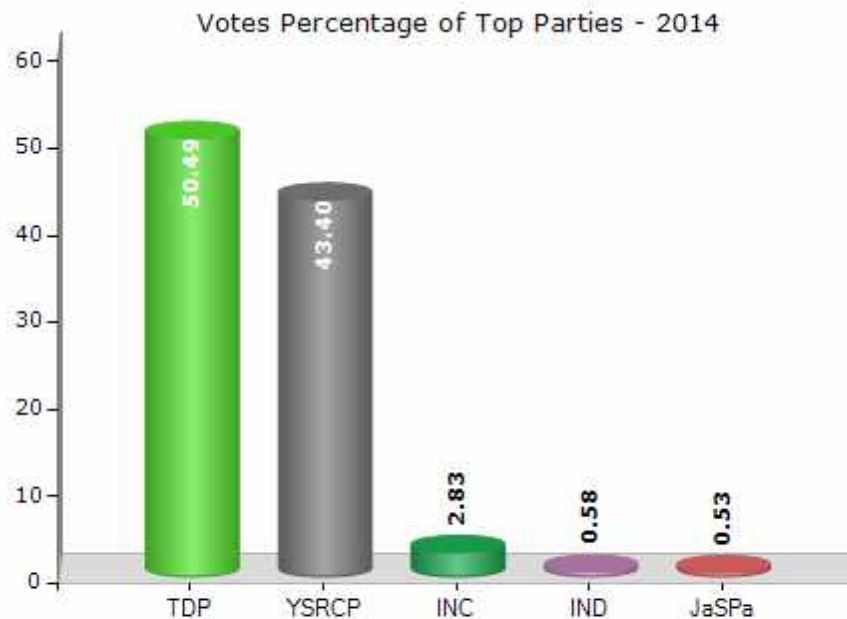


Note : AE : Assembly Election, PE : Assembly Segment of Parliamentary Election

Historical Summary Election Results

Summary Result of Assembly Election - 2014

Candidate Name	Party	Votes	Votes %
Nimmakayala China Rajappa	TDP	75914	50.49
Thota Subbarao Naidu	YSRCP	65251	43.4
Tummala Dorababu	INC	4261	2.83
Narlajarla Harathi	IND	877	0.58
Chintam Vienkatram	JaSPa	797	0.53
Dommeti Raja Sanjay	AAP	646	0.43
Venkata Reddy Sabbella	BSP	515	0.34
Kunche Nagalakshmi	PPOI	245	0.16
Duvva Krishnarjuna	IND	239	0.16
Pitta Janaki Ramarao	RPI	239	0.16
Alapu Chinnarao	IND	234	0.16
Gompa Ramakrishna	IND	194	0.13
Pepakayala Dorababu	IND	137	0.09
	NOTA	808	0.54



Polling Station Level Election Results

Number and Name of Polling Stations (PS) (2019 AE)

Number of Polling Stations	Name of Polling Stations	Number of Polling Stations	Name of Polling Stations
1	Mandal Praja Parishad Adarsha Primary School, J.Thimmapuram Mandal Praja Parishad Adharsha Primary School, East Facing New Building, Room No. 1, J.Thimmapuram	22	Z.P.H. School Building Zpphschoolgroundflor2Nd Roomfromsouth
2	Mandal Praja Parishad Adarsha Primary School, J.Thimmapuram Mandal Praja Parishad Adharsha Primary School, East Facing Ssa Middle New Building, No. 2 J.Thimmapuram	23	Z.P.H. School Building Zpphschoolgroundflor3Rdroomfromsouth
3	Mandal Praja Parishad Adarsha Primary School, J.Thimmapuram Mandal Praja Parishad Adharsha Primary School, New Building, South East Room No. 3 J.Thimmapuram	24	Mandal Praja Parishad Adarsha Primary School Mandal Praja Parishad Adarsha School, Eastern Side Building, Eastern Side Room, Marlava
4	M.P.P.Primary School S.S.A Building, Kandrakota Ssa Building Ground Floor	25	Mandal Praja Parishad Adarsh School, South Side Building, Westren Side Room, Marlava M.P.P. Adharsh School, South Side Building, West Side
5	M.P.P.Primary School S.S.A Building Mpppscl (Main) Ssa Build G. Flore East	26	M.P.P.U.P. School, S S A Building Mandal Praja Parishad Upper Primary School S.S.A. Building Eastern Side Room
6	Zilla Praja Parishad High School, Kattamuru Z.P.P. High School Building Ground Floor Eastren Side	27	Mandal Praja Parishad Upper Primary School S.S.A. Building Mandal Praja Parishad Upper Primary School S.S.A. Building Western Side Room
7	Zilla Praja Parishad High School, Kattamuru Zpphscl Bldg Groundflor West	28	M.P.P.U.P. School, S S A Westren Side Cornor Room No 3
8	M.P.P. Special Primary School .Kattamuru M.P.P. Spl. Primary School Building South Side Buildi	29	M.P.P.P. School Mpppschool East Side Building South Side Room
9	M.P.P.U.P. School, Turpupakala M.P.P.U.Primaryschoolbuilding Eastren Side Room	30	M.P.P.P. School Mppprimary School Eastern Side North Room
10	Zilla Praja Parishad High School Building Zilla Praja Parishad High School Building Western Side 2nd Building 1St Room From North	31	Zilla Praja Parishad High School, South Side Building Room No. 3 Zpp High School, South Side, Chandrampalli Room No. 3
11	Zilla Praja Parishad High School Zilla Praja Parishad High School Western Side 1St Building, 2nd Room From North	32	Zilla Praja Parishad High School, South Side Building, Room No. 4 Chandrampalli (Divili Zpp High School, South Side, Chandrampalli Room No. 4
12	Z.P.P.H. School, Kattamuru Z.P.H.Scll Westside Istbuld 1St Room Form Noth	33	Mandal Praja Parishad Model Primary School M.P.P. Model Primary School, Divili Room No. 1
13	Mandal Praja Parishad Adarsha Primary School Mandal Praja Parishad Adarsha Primary School, Additional Building, Western Side 1St Building, Left Side Room	34	Mandal Praja Parishad Model Primary School M.P.P. Model Primary School, Divili Room No. 2
14	Mandal Praja Parishad Adarsha Primary School Mandal Praja Parishad Adarsha Primary School, Western Side 3Rd Building From North	35	Mandal Praja Parishad Model Primary School M.P.P. Model Primary School, Divili Room No. 3
15	Mandal Praja Parishad Adarsha Primary School Mandal Praja Parishad Adarsha Primary School, No. 1 Building, South Side Building, Sc Peta	36	Mandal Praja Parishad Model Primary School East Facing Building North Side Cornor Room 3
16	Mandal Praja Parishad Adarsha Primary School Mandal Praja Parishad Adarsha Primary School, No. 1 Building, Western Side Building	37	M.P.P.P. School M.P.P.P. School Newbuilding2Ndroom From South
17	Mandal Praja Parsihad Ele. School, Sarvasiksha Abiyen School Building, Peddapuram Mpppschoolbuilding Eastern Side room	38	M.P.P.P. School Mandal Praja Parishad Primary School New Building 4Th Room From South
18	Mandal Praja Parishad Ele. School, Sarvasiksha Abiyen School Building, Peddapuram Ward-1 (Gudiwada) M.P.P. Ele. School, Sarvasiksh Abyian Building, Ward1	39	M.P.P.Spl. Primary School M.P.Spl.P.School Building, East Side Sc Peta
19	M.P.P. Primary School M.P.P.P.School Newbuilding	40	M.P.P.Primary School Mandal Praja Parishad Primary School Eastren Side
20	Mandal Praja Parishad Adarsha Primary School Mandal Praja Parishad Adarsha Primary School, New Building East Side, Ulimeswaram	41	M.P.P.Primary School Mandal Praja Parishad Primary School Eastren Side
21	Mandal Praja Parishad Adarsha Primary School, New Building Mandal Praja Parishad Adarsha Primary School, New Building West Side, Ulimeswaram	42	Mandal Praja Parishad Special Primary School

Contd....

Polling Station Level Election Results

Polling Station-wise Votes Secured by Overall Top Five Parties in Peddapuram Assembly in Assembly Election (AE) under Kakinada Parliamentary Constituency in Andhra Pradesh (2019)

Number of Polling Station	Winner - Nimmakayala China Rajappa (TDP)	Runner-up - Thota Saraswathi Ane Vani (YSRCP)	3rd - Tummala Ramaswamy (Babu) (JnP)	4th - Dora Babu Tummala (INC)	5th - Yarlagadda Ramkumar (BJP)	NOTA	Other	Total Votes Secured
36	157	214	50	3	3	5	4	436
37	147	235	363	14	5	11	20	795
38	210	195	341	25	7	13	6	797
39	156	414	280	30	4	16	7	907
40	438	277	100	5	4	14	5	843
41	370	300	79	11	2	8	6	776
42	357	263	108	9	0	10	3	750
43	564	355	118	10	9	25	15	1096
44	371	204	82	2	4	8	12	683
45	531	365	66	10	2	21	6	1001
46	247	325	117	8	3	25	15	740
47	332	324	159	6	4	23	12	860
48	457	209	121	9	2	12	14	824
49	321	522	68	11	2	3	11	938
50	211	393	55	7	2	7	6	681
51	391	368	142	13	14	17	13	958
52	336	297	92	8	7	4	6	750
53	557	290	135	7	1	3	7	1000
54	203	405	60	7	3	3	2	683
55	296	410	150	15	2	3	2	878
56	406	280	109	8	4	2	10	819
57	317	149	73	7	2	4	2	554
58	210	134	44	6	6	1	0	401
59	643	299	90	15	18	5	8	1078
60	481	237	78	7	9	11	6	829
61	515	365	109	11	5	17	37	1059
62	500	262	156	9	6	4	9	946
63	568	304	86	14	5	11	7	995
64	488	351	102	15	6	13	10	985
65	538	386	151	6	6	12	7	1106
66	344	554	133	7	8	20	11	1077
67	506	301	95	13	8	12	8	943
68	364	353	119	7	5	6	12	866
69	379	393	71	9	3	7	6	868
70	381	335	127	14	7	9	13	886

Contd....

Polling Station Level Election Results

Winner, Runner-up and 3rd Party Position & Winning Margin According to Polling Stations in Peddapuram Assembly in Assembly Election (AE) under Kakinada Parliamentary Constituency in Andhra Pradesh (2019)

Polling Station Number	Winner Party	Winner Votes (%)	Runner-up Party	Runner-up Votes (%)	Winning Margin Votes (%)	Third Party	Third Party Votes (%)	Other Votes (%)
75	TDP	215 (48.86)	YSRCP	171 (38.86)	44 (10)	JnP	41 (9.32)	13 (2.95)
76	YSRCP	391 (48.88)	TDP	325 (40.63)	66 (8.25)	JnP	59 (7.38)	25 (3.13)
77	TDP	187 (47.83)	YSRCP	141 (36.06)	46 (11.77)	JnP	44 (11.25)	19 (4.86)
78	TDP	529 (58.45)	YSRCP	265 (29.28)	264 (29.17)	JnP	64 (7.07)	47 (5.19)
79	TDP	251 (44.19)	YSRCP	214 (37.68)	37 (6.51)	JnP	81 (14.26)	22 (3.87)
80	TDP	377 (46.77)	YSRCP	319 (39.58)	58 (7.19)	JnP	84 (10.42)	26 (3.23)
81	TDP	282 (46.08)	YSRCP	236 (38.56)	46 (7.52)	JnP	69 (11.27)	25 (4.08)
82	TDP	255 (44.04)	YSRCP	240 (41.45)	15 (2.59)	JnP	57 (9.84)	27 (4.66)
83	TDP	238 (52.19)	YSRCP	137 (30.04)	101 (22.15)	JnP	60 (13.16)	21 (4.61)
84	TDP	244 (41.78)	YSRCP	218 (37.33)	26 (4.45)	JnP	99 (16.95)	23 (3.94)
85	TDP	597 (61.99)	YSRCP	246 (25.55)	351 (36.44)	JnP	84 (8.72)	36 (3.74)
86	TDP	569 (66.24)	YSRCP	231 (26.89)	338 (39.35)	JnP	34 (3.96)	25 (2.91)
87	TDP	356 (46.72)	YSRCP	334 (43.83)	22 (2.89)	JnP	29 (3.81)	43 (5.64)
88	YSRCP	289 (45.58)	TDP	275 (43.38)	14 (2.2)	JnP	36 (5.68)	34 (5.36)
89	YSRCP	401 (46.9)	TDP	398 (46.55)	3 (0.35)	JnP	25 (2.92)	31 (3.63)
90	TDP	472 (56.12)	YSRCP	325 (38.64)	147 (17.48)	JnP	21 (2.5)	23 (2.73)
91	YSRCP	342 (35.55)	JnP	316 (32.85)	26 (2.7)	TDP	245 (25.47)	59 (6.13)
92	TDP	281 (34.44)	YSRCP	246 (30.15)	35 (4.29)	JnP	245 (30.02)	44 (5.39)
93	YSRCP	596 (56.98)	TDP	383 (36.62)	213 (20.36)	JnP	29 (2.77)	38 (3.63)
94	YSRCP	366 (50.41)	TDP	248 (34.16)	118 (16.25)	JnP	61 (8.4)	51 (7.02)
95	YSRCP	266 (35.8)	TDP	238 (32.03)	28 (3.77)	JnP	183 (24.63)	56 (7.54)
96	TDP	397 (52.51)	JnP	203 (26.85)	194 (25.66)	YSRCP	124 (16.4)	32 (4.23)
97	YSRCP	327 (34.42)	TDP	297 (31.26)	30 (3.16)	JnP	270 (28.42)	56 (5.89)
98	TDP	339 (37.17)	YSRCP	277 (30.37)	62 (6.8)	JnP	229 (25.11)	67 (7.35)
99	YSRCP	365 (41.43)	TDP	359 (40.75)	6 (0.68)	JnP	137 (15.55)	20 (2.27)
100	TDP	445 (45.64)	YSRCP	304 (31.18)	141 (14.46)	JnP	186 (19.08)	40 (4.1)
101	YSRCP	335 (35.68)	TDP	312 (33.23)	23 (2.45)	JnP	262 (27.9)	30 (3.19)
102	JnP	331 (34.84)	YSRCP	286 (30.11)	45 (4.73)	TDP	283 (29.79)	50 (5.26)
103	TDP	360 (50.28)	JnP	211 (29.47)	149 (20.81)	YSRCP	125 (17.46)	20 (2.79)
104	TDP	160 (34.19)	JnP	142 (30.34)	18 (3.85)	YSRCP	139 (29.7)	27 (5.77)
105	TDP	316 (43.59)	YSRCP	187 (25.79)	129 (17.8)	JnP	183 (25.24)	39 (5.38)
106	YSRCP	338 (44.13)	TDP	281 (36.68)	57 (7.45)	JnP	126 (16.45)	21 (2.74)
107	YSRCP	422 (44.56)	TDP	386 (40.76)	36 (3.8)	JnP	90 (9.5)	49 (5.17)
108	YSRCP	348 (51.1)	TDP	237 (34.8)	111 (16.3)	JnP	76 (11.16)	20 (2.94)
109	TDP	403 (47.19)	YSRCP	253 (29.63)	150 (17.56)	JnP	160 (18.74)	38 (4.45)
110	YSRCP	184 (48.04)	TDP	154 (40.21)	30 (7.83)	JnP	22 (5.74)	23 (6.01)
111	TDP	490 (50.99)	YSRCP	365 (37.98)	125 (13.01)	JnP	72 (7.49)	34 (3.54)

Contd....

Socio-Economic Amenities - Rural

Access to Education Facilities

Particulars	Number of Villages (% of Population)				
	Available	Not Available	If Not Available (Distance of Nearest Facility)		
			A	B	C
Govt. Primary School	37 (100)	0 (0)	0 (0)	0 (0)	0 (0)
Private Primary School	9 (33)	28 (67)	0 (0)	0 (0)	0 (0)
Govt. Middle School	28 (87)	9 (13)	7 (12)	2 (1)	0 (0)
Private Middle School	2 (9)	35 (91)	0 (0)	0 (0)	0 (0)
Govt. Secondary School	17 (66)	20 (34)	15 (25)	4 (8)	0 (0)
Private Secondary School	2 (5)	35 (95)	1 (1)	0 (0)	0 (0)
Govt. Senior Secondary School	1 (3)	36 (97)	3 (8)	14 (48)	4 (9)
Private Senior Secondary School	1 (3)	36 (97)	9 (20)	4 (6)	1 (4)
Govt. Arts and Science Degree College	0 (0)	37 (100)	5 (12)	19 (58)	5 (13)
Private Arts and Science Degree College	1 (2)	36 (98)	4 (7)	3 (8)	0 (0)
Govt. Engineering College	0 (0)	37 (100)	0 (0)	2 (6)	7 (13)
Private Engineering College	2 (7)	35 (93)	7 (13)	17 (54)	2 (7)
Govt. Medicine College	0 (0)	37 (100)	0 (0)	5 (15)	30 (73)
Private Medicine College	0 (0)	37 (100)	0 (0)	1 (2)	1 (10)
Govt. Management Institute	0 (0)	37 (100)	4 (6)	14 (40)	10 (20)
Private Management Institute	0 (0)	37 (100)	1 (2)	7 (27)	1 (5)
Govt. Polytechnic	0 (0)	37 (100)	0 (0)	5 (12)	21 (51)
Private Polytechnic	1 (5)	36 (95)	1 (2)	8 (26)	1 (5)
Govt. Vocational Training School/ITI	0 (0)	37 (100)	1 (1)	11 (30)	13 (31)
Private Vocational Training School/ITI	1 (2)	36 (98)	2 (5)	8 (27)	1 (5)
Govt. Non Formal Training Centre	0 (0)	37 (100)	0 (0)	5 (15)	32 (85)
Private Non Formal Training Centre	0 (0)	37 (100)	0 (0)	0 (0)	0 (0)
Govt. School For Disabled	0 (0)	37 (100)	0 (0)	5 (15)	32 (85)
Private School For Disabled	0 (0)	37 (100)	0 (0)	0 (0)	0 (0)
Government Others	0 (0)	37 (100)	0 (0)	0 (0)	0 (0)
Private Others	0 (0)	37 (100)	0 (0)	0 (0)	0 (0)

Note : Distance A : Less than 5 km; B : Between 5-10 km; C : 10+ km.; Source : Data Analysis is based on 2011 Census.

DISCLAIMER

The Terms of Use and Disclaimer of Datanet India Private Limited (hereinafter referred to as "Datanet") for use of this analysis report of **Peddapuram Assembly Constituency (Peddapuram Vidhan Sabha)** :-

1. **Assembly Factbook™** is a Registered Trade Mark owned by Datanet.
2. All the maps are sketched and graphical representation only and have not been drawn to the scale and also not to represent the actual geographical area or boundary of the unit.
3. The data for the aforesaid analysis is based on authentic sources and has been culled from the various publications of Census, CSO and NSSO for district and block level data, various central and state government departments, Central & State Elections Commissions and the concerned Returning Officers' releases, Electoral Rolls, Election results and allied publications, internal assessment, surveys, estimates and analysis. Therefore, certain adjustment of data at micro level may have been done to arrive closer to the macro data.
4. Data have been provided on an "As Is" and "As AVAILABLE" basis
5. The colours shown in the maps or diagram and charts of a particular party, alliance or AC are indicative and do not represent them.
6. This publication which includes maps, sheets, graphs and data would be the property under copyright of Datanet only. The user may use these for its internal study, analysis and research purposes. It's public display, re-selling or any commercial uses by the user are not allowed.
7. Datanet has taken due care and caution in compilation and processing of data and allied information, but does not guarantee the accuracy, adequacy or completeness of any information/analysis and will be not responsible for any errors or omissions or for the results obtained from the use of such information/analysis.
8. All the contents for the publication have been culled from various authentic sources and Datanet reasonably believes such sources to be reliable, but does not make any representations, express or implied as to the accuracy or fitness of use of such information. The information or contents of the information/analysis do not constitute advice and should not be relied upon in making (or refraining from making) any decision. Any reliance placed upon the information provided by Datanet is the sole responsibility and strictly at the user's risk.
9. In no event will Datanet be liable for any damages (including, without limitation, damages for loss of business projects, or loss of profits) arising in contract, tort or otherwise from the use of or inability to use any of its contents, or from any action taken (or refrained from being taken) as a result of using the analysis or any of its contents. Datanet its directors, owners, editors, officials, employees, distributor and agents or any associate will not be liable for any errors in the information contained or any consequences arising from the use of the contents of the provided information/analysis.
10. If any provision of these terms and conditions is held invalid or illegal or unenforceable for any reason by any court of competent jurisdiction, such provision shall be severed and the remainder of provisions of the terms and conditions shall continue in full force and effect as if the Term of Use had been executed with the invalid, illegal or unenforceable provision eliminated.
11. If there are any discrepancies in the information provided, please bring it to attention of Datanet for suitable rectification measures.

Buy Online This Complete Book At
Datanet India eBooks Store

www.indiastatpublications.com

or go directly at

[http://www.indiastatpublications.com/
Assembly_factbook/Andhra_Pradesh/Kakinada/ Peddapuram](http://www.indiastatpublications.com/Assembly_factbook/Andhra_Pradesh/Kakinada/Peddapuram)

 **india**stat**elections**

ISBN : 978-93-87415-90-4



9 789387 415904