



Andhra Pradesh

Assembly Factbook™

Prathipadu Assembly Constituency



Key Electoral Data of Prathipadu
Assembly Constituency (Vidhan Sabha)

Andhra Pradesh
Assembly FactbookTM
Prathipadu Assembly Constituency



Prathipadu Vidhan Sabha

Editor & Director

Dr. R.K. Thukral

Research Editor

Dr. Shafeeq Rahman

Compiled, Researched and Published by Datanet India Pvt. Ltd.

D-100, 1st Floor,

Okhla Industrial Area, Phase-I,
New Delhi- 110020.

Ph.: 91-11- 43580781-84

Email : support@indiastatpublications.com

Website : www.indiastatelections.com

Online Book Store :

www.indiastatpublications.com

Report No. : AFB/AP-036-0125

ISBN : 978-93-87415-97-3

First Edition : January, 2018

Eighth Updated Edition : January, 2025

Price : Rs. 11500/-

US\$ 310

© Datanet India Pvt. Ltd.

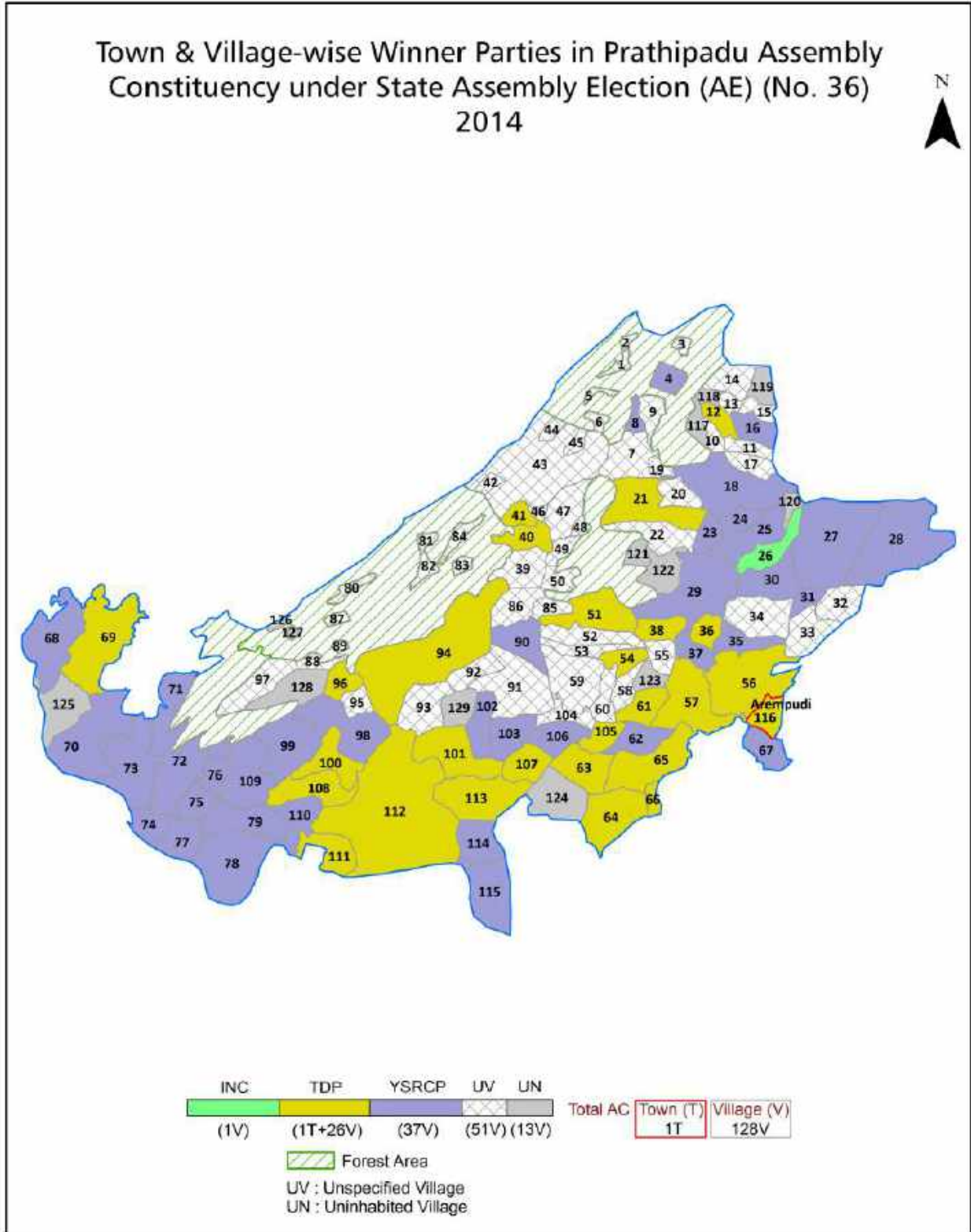
All rights reserved. No part of this book may be reproduced, stored in a retrieval system or transmitted in any form or by any means, mechanical photocopying, photographing, scanning, recording or otherwise without the prior written permission of the publisher. Please refer to Disclaimer at page no. 203 for the use of this publication.

Printed in India

Contents

No.	Particulars	Page No.
	Introduction	
1	Assembly Constituency - (Vidhan Sabha) at a Glance Features of Assembly as per Delimitation Commission of India (2008)	1-2
	Location and Political Maps	
2	Location Map Boundaries of Assembly Constituency - (Vidhan Sabha) in District Boundaries of Assembly Constituency under Parliamentary Constituency - (Lok Sabha) Town & Village-wise Winner Parties- 2024-PE, 2024-AE, 2019-PE, 2019-AE, 2014-PE, 2014-AE, 2009-PE and 2009-AE	3-11
	Administrative Setup (2011)	
3	District Sub-district Towns Villages Inhabited Villages Uninhabited Villages Village Panchayat Intermediate Panchayat	12-18
	Demographics (2011)	
4	Population Households Rural/Urban Population Towns and Villages by Population Size Sex Ratio (Total & 0-6 Years) Religious Population Social Population Literacy Rate	19-20
	Electoral Features	
5	Important Dates of Last Elections Held Electors by Gender Service Electors Voters Voters Turnout Polling Stations & Average Number of Electors per Polling Station Electors by Age Group Present Elected Representatives	21-26
	Historical Summary Election Results	
6	Vote Share of Major Parties Winning Margin (Number & Percentage Polarity of Parties Summary Result of Assembly Segment of Parliamentary Elections 2024, 2019, 2014, 2009, 2004 and 1999 Summary Result of Assembly Elections 2024, 2019, 2014, 2009, 2004, 1999, 1994, 1989, 1985, 1983, 1978, 1972, 1967, 1962 and 1955	27-49
	Polling Station Level Election Results	
7	Name and Number of Polling Station 2024-PE, 2024-AE, 2019-PE, 2019-AE, 2014-PE, 2014-AE, 2009-PE and 2009-AE Polling Station-wise Electoral, Voter & Voter Turnout 2024-PE, 2024-AE, 2019-PE, 2019-AE, 2014-PE, 2014-AE, 2009-PE and 2009-AE Polling Station wise Elections Results 2024-PE, 2024-AE, 2019-PE, 2019-AE, 2014-PE, 2014-AE, 2009-PE and 2009-AE	50-181
	Share of Assembly Constituency	
8	Share of Assembly Constituency - (Vidhan Sabha) in State, District and Parliamentary Constituency - (Lok Sabha)	182
	Socio-Economic Amenities (2011)	
9	Access to Administrative Units Agricultural, Manufacturing and Industrial Commodities Demographic Indicators Education Health & Manpower Drinking Water Supply Sanitation Entertainment and Recreations Infrastructure Power Food Allocation Distribution and Marketing of Agriculture Commodities Infrastructure Transport and Road Infrastructure Communication Banking and Financial Services Land Use Irrigation Source	184-198
10	Abbreviation & Sources	200-201
11	Disclaimer	203

Location & Political Map



Administrative Setup

List of Village Panchayat & Intermediate Panchayat (Block) Name - 2011

Village Name	Village Panchayat Name	Intermediate Panchayat Name
A. Mallavaram	A. Mallavaram	Rowthulapudi
Ammirekhala	Velangi	Sankhavaram
Ankampalem	Pedamallapuram	Sankhavaram
Annavaram	Annavaram	Sankhavaram
Anumarthi	Velangi	Sankhavaram
Atchampeta	Jaggampeta	Sankhavaram
Avethi	Velangi	Sankhavaram
Balarampuram	Balarampuram	Rowthulapudi
Bapabhupalapatnam	A. Mallavaram	Rowthulapudi
Bapannadhara	Buradakota	Prathipadu
Bavuruvaka	Bavuruvaka	Prathipadu
Bhadravaram	Bhadravaram	Yeleswaram
Billavaka	Srungadhara Agraharam	Rowthulapudi
Buradakota	Buradakota	Prathipadu
Chakirevulapalem	Jaldam	Rowthulapudi
Challeru	Jaldam	Rowthulapudi
China Sankarlapudi	China Sankarlapudi	Prathipadu
Chintaluru	Chintaluru	Prathipadu
D. Pydipala	Jaldam	Rowthulapudi
Dabbadi	Raghavapatnam	Rowthulapudi
Dhara Jagannadhapuram	Srungadhara Agraharam	Rowthulapudi
Dhara Mallapuram	Velangi	Sankhavaram
Dharmavaram	Dharmavaram	Prathipadu
Diguva Sivada	Diguva Sivada	Rowthulapudi
Diguvadarpalle	Kothuru	Rowthulapudi
Doparthi	Bavuruvaka	Prathipadu
East Lakshmipuram	East Lakshmipuram	Yeleswaram
Gajjanapudi	Gajjanapudi	Prathipadu
Gangavaram	Gangavaram	Rowthulapudi

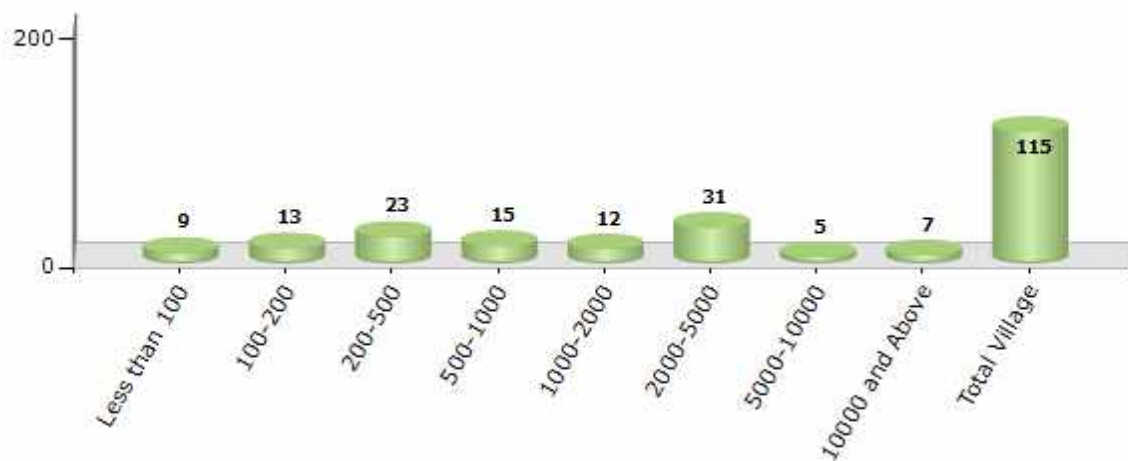
Contd....

Demographics

Number of Villages by Population Size - 2011

Less than 100	100-200	200-500	500-1000	1000-2000	2000-5000	5000-10000	10000 and Above	Total Village
9	13	23	15	12	31	5	7	115

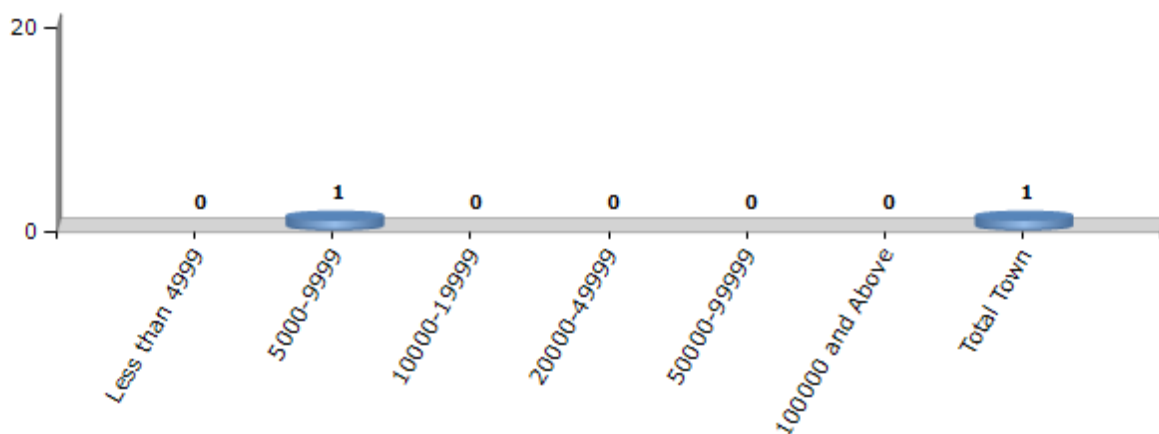
Number of Villages by Population Size - 2011



Number of Towns by Population Size - 2011

Less than 4999	5000-9999	10000-19999	20000-49999	50000-99999	100000 and Above	Total Town
0	1	0	0	0	0	1

Number of Towns by Population Size - 2011

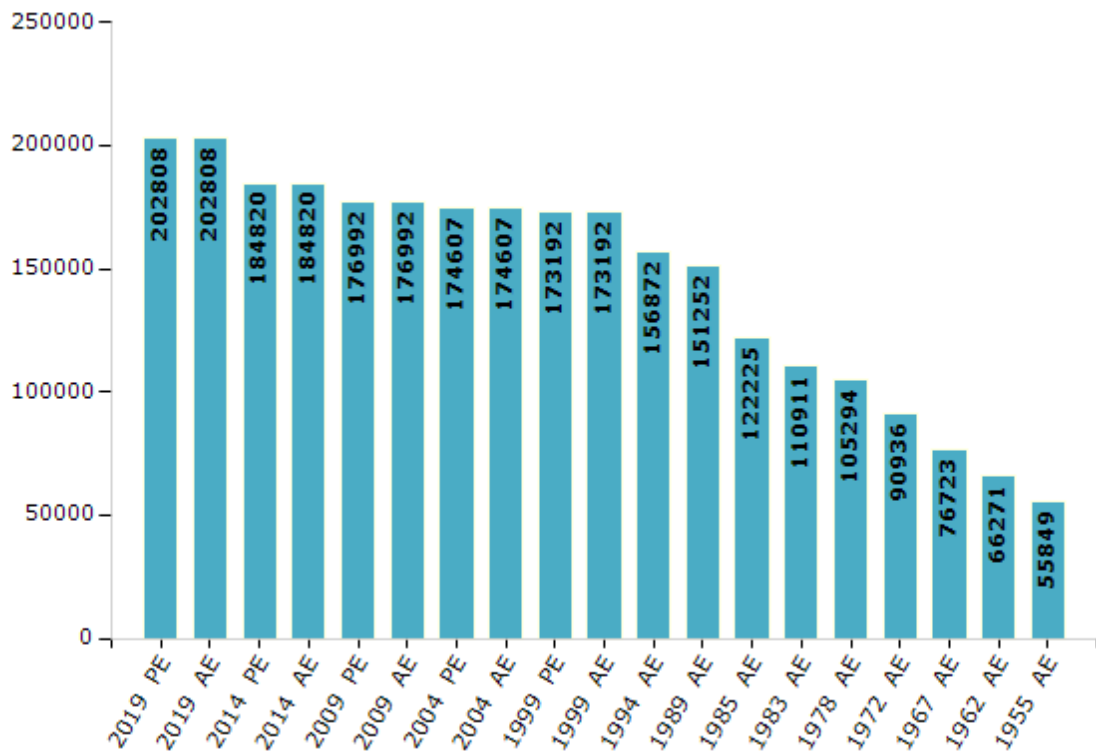


Electoral Features

Electors by Male & Female

Year	Male	Female	Others	Total	Year	Male	Female	Others	Total
2019 PE	100735	102059	14	202808	1994 AE	77869	79003	-	156872
2019 AE	100735	102059	14	202808	1989 AE	75159	76093	-	151252
2014 PE	91895	92910	15	184820	1985 AE	60192	62033	-	122225
2014 AE	91895	92910	15	184820	1983 AE	54103	56808	-	110911
2009 PE	86670	90322	-	176992	1978 AE	51440	53854	-	105294
2009 AE	86670	90322	-	176992	1972 AE	44323	46613	-	90936
2004 PE	85801	88806	-	174607	1967 AE	-	-	-	76723
2004 AE	85801	88806	-	174607	1962 AE	-	-	-	66271
1999 PE	85623	87569	-	173192	1957 AE	-	-	-	-
1999 AE	85623	87569	-	173192	1955 AE	-	-	-	55849

Number of Electors

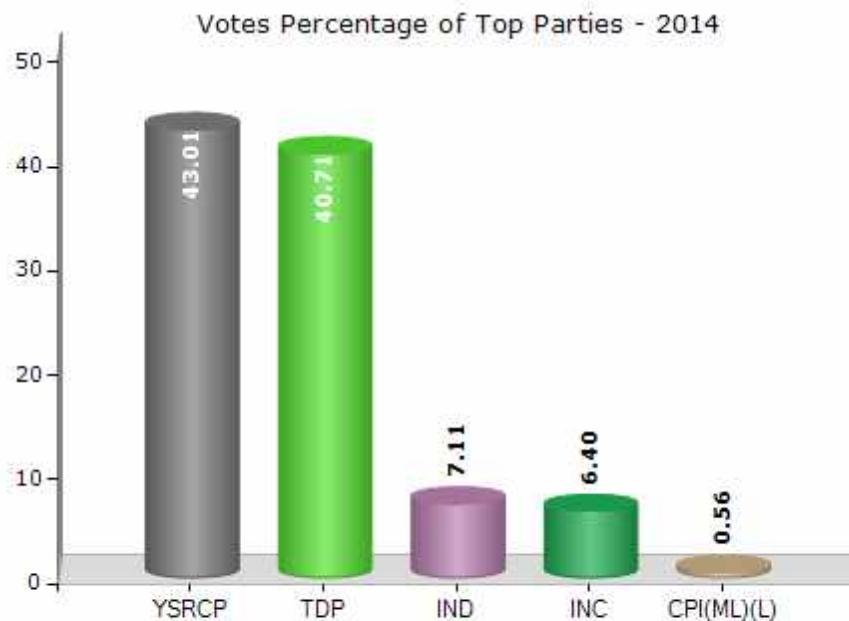


Note : AE : Assembly Election, PE : Assembly Segment of Parliamentary Election

Historical Summary Election Results

Summary Result of Assembly Election - 2014

Candidate Name	Party	Votes	Votes %
Varupula Subbarao	YSRCP	63693	43.01
Parvatha Sri Satyanarayanamurthy	TDP	60280	40.71
Mudragada Padmanabham	IND	10529	7.11
Parvatha Sri Purnachandra Prasadu	INC	9477	6.4
Rechukatla Simhachalam	CPI(ML)(L)	833	0.56
Pathivada Srinivasarao	PPOI	678	0.46
Paparao Bandili	IND	413	0.28
Adhikaribabu Mohmmad	AAP	406	0.27
Vaybogula Subbarao	IND	349	0.24
Yallapu Lakshmanarao	JaSPa	343	0.23
Bandili Buli Apparao	IND	283	0.19
	NOTA	791	0.53



Polling Station Level Election Results

Number and Name of Polling Stations (PS) (2019 AE)

Number of Polling Stations	Name of Polling Stations	Number of Polling Stations	Name of Polling Stations
1	Mandal Praja Parishad Upper Primary School, Marriveedu	22	Nagara Panchayat Office, South Eastern Side Meeting Hall, Yeleswaram
2	Mandal Praja Parishad Upper Primary School, Marriveedu	23	Administrative Hall, Nagar Panchayat Office, Yeleswaram
3	Mandal Praja Parishad Upper Primary Elementary School New Building - Parimitadak	24	Govt. Jr. College Addl. New Building South Eastern Side Room, Yeleswaram
4	Mandal Praja Parishad Upper Primary School, South New Building, Middle Room, J. Annavaram	25	Mandal Praja Parishad Elementary School, Northern Wing, Ambedkar Nagar, Yeleswaram
5	Mandal Praja Parishad Upper Primary School, New Building, J. Annavaram	26	Mandal Praja Parishad Elementary School, Southern Side Building, A.B. Nagar, Yeleswaram
6	Mandal Praja Parishad Upper Primary School, New Building, J. Annavaram	27	Mandal Praja Parishad Upper Primary School, Main Building, C. Rayavaram
7	Gram Panchayati Office, J. Annavaram	28	Govt. Junior. College, Main Building, Zoology Lab, Yeleswaram
8	Mandal Praja Parishad Upper Primary School, Wester Block South Side Room, East Lakshampuram	29	Govt. Junior. College, Botony Lab, Yeleswaram Govt. Jr. College, Botony Lab
9	Mandal Praja Parishad Upper Primary School, Wester Block North Side Room, East Lakshampuram	30	Govt. Junior. College, Main Building, South Side Room, Yeleswaram
10	Mandal Praja Parishad Elementary School, New R.C.C. Building, Ramanayyapeta	31	Mandal Praja Model Primary School, West Side South Side Room, Chaitanya Nagar, Yeleswaram
11	Zilla Praja Parishad Girls High School, North Side Building, 1st Room From West, Yeleswaram	32	Mandal Praja Model Primary School, West Side South Side Room, Chaitanya Nagar, Yeleswaram
12	Mandal Mahila Samaikhya Building, Shirdinagar, Yeleswaram	33	Govt. Jr. College, Old Building, Southern room, Yeleswaram Govt. Jr. College, Old Building, Southern room
13	Mandal Praja Parishad Elementary School (Main) Main Building South West Room, Yeleswaram	34	Mandal Praja Parishad Model Primary School, Southern Side Building, North Room, Lingamparthi.
14	Zilla Praja Parishad Girls High School, North Side Building, 3rd Room From West, Yeleswaram	35	Zilla Praja Parishad High School, Southern Side Building, West Side 1st Room, Lingamparthi.
15	Mandal Praja Parishad Elementary School (Main) Building - South West 2nd Room, Yeleswaram.	36	Zilla Praja Parishad High School, Southern Side Building, West Side Second Room, Lingamparthi
16	Zilla Praja Parishad Girls High School, North Building East Side Room, Yeleswaram.	37	Mandal Praja Parishad Model Elementary School, Main Building, Northern Side Room, Lingamparthi.
17	Mandal Praja Parishad Primary School, Main Building North Side Room, Yrp Colony, Yeleswaram	38	Mandal Praja Parishad Model Elementary School, Northern Side New Building, Lingamparthi.
18	Mandal Praja Parishad Primary School, Main Building South Side Room, Yrp Colony, Yeleswaram	39	Zilla Praja Parishad High School South Side Building Second Room From East Lingamparthi
19	Mandal Praja Parishad Primary School, South Side East Building, Yrp Colony, Yeleswaram	40	Mandal Praja Parishad Elementary Special School Northern Side, Adianhra Peta, Lingamparthi
20	Mandal Praja Parishad Primary School, South Side West Building, Yrp Colony, Yeleswaram	41	Mandal Praja Parishad Special. Elementary School, Southern Side Adianhra Peta, Lingamparthi
21	Mandal Praja Parishad Elementary School, South Side East Side Building, Yeleswaram	42	Mandal Praja Parishad Model Elementary School, Eastern Part, Bhadravaram

Contd....

Polling Station Level Election Results

Polling Station-wise Votes Secured by Overall Top Five Parties in Prathipadu Assembly in Assembly Election (AE) under Kakinada Parliamentary Constituency in Andhra Pradesh (2019)

Number of Polling Station	Winner - Sri Purnachandra Prasad Parvatha (YSRCP)	Runner-up - Varupula Raja (TDP)	3rd - Varupula Tammayyababu (JnP)	4th - Ummidi Venkatrao (INC)	5th - Chilukuri Ram Kumar (BJP)	NOTA	Other	Total Votes Secured
36	410	274	200	14	1	8	5	912
37	264	273	127	10	5	5	3	687
38	280	250	104	14	3	7	5	663
39	261	349	64	16	5	2	17	714
40	480	291	109	15	6	1	8	910
41	475	373	31	11	6	7	14	917
42	335	236	77	16	2	3	5	674
43	447	388	69	16	4	15	5	944
44	135	491	22	7	2	1	0	658
45	272	302	50	6	1	8	6	645
46	242	501	51	21	5	2	7	829
47	530	248	46	10	4	3	5	846
48	384	250	31	12	3	19	3	702
49	432	211	76	19	10	4	5	757
50	321	222	28	6	0	7	2	586
51	256	208	14	22	3	3	2	508
52	428	492	33	21	2	12	10	998
53	230	314	24	6	1	2	3	580
54	230	319	25	7	1	2	6	590
55	299	321	51	12	4	7	14	708
56	367	273	45	17	4	10	5	721
57	481	380	65	20	8	14	6	974
58	435	432	86	25	6	17	10	1011
59	391	232	25	5	12	3	3	671
60	276	313	41	25	4	7	7	673
61	365	336	35	13	6	6	5	766
62	465	245	27	15	6	5	7	770
63	135	214	21	12	6	3	2	393
64	563	324	37	20	7	12	17	980
65	558	301	54	16	5	6	6	946
66	127	91	1	1	1	1	1	223
67	233	381	32	12	12	5	4	679
68	289	279	8	8	5	20	4	613
69	332	268	11	8	3	8	8	638
70	360	480	30	24	9	2	9	914

Contd....

Polling Station Level Election Results

Winner, Runner-up and 3rd Party Position & Winning Margin According to Polling Stations in Prathipadu Assembly in Assembly Election (AE) under Kakinada Parliamentary Constituency in Andhra Pradesh (2019)

Polling Station Number	Winner Party	Winner Votes (%)	Runner-up Party	Runner-up Votes (%)	Winning Margin Votes (%)	Third Party	Third Party Votes (%)	Other Votes (%)
75	TDP	353 (48.36)	YSRCP	327 (44.79)	26 (3.57)	JnP	22 (3.01)	28 (3.84)
76	YSRCP	436 (50.52)	TDP	361 (41.83)	75 (8.69)	INC	37 (4.29)	29 (3.36)
77	TDP	261 (54.15)	YSRCP	166 (34.44)	95 (19.71)	INC	20 (4.15)	35 (7.26)
78	TDP	282 (56.4)	YSRCP	153 (30.6)	129 (25.8)	INC	20 (4)	45 (9)
79	TDP	332 (62.17)	YSRCP	121 (22.66)	211 (39.51)	INC	30 (5.62)	51 (9.55)
80	YSRCP	354 (47.45)	TDP	335 (44.91)	19 (2.54)	JnP	19 (2.55)	38 (5.09)
81	YSRCP	353 (48.09)	TDP	242 (32.97)	111 (15.12)	JnP	103 (14.03)	36 (4.9)
82	YSRCP	316 (54.67)	TDP	181 (31.31)	135 (23.36)	JnP	54 (9.34)	27 (4.67)
83	TDP	452 (49.62)	YSRCP	391 (42.92)	61 (6.7)	JnP	24 (2.63)	44 (4.83)
84	YSRCP	283 (54.84)	TDP	172 (33.33)	111 (21.51)	JnP	49 (9.5)	12 (2.33)
85	TDP	340 (54.75)	YSRCP	196 (31.56)	144 (23.19)	JnP	57 (9.18)	28 (4.51)
86	TDP	476 (57.77)	YSRCP	303 (36.77)	173 (21)	INC	23 (2.79)	22 (2.67)
87	TDP	362 (45.76)	YSRCP	346 (43.74)	16 (2.02)	JnP	48 (6.07)	35 (4.42)
88	TDP	436 (51.17)	YSRCP	341 (40.02)	95 (11.15)	JnP	34 (3.99)	41 (4.81)
89	TDP	397 (51.56)	YSRCP	300 (38.96)	97 (12.6)	JnP	45 (5.84)	28 (3.64)
90	TDP	212 (64.05)	YSRCP	97 (29.31)	115 (34.74)	JnP	15 (4.53)	7 (2.11)
91	TDP	444 (54.15)	YSRCP	306 (37.32)	138 (16.83)	JnP	40 (4.88)	30 (3.66)
92	TDP	514 (60.47)	YSRCP	285 (33.53)	229 (26.94)	JnP	22 (2.59)	29 (3.41)
93	TDP	379 (53.31)	YSRCP	285 (40.08)	94 (13.23)	JnP	12 (1.69)	35 (4.92)
94	TDP	505 (58.05)	YSRCP	328 (37.7)	177 (20.35)	INC	15 (1.72)	22 (2.53)
95	TDP	426 (50.06)	YSRCP	365 (42.89)	61 (7.17)	JnP	32 (3.76)	28 (3.29)
96	TDP	394 (48.05)	YSRCP	311 (37.93)	83 (10.12)	JnP	71 (8.66)	44 (5.37)
97	TDP	430 (51.62)	YSRCP	338 (40.58)	92 (11.04)	JnP	40 (4.8)	25 (3)
98	YSRCP	401 (48.72)	TDP	342 (41.56)	59 (7.16)	JnP	49 (5.95)	31 (3.77)
99	YSRCP	322 (46.53)	TDP	275 (39.74)	47 (6.79)	JnP	50 (7.23)	45 (6.5)
100	YSRCP	344 (46.17)	TDP	278 (37.32)	66 (8.85)	JnP	76 (10.2)	47 (6.31)
101	YSRCP	372 (51.24)	TDP	275 (37.88)	97 (13.36)	JnP	44 (6.06)	35 (4.82)
102	TDP	383 (48.06)	YSRCP	334 (41.91)	49 (6.15)	JnP	46 (5.77)	34 (4.27)
103	YSRCP	403 (45.33)	TDP	397 (44.66)	6 (0.67)	JnP	56 (6.3)	33 (3.71)
104	TDP	312 (64.33)	YSRCP	126 (25.98)	186 (38.35)	CPI(ML)(L)	16 (3.3)	31 (6.39)
105	YSRCP	432 (51.67)	TDP	344 (41.15)	88 (10.52)	INC	21 (2.51)	39 (4.67)
106	TDP	346 (47.2)	YSRCP	330 (45.02)	16 (2.18)	INC	19 (2.59)	38 (5.18)
107	YSRCP	279 (47.29)	TDP	273 (46.27)	6 (1.02)	JnP	11 (1.86)	27 (4.58)
108	YSRCP	533 (60.16)	TDP	265 (29.91)	268 (30.25)	CPI(ML)(L)	24 (2.71)	64 (7.22)
109	YSRCP	461 (49.73)	TDP	392 (42.29)	69 (7.44)	JnP	20 (2.16)	54 (5.83)
110	YSRCP	399 (52.23)	TDP	315 (41.23)	84 (11)	JnP	16 (2.09)	34 (4.45)
111	TDP	372 (45.98)	YSRCP	366 (45.24)	6 (0.74)	JnP	29 (3.58)	42 (5.19)

Contd....

Socio-Economic Amenities - Rural

Access to Education Facilities

Particulars	Number of Villages (% of Population)				
	Available	Not Available	If Not Available (Distance of Nearest Facility)		
			A	B	C
Govt. Primary School	107 (100)	8 (0)	3 (0)	5 (0)	0 (0)
Private Primary School	14 (43)	101 (57)	0 (0)	0 (0)	0 (0)
Govt. Middle School	45 (81)	70 (19)	34 (11)	29 (7)	5 (0)
Private Middle School	10 (39)	105 (61)	0 (0)	1 (0)	0 (0)
Govt. Secondary School	20 (55)	95 (45)	35 (23)	39 (19)	18 (2)
Private Secondary School	7 (34)	108 (66)	0 (0)	3 (1)	0 (0)
Govt. Senior Secondary School	7 (27)	108 (73)	5 (7)	7 (9)	38 (21)
Private Senior Secondary School	6 (28)	109 (72)	1 (2)	11 (13)	43 (13)
Govt. Arts and Science Degree College	1 (12)	114 (88)	2 (5)	7 (10)	40 (24)
Private Arts and Science Degree College	2 (7)	113 (93)	1 (4)	6 (12)	56 (26)
Govt. Engineering College	0 (0)	115 (100)	0 (0)	0 (0)	2 (1)
Private Engineering College	0 (0)	115 (100)	0 (0)	3 (5)	110 (94)
Govt. Medicine College	0 (0)	115 (100)	0 (0)	0 (0)	86 (80)
Private Medicine College	0 (0)	115 (100)	0 (0)	0 (0)	29 (20)
Govt. Management Institute	0 (0)	115 (100)	0 (0)	0 (0)	19 (15)
Private Management Institute	0 (0)	115 (100)	0 (0)	0 (0)	96 (85)
Govt. Polytechnic	0 (0)	115 (100)	0 (0)	0 (0)	49 (60)
Private Polytechnic	0 (0)	115 (100)	0 (0)	2 (0)	64 (40)
Govt. Vocational Training School/ITI	0 (0)	115 (100)	0 (0)	2 (0)	31 (20)
Private Vocational Training School/ITI	1 (4)	114 (96)	1 (4)	5 (9)	75 (62)
Govt. Non Formal Training Centre	0 (0)	115 (100)	0 (0)	0 (0)	115 (100)
Private Non Formal Training Centre	0 (0)	115 (100)	0 (0)	0 (0)	0 (0)
Govt. School For Disabled	0 (0)	115 (100)	0 (0)	0 (0)	115 (100)
Private School For Disabled	0 (0)	115 (100)	0 (0)	0 (0)	0 (0)
Government Others	0 (0)	115 (100)	0 (0)	0 (0)	0 (0)
Private Others	0 (0)	115 (100)	0 (0)	0 (0)	0 (0)

Note : Distance A : Less than 5 km; B : Between 5-10 km; C : 10+ km.; Source : Data Analysis is based on 2011 Census.

DISCLAIMER

The Terms of Use and Disclaimer of Datanet India Private Limited (hereinafter referred to as "Datanet") for use of this analysis report of **Prathipadu Assembly Constituency (Prathipadu Vidhan Sabha)** :-

1. **Assembly Factbook™** is a Registered Trade Mark owned by Datanet.
2. All the maps are sketched and graphical representation only and have not been drawn to the scale and also not to represent the actual geographical area or boundary of the unit.
3. The data for the aforesaid analysis is based on authentic sources and has been culled from the various publications of Census, CSO and NSSO for district and block level data, various central and state government departments, Central & State Elections Commissions and the concerned Returning Officers' releases, Electoral Rolls, Election results and allied publications, internal assessment, surveys, estimates and analysis. Therefore, certain adjustment of data at micro level may have been done to arrive closer to the macro data.
4. Data have been provided on an "As Is" and "As AVAILABLE" basis
5. The colours shown in the maps or diagram and charts of a particular party, alliance or AC are indicative and do not represent them.
6. This publication which includes maps, sheets, graphs and data would be the property under copyright of Datanet only. The user may use these for its internal study, analysis and research purposes. It's public display, re-selling or any commercial uses by the user are not allowed.
7. Datanet has taken due care and caution in compilation and processing of data and allied information, but does not guarantee the accuracy, adequacy or completeness of any information/analysis and will be not responsible for any errors or omissions or for the results obtained from the use of such information/analysis.
8. All the contents for the publication have been culled from various authentic sources and Datanet reasonably believes such sources to be reliable, but does not make any representations, express or implied as to the accuracy or fitness of use of such information. The information or contents of the information/analysis do not constitute advice and should not be relied upon in making (or refraining from making) any decision. Any reliance placed upon the information provided by Datanet is the sole responsibility and strictly at the user's risk.
9. In no event will Datanet be liable for any damages (including, without limitation, damages for loss of business projects, or loss of profits) arising in contract, tort or otherwise from the use of or inability to use any of its contents, or from any action taken (or refrained from being taken) as a result of using the analysis or any of its contents. Datanet its directors, owners, editors, officials, employees, distributor and agents or any associate will not be liable for any errors in the information contained or any consequences arising from the use of the contents of the provided information/analysis.
10. If any provision of these terms and conditions is held invalid or illegal or unenforceable for any reason by any court of competent jurisdiction, such provision shall be severed and the remainder of provisions of the terms and conditions shall continue in full force and effect as if the Term of Use had been executed with the invalid, illegal or unenforceable provision eliminated.
11. If there are any discrepancies in the information provided, please bring it to attention of Datanet for suitable rectification measures.

Buy Online This Complete Book At
Datanet India eBooks Store

www.indiastatpublications.com

or go directly at

[http://www.indiastatpublications.com/
Assembly_factbook/Andhra_Pradesh/Kakinada/Prathipadu](http://www.indiastatpublications.com/Assembly_factbook/Andhra_Pradesh/Kakinada/Prathipadu)

 **india**stat**elections**

ISBN : 978-93-87415-97-3



9 789387 415973