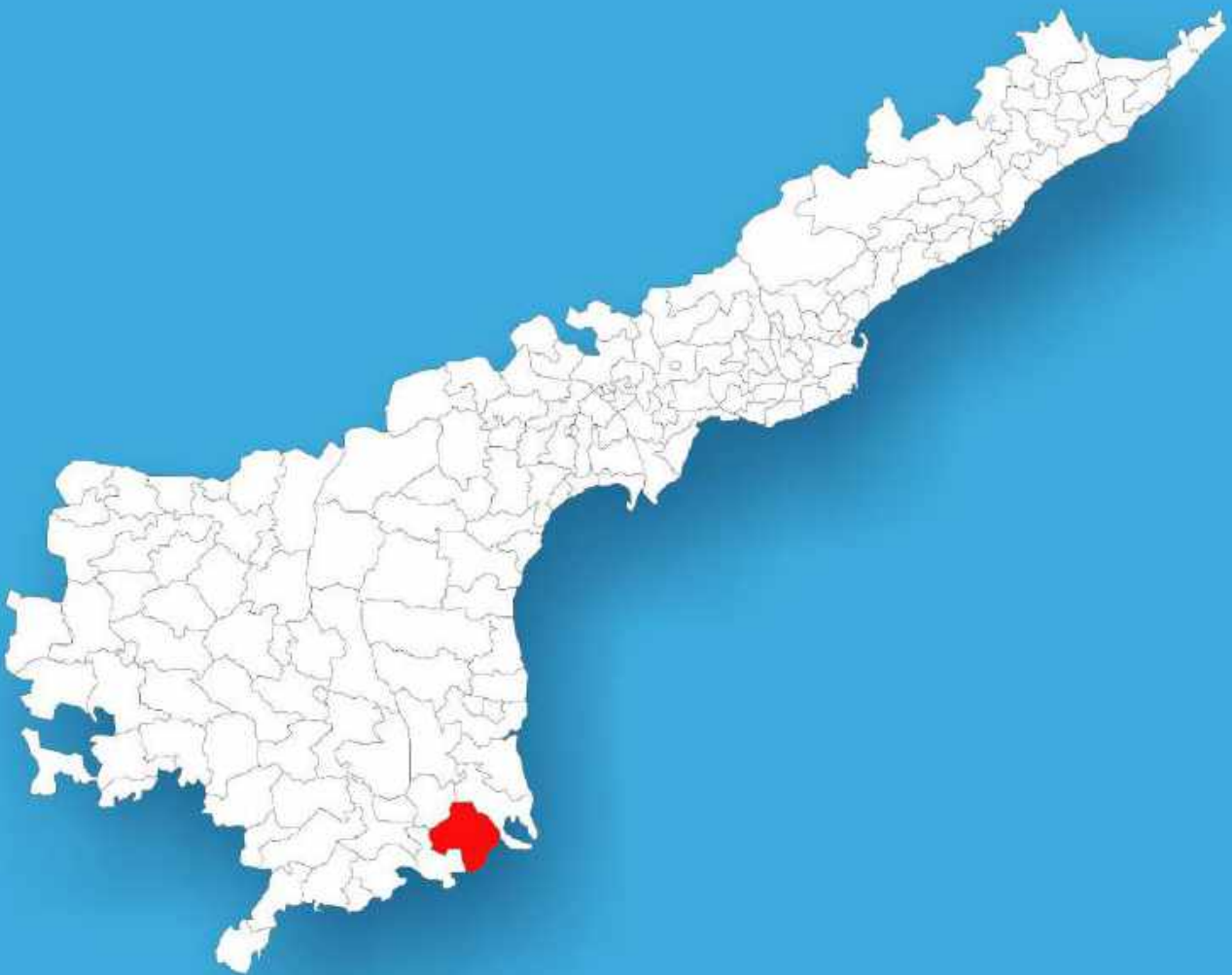




Andhra Pradesh

Assembly Factbook™

Satyavedu Assembly Constituency



Key Electoral Data of Satyavedu
Assembly Constituency (Vidhan Sabha)

Andhra Pradesh
Assembly FactbookTM
Satyavedu Assembly Constituency



Satyavedu Vidhan Sabha

Editor & Director

Dr. R.K. Thukral

Research Editor

Dr. Shafeeq Rahman

Compiled, Researched and Published by Datanet India Pvt. Ltd.

D-100, 1st Floor,

Okhla Industrial Area, Phase-I,
New Delhi- 110020.

Ph.: 91-11- 43580781-84

Email : support@indiastatpublications.com

Website : www.indiastatelections.com

Online Book Store :

www.indiastatpublications.com

Report No. : AFB/AP-169-0125

ISBN : 978-93-5293-016-6

First Edition : January, 2018

Eighth Updated Edition : January, 2025

Price : Rs. 11500/-

US\$ 310

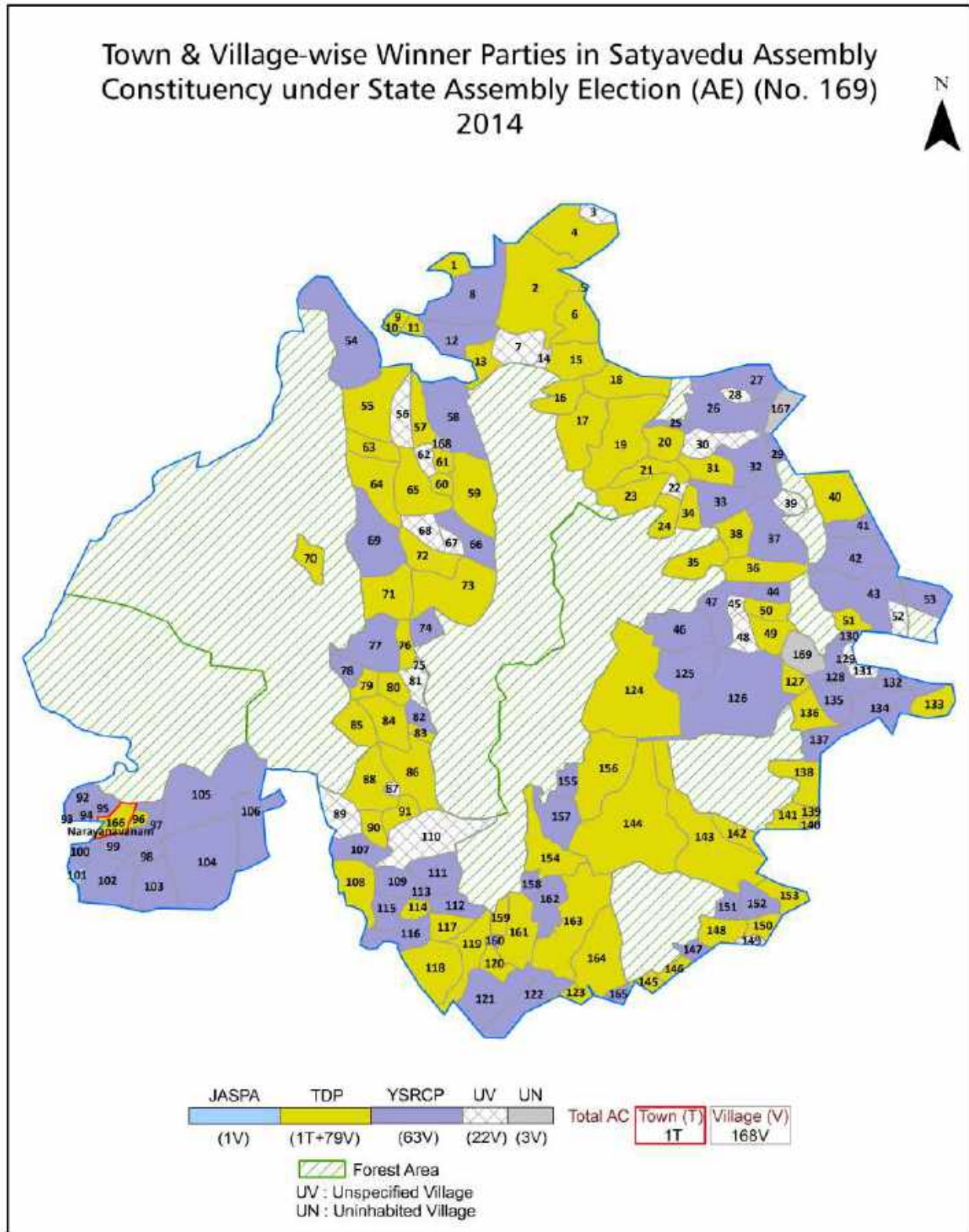
© Datanet India Pvt. Ltd.

All rights reserved. No part of this book may be reproduced, stored in a retrieval system or transmitted in any form or by any means, mechanical photocopying, photographing, scanning, recording or otherwise without the prior written permission of the publisher. Please refer to Disclaimer at page no. 224 for the use of this publication.

Printed in India

No.	Particulars	Page No.
	Introduction	
1	Assembly Constituency - (Vidhan Sabha) at a Glance Features of Assembly as per Delimitation Commission of India (2008)	1-2
	Location and Political Maps	
2	Location Map Boundaries of Assembly Constituency - (Vidhan Sabha) in District Boundaries of Assembly Constituency under Parliamentary Constituency - (Lok Sabha) Town & Village-wise Winner Parties- 2024-PE, 2024-AE, 2019-PE, 2019-AE, 2014-PE, 2014-AE, 2009-PE and 2009-AE	3-11
	Administrative Setup (2011)	
3	District Sub-district Towns Villages Inhabited Villages Uninhabited Villages Village Panchayat Intermediate Panchayat	12-20
	Demographics (2011)	
4	Population Households Rural/Urban Population Towns and Villages by Population Size Sex Ratio (Total & 0-6 Years) Religious Population Social Population Literacy Rate	21-22
	Electoral Features	
5	Important Dates of Last Elections Held Electors by Gender Service Electors Voters Voters Turnout Polling Stations & Average Number of Electors per Polling Station Electors by Age Group Present Elected Representatives	23-28
	Historical Summary Election Results	
6	Vote Share of Major Parties Winning Margin (Number & Percentage Polarity of Parties Summary Result of Assembly Segment of Parliamentary Elections 2024, 2019, 2014, 2009, 2004 and 1999 Summary Result of Assembly Elections 2024, 2019, 2014, 2009, 2004, 1999, 1994, 1989, 1985, 1983, 1978, 1972, 1967 and 1962	29-50
	Polling Station Level Election Results	
7	Name and Number of Polling Station 2024-PE, 2024-AE, 2019-PE, 2019-AE, 2014-PE, 2014-AE, 2009-PE and 2009-AE Polling Station-wise Electoral, Voter & Voter Turnout 2024-PE, 2024-AE, 2019-PE, 2019-AE, 2014-PE, 2014-AE, 2009-PE and 2009-AE Polling Station wise Elections Results 2024-PE, 2024-AE, 2019-PE, 2019-AE, 2014-PE, 2014-AE, 2009-PE and 2009-AE	51-202
	Share of Assembly Constituency	
8	Share of Assembly Constituency - (Vidhan Sabha) in State, District and Parliamentary Constituency - (Lok Sabha)	203
	Socio-Economic Amenities (2011)	
9	Access to Administrative Units Agricultural, Manufacturing and Industrial Commodities Demographic Indicators Education Health & Manpower Drinking Water Supply Sanitation Entertainment and Recreations Infrastructure Power Food Allocation Distribution and Marketing of Agriculture Commodities Infrastructure Transport and Road Infrastructure Communication Banking and Financial Services Land Use Irrigation Source	205-219
10	Abbreviation & Sources	221-222
11	Disclaimer	224

Location & Political Map



Administrative Setup

List of Village Panchayat & Intermediate Panchayat (Block) Name - 2011

Village Name	Village Panchayat Name	Intermediate Panchayat Name
Adaram	Adaram & Kandluru	K.V.B.Puram
Adavaram	Adavaram	K.V.B.Puram
Alathur	Alathur, Govindappanaidu Khandriga & Pilletivari Khandriga	Buchinaidu Kandriga
Ambakam	Ambakam	Satyavedu
Ambur	Ambur	Varadaiahpalem
Angeri Cheruvu	Guntipedu	K.V.B.Puram
Anjuru	Anjuru	K.V.B.Puram
Appaiahpalem	Mallavaripalem	Satyavedu
Appambattu	Appambattu	Pichatur
Arai	Arai	K.V.B.Puram
Aranyam Khandriga	Aranyam Khandriga	Narayanavanam
Aroor	Aroor	Satyavedu
Arudur	Arudur & Kancharapalem	Varadaiahpalem
Ayyavaripalem	Ayyavaripalem	Varadaiahpalem
Baitakodiamedu	Baitakodiamedu & Nandanam	Nagalapuram
Bakkapatugunta	Rangaiahgunta	K.V.B.Puram
Beera Kuppam	Beera Kuppam	Nagalapuram
Bhavanisankarapuram	Alathur	Buchinaidu Kandriga
Bheemunicheruvu	Bheemunicheruvu & Brahmanathangal	Narayanavanam
Boppa Raju Palem	Boppa Raju Palem	Narayanavanam
Brahmana Cheruvu	Guntipedu	K.V.B.Puram
Brahmanapalle	Brahmanapalle	K.V.B.Puram
C.L Naidu Palle	C.L Naidu Palle & Indiranagar	Varadaiahpalem
Chedulapakam	Bathalavallam	Varadaiahpalem
Chellambapuram	Pallamala	Buchinaidu Kandriga
Chengambakam	Mallavaripalem	Satyavedu
Cherivi	Cherivi	Satyavedu
Chilamathur	Chilamathur & Mathermitta	Varadaiahpalem
Chilamathur @ Bangala	Chilamathur @ Bangala	Pichatur

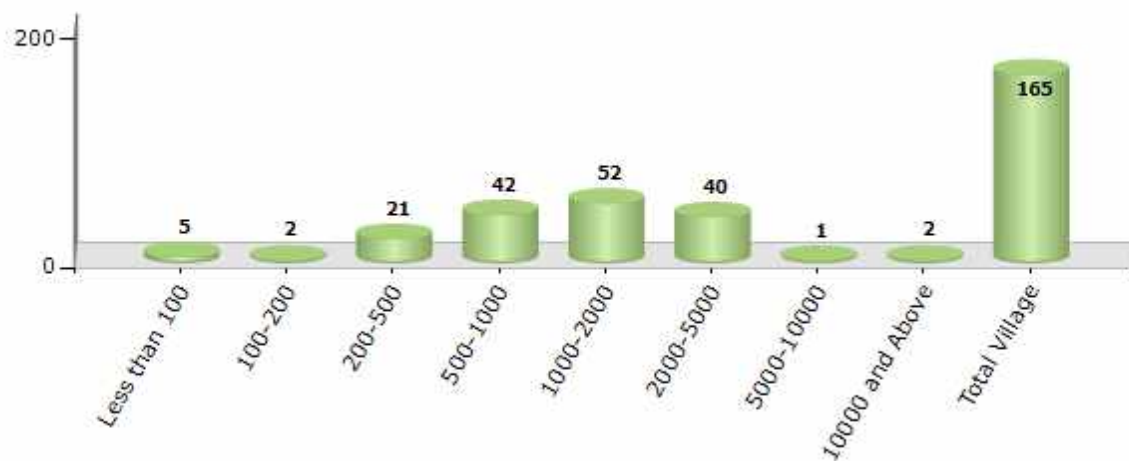
Contd....

Demographics

Number of Villages by Population Size - 2011

Less than 100	100-200	200-500	500-1000	1000-2000	2000-5000	5000-10000	10000 and Above	Total Village
5	2	21	42	52	40	1	2	165

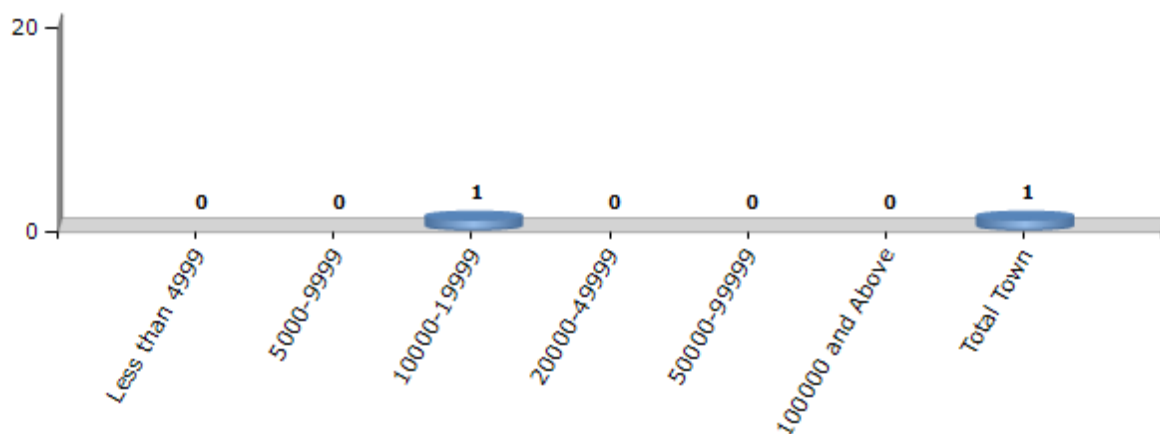
Number of Villages by Population Size - 2011



Number of Towns by Population Size - 2011

Less than 4999	5000-9999	10000-19999	20000-49999	50000-99999	100000 and Above	Total Town
0	0	1	0	0	0	1

Number of Towns by Population Size - 2011

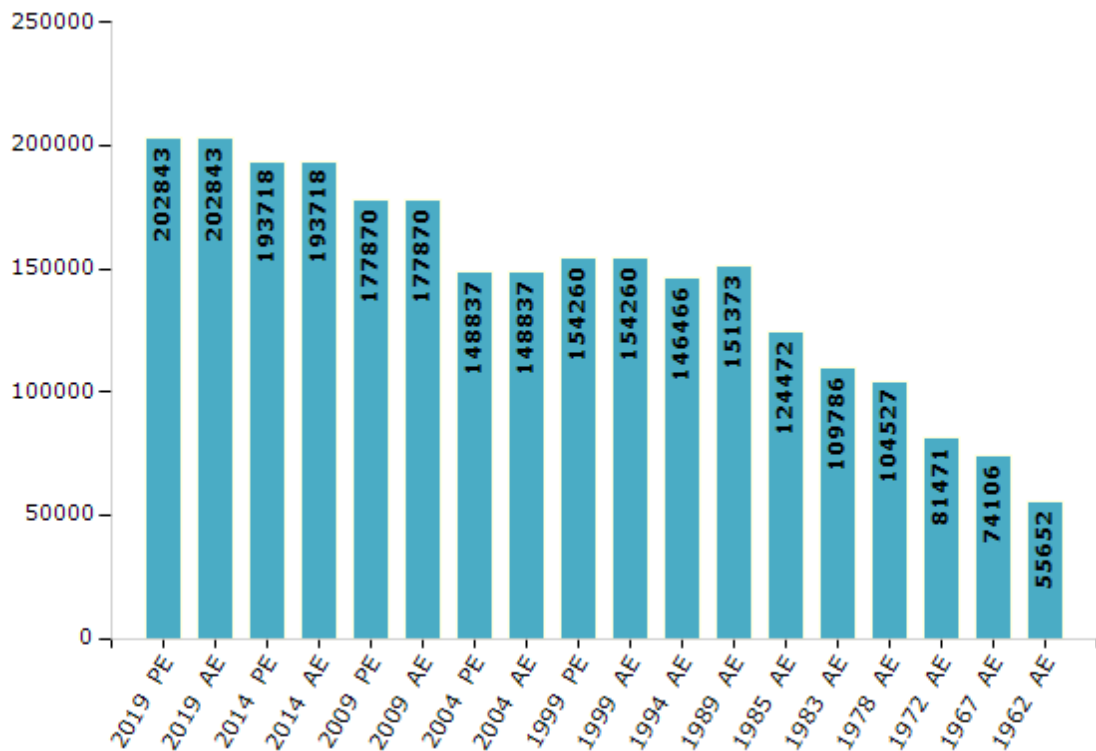


Electoral Features

Electors by Male & Female

Year	Male	Female	Others	Total	Year	Male	Female	Others	Total
2019 PE	99417	103409	17	202843	1994 AE	71674	74792	-	146466
2019 AE	99417	103409	17	202843	1989 AE	74321	77052	-	151373
2014 PE	94694	99011	13	193718	1985 AE	61365	63107	-	124472
2014 AE	94694	99011	13	193718	1983 AE	53803	55983	-	109786
2009 PE	86406	91464	-	177870	1978 AE	51615	52912	-	104527
2009 AE	86406	91464	-	177870	1972 AE	40666	40805	-	81471
2004 PE	72223	76614	-	148837	1967 AE	-	-	-	74106
2004 AE	72223	76614	-	148837	1962 AE	-	-	-	55652
1999 PE	74864	79396	-	154260	1957 AE	-	-	-	-
1999 AE	74864	79396	-	154260	1955 AE	-	-	-	-

Number of Electors

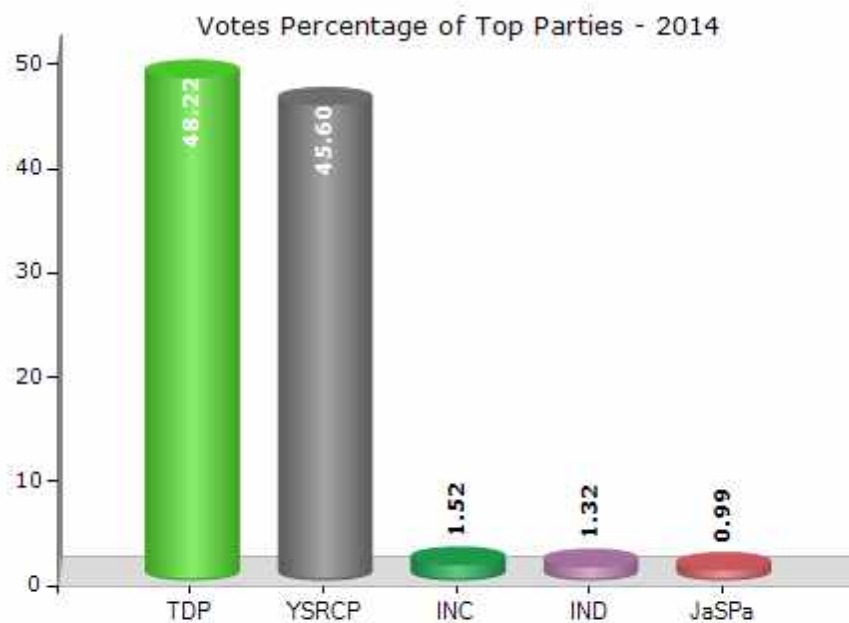


Note : AE : Assembly Election, PE : Assembly Segment of Parliamentary Election

Historical Summary Election Results

Summary Result of Assembly Election - 2014

Candidate Name	Party	Votes	Votes %
Talari Aditya	TDP	77655	48.22
K.Adimulam	YSRCP	73428	45.6
Penubala. Chandra Sekhar	INC	2451	1.52
Rajasekhar Jemma	IND	2125	1.32
T.Doraswamy	JaSPa	1599	0.99
K.Madhu Babu	BSP	963	0.6
Ponneri Manikyam	IND	503	0.31
Vetti.Chengaiah	AAP	334	0.21
Jadda Balaji	IND	326	0.2
B. Baranibas	IND	289	0.18
P.Harshavardhan	IND	258	0.16
P.Penchalaiah	IND	214	0.13
	NOTA	891	0.55



Polling Station Level Election Results

Number and Name of Polling Stations (PS) (2019 AE)

Number of Polling Stations	Name of Polling Stations	Number of Polling Stations	Name of Polling Stations
1	Mandal Parishad Primary School, Thimmabhupalapuram Timmabhupalapuram	22	Mandal Parishad Primary School, Kanamanambedu Kanamanam Bedu
2	Zilla Parishad High School, Tamil School, Chellamambapuram	23	M.P.P. School, 3, 4, 5th Class Room, Gajulapelluru
3	Mandal Parishad Primary School, Parlapalle Parlapalli	24	M.P.P. School, South Side 3& 4 Class Room New Building, Gajulapelluru
4	Mandal Parishad Primary School, Pallamalakandriga H/O Pallamala Pallamala Kandriga	25	Mandal Parishad Primary School, Neerpakota
5	Mandal Parishad Primary School, Pallamala	26	Mandal Parishad Primary School, Micro Wave Centre, Neerpakota Y.C. H/O Neerpakota Neerpakota Yanadi Colony
6	Mandal Parishad Primary School, Kothapalem	27	Mandal Parishad Primary School, Kampalem Kampallam
7	Mandal Parishad Upper Primary School, 1, 2, 3 Class Room, Katuru	28	Mandal Parishad Primary School, New Building, Kukkambakam Kukkambakkam
8	Mandal Parishad Upper Primary School, 6Th, 7th Rooms, Katuru	29	Mandal Parishad Upper Primary School, South, Kanchana Putthuru Kanchanputturu
9	Mandal Parishad Upper Primary School, Alathur Alathuru	30	Mandal Parishad Upper Primary School, South, West Varatthur. West Varathuru
10	Mandal Parishad Primary School, Govindappa Naidu Kandriga	31	Mandal Parishad Upper Primary School, West, West Varatthur. West Varathure
11	Gram Panchayat Office Building, Pilledivari Kandriga H/O Alathur Pilledivari Kandriga H/O Alathuru	32	Mandal Parishad Primary School, Venugopalapuram
12	Mandal Parishad Primary School, Bhavanisankarapuram Bhavani Sankara Puram	33	Zilla Parishad High School, Nelavai. Nelavoy
13	Mandal Parishad Primary School, Putteri Putheri	34	Mandal Parishad Primary School, Kallivettu Kalivettu
14	Mandal Parishad Primary School, .East, Peddapalavedu Peddapallavedu	35	Mandal Parishad Primary School, East, Talarivettu Harijanawada
15	Mandal Parishad Primary School, R-Anthapuram R-Ananthapuram	36	Mandal Parishad Primary School, Kuvvakolli Kuvvakulli
16	Mandal Parishad Primary School, Chinnaihgunta Chinnagunta	37	Mandal Parishad Primary School, North, Santhaveluru Santhavellore
17	Mandal Parishad Primary School, East, Vedalasrinivas Puram Vedala Srinivasapuram	38	Mandal Parishad Primary School South, Santavelluru Santhavellore
18	Mandal Parishad Primary School, Arigila Kandriga Arigala Kandriga	39	Mandal Parishad Primary School, Ayyavaripalem Ayya Vaari Palem
19	Zilla Parishad High School, Computer Class Room, B N Kandriga Bucchinaidu Kandriga	40	Zilla Parishad High School, Santhavelluru Santhavellore
20	Zilla Parishad High School, 10th Class B Section Room, B N Kandriga Buchinaidu Kandriga	41	Mandal Parishad Primary School, Kalatthur Kalathuru
21	Zilla Parishad High School, 10th Class C Section Room, Bucchinaidu Kandriga	42	Mandal Parishad Primary School, Mavillapadu H/O Kalathru. Mavillapadu Mazara Kalathuru

Contd....

Polling Station Level Election Results

Polling Station-wise Votes Secured by Overall Top Five Parties in Satyavedu Assembly in Assembly Election (AE) under Tirupati Parliamentary Constituency in Andhra Pradesh (2019)

Number of Polling Station	Winner - Adimulam Koneti (YSRCP)	Runner-up - Jadda Rajasekhar (TDP)	3rd - Chandrasekhar Penubala (INC)	4th - N. Vijay Kumar (BSP)	5th - Venkataiah . S (BJP)	NOTA	Other	Total Votes Secured
36	636	187	17	6	3	21	12	882
37	316	249	7	3	3	9	7	594
38	663	162	18	4	4	17	10	878
39	296	116	10	3	3	5	6	439
40	707	114	7	9	4	6	3	850
41	423	117	10	11	4	21	6	592
42	518	166	18	4	1	19	4	730
43	338	229	11	3	4	6	3	594
44	413	143	17	15	6	11	9	614
45	482	266	14	14	3	11	5	795
46	540	150	10	4	2	10	8	724
47	356	141	9	7	3	4	4	524
48	612	266	10	10	7	8	4	917
49	311	287	11	9	5	4	8	635
50	250	271	3	7	9	16	16	572
51	403	204	15	14	1	2	8	647
52	221	73	5	3	0	9	10	321
53	378	114	12	3	5	3	10	525
54	344	138	6	6	8	13	3	518
55	367	105	2	5	2	19	7	507
56	278	47	2	8	2	14	6	357
57	372	252	13	7	3	4	5	656
58	395	114	13	5	6	25	7	565
59	280	253	19	12	1	7	4	576
60	288	279	13	15	2	7	4	608
61	434	144	18	4	3	4	6	613
62	244	202	10	11	2	5	1	475
63	298	337	17	8	9	10	4	683
64	173	173	11	6	6	1	4	374
65	240	136	9	9	7	11	4	416
66	266	88	7	8	1	9	4	383
67	483	153	8	4	0	3	3	654
68	266	231	19	2	6	11	4	539
69	281	83	10	4	1	2	1	382
70	500	257	36	11	9	24	10	847

Contd....

Polling Station Level Election Results

Winner, Runner-up and 3rd Party Position & Winning Margin According to Polling Stations in Satyavedu Assembly in Assembly Election (AE) under Tirupati Parliamentary Constituency in Andhra Pradesh (2019)

Polling Station Number	Winner Party	Winner Votes (%)	Runner-up Party	Runner-up Votes (%)	Winning Margin Votes (%)	Third Party	Third Party Votes (%)	Other Votes (%)
75	YSRCP	458 (64.6)	TDP	189 (26.66)	269 (37.94)	INC	14 (1.97)	48 (6.77)
76	TDP	434 (48.55)	YSRCP	423 (47.32)	11 (1.23)	INC	14 (1.57)	23 (2.57)
77	YSRCP	594 (61.49)	TDP	300 (31.06)	294 (30.43)	INC	29 (3)	43 (4.45)
78	YSRCP	483 (56.36)	TDP	306 (35.71)	177 (20.65)	BSP	19 (2.22)	49 (5.72)
79	YSRCP	169 (49.56)	TDP	140 (41.06)	29 (8.5)	INC	10 (2.93)	22 (6.45)
80	YSRCP	482 (64.1)	TDP	161 (21.41)	321 (42.69)	INC	24 (3.19)	85 (11.3)
81	YSRCP	318 (55.99)	TDP	143 (25.18)	175 (30.81)	INC	25 (4.4)	82 (14.44)
82	YSRCP	317 (54.94)	TDP	235 (40.73)	82 (14.21)	INC	6 (1.04)	19 (3.29)
83	YSRCP	372 (61.08)	TDP	214 (35.14)	158 (25.94)	INC	6 (0.99)	17 (2.79)
84	YSRCP	298 (58.89)	TDP	164 (32.41)	134 (26.48)	INC	6 (1.19)	38 (7.51)
85	YSRCP	384 (69.44)	TDP	126 (22.78)	258 (46.66)	INC	11 (1.99)	32 (5.79)
86	YSRCP	500 (58.14)	TDP	311 (36.16)	189 (21.98)	INC	19 (2.21)	30 (3.49)
87	YSRCP	500 (75.76)	TDP	133 (20.15)	367 (55.61)	INC	10 (1.52)	17 (2.58)
88	YSRCP	308 (67.99)	TDP	105 (23.18)	203 (44.81)	BSP	10 (2.21)	30 (6.62)
89	YSRCP	362 (61.67)	TDP	185 (31.52)	177 (30.15)	INC	12 (2.04)	28 (4.77)
90	YSRCP	267 (64.34)	TDP	91 (21.93)	176 (42.41)	INC	16 (3.86)	41 (9.88)
91	YSRCP	206 (58.36)	TDP	127 (35.98)	79 (22.38)	INC	11 (3.12)	9 (2.55)
92	YSRCP	403 (61.72)	TDP	181 (27.72)	222 (34)	INC	24 (3.68)	45 (6.89)
93	YSRCP	404 (61.77)	TDP	223 (34.1)	181 (27.67)	INC	8 (1.22)	19 (2.91)
94	YSRCP	541 (56.71)	TDP	348 (36.48)	193 (20.23)	INC	21 (2.2)	44 (4.61)
95	YSRCP	247 (53.93)	TDP	174 (37.99)	73 (15.94)	INC	8 (1.75)	29 (6.33)
96	YSRCP	308 (57.36)	TDP	180 (33.52)	128 (23.84)	INC	20 (3.72)	29 (5.4)
97	YSRCP	412 (68.67)	TDP	132 (22)	280 (46.67)	BJP	30 (5)	26 (4.33)
98	YSRCP	282 (66.67)	TDP	113 (26.71)	169 (39.96)	INC	7 (1.65)	21 (4.96)
99	YSRCP	514 (55.69)	TDP	347 (37.59)	167 (18.1)	INC	12 (1.3)	50 (5.42)
100	YSRCP	298 (56.12)	TDP	206 (38.79)	92 (17.33)	INC	9 (1.69)	18 (3.39)
101	YSRCP	340 (61.93)	TDP	170 (30.97)	170 (30.96)	INC	14 (2.55)	25 (4.55)
102	YSRCP	300 (48.54)	TDP	271 (43.85)	29 (4.69)	INC	11 (1.78)	36 (5.83)
103	YSRCP	452 (78.47)	TDP	94 (16.32)	358 (62.15)	BJP	8 (1.39)	22 (3.82)
104	YSRCP	279 (71.54)	TDP	79 (20.26)	200 (51.28)	INC	10 (2.56)	22 (5.64)
105	YSRCP	295 (64.98)	TDP	132 (29.07)	163 (35.91)	INC	6 (1.32)	21 (4.63)
106	YSRCP	480 (54.48)	TDP	360 (40.86)	120 (13.62)	INC	15 (1.7)	26 (2.95)
107	YSRCP	285 (53.57)	TDP	204 (38.35)	81 (15.22)	INC	18 (3.38)	25 (4.7)
108	YSRCP	718 (75.9)	TDP	170 (17.97)	548 (57.93)	BSP	10 (1.06)	48 (5.07)
109	YSRCP	475 (62.42)	TDP	244 (32.06)	231 (30.36)	BSP	9 (1.18)	33 (4.34)
110	YSRCP	302 (65.51)	TDP	128 (27.77)	174 (37.74)	BSP	14 (3.04)	17 (3.69)
111	YSRCP	213 (55.32)	TDP	141 (36.62)	72 (18.7)	BSP	7 (1.82)	24 (6.23)

Contd....

Socio-Economic Amenities - Rural

Access to Education Facilities

Particulars	Number of Villages (% of Population)				
	Available	Not Available	If Not Available (Distance of Nearest Facility)		
			A	B	C
Govt. Primary School	160 (100)	5 (0)	5 (0)	0 (0)	0 (0)
Private Primary School	8 (17)	157 (83)	0 (0)	0 (0)	0 (0)
Govt. Middle School	70 (66)	95 (34)	82 (29)	11 (4)	1 (0)
Private Middle School	7 (15)	158 (85)	0 (0)	0 (0)	0 (0)
Govt. Secondary School	40 (43)	125 (57)	89 (41)	31 (15)	5 (1)
Private Secondary School	6 (15)	159 (85)	0 (0)	0 (0)	0 (0)
Govt. Senior Secondary School	7 (16)	158 (84)	26 (16)	51 (27)	34 (20)
Private Senior Secondary School	2 (2)	163 (98)	10 (6)	13 (6)	23 (9)
Govt. Arts and Science Degree College	1 (4)	164 (96)	9 (6)	26 (13)	128 (77)
Private Arts and Science Degree College	1 (4)	164 (96)	1 (0)	0 (0)	0 (0)
Govt. Engineering College	0 (0)	165 (100)	0 (0)	0 (0)	0 (0)
Private Engineering College	1 (1)	164 (99)	9 (4)	10 (6)	145 (90)
Govt. Medicine College	0 (0)	165 (100)	0 (0)	0 (0)	165 (100)
Private Medicine College	0 (0)	165 (100)	0 (0)	0 (0)	0 (0)
Govt. Management Institute	0 (0)	165 (100)	0 (0)	0 (0)	0 (0)
Private Management Institute	0 (0)	165 (100)	8 (4)	9 (5)	148 (91)
Govt. Polytechnic	1 (4)	164 (96)	4 (3)	7 (4)	153 (89)
Private Polytechnic	0 (0)	165 (100)	0 (0)	0 (0)	0 (0)
Govt. Vocational Training School/ITI	0 (0)	165 (100)	11 (6)	12 (7)	92 (47)
Private Vocational Training School/ITI	1 (2)	164 (98)	7 (4)	10 (10)	32 (25)
Govt. Non Formal Training Centre	6 (15)	159 (85)	38 (22)	46 (27)	75 (37)
Private Non Formal Training Centre	0 (0)	165 (100)	0 (0)	0 (0)	0 (0)
Govt. School For Disabled	2 (1)	163 (99)	0 (0)	0 (0)	163 (99)
Private School For Disabled	0 (0)	165 (100)	0 (0)	0 (0)	0 (0)
Government Others	0 (0)	165 (100)	0 (0)	0 (0)	0 (0)
Private Others	0 (0)	165 (100)	0 (0)	0 (0)	0 (0)

Note : Distance A : Less than 5 km; B : Between 5-10 km; C : 10+ km.; Source : Data Analysis is based on 2011 Census.

DISCLAIMER

The Terms of Use and Disclaimer of Datanet India Private Limited (hereinafter referred to as "Datanet") for use of this analysis report of **Satyavedu Assembly Constituency (Satyavedu Vidhan Sabha)** :-

1. **Assembly Factbook™** is a Registered Trade Mark owned by Datanet.
2. All the maps are sketched and graphical representation only and have not been drawn to the scale and also not to represent the actual geographical area or boundary of the unit.
3. The data for the aforesaid analysis is based on authentic sources and has been culled from the various publications of Census, CSO and NSSO for district and block level data, various central and state government departments, Central & State Elections Commissions and the concerned Returning Officers' releases, Electoral Rolls, Election results and allied publications, internal assessment, surveys, estimates and analysis. Therefore, certain adjustment of data at micro level may have been done to arrive closer to the macro data.
4. Data have been provided on an "As Is" and "As AVAILABLE" basis
5. The colours shown in the maps or diagram and charts of a particular party, alliance or AC are indicative and do not represent them.
6. This publication which includes maps, sheets, graphs and data would be the property under copyright of Datanet only. The user may use these for its internal study, analysis and research purposes. It's public display, re-selling or any commercial uses by the user are not allowed.
7. Datanet has taken due care and caution in compilation and processing of data and allied information, but does not guarantee the accuracy, adequacy or completeness of any information/analysis and will be not responsible for any errors or omissions or for the results obtained from the use of such information/analysis.
8. All the contents for the publication have been culled from various authentic sources and Datanet reasonably believes such sources to be reliable, but does not make any representations, express or implied as to the accuracy or fitness of use of such information. The information or contents of the information/analysis do not constitute advice and should not be relied upon in making (or refraining from making) any decision. Any reliance placed upon the information provided by Datanet is the sole responsibility and strictly at the user's risk.
9. In no event will Datanet be liable for any damages (including, without limitation, damages for loss of business projects, or loss of profits) arising in contract, tort or otherwise from the use of or inability to use any of its contents, or from any action taken (or refrained from being taken) as a result of using the analysis or any of its contents. Datanet its directors, owners, editors, officials, employees, distributor and agents or any associate will not be liable for any errors in the information contained or any consequences arising from the use of the contents of the provided information/analysis.
10. If any provision of these terms and conditions is held invalid or illegal or unenforceable for any reason by any court of competent jurisdiction, such provision shall be severed and the remainder of provisions of the terms and conditions shall continue in full force and effect as if the Term of Use had been executed with the invalid, illegal or unenforceable provision eliminated.
11. If there are any discrepancies in the information provided, please bring it to attention of Datanet for suitable rectification measures.

Buy Online This Complete Book At
Datanet India eBooks Store

www.indiastatpublications.com

or go directly at

[http://www.indiastatpublications.com/
Assembly_factbook/Andhra_Pradesh/Tirupati/ Satyavedu](http://www.indiastatpublications.com/Assembly_factbook/Andhra_Pradesh/Tirupati/Satyavedu)

 **india**stat**elections**

ISBN : 978-93-5293-016-0



9 789352 930166