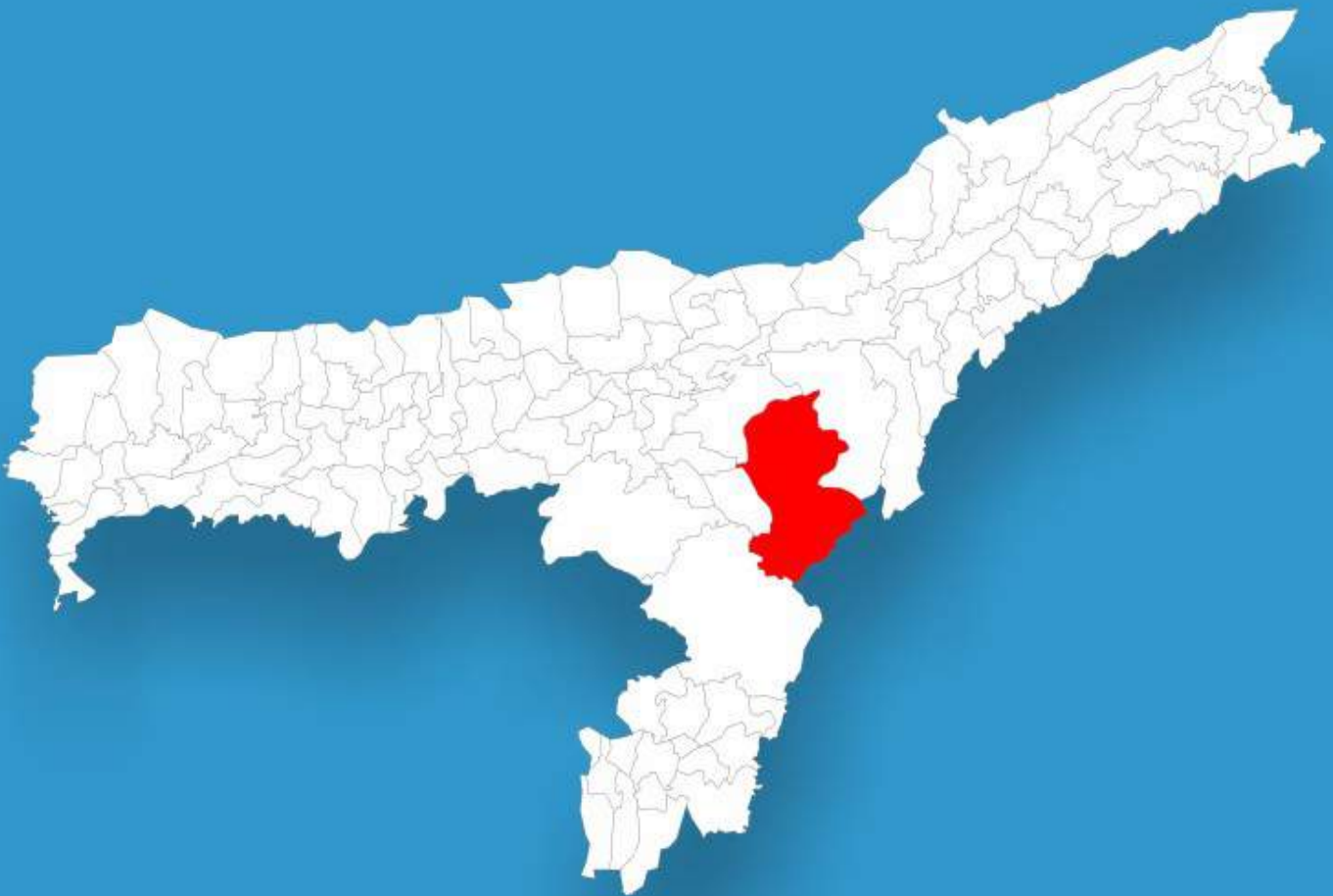




Assam

Assembly Factbook™

Diphu Assembly Constituency



Key Electoral Data of Diphu
Assembly Constituency (Vidhan Sabha)

Assam

Assembly Factbook™

Diphu Assembly Constituency



Diphu Vidhan Sabha

Editor & Director

Dr. R.K. Thukral

Research Editor

Dr. Shafeeq Rahman

Compiled, Researched and Published by Datanet India Pvt. Ltd.

D-100, 1st Floor,

Okhla Industrial Area, Phase-I,
New Delhi- 110020.

Ph.: 91-11- 43580781-84

Email : support@indiastatpublications.com

Website : www.indiastatelections.com

Online Book Store :

www.indiastatpublications.com

Report No. : AFB/AS-019-0123

ISBN : 978-93-5313-358-0

First Edition : January, 2018

Sixth Updated Edition : January, 2023

Price : Rs. 11500/-

US\$ 310

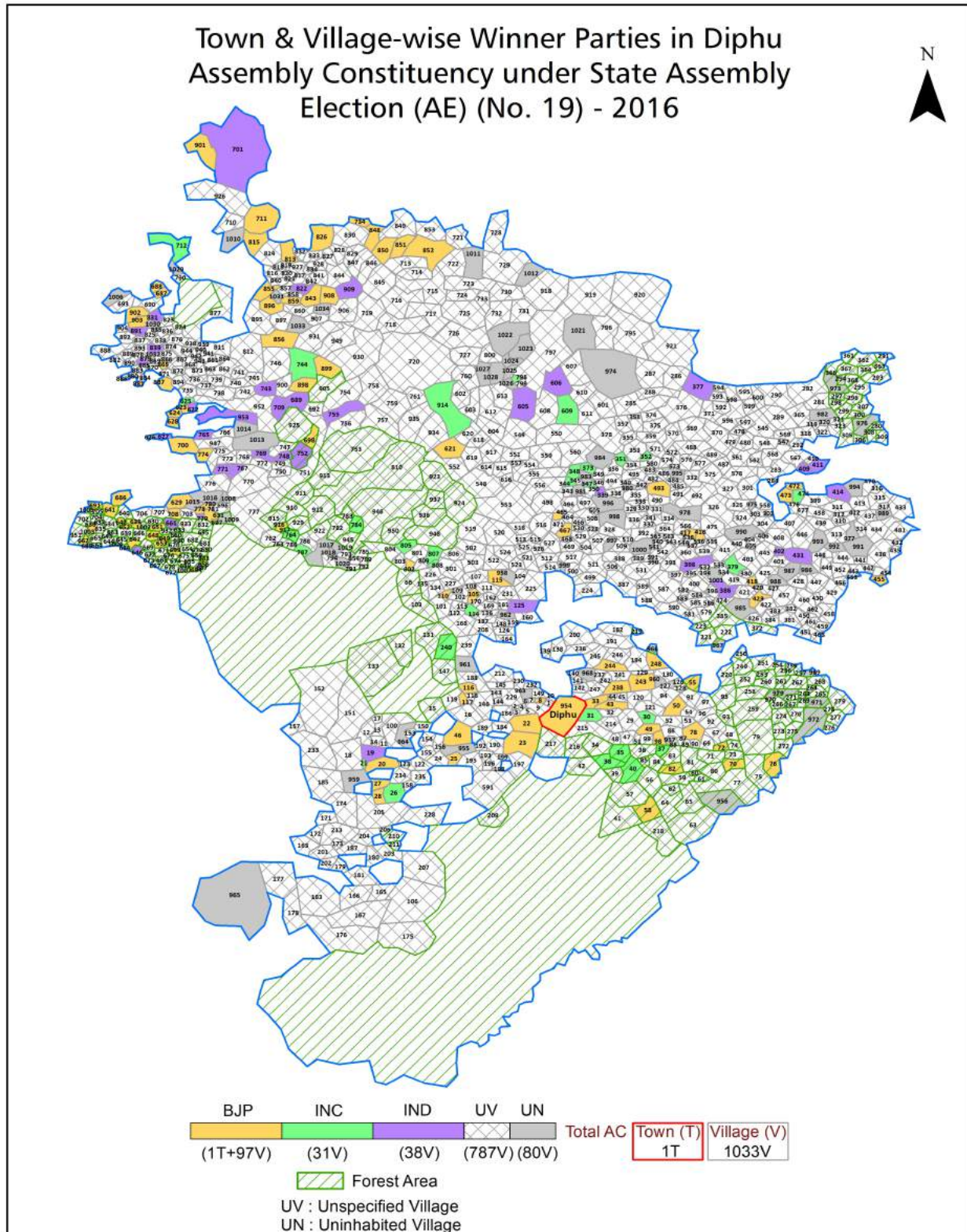
© Datanet India Pvt. Ltd.

All rights reserved. No part of this book may be reproduced, stored in a retrieval system or transmitted in any form or by any means, mechanical photocopying, photographing, scanning, recording or otherwise without the prior written permission of the publisher. Please refer to Disclaimer at page no. 228 for the use of this publication.

Printed in India

No.	Particulars	Page No.
	Introduction	
1	Assembly Constituency -(Vidhan Sabha) at a Glance Features of Assembly as per Delimitation Commission of India (2008)	1-2
	Location and Political Maps	
2	Location Map Boundaries of Assembly Constituency -(Vidhan Sabha) in District Boundaries of Assembly Constituency under Parliamentary Constituency -(Lok Sabha) Town & Village-wise Winner Parties- 2021, 2019, 2016, 2014, 2011 and 2009	3-10
	Administrative Setup (2011)	
3	District Sub-district Towns Villages Inhabited Villages Uninhabited Villages Village Panchayat Intermediate Panchayat	11-56
	Demographics (2011)	
4	Population Households Rural/Urban Population Towns and Villages by Population Size Sex Ratio (Total & 0-6 Years) Religious Population Social Population Literacy Rate	57-58
	Electoral Features	
5	Important Dates of Last Elections Held Electors by Gender Service Electors Voters Voters Turnout Polling Stations & Average Number of Electors per Polling Station Electors by Age Group Present Elected Representatives	59-64
	Historical Summary Election Results	
6	Vote Share of Major Parties Winning Margin (Number & Percentage) Polarity of Parties Summary Result of Assembly Segment of Parliamentary Elections 2019, 2014, 2009, 2004 and 1999 Summary Result of Assembly Elections 2021, 2016, 2011, 2006, 2001, 1996, 1991, 1985, 1983 and 1978	65-83
	Polling Station Level Election Results	
7	Name and Number of Polling Station 2021, 2019, 2016, 2014, 2011 and 2009 Polling Station-wise Electors, Voters & Voters Turnout 2021, 2019, 2016, 2014, 2011 and 2009 Polling Station wise Elections Results 2021, 2019, 2016, 2014, 2011 and 2009	84-207
	Share of Assembly Constituency	
8	Share of Assembly Constituency -(Vidhan Sabha) in State, District and Parliamentary Constituency -(Lok Sabha)	208
	Socio-Economic Amenities (2011)	
9	Access to Administrative Units Agricultural, Manufacturing and Industrial Commodities Demographic Indicators Education Health & Manpower Drinking Water Supply Sanitation Entertainment and Recreations Infrastructure Power Food Allocation Distribution and Marketing of Agriculture Commodities Infrastructure Transport and Road Infrastructure Communication Banking and Financial Services Land Use Irrigation Source	210-224
10	Abbreviation & Sources	226
11	Disclaimer	228

Location & Political Map



Administrative Setup

List of Village Panchayat & Intermediate Panchayat (Block) Name - 2011

Village Name	Village Panchayat Name	Intermediate Panchayat Name
12 Mile Nepali Basti	-	Lumbajong
14 Mile Nepali Bosti	-	Lumbajong
25 Mile Nepali Basti	-	Bokajan
3 No. Kasmir Tilla	-	Bokajan
50 Gang Quarter	-	Lumbajong
7 No. Nepali Bosti	-	Bokajan
Adarsha Gaon	-	Lumbajong
Adhivasi Gaon	-	Lumbajong
Adivashi Vill	-	Bokajan
Ajar Guri	-	Langsomepi
Ake - Et Taro	-	Langsomepi
Am. Teron	-	Langsomepi
Ambari Gaon	-	Howraghat
Amguri Gaon	-	Langsomepi
Amlakhi Bagan	-	Lumbajong
Ampathar	-	Howraghat
Ampukhuri	-	Howraghat
Ampukhuri	-	Howraghat
Ampukhuri No.2	-	Howraghat
Amreng Engti	-	Bokajan
Amreng Teron	-	Bokajan
Amri Hanse Basti(Hemari)	-	Lumbajong
Amri Rongpi	-	Bokajan
Andra Terang	-	Lumbajong
Ataha Rongphar	-	Langsomepi
Ati Gaon	-	Langsomepi
Attur Gaon	-	Bokajan
Baburam Rongphar	-	Lumbajong
Bachok Rongphar	-	Langsomepi

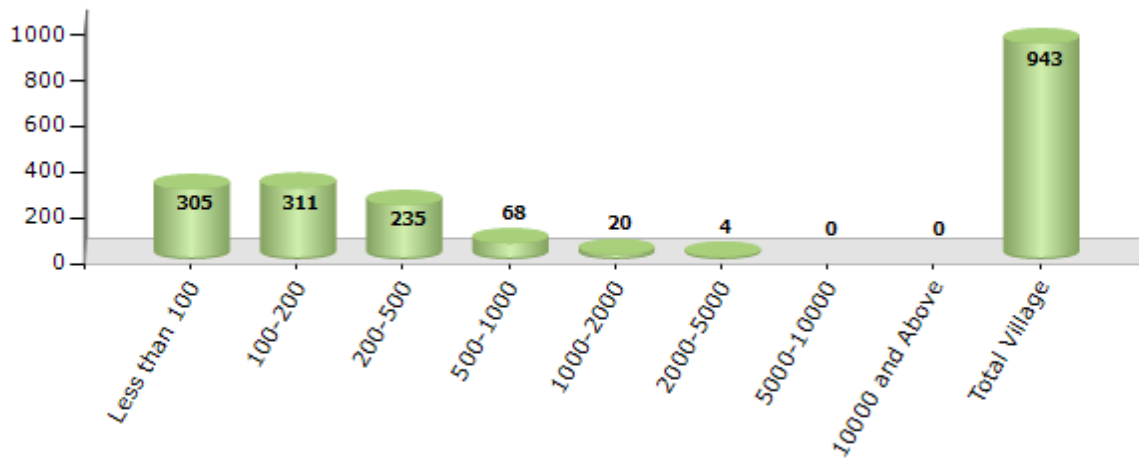
Contd....

Demographics

Number of Villages by Population Size - 2011

Less than 100	100-200	200-500	500-1000	1000-2000	2000-5000	5000-10000	10000 and Above	Total Village
305	311	235	68	20	4	0	0	943

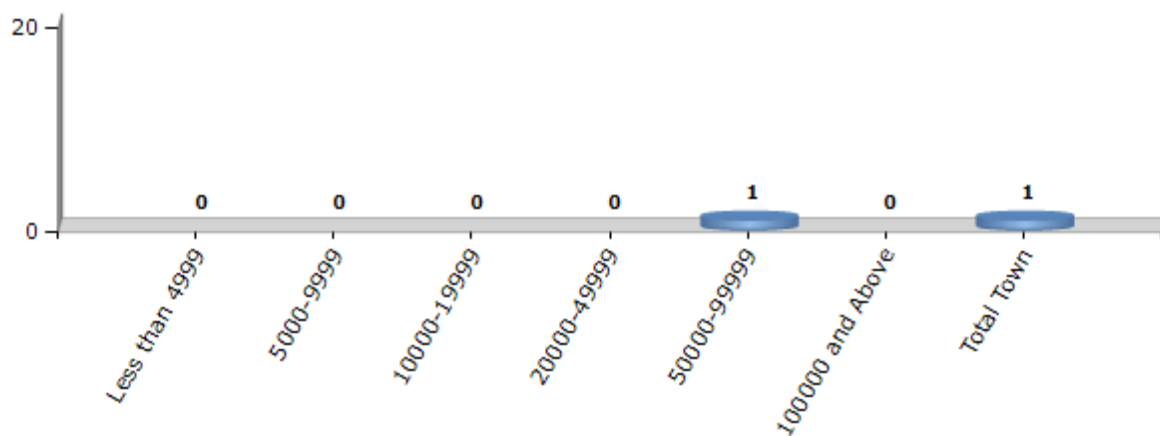
Number of Villages by Population Size - 2011



Number of Towns by Population Size - 2011

Less than 4999	5000-9999	10000-19999	20000-49999	50000-99999	100000 and Above	Total Town
0	0	0	0	1	0	1

Number of Towns by Population Size - 2011

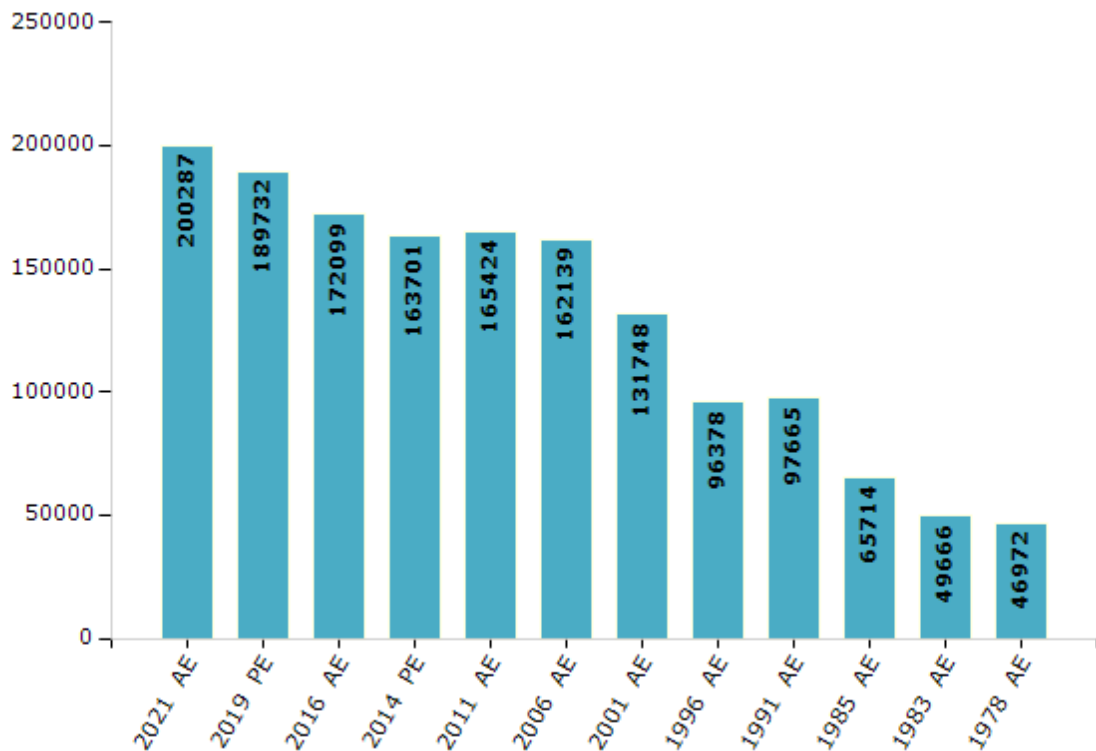


Electoral Features

Electors by Male & Female

Year	Male	Female	Others	Total	Year	Male	Female	Others	Total
2021 AE	100541	99737	9	200287	1996 AE	51671	44707	-	96378
2019 PE	96251	93475	6	189732	1991 AE	52911	44754	-	97665
2016 AE	87889	84210	0	172099	1985 AE	35778	29936	-	65714
2014 PE	83645	80056	0	163701	1983 AE	26361	23305	-	49666
2011 AE	85473	79951	0	165424	1978 AE	24616	22356	-	46972
2009 PE	-	-	-	-	1972 AE	-	-	-	-
2006 AE	84601	77538	-	162139	1967 AE	-	-	-	-
2004 PE	-	-	-	-	1962 AE	-	-	-	-
2001 AE	70290	61458	-	131748	1957 AE	-	-	-	-
1999 PE	-	-	-	-	1952 AE	-	-	-	-

Number of Electors



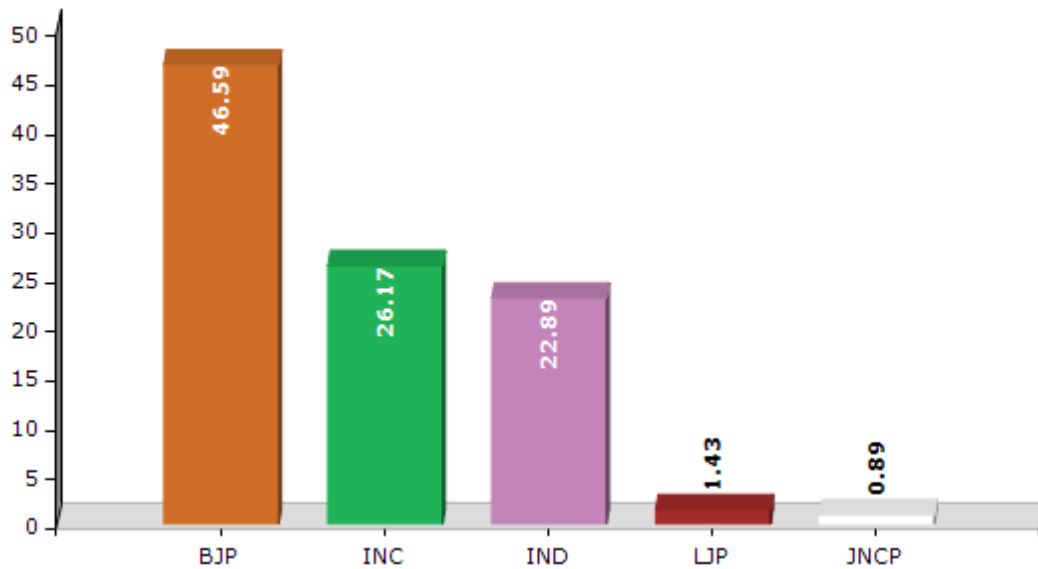
Note : AE : Assembly Election, PE : Assembly Segment of Parliamentary Election

Historical Summary Election Results

Summary Result of Assembly Election - 2016

Candidate Name	Party	Votes	Votes %
Sum Ronghang	BJP	64421	46.59
Bidya Sing Engleng	INC	36185	26.17
Dr. Jayanta Rongpi	IND	31647	22.89
Dipendra Rongpi	LJP	1975	1.43
Mary Kramsapi	JNCP	1231	0.89
	NOTA	2803	2.03

Votes Percentage of Top Parties - 2016



Polling Station Level Election Results

Number and Name of Polling Stations (PS) (2016)

Number of Polling Stations	Name of Polling Stations	Number of Polling Stations	Name of Polling Stations
1	Renughat L.P. School (R/W)	22	Amguri L.P. School (L/W)
2	Renughat L.P. School (L/W)	23	Dighali Majgaon L.P. School (R/W)
3	Borpung No. 1 Chandrasing Tisso Gaon Lp School	24	Dighali Majgaon L.P. School (M/W)
4	Langlokso L.P. School	25	Dighali Majgaon L.P. School (L/W)
5	Dhentaghat L.P. School	26	Phelang Kro L.P. School
6	Samelangso English Medium School (R/W)	27	Bonghomthari L.P. School
7	Samelangso English Medium School (L/W)	28	Habe Kro Gaon L.P. School (L/W)
8	Paisa Engti L.P. School	29	Biswanath Pathar L.P. School
9	Langhin Govt. M.E. School (R/W)	30	Phuloni Circle Office (R/W)
10	Langhin Govt. M.E. School (M/W)	31	Phuloni Circle Office (L/W)
11	Langhin Govt. M.E. School (L/W)	32	Langherang L.P. School
12	Bahbari L.P. School	33	Rong Nagar L.P. School
13	Langsomepi L.P. School (R/W)	34	Udharjan Tisso Gaon L.P. School (R/W)
14	Langsomepi L.P. School (L/W)	35	Udharjan Tisso Gaon L.P. School (L/W)
15	Jamuguri L.P. School (R/W)	36	Dighalpani L.P. School
16	Jamuguri L.P. School (L/W)	37	Singner Gaon Camp L.P. School
17	Ganeshthan L.P. School	38	Lang Chitung L.P. School
18	Goroimari L.P. School	39	Siloni Longnit L.P. School (L/W)
19	Langhin Pam Gaon High School (R/W)	40	Siloni Longnit L.P. School (R/W)
20	Langhin Pam Gaon High School (L/W)	41	Tikoklangso L.P. School
21	Amguri L.P. School (R/W)	42	Thekerajan L.P. School

Contd....

Polling Station Level Election Results

Polling Station-wise Votes Secured by Overall Top Five Parties in Diphu Assembly in Assembly Election (AE) under Autonomous District Parliamentary Constituency in Assam (2016)

Number of Polling Station	Winner - Sum Ronghang (BJP)	Runner-up - Bidya Sing Engleng (INC)	3rd - Dr. Jayanta Rongpi (IND)	4th - Dipendra Rongpi (LJP)	5th - Mary Kramsapi (JNCP)	NOTA	Other	Total Votes Secured
36	196	325	388	21	11	7	0	948
37	35	105	196	8	1	1	0	346
38	75	22	81	2	2	4	0	186
39	32	96	109	5	6	12	0	260
40	84	156	96	10	8	14	0	368
41	48	118	223	3	14	13	0	419
42	55	125	79	2	0	5	0	266
43	71	211	186	7	9	4	0	488
44	94	133	201	7	12	6	0	453
45	144	143	289	11	7	25	0	619
46	125	152	193	12	1	8	0	491
47	371	22	1	5	4	3	0	406
48	507	46	18	1	1	7	0	580
49	384	29	14	0	1	1	0	429
50	408	196	17	8	5	7	0	641
51	250	61	8	2	2	5	0	328
52	565	23	13	4	1	7	0	613
53	117	91	201	3	2	10	0	424
54	93	96	118	9	1	2	0	319
55	77	45	133	4	3	5	0	267
56	173	79	238	11	3	8	0	512
57	193	91	210	4	2	5	0	505
58	362	170	86	9	2	8	0	637
59	450	112	33	5	1	15	0	616
60	251	50	210	5	6	11	0	533
61	388	189	50	8	5	12	0	652
62	373	84	21	7	3	10	0	498
63	315	111	17	9	1	6	0	459
64	305	100	84	15	5	8	0	517
65	503	91	71	7	2	11	0	685
66	610	107	30	9	7	25	0	788
67	448	156	60	12	2	6	0	684
68	283	75	10	4	3	4	0	379
69	181	121	332	11	12	19	0	676
70	97	44	108	10	2	8	0	269

Contd....

Polling Station Level Election Results

Winner, Runner-up and 3rd Party Position & Winning Margin According to Polling Stations in Diphu Assembly in Assembly Election (AE) under Autonomous District Parliamentary Constituency in Assam (2016)

Polling Station Number	Winner Party	Winner Votes (%)	Runner-up Party	Runner-up Votes (%)	Winning Margin Votes (%)	Third Party	Third Party Votes (%)	Other Votes (%)
71	IND (DJR)	242 (44.65)	BJP	196 (36.16)	46 (8.49)	INC	70 (12.92)	34 (6.27)
72	IND (DJR)	278 (50.18)	BJP	131 (23.65)	147 (26.53)	INC	103 (18.59)	42 (7.58)
73	BJP	173 (41.79)	IND (DJR)	134 (32.37)	39 (9.42)	INC	92 (22.22)	15 (3.62)
74	IND (DJR)	390 (57.35)	INC	147 (21.62)	243 (35.73)	BJP	117 (17.21)	26 (3.82)
75	INC	120 (34.99)	IND (DJR)	106 (30.9)	14 (4.09)	BJP	103 (30.03)	14 (4.08)
76	IND (DJR)	515 (54.73)	BJP	236 (25.08)	279 (29.65)	INC	139 (14.77)	51 (5.42)
77	BJP	259 (46.75)	IND (DJR)	170 (30.69)	89 (16.06)	INC	103 (18.59)	22 (3.97)
78	BJP	336 (42.59)	IND (DJR)	240 (30.42)	96 (12.17)	INC	189 (23.95)	24 (3.04)
79	BJP	151 (43.9)	IND (DJR)	95 (27.62)	56 (16.28)	INC	93 (27.03)	5 (1.45)
80	BJP	238 (38.7)	INC	234 (38.05)	4 (0.65)	IND (DJR)	111 (18.05)	32 (5.2)
81	BJP	390 (73.31)	INC	72 (13.53)	318 (59.78)	IND (DJR)	51 (9.59)	19 (3.57)
82	BJP	235 (49.79)	INC	115 (24.36)	120 (25.43)	IND (DJR)	94 (19.92)	28 (5.93)
83	BJP	537 (61.3)	INC	185 (21.12)	352 (40.18)	IND (DJR)	130 (14.84)	24 (2.74)
84	BJP	567 (71.77)	INC	129 (16.33)	438 (55.44)	IND (DJR)	80 (10.13)	14 (1.77)
85	BJP	243 (44.51)	IND (DJR)	159 (29.12)	84 (15.39)	INC	127 (23.26)	17 (3.11)
86	BJP	286 (55.53)	INC	106 (20.58)	180 (34.95)	IND (DJR)	105 (20.39)	18 (3.5)
87	BJP	323 (44.8)	INC	204 (28.29)	119 (16.51)	IND (DJR)	150 (20.8)	44 (6.1)
88	BJP	413 (66.61)	IND (DJR)	108 (17.42)	305 (49.19)	INC	95 (15.32)	4 (0.65)
89	BJP	204 (58.96)	INC	93 (26.88)	111 (32.08)	IND (DJR)	42 (12.14)	7 (2.02)
90	BJP	398 (56.21)	INC	149 (21.05)	249 (35.16)	IND (DJR)	121 (17.09)	40 (5.65)
91	BJP	175 (52.08)	IND (DJR)	86 (25.6)	89 (26.48)	INC	66 (19.64)	9 (2.68)
92	BJP	306 (54.74)	INC	143 (25.58)	163 (29.16)	IND (DJR)	103 (18.43)	7 (1.25)
93	IND (DJR)	170 (47.89)	BJP	112 (31.55)	58 (16.34)	INC	63 (17.75)	10 (2.82)
94	BJP	370 (47.44)	IND (DJR)	220 (28.21)	150 (19.23)	INC	159 (20.38)	31 (3.97)
95	IND (DJR)	273 (38.18)	BJP	258 (36.08)	15 (2.1)	INC	139 (19.44)	45 (6.29)
96	BJP	141 (48.96)	IND (DJR)	75 (26.04)	66 (22.92)	INC	65 (22.57)	7 (2.43)
97	BJP	269 (39.5)	IND (DJR)	224 (32.89)	45 (6.61)	INC	151 (22.17)	37 (5.43)
98	IND (DJR)	286 (39.45)	BJP	216 (29.79)	70 (9.66)	INC	150 (20.69)	73 (10.07)
99	BJP	313 (50.32)	INC	145 (23.31)	168 (27.01)	IND (DJR)	131 (21.06)	33 (5.31)
100	IND (DJR)	109 (46.19)	INC	76 (32.2)	33 (13.99)	BJP	42 (17.8)	9 (3.81)
101	INC	67 (45.58)	BJP	64 (43.54)	3 (2.04)	IND (DJR)	14 (9.52)	2 (1.36)
102	INC	75 (57.69)	BJP	36 (27.69)	39 (30)	IND (DJR)	16 (12.31)	3 (2.31)
103	INC	204 (61.63)	BJP	65 (19.64)	139 (41.99)	IND (DJR)	53 (16.01)	9 (2.72)
104	INC	231 (79.66)	IND (DJR)	30 (10.34)	201 (69.32)	BJP	27 (9.31)	2 (0.69)
105	INC	113 (55.94)	IND (DJR)	59 (29.21)	54 (26.73)	BJP	26 (12.87)	4 (1.98)

Contd....

Socio-Economic Amenities - Rural

Access to Education Facilities

Particulars	Number of Villages (% of Population)				
	Available	Not Available	If Not Available (Distance of Nearest Facility)		
			A	B	C
Govt. Primary School	430 (71)	523 (29)	294 (16)	140 (7)	45 (3)
Private Primary School	29 (7)	924 (93)	23 (1)	14 (1)	5 (0)
Govt. Middle School	65 (19)	888 (81)	504 (47)	203 (18)	127 (10)
Private Middle School	4 (3)	949 (97)	22 (3)	16 (2)	7 (0)
Govt. Secondary School	12 (5)	941 (95)	301 (32)	290 (32)	284 (24)
Private Secondary School	6 (3)	947 (97)	16 (3)	17 (2)	15 (1)
Govt. Senior Secondary School	1 (0)	952 (100)	155 (17)	271 (30)	463 (40)
Private Senior Secondary School	3 (2)	950 (98)	20 (4)	17 (3)	20 (3)
Govt. Arts and Science Degree College	0 (0)	953 (100)	78 (9)	178 (18)	637 (66)
Private Arts and Science Degree College	0 (0)	953 (100)	8 (2)	22 (3)	30 (2)
Govt. Engineering College	0 (0)	953 (100)	0 (0)	0 (0)	953 (100)
Private Engineering College	0 (0)	953 (100)	0 (0)	0 (0)	0 (0)
Govt. Medicine College	0 (0)	953 (100)	0 (0)	1 (0)	952 (100)
Private Medicine College	0 (0)	953 (100)	0 (0)	0 (0)	0 (0)
Govt. Management Institute	0 (0)	953 (100)	7 (1)	2 (0)	827 (84)
Private Management Institute	0 (0)	953 (100)	3 (1)	3 (1)	109 (13)
Govt. Polytechnic	0 (0)	953 (100)	4 (1)	3 (0)	896 (92)
Private Polytechnic	0 (0)	953 (100)	0 (0)	1 (0)	14 (1)
Govt. Vocational Training School/ITI	1 (0)	952 (100)	43 (3)	74 (7)	778 (80)
Private Vocational Training School/ITI	1 (0)	952 (100)	4 (1)	4 (1)	11 (1)
Govt. Non Formal Training Centre	0 (0)	953 (100)	31 (4)	44 (3)	733 (76)
Private Non Formal Training Centre	1 (0)	952 (100)	6 (1)	2 (0)	28 (2)
Govt. School For Disabled	0 (0)	953 (100)	15 (2)	14 (1)	744 (76)
Private School For Disabled	0 (0)	953 (100)	7 (1)	9 (1)	49 (3)
Government Others	0 (0)	953 (100)	3 (1)	15 (1)	351 (34)
Private Others	0 (0)	953 (100)	16 (1)	31 (3)	165 (15)

Note : Distance A : Less than 5 km; B : Between 5-10 km; C : 10+ km.; Source : Data Analysis is based on 2011 Census.

DISCLAIMER

The Terms of Use and Disclaimer of Datanet India Private Limited (hereinafter referred to as "Datanet") for use of this analysis report of **Diphu Assembly Constituency (Diphu Vidhan Sabha)** :-

1. **Assembly Factbook™** is a Registered Trade Mark owned by Datanet.
2. All the maps are sketched and graphical representation only and have not been drawn to the scale and also not to represent the actual geographical area or boundary of the unit.
3. The data for the aforesaid analysis is based on authentic sources and has been culled from the various publications of Census, CSO and NSSO for district and block level data, various central and state government departments, Central & State Elections Commissions and the concerned Returning Officers' releases, Electoral Rolls, Election results and allied publications, internal assessment, surveys, estimates and analysis. Therefore, certain adjustment of data at micro level may have been done to arrive closer to the macro data.
4. Data have been provided on an "As Is" and "As AVAILABLE" basis
5. The colours shown in the maps or diagram and charts of a particular party, alliance or AC are indicative and do not represent them.
6. This publication which includes maps, sheets, graphs and data would be the property under copyright of Datanet only. The user may use these for its internal study, analysis and research purposes. It's public display, re-selling or any commercial uses by the user are not allowed.
7. Datanet has taken due care and caution in compilation and processing of data and allied information, but does not guarantee the accuracy, adequacy or completeness of any information/analysis and will be not responsible for any errors or omissions or for the results obtained from the use of such information/analysis.
8. All the contents for the publication have been culled from various authentic sources and Datanet reasonably believes such sources to be reliable, but does not make any representations, express or implied as to the accuracy or fitness of use of such information. The information or contents of the information/analysis do not constitute advice and should not be relied upon in making (or refraining from making) any decision. Any reliance placed upon the information provided by Datanet is the sole responsibility and strictly at the user's risk.
9. In no event will Datanet be liable for any damages (including, without limitation, damages for loss of business projects, or loss of profits) arising in contract, tort or otherwise from the use of or inability to use any of its contents, or from any action taken (or refrained from being taken) as a result of using the analysis or any of its contents. Datanet its directors, owners, editors, officials, employees, distributor and agents or any associate will not be liable for any errors in the information contained or any consequences arising from the use of the contents of the provided information/analysis.
10. If any provision of these terms and conditions is held invalid or illegal or unenforceable for any reason by any court of competent jurisdiction, such provision shall be severed and the remainder of provisions of the terms and conditions shall continue in full force and effect as if the Term of Use had been executed with the invalid, illegal or unenforceable provision eliminated.
11. If there are any discrepancies in the information provided, please bring it to attention of Datanet for suitable rectification measures.

**Buy Online This Complete Book At
Datanet India eBooks Store**

www.indiastatpublications.com

or go directly at

**[http://www.indiastatpublications.com/
Assembly_factbook/Assam/Autonomous_District/ Diphu](http://www.indiastatpublications.com/Assembly_factbook/Assam/Autonomous_District/Diphu)**

 **india**stat**elections**

