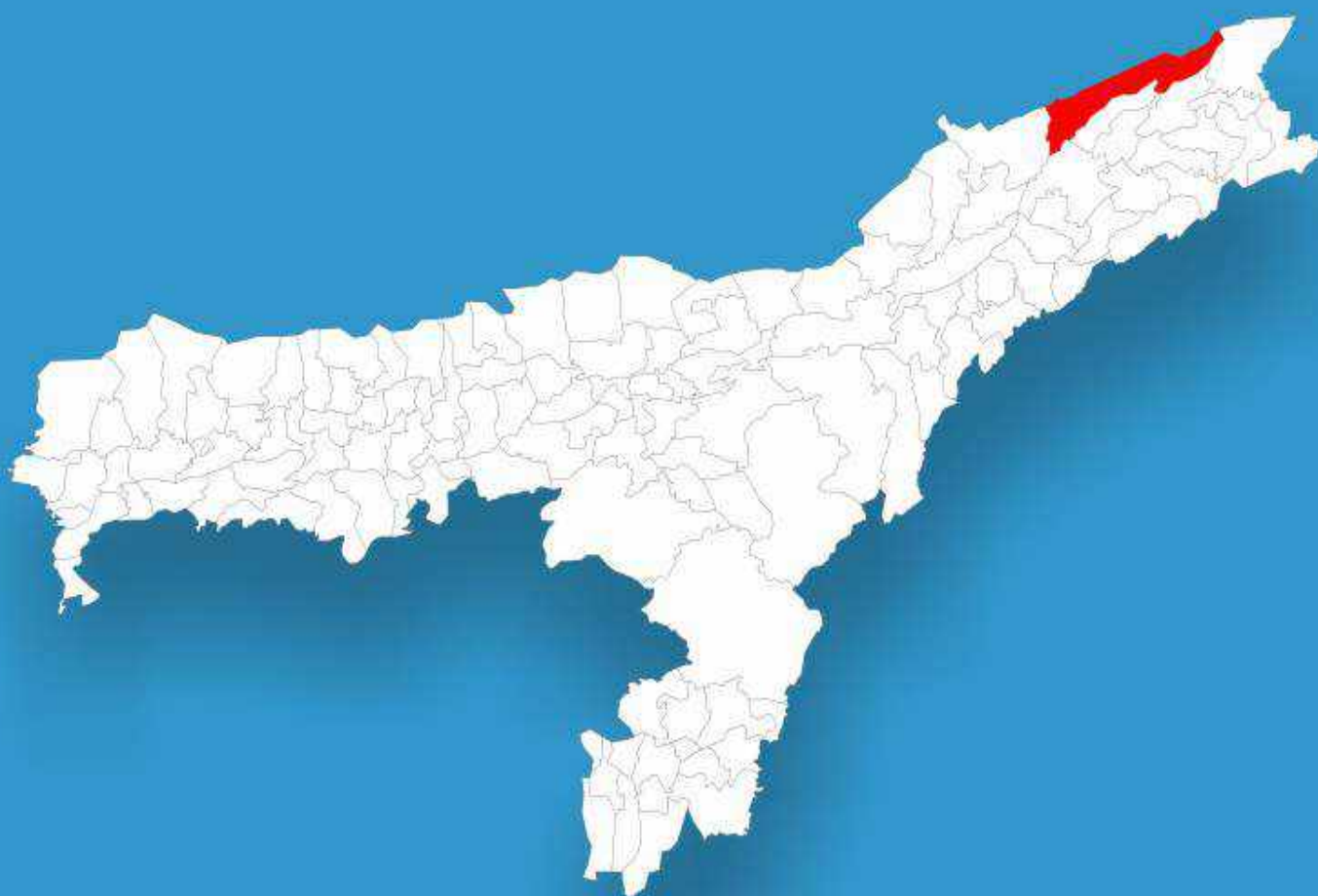




Assam

Assembly Factbook™

Jonai Assembly Constituency

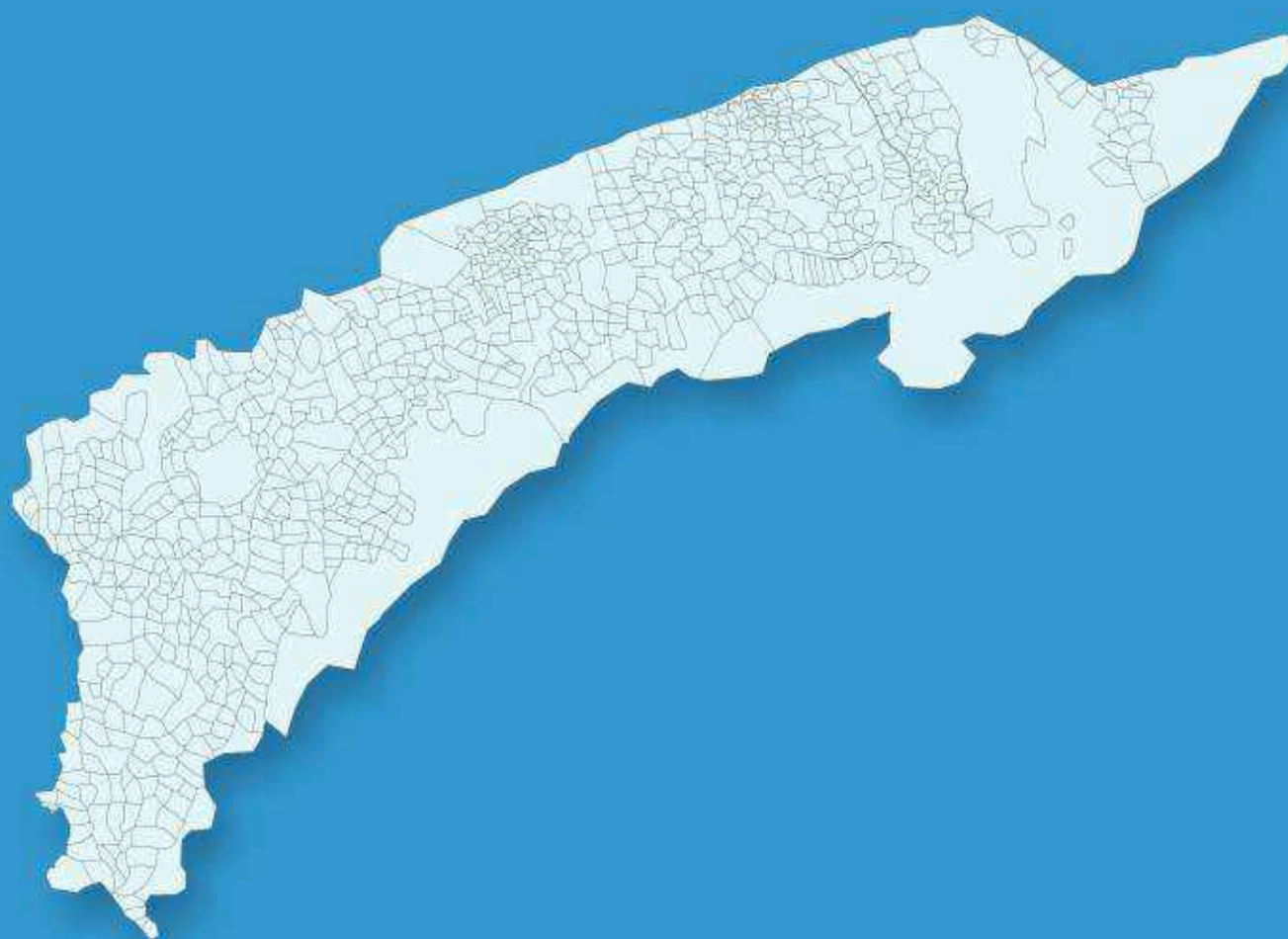


Key Electoral Data of Jonai
Assembly Constituency (Vidhan Sabha)

Assam

Assembly Factbook™

Jonai Assembly Constituency



Jonai Vidhan Sabha

Editor & Director

Dr. R.K. Thukral

Research Editor

Dr. Shafeeq Rahman

Compiled, Researched and Published by Datanet India Pvt. Ltd.

D-100, 1st Floor,

Okhla Industrial Area, Phase-I,
New Delhi- 110020.

Ph.: 91-11- 43580781-84

Email : support@indiastatpublications.com

Website : www.indiastatelections.com

Online Book Store :

www.indiastatpublications.com

Report No. : AFB/AS-114-0125

ISBN : 978-93-5313-382-5

First Edition : January, 2018

Eighth Updated Edition : January, 2025

Price : Rs. 11500/-

US\$ 310

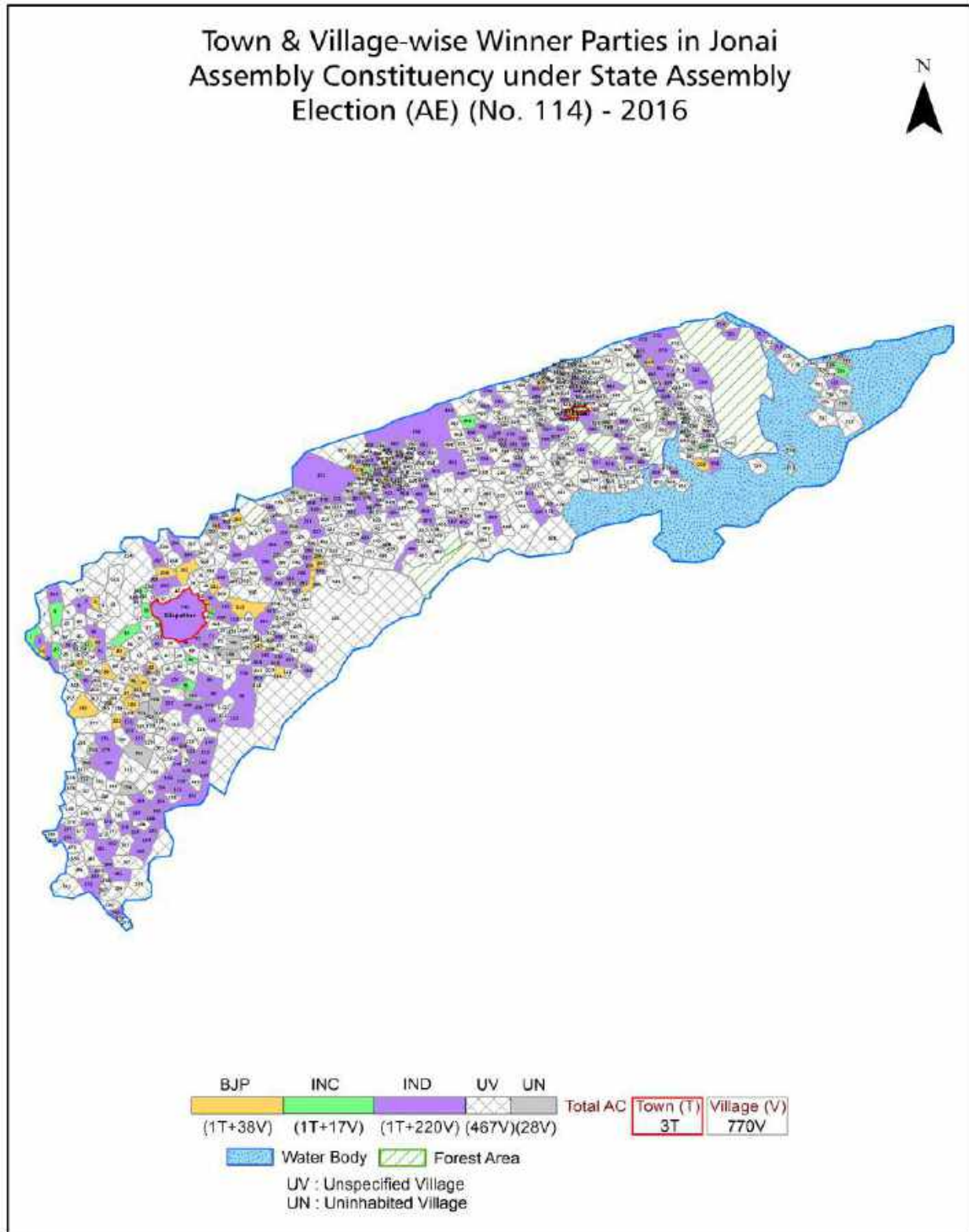
© Datanet India Pvt. Ltd.

All rights reserved. No part of this book may be reproduced, stored in a retrieval system or transmitted in any form or by any means, mechanical photocopying, photographing, scanning, recording or otherwise without the prior written permission of the publisher. Please refer to Disclaimer at page no. 254 for the use of this publication.

Printed in India

No.	Particulars	Page No.
	Introduction	
1	Assembly Constituency -(Vidhan Sabha) at a Glance Features of Assembly as per Delimitation Commission of India (2008)	1-2
	Location and Political Maps	
2	Location Map Boundaries of Assembly Constituency -(Vidhan Sabha in District Boundaries of Assembly Constituency under Parliamentary Constituency -(Lok Sabha) Town & Village-wise Winner Parties- 2024, 2021, 2019, 2016, 2014, 2011 and 2009	3-10
	Administrative Setup (2011)	
3	District Sub-district Towns Villages Inhabited Villages Uninhabited Villages Village Panchayat Intermediate Panchayat	11-46
	Demographics (2011)	
4	Population Households Rural/Urban Population Towns and Villages by Population Size Sex Ratio (Total & 0-6 Years) Religious Population Social Population Literacy Rate	47-48
	Electoral Features	
5	Important Dates of Last Elections Held Electors by Gender Service Electors Voters Voters Turnout Polling Stations & Average Number of Electors per Polling Station Electors by Age Group Present Elected Representatives	49-54
	Historical Summary Election Results	
6	Vote Share of Major Parties Winning Margin (Number & Percentage) Polarity of Parties Summary Result of Assembly Segment of Parliamentary Elections 2024, 2019, 2014, 2009, 2004 and 1999 Summary Result of Assembly Elections 2021, 2016, 2011, 2006, 2001, 1996, 1991, 1985, 1983 and 1978	55-73
	Polling Station Level Election Results	
7	Name and Number of Polling Station 2024, 2021, 2019, 2016, 2014, 2011 and 2009 Polling Station-wise Electors, Voters & Voters Turnout 2024, 2021, 2019, 2016, 2014, 2011 and 2009 Polling Station wise Elections Results 2024, 2021, 2019, 2016, 2014, 2011 and 2009	74-233
	Share of Assembly Constituency	
8	Share of Assembly Constituency -(Vidhan Sabha) in State, District and Parliamentary Constituency -(Lok Sabha)	234
	Socio-Economic Amenities (2011)	
9	Access to Administrative Units Agricultural, Manufacturing and Industrial Commodities Demographic Indicators Education Health & Manpower Drinking Water Supply Sanitation Entertainment and Recreations Infrastructure Power Food Allocation Distribution and Marketing of Agriculture Commodities Infrastructure Transport and Road Infrastructure Communication Banking and Financial Services Land Use Irrigation Source	236-250
10	Abbreviation & Sources	252
11	Disclaimer	254

Location & Political Map



Administrative Setup

List of Village Panchayat & Intermediate Panchayat (Block) Name - 2011

Village Name	Village Panchayat Name	Intermediate Panchayat Name
Abarali Gaon	Ujani Sissitongani	Sissiborgaon
Abhai Pur Kachari	Bahir Jonai Luhijan	Murkongselek
Adi Tako	Laimukuri	Murkongselek
Akajan Bangali	Akajan	Sissiborgaon
Akajan Jon Gaon	Akajan	Sissiborgaon
Akajan Jongaon	Akajan	Sissiborgaon
Akajan Miri	Akajan	Sissiborgaon
Alu Para	Silasuti	Sissiborgaon
Amguri Bali	Ujonisissitongani	Sissiborgaon
Amguri Dambuk	Ujonisissitongani	Sissiborgaon
Amguri Kachari	-	Murkongselek
Amlakhi Pait	Simen Chapori	Murkongselek
Anu Dolung	Simen Chapori	Murkongselek
Apsara	Simen Chapori	Murkongselek
Arcy Aka	Silasuti	Sissiborgaon
Arne Pan Bari Hajong	-	Sissiborgaon
Arun Chapori	Zelem	Murkongselek
Ayengia Patri	Kulajan	Sissiborgaon
Ayengia Patri	-	Sissiborgaon
Badhuwa Chuk	Ramdhan Dikhari	Murkongselek
Bag Gaon	Simen Chapori	Murkongselek
Bag Gaon	-	Murkongselek
Bahir Chilai	Silley	Murkongselek
Bahir Jonai (Part I)	Bahir Jonai Luhijan	Murkongselek
Bahir Jonai Pathar	Bahir Jonai Luhijan	Murkongselek
Balai Mara	Simen Chapori	Murkongselek
Bali Gaon	Simen Chapori	Murkongselek
Bali Jan	Borlung	Sissiborgaon
Baligaon	Kulajan	Sissiborgaon

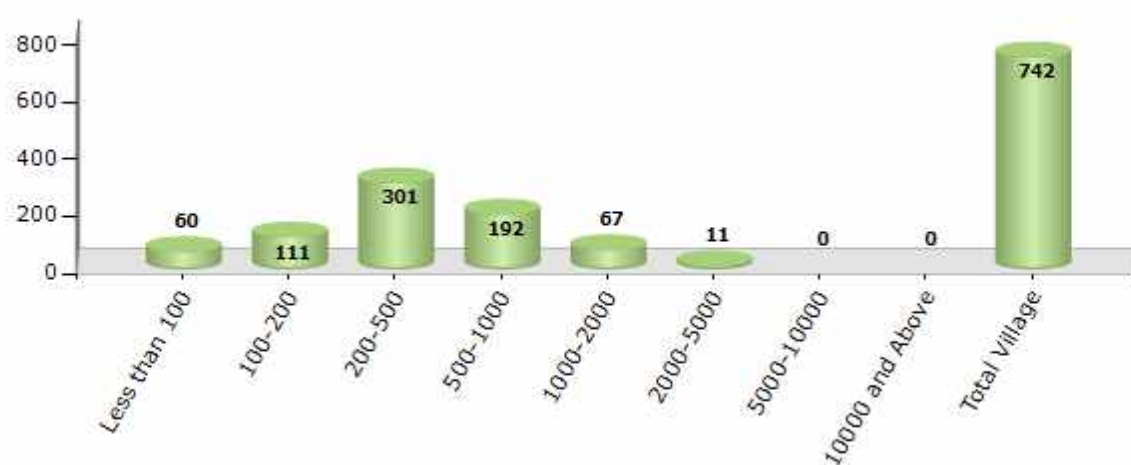
Contd....

Demographics

Number of Villages by Population Size - 2011

Less than 100	100-200	200-500	500-1000	1000-2000	2000-5000	5000-10000	10000 and Above	Total Village
60	111	301	192	67	11	0	0	742

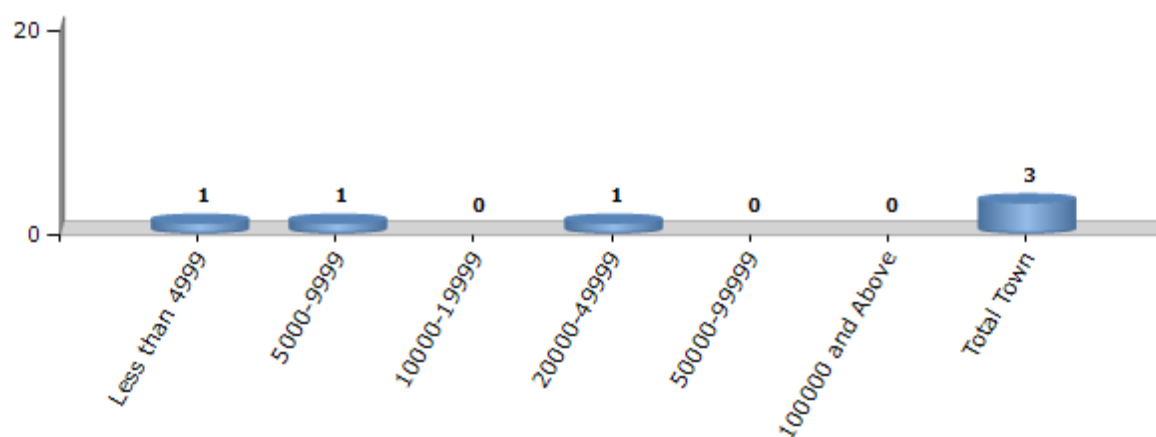
Number of Villages by Population Size - 2011



Number of Towns by Population Size - 2011

Less than 4999	5000-9999	10000-19999	20000-49999	50000-99999	100000 and Above	Total Town
1	1	0	1	0	0	3

Number of Towns by Population Size - 2011

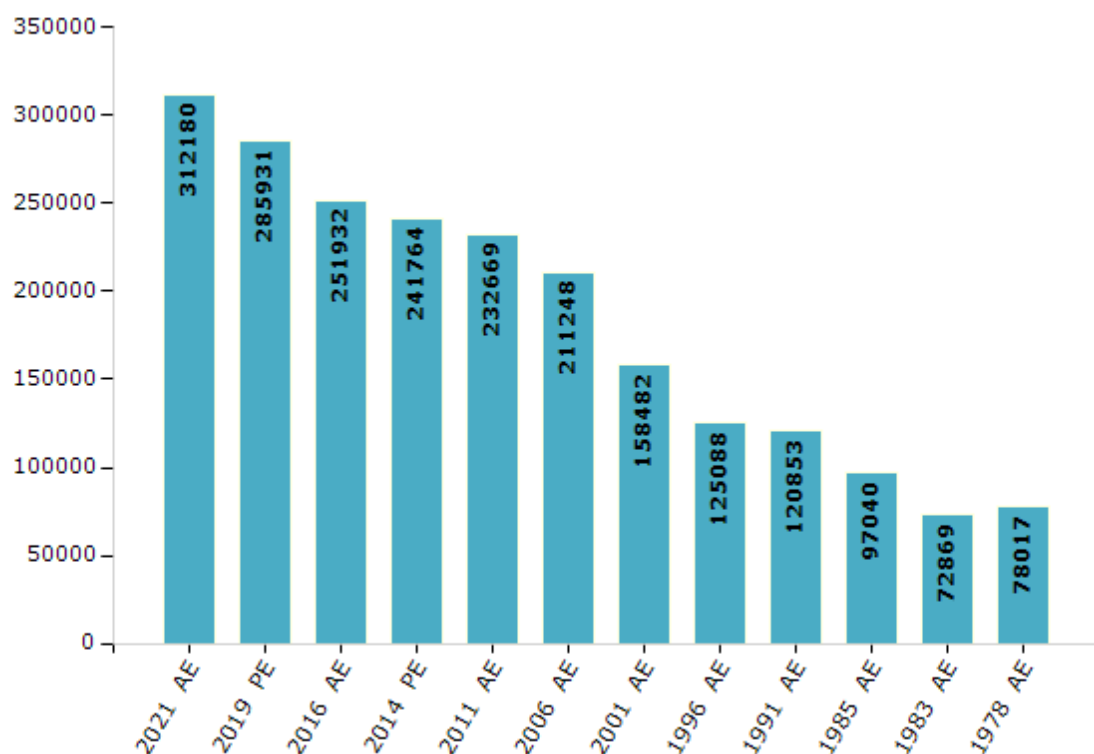


Electoral Features

Electors by Male & Female

Year	Male	Female	Others	Total	Year	Male	Female	Others	Total
2021 AE	158717	153462	1	312180	1996 AE	67463	57625	-	125088
2019 PE	146858	139059	14	285931	1991 AE	72520	48333	-	120853
2016 AE	130277	121655	0	251932	1985 AE	58227	38813	-	97040
2014 PE	124334	117430	0	241764	1983 AE	38707	34162	-	72869
2011 AE	118602	114067	0	232669	1978 AE	40034	37983	-	78017
2009 PE	-	-	-	-	1972 AE	-	-	-	-
2006 AE	108609	102639	-	211248	1967 AE	-	-	-	-
2004 PE	-	-	-	-	1962 AE	-	-	-	-
2001 AE	81866	76616	-	158482	1957 AE	-	-	-	-
1999 PE	-	-	-	-	1952 AE	-	-	-	-

Number of Electors



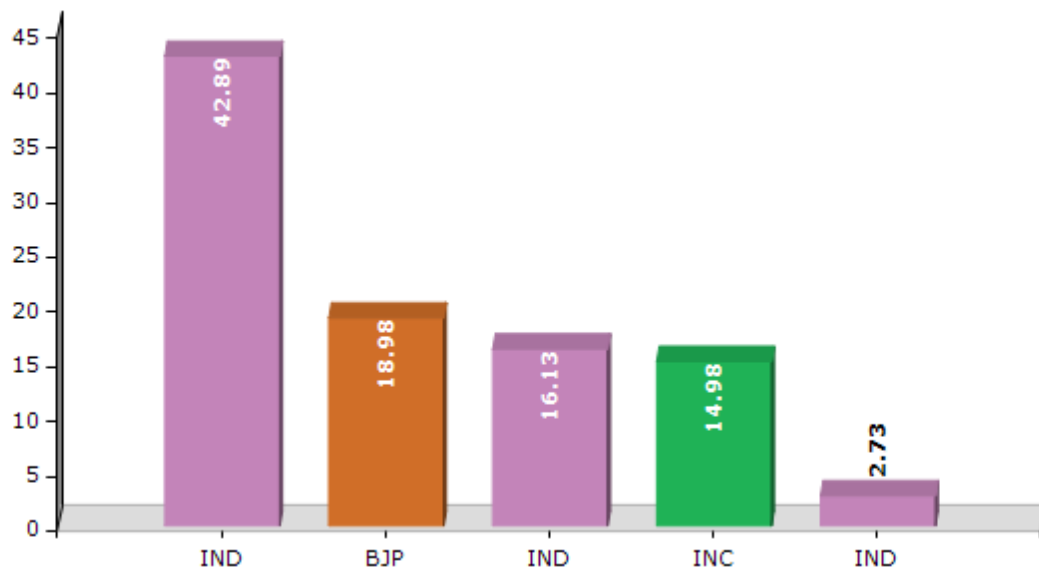
Note : AE : Assembly Election, PE : Assembly Segment of Parliamentary Election

Historical Summary Election Results

Summary Result of Assembly Election - 2016

Candidate Name	Party	Votes	Votes %
Bhubon Pegu	IND	88441	42.89
Aswini Pait	BJP	39148	18.98
Satho Basumatary	IND	33265	16.13
Sushil Pegu	INC	30890	14.98
Lenindra Kumar Doley	IND	5625	2.73
Hitesh Deori	IND	2290	1.11
Bhupen Narah	IND	2120	1.03
Janki Kumar Pegu	IND	1519	0.74
Naren Sonowal	IND	1068	0.52
	NOTA	1850	0.9

Votes Percentage of Top Parties - 2016



Polling Station Level Election Results

Number and Name of Polling Stations (PS) (2016)

Number
of Polling
Stations

Name of Polling Stations

1 Kabu Chapori L.P. School Rn 1

2 Kabu Chapori L.P. School Rn 2

3 Kabu Chapori L.P. School Rn 3

4 Purana Jelem L.P. School

5 Kemi L.P. School

6 Sirung L.P. School

7 Jelem L.P. School Rn 1

8 Torajan L.P. School

9 Jelem L.P. School Rn 2

10 Mahmara L.P. School Rn 1

11 Mahmara L.P. School Rn 2

12 Udaypur L.P. School

13 Bahir Jonai L.P. School Rn 1

14 Bahir Jonai L.P. School Rn 2

15 Bahir Silai L.P. School

16 Nahar Silai L.P. School

17 Luhijan L.P. School Rn 1

18 Luhijan L.P. School Rn 2

19 Bera Chapori L.P. School Rn 1

20 Bera Chapori L.P. School Rn 2

21 Jonai Bazar L.P. School Rn 1

Number
of Polling
Stations

Name of Polling Stations

22 Jonai Town Hindi L.P. School

23 Jonai Bazar L.P. School Rn 2

24 Jonai Bazar L.P. School Rn 3

25 Jonai Higher Sec. School Rn 1

26 Jonai Higher Sec. School Rn 2

27 Jonai Higher Sec. School Rn 3

28 Nepali Basti L.P. School Rn 1

29 Migom Dolung L.P. School

30 Nepali Basti L.P. School Rn 2

31 Nepali Basti L.P. School Rn 3

32 Murkong Selek Balika Vidyalaya Rn 1

33 Murkong Selek Balika Vidyalaya Rn 2

34 Murkong Selek Balika Vidyalaya Rn 3

35 No. 3 Rayang L.P. School

36 Rayang Balijan L.P. School

37 Junbar L.P. School Rn 1

38 Junbar L.P. School Rn 2

39 Rayang Ratkey L.P. School

40 Rayang Kuli L.P. School

41 Hilikhaguri L.P. School

42 Amritpur L.P. School Rn 1

Contd....

Polling Station Level Election Results

Polling Station-wise Votes Secured by Overall Top Five Parties in Jonai Assembly in Assembly Election (AE) under Lakhimpur Parliamentary Constituency in Assam (2016)

Number of Polling Station	Winner - Bhubon Pegu (IND)	Runner-up - Aswini Pait (BJP)	3rd - Satho Basumatary (IND)	4th - Sushil Pegu (INC)	5th - Lenindra Kumar Doley (IND)	NOTA	Other	Total Votes Secured
36	214	248	152	145	11	32	64	866
37	220	140	96	60	12	8	30	566
38	427	32	110	132	16	7	29	753
39	327	92	114	112	59	9	56	769
40	590	52	8	97	27	13	26	813
41	101	19	255	42	16	7	39	479
42	384	95	24	27	5	4	9	548
43	492	96	20	56	44	3	19	730
44	467	119	12	54	75	7	42	776
45	453	42	4	36	13	2	14	564
46	444	78	3	67	7	3	10	612
47	518	55	0	64	11	6	3	657
48	551	78	10	28	8	3	18	696
49	651	49	3	93	36	11	31	874
50	598	81	7	47	22	5	25	785
51	184	74	206	80	6	5	29	584
52	371	13	8	33	25	0	8	458
53	516	46	207	61	40	5	41	916
54	628	82	9	42	15	3	14	793
55	798	60	1	37	20	6	10	932
56	395	60	8	101	13	5	11	593
57	607	84	15	144	19	8	18	895
58	534	137	6	157	29	5	13	881
59	353	32	9	151	12	1	16	574
60	593	52	10	95	15	8	8	781
61	507	134	36	95	7	9	19	807
62	417	73	7	97	8	3	6	611
63	276	47	113	54	10	5	25	530
64	276	20	198	47	5	2	17	565
65	590	93	217	104	20	2	25	1051
66	324	47	8	163	15	1	13	571
67	376	44	27	117	5	7	10	586
68	504	117	19	76	8	10	22	756
69	476	79	18	80	19	4	24	700
70	359	61	26	124	23	3	31	627

Contd....

Polling Station Level Election Results

Winner, Runner-up and 3rd Party Position & Winning Margin According to Polling Stations in Jonai Assembly in Assembly Election (AE) under Lakhimpur Parliamentary Constituency in Assam (2016)

Polling Station Number	Winner Party	Winner Votes (%)	Runner-up Party	Runner-up Votes (%)	Winning Margin Votes (%)	Third Party	Third Party Votes (%)	Other Votes (%)
71	IND (BP)	457 (63.47)	BJP	119 (16.53)	338 (46.94)	INC	113 (15.69)	31 (4.31)
72	IND (BP)	584 (65.62)	INC	148 (16.63)	436 (48.99)	BJP	82 (9.21)	76 (8.54)
73	IND (BP)	586 (65.26)	INC	123 (13.7)	463 (51.56)	IND (SB)	57 (6.35)	132 (14.7)
74	IND (BP)	312 (57.04)	INC	94 (17.18)	218 (39.86)	IND (SB)	51 (9.32)	90 (16.45)
75	IND (BP)	437 (74.83)	INC	67 (11.47)	370 (63.36)	IND (SB)	36 (6.16)	44 (7.53)
76	IND (BP)	539 (77.78)	INC	89 (12.84)	450 (64.94)	BJP	35 (5.05)	30 (4.33)
77	IND (BP)	466 (78.58)	INC	44 (7.42)	422 (71.16)	BJP	40 (6.75)	43 (7.25)
78	IND (BP)	495 (74.21)	INC	98 (14.69)	397 (59.52)	BJP	43 (6.45)	31 (4.65)
79	IND (BP)	160 (53.33)	IND (SB)	75 (25)	85 (28.33)	INC	24 (8)	41 (13.67)
80	IND (BP)	391 (56.91)	INC	220 (32.02)	171 (24.89)	BJP	48 (6.99)	28 (4.08)
81	IND (BP)	307 (68.22)	INC	89 (19.78)	218 (48.44)	BJP	44 (9.78)	10 (2.22)
82	IND (BP)	643 (77.75)	INC	89 (10.76)	554 (66.99)	BJP	43 (5.2)	52 (6.29)
83	IND (BP)	320 (41.56)	BJP	174 (22.6)	146 (18.96)	IND (SB)	149 (19.35)	127 (16.49)
84	IND (BP)	342 (62.18)	IND (SB)	80 (14.55)	262 (47.63)	INC	66 (12)	62 (11.27)
85	INC	282 (33.69)	IND (BP)	240 (28.67)	42 (5.02)	BJP	146 (17.44)	169 (20.19)
86	IND (BP)	206 (45.18)	INC	108 (23.68)	98 (21.5)	BJP	91 (19.96)	51 (11.18)
87	IND (BP)	197 (37.38)	INC	139 (26.38)	58 (11)	BJP	93 (17.65)	98 (18.6)
88	IND (BP)	229 (44.81)	BJP	94 (18.4)	135 (26.41)	INC	88 (17.22)	100 (19.57)
89	IND (SB)	226 (62.6)	INC	44 (12.19)	182 (50.41)	IND (BP)	37 (10.25)	54 (14.96)
90	IND (BP)	237 (46.56)	IND (SB)	114 (22.4)	123 (24.16)	INC	61 (11.98)	97 (19.06)
91	IND (SB)	301 (37.91)	IND (BP)	210 (26.45)	91 (11.46)	INC	184 (23.17)	99 (12.47)
92	IND (BP)	244 (41.57)	IND (SB)	111 (18.91)	133 (22.66)	BJP	81 (13.8)	151 (25.72)
93	IND (BP)	382 (64.42)	INC	111 (18.72)	271 (45.7)	BJP	52 (8.77)	48 (8.09)
94	IND (BP)	438 (61.78)	IND (SB)	115 (16.22)	323 (45.56)	BJP	50 (7.05)	106 (14.95)
95	IND (SB)	509 (75.3)	IND (BP)	71 (10.5)	438 (64.8)	IND (HD)	21 (3.11)	75 (11.09)
96	IND (SB)	395 (76.7)	IND (BP)	40 (7.77)	355 (68.93)	BJP	17 (3.3)	63 (12.23)
97	IND (BP)	283 (48.29)	BJP	211 (36.01)	72 (12.28)	INC	69 (11.77)	23 (3.92)
98	IND (BP)	278 (44.98)	BJP	201 (32.52)	77 (12.46)	INC	75 (12.14)	64 (10.36)
99	IND (BP)	433 (64.05)	INC	110 (16.27)	323 (47.78)	BJP	84 (12.43)	49 (7.25)
100	IND (BP)	477 (72.6)	BJP	70 (10.65)	407 (61.95)	INC	58 (8.83)	52 (7.91)
101	IND (BP)	232 (36.25)	BJP	128 (20)	104 (16.25)	IND (SB)	121 (18.91)	159 (24.84)
102	IND (BP)	355 (65.26)	BJP	103 (18.93)	252 (46.33)	INC	38 (6.99)	48 (8.82)
103	IND (SB)	390 (61.51)	IND (BP)	123 (19.4)	267 (42.11)	BJP	39 (6.15)	82 (12.93)
104	IND (SB)	198 (36)	BJP	130 (23.64)	68 (12.36)	IND (BP)	106 (19.27)	116 (21.09)
105	IND (SB)	333 (48.61)	IND (BP)	124 (18.1)	209 (30.51)	BJP	123 (17.96)	105 (15.33)

Contd....

Socio-Economic Amenities - Rural

Access to Education Facilities

Particulars	Number of Villages (% of Population)				
	Available	Not Available	If Not Available (Distance of Nearest Facility)		
			A	B	C
Govt. Primary School	550 (86)	192 (14)	49 (2)	4 (0)	1 (0)
Private Primary School	273 (43)	469 (57)	13 (1)	1 (0)	0 (0)
Govt. Middle School	152 (32)	590 (68)	213 (22)	54 (5)	7 (1)
Private Middle School	40 (12)	702 (88)	148 (19)	39 (3)	30 (3)
Govt. Secondary School	55 (13)	687 (87)	214 (28)	143 (16)	77 (6)
Private Secondary School	63 (13)	679 (87)	136 (19)	41 (6)	9 (1)
Govt. Senior Secondary School	16 (4)	726 (96)	163 (24)	233 (31)	213 (23)
Private Senior Secondary School	10 (3)	732 (97)	47 (6)	42 (6)	19 (4)
Govt. Arts and Science Degree College	4 (1)	738 (99)	69 (11)	174 (24)	324 (39)
Private Arts and Science Degree College	14 (3)	728 (97)	32 (4)	64 (10)	62 (7)
Govt. Engineering College	0 (0)	742 (100)	0 (0)	0 (0)	742 (100)
Private Engineering College	0 (0)	742 (100)	0 (0)	0 (0)	0 (0)
Govt. Medicine College	0 (0)	742 (100)	0 (0)	4 (0)	738 (100)
Private Medicine College	0 (0)	742 (100)	0 (0)	0 (0)	0 (0)
Govt. Management Institute	0 (0)	742 (100)	0 (0)	1 (0)	731 (99)
Private Management Institute	0 (0)	742 (100)	0 (0)	3 (0)	4 (1)
Govt. Polytechnic	0 (0)	742 (100)	1 (0)	0 (0)	649 (89)
Private Polytechnic	0 (0)	742 (100)	0 (0)	1 (0)	1 (0)
Govt. Vocational Training School/ITI	0 (0)	742 (100)	0 (0)	4 (0)	644 (88)
Private Vocational Training School/ITI	0 (0)	742 (100)	0 (0)	0 (0)	0 (0)
Govt. Non Formal Training Centre	2 (1)	740 (99)	4 (1)	21 (2)	453 (64)
Private Non Formal Training Centre	8 (1)	734 (99)	5 (0)	1 (0)	2 (0)
Govt. School For Disabled	0 (0)	742 (100)	0 (0)	3 (0)	621 (86)
Private School For Disabled	0 (0)	742 (100)	0 (0)	0 (0)	1 (0)
Government Others	1 (0)	741 (100)	0 (0)	0 (0)	2 (0)
Private Others	0 (0)	742 (100)	0 (0)	0 (0)	0 (0)

Note : Distance A : Less than 5 km; B : Between 5-10 km; C : 10+ km.; Source : Data Analysis is based on 2011 Census.

DISCLAIMER

The Terms of Use and Disclaimer of Datanet India Private Limited (hereinafter referred to as "Datanet") for use of this analysis report of **Jonai Assembly Constituency (Jonai Vidhan Sabha)** :-

1. **Assembly Factbook™** is a Registered Trade Mark owned by Datanet.
2. All the maps are sketched and graphical representation only and have not been drawn to the scale and also not to represent the actual geographical area or boundary of the unit.
3. The data for the aforesaid analysis is based on authentic sources and has been culled from the various publications of Census, CSO and NSSO for district and block level data, various central and state government departments, Central & State Elections Commissions and the concerned Returning Officers' releases, Electoral Rolls, Election results and allied publications, internal assessment, surveys, estimates and analysis. Therefore, certain adjustment of data at micro level may have been done to arrive closer to the macro data.
4. Data have been provided on an "As Is" and "As AVAILABLE" basis
5. The colours shown in the maps or diagram and charts of a particular party, alliance or AC are indicative and do not represent them.
6. This publication which includes maps, sheets, graphs and data would be the property under copyright of Datanet only. The user may use these for its internal study, analysis and research purposes. It's public display, re-selling or any commercial uses by the user are not allowed.
7. Datanet has taken due care and caution in compilation and processing of data and allied information, but does not guarantee the accuracy, adequacy or completeness of any information/analysis and will be not responsible for any errors or omissions or for the results obtained from the use of such information/analysis.
8. All the contents for the publication have been culled from various authentic sources and Datanet reasonably believes such sources to be reliable, but does not make any representations, express or implied as to the accuracy or fitness of use of such information. The information or contents of the information/analysis do not constitute advice and should not be relied upon in making (or refraining from making) any decision. Any reliance placed upon the information provided by Datanet is the sole responsibility and strictly at the user's risk.
9. In no event will Datanet be liable for any damages (including, without limitation, damages for loss of business projects, or loss of profits) arising in contract, tort or otherwise from the use of or inability to use any of its contents, or from any action taken (or refrained from being taken) as a result of using the analysis or any of its contents. Datanet its directors, owners, editors, officials, employees, distributor and agents or any associate will not be liable for any errors in the information contained or any consequences arising from the use of the contents of the provided information/analysis.
10. If any provision of these terms and conditions is held invalid or illegal or unenforceable for any reason by any court of competent jurisdiction, such provision shall be severed and the remainder of provisions of the terms and conditions shall continue in full force and effect as if the Term of Use had been executed with the invalid, illegal or unenforceable provision eliminated.
11. If there are any discrepancies in the information provided, please bring it to attention of Datanet for suitable rectification measures.

Buy Online This Complete Book At
Datanet India eBooks Store

www.indiastatpublications.com

or go directly at

[http://www.indiastatpublications.com/
Assembly_factbook/Assam/Lakhimpur/ Jonai](http://www.indiastatpublications.com/Assembly_factbook/Assam/Lakhimpur/Jonai)

 **indiastat**elections

