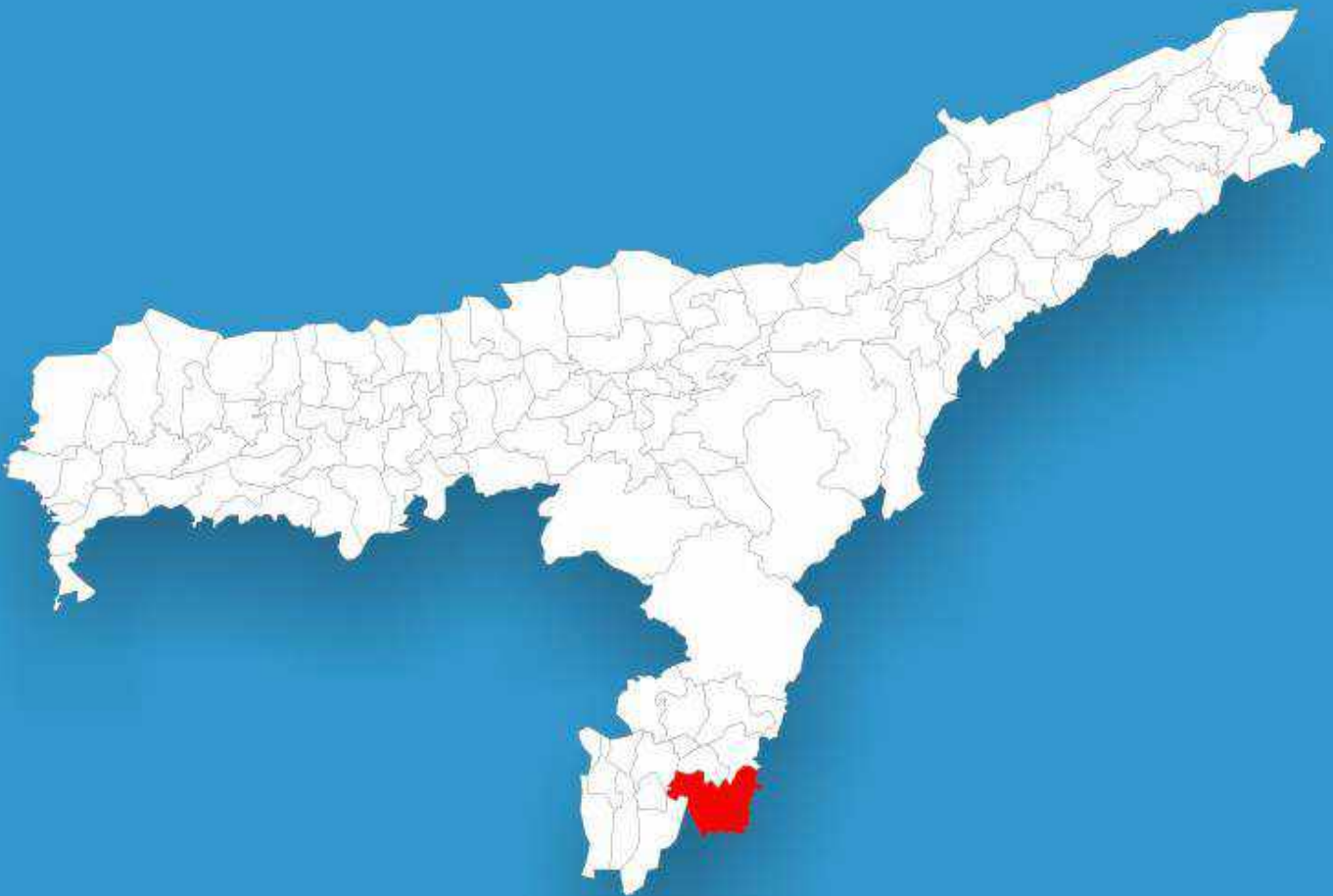




Assam

Assembly Factbook™

Dholai Assembly Constituency



Key Electoral Data of Dholai
Assembly Constituency (Vidhan Sabha)

Assam

Assembly Factbook™

Dholai Assembly Constituency



Dholai Vidhan Sabha

Editor & Director

Dr. R.K. Thukral

Research Editor

Dr. Shafeeq Rahman

Compiled, Researched and Published by Datanet India Pvt. Ltd.

D-100, 1st Floor,

Okhla Industrial Area, Phase-I,
New Delhi- 110020.

Ph.: 91-11- 43580781-84

Email : support@indiastatpublications.com

Website : www.indiastatelections.com

Online Book Store :

www.indiastatpublications.com

Report No. : AFB/AS-011-0125

ISBN : 978-93-5313-354-2

First Edition : January, 2018

Eighth Updated Edition : January, 2025

Price : Rs. 11500/-

US\$ 310

© Datanet India Pvt. Ltd.

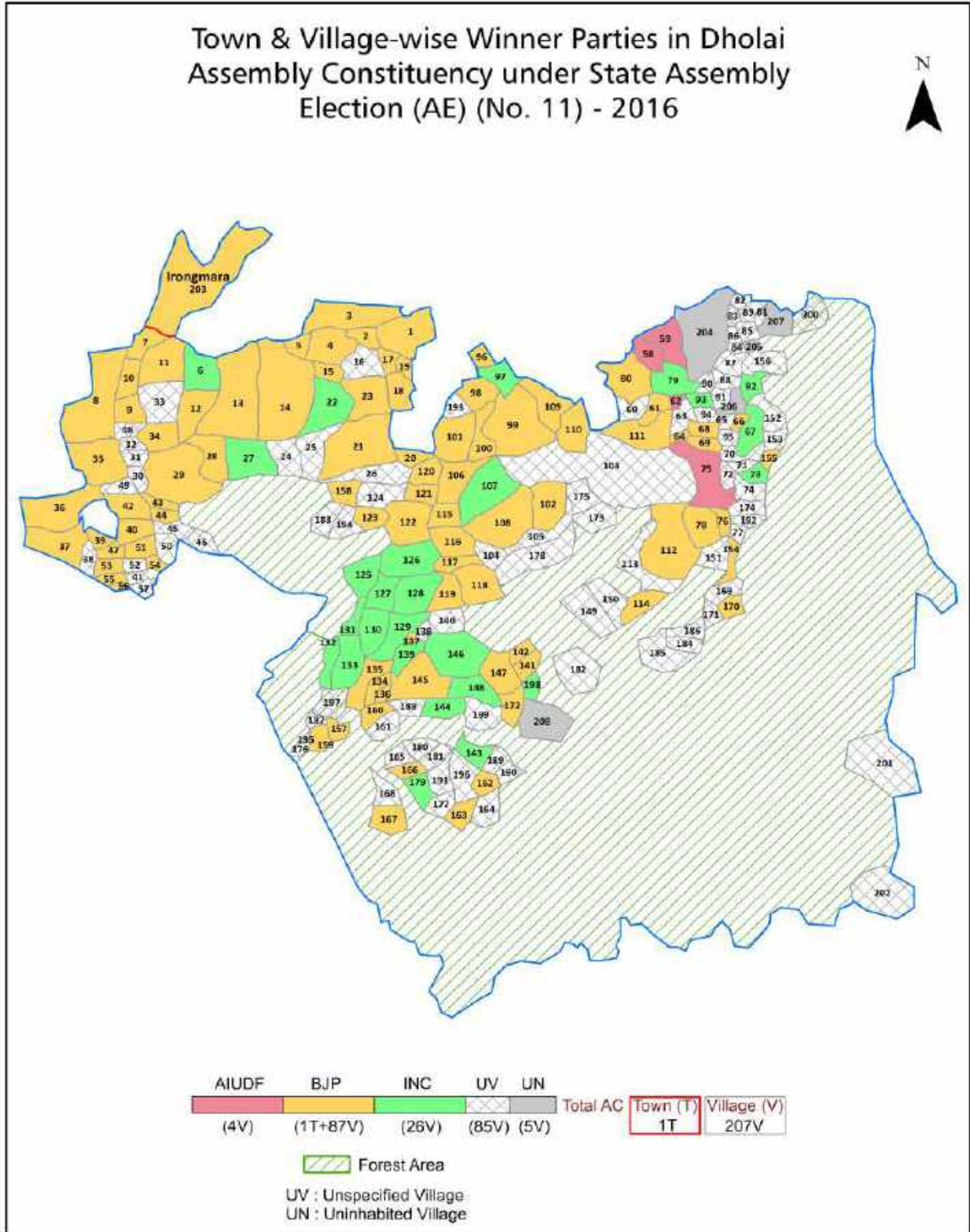
All rights reserved. No part of this book may be reproduced, stored in a retrieval system or transmitted in any form or by any means, mechanical photocopying, photographing, scanning, recording or otherwise without the prior written permission of the publisher. Please refer to Disclaimer at page no. 163 for the use of this publication.

Printed in India

Contents

No.	Particulars	Page No.
	Introduction	
1	Assembly Constituency -(Vidhan Sabha) at a Glance Features of Assembly as per Delimitation Commission of India (2008)	1-2
	Location and Political Maps	
2	Location Map Boundaries of Assembly Constituency -(Vidhan Sabha in District Boundaries of Assembly Constituency under Parliamentary Constituency -(Lok Sabha) Town & Village-wise Winner Parties- 2024, 2021, 2019, 2016, 2014, 2011 and 2009	3-10
	Administrative Setup (2011)	
3	District Sub-district Towns Villages Inhabited Villages Uninhabited Villages Village Panchayat Intermediate Panchayat	11-21
	Demographics (2011)	
4	Population Households Rural/Urban Population Towns and Villages by Population Size Sex Ratio (Total & 0-6 Years) Religious Population Social Population Literacy Rate	22-23
	Electoral Features	
5	Important Dates of Last Elections Held Electors by Gender Service Electors Voters Voters Turnout Polling Stations & Average Number of Electors per Polling Station Electors by Age Group Present Elected Representatives	24-29
	Historical Summary Election Results	
6	Vote Share of Major Parties Winning Margin (Number & Percentage Polarity of Parties Summary Result of Assembly Segment of Parliamentary Elections 2024, 2019, 2014, 2009, 2004 and 1999 Summary Result of Assembly Elections 2021, 2016, 2011, 2006, 2001, 1996, 1991, 1985, 1983, 1978, 1972 and 1967	30-50
	Polling Station Level Election Results	
7	Name and Number of Polling Station 2024, 2021, 2019, 2016, 2014, 2011 and 2009 Polling Station-wise Electors, Voters & Voters Turnout 2024, 2021, 2019, 2016, 2014, 2011 and 2009 Polling Station wise Elections Results 2024, 2021, 2019, 2016, 2014, 2011 and 2009	51-142
	Share of Assembly Constituency	
8	Share of Assembly Constituency -(Vidhan Sabha) in State, District and Parliamentary Constituency -(Lok Sabha)	143
	Socio-Economic Amenities (2011)	
9	Access to Administrative Units Agricultural, Manufacturing and Industrial Commodities Demographic Indicators Education Health & Manpower Drinking Water Supply Sanitation Entertainment and Recreations Infrastructure Power Food Allocation Distribution and Marketing of Agriculture Commodities Infrastructure Transport and Road Infrastructure Communication Banking and Financial Services Land Use Irrigation Source	145-159
10	Abbreviation & Sources	161
11	Disclaimer	163

Location & Political Map



Administrative Setup

List of Village Panchayat & Intermediate Panchayat (Block) Name - 2011

Village Name	Village Panchayat Name	Intermediate Panchayat Name
Anandakhal	Moniarkhal Gp	Palonghat
Anandakhal F.V.	-	Narsingpur
Aradhanpur	-	Narsingpur
Arjanpur	-	Narsingpur
Bagewallah F.V.	-	Narsingpur
Bag-O-Bahar Pt I	Bagbahar G.P	Barjalenga
Bag-O-Bahar Pt II	Bagabahar G.P	Barjalenga
Bag-O-Bahar Pt III	Bagbahar	Barjalenga
Bag-O-Bahar Pt IV	Bagbahar G.P	Barjalenga
Bag-O-Bahar Pt V	Bagbabhar G.P	Barjalenga
Bag-O-Bahar T.E.	Bagbahar G.P	Barjalenga
Baluchari F.V.	Nayabil G.P	Barjalenga
Bangram	-	Narsingpur
Bar Jalenga Pt II	Barjelenga	Barjalenga
Barjalenga Pt I	Borjelenga	Barjalenga
Barjalenga Pt III	Puthikhal	Narsingpur
Barjalenga Pt IV	Pitikhal G.P	Narsingpur
Barjalenga Pt IX (Pt XI)	Puthi Khal G.P	Narsingpur
Barmannagar F.V.	-	Narsingpur
Bharampur	-	Palonghat
Bhubandahar Pt I	-	Palonghat
Bhubandahar Pt II	-	Palonghat
Bhubandhar	-	Narsingpur
Bhubanhill F.V.	-	Palonghat
Bhubankhal	-	Palonghat
Bhubankhal F.V.	-	Palonghat
Bhubankhal Pt I F.V.	Bhuban Hill G.P	Palonghat
Bhubannagar Pt I	-	Palonghat
Bhubannagar Pt II	-	Palonghat

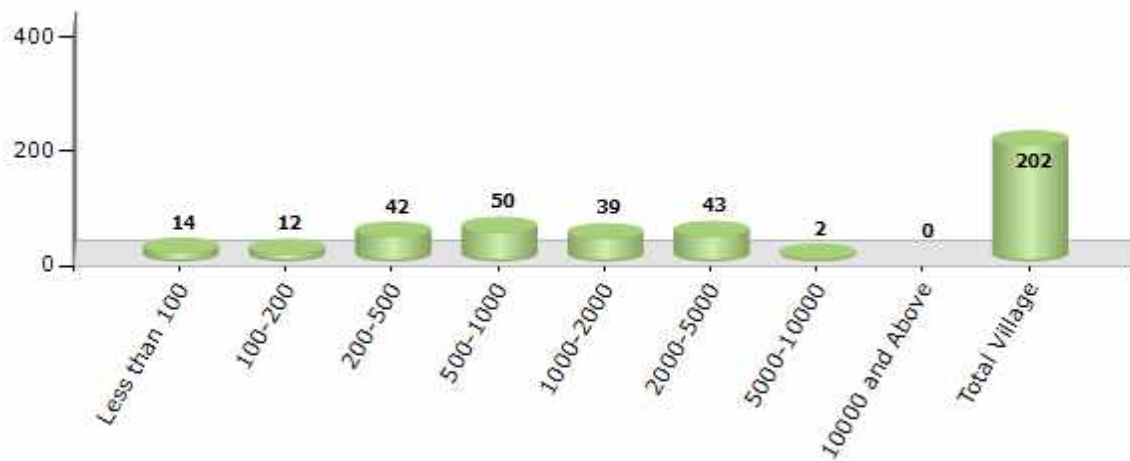
Contd....

Demographics

Number of Villages by Population Size - 2011

Less than 100	100-200	200-500	500-1000	1000-2000	2000-5000	5000-10000	10000 and Above	Total Village
14	12	42	50	39	43	2	0	202

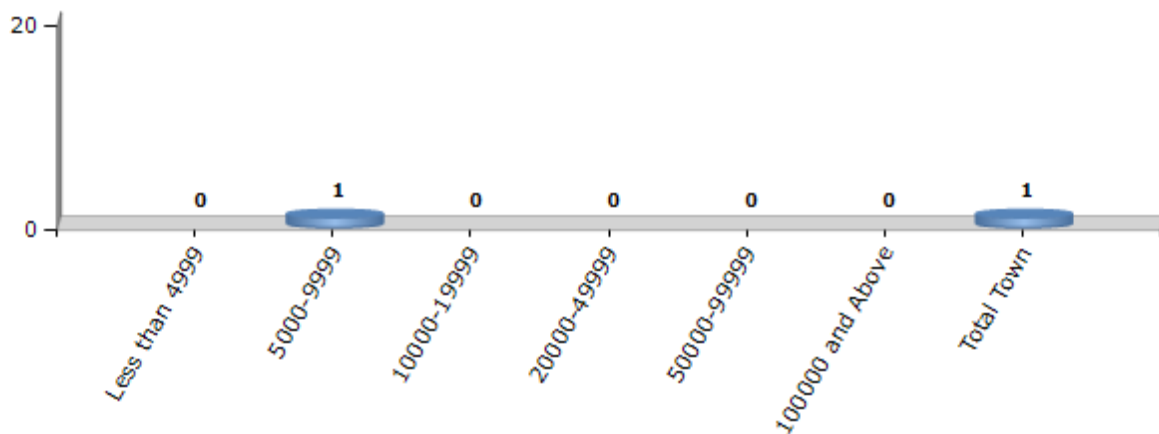
Number of Villages by Population Size - 2011



Number of Towns by Population Size - 2011

Less than 4999	5000-9999	10000-19999	20000-49999	50000-99999	100000 and Above	Total Town
0	1	0	0	0	0	1

Number of Towns by Population Size - 2011

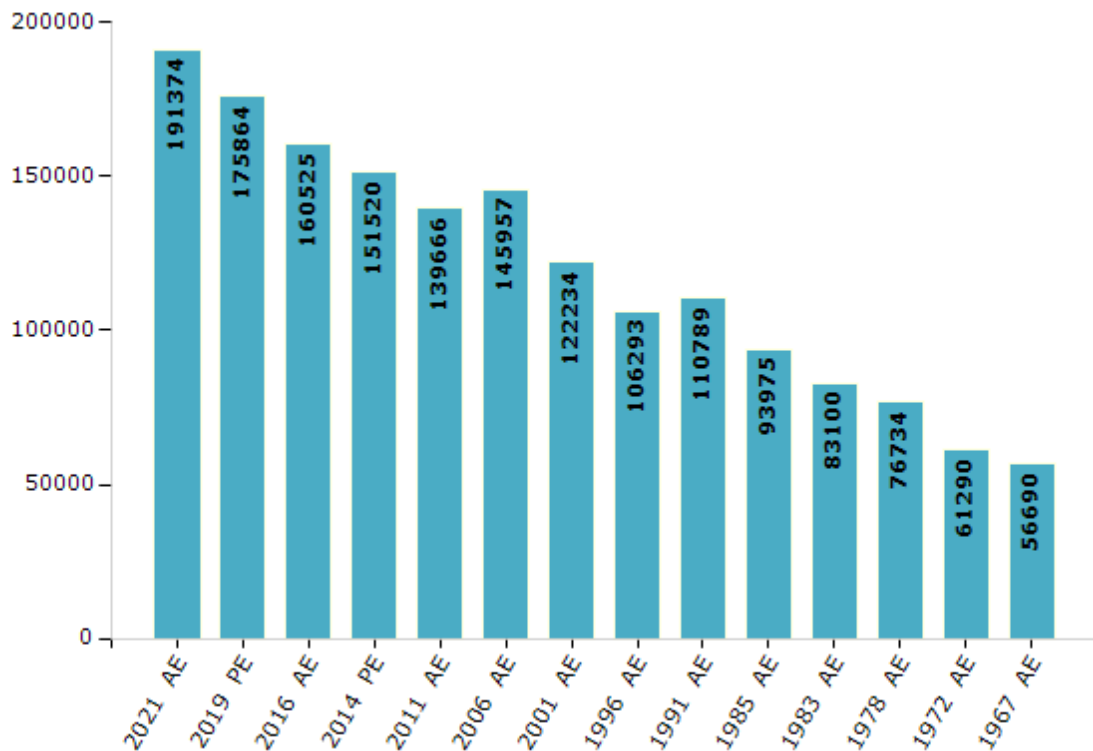


Electoral Features

Electors by Male & Female

Year	Male	Female	Others	Total	Year	Male	Female	Others	Total
2021 AE	98888	92485	1	191374	1996 AE	55497	50796	-	106293
2019 PE	92725	83137	2	175864	1991 AE	56579	54210	-	110789
2016 AE	85614	74911	0	160525	1985 AE	51037	42938	-	93975
2014 PE	80734	70784	2	151520	1983 AE	44577	38523	-	83100
2011 AE	74128	65538	0	139666	1978 AE	41780	34954	-	76734
2009 PE	-	-	-	-	1972 AE	32624	28666	-	61290
2006 AE	75678	70279	-	145957	1967 AE	-	-	-	56690
2004 PE	-	-	-	-	1962 AE	-	-	-	-
2001 AE	63995	58239	-	122234	1957 AE	-	-	-	-
1999 PE	-	-	-	-	1952 AE	-	-	-	-

Number of Electors



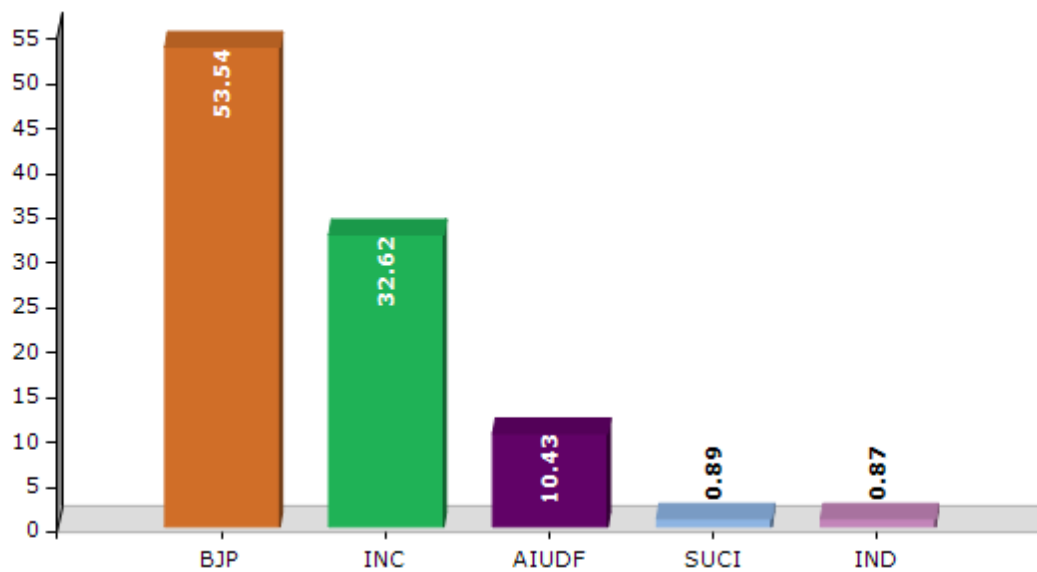
Note : AE : Assembly Election, PE : Assembly Segment of Parliamentary Election

Historical Summary Election Results

Summary Result of Assembly Election - 2016

Candidate Name	Party	Votes	Votes %
Parimal Suklabaidya	BJP	68694	53.54
Girindra Mallik	INC	41857	32.62
Lalta Prosad Mala	AIUDF	13382	10.43
Gour Chandra Das	SUCI	1146	0.89
Nihar Ranjan Das	IND	1114	0.87
	NOTA	2110	1.64

Votes Percentage of Top Parties - 2016



Polling Station Level Election Results

Number and Name of Polling Stations (PS) (2016)

Number of Polling Stations	Name of Polling Stations	Number of Polling Stations	Name of Polling Stations
1	118 No. Irongmara Buniyadi Vidyalaya (Room 1)	22	442 No. Bagbahar Vivekananda Nimno Prathomik Vidyalaya
2	118 No. Irongmara Buniyadi Vidyalaya (Room 2)	23	662 No. New Bagbahar Nimno Prathomik Vidyalaya
3	118 No. Irongmara Buniyadi Vidyalaya (Room 3)	24	739 No. Bagbahar Nimno Prathomik Vidyalaya (Room 1)
4	1372 No. Harinagar Netaji Nimno Prathomik Vidyalaya (Room 1)	25	739 No. Bagbahar Nimno Prathomik Vidyalaya (Room 2)
5	1372 No. Harinagar Netaji Nimno Prathomik Vidyalaya (Room 2)	26	741 No. Purba Nayagaon Nimno Prathomik Vidyalaya (Room 3)
6	Irongmara Bapuji L. P. School (Room 1)	27	309 No. Pratappur Nimno Prathomik Vidyalaya
7	Irongmara Bapuji L. P. School (Room 2)	28	741 No. Purba Nayagaon Nimno Prathomik Vidyalaya (Room 1)
8	P. C. Barjalenga High School (Room 1)	29	741 No. Purba Nayagaon Nimno Prathomik Vidyalaya (Room 2)
9	P.C. Barjalenga High School (Room 2)	30	299 No. Bondhon Goala Nimno Prathomik Vidyalaya
10	609 No. Chotojalenga Nimno Prathomik Vidyalaya (Room 1)	31	Baluchori F. V. Nimno Prathomik Vidyalaya .
11	609 No. Chotojalenga Nimno Prathomik Vidyalaya (Room 3)	32	Brojokishore Dowarbond Uccha Engreji Vidyalaya (Room 1)
12	609 No. Chotojalenga Nimno Prathomik Vidyalaya Room 2)	33	Brojokishore Dowarbond Uccha Engreji Vidyalaya (Room 2)
13	Chotojalenga Grant Prothom Nimno Prathomik Vidyalaya (Room 1)	34	Brojokishore Dowarbond Uccha Engreji Vidyalaya (Room 3)
14	Chotojalenga Grant Prothom Nimno Prathomik Vidyalaya (Room 3)	35	Borjalenga Modhyo Bonga Vidalaya (Room 1)
15	Chotojalenga Grant Prothom Nimno Prathomik Vidyalaya (Room 2)	36	Borjalenga Modhyo Bonga Vidalaya (Room 2)
16	660 No. Chotojalenga Cha-Bagan Nimno Prathomik Vidyalaya (Room 1)	37	Mohon Lal Modhyo Engrejee Vidyalaya (Room 1)
17	660 No. Chotojalenga Cha-Bagan Nimno Prathomik Vidyalaya (Room 2)	38	Mohon Lal Modhyo Engrejee Vidyalaya (Room 2)
18	27 No. Dhowarbond Cha-Bagan Nimno Prathomik Vidyalaya (Room 1)	39	Alenpur Cha Bagan Nach Ghar
19	27 No. Dhowarbond Cha-Bagan Nimno Prathomik Vidyalaya (Room 2)	40	26 No. Alenpur Cha Bagan Nimno Prathomik Vidyalaya
20	32 No. Bagbahar Bagan Nimno Prathomik Vidyalaya (Room 1)	41	256 No. Taranathpur Nimno Prathomik Vidyalaya
21	32 No. Bagbahar Bagan Nimno Prathomik Vidyalaya (Room 2)	42	598 No. Gopinathpur Nimno Prathomik Vidyalaya

Contd....

Polling Station Level Election Results

Polling Station-wise Votes Secured by Overall Top Five Parties in Dholai Assembly in Assembly Election (AE) under Silchar Parliamentary Constituency in Assam (2016)

Number of Polling Station	Winner - Parimal Suklabaidya (BJP)	Runner-up - Girindra Mallik (INC)	3rd - Lalta Prosad Mala (AIUDF)	4th - Gour Chandra Das (SUCI)	5th - Nihar Ranjan Das (IND)	NOTA	Other	Total Votes Secured
36	495	213	8	11	18	28	0	773
37	315	378	13	7	8	14	0	735
38	292	269	7	4	2	12	0	586
39	484	195	17	5	6	10	0	717
40	592	128	21	16	18	36	0	811
41	271	403	12	4	7	9	0	706
42	403	340	18	8	13	21	0	803
43	690	291	35	7	15	31	0	1069
44	567	205	22	9	14	19	0	836
45	210	47	5	7	11	3	0	283
46	583	218	19	10	4	11	0	845
47	341	165	11	4	3	13	0	537
48	695	182	29	11	13	14	0	944
49	700	118	4	1	3	7	0	833
50	632	208	37	21	10	15	0	923
51	548	225	21	2	12	14	0	822
52	197	230	159	7	4	17	0	614
53	267	172	72	2	1	3	0	517
54	776	100	6	0	7	11	0	900
55	719	143	17	5	5	6	0	895
56	112	467	240	7	14	22	0	862
57	354	195	39	14	19	0	0	621
58	460	325	23	8	5	11	0	832
59	558	222	23	7	13	24	0	847
60	365	344	22	12	12	32	0	787
61	614	155	9	1	0	4	0	783
62	354	65	9	4	0	7	0	439
63	711	109	4	3	2	6	0	835
64	612	178	5	3	3	6	0	807
65	381	137	3	0	3	8	0	532
66	407	128	2	2	1	1	0	541
67	652	275	7	8	3	8	0	953
68	699	277	23	1	7	13	0	1020
69	334	185	4	1	3	3	0	530
70	461	344	20	4	7	14	0	850

Contd....

Polling Station Level Election Results

Winner, Runner-up and 3rd Party Position & Winning Margin According to Polling Stations in Dholai Assembly in Assembly Election (AE) under Silchar Parliamentary Constituency in Assam (2016)

Polling Station Number	Winner Party	Winner Votes (%)	Runner-up Party	Runner-up Votes (%)	Winning Margin Votes (%)	Third Party	Third Party Votes (%)	Other Votes (%)
71	INC	466 (44.68)	BJP	312 (29.91)	154 (14.77)	AIUDF	242 (23.2)	23 (2.21)
72	INC	415 (43.32)	BJP	304 (31.73)	111 (11.59)	AIUDF	193 (20.15)	46 (4.8)
73	INC	529 (51.06)	AIUDF	324 (31.27)	205 (19.79)	BJP	137 (13.22)	46 (4.44)
74	INC	135 (42.86)	AIUDF	96 (30.48)	39 (12.38)	BJP	64 (20.32)	20 (6.35)
75	INC	433 (42.96)	AIUDF	378 (37.5)	55 (5.46)	BJP	142 (14.09)	55 (5.46)
76	INC	317 (36.95)	BJP	292 (34.03)	25 (2.92)	AIUDF	218 (25.41)	31 (3.61)
77	AIUDF	432 (46.91)	INC	305 (33.12)	127 (13.79)	BJP	167 (18.13)	17 (1.85)
78	INC	510 (57.95)	AIUDF	259 (29.43)	251 (28.52)	BJP	90 (10.23)	21 (2.39)
79	INC	275 (52.88)	BJP	113 (21.73)	162 (31.15)	AIUDF	102 (19.62)	30 (5.77)
80	INC	189 (52.79)	BJP	77 (21.51)	112 (31.28)	AIUDF	72 (20.11)	20 (5.59)
81	INC	565 (53.55)	AIUDF	275 (26.07)	290 (27.48)	BJP	175 (16.59)	40 (3.79)
82	INC	345 (46.12)	AIUDF	211 (28.21)	134 (17.91)	BJP	162 (21.66)	30 (4.01)
83	INC	426 (52.66)	AIUDF	226 (27.94)	200 (24.72)	BJP	129 (15.95)	28 (3.46)
84	INC	482 (51.61)	AIUDF	277 (29.66)	205 (21.95)	BJP	121 (12.96)	54 (5.78)
85	INC	344 (40.81)	AIUDF	334 (39.62)	10 (1.19)	BJP	124 (14.71)	41 (4.86)
86	INC	539 (55.68)	BJP	208 (21.49)	331 (34.19)	AIUDF	190 (19.63)	31 (3.2)
87	BJP	478 (71.88)	INC	152 (22.86)	326 (49.02)	AIUDF	20 (3.01)	15 (2.26)
88	BJP	349 (44.29)	INC	269 (34.14)	80 (10.15)	AIUDF	148 (18.78)	22 (2.79)
89	BJP	529 (69.7)	INC	204 (26.88)	325 (42.82)	AIUDF	10 (1.32)	16 (2.11)
90	AIUDF	359 (38.98)	INC	294 (31.92)	65 (7.06)	BJP	234 (25.41)	34 (3.69)
91	BJP	465 (74.52)	INC	122 (19.55)	343 (54.97)	AIUDF	21 (3.37)	16 (2.56)
92	BJP	734 (80.75)	INC	158 (17.38)	576 (63.37)	AIUDF	10 (1.1)	7 (0.77)
93	BJP	444 (74.62)	INC	141 (23.7)	303 (50.92)	AIUDF	5 (0.84)	5 (0.84)
94	BJP	470 (56.09)	INC	236 (28.16)	234 (27.93)	AIUDF	110 (13.13)	22 (2.63)
95	INC	339 (38.39)	AIUDF	267 (30.24)	72 (8.15)	BJP	247 (27.97)	30 (3.4)
96	INC	445 (61.29)	AIUDF	190 (26.17)	255 (35.12)	BJP	71 (9.78)	20 (2.75)
97	INC	259 (48.87)	AIUDF	199 (37.55)	60 (11.32)	BJP	52 (9.81)	20 (3.77)
98	INC	660 (62.74)	AIUDF	302 (28.71)	358 (34.03)	BJP	62 (5.89)	28 (2.66)
99	BJP	634 (66.74)	INC	212 (22.32)	422 (44.42)	AIUDF	79 (8.32)	25 (2.63)
100	BJP	382 (46.93)	INC	314 (38.57)	68 (8.36)	AIUDF	82 (10.07)	36 (4.42)
101	INC	591 (62.28)	AIUDF	201 (21.18)	390 (41.1)	BJP	116 (12.22)	41 (4.32)
102	BJP	408 (61.17)	INC	185 (27.74)	223 (33.43)	AIUDF	59 (8.85)	15 (2.25)
103	BJP	176 (46.32)	INC	137 (36.05)	39 (10.27)	AIUDF	48 (12.63)	19 (5)
104	BJP	329 (51.57)	INC	256 (40.13)	73 (11.44)	AIUDF	48 (7.52)	5 (0.78)
105	INC	205 (42.36)	BJP	153 (31.61)	52 (10.75)	AIUDF	112 (23.14)	14 (2.89)

Contd....

Socio-Economic Amenities - Rural

Access to Education Facilities

Particulars	Number of Villages (% of Population)				
	Available	Not Available	If Not Available (Distance of Nearest Facility)		
			A	B	C
Govt. Primary School	185 (99)	17 (1)	11 (0)	5 (0)	0 (0)
Private Primary School	27 (21)	175 (79)	0 (0)	0 (0)	0 (0)
Govt. Middle School	77 (62)	125 (38)	79 (25)	31 (8)	8 (1)
Private Middle School	11 (7)	191 (93)	0 (0)	1 (0)	0 (0)
Govt. Secondary School	31 (25)	171 (75)	67 (36)	52 (19)	43 (16)
Private Secondary School	5 (4)	197 (96)	3 (1)	0 (0)	0 (0)
Govt. Senior Secondary School	9 (8)	193 (92)	53 (35)	57 (28)	80 (27)
Private Senior Secondary School	3 (2)	199 (98)	0 (0)	0 (0)	1 (0)
Govt. Arts and Science Degree College	2 (1)	200 (99)	15 (10)	27 (20)	152 (67)
Private Arts and Science Degree College	0 (0)	202 (100)	0 (0)	4 (1)	2 (1)
Govt. Engineering College	0 (0)	202 (100)	1 (0)	5 (5)	196 (95)
Private Engineering College	0 (0)	202 (100)	0 (0)	0 (0)	0 (0)
Govt. Medicine College	0 (0)	202 (100)	1 (0)	4 (5)	197 (95)
Private Medicine College	0 (0)	202 (100)	0 (0)	0 (0)	0 (0)
Govt. Management Institute	0 (0)	202 (100)	2 (0)	9 (6)	179 (86)
Private Management Institute	1 (1)	201 (99)	2 (1)	1 (1)	8 (4)
Govt. Polytechnic	0 (0)	202 (100)	0 (0)	7 (5)	183 (91)
Private Polytechnic	0 (0)	202 (100)	0 (0)	0 (0)	0 (0)
Govt. Vocational Training School/ITI	1 (0)	201 (100)	0 (0)	6 (5)	177 (87)
Private Vocational Training School/ITI	0 (0)	202 (100)	0 (0)	1 (0)	1 (0)
Govt. Non Formal Training Centre	1 (0)	201 (100)	0 (0)	6 (5)	170 (84)
Private Non Formal Training Centre	1 (0)	201 (100)	0 (0)	0 (0)	0 (0)
Govt. School For Disabled	0 (0)	202 (100)	0 (0)	3 (2)	160 (78)
Private School For Disabled	0 (0)	202 (100)	0 (0)	0 (0)	1 (1)
Government Others	4 (4)	198 (96)	0 (0)	3 (2)	42 (16)
Private Others	4 (4)	198 (96)	0 (0)	0 (0)	0 (0)

Note : Distance A : Less than 5 km; B : Between 5-10 km; C : 10+ km.; Source : Data Analysis is based on 2011 Census.

DISCLAIMER

The Terms of Use and Disclaimer of Datanet India Private Limited (hereinafter referred to as "Datanet") for use of this analysis report of **Dholai Assembly Constituency (Dholai Vidhan Sabha)** :-

1. **Assembly Factbook™** is a Registered Trade Mark owned by Datanet.
2. All the maps are sketched and graphical representation only and have not been drawn to the scale and also not to represent the actual geographical area or boundary of the unit.
3. The data for the aforesaid analysis is based on authentic sources and has been culled from the various publications of Census, CSO and NSSO for district and block level data, various central and state government departments, Central & State Elections Commissions and the concerned Returning Officers' releases, Electoral Rolls, Election results and allied publications, internal assessment, surveys, estimates and analysis. Therefore, certain adjustment of data at micro level may have been done to arrive closer to the macro data.
4. Data have been provided on an "As Is" and "As AVAILABLE" basis
5. The colours shown in the maps or diagram and charts of a particular party, alliance or AC are indicative and do not represent them.
6. This publication which includes maps, sheets, graphs and data would be the property under copyright of Datanet only. The user may use these for its internal study, analysis and research purposes. It's public display, re-selling or any commercial uses by the user are not allowed.
7. Datanet has taken due care and caution in compilation and processing of data and allied information, but does not guarantee the accuracy, adequacy or completeness of any information/analysis and will be not responsible for any errors or omissions or for the results obtained from the use of such information/analysis.
8. All the contents for the publication have been culled from various authentic sources and Datanet reasonably believes such sources to be reliable, but does not make any representations, express or implied as to the accuracy or fitness of use of such information. The information or contents of the information/analysis do not constitute advice and should not be relied upon in making (or refraining from making) any decision. Any reliance placed upon the information provided by Datanet is the sole responsibility and strictly at the user's risk.
9. In no event will Datanet be liable for any damages (including, without limitation, damages for loss of business projects, or loss of profits) arising in contract, tort or otherwise from the use of or inability to use any of its contents, or from any action taken (or refrained from being taken) as a result of using the analysis or any of its contents. Datanet its directors, owners, editors, officials, employees, distributor and agents or any associate will not be liable for any errors in the information contained or any consequences arising from the use of the contents of the provided information/analysis.
10. If any provision of these terms and conditions is held invalid or illegal or unenforceable for any reason by any court of competent jurisdiction, such provision shall be severed and the remainder of provisions of the terms and conditions shall continue in full force and effect as if the Term of Use had been executed with the invalid, illegal or unenforceable provision eliminated.
11. If there are any discrepancies in the information provided, please bring it to attention of Datanet for suitable rectification measures.

**Buy Online This Complete Book At
Datanet India eBooks Store**

www.indiastatpublications.com

or go directly at

[http://www.indiastatpublications.com/
Assembly_factbook/Assam/Silchar/ Dholai](http://www.indiastatpublications.com/Assembly_factbook/Assam/Silchar/Dholai)

 **indiastat**elections

