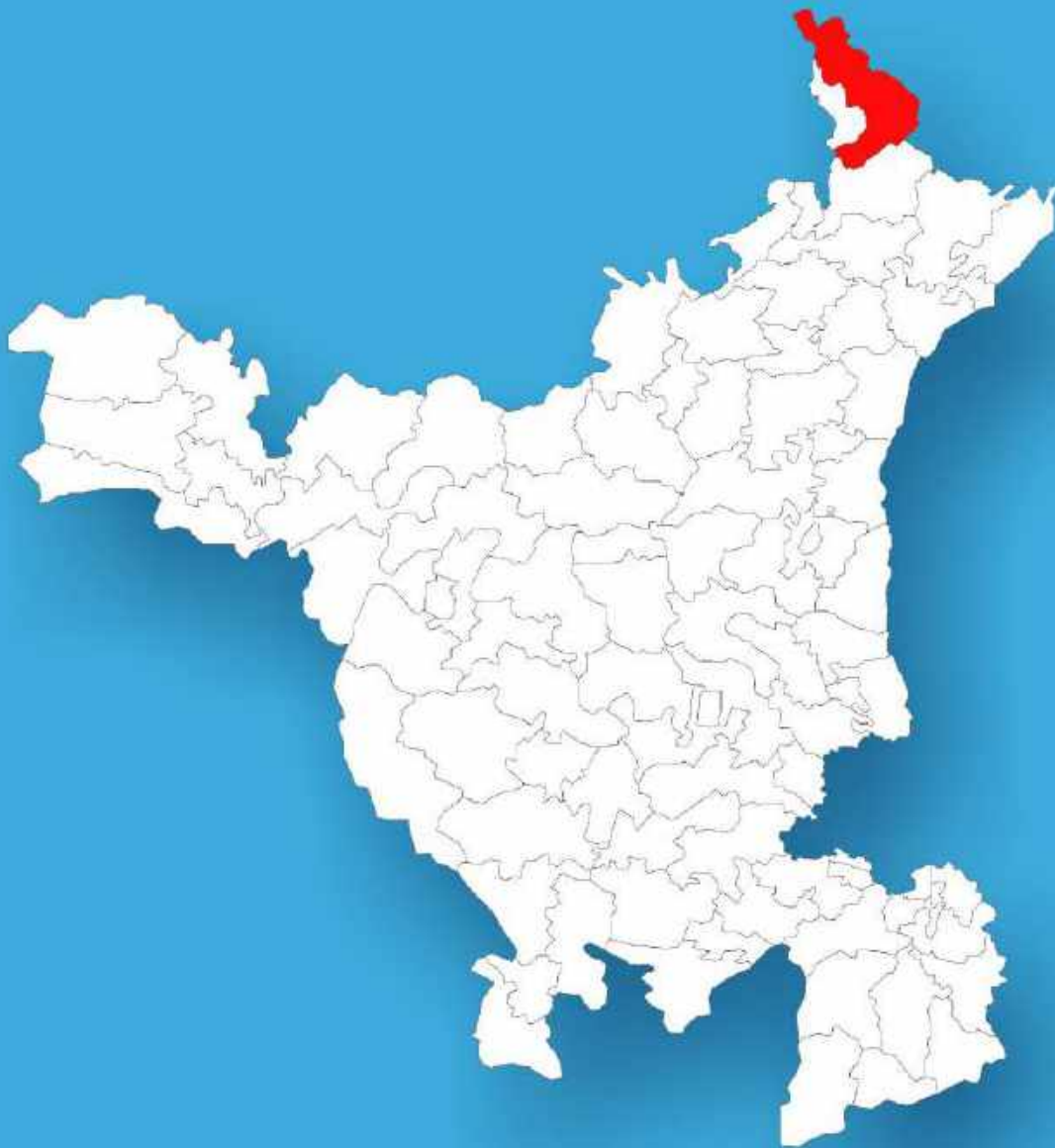




Haryana

Assembly Factbook™

Kalka Assembly Constituency



Key Electoral Data of Kalka
Assembly Constituency (Vidhan Sabha)

Haryana
Assembly FactbookTM
Kalka Assembly Constituency



Kalka Vidhan Sabha

Editor & Director

Dr. R.K. Thukral

Research Editor

Dr. Shafeeq Rahman

Compiled, Researched and Published by Datanet India Pvt. Ltd.

D-100, 1st Floor,

Okhla Industrial Area, Phase-I,
New Delhi- 110020.

Ph.: 91-11- 43580781-84

Email : support@indiastatpublications.com

Website : www.indiastatelections.com

Online Book Store :

www.indiastatpublications.com

Report No. : AFB/HR-01-0125

ISBN : 978-93-5293-509-3

First Edition : January, 2018

Eighth Updated Edition : January, 2025

Price : Rs. 11500/-

US\$ 310

© Datanet India Pvt. Ltd.

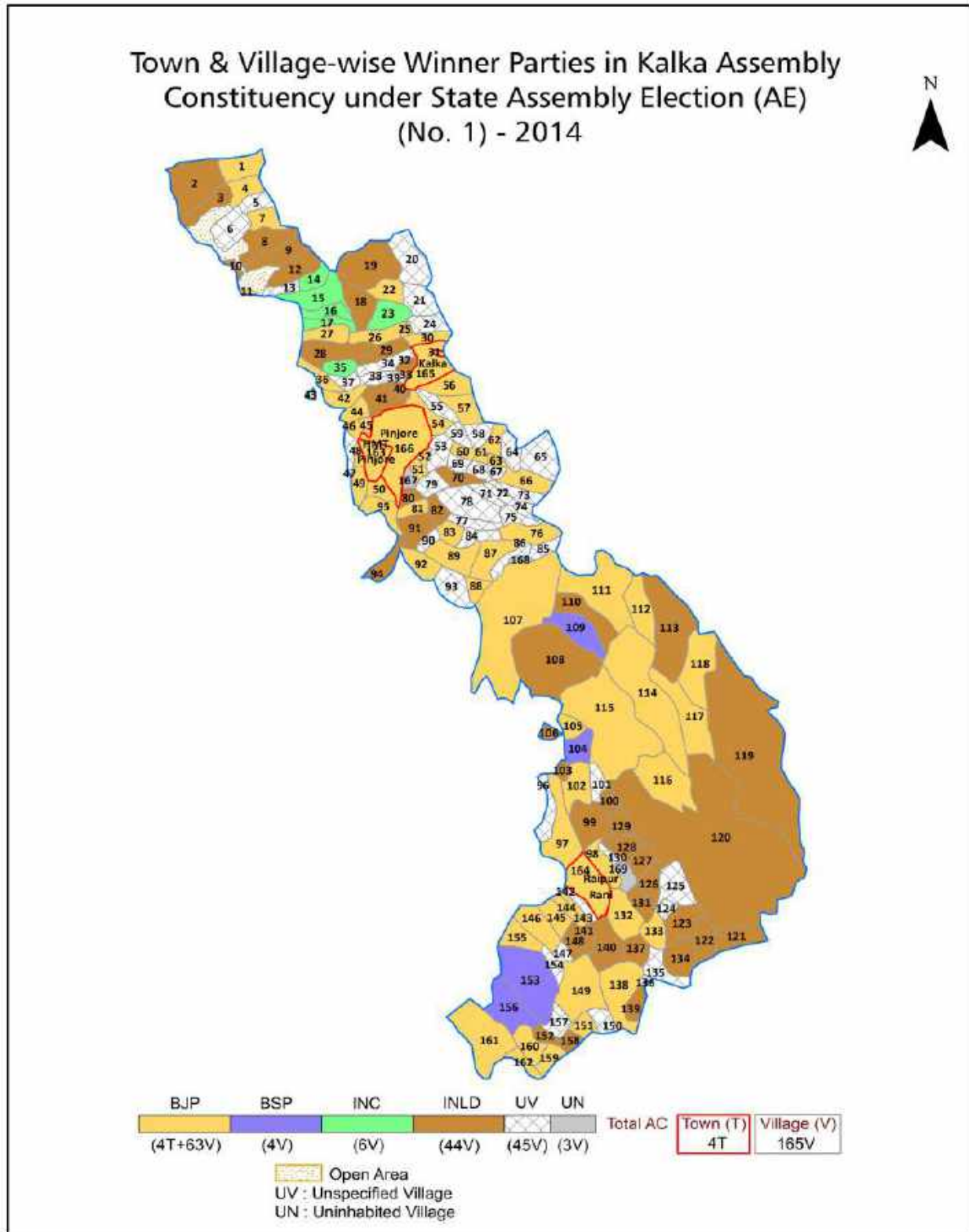
All rights reserved. No part of this book may be reproduced, stored in a retrieval system or transmitted in any form or by any means, mechanical photocopying, photographing, scanning, recording or otherwise without the prior written permission of the publisher. Please refer to Disclaimer at page no. 200 for the use of this publication.

Printed in India

Contents

No.	Particulars	Page No.
	Introduction	
1	Assembly Constituency - (Vidhan Sabha) at a Glance Features of Assembly as per Delimitation Commission of India (2008)	1-2
	Location and Political Maps	
2	Location Map Boundaries of Assembly Constituency - (Vidhan Sabha) in District Boundaries of Assembly Constituency under Parliamentary Constituency - (Lok Sabha) Town & Village-wise Winner Parties- 2024-PE, 2024-AE, 2019-PE, 2019-AE, 2014-PE, 2014-AE, 2009-PE and 2009-AE	3-11
	Administrative Setup (2011)	
3	District Sub-district Towns Villages Inhabited Villages Uninhabited Villages Village Panchayat Intermediate Panchayat	12-20
	Demographics (2011)	
4	Population Households Rural/Urban Population Towns and Villages by Population Size Sex Ratio (Total & 0-6 Years) Religious Population Social Population Literacy Rate	21-22
	Electoral Features	
5	Important Dates of Last Elections Held Electors by Gender Service Electors Voters Voters Turnout Polling Stations & Average Number of Electors per Polling Station Electors by Age Group Present Elected Representatives	23-28
	Historical Summary Election Results	
6	Vote Share of Major Parties Winning Margin (Number & Percentage Polarity of Parties Summary Result of Assembly Segment of Parliamentary Elections 2024, 2019, 2014, 2009, 2004 and 1999 Summary Result of Assembly Elections 2024, 2019, 2014, 2009, 2005, 2000, 1996, 1991, 1987, 1982, 1977, 1972, 1968 and 1967	29-50
	Polling Station Level Election Results	
7	Name and Number of Polling Station 2024-PE, 2024-AE, 2019-PE, 2019-AE, 2014-PE, 2014-AE, 2009-PE and 2009-AE Polling Station-wise Electors, Voters & Voters Turnout 2024-PE, 2024-AE, 2019-PE, 2019-AE, 2014-PE, 2014-AE, 2009-PE and 2009-AE Polling Station wise Elections Results 2024-PE, 2024-AE, 2019-PE, 2019-AE, 2014-PE, 2014-AE, 2009-PE and 2009-AE	51-177
	Share of Assembly Constituency	
8	Share of Assembly Constituency - (Vidhan Sabha) in State, District and Parliamentary Constituency - (Lok Sabha)	178
	Socio-Economic Amenities (2011)	
9	Access to Administrative Units Agricultural, Manufacturing and Industrial Commodities Demographic Indicators Education Health & Manpower Drinking Water Supply Sanitation Entertainment and Recreations Infrastructure Power Food Allocation Distribution and Marketing of Agriculture Commodities Infrastructure Transport and Road Infrastructure Communication Banking and Financial Services Land Use Irrigation Source	180-194
10	Abbreviation & Sources	196-198
11	Disclaimer	200

Location & Political Map



Administrative Setup

List of Village Panchayat & Intermediate Panchayat (Block) Name - 2011

Village Name	Village Panchayat Name	Intermediate Panchayat Name
Amrala (242)	Amrala	Barwala
Badhaur (208)	Badhaur	Raipur Rani
Bagharni (168)	Janouli	Pinjore
Bagwala (20)	Bagwala	Raipur Rani
Bagwali (19)	Bagwali	Raipur Rani
Bahbalpur (21)	Bahbalpur	Raipur Rani
Banoi Khuda Bax (131)	Banoi Khuda Bax	Pinjore
Banoi Sanwalia (132)	Banoi Sanwalia	Pinjore
Bansghati (180)	Kharkua	Pinjore
Bar (135)	Bar	Pinjore
Barauna Chhota (7)	Tibi Majra	Raipur Rani
Barauna Kalan (9)	Barauna Kalan	Raipur Rani
Basawal (125)	Basawal	Pinjore
Basdevpura (151)	Basdevpura	Pinjore
Bazidpur (267)	Bazidpur	Raipur Rani
Ber Ghati (173)	Ber Ghati	Pinjore
Bhagpur (248)	Ferozepur	Raipur Rani
Bhagwanpur (193)	Bhagwanpur	Pinjore
Bhanvli (264)	Bhanvli	Raipur Rani
Bharauli (212)	Bharauli	Barwala
Bharon Ki Ser (Part) (149)	Bharon Ki Ser (Part)	Pinjore
Bhawana (155)	Bhawana	Pinjore
Bhogpur (190)	Bhogpur	Pinjore
Bhoj Balig (325)	Bhoj Balig	Morni
Bhoj Darara (321)	Bhoj Darara	Morni
Bhoj Dharti (318)	Bhoj Dharti	Morni
Bhoj Jabial (324)	Bhoj Jabial	Morni
Bhoj Kothi (323)	Bhoj Kothi	Morni
Bhoj Koti (322)	Bhoj Koti	Morni

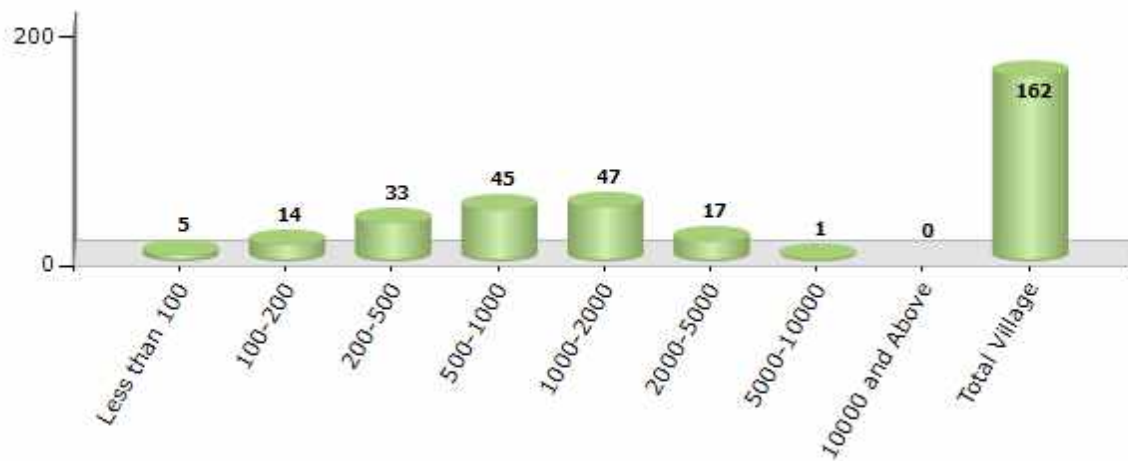
Contd....

Demographics

Number of Villages by Population Size - 2011

Less than 100	100-200	200-500	500-1000	1000-2000	2000-5000	5000-10000	10000 and Above	Total Village
5	14	33	45	47	17	1	0	162

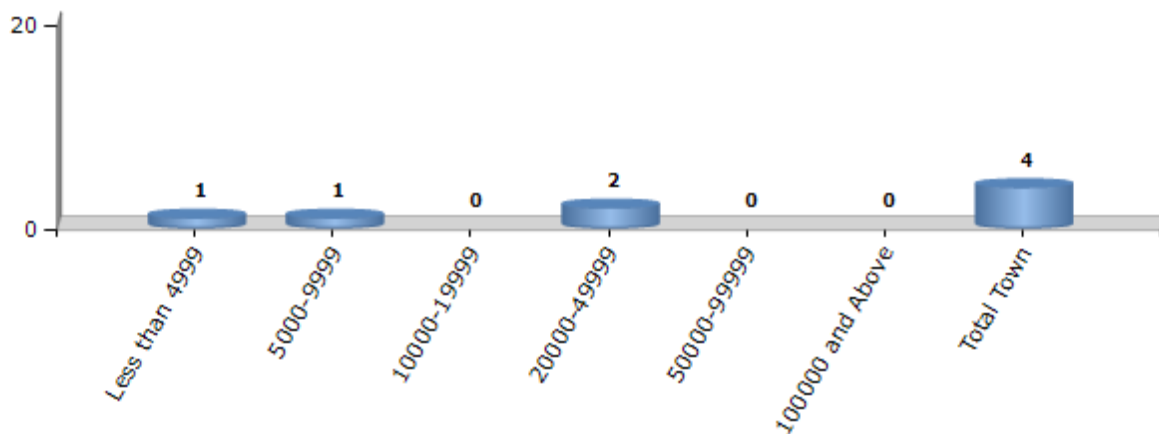
Number of Villages by Population Size - 2011



Number of Towns by Population Size - 2011

Less than 4999	5000-9999	10000-19999	20000-49999	50000-99999	100000 and Above	Total Town
1	1	0	2	0	0	4

Number of Towns by Population Size - 2011

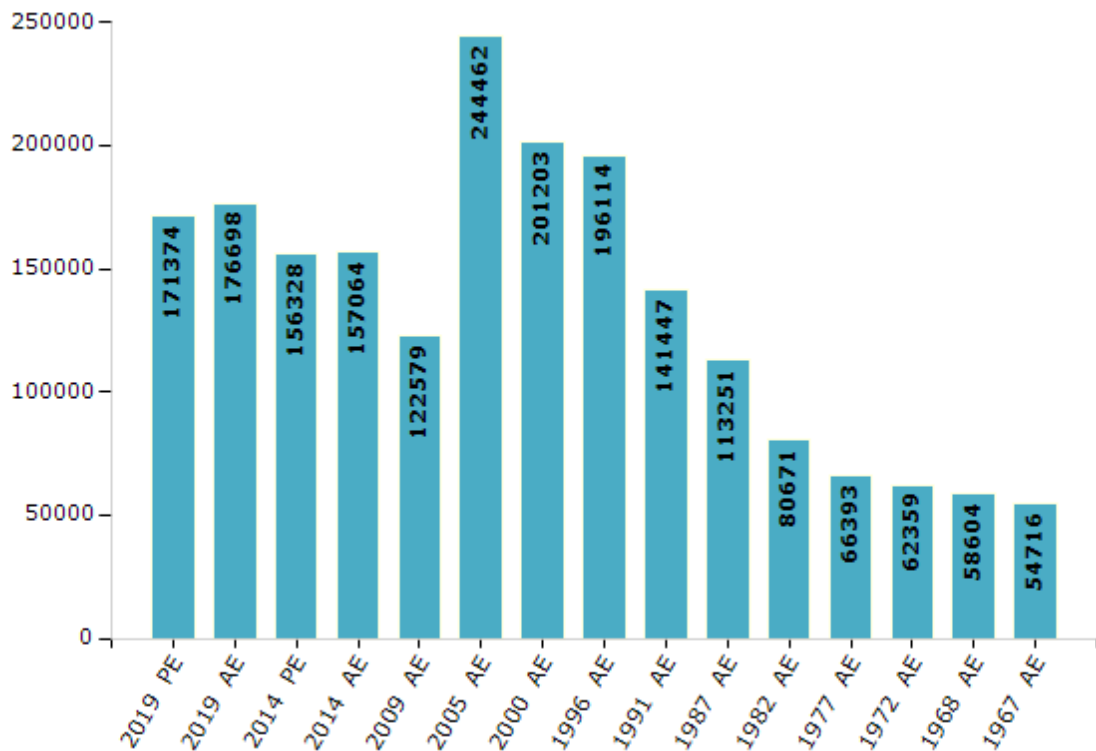


Electoral Features

Electors by Male & Female

Year	Male	Female	Others	Total	Year	Male	Female	Others	Total
2019 PE	91030	80332	12	171374	1999 PE	-	-	-	-
2019 AE	93454	83232	12	176698	1996 AE	104604	91510	-	196114
2014 PE	83751	72577	0	156328	1991 AE	78286	63161	-	141447
2014 AE	83776	73288	0	157064	1987 AE	61669	51582	-	113251
2009 PE	-	-	-	-	1982 AE	44009	36662	-	80671
2009 AE	67243	55336	-	122579	1977 AE	36656	29737	-	66393
2005 AE	133158	111304	-	244462	1972 AE	34414	27945	-	62359
2004 PE	-	-	-	-	1968 AE	33374	25230	-	58604
2000 AE	111247	89956	-	201203	1967 AE	-	-	-	54716

Number of Electors



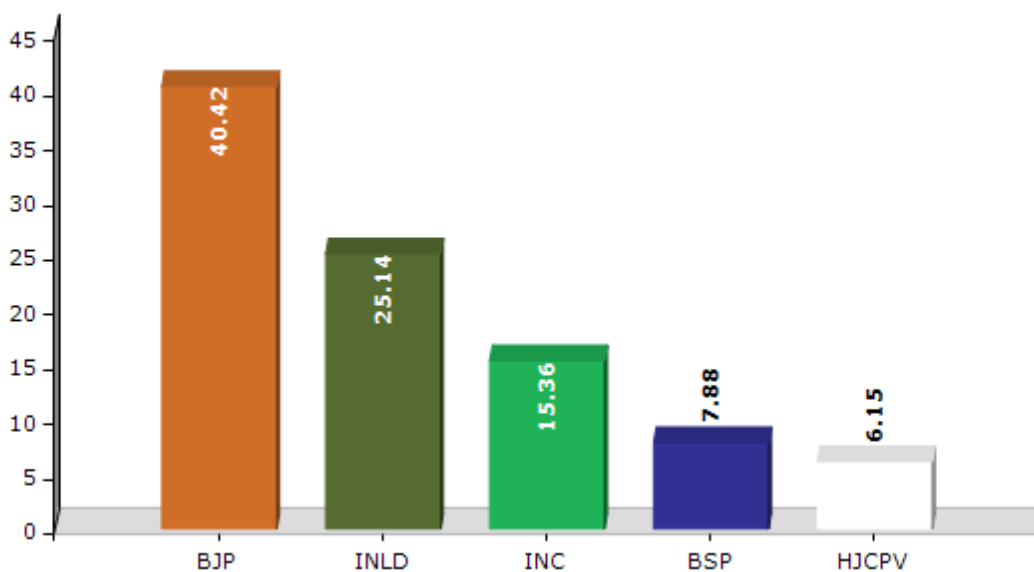
Note : AE : Assembly Election, PE : Assembly Segment of Parliamentary Election

Historical Summary Election Results

Summary Result of Assembly Election - 2014

Candidate Name	Party	Votes	Votes %
Latika Sharma	BJP	50347	40.42
Pardeep Chaudhary	INLD	31320	25.14
Manvir Kaur	INC	19139	15.36
Satvinder Singh Rana	BSP	9817	7.88
Shakti Rani Sharma	HJCPV	7661	6.15
Sudesh Sharma	IND	2435	1.95
Ajaib Singh	IND	1301	1.04
Vijay Bansal	IND	807	0.65
Sunil Kumar	IND	265	0.21
Swarn Singh Gurjar	HaLP	242	0.19
Amit Sharma	RasLP	194	0.16
Chander Kanta	SMBHP	147	0.12
	NOTA	888	0.71

Votes Percentage of Top Parties - 2014



Polling Station Level Election Results

Number and Name of Polling Stations (PS) (2019 AE)

Number of Polling Stations	Name of Polling Stations	Number of Polling Stations	Name of Polling Stations
1	Govt. Primary School, Nawanagar	22	Govt. Sr. Sec School, Charniya
2	Govt. Primary School, Shahapur	23	Govt. Primary School, Johaluwal
3	Govt. Primary School, Khokhra	24	Govt. High School, Paploha
4	Govt. Primary School, Gorakhnath	25	Govt. Primary School, Majra Mehtab
5	Govt. High School, Maranwala	26	Govt. High School, Nagalbhaga
6	Govt. High School, Maranwala	27	Govt. Primary School, Kandiyala
7	Govt. High School, Maranwala	28	Govt. Middle School, Oriyan
8	Govt. Primary School, Kauna	29	Govt. Primary School, Khera Sitaram
9	Govt. Middle School, Rampur Jangi	30	Govt. Middle School, Tagra Sahu
10	Govt. Middle School, Kholmulla	31	Govt. Primary School, Tagra Kaliram
11	Govt. Primary School, Kholfateh Singh	32	Govt. Primary School, Tagra Kaliram
12	Govt. Senior Secondary School, Nanakpur	33	Govt. Middle School, Tagra Sahu
13	Govt. Senior Secondary School, Nanakpur	34	Govt. Middle School, Tagra Sahu
14	Govt. Primary School, Ramnagar	35	Govt. High School, Grida
15	Govt. Senior Secondary School, Karanpur	36	Govt. Middle School, Kiratpur
16	Govt. Senior Secondary School, Karanpur	37	Govt. Senior Secondary School, Basawal
17	Govt. Primary School, Banoi Khudabakhsh	38	Govt. Middle School, Majri Jatta
18	Govt. Senior Secondary School, Barh	39	Govt. Primary School, Dhamala
19	Govt. Primary School, Nangalratal	40	Govt. Primary School, Dhamala
20	Govt. Primary School, Kherhawali	41	Govt. Primary School, Vasdevpura
21	Govt. Primary School, Kherhawali	42	Municipal Coroporation Office, Kalka

Contd....

Polling Station Level Election Results

Polling Station-wise Votes Secured by Overall Top Five Parties in Kalka Assembly in Assembly Election (AE) under Ambala Parliamentary Constituency in Haryana (2019)

No. of Polling Station	Winner - Pardeep Chaudhary (INC)	Runner-up - Latika Sharma (BJP)	3rd - Kiran Chaudhary (JNJP)	4th - Satinder Singh (INLD)	5th - Ashwani Nagra (BSP)	NOTA	Other	Total Votes Secured
36	420	328	24	143	1	4	23	943
37	429	304	6	145	9	1	15	909
38	127	150	22	91	10	4	6	410
39	307	123	11	82	2	4	11	540
40	312	175	7	7	3	0	6	510
41	414	420	11	15	11	4	12	887
42	279	296	21	6	12	9	24	647
43	189	145	8	4	1	4	10	361
44	228	154	2	8	5	3	8	408
45	291	294	23	8	2	7	10	635
46	228	233	4	12	2	3	2	484
47	308	282	12	6	2	6	4	620
48	253	393	101	13	6	8	18	792
49	223	343	30	6	5	6	9	622
50	228	220	17	2	2	5	10	484
51	265	311	3	20	3	4	5	611
52	185	233	9	11	3	4	3	448
53	238	299	9	9	3	8	5	571
54	299	299	19	4	1	8	6	636
55	153	202	9	4	2	4	5	379
56	251	275	20	7	4	12	10	579
57	250	312	5	19	4	8	26	624
58	231	368	8	4	2	7	36	656
59	247	312	9	10	4	12	25	619
60	294	274	166	5	9	10	16	774
61	271	341	19	2	13	8	10	664
62	122	121	5	2	3	2	6	261
63	187	188	33	5	4	1	1	419
64	112	163	1	2	2	1	1	282
65	293	305	2	1	2	3	11	617
66	261	376	10	17	6	4	22	696
67	225	331	22	19	13	3	11	624
68	265	415	30	40	12	3	3	768
69	192	292	13	286	15	12	19	829
70	97	69	0	10	16	1	5	198

Contd....

Polling Station Level Election Results

Winner, Runner-up and 3rd Party Position & Winning Margin According to Polling Stations in Kalka Assembly in Assembly Election (AE) under Ambala Parliamentary Constituency in Haryana (2019)

Polling Station Number	Winner Party	Winner Votes (%)	Runner-up Party	Runner-up Votes (%)	Winning Margin Votes (%)	Third Party	Third Party Votes (%)	Other Votes (%)
71	INC	205 (55.71)	BJP	89 (24.18)	116 (31.53)	BSP	37 (10.05)	37 (10.05)
72	INLD	311 (40.28)	INC	235 (30.44)	76 (9.84)	BJP	198 (25.65)	28 (3.63)
73	INC	290 (33.6)	INLD	290 (33.6)	0 (0)	BJP	248 (28.74)	35 (4.06)
74	INLD	408 (54.04)	BJP	156 (20.66)	252 (33.38)	INC	152 (20.13)	39 (5.17)
75	INC	233 (39.97)	INLD	186 (31.9)	47 (8.07)	BJP	144 (24.7)	20 (3.43)
76	INC	269 (44.03)	INLD	168 (27.5)	101 (16.53)	BJP	139 (22.75)	35 (5.73)
77	BJP	399 (56.92)	INC	240 (34.24)	159 (22.68)	INLD	38 (5.42)	24 (3.42)
78	INC	271 (44.07)	BJP	216 (35.12)	55 (8.95)	INLD	105 (17.07)	23 (3.74)
79	BJP	161 (48.79)	INC	94 (28.48)	67 (20.31)	INLD	50 (15.15)	25 (7.58)
80	INC	313 (44.71)	BJP	257 (36.71)	56 (8)	INLD	114 (16.29)	16 (2.29)
81	INC	268 (41.49)	BJP	254 (39.32)	14 (2.17)	INLD	91 (14.09)	33 (5.11)
82	INC	112 (39.44)	JNJP	69 (24.3)	43 (15.14)	BJP	58 (20.42)	45 (15.85)
83	INC	284 (45.01)	BJP	230 (36.45)	54 (8.56)	INLD	85 (13.47)	32 (5.07)
84	INC	307 (42)	BJP	302 (41.31)	5 (0.69)	INLD	87 (11.9)	35 (4.79)
85	BJP	286 (45.18)	INC	264 (41.71)	22 (3.47)	INLD	55 (8.69)	28 (4.42)
86	INC	317 (45.88)	BJP	281 (40.67)	36 (5.21)	INLD	57 (8.25)	36 (5.21)
87	BJP	264 (47.83)	INC	189 (34.24)	75 (13.59)	INLD	47 (8.51)	52 (9.42)
88	INC	170 (37.95)	BJP	161 (35.94)	9 (2.01)	INLD	90 (20.09)	27 (6.03)
89	BJP	305 (44.53)	INC	279 (40.73)	26 (3.8)	INLD	61 (8.91)	40 (5.84)
90	INC	325 (45.52)	BJP	306 (42.86)	19 (2.66)	INLD	43 (6.02)	40 (5.6)
91	BJP	425 (51.14)	INC	343 (41.28)	82 (9.86)	INLD	21 (2.53)	42 (5.05)
92	INC	340 (51.99)	BJP	230 (35.17)	110 (16.82)	JNJP	39 (5.96)	45 (6.88)
93	BJP	414 (52.6)	INC	306 (38.88)	108 (13.72)	JNJP	24 (3.05)	43 (5.46)
94	BJP	247 (43.11)	INC	195 (34.03)	52 (9.08)	BSP	65 (11.34)	66 (11.52)
95	BJP	297 (45.14)	INC	267 (40.58)	30 (4.56)	BSP	36 (5.47)	58 (8.81)
96	BJP	337 (53.58)	INC	216 (34.34)	121 (19.24)	JNJP	40 (6.36)	36 (5.72)
97	BJP	280 (62.08)	INC	137 (30.38)	143 (31.7)	JNJP	13 (2.88)	21 (4.66)
98	BJP	394 (59.07)	INC	205 (30.73)	189 (28.34)	JNJP	25 (3.75)	43 (6.45)
99	BJP	344 (62.21)	INC	105 (18.99)	239 (43.22)	JNJP	72 (13.02)	32 (5.79)
100	BJP	431 (51.56)	INC	350 (41.87)	81 (9.69)	JNJP	25 (2.99)	30 (3.59)
101	BJP	375 (48.02)	INC	267 (34.19)	108 (13.83)	JNJP	93 (11.91)	46 (5.89)
102	INC	463 (55.85)	BJP	282 (34.02)	181 (21.83)	INLD	45 (5.43)	39 (4.7)
103	INC	178 (50.42)	BJP	150 (42.49)	28 (7.93)	INLD	9 (2.55)	16 (4.53)
104	BJP	370 (43.43)	INC	337 (39.55)	33 (3.88)	JNJP	66 (7.75)	79 (9.27)
105	BJP	331 (44.55)	INC	277 (37.28)	54 (7.27)	JNJP	84 (11.31)	51 (6.86)

Contd....

Socio-Economic Amenities - Rural

Access to Education Facilities

Particulars	Number of Villages (% of Population)				
	Available	Not Available	If Not Available (Distance of Nearest Facility)		
			A	B	C
Govt. Primary School	134 (94)	28 (6)	25 (6)	1 (0)	1 (0)
Private Primary School	30 (32)	132 (68)	0 (0)	0 (0)	0 (0)
Govt. Middle School	78 (69)	84 (31)	60 (21)	12 (3)	2 (1)
Private Middle School	27 (29)	135 (71)	2 (2)	1 (1)	0 (0)
Govt. Secondary School	37 (37)	125 (63)	74 (38)	30 (10)	8 (5)
Private Secondary School	14 (17)	148 (83)	3 (2)	0 (0)	2 (0)
Govt. Senior Secondary School	15 (17)	147 (83)	72 (41)	49 (23)	16 (11)
Private Senior Secondary School	8 (9)	154 (91)	1 (1)	0 (0)	2 (1)
Govt. Arts and Science Degree College	0 (0)	162 (100)	9 (12)	37 (28)	113 (59)
Private Arts and Science Degree College	0 (0)	162 (100)	1 (1)	1 (0)	1 (1)
Govt. Engineering College	0 (0)	162 (100)	4 (1)	9 (8)	65 (33)
Private Engineering College	2 (3)	160 (97)	13 (9)	34 (22)	35 (26)
Govt. Medicine College	0 (0)	162 (100)	1 (0)	3 (1)	94 (53)
Private Medicine College	2 (3)	160 (97)	8 (5)	15 (8)	39 (30)
Govt. Management Institute	0 (0)	162 (100)	2 (0)	2 (3)	74 (40)
Private Management Institute	2 (3)	160 (97)	12 (7)	31 (23)	39 (24)
Govt. Polytechnic	0 (0)	162 (100)	2 (1)	7 (5)	100 (58)
Private Polytechnic	2 (1)	160 (99)	7 (4)	19 (13)	25 (18)
Govt. Vocational Training School/ITI	1 (2)	161 (98)	22 (15)	69 (45)	65 (35)
Private Vocational Training School/ITI	1 (1)	161 (99)	3 (1)	0 (0)	1 (1)
Govt. Non Formal Training Centre	1 (1)	161 (99)	17 (13)	34 (25)	104 (58)
Private Non Formal Training Centre	0 (0)	162 (100)	2 (1)	3 (2)	1 (1)
Govt. School For Disabled	0 (0)	162 (100)	1 (0)	11 (11)	150 (89)
Private School For Disabled	0 (0)	162 (100)	0 (0)	0 (0)	0 (0)
Government Others	0 (0)	162 (100)	0 (0)	0 (0)	0 (0)
Private Others	0 (0)	162 (100)	0 (0)	0 (0)	0 (0)

Note : Distance A : Less than 5 km; B : Between 5-10 km; C : 10+ km.; Source : Data Analysis is based on 2011 Census.

DISCLAIMER

The Terms of Use and Disclaimer of Datanet India Private Limited (hereinafter referred to as "Datanet") for use of this analysis report of **Kalka Assembly Constituency (Kalka Vidhan Sabha)** :-

1. **Assembly Factbook™** is a Registered Trade Mark owned by Datanet.
2. All the maps are sketched and graphical representation only and have not been drawn to the scale and also not to represent the actual geographical area or boundary of the unit.
3. The data for the aforesaid analysis is based on authentic sources and has been culled from the various publications of Census, CSO and NSSO for district and block level data, various central and state government departments, Central & State Elections Commissions and the concerned Returning Officers' releases, Electoral Rolls, Election results and allied publications, internal assessment, surveys, estimates and analysis. Therefore, certain adjustment of data at micro level may have been done to arrive closer to the macro data.
4. Data have been provided on an "As Is" and "As AVAILABLE" basis
5. The colours shown in the maps or diagram and charts of a particular party, alliance or AC are indicative and do not represent them.
6. This publication which includes maps, sheets, graphs and data would be the property under copyright of Datanet only. The user may use these for its internal study, analysis and research purposes. It's public display, re-selling or any commercial uses by the user are not allowed.
7. Datanet has taken due care and caution in compilation and processing of data and allied information, but does not guarantee the accuracy, adequacy or completeness of any information/analysis and will be not responsible for any errors or omissions or for the results obtained from the use of such information/analysis.
8. All the contents for the publication have been culled from various authentic sources and Datanet reasonably believes such sources to be reliable, but does not make any representations, express or implied as to the accuracy or fitness of use of such information. The information or contents of the information/analysis do not constitute advice and should not be relied upon in making (or refraining from making) any decision. Any reliance placed upon the information provided by Datanet is the sole responsibility and strictly at the user's risk.
9. In no event will Datanet be liable for any damages (including, without limitation, damages for loss of business projects, or loss of profits) arising in contract, tort or otherwise from the use of or inability to use any of its contents, or from any action taken (or refrained from being taken) as a result of using the analysis or any of its contents. Datanet its directors, owners, editors, officials, employees, distributor and agents or any associate will not be liable for any errors in the information contained or any consequences arising from the use of the contents of the provided information/analysis.
10. If any provision of these terms and conditions is held invalid or illegal or unenforceable for any reason by any court of competent jurisdiction, such provision shall be severed and the remainder of provisions of the terms and conditions shall continue in full force and effect as if the Term of Use had been executed with the invalid, illegal or unenforceable provision eliminated.
11. If there are any discrepancies in the information provided, please bring it to attention of Datanet for suitable rectification measures.

**Buy Online This Complete Book At
Datanet India eBooks Store**

www.indiastatpublications.com

or go directly at

[http://www.indiastatpublications.com/
Assembly_factbook/Haryana/Ambala/ Kalka](http://www.indiastatpublications.com/Assembly_factbook/Haryana/Ambala/Kalka)

 **india**stat**elections**

