



Jharkhand

Assembly Factbook™

Chatra Assembly Constituency



Key Electoral Data of Chatra
Assembly Constituency (Vidhan Sabha)

Jharkhand

Assembly Factbook™

Chatra Assembly Constituency



Chatra Vidhan Sabha

Editor & Director

Dr. R.K. Thukral

Research Editor

Dr. Shafeeq Rahman

Compiled, Researched and Published by Datanet India Pvt. Ltd.

D-100, 1st Floor,

Okhla Industrial Area, Phase-I,
New Delhi- 110020.

Ph.: 91-11- 43580781-84

Email : support@indiastatpublications.com

Website : www.indiastatelections.com

Online Book Store :

www.indiastatpublications.com

Report No. : AFB/JH-27-0125

ISBN : 978-93-5301-962-4

First Edition : January, 2018

Eighth Updated Edition : January, 2025

Price : Rs. 11500/-

US\$ 310

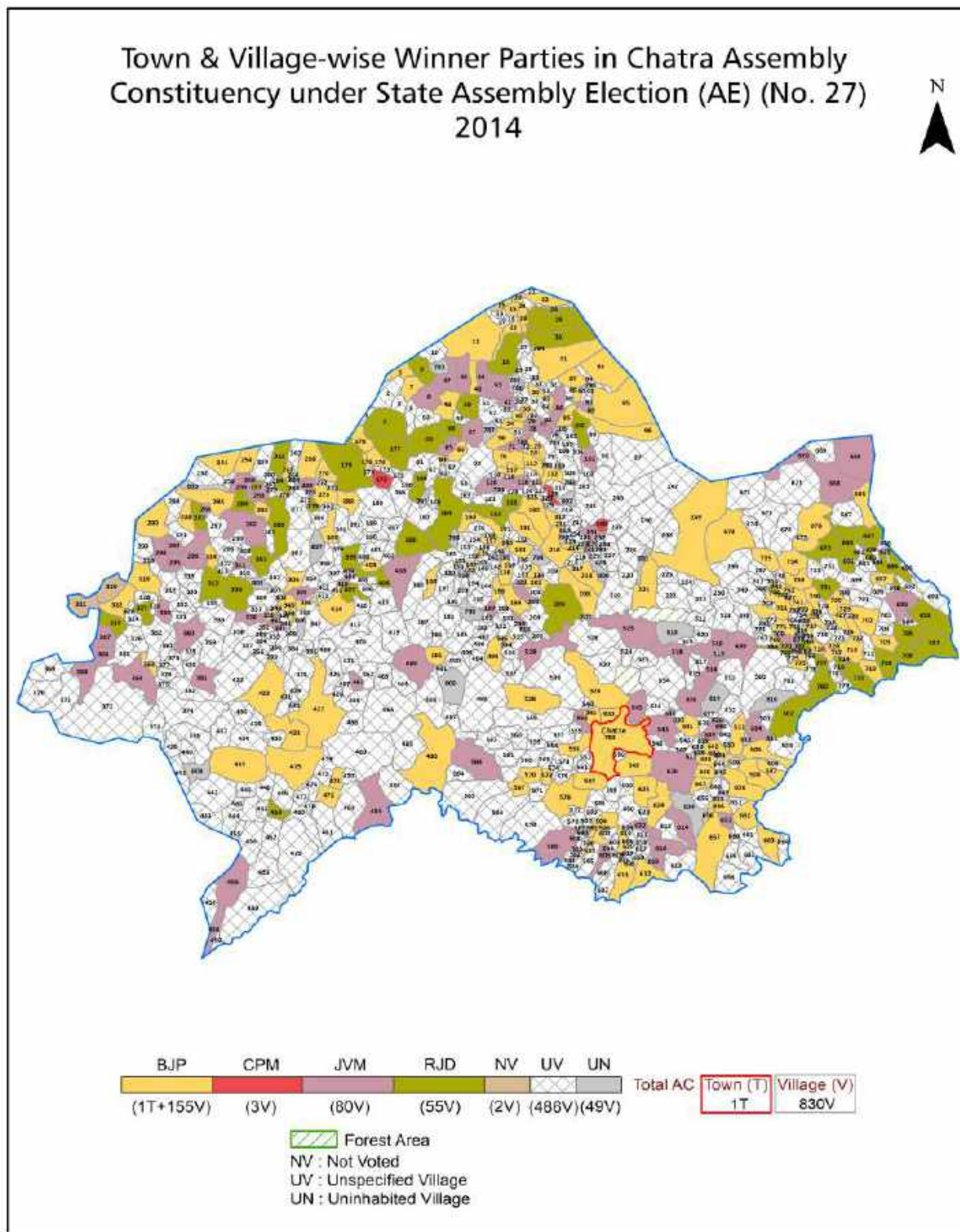
© Datanet India Pvt. Ltd.

All rights reserved. No part of this book may be reproduced, stored in a retrieval system or transmitted in any form or by any means, mechanical photocopying, photographing, scanning, recording or otherwise without the prior written permission of the publisher. Please refer to Disclaimer at page no. 339 for the use of this publication.

Printed in India

No.	Particulars	Page No.
	Introduction	
1	Assembly Constituency - (Vidhan sabha) at a Glance Features of Assembly as per Delimitation Commission of India (2008)	1-2
	Location and Political Maps	
2	Location Map Boundaries of Assembly Constituency - (Vidhan sabha) in District Boundaries of Assembly Constituency under Parliamentary Constituency - (Lok sabha) Town & Village-wise Winner Parties- 2024-PE, 2024-AE, 2019-PE, 2019-AE, 2014-PE, 2014-AE, 2009-PE and 2009-AE	3-11
	Administrative Setup (2011)	
3	District Sub-district Towns Villages Inhabited Villages Uninhabited Villages Village Panchayat Intermediate Panchayat	12-49
	Demographics (2011)	
4	Population Households Rural/Urban Population Towns and Villages by Population Size Sex Ratio (Total & 0-6 Years) Religious Population Social Population Literacy Rate	50-51
	Electoral Features	
5	Important Dates of Last Elections Held Electors by Gender Service Electors Voters Voters Turnout Polling Stations & Average Number of Electors per Polling Station Electors by Age Group Present Elected Representatives	52-57
	Historical Summary Election Results	
6	Vote Share of Major Parties Winning Margin (Number & Percentage) Polarity of Parties Summary Result of Assembly Segment of Parliamentary Elections 2024, 2019, 2014, 2009 and 2004 Summary Result of Assembly Elections 2024, 2019, 2014, 2009 and 2005	58-69
	Polling Station Level Election Results	
7	Name and Number of Polling Station 2024-PE, 2024-AE, 2019-PE, 2019-AE, 2014-PE, 2014-AE, 2009-PE and 2009-AE Polling Station-wise Electors, Voters & Voters Turnout 2024-PE, 2024-AE, 2019-PE, 2019-AE, 2014-PE, 2014-AE, 2009-PE and 2009-AE Polling Station wise Elections Results 2024-PE, 2024-AE, 2019-PE, 2019-AE, 2014-PE, 2014-AE, 2009-PE and 2009-AE	70-317
	Share of Assembly Constituency	
8	Share of Assembly Constituency - (Vidhan sabha) in State, District and Parliamentary Constituency - (Lok sabha)	318
	Socio-Economic Amenities (2011)	
9	Access to Administrative Units Agricultural, Manufacturing and Industrial Commodities Demographic Indicators Education Health & Manpower Drinking Water Supply Sanitation Entertainment and Recreations Infrastructure Power Food Allocation Distribution and Marketing of Agriculture Commodities Infrastructure Transport and Road Infrastructure Communication Banking and Financial Services Land Use Irrigation Source	320-333
10	Abbreviation & Sources	335-337
11	Disclaimer	339

Location & Political Map



Administrative Setup

List of Village Panchayat & Intermediate Panchayat (Block) Name - 2011

Village Name	Village Panchayat Name	Intermediate Panchayat Name
Abukatu	Mokthama	Chatra
Adauria	Barura	Pratappur
Ahirpurwa	Jogiara	Pratappur
Ahuri	Ara	Chatra
Akta	Chakla	Shaligram Ram Narayanpur (Hunterganj)
Amauna	Bandiadih	Kunda
Amauna	Paradih	Chatra
Ambadih	Brahman	Chatra
Ambadohar	Dantar	Shaligram Ram Narayanpur (Hunterganj)
Amdiha	Gandharia	Chatra
Amin	Mirpur	Shaligram Ram Narayanpur (Hunterganj)
Amkudar	Bengokalan	Kanha Chatti
Angarah	Dumarwar	Pratappur
Anjnu	Babhne	Pratappur
Ara	Maktama	Chatra
Ara	Ara	Chatra
Arjun Khurd	Chakla	Shaligram Ram Narayanpur (Hunterganj)
Armedag	-	Kanha Chatti
Arudana	Gorhai	Chatra
Arugara	Jamri Bakaspura	Kanha Chatti
Asarhia	Dariatu	Chatra
Askal	Babhne	Pratappur
Asni Kalan	Ara	Chatra
Asni Khurd	Ara	Chatra
Aunru	Aunru	Shaligram Ram Narayanpur (Hunterganj)
Aunrwa	Karailibar	Shaligram Ram Narayanpur (Hunterganj)
Babhne	Babhne	Pratappur
Babudih	Margarha	Kunda
Bachdag	Dadha	Chatra

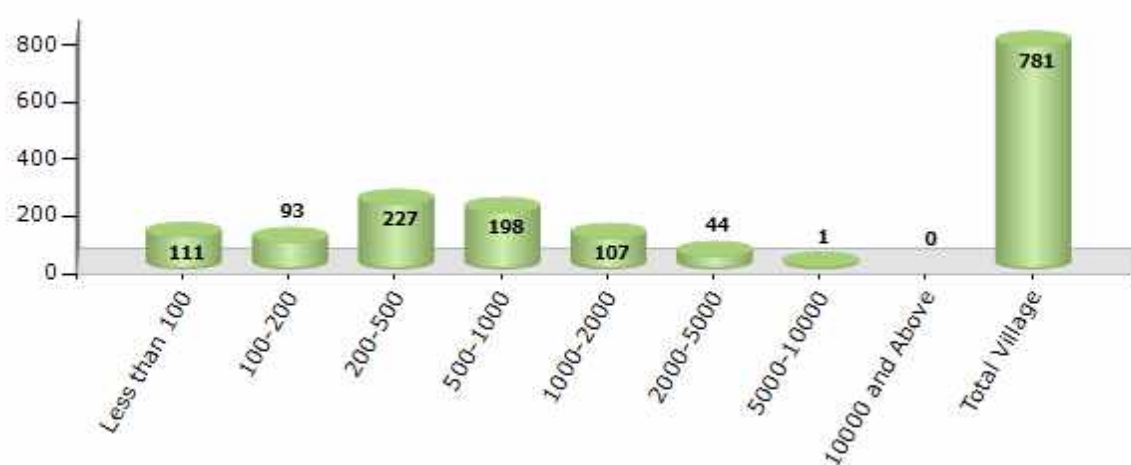
Contd....

Demographics

Number of Villages by Population Size - 2011

Less than 100	100-200	200-500	500-1000	1000-2000	2000-5000	5000-10000	10000 and Above	Total Village
111	93	227	198	107	44	1	0	781

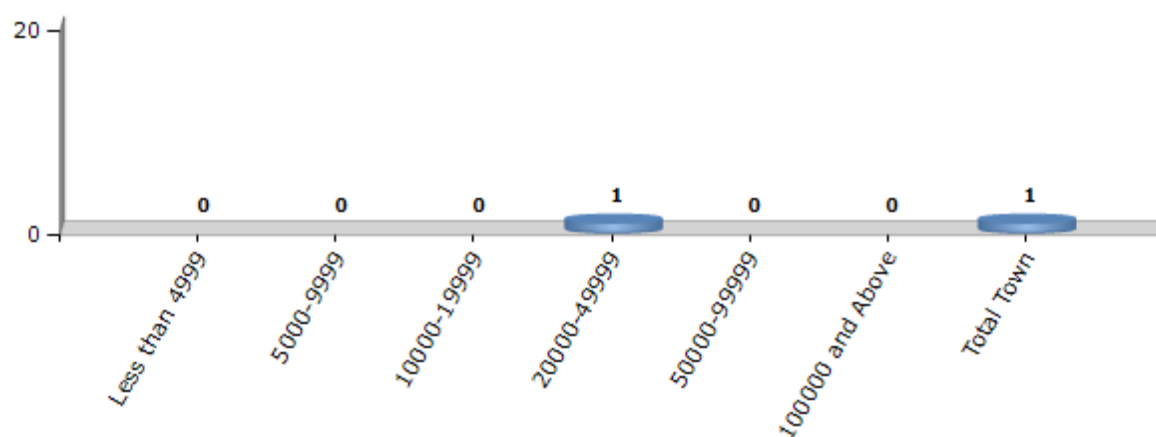
Number of Villages by Population Size - 2011



Number of Towns by Population Size - 2011

Less than 4999	5000-9999	10000-19999	20000-49999	50000-99999	100000 and Above	Total Town
0	0	0	1	0	0	1

Number of Towns by Population Size - 2011

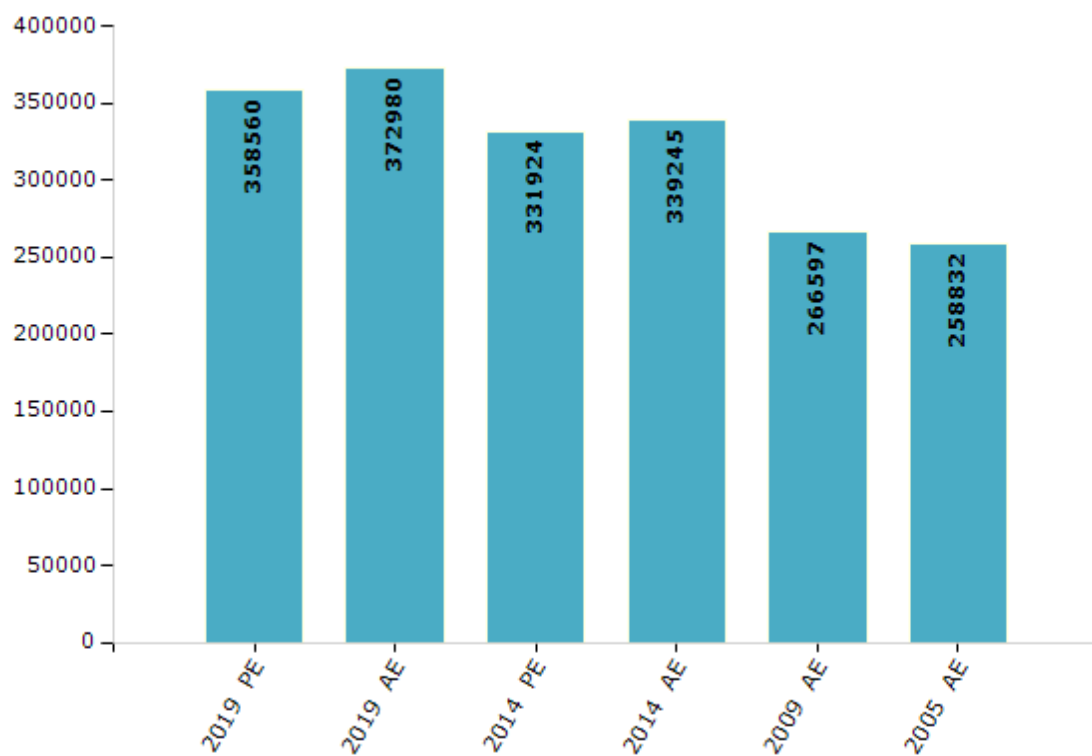


Electoral Features

Electors by Male & Female

Year	Male	Female	Others	Total	Year	Male	Female	Others	Total
2019 PE	189420	169140	0	358560	2009 PE	-	-	-	-
2019 AE	195624	177354	2	372980	2009 AE	141080	125517	-	266597
2014 PE	177094	154829	1	331924	2005 AE	137295	121537	-	258832
2014 AE	179602	159642	1	339245	2004 PE	-	-	-	-

Number of Electors



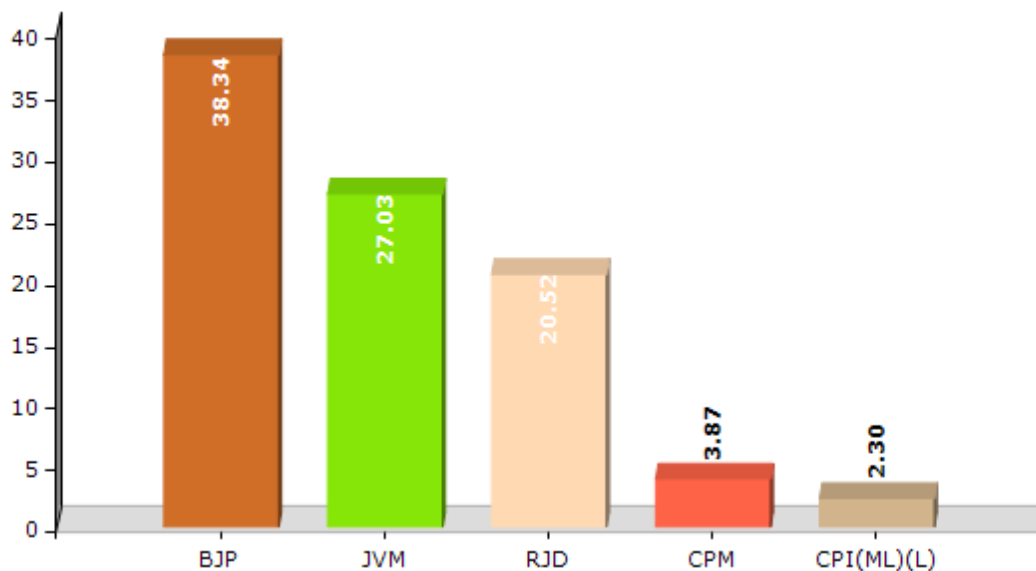
Note : AE : Assembly Election, PE : Assembly Segment of Parliamentary Election

Historical Summary Election Results

Summary Result of Assembly Election - 2014

Candidate Name	Party	Votes	Votes %
Jay Prakash Singh Bhogta	BJP	69745	38.34
Satyanand Bhokta	JVM	49169	27.03
Janardan Paswan	RJD	37320	20.52
Naresh Ram Bharti	CPM	7041	3.87
Umesh Bhuiyan	CPI(ML)(L)	4192	2.3
Sagar Ram	ABHM	3672	2.02
Manorma Devi	JMM	3041	1.67
	NOTA	7724	4.25

Votes Percentage of Top Parties - 2014



Polling Station Level Election Results

Number and Name of Polling Stations (PS) (2019 AE)

Number of Polling Stations	Name of Polling Stations	Number of Polling Stations	Name of Polling Stations
1	U.M.S. Nawadih Panari	22	U.M.S. Dhebo
2	Panchayat Bhawan Nawadih Panari	23	U.M.S. Daha East
3	U.M.S. Mayapur Urdu	24	U.M.S. Daha West
4	N.P.S. Saipur	25	U.M.S. Bela
5	U.M.S. Gouspur	26	U.M.S. Bihiya North
6	U.M.S. Jabra East	27	U.M.S. Bihiya South
7	U.M.S. Jabra West	28	M.S. Gerua North
8	M.S. Banka	29	M.S. Gerua South
9	U.M.S. Khajuria Kala	30	M.S. Gerua Middle
10	U.M.S. Gangta	31	U.M.S. Badhi Bigha North
11	U.M.S. Mirpur	32	U.M.S. Badhi Bigha South
12	U.M.S. Sonwarsa	33	U.M.S. Lenjwa North
13	U.M.S. Bhagowar	34	U.M.S. Lenjwa South
14	U.M.S. Kharouna	35	U.M.S. Akouna
15	U.M.S. Amin	36	U.M.S. Sagasot
16	U.M.S. Khutikewal Kala	37	U.M.S. Kosmahi
17	U.M.S. Urdu Bariyachak	38	U.M.S. Kharanti North
18	U.M.S. Bhojpur	39	U.M.S. Kharanti South
19	U.M.S. Kanya Nawadih North	40	S.S. High School Pandeyypura East
20	U.M.S. Kanya Nawadih South	41	S.S. High School Pandeyypura West
21	U.M.S. Kanya Nawadih Middle	42	S.S. High School Pandeyypura Middle

Contd....

Polling Station Level Election Results

Polling Station-wise Votes Secured by Overall Top Five Parties in Chatra Assembly in Assembly Election (AE) under Chatra Parliamentary Constituency in Jharkhand (2019)

Number of Polling Station	Winner - Satyanand Bhokta (RJD)	Runner-up - Janardan Paswan (BJP)	3rd - Kedar Bhuiyan (JD(U))	4th - Tileshwar Ram (JVM)	5th - Goutam Ravidas (BSP)	NOTA	Other	Total Votes Secured
36	215	44	24	4	4	8	6	305
37	353	171	25	13	18	30	55	665
38	179	176	18	7	6	11	36	433
39	287	101	16	10	9	17	31	471
40	219	114	15	4	12	9	25	398
41	214	62	22	4	3	9	18	332
42	324	128	37	8	25	40	56	618
43	80	216	11	5	3	3	24	342
44	208	159	12	6	3	5	20	413
45	165	283	12	24	12	15	23	534
46	321	219	22	10	8	20	65	665
47	155	50	15	5	8	31	110	374
48	198	105	14	9	3	10	52	391
49	136	150	5	4	6	13	42	356
50	89	236	4	13	5	5	19	371
51	308	158	11	6	8	8	27	526
52	289	158	30	12	16	18	51	574
53	265	189	15	6	15	29	70	589
54	203	113	20	4	11	7	60	418
55	154	139	8	3	11	5	20	340
56	196	197	12	11	8	10	30	464
57	312	233	15	12	15	12	53	652
58	311	34	9	4	20	5	13	396
59	257	52	17	5	15	10	14	370
60	208	60	7	1	3	18	93	390
61	325	79	19	2	3	6	32	466
62	215	265	5	4	5	5	11	510
63	174	228	4	7	3	2	15	433
64	156	350	3	10	6	5	39	569
65	115	171	9	9	11	10	40	365
66	322	190	17	7	12	5	30	583
67	233	177	18	12	8	22	46	516
68	157	145	9	8	5	5	16	345
69	178	162	10	13	5	7	24	399
70	386	215	36	18	16	11	32	714

Contd....

Polling Station Level Election Results

Winner, Runner-up and 3rd Party Position & Winning Margin According to Polling Stations in Chatra Assembly in Assembly Election (AE) under Chatra Parliamentary Constituency in Jharkhand (2019)

Polling Station Number	Winner Party	Winner Votes (%)	Runner-up Party	Runner-up Votes (%)	Winning Margin Votes (%)	Third Party	Third Party Votes (%)	Other Votes (%)
71	RJD	277 (49.82)	BJP	198 (35.61)	79 (14.21)	BSP	14 (2.52)	67 (12.05)
72	BJP	139 (40.17)	RJD	107 (30.92)	32 (9.25)	CPM	50 (14.45)	50 (14.45)
73	RJD	154 (49.52)	BJP	99 (31.83)	55 (17.69)	NAGADHP	15 (4.82)	43 (13.83)
74	BJP	212 (41.49)	RJD	186 (36.4)	26 (5.09)	JD(U)	25 (4.89)	88 (17.22)
75	RJD	311 (61.22)	BJP	104 (20.47)	207 (40.75)	JD(U)	31 (6.1)	62 (12.2)
76	BJP	360 (48.19)	RJD	214 (28.65)	146 (19.54)	RJPB	29 (3.88)	144 (19.28)
77	RJD	374 (62.02)	BJP	89 (14.76)	285 (47.26)	CPM	29 (4.81)	111 (18.41)
78	RJD	169 (48.7)	BJP	82 (23.63)	87 (25.07)	BSP	46 (13.26)	50 (14.41)
79	BJP	179 (54.74)	RJD	92 (28.13)	87 (26.61)	JVM	11 (3.36)	45 (13.76)
80	RJD	302 (45.28)	BJP	287 (43.03)	15 (2.25)	JD(U)	19 (2.85)	59 (8.85)
81	BJP	250 (46.21)	RJD	153 (28.28)	97 (17.93)	BSP	48 (8.87)	90 (16.64)
82	RJD	196 (45.06)	BJP	152 (34.94)	44 (10.12)	JVM	17 (3.91)	70 (16.09)
83	BJP	351 (53.26)	RJD	176 (26.71)	175 (26.55)	IND (KR)	20 (3.03)	112 (17)
84	RJD	273 (53.74)	BJP	152 (29.92)	121 (23.82)	BSP	12 (2.36)	71 (13.98)
85	RJD	286 (50.18)	BJP	177 (31.05)	109 (19.13)	NAGADHP	27 (4.74)	80 (14.04)
86	RJD	241 (60.4)	BJP	108 (27.07)	133 (33.33)	JD(U)	14 (3.51)	36 (9.02)
87	BJP	281 (40.37)	RJD	205 (29.45)	76 (10.92)	CPM	64 (9.2)	146 (20.98)
88	RJD	257 (46.81)	BJP	210 (38.25)	47 (8.56)	JVM	15 (2.73)	67 (12.2)
89	RJD	283 (71.65)	BJP	60 (15.19)	223 (56.46)	JD(U)	15 (3.8)	37 (9.37)
90	BJP	308 (80.63)	RJD	31 (8.12)	277 (72.51)	JVM	10 (2.62)	33 (8.64)
91	RJD	197 (63.14)	BJP	90 (28.85)	107 (34.29)	JVM	10 (3.21)	15 (4.81)
92	BJP	285 (71.43)	RJD	83 (20.8)	202 (50.63)	JVM	14 (3.51)	17 (4.26)
93	BJP	232 (60.42)	RJD	137 (35.68)	95 (24.74)	JVM	5 (1.3)	10 (2.6)
94	RJD	233 (54.95)	BJP	162 (38.21)	71 (16.74)	JVM	11 (2.59)	18 (4.25)
95	BJP	178 (50.86)	RJD	162 (46.29)	16 (4.57)	JD(U)	3 (0.86)	7 (2)
96	BJP	203 (55.92)	RJD	132 (36.36)	71 (19.56)	NAGADHP	5 (1.38)	23 (6.34)
97	BJP	233 (61.97)	RJD	116 (30.85)	117 (31.12)	JVM	5 (1.33)	22 (5.85)
98	RJD	483 (68.8)	BJP	68 (9.69)	415 (59.11)	JD(U)	32 (4.56)	119 (16.95)
99	RJD	359 (52.87)	BJP	127 (18.7)	232 (34.17)	CPM	53 (7.81)	140 (20.62)
100	RJD	199 (39.88)	BJP	193 (38.68)	6 (1.2)	JD(U)	28 (5.61)	79 (15.83)
101	BJP	113 (52.31)	RJD	69 (31.94)	44 (20.37)	CPM	8 (3.7)	26 (12.04)
102	BJP	186 (58.13)	RJD	87 (27.19)	99 (30.94)	BSP	13 (4.06)	34 (10.63)
103	BJP	288 (49.15)	RJD	220 (37.54)	68 (11.61)	JD(U)	13 (2.22)	65 (11.09)
104	RJD	246 (67.96)	BJP	38 (10.5)	208 (57.46)	JD(U)	20 (5.52)	58 (16.02)
105	RJD	172 (63.7)	BJP	41 (15.19)	131 (48.51)	BSP	22 (8.15)	35 (12.96)

Contd....

Socio-Economic Amenities - Rural

Access to Education Facilities

Particulars	Number of Villages (% of Population)				
	Available	Not Available	If Not Available (Distance of Nearest Facility)		
			A	B	C
Govt. Primary School	616 (93)	165 (7)	107 (4)	35 (1)	4 (0)
Private Primary School	93 (15)	688 (85)	0 (0)	0 (0)	0 (0)
Govt. Middle School	298 (62)	483 (38)	317 (24)	125 (10)	27 (2)
Private Middle School	47 (10)	734 (90)	0 (0)	0 (0)	0 (0)
Govt. Secondary School	38 (10)	743 (90)	246 (31)	262 (32)	208 (22)
Private Secondary School	15 (3)	766 (97)	3 (1)	11 (2)	1 (0)
Govt. Senior Secondary School	16 (5)	765 (95)	129 (16)	199 (27)	396 (45)
Private Senior Secondary School	10 (1)	771 (99)	5 (1)	15 (2)	14 (4)
Govt. Arts and Science Degree College	0 (0)	781 (100)	43 (6)	89 (11)	520 (60)
Private Arts and Science Degree College	0 (0)	781 (100)	11 (3)	27 (6)	91 (14)
Govt. Engineering College	0 (0)	781 (100)	0 (0)	15 (2)	741 (95)
Private Engineering College	0 (0)	781 (100)	0 (0)	0 (0)	25 (4)
Govt. Medicine College	0 (0)	781 (100)	0 (0)	15 (2)	741 (95)
Private Medicine College	0 (0)	781 (100)	0 (0)	0 (0)	25 (4)
Govt. Management Institute	0 (0)	781 (100)	0 (0)	15 (2)	741 (95)
Private Management Institute	0 (0)	781 (100)	0 (0)	0 (0)	25 (4)
Govt. Polytechnic	0 (0)	781 (100)	0 (0)	0 (0)	778 (100)
Private Polytechnic	0 (0)	781 (100)	0 (0)	0 (0)	3 (0)
Govt. Vocational Training School/ITI	0 (0)	781 (100)	0 (0)	4 (0)	773 (99)
Private Vocational Training School/ITI	0 (0)	781 (100)	0 (0)	0 (0)	4 (1)
Govt. Non Formal Training Centre	0 (0)	781 (100)	35 (3)	62 (7)	658 (86)
Private Non Formal Training Centre	0 (0)	781 (100)	5 (1)	6 (1)	15 (2)
Govt. School For Disabled	0 (0)	781 (100)	32 (4)	69 (9)	619 (82)
Private School For Disabled	0 (0)	781 (100)	0 (0)	1 (0)	60 (6)
Government Others	0 (0)	781 (100)	0 (0)	15 (2)	741 (95)
Private Others	0 (0)	781 (100)	0 (0)	0 (0)	25 (4)

Note : Distance A : Less than 5 km; B : Between 5-10 km; C : 10+ km.; Source : Data Analysis is based on 2011 Census.

DISCLAIMER

The Terms of Use and Disclaimer of Datanet India Private Limited (hereinafter referred to as "Datanet") for use of this analysis report of **Chatra Assembly Constituency (Chatra Vidhan Sabha)** :-

1. **Assembly Factbook™** is a Registered Trade Mark owned by Datanet.
2. All the maps are sketched and graphical representation only and have not been drawn to the scale and also not to represent the actual geographical area or boundary of the unit.
3. The data for the aforesaid analysis is based on authentic sources and has been culled from the various publications of Census, CSO and NSSO for district and block level data, various central and state government departments, Central & State Elections Commissions and the concerned Returning Officers' releases, Electoral Rolls, Election results and allied publications, internal assessment, surveys, estimates and analysis. Therefore, certain adjustment of data at micro level may have been done to arrive closer to the macro data.
4. Data have been provided on an "As Is" and "As AVAILABLE" basis
5. The colours shown in the maps or diagram and charts of a particular party, alliance or AC are indicative and do not represent them.
6. This publication which includes maps, sheets, graphs and data would be the property under copyright of Datanet only. The user may use these for its internal study, analysis and research purposes. It's public display, re-selling or any commercial uses by the user are not allowed.
7. Datanet has taken due care and caution in compilation and processing of data and allied information, but does not guarantee the accuracy, adequacy or completeness of any information/analysis and will be not responsible for any errors or omissions or for the results obtained from the use of such information/analysis.
8. All the contents for the publication have been culled from various authentic sources and Datanet reasonably believes such sources to be reliable, but does not make any representations, express or implied as to the accuracy or fitness of use of such information. The information or contents of the information/analysis do not constitute advice and should not be relied upon in making (or refraining from making) any decision. Any reliance placed upon the information provided by Datanet is the sole responsibility and strictly at the user's risk.
9. In no event will Datanet be liable for any damages (including, without limitation, damages for loss of business projects, or loss of profits) arising in contract, tort or otherwise from the use of or inability to use any of its contents, or from any action taken (or refrained from being taken) as a result of using the analysis or any of its contents. Datanet its directors, owners, editors, officials, employees, distributor and agents or any associate will not be liable for any errors in the information contained or any consequences arising from the use of the contents of the provided information/analysis.
10. If any provision of these terms and conditions is held invalid or illegal or unenforceable for any reason by any court of competent jurisdiction, such provision shall be severed and the remainder of provisions of the terms and conditions shall continue in full force and effect as if the Term of Use had been executed with the invalid, illegal or unenforceable provision eliminated.
11. If there are any discrepancies in the information provided, please bring it to attention of Datanet for suitable rectification measures.

**Buy Online This Complete Book At
Datanet India eBooks Store**

www.indiastatpublications.com

or go directly at

**[http://www.indiastatpublications.com/
Assembly_factbook/Jharkhand/Chatra/ Chatra](http://www.indiastatpublications.com/Assembly_factbook/Jharkhand/Chatra/Chatra)**

 **indiastat**elections

ISBN : 978-93-5301-962-4



9 789353 019624