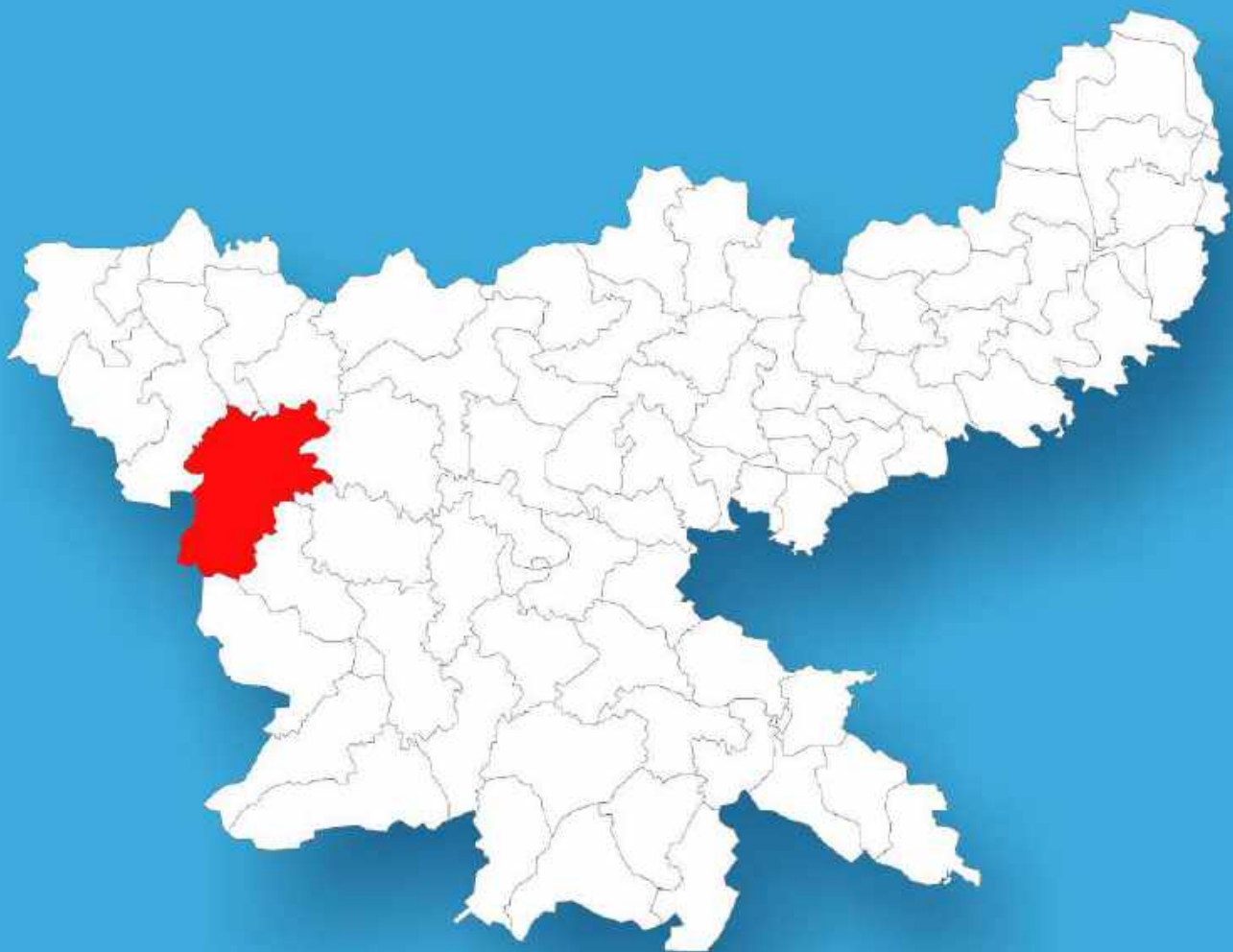




Jharkhand

# Assembly Factbook™

Manika Assembly Constituency



Key Electoral Data of Manika  
Assembly Constituency (Vidhan Sabha)

Jharkhand

# **Assembly Factbook™**

Manika Assembly Constituency



Manika Vidhan Sabha

## **Editor & Director**

Dr. R.K. Thukral

## **Research Editor**

Dr. Shafeeq Rahman

## **Compiled, Researched and Published by Datanet India Pvt. Ltd.**

D-100, 1st Floor,

Okhla Industrial Area, Phase-I,  
New Delhi- 110020.

Ph.: 91-11- 43580781-84

Email : support@indiastatpublications.com

Website : www.indiastatelections.com

## **Online Book Store :**

www.indiastatpublications.com

**Report No. :** AFB/JH-73-0125

**ISBN :** 978-93-5313-005-3

**First Edition :** January, 2018

**Eighth Updated Edition :** January, 2025

**Price :** Rs. 11500/-

US\$ 310

**© Datanet India Pvt. Ltd.**

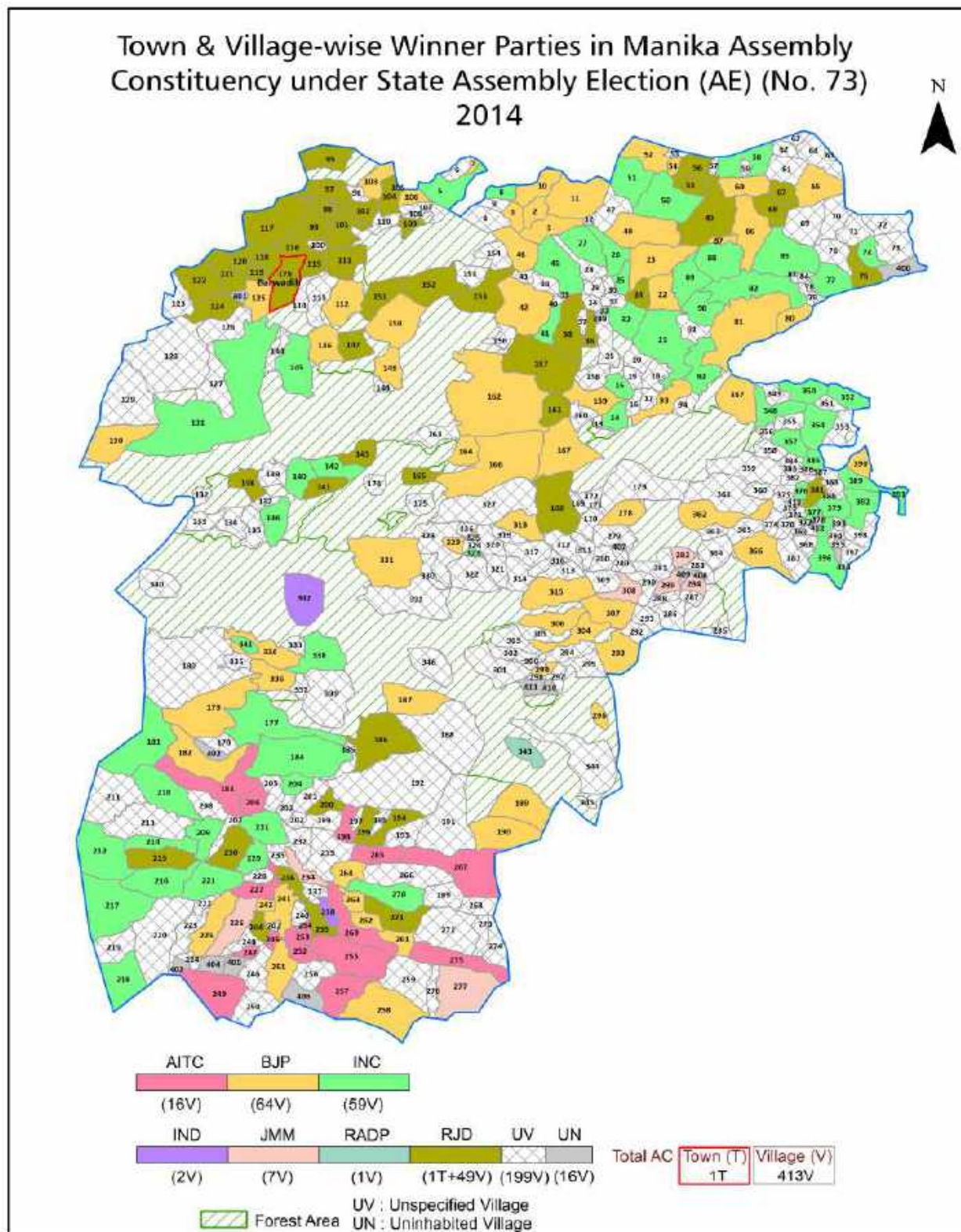
All rights reserved. No part of this book may be reproduced, stored in a retrieval system or transmitted in any form or by any means, mechanical photocopying, photographing, scanning, recording or otherwise without the prior written permission of the publisher. Please refer to Disclaimer at page no. 238 for the use of this publication.

Printed in India

No.	Particulars	Page No.
	<b>Introduction</b>	
1	Assembly Constituency - (Vidhan sabha) at a Glance   Features of Assembly as per Delimitation Commission of India (2008)	1-2
	<b>Location and Political Maps</b>	
2	Location Map   Boundaries of Assembly Constituency - (Vidhan sabha in District   Boundaries of Assembly Constituency under Parliamentary Constituency - (Lok sabha)   Town & Village-wise Winner Parties- 2024-PE, 2024-AE, 2019-PE, 2019-AE, 2014-PE, 2014-AE, 2009-PE and 2009-AE	3-11
	<b>Administrative Setup (2011)</b>	
3	District   Sub-district   Towns   Villages   Inhabited Villages   Uninhabited Villages   Village Panchayat   Intermediate Panchayat	12-31
	<b>Demographics (2011)</b>	
4	Population   Households   Rural/Urban Population   Towns and Villages by Population Size   Sex Ratio (Total & 0-6 Years)   Religious Population   Social Population   Literacy Rate	32-33
	<b>Electoral Features</b>	
5	Important Dates of Last Elections Held   Electors by Gender   Service Electors   Voters   Voters Turnout   Polling Stations & Average Number of Electors per Polling Station   Electors by Age Group   Present Elected Representatives	34-39
	<b>Historical Summary Election Results</b>	
6	Vote Share of Major Parties   Winning Margin (Number & Percentage   Polarity of Parties   Summary Result of Assembly Segment of Parliamentary Elections 2024, 2019, 2014, 2009 and 2004   Summary Result of Assembly Elections 2024, 2019, 2014, 2009 and 2005	40-51
	<b>Polling Station Level Election Results</b>	
7	Name and Number of Polling Station 2024-PE, 2024-AE, 2019-PE, 2019-AE, 2014-PE, 2014-AE, 2009-PE and 2009-AE   Polling Station-wise Electors, Voters & Voters Turnout 2024-PE, 2024-AE, 2019-PE, 2019-AE, 2014-PE, 2014-AE, 2009-PE and 2009-AE   Polling Station wise Elections Results 2024-PE, 2024-AE, 2019-PE, 2019-AE, 2014-PE, 2014-AE, 2009-PE and 2009-AE	52-215
	<b>Share of Assembly Constituency</b>	
8	Share of Assembly Constituency - (Vidhan sabha) in State, District and Parliamentary Constituency - (Lok sabha)	216
	<b>Socio-Economic Amenities (2011)</b>	
9	Access to Administrative Units   Agricultural, Manufacturing and Industrial Commodities   Demographic Indicators   Education   Health & Manpower   Drinking Water Supply   Sanitation   Entertainment and Recreations Infrastructure   Power   Food Allocation Distribution and Marketing of Agriculture Commodities Infrastructure   Transport and Road Infrastructure   Communication   Banking and Financial Services   Land Use   Irrigation Source	218-232
10	<b>Abbreviation &amp; Sources</b>	234-236
11	<b>Disclaimer</b>	238



## Location & Political Map



## Administrative Setup

### List of Village Panchayat & Intermediate Panchayat (Block) Name - 2011

Village Name	Village Panchayat Name	Intermediate Panchayat Name
Adhe	Netarhat	Mahuadanr
Agardih Mandhania	Janho	Manika
Aghra	Betla	Barwadih
Ahirpurwa	Chainpur	Mahuadanr
Aigu	Netarhat	Mahuadanr
Akhra	Betla	Barwadih
Aksi	Aksi	Mahuadanr
Alagdiha	Chorha	Garu
Ambatkar	Barkadih	Manika
Amboatoli	Amboatoli	Mahuadanr
Amdiha	Mangra	Barwadih
Antikheta	Barkadih	Manika
Ara	Bishnubhand	Manika
Arahans	Sohar	Mahuadanr
Armua Alis Marchaia	Dhangar Tola	Garu
Asnari	-	Mahuadanr
Aunratnr	Jugur	Manika
Aunratoli Alias Khapartola	Chainpur	Mahuadanr
Babhandih	Khura	Barwadih
Bachra	Bendi	Latehar
Baheratanr	Tarwadih	Latehar
Baheratoli	Chainpur	Mahuadanr
Baherwa Tola	Karwai	Garu
Baigatoli	Kotam	Garu
Bajajpur	Rud	Garu
Bajkum	Dhankara	Latehar
Bakoria	Bakoria	Satbarwa
Bamdua	Aksi	Mahuadanr
Bandua	Bandua	Manika

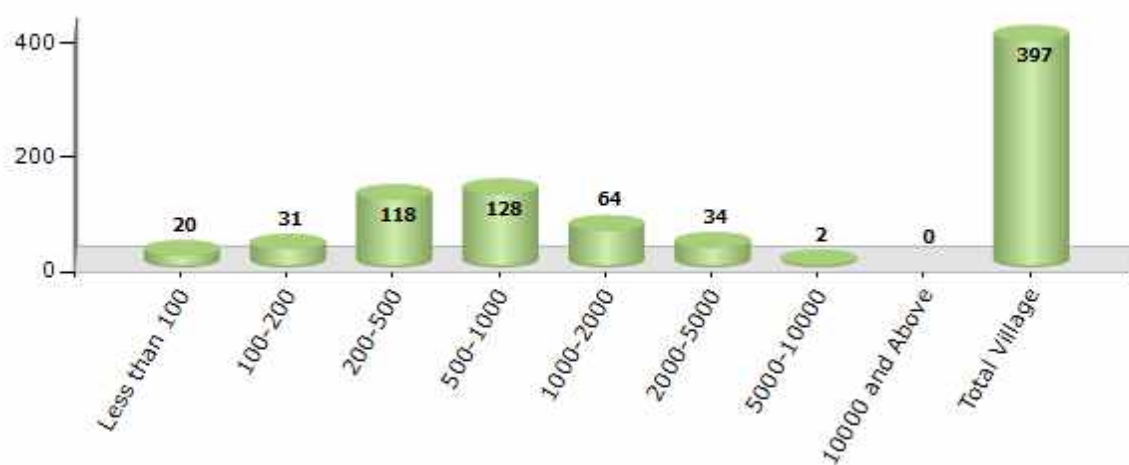
Contd....

## Demographics

### Number of Villages by Population Size - 2011

Less than 100	100-200	200-500	500-1000	1000-2000	2000-5000	5000-10000	10000 and Above	Total Village
20	31	118	128	64	34	2	0	397

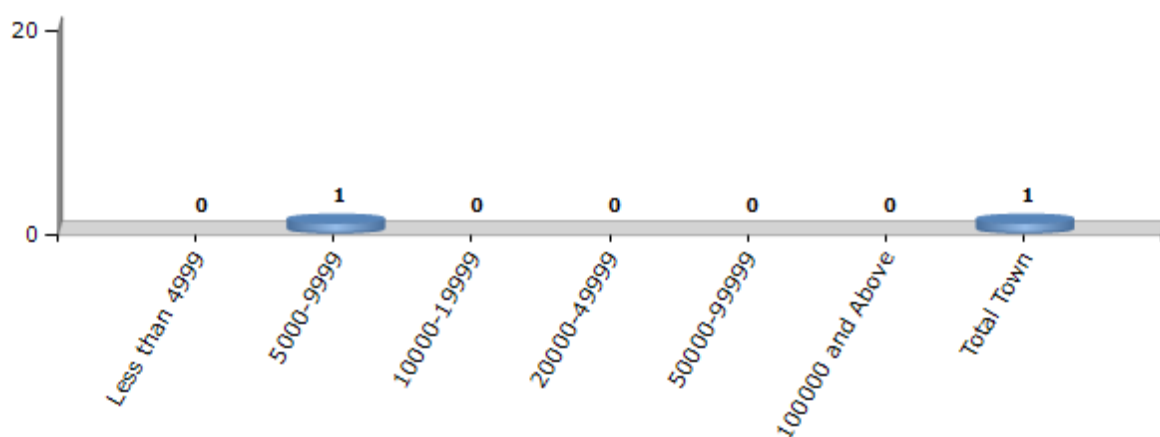
Number of Villages by Population Size - 2011



### Number of Towns by Population Size - 2011

Less than 4999	5000-9999	10000-19999	20000-49999	50000-99999	100000 and Above	Total Town
0	1	0	0	0	0	1

Number of Towns by Population Size - 2011

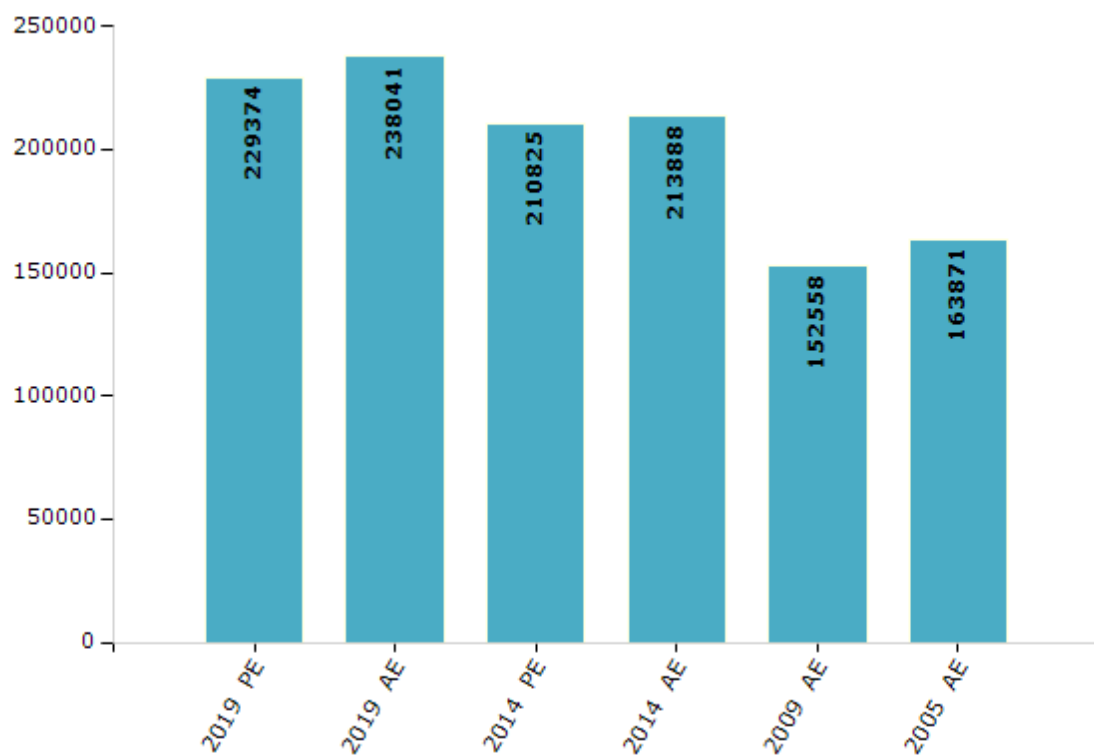


## Electoral Features

### Electors by Male & Female

Year	Male	Female	Others	Total	Year	Male	Female	Others	Total
2019 PE	118271	111103	0	229374	2009 PE	-	-	-	-
2019 AE	121752	116289	0	238041	2009 AE	79515	73043	-	152558
2014 PE	109567	101258	0	210825	2005 AE	86056	77815	-	163871
2014 AE	110991	102897	0	213888	2004 PE	-	-	-	-

Number of Electors



**Note :** AE : Assembly Election, PE : Assembly Segment of Parliamentary Election

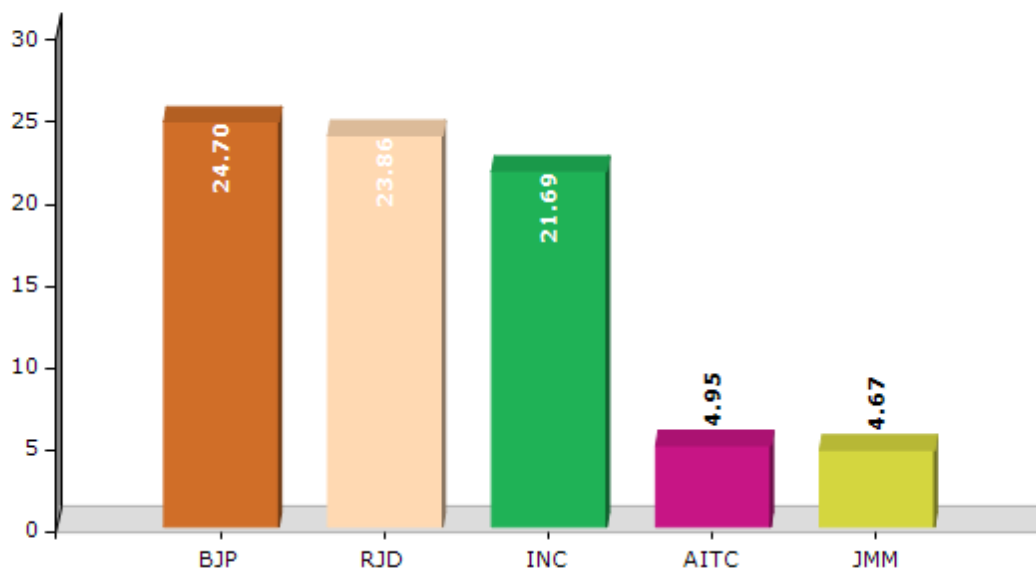


## Historical Summary Election Results

### Summary Result of Assembly Election - 2014

Candidate Name	Party	Votes	Votes %
Harikrishn Singh	BJP	31583	24.7
Ramchandra Singh	RJD	30500	23.86
Muneshwar Oraon	INC	27731	21.69
Neera Devi	AITC	6326	4.95
Shilpa Kumari	JMM	5975	4.67
Anita Minj	IND	4750	3.72
Ganesh Bhagat	CPI	4027	3.15
Bachan Singh	IND	2981	2.33
Raj Kumar Pahan	RADP	2633	2.06
Umashankar Baiga	IND	1932	1.51
Paul Ekka	JKP	1779	1.39
Rajmuni Kunwar	BSP	1583	1.24
Nirjal Kumar Singh	JBSP	1385	1.08
	NOTA	4660	3.65

Votes Percentage of Top Parties - 2014



## Polling Station Level Election Results

### Number and Name of Polling Stations (PS) (2019 AE)

Number of Polling Stations	Name of Polling Stations	Number of Polling Stations	Name of Polling Stations
1	M.S. Kechki E. Part	22	M.S. Murgidih
2	M.S. Kechki W. Part	23	M.S. Barwadih N. Part
3	U.M.S. Kachanpur	24	M.S. Barwadih M. Part
4	U.H.S. Saridih East Part	25	Old Panchayat Bhawan Barwadih
5	U.H.S. Saridih W. Part	26	Samudaik Bhawan Barwadih
6	M.S. Pokhrikala E. Part	27	G.M.S. Barwadih E. Part
7	M.S. Pokhrikala W. Part	28	G.M.S. Barwadih W. Part
8	M.S. Pokhrikala N. Part.	29	Railway Club Barwadih E. Part
9	Panchayat Bhawan Pokhrikala N. Part	30	Railway Club Barwadih W. Part
10	Panchayat Bhawan Pokhrikala S. Part	31	M.S. Babhandih E. Part
11	P.S. Pokhrikhurd E. Part	32	M.S. Babhandih W. Part
12	P.S. Pokhrikhurd W. Part	33	H.S. Barwadih E. Part
13	U.M.S. Kutmu E. Part	34	H.S. Barwadih W. Part
14	U.M.S. Kutmu W. Part	35	P.S. Lanka
15	Urdu U.M.S. Betla W. Part	36	H.S. Barwadih M. Part
16	Urdu U.M.S. Betla E. Part	37	U.M.S. Chapri N. Part
17	P.S. Dorami	38	U.M.S. Chapri S. Part
18	U.M.S. Kalyanpur	39	U.H.S. Chhencha S. Part
19	U.M.S. Amdiha	40	U.H.S. Chhencha W. Part
20	U.H.S. Mangra E. Part	41	U.H.S. Chhencha N. Part
21	U.H.S. Mangra W. Part	42	U.H.S. Chhencha E. Part

Contd....

## Polling Station Level Election Results

### Polling Station-wise Votes Secured by Overall Top Five Parties in Manika Assembly in Assembly Election (AE) under Chatra Parliamentary Constituency in Jharkhand (2019)

Number of Polling Station	Winner - Ramchandra Singh (INC)	Runner-up - Raghupal Singh (BJP)	3rd - Victor Kerketta (SP)	4th - Hardayal Singh (BSP)	5th - Ram Lagan Singh (IND)	NOTA	Other	Total Votes Secured
36	143	140	2	4	2	9	6	306
37	231	168	9	7	3	9	8	435
38	245	109	14	6	6	10	35	425
39	236	127	7	3	3	12	9	397
40	335	78	11	4	2	6	7	443
41	262	180	19	6	9	17	23	516
42	176	64	10	6	3	6	50	315
43	285	269	16	8	5	14	20	617
44	419	111	10	6	10	9	9	574
45	412	134	19	9	10	22	14	620
46	166	115	21	3	9	39	28	381
47	155	187	20	5	6	11	10	394
48	173	255	9	7	9	23	15	491
49	453	53	8	10	4	2	9	539
50	168	176	15	7	10	45	18	439
51	133	83	17	8	3	26	19	289
52	95	149	11	5	6	12	21	299
53	269	75	24	9	5	18	15	415
54	246	71	16	15	4	16	24	392
55	151	100	11	11	5	18	13	309
56	137	170	4	3	7	23	14	358
57	186	276	18	5	11	35	29	560
58	303	152	40	11	16	57	39	618
59	165	302	13	7	9	35	24	555
60	317	168	22	15	9	17	32	580
61	178	102	17	10	7	14	13	341
62	241	207	12	11	4	14	15	504
63	416	270	20	62	10	33	26	837
64	154	170	13	6	5	10	17	375
65	225	143	3	2	5	5	5	388
66	121	326	17	7	8	40	15	534
67	131	240	4	2	8	23	14	422
68	136	262	7	6	11	36	20	478
69	142	297	7	2	15	26	14	503
70	252	236	9	3	7	6	5	518

Contd....

## Polling Station Level Election Results

**Winner, Runner-up and 3rd Party Position & Winning Margin According to Polling Stations in Manika Assembly in Assembly Election (AE) under Chatra Parliamentary Constituency in Jharkhand (2019)**

Polling Station Number	Winner Party	Winner Votes (%)	Runner-up Party	Runner-up Votes (%)	Winning Margin Votes (%)	Third Party	Third Party Votes (%)	Other Votes (%)
71	BJP	225 (44.12)	INC	220 (43.14)	5 (0.98)	SP	9 (1.76)	56 (10.98)
72	BJP	270 (52.53)	INC	152 (29.57)	118 (22.96)	IND (Ram Lag	12 (2.33)	80 (15.56)
73	BJP	236 (51.3)	INC	96 (20.87)	140 (30.43)	CPI(ML)(L)	54 (11.74)	74 (16.09)
74	BJP	181 (36.79)	INC	130 (26.42)	51 (10.37)	CPI(ML)(L)	114 (23.17)	67 (13.62)
75	INC	273 (43.54)	BJP	264 (42.11)	9 (1.43)	SP	19 (3.03)	71 (11.32)
76	BJP	218 (61.41)	INC	95 (26.76)	123 (34.65)	CPI(ML)(L)	9 (2.54)	33 (9.3)
77	CPI(ML)(L)	115 (29.72)	BJP	104 (26.87)	11 (2.85)	INC	99 (25.58)	69 (17.83)
78	CPI(ML)(L)	150 (35.89)	INC	101 (24.16)	49 (11.73)	BJP	85 (20.33)	82 (19.62)
79	INC	364 (56.52)	BJP	211 (32.76)	153 (23.76)	SP	14 (2.17)	55 (8.54)
80	INC	256 (45.96)	BJP	210 (37.7)	46 (8.26)	SP	20 (3.59)	71 (12.75)
81	INC	252 (51.53)	BJP	151 (30.88)	101 (20.65)	CPI(ML)(L)	28 (5.73)	58 (11.86)
82	BJP	265 (52.17)	INC	170 (33.46)	95 (18.71)	SP	12 (2.36)	61 (12.01)
83	INC	285 (51.35)	BJP	196 (35.32)	89 (16.03)	IND (Ram Lag	16 (2.88)	58 (10.45)
84	BJP	279 (52.74)	INC	171 (32.33)	108 (20.41)	SP	17 (3.21)	62 (11.72)
85	INC	303 (54.2)	BJP	164 (29.34)	139 (24.86)	SP	25 (4.47)	67 (11.99)
86	BJP	291 (69.62)	INC	96 (22.97)	195 (46.65)	JVM	12 (2.87)	19 (4.55)
87	BJP	245 (61.56)	INC	126 (31.66)	119 (29.9)	SP	4 (1.01)	23 (5.78)
88	BJP	274 (61.3)	INC	122 (27.29)	152 (34.01)	SP	9 (2.01)	42 (9.4)
89	BJP	250 (48.26)	INC	233 (44.98)	17 (3.28)	JVM	7 (1.35)	28 (5.41)
90	BJP	220 (62.68)	INC	89 (25.36)	131 (37.32)	IND (Ram Lag	10 (2.85)	32 (9.12)
91	BJP	316 (77.45)	INC	69 (16.91)	247 (60.54)	JVM	7 (1.72)	16 (3.92)
92	BJP	421 (57.36)	INC	279 (38.01)	142 (19.35)	BSP	12 (1.63)	22 (3)
93	BJP	469 (69.58)	INC	150 (22.26)	319 (47.32)	BSP	18 (2.67)	37 (5.49)
94	INC	354 (50.28)	BJP	288 (40.91)	66 (9.37)	SP	12 (1.7)	50 (7.1)
95	BJP	286 (62.04)	INC	132 (28.63)	154 (33.41)	IND (Ram Lag	9 (1.95)	34 (7.38)
96	INC	228 (49.35)	BJP	174 (37.66)	54 (11.69)	BSP	10 (2.16)	50 (10.82)
97	INC	262 (47.99)	BJP	216 (39.56)	46 (8.43)	BSP	15 (2.75)	53 (9.71)
98	BJP	252 (46.32)	INC	186 (34.19)	66 (12.13)	BSP	45 (8.27)	61 (11.21)
99	BJP	305 (57.55)	INC	170 (32.08)	135 (25.47)	IND (Ram Lag	9 (1.7)	46 (8.68)
100	BJP	249 (41.99)	INC	210 (35.41)	39 (6.58)	BSP	28 (4.72)	106 (17.88)
101	INC	214 (49.54)	BJP	147 (34.03)	67 (15.51)	SP	16 (3.7)	55 (12.73)
102	BJP	218 (49.32)	INC	177 (40.05)	41 (9.27)	SP	10 (2.26)	37 (8.37)
103	INC	336 (62.57)	BJP	170 (31.66)	166 (30.91)	BSP	6 (1.12)	25 (4.66)
104	BJP	283 (54.42)	INC	175 (33.65)	108 (20.77)	BSP	14 (2.69)	48 (9.23)
105	INC	424 (59.63)	BJP	249 (35.02)	175 (24.61)	BSP	10 (1.41)	28 (3.94)

Contd....

## Socio-Economic Amenities - Rural

### Access to Education Facilities

Particulars	Number of Villages (% of Population)				
	Available	Not Available	If Not Available (Distance of Nearest Facility)		
			A	B	C
Govt. Primary School	359 (98)	38 (2)	25 (1)	6 (0)	7 (1)
Private Primary School	24 (11)	373 (89)	0 (0)	0 (0)	0 (0)
Govt. Middle School	185 (71)	212 (29)	111 (15)	72 (10)	27 (4)
Private Middle School	14 (6)	383 (94)	0 (0)	1 (0)	1 (0)
Govt. Secondary School	12 (7)	385 (93)	65 (22)	135 (33)	180 (36)
Private Secondary School	6 (3)	391 (97)	0 (0)	0 (0)	1 (0)
Govt. Senior Secondary School	4 (4)	393 (96)	23 (5)	66 (20)	304 (71)
Private Senior Secondary School	0 (0)	397 (100)	0 (0)	0 (0)	0 (0)
Govt. Arts and Science Degree College	0 (0)	397 (100)	1 (0)	22 (5)	374 (95)
Private Arts and Science Degree College	0 (0)	397 (100)	0 (0)	0 (0)	0 (0)
Govt. Engineering College	0 (0)	397 (100)	0 (0)	0 (0)	10 (4)
Private Engineering College	0 (0)	397 (100)	0 (0)	1 (1)	386 (95)
Govt. Medicine College	0 (0)	397 (100)	0 (0)	0 (0)	397 (100)
Private Medicine College	0 (0)	397 (100)	0 (0)	0 (0)	0 (0)
Govt. Management Institute	0 (0)	397 (100)	0 (0)	0 (0)	397 (100)
Private Management Institute	0 (0)	397 (100)	0 (0)	0 (0)	0 (0)
Govt. Polytechnic	0 (0)	397 (100)	0 (0)	10 (3)	387 (97)
Private Polytechnic	0 (0)	397 (100)	0 (0)	0 (0)	0 (0)
Govt. Vocational Training School/ITI	0 (0)	397 (100)	0 (0)	1 (0)	396 (100)
Private Vocational Training School/ITI	0 (0)	397 (100)	0 (0)	0 (0)	0 (0)
Govt. Non Formal Training Centre	0 (0)	397 (100)	0 (0)	2 (1)	10 (4)
Private Non Formal Training Centre	0 (0)	397 (100)	1 (0)	7 (1)	377 (94)
Govt. School For Disabled	0 (0)	397 (100)	0 (0)	0 (0)	397 (100)
Private School For Disabled	0 (0)	397 (100)	0 (0)	0 (0)	0 (0)
Government Others	0 (0)	397 (100)	0 (0)	0 (0)	385 (95)
Private Others	0 (0)	397 (100)	3 (1)	9 (4)	0 (0)

Note : Distance A : Less than 5 km; B : Between 5-10 km; C : 10+ km.; Source : Data Analysis is based on 2011 Census.



## DISCLAIMER

The Terms of Use and Disclaimer of Datanet India Private Limited (hereinafter referred to as "Datanet") for use of this analysis report of **Manika Assembly Constituency (Manika Vidhan Sabha)** :-

1. **Assembly Factbook™** is a Registered Trade Mark owned by Datanet.
2. All the maps are sketched and graphical representation only and have not been drawn to the scale and also not to represent the actual geographical area or boundary of the unit.
3. The data for the aforesaid analysis is based on authentic sources and has been culled from the various publications of Census, CSO and NSSO for district and block level data, various central and state government departments, Central & State Elections Commissions and the concerned Returning Officers' releases, Electoral Rolls, Election results and allied publications, internal assessment, surveys, estimates and analysis. Therefore, certain adjustment of data at micro level may have been done to arrive closer to the macro data.
4. Data have been provided on an "As Is" and "As AVAILABLE" basis
5. The colours shown in the maps or diagram and charts of a particular party, alliance or AC are indicative and do not represent them.
6. This publication which includes maps, sheets, graphs and data would be the property under copyright of Datanet only. The user may use these for its internal study, analysis and research purposes. It's public display, re-selling or any commercial uses by the user are not allowed.
7. Datanet has taken due care and caution in compilation and processing of data and allied information, but does not guarantee the accuracy, adequacy or completeness of any information/analysis and will be not responsible for any errors or omissions or for the results obtained from the use of such information/analysis.
8. All the contents for the publication have been culled from various authentic sources and Datanet reasonably believes such sources to be reliable, but does not make any representations, express or implied as to the accuracy or fitness of use of such information. The information or contents of the information/analysis do not constitute advice and should not be relied upon in making (or refraining from making) any decision. Any reliance placed upon the information provided by Datanet is the sole responsibility and strictly at the user's risk.
9. In no event will Datanet be liable for any damages (including, without limitation, damages for loss of business projects, or loss of profits) arising in contract, tort or otherwise from the use of or inability to use any of its contents, or from any action taken (or refrained from being taken) as a result of using the analysis or any of its contents. Datanet its directors, owners, editors, officials, employees, distributor and agents or any associate will not be liable for any errors in the information contained or any consequences arising from the use of the contents of the provided information/analysis.
10. If any provision of these terms and conditions is held invalid or illegal or unenforceable for any reason by any court of competent jurisdiction, such provision shall be severed and the remainder of provisions of the terms and conditions shall continue in full force and effect as if the Term of Use had been executed with the invalid, illegal or unenforceable provision eliminated.
11. If there are any discrepancies in the information provided, please bring it to attention of Datanet for suitable rectification measures.

**Buy Online This Complete Book At**  
**Datanet India eBooks Store**

[www.indiastatpublications.com](http://www.indiastatpublications.com)

or go directly at

[http://www.indiastatpublications.com/  
Assembly\\_factbook/Jharkhand/Chatra/ Manika](http://www.indiastatpublications.com/Assembly_factbook/Jharkhand/Chatra/Manika)

 **indiaSTAT**elections

ISBN : 978-93-5313-005-3

