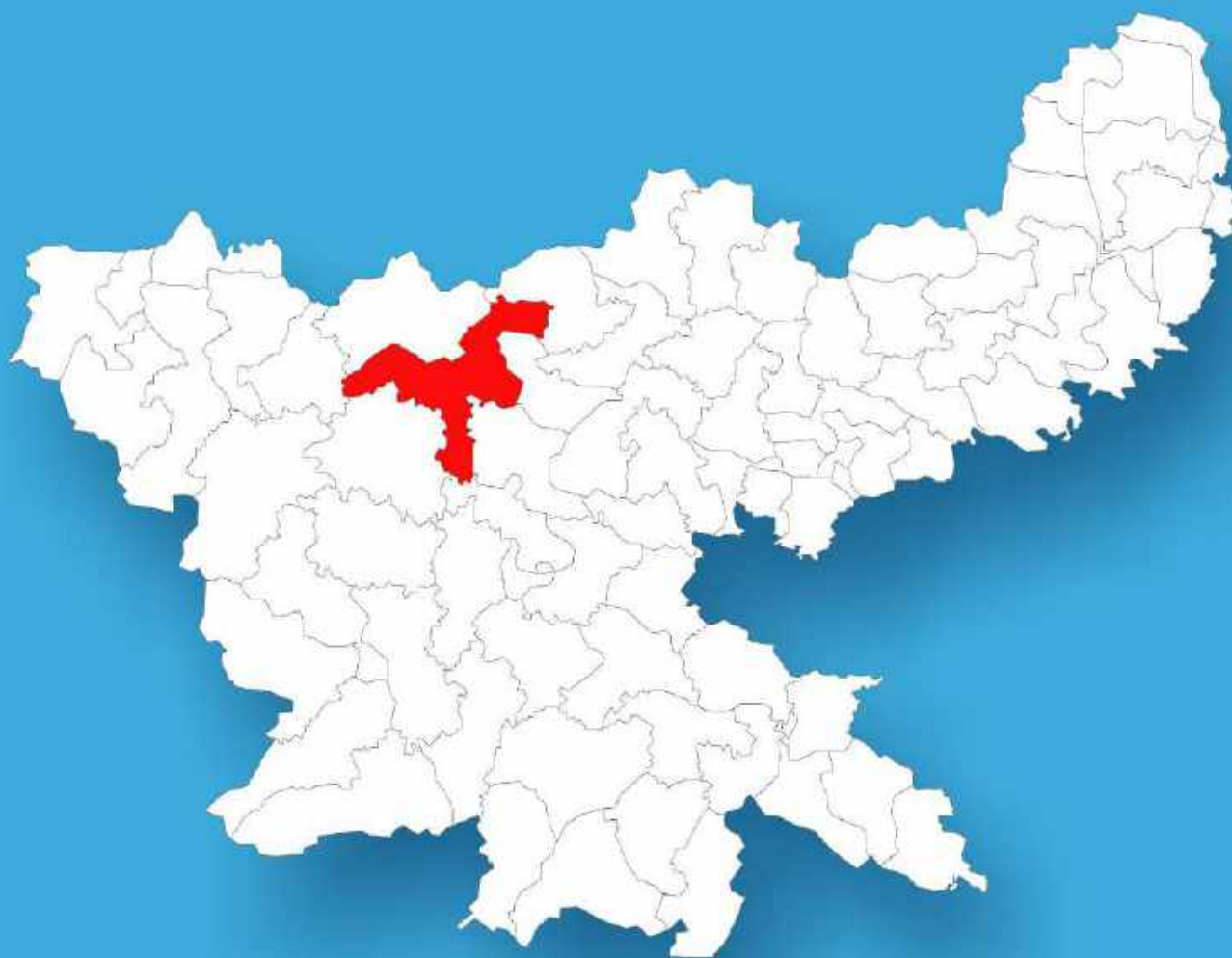




Jharkhand

Assembly Factbook™

Simaria Assembly Constituency



Key Electoral Data of Simaria
Assembly Constituency (Vidhan Sabha)

Jharkhand

Assembly Factbook™

Simaria Assembly Constituency



Simaria Vidhan Sabha

Editor & Director

Dr. R.K. Thukral

Research Editor

Dr. Shafeeq Rahman

Compiled, Researched and Published by Datanet India Pvt. Ltd.

D-100, 1st Floor,

Okhla Industrial Area, Phase-I,
New Delhi- 110020.

Ph.: 91-11- 43580781-84

Email : support@indiastatpublications.com

Website : www.indiastatelections.com

Online Book Store :

www.indiastatpublications.com

Report No. : AFB/JH-26-0125

ISBN : 978-93-5313-020-6

First Edition : January, 2018

Eighth Updated Edition : January, 2025

Price : Rs. 11500/-

US\$ 310

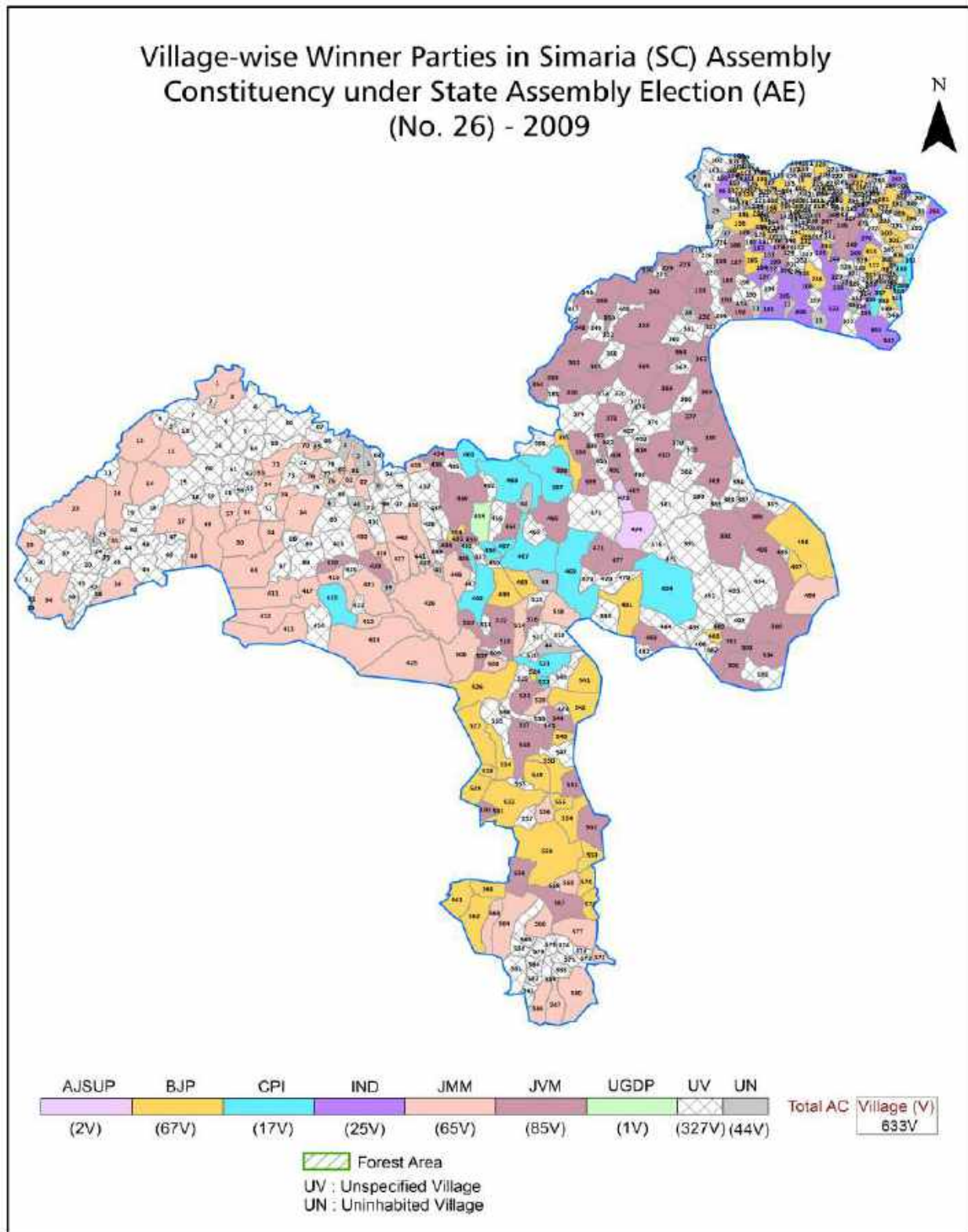
© Datanet India Pvt. Ltd.

All rights reserved. No part of this book may be reproduced, stored in a retrieval system or transmitted in any form or by any means, mechanical photocopying, photographing, scanning, recording or otherwise without the prior written permission of the publisher. Please refer to Disclaimer at page no. 268 for the use of this publication.

Printed in India

No.	Particulars	Page No.
	Introduction	
1	Assembly Constituency - (Vidhan sabha) at a Glance Features of Assembly as per Delimitation Commission of India (2008)	1-2
	Location and Political Maps	
2	Location Map Boundaries of Assembly Constituency - (Vidhan sabha) in District Boundaries of Assembly Constituency under Parliamentary Constituency - (Lok sabha) Village-wise Winner Parties- 2024-PE, 2024-AE, 2019-PE, 2019-AE, 2014-PE, 2009-PE and 2009-AE	3-11
	Administrative Setup (2011)	
3	District Sub-district Towns Villages Inhabited Villages Uninhabited Villages Village Panchayat Intermediate Panchayat	12-41
	Demographics (2011)	
4	Population Households Rural/Urban Population Villages by Population Size Sex Ratio (Total & 0-6 Years) Religious Population Social Population Literacy Rate	42-43
	Electoral Features	
5	Important Dates of Last Elections Held Electors by Gender Service Electors Voters Voters Turnout Polling Stations & Average Number of Electors per Polling Station Electors by Age Group Present Elected Representatives	44-49
	Historical Summary Election Results	
6	Vote Share of Major Parties Winning Margin (Number & Percentage) Polarity of Parties Summary Result of Assembly Segment of Parliamentary Elections 2024, 2019, 2014, 2009 and 2004 Summary Result of Assembly Elections 2024, 2019, 2014, 2009 and 2005	50-61
	Polling Station Level Election Results	
7	Name and Number of Polling Station 2024-PE, 2024-AE, 2019-PE, 2019-AE, 2014-PE, 2009-PE & 2009-AE Polling Station-wise Electors, Voters & Voters Turnout 2024-PE, 2024-AE, 2019-PE, 2019-AE, 2014-PE, 2009-PE & 2009-AE Polling Station wise Elections Results 2024-PE, 2024-AE, 2019-PE, 2019-AE, 2014-PE, 2009-PE & 2009-AE	62-246
	Share of Assembly Constituency	
8	Share of Assembly Constituency - (Vidhan sabha) in State, District and Parliamentary Constituency - (Lok sabha)	247
	Socio-Economic Amenities (2011)	
9	Access to Administrative Units Agricultural, Manufacturing and Industrial Commodities Demographic Indicators Education Health & Manpower Drinking Water Supply Sanitation Entertainment and Recreations Infrastructure Power Food Allocation Distribution and Marketing of Agriculture Commodities Infrastructure Transport and Road Infrastructure Communication Banking and Financial Services Land Use Irrigation Source	249-262
10	Abbreviation & Sources	264-266
11	Disclaimer	268

Location & Political Map



Administrative Setup

List of Village Panchayat & Intermediate Panchayat (Block) Name - 2011

Village Name	Village Panchayat Name	Intermediate Panchayat Name
3Hulwaria	Misrol	Tandwa
Akona	Katia	Lawalaung
Alagdiha	Kadgawa Kalan	Mayur Hand
Ambatanr	Lamta	Lawalaung
Ambatari	Pandi	Mayur Hand
Amgawan	Piri	Simaria
Amin	Barisakhi	Gidhaur
Aminia	Lamra	Lawalaung
Amjhar	Pandi	Mayur Hand
Angara	Katia	Lawalaung
Angara	Chope	Simaria
Angara Kalan	Nongaon	Pathalgora
Angara Khurd	Nongaon	Pathalgora
Anup Chak	Saharjam	Itkhori
Ara-Atu	Herum	Lawalaung
Ara-Atu	Sabona	Simaria
Arsel	Jirua Khurd	Simaria
Asarhia	Saharjam	Itkhori
Atampur	Lamta	Lawalaung
Bad Bigha	Padumpur	Tandwa
Bagmundi	Karni	Itkhori
Bagra	Bagra	Simaria
Bahagara	Herum	Lawalaung
Bahera	Meral	Pathalgora
Bahera	Bahera	Tandwa
Baheradih	Kolkole	Lawalaung
Bain	Bariatu	Gidhaur
Bajobar	Nawadih Damol 0017	Pathalgora
Bakcho	Malakpur	Itkhori

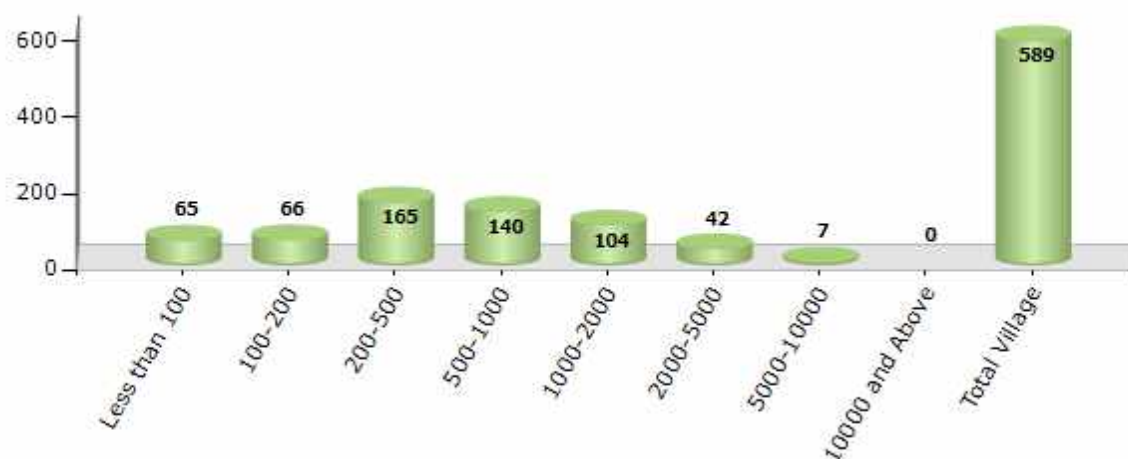
Contd....

Demographics

Number of Villages by Population Size - 2011

Less than 100	100-200	200-500	500-1000	1000-2000	2000-5000	5000-10000	10000 and Above	Total Village
65	66	165	140	104	42	7	0	589

Number of Villages by Population Size - 2011

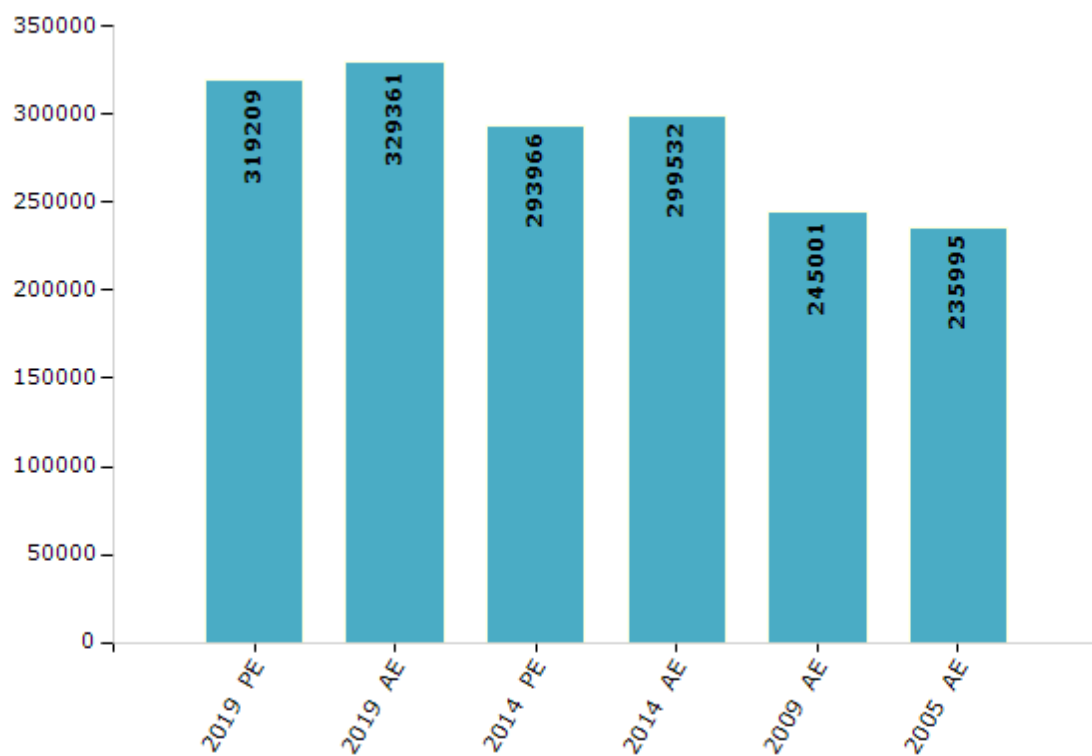


Electoral Features

Electors by Male & Female

Year	Male	Female	Others	Total	Year	Male	Female	Others	Total
2019 PE	169509	149698	2	319209	2009 PE	-	-	-	-
2019 AE	173739	155622	0	329361	2009 AE	128196	116805	-	245001
2014 PE	156747	137219	0	293966	2005 AE	125153	110842	-	235995
2014 AE	159083	140449	0	299532	2004 PE	-	-	-	-

Number of Electors



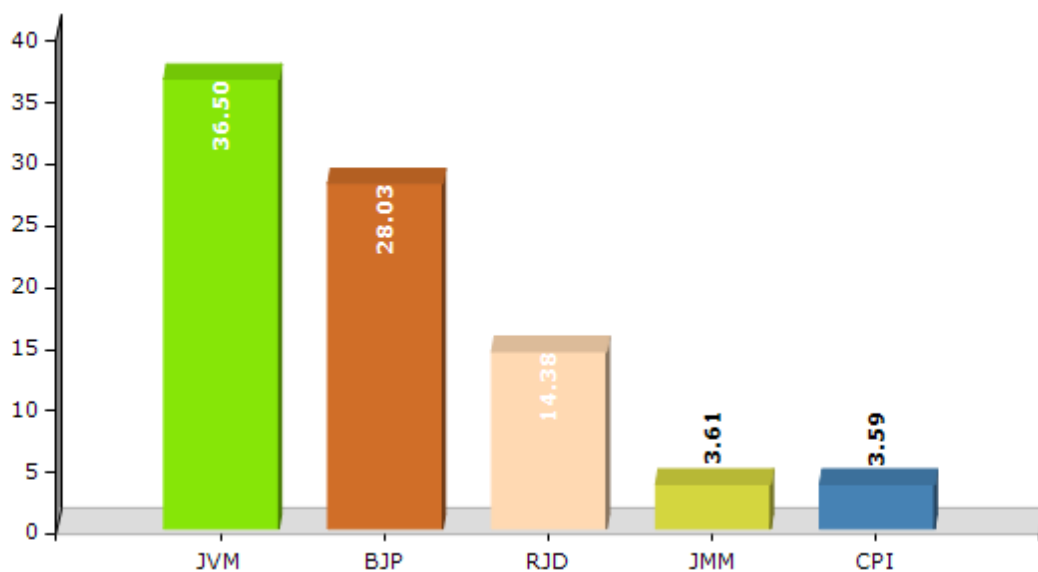
Note : AE : Assembly Election, PE : Assembly Segment of Parliamentary Election

Historical Summary Election Results

Summary Result of Assembly Election - 2014

Candidate Name	Party	Votes	Votes %
Ganesh Ganjhu	JVM	67404	36.5
Sujeet Kumar Bharati	BJP	51764	28.03
Manoj Kumar Chandra	RJD	26560	14.38
Rajkumari Devi	JMM	6671	3.61
Binod Bihari Paswan	CPI	6636	3.59
Sadanand Bhuiyan	JVD	4629	2.51
Sahdeo Ram	IND	2466	1.34
Gulab Ram	IND	2427	1.31
Dineshwar Ram	BSP	2278	1.23
Kumar Diwakar	IND	1936	1.05
Ramanand Das	BASAPA	1762	0.95
Shanker Rajak	SP	1273	0.69
Kamlesh Ganjhu	IND	1268	0.69
	NOTA	7619	4.13

Votes Percentage of Top Parties - 2014



Polling Station Level Election Results

Number and Name of Polling Stations (PS) (2019 AE)

Number of Polling Stations	Name of Polling Stations	Number of Polling Stations	Name of Polling Stations
1	Purv U.M.S. Rampur East	22	M.S. Lawalong South
2	Purv U.M.S. Rampur Middle	23	U.M.S. Bandu
3	Purv U.M.S. Rampur West	24	U.M.S. Madandih
4	U.M.S. Rimi North	25	U.M.S. Paramatu
5	U.M.S. Rimi South	26	U.M.S. Hedum East
6	U.M.S. Mandhaniya	27	U.M.S. Hedum West
7	U.M.S. Hosir	28	U.M.S. Kalyanpur (East)
8	U.M.S. Sikni	29	U.M.S. Kalyanpur (West)
9	U.M.S. Hutru	30	U.M.S. Kochi
10	U.M.S. Banwar	31	U.M.S. Tungun
11	U.M.S. Nawadih South	32	U.M.S. Katiya
12	U.M.S. Tewna	33	U.M.S. Karma
13	U.M.S. Nawadih North	34	U.M.S. Ratnag (West)
14	U.M.S. Tikuliya	35	U.M.S. Ratnag (East)
15	U.M.S. Madawa East	36	U.M.S. Atampur (South)
16	U.M.S. Madwa West	37	U.M.S. Atampur (North)
17	U.M.S. Kolkole West	38	M.S. Lamta (South)
18	U.M.S. Kolkole East	39	M.S. Lamta (North)
19	U.M.S. Dhongadadi Kolkole East	40	U.M.S. Tundag (North)
20	U.M.S. Dhongadadi Kolkole West	41	U.M.S. Tundag (South)
21	M.S. Lawalong North	42	U.M.S. Jirwa Khurd

Contd....

Polling Station Level Election Results

Polling Station-wise Votes Secured by Overall Top Five Parties in Simaria Assembly in Assembly Election (AE) under Chatra Parliamentary Constituency in Jharkhand (2019)

Number of Polling Station	Winner - Kishun Kumar Das (BJP)	Runner-up - Manoj Kumar Chandra (AJSUP)	3rd - Ramadev Singh Bhogta (JVM)	4th - Yogendra Nath Baitha (INC)	5th - Niraj Kumar Niraj (IND)	NOTA	Other	Total Votes Secured
36	281	91	86	22	22	2	38	542
37	163	67	21	83	16	3	23	376
38	166	310	73	22	21	4	93	689
39	176	77	204	28	36	4	78	603
40	254	90	62	18	26	1	43	494
41	196	25	13	5	5	2	9	255
42	141	170	79	14	27	14	88	533
43	233	181	26	2	38	4	83	567
44	32	283	121	24	3	4	50	517
45	125	215	45	30	11	2	51	479
46	63	223	86	55	6	1	55	489
47	166	294	93	52	25	9	77	716
48	228	325	48	26	16	4	54	701
49	105	335	137	26	20	7	104	734
50	72	68	92	308	14	7	66	627
51	54	116	141	171	19	8	81	590
52	48	211	245	57	35	14	173	783
53	97	178	249	40	22	12	116	714
54	39	89	255	21	13	2	32	451
55	158	154	52	6	33	2	56	461
56	152	240	135	7	11	4	62	611
57	237	59	96	65	27	1	65	550
58	159	41	169	11	25	0	31	436
59	197	130	88	12	8	3	65	503
60	177	211	46	10	11	8	42	505
61	205	295	67	24	13	3	100	707
62	381	170	14	111	23	3	59	761
63	238	108	72	12	10	4	19	463
64	92	147	30	135	1	1	30	436
65	204	115	47	123	19	4	68	580
66	195	266	99	7	14	0	63	644
67	112	274	48	194	12	8	77	725
68	99	215	19	51	8	1	28	421
69	193	269	35	50	19	5	51	622
70	90	212	27	151	3	2	34	519

Contd....

Polling Station Level Election Results

Winner, Runner-up and 3rd Party Position & Winning Margin According to Polling Stations in Simaria Assembly in Assembly Election (AE) under Chatra Parliamentary Constituency in Jharkhand (2019)

Polling Station Number	Winner Party	Winner Votes (%)	Runner-up Party	Runner-up Votes (%)	Winning Margin Votes (%)	Third Party	Third Party Votes (%)	Other Votes (%)
71	BJP	119 (45.42)	AJSUP	68 (25.95)	51 (19.47)	INC	36 (13.74)	39 (14.89)
72	BJP	305 (67.93)	AJSUP	59 (13.14)	246 (54.79)	JVM	28 (6.24)	57 (12.69)
73	AJSUP	267 (47.34)	INC	100 (17.73)	167 (29.61)	BJP	85 (15.07)	112 (19.86)
74	BJP	103 (37.18)	AJSUP	100 (36.1)	3 (1.08)	JVM	43 (15.52)	31 (11.19)
75	BJP	186 (32.07)	CPI	167 (28.79)	19 (3.28)	AJSUP	140 (24.14)	87 (15)
76	AJSUP	201 (39.26)	CPI	113 (22.07)	88 (17.19)	BJP	108 (21.09)	90 (17.58)
77	NV	NV (NV)	NV	NV (NV)	NV (NV)	NV	NV (NV)	NV (NV)
78	AJSUP	340 (47.55)	BJP	169 (23.64)	171 (23.91)	JVM	113 (15.8)	93 (13.01)
79	AJSUP	94 (26.48)	JVM	76 (21.41)	18 (5.07)	INC	57 (16.06)	128 (36.06)
80	NV	NV (NV)	NV	NV (NV)	NV (NV)	NV	NV (NV)	NV (NV)
81	BJP	164 (34.67)	INC	134 (28.33)	30 (6.34)	AJSUP	74 (15.64)	101 (21.35)
82	BJP	219 (42.86)	AJSUP	117 (22.9)	102 (19.96)	JVM	65 (12.72)	110 (21.53)
83	BJP	184 (34.98)	AJSUP	161 (30.61)	23 (4.37)	JVM	77 (14.64)	104 (19.77)
84	AJSUP	182 (29.5)	JVM	181 (29.34)	1 (0.16)	BJP	106 (17.18)	148 (23.99)
85	AJSUP	323 (59.16)	BJP	79 (14.47)	244 (44.69)	JVM	58 (10.62)	86 (15.75)
86	AJSUP	398 (61.33)	BJP	147 (22.65)	251 (38.68)	IND (KK)	32 (4.93)	72 (11.09)
87	AJSUP	203 (42.83)	BJP	156 (32.91)	47 (9.92)	JVM	32 (6.75)	83 (17.51)
88	AJSUP	331 (53.3)	BJP	170 (27.38)	161 (25.92)	IND (KK)	20 (3.22)	100 (16.1)
89	AJSUP	198 (40.16)	BJP	131 (26.57)	67 (13.59)	INC	61 (12.37)	103 (20.89)
90	AJSUP	268 (51.94)	INC	86 (16.67)	182 (35.27)	BJP	55 (10.66)	107 (20.74)
91	AJSUP	325 (60.41)	BJP	110 (20.45)	215 (39.96)	CPI	27 (5.02)	76 (14.13)
92	AJSUP	285 (56.66)	INC	88 (17.5)	197 (39.16)	BJP	49 (9.74)	81 (16.1)
93	AJSUP	479 (69.22)	BJP	85 (12.28)	394 (56.94)	IND (KK)	30 (4.34)	98 (14.16)
94	AJSUP	390 (63.73)	BJP	58 (9.48)	332 (54.25)	CPI	43 (7.03)	121 (19.77)
95	AJSUP	199 (40.04)	BJP	183 (36.82)	16 (3.22)	JVM	48 (9.66)	67 (13.48)
96	AJSUP	587 (65.29)	BJP	159 (17.69)	428 (47.6)	JVM	37 (4.12)	116 (12.9)
97	AJSUP	449 (54.89)	BJP	190 (23.23)	259 (31.66)	INC	42 (5.13)	137 (16.75)
98	AJSUP	248 (51.03)	BJP	76 (15.64)	172 (35.39)	JVM	48 (9.88)	114 (23.46)
99	AJSUP	216 (39.93)	JVM	127 (23.48)	89 (16.45)	BJP	84 (15.53)	114 (21.07)
100	AJSUP	388 (75.34)	BJP	70 (13.59)	318 (61.75)	IND (KK)	19 (3.69)	38 (7.38)
101	AJSUP	384 (69.69)	BJP	64 (11.62)	320 (58.07)	INC	40 (7.26)	63 (11.43)
102	AJSUP	346 (59.76)	INC	58 (10.02)	288 (49.74)	BJP	55 (9.5)	120 (20.73)
103	AJSUP	182 (34.54)	BJP	133 (25.24)	49 (9.3)	JVM	64 (12.14)	148 (28.08)
104	JVM	116 (26.42)	BJP	102 (23.23)	14 (3.19)	AJSUP	83 (18.91)	138 (31.44)
105	AJSUP	115 (29.72)	JVM	109 (28.17)	6 (1.55)	BJP	66 (17.05)	97 (25.06)

Contd....

Socio-Economic Amenities - Rural

Access to Education Facilities

Particulars	Number of Villages (% of Population)				
	Available	Not Available	If Not Available (Distance of Nearest Facility)		
			A	B	C
Govt. Primary School	478 (95)	111 (5)	102 (5)	5 (0)	1 (0)
Private Primary School	51 (17)	538 (83)	0 (0)	0 (0)	1 (0)
Govt. Middle School	283 (75)	306 (25)	229 (17)	63 (6)	9 (1)
Private Middle School	32 (10)	557 (90)	2 (0)	1 (0)	0 (0)
Govt. Secondary School	21 (12)	568 (88)	156 (26)	211 (32)	139 (20)
Private Secondary School	12 (4)	577 (96)	26 (2)	12 (3)	15 (2)
Govt. Senior Secondary School	9 (6)	580 (94)	96 (17)	155 (23)	232 (40)
Private Senior Secondary School	3 (2)	586 (98)	9 (1)	8 (2)	71 (11)
Govt. Arts and Science Degree College	0 (0)	589 (100)	25 (4)	67 (9)	458 (80)
Private Arts and Science Degree College	0 (0)	589 (100)	3 (1)	12 (2)	24 (4)
Govt. Engineering College	0 (0)	589 (100)	6 (1)	3 (1)	555 (96)
Private Engineering College	0 (0)	589 (100)	0 (0)	0 (0)	25 (3)
Govt. Medicine College	0 (0)	589 (100)	6 (1)	3 (1)	574 (97)
Private Medicine College	0 (0)	589 (100)	0 (0)	0 (0)	6 (1)
Govt. Management Institute	0 (0)	589 (100)	6 (1)	3 (1)	574 (97)
Private Management Institute	0 (0)	589 (100)	0 (0)	0 (0)	6 (1)
Govt. Polytechnic	0 (0)	589 (100)	0 (0)	10 (3)	577 (97)
Private Polytechnic	0 (0)	589 (100)	0 (0)	0 (0)	2 (0)
Govt. Vocational Training School/ITI	0 (0)	589 (100)	0 (0)	3 (1)	566 (97)
Private Vocational Training School/ITI	0 (0)	589 (100)	0 (0)	0 (0)	20 (2)
Govt. Non Formal Training Centre	0 (0)	589 (100)	8 (2)	7 (3)	551 (92)
Private Non Formal Training Centre	0 (0)	589 (100)	0 (0)	0 (0)	23 (3)
Govt. School For Disabled	0 (0)	589 (100)	2 (0)	6 (2)	552 (93)
Private School For Disabled	0 (0)	589 (100)	0 (0)	0 (0)	29 (5)
Government Others	0 (0)	589 (100)	6 (1)	3 (1)	554 (95)
Private Others	0 (0)	589 (100)	0 (0)	0 (0)	26 (3)

Note : Distance A : Less than 5 km; B : Between 5-10 km; C : 10+ km.; Source : Data Analysis is based on 2011 Census.

DISCLAIMER

The Terms of Use and Disclaimer of Datanet India Private Limited (hereinafter referred to as "Datanet") for use of this analysis report of **Simaria Assembly Constituency (Simaria Vidhan Sabha)** :-

1. **Assembly Factbook™** is a Registered Trade Mark owned by Datanet.
2. All the maps are sketched and graphical representation only and have not been drawn to the scale and also not to represent the actual geographical area or boundary of the unit.
3. The data for the aforesaid analysis is based on authentic sources and has been culled from the various publications of Census, CSO and NSSO for district and block level data, various central and state government departments, Central & State Elections Commissions and the concerned Returning Officers' releases, Electoral Rolls, Election results and allied publications, internal assessment, surveys, estimates and analysis. Therefore, certain adjustment of data at micro level may have been done to arrive closer to the macro data.
4. Data have been provided on an "As Is" and "As AVAILABLE" basis
5. The colours shown in the maps or diagram and charts of a particular party, alliance or AC are indicative and do not represent them.
6. This publication which includes maps, sheets, graphs and data would be the property under copyright of Datanet only. The user may use these for its internal study, analysis and research purposes. It's public display, re-selling or any commercial uses by the user are not allowed.
7. Datanet has taken due care and caution in compilation and processing of data and allied information, but does not guarantee the accuracy, adequacy or completeness of any information/analysis and will be not responsible for any errors or omissions or for the results obtained from the use of such information/analysis.
8. All the contents for the publication have been culled from various authentic sources and Datanet reasonably believes such sources to be reliable, but does not make any representations, express or implied as to the accuracy or fitness of use of such information. The information or contents of the information/analysis do not constitute advice and should not be relied upon in making (or refraining from making) any decision. Any reliance placed upon the information provided by Datanet is the sole responsibility and strictly at the user's risk.
9. In no event will Datanet be liable for any damages (including, without limitation, damages for loss of business projects, or loss of profits) arising in contract, tort or otherwise from the use of or inability to use any of its contents, or from any action taken (or refrained from being taken) as a result of using the analysis or any of its contents. Datanet its directors, owners, editors, officials, employees, distributor and agents or any associate will not be liable for any errors in the information contained or any consequences arising from the use of the contents of the provided information/analysis.
10. If any provision of these terms and conditions is held invalid or illegal or unenforceable for any reason by any court of competent jurisdiction, such provision shall be severed and the remainder of provisions of the terms and conditions shall continue in full force and effect as if the Term of Use had been executed with the invalid, illegal or unenforceable provision eliminated.
11. If there are any discrepancies in the information provided, please bring it to attention of Datanet for suitable rectification measures.

**Buy Online This Complete Book At
Datanet India eBooks Store**

www.indiastatpublications.com

or go directly at

**[http://www.indiastatpublications.com/
Assembly_factbook/Jharkhand/Chatra/ Simaria](http://www.indiastatpublications.com/Assembly_factbook/Jharkhand/Chatra/Simaria)**

 **indiastat**elections

ISBN : 978-93-5313-020-6

