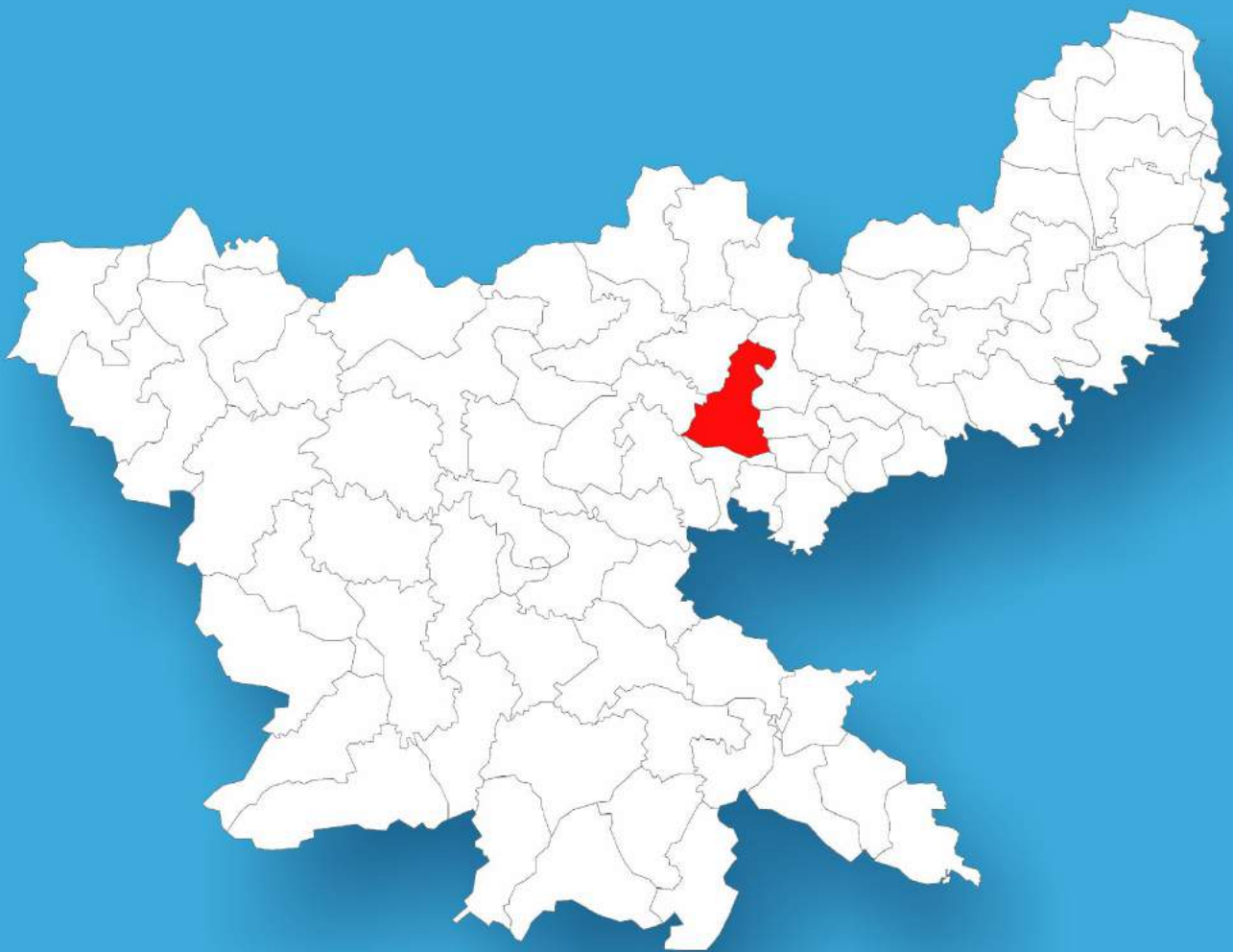




Jharkhand

Assembly Factbook™

Dumri Assembly Constituency



Key Electoral Data of Dumri
Assembly Constituency (Vidhan Sabha)

Jharkhand
Assembly FactbookTM
Dumri Assembly Constituency



Dumri Vidhan Sabha

Editor & Director

Dr. R.K. Thukral

Research Editor

Dr. Shafeeq Rahman

Compiled, Researched and Published by Datanet India Pvt. Ltd.

D-100, 1st Floor,

Okhla Industrial Area, Phase-I,
New Delhi- 110020.

Ph.: 91-11- 43580781-84

Email : support@indiastatpublications.com

Website : www.indiastatelections.com

Online Book Store :

www.indiastatpublications.com

Report No. : AFB/JH-33-0624

ISBN : 978-93-5301-969-3

First Edition : January, 2018

Seventh Updated Edition : June, 2024

Price : Rs. 11500/-

US\$ 310

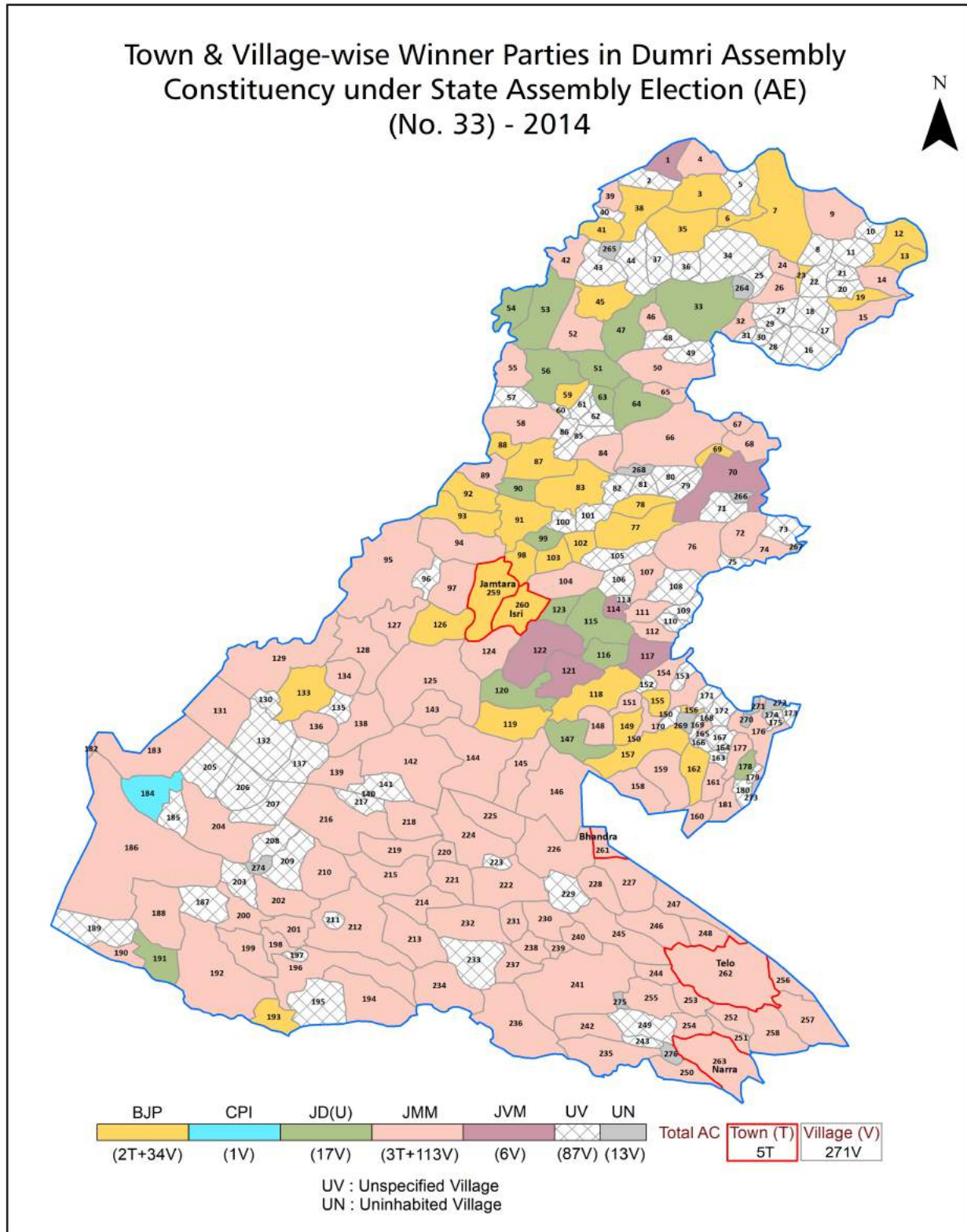
© **Datanet India Pvt. Ltd.**

All rights reserved. No part of this book may be reproduced, stored in a retrieval system or transmitted in any form or by any means, mechanical photocopying, photographing, scanning, recording or otherwise without the prior written permission of the publisher. Please refer to Disclaimer at page no. 268 for the use of this publication.

Printed in India

No.	Particulars	Page No.
	Introduction	
1	Assembly Constituency - (Vidhan sabha) at a Glance Features of Assembly as per Delimitation Commission of India (2008)	1-2
	Location and Political Maps	
2	Location Map Boundaries of Assembly Constituency - (Vidhan sabha) in District Boundaries of Assembly Constituency under Parliamentary Constituency - (Lok sabha) Town & Village-wise Winner Parties- 2024-PE, 2019-PE, 2019-AE, 2014-PE, 2014-AE, 2009-PE and 2009-AE	3-11
	Administrative Setup (2011)	
3	District Sub-district Towns Villages Inhabited Villages Uninhabited Villages Village Panchayat Intermediate Panchayat	12-25
	Demographics (2011)	
4	Population Households Rural/Urban Population Towns and Villages by Population Size Sex Ratio (Total & 0-6 Years) Religious Population Social Population Literacy Rate	26-27
	Electoral Features	
5	Important Dates of Last Elections Held Electors by Gender Service Electors Voters Voters Turnout Polling Stations & Average Number of Electors per Polling Station Electors by Age Group Present Elected Representatives	28-33
	Historical Summary Election Results	
6	Vote Share of Major Parties Winning Margin (Number & Percentage) Polarity of Parties Summary Result of Assembly Segment of Parliamentary Elections 2024, 2019, 2014, 2009 and 2004 Summary Result of Assembly Elections 2019, 2014, 2009 and 2005	34-45
	Polling Station Level Election Results	
7	Name and Number of Polling Station 2024-PE, 2019-PE, 2019-AE, 2014-PE, 2014-AE, 2009-PE and 2009-AE Polling Station-wise Electors, Voters & Voters Turnout 2024-PE, 2019-PE, 2019-AE, 2014-PE, 2014-AE, 2009-PE and 2009-AE Polling Station wise Elections Results 2024-PE, 2019-PE, 2019-AE, 2014-PE, 2014-AE, 2009-PE and 2009-AE	46-245
	Share of Assembly Constituency	
8	Share of Assembly Constituency - (Vidhan sabha) in State, District and Parliamentary Constituency - (Lok sabha)	246
	Socio-Economic Amenities (2011)	
9	Access to Administrative Units Agricultural, Manufacturing and Industrial Commodities Demographic Indicators Education Health & Manpower Drinking Water Supply Sanitation Entertainment and Recreations Infrastructure Power Food Allocation Distribution and Marketing of Agriculture Commodities Infrastructure Transport and Road Infrastructure Communication Banking and Financial Services Land Use Irrigation Source	248-262
10	Abbreviation & Sources	264-266
11	Disclaimer	268

Location & Political Map



Administrative Setup

List of Village Panchayat & Intermediate Panchayat (Block) Name - 2011

Village Name	Village Panchayat Name	Intermediate Panchayat Name
Agalgari	Kanhawar	Dumri
Ahardih	Ahardih	Nawadih
Akbakitanr	Jitkundi	Dumri
Alargo	Alargo	Chandrapura
Ambadih	Kalhawar	Dumri
Ambadih	Parasbera	Dumri
Amjhar	Bhalmara	Nawadih
Amra	Amra	Dumri
Andhari	Jaridih	Dumri
Argamno	-	Nawadih
Arwatanr	Nagabad	Dumri
Asnasingha	Balutunda	Dumri
Asurbandh	Asurbandh	Dumri
Atki	Atki	Dumri
Babhandiha	Jitkundi	Dumri
Badkharo	Khera Tunda	Dumri
Bahadurpur	Kudhisar	Dumri
Baledih	Tegrakhurd	Dumri
Baltharia	Baltharia	Dumri
Balutunda	Balutunda	Dumri
Bandio	Bandio	Chandrapura
Bansi	Pokhria	Nawadih
Baradih	Jitkundi	Dumri
Baradih	Baltharia	Dumri
Baradih	Baradih	Nawadih
Barahganda	Parsabera	Dumri
Barai	Barai	Nawadih
Baramasia	Berha Suiyadih	Dumri
Baramasia	Atki	Dumri

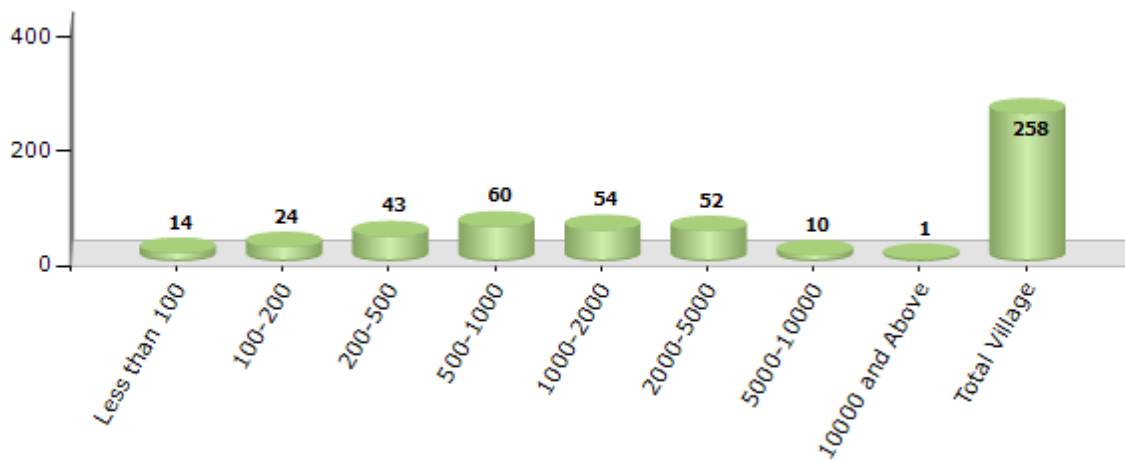
Contd....

Demographics

Number of Villages by Population Size - 2011

Less than 100	100-200	200-500	500-1000	1000-2000	2000-5000	5000-10000	10000 and Above	Total Village
14	24	43	60	54	52	10	1	258

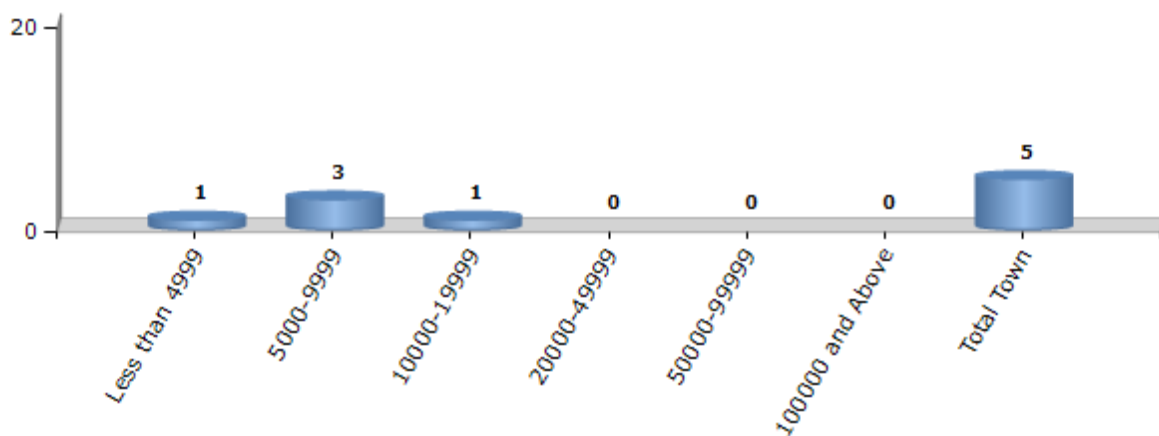
Number of Villages by Population Size - 2011



Number of Towns by Population Size - 2011

Less than 4999	5000-9999	10000-19999	20000-49999	50000-99999	100000 and Above	Total Town
1	3	1	0	0	0	5

Number of Towns by Population Size - 2011

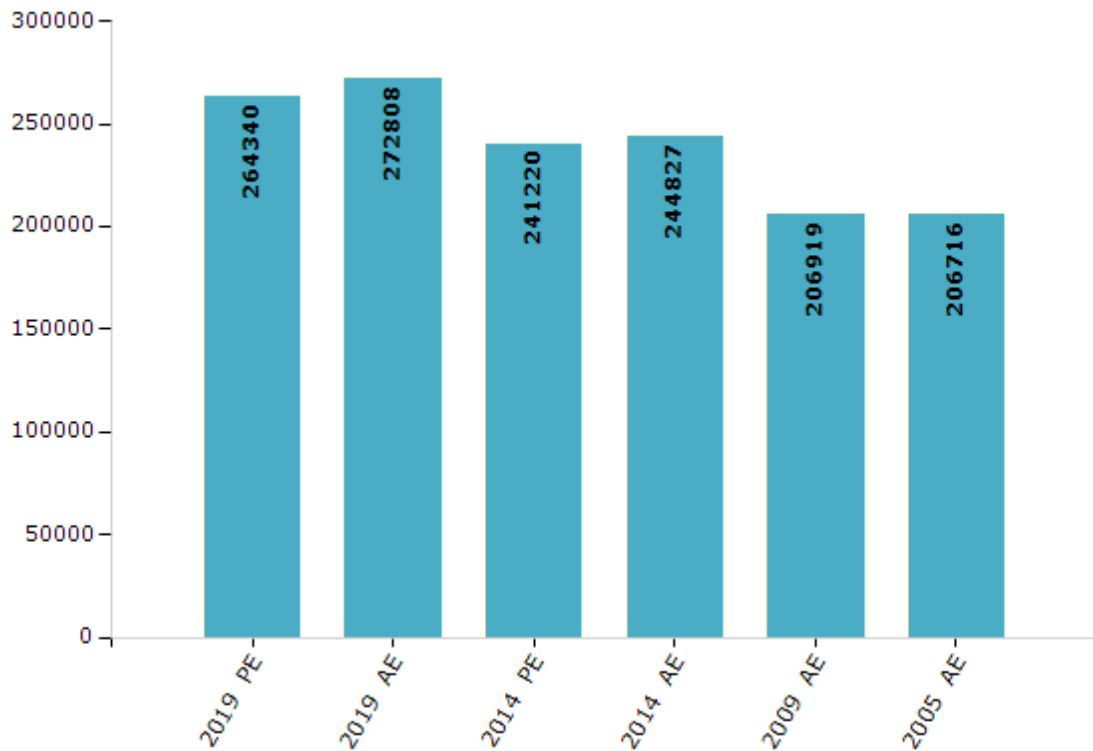


Electoral Features

Electors by Male & Female

Year	Male	Female	Others	Total	Year	Male	Female	Others	Total
2019 PE	139889	124450	1	264340	2009 PE	-	-	-	-
2019 AE	142424	130381	3	272808	2009 AE	109676	97243	-	206919
2014 PE	128107	113113	0	241220	2005 AE	109321	97395	-	206716
2014 AE	129817	115010	0	244827	2004 PE	-	-	-	-

Number of Electors



Note : AE : Assembly Election, PE : Assembly Segment of Parliamentary Election

Historical Summary Election Results

Summary Result of Assembly Election - 2014

Candidate Name	Party	Votes	Votes %
Jagarnath Mahto	JMM	77984	45.05
Lalchand Mahto	BJP	45503	26.29
Abdul Mobin	JD(U)	16730	9.67
Pradip Kumar Sahu	JVM	9032	5.22
Babulal Ravidas	SP	4630	2.67
Nunuchand Mahto	CPI	3641	2.1
Mithu Mahto	IND	2914	1.68
Sultan Ansari	IND	2850	1.65
Kaleshwar Ravidas	BSP	2074	1.2
Kamlesh Kumar Mahto	IND	1285	0.74
Shiva Mahto	JKPP	1276	0.74
Mahavir Prasad	MCO	1097	0.63
Nageshwar Mandal	IND	1053	0.61
Maksud Alam	CPI(ML)(L)	959	0.55
Punit Kumar Karmakar	JVD	536	0.31
Fulchand Pandit	PMS	484	0.28
	NOTA	1046	0.6

Polling Station Level Election Results

Number and Name of Polling Stations (PS) (2019 AE)

Number of Polling Stations	Name of Polling Stations	Number of Polling Stations	Name of Polling Stations
1	U.M.S. Nurango North Part	22	U.M.S. Jitkundi West Part
2	U.M.S. Nurango South Part	23	U.M.S. Jitkundi East Part
3	U.M.S. Sasarkho	24	U.M.S. Ohdarnawadih
4	P.S. Pardhandih	25	U.M.S. Akbakitand East Part
5	U.M.S. Kustonawadih	26	U.M.S. Akbakitand West Part
6	P.S. Basgohra	27	U.M.S. Teliyabahiya
7	M.S. Bhandaro East Part	28	Panchayat Bhawan Bhawanand
8	M.S. Bhandaro North Part	29	U.M.S. Bhawanand West Part
9	M.S. Bhandaro West Part	30	U.M.S. Jaridih East Part
10	U.M.S. Nagabad East Part	31	U.M.S. Jaridih North Part
11	U.M.S. Nagabad New Building	32	U.M.S. Jaridih West Part
12	U.M.S. Nagabad West Part	33	U.M.S. Basokando
13	U.M.S. Nagabad North Part	34	U.M.S. Manjhiladih
14	M.S. Khudisar East Part	35	U.P.S. Harijan Tola Badki Bergi West Part
15	M.S. Khudisar North Part	36	U.P.S. Harijan Tola Badki Bergi East Part
16	M.S. Khudisar West Part	37	U.M.S. Chotki Bergi
17	U.M.S. Bahadurpur North Part	38	Panchayat Bhawan Suiyadih
18	U.M.S. Bahadurpur South Part	39	U.M.S. Suiyadih
19	U.M.S. Bahadurpur East Part	40	P.S. Jangidiri
20	U.M.S. Khutargurho	41	M.S. Chalmo Barmasiya
21	U.M.S. Murkundo	42	U.M.S. Parsabeda West Part

Contd....

Polling Station Level Election Results

Polling Station-wise Votes Secured by Overall Top Five Parties in Dumri Assembly in Assembly Election (AE) under Giridih Parliamentary Constituency in Jharkhand (2019)

Number of Polling Station	Winner - Jagarnath Mahto (JMM)	Runner-up - Yashoda Devi (AJSUP)	3rd - Pradeep Kumar Sahu (BJP)	4th - Abdul Mobin Rizvi (AIMIM)	5th - Lalchand Mahto (JD(U))	NOTA	Other	Total Votes Secured
36	22	15	223	7	12	6	27	312
37	84	9	186	281	9	10	49	628
38	50	45	21	371	1	7	33	528
39	119	51	130	131	2	7	46	486
40	227	54	188	50	12	7	52	590
41	118	65	192	104	14	15	68	576
42	79	70	36	278	1	11	56	531
43	37	6	4	301	0	6	26	380
44	194	7	5	158	1	8	28	401
45	205	128	20	278	5	4	52	692
46	45	151	14	0	0	4	28	242
47	174	181	103	0	10	4	45	517
48	77	80	68	0	9	1	27	262
49	68	129	23	0	5	2	18	245
50	232	329	59	3	8	10	87	728
51	93	60	82	183	6	4	55	483
52	33	121	183	51	9	4	43	444
53	54	26	66	234	1	6	41	428
54	33	117	113	149	5	9	40	466
55	17	88	181	4	16	1	18	325
56	294	12	13	1	3	4	23	350
57	225	212	130	46	15	2	53	683
58	108	117	390	15	9	3	19	661
59	165	81	312	2	12	4	29	605
60	44	119	382	4	24	7	44	624
61	107	356	68	70	35	23	137	796
62	265	303	77	4	11	9	114	783
63	149	128	168	1	5	4	43	498
64	142	231	29	14	16	2	62	496
65	231	193	17	0	4	8	68	521
66	64	169	21	1	1	0	23	279
67	94	232	35	1	6	6	55	429
68	70	222	68	2	13	8	62	445
69	165	232	42	3	8	2	50	502
70	202	66	65	1	4	9	35	382

Contd....

Polling Station Level Election Results

Winner, Runner-up and 3rd Party Position & Winning Margin According to Polling Stations in Dumri Assembly in Assembly Election (AE) under Giridih Parliamentary Constituency in Jharkhand (2019)

Polling Station Number	Winner Party	Winner Votes (%)	Runner-up Party	Runner-up Votes (%)	Winning Margin Votes (%)	Third Party	Third Party Votes (%)	Other Votes (%)
71	JMM	178 (65.68)	AJSUP	35 (12.92)	143 (52.76)	BJP	23 (8.49)	35 (12.92)
72	AJSUP	310 (63.27)	JMM	131 (26.73)	179 (36.54)	SHS	13 (2.65)	36 (7.35)
73	AJSUP	282 (41.11)	JMM	189 (27.55)	93 (13.56)	BJP	104 (15.16)	111 (16.18)
74	AJSUP	209 (42.65)	BJP	98 (20)	111 (22.65)	AIMIM	69 (14.08)	114 (23.27)
75	AJSUP	132 (34.29)	JMM	91 (23.64)	41 (10.65)	AIMIM	67 (17.4)	95 (24.68)
76	JMM	149 (35.06)	AJSUP	144 (33.88)	5 (1.18)	BJP	57 (13.41)	75 (17.65)
77	BJP	84 (35.9)	AJSUP	58 (24.79)	26 (11.11)	JMM	54 (23.08)	38 (16.24)
78	AJSUP	351 (62.79)	JMM	111 (19.86)	240 (42.93)	SHS	25 (4.47)	72 (12.88)
79	AJSUP	161 (51.27)	JMM	114 (36.31)	47 (14.96)	BJP	8 (2.55)	31 (9.87)
80	BJP	219 (34.38)	JMM	204 (32.03)	15 (2.35)	AJSUP	52 (8.16)	162 (25.43)
81	JMM	327 (78.99)	AJSUP	29 (7)	298 (71.99)	CPI	18 (4.35)	40 (9.66)
82	JMM	185 (59.49)	AJSUP	43 (13.83)	142 (45.66)	BJP	34 (10.93)	49 (15.76)
83	AJSUP	164 (35.89)	BJP	104 (22.76)	60 (13.13)	JMM	83 (18.16)	106 (23.19)
84	BJP	134 (48.55)	JMM	68 (24.64)	66 (23.91)	AJSUP	58 (21.01)	16 (5.8)
85	BJP	226 (64.76)	AJSUP	57 (16.33)	169 (48.43)	JMM	27 (7.74)	39 (11.17)
86	AJSUP	254 (59.35)	BJP	67 (15.65)	187 (43.7)	JMM	41 (9.58)	66 (15.42)
87	AIMIM	152 (46.06)	AJSUP	81 (24.55)	71 (21.51)	JMM	37 (11.21)	60 (18.18)
88	BJP	462 (66.28)	JMM	109 (15.64)	353 (50.64)	AJSUP	72 (10.33)	54 (7.75)
89	BJP	293 (61.95)	JMM	90 (19.03)	203 (42.92)	AJSUP	67 (14.16)	23 (4.86)
90	AIMIM	321 (71.49)	BJP	40 (8.91)	281 (62.58)	AJSUP	31 (6.9)	57 (12.69)
91	AJSUP	319 (47.05)	BJP	142 (20.94)	177 (26.11)	JMM	121 (17.85)	96 (14.16)
92	BJP	248 (39.43)	AJSUP	171 (27.19)	77 (12.24)	JMM	108 (17.17)	102 (16.22)
93	JMM	153 (35.83)	AJSUP	110 (25.76)	43 (10.07)	BJP	68 (15.93)	96 (22.48)
94	AIMIM	339 (50.67)	AJSUP	127 (18.98)	212 (31.69)	JMM	64 (9.57)	139 (20.78)
95	AIMIM	223 (38.05)	BJP	195 (33.28)	28 (4.77)	AJSUP	94 (16.04)	74 (12.63)
96	AIMIM	380 (74.36)	JMM	36 (7.05)	344 (67.31)	BJP	34 (6.65)	61 (11.94)
97	AIMIM	293 (77.93)	AJSUP	32 (8.51)	261 (69.42)	JMM	29 (7.71)	22 (5.85)
98	AIMIM	222 (52.24)	AJSUP	58 (13.65)	164 (38.59)	BJP	53 (12.47)	92 (21.65)
99	AIMIM	221 (55.39)	BJP	104 (26.07)	117 (29.32)	JMM	34 (8.52)	40 (10.03)
100	AJSUP	203 (35.24)	JMM	159 (27.6)	44 (7.64)	BJP	107 (18.58)	107 (18.58)
101	AJSUP	200 (49.02)	JMM	141 (34.56)	59 (14.46)	BJP	39 (9.56)	28 (6.86)
102	BJP	237 (53.02)	AIMIM	77 (17.23)	160 (35.79)	JMM	71 (15.88)	62 (13.87)
103	AIMIM	155 (50.82)	AJSUP	54 (17.7)	101 (33.12)	BJP	44 (14.43)	52 (17.05)
104	BJP	191 (37.3)	AIMIM	145 (28.32)	46 (8.98)	AJSUP	87 (16.99)	89 (17.38)
105	AIMIM	451 (70.91)	JMM	92 (14.47)	359 (56.44)	BJP	27 (4.25)	66 (10.38)

Contd....

Socio-Economic Amenities - Rural

Access to Education Facilities

Particulars	Number of Villages (% of Population)				
	Available	Not Available	If Not Available (Distance of Nearest Facility)		
			A	B	C
Govt. Primary School	238 (99)	20 (1)	20 (1)	0 (0)	0 (0)
Private Primary School	41 (22)	217 (78)	0 (0)	0 (0)	0 (0)
Govt. Middle School	134 (76)	124 (24)	96 (17)	23 (6)	4 (1)
Private Middle School	25 (16)	233 (84)	0 (0)	0 (0)	0 (0)
Govt. Secondary School	11 (9)	247 (91)	87 (34)	83 (30)	61 (18)
Private Secondary School	12 (9)	246 (91)	4 (2)	2 (1)	0 (0)
Govt. Senior Secondary School	2 (2)	256 (98)	29 (14)	76 (43)	140 (37)
Private Senior Secondary School	5 (3)	253 (97)	1 (0)	0 (0)	6 (3)
Govt. Arts and Science Degree College	1 (2)	257 (98)	9 (5)	59 (26)	182 (61)
Private Arts and Science Degree College	0 (0)	258 (100)	2 (2)	4 (3)	1 (1)
Govt. Engineering College	0 (0)	258 (100)	0 (0)	0 (0)	245 (93)
Private Engineering College	0 (0)	258 (100)	0 (0)	0 (0)	13 (7)
Govt. Medicine College	0 (0)	258 (100)	1 (1)	0 (0)	257 (99)
Private Medicine College	0 (0)	258 (100)	0 (0)	0 (0)	0 (0)
Govt. Management Institute	0 (0)	258 (100)	0 (0)	0 (0)	257 (100)
Private Management Institute	0 (0)	258 (100)	0 (0)	0 (0)	1 (0)
Govt. Polytechnic	0 (0)	258 (100)	1 (0)	0 (0)	257 (100)
Private Polytechnic	0 (0)	258 (100)	0 (0)	0 (0)	0 (0)
Govt. Vocational Training School/ITI	0 (0)	258 (100)	0 (0)	0 (0)	256 (99)
Private Vocational Training School/ITI	0 (0)	258 (100)	0 (0)	0 (0)	2 (1)
Govt. Non Formal Training Centre	0 (0)	258 (100)	9 (6)	6 (2)	214 (80)
Private Non Formal Training Centre	3 (1)	255 (99)	0 (0)	4 (4)	22 (7)
Govt. School For Disabled	0 (0)	258 (100)	0 (0)	0 (0)	258 (100)
Private School For Disabled	0 (0)	258 (100)	0 (0)	0 (0)	0 (0)
Government Others	0 (0)	258 (100)	0 (0)	0 (0)	5 (0)
Private Others	0 (0)	258 (100)	12 (10)	51 (20)	190 (70)

Note : Distance A : Less than 5 km; B : Between 5-10 km; C : 10+ km.; Source : Data Analysis is based on 2011 Census.

DISCLAIMER

The Terms of Use and Disclaimer of Datanet India Private Limited (hereinafter referred to as "Datanet") for use of this analysis report of **Dumri Assembly Constituency (Dumri Vidhan Sabha)** :-

1. **Assembly Factbook™** is a Registered Trade Mark owned by Datanet.
2. All the maps are sketched and graphical representation only and have not been drawn to the scale and also not to represent the actual geographical area or boundary of the unit.
3. The data for the aforesaid analysis is based on authentic sources and has been culled from the various publications of Census, CSO and NSSO for district and block level data, various central and state government departments, Central & State Elections Commissions and the concerned Returning Officers' releases, Electoral Rolls, Election results and allied publications, internal assessment, surveys, estimates and analysis. Therefore, certain adjustment of data at micro level may have been done to arrive closer to the macro data.
4. Data have been provided on an "As Is" and "As AVAILABLE" basis
5. The colours shown in the maps or diagram and charts of a particular party, alliance or AC are indicative and do not represent them.
6. This publication which includes maps, sheets, graphs and data would be the property under copyright of Datanet only. The user may use these for its internal study, analysis and research purposes. It's public display, re-selling or any commercial uses by the user are not allowed.
7. Datanet has taken due care and caution in compilation and processing of data and allied information, but does not guarantee the accuracy, adequacy or completeness of any information/analysis and will be not responsible for any errors or omissions or for the results obtained from the use of such information/analysis.
8. All the contents for the publication have been culled from various authentic sources and Datanet reasonably believes such sources to be reliable, but does not make any representations, express or implied as to the accuracy or fitness of use of such information. The information or contents of the information/analysis do not constitute advice and should not be relied upon in making (or refraining from making) any decision. Any reliance placed upon the information provided by Datanet is the sole responsibility and strictly at the user's risk.
9. In no event will Datanet be liable for any damages (including, without limitation, damages for loss of business projects, or loss of profits) arising in contract, tort or otherwise from the use of or inability to use any of its contents, or from any action taken (or refrained from being taken) as a result of using the analysis or any of its contents. Datanet its directors, owners, editors, officials, employees, distributor and agents or any associate will not be liable for any errors in the information contained or any consequences arising from the use of the contents of the provided information/analysis.
10. If any provision of these terms and conditions is held invalid or illegal or unenforceable for any reason by any court of competent jurisdiction, such provision shall be severed and the remainder of provisions of the terms and conditions shall continue in full force and effect as if the Term of Use had been executed with the invalid, illegal or unenforceable provision eliminated.
11. If there are any discrepancies in the information provided, please bring it to attention of Datanet for suitable rectification measures.

Buy Online This Complete Book At
Datanet India eBooks Store

www.indiastatpublications.com

or go directly at

[http://www.indiastatpublications.com/
Assembly_factbook/Jharkhand/Giridih/ Dumri](http://www.indiastatpublications.com/Assembly_factbook/Jharkhand/Giridih/Dumri)

 **india**stat**elections**

ISBN : 978-93-5301-969-3



9 789353 019693