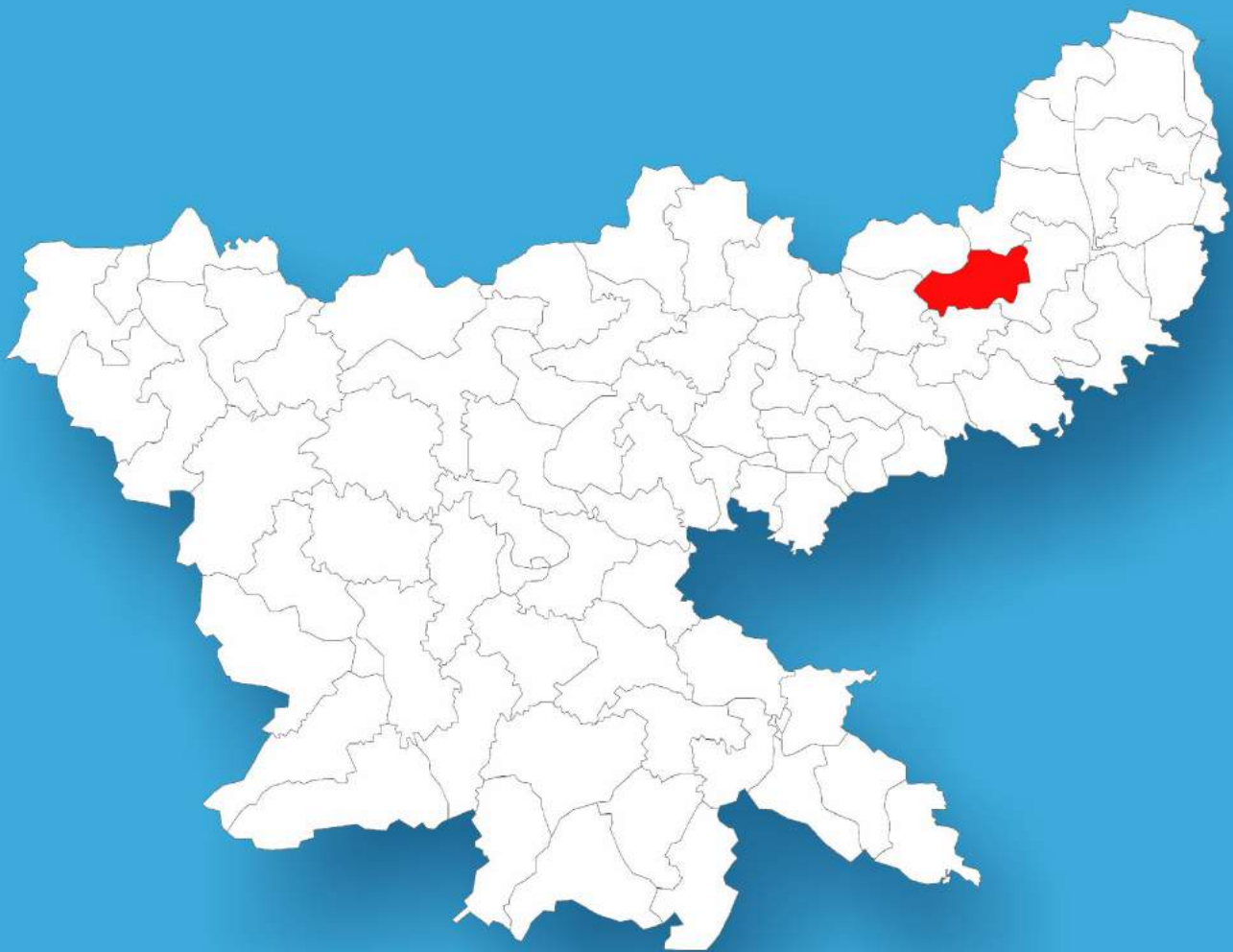




Jharkhand

Assembly Factbook™

Jarmundi Assembly Constituency



Key Electoral Data of Jarmundi
Assembly Constituency (Vidhan Sabha)

Jharkhand

Assembly Factbook™

Jarmundi Assembly Constituency



Jarmundi Vidhan Sabha

Editor & Director

Dr. R.K. Thukral

Research Editor

Dr. Shafeeq Rahman

Compiled, Researched and Published by Datanet India Pvt. Ltd.

D-100, 1st Floor,

Okhla Industrial Area, Phase-I,
New Delhi- 110020.

Ph.: 91-11- 43580781-84

Email : support@indiastatpublications.com

Website : www.indiastatelections.com

Online Book Store :

www.indiastatpublications.com

Report No. : AFB/JH-12-0125

ISBN : 978-93-5301-986-0

First Edition : January, 2018

Eighth Updated Edition : January, 2025

Price : Rs. 11500/-

US\$ 310

© **Datanet India Pvt. Ltd.**

All rights reserved. No part of this book may be reproduced, stored in a retrieval system or transmitted in any form or by any means, mechanical photocopying, photographing, scanning, recording or otherwise without the prior written permission of the publisher. Please refer to Disclaimer at page no. 231 for the use of this publication.

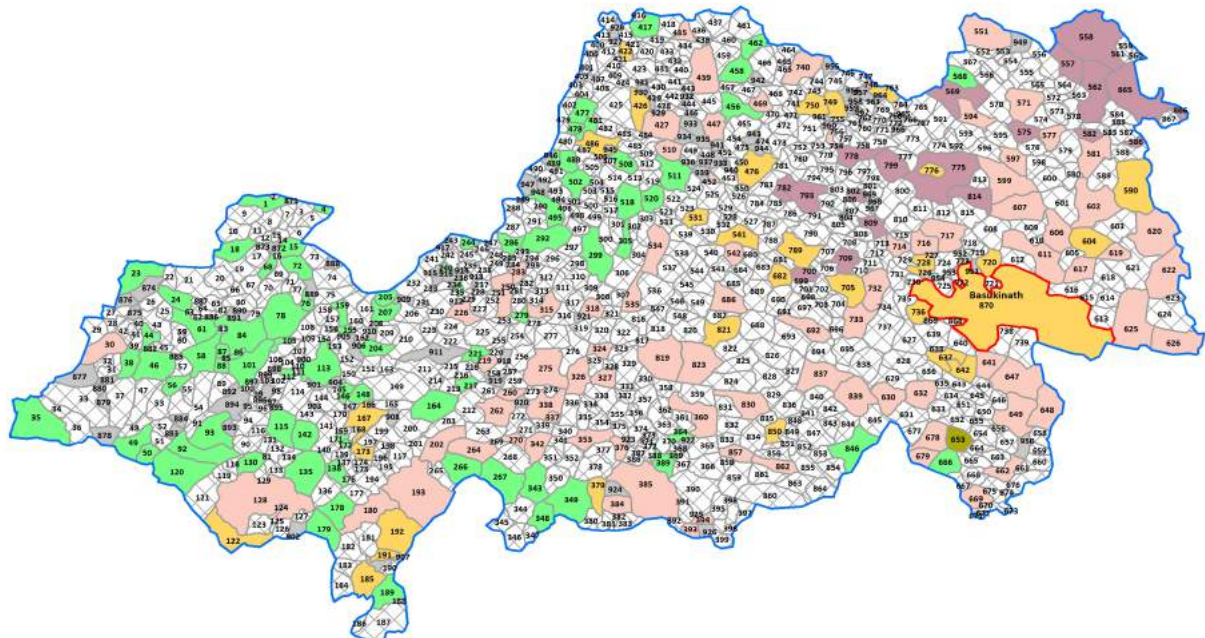
Printed in India

Contents

No.	Particulars	Page No.
	Introduction	
1	Assembly Constituency - (Vidhan sabha) at a Glance Features of Assembly as per Delimitation Commission of India (2008)	1-2
	Location and Political Maps	
2	Location Map Boundaries of Assembly Constituency - (Vidhan sabha) in District Boundaries of Assembly Constituency under Parliamentary Constituency - (Lok sabha) Town & Village-wise Winner Parties- 2024-PE, 2024-AE, 2019-PE, 2019-AE, 2014-PE, 2014-AE and 2009-PE	3-11
	Administrative Setup (2011)	
3	District Sub-district Towns Villages Inhabited Villages Uninhabited Villages Village Panchayat Intermediate Panchayat	12-54
	Demographics (2011)	
4	Population Households Rural/Urban Population Towns and Villages by Population Size Sex Ratio (Total & 0-6 Years) Religious Population Social Population Literacy Rate	55-56
	Electoral Features	
5	Important Dates of Last Elections Held Electors by Gender Service Electors Voters Voters Turnout Polling Stations & Average Number of Electors per Polling Station Electors by Age Group Present Elected Representatives	57-62
	Historical Summary Election Results	
6	Vote Share of Major Parties Winning Margin (Number & Percentage) Polarity of Parties Summary Result of Assembly Segment of Parliamentary Elections 2024, 2019, 2014, 2009 and 2004 Summary Result of Assembly Elections 2024, 2019, 2014, 2009 and 2005	63-75
	Polling Station Level Election Results	
7	Name and Number of Polling Station 2024-PE, 2024-AE, 2019-PE, 2019-AE, 2014-PE, 2014-AE and 2009-PE Polling Station-wise Electors, Voters & Voters Turnout 2024-PE, 2024-AE, 2019-PE, 2019-AE, 2014-PE, 2014-AE and 2009-PE Polling Station wise Elections Results 2024-PE, 2024-AE, 2019-PE, 2019-AE, 2014-PE, 2014-AE and 2009-PE	76-209
	Share of Assembly Constituency	
8	Share of Assembly Constituency - (Vidhan sabha) in State, District and Parliamentary Constituency - (Lok sabha)	210
	Socio-Economic Amenities (2011)	
9	Access to Administrative Units Agricultural, Manufacturing and Industrial Commodities Demographic Indicators Education Health & Manpower Drinking Water Supply Sanitation Entertainment and Recreations Infrastructure Power Food Allocation Distribution and Marketing of Agriculture Commodities Infrastructure Transport and Road Infrastructure Communication Banking and Financial Services Land Use Irrigation Source	212-225
10	Abbreviation & Sources	227-229
11	Disclaimer	231

Location & Political Map

Town & Village-wise Winner Parties in Jarmundi Assembly Constituency under State Assembly Election (AE) (No. 12) - 2014



BJP	INC	JMM	JVM	RJD	UV	UN	Total AC	Town (T)	Village (V)
(1T+30V)	(84V)	(83V)	(19V)	(1V)	(652V)	(99V)		1T	968V

UV : Unspecified Village
UN : Uninhabited Village

Administrative Setup

List of Village Panchayat & Intermediate Panchayat (Block) Name - 2011

Village Name	Village Panchayat Name	Intermediate Panchayat Name
Agoia	Bhorabad	Jarmundi
Ajuband	Bandajori	Sarwan
Amarpani	Paharidih	Jarmundi
Amba	Khejuriya	Sona Rai Tharhi
Amba	Kala Dumariya	Jarmundi
Amba	Sahara	Jarmundi
Amba	Bhorabad	Jarmundi
Ambadangal	Haripur Bazar	Jarmundi
Ambaghagh	Kaladumria	Jarmundi
Amgachhi	Brahmotar	Sona Rai Tharhi
Amgachhi	Gardaamarkunda	Jarmundi
Amratanr	Dakai	Sarwan
Amri	Kala Dumariya	Jarmundi
Arai	Dondiya	Sona Rai Tharhi
Arandiya	Mahapur	Sona Rai Tharhi
Asanbahiyari	Daoundiya 2	Sona Rai Tharhi
Asanbani	-	Sarwan
Asansol	Bhorabad	Jarmundi
Asur Bandha	Brahmotar	Sona Rai Tharhi
Aswari	Patsar	Jarmundi
Auwal Teliyadh	Lakhoriya	Sarwan
Auwal Teliyadh Chhit	Dahua	Sarwan
Babhandiha	Mahapur	Sona Rai Tharhi
Badhiadh	Raykanali	Jarmundi
Badhni	Daundiya-1	Sarwan
Badiya	Jiyakhara	Sarwan
Badrampur	Raja Simariya	Jarmundi
Baghapathar	Narangi	Sarwan
Baghia	Pharidih	Jarmundi

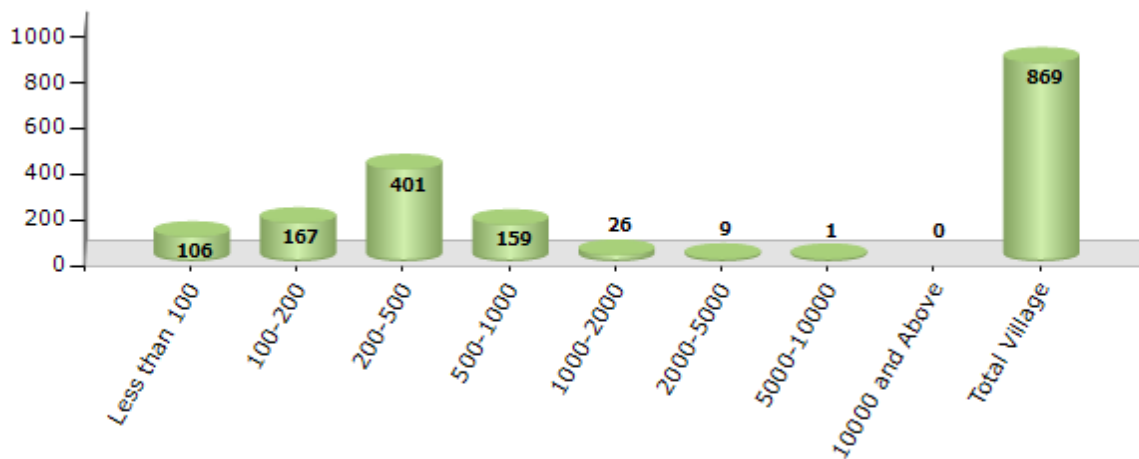
Contd....

Demographics

Number of Villages by Population Size - 2011

Less than 100	100-200	200-500	500-1000	1000-2000	2000-5000	5000-10000	10000 and Above	Total Village
106	167	401	159	26	9	1	0	869

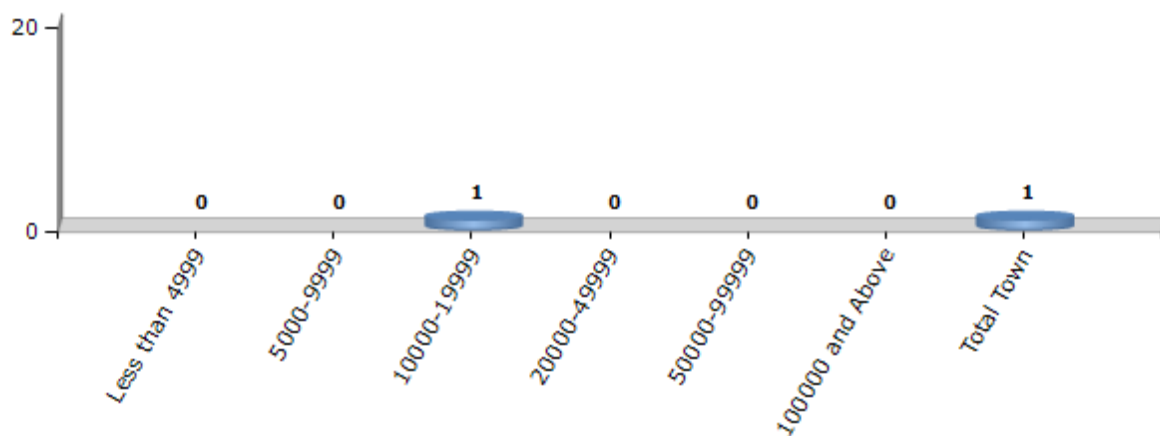
Number of Villages by Population Size - 2011



Number of Towns by Population Size - 2011

Less than 4999	5000-9999	10000-19999	20000-49999	50000-99999	100000 and Above	Total Town
0	0	1	0	0	0	1

Number of Towns by Population Size - 2011

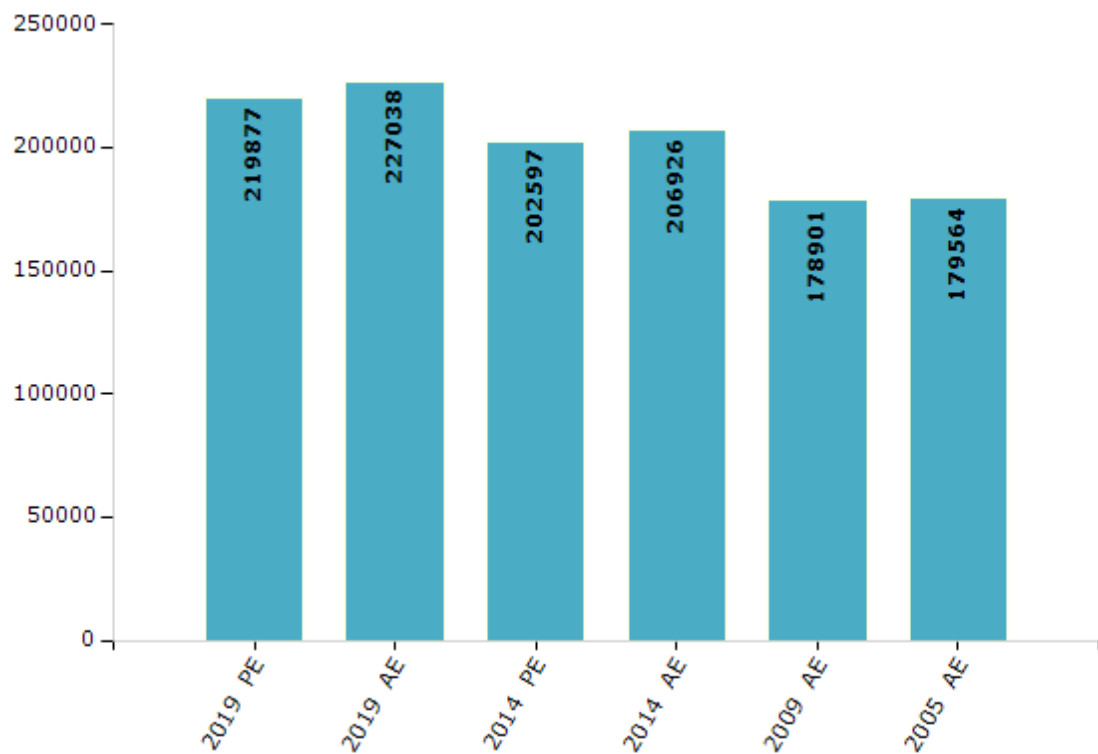


Electoral Features

Electors by Male & Female

Year	Male	Female	Others	Total	Year	Male	Female	Others	Total
2019 PE	115676	104201	0	219877	2009 PE	-	-	-	-
2019 AE	118652	108385	1	227038	2009 AE	93227	85674	-	178901
2014 PE	106659	95938	0	202597	2005 AE	92801	86763	-	179564
2014 AE	108859	98067	0	206926	2004 PE	-	-	-	-

Number of Electors



Note : AE : Assembly Election, PE : Assembly Segment of Parliamentary Election

Historical Summary Election Results

Summary Result of Assembly Election - 2014

Candidate Name	Party	Votes	Votes %
Badal	INC	43981	28.83
Hari Narayan Ray	JMM	41273	27.05
Abhay Kant Prasad	BJP	29965	19.64
Devendra Kunwar	JVM	14189	9.3
Damodar Singh	BSP	2948	1.93
Varun Kumar	RJD	2797	1.83
Parmanand Ravidas	IND	2480	1.63
Chandra Shekhar Yadav	JD(U)	2469	1.62
Braj Kishore Pandit	IND	2440	1.6
Emani Ansari	BMUP	1590	1.04
Uma Kant Raut	IND	1570	1.03
Sunil Prasad Verma	SP	1508	0.99
Lakhpati Mal	IND	1136	0.74
Vibhishan Yadav	CPI(ML)(L)	772	0.51
Uma Kant Mehra	PMS	608	0.4
	NOTA	2847	1.87

Polling Station Level Election Results

Number and Name of Polling Stations (PS) (2019 AE)

Number of Polling Stations	Name of Polling Stations	Number of Polling Stations	Name of Polling Stations
1	P.S. Mahulbana	22	M.S. Nonihat Bangla (South Part)
2	M.S. Katimba	23	U.M.S. Noniganw
3	P.S. Rajasimaria	24	Panchayat Sachivalay Nonihat
4	U.M.S. Khuthari (East Part)	25	P.S. Jhakhiya
5	U.M.S. Khuthari (West Part)	26	U.M.S. Dhamna
6	U.M.S. Jaypur	27	U.M.S. Bogli
7	U.M.S. Bhalki (East Part)	28	P.S. Dharampur
8	U.M.S. Bhalki (West Part)	29	M.S. Ghormara,Latta
9	U.M.S. Chandradip	30	P.S. Thekchaghongha
10	P.S. Lagwa	31	U.M.S. Bara (North Part)
11	New P.S. Sadhudih	32	U.M.S. Bara (South Part)
12	U.M.S. Mahua	33	M.S. Chamrabahiyar (East Part)
13	U.M.S. Kordiha	34	M.S. Chamrabahiyar (West Part)
14	U.M.S. Petsar (West Part)	35	U.M.S. Nawadih-Jhawadih
15	U.M.S. Petsar (East Part)	36	U.M.S. Putlidabar
16	U.M.S. Sukhjora	37	U.M.S. Dhamanchipa
17	U.M.S. Beltikri	38	U.M.S. Patsara
18	Zila Parisad Dakbangla Nonihat (North Part)	39	U.M.S. Kushbad
19	Panchayat Bhawan Nonihat	40	M.S. Basukinath (North Part)
20	Zila Parisad Dakbangla Nonihat (South Parth)	41	M.S. Basukinath (South Part)
21	M.S. Nonihat Bangla (North Part)	42	High School Jarmundi

Contd....

Polling Station Level Election Results

Polling Station-wise Votes Secured by Overall Top Five Parties in Jarmundi Assembly in Assembly Election (AE) under Godda Parliamentary Constituency in Jharkhand (2019)

Number of Polling Station	Winner - Badal (INC)	Runner-up - Devendra Kunwar (BJP)	3rd - Fulkumari Devi (IND)	4th - Sanjay Kumar (JVM)	5th - Sita Ram Pathak (IND)	NOTA	Other	Total Votes Secured
36	166	199	42	16	9	3	224	659
37	203	63	84	11	4	4	93	462
38	146	420	6	21	12	4	101	710
39	107	505	6	72	11	3	127	831
40	91	243	0	9	16	1	40	400
41	107	242	2	9	12	3	57	432
42	156	253	0	7	18	3	39	476
43	172	265	2	11	15	4	45	514
44	122	346	2	54	21	5	34	584
45	39	235	1	3	18	5	27	328
46	57	290	2	11	11	5	36	412
47	204	80	10	17	4	7	127	449
48	31	280	2	18	3	4	48	386
49	122	517	9	9	14	6	83	760
50	106	325	11	10	13	6	81	552
51	170	364	2	6	10	6	65	623
52	51	297	5	4	11	3	58	429
53	115	272	4	10	22	0	40	463
54	67	292	0	19	32	3	63	476
55	102	370	8	25	16	4	77	602
56	199	125	4	10	3	1	74	416
57	207	314	8	9	6	3	99	646
58	68	218	11	5	7	9	83	401
59	196	189	17	13	3	3	63	484
60	77	336	11	9	7	14	285	739
61	189	207	25	21	5	5	106	558
62	112	101	9	15	8	3	178	426
63	120	353	7	7	18	16	87	608
64	160	183	26	3	3	7	79	461
65	171	149	17	3	2	2	47	391
66	228	257	6	28	16	7	142	684
67	107	417	5	0	0	9	67	605
68	315	131	49	13	1	8	109	626
69	491	10	2	24	0	2	33	562
70	234	240	10	4	18	3	73	582

Contd....

Polling Station Level Election Results

Winner, Runner-up and 3rd Party Position & Winning Margin According to Polling Stations in Jarmundi Assembly in Assembly Election (AE) under Godda Parliamentary Constituency in Jharkhand (2019)

Polling Station Number	Winner Party	Winner Votes (%)	Runner-up Party	Runner-up Votes (%)	Winning Margin Votes (%)	Third Party	Third Party Votes (%)	Other Votes (%)
71	BJP	200 (49.26)	INC	110 (27.09)	90 (22.17)	IND (SRP)	47 (11.58)	49 (12.07)
72	INC	174 (46.28)	BJP	107 (28.46)	67 (17.82)	IND (AKY)	19 (5.05)	76 (20.21)
73	BJP	233 (44.05)	IND (SRP)	98 (18.53)	135 (25.52)	INC	77 (14.56)	121 (22.87)
74	BJP	99 (36.94)	INC	75 (27.99)	24 (8.95)	IND (SRP)	34 (12.69)	60 (22.39)
75	BJP	138 (40.59)	IND (SS)	35 (10.29)	103 (30.3)	IND (FD)	29 (8.53)	138 (40.59)
76	BJP	311 (48.98)	INC	178 (28.03)	133 (20.95)	IND (SRP)	26 (4.09)	120 (18.9)
77	INC	198 (52.24)	BJP	58 (15.3)	140 (36.94)	IND (SRP)	33 (8.71)	90 (23.75)
78	INC	104 (29.46)	BJP	98 (27.76)	6 (1.7)	AITC	46 (13.03)	105 (29.75)
79	BJP	122 (32.02)	IND (SRP)	55 (14.44)	67 (17.58)	INC	54 (14.17)	150 (39.37)
80	BJP	112 (27.65)	INC	90 (22.22)	22 (5.43)	IND (SRP)	42 (10.37)	161 (39.75)
81	BJP	449 (73.01)	INC	56 (9.11)	393 (63.9)	IND (TPK)	35 (5.69)	75 (12.2)
82	BJP	206 (42.92)	INC	162 (33.75)	44 (9.17)	IND (SRP)	47 (9.79)	65 (13.54)
83	BJP	360 (78.43)	INC	32 (6.97)	328 (71.46)	IND (TPK)	20 (4.36)	47 (10.24)
84	BJP	187 (54.2)	IND (FD)	88 (25.51)	99 (28.69)	IND (BR)	14 (4.06)	56 (16.23)
85	BJP	345 (60)	INC	109 (18.96)	236 (41.04)	IND (SRP)	20 (3.48)	101 (17.57)
86	BJP	438 (63.11)	INC	121 (17.44)	317 (45.67)	IND (TPK)	37 (5.33)	98 (14.12)
87	BJP	326 (48.95)	INC	147 (22.07)	179 (26.88)	IND (TPK)	28 (4.2)	165 (24.77)
88	BJP	395 (76.4)	IND (TPK)	33 (6.38)	362 (70.02)	INC	29 (5.61)	60 (11.61)
89	BJP	430 (62.05)	INC	62 (8.95)	368 (53.1)	IND (FD)	33 (4.76)	168 (24.24)
90	INC	245 (44.87)	BJP	149 (27.29)	96 (17.58)	IND (SRP)	31 (5.68)	121 (22.16)
91	INC	343 (53.01)	BJP	123 (19.01)	220 (34)	JVM	31 (4.79)	150 (23.18)
92	BJP	171 (31.15)	INC	170 (30.97)	1 (0.18)	IND (BR)	51 (9.29)	157 (28.6)
93	BJP	202 (42)	IND (FD)	112 (23.28)	90 (18.72)	INC	60 (12.47)	107 (22.25)
94	INC	256 (59.4)	BJP	48 (11.14)	208 (48.26)	IND (FD)	24 (5.57)	103 (23.9)
95	INC	184 (30.07)	BJP	136 (22.22)	48 (7.85)	IND (SRP)	95 (15.52)	197 (32.19)
96	BJP	235 (37.3)	INC	162 (25.71)	73 (11.59)	IND (SRP)	82 (13.02)	151 (23.97)
97	INC	207 (30.4)	IND (FD)	107 (15.71)	100 (14.69)	BJP	82 (12.04)	285 (41.85)
98	INC	224 (40.36)	BJP	114 (20.54)	110 (19.82)	IND (FD)	36 (6.49)	181 (32.61)
99	INC	183 (41.88)	BJP	126 (28.83)	57 (13.05)	JVM	36 (8.24)	92 (21.05)
100	BJP	147 (20.62)	INC	130 (18.23)	17 (2.39)	JVM	102 (14.31)	334 (46.84)
101	INC	204 (27.57)	JVM	127 (17.16)	77 (10.41)	BJP	86 (11.62)	323 (43.65)
102	BJP	223 (55.75)	INC	57 (14.25)	166 (41.5)	JVM	29 (7.25)	91 (22.75)
103	BJP	259 (39.36)	INC	116 (17.63)	143 (21.73)	JVM	76 (11.55)	207 (31.46)
104	BJP	128 (25.6)	INC	112 (22.4)	16 (3.2)	JVM	39 (7.8)	221 (44.2)
105	IND (FD)	84 (26.92)	INC	74 (23.72)	10 (3.2)	BJP	54 (17.31)	100 (32.05)

Contd....

Socio-Economic Amenities - Rural

Access to Education Facilities

Particulars	Number of Villages (% of Population)				
	Available	Not Available	If Not Available (Distance of Nearest Facility)		
			A	B	C
Govt. Primary School	547 (70)	322 (30)	284 (26)	10 (1)	4 (0)
Private Primary School	37 (5)	832 (95)	0 (0)	0 (0)	0 (0)
Govt. Middle School	175 (27)	694 (73)	545 (57)	100 (11)	24 (3)
Private Middle School	9 (1)	860 (99)	0 (0)	0 (0)	0 (0)
Govt. Secondary School	21 (5)	848 (95)	260 (31)	383 (44)	176 (17)
Private Secondary School	0 (0)	869 (100)	1 (0)	2 (0)	0 (0)
Govt. Senior Secondary School	13 (2)	856 (98)	54 (7)	154 (19)	575 (62)
Private Senior Secondary School	4 (0)	865 (100)	6 (1)	29 (3)	9 (3)
Govt. Arts and Science Degree College	0 (0)	869 (100)	6 (1)	7 (2)	821 (93)
Private Arts and Science Degree College	0 (0)	869 (100)	3 (0)	0 (0)	1 (0)
Govt. Engineering College	0 (0)	869 (100)	0 (0)	0 (0)	482 (52)
Private Engineering College	0 (0)	869 (100)	0 (0)	4 (0)	353 (44)
Govt. Medicine College	0 (0)	869 (100)	0 (0)	0 (0)	621 (71)
Private Medicine College	0 (0)	869 (100)	0 (0)	1 (0)	215 (25)
Govt. Management Institute	0 (0)	869 (100)	0 (0)	0 (0)	482 (52)
Private Management Institute	0 (0)	869 (100)	0 (0)	4 (0)	353 (44)
Govt. Polytechnic	0 (0)	869 (100)	0 (0)	0 (0)	841 (97)
Private Polytechnic	0 (0)	869 (100)	0 (0)	0 (0)	0 (0)
Govt. Vocational Training School/ITI	0 (0)	869 (100)	0 (0)	4 (0)	833 (96)
Private Vocational Training School/ITI	0 (0)	869 (100)	0 (0)	0 (0)	5 (1)
Govt. Non Formal Training Centre	0 (0)	869 (100)	0 (0)	6 (1)	340 (43)
Private Non Formal Training Centre	0 (0)	869 (100)	0 (0)	2 (0)	490 (53)
Govt. School For Disabled	0 (0)	869 (100)	0 (0)	0 (0)	362 (46)
Private School For Disabled	0 (0)	869 (100)	0 (0)	0 (0)	475 (51)
Government Others	0 (0)	869 (100)	57 (7)	192 (23)	106 (14)
Private Others	0 (0)	869 (100)	0 (0)	0 (0)	470 (50)

Note : Distance A : Less than 5 km; B : Between 5-10 km; C : 10+ km.; Source : Data Analysis is based on 2011 Census.

DISCLAIMER

The Terms of Use and Disclaimer of Datanet India Private Limited (hereinafter referred to as "Datanet") for use of this analysis report of **Jarmundi Assembly Constituency (Jarmundi Vidhan Sabha)** :-

1. **Assembly Factbook™** is a Registered Trade Mark owned by Datanet.
2. All the maps are sketched and graphical representation only and have not been drawn to the scale and also not to represent the actual geographical area or boundary of the unit.
3. The data for the aforesaid analysis is based on authentic sources and has been culled from the various publications of Census, CSO and NSSO for district and block level data, various central and state government departments, Central & State Elections Commissions and the concerned Returning Officers' releases, Electoral Rolls, Election results and allied publications, internal assessment, surveys, estimates and analysis. Therefore, certain adjustment of data at micro level may have been done to arrive closer to the macro data.
4. Data have been provided on an "As Is" and "As AVAILABLE" basis
5. The colours shown in the maps or diagram and charts of a particular party, alliance or AC are indicative and do not represent them.
6. This publication which includes maps, sheets, graphs and data would be the property under copyright of Datanet only. The user may use these for its internal study, analysis and research purposes. It's public display, re-selling or any commercial uses by the user are not allowed.
7. Datanet has taken due care and caution in compilation and processing of data and allied information, but does not guarantee the accuracy, adequacy or completeness of any information/analysis and will be not responsible for any errors or omissions or for the results obtained from the use of such information/analysis.
8. All the contents for the publication have been culled from various authentic sources and Datanet reasonably believes such sources to be reliable, but does not make any representations, express or implied as to the accuracy or fitness of use of such information. The information or contents of the information/analysis do not constitute advice and should not be relied upon in making (or refraining from making) any decision. Any reliance placed upon the information provided by Datanet is the sole responsibility and strictly at the user's risk.
9. In no event will Datanet be liable for any damages (including, without limitation, damages for loss of business projects, or loss of profits) arising in contract, tort or otherwise from the use of or inability to use any of its contents, or from any action taken (or refrained from being taken) as a result of using the analysis or any of its contents. Datanet its directors, owners, editors, officials, employees, distributor and agents or any associate will not be liable for any errors in the information contained or any consequences arising from the use of the contents of the provided information/analysis.
10. If any provision of these terms and conditions is held invalid or illegal or unenforceable for any reason by any court of competent jurisdiction, such provision shall be severed and the remainder of provisions of the terms and conditions shall continue in full force and effect as if the Term of Use had been executed with the invalid, illegal or unenforceable provision eliminated.
11. If there are any discrepancies in the information provided, please bring it to attention of Datanet for suitable rectification measures.

**Buy Online This Complete Book At
Datanet India eBooks Store**

www.indiastatpublications.com

or go directly at

[http://www.indiastatpublications.com/
Assembly_factbook/Jharkhand/Godda/ Jarmundi](http://www.indiastatpublications.com/Assembly_factbook/Jharkhand/Godda/Jarmundi)

 **india**stat**elections**

ISBN : 978-93-5301-986-0



9 789353 019860