



Jharkhand

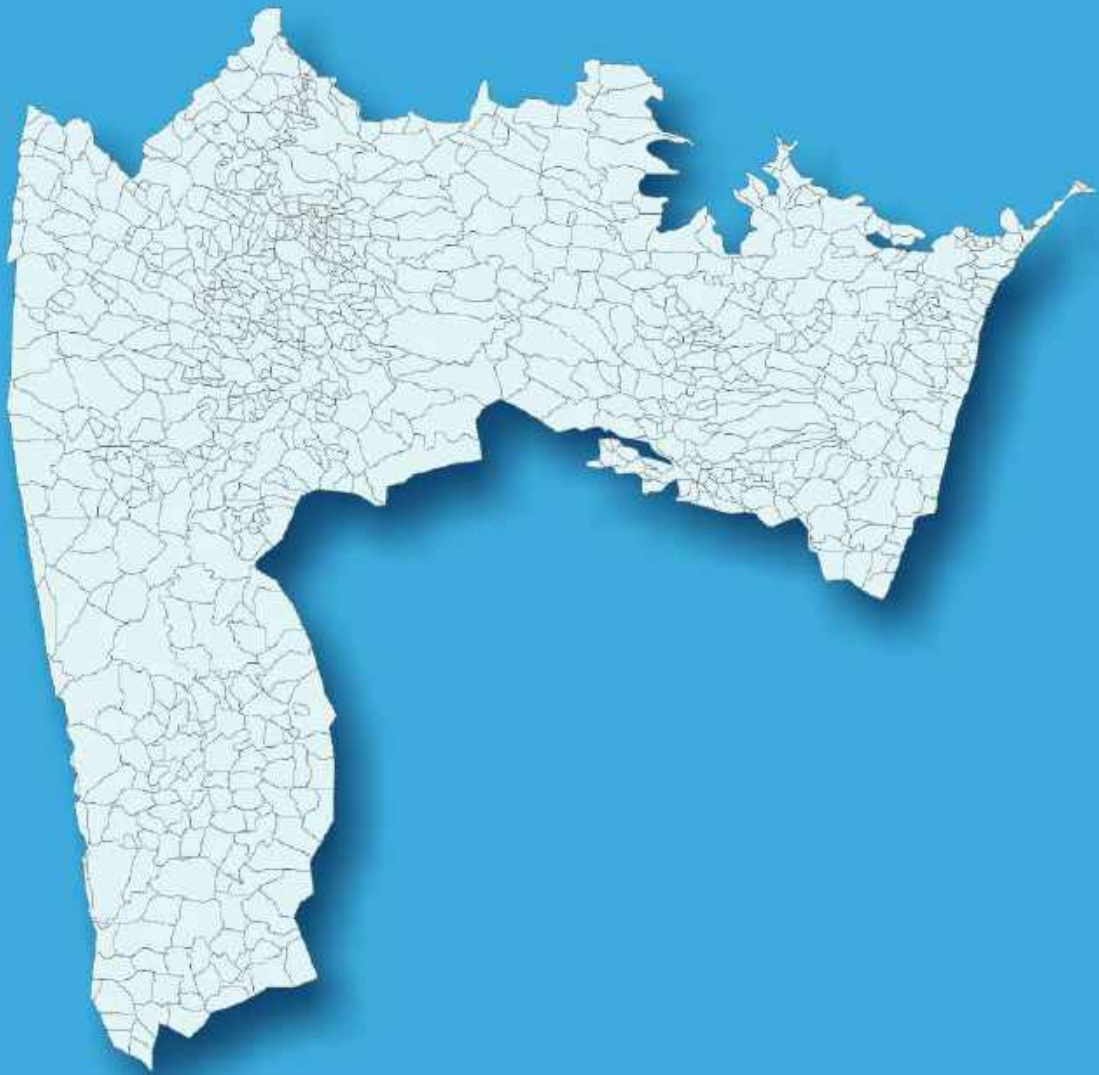
Assembly Factbook™

Barhait Assembly Constituency



Key Electoral Data of Barhait
Assembly Constituency (Vidhan Sabha)

Jharkhand
Assembly FactbookTM
Barhait Assembly Constituency



Barhait Vidhan Sabha

Editor & Director

Dr. R.K. Thukral

Research Editor

Dr. Shafeeq Rahman

Compiled, Researched and Published by Datanet India Pvt. Ltd.

D-100, 1st Floor,

Okhla Industrial Area, Phase-I,
New Delhi- 110020.

Ph.: 91-11- 43580781-84

Email : support@indiastatpublications.com

Website : www.indiastatelections.com

Online Book Store :

www.indiastatpublications.com

Report No. : AFB/JH-03-0125

ISBN : 978-93-5301-949-5

First Edition : January, 2018

Eighth Updated Edition : January, 2025

Price : Rs. 11500/-

US\$ 310

© **Datanet India Pvt. Ltd.**

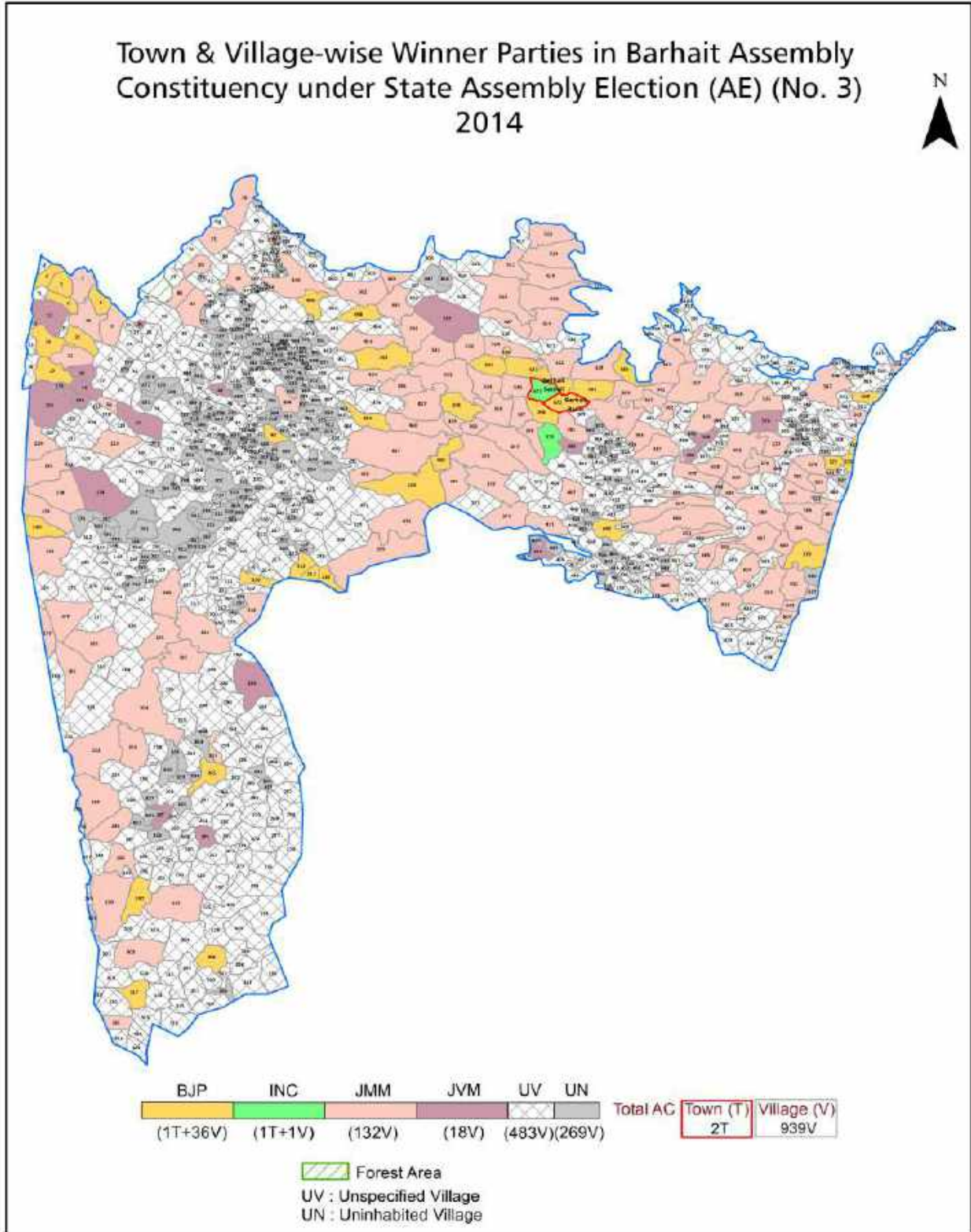
All rights reserved. No part of this book may be reproduced, stored in a retrieval system or transmitted in any form or by any means, mechanical photocopying, photographing, scanning, recording or otherwise without the prior written permission of the publisher. Please refer to Disclaimer at page no. 218 for the use of this publication.

Printed in India

Contents

No.	Particulars	Page No.
	Introduction	
1	Assembly Constituency - (Vidhan sabha) at a Glance Features of Assembly as per Delimitation Commission of India (2008)	1-2
	Location and Political Maps	
2	Location Map Boundaries of Assembly Constituency - (Vidhan sabha) in District Boundaries of Assembly Constituency under Parliamentary Constituency - (Lok sabha) Town & Village-wise Winner Parties- 2024-PE, 2024-AE, 2019-PE, 2019-AE, 2014-PE, 2014-AE and 2009-PE	3-11
	Administrative Setup (2011)	
3	District Sub-district Towns Villages Inhabited Villages Uninhabited Villages Village Panchayat Intermediate Panchayat	12-47
	Demographics (2011)	
4	Population Households Rural/Urban Population Towns and Villages by Population Size Sex Ratio (Total & 0-6 Years) Religious Population Social Population Literacy Rate	48-49
	Electoral Features	
5	Important Dates of Last Elections Held Electors by Gender Service Electors Voters Voters Turnout Polling Stations & Average Number of Electors per Polling Station Electors by Age Group Present Elected Representatives	50-55
	Historical Summary Election Results	
6	Vote Share of Major Parties Winning Margin (Number & Percentage) Polarity of Parties Summary Result of Assembly Segment of Parliamentary Elections 2024, 2019, 2014, 2009 and 2004 Summary Result of Assembly Elections 2024, 2019, 2014, 2009 and 2005	56-67
	Polling Station Level Election Results	
7	Name and Number of Polling Station 2024-PE, 2024-AE, 2019-PE, 2019-AE, 2014-PE, 2014-AE and 2009-PE Polling Station-wise Electors, Voters & Voters Turnout 2024-PE, 2024-AE, 2019-PE, 2019-AE, 2014-PE, 2014-AE and 2009-PE Polling Station wise Elections Results 2024-PE, 2024-AE, 2019-PE, 2019-AE, 2014-PE, 2014-AE and 2009-PE	68-195
	Share of Assembly Constituency	
8	Share of Assembly Constituency - (Vidhan sabha) in State, District and Parliamentary Constituency - (Lok sabha)	196
	Socio-Economic Amenities (2011)	
9	Access to Administrative Units Agricultural, Manufacturing and Industrial Commodities Demographic Indicators Education Health & Manpower Drinking Water Supply Sanitation Entertainment and Recreations Infrastructure Power Food Allocation Distribution and Marketing of Agriculture Commodities Infrastructure Transport and Road Infrastructure Communication Banking and Financial Services Land Use Irrigation Source	198-212
10	Abbreviation & Sources	214-216
11	Disclaimer	218

Location & Political Map



Administrative Setup

List of Village Panchayat & Intermediate Panchayat (Block) Name - 2011

Village Name	Village Panchayat Name	Intermediate Panchayat Name
Adro	-	Boarijor
Adro	Ghatiari	Sundarpahari
Adro	Bara Paktari	Sundarpahari
Alakocha	-	Barhait
Amarbhita	Taljhari	Pathna
Amarpur	Lakhipur	Pathna
Ambadiha	Kusbila	Boarijor
Ambare	Bara Dighi	Pathna
Ambarpur Bedo	Baramasia	Barhait
Ambarpur Maqo	Baramasia	Barhait
Amdanda	Amdanda	Pathna
Amdanda	Amdanda	Pathna
Amgachhi	Kenduwa	Pathna
Amjhor	Rajabhita	Boarijor
Amjhor	Modi Kola	Pathna
Amjora	Tilabad	Sundarpahari
Amtola	Sanmani	Barhait
Angbali	Chandana	Sundarpahari
Argandi	Simra	Barhait
Arjunpur	Arjunpur	Pathna
Asanbani	Sanmani	Barhait
Asanjori	Sanmani	Barhait
Asripara	Goradih	Sundarpahari
Atgawan	Sibapahar	Pathna
Babupur	Susni	Sundarpahari
Babupur	Panchkatiyabazar	Barhait
Bade	Amdanda	Pathna
Badegoda Bedo	Bhognadih	Barhait
Badegoda Maqo	Bhgandih	Barhait

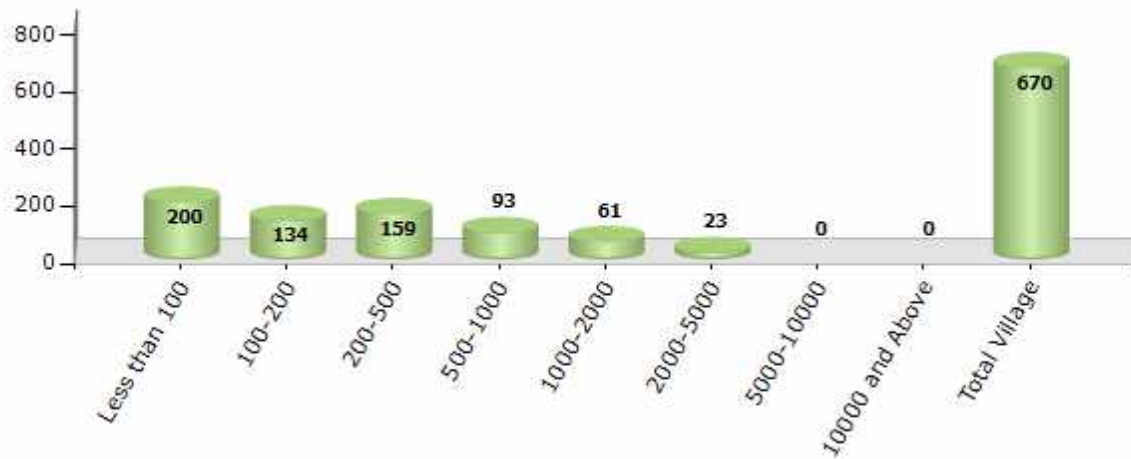
Contd....

Demographics

Number of Villages by Population Size - 2011

Less than 100	100-200	200-500	500-1000	1000-2000	2000-5000	5000-10000	10000 and Above	Total Village
200	134	159	93	61	23	0	0	670

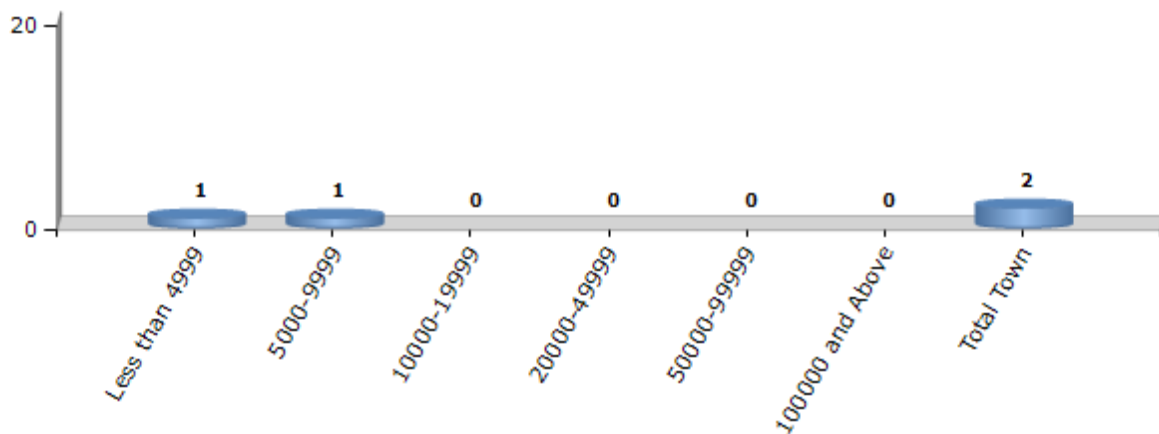
Number of Villages by Population Size - 2011



Number of Towns by Population Size - 2011

Less than 4999	5000-9999	10000-19999	20000-49999	50000-99999	100000 and Above	Total Town
1	1	0	0	0	0	2

Number of Towns by Population Size - 2011

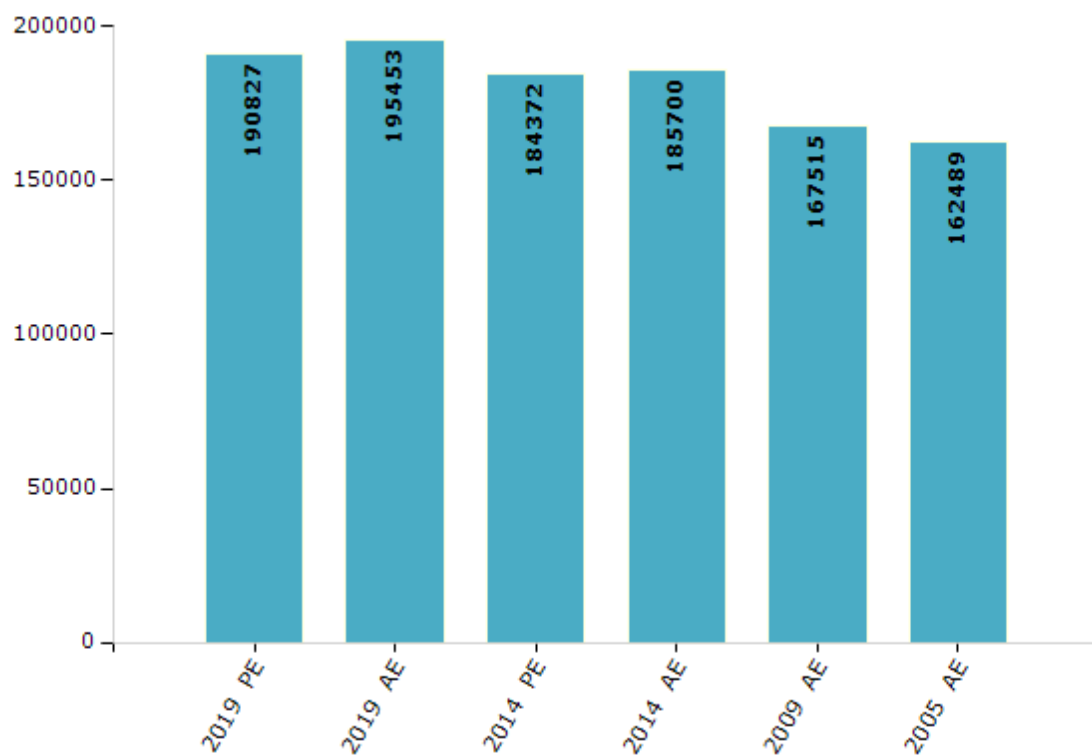


Electoral Features

Electors by Male & Female

Year	Male	Female	Others	Total	Year	Male	Female	Others	Total
2019 PE	96670	94156	1	190827	2009 PE	-	-	-	-
2019 AE	98617	96835	1	195453	2009 AE	84041	83474	-	167515
2014 PE	93401	90971	0	184372	2005 AE	82268	80221	-	162489
2014 AE	93990	91710	0	185700	2004 PE	-	-	-	-

Number of Electors



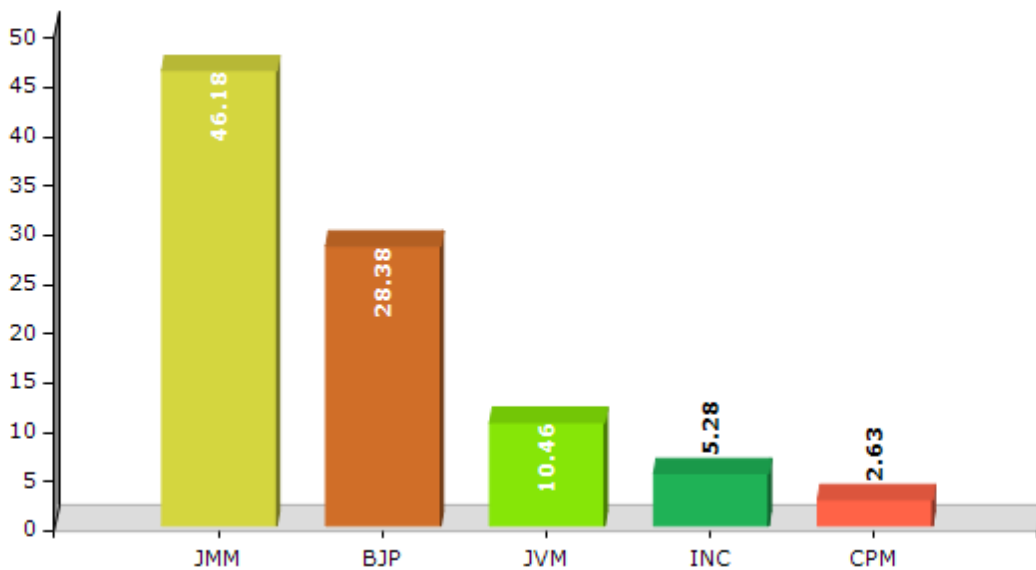
Note : AE : Assembly Election, PE : Assembly Segment of Parliamentary Election

Historical Summary Election Results

Summary Result of Assembly Election - 2014

Candidate Name	Party	Votes	Votes %
Hemant Soren	JMM	62515	46.18
Hemlal Murmu	BJP	38428	28.38
Simon Malto	JVM	14161	10.46
Monika Kisku	INC	7151	5.28
Sanatan Murmu	CPM	3555	2.63
Mangal Hansda	IND	1274	0.94
Chhoto Hansda	IND	1270	0.94
Kalda Tudu	BMUP	1237	0.91
Nilan Soren	IND	1187	0.88
Budan Hembram	SHS	1088	0.8
Dilip Kumar Maraiya	LJVM	1054	0.78
	NOTA	2462	1.82

Votes Percentage of Top Parties - 2014



Polling Station Level Election Results

Number and Name of Polling Stations (PS) (2019 AE)

Number of Polling Stations	Name of Polling Stations	Number of Polling Stations	Name of Polling Stations
1	Primary School Lilatari	22	Anganbari Centre Amarpur
2	Upgraded High School Kero Bazar (North Part)	23	Upgraded Middle School Malbhitha
3	Upgraded High School Kero Bazar (South Part)	24	Primary School Kairasol (East Part)
4	Upgraded Middle School Kushbilla (North Part)	25	Primary School Kairasol (West Part)
5	Upgraded Middle School Kushbilla (South Part)	26	Primary School Chhota Kerlo (Rohadi)
6	Upgraded Middle School Bara Dumarhil	27	Upgraded High School Bhalgora Dumaria (North Parth)
7	Upgraded Middle School Dhamni	28	Upgraded High School Bhalgora Dumaria (South Parth)
8	Middle School Bhadaria	29	Upgraded Middle School Bara Telo
9	Primary School Litti	30	Upgraded Middle School Tulsipur
10	Primary School Amjhor	31	Primary School Garbhutola
11	Govt. Basic School Rajabhitha	32	Anganbari Centre Adro
12	Primary School Chhota Kendua	33	Midle School Bansjori (North Part)
13	Upgraded Middle School Uparbandha	34	Midle School Bansjori (South Part)
14	Upgraded Middle School Narayanpur	35	Prithvi Chandra Kisku Project High School Kawadhab
15	Primary School Rohra (East Part)	36	Upgraded Middle School Khairibari
16	Primary School Rohra (West Part)	37	Primary School Building Chatra
17	Primary School Rajapokhar	38	Upgraded High School Ghatiyari (North Part)
18	Govt. Upgraded Middle School Devipur	39	Upgraded High School Ghatiyari (South Part)
19	Upgraded Middle School Ratanpur	40	Panchayat Building Ghatiyari (North Part)
20	Upgraded Middle School Bara Amarpur	41	Panchayat Bhawan Ghatiyari (South Part)
21	Upgraded Primary School Basdanda	42	Upgraded Middle School Mahuatarn

Contd....

Polling Station Level Election Results

Polling Station-wise Votes Secured by Overall Top Five Parties in Barhait Assembly in Assembly Election (AE) under Rajmahal Parliamentary Constituency in Jharkhand (2019)

Number of Polling Station	Winner - Hemant Soren (JMM)	Runner-up - Simon Malto (BJP)	3rd - Hopna Tudu (JVM)	4th - Gamliyel Hembrom (AJSUP)	5th - Samuel Kumar Maraiya (LJP)	NOTA	Other	Total Votes Secured
36	256	345	6	8	6	6	32	659
37	427	147	6	12	13	11	33	649
38	127	250	1	0	2	11	13	404
39	105	242	1	4	1	3	19	375
40	175	171	12	5	3	4	11	381
41	254	32	3	3	1	3	13	309
42	508	149	6	9	9	6	17	704
43	187	160	3	2	3	3	7	365
44	202	106	4	9	4	6	25	356
45	160	259	1	2	10	11	28	471
46	246	62	4	2	4	4	8	330
47	374	141	6	2	6	9	20	558
48	256	226	6	3	3	26	21	541
49	294	173	9	3	2	3	15	499
50	322	98	7	1	8	16	24	476
51	259	103	28	3	3	11	51	458
52	371	24	11	4	6	10	23	449
53	158	68	8	6	6	12	26	284
54	249	52	8	4	5	7	24	349
55	469	40	7	7	6	4	24	557
56	363	166	8	5	14	19	34	609
57	255	81	9	4	28	21	31	429
58	177	8	11	2	5	3	12	218
59	276	157	10	7	8	34	67	559
60	191	64	0	9	5	9	17	295
61	141	160	11	13	7	8	60	400
62	145	385	1	6	9	11	29	586
63	21	104	1	6	7	26	44	209
64	498	21	10	5	27	12	34	607
65	66	307	0	6	0	9	10	398
66	161	165	3	1	7	9	16	362
67	82	350	2	9	2	9	13	467
68	90	321	7	4	4	5	20	451
69	206	97	5	5	6	10	13	342
70	96	34	8	9	6	14	31	198

Contd....

Polling Station Level Election Results

Winner, Runner-up and 3rd Party Position & Winning Margin According to Polling Stations in Barhait Assembly in Assembly Election (AE) under Rajmahal Parliamentary Constituency in Jharkhand (2019)

Polling Station Number	Winner Party	Winner Votes (%)	Runner-up Party	Runner-up Votes (%)	Winning Margin Votes (%)	Third Party	Third Party Votes (%)	Other Votes (%)
71	BJP	80 (37.91)	JMM	39 (18.48)	41 (19.43)	BSP	34 (16.11)	58 (27.49)
72	JMM	251 (43.28)	BJP	192 (33.1)	59 (10.18)	BSP	20 (3.45)	117 (20.17)
73	BJP	252 (45.41)	JMM	231 (41.62)	21 (3.79)	JVM	15 (2.7)	57 (10.27)
74	JMM	215 (63.61)	BJP	79 (23.37)	136 (40.24)	LJP	9 (2.66)	35 (10.36)
75	JMM	236 (70.24)	BJP	55 (16.37)	181 (53.87)	LJP	10 (2.98)	35 (10.42)
76	JMM	110 (50.93)	BJP	72 (33.33)	38 (17.6)	JVM	7 (3.24)	27 (12.5)
77	JMM	352 (58.47)	BJP	159 (26.41)	193 (32.06)	JVM	15 (2.49)	76 (12.62)
78	BJP	310 (58.27)	JMM	90 (16.92)	220 (41.35)	BSP	29 (5.45)	103 (19.36)
79	BJP	232 (52.13)	JMM	73 (16.4)	159 (35.73)	BSP	44 (9.89)	96 (21.57)
80	JMM	116 (36.59)	BJP	92 (29.02)	24 (7.57)	BSP	24 (7.57)	85 (26.81)
81	JMM	276 (50.18)	BJP	220 (40)	56 (10.18)	AJSUP	9 (1.64)	45 (8.18)
82	JMM	178 (42.89)	BJP	133 (32.05)	45 (10.84)	BSP	51 (12.29)	53 (12.77)
83	JMM	359 (65.63)	BJP	132 (24.13)	227 (41.5)	JVM	11 (2.01)	45 (8.23)
84	JMM	333 (60.88)	BJP	131 (23.95)	202 (36.93)	IND (BH)	13 (2.38)	70 (12.8)
85	JMM	390 (74.14)	BJP	74 (14.07)	316 (60.07)	JVM	10 (1.9)	52 (9.89)
86	BJP	127 (40.97)	JMM	78 (25.16)	49 (15.81)	BSP	32 (10.32)	73 (23.55)
87	BJP	128 (40.13)	JMM	103 (32.29)	25 (7.84)	BSP	10 (3.13)	78 (24.45)
88	JMM	258 (73.3)	BJP	55 (15.63)	203 (57.67)	LJP	11 (3.13)	28 (7.95)
89	JMM	227 (69.42)	BJP	53 (16.21)	174 (53.21)	LJP	7 (2.14)	40 (12.23)
90	JMM	226 (55.67)	BJP	108 (26.6)	118 (29.07)	IND (LH)	12 (2.96)	60 (14.78)
91	BJP	174 (54.21)	JMM	63 (19.63)	111 (34.58)	AJSUP	12 (3.74)	72 (22.43)
92	JMM	425 (70.6)	BJP	51 (8.47)	374 (62.13)	IND (MNH)	23 (3.82)	103 (17.11)
93	JMM	307 (73.98)	BJP	47 (11.33)	260 (62.65)	JVM	9 (2.17)	52 (12.53)
94	JMM	227 (85.34)	BJP	26 (9.77)	201 (75.57)	AJSUP	4 (1.5)	9 (3.38)
95	JMM	290 (53.21)	BJP	176 (32.29)	114 (20.92)	AJSUP	25 (4.59)	54 (9.91)
96	JMM	244 (56.09)	BJP	125 (28.74)	119 (27.35)	JVM	12 (2.76)	54 (12.41)
97	JMM	520 (62.73)	BJP	134 (16.16)	386 (46.57)	JVM	57 (6.88)	118 (14.23)
98	JMM	454 (68.37)	BJP	108 (16.27)	346 (52.1)	JVM	32 (4.82)	70 (10.54)
99	JMM	400 (81.47)	JVM	51 (10.39)	349 (71.08)	BJP	19 (3.87)	21 (4.28)
100	JMM	137 (66.5)	BJP	40 (19.42)	97 (47.08)	JVM	6 (2.91)	23 (11.17)
101	BJP	208 (49.76)	JMM	146 (34.93)	62 (14.83)	JVM	28 (6.7)	36 (8.61)
102	BJP	243 (48.99)	JMM	198 (39.92)	45 (9.07)	JVM	22 (4.44)	33 (6.65)
103	JMM	387 (62.32)	BJP	102 (16.43)	285 (45.89)	JVM	49 (7.89)	83 (13.37)
104	JMM	156 (66.38)	BJP	50 (21.28)	106 (45.1)	JVM	9 (3.83)	20 (8.51)
105	BJP	309 (49.05)	JMM	239 (37.94)	70 (11.11)	IND (LH)	22 (3.49)	60 (9.52)

Contd....

Socio-Economic Amenities - Rural

Access to Education Facilities

Particulars	Number of Villages (% of Population)				
	Available	Not Available	If Not Available (Distance of Nearest Facility)		
			A	B	C
Govt. Primary School	384 (80)	286 (20)	132 (11)	60 (4)	18 (1)
Private Primary School	30 (7)	640 (93)	0 (0)	0 (0)	4 (0)
Govt. Middle School	133 (33)	537 (67)	231 (45)	175 (12)	62 (7)
Private Middle School	10 (3)	660 (97)	0 (0)	0 (0)	0 (0)
Govt. Secondary School	20 (6)	650 (94)	83 (17)	138 (25)	358 (47)
Private Secondary School	2 (1)	668 (99)	1 (0)	0 (0)	0 (0)
Govt. Senior Secondary School	6 (2)	664 (98)	17 (2)	56 (11)	521 (80)
Private Senior Secondary School	0 (0)	670 (100)	0 (0)	0 (0)	1 (0)
Govt. Arts and Science Degree College	0 (0)	670 (100)	4 (1)	43 (12)	552 (83)
Private Arts and Science Degree College	0 (0)	670 (100)	0 (0)	0 (0)	0 (0)
Govt. Engineering College	0 (0)	670 (100)	0 (0)	0 (0)	312 (32)
Private Engineering College	0 (0)	670 (100)	0 (0)	0 (0)	289 (64)
Govt. Medicine College	0 (0)	670 (100)	0 (0)	1 (0)	599 (96)
Private Medicine College	0 (0)	670 (100)	0 (0)	0 (0)	1 (0)
Govt. Management Institute	0 (0)	670 (100)	0 (0)	0 (0)	554 (82)
Private Management Institute	0 (0)	670 (100)	1 (0)	0 (0)	43 (13)
Govt. Polytechnic	0 (0)	670 (100)	1 (0)	0 (0)	595 (95)
Private Polytechnic	0 (0)	670 (100)	0 (0)	0 (0)	5 (1)
Govt. Vocational Training School/ITI	2 (0)	668 (100)	1 (0)	4 (0)	592 (95)
Private Vocational Training School/ITI	0 (0)	670 (100)	0 (0)	0 (0)	1 (0)
Govt. Non Formal Training Centre	2 (0)	668 (100)	15 (5)	65 (14)	506 (75)
Private Non Formal Training Centre	0 (0)	670 (100)	0 (0)	0 (0)	2 (0)
Govt. School For Disabled	0 (0)	670 (100)	0 (0)	10 (2)	477 (72)
Private School For Disabled	0 (0)	670 (100)	0 (0)	5 (1)	104 (20)
Government Others	2 (0)	668 (100)	0 (0)	22 (5)	566 (90)
Private Others	0 (0)	670 (100)	0 (0)	0 (0)	0 (0)

Note : Distance A : Less than 5 km; B : Between 5-10 km; C : 10+ km.; Source : Data Analysis is based on 2011 Census.

DISCLAIMER

The Terms of Use and Disclaimer of Datanet India Private Limited (hereinafter referred to as "Datanet") for use of this analysis report of **Barhait Assembly Constituency (Barhait Vidhan Sabha) :-**

1. **Assembly Factbook™** is a Registered Trade Mark owned by Datanet.
2. All the maps are sketched and graphical representation only and have not been drawn to the scale and also not to represent the actual geographical area or boundary of the unit.
3. The data for the aforesaid analysis is based on authentic sources and has been culled from the various publications of Census, CSO and NSSO for district and block level data, various central and state government departments, Central & State Elections Commissions and the concerned Returning Officers' releases, Electoral Rolls, Election results and allied publications, internal assessment, surveys, estimates and analysis. Therefore, certain adjustment of data at micro level may have been done to arrive closer to the macro data.
4. Data have been provided on an "As Is" and "As AVAILABLE" basis
5. The colours shown in the maps or diagram and charts of a particular party, alliance or AC are indicative and do not represent them.
6. This publication which includes maps, sheets, graphs and data would be the property under copyright of Datanet only. The user may use these for its internal study, analysis and research purposes. It's public display, re-selling or any commercial uses by the user are not allowed.
7. Datanet has taken due care and caution in compilation and processing of data and allied information, but does not guarantee the accuracy, adequacy or completeness of any information/analysis and will be not responsible for any errors or omissions or for the results obtained from the use of such information/analysis.
8. All the contents for the publication have been culled from various authentic sources and Datanet reasonably believes such sources to be reliable, but does not make any representations, express or implied as to the accuracy or fitness of use of such information. The information or contents of the information/analysis do not constitute advice and should not be relied upon in making (or refraining from making) any decision. Any reliance placed upon the information provided by Datanet is the sole responsibility and strictly at the user's risk.
9. In no event will Datanet be liable for any damages (including, without limitation, damages for loss of business projects, or loss of profits) arising in contract, tort or otherwise from the use of or inability to use any of its contents, or from any action taken (or refrained from being taken) as a result of using the analysis or any of its contents. Datanet its directors, owners, editors, officials, employees, distributor and agents or any associate will not be liable for any errors in the information contained or any consequences arising from the use of the contents of the provided information/analysis.
10. If any provision of these terms and conditions is held invalid or illegal or unenforceable for any reason by any court of competent jurisdiction, such provision shall be severed and the remainder of provisions of the terms and conditions shall continue in full force and effect as if the Term of Use had been executed with the invalid, illegal or unenforceable provision eliminated.
11. If there are any discrepancies in the information provided, please bring it to attention of Datanet for suitable rectification measures.

**Buy Online This Complete Book At
Datanet India eBooks Store**

www.indiastatpublications.com

or go directly at

[http://www.indiastatpublications.com/
Assembly_factbook/Jharkhand/Rajmahal/ Barhait](http://www.indiastatpublications.com/Assembly_factbook/Jharkhand/Rajmahal/Barhait)

 **india**stat**elections**

ISBN : 978-93-5301-949-5

