



Jharkhand

Assembly Factbook™

Kanke Assembly Constituency



Key Electoral Data of Kanke
Assembly Constituency (Vidhan Sabha)

Jharkhand

Assembly Factbook™

Kanke Assembly Constituency



Kanke Vidhan Sabha

Editor & Director

Dr. R.K. Thukral

Research Editor

Dr. Shafeeq Rahman

Compiled, Researched and Published by Datanet India Pvt. Ltd.

D-100, 1st Floor,

Okhla Industrial Area, Phase-I,
New Delhi- 110020.

Ph.: 91-11- 43580781-84

Email : support@indiastatpublications.com

Website : www.indiastatelections.com

Online Book Store :

www.indiastatpublications.com

Report No. : AFB/JH-65-0125

ISBN : 978-93-5301-990-7

First Edition : January, 2018

Eighth Updated Edition : January, 2025

Price : Rs. 11500/-

US\$ 310

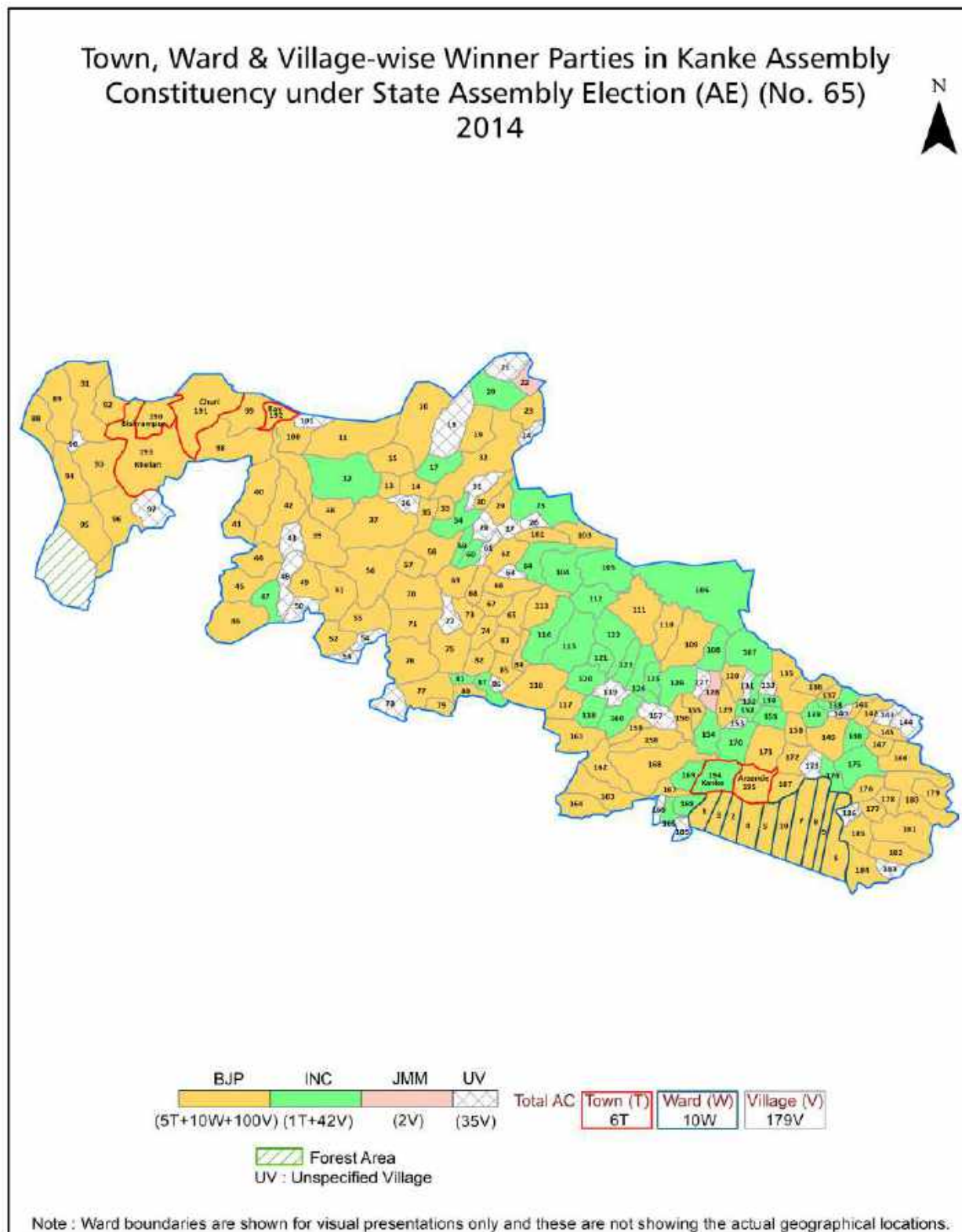
© Datanet India Pvt. Ltd.

All rights reserved. No part of this book may be reproduced, stored in a retrieval system or transmitted in any form or by any means, mechanical photocopying, photographing, scanning, recording or otherwise without the prior written permission of the publisher. Please refer to Disclaimer at page no. 318 for the use of this publication.

Printed in India

No.	Particulars	Page No.
	Introduction	
1	Assembly Constituency - (Vidhan sabha) at a Glance Features of Assembly as per Delimitation Commission of India (2008)	1-2
	Location and Political Maps	
2	Location Map Boundaries of Assembly Constituency - (Vidhan sabha) in District Boundaries of Assembly Constituency under Parliamentary Constituency - (Lok sabha) Town, Ward & Village-wise Winner Parties-2024-PE, 2024-AE, 2019-PE, 2019-AE, 2014-PE, 2014-AE, 2009-PE and 2009-AE	3-11
	Administrative Setup (2011)	
3	District Sub-district Towns Villages Inhabited Villages Uninhabited Villages Village Panchayat Intermediate Panchayat	12-22
	Demographics (2011)	
4	Population Households Rural/Urban Population Towns, Ward and Villages by Population Size Sex Ratio (Total & 0-6 Years) Religious Population Social Population Literacy Rate	23-25
	Electoral Features	
5	Important Dates of Last Elections Held Electors by Gender Service Electors Voters Voters Turnout Polling Stations & Average Number of Electors per Polling Station Electors by Age Group Present Elected Representatives	26-31
	Historical Summary Election Results	
6	Vote Share of Major Parties Winning Margin (Number & Percentage Polarity of Parties Summary Result of Assembly Segment of Parliamentary Elections 2024, 2019, 2014, 2009 and 2004 Summary Result of Assembly Elections 2024, 2019, 2014, 2009 and 2005	32-43
	Polling Station Level Election Results	
7	Name and Number of Polling Station 2024-PE, 2024-AE, 2019-PE, 2019-AE, 2014-PE, 2014-AE, 2009-PE and 2009-AE Polling Station-wise Electors, Voters & Voters Turnout 2024-PE, 2024-AE, 2019-PE, 2019-AE, 2014-PE, 2014-AE, 2009-PE and 2009-AE Polling Station wise Elections Results 2024-PE, 2024-AE, 2019-PE, 2019-AE, 2014-PE, 2014-AE, 2009-PE and 2009-AE	44-295
	Share of Assembly Constituency	
8	Share of Assembly Constituency - (Vidhan sabha) in State, District and Parliamentary Constituency - (Lok sabha)	296
	Socio-Economic Amenities (2011)	
9	Access to Administrative Units Agricultural, Manufacturing and Industrial Commodities Demographic Indicators Education Health & Manpower Drinking Water Supply Sanitation Entertainment and Recreations Infrastructure Power Food Allocation Distribution and Marketing of Agriculture Commodities Infrastructure Transport and Road Infrastructure Communication Banking and Financial Services Land Use Irrigation Source	298-312
10	Abbreviation & Sources	314-316
11	Disclaimer	318

Location & Political Map



Administrative Setup

List of Village Panchayat & Intermediate Panchayat (Block) Name - 2011

Village Name	Village Panchayat Name	Intermediate Panchayat Name
Aktan	Sarle	Burmu
Anatu	Chaingara	Burmu
Ara	Ojhasaram	Burmu
Ara	Chakme	Burmu
Arid	Sarle	Burmu
Arra (Arara)	Gurgain	Burmu
Babhne (Bamne)	Bamne	Khelari
Bagda	Uruguttu	Kanke
Balu	Kondoro	Kanke
Bangaon	Burmu	Burmu
Banhara	Ulatu	Kanke
Baraudi	Khakhra	Burmu
Bare	Bare	Burmu
Barhu	Barhu	Kanke
Barkamuru	Umedanda	Burmu
Basri (Banoari)	Khakhra	Burmu
Batta	Sathkanadu	Kanke
Benti	Uruguttu	Kanke
Berwari	-	Burmu
Bhantboreya	Khakhra	Burmu
Binja	Chapra	Burmu
Boreya	Boreya	Kanke
Bukru	Badu	Kanke
Burmu	Burmu	Burmu
Buti	-	Kanke
Chaingara	Chaingara	Burmu
Chakme	Chakme	Burmu
Chalniya (Chalaniya)	Umedanda	Burmu
Chama	Badu	Kanke

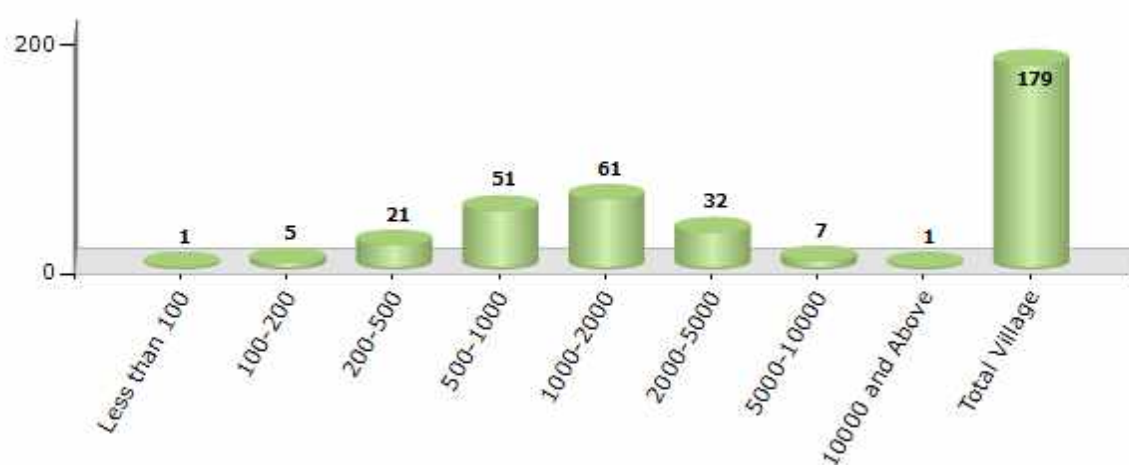
Contd....

Demographics

Number of Villages by Population Size - 2011

Less than 100	100-200	200-500	500-1000	1000-2000	2000-5000	5000-10000	10000 and Above	Total Village
1	5	21	51	61	32	7	1	179

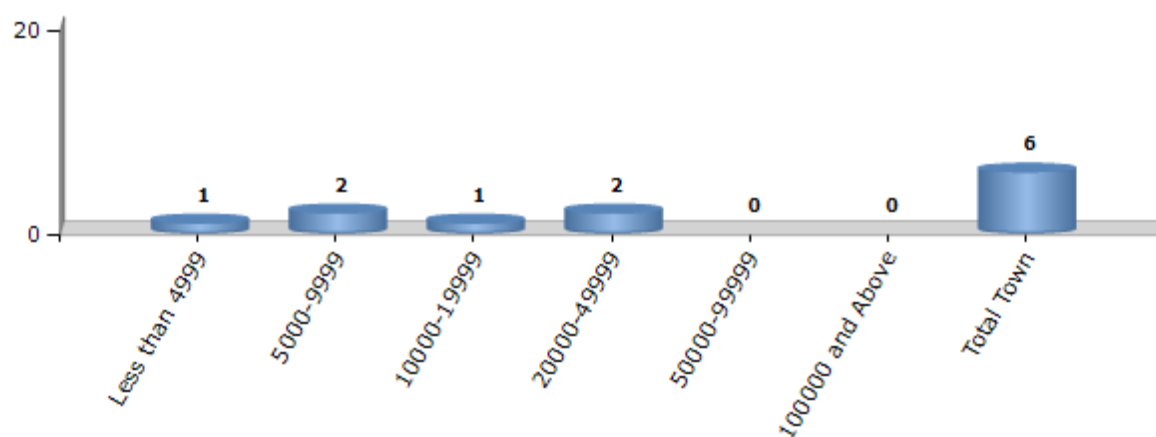
Number of Villages by Population Size - 2011



Number of Towns by Population Size - 2011

Less than 4999	5000-9999	10000-19999	20000-49999	50000-99999	100000 and Above	Total Town
1	2	1	2	0	0	6

Number of Towns by Population Size - 2011

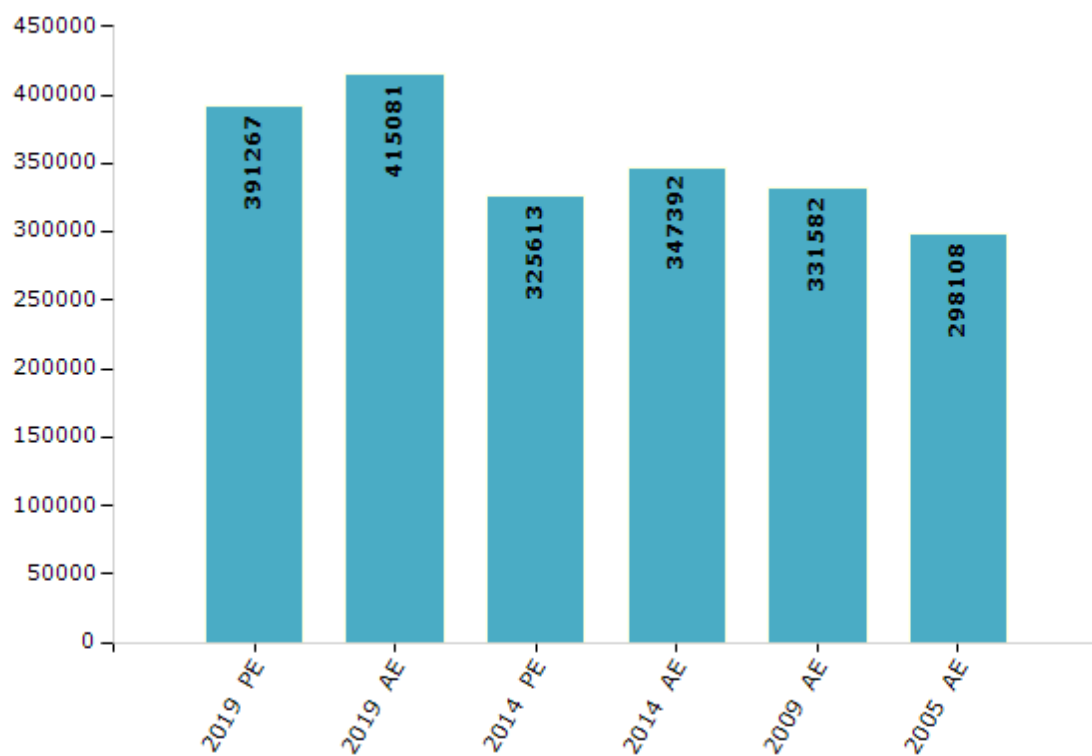


Electoral Features

Electors by Male & Female

Year	Male	Female	Others	Total	Year	Male	Female	Others	Total
2019 PE	206773	184494	0	391267	2009 PE	-	-	-	-
2019 AE	216356	198720	5	415081	2009 AE	177952	153630	-	331582
2014 PE	172405	153208	0	325613	2005 AE	162523	135585	-	298108
2014 AE	184271	163121	0	347392	2004 PE	-	-	-	-

Number of Electors



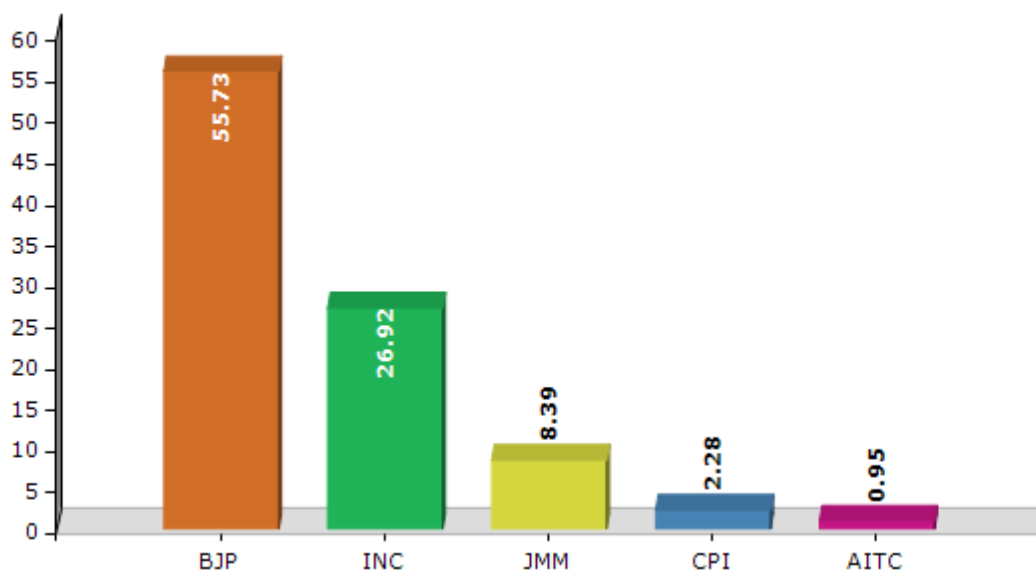
Note : AE : Assembly Election, PE : Assembly Segment of Parliamentary Election

Historical Summary Election Results

Summary Result of Assembly Election - 2014

Candidate Name	Party	Votes	Votes %
Dr. Jitu Charan Ram	BJP	115702	55.73
Suresh Kumar Baitha	INC	55898	26.92
Ashok Kumar Nag	JMM	17411	8.39
Subedar Ram	CPI	4735	2.28
Niranjan Kalindi	AITC	1968	0.95
Rajesh Rajak	IND	1630	0.79
Vijay Ram	IND	1303	0.63
Kamlesh Ram	IND	1279	0.62
Amit Kumar	NSAM	1207	0.58
Ranjeet Bauri	IND	1070	0.52
Avadhesh Baitha	IND	869	0.42
Bajrang Baitha	SP	706	0.34
Dhanraj Kumar	CPIM	560	0.27
Chandra Rashmi	SAP	434	0.21
	NOTA	2851	1.37

Votes Percentage of Top Parties - 2014



Polling Station Level Election Results

Number and Name of Polling Stations (PS) (2019 AE)

Number of Polling Stations	Name of Polling Stations	Number of Polling Stations	Name of Polling Stations
1	Govt. Upgraded M.S. (North Side) Lapra	22	Samudayik Bhawan Baltharwa Khalari
2	Govt. Upgraded M.S. (South Side) Lapra	23	Gram Panchayt Bhawan Khalari
3	Adarsh High School (East Part) Masculusiganj Hesalong	24	Govt. M.S. Karkatta Bishrampur (Room No-1)
4	Adarsh High School (West Part) Masculusiganj Hesalong	25	Govt. M.S. Karkatta Bishrampur (Room No-2)
5	Govt. Upgraded Middle School Nawadih	26	Govt. M.S. Karkatta Bishrampur (Room No-3)
6	Sarswati Shishu Mandir Ashok Vihar Colony, Tumang (East Part)	27	Govt. M.S. Karkatta Bishrampur (Room No-4)
7	Sarswati Shishu Mandir Ashok Vihar Colony, Tumang (Middle Part)	28	Prastawit A.C.C. High School Khalari Bukbuka (East Part)
8	Sarswati Shishu Mandir Ashok Vihar Colony, Tumang (West Part)	29	Prastawit A.C.C. High School Khalari Bukbuka (West Part)
9	Sarswati Vidya Mandir Karkatta	30	D.A.V. High School Khalari, Bukbuka (Room No. 1)
10	Govt. Primery School Mayapur Room No.-1,	31	D.A.V. High School Khalari, Bukbuka (Room No. 4)
11	Govt. Primery School Mayapur Room No.-1,	32	D.A.V. High School Khalari, Bukbuka (Room No. 2)
12	Gram Panchyat Office Konka (East Part)	33	D.A.V. High School Khalari, Bukbuka (Room No. 3)
13	Gram Panchyat Office Konka (West Part)	34	Govt. P.S. Hoyer (North Part)
14	Govt. Upgraded M.S. Dulli	35	Govt. P.S. Hoyer (South Part)
15	Janta High School Hutap (Room No.-1)	36	Orria M. S. Churi Mohan Nagar (East Part)
16	Janta High School Hutap (Room No.-2)	37	Orria M. S. Churi Mohan Nagar (West Part)
17	Janta High School Hutap (Room No.-3)	38	Govt. Middle School Dakra (Room No. 1)
18	Janta High School Hutap (Room No.-4)	39	Govt. Middle School Dakra (Room No. 2)
19	Janta High School Hutap (Room No.-5)	40	Pariyojana Office C.C.L. Dakra (Room No. 1)
20	Co-Operative Society Bhawan Jehali Tand Khalari (East Part)	41	Pariyojana Office C.C.L. Dakra (Room No. 2)
21	Co-Operative Society Bhawan Jehali Tand Khalari (West Part)	42	Pariyojana Office C.C.L. Dakra (West Part)

Contd....

Polling Station Level Election Results

Polling Station-wise Votes Secured by Overall Top Five Parties in Kanke Assembly in Assembly Election (AE) under Ranchi Parliamentary Constituency in Jharkhand (2019)

Number of Polling Station	Winner - Sammari Lal (BJP)	Runner-up - Suresh Kumar Baitha (INC)	3rd - Ramjeet Ganjhu (AJSUP)	4th - Kamlesh Ram (JVM)	5th - Ashok Kumar Nag (JD(U))	NOTA	Other	Total Votes Secured
36	343	146	43	22	1	4	14	573
37	182	98	7	53	2	1	15	358
38	178	99	25	1	1	0	6	310
39	213	78	43	3	1	4	14	356
40	201	132	87	14	3	9	14	460
41	211	292	25	10	1	6	10	555
42	283	125	20	8	3	4	7	450
43	192	90	34	7	1	0	4	328
44	192	102	20	32	1	3	1	351
45	292	222	37	6	3	0	13	573
46	168	103	12	2	0	4	3	292
47	197	137	38	11	3	4	11	401
48	205	110	37	28	0	4	10	394
49	111	88	22	13	1	2	5	242
50	147	138	57	6	3	4	8	363
51	185	115	84	7	6	8	35	440
52	137	70	104	9	3	0	3	326
53	362	158	133	25	2	1	8	689
54	407	32	323	11	4	9	43	829
55	287	105	122	4	1	3	4	526
56	185	93	181	7	3	11	11	491
57	179	30	285	6	0	6	21	527
58	227	45	259	6	11	3	20	571
59	32	10	231	6	2	4	17	302
60	107	28	475	11	9	9	36	675
61	263	111	93	5	3	5	32	512
62	128	235	127	35	4	11	47	587
63	71	49	304	76	4	20	44	568
64	52	23	226	3	1	5	10	320
65	61	111	298	12	1	4	10	497
66	234	275	110	6	6	7	22	660
67	209	9	173	2	2	9	20	424
68	217	264	115	96	3	12	39	746
69	211	175	80	36	5	8	15	530
70	334	100	146	16	5	10	34	645

Contd....

Polling Station Level Election Results

Winner, Runner-up and 3rd Party Position & Winning Margin According to Polling Stations in Kanke Assembly in Assembly Election (AE) under Ranchi Parliamentary Constituency in Jharkhand (2019)

Polling Station Number	Winner Party	Winner Votes (%)	Runner-up Party	Runner-up Votes (%)	Winning Margin Votes (%)	Third Party	Third Party Votes (%)	Other Votes (%)
71	INC	442 (68.63)	JVM	43 (6.68)	399 (61.95)	AJSUP	32 (4.97)	127 (19.72)
72	INC	206 (41.2)	BJP	111 (22.2)	95 (19)	JVM	109 (21.8)	74 (14.8)
73	BJP	304 (71.03)	AJSUP	49 (11.45)	255 (59.58)	INC	43 (10.05)	32 (7.48)
74	BJP	387 (62.42)	AJSUP	149 (24.03)	238 (38.39)	INC	53 (8.55)	31 (5)
75	BJP	367 (46.28)	INC	200 (25.22)	167 (21.06)	AJSUP	167 (21.06)	59 (7.44)
76	BJP	345 (48.05)	INC	190 (26.46)	155 (21.59)	AJSUP	162 (22.56)	21 (2.92)
77	BJP	274 (47.32)	AJSUP	174 (30.05)	100 (17.27)	INC	80 (13.82)	51 (8.81)
78	BJP	318 (42.57)	INC	200 (26.77)	118 (15.8)	AJSUP	187 (25.03)	42 (5.62)
79	AJSUP	245 (57.38)	BJP	142 (33.26)	103 (24.12)	INC	15 (3.51)	25 (5.85)
80	AJSUP	239 (68.88)	BJP	40 (11.53)	199 (57.35)	INC	13 (3.75)	55 (15.85)
81	BJP	342 (50)	AJSUP	249 (36.4)	93 (13.6)	INC	65 (9.5)	28 (4.09)
82	AJSUP	234 (40.41)	BJP	200 (34.54)	34 (5.87)	INC	105 (18.13)	40 (6.91)
83	AJSUP	276 (49.29)	BJP	156 (27.86)	120 (21.43)	INC	61 (10.89)	67 (11.96)
84	AJSUP	410 (83.33)	BJP	34 (6.91)	376 (76.42)	RTJHPR	9 (1.83)	39 (7.93)
85	BJP	206 (39.69)	INC	117 (22.54)	89 (17.15)	AJSUP	114 (21.97)	82 (15.8)
86	INC	173 (37.86)	AJSUP	143 (31.29)	30 (6.57)	BJP	88 (19.26)	53 (11.6)
87	AJSUP	121 (32.61)	BJP	104 (28.03)	17 (4.58)	INC	88 (23.72)	58 (15.63)
88	BJP	191 (38.74)	INC	132 (26.77)	59 (11.97)	AJSUP	121 (24.54)	49 (9.94)
89	BJP	206 (48.7)	INC	129 (30.5)	77 (18.2)	AJSUP	37 (8.75)	51 (12.06)
90	BJP	289 (39.75)	INC	232 (31.91)	57 (7.84)	AJSUP	99 (13.62)	107 (14.72)
91	BJP	317 (43.85)	AJSUP	206 (28.49)	111 (15.36)	INC	88 (12.17)	112 (15.49)
92	BJP	300 (56.07)	AJSUP	135 (25.23)	165 (30.84)	INC	55 (10.28)	45 (8.41)
93	BJP	333 (53.88)	INC	139 (22.49)	194 (31.39)	AJSUP	65 (10.52)	81 (13.11)
94	BJP	197 (51.3)	INC	131 (34.11)	66 (17.19)	AJSUP	27 (7.03)	29 (7.55)
95	BJP	274 (57.56)	INC	158 (33.19)	116 (24.37)	AJSUP	17 (3.57)	27 (5.67)
96	INC	253 (66.4)	BJP	78 (20.47)	175 (45.93)	AJSUP	24 (6.3)	26 (6.82)
97	BJP	281 (35.98)	INC	240 (30.73)	41 (5.25)	AJSUP	166 (21.25)	94 (12.04)
98	INC	158 (47.45)	BJP	81 (24.32)	77 (23.13)	AJSUP	60 (18.02)	34 (10.21)
99	INC	189 (39.21)	BJP	151 (31.33)	38 (7.88)	AJSUP	89 (18.46)	53 (11)
100	BJP	368 (56.53)	INC	143 (21.97)	225 (34.56)	AJSUP	112 (17.2)	28 (4.3)
101	BJP	291 (44.56)	INC	194 (29.71)	97 (14.85)	AJSUP	146 (22.36)	22 (3.37)
102	AJSUP	345 (38.08)	BJP	342 (37.75)	3 (0.33)	INC	150 (16.56)	69 (7.62)
103	INC	244 (45.1)	BJP	163 (30.13)	81 (14.97)	AJSUP	79 (14.6)	55 (10.17)
104	BJP	318 (41.68)	INC	256 (33.55)	62 (8.13)	AJSUP	144 (18.87)	45 (5.9)
105	BJP	304 (52.6)	INC	127 (21.97)	177 (30.63)	AJSUP	115 (19.9)	32 (5.54)

Contd....

Socio-Economic Amenities - Rural

Access to Education Facilities

Particulars	Number of Villages (% of Population)				
	Available	Not Available	If Not Available (Distance of Nearest Facility)		
			A	B	C
Govt. Primary School	157 (91)	22 (9)	16 (5)	2 (0)	0 (0)
Private Primary School	35 (36)	144 (64)	0 (0)	0 (0)	0 (0)
Govt. Middle School	75 (59)	104 (41)	72 (27)	24 (7)	2 (1)
Private Middle School	24 (26)	155 (74)	0 (0)	0 (0)	0 (0)
Govt. Secondary School	10 (13)	169 (87)	65 (33)	57 (25)	34 (12)
Private Secondary School	17 (23)	162 (77)	0 (0)	0 (0)	0 (0)
Govt. Senior Secondary School	4 (6)	175 (94)	18 (10)	50 (25)	104 (54)
Private Senior Secondary School	6 (7)	173 (93)	0 (0)	0 (0)	0 (0)
Govt. Arts and Science Degree College	0 (0)	179 (100)	1 (1)	23 (19)	153 (80)
Private Arts and Science Degree College	2 (0)	177 (100)	0 (0)	0 (0)	0 (0)
Govt. Engineering College	0 (0)	179 (100)	8 (4)	23 (14)	143 (76)
Private Engineering College	1 (3)	178 (97)	1 (0)	1 (0)	2 (2)
Govt. Medicine College	0 (0)	179 (100)	3 (2)	17 (15)	159 (83)
Private Medicine College	0 (0)	179 (100)	0 (0)	0 (0)	0 (0)
Govt. Management Institute	0 (0)	179 (100)	3 (2)	25 (12)	151 (86)
Private Management Institute	0 (0)	179 (100)	0 (0)	0 (0)	0 (0)
Govt. Polytechnic	0 (0)	179 (100)	7 (6)	16 (9)	154 (81)
Private Polytechnic	1 (3)	178 (97)	1 (1)	0 (0)	0 (0)
Govt. Vocational Training School/ITI	0 (0)	179 (100)	3 (2)	6 (5)	168 (92)
Private Vocational Training School/ITI	2 (1)	177 (99)	0 (0)	0 (0)	0 (0)
Govt. Non Formal Training Centre	1 (1)	178 (99)	3 (3)	31 (19)	143 (77)
Private Non Formal Training Centre	0 (0)	179 (100)	0 (0)	0 (0)	1 (0)
Govt. School For Disabled	0 (0)	179 (100)	4 (1)	17 (11)	147 (80)
Private School For Disabled	1 (2)	178 (98)	0 (0)	0 (0)	10 (5)
Government Others	0 (0)	179 (100)	4 (1)	16 (10)	148 (83)
Private Others	0 (0)	179 (100)	0 (0)	0 (0)	11 (6)

Note : Distance A : Less than 5 km; B : Between 5-10 km; C : 10+ km.; Source : Data Analysis is based on 2011 Census.

DISCLAIMER

The Terms of Use and Disclaimer of Datanet India Private Limited (hereinafter referred to as "Datanet") for use of this analysis report of **Kanke Assembly Constituency (Kanke Vidhan Sabha)** :-

1. **Assembly Factbook™** is a Registered Trade Mark owned by Datanet.
2. All the maps are sketched and graphical representation only and have not been drawn to the scale and also not to represent the actual geographical area or boundary of the unit.
3. The data for the aforesaid analysis is based on authentic sources and has been culled from the various publications of Census, CSO and NSSO for district and block level data, various central and state government departments, Central & State Elections Commissions and the concerned Returning Officers' releases, Electoral Rolls, Election results and allied publications, internal assessment, surveys, estimates and analysis. Therefore, certain adjustment of data at micro level may have been done to arrive closer to the macro data.
4. Data have been provided on an "As Is" and "As AVAILABLE" basis
5. The colours shown in the maps or diagram and charts of a particular party, alliance or AC are indicative and do not represent them.
6. This publication which includes maps, sheets, graphs and data would be the property under copyright of Datanet only. The user may use these for its internal study, analysis and research purposes. It's public display, re-selling or any commercial uses by the user are not allowed.
7. Datanet has taken due care and caution in compilation and processing of data and allied information, but does not guarantee the accuracy, adequacy or completeness of any information/analysis and will be not responsible for any errors or omissions or for the results obtained from the use of such information/analysis.
8. All the contents for the publication have been culled from various authentic sources and Datanet reasonably believes such sources to be reliable, but does not make any representations, express or implied as to the accuracy or fitness of use of such information. The information or contents of the information/analysis do not constitute advice and should not be relied upon in making (or refraining from making) any decision. Any reliance placed upon the information provided by Datanet is the sole responsibility and strictly at the user's risk.
9. In no event will Datanet be liable for any damages (including, without limitation, damages for loss of business projects, or loss of profits) arising in contract, tort or otherwise from the use of or inability to use any of its contents, or from any action taken (or refrained from being taken) as a result of using the analysis or any of its contents. Datanet its directors, owners, editors, officials, employees, distributor and agents or any associate will not be liable for any errors in the information contained or any consequences arising from the use of the contents of the provided information/analysis.
10. If any provision of these terms and conditions is held invalid or illegal or unenforceable for any reason by any court of competent jurisdiction, such provision shall be severed and the remainder of provisions of the terms and conditions shall continue in full force and effect as if the Term of Use had been executed with the invalid, illegal or unenforceable provision eliminated.
11. If there are any discrepancies in the information provided, please bring it to attention of Datanet for suitable rectification measures.

Buy Online This Complete Book At
Datanet India eBooks Store

www.indiastatpublications.com

or go directly at

[http://www.indiastatpublications.com/
Assembly_factbook/Jharkhand/Ranchi/ Kanke](http://www.indiastatpublications.com/Assembly_factbook/Jharkhand/Ranchi/Kanke)

 **india**stat**elections**

ISBN : 978-93-5301-990-7

