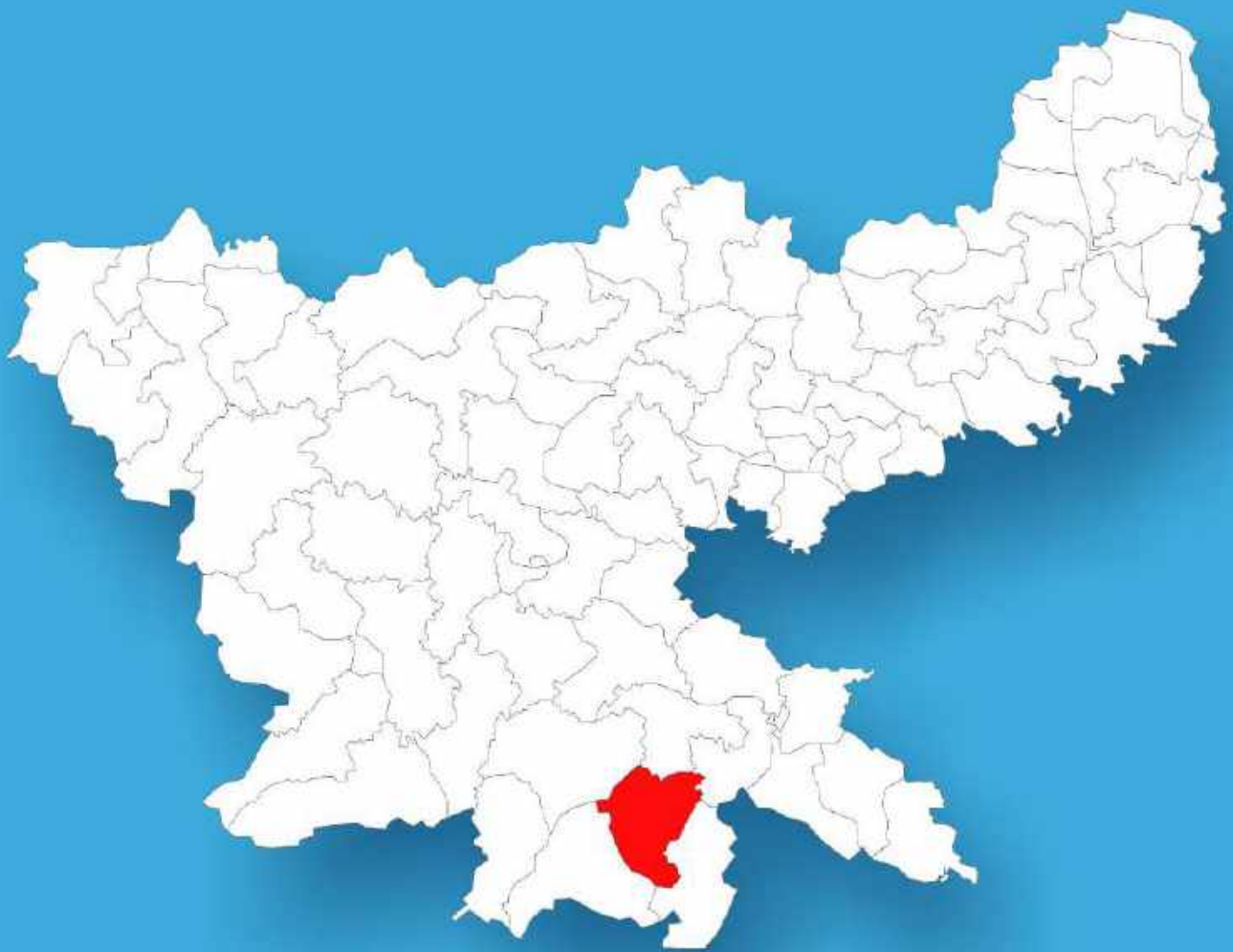




Jharkhand

Assembly Factbook™

Chaibasa Assembly Constituency



Key Electoral Data of Chaibasa
Assembly Constituency (Vidhan Sabha)

Jharkhand
Assembly FactbookTM
Chaibasa Assembly Constituency



Chaibasa Vidhan Sabha

Editor & Director

Dr. R.K. Thukral

Research Editor

Dr. Shafeeq Rahman

Compiled, Researched and Published by Datanet India Pvt. Ltd.

D-100, 1st Floor,

Okhla Industrial Area, Phase-I,
New Delhi- 110020.

Ph.: 91-11- 43580781-84

Email : support@indiastatpublications.com

Website : www.indiastatelections.com

Online Book Store :

www.indiastatpublications.com

Report No. : AFB/JH-52-0125

ISBN : 978-93-5301-959-4

First Edition : January, 2018

Eighth Updated Edition : January, 2025

Price : Rs. 11500/-

US\$ 310

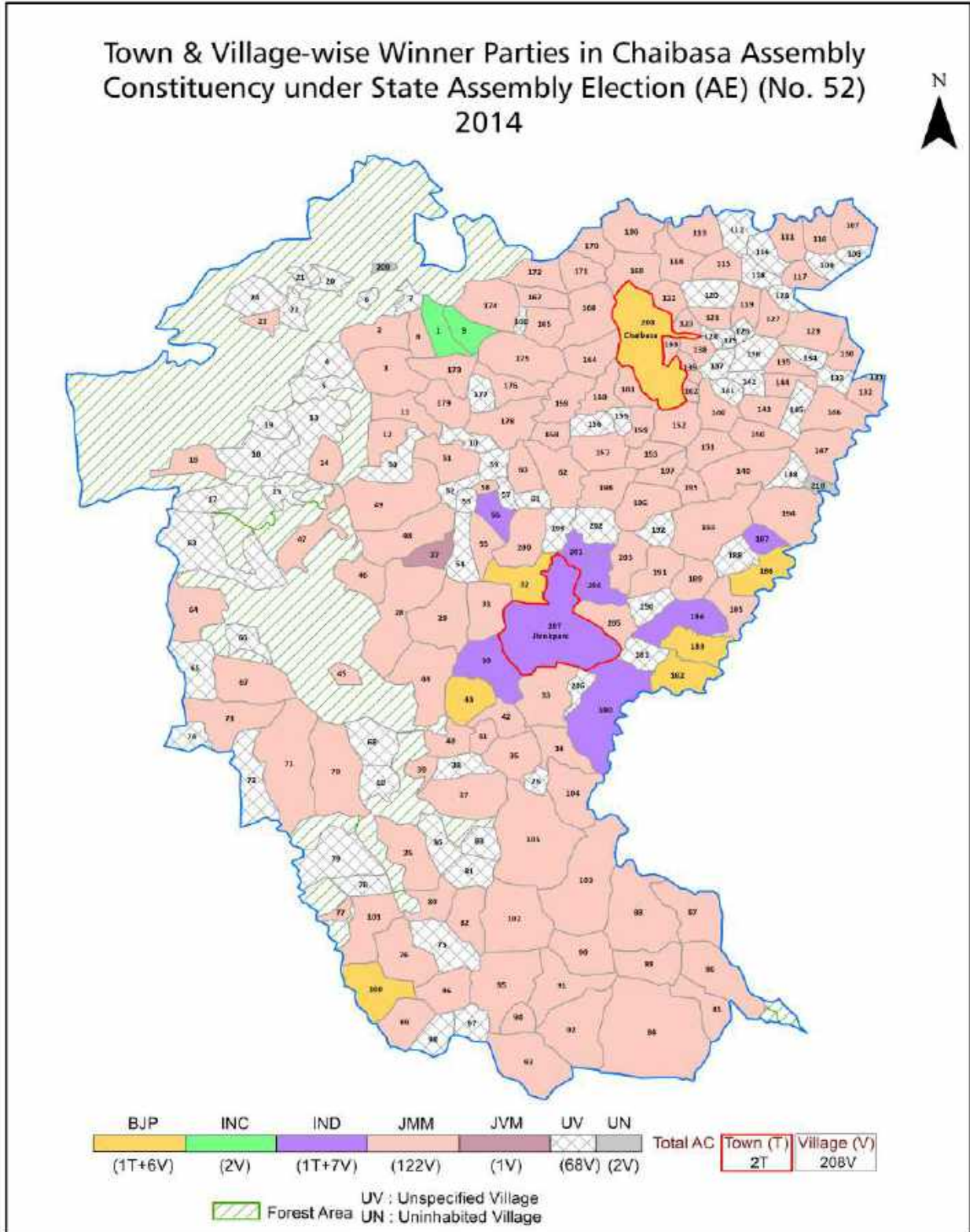
© Datanet India Pvt. Ltd.

All rights reserved. No part of this book may be reproduced, stored in a retrieval system or transmitted in any form or by any means, mechanical photocopying, photographing, scanning, recording or otherwise without the prior written permission of the publisher. Please refer to Disclaimer at page no. 210 for the use of this publication.

Printed in India

No.	Particulars	Page No.
	Introduction	
1	Assembly Constituency - (Vidhan sabha) at a Glance Features of Assembly as per Delimitation Commission of India (2008)	1-2
	Location and Political Maps	
2	Location Map Boundaries of Assembly Constituency - (Vidhan sabha) in District Boundaries of Assembly Constituency under Parliamentary Constituency - (Lok sabha) Town & Village-wise Winner Parties- 2024-PE, 2024-AE, 2019-PE, 2019-AE, 2014-PE, 2014-AE, 2009-PE and 2009-AE	3-11
	Administrative Setup (2011)	
3	District Sub-district Towns Villages Inhabited Villages Uninhabited Villages Village Panchayat Intermediate Panchayat	12-23
	Demographics (2011)	
4	Population Households Rural/Urban Population Towns and Villages by Population Size Sex Ratio (Total & 0-6 Years) Religious Population Social Population Literacy Rate	24-25
	Electoral Features	
5	Important Dates of Last Elections Held Electors by Gender Service Electors Voters Voters Turnout Polling Stations & Average Number of Electors per Polling Station Electors by Age Group Present Elected Representatives	26-31
	Historical Summary Election Results	
6	Vote Share of Major Parties Winning Margin (Number & Percentage) Polarity of Parties Summary Result of Assembly Segment of Parliamentary Elections 2024, 2019, 2014, 2009 and 2004 Summary Result of Assembly Elections 2024, 2019, 2014, 2009 and 2005	32-43
	Polling Station Level Election Results	
7	Name and Number of Polling Station 2024-PE, 2024-AE, 2019-PE, 2019-AE, 2014-PE, 2014-AE, 2009-PE and 2009-AE Polling Station-wise Electors, Voters & Voters Turnout 2024-PE, 2024-AE, 2019-PE, 2019-AE, 2014-PE, 2014-AE, 2009-PE and 2009-AE Polling Station wise Elections Results 2024-PE, 2024-AE, 2019-PE, 2019-AE, 2014-PE, 2014-AE, 2009-PE and 2009-AE	44-187
	Share of Assembly Constituency	
8	Share of Assembly Constituency - (Vidhan sabha) in State, District and Parliamentary Constituency - (Lok sabha)	188
	Socio-Economic Amenities (2011)	
9	Access to Administrative Units Agricultural, Manufacturing and Industrial Commodities Demographic Indicators Education Health & Manpower Drinking Water Supply Sanitation Entertainment and Recreations Infrastructure Power Food Allocation Distribution and Marketing of Agriculture Commodities Infrastructure Transport and Road Infrastructure Communication Banking and Financial Services Land Use Irrigation Source	190-204
10	Abbreviation & Sources	206-208
11	Disclaimer	210

Location & Political Map



Administrative Setup

List of Village Panchayat & Intermediate Panchayat (Block) Name - 2011

Village Name	Village Panchayat Name	Intermediate Panchayat Name
Aita	Baduri	Chaibasa
Ambdiha	Ambdiha	Hat Gamharia
Amita	Diliyamarcha	Chaibasa
Anchu	Diliyamarcha	Chaibasa
Anjedbera	Pandabir	Khuntpani
Asura	Asura	Jhinkpani
Baduri	Baduri	Chaibasa
Baihatsu	Siringsiya	Tonto
Baihatsu	Narsanda	Chaibasa
Baituibir	Tuibir	Chaibasa
Baljori	Nurda	Hat Gamharia
Bamebasa	Bamebasa	Tonto
Banaikera	Bamebasa	Tonto
Bandijari	Kenjra	Tonto
Bara Bankau	Pandabir	Khuntpani
Bara Jhikpani	Bara Jhikpani	Tonto
Bara Kuchia	Nimdih	Tonto
Bara Lagia	Bara Lagia	Khuntpani
Bara Mirgilindi	Jamdiha	Hat Gamharia
Bara Pungsia	Jamdiha	Hat Gamharia
Barajaipur	Kursi	Chaibasa
Baralisia	Barajhinkpani	Tonto
Baramaudi	Kursi	Chaibasa
Barandaya	Simiba	Chaibasa
Bardar	Sikhiya	Chaibasa
Barijal	Diliyamarcha	Chaibasa
Barkela	Barkela	Khuntpani
Barkundia	Tuibir	Chaibasa
Barobil	Tonto	Chaibasa

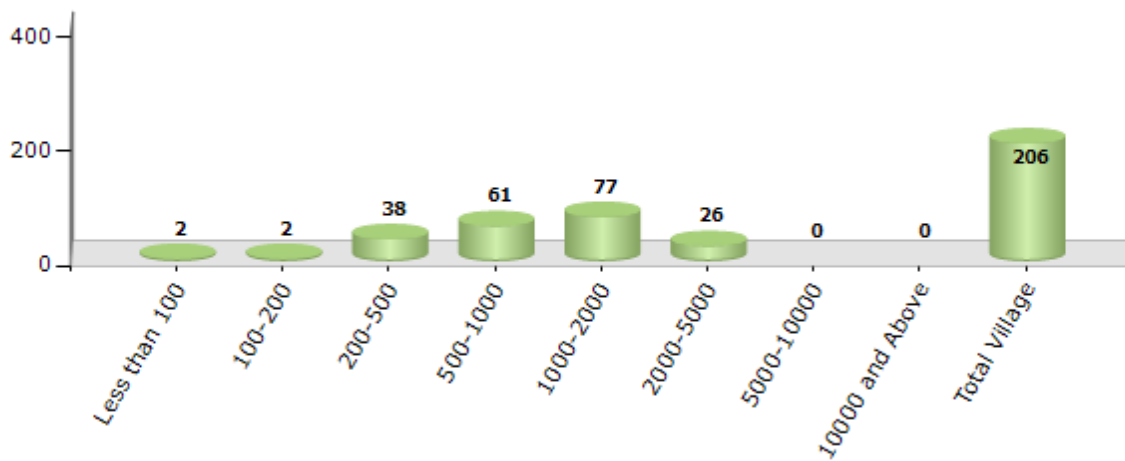
Contd....

Demographics

Number of Villages by Population Size - 2011

Less than 100	100-200	200-500	500-1000	1000-2000	2000-5000	5000-10000	10000 and Above	Total Village
2	2	38	61	77	26	0	0	206

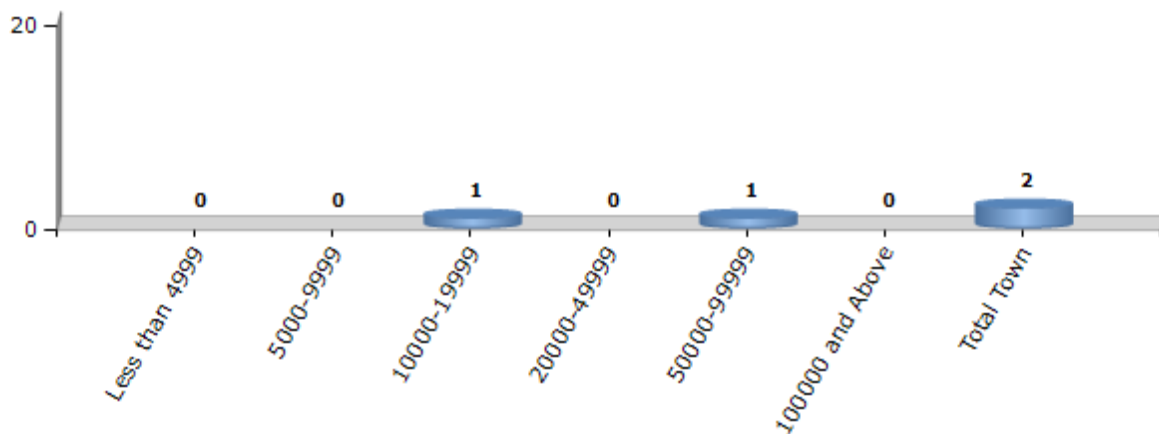
Number of Villages by Population Size - 2011



Number of Towns by Population Size - 2011

Less than 4999	5000-9999	10000-19999	20000-49999	50000-99999	100000 and Above	Total Town
0	0	1	0	1	0	2

Number of Towns by Population Size - 2011

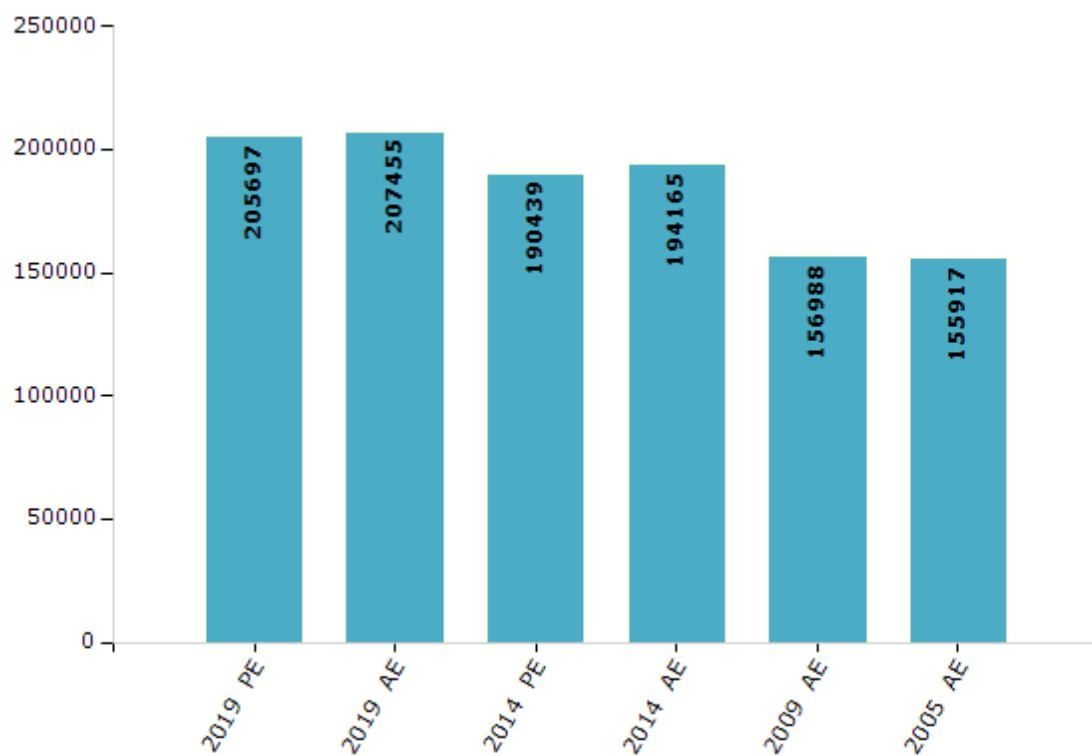


Electoral Features

Electors by Male & Female

Year	Male	Female	Others	Total	Year	Male	Female	Others	Total
2019 PE	101905	103791	1	205697	2009 PE	-	-	-	-
2019 AE	102618	104831	6	207455	2009 AE	79164	77824	-	156988
2014 PE	95511	94928	0	190439	2005 AE	78412	77505	-	155917
2014 AE	97112	97053	0	194165	2004 PE	-	-	-	-

Number of Electors



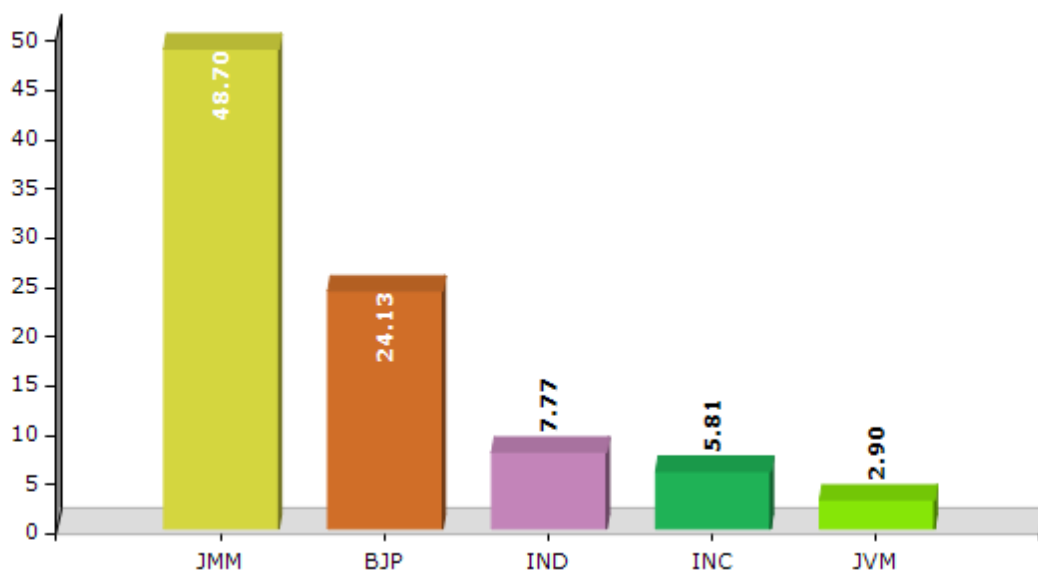
Note : AE : Assembly Election, PE : Assembly Segment of Parliamentary Election

Historical Summary Election Results

Summary Result of Assembly Election - 2014

Candidate Name	Party	Votes	Votes %
Deepak Birua	JMM	68801	48.7
Jyoti Bhramar Tubid	BJP	34086	24.13
John Miran Munda	IND	10983	7.77
Ashok Sundi	INC	8203	5.81
Geeta Sundi	JVM	4096	2.9
Sangi Banra	JBSP	2744	1.94
Sukhmati Barjo	BSP	2422	1.71
Subodh Sirka	IND	1963	1.39
Deepak Sundi	IND	1508	1.07
Mewalal Honhaga	APOI	1174	0.83
Pradhan Tiu	IND	1104	0.78
Jaypal Banra	BMUP	815	0.58
	NOTA	3367	2.38

Votes Percentage of Top Parties - 2014



Polling Station Level Election Results

Number and Name of Polling Stations (PS) (2019 AE)

Number of Polling Stations	Name of Polling Stations	Number of Polling Stations	Name of Polling Stations
1	Utkramit Madhya Vidyalaya Ghaghri	22	Prathmik Vidyalaya Baramaudi
2	Prathmik Vidyalaya Tonto (North Part)	23	Utkramit Madhya Vidyalaya Chhota Jaypur
3	Prathmik Vidyalaya Tonto (South Part)	24	Madhya Vidyalaya Donkasai (Room No. 1)
4	Utkramit Madhya Vidyalaya Barbil	25	Madhya Vidyalaya Donkasai(Room No. 2)
5	Prathmik Vidyalaya Baihatu	26	Prathmik Vidyalaya Kursi
6	Utkramit Ucha Vidyalaya Narsanda Purana Bhawan	27	Utkramit Madhya Vidyalaya Kankusi
7	Utkramit Ucha Vidyalaya Narsanda Madhya Bhawan	28	Utkramit Madhya Vidyalaya Harila (Room No. 1)
8	Utkramit Ucha Vidyalaya Narsanda (East Bhawan of South Part)	29	Utkramit Madhya Vidyalaya Harila (Room No. 2)
9	Utkramit Ucha Vidyalaya Narsanda (East Bhawan of North Part)	30	Prathmik Vidyalaya Gundipua
10	Rajkiakrit Madhya Vidyalaya Sindri (Room No1)	31	Utkramit Madhya Vidyalaya Singhpokhria
11	Rajkiakrit Madhya Vidyalaya Sindri (Room No. 2)	32	Prathmik Vidyalaya Gitilpi
12	Rajkiakrit Madhya Vidyalaya Sindri (Room No. 3)	33	Prathmik Vidyalaya Kidigot
13	Prathmik Vidyalaya Kanki	34	Prathmik Vidyalaya Tuibir
14	Utkramit Ucha Vidyalaya Nakahasa	35	Utkramit Prathmik Vidyalaya Baituibir
15	Prathmik Vidyalaya Lokehatu	36	Prathmik Vidyalaya Pampara
16	Prathmik Vidyalaya Ulihatu	37	Prathmik Vidyalaya Kuidbusu
17	Utkramit Madhya Vidyalaya Baduri	38	Madhya Vidyalaya Barkundia
18	Prathmik Vidyalaya Domardiha	39	Utkramit Prathmik Vidyalaya Tergo
19	Prathmik Vidyalaya Gunabasa	40	Prathmik Vidyalaya Kundubera
20	Utkramit Madhya Vidyalaya Tekasai	41	Utkramit Madhya Vidyalaya Nimdih
21	Purb Sanchalit Prathmik Vidyalaya Tirilbuta	42	Utkramit Madhya Vidyalaya Tekrahatu

Contd....

Polling Station Level Election Results

Polling Station-wise Votes Secured by Overall Top Five Parties in Chaibasa Assembly in Assembly Election (AE) under Singhbhum Parliamentary Constituency in Jharkhand (2019)

Number of Polling Station	Winner - Deepak Birua (JMM)	Runner-up - J. B. Tubid (BJP)	3rd - Chandmani Balmuchu (JVM)	4th - Pushpa Sinku (IND)	5th - Turam Biruly (AITC)	NOTA	Other	Total Votes Secured
36	364	164	13	11	3	9	38	602
37	221	102	14	5	3	6	25	376
38	458	114	27	12	4	13	74	702
39	127	15	3	2	4	2	8	161
40	552	96	20	26	5	5	47	751
41	217	124	24	30	6	10	39	450
42	299	110	48	27	86	21	50	641
43	171	3	6	1	1	0	4	186
44	366	176	16	28	47	6	91	730
45	534	88	22	41	16	9	52	762
46	332	220	18	8	5	7	36	626
47	352	80	4	3	9	5	17	470
48	224	58	10	8	5	1	21	327
49	296	125	6	4	4	8	30	473
50	346	77	11	24	5	3	14	480
51	227	19	1	5	4	2	12	270
52	314	105	5	6	4	2	23	459
53	300	50	2	3	0	4	18	377
54	402	153	10	5	3	10	17	600
55	209	139	8	2	3	2	10	373
56	296	114	21	8	4	15	35	493
57	165	67	4	6	0	3	13	258
58	452	163	7	15	10	7	30	684
59	171	126	28	6	6	9	48	394
60	280	31	3	8	1	5	33	361
61	241	82	2	4	3	7	9	348
62	437	184	22	10	7	13	35	708
63	589	77	16	7	7	3	35	734
64	461	153	12	5	3	5	38	677
65	112	97	10	2	5	0	19	245
66	392	196	17	15	6	7	30	663
67	545	56	16	8	2	5	31	663
68	346	248	15	6	11	12	22	660
69	217	126	13	0	11	2	23	392
70	312	116	48	8	3	22	32	541

Contd....

Polling Station Level Election Results

Winner, Runner-up and 3rd Party Position & Winning Margin According to Polling Stations in Chaibasa Assembly in Assembly Election (AE) under Singhbhum Parliamentary Constituency in Jharkhand (2019)

Polling Station Number	Winner Party	Winner Votes (%)	Runner-up Party	Runner-up Votes (%)	Winning Margin Votes (%)	Third Party	Third Party Votes (%)	Other Votes (%)
71	JMM	515 (65.27)	BJP	180 (22.81)	335 (42.46)	BSP	16 (2.03)	78 (9.89)
72	JMM	201 (49.02)	BJP	150 (36.59)	51 (12.43)	JVM	20 (4.88)	39 (9.51)
73	JMM	253 (58.56)	BJP	130 (30.09)	123 (28.47)	JVM	17 (3.94)	32 (7.41)
74	JMM	456 (67.26)	BJP	142 (20.94)	314 (46.32)	AITC	18 (2.65)	62 (9.14)
75	JMM	212 (44.92)	BJP	109 (23.09)	103 (21.83)	IND (PS)	53 (11.23)	98 (20.76)
76	JMM	341 (72.25)	BJP	40 (8.47)	301 (63.78)	JVM	20 (4.24)	71 (15.04)
77	JMM	381 (57.99)	BJP	120 (18.26)	261 (39.73)	IND (PS)	42 (6.39)	114 (17.35)
78	JMM	158 (38.92)	BJP	90 (22.17)	68 (16.75)	IND (PS)	78 (19.21)	80 (19.7)
79	JMM	177 (66.54)	BJP	75 (28.2)	102 (38.34)	JVM	3 (1.13)	11 (4.14)
80	JMM	375 (65.45)	BJP	127 (22.16)	248 (43.29)	JVM	14 (2.44)	57 (9.95)
81	JMM	307 (50.16)	IND (MSS)	82 (13.4)	225 (36.76)	BJP	80 (13.07)	143 (23.37)
82	JMM	218 (43.34)	JVM	115 (22.86)	103 (20.48)	BJP	90 (17.89)	80 (15.9)
83	JMM	428 (78.68)	BJP	43 (7.9)	385 (70.78)	JVM	24 (4.41)	49 (9.01)
84	JMM	20 (48.78)	BJP	13 (31.71)	7 (17.07)	JVM	3 (7.32)	5 (12.2)
85	JMM	178 (69.53)	BJP	57 (22.27)	121 (47.26)	IND (PS)	5 (1.95)	16 (6.25)
86	BJP	252 (42)	JMM	236 (39.33)	16 (2.67)	JVM	52 (8.67)	60 (10)
87	JMM	204 (42.68)	BJP	176 (36.82)	28 (5.86)	JVM	25 (5.23)	73 (15.27)
88	JMM	390 (64.36)	BJP	81 (13.37)	309 (50.99)	JVM	29 (4.79)	106 (17.49)
89	JMM	312 (70.27)	BJP	60 (13.51)	252 (56.76)	JVM	30 (6.76)	42 (9.46)
90	BJP	393 (53.25)	JMM	271 (36.72)	122 (16.53)	IND (PS)	13 (1.76)	61 (8.27)
91	BJP	291 (68.79)	JMM	103 (24.35)	188 (44.44)	JVM	5 (1.18)	24 (5.67)
92	BJP	291 (72.93)	JMM	53 (13.28)	238 (59.65)	JD(U)	16 (4.01)	39 (9.77)
93	BJP	345 (79.86)	JMM	65 (15.05)	280 (64.81)	JD(U)	9 (2.08)	13 (3.01)
94	BJP	445 (71.2)	JMM	135 (21.6)	310 (49.6)	JVM	10 (1.6)	35 (5.6)
95	BJP	399 (66.06)	JMM	170 (28.15)	229 (37.91)	JVM	11 (1.82)	24 (3.97)
96	BJP	500 (77.64)	JMM	115 (17.86)	385 (59.78)	JVM	9 (1.4)	20 (3.11)
97	BJP	330 (74.49)	JMM	75 (16.93)	255 (57.56)	JVM	14 (3.16)	24 (5.42)
98	BJP	351 (74.68)	JMM	75 (15.96)	276 (58.72)	JVM	16 (3.4)	28 (5.96)
99	BJP	283 (73.51)	JMM	74 (19.22)	209 (54.29)	JD(U)	15 (3.9)	13 (3.38)
100	BJP	272 (73.51)	JMM	77 (20.81)	195 (52.7)	JVM	5 (1.35)	16 (4.32)
101	BJP	227 (60.37)	JMM	122 (32.45)	105 (27.92)	JVM	9 (2.39)	18 (4.79)
102	BJP	215 (49.43)	JMM	182 (41.84)	33 (7.59)	JD(U)	14 (3.22)	24 (5.52)
103	BJP	459 (73.44)	JMM	117 (18.72)	342 (54.72)	JVM	14 (2.24)	35 (5.6)
104	BJP	375 (73.1)	JMM	103 (20.08)	272 (53.02)	JVM	11 (2.14)	24 (4.68)
105	BJP	532 (77.1)	JMM	126 (18.26)	406 (58.84)	AITC	6 (0.87)	26 (3.77)

Contd....

Socio-Economic Amenities - Rural

Access to Education Facilities

Particulars	Number of Villages (% of Population)				
	Available	Not Available	If Not Available (Distance of Nearest Facility)		
			A	B	C
Govt. Primary School	195 (97)	11 (3)	9 (3)	2 (1)	0 (0)
Private Primary School	13 (8)	193 (92)	0 (0)	0 (0)	0 (0)
Govt. Middle School	84 (50)	122 (50)	81 (36)	27 (8)	14 (5)
Private Middle School	1 (1)	205 (99)	0 (0)	0 (0)	0 (0)
Govt. Secondary School	13 (9)	193 (91)	68 (38)	87 (38)	38 (15)
Private Secondary School	0 (0)	206 (100)	0 (0)	0 (0)	0 (0)
Govt. Senior Secondary School	3 (2)	203 (98)	31 (17)	69 (36)	103 (44)
Private Senior Secondary School	0 (0)	206 (100)	0 (0)	0 (0)	0 (0)
Govt. Arts and Science Degree College	0 (0)	206 (100)	17 (11)	54 (25)	135 (64)
Private Arts and Science Degree College	0 (0)	206 (100)	0 (0)	0 (0)	0 (0)
Govt. Engineering College	0 (0)	206 (100)	5 (3)	21 (9)	180 (88)
Private Engineering College	0 (0)	206 (100)	0 (0)	0 (0)	0 (0)
Govt. Medicine College	0 (0)	206 (100)	6 (3)	11 (5)	189 (92)
Private Medicine College	0 (0)	206 (100)	0 (0)	0 (0)	0 (0)
Govt. Management Institute	0 (0)	206 (100)	4 (2)	11 (7)	191 (91)
Private Management Institute	0 (0)	206 (100)	0 (0)	0 (0)	0 (0)
Govt. Polytechnic	0 (0)	206 (100)	5 (2)	14 (8)	187 (90)
Private Polytechnic	0 (0)	206 (100)	0 (0)	0 (0)	0 (0)
Govt. Vocational Training School/ITI	2 (2)	204 (98)	19 (12)	42 (20)	143 (66)
Private Vocational Training School/ITI	0 (0)	206 (100)	0 (0)	0 (0)	0 (0)
Govt. Non Formal Training Centre	1 (0)	205 (100)	8 (7)	31 (16)	166 (77)
Private Non Formal Training Centre	0 (0)	206 (100)	0 (0)	0 (0)	0 (0)
Govt. School For Disabled	0 (0)	206 (100)	10 (5)	14 (7)	182 (88)
Private School For Disabled	0 (0)	206 (100)	0 (0)	0 (0)	0 (0)
Government Others	0 (0)	206 (100)	10 (5)	15 (7)	181 (88)
Private Others	0 (0)	206 (100)	0 (0)	0 (0)	0 (0)

Note : Distance A : Less than 5 km; B : Between 5-10 km; C : 10+ km.; Source : Data Analysis is based on 2011 Census.

DISCLAIMER

The Terms of Use and Disclaimer of Datanet India Private Limited (hereinafter referred to as "Datanet") for use of this analysis report of **Chaibasa Assembly Constituency (Chaibasa Vidhan Sabha)** :-

1. **Assembly Factbook™** is a Registered Trade Mark owned by Datanet.
2. All the maps are sketched and graphical representation only and have not been drawn to the scale and also not to represent the actual geographical area or boundary of the unit.
3. The data for the aforesaid analysis is based on authentic sources and has been culled from the various publications of Census, CSO and NSSO for district and block level data, various central and state government departments, Central & State Elections Commissions and the concerned Returning Officers' releases, Electoral Rolls, Election results and allied publications, internal assessment, surveys, estimates and analysis. Therefore, certain adjustment of data at micro level may have been done to arrive closer to the macro data.
4. Data have been provided on an "As Is" and "As AVAILABLE" basis
5. The colours shown in the maps or diagram and charts of a particular party, alliance or AC are indicative and do not represent them.
6. This publication which includes maps, sheets, graphs and data would be the property under copyright of Datanet only. The user may use these for its internal study, analysis and research purposes. It's public display, re-selling or any commercial uses by the user are not allowed.
7. Datanet has taken due care and caution in compilation and processing of data and allied information, but does not guarantee the accuracy, adequacy or completeness of any information/analysis and will be not responsible for any errors or omissions or for the results obtained from the use of such information/analysis.
8. All the contents for the publication have been culled from various authentic sources and Datanet reasonably believes such sources to be reliable, but does not make any representations, express or implied as to the accuracy or fitness of use of such information. The information or contents of the information/analysis do not constitute advice and should not be relied upon in making (or refraining from making) any decision. Any reliance placed upon the information provided by Datanet is the sole responsibility and strictly at the user's risk.
9. In no event will Datanet be liable for any damages (including, without limitation, damages for loss of business projects, or loss of profits) arising in contract, tort or otherwise from the use of or inability to use any of its contents, or from any action taken (or refrained from being taken) as a result of using the analysis or any of its contents. Datanet its directors, owners, editors, officials, employees, distributor and agents or any associate will not be liable for any errors in the information contained or any consequences arising from the use of the contents of the provided information/analysis.
10. If any provision of these terms and conditions is held invalid or illegal or unenforceable for any reason by any court of competent jurisdiction, such provision shall be severed and the remainder of provisions of the terms and conditions shall continue in full force and effect as if the Term of Use had been executed with the invalid, illegal or unenforceable provision eliminated.
11. If there are any discrepancies in the information provided, please bring it to attention of Datanet for suitable rectification measures.

**Buy Online This Complete Book At
Datanet India eBooks Store**

www.indiastatpublications.com

or go directly at

[http://www.indiastatpublications.com/
Assembly_factbook/Jharkhand/Singhbhum/ Chaibasa](http://www.indiastatpublications.com/Assembly_factbook/Jharkhand/Singhbhum/Chaibasa)

 **india**stat**elections**

ISBN : 978-93-5301-959-4



9 789353 019594