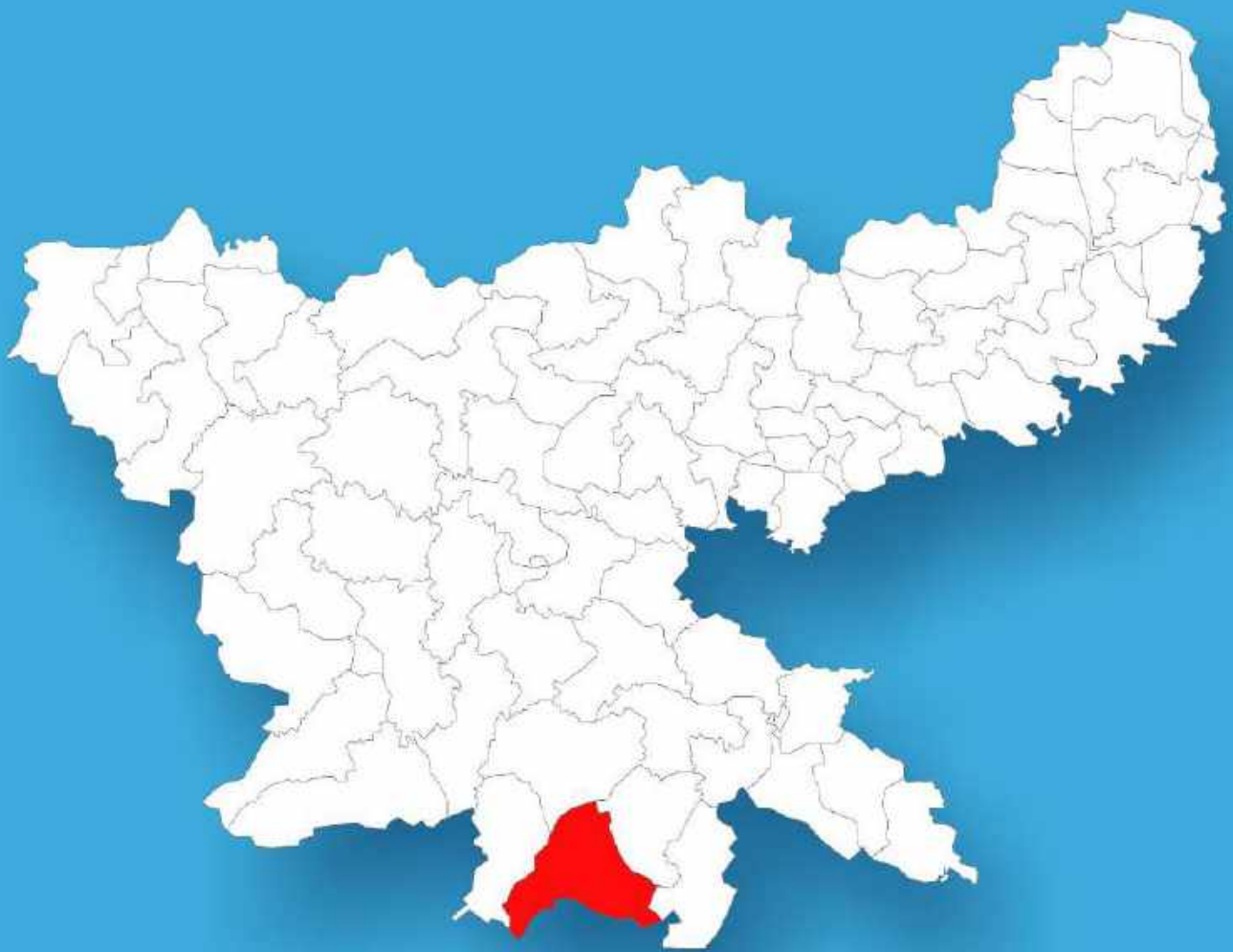




Jharkhand

Assembly Factbook™

Jaganathpur Assembly Constituency



Key Electoral Data of Jaganathpur
Assembly Constituency (Vidhan Sabha)

Jharkhand
Assembly FactbookTM
Jaganathpur Assembly Constituency



Jaganathpur Vidhan Sabha

Editor & Director

Dr. R.K. Thukral

Research Editor

Dr. Shafeeq Rahman

Compiled, Researched and Published by Datanet India Pvt. Ltd.

D-100, 1st Floor,

Okhla Industrial Area, Phase-I,
New Delhi- 110020.

Ph.: 91-11- 43580781-84

Email : support@indiastatpublications.com

Website : www.indiastatelections.com

Online Book Store :

www.indiastatpublications.com

Report No. : AFB/JH-54-0125

ISBN : 978-93-5301-981-5

First Edition : January, 2018

Eighth Updated Edition : January, 2025

Price : Rs. 11500/-

US\$ 310

© **Datanet India Pvt. Ltd.**

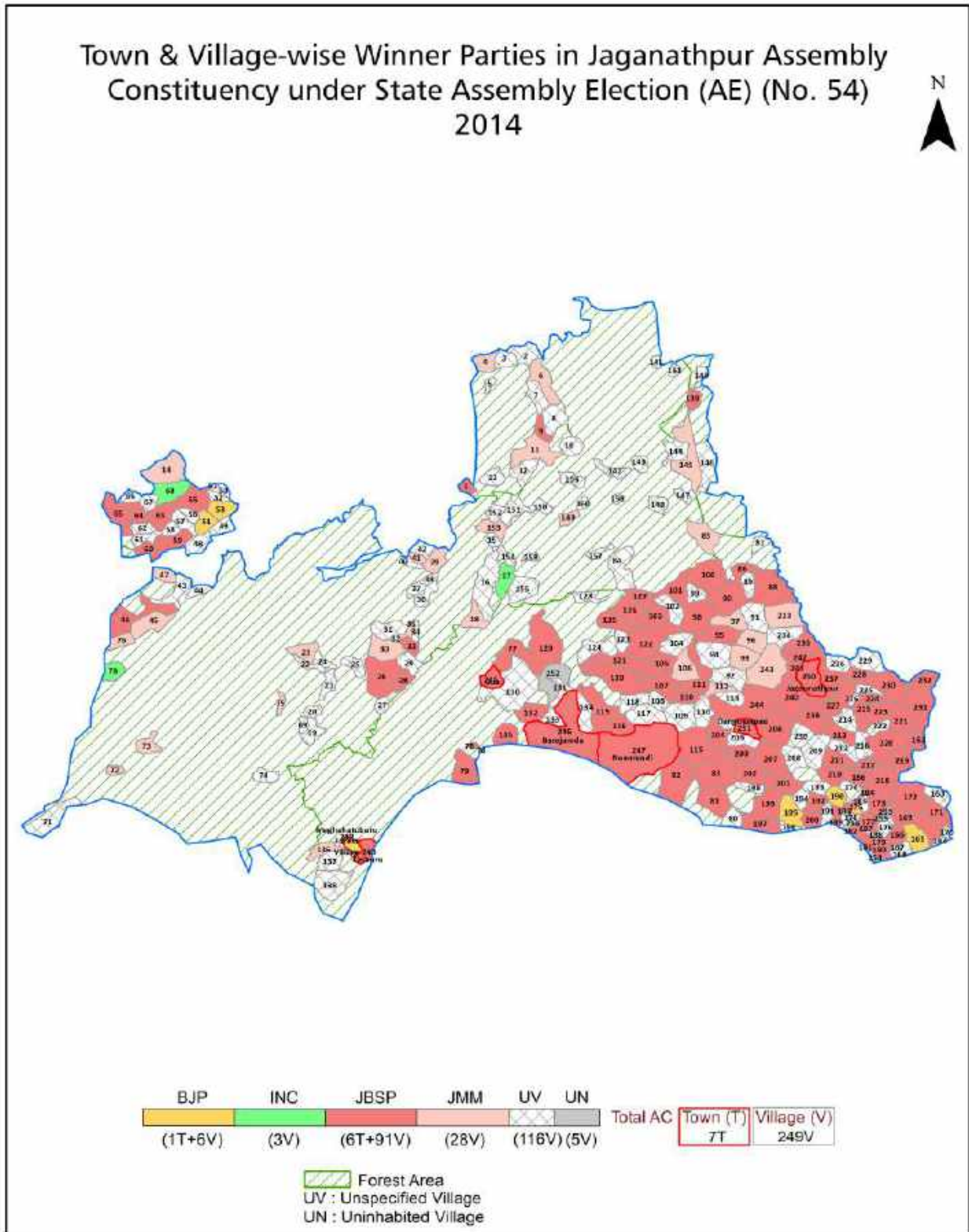
All rights reserved. No part of this book may be reproduced, stored in a retrieval system or transmitted in any form or by any means, mechanical photocopying, photographing, scanning, recording or otherwise without the prior written permission of the publisher. Please refer to Disclaimer at page no. 195 for the use of this publication.

Printed in India

Contents

No.	Particulars	Page No.
	Introduction	
1	Assembly Constituency - (Vidhan sabha) at a Glance Features of Assembly as per Delimitation Commission of India (2008)	1-2
	Location and Political Maps	
2	Location Map Boundaries of Assembly Constituency - (Vidhan sabha) in District Boundaries of Assembly Constituency under Parliamentary Constituency - (Lok sabha) Town & Village-wise Winner Parties- 2024-PE, 2024-AE, 2019-PE, 2019-AE, 2014-PE, 2014-AE, 2009-PE and 2009-AE	3-11
	Administrative Setup (2011)	
3	District Sub-district Towns Villages Inhabited Villages Uninhabited Villages Village Panchayat Intermediate Panchayat	12-24
	Demographics (2011)	
4	Population Households Rural/Urban Population Towns and Villages by Population Size Sex Ratio (Total & 0-6 Years) Religious Population Social Population Literacy Rate	25-26
	Electoral Features	
5	Important Dates of Last Elections Held Electors by Gender Service Electors Voters Voters Turnout Polling Stations & Average Number of Electors per Polling Station Electors by Age Group Present Elected Representatives	27-32
	Historical Summary Election Results	
6	Vote Share of Major Parties Winning Margin (Number & Percentage) Polarity of Parties Summary Result of Assembly Segment of Parliamentary Elections 2024, 2019, 2014, 2009 and 2004 Summary Result of Assembly Elections 2024, 2019, 2014, 2009 and 2005	33-44
	Polling Station Level Election Results	
7	Name and Number of Polling Station 2024-PE, 2024-AE, 2019-PE, 2019-AE, 2014-PE, 2014-AE, 2009-PE and 2009-AE Polling Station-wise Electors, Voters & Voters Turnout 2024-PE, 2024-AE, 2019-PE, 2019-AE, 2014-PE, 2014-AE, 2009-PE and 2009-AE Polling Station wise Elections Results 2024-PE, 2024-AE, 2019-PE, 2019-AE, 2014-PE, 2014-AE, 2009-PE and 2009-AE	45-172
	Share of Assembly Constituency	
8	Share of Assembly Constituency - (Vidhan sabha) in State, District and Parliamentary Constituency - (Lok sabha)	173
	Socio-Economic Amenities (2011)	
9	Access to Administrative Units Agricultural, Manufacturing and Industrial Commodities Demographic Indicators Education Health & Manpower Drinking Water Supply Sanitation Entertainment and Recreations Infrastructure Power Food Allocation Distribution and Marketing of Agriculture Commodities Infrastructure Transport and Road Infrastructure Communication Banking and Financial Services Land Use Irrigation Source	175-189
10	Abbreviation & Sources	191-193
11	Disclaimer	195

Location & Political Map



Administrative Setup

List of Village Panchayat & Intermediate Panchayat (Block) Name - 2011

Village Name	Village Panchayat Name	Intermediate Panchayat Name
Abhaipur	Boranga	Manoharpur
Agrowan	Bundu	Tonto
Aikuti	Jetea	Noamundi
Akahata	-	Tonto
Amjora	Chotamahuladiha	Jagannathpur
Arahasa	Arahasa	Goikera
Babaria	Jetea	Noamundi
Bahada	Chhota Nagra	Manoharpur
Bahda	Dudhbila	Noamundi
Baihata	Arahasa	Goikera
Baihata	Chhota Nagra	Manoharpur
Baliadih	Mongara	Jagannathpur
Baliba	Digha Raidih	Manoharpur
Bambaisai	Barapaseya	Noamundi
Banaikela	Siyaljora	Jagannathpur
Bandabera	Tonto	Tonto
Bankati	Pata Jaint	Jagannathpur
Banki	Bundu	Tonto
Banskata	Jaintgarh	Jagannathpur
Bara Baljori	Diriburu	Noamundi
Bara Muhuldiha	Maluka	Jagannathpur
Bara Nanda	Barananda	Jagannathpur
Baraiburu	Purbi Kiriburu	Noamundi
Barapaseya	Barapaseya	Noamundi
Barham Pur	Siyaljoha	Jagannathpur
Barla	Mundai	Jagannathpur
Basira	Kasira	Jagannathpur
Basudebpur	Mundai	Jagannathpur
Belposi	Pata Jaint	Jagannathpur

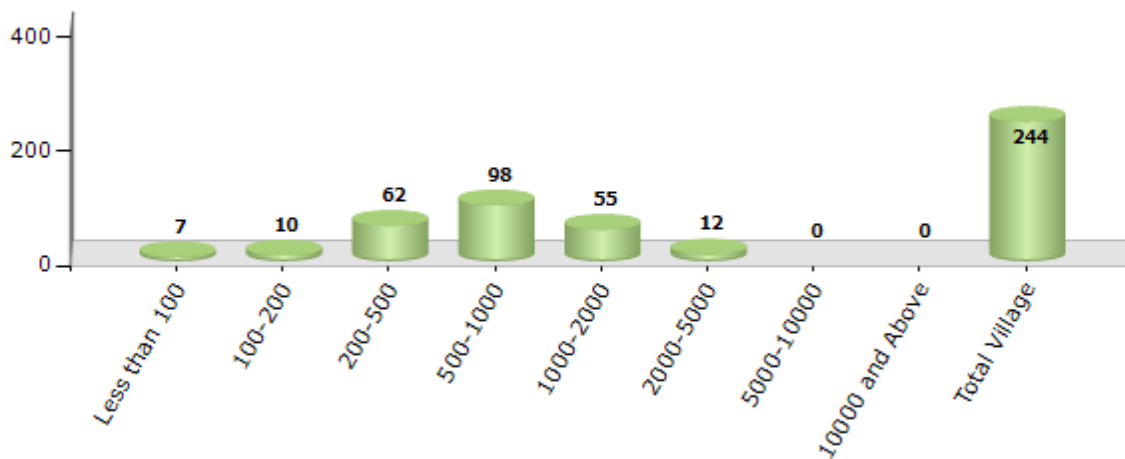
Contd....

Demographics

Number of Villages by Population Size - 2011

Less than 100	100-200	200-500	500-1000	1000-2000	2000-5000	5000-10000	10000 and Above	Total Village
7	10	62	98	55	12	0	0	244

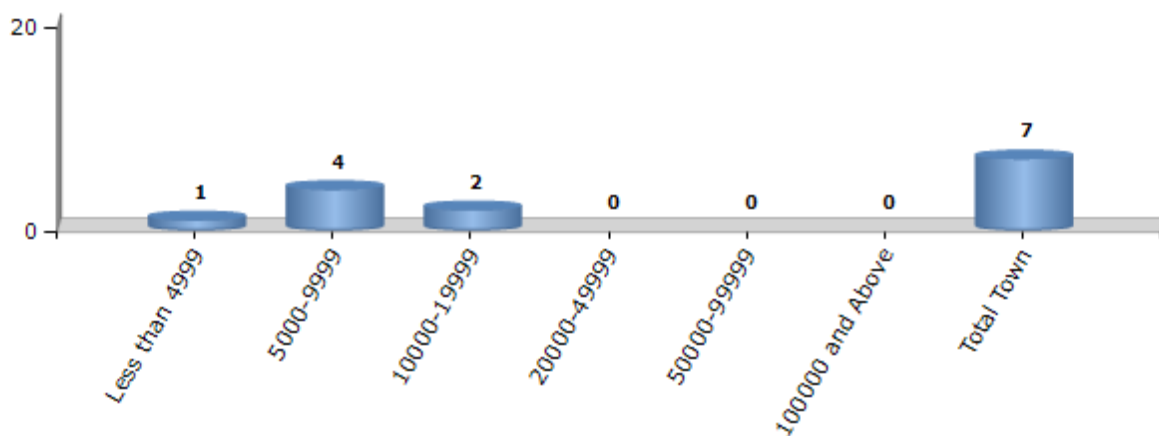
Number of Villages by Population Size - 2011



Number of Towns by Population Size - 2011

Less than 4999	5000-9999	10000-19999	20000-49999	50000-99999	100000 and Above	Total Town
1	4	2	0	0	0	7

Number of Towns by Population Size - 2011

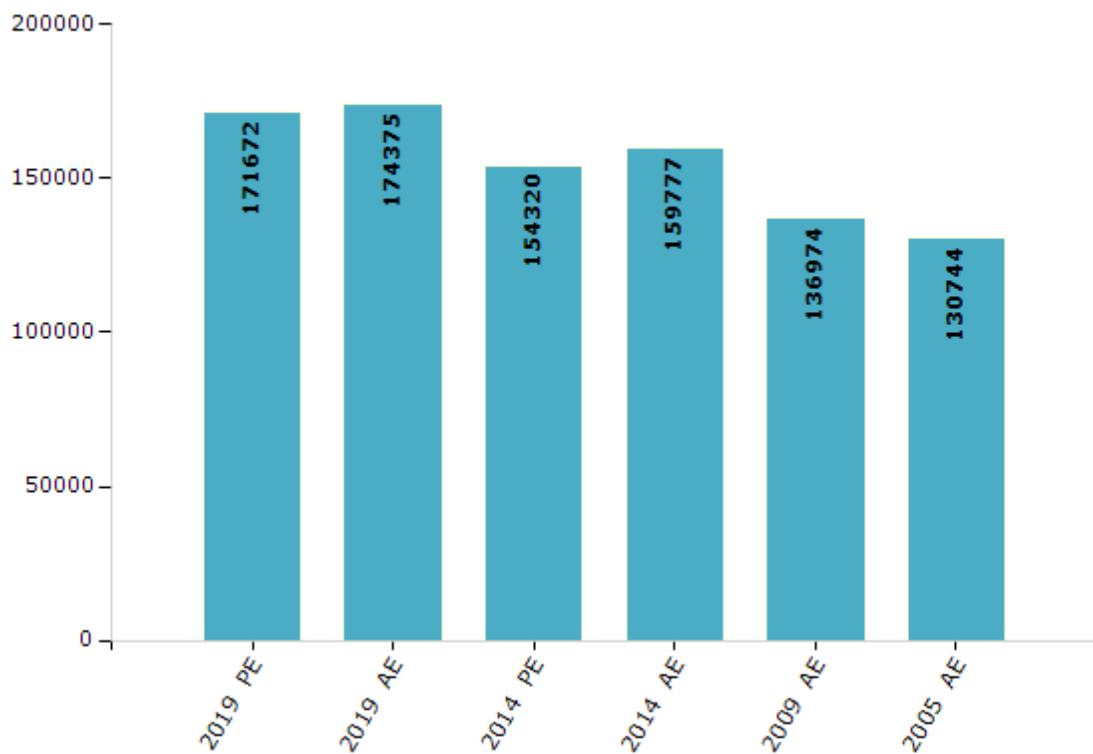


Electoral Features

Electors by Male & Female

Year	Male	Female	Others	Total	Year	Male	Female	Others	Total
2019 PE	86268	85404	0	171672	2009 PE	-	-	-	-
2019 AE	87459	86916	0	174375	2009 AE	70117	66857	-	136974
2014 PE	78744	75575	1	154320	2005 AE	66004	64740	-	130744
2014 AE	81351	78425	1	159777	2004 PE	-	-	-	-

Number of Electors



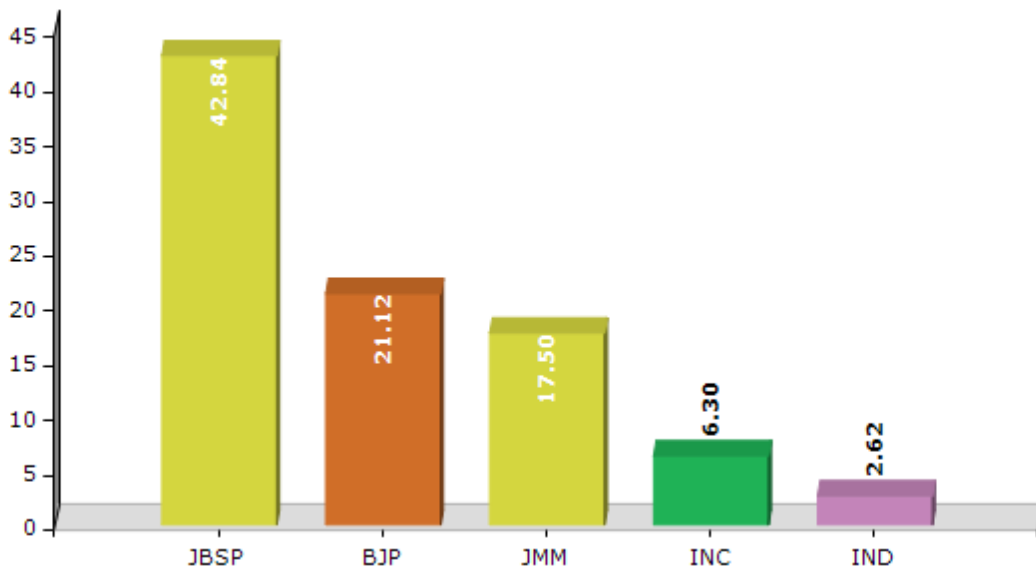
Note : AE : Assembly Election, PE : Assembly Segment of Parliamentary Election

Historical Summary Election Results

Summary Result of Assembly Election - 2014

Candidate Name	Party	Votes	Votes %
Geeta Kora	JBSP	48546	42.84
Mangal Singh Suren	BJP	23935	21.12
Mangal Singh Bobonga	JMM	19834	17.5
Sunny Sinku	INC	7142	6.3
Mansingh Tiriya	IND	2968	2.62
Prashant Kumar Champiya	JVM	2420	2.14
Roya Purti	IND	1981	1.75
Shivnath Chattar	BSP	1573	1.39
	NOTA	4919	4.34

Votes Percentage of Top Parties - 2014



Polling Station Level Election Results

Number and Name of Polling Stations (PS) (2019 AE)

Number of Polling Stations	Name of Polling Stations	Number of Polling Stations	Name of Polling Stations
1	Prathamik Vidyalaya Sadpotka	22	Madhya Vidyalaya Tholkobad
2	Utkramit Madhya Vidyalaya Kolpotka	23	Utkramit Madhya Vidyalaya Kumdih
3	Utkramit Madhya Vidyalaya Jharbera	24	Utkramit Madhya Vidyalaya Marangponga
4	Utkramit Madhya Vidyalaya Sirka	25	Prathamik Vidyalaya Sonapi
5	Utkramit Madhya Vidyalaya Abhaypur (East Part)	26	Prathamik Vidyalaya Tentlightat
6	Utkramit Madhya Vidyalaya Abhaypur (West Part)	27	Utkramit Uchcha Vidyalaya Chhotanagra
7	Utkramit Uchcha Vidyalaya Rengalbera	28	Prathamik Vidyalaya Jamkundia
8	Utkramit Uchcha Vidyalaya Dhanapali	29	Prathamik Vidyalaya Rajabera (Jojogutu)
9	Utkramit Madhya Vidyalaya Urkiya (West Part)	30	Utkramit Prathamik Vidyalaya Selai
10	Utkramit Madhya Vidyalaya Urkiya (North Part)	31	Utkramit Madhya Vidyalaya Duiya
11	Utkramit Uchcha Vidyalaya Baranga (East Part)	32	Utkramit Madhya Vidyalaya Ghatkuri (East Part)
12	Utkramit Uchcha Vidyalaya Baranga (North Part)	33	Utkramit Madhya Vidyalaya Ghatkuri (West Part)
13	Utkramit Uchcha Vidyalaya Baranga (West Part)	34	Prathamik Vidyalaya Kashiyapecha
14	Basic School Jaraikella	35	Utkramit Madhya Vidyalaya Karampada (East Part)
15	Prathamik Vidyalaya Makranda	36	Utkramit Madhya Vidyalaya Karampada (West Part)
16	Utkramit Uchcha Vidyalaya Rera	37	Kendriya Vidyalaya Meghahatuburu (East Part)
17	Utkramit Madhya Vidyalaya Sagjori (East Part)	38	Kendriya Vidyalaya Meghahatuburu (Middle Part)
18	Utkramit Madhya Vidyalaya Sagjori (West Part)	39	Kendriya Vidyalaya Meghahatuburu (South Part)
19	Utkramit Madhya Vidyalaya Digha	40	Kendriya Vidyalaya Meghahatuburu (North Part)
20	Utkramit Madhya Vidyalaya Tirilposi	41	Project Kendriya Vidyalaya Kiriburu (North Part)
21	Utkramit Madhya Vidyalaya Vitkilsoy	42	Project Kendriya Vidyalaya Kiriburu (South Part)

Contd....

Polling Station Level Election Results

Polling Station-wise Votes Secured by Overall Top Five Parties in Jaganathpur Assembly in Assembly Election (AE) under Singhbhum Parliamentary Constituency in Jharkhand (2019)

Number of Polling Station	Winner - Sona Ram Sinku (INC)	Runner-up - Mangal Singh Bobonga (JVM)	3rd - Sudhir Kumar Sundi (BJP)	4th - Mangal Singh Suren (AJSUP)	5th - Laxmi Suren (IND)	NOTA	Other	Total Votes Secured
36	24	88	54	23	18	24	45	276
37	134	76	88	32	3	6	34	373
38	123	69	49	39	9	15	37	341
39	148	74	96	33	9	9	41	410
40	95	60	67	19	2	6	18	267
41	32	54	35	23	5	2	19	170
42	78	74	87	38	4	7	25	313
43	50	66	40	34	0	4	11	205
44	94	57	106	18	4	9	30	318
45	86	55	91	26	2	7	18	285
46	112	72	146	54	14	10	35	443
47	104	114	176	47	2	15	37	495
48	217	98	162	26	16	10	83	612
49	160	99	156	24	20	17	65	541
50	90	11	212	5	6	6	38	368
51	269	17	99	8	21	23	59	496
52	237	63	124	37	9	4	92	566
53	86	114	39	32	13	10	98	392
54	41	49	35	5	1	2	14	147
55	88	79	83	19	4	11	73	357
56	207	100	82	31	12	28	215	675
57	329	154	34	71	6	11	131	736
58	137	108	113	90	30	5	45	528
59	196	130	92	40	36	9	104	607
60	226	66	145	37	3	9	78	564
61	321	64	76	83	34	11	79	668
62	165	97	96	45	19	9	40	471
63	121	120	166	48	29	17	26	527
64	100	167	167	38	73	23	55	623
65	85	129	180	56	50	12	30	542
66	79	71	16	38	114	27	109	454
67	173	195	157	80	71	25	63	764
68	125	135	9	11	12	46	96	434
69	171	146	102	40	20	29	88	596
70	113	55	29	12	72	11	42	334

Contd....

Polling Station Level Election Results

Winner, Runner-up and 3rd Party Position & Winning Margin According to Polling Stations in Jaganathpur Assembly in Assembly Election (AE) under Singhbhum Parliamentary Constituency in Jharkhand (2019)

Polling Station Number	Winner Party	Winner Votes (%)	Runner-up Party	Runner-up Votes (%)	Winning Margin Votes (%)	Third Party	Third Party Votes (%)	Other Votes (%)
71	INC	119 (22.12)	IND (LS)	91 (16.91)	28 (5.21)	JVM	77 (14.31)	251 (46.65)
72	INC	162 (50.31)	JVM	39 (12.11)	123 (38.2)	BJP	29 (9.01)	92 (28.57)
73	JVM	101 (34.12)	IND (LS)	76 (25.68)	25 (8.44)	INC	34 (11.49)	85 (28.72)
74	JVM	346 (65.16)	AJSUP	35 (6.59)	311 (58.57)	INC	25 (4.71)	125 (23.54)
75	INC	215 (32.77)	JVM	190 (28.96)	25 (3.81)	IND (LS)	80 (12.2)	171 (26.07)
76	JVM	206 (49.05)	INC	113 (26.9)	93 (22.15)	AJSUP	25 (5.95)	76 (18.1)
77	JVM	207 (45)	INC	77 (16.74)	130 (28.26)	IND (LS)	32 (6.96)	144 (31.3)
78	JVM	353 (59.63)	INC	86 (14.53)	267 (45.1)	IND (LS)	20 (3.38)	133 (22.47)
79	INC	225 (45.36)	BJP	67 (13.51)	158 (31.85)	AITC	26 (5.24)	178 (35.89)
80	INC	178 (47.72)	BJP	59 (15.82)	119 (31.9)	JVM	33 (8.85)	103 (27.61)
81	INC	157 (40.78)	JVM	85 (22.08)	72 (18.7)	AJSUP	34 (8.83)	109 (28.31)
82	JVM	190 (38)	INC	111 (22.2)	79 (15.8)	AJSUP	41 (8.2)	158 (31.6)
83	JVM	170 (45.33)	INC	29 (7.73)	141 (37.6)	IND (JK)	29 (7.73)	147 (39.2)
84	JVM	91 (36.55)	INC	64 (25.7)	27 (10.85)	AJSUP	20 (8.03)	74 (29.72)
85	JVM	143 (33.97)	INC	138 (32.78)	5 (1.19)	IND (LS)	22 (5.23)	118 (28.03)
86	INC	51 (24.29)	JVM	47 (22.38)	4 (1.91)	AJSUP	44 (20.95)	68 (32.38)
87	INC	174 (25.7)	BJP	99 (14.62)	75 (11.08)	JVM	92 (13.59)	312 (46.09)
88	JVM	267 (70.63)	AJSUP	19 (5.03)	248 (65.6)	INC	16 (4.23)	76 (20.11)
89	JVM	234 (43.17)	IND (LS)	135 (24.91)	99 (18.26)	AJSUP	43 (7.93)	130 (23.99)
90	AJSUP	110 (22.92)	BJP	102 (21.25)	8 (1.67)	INC	69 (14.38)	199 (41.46)
91	BJP	150 (24.55)	AJSUP	108 (17.68)	42 (6.87)	INC	83 (13.58)	270 (44.19)
92	BJP	172 (35.1)	INC	151 (30.82)	21 (4.28)	AJSUP	66 (13.47)	101 (20.61)
93	BJP	178 (29.37)	IND (LS)	172 (28.38)	6 (0.99)	INC	118 (19.47)	138 (22.77)
94	BJP	180 (32.49)	INC	112 (20.22)	68 (12.27)	JVM	102 (18.41)	160 (28.88)
95	BJP	247 (46.43)	INC	97 (18.23)	150 (28.2)	AJSUP	61 (11.47)	127 (23.87)
96	INC	123 (31.87)	BJP	110 (28.5)	13 (3.37)	IND (LS)	64 (16.58)	89 (23.06)
97	BJP	128 (30.62)	JVM	70 (16.75)	58 (13.87)	INC	57 (13.64)	163 (39)
98	BJP	134 (34.01)	INC	131 (33.25)	3 (0.76)	JVM	63 (15.99)	66 (16.75)
99	BJP	205 (32.03)	INC	84 (13.13)	121 (18.9)	IND (LS)	82 (12.81)	269 (42.03)
100	BJP	74 (29.37)	INC	70 (27.78)	4 (1.59)	AJSUP	53 (21.03)	55 (21.83)
101	BJP	78 (31.97)	INC	59 (24.18)	19 (7.79)	AJSUP	47 (19.26)	60 (24.59)
102	AJSUP	154 (29.9)	IND (LS)	119 (23.11)	35 (6.79)	BJP	107 (20.78)	135 (26.21)
103	BJP	113 (36.22)	INC	70 (22.44)	43 (13.78)	AJSUP	66 (21.15)	63 (20.19)
104	BJP	90 (35.57)	AJSUP	53 (20.95)	37 (14.62)	IND (LS)	45 (17.79)	65 (25.69)
105	AJSUP	159 (32.45)	BJP	126 (25.71)	33 (6.74)	IND (LS)	67 (13.67)	138 (28.16)

Contd....

Socio-Economic Amenities - Rural

Access to Education Facilities

Particulars	Number of Villages (% of Population)				
	Available	Not Available	If Not Available (Distance of Nearest Facility)		
			A	B	C
Govt. Primary School	226 (94)	18 (6)	9 (2)	0 (0)	6 (2)
Private Primary School	14 (6)	230 (94)	2 (2)	0 (0)	0 (0)
Govt. Middle School	91 (49)	153 (51)	98 (35)	35 (12)	20 (5)
Private Middle School	4 (3)	240 (97)	0 (0)	0 (0)	0 (0)
Govt. Secondary School	7 (6)	237 (94)	47 (20)	88 (37)	94 (32)
Private Secondary School	1 (0)	243 (100)	4 (2)	3 (2)	1 (1)
Govt. Senior Secondary School	1 (2)	243 (98)	21 (9)	81 (34)	141 (55)
Private Senior Secondary School	0 (0)	244 (100)	0 (0)	0 (0)	0 (0)
Govt. Arts and Science Degree College	0 (0)	244 (100)	3 (2)	29 (12)	212 (87)
Private Arts and Science Degree College	0 (0)	244 (100)	0 (0)	0 (0)	0 (0)
Govt. Engineering College	0 (0)	244 (100)	0 (0)	0 (0)	244 (100)
Private Engineering College	0 (0)	244 (100)	0 (0)	0 (0)	0 (0)
Govt. Medicine College	0 (0)	244 (100)	0 (0)	5 (2)	239 (98)
Private Medicine College	0 (0)	244 (100)	0 (0)	0 (0)	0 (0)
Govt. Management Institute	0 (0)	244 (100)	0 (0)	0 (0)	244 (100)
Private Management Institute	0 (0)	244 (100)	0 (0)	0 (0)	0 (0)
Govt. Polytechnic	0 (0)	244 (100)	1 (0)	0 (0)	243 (100)
Private Polytechnic	0 (0)	244 (100)	0 (0)	0 (0)	0 (0)
Govt. Vocational Training School/ITI	0 (0)	244 (100)	0 (0)	0 (0)	244 (100)
Private Vocational Training School/ITI	0 (0)	244 (100)	0 (0)	0 (0)	0 (0)
Govt. Non Formal Training Centre	0 (0)	244 (100)	3 (1)	3 (2)	238 (98)
Private Non Formal Training Centre	0 (0)	244 (100)	0 (0)	0 (0)	0 (0)
Govt. School For Disabled	0 (0)	244 (100)	2 (1)	2 (1)	240 (98)
Private School For Disabled	0 (0)	244 (100)	0 (0)	0 (0)	0 (0)
Government Others	0 (0)	244 (100)	1 (1)	1 (0)	242 (99)
Private Others	0 (0)	244 (100)	0 (0)	0 (0)	0 (0)

Note : Distance A : Less than 5 km; B : Between 5-10 km; C : 10+ km.; Source : Data Analysis is based on 2011 Census.

DISCLAIMER

The Terms of Use and Disclaimer of Datanet India Private Limited (hereinafter referred to as "Datanet") for use of this analysis report of **Jaganathpur Assembly Constituency (Jaganathpur Vidhan Sabha)** :-

1. **Assembly Factbook™** is a Registered Trade Mark owned by Datanet.
2. All the maps are sketched and graphical representation only and have not been drawn to the scale and also not to represent the actual geographical area or boundary of the unit.
3. The data for the aforesaid analysis is based on authentic sources and has been culled from the various publications of Census, CSO and NSSO for district and block level data, various central and state government departments, Central & State Elections Commissions and the concerned Returning Officers' releases, Electoral Rolls, Election results and allied publications, internal assessment, surveys, estimates and analysis. Therefore, certain adjustment of data at micro level may have been done to arrive closer to the macro data.
4. Data have been provided on an "As Is" and "As AVAILABLE" basis
5. The colours shown in the maps or diagram and charts of a particular party, alliance or AC are indicative and do not represent them.
6. This publication which includes maps, sheets, graphs and data would be the property under copyright of Datanet only. The user may use these for its internal study, analysis and research purposes. It's public display, re-selling or any commercial uses by the user are not allowed.
7. Datanet has taken due care and caution in compilation and processing of data and allied information, but does not guarantee the accuracy, adequacy or completeness of any information/analysis and will be not responsible for any errors or omissions or for the results obtained from the use of such information/analysis.
8. All the contents for the publication have been culled from various authentic sources and Datanet reasonably believes such sources to be reliable, but does not make any representations, express or implied as to the accuracy or fitness of use of such information. The information or contents of the information/analysis do not constitute advice and should not be relied upon in making (or refraining from making) any decision. Any reliance placed upon the information provided by Datanet is the sole responsibility and strictly at the user's risk.
9. In no event will Datanet be liable for any damages (including, without limitation, damages for loss of business projects, or loss of profits) arising in contract, tort or otherwise from the use of or inability to use any of its contents, or from any action taken (or refrained from being taken) as a result of using the analysis or any of its contents. Datanet its directors, owners, editors, officials, employees, distributor and agents or any associate will not be liable for any errors in the information contained or any consequences arising from the use of the contents of the provided information/analysis.
10. If any provision of these terms and conditions is held invalid or illegal or unenforceable for any reason by any court of competent jurisdiction, such provision shall be severed and the remainder of provisions of the terms and conditions shall continue in full force and effect as if the Term of Use had been executed with the invalid, illegal or unenforceable provision eliminated.
11. If there are any discrepancies in the information provided, please bring it to attention of Datanet for suitable rectification measures.

**Buy Online This Complete Book At
Datanet India eBooks Store**

www.indiastatpublications.com

or go directly at

[http://www.indiastatpublications.com/
Assembly_factbook/Jharkhand/Singhbhum/Jaganathpur](http://www.indiastatpublications.com/Assembly_factbook/Jharkhand/Singhbhum/Jaganathpur)

 **india**stat**elections**

ISBN : 978-93-5301-981-5

