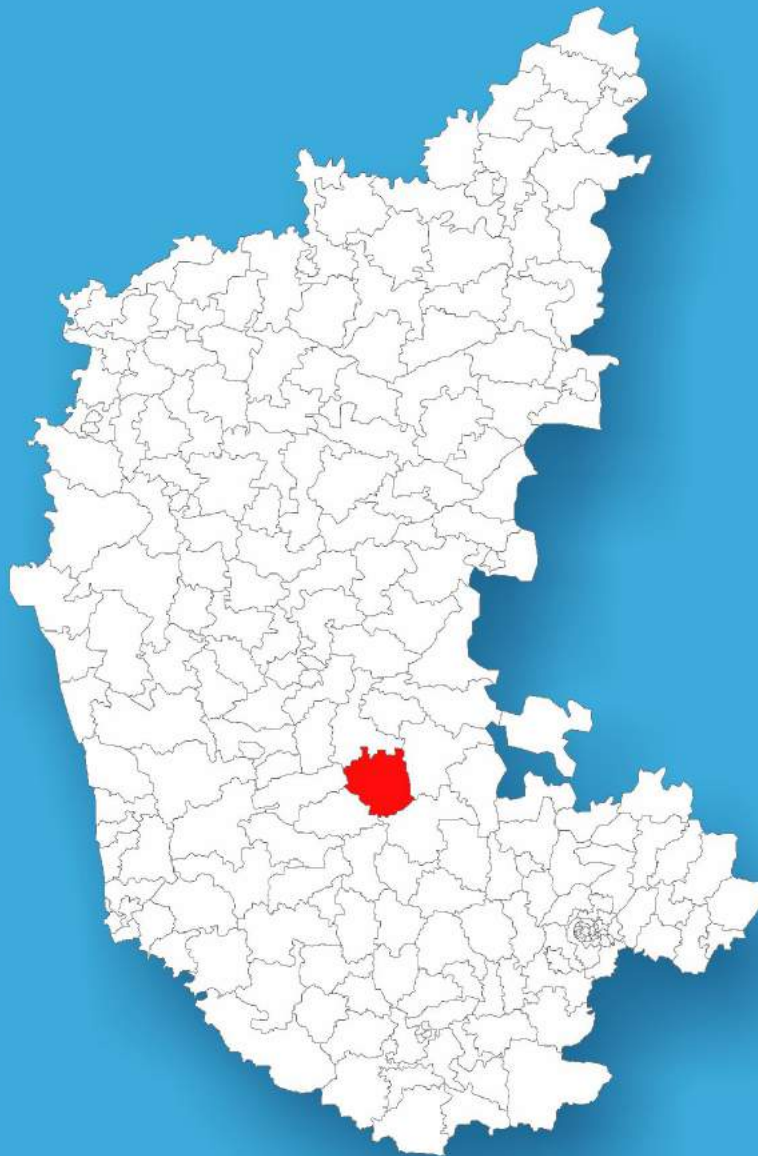




Karnataka

# Assembly Factbook™

Hosadurga Assembly Constituency



Key Electoral Data of Hosadurga  
Assembly Constituency (Vidhan Sabha)

Karnataka

# **Assembly Factbook™**

Hosadurga Assembly Constituency



Hosadurga Vidhan Sabha

**Editor & Director**

Dr. R.K. Thukral

**Research Editor**

Dr. Shafeeq Rahman

**Compiled, Researched and Published by  
Datanet India Pvt. Ltd.**

D-100, 1st Floor,

Okhla Industrial Area, Phase-I,  
New Delhi- 110020.

Ph.: 91-11- 43580781-84

Email : support@indiastatpublications.com

Website : www.indiastatelections.com

**Online Book Store :**

www.indiastatpublications.com

**Report No. :** AFB/KA-101-0123

**ISBN :** 978-93-87130-60-9

**First Edition :** January, 2018

**Sixth Updated Edition :** January, 2023

**Price :** Rs. 11500/-

US\$ 310/-

© **Datanet India Pvt. Ltd.**

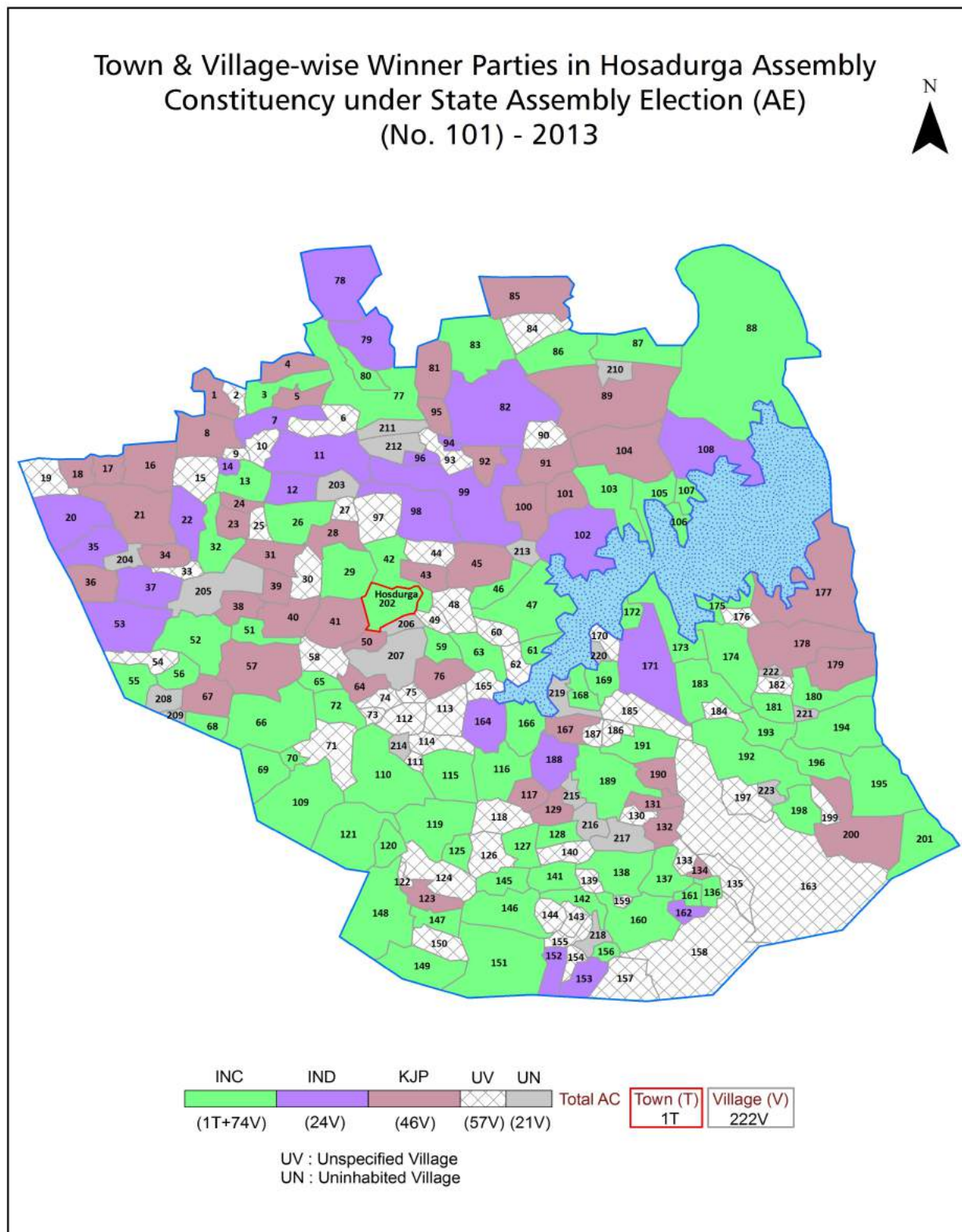
All rights reserved. No part of this book may be reproduced, stored in a retrieval system or transmitted in any form or by any means, mechanical photocopying, photographing, scanning, recording or otherwise without the prior written permission of the publisher. Please refer to Disclaimer at page no. 192 for the use of this publication.

Printed in India

No.	Particulars	Page No.
	<b>Introduction</b>	
1	Assembly Constituency - (Vidhan Sabha) at a Glance   Features of Assembly as per Delimitation Commission of India (2008)	1-2
	<b>Location and Political Maps</b>	
2	Location Map   Boundaries of Assembly Constituency - (Vidhan Sabha) in District   Boundaries of Assembly Constituency under Parliamentary Constituency - (Lok Sabha)   Town & Village-wise Winner Parties- 2019, 2018, 2014, 2013 and 2009	3-10
	<b>Administrative Setup (2011)</b>	
3	District   Sub-district   Towns   Villages   Inhabited Villages   Uninhabited Villages   Village Panchayat   Intermediate Panchayat	11-21
	<b>Demographics (2011)</b>	
4	Population   Households   Rural/Urban Population   Towns and Villages by Population Size   Sex Ratio (Total & 0-6 Years)   Religious Population   Social Population   Literacy Rate	22-23
	<b>Electoral Features</b>	
5	Important Dates of Last Elections Held   Electors by Gender   Service Electors   Voters   Voters Turnout   Polling Stations & Average Number of Electors per Polling Station   Electors by Age Group   Present Elected Representatives	24-29
	<b>Historical Summary Election Results</b>	
6	Vote Share of Major Parties   Winning Margin (Number & Percentage)   Polarity of Parties   Summary Result of Assembly Segment of Parliamentary Elections 2019, 2014, 2009, 2004, 1999   Summary Result of Assembly Elections 2018, 2013, 2008, 2004, 1999, 1994, 1989, 1985, 1983, 1978, 1972, 1967, 1962 and 1957	30-52
	<b>Polling Station Level Election Results</b>	
7	Name and Number of Polling Station 2019, 2018, 2014, 2013 and 2009   Polling Station-wise Electors, Voters & Voters Turnout 2019, 2018, 2014, 2013 and 2009   Polling Station wise Elections Results 2019, 2018, 2014, 2013 and 2009	53-172
	<b>Share of Assembly Constituency</b>	
8	Share of Assembly Constituency - (Vidhan Sabha) in State, District and Parliamentary Constituency - (Lok Sabha)	173
	<b>Socio-Economic Amenities (2011)</b>	
9	Access to Administrative Units   Agricultural, Manufacturing and Industrial Commodities   Demographic Indicators   Education   Health & Manpower   Drinking Water Supply   Sanitation   Entertainment and Recreations Infrastructure   Power   Food Allocation Distribution and Marketing of Agriculture Commodities Infrastructure   Transport and Road Infrastructure   Communication   Banking and Financial Services   Land Use   Irrigation Source	175-189
10	<b>Abbreviation &amp; Sources</b>	190-191
11	<b>Disclaimer</b>	192



## Location & Political Map



## Administrative Setup

### List of Village Panchayat & Intermediate Panchayat (Block) Name - 2011

Village Name	Village Panchayat Name	Intermediate Panchayat Name
Adavi Sangenahalli	Bokikere	Hosdurga
Adrikatte	Sanihalli	Hosdurga
Agasarahalli	Guddadaneralakere	Hosdurga
Agrahara	S Nerlakere	Hosdurga
Ajjikamasagara	Karehalli	Hosdurga
Aladahalli	Kangavalli	Hosdurga
Alagatta	Ballalasamudra	Hosdurga
Anivala	Anivala	Hosdurga
Aralahalli	Kainadu	Hosdurga
Aralihalli	Bokikere	Hosdurga
Arehalli	Mathodu	Hosdurga
Arenahalli	S Nerlakere	Hosdurga
Athimage	Athimage	Hosdurga
Attigatta	Kellodu	Hosdurga
Bachavara	Kainadu	Hosdurga
Bagasettihalli	Kangavalli	Hosdurga
Bagur	Bagur	Hosdurga
Balenahalli	Kanchipura	Hosdurga
Ballalasamudra	Ballalasamudra	Hosdurga
Ballalasamudra Kaval	Kangavalli	Hosdurga
Ballalasamudrakere Kaval	Kabbala	Hosdurga
Ballekere	Anivala	Hosdurga
Banapura	Sriramapura	Hosdurga
Banasihalli	Doddagatta	Hosdurga
Beesanahalli	Devigere	Hosdurga
Belagur	Belagur	Hosdurga
Benakanahalli	Janakal	Hosdurga
Bevinahalli	Lakkihalli	Hosdurga
Bokikere	Bokikere	Hosdurga

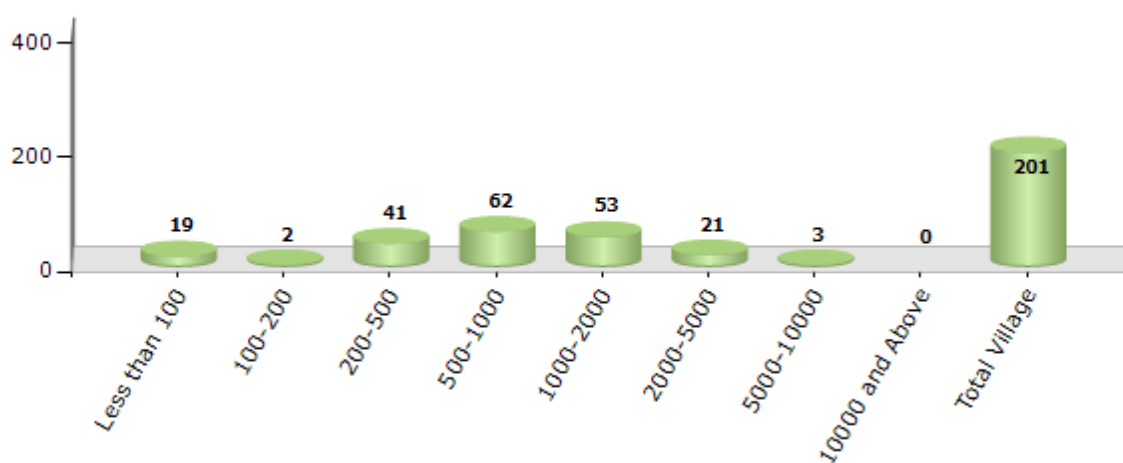
Contd....

## Demographic

### Number of Villages by Population Size - 2011

Less than 100	100-200	200-500	500-1000	1000-2000	2000-5000	5000-10000	10000 and Above	Total Village
19	2	41	62	53	21	3	0	201

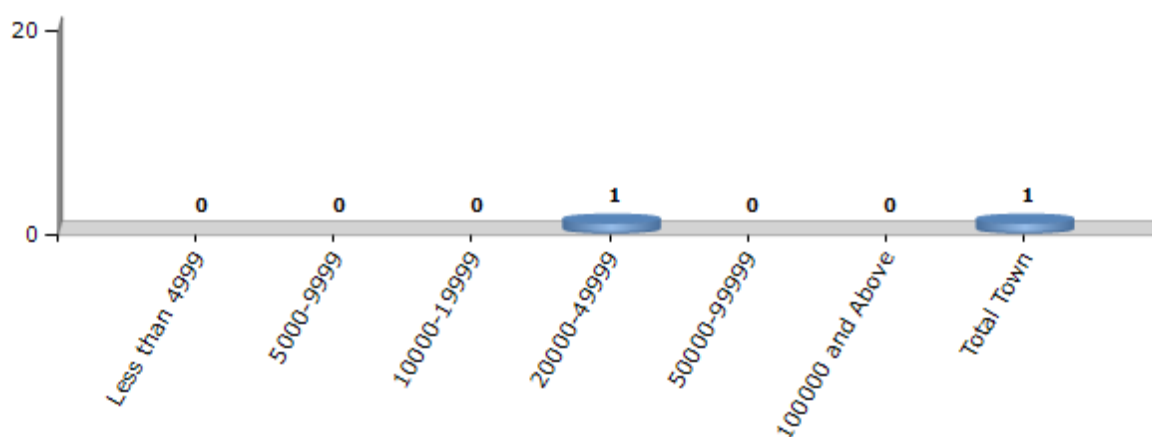
Number of Villages by Population Size - 2011



### Number of Towns by Population Size - 2011

Less than 4999	5000-9999	10000-19999	20000-49999	50000-99999	100000 and Above	Total Town
0	0	0	1	0	0	1

Number of Towns by Population Size - 2011



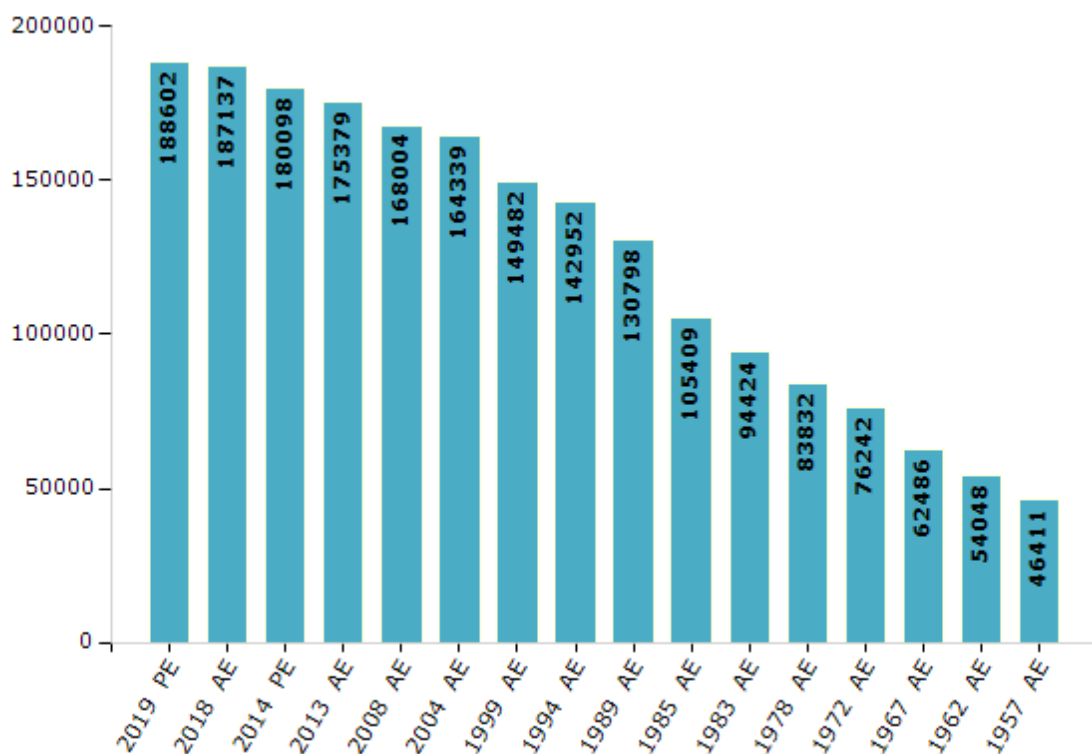
## Electoral Features

### Electors by Male & Female

Year	Male	Female	Others	Total
2019 PE	96121	92481	0	188602
2018 AE	95626	91511	0	187137
2014 PE	92597	87498	3	180098
2013 AE	90664	84715	0	175379
2009 PE	-	-	-	-
2008 AE	86356	81648	-	168004
2004 PE	-	-	-	-
2004 AE	83256	81083	-	164339
1999 PE	-	-	-	-
1999 AE	75468	74014	-	149482

Year	Male	Female	Others	Total
1994 AE	71899	71053	-	142952
1989 AE	66296	64502	-	130798
1985 AE	53588	51821	-	105409
1983 AE	47996	46428	-	94424
1978 AE	42302	41530	-	83832
1972 AE	39148	37094	-	76242
1967 AE	-	-	-	62486
1962 AE	-	-	-	54048
1957 AE	-	-	-	46411

Number of Electors



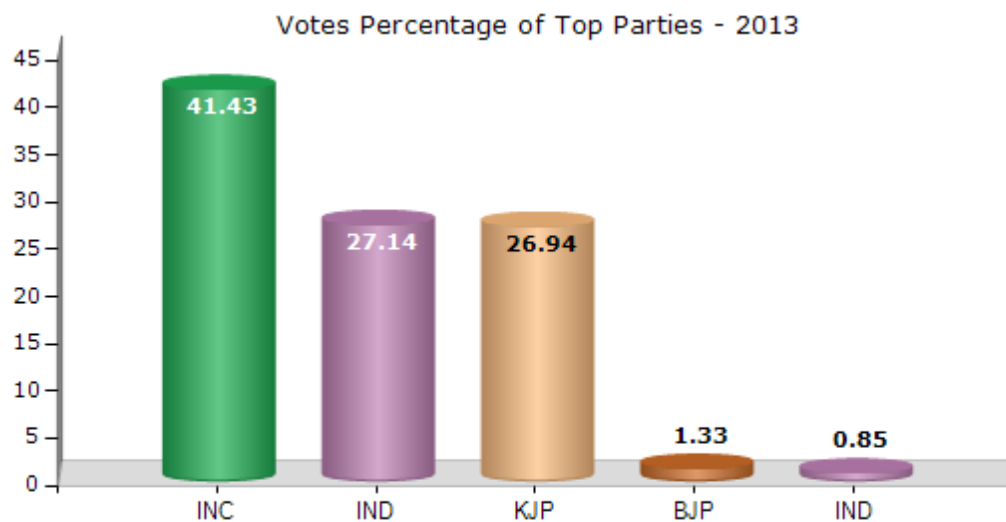
**Note :** AE : Assembly Election, PE : Assembly Segment of Parliamentary Election



## Historical Summary Election Results

### Summary Result of Assembly Election - 2013

Candidate Name	Party	Votes	Votes %
B.G. Govindappa	INC	58010	41.43
Gulihatti D. Shekar	IND	37993	27.14
S. Lingamurthy	KJP	37717	26.94
M. Lakshmana	BJP	1866	1.33
K. Shivanna	IND	1190	0.85
Thimmappa K.	BSP	828	0.59
A. Chittappa Yadav	SP	616	0.44
Sudhabai Malleshnaika	JD(S)	615	0.44
Syed Ismail	JD(U)	448	0.32
G. Govinadaraju	BSRCP	406	0.29
K. Chandrappa	IND	314	0.22



## Polling Station Level Election Results

### Number and Name of Polling Stations (PS) (2018)

Number of Polling Stations	Name of Polling Stations	Number of Polling Stations	Name of Polling Stations
1	Government Higher Primary School, Duggavara	22	Government Lower Primary School, D. Mallapura
2	Government Lower Primary School, Navale Kallu Vaddaratti	23	Government Lower Primary School, Mavinakatte
3	Government Composite High School, Gulihatti	24	Government Higher Primary School, Kabbala
4	Government Lower Primary School, Gulihatti Vaddaratti	25	Government Lower Primary School, Beesanahalli
5	Government Lower Primary School, Sevanagara	26	Government Higher Primary School, Nagarakatte
6	Government Higher Primary School, Nakikiere	27	Government Higher Primary School, Hebballi
7	Government Higher Primary School, Doddakittadahalli	28	Government Higher Primary School, Heruru
8	Government Higher Primary School, Sannakittadahalli	29	Government Higher Primary School, Kantapura
9	Government Lower Primary School, Pani Kittadahalli	30	Government Higher Primary School, Nagayyanahatti
10	Government Lower Primary School, Madihalli	31	Government Higher Primary School, Seeranakette
11	Government Higher Primary School, (Left Wing), Lakkihalli-1	32	Government Higher Primary School, (Right Wing), Madadakere-1
12	Government Higher Primary School, (Right Wing), Lakkihalli-2	33	Government Higher Primary School, (Left Wing), Madadakere-2
13	Government Lower Primary School, Anchibarihatti	34	Government Higher Primary School, M. Kodihalli
14	Government Higher Primary School, Kenkere	35	Government Lower Primary School, Benakanahalli
15	Government Higher Primary School, Yallabovihatti	36	Government Lower Primary School, Narasipura
16	Government Lower Primary School, Mudalabovihatti	37	Government Lower Primary School, Galirangiahnahatti
17	Government Higher Primary School, (Left Wing), Janakallu-1	38	Government Higher Primary School, Devigere
18	Government Higher Primary School, (Right Wing), Janakallu-2	39	Government Higher Primary School, (Right Wing), Kondapura-1
19	Government Higher Primary School, Banasihalli	40	Government Higher Primary School, (Left Wing), Kondapura-2
20	Government Higher Primary School, Tanigekallu	41	Government Higher Primary School, Chikkayagati
21	Government Higher Primary School, Doddagatta	42	Government Higher Primary School, Mallappanahalli-1

Contd....

## Polling Station Level Election Results

### Polling Station-wise Votes Secured by Overall Top Five Parties in Hosadurga Assembly in Assembly Election (AE) under Chitradurga Parliamentary Constituency in Karnataka (2018)

Number of Polling Station	Winner - Gulihatti D Shekar (BJP)	Runner-up - B G Govindappa (INC)	3rd - Shashikumar (JD(S))	4th - M S Sathish Jangama (IND)	5th - Shamanth A R (IND)	NOTA	Other	Total Votes Secured
36	251	117	7	2	0	3	1	381
37	503	88	3	2	1	7	4	608
38	655	167	14	2	1	9	3	851
39	475	290	10	2	4	15	1	797
40	222	161	4	0	0	1	0	388
41	362	193	3	0	0	4	1	563
42	517	240	5	5	0	10	3	780
43	286	299	3	0	0	5	4	597
44	286	153	3	4	0	3	1	450
45	240	149	3	3	0	4	8	407
46	559	169	5	5	0	8	5	751
47	392	112	2	0	0	2	0	508
48	322	135	11	0	1	4	5	478
49	454	230	8	2	0	5	1	700
50	205	93	0	1	2	9	1	311
51	219	185	1	3	1	1	2	412
52	370	106	6	1	0	0	0	483
53	394	429	24	0	2	5	11	865
54	520	290	5	7	1	9	4	836
55	649	143	3	1	0	15	4	815
56	247	75	1	1	0	8	1	333
57	353	80	1	3	0	2	5	444
58	354	203	12	4	3	7	10	593
59	531	174	5	2	0	3	4	719
60	171	164	2	0	0	1	0	338
61	299	139	1	1	0	0	3	443
62	299	352	8	5	5	10	3	682
63	181	197	11	1	1	0	2	393
64	103	103	6	1	0	2	0	215
65	173	145	15	2	3	1	2	341
66	306	188	5	0	0	7	12	518
67	808	263	5	2	1	14	5	1098
68	612	68	6	1	2	10	5	704
69	589	221	10	3	4	5	6	838
70	94	283	4	0	1	1	1	384

Contd....

## Polling Station Level Election Results

**Winner, Runner-up and 3rd Party Position & Winning Margin According to Polling Stations in Hosadurga Assembly in Assembly Election (AE) under Chitradurga Parliamentary Constituency in Karnataka (2018)**

Polling Station Number	Winner Party	Winner Votes (%)	Runner-up Party	Runner-up Votes (%)	Winning Margin Votes (%)	Third Party	Third Party Votes (%)	Other Votes (%)
71	BJP	512 (73.99)	INC	164 (23.7)	348 (50.29)	IND (MSSJ)	5 (0.72)	11 (1.59)
72	BJP	422 (59.1)	INC	267 (37.39)	155 (21.71)	JD(S)	7 (0.98)	18 (2.52)
73	BJP	231 (64.35)	INC	107 (29.81)	124 (34.54)	JD(S)	3 (0.84)	18 (5.01)
74	BJP	294 (72.24)	INC	107 (26.29)	187 (45.95)	JD(S)	2 (0.49)	4 (0.98)
75	BJP	346 (68.65)	INC	136 (26.98)	210 (41.67)	JD(S)	5 (0.99)	17 (3.37)
76	BJP	547 (63.9)	INC	293 (34.23)	254 (29.67)	JD(S)	5 (0.58)	11 (1.29)
77	BJP	759 (79.31)	INC	165 (17.24)	594 (62.07)	IND (MSSJ)	9 (0.94)	24 (2.51)
78	BJP	490 (49.6)	INC	475 (48.08)	15 (1.52)	JD(S)	10 (1.01)	13 (1.32)
79	INC	636 (72.94)	BJP	227 (26.03)	409 (46.91)	JD(S)	5 (0.57)	4 (0.46)
80	BJP	698 (78.6)	INC	168 (18.92)	530 (59.68)	JD(S)	9 (1.01)	13 (1.46)
81	INC	400 (50.38)	BJP	320 (40.3)	80 (10.08)	JD(S)	13 (1.64)	61 (7.68)
82	BJP	612 (74.82)	INC	173 (21.15)	439 (53.67)	JD(S)	9 (1.1)	24 (2.93)
83	BJP	464 (60.81)	INC	268 (35.12)	196 (25.69)	JD(S)	6 (0.79)	25 (3.28)
84	BJP	635 (86.75)	INC	81 (11.07)	554 (75.68)	IND (MSSJ)	3 (0.41)	13 (1.78)
85	INC	350 (48.81)	BJP	326 (45.47)	24 (3.34)	JD(S)	15 (2.09)	26 (3.63)
86	BJP	408 (58.62)	INC	245 (35.2)	163 (23.42)	JD(S)	14 (2.01)	29 (4.17)
87	BJP	461 (58.43)	INC	307 (38.91)	154 (19.52)	JD(S)	7 (0.89)	14 (1.77)
88	BJP	682 (71.19)	INC	239 (24.95)	443 (46.24)	JD(S)	20 (2.09)	17 (1.77)
89	BJP	437 (77.48)	INC	108 (19.15)	329 (58.33)	JD(S)	7 (1.24)	12 (2.13)
90	BJP	377 (74.95)	INC	111 (22.07)	266 (52.88)	JD(S)	11 (2.19)	4 (0.8)
91	BJP	554 (49.73)	INC	517 (46.41)	37 (3.32)	JD(S)	13 (1.17)	30 (2.69)
92	BJP	362 (50.49)	INC	311 (43.38)	51 (7.11)	JD(S)	14 (1.95)	30 (4.18)
93	BJP	401 (93.47)	INC	24 (5.59)	377 (87.88)	JD(S)	0 (0)	4 (0.93)
94	INC	421 (67.79)	BJP	177 (28.5)	244 (39.29)	IND (GRRG)	6 (0.97)	17 (2.74)
95	INC	439 (57.01)	BJP	299 (38.83)	140 (18.18)	JD(S)	6 (0.78)	26 (3.38)
96	BJP	152 (66.38)	INC	72 (31.44)	80 (34.94)	JD(S)	3 (1.31)	2 (0.87)
97	BJP	237 (56.29)	INC	174 (41.33)	63 (14.96)	JD(S)	5 (1.19)	5 (1.19)
97A	INC	272 (49.19)	BJP	268 (48.46)	4 (0.73)	JD(S)	8 (1.45)	5 (0.9)
98	INC	423 (60.86)	BJP	257 (36.98)	166 (23.88)	JD(S)	8 (1.15)	7 (1.01)
99	INC	402 (69.79)	BJP	160 (27.78)	242 (42.01)	JD(S)	6 (1.04)	8 (1.39)
100	INC	464 (83.91)	BJP	83 (15.01)	381 (68.9)	JD(S)	2 (0.36)	4 (0.72)
101	INC	413 (57.28)	BJP	300 (41.61)	113 (15.67)	IND (SAR)	4 (0.55)	4 (0.55)
102	BJP	338 (52.81)	INC	286 (44.69)	52 (8.12)	JD(S)	10 (1.56)	6 (0.94)
103	BJP	358 (57.01)	INC	262 (41.72)	96 (15.29)	JD(S)	5 (0.8)	3 (0.48)
104	BJP	426 (51.26)	INC	379 (45.61)	47 (5.65)	JD(S)	8 (0.96)	18 (2.17)

Contd....

## Socio-Economic Amenities - Rural

### Access to Education Facilities

Particulars	Number of Village (% of Population)				
	Available	Not Available	If Not Available (Distance of Nearest Facility)		
			A	B	C
Govt. Primary School	175 (96)	26 (4)	22 (1)	1 (0)	0 (0)
Private Primary School	11 (16)	190 (84)	0 (0)	0 (0)	0 (0)
Govt. Middle School	104 (76)	97 (24)	89 (21)	5 (1)	0 (0)
Private Middle School	11 (13)	190 (87)	0 (0)	0 (0)	0 (0)
Govt. Secondary School	25 (27)	176 (73)	92 (37)	18 (5)	0 (0)
Private Secondary School	27 (25)	174 (75)	33 (9)	9 (2)	0 (0)
Govt. Senior Secondary School	14 (17)	187 (83)	65 (28)	75 (38)	25 (9)
Private Senior Secondary School	2 (1)	199 (99)	7 (2)	13 (5)	0 (0)
Govt. Arts and Science Degree College	0 (0)	201 (100)	6 (3)	32 (15)	155 (75)
Private Arts and Science Degree College	1 (1)	200 (99)	1 (1)	2 (2)	4 (4)
Govt. Engineering College	0 (0)	201 (100)	0 (0)	0 (0)	0 (0)
Private Engineering College	0 (0)	201 (100)	0 (0)	1 (0)	200 (100)
Govt. Medicine College	0 (0)	201 (100)	1 (1)	0 (0)	0 (0)
Private Medicine College	0 (0)	201 (100)	2 (1)	46 (24)	152 (74)
Govt. Management Institute	0 (0)	201 (100)	0 (0)	0 (0)	0 (0)
Private Management Institute	0 (0)	201 (100)	3 (1)	2 (1)	189 (96)
Govt. Polytechnic	0 (0)	201 (100)	0 (0)	0 (0)	193 (96)
Private Polytechnic	0 (0)	201 (100)	0 (0)	1 (1)	7 (4)
Govt. Vocational Training School/ITI	0 (0)	201 (100)	6 (3)	21 (10)	85 (43)
Private Vocational Training School/ITI	3 (5)	198 (95)	1 (1)	13 (7)	72 (31)
Govt. Non Formal Training Centre	0 (0)	201 (100)	3 (0)	27 (12)	115 (60)
Private Non Formal Training Centre	1 (0)	200 (100)	4 (3)	7 (5)	44 (19)
Govt. School For Disabled	0 (0)	201 (100)	0 (0)	2 (1)	62 (29)
Private School For Disabled	0 (0)	201 (100)	0 (0)	1 (0)	136 (69)
Government Others	0 (0)	201 (100)	0 (0)	2 (0)	195 (98)
Private Others	0 (0)	201 (100)	0 (0)	0 (0)	4 (2)

Note : Distance A : Less than 5 km; B : Between 5-10 km; C : 10+ km.; Source : Data Analysis is based on 2011 Census.

## DISCLAIMER

The Terms of Use and Disclaimer of Datanet India Private Limited (hereinafter referred to as "Datanet") for use of this analysis report of **Hosadurga Assembly Constituency (Hosadurga Vidhan Sabha)** :-

1. **Assembly Factbook™** is a Registered Trade Mark owned by Datanet.
2. All the maps are sketched and graphical representation only and have not been drawn to the scale and also not to represent the actual geographical area or boundary of the unit.
3. The data for the aforesaid analysis is based on authentic sources and has been culled from the various publications of Census, CSO and NSSO for district and block level data, various central and state government departments, Central & State Elections Commissions and the concerned Returning Officers' releases, Electoral Rolls, Election results and allied publications, internal assessment, surveys, estimates and analysis. Therefore, certain adjustment of data at micro level may have been done to arrive closer to the macro data.
4. Data have been provided on an "As Is" and "As AVAILABLE" basis
5. The colours shown in the maps or diagram and charts of a particular party, alliance or AC are indicative and do not represent them.
6. This publication which includes maps, sheets, graphs and data would be the property under copyright of Datanet only. The user may use these for its internal study, analysis and research purposes. It's public display, re-selling or any commercial uses by the user are not allowed.
7. Datanet has taken due care and caution in compilation and processing of data and allied information, but does not guarantee the accuracy, adequacy or completeness of any information/analysis and will be not responsible for any errors or omissions or for the results obtained from the use of such information/analysis.
8. All the contents for the publication have been culled from various authentic sources and Datanet reasonably believes such sources to be reliable, but does not make any representations, express or implied as to the accuracy or fitness of use of such information. The information or contents of the information/analysis do not constitute advice and should not be relied upon in making (or refraining from making) any decision. Any reliance placed upon the information provided by Datanet is the sole responsibility and strictly at the user's risk.
9. In no event will Datanet be liable for any damages (including, without limitation, damages for loss of business projects, or loss of profits) arising in contract, tort or otherwise from the use of or inability to use any of its contents, or from any action taken (or refrained from being taken) as a result of using the analysis or any of its contents. Datanet its directors, owners, editors, officials, employees, distributor and agents or any associate will not be liable for any errors in the information contained or any consequences arising from the use of the contents of the provided information/analysis.
10. If any provision of these terms and conditions is held invalid or illegal or unenforceable for any reason by any court of competent jurisdiction, such provision shall be severed and the remainder of provisions of the terms and conditions shall continue in full force and effect as if the Term of Use had been executed with the invalid, illegal or unenforceable provision eliminated.
11. If there are any discrepancies in the information provided, please bring it to attention of Datanet for suitable rectification measures.



**Buy Online This Complete Book At  
Datanet India eBooks Store**

**[www.indiastatpublications.com](http://www.indiastatpublications.com)**

**or go directly at**

**[http://www.indiastatpublications.com/  
Assembly\\_factbook/Karnataka/Chitradurga/ Hosadurga](http://www.indiastatpublications.com/Assembly_factbook/Karnataka/Chitradurga/Hosadurga)**

 **india**stat**elections**

ISBN : 978-93-87130-60-9



9 789387 130609