



Karnataka

# Assembly Factbook™

Moodabidri Assembly Constituency



Key Electoral Data of Moodabidri  
Assembly Constituency (Vidhan Sabha)

Karnataka

# Assembly Factbook™

Moodabidri Assembly Constituency



Moodabidri Vidhan Sabha

## **Editor & Director**

Dr. R.K. Thukral

## **Research Editor**

Dr. Shafeeq Rahman

## **Compiled, Researched and Published by Datanet India Pvt. Ltd.**

D-100, 1st Floor,

Okhla Industrial Area, Phase-I,

New Delhi- 110020.

Ph.: 91-11- 43580781-84

Email : support@indiastatpublications.com

Website : <http://www.indiastatelections.com>

## **Online Book Store :**

[www.indiastatpublications.com](http://www.indiastatpublications.com)

**Report No. :** AFB/KA-201-0125

**ISBN :** 978-93-5802-051-9

**First Edition :** January, 2018

**Eighth Updated Edition :** January, 2025

**Price :** Rs.11500/-

US\$ 310

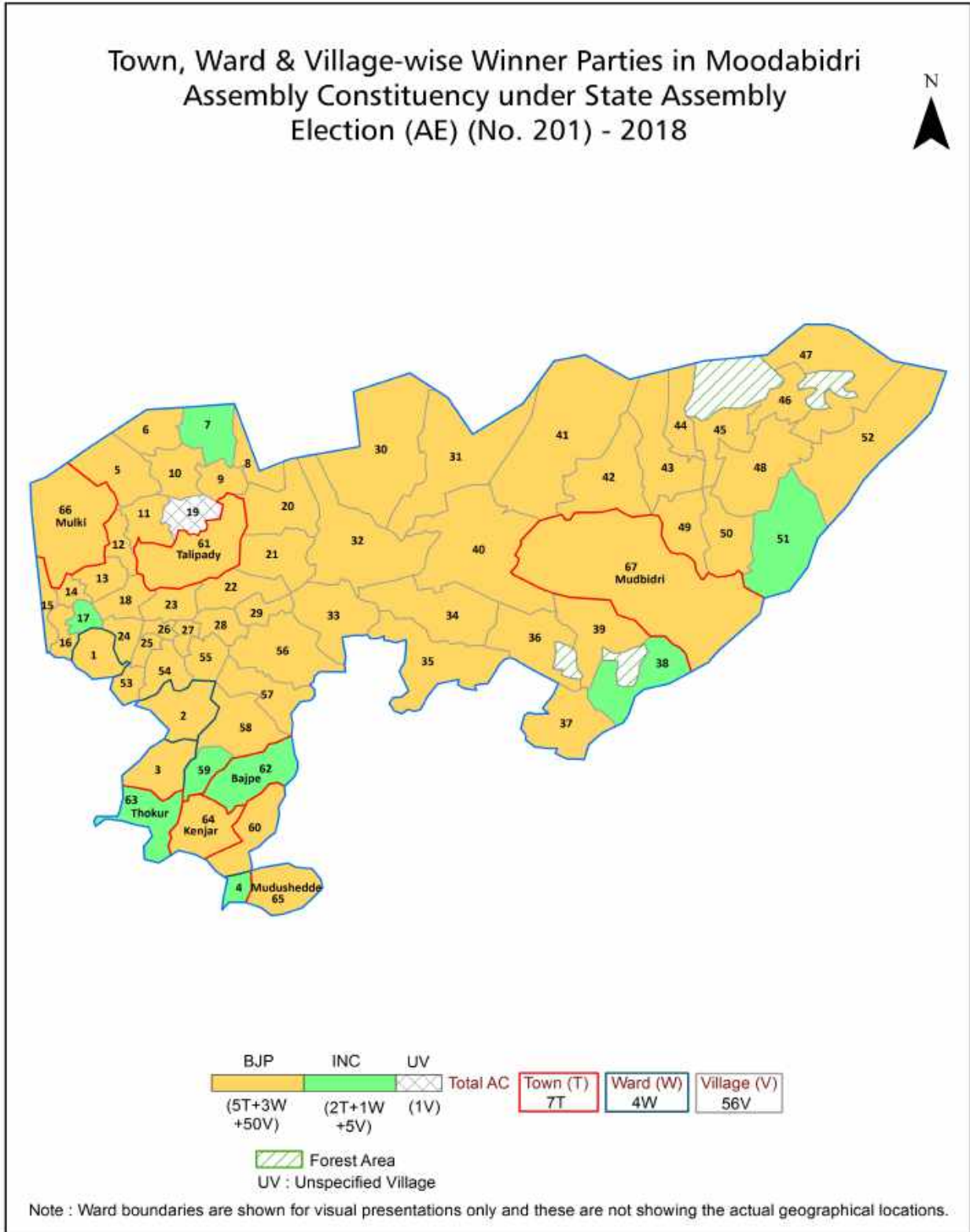
**© Datanet India Pvt. Ltd.**

All rights reserved. No part of this book may be reproduced, stored in a retrieval system or transmitted in any form or by any means, mechanical photocopying, photographing, scanning, recording or otherwise without the prior written permission of the publisher. Please refer to Disclaimer at page no. 181 for the use of this publication.

Printed in India

No.	Particulars	Page No.
	<b>Introduction</b>	
1	Assembly Constituency - (Vidhan Sabha) at a Glance   Features of Assembly as per Delimitation Commission of India (2008)	1-2
	<b>Location and Political Maps</b>	
2	Location Map   Boundaries of Assembly Constituency - (Vidhan Sabha) in District   Boundaries of Assembly Constituency under Parliamentary Constituency - (Lok Sabha)   Town, Ward & Village-wise Winner Parties- 2024, 2023, 2019, 2018, 2014 and 2013	3-11
	<b>Administrative Setup (2011)</b>	
3	District   Sub-district   Towns   Villages   Inhabited Villages   Uninhabited Villages   Village Panchayat   Intermediate Panchayat	12-15
	<b>Demographics (2011)</b>	
4	Population   Households   Rural/Urban Population   Towns, Ward and Villages by Population Size   Sex Ratio (Total & 0-6 Years)   Religious Population   Social Population   Literacy Rate	16-18
	<b>Electoral Features</b>	
5	Important Dates of Last Elections Held   Electors by Gender   Service Electors   Voters   Voters Turnout   Polling Stations & Average Number of Electors per Polling Station   Electors by Age Group   Present Elected Representatives	19-24
	<b>Historical Summary Election Results</b>	
6	Vote Share of Major Parties   Winning Margin (Number & Percentage)   Polarity of Parties   Summary Result of Assembly Segment of Parliamentary Elections 2024, 2019, 2014, 2009, 2004 and 1999   Summary Result of Assembly Elections 2023, 2018, 2013, 2008, 2004, 1999, 1994, 1989, 1985, 1983, 1978, 1972, 1967 and 1962	25-47
	<b>Polling Station Level Election Results</b>	
7	Name and Number of Polling Station 2024, 2023, 2019, 2018, 2014 and 2013   Polling Station-wise Electors, Voters & Voters Turnout 2024, 2023, 2019, 2018, 2014 and 2013   Polling Station wise Elections Results 2024, 2023, 2019, 2018, 2014 and 2013	48-161
	<b>Share of Assembly Constituency</b>	
8	Share of Assembly Constituency - (Vidhan Sabha) in State, District and Parliamentary Constituency - (Lok Sabha)	162
	<b>Socio-Economic Amenities (2011)</b>	
9	Access to Administrative Units   Agricultural, Manufacturing and Industrial Commodities   Demographic Indicators   Education   Health & Manpower   Drinking Water Supply   Sanitation   Entertainment and Recreations Infrastructure   Power   Food Allocation Distribution and Marketing of Agriculture Commodities Infrastructure   Transport and Road Infrastructure   Communication   Banking and Financial Services   Land Use   Irrigation Source	164-178
10	<b>Abbreviation &amp; Sources</b>	179-180
11	<b>Disclaimer</b>	181

Location & Political Map



## Administrative Setup

### List of Village Panchayat & Intermediate Panchayat (Block) Name - 2011

Village Name	Village Panchayat Name	Intermediate Panchayat Name
Aikala	Aikala	Mangalore
Athikari Bettu	Kilpady	Mangalore
Attur	Kemral	Mangalore
Badagayekkaru	Yekkaru	Mangalore
Badagumijaru	Tenkamijar	Mangalore
Balkunje	Balkunje	Mangalore
Bellairu	Padupanambur	Mangalore
Beluvai	Beluvai	Mangalore
Daregudde	Daregudde	Mangalore
Delanthabettu	Surinje	Mangalore
Elathur	Kinnigoli	Mangalore
Elinje	Aikala	Mangalore
Ervuailu	Hosabettu	Mangalore
Haleangady	Haleangady	Mangalore
Hosabettu	Hosabettu	Mangalore
Kadandale	Palladka	Mangalore
Kalavar	Bala	Mangalore
Kallamundkooru	Kallamundkur	Mangalore
Karnire	Balkunje	Mangalore
Kavathar	Balkunje	Mangalore
Kellaputhige	Daregudde	Mangalore
Kemral	Kemral	Mangalore
Kilenjur	Mennabettu	Mangalore
Kilpady	Kilpady	Mangalore
Koikude	Kemral	Mangalore
Kollur	Balkunje	Mangalore
Kondemula	Mennabettu	Mangalore
Madya	Chelur	Mangalore
Malavoor	Malavoor	Mangalore

Contd....

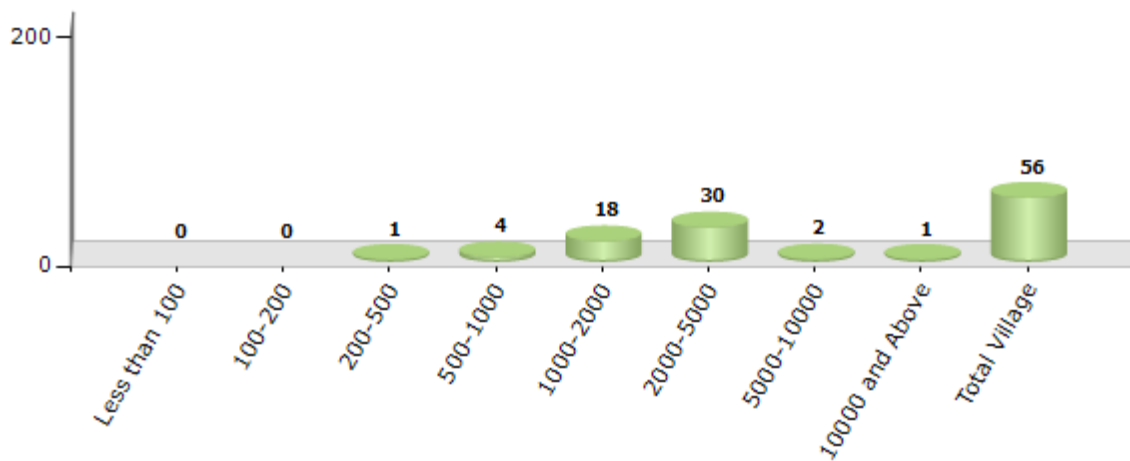


Demographic

Number of Villages by Population Size - 2011

Less than 100	100-200	200-500	500-1000	1000-2000	2000-5000	5000-10000	10000 and Above	Total Village
0	0	1	4	18	30	2	1	56

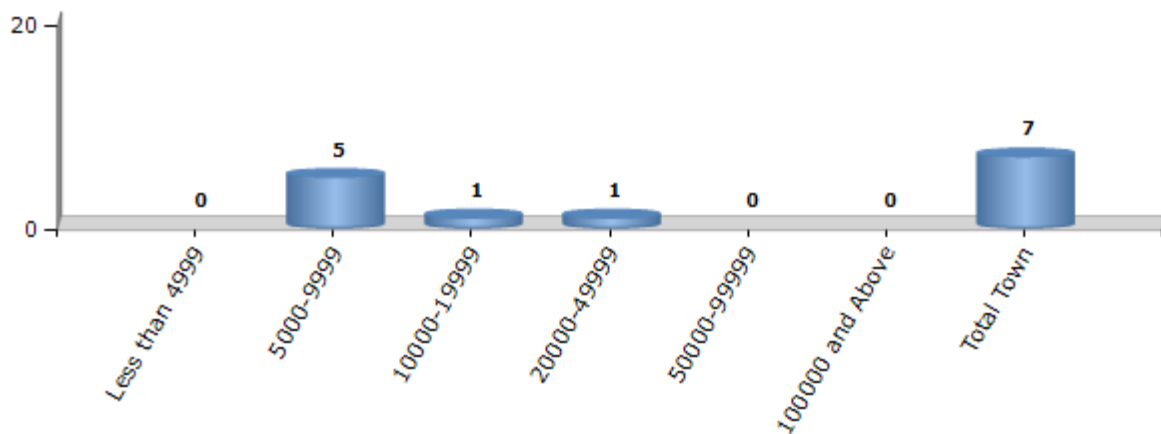
Number of Villages by Population Size - 2011



Number of Towns by Population Size - 2011

Less than 4999	5000-9999	10000-19999	20000-49999	50000-99999	100000 and Above	Total Town
0	5	1	1	0	0	7

Number of Towns by Population Size - 2011

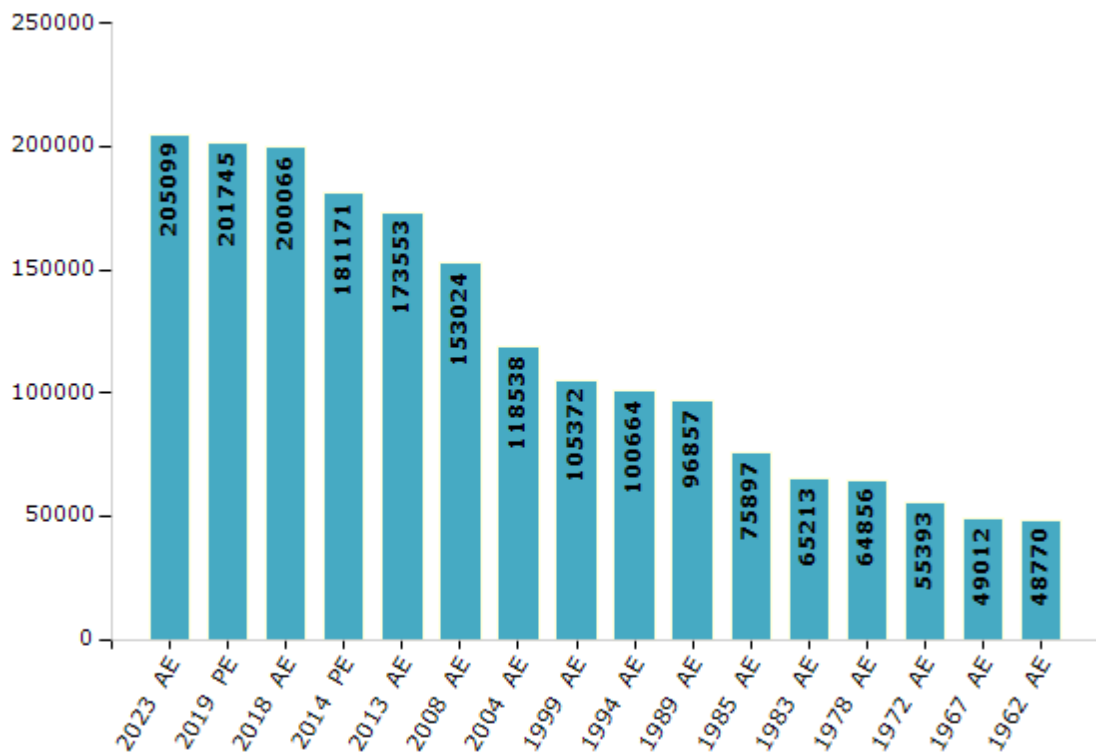


## Electoral Features

### Electors by Male & Female

Year	Male	Female	Others	Total	Year	Male	Female	Others	Total
2023 AE	99137	105957	5	205099	1999 AE	48358	57014	-	105372
2019 PE	97331	104402	12	201745	1994 AE	46142	54522	-	100664
2018 AE	96753	103300	13	200066	1989 AE	44399	52458	-	96857
2014 PE	87096	94075	0	181171	1985 AE	34014	41883	-	75897
2013 AE	83138	90415	0	173553	1983 AE	28797	36416	-	65213
2009 PE	-	-	-	-	1978 AE	28619	36237	-	64856
2008 AE	71662	81362	-	153024	1972 AE	24099	31294	-	55393
2004 PE	-	-	-	-	1967 AE	-	-	-	49012
2004 AE	55781	62757	-	118538	1962 AE	-	-	-	48770
1999 PE	-	-	-	-	1957 AE	-	-	-	-

Number of Electors



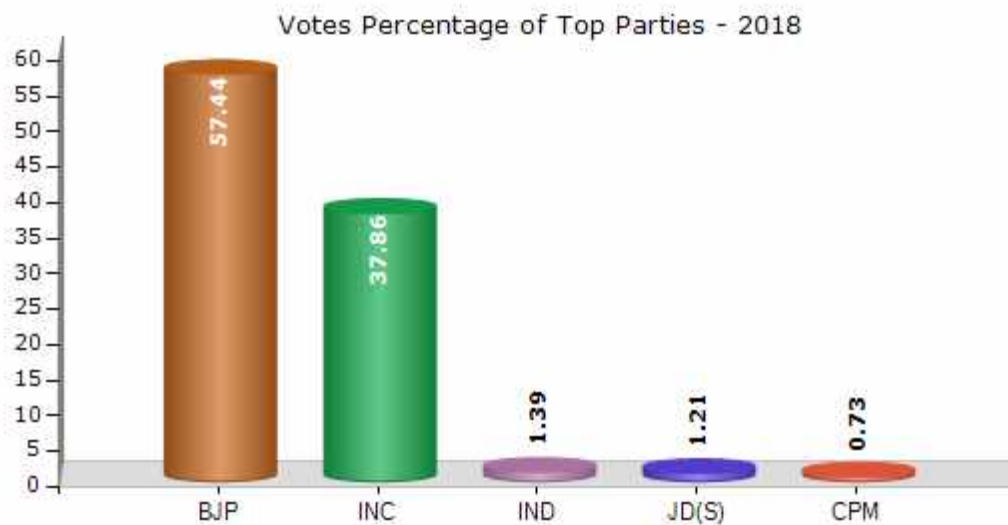
Note : AE : Assembly Election, PE : Assembly Segment of Parliamentary Election



## Historical Summary Election Results

### Summary Result of Assembly Election - 2018

Candidate Name	Party	Votes	Votes %
Umanatha. A. Kotian	BJP	87444	57.44
K. Abhayachandra	INC	57645	37.86
Ashwin Jossy Pereira	IND	2111	1.39
Jeevan Krishna Shetty	JD(S)	1845	1.21
K. Yadava Shetty	CPM	1114	0.73
Abdul Rehiman	AIMEP	616	0.4
Reena Pinto	IND	435	0.29
	NOTA	1037	0.68



## Polling Station Level Election Results

### Number and Name of Polling Stations (PS) (2023)

Number of Polling Stations	Name of Polling Stations	Number of Polling Stations	Name of Polling Stations
1	Dakshina Kannada Zilla Panchayat Government Senior Primary School, Bappanadu, Mulki (Left Side Of Madya Building)	22	Dakshina Kannada Zilla Panchayat Senior Primary School, Kadandale Main, (Old Building)
2	Dakshina Kannada Zilla Panchayat Government Senior Primary School, Mulki, (Right Side Of Central Building)	23	Dakshina Kannada Zilla Panchayat Senior Primary School, Kadandale Main, (New Building)
3	Government Pre-Graduation College, Mulki, (Right Side Of New Building)	24	Sant Ignatius Aided Senior Primary School, Paladka
4	Medellin Primary School Mulqui	25	Dakshina Kannada Zilla Panchayat Senior Primary School, Varnabettu, Paladka
5	Dakshina Kannada Zilla Panchayat Government Higher Primary School, Manampadi, Mulki	26	Dakshina Kannada Zilla Panchayat Junior Primary School, Kemaru, Paladka
6	Gram Panchayat Building, Mylottu Atikari Bettu	27	Dakshina Kannada Zilla Panchayat Urdu Senior Primary School, Beluwai, (North Side Room No. 1)
7	Dakshina Kannada Zilla Panchayat Junior Primary School, Mylottu Athikaribettu	28	Dakshina Kannada Zilla Panchayat Urdu Senior Primary School, Beluwai, (North Side Room No. 2)
8	Dakshina Kannada Zilla Panchayat Senior Primary School, Karnire	29	Dakshina Kannada Zilla Panchayat Urdu Senior Primary School, Beluwai (North Side Room No. 3)
9	Dakshina Kannada Zilla Panchayat Junior Primary School, Kavattaru (East Side)	30	Dakshina Kannada Zilla Panchayat Senior Primary School, Beluwai (Room No. 1)
10	Dakshina Kannada Zilla Panchayat Junior Primary School, Kavattaru (West Side)	31	Dakshina Kannada Zilla Panchayat Senior Primary School, Beluwai (Room No. 2)
11	Saint Paul'S Higher Primary School, Balkunje (West Side)	32	Dakshina Kannada Zilla Panchayat Senior Primary School, Beluwai (Room No. 3)
12	Saint Paul'S Higher Primary School, Balkunje (West Side)	33	Dakshina Kannada Zilla Panchayat Model Senior Primary School, Kesarugadde Main (North Side)
13	Dakshina Kannada Zilla Panchayat Senior Primary School, Kollur	34	Dakshina Kannada Zilla Panchayat Model Senior Primary School, Kesarugadde Main (South Side 1St Room)
14	Dakshina Kannada Zilla Panchayat Senior Primary School, Ulepadu	35	Dakshina Kannada Zilla Panchayat Model Senior Primary School, Kesarugadde Main (South Side 1St Room)
15	Little Flower Aided Senior Primary School, Elinje (East Side)	36	Dakshina Kannada Zilla Panchayat Model Senior Primary School, Bannadka, Padumarnadu (East Side)
16	Little Flower Aided Senior Primary School, Elinje (West Side)	37	Dakshina Kannada Zilla Panchayat Model Senior Primary School, Bannadka, Padumarnadu (West)
17	Dakshina Kannada Zilla Panchayat Model Senior Primary School, Kallamundkur (North Side)	38	Gram Panchayat Office, Padumarnadu
18	Dakshina Kannada Zilla Panchayat Model Senior Primary School, Kallamundkur, (South Side)	39	Shri Mahaveera Aided Senior Primary School, Ammanottu, Padumarnadu
19	Little Flower Aided Senior Primary School, Kallamundkur (East Side)	40	Dakshina Kannada Zilla Panchayat Government Senior Primary School, Tandrakere, Moodumarnadu
20	Little Flower Aided Senior Primary School, Kallamundkur (West)	41	Dakshina Kannada Zilla Panchayat Senior Primary School, Moodumarnadu
21	Dakshina Kannada District Panchayat Senior Primary School, Mukkadappu, Kadandale	42	Dakshina Kannada Zilla Panchayat Senior Primary School, Kella Puttige

Contd....

## Polling Station Level Election Results

### Polling Station-wise Votes Secured by Overall Top Five Parties in Moodabidri Assembly in Assembly Election (AE) under Dakshina Kannada Parliamentary Constituency in Karnataka (2023)

Number of Polling Station	Winner - Umanatha Kotian (BJP)	Runner-up - Mithun M Rai (INC)	3rd - Alphonse Franko (SDPI)	4th - Dr. Amarashree Amarnath Shetty (JD(S))	5th - Vijaynath Vittal Shetty (AAP)	NOTA	Other	Total Votes Secured
36	391	266	0	5	0	2	1	665
37	201	260	1	5	2	5	2	476
38	570	458	3	14	2	6	3	1056
39	498	325	5	4	6	1	3	842
40	559	239	2	7	3	5	8	823
41	724	251	1	6	5	6	2	995
42	634	293	1	11	4	8	8	959
43	254	162	0	6	3	1	1	427
44	404	308	1	8	3	4	9	737
45	549	468	2	11	3	6	3	1042
46	460	435	2	13	4	10	6	930
47	691	365	2	9	4	1	4	1076
48	521	317	1	15	1	8	12	875
49	171	220	0	4	2	2	1	400
50	420	515	16	10	7	7	6	981
51	291	476	1	4	4	5	5	786
52	428	541	25	7	10	13	9	1033
53	472	229	2	8	4	8	4	727
54	546	300	0	15	7	4	2	874
55	369	201	1	5	1	4	4	585
56	444	271	1	6	0	3	3	728
57	554	276	2	9	4	10	9	864
58	441	407	12	4	0	4	3	871
59	389	460	9	5	0	3	1	867
60	406	431	2	8	4	12	3	866
61	411	364	11	7	4	7	1	805
62	703	201	2	4	8	2	4	924
63	446	161	4	6	2	4	3	626
64	535	263	5	17	6	6	8	840
65	279	155	1	18	3	8	0	464
66	382	240	7	11	1	1	3	645
67	291	124	0	5	0	4	0	424
68	170	438	33	5	0	2	1	649
69	214	375	25	8	3	5	0	630
70	311	154	1	11	5	3	0	485

Contd....

## Polling Station Level Election Results

### Winner, Runner-up and 3rd Party Position & Winning Margin According to Polling Stations in Moodabidri Assembly in Assembly Election (AE) under Dakshina Kannada Parliamentary Constituency in Karnataka (2023)

Polling Station Number	Winner Party	Winner Votes (%)	Runner-up Party	Runner-up Votes (%)	Winning Margin Votes (%)	Third Party	Third Party Votes (%)	Other Votes (%)
71	INC	510 (60.57)	BJP	304 (36.1)	206 (24.47)	SDPI	13 (1.54)	15 (1.78)
72	INC	372 (53.84)	BJP	290 (41.97)	82 (11.87)	SDPI	6 (0.87)	23 (3.33)
73	BJP	265 (51.16)	INC	239 (46.14)	26 (5.02)	JD(S)	6 (1.16)	8 (1.54)
74	BJP	358 (48.84)	INC	354 (48.29)	4 (0.55)	JD(S)	9 (1.23)	12 (1.64)
75	BJP	399 (49.32)	INC	389 (48.08)	10 (1.24)	JD(S)	10 (1.24)	11 (1.36)
76	INC	432 (60.25)	BJP	265 (36.96)	167 (23.29)	SDPI	7 (0.98)	13 (1.81)
77	INC	295 (53.44)	BJP	237 (42.93)	58 (10.51)	SDPI	7 (1.27)	13 (2.36)
78	BJP	582 (67.13)	INC	242 (27.91)	340 (39.22)	SDPI	21 (2.42)	22 (2.54)
79	INC	551 (50.41)	BJP	411 (37.6)	140 (12.81)	SDPI	114 (10.43)	17 (1.56)
80	BJP	433 (52.23)	INC	376 (45.36)	57 (6.87)	JD(S)	13 (1.57)	7 (0.84)
81	BJP	211 (55.09)	INC	159 (41.51)	52 (13.58)	JD(S)	3 (0.78)	10 (2.61)
82	BJP	583 (75.91)	INC	151 (19.66)	432 (56.25)	JD(S)	11 (1.43)	23 (2.99)
83	INC	373 (53.13)	BJP	312 (44.44)	61 (8.69)	SDPI	6 (0.85)	11 (1.57)
84	BJP	330 (69.33)	INC	140 (29.41)	190 (39.92)	JD(S)	3 (0.63)	3 (0.63)
85	BJP	454 (59.66)	INC	285 (37.45)	169 (22.21)	AAP	4 (0.53)	18 (2.37)
86	BJP	725 (68.46)	INC	290 (27.38)	435 (41.08)	JD(S)	20 (1.89)	24 (2.27)
87	INC	420 (68.63)	BJP	108 (17.65)	312 (50.98)	SDPI	41 (6.7)	43 (7.03)
88	BJP	444 (65.2)	INC	212 (31.13)	232 (34.07)	SDPI	10 (1.47)	15 (2.2)
89	BJP	486 (77.64)	INC	135 (21.57)	351 (56.07)	JD(S)	1 (0.16)	4 (0.64)
90	BJP	400 (73.39)	INC	126 (23.12)	274 (50.27)	JD(S)	8 (1.47)	11 (2.02)
91	BJP	470 (74.72)	INC	136 (21.62)	334 (53.1)	JD(S)	10 (1.59)	13 (2.07)
92	BJP	373 (57.65)	INC	242 (37.4)	131 (20.25)	JD(S)	7 (1.08)	25 (3.86)
93	INC	117 (70.91)	BJP	47 (28.48)	70 (42.43)	AAP	1 (0.61)	0 (0)
94	INC	418 (56.79)	BJP	311 (42.26)	107 (14.53)	JD(S)	1 (0.14)	6 (0.82)
95	BJP	364 (58.15)	INC	239 (38.18)	125 (19.97)	JD(S)	8 (1.28)	15 (2.4)
96	BJP	493 (62.48)	INC	269 (34.09)	224 (28.39)	AAP	10 (1.27)	17 (2.15)
97	BJP	574 (71.3)	INC	193 (23.98)	381 (47.32)	JD(S)	13 (1.61)	25 (3.11)
98	INC	141 (50.72)	BJP	130 (46.76)	11 (3.96)	JD(S)	2 (0.72)	5 (1.8)
99	BJP	436 (52.15)	INC	373 (44.62)	63 (7.53)	AAP	7 (0.84)	20 (2.39)
100	BJP	469 (60.52)	INC	292 (37.68)	177 (22.84)	SDPI	3 (0.39)	11 (1.42)
101	BJP	379 (69.41)	INC	155 (28.39)	224 (41.02)	JD(S)	4 (0.73)	8 (1.47)
102	BJP	462 (72.99)	INC	166 (26.22)	296 (46.77)	SDPI	1 (0.16)	4 (0.63)
103	INC	463 (70.69)	BJP	177 (27.02)	286 (43.67)	JD(S)	6 (0.92)	9 (1.37)
104	BJP	362 (52.54)	INC	308 (44.7)	54 (7.84)	AAP	7 (1.02)	12 (1.74)
105	INC	434 (46.62)	BJP	370 (39.74)	64 (6.88)	SDPI	99 (10.63)	28 (3.01)

Contd....

## Socio-Economic Amenities - Rural

### Access to Education Facilities

Particulars	Number of Village (% of Population)				
	Available	Not Available	If Not Available (Distance of Nearest Facility)		
			A	B	C
Govt. Primary School	51 (93)	5 (7)	1 (1)	0 (0)	0 (0)
Private Primary School	21 (48)	35 (52)	0 (0)	0 (0)	0 (0)
Govt. Middle School	39 (79)	17 (21)	9 (11)	1 (2)	0 (0)
Private Middle School	17 (43)	39 (57)	3 (2)	0 (0)	0 (0)
Govt. Secondary School	21 (46)	35 (54)	10 (15)	2 (5)	0 (0)
Private Secondary School	12 (27)	44 (73)	13 (14)	1 (2)	0 (0)
Govt. Senior Secondary School	5 (12)	51 (88)	5 (8)	6 (7)	0 (0)
Private Senior Secondary School	1 (2)	55 (98)	14 (21)	18 (38)	7 (12)
Govt. Arts and Science Degree College	2 (5)	54 (95)	5 (7)	5 (6)	0 (0)
Private Arts and Science Degree College	1 (2)	55 (98)	5 (11)	30 (56)	8 (14)
Govt. Engineering College	0 (0)	56 (100)	0 (0)	2 (2)	42 (81)
Private Engineering College	0 (0)	56 (100)	0 (0)	3 (6)	9 (11)
Govt. Medicine College	0 (0)	56 (100)	0 (0)	0 (0)	0 (0)
Private Medicine College	0 (0)	56 (100)	13 (20)	3 (14)	40 (65)
Govt. Management Institute	0 (0)	56 (100)	2 (4)	13 (35)	35 (56)
Private Management Institute	0 (0)	56 (100)	0 (0)	0 (0)	6 (6)
Govt. Polytechnic	0 (0)	56 (100)	2 (4)	13 (36)	41 (61)
Private Polytechnic	0 (0)	56 (100)	0 (0)	0 (0)	0 (0)
Govt. Vocational Training School/ITI	1 (3)	55 (97)	4 (14)	15 (32)	12 (20)
Private Vocational Training School/ITI	2 (5)	54 (95)	7 (11)	9 (11)	7 (6)
Govt. Non Formal Training Centre	0 (0)	56 (100)	2 (4)	27 (57)	27 (39)
Private Non Formal Training Centre	0 (0)	56 (100)	0 (0)	0 (0)	0 (0)
Govt. School For Disabled	0 (0)	56 (100)	0 (0)	0 (0)	0 (0)
Private School For Disabled	0 (0)	56 (100)	5 (9)	29 (45)	22 (46)
Government Others	0 (0)	56 (100)	0 (0)	1 (3)	5 (7)
Private Others	0 (0)	56 (100)	0 (0)	0 (0)	0 (0)

Note : Distance A : Less than 5 km; B : Between 5-10 km; C : 10+ km.; Source : Data Analysis is based on 2011 Census.

## DISCLAIMER

The Terms of Use and Disclaimer of Datanet India Private Limited (hereinafter referred to as "Datanet") for use of this analysis report of **Moodabidri Assembly Constituency (Moodabidri Vidhan Sabha)** :-

1. **Assembly Factbook™** is a Registered Trade Mark owned by Datanet.
2. All the maps are sketched and graphical representation only and have not been drawn to the scale and also not to represent the actual geographical area or boundary of the unit.
3. The data for the aforesaid analysis is based on authentic sources and has been culled from the various publications of Census, CSO and NSSO for district and block level data, various central and state government departments, Central & State Elections Commissions and the concerned Returning Officers' releases, Electoral Rolls, Election results and allied publications, internal assessment, surveys, estimates and analysis. Therefore, certain adjustment of data at micro level may have been done to arrive closer to the macro data.
4. Data have been provided on an "As Is" and "As AVAILABLE" basis
5. The colours shown in the maps or diagram and charts of a particular party, alliance or AC are indicative and do not represent them.
6. This publication which includes maps, sheets, graphs and data would be the property under copyright of Datanet only. The user may use these for its internal study, analysis and research purposes. It's public display, re-selling or any commercial uses by the user are not allowed.
7. Datanet has taken due care and caution in compilation and processing of data and allied information, but does not guarantee the accuracy, adequacy or completeness of any information/analysis and will be not responsible for any errors or omissions or for the results obtained from the use of such information/analysis.
8. All the contents for the publication have been culled from various authentic sources and Datanet reasonably believes such sources to be reliable, but does not make any representations, express or implied as to the accuracy or fitness of use of such information. The information or contents of the information/analysis do not constitute advice and should not be relied upon in making (or refraining from making) any decision. Any reliance placed upon the information provided by Datanet is the sole responsibility and strictly at the user's risk.
9. In no event will Datanet be liable for any damages (including, without limitation, damages for loss of business projects, or loss of profits) arising in contract, tort or otherwise from the use of or inability to use any of its contents, or from any action taken (or refrained from being taken) as a result of using the analysis or any of its contents. Datanet its directors, owners, editors, officials, employees, distributor and agents or any associate will not be liable for any errors in the information contained or any consequences arising from the use of the contents of the provided information/analysis.
10. If any provision of these terms and conditions is held invalid or illegal or unenforceable for any reason by any court of competent jurisdiction, such provision shall be severed and the remainder of provisions of the terms and conditions shall continue in full force and effect as if the Term of Use had been executed with the invalid, illegal or unenforceable provision eliminated.
11. If there are any discrepancies in the information provided, please bring it to attention of Datanet for suitable rectification measures.

**Buy Online This Complete Book At  
Datanet India eBooks Store**

[www.indiastatpublications.com](http://www.indiastatpublications.com)

or go directly at

[http://www.indiastatpublications.com/  
Assembly\\_factbook/Karnataka/Dakshina\\_Kannada/  
Moodabidri](http://www.indiastatpublications.com/Assembly_factbook/Karnataka/Dakshina_Kannada/Moodabidri)



 **indiastat**elections

