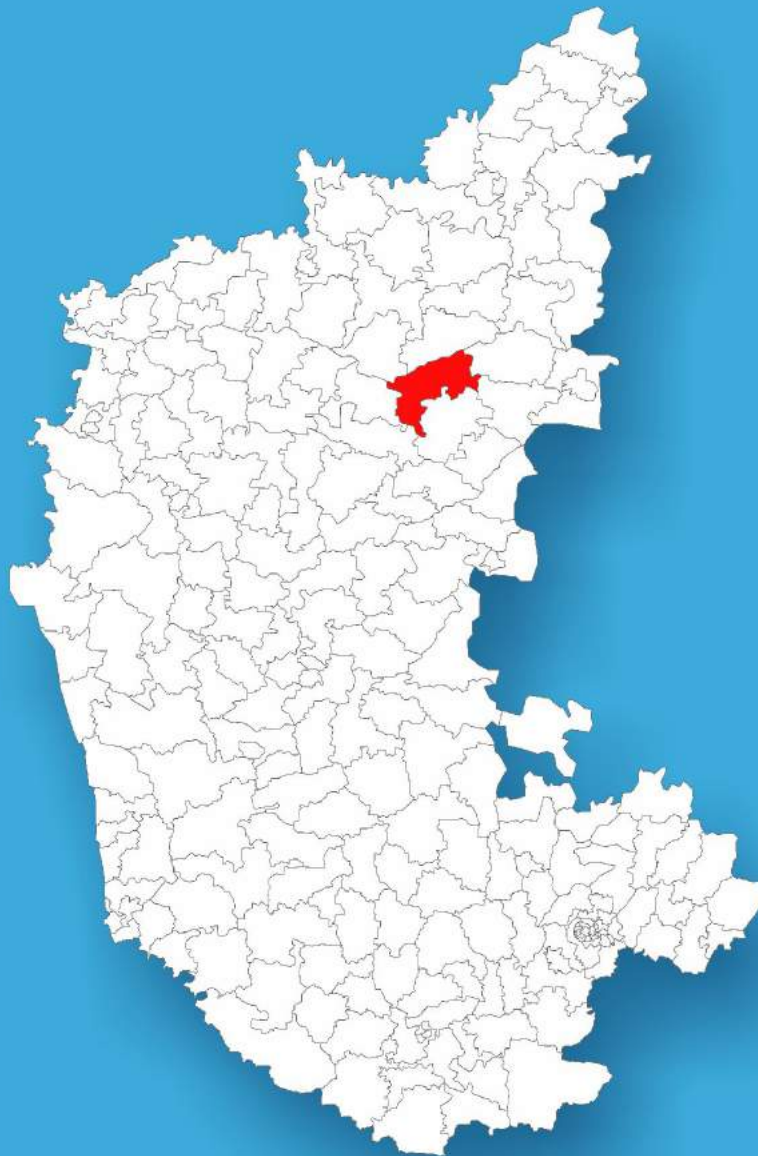




Karnataka

Assembly Factbook™

Lingsugur Assembly Constituency



Key Electoral Data of Lingsugur
Assembly Constituency (Vidhan Sabha)

Karnataka

Assembly Factbook™

Lingsugur Assembly Constituency



Lingsugur Vidhan Sabha

Editor & Director

Dr. R.K. Thukral

Research Editor

Dr. Shafeeq Rahman

**Compiled, Researched and Published by
Datanet India Pvt. Ltd.**

D-100, 1st Floor,

Okhla Industrial Area, Phase-I,
New Delhi- 110020.

Ph.: 91-11- 43580781-84

Email : support@indiastatpublications.com

Website : www.indiastatelections.com

Online Book Store :

www.indiastatpublications.com

Report No. : AFB/KA-057-0123

ISBN : 978-93-87130-76-0

First Edition : January, 2018

Sixth Updated Edition : January, 2023

Price : Rs. 11500/-

US\$ 310/-

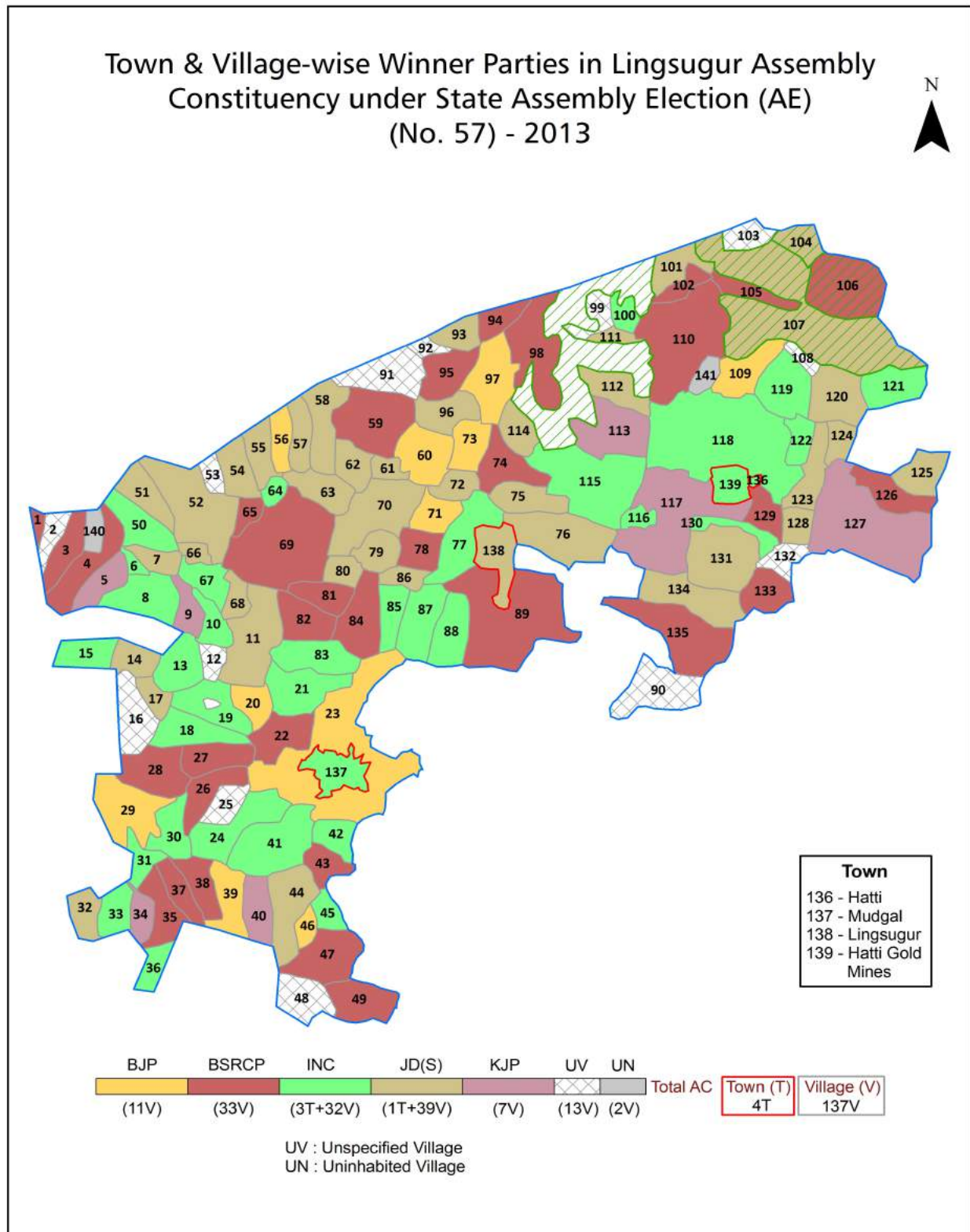
© Datanet India Pvt. Ltd.

All rights reserved. No part of this book may be reproduced, stored in a retrieval system or transmitted in any form or by any means, mechanical photocopying, photographing, scanning, recording or otherwise without the prior written permission of the publisher. Please refer to Disclaimer at page no. 197 for the use of this publication.

Printed in India

No.	Particulars	Page No.
	Introduction	
1	Assembly Constituency - (Vidhan Sabha) at a Glance Features of Assembly as per Delimitation Commission of India (2008)	1-2
	Location and Political Maps	
2	Location Map Boundaries of Assembly Constituency - (Vidhan Sabha) in District Boundaries of Assembly Constituency under Parliamentary Constituency - (Lok Sabha) Town & Village-wise Winner Parties- 2019, 2018, 2014, 2013 and 2009	3-10
	Administrative Setup (2011)	
3	District Sub-district Towns Villages Inhabited Villages Uninhabited Villages Village Panchayat Intermediate Panchayat	11-18
	Demographics (2011)	
4	Population Households Rural/Urban Population Towns and Villages by Population Size Sex Ratio (Total & 0-6 Years) Religious Population Social Population Literacy Rate	19-20
	Electoral Features	
5	Important Dates of Last Elections Held Electors by Gender Service Electors Voters Voters Turnout Polling Stations & Average Number of Electors per Polling Station Electors by Age Group Present Elected Representatives	21-26
	Historical Summary Election Results	
6	Vote Share of Major Parties Winning Margin (Number & Percentage) Polarity of Parties Summary Result of Assembly Segment of Parliamentary Elections 2019, 2014, 2009, 2004, 1999 Summary Result of Assembly Elections 2018, 2013, 2008, 2004, 1999, 1994, 1989, 1985, 1983, 1978, 1972, 1967, 1962 and 1957	27-49
	Polling Station Level Election Results	
7	Name and Number of Polling Station 2019, 2018, 2014, 2013 and 2009 Polling Station-wise Electors, Voters & Voters Turnout 2019, 2018, 2014, 2013 and 2009 Polling Station wise Elections Results 2019, 2018, 2014, 2013 and 2009	50-177
	Share of Assembly Constituency	
8	Share of Assembly Constituency - (Vidhan Sabha) in State, District and Parliamentary Constituency - (Lok Sabha)	178
	Socio-Economic Amenities (2011)	
9	Access to Administrative Units Agricultural, Manufacturing and Industrial Commodities Demographic Indicators Education Health & Manpower Drinking Water Supply Sanitation Entertainment and Recreations Infrastructure Power Food Allocation Distribution and Marketing of Agriculture Commodities Infrastructure Transport and Road Infrastructure Communication Banking and Financial Services Land Use Irrigation Source	180-194
10	Abbreviation & Sources	195-196
11	Disclaimer	197

Location & Political Map



Administrative Setup

List of Village Panchayat & Intermediate Panchayat (Block) Name - 2011

Village Name	Village Panchayat Name	Intermediate Panchayat Name
Honnahalli	Honnalli	Lingsugur
Hosagudda	Goudur	Lingsugur
Hosur	Anwari	Lingsugur
Hunkunti	Mavinabhai	Lingsugur
Hunoor	Hunoor	Lingsugur
Jaldurga	Guntagola	Lingsugur
Jalibench	Kalapur	Lingsugur
Jantapur	Bannigol	Lingsugur
Jawoor(Big)	Rodalabanda (Ukp)	Lingsugur
Jawoor(Small)	Rodalabanda (Ukp)	Lingsugur
Julgudda	Narakaladinni	Lingsugur
Jungi-Rampur	Rodalabanda (Ukp)	Lingsugur
Adapur	Bannigol	Lingsugur
Adavibhavi	Eachanhal	Lingsugur
Advibhavi (Mudgal)	Kachapur	Lingsugur
Aidanhal	Kalapur	Lingsugur
Kachapur	Kachapur	Lingsugur
Kadadargaddi	Guntagola	Lingsugur
Aidbhavi	Devarabhupur	Lingsugur
Amdihal	Amdihal	Lingsugur
Kaddona	Roudala Banda	Lingsugur
Kalapur	Kalapur	Lingsugur
Anahosur	Anahosur	Lingsugur
Ankanhal	Nagaral	Lingsugur
Kallilingsugur	Mavinabhai	Lingsugur
Kamaldinni	Narakaladinni	Lingsugur
Anwari	Anwari	Lingsugur
Arya-Bhogapur	Hunoor	Lingsugur
Kannapur Hatti	Uppar Nandihal	Lingsugur

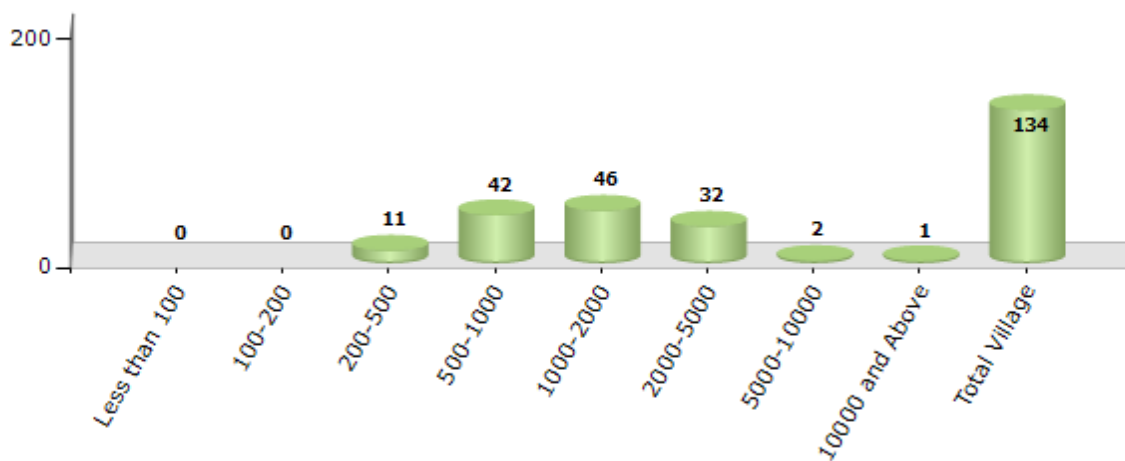
Contd....

Demographic

Number of Villages by Population Size - 2011

Less than 100	100-200	200-500	500-1000	1000-2000	2000-5000	5000-10000	10000 and Above	Total Village
0	0	11	42	46	32	2	1	134

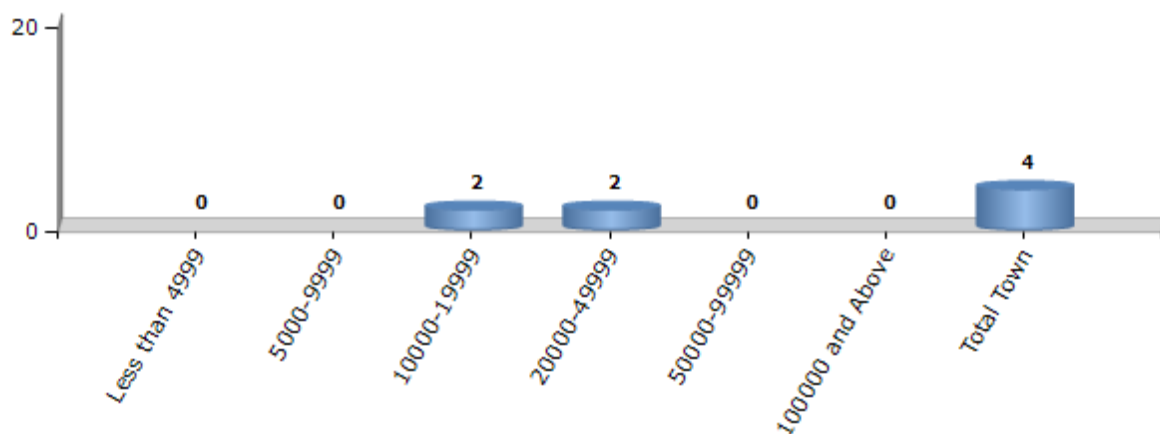
Number of Villages by Population Size - 2011



Number of Towns by Population Size - 2011

Less than 4999	5000-9999	10000-19999	20000-49999	50000-99999	100000 and Above	Total Town
0	0	2	2	0	0	4

Number of Towns by Population Size - 2011

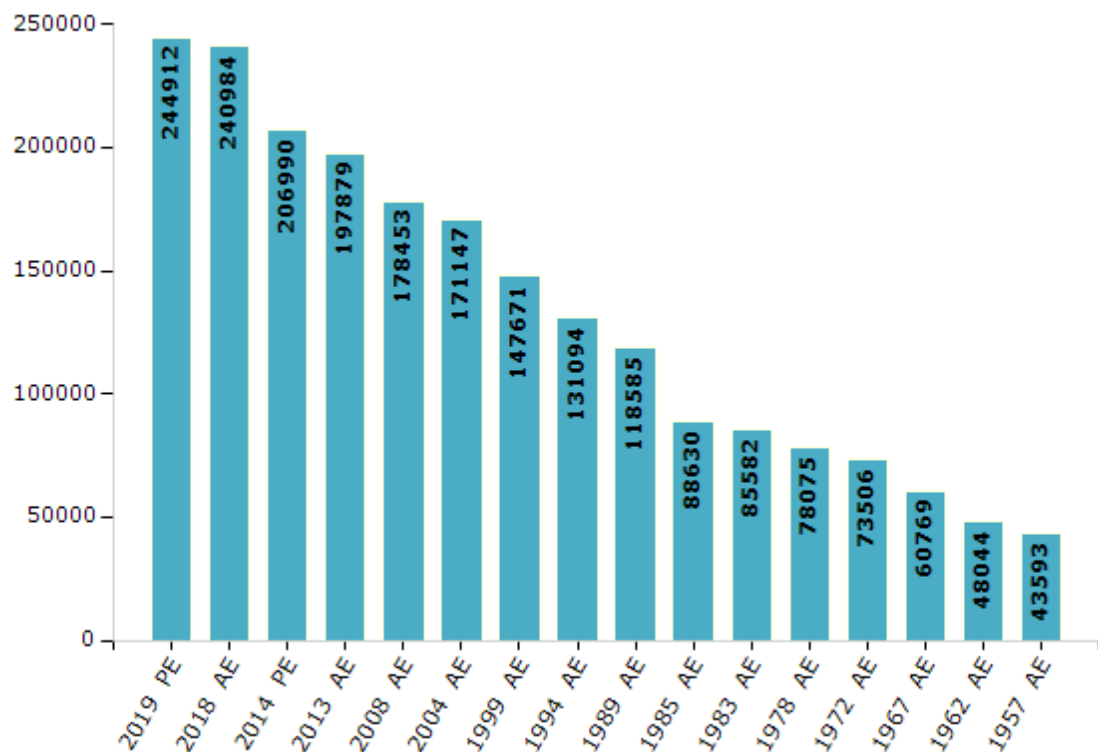


Electoral Features

Electors by Male & Female

Year	Male	Female	Others	Total	Year	Male	Female	Others	Total
2019 PE	121718	123185	9	244912	1994 AE	64961	66133	-	131094
2018 AE	120143	120831	10	240984	1989 AE	58776	59809	-	118585
2014 PE	105211	101772	7	206990	1985 AE	43090	45540	-	88630
2013 AE	100919	96951	9	197879	1983 AE	41454	44128	-	85582
2009 PE	-	-	-	-	1978 AE	37805	40270	-	78075
2008 AE	89088	89365	-	178453	1972 AE	36723	36783	-	73506
2004 PE	-	-	-	-	1967 AE	-	-	-	60769
2004 AE	85586	85561	-	171147	1962 AE	-	-	-	48044
1999 PE	-	-	-	-	1957 AE	-	-	-	43593
1999 AE	74167	73504	-	147671					

Number of Electors

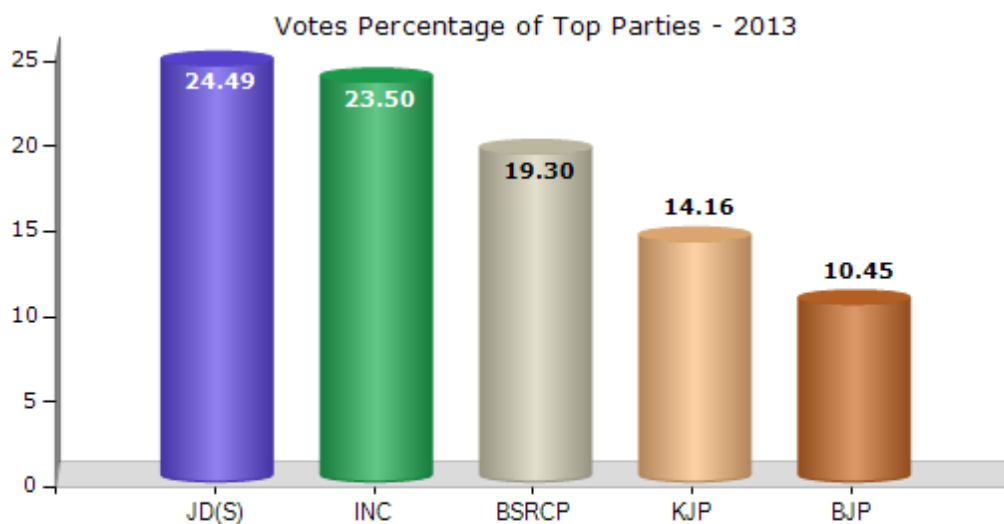


Note : AE : Assembly Election, PE : Assembly Segment of Parliamentary Election

Historical Summary Election Results

Summary Result of Assembly Election - 2013

Candidate Name	Party	Votes	Votes %
Manappa D.Vajjal	JD(S)	31737	24.49
D.S.Hoolageri	INC	30451	23.5
Siddu Y.Bandi	BSRCP	25005	19.3
H.B.Murari	KJP	18347	14.16
T.R.Naik	BJP	13545	10.45
Dr.Ranganath	IND	2737	2.11
Comrade Chinnappa Kotriki	CPIM	1232	0.95
Yashodhar Bhajantri	IND	1171	0.9
Nandappa P Bombaykar	IND	1101	0.85
Shekharappa Shivangi	JD(U)	969	0.75
Subhas Y Chawan	KRRS	940	0.73
Balarama	IND	868	0.67
Pampapathi Gudadur	BSP	757	0.58
Danamma Shivashankarappa	IND	720	0.56



Polling Station Level Election Results

Number and Name of Polling Stations (PS) (2018)

Number of Polling Stations	Name of Polling Stations	Number of Polling Stations	Name of Polling Stations
1	Govt. Higher Primary School, Paidoddi East Wing	21	Govt. Model Higher Primary School, (East Wing) Gurugunta
2	Govt. Higher Primary School, Paidoddi	22	Govt. Model Higher Primary School, (West Wing) Gurugunta
3	Govt. Higher Primary School, Rayadurga	23	Govt. Lower Primary School, Building (East Wing) Bandebhavi
4	Govt. Higher Primary School, Tanamkal	24	Govt. Lower Primary School, Building West Wing Bandebhavi
5	Govt. Lower Primary School, Golapalli	25	Govt. Higher Primary School, East Wing Guntagol
6	Govt. Higher Primary School, (East Wing) Yarajanti	26	Govt. Higher Primary School, West Wing Guntagol
7	Govt. Higher Primary School, (West Wing) Yarajanti	27	Govt. Higher Primary School, Building Parampur
8	Govt. Higher Primary School, Building (West) Yarajanthi	28	Gram Panchayat Office Building Devarbhupur
9	Govt. Higher Primary School, (West Wing) Aidabhavi-1	29	Govt Higher Primary School, East Wing Devarbhupur
10	Govt. Higher Primary School, Aidabhavi-2	30	Govt. Higher Primary School, Building Dewarabhupur-1
11	Gram Panchayat Office (West Room) Gurugunta-1	31	Govt. Higher Primary School, Building Benchaldoddi
12	Govt. Higher Primary School, New Building Gurugunta-2	32	Govt. Lower Primary School, Building Benchaldoddi Thanda
13	Govt. Girls Higher Primary School, Building (West) Gurugunta	33	Govt. Higher Primary School, Building (South Wing) Goudur
14	Govt. Girls Higher Primary School, Building (East) Gurugunta	34	Govt. Higher Primary School, Building (North Wing) Goudur
15	Govt. Girls Higher Primary School, Building (East) Gurugunta - 4	35	Govt. Higher Primary School, Building (North Wing) Goudar-2
15A	Govt. Girls Higher Primary School, Building (East) Gurugunta - 4	36	Gram Panchayat Building Goudar-3
16	Govt. PU College, High School, Building West Gurugunta-5	37	Govt. Lower Primary School, Building Machanur
17	Govt. PU College, High School, Building East Gurugunta - 6	37A	Govt. Lower Primary School, Building Machanur
18	Govt. Model Higher Primary School, West Gurugunta	38	Govt. Higher Primary School, Building East Wing Yalagatta-1
19	Govt. Model Higher Primary School, East Wing Gurugunta	39	Govt. Higher Primary School, Building (West Wing) Yalagatta-2
20	Govt. Urdu Higher Primary School, Gurugunta-8	40	Govt. Lower Primary School, Building Kadadaragaddi

Contd....

Polling Station Level Election Results

Polling Station-wise Votes Secured by Overall Top Five Parties in Lingsugur Assembly in Assembly Election (AE) under Raichur Parliamentary Constituency in Karnataka (2018)

Number of Polling Station	Winner - D. S. Hoolageri (INC)	Runner-up - Bandi.Siddu (JD(S))	3rd - Manappa D Vajjal (BJP)	4th - R Manasayya (CPIM)	5th - A Balaswamy Kodli (IND)	NOTA	Other	Total Votes Secured
35	139	189	168	71	8	6	52	633
36	133	275	62	40	14	5	77	606
37	144	130	118	1	3	1	7	404
37A	188	108	112	9	11	15	46	489
38	282	254	116	29	4	12	44	741
39	335	228	251	4	2	9	28	857
40	62	72	104	3	9	17	50	317
41	76	172	171	11	5	8	60	503
42	184	241	214	4	4	19	56	722
43	90	93	118	4	0	2	12	319
44	70	410	65	19	3	10	65	642
45	272	94	158	11	4	18	37	594
46	156	94	162	3	5	28	33	481
47	302	102	378	9	6	12	55	864
48	275	180	283	15	9	14	51	827
49	168	159	260	14	40	3	27	671
50	113	136	194	9	51	6	15	524
51	206	171	216	36	22	6	45	702
52	349	249	163	8	10	10	30	819
53	225	65	191	3	4	6	16	510
54	345	60	122	5	1	8	22	563
55	94	324	93	11	15	12	71	620
56	112	309	208	4	3	4	17	657
57	91	302	135	2	0	3	15	548
58	121	209	79	3	2	3	9	426
59	205	179	66	0	0	3	16	469
60	301	180	50	5	0	5	29	570
61	174	109	47	2	101	2	24	459
62	131	110	24	6	220	1	16	508
63	268	243	159	12	10	6	43	741
64	175	166	137	6	1	6	18	509
65	187	124	152	9	2	9	20	503
66	402	221	123	6	0	4	15	771
67	463	193	87	0	2	8	13	766
68	308	117	39	8	19	5	11	507

Contd....

Polling Station Level Election Results

Winner, Runner-up and 3rd Party Position & Winning Margin According to Polling Stations in Lingsugur Assembly in Assembly Election (AE) under Raichur Parliamentary Constituency in Karnataka (2018)

Polling Station Number	Winner Party	Winner Votes (%)	Runner-up Party	Runner-up Votes (%)	Winning Margin Votes (%)	Third Party	Third Party Votes (%)	Other Votes (%)
69	INC	281 (61.09)	JD(S)	105 (22.83)	176 (38.26)	BJP	35 (7.61)	39 (8.48)
70	INC	265 (44.17)	JD(S)	180 (30)	85 (14.17)	BJP	91 (15.17)	64 (10.67)
71	INC	231 (42.23)	JD(S)	200 (36.56)	31 (5.67)	BJP	63 (11.52)	53 (9.69)
72	INC	140 (43.08)	BJP	121 (37.23)	19 (5.85)	JD(S)	59 (18.15)	5 (1.54)
73	INC	175 (46.92)	JD(S)	113 (30.29)	62 (16.63)	BJP	55 (14.75)	30 (8.04)
74	INC	184 (53.49)	BJP	80 (23.26)	104 (30.23)	JD(S)	65 (18.9)	15 (4.36)
75	INC	160 (39.31)	JD(S)	105 (25.8)	55 (13.51)	BJP	105 (25.8)	37 (9.09)
76	INC	128 (38.55)	JD(S)	96 (28.92)	32 (9.63)	BJP	95 (28.61)	13 (3.92)
77	INC	143 (37.24)	BJP	130 (33.85)	13 (3.39)	JD(S)	100 (26.04)	11 (2.86)
78	BJP	175 (37.39)	INC	155 (33.12)	20 (4.27)	JD(S)	102 (21.79)	36 (7.69)
79	INC	157 (37.74)	BJP	142 (34.13)	15 (3.61)	JD(S)	76 (18.27)	41 (9.86)
80	JD(S)	135 (33.42)	BJP	121 (29.95)	14 (3.47)	INC	109 (26.98)	39 (9.65)
81	INC	169 (34.07)	BJP	156 (31.45)	13 (2.62)	JD(S)	131 (26.41)	40 (8.06)
82	INC	239 (50.74)	JD(S)	106 (22.51)	133 (28.23)	BJP	94 (19.96)	32 (6.79)
83	INC	182 (49.06)	JD(S)	117 (31.54)	65 (17.52)	BJP	51 (13.75)	21 (5.66)
84	BJP	93 (41.52)	INC	69 (30.8)	24 (10.72)	CPIM	28 (12.5)	34 (15.18)
85	BJP	124 (36.15)	JD(S)	101 (29.45)	23 (6.7)	INC	84 (24.49)	34 (9.91)
86	INC	282 (42.66)	JD(S)	191 (28.9)	91 (13.76)	BJP	139 (21.03)	49 (7.41)
87	JD(S)	337 (45.79)	INC	247 (33.56)	90 (12.23)	BJP	99 (13.45)	53 (7.2)
88	INC	205 (38.68)	BJP	169 (31.89)	36 (6.79)	JD(S)	112 (21.13)	44 (8.3)
89	JD(S)	319 (43.52)	BJP	211 (28.79)	108 (14.73)	INC	161 (21.96)	42 (5.73)
90	JD(S)	279 (43.46)	BJP	213 (33.18)	66 (10.28)	INC	116 (18.07)	34 (5.3)
91	BJP	192 (36.57)	INC	156 (29.71)	36 (6.86)	JD(S)	150 (28.57)	27 (5.14)
92	BJP	217 (35.99)	INC	177 (29.35)	40 (6.64)	JD(S)	170 (28.19)	39 (6.47)
93	BJP	235 (38.59)	JD(S)	224 (36.78)	11 (1.81)	INC	114 (18.72)	36 (5.91)
94	BJP	353 (50.21)	JD(S)	196 (27.88)	157 (22.33)	INC	67 (9.53)	87 (12.38)
95	JD(S)	529 (58.58)	INC	166 (18.38)	363 (40.2)	BJP	131 (14.51)	77 (8.53)
96	JD(S)	374 (47.46)	BJP	218 (27.66)	156 (19.8)	INC	92 (11.68)	104 (13.2)
97	BJP	296 (34.46)	INC	267 (31.08)	29 (3.38)	JD(S)	230 (26.78)	66 (7.68)
98	BJP	278 (53.26)	INC	131 (25.1)	147 (28.16)	JD(S)	53 (10.15)	60 (11.49)
99	INC	516 (49.57)	JD(S)	230 (22.09)	286 (27.48)	BJP	170 (16.33)	125 (12.01)
100	BJP	376 (52.51)	INC	196 (27.37)	180 (25.14)	JD(S)	125 (17.46)	19 (2.65)
101	INC	381 (44.67)	BJP	304 (35.64)	77 (9.03)	JD(S)	102 (11.96)	66 (7.74)
102	INC	250 (40.19)	JD(S)	170 (27.33)	80 (12.86)	BJP	166 (26.69)	36 (5.79)
103	INC	255 (38.29)	JD(S)	177 (26.58)	78 (11.71)	BJP	107 (16.07)	127 (19.07)

Contd....

Socio-Economic Amenities - Rural

Access to Education Facilities

Particulars	Number of Village (% of Population)				
	Available	Not Available	If Not Available (Distance of Nearest Facility)		
			A	B	C
Govt. Primary School	133 (99)	1 (1)	1 (1)	0 (0)	0 (0)
Private Primary School	10 (18)	124 (82)	0 (0)	0 (0)	0 (0)
Govt. Middle School	104 (89)	30 (11)	23 (9)	6 (2)	0 (0)
Private Middle School	6 (13)	128 (87)	0 (0)	0 (0)	0 (0)
Govt. Secondary School	27 (36)	107 (64)	49 (26)	45 (28)	7 (6)
Private Secondary School	2 (2)	132 (98)	3 (2)	1 (0)	0 (0)
Govt. Senior Secondary School	5 (3)	129 (97)	20 (19)	61 (47)	25 (15)
Private Senior Secondary School	2 (3)	132 (97)	4 (2)	14 (8)	4 (4)
Govt. Arts and Science Degree College	0 (0)	134 (100)	7 (8)	33 (26)	93 (66)
Private Arts and Science Degree College	0 (0)	134 (100)	0 (0)	1 (0)	0 (0)
Govt. Engineering College	0 (0)	134 (100)	0 (0)	0 (0)	134 (100)
Private Engineering College	0 (0)	134 (100)	0 (0)	0 (0)	0 (0)
Govt. Medicine College	0 (0)	134 (100)	7 (5)	8 (5)	119 (90)
Private Medicine College	0 (0)	134 (100)	0 (0)	0 (0)	0 (0)
Govt. Management Institute	0 (0)	134 (100)	1 (0)	9 (8)	97 (76)
Private Management Institute	0 (0)	134 (100)	0 (0)	0 (0)	3 (1)
Govt. Polytechnic	0 (0)	134 (100)	4 (3)	30 (24)	100 (73)
Private Polytechnic	0 (0)	134 (100)	0 (0)	0 (0)	0 (0)
Govt. Vocational Training School/ITI	1 (0)	133 (100)	6 (6)	33 (25)	94 (68)
Private Vocational Training School/ITI	0 (0)	134 (100)	0 (0)	0 (0)	0 (0)
Govt. Non Formal Training Centre	0 (0)	134 (100)	4 (3)	30 (24)	100 (73)
Private Non Formal Training Centre	0 (0)	134 (100)	0 (0)	0 (0)	0 (0)
Govt. School For Disabled	0 (0)	134 (100)	3 (1)	16 (13)	115 (85)
Private School For Disabled	0 (0)	134 (100)	0 (0)	0 (0)	0 (0)
Government Others	1 (6)	133 (94)	0 (0)	0 (0)	131 (93)
Private Others	0 (0)	134 (100)	0 (0)	0 (0)	2 (1)

Note : Distance A : Less than 5 km; B : Between 5-10 km; C : 10+ km.; Source : Data Analysis is based on 2011 Census.

DISCLAIMER

The Terms of Use and Disclaimer of Datanet India Private Limited (hereinafter referred to as "Datanet") for use of this analysis report of **Lingsugur Assembly Constituency (Lingsugur Vidhan Sabha)** :-

1. **Assembly Factbook™** is a Registered Trade Mark owned by Datanet.
2. All the maps are sketched and graphical representation only and have not been drawn to the scale and also not to represent the actual geographical area or boundary of the unit.
3. The data for the aforesaid analysis is based on authentic sources and has been culled from the various publications of Census, CSO and NSSO for district and block level data, various central and state government departments, Central & State Elections Commissions and the concerned Returning Officers' releases, Electoral Rolls, Election results and allied publications, internal assessment, surveys, estimates and analysis. Therefore, certain adjustment of data at micro level may have been done to arrive closer to the macro data.
4. Data have been provided on an "As Is" and "As AVAILABLE" basis
5. The colours shown in the maps or diagram and charts of a particular party, alliance or AC are indicative and do not represent them.
6. This publication which includes maps, sheets, graphs and data would be the property under copyright of Datanet only. The user may use these for its internal study, analysis and research purposes. It's public display, re-selling or any commercial uses by the user are not allowed.
7. Datanet has taken due care and caution in compilation and processing of data and allied information, but does not guarantee the accuracy, adequacy or completeness of any information/analysis and will be not responsible for any errors or omissions or for the results obtained from the use of such information/analysis.
8. All the contents for the publication have been culled from various authentic sources and Datanet reasonably believes such sources to be reliable, but does not make any representations, express or implied as to the accuracy or fitness of use of such information. The information or contents of the information/analysis do not constitute advice and should not be relied upon in making (or refraining from making) any decision. Any reliance placed upon the information provided by Datanet is the sole responsibility and strictly at the user's risk.
9. In no event will Datanet be liable for any damages (including, without limitation, damages for loss of business projects, or loss of profits) arising in contract, tort or otherwise from the use of or inability to use any of its contents, or from any action taken (or refrained from being taken) as a result of using the analysis or any of its contents. Datanet its directors, owners, editors, officials, employees, distributor and agents or any associate will not be liable for any errors in the information contained or any consequences arising from the use of the contents of the provided information/analysis.
10. If any provision of these terms and conditions is held invalid or illegal or unenforceable for any reason by any court of competent jurisdiction, such provision shall be severed and the remainder of provisions of the terms and conditions shall continue in full force and effect as if the Term of Use had been executed with the invalid, illegal or unenforceable provision eliminated.
11. If there are any discrepancies in the information provided, please bring it to attention of Datanet for suitable rectification measures.

**Buy Online This Complete Book At
Datanet India eBooks Store**

www.indiastatpublications.com

or go directly at

**[http://www.indiastatpublications.com/
Assembly_factbook/Karnataka/Raichur/ Lingsugur](http://www.indiastatpublications.com/Assembly_factbook/Karnataka/Raichur/Lingsugur)**

 **india**stat**elections**

ISBN : 978-93-87130-76-0



9 789387 130760