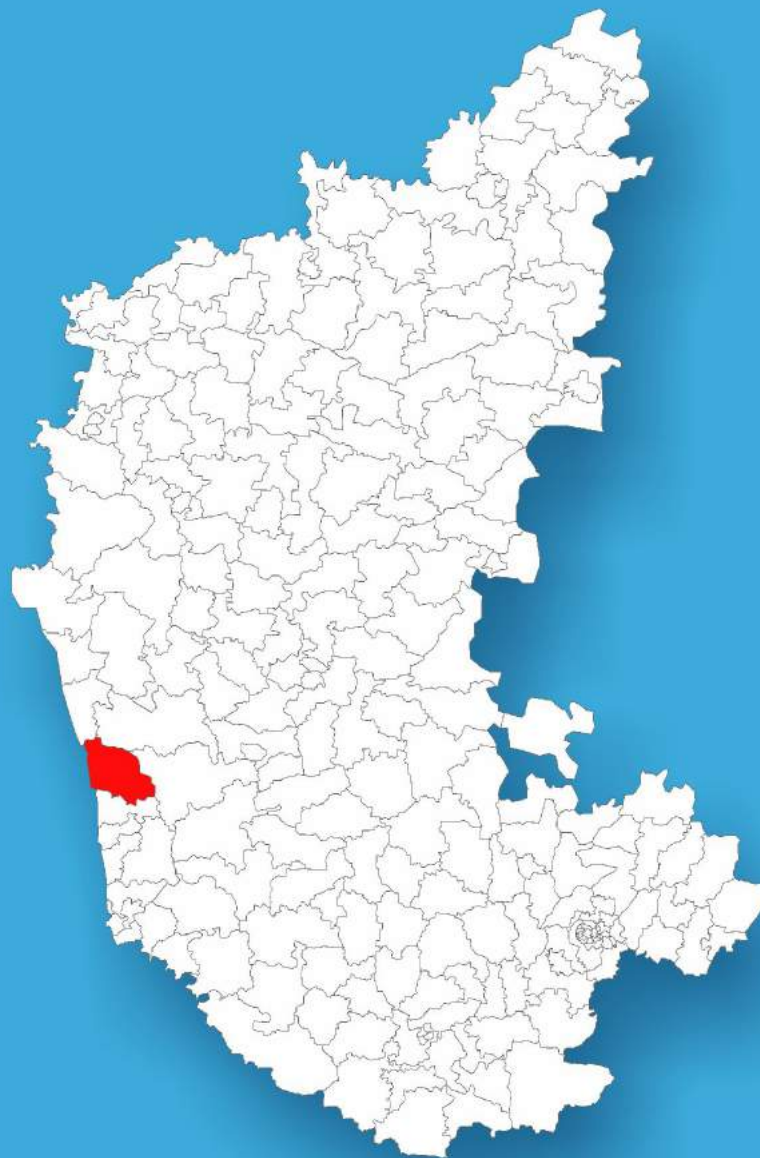




Karnataka

# Assembly Factbook™

Byndoor Assembly Constituency



Key Electoral Data of Byndoor  
Assembly Constituency (Vidhan Sabha)

Karnataka

# **Assembly Factbook™**

Byndoor Assembly Constituency



Byndoor Vidhan Sabha

**Editor & Director**

Dr. R.K. Thukral

**Research Editor**

Dr. Shafeeq Rahman

**Compiled, Researched and Published by  
Datanet India Pvt. Ltd.**

D-100, 1st Floor,

Okhla Industrial Area, Phase-I,  
New Delhi- 110020.

Ph.: 91-11- 43580781-84

Email : support@indiastatpublications.com

Website : www.indiastatelections.com

**Online Book Store :**

www.indiastatpublications.com

**Report No. :** AFB/KA-118-0123

**ISBN :** 978-93-87130-05-0

**First Edition :** January, 2018

**Sixth Updated Edition :** January, 2023

**Price :** Rs. 11500/-

US\$ 310/-

**© Datanet India Pvt. Ltd.**

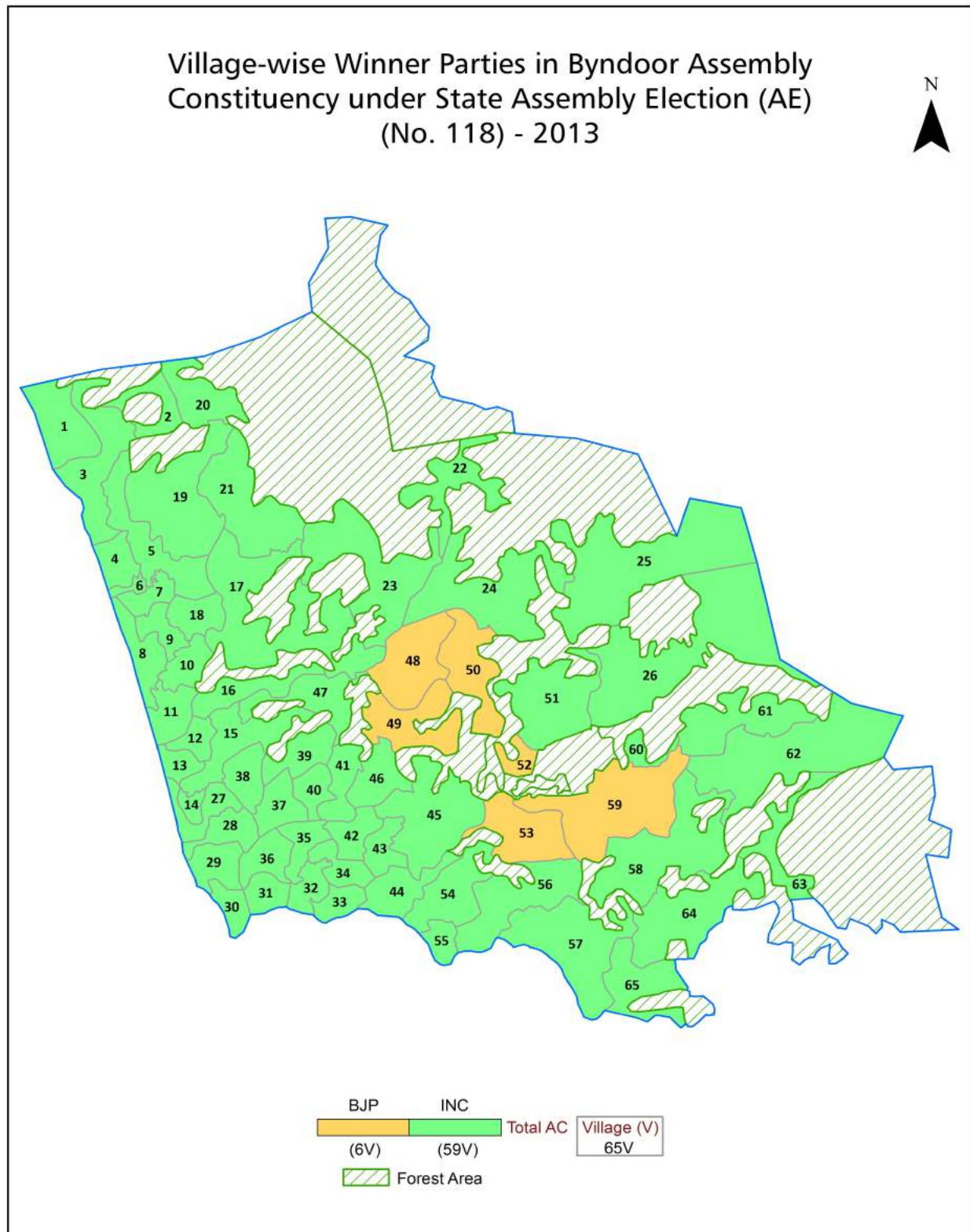
All rights reserved. No part of this book may be reproduced, stored in a retrieval system or transmitted in any form or by any means, mechanical photocopying, photographing, scanning, recording or otherwise without the prior written permission of the publisher. Please refer to Disclaimer at page no. 186 for the use of this publication.

Printed in India

No.	Particulars	Page No.
	<b>Introduction</b>	
1	Assembly Constituency - (Vidhan Sabha) at a Glance   Features of Assembly as per Delimitation Commission of India (2008)	1-2
	<b>Location and Political Maps</b>	
2	Location Map   Boundaries of Assembly Constituency - (Vidhan Sabha) in District   Boundaries of Assembly Constituency under Parliamentary Constituency - (Lok Sabha)   Village-wise Winner Parties- 2019, 2018, 2014, 2013 and 2009	3-10
	<b>Administrative Setup (2011)</b>	
3	District   Sub-district   Towns   Villages   Inhabited Villages   Uninhabited Villages   Village Panchayat   Intermediate Panchayat	11-14
	<b>Demographics (2011)</b>	
4	Population   Households   Rural/Urban Population   Villages by Population Size   Sex Ratio (Total & 0-6 Years)   Religious Population   Social Population   Literacy Rate	15-16
	<b>Electoral Features</b>	
5	Important Dates of Last Elections Held   Electors by Gender   Service Electors   Voters   Voters Turnout   Polling Stations & Average Number of Electors per Polling Station   Electors by Age Group   Present Elected Representatives	17-22
	<b>Historical Summary Election Results</b>	
6	Vote Share of Major Parties   Winning Margin (Number & Percentage)   Polarity of Parties   Summary Result of Assembly Segment of Parliamentary Elections 2019, 2014, 2009, 2004, 1999   Summary Result of Assembly Elections 2018, 2013, 2008, 2004, 1999, 1994, 1989, 1985, 1983, 1978, 1972, 1967, 1962 and 1957	23-45
	<b>Polling Station Level Election Results</b>	
7	Name and Number of Polling Station 2019, 2018, 2014, 2013 and 2009   Polling Station-wise Electors, Voters & Voters Turnout 2019, 2018, 2014, 2013 and 2009   Polling Station wise Elections Results 2019, 2018, 2014, 2013 and 2009	46-166
	<b>Share of Assembly Constituency</b>	
8	Share of Assembly Constituency - (Vidhan Sabha) in State, District and Parliamentary Constituency - (Lok Sabha)	167
	<b>Socio-Economic Amenities (2011)</b>	
9	Access to Administrative Units   Agricultural, Manufacturing and Industrial Commodities   Demographic Indicators   Education   Health & Manpower   Drinking Water Supply   Sanitation   Entertainment and Recreations Infrastructure   Power   Food Allocation Distribution and Marketing of Agriculture Commodities Infrastructure   Transport and Road Infrastructure   Communication   Banking and Financial Services   Land Use   Irrigation Source	169-183
10	<b>Abbreviation &amp; Sources</b>	184-185
11	<b>Disclaimer</b>	186



## Location & Political Map



## Administrative Setup

### List of Village Panchayat & Intermediate Panchayat (Block) Name - 2011

Village Name	Village Panchayat Name	Intermediate Panchayat Name
Ajri	Ajri	Kundapura
Aloor	Aloor	Kundapura
Ampar	Ampar	Kundapura
Badakere	Nada	Kundapura
Bellal	Keradi	Kundapura
Bijoor	Bijoor	Kundapura
Byndoor	Byndoor	Kundapura
Chittoor	Chittoor	Kundapura
Devalkunda	Hemmadi	Kundapura
Edmoge	Hosangadi	Kundapura
Gangolli	Gangolli	Kundapura
Golihole	Golihole	Kundapura
Gujjadi	Gujjadi	Kundapura
Gulvadi	Karkunje	Kundapura
Hadavu	Nada	Kundapura
Hakladi	Hakladi	Kundapura
Hallihole	Hallihole	Kundapura
Halnad	Kavradu	Kundapura
Harkoor	Aloor	Kundapura
Hattiangadi	Hattiangadi	Kundapura
Hemmadi	Hemmadi	Kundapura
Heranjal	Kambadakone	Kundapura
Heror	Heror	Kundapura
Hosadu	Trashi	Kundapura
Hosangadi	Hosangadi	Kundapura
Hosoor	Chittoor	Kundapura
Idurkunhadi	Chittoor	Kundapura
Jadkal	Jadkal	Kundapura
Kalthodu	Kalthodu	Kundapura

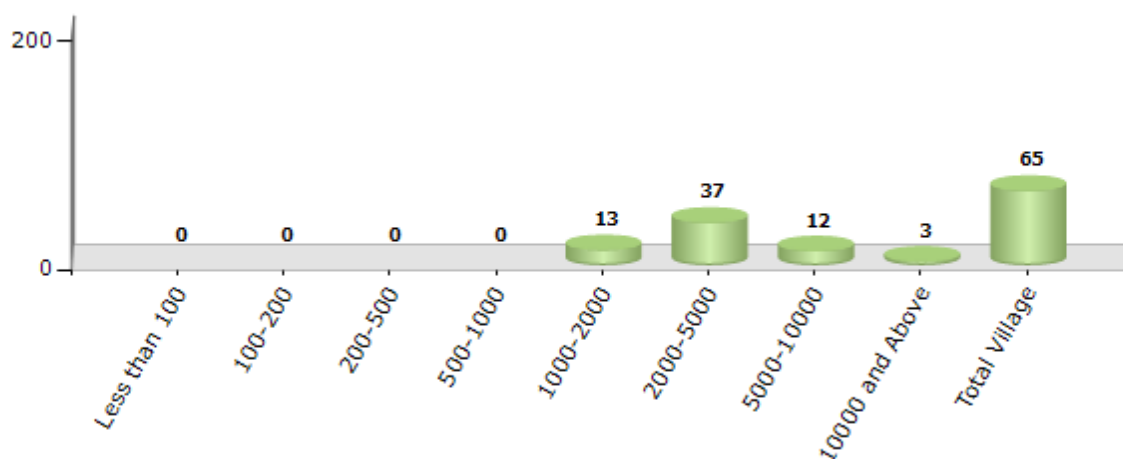
Contd....

## Demographic

### Number of Villages by Population Size - 2011

Less than 100	100-200	200-500	500-1000	1000-2000	2000-5000	5000-10000	10000 and Above	Total Village
0	0	0	0	13	37	12	3	65

Number of Villages by Population Size - 2011



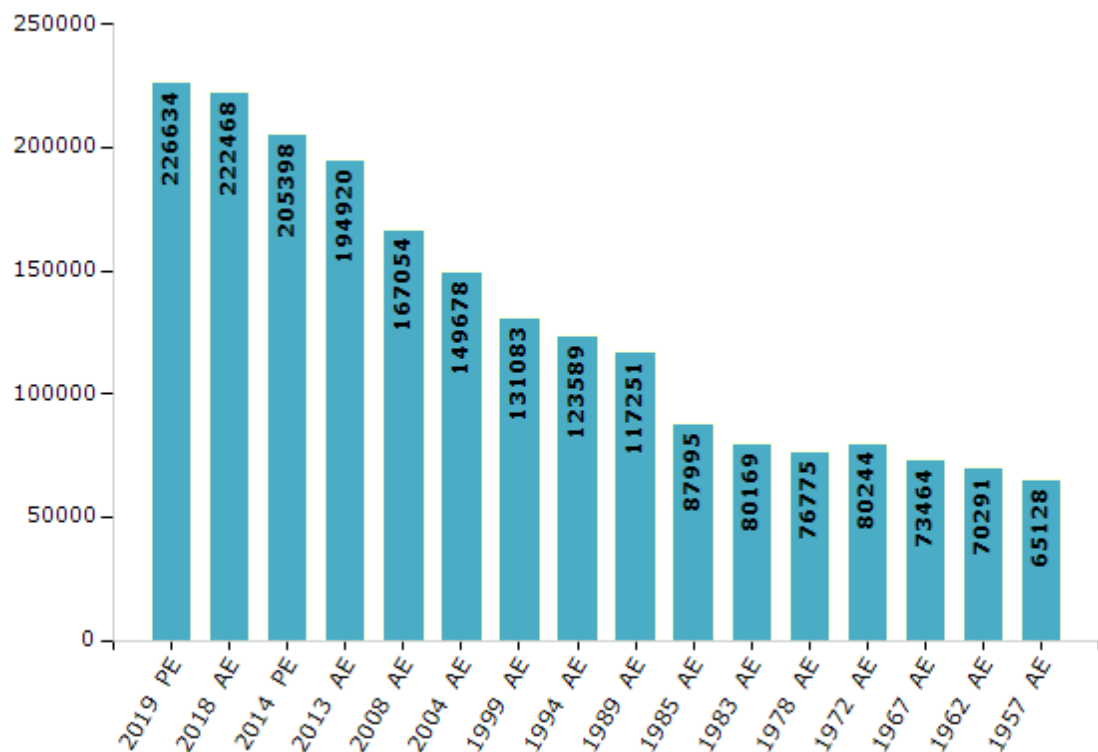
## Electoral Features

### Electors by Male & Female

Year	Male	Female	Others	Total
2019 PE	110283	116350	1	226634
2018 AE	108194	114260	14	222468
2014 PE	97726	107657	15	205398
2013 AE	91667	103247	6	194920
2009 PE	-	-	-	-
2008 AE	76205	90849	-	167054
2004 PE	-	-	-	-
2004 AE	71834	77844	-	149678
1999 PE	-	-	-	-
1999 AE	62939	68144	-	131083

Year	Male	Female	Others	Total
1994 AE	58891	64698	-	123589
1989 AE	56753	60498	-	117251
1985 AE	42179	45816	-	87995
1983 AE	38427	41742	-	80169
1978 AE	37197	39578	-	76775
1972 AE	38653	41591	-	80244
1967 AE	-	-	-	73464
1962 AE	-	-	-	70291
1957 AE	-	-	-	65128

Number of Electors



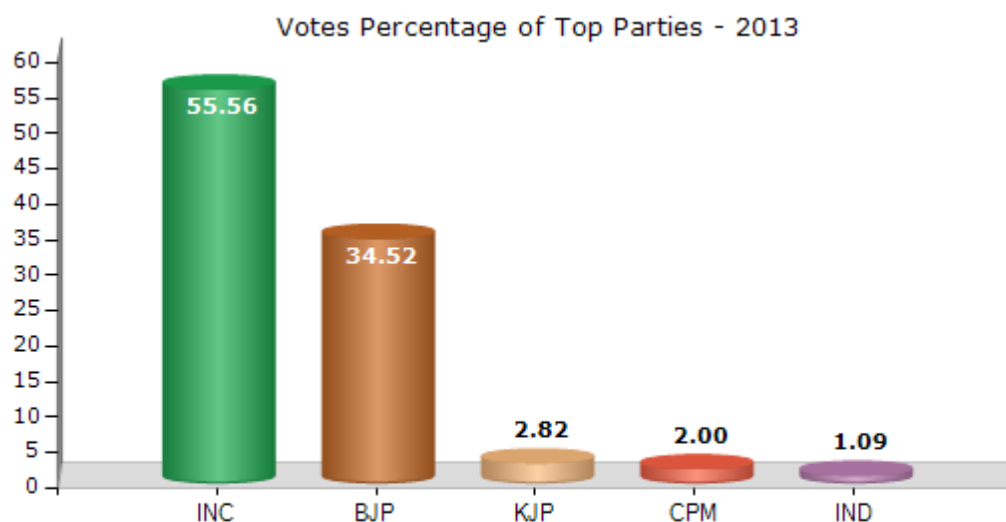
**Note :** AE : Assembly Election, PE : Assembly Segment of Parliamentary Election



## Historical Summary Election Results

### Summary Result of Assembly Election - 2013

Candidate Name	Party	Votes	Votes %
K.Gopala Poojary	INC	82277	55.56
B.M. Sukumar Shetty	BJP	51128	34.52
Naveenchandra Uppunda	KJP	4177	2.82
K.Shanker	CPM	2960	2
H. Suresh Poojray	IND	1611	1.09
Udaya Kumar Tallur	BSP	1515	1.02
Surayya Banu	JD(S)	1023	0.69
Sridhar Pedemane	IND	957	0.65
Lokesh Vittal Borkar Sirsi	IND	630	0.43
Divakar Kotiyan	IND	620	0.42
Abdul Azeez	IND	463	0.31
Abdul Hazid	IND	395	0.27
Manjunatha, K	JD(U)	334	0.23



## Polling Station Level Election Results

### Number and Name of Polling Stations (PS) (2018)

Number of Polling Stations	Name of Polling Stations	Number of Polling Stations	Name of Polling Stations
1	Grama Panchayat Office, Shiroor	22	Government Higher Primary School Tharapathi (Southern Portion)
2	Samyuktha Government Pre University College, Shiroor	23	Government Higher Primary School Alandur
3	Government Model Higher Primary School Shiroor (Eastern Portion)	24	Government Higher Primary School Maddodi
4	Government Model Higher Primary School Shiroor (Southern Portion)	25	Government Model Higher Primary School Byndoor (Northern Portion)
5	Anganavadi Center, Dasanadi Shiroor	26	Government Model Higher Primary School Byndoor (Southern Portion)
6	Government Higher Primary School Melpankthi, Shiroor (Northern Portion)	27	Government Junior College (Middle Portion)
7	Government Higher Primary School Melpankthi, Shiroor (Southern Portion)	28	Government Junior College (New Building)
8	Government Lower Primary School Kalihitlu Shiroor (Middle Portion)	29	Government Hindustani Higher Primary School Byndoor (Northern Portion)
9	Government Hindustani Higher Primary School Shiroor (Northern Portion)	30	Government Hindustani Higher Primary School Byndoor (Southern Portion)
10	Government Higher Primary School Hadavinakone, Shiroor (Western Portion)	31	Government Higher Primary School Yedthere Byndoor
11	Government Higher Primary School Hadavinakone, Shiroor (Eastern Portion)	32	Government Higher Primary School, Bada Byndoor (Eastern Portion)
12	Government Higher Primary School Kesarakodi, Shiroor (Southern Portion)	32A	Government Higher Primary School, Bada Byndoor (Eastern Portion)
13	Government Higher Primary School Kesarakodi, Shiroor (Northern Portion)	33	Government Higher Primary School, Bada Byndoor (New Building)
14	Govt. Lower Primary School, Bappanabailu, Shiruru	34	Sri Dharmasthala Manjunatheshwara Aided Higher Primary School, Mayyadi, Byndoor (Eastern Portion)
15	Anganavadi Center, Alvegadde Shiroor	35	Sri Dharmasthala Manjunatheshwara Aided Higher Primary School, Mayyadi, Byndoor (Western Portion)
16	Government Lower Primary School Henaberu Paduvri	36	Government Higher Primary School, Ganganadu Byndoor
17	Government Higher Primary School, Dombe	37	Government Higher Primary School Teggarse (Middle Portion)
18	Government Higher Primary School Kotebagilu, Paduvri	38	Government Higher Primary School Teggarse (New Building)
19	Holicross Higher Primary School Paduvri (Eastern Wing of Northern Portion)	39	Government Higher Primary School Maikala Teggarse (Middle Portion)
20	Holicross Higher Primary School Paduvri (Western Wing of Northern Portion)	40	Government Higher Primary School Maikala Teggarse (New Building)
21	Government Higher Primary School Tharapathi (Northern Portion)	41	Government Higher Primary School, Yalajith (Eastern Portion)

Contd....

## Polling Station Level Election Results

### Polling Station-wise Votes Secured by Overall Top Five Parties in Byndoor Assembly in Assembly Election (AE) under Shimoga Parliamentary Constituency in Karnataka (2018)

Number of Polling Station	Winner - B. M. Sukumar Shetty (BJP)	Runner-up - K. Gopala Poojary (INC)	3rd - Suresh Kallagar (CPM)	4th - Ravi Shetty (JD(S))	5th - B. Subramanya Bijoor (IND)	NOTA	Other	Total Votes Secured
35	390	148	3	5	1	3	8	558
36	282	646	4	10	3	11	6	962
37	338	184	5	7	5	2	9	550
38	293	307	3	6	3	3	5	620
39	294	346	10	6	1	7	8	672
40	178	296	1	4	1	7	5	492
41	503	392	10	24	8	11	26	974
42	442	396	3	27	2	10	19	899
43	227	348	3	9	3	9	6	605
44	279	285	4	42	1	8	16	635
45	403	281	6	30	1	6	12	739
46	530	84	6	24	9	3	8	664
47	575	412	9	14	2	5	13	1030
48	704	317	2	8	1	5	14	1051
49	240	528	5	6	1	2	9	791
50	286	386	6	1	3	6	5	693
51	329	239	3	10	7	6	9	603
52	441	344	16	13	7	10	17	848
53	504	407	9	6	7	8	9	950
54	449	475	5	12	6	3	3	953
55	559	141	5	7	7	11	10	740
56	422	224	21	9	6	14	22	718
57	366	363	13	21	8	13	24	808
58	329	264	2	14	2	9	9	629
59	459	269	4	6	9	3	7	757
60	319	442	1	14	9	11	10	806
61	457	247	16	9	5	4	24	762
62	278	308	8	12	4	8	11	629
63	317	200	5	11	1	2	9	545
64	273	215	4	4	3	1	4	504
65	320	267	11	9	7	10	10	634
66	357	280	12	6	21	5	11	692
67	471	266	8	11	1	7	18	782
68	392	297	9	11	4	11	14	738
69	583	312	16	10	4	8	11	944

Contd....

## Polling Station Level Election Results

**Winner, Runner-up and 3rd Party Position & Winning Margin According to Polling Stations in Byndoor Assembly in Assembly Election (AE) under Shimoga Parliamentary Constituency in Karnataka (2018)**

Polling Station Number	Winner Party	Winner Votes (%)	Runner-up Party	Runner-up Votes (%)	Winning Margin Votes (%)	Third Party	Third Party Votes (%)	Other Votes (%)
70	BJP	510 (61.45)	INC	273 (32.89)	237 (28.56)	CPM	11 (1.33)	36 (4.34)
71	INC	462 (50.55)	BJP	406 (44.42)	56 (6.13)	CPM	10 (1.09)	36 (3.94)
72	BJP	444 (62.27)	INC	235 (32.96)	209 (29.31)	JD(S)	9 (1.26)	25 (3.51)
73	BJP	389 (58.23)	INC	254 (38.02)	135 (20.21)	CPM	8 (1.2)	17 (2.54)
74	BJP	336 (61.65)	INC	184 (33.76)	152 (27.89)	IND (BSB)	4 (0.73)	21 (3.85)
75	BJP	391 (48.21)	INC	384 (47.35)	7 (0.86)	JD(S)	10 (1.23)	26 (3.21)
76	BJP	467 (57.87)	INC	309 (38.29)	158 (19.58)	IND (BSB)	6 (0.74)	25 (3.1)
77	BJP	490 (62.58)	INC	259 (33.08)	231 (29.5)	CPM	9 (1.15)	25 (3.19)
78	BJP	507 (58.55)	INC	307 (35.45)	200 (23.1)	JD(S)	17 (1.96)	35 (4.04)
79	BJP	543 (61.22)	INC	292 (32.92)	251 (28.3)	JD(S)	13 (1.47)	39 (4.4)
80	BJP	332 (59.29)	INC	200 (35.71)	132 (23.58)	CPM	6 (1.07)	22 (3.93)
81	BJP	359 (60.13)	INC	208 (34.84)	151 (25.29)	JD(S)	7 (1.17)	23 (3.85)
82	BJP	490 (53.26)	INC	359 (39.02)	131 (14.24)	JD(S)	15 (1.63)	56 (6.09)
83	BJP	351 (53.51)	INC	276 (42.07)	75 (11.44)	JD(S)	7 (1.07)	22 (3.35)
84	INC	309 (51.85)	BJP	255 (42.79)	54 (9.06)	JD(S)	9 (1.51)	23 (3.86)
85	BJP	360 (54.63)	INC	270 (40.97)	90 (13.66)	CPM	6 (0.91)	23 (3.49)
86	BJP	375 (60.78)	INC	218 (35.33)	157 (25.45)	CPM	5 (0.81)	19 (3.08)
87	BJP	539 (53.37)	INC	415 (41.09)	124 (12.28)	JD(S)	15 (1.49)	41 (4.06)
88	BJP	404 (48.15)	INC	386 (46.01)	18 (2.14)	JD(S)	12 (1.43)	37 (4.41)
89	BJP	320 (54.24)	INC	228 (38.64)	92 (15.6)	JD(S)	11 (1.86)	31 (5.25)
90	BJP	410 (66.67)	INC	166 (26.99)	244 (39.68)	CPM	12 (1.95)	27 (4.39)
91	BJP	535 (63.09)	INC	260 (30.66)	275 (32.43)	IND (HSP)	11 (1.3)	42 (4.95)
92	BJP	512 (67.72)	INC	213 (28.17)	299 (39.55)	IND (HSP)	6 (0.79)	25 (3.31)
93	BJP	532 (54.12)	INC	404 (41.1)	128 (13.02)	CPM	11 (1.12)	36 (3.66)
94	BJP	441 (72.18)	INC	145 (23.73)	296 (48.45)	JD(S)	7 (1.15)	18 (2.95)
95	BJP	605 (68.05)	INC	231 (25.98)	374 (42.07)	IND (BSB)	10 (1.12)	43 (4.84)
96	INC	272 (49.82)	BJP	248 (45.42)	24 (4.4)	CPM	7 (1.28)	19 (3.48)
97	BJP	707 (71.92)	INC	242 (24.62)	465 (47.3)	JD(S)	8 (0.81)	26 (2.64)
98	BJP	509 (67.87)	INC	222 (29.6)	287 (38.27)	CPM	8 (1.07)	11 (1.47)
99	BJP	389 (65.6)	INC	172 (29.01)	217 (36.59)	CPM	8 (1.35)	24 (4.05)
100	BJP	499 (53.2)	INC	399 (42.54)	100 (10.66)	CPM	11 (1.17)	29 (3.09)
101	BJP	398 (52.03)	INC	348 (45.49)	50 (6.54)	CPM	8 (1.05)	11 (1.44)
102	BJP	595 (59.09)	INC	384 (38.13)	211 (20.96)	CPM	6 (0.6)	22 (2.18)
103	BJP	436 (58.52)	INC	276 (37.05)	160 (21.47)	JD(S)	9 (1.21)	24 (3.22)
104	BJP	342 (61.84)	INC	180 (32.55)	162 (29.29)	JD(S)	6 (1.08)	25 (4.52)

Contd....

## Socio-Economic Amenities - Rural

### Access to Education Facilities

Particulars	Number of Village (% of Population)				
	Available	Not Available	If Not Available (Distance of Nearest Facility)		
			A	B	C
Govt. Primary School	65 (100)	0 (0)	0 (0)	0 (0)	0 (0)
Private Primary School	16 (42)	49 (58)	0 (0)	0 (0)	0 (0)
Govt. Middle School	60 (97)	5 (3)	4 (2)	1 (1)	0 (0)
Private Middle School	17 (44)	48 (56)	0 (0)	0 (0)	0 (0)
Govt. Secondary School	23 (54)	42 (46)	19 (18)	8 (9)	0 (0)
Private Secondary School	16 (39)	49 (61)	3 (5)	4 (4)	0 (0)
Govt. Senior Secondary School	10 (31)	55 (69)	11 (18)	14 (17)	7 (8)
Private Senior Secondary School	6 (19)	59 (81)	8 (7)	9 (10)	3 (3)
Govt. Arts and Science Degree College	3 (8)	62 (92)	6 (9)	31 (50)	18 (22)
Private Arts and Science Degree College	0 (0)	65 (100)	0 (0)	2 (5)	5 (6)
Govt. Engineering College	0 (0)	65 (100)	0 (0)	0 (0)	0 (0)
Private Engineering College	0 (0)	65 (100)	0 (0)	0 (0)	65 (100)
Govt. Medicine College	0 (0)	65 (100)	0 (0)	0 (0)	0 (0)
Private Medicine College	0 (0)	65 (100)	0 (0)	12 (23)	53 (77)
Govt. Management Institute	0 (0)	65 (100)	0 (0)	0 (0)	0 (0)
Private Management Institute	0 (0)	65 (100)	0 (0)	0 (0)	65 (100)
Govt. Polytechnic	0 (0)	65 (100)	0 (0)	2 (2)	3 (6)
Private Polytechnic	0 (0)	65 (100)	3 (3)	15 (22)	42 (67)
Govt. Vocational Training School/ITI	0 (0)	65 (100)	1 (1)	3 (4)	4 (7)
Private Vocational Training School/ITI	3 (7)	62 (93)	9 (12)	21 (36)	24 (33)
Govt. Non Formal Training Centre	0 (0)	65 (100)	0 (0)	1 (1)	4 (9)
Private Non Formal Training Centre	0 (0)	65 (100)	3 (3)	16 (23)	41 (63)
Govt. School For Disabled	0 (0)	65 (100)	0 (0)	0 (0)	4 (6)
Private School For Disabled	2 (3)	63 (97)	4 (4)	8 (10)	47 (76)
Government Others	3 (13)	62 (87)	3 (4)	15 (17)	36 (43)
Private Others	6 (20)	59 (80)	0 (0)	0 (0)	2 (3)

Note : Distance A : Less than 5 km; B : Between 5-10 km; C : 10+ km.; Source : Data Analysis is based on 2011 Census.

## DISCLAIMER

The Terms of Use and Disclaimer of Datanet India Private Limited (hereinafter referred to as "Datanet") for use of this analysis report of **Byndoor Assembly Constituency (Byndoor Vidhan Sabha)** :-

1. **Assembly Factbook™** is a Registered Trade Mark owned by Datanet.
2. All the maps are sketched and graphical representation only and have not been drawn to the scale and also not to represent the actual geographical area or boundary of the unit.
3. The data for the aforesaid analysis is based on authentic sources and has been culled from the various publications of Census, CSO and NSSO for district and block level data, various central and state government departments, Central & State Elections Commissions and the concerned Returning Officers' releases, Electoral Rolls, Election results and allied publications, internal assessment, surveys, estimates and analysis. Therefore, certain adjustment of data at micro level may have been done to arrive closer to the macro data.
4. Data have been provided on an "As Is" and "As AVAILABLE" basis
5. The colours shown in the maps or diagram and charts of a particular party, alliance or AC are indicative and do not represent them.
6. This publication which includes maps, sheets, graphs and data would be the property under copyright of Datanet only. The user may use these for its internal study, analysis and research purposes. It's public display, re-selling or any commercial uses by the user are not allowed.
7. Datanet has taken due care and caution in compilation and processing of data and allied information, but does not guarantee the accuracy, adequacy or completeness of any information/analysis and will be not responsible for any errors or omissions or for the results obtained from the use of such information/analysis.
8. All the contents for the publication have been culled from various authentic sources and Datanet reasonably believes such sources to be reliable, but does not make any representations, express or implied as to the accuracy or fitness of use of such information. The information or contents of the information/analysis do not constitute advice and should not be relied upon in making (or refraining from making) any decision. Any reliance placed upon the information provided by Datanet is the sole responsibility and strictly at the user's risk.
9. In no event will Datanet be liable for any damages (including, without limitation, damages for loss of business projects, or loss of profits) arising in contract, tort or otherwise from the use of or inability to use any of its contents, or from any action taken (or refrained from being taken) as a result of using the analysis or any of its contents. Datanet its directors, owners, editors, officials, employees, distributor and agents or any associate will not be liable for any errors in the information contained or any consequences arising from the use of the contents of the provided information/analysis.
10. If any provision of these terms and conditions is held invalid or illegal or unenforceable for any reason by any court of competent jurisdiction, such provision shall be severed and the remainder of provisions of the terms and conditions shall continue in full force and effect as if the Term of Use had been executed with the invalid, illegal or unenforceable provision eliminated.
11. If there are any discrepancies in the information provided, please bring it to attention of Datanet for suitable rectification measures.



**Buy Online This Complete Book At  
Datanet India eBooks Store**

**[www.indiastatpublications.com](http://www.indiastatpublications.com)**

**or go directly at**

**[http://www.indiastatpublications.com/  
Assembly\\_factbook/Karnataka/Shimoga/ Byndoor](http://www.indiastatpublications.com/Assembly_factbook/Karnataka/Shimoga/Byndoor)**

 **indiastat**elections

ISBN : 978-93-87130-05-0

