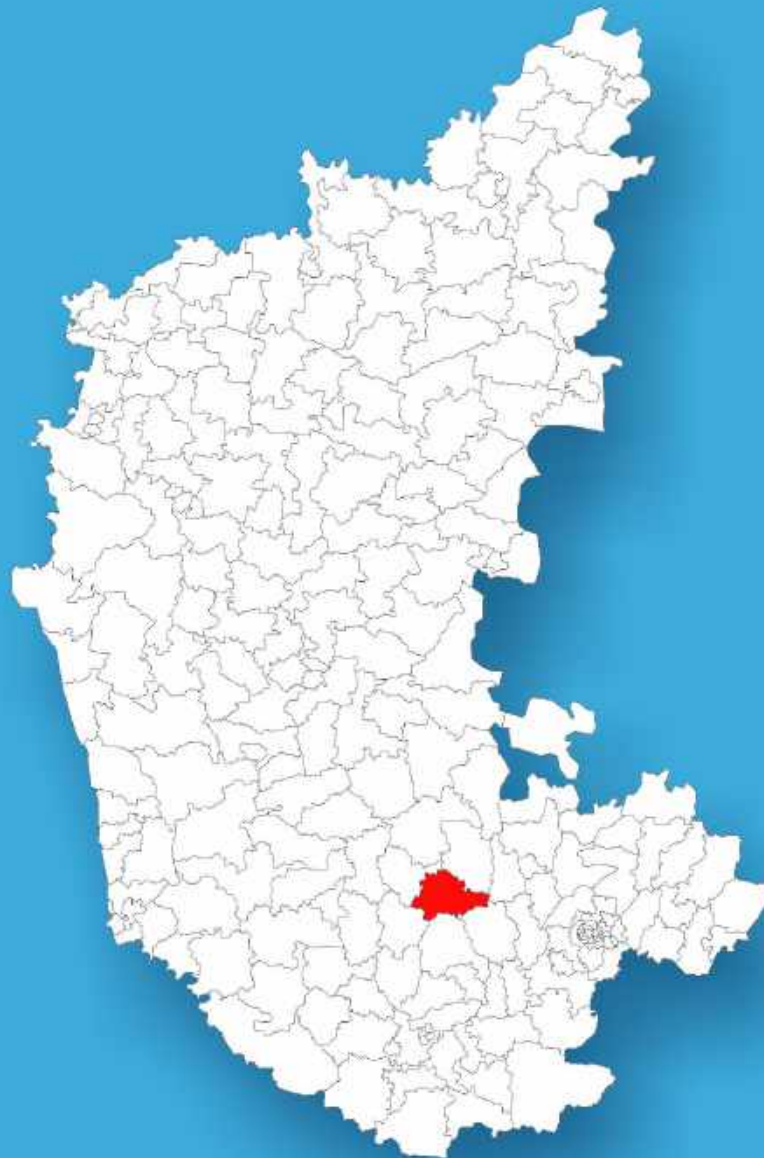




Karnataka

Assembly Factbook™

Turuvekere Assembly Constituency



Key Electoral Data of Turuvekere
Assembly Constituency (Vidhan Sabha)

Karnataka

Assembly Factbook™

Turuvekere Assembly Constituency



Turuvekere Vidhan Sabha

Editor & Director

Dr. R.K. Thukral

Research Editor

Dr. Shafeeq Rahman

Compiled, Researched and Published by Datanet India Pvt. Ltd.

D-100, 1st Floor,

Okhla Industrial Area, Phase-I,

New Delhi- 110020.

Ph.: 91-11- 43580781-84

Email : support@indiastatpublications.com

Website : <http://www.indiastatelections.com>

Online Book Store :

www.indiastatpublications.com

Report No. : AFB/KA-130-0125

ISBN : 978-93-5802-116-5

First Edition : January, 2018

Eighth Updated Edition : January, 2025

Price : Rs.11500/-

US\$ 310

© Datanet India Pvt. Ltd.

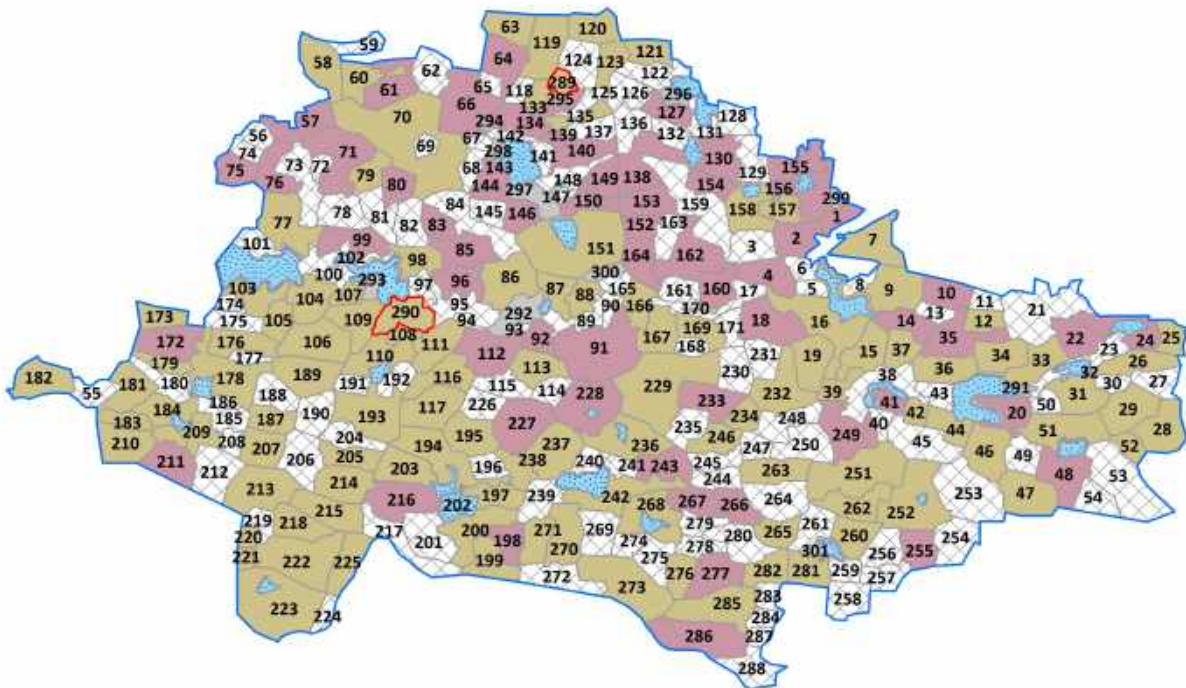
All rights reserved. No part of this book may be reproduced, stored in a retrieval system or transmitted in any form or by any means, mechanical photocopying, photographing, scanning, recording or otherwise without the prior written permission of the publisher. Please refer to Disclaimer at page no. 198 for the use of this publication.

Printed in India

No.	Particulars	Page No.
	Introduction	
1	Assembly Constituency - (Vidhan Sabha) at a Glance Features of Assembly as per Delimitation Commission of India (2008)	1-2
	Location and Political Maps	
2	Location Map Boundaries of Assembly Constituency - (Vidhan Sabha) in District Boundaries of Assembly Constituency under Parliamentary Constituency - (Lok Sabha) Town & Village-wise Winner Parties- 2024, 2019, 2018, 2014, 2013 and 2009	3-11
	Administrative Setup (2011)	
3	District Sub-district Towns Villages Inhabited Villages Uninhabited Villages Village Panchayat Intermediate Panchayat	12-26
	Demographics (2011)	
4	Population Households Rural/Urban Population Towns and Villages by Population Size Sex Ratio (Total & 0-6 Years) Religious Population Social Population Literacy Rate	27-28
	Electoral Features	
5	Important Dates of Last Elections Held Electors by Gender Service Electors Voters Voters Turnout Polling Stations & Average Number of Electors per Polling Station Electors by Age Group Present Elected Representatives	29-34
	Historical Summary Election Results	
6	Vote Share of Major Parties Winning Margin (Number & Percentage) Polarity of Parties Summary Result of Assembly Segment of Parliamentary Elections 2024, 2019, 2014, 2009, 2004 and 1999 Summary Result of Assembly Elections 2023, 2018, 2013, 2008, 2004, 1999, 1994, 1989, 1985, 1983, 1978, 1972, 1967, 1962 and 1957	35-58
	Polling Station Level Election Results	
7	Name and Number of Polling Station 2024, 2019, 2018, 2014, 2013 and 2009 Polling Station-wise Electors, Voters & Voters Turnout 2024, 2019, 2018, 2014, 2013 and 2009 Polling Station wise Elections Results 2024, 2019, 2018, 2014, 2013 and 2009	59-178
	Share of Assembly Constituency	
8	Share of Assembly Constituency - (Vidhan Sabha) in State, District and Parliamentary Constituency - (Lok Sabha)	179
	Socio-Economic Amenities (2011)	
9	Access to Administrative Units Agricultural, Manufacturing and Industrial Commodities Demographic Indicators Education Health & Manpower Drinking Water Supply Sanitation Entertainment and Recreations Infrastructure Power Food Allocation Distribution and Marketing of Agriculture Commodities Infrastructure Transport and Road Infrastructure Communication Banking and Financial Services Land Use Irrigation Source	181-195
10	Abbreviation & Sources	196-197
11	Disclaimer	198

Location & Political Map

Town & Village-wise Winner Parties in Turuvekere Assembly
Constituency under State Assembly Election (AE)
(No. 130) - 2013



Town
289 - Adityapatna
290 - Turuvekere

JD(S)	KJP	UV	UN	Total AC	Town (T)	Village (V)
(2T+108V)	(60V)	(120V)(11V)			2T	299V

UV : Unspecified Village
UN : Uninhabited Village

Administrative Setup

List of Village Panchayat & Intermediate Panchayat (Block) Name - 2011

Village Name	Village Panchayat Name	Intermediate Panchayat Name
A.Hosahalli	Banasandra	Turuvekere
Abalakatte	Goni Tumkur	Turuvekere
Abbanakuppe	Idagoor	Gubbi
Adakekere	Idagoor	Gubbi
Ajjanahalli	Manichendur	Turuvekere
Ajjenahalli	Lokammanahalli	Turuvekere
Akkalasandra	Sampige	Turuvekere
Aladahalli	Kanathur	Turuvekere
Amanikere	Chandrashekarapura	Gubbi
Ambaladevanahalli	Bytharahosahalli	Turuvekere
Ammasandra	Ammasandra	Turuvekere
Anadagu	Mayasandra	Turuvekere
Anekere	Anekere	Turuvekere
Anemale	Madihalli	Turuvekere
Angadigere	Vadavanaghatta	Turuvekere
Angarekhanahalli	Sampige	Turuvekere
Ankalakoppa	Idagur	Gubbi
Appasandra	Ammasandra	Turuvekere
Arakere	Dandinashivara	Turuvekere
Aralikere	Madihalli	Turuvekere
Aremallenahalli	Aremallenahalli	Turuvekere
Arisinadahalli	Madihalli	Turuvekere
Averahalli	Changavi	Gubbi
Ayarahalli	Vadavanaghatta	Turuvekere
Badagarahalli	Goni Tumkur	Turuvekere
Balamadiahalli	Banasandra	Turuvekere
Ballekatte	Hullekere	Turuvekere
Banasandra	Banasandra	Turuvekere
Basavanahalli	Thandaga	Turuvekere

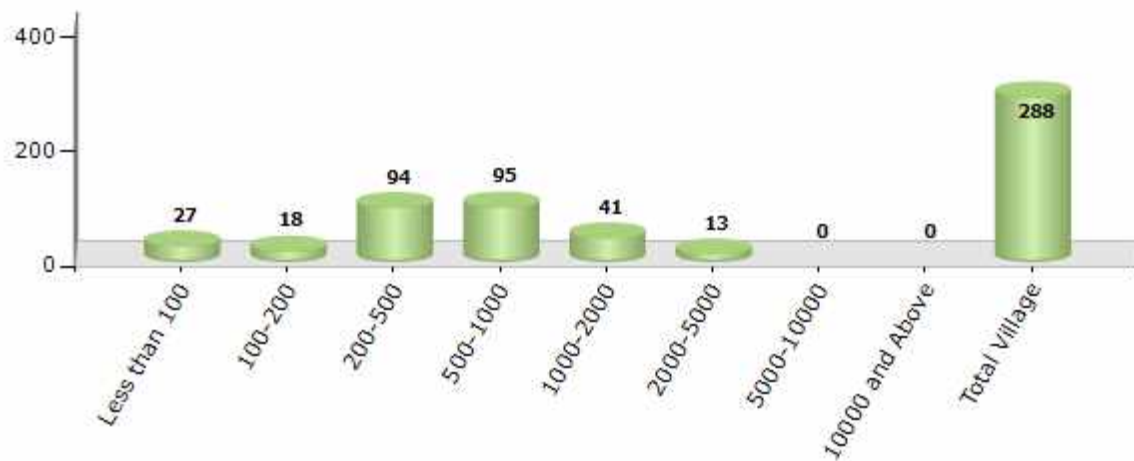
Contd....

Demographic

Number of Villages by Population Size - 2011

Less than 100	100-200	200-500	500-1000	1000-2000	2000-5000	5000-10000	10000 and Above	Total Village
27	18	94	95	41	13	0	0	288

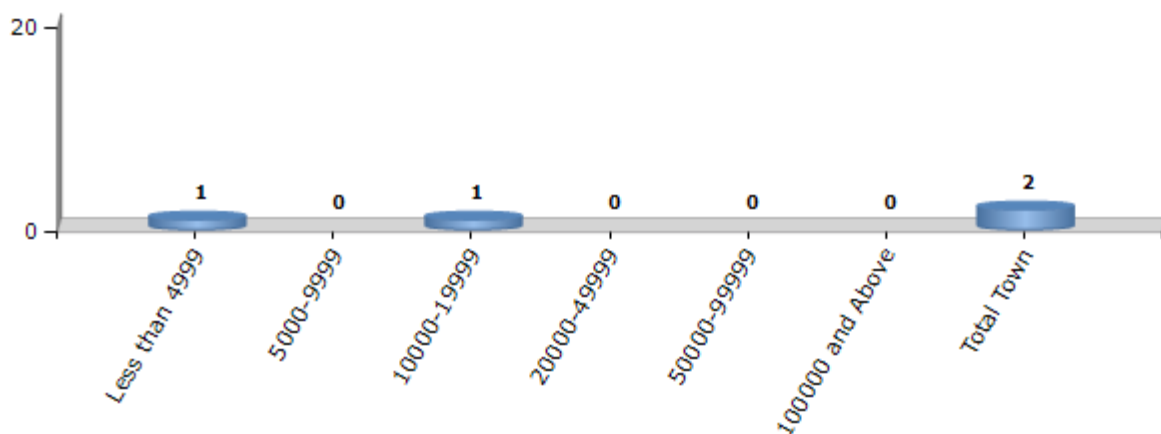
Number of Villages by Population Size - 2011



Number of Towns by Population Size - 2011

Less than 4999	5000-9999	10000-19999	20000-49999	50000-99999	100000 and Above	Total Town
1	0	1	0	0	0	2

Number of Towns by Population Size - 2011

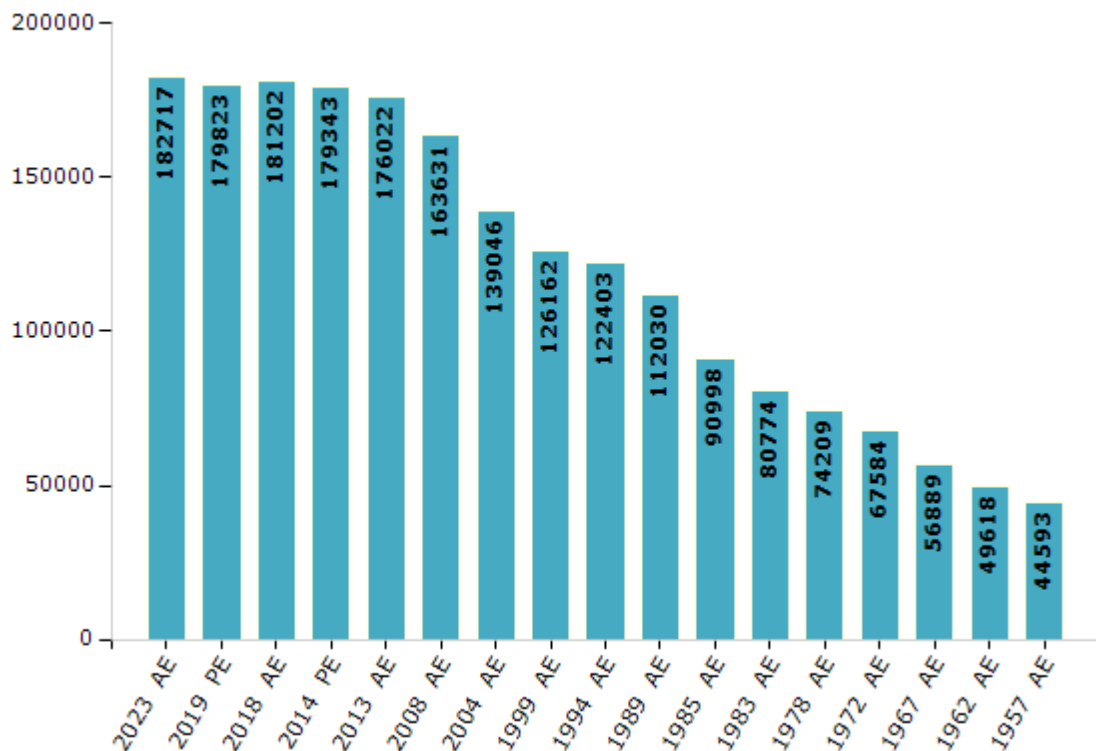


Electoral Features

Electors by Male & Female

Year	Male	Female	Others	Total	Year	Male	Female	Others	Total
2023 AE	90996	91719	2	182717	1999 AE	63212	62950	-	126162
2019 PE	90240	89576	7	179823	1994 AE	61753	60650	-	122403
2018 AE	90867	90335	0	181202	1989 AE	56789	55241	-	112030
2014 PE	89431	89908	4	179343	1985 AE	46747	44251	-	90998
2013 AE	87998	88019	5	176022	1983 AE	40995	39779	-	80774
2009 PE	-	-	-	-	1978 AE	37534	36675	-	74209
2008 AE	82139	81492	-	163631	1972 AE	34866	32718	-	67584
2004 PE	-	-	-	-	1967 AE	-	-	-	56889
2004 AE	69753	69293	-	139046	1962 AE	-	-	-	49618
1999 PE	-	-	-	-	1957 AE	-	-	-	44593

Number of Electors



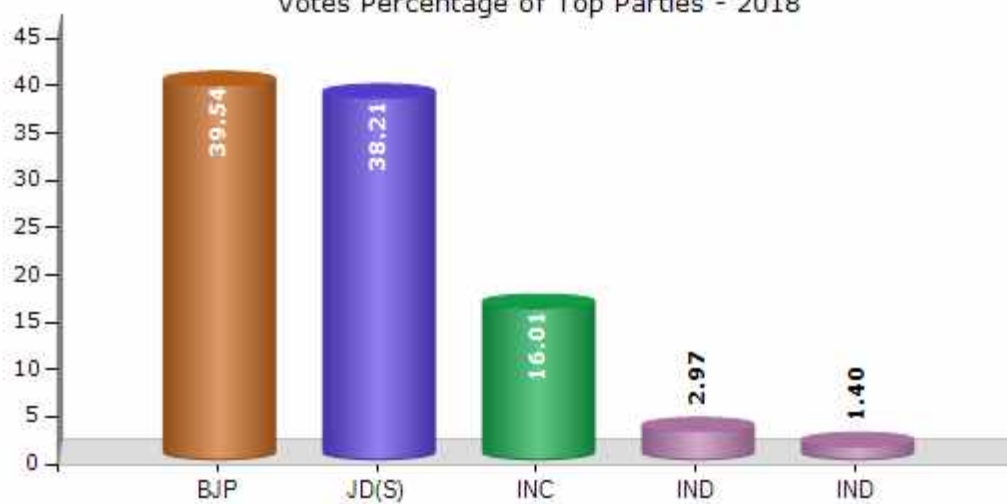
Note : AE : Assembly Election, PE : Assembly Segment of Parliamentary Election

Historical Summary Election Results

Summary Result of Assembly Election - 2018

Candidate Name	Party	Votes	Votes %
Jayaram A S	BJP	60710	39.54
M T Krishnappa	JD(S)	58661	38.21
Rangappa T Chowdri	INC	24584	16.01
M.Narayan Gowda	IND	4566	2.97
M D Ramesh	IND	2148	1.4
H L Sanjeevaiah	IND	613	0.4
Kapanigowda	IND	393	0.26
Raghavendra M J Lad	IND	279	0.18
Krishnappa	IND	238	0.16
G S Basavalingaiah	IND	198	0.13
Ramesh B M	IND	195	0.13
	NOTA	954	0.62

Votes Percentage of Top Parties - 2018



Polling Station Level Election Results

Number and Name of Polling Stations (PS) (2018)

Number of Polling Stations	Name of Polling Stations	Number of Polling Stations	Name of Polling Stations
1	Government Higher Primary School (New Building) HPS A Hosahalli	22	Government Higher Primary School HPS Haridasanahalli
2	Government Higher Primary School HPS Marasandra	23	Government Lower Primary School LPS N Manchenahalli
3	Government Higher Primary School HPS Banasandra-1	24	Government Higher Primary School LPS Anekere
4	Government Higher Primary School HPS Banasandra-2	25	Government Higher Primary School (North Side) HPS Lokammanahalli-1
5	Government Urdu Lower Primary School HPS Urdu Banasandra-3	26	Government Higher Primary School (South Side) HPS Lokammanahalli-2
6	Government Model Lower Primary School HPS Somlapura	27	Government Model Higher Primary School (East Side South Side) Building Old Building HPS Dandinashivara-1
7	Government Lower Primary School HPS P Kallalli	28	Government Model Higher Primary School (East Side South Side) Building Old Building HPS Dandinashivara-2
8	Government Lower Primary School LPS Kolaghatta	29	Government High School Ghs Dandinashivara-3
9	Government Lower Primary School LPS Neeragunda	30	Government Higher Primary School LPS Giriyannahalli
10	Government Model Higher Primary School HPS Kunikenahalli	31	Government Lower Primary School LPS Appasandra
11	Government Model Higher Primary School HPS Kunikenahalli	32	Government Lower Primary School LPS Siddapura
12	Government Higher Primary School HPS Dunda	33	Government Higher Primary School HPS Toremavinahalli
13	Government Higher Primary School HPS Dunda	34	Government Higher Primary School LPS Doddaghatta
14	Government Higher Primary School HPS Heggere	35	Government Higher Primary School HPS Sadarahalli
15	Government Lower Primary School LPS Janatha Kaloni (D Hoshalli)	36	Government Lower Primary School LPS Basavanahalli
16	Government Higher Primary School HPS Hadavanahalli	37	Government Higher Primary School HPS Muddannahalli
17	Government Lower Primary School LPS Hadavanahalli Gollarahatti	38	Government Lower Primary School LPS Melannahalli
18	Government Higher Primary School HPS Honnenahalli	39	Government Lower Primary School LPS Chandrapura
19	Government Higher Primary School (East Side) HPS Adityapattana	40	Government Lower Primary School LPS Govindaghatta
20	Government Higher Primary School (West Side) HPS Adityapattana	41	Government Lower Primary School LPS Somenahalli
21	Government Model Lower Primary School (West Side) HPS Ammasandra	42	Government Lower Primary School LPS Guddenahalli

Contd....

Polling Station Level Election Results

Polling Station-wise Votes Secured by Overall Top Five Parties in Turuvekere Assembly in Assembly Election (AE) under Tumkur Parliamentary Constituency in Karnataka (2018)

Number of Polling Station	Winner - Jayaram A S (BJP)	Runner-up - M T Krishnappa (JD(S))	3rd - Rangappa T Chowdri (INC)	4th - M.Narayan Gowda (IND)	5th - M D Ramesh (IND)	NOTA	Other	Total Votes Secured
36	149	259	131	3	65	3	11	621
37	194	474	142	37	43	4	5	899
38	38	100	153	0	108	2	9	410
39	192	257	51	9	16	2	5	532
40	299	285	48	11	20	3	9	675
41	142	310	124	10	15	6	12	619
42	160	322	106	15	0	0	8	611
43	152	394	137	16	16	3	3	721
44	271	267	73	14	6	4	5	640
45	237	264	117	22	2	9	9	660
46	334	126	38	3	0	2	3	506
47	358	101	42	3	1	2	1	508
48	626	156	122	18	0	12	16	950
49	127	69	107	5	0	3	2	313
50	617	277	156	4	6	8	10	1078
51	423	236	209	14	1	7	18	908
52	289	135	90	9	2	7	5	537
53	420	140	129	0	0	3	10	702
54	438	187	119	2	2	2	4	754
55	187	265	172	0	5	2	7	638
56	310	113	50	8	2	2	3	488
57	268	137	82	7	1	3	6	504
58	286	162	55	11	0	3	7	524
59	196	360	290	6	17	4	10	883
60	182	309	135	6	1	2	9	644
61	314	292	237	42	6	4	4	899
62	163	206	86	11	6	3	9	484
63	218	228	120	10	16	4	6	602
64	203	280	62	9	6	1	12	573
65	240	392	98	5	19	1	8	763
66	315	384	82	11	10	4	9	815
67	139	455	52	1	47	3	10	707
68	186	550	224	22	6	7	9	1004
69	121	237	114	5	46	5	11	539
70	235	277	65	19	18	3	6	623

Contd....

Polling Station Level Election Results

Winner, Runner-up and 3rd Party Position & Winning Margin According to Polling Stations in Turuvekere Assembly in Assembly Election (AE) under Tumkur Parliamentary Constituency in Karnataka (2018)

Polling Station Number	Winner Party	Winner Votes (%)	Runner-up Party	Runner-up Votes (%)	Winning Margin Votes (%)	Third Party	Third Party Votes (%)	Other Votes (%)
71	JD(S)	173 (44.13)	INC	111 (28.32)	62 (15.81)	BJP	87 (22.19)	21 (5.36)
72	JD(S)	245 (41.18)	BJP	195 (32.77)	50 (8.41)	INC	101 (16.97)	54 (9.08)
73	JD(S)	493 (51.95)	BJP	304 (32.03)	189 (19.92)	INC	104 (10.96)	48 (5.06)
74	JD(S)	164 (36.94)	BJP	154 (34.68)	10 (2.26)	INC	108 (24.32)	18 (4.05)
75	BJP	195 (46.43)	JD(S)	108 (25.71)	87 (20.72)	INC	103 (24.52)	14 (3.33)
76	BJP	289 (60.59)	JD(S)	127 (26.62)	162 (33.97)	INC	45 (9.43)	16 (3.35)
77	BJP	329 (57.82)	JD(S)	149 (26.19)	180 (31.63)	INC	73 (12.83)	18 (3.16)
78	BJP	404 (46.01)	JD(S)	251 (28.59)	153 (17.42)	INC	196 (22.32)	27 (3.08)
79	BJP	161 (43.63)	JD(S)	122 (33.06)	39 (10.57)	INC	74 (20.05)	12 (3.25)
80	BJP	277 (49.82)	JD(S)	161 (28.96)	116 (20.86)	INC	97 (17.45)	21 (3.78)
81	JD(S)	274 (37.95)	BJP	212 (29.36)	62 (8.59)	INC	209 (28.95)	27 (3.74)
82	JD(S)	351 (35.49)	BJP	330 (33.37)	21 (2.12)	INC	254 (25.68)	54 (5.46)
83	JD(S)	252 (35.2)	BJP	244 (34.08)	8 (1.12)	INC	185 (25.84)	35 (4.89)
84	INC	217 (48.12)	BJP	137 (30.38)	80 (17.74)	JD(S)	62 (13.75)	35 (7.76)
85	BJP	307 (62.27)	JD(S)	89 (18.05)	218 (44.22)	INC	74 (15.01)	23 (4.67)
86	BJP	222 (39.22)	JD(S)	166 (29.33)	56 (9.89)	INC	158 (27.92)	20 (3.53)
87	BJP	559 (56.41)	JD(S)	266 (26.84)	293 (29.57)	INC	125 (12.61)	41 (4.14)
88	BJP	402 (71.91)	JD(S)	80 (14.31)	322 (57.6)	IND (MNG)	40 (7.16)	37 (6.62)
89	BJP	414 (54.91)	JD(S)	138 (18.3)	276 (36.61)	INC	112 (14.85)	90 (11.94)
90	BJP	382 (49.74)	JD(S)	291 (37.89)	91 (11.85)	INC	63 (8.2)	32 (4.17)
91	JD(S)	280 (47.46)	BJP	201 (34.07)	79 (13.39)	INC	71 (12.03)	38 (6.44)
92	BJP	355 (55.73)	JD(S)	232 (36.42)	123 (19.31)	INC	36 (5.65)	14 (2.2)
93	BJP	290 (46.7)	JD(S)	245 (39.45)	45 (7.25)	INC	52 (8.37)	34 (5.48)
94	BJP	316 (54.86)	INC	206 (35.76)	110 (19.1)	JD(S)	41 (7.12)	13 (2.26)
95	BJP	329 (56.24)	JD(S)	130 (22.22)	199 (34.02)	INC	109 (18.63)	17 (2.91)
96	BJP	278 (47.52)	JD(S)	152 (25.98)	126 (21.54)	INC	141 (24.1)	14 (2.39)
97	BJP	350 (61.95)	JD(S)	140 (24.78)	210 (37.17)	INC	60 (10.62)	15 (2.65)
98	BJP	437 (66.21)	JD(S)	172 (26.06)	265 (40.15)	INC	37 (5.61)	14 (2.12)
99	BJP	385 (67.07)	JD(S)	163 (28.4)	222 (38.67)	INC	17 (2.96)	9 (1.57)
100	JD(S)	220 (41.04)	BJP	165 (30.78)	55 (10.26)	INC	126 (23.51)	25 (4.66)
101	BJP	328 (44.5)	JD(S)	327 (44.37)	1 (0.13)	INC	67 (9.09)	15 (2.04)
102	JD(S)	464 (56.59)	BJP	229 (27.93)	235 (28.66)	INC	97 (11.83)	30 (3.66)
103	BJP	441 (66.82)	INC	121 (18.33)	320 (48.49)	JD(S)	73 (11.06)	25 (3.79)
104	BJP	302 (56.45)	JD(S)	170 (31.78)	132 (24.67)	INC	35 (6.54)	28 (5.23)
105	JD(S)	304 (41.53)	BJP	212 (28.96)	92 (12.57)	IND (MDR)	96 (13.11)	120 (16.39)

Contd....

Socio-Economic Amenities - Rural

Access to Education Facilities

Particulars	Number of Village (% of Population)				
	Available	Not Available	If Not Available (Distance of Nearest Facility)		
			A	B	C
Govt. Primary School	227 (95)	61 (5)	49 (4)	12 (2)	0 (0)
Private Primary School	16 (13)	272 (87)	0 (0)	0 (0)	0 (0)
Govt. Middle School	125 (69)	163 (31)	118 (21)	32 (6)	0 (0)
Private Middle School	9 (9)	279 (91)	8 (2)	3 (1)	0 (0)
Govt. Secondary School	48 (36)	240 (64)	171 (44)	42 (12)	3 (0)
Private Secondary School	9 (5)	279 (95)	9 (2)	8 (2)	0 (0)
Govt. Senior Secondary School	12 (10)	276 (90)	86 (29)	100 (31)	74 (23)
Private Senior Secondary School	1 (2)	287 (98)	11 (4)	4 (1)	0 (0)
Govt. Arts and Science Degree College	1 (1)	287 (99)	24 (10)	79 (25)	172 (58)
Private Arts and Science Degree College	0 (0)	288 (100)	0 (0)	4 (1)	8 (5)
Govt. Engineering College	0 (0)	288 (100)	0 (0)	0 (0)	0 (0)
Private Engineering College	0 (0)	288 (100)	0 (0)	5 (3)	283 (97)
Govt. Medicine College	0 (0)	288 (100)	0 (0)	0 (0)	4 (1)
Private Medicine College	0 (0)	288 (100)	38 (17)	28 (13)	218 (69)
Govt. Management Institute	1 (1)	287 (99)	7 (2)	15 (4)	42 (12)
Private Management Institute	0 (0)	288 (100)	2 (0)	22 (7)	184 (69)
Govt. Polytechnic	0 (0)	288 (100)	13 (7)	61 (21)	194 (66)
Private Polytechnic	0 (0)	288 (100)	0 (0)	2 (0)	18 (6)
Govt. Vocational Training School/ITI	2 (1)	286 (99)	17 (8)	61 (20)	117 (37)
Private Vocational Training School/ITI	1 (1)	287 (99)	2 (0)	18 (6)	70 (26)
Govt. Non Formal Training Centre	0 (0)	288 (100)	13 (5)	30 (12)	118 (41)
Private Non Formal Training Centre	0 (0)	288 (100)	5 (4)	46 (13)	76 (25)
Govt. School For Disabled	0 (0)	288 (100)	0 (0)	0 (0)	176 (64)
Private School For Disabled	0 (0)	288 (100)	0 (0)	2 (0)	110 (35)
Government Others	13 (18)	275 (82)	0 (0)	2 (1)	268 (80)
Private Others	0 (0)	288 (100)	0 (0)	2 (0)	3 (1)

Note : Distance A : Less than 5 km; B : Between 5-10 km; C : 10+ km.; Source : Data Analysis is based on 2011 Census.

DISCLAIMER

The Terms of Use and Disclaimer of Datanet India Private Limited (hereinafter referred to as "Datanet") for use of this analysis report of **Turuvekere Assembly Constituency (Turuvekere Vidhan Sabha)** :-

1. **Assembly Factbook™** is a Registered Trade Mark owned by Datanet.
2. All the maps are sketched and graphical representation only and have not been drawn to the scale and also not to represent the actual geographical area or boundary of the unit.
3. The data for the aforesaid analysis is based on authentic sources and has been culled from the various publications of Census, CSO and NSSO for district and block level data, various central and state government departments, Central & State Elections Commissions and the concerned Returning Officers' releases, Electoral Rolls, Election results and allied publications, internal assessment, surveys, estimates and analysis. Therefore, certain adjustment of data at micro level may have been done to arrive closer to the macro data.
4. Data have been provided on an "As Is" and "As AVAILABLE" basis
5. The colours shown in the maps or diagram and charts of a particular party, alliance or AC are indicative and do not represent them.
6. This publication which includes maps, sheets, graphs and data would be the property under copyright of Datanet only. The user may use these for its internal study, analysis and research purposes. It's public display, re-selling or any commercial uses by the user are not allowed.
7. Datanet has taken due care and caution in compilation and processing of data and allied information, but does not guarantee the accuracy, adequacy or completeness of any information/analysis and will be not responsible for any errors or omissions or for the results obtained from the use of such information/analysis.
8. All the contents for the publication have been culled from various authentic sources and Datanet reasonably believes such sources to be reliable, but does not make any representations, express or implied as to the accuracy or fitness of use of such information. The information or contents of the information/analysis do not constitute advice and should not be relied upon in making (or refraining from making) any decision. Any reliance placed upon the information provided by Datanet is the sole responsibility and strictly at the user's risk.
9. In no event will Datanet be liable for any damages (including, without limitation, damages for loss of business projects, or loss of profits) arising in contract, tort or otherwise from the use of or inability to use any of its contents, or from any action taken (or refrained from being taken) as a result of using the analysis or any of its contents. Datanet its directors, owners, editors, officials, employees, distributor and agents or any associate will not be liable for any errors in the information contained or any consequences arising from the use of the contents of the provided information/analysis.
10. If any provision of these terms and conditions is held invalid or illegal or unenforceable for any reason by any court of competent jurisdiction, such provision shall be severed and the remainder of provisions of the terms and conditions shall continue in full force and effect as if the Term of Use had been executed with the invalid, illegal or unenforceable provision eliminated.
11. If there are any discrepancies in the information provided, please bring it to attention of Datanet for suitable rectification measures.

**Buy Online This Complete Book At
Datanet India eBooks Store**

www.indiastatpublications.com

or go directly at

[http://www.indiastatpublications.com/
Assembly_factbook/Karnataka/Tumkur/ Turuvekere](http://www.indiastatpublications.com/Assembly_factbook/Karnataka/Tumkur/Turuvekere)

 **indiastat**elections

ISBN - 978-93-5802-116-5



9 789358 021165