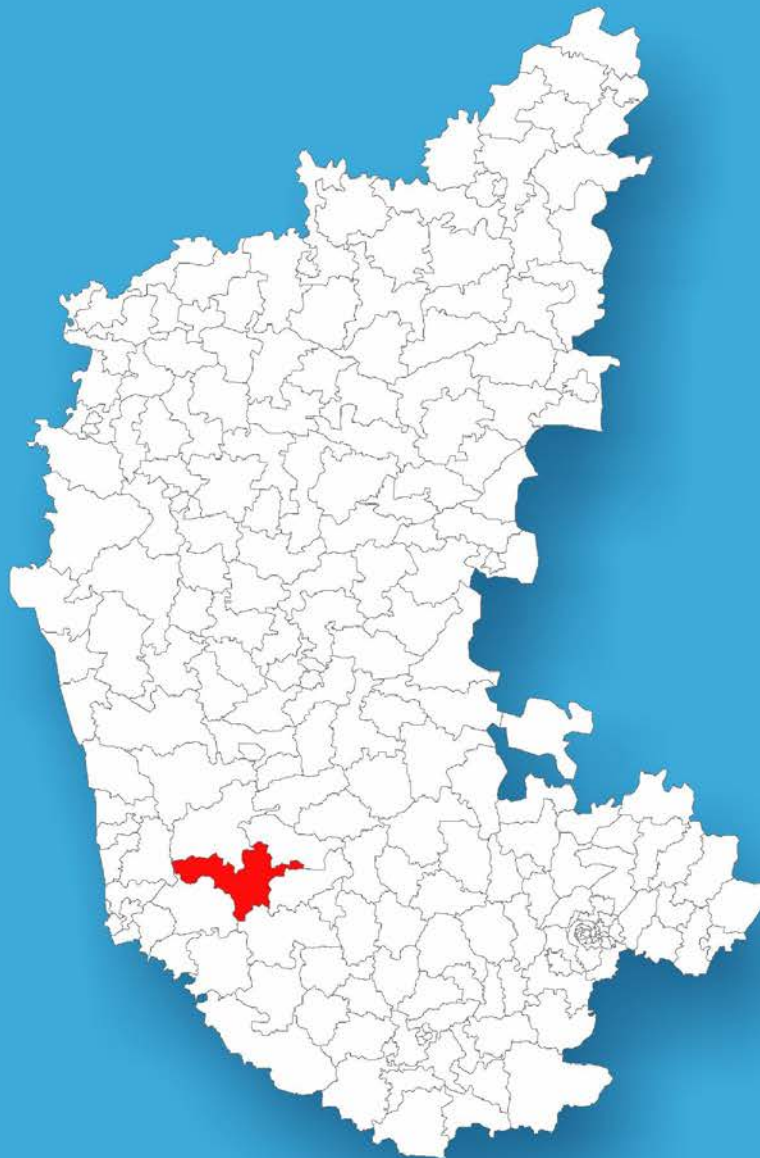




Karnataka

Assembly Factbook™

Mudigere Assembly Constituency



Key Electoral Data of Mudigere
Assembly Constituency (Vidhan Sabha)

Karnataka
Assembly FactbookTM
Mudigere Assembly Constituency



Mudigere Vidhan Sabha

Editor & Director

Dr. R.K. Thukral

Research Editor

Dr. Shafeeq Rahman

Compiled, Researched and Published by Datanet India Pvt. Ltd.

D-100, 1st Floor,

Okhla Industrial Area, Phase-I,

New Delhi- 110020.

Ph.: 91-11- 43580781-84

Email : support@india-stat-publications.com

Website : <http://www.india-statelections.com>

Online Book Store :

www.india-stat-publications.com

Report No. : AFB/KA-124-0124

ISBN : 978-93-5802-237-7

First Edition : January, 2018

Seventh Updated Edition : January, 2024

Price : Rs.11500/-

US\$ 310

© Datanet India Pvt. Ltd.

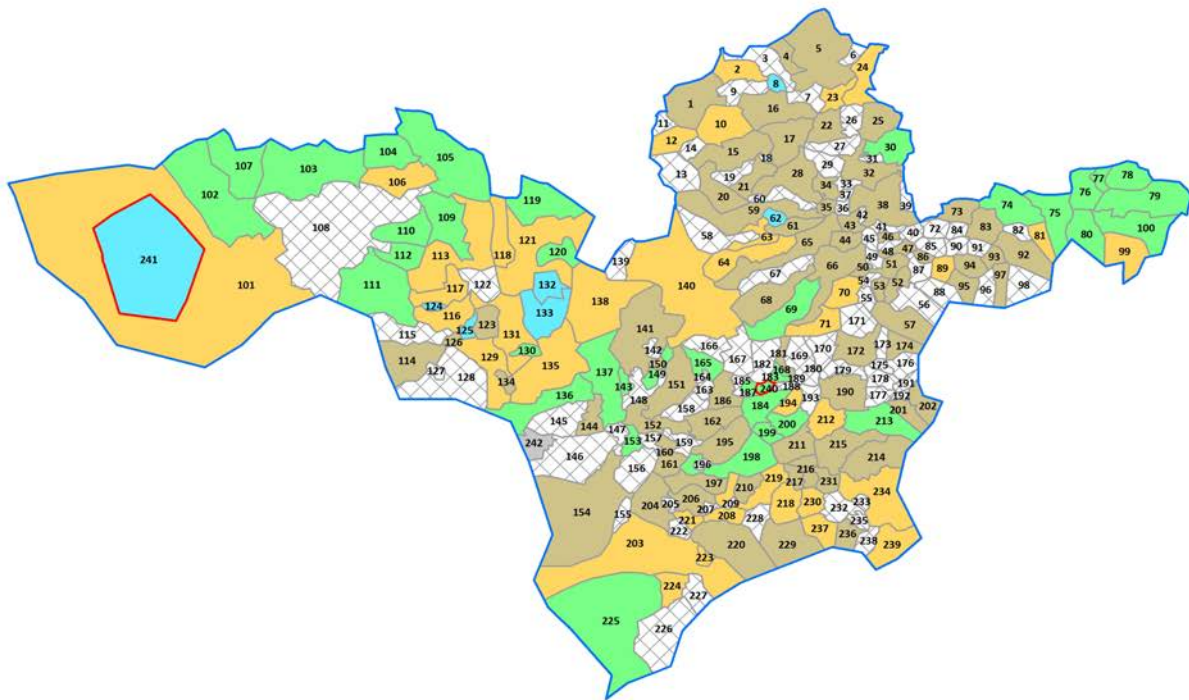
All rights reserved. No part of this book may be reproduced, stored in a retrieval system or transmitted in any form or by any means, mechanical photocopying, photographing, scanning, recording or otherwise without the prior written permission of the publisher. Please refer to Disclaimer at page no. 192 for the use of this publication.

Printed in India

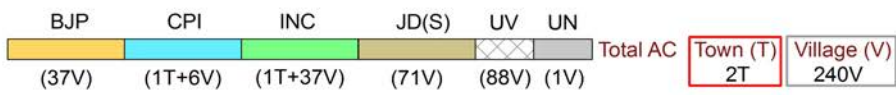
No.	Particulars	Page No.
	Introduction	
1	Assembly Constituency - (Vidhan Sabha) at a Glance Features of Assembly as per Delimitation Commission of India (2008)	1-2
	Location and Political Maps	
2	Location Map Boundaries of Assembly Constituency - (Vidhan Sabha) in District Boundaries of Assembly Constituency under Parliamentary Constituency - (Lok Sabha) Town & Village-wise Winner Parties- 2019, 2018, 2014, 2013 and 2009	3-11
	Administrative Setup (2011)	
3	District Sub-district Towns Villages Inhabited Villages Uninhabited Villages Village Panchayat Intermediate Panchayat	12-24
	Demographics (2011)	
4	Population Households Rural/Urban Population Towns and Villages by Population Size Sex Ratio (Total & 0-6 Years) Religious Population Social Population Literacy Rate	25-26
	Electoral Features	
5	Important Dates of Last Elections Held Electors by Gender Service Electors Voters Voters Turnout Polling Stations & Average Number of Electors per Polling Station Electors by Age Group Present Elected Representatives	27-32
	Historical Summary Election Results	
6	Vote Share of Major Parties Winning Margin (Number & Percentage) Polarity of Parties Summary Result of Assembly Segment of Parliamentary Elections 2019, 2014, 2009, 2004 and 1999 Summary Result of Assembly Elections 2023, 2018, 2013, 2008, 2004, 1999, 1994, 1989, 1985, 1983, 1978, 1972, 1967 and 1962	33-55
	Polling Station Level Election Results	
7	Name and Number of Polling Station 2019, 2018, 2014, 2013 and 2009 Polling Station-wise Electors, Voters & Voters Turnout 2019, 2018, 2014, 2013 and 2009 Polling Station wise Elections Results 2019, 2018, 2014, 2013 and 2009	56-172
	Share of Assembly Constituency	
8	Share of Assembly Constituency - (Vidhan Sabha) in State, District and Parliamentary Constituency - (Lok Sabha)	173
	Socio-Economic Amenities (2011)	
9	Access to Administrative Units Agricultural, Manufacturing and Industrial Commodities Demographic Indicators Education Health & Manpower Drinking Water Supply Sanitation Entertainment and Recreations Infrastructure Power Food Allocation Distribution and Marketing of Agriculture Commodities Infrastructure Transport and Road Infrastructure Communication Banking and Financial Services Land Use Irrigation Source	175-189
10	Abbreviation & Sources	190-191
11	Disclaimer	192

Location & Political Map

Town & Village-wise Winner Parties in Mudigere Assembly Constituency under State Assembly Election (AE) (No. 124) - 2013



Town
240 - Mudigere
241 - Kudremukh



UV : Unspecified Village
UN : Uninhabited Village

Administrative Setup

List of Village Panchayat & Intermediate Panchayat (Block) Name - 2011

Village Name	Village Panchayat Name	Intermediate Panchayat Name
Abrugodige Estate	Sunkasale	Mudigere
Aladagudde	Vasthare	Chikmagalur
Aldur	Aldur	Chikmagalur
Alekhan Estate	Javali	Mudigere
Ambinakodige	Kalasa	Mudigere
Amble	Amble	Chikmagalur
Anajooru	Chinniga	Mudigere
Angadi	Hanthuru	Mudigere
Aniganahalli	Basaravalli	Chikmagalur
Anoor	Anooru	Chikmagalur
Aradavalli	Hariharadahalli	Chikmagalur
Aramane Thalagur	Sunkasale	Mudigere
Arenahalli	Basagal	Chikmagalur
Arenoor	Basaravalli	Chikmagalur
Attigere	Taruve	Mudigere
Avathi	Avathi	Chikmagalur
B.Hosahalli	B.Hosahalli	Mudigere
Bagamane	Byaravalli (Mallanduru)	Chikmagalur
Baganeheddaluru	Byaravalli (Mallanduru)	Chikmagalur
Baggasagodu	Phalguni	Mudigere
Bakki	Tripura	Mudigere
Balehalli	Kelagoor	Chikmagalur
Balige	Sunkasale	Mudigere
Balur	Balur	Mudigere
Balur Estate	Balur	Mudigere
Banakal	Banakal	Mudigere
Banavara	Malaloor	Chikmagalur
Bankenahalli	Phalguni	Mudigere
Bannur	Doddamagaravalli	Chikmagalur

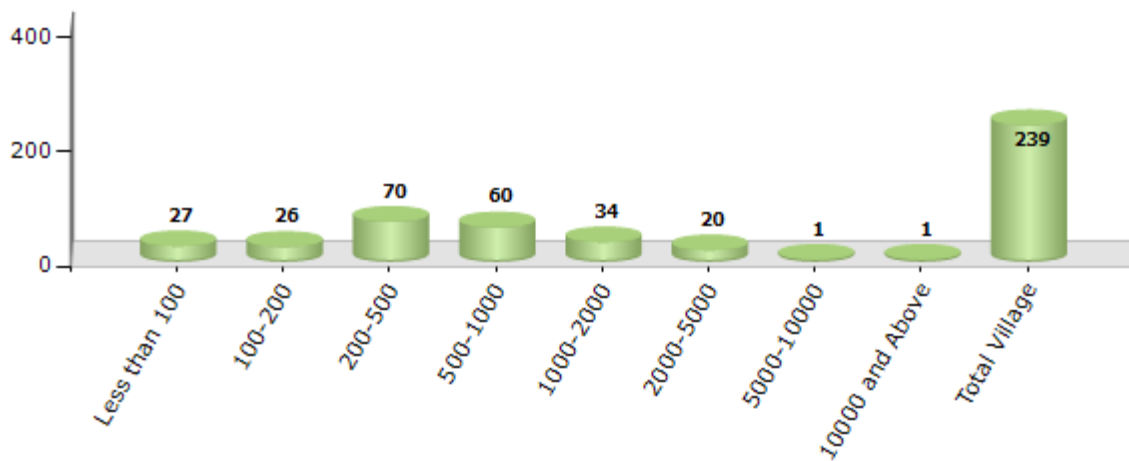
Contd....

Demographic

Number of Villages by Population Size - 2011

Less than 100	100-200	200-500	500-1000	1000-2000	2000-5000	5000-10000	10000 and Above	Total Village
27	26	70	60	34	20	1	1	239

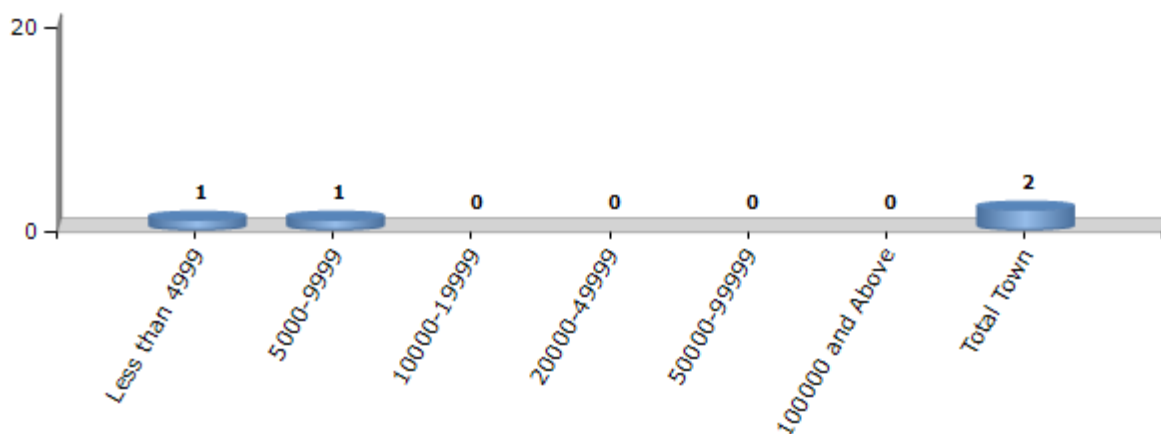
Number of Villages by Population Size - 2011



Number of Towns by Population Size - 2011

Less than 4999	5000-9999	10000-19999	20000-49999	50000-99999	100000 and Above	Total Town
1	1	0	0	0	0	2

Number of Towns by Population Size - 2011

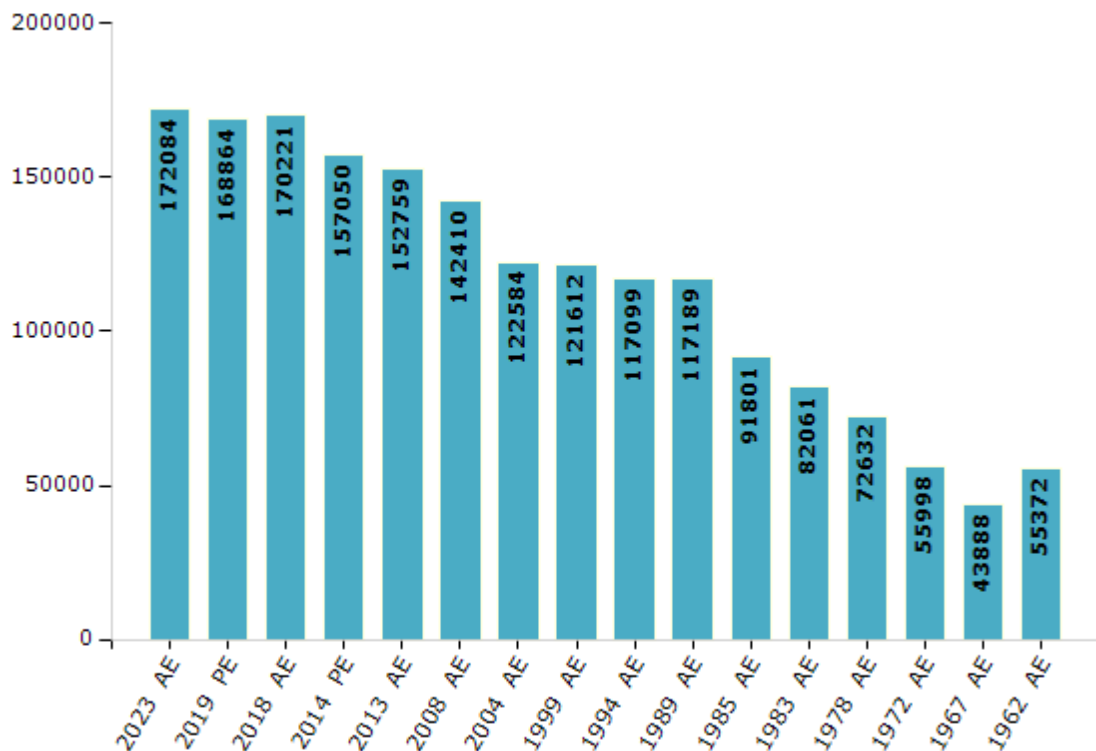


Electoral Features

Electors by Male & Female

Year	Male	Female	Others	Total	Year	Male	Female	Others	Total
2023 AE	84179	87899	6	172084	1999 AE	61005	60607	-	121612
2019 PE	83143	85712	9	168864	1994 AE	59727	57372	-	117099
2018 AE	83992	86218	11	170221	1989 AE	60468	56721	-	117189
2014 PE	78184	78858	8	157050	1985 AE	48231	43570	-	91801
2013 AE	76227	76532	0	152759	1983 AE	44004	38057	-	82061
2009 PE	-	-	-	-	1978 AE	39202	33430	-	72632
2008 AE	70782	71628	-	142410	1972 AE	29128	26870	-	55998
2004 PE	-	-	-	-	1967 AE	-	-	-	43888
2004 AE	61104	61480	-	122584	1962 AE	-	-	-	55372
1999 PE	-	-	-	-	1957 AE	-	-	-	-

Number of Electors

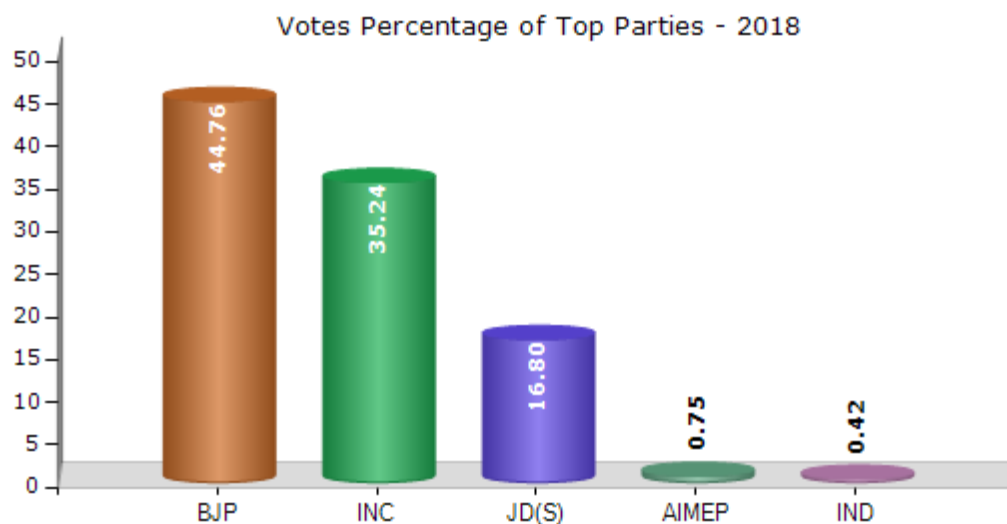


Note : AE : Assembly Election, PE : Assembly Segment of Parliamentary Election

Historical Summary Election Results

Summary Result of Assembly Election - 2018

Candidate Name	Party	Votes	Votes %
M.P.Kumaraswamy	BJP	58783	44.76
Motamma	INC	46271	35.24
B.B.Ningaiah	JD(S)	22063	16.8
Anilkumar.N.G	AIMEP	988	0.75
S.Venkaresh	IND	555	0.42
Ningaiah	PMPT	397	0.3
Muniyappa	IND	346	0.26
Nanjunda Master	IND	259	0.2
Arun Kumar.B	IND	187	0.14
Laxmana	RPSN	148	0.11
	NOTA	1321	1.01



Polling Station Level Election Results

Number and Name of Polling Stations (PS) (2018)

Number of Polling Stations	Name of Polling Stations	Number of Polling Stations	Name of Polling Stations
1	Govt. Higher Primary School Kundadi-Megal	22	Govt. Higher Primary School, Haluvalli
2	Govt. L.P.S., Kolakodu	23	Grama Panchayat Building, Kalasa
3	Govt. L.P.S., Manninapal	24	Govt. Higher Primary School Kalmakki
4	Village Panchayat Office, Byaravalli (Mallanduru)	25	G H P B S, Kalasa
5	Govt. L.P.S, Thotadamakki	26	Govt. Junior College, Kalasa
6	Govt. Higher Primary School, (East Zone), Mandur	27	Govt. Higher Primary Girls School, Kalasa
7	Govt. H.P. School, Byaravalli	28	Anganavadi Building Ganapathi Katte Kalasa
8	Govt. L.P.S, Masagali	29	Govt. L.P.P School, K. Kelaguru
9	Govt. H.P.S, Beranagodu	30	Govt. L.P. School, Yaduru
10	Govt. H.P.S, Totaduru	31	Govt. H.P. School, Hemmki (Down Side)
11	Govt. H.P. School, Horanadu	32	Govt. H.P. School, Hemmki (Upper Part)
12	Govt. L.P. School, Baliege	33	Govt. H.P. School, Bettadamalali
13	Govt. Higher Primary School, Talagodu	34	Govt. H.P. School, Jola Dalu
14	Govt. H.P.S, Danihalli	35	Govt. H.P. School, Tallihalla
15	Govt. L.P.S., Kalamallanduru	36	Govt. H.P. School Keremakki
16	Govt. H.P.S, Channagondanahalli	37	Govt. L.P. School, Bygoru
17	Govt. L.P.S. Uluvagilu	38	G.L.P. School, Kanathi
18	Govt. Higher Primary School, Jakkanahalli	39	G.P. Office, Basarvalli
19	Govt. H.P.S, Avathi	40	G.L.P. School, Karagadde
20	Govt. Lower Primary School, Tanudi	41	G.H.P. School, Samse (North Left Side)
21	Govt. H.P.S., Munnurpal	42	G.H.P. School, Samse

Contd....

Polling Station Level Election Results

Polling Station-wise Votes Secured by Overall Top Five Parties in Mudigere Assembly in Assembly Election (AE) under Udupi Chikmagalur Parliamentary Constituency in Karnataka (2018)

Number of Polling Station	Winner - M.P. Kumaraswamy (BJP)	Runner-up - Motamma (INC)	3rd - B.B. Ningaiah (JD(S))	4th - Anilkumar. N.G (AIMEP)	5th - S.Venkatesh (IND)	NOTA	Other	Total Votes Secured
36	205	81	150	3	1	3	2	445
37	212	66	82	3	3	3	4	373
38	167	97	77	4	0	4	4	353
39	281	62	145	2	3	8	4	505
40	197	107	181	3	3	3	8	502
41	238	260	154	6	2	6	7	673
42	144	66	85	8	2	5	6	316
43	369	299	142	9	6	11	13	849
44	335	149	185	8	3	10	10	700
45	123	127	8	2	0	3	1	264
46	441	107	236	5	6	15	20	830
47	258	397	71	5	3	7	6	747
48	365	85	67	6	1	3	4	531
49	255	89	127	6	1	7	3	488
50	256	439	97	3	1	6	7	809
51	166	319	65	0	0	5	3	558
52	280	115	216	4	2	3	7	627
53	318	103	156	5	3	10	10	605
54	276	340	40	4	1	2	3	666
55	229	180	96	2	3	1	1	512
56	307	177	63	2	4	5	9	567
57	187	120	94	8	7	7	14	437
58	421	328	167	6	3	19	22	966
59	105	138	24	1	2	5	2	277
60	179	218	40	2	2	2	2	445
60A	279	135	39	3	2	7	5	470
61	269	156	14	0	2	8	4	453
62	265	96	24	3	3	3	8	402
63	169	103	271	4	2	3	6	558
64	203	105	179	2	2	5	4	500
65	126	303	112	2	4	11	10	568
66	326	236	150	7	6	8	9	742
67	332	172	323	2	4	8	7	848
68	280	136	94	5	3	9	7	534
69	199	186	36	5	3	6	6	441

Contd....

Polling Station Level Election Results

Winner, Runner-up and 3rd Party Position & Winning Margin According to Polling Stations in Mudigere Assembly in Assembly Election (AE) under Udupi Chikmagalur Parliamentary Constituency in Karnataka (2018)

Polling Station Number	Winner Party	Winner Votes (%)	Runner-up Party	Runner-up Votes (%)	Winning Margin Votes (%)	Third Party	Third Party Votes (%)	Other Votes (%)
70	BJP	242 (47.36)	INC	182 (35.62)	60 (11.74)	JD(S)	74 (14.48)	13 (2.54)
71	JD(S)	299 (46.07)	BJP	246 (37.9)	53 (8.17)	INC	85 (13.1)	19 (2.93)
72	JD(S)	324 (50)	BJP	184 (28.4)	140 (21.6)	INC	130 (20.06)	10 (1.54)
73	INC	278 (71.65)	BJP	77 (19.85)	201 (51.8)	JD(S)	22 (5.67)	11 (2.84)
74	INC	271 (46.32)	JD(S)	170 (29.06)	101 (17.26)	BJP	133 (22.74)	11 (1.88)
75	BJP	252 (46.58)	INC	217 (40.11)	35 (6.47)	JD(S)	59 (10.91)	13 (2.4)
76	INC	538 (56.34)	BJP	288 (30.16)	250 (26.18)	JD(S)	102 (10.68)	27 (2.83)
77	BJP	275 (54.13)	INC	202 (39.76)	73 (14.37)	JD(S)	24 (4.72)	7 (1.38)
78	INC	245 (33.84)	BJP	244 (33.7)	1 (0.14)	JD(S)	212 (29.28)	23 (3.18)
79	INC	246 (38.14)	BJP	201 (31.16)	45 (6.98)	JD(S)	179 (27.75)	19 (2.95)
80	BJP	158 (48.17)	INC	75 (22.87)	83 (25.3)	JD(S)	69 (21.04)	26 (7.93)
81	INC	216 (64.86)	BJP	85 (25.53)	131 (39.33)	JD(S)	24 (7.21)	8 (2.4)
82	BJP	355 (48.97)	INC	313 (43.17)	42 (5.8)	JD(S)	37 (5.1)	20 (2.76)
83	INC	243 (40.57)	BJP	242 (40.4)	1 (0.17)	JD(S)	96 (16.03)	18 (3.01)
84	BJP	357 (73.46)	INC	70 (14.4)	287 (59.06)	JD(S)	49 (10.08)	10 (2.06)
85	BJP	408 (49.33)	INC	222 (26.84)	186 (22.49)	JD(S)	175 (21.16)	22 (2.66)
86	INC	99 (37.08)	BJP	93 (34.83)	6 (2.25)	JD(S)	62 (23.22)	13 (4.87)
87	BJP	84 (51.53)	INC	44 (26.99)	40 (24.54)	JD(S)	21 (12.88)	14 (8.59)
88	INC	213 (36.98)	BJP	208 (36.11)	5 (0.87)	JD(S)	139 (24.13)	16 (2.78)
89	INC	217 (39.82)	BJP	201 (36.88)	16 (2.94)	JD(S)	107 (19.63)	20 (3.67)
90	JD(S)	196 (34.88)	BJP	178 (31.67)	18 (3.21)	INC	154 (27.4)	34 (6.05)
91	BJP	196 (42.33)	INC	175 (37.8)	21 (4.53)	JD(S)	82 (17.71)	10 (2.16)
92	BJP	278 (43.51)	INC	270 (42.25)	8 (1.26)	JD(S)	67 (10.49)	24 (3.76)
93	JD(S)	192 (32.76)	INC	182 (31.06)	10 (1.7)	BJP	162 (27.65)	50 (8.53)
94	INC	402 (62.13)	BJP	204 (31.53)	198 (30.6)	JD(S)	27 (4.17)	14 (2.16)
95	INC	232 (42.88)	BJP	197 (36.41)	35 (6.47)	JD(S)	105 (19.41)	7 (1.29)
96	JD(S)	237 (48.77)	BJP	131 (26.95)	106 (21.82)	INC	109 (22.43)	9 (1.85)
97	BJP	362 (39.43)	JD(S)	274 (29.85)	88 (9.58)	INC	263 (28.65)	19 (2.07)
98	INC	211 (44.42)	BJP	193 (40.63)	18 (3.79)	JD(S)	66 (13.89)	5 (1.05)
99	INC	494 (54.95)	BJP	336 (37.37)	158 (17.58)	JD(S)	43 (4.78)	26 (2.89)
100	BJP	310 (59.05)	JD(S)	135 (25.71)	175 (33.34)	INC	71 (13.52)	9 (1.71)
100A	BJP	338 (58.58)	JD(S)	135 (23.4)	203 (35.18)	INC	96 (16.64)	8 (1.39)
101	BJP	177 (50.14)	INC	112 (31.73)	65 (18.41)	JD(S)	54 (15.3)	10 (2.83)
102	INC	243 (54.73)	BJP	147 (33.11)	96 (21.62)	JD(S)	44 (9.91)	10 (2.25)
103	INC	315 (67.74)	BJP	81 (17.42)	234 (50.32)	JD(S)	54 (11.61)	15 (3.23)

Contd....

Socio-Economic Amenities - Rural

Access to Education Facilities

Particulars	Number of Village (% of Population)				
	Available	Not Available	If Not Available (Distance of Nearest Facility)		
			A	B	C
Govt. Primary School	194 (96)	45 (4)	37 (3)	7 (0)	0 (0)
Private Primary School	15 (20)	224 (80)	0 (0)	0 (0)	0 (0)
Govt. Middle School	116 (79)	123 (21)	75 (11)	46 (9)	0 (0)
Private Middle School	13 (16)	226 (84)	1 (0)	0 (0)	0 (0)
Govt. Secondary School	42 (45)	197 (55)	76 (22)	73 (17)	26 (7)
Private Secondary School	11 (16)	228 (84)	5 (1)	7 (2)	8 (2)
Govt. Senior Secondary School	7 (7)	232 (93)	38 (20)	69 (24)	82 (23)
Private Senior Secondary School	5 (4)	234 (96)	3 (1)	14 (12)	22 (9)
Govt. Arts and Science Degree College	4 (1)	235 (99)	11 (6)	52 (25)	166 (59)
Private Arts and Science Degree College	3 (7)	236 (93)	0 (0)	0 (0)	5 (4)
Govt. Engineering College	0 (0)	239 (100)	0 (0)	0 (0)	1 (1)
Private Engineering College	0 (0)	239 (100)	1 (0)	10 (5)	227 (93)
Govt. Medicine College	0 (0)	239 (100)	29 (13)	20 (7)	153 (63)
Private Medicine College	0 (0)	239 (100)	2 (2)	8 (3)	27 (11)
Govt. Management Institute	0 (0)	239 (100)	0 (0)	0 (0)	21 (9)
Private Management Institute	1 (1)	238 (99)	4 (1)	20 (8)	192 (81)
Govt. Polytechnic	0 (0)	239 (100)	9 (6)	47 (22)	171 (69)
Private Polytechnic	0 (0)	239 (100)	0 (0)	2 (1)	10 (2)
Govt. Vocational Training School/ITI	1 (1)	238 (99)	8 (4)	26 (11)	134 (58)
Private Vocational Training School/ITI	3 (2)	236 (98)	1 (1)	18 (8)	49 (16)
Govt. Non Formal Training Centre	0 (0)	239 (100)	9 (6)	45 (20)	167 (66)
Private Non Formal Training Centre	0 (0)	239 (100)	0 (0)	4 (2)	14 (5)
Govt. School For Disabled	1 (1)	238 (99)	2 (1)	12 (5)	203 (85)
Private School For Disabled	0 (0)	239 (100)	0 (0)	0 (0)	21 (8)
Government Others	1 (1)	238 (99)	0 (0)	16 (6)	222 (93)
Private Others	0 (0)	239 (100)	0 (0)	0 (0)	0 (0)

Note : Distance A : Less than 5 km; B : Between 5-10 km; C : 10+ km.; Source : Data Analysis is based on 2011 Census.

DISCLAIMER

The Terms of Use and Disclaimer of Datanet India Private Limited (hereinafter referred to as "Datanet") for use of this analysis report of **Mudigere Assembly Constituency (Mudigere Vidhan Sabha)** :-

1. **Assembly Factbook™** is a Registered Trade Mark owned by Datanet.
2. All the maps are sketched and graphical representation only and have not been drawn to the scale and also not to represent the actual geographical area or boundary of the unit.
3. The data for the aforesaid analysis is based on authentic sources and has been culled from the various publications of Census, CSO and NSSO for district and block level data, various central and state government departments, Central & State Elections Commissions and the concerned Returning Officers' releases, Electoral Rolls, Election results and allied publications, internal assessment, surveys, estimates and analysis. Therefore, certain adjustment of data at micro level may have been done to arrive closer to the macro data.
4. Data have been provided on an "As Is" and "As AVAILABLE" basis
5. The colours shown in the maps or diagram and charts of a particular party, alliance or AC are indicative and do not represent them.
6. This publication which includes maps, sheets, graphs and data would be the property under copyright of Datanet only. The user may use these for its internal study, analysis and research purposes. It's public display, re-selling or any commercial uses by the user are not allowed.
7. Datanet has taken due care and caution in compilation and processing of data and allied information, but does not guarantee the accuracy, adequacy or completeness of any information/analysis and will be not responsible for any errors or omissions or for the results obtained from the use of such information/analysis.
8. All the contents for the publication have been culled from various authentic sources and Datanet reasonably believes such sources to be reliable, but does not make any representations, express or implied as to the accuracy or fitness of use of such information. The information or contents of the information/analysis do not constitute advice and should not be relied upon in making (or refraining from making) any decision. Any reliance placed upon the information provided by Datanet is the sole responsibility and strictly at the user's risk.
9. In no event will Datanet be liable for any damages (including, without limitation, damages for loss of business projects, or loss of profits) arising in contract, tort or otherwise from the use of or inability to use any of its contents, or from any action taken (or refrained from being taken) as a result of using the analysis or any of its contents. Datanet its directors, owners, editors, officials, employees, distributor and agents or any associate will not be liable for any errors in the information contained or any consequences arising from the use of the contents of the provided information/analysis.
10. If any provision of these terms and conditions is held invalid or illegal or unenforceable for any reason by any court of competent jurisdiction, such provision shall be severed and the remainder of provisions of the terms and conditions shall continue in full force and effect as if the Term of Use had been executed with the invalid, illegal or unenforceable provision eliminated.
11. If there are any discrepancies in the information provided, please bring it to attention of Datanet for suitable rectification measures.

**Buy Online This Complete Book At
Datanet India eBooks Store**

www.indiastatpublications.com

or go directly at

[http://www.indiastatpublications.com/
Assembly_factbook/Karnataka/Udupi_Chikmagalur/ Mudigere](http://www.indiastatpublications.com/Assembly_factbook/Karnataka/Udupi_Chikmagalur/Mudigere)

 **india**stat**elections**

