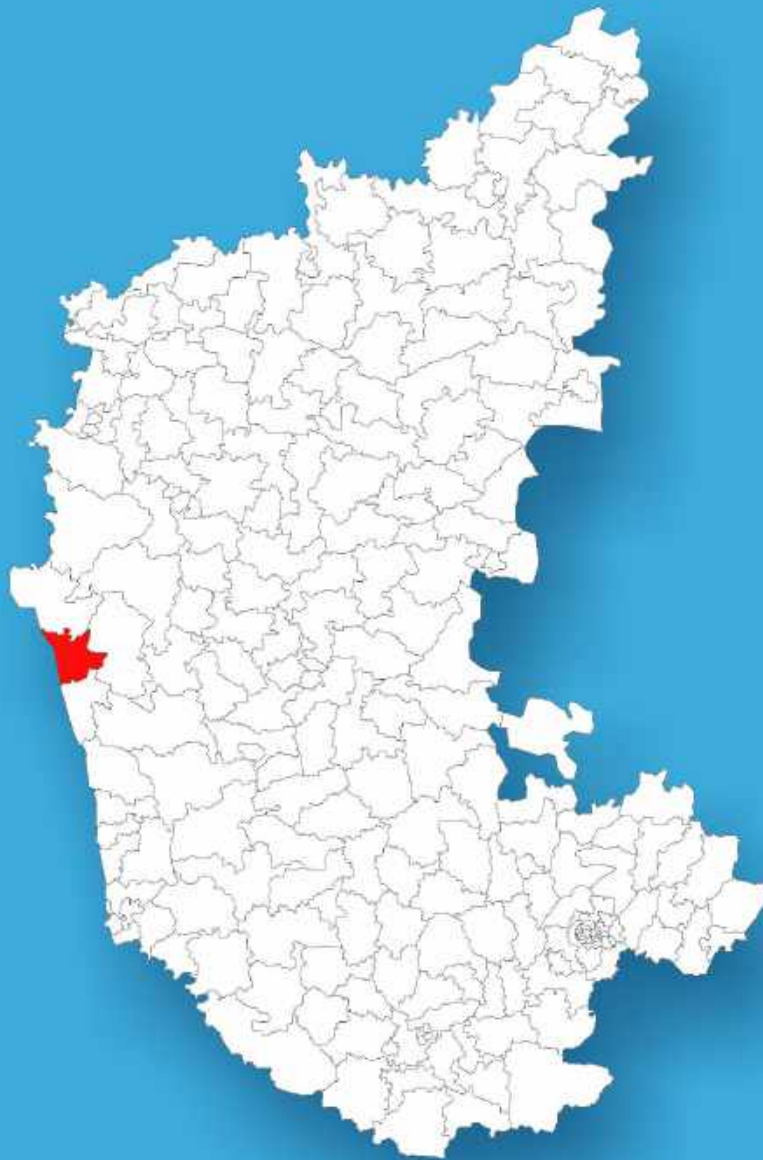




Karnataka

# Assembly Factbook™

Kumta Assembly Constituency

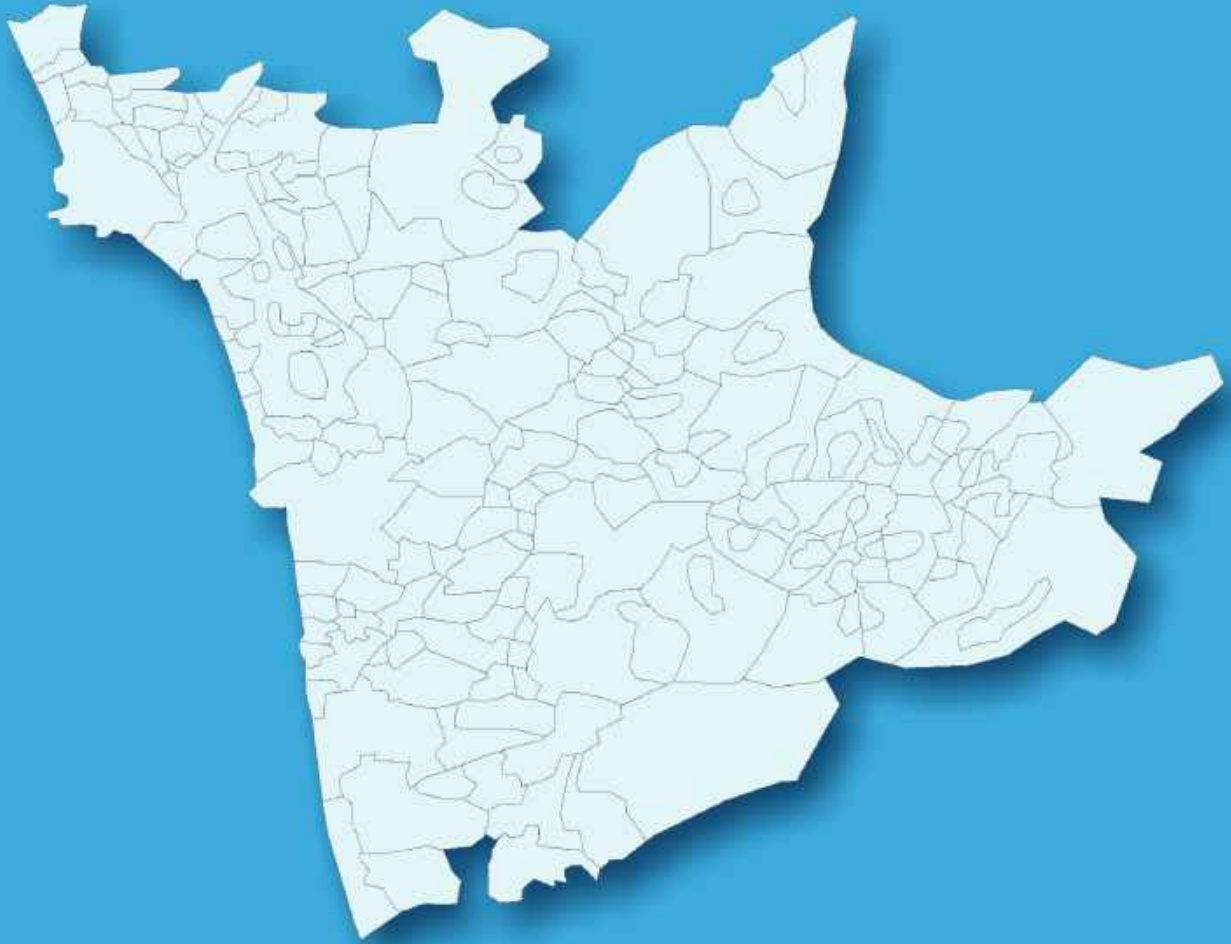


Key Electoral Data of Kumta  
Assembly Constituency (Vidhan Sabha)

Karnataka

# Assembly Factbook™

Kumta Assembly Constituency



Kumta Vidhan Sabha

## **Editor & Director**

Dr. R.K. Thukral

## **Research Editor**

Dr. Shafeeq Rahman

## **Compiled, Researched and Published by Datanet India Pvt. Ltd.**

D-100, 1st Floor,

Okhla Industrial Area, Phase-I,

New Delhi- 110020.

Ph.: 91-11- 43580781-84

Email : support@indiastatpublications.com

Website : <http://www.indiastatelections.com>

## **Online Book Store :**

[www.indiastatpublications.com](http://www.indiastatpublications.com)

**Report No. :** AFB/KA-078-0125

**ISBN :** 978-93-5802-315-2

**First Edition :** January, 2018

**Eighth Updated Edition :** January, 2025

**Price :** Rs.11500/-

US\$ 310

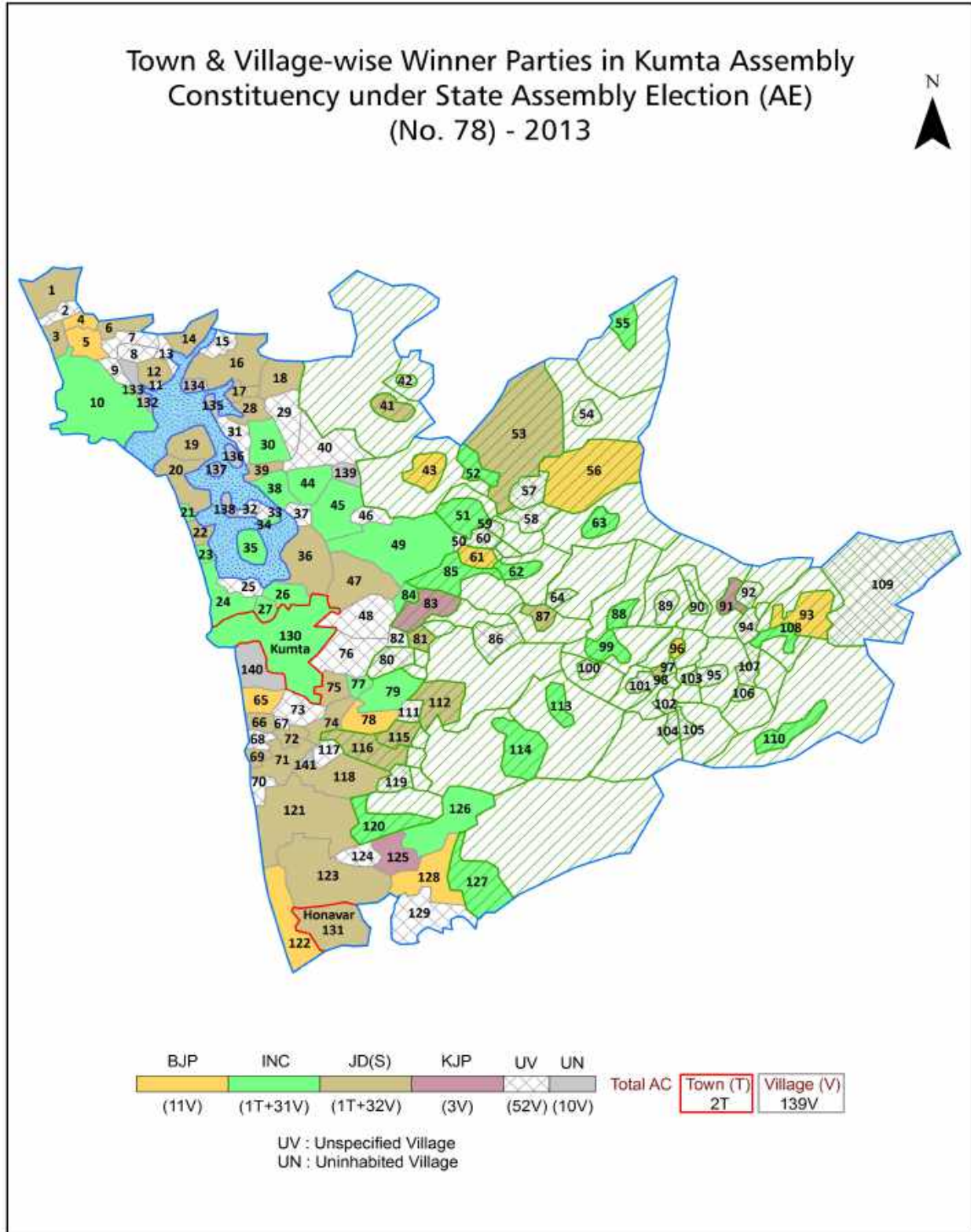
## **© Datanet India Pvt. Ltd.**

All rights reserved. No part of this book may be reproduced, stored in a retrieval system or transmitted in any form or by any means, mechanical photocopying, photographing, scanning, recording or otherwise without the prior written permission of the publisher. Please refer to Disclaimer at page no. 184 for the use of this publication.

Printed in India

No.	Particulars	Page No.
	<b>Introduction</b>	
1	Assembly Constituency - (Vidhan Sabha) at a Glance   Features of Assembly as per Delimitation Commission of India (2008)	1-2
	<b>Location and Political Maps</b>	
2	Location Map   Boundaries of Assembly Constituency - (Vidhan Sabha) in District   Boundaries of Assembly Constituency under Parliamentary Constituency - (Lok Sabha)   Town & Village-wise Winner Parties- 2024, 2023, 2019, 2014, 2013 and 2009	3-11
	<b>Administrative Setup (2011)</b>	
3	District   Sub-district   Towns   Villages   Inhabited Villages   Uninhabited Villages   Village Panchayat   Intermediate Panchayat	12-19
	<b>Demographics (2011)</b>	
4	Population   Households   Rural/Urban Population   Towns and Villages by Population Size   Sex Ratio (Total & 0-6 Years)   Religious Population   Social Population   Literacy Rate	20-21
	<b>Electoral Features</b>	
5	Important Dates of Last Elections Held   Electors by Gender   Service Electors   Voters   Voters Turnout   Polling Stations & Average Number of Electors per Polling Station   Electors by Age Group   Present Elected Representatives	22-27
	<b>Historical Summary Election Results</b>	
6	Vote Share of Major Parties   Winning Margin (Number & Percentage)   Polarity of Parties   Summary Result of Assembly Segment of Parliamentary Elections 2024, 2019, 2014, 2009, 2004 and 1999   Summary Result of Assembly Elections 2023, 2018, 2013, 2008, 2004, 1999, 1994, 1989, 1985, 1983, 1978, 1972, 1967, 1962 and 1957	28-51
	<b>Polling Station Level Election Results</b>	
7	Name and Number of Polling Station 2024, 2023, 2019, 2014, 2013 and 2009   Polling Station-wise Electors, Voters & Voters Turnout 2024, 2023, 2019, 2014, 2013 and 2009   Polling Station wise Elections Results 2024, 2023, 2019, 2014, 2013 and 2009	52-164
	<b>Share of Assembly Constituency</b>	
8	Share of Assembly Constituency - (Vidhan Sabha) in State, District and Parliamentary Constituency - (Lok Sabha)	165
	<b>Socio-Economic Amenities (2011)</b>	
9	Access to Administrative Units   Agricultural, Manufacturing and Industrial Commodities   Demographic Indicators   Education   Health & Manpower   Drinking Water Supply   Sanitation   Entertainment and Recreations Infrastructure   Power   Food Allocation Distribution and Marketing of Agriculture Commodities Infrastructure   Transport and Road Infrastructure   Communication   Banking and Financial Services   Land Use   Irrigation Source	167-181
10	<b>Abbreviation &amp; Sources</b>	182-183
11	<b>Disclaimer</b>	184

Location & Political Map



## Administrative Setup

### List of Village Panchayat & Intermediate Panchayat (Block) Name - 2011

Village Name	Village Panchayat Name	Intermediate Panchayat Name
Abbolli	Santeguli	Kumta
Aghanashini	Kagal	Kumta
Aigalkurve	Kodakani	Kumta
Algar	Santeguli	Kumta
Alkod	Alkod	Kumta
Alvalli	Murur	Kumta
Anegundi	Alkod	Kumta
Antravalli	Deevgi	Kumta
Aunsalli	Navilgone	Honavar
Baad	Baad	Kumta
Bangane	Soppinahosalli	Kumta
Bankikodla	Hanehalli	Kumta
Bargi	Bargi	Kumta
Bargigazani	Bargi	Kumta
Basolli	Soppinahosalli	Kumta
Bastikeri	Santeguli	Kumta
Bellangi	Alkod	Kumta
Betkuli	Bargi	Kumta
Bhandival	Alkod	Kumta
Bhavikodla	Nadumaskeri	Kumta
Bidrageri	Hanehalli	Kumta
Chandavar	Chandavar	Honavar
Chatrakurve	Mirjan	Kumta
Chimmolli	Soppinahosalli	Kumta
Chitragi	Holangadde	Kumta
Devagiri	Devagiri	Kumta
Divalli	Santeguli	Kumta
Divgi	Deevgi	Kumta
Duggur	Karki	Honavar

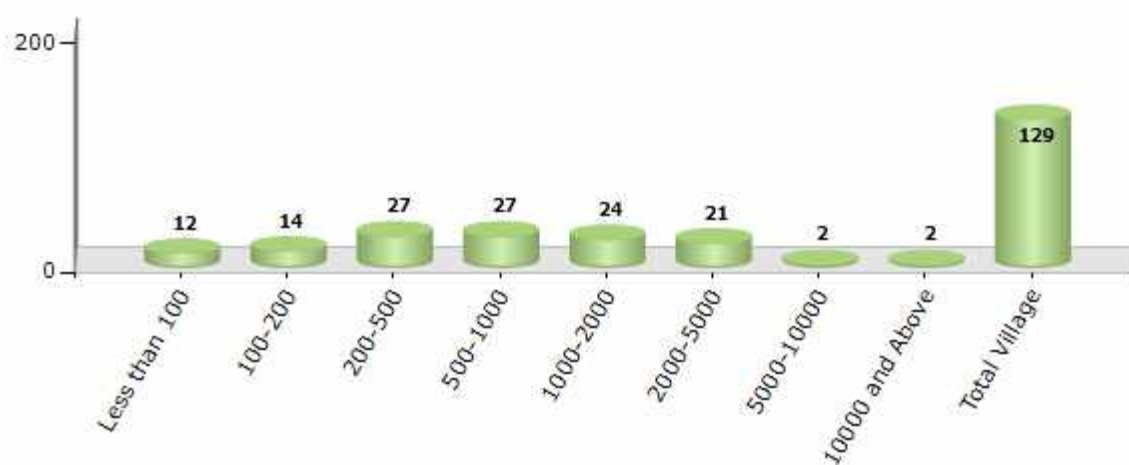
Contd....

## Demographic

### Number of Villages by Population Size - 2011

Less than 100	100-200	200-500	500-1000	1000-2000	2000-5000	5000-10000	10000 and Above	Total Village
12	14	27	27	24	21	2	2	129

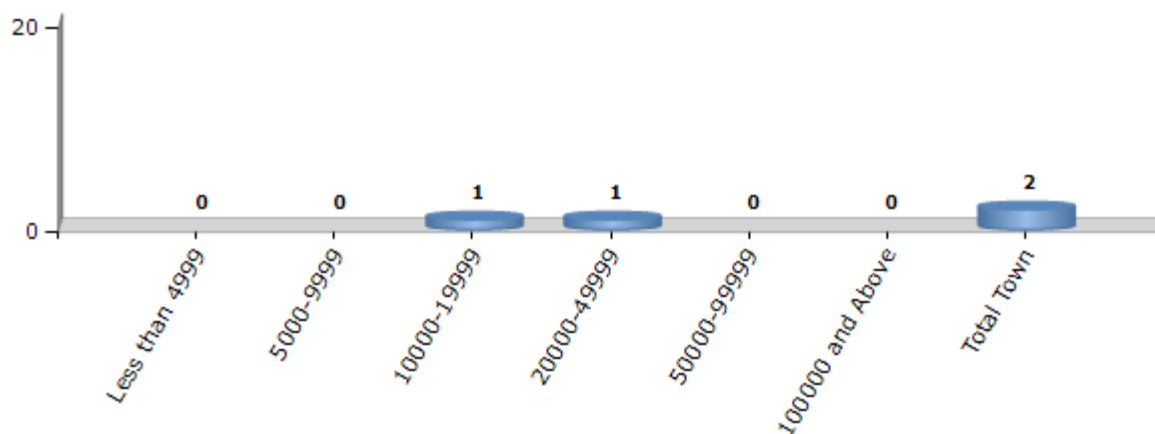
Number of Villages by Population Size - 2011



### Number of Towns by Population Size - 2011

Less than 4999	5000-9999	10000-19999	20000-49999	50000-99999	100000 and Above	Total Town
0	0	1	1	0	0	2

Number of Towns by Population Size - 2011

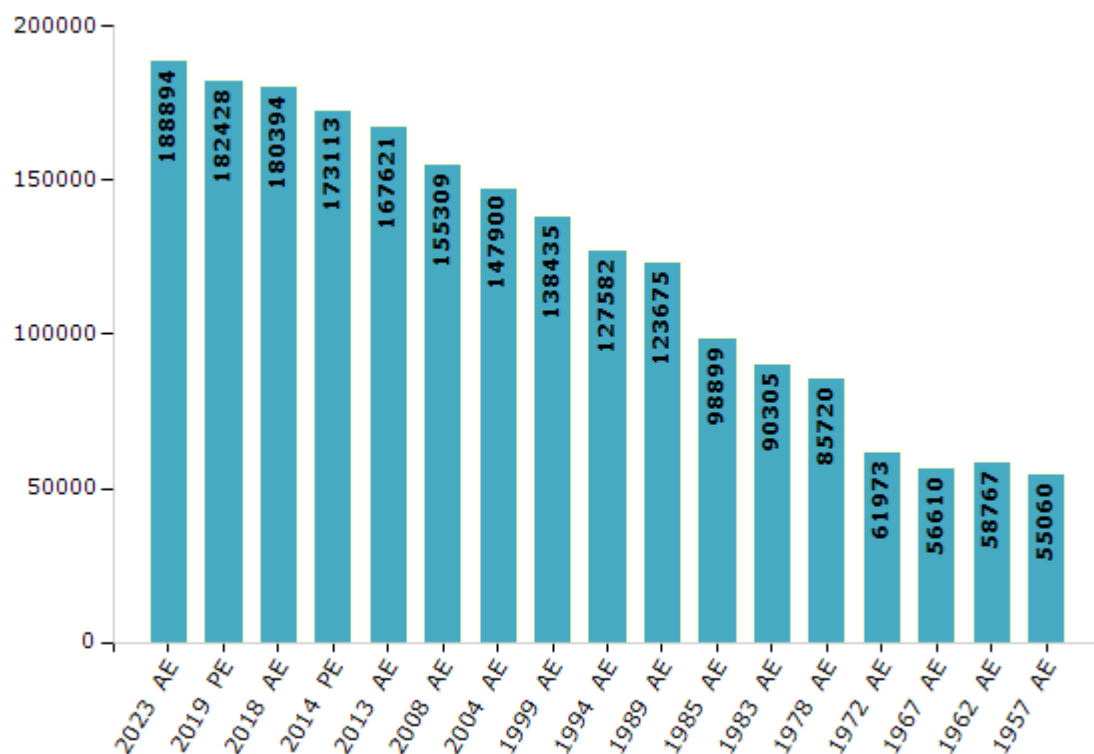


## Electoral Features

### Electors by Male & Female

Year	Male	Female	Others	Total	Year	Male	Female	Others	Total
2023 AE	94403	94488	3	188894	1999 AE	70675	67760	-	138435
2019 PE	91751	90675	2	182428	1994 AE	65125	62457	-	127582
2018 AE	90876	89517	1	180394	1989 AE	63234	60441	-	123675
2014 PE	87966	85147	0	173113	1985 AE	50754	48145	-	98899
2013 AE	85555	82065	1	167621	1983 AE	45996	44309	-	90305
2009 PE	-	-	-	-	1978 AE	43621	42099	-	85720
2008 AE	79887	75422	-	155309	1972 AE	31659	30314	-	61973
2004 PE	-	-	-	-	1967 AE	-	-	-	56610
2004 AE	75645	72255	-	147900	1962 AE	-	-	-	58767
1999 PE	-	-	-	-	1957 AE	-	-	-	55060

Number of Electors



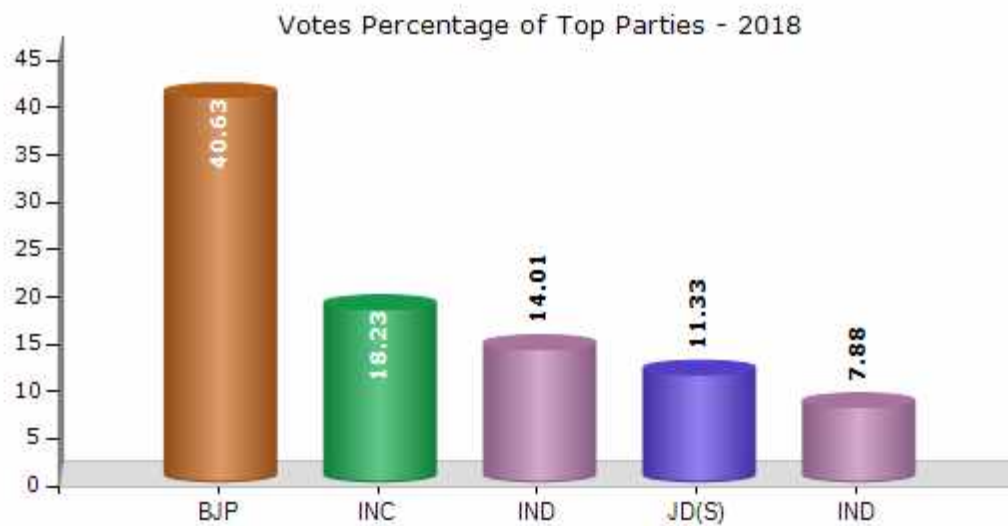
Note : AE : Assembly Election, PE : Assembly Segment of Parliamentary Election



## Historical Summary Election Results

### Summary Result of Assembly Election - 2018

Candidate Name	Party	Votes	Votes %
Dinakar Keshav Shetty	BJP	59392	40.63
Sharada Mohan Shetty	INC	26642	18.23
Suraj Naik Soni	IND	20474	14.01
Nayak Pradeep Dayanand	JD(S)	16561	11.33
Yashodhar G. Naik	IND	11512	7.88
Krishna Jatti Gouda	IND	5089	3.48
Mohan Baglu Patgar	INCP	1274	0.87
Nagraj .N. Naik	AIMEP	984	0.67
Sumana Hegde	IND	758	0.52
Prashant Shankar Naik	IND	531	0.36
Ganesh Amkush Gouda	IND	412	0.28
Nagraj Shridhar Shet	RJB	356	0.24
	NOTA	2192	1.5



## Polling Station Level Election Results

### Number and Name of Polling Stations (PS) (2023)

Number of Polling Stations	Name of Polling Stations	Number of Polling Stations	Name of Polling Stations
1	Government Senior Primary School Gangekolla	22	Government Junior Primary School, Rudrapada, Bjjjura (East Side)
2	Kittoor Rani Chennamma Residential School Nadumaskeri	23	Government Junior Primary School, Rudrapada, Bjjjura, Basavanbhaga (West)
3	Government Higher Primary School, Gangavali	24	Government Higher Primary School, Torquay (Right Side)
4	Government Higher Primary School, Harumaskeri	25	Government Higher Primary School, Torquay (Left Side)
5	Govt Senior Primary School Bankikodla	26	Government Model Senior Primary School, Madanageri (Northern Part)
6	Government Senior Primary School No-2, Bavikodla	27	Government Higher Primary School Madanageri (West Side)
7	Government Senior Primary School No-2, Bavikodla	28	Govt Higher Primary School Hiregutti (North Side)
8	Govt Senior Primary School Hanehalli	29	Government Higher Primary School Hiregutti (South Side) New Building
9	Anandashram High School Bankikodla	30	Sri Sadananda N Shanabhaga Government Higher Primary School, Devarabole
10	Government Higher Primary School (East)	31	Government Higher Primary School, Newnagar Moraba
11	Government Higher Primary School (West)	32	Government Higher Primary School (Nagur) Honnekere
12	Gram Panchayat Office Gokarna	33	Government Senior Primary School, Kudgundi
13	Government Model Senior Primary School, Gokarna	34	Government Senior Primary Urdu School, Betkuli
14	Govt Senior Primary School Sanikatta	35	Government Senior Primary School Betkuli
15	Government Junior Primary School Mudangi	36	Govt Junior Primary School Kolimanjaguni
16	Government Higher Primary School, Tadadi	37	Govt Higher Primary School Aghanashini
17	Government Higher Primary School Tadadi (Old Building)	38	Govt Higher Primary School Aghanashini
18	Government Junior Primary School Dandebhaga, Gokarna	39	Government Higher Primary School Aghanashini Upper Keri (East Side)
19	Government Higher Primary School No.2 Gokarna (Left Side)	40	Government Higher Primary School, Burgi (East Side)
20	Government Senior Primary School No.2 Gokarna (Right Side)	41	Government Higher Primary School Burgi (West)
21	Government Model Senior Primary School, Gokarna	42	Government Higher Primary School Gudakagala (West Side)

Contd....

## Polling Station Level Election Results

### Polling Station-wise Votes Secured by Overall Top Five Parties in Kumta Assembly in Assembly Election (AE) under Uttara Kannada Parliamentary Constituency in Karnataka (2023)

Number of Polling Station	Winner - Dinakar Keshav Shetty (BJP)	Runner-up - Suraj Naik Soni (JD(S))	3rd - Alva Nivedith (INC)	4th - Ishwar Gouda (IND)	5th - Roopa Gajanan Naik (AAP)	NOTA	Other	Total Votes Secured
36	121	62	26	5	4	3	2	223
37	277	160	45	43	5	19	6	555
38	221	337	22	19	3	8	13	623
39	408	435	52	46	9	22	28	1000
40	532	439	48	12	8	18	12	1069
41	350	279	31	6	8	6	5	685
42	338	158	250	3	6	7	4	766
43	247	273	106	7	12	1	7	653
44	212	287	61	11	4	8	6	589
45	244	394	194	6	10	7	14	869
46	177	655	38	7	14	10	14	915
47	62	345	396	10	16	3	9	841
48	102	421	29	9	16	9	9	595
49	220	132	202	3	6	3	6	572
50	266	201	205	2	12	7	5	698
51	273	350	20	13	4	8	6	674
52	182	255	18	5	5	9	8	482
53	218	136	25	8	9	7	5	408
54	84	165	152	14	5	8	9	437
55	241	346	184	5	7	15	10	808
56	242	320	36	11	8	6	9	632
57	274	378	188	17	21	11	14	903
58	304	267	134	7	7	14	9	742
59	392	147	19	4	4	18	8	592
60	196	157	33	6	6	4	2	404
61	119	338	24	5	6	2	1	495
62	316	265	50	23	7	8	17	686
63	214	91	17	10	5	6	8	351
64	251	259	47	7	3	8	5	580
65	327	138	40	10	6	11	3	535
66	251	215	35	17	6	2	11	537
67	361	214	40	32	10	13	14	684
68	384	450	52	60	12	28	16	1002
69	117	260	35	21	10	12	12	467
70	365	296	77	7	9	23	8	785

Contd....

## Polling Station Level Election Results

### Winner, Runner-up and 3rd Party Position & Winning Margin According to Polling Stations in Kumta Assembly in Assembly Election (AE) under Uttara Kannada Parliamentary Constituency in Karnataka (2023)

Polling Station Number	Winner Party	Winner Votes (%)	Runner-up Party	Runner-up Votes (%)	Winning Margin Votes (%)	Third Party	Third Party Votes (%)	Other Votes (%)
71	BJP	433 (49.77)	JD(S)	323 (37.13)	110 (12.64)	INC	56 (6.44)	58 (6.67)
72	JD(S)	182 (55.83)	BJP	116 (35.58)	66 (20.25)	INC	9 (2.76)	19 (5.83)
73	JD(S)	213 (40.19)	BJP	207 (39.06)	6 (1.13)	INC	42 (7.92)	68 (12.83)
74	JD(S)	423 (51.03)	BJP	266 (32.09)	157 (18.94)	INC	56 (6.76)	84 (10.13)
75	JD(S)	370 (56.75)	BJP	210 (32.21)	160 (24.54)	INC	48 (7.36)	24 (3.68)
76	JD(S)	300 (68.03)	BJP	116 (26.3)	184 (41.73)	INC	17 (3.85)	8 (1.81)
77	JD(S)	637 (62.45)	BJP	232 (22.75)	405 (39.7)	INC	72 (7.06)	79 (7.75)
78	BJP	465 (57.69)	JD(S)	230 (28.54)	235 (29.15)	INC	59 (7.32)	52 (6.45)
79	BJP	430 (45.31)	JD(S)	406 (42.78)	24 (2.53)	INC	54 (5.69)	59 (6.22)
80	BJP	304 (47.8)	JD(S)	247 (38.84)	57 (8.96)	INC	39 (6.13)	46 (7.23)
81	JD(S)	418 (61.47)	BJP	135 (19.85)	283 (41.62)	IND (IG)	56 (8.24)	71 (10.44)
82	JD(S)	232 (47.06)	BJP	214 (43.41)	18 (3.65)	INC	15 (3.04)	32 (6.49)
83	JD(S)	301 (51.54)	BJP	218 (37.33)	83 (14.21)	INC	39 (6.68)	26 (4.45)
84	BJP	325 (46.3)	JD(S)	315 (44.87)	10 (1.43)	INC	22 (3.13)	40 (5.7)
85	BJP	372 (56.36)	JD(S)	237 (35.91)	135 (20.45)	INC	23 (3.48)	28 (4.24)
86	JD(S)	374 (44)	BJP	363 (42.71)	11 (1.29)	INC	72 (8.47)	41 (4.82)
87	JD(S)	444 (45.68)	BJP	302 (31.07)	142 (14.61)	INC	147 (15.12)	79 (8.13)
88	BJP	476 (50.75)	JD(S)	303 (32.3)	173 (18.45)	INC	116 (12.37)	43 (4.58)
89	BJP	301 (37.67)	INC	243 (30.41)	58 (7.26)	JD(S)	213 (26.66)	42 (5.26)
90	BJP	196 (41)	JD(S)	196 (41)	0 (0)	INC	75 (15.69)	11 (2.3)
91	BJP	243 (41.82)	JD(S)	210 (36.14)	33 (5.68)	INC	90 (15.49)	38 (6.54)
92	BJP	500 (46.38)	JD(S)	419 (38.87)	81 (7.51)	INC	93 (8.63)	66 (6.12)
93	JD(S)	548 (58.3)	BJP	213 (22.66)	335 (35.64)	IND (IG)	91 (9.68)	88 (9.36)
94	BJP	424 (57.07)	JD(S)	239 (32.17)	185 (24.9)	INC	28 (3.77)	52 (7)
95	JD(S)	365 (42.49)	BJP	350 (40.75)	15 (1.74)	INC	105 (12.22)	39 (4.54)
96	JD(S)	289 (47.22)	BJP	232 (37.91)	57 (9.31)	INC	60 (9.8)	31 (5.07)
97	JD(S)	285 (47.82)	BJP	250 (41.95)	35 (5.87)	INC	49 (8.22)	12 (2.01)
98	BJP	175 (47.04)	JD(S)	104 (27.96)	71 (19.08)	INC	79 (21.24)	14 (3.76)
99	JD(S)	593 (58.25)	BJP	278 (27.31)	315 (30.94)	INC	79 (7.76)	68 (6.68)
100	INC	797 (81.33)	BJP	109 (11.12)	688 (70.21)	JD(S)	53 (5.41)	21 (2.14)
101	JD(S)	398 (39.8)	BJP	322 (32.2)	76 (7.6)	INC	229 (22.9)	51 (5.1)
102	BJP	248 (48.72)	JD(S)	143 (28.09)	105 (20.63)	INC	108 (21.22)	10 (1.96)
103	JD(S)	309 (47.69)	BJP	205 (31.64)	104 (16.05)	INC	95 (14.66)	39 (6.02)
104	BJP	455 (44.43)	JD(S)	451 (44.04)	4 (0.39)	INC	60 (5.86)	58 (5.66)
105	BJP	297 (47.07)	JD(S)	227 (35.97)	70 (11.1)	INC	75 (11.89)	32 (5.07)

Contd....

## Socio-Economic Amenities - Rural

### Access to Education Facilities

Particulars	Number of Village (% of Population)				
	Available	Not Available	If Not Available (Distance of Nearest Facility)		
			A	B	C
Govt. Primary School	112 (99)	17 (1)	13 (1)	4 (0)	0 (0)
Private Primary School	11 (26)	118 (74)	0 (0)	0 (0)	0 (0)
Govt. Middle School	76 (90)	53 (10)	35 (7)	14 (2)	0 (0)
Private Middle School	9 (26)	120 (74)	2 (1)	1 (0)	0 (0)
Govt. Secondary School	25 (51)	104 (49)	60 (32)	37 (15)	7 (2)
Private Secondary School	4 (6)	125 (94)	0 (0)	0 (0)	0 (0)
Govt. Senior Secondary School	7 (22)	122 (78)	30 (24)	27 (32)	58 (18)
Private Senior Secondary School	1 (2)	128 (98)	0 (0)	0 (0)	6 (2)
Govt. Arts and Science Degree College	1 (1)	128 (99)	6 (7)	19 (15)	64 (26)
Private Arts and Science Degree College	1 (8)	128 (92)	8 (8)	17 (27)	13 (8)
Govt. Engineering College	0 (0)	129 (100)	0 (0)	0 (0)	33 (16)
Private Engineering College	0 (0)	129 (100)	0 (0)	1 (0)	95 (84)
Govt. Medicine College	0 (0)	129 (100)	0 (0)	0 (0)	129 (100)
Private Medicine College	0 (0)	129 (100)	0 (0)	0 (0)	0 (0)
Govt. Management Institute	0 (0)	129 (100)	0 (0)	0 (0)	0 (0)
Private Management Institute	0 (0)	129 (100)	0 (0)	0 (0)	0 (0)
Govt. Polytechnic	0 (0)	129 (100)	1 (1)	12 (9)	15 (9)
Private Polytechnic	0 (0)	129 (100)	6 (8)	24 (31)	71 (43)
Govt. Vocational Training School/ITI	0 (0)	129 (100)	4 (6)	27 (30)	71 (43)
Private Vocational Training School/ITI	0 (0)	129 (100)	2 (1)	7 (8)	18 (11)
Govt. Non Formal Training Centre	3 (15)	126 (85)	5 (3)	26 (21)	85 (54)
Private Non Formal Training Centre	0 (0)	129 (100)	1 (1)	3 (3)	6 (4)
Govt. School For Disabled	0 (0)	129 (100)	0 (0)	1 (1)	41 (27)
Private School For Disabled	0 (0)	129 (100)	2 (1)	1 (1)	84 (71)
Government Others	3 (19)	126 (81)	0 (0)	1 (1)	40 (22)
Private Others	1 (4)	128 (96)	2 (1)	1 (1)	81 (52)

Note : Distance A : Less than 5 km; B : Between 5-10 km; C : 10+ km.; Source : Data Analysis is based on 2011 Census.

## DISCLAIMER

The Terms of Use and Disclaimer of Datanet India Private Limited (hereinafter referred to as "Datanet") for use of this analysis report of **Kumta Assembly Constituency (Kumta Vidhan Sabha)** :-

1. **Assembly Factbook™** is a Registered Trade Mark owned by Datanet.
2. All the maps are sketched and graphical representation only and have not been drawn to the scale and also not to represent the actual geographical area or boundary of the unit.
3. The data for the aforesaid analysis is based on authentic sources and has been culled from the various publications of Census, CSO and NSSO for district and block level data, various central and state government departments, Central & State Elections Commissions and the concerned Returning Officers' releases, Electoral Rolls, Election results and allied publications, internal assessment, surveys, estimates and analysis. Therefore, certain adjustment of data at micro level may have been done to arrive closer to the macro data.
4. Data have been provided on an "As Is" and "As AVAILABLE" basis
5. The colours shown in the maps or diagram and charts of a particular party, alliance or AC are indicative and do not represent them.
6. This publication which includes maps, sheets, graphs and data would be the property under copyright of Datanet only. The user may use these for its internal study, analysis and research purposes. It's public display, re-selling or any commercial uses by the user are not allowed.
7. Datanet has taken due care and caution in compilation and processing of data and allied information, but does not guarantee the accuracy, adequacy or completeness of any information/analysis and will be not responsible for any errors or omissions or for the results obtained from the use of such information/analysis.
8. All the contents for the publication have been culled from various authentic sources and Datanet reasonably believes such sources to be reliable, but does not make any representations, express or implied as to the accuracy or fitness of use of such information. The information or contents of the information/analysis do not constitute advice and should not be relied upon in making (or refraining from making) any decision. Any reliance placed upon the information provided by Datanet is the sole responsibility and strictly at the user's risk.
9. In no event will Datanet be liable for any damages (including, without limitation, damages for loss of business projects, or loss of profits) arising in contract, tort or otherwise from the use of or inability to use any of its contents, or from any action taken (or refrained from being taken) as a result of using the analysis or any of its contents. Datanet its directors, owners, editors, officials, employees, distributor and agents or any associate will not be liable for any errors in the information contained or any consequences arising from the use of the contents of the provided information/analysis.
10. If any provision of these terms and conditions is held invalid or illegal or unenforceable for any reason by any court of competent jurisdiction, such provision shall be severed and the remainder of provisions of the terms and conditions shall continue in full force and effect as if the Term of Use had been executed with the invalid, illegal or unenforceable provision eliminated.
11. If there are any discrepancies in the information provided, please bring it to attention of Datanet for suitable rectification measures.

**Buy Online This Complete Book At  
Datanet India eBooks Store**

[www.indiastatpublications.com](http://www.indiastatpublications.com)

or go directly at

[http://www.indiastatpublications.com/  
Assembly\\_factbook/Karnataka/Uttara\\_Kannada/ Kumta](http://www.indiastatpublications.com/Assembly_factbook/Karnataka/Uttara_Kannada/Kumta)

 **india**stat**elections**

ISBN : 978-93-5802-315-2



9 789358 023152