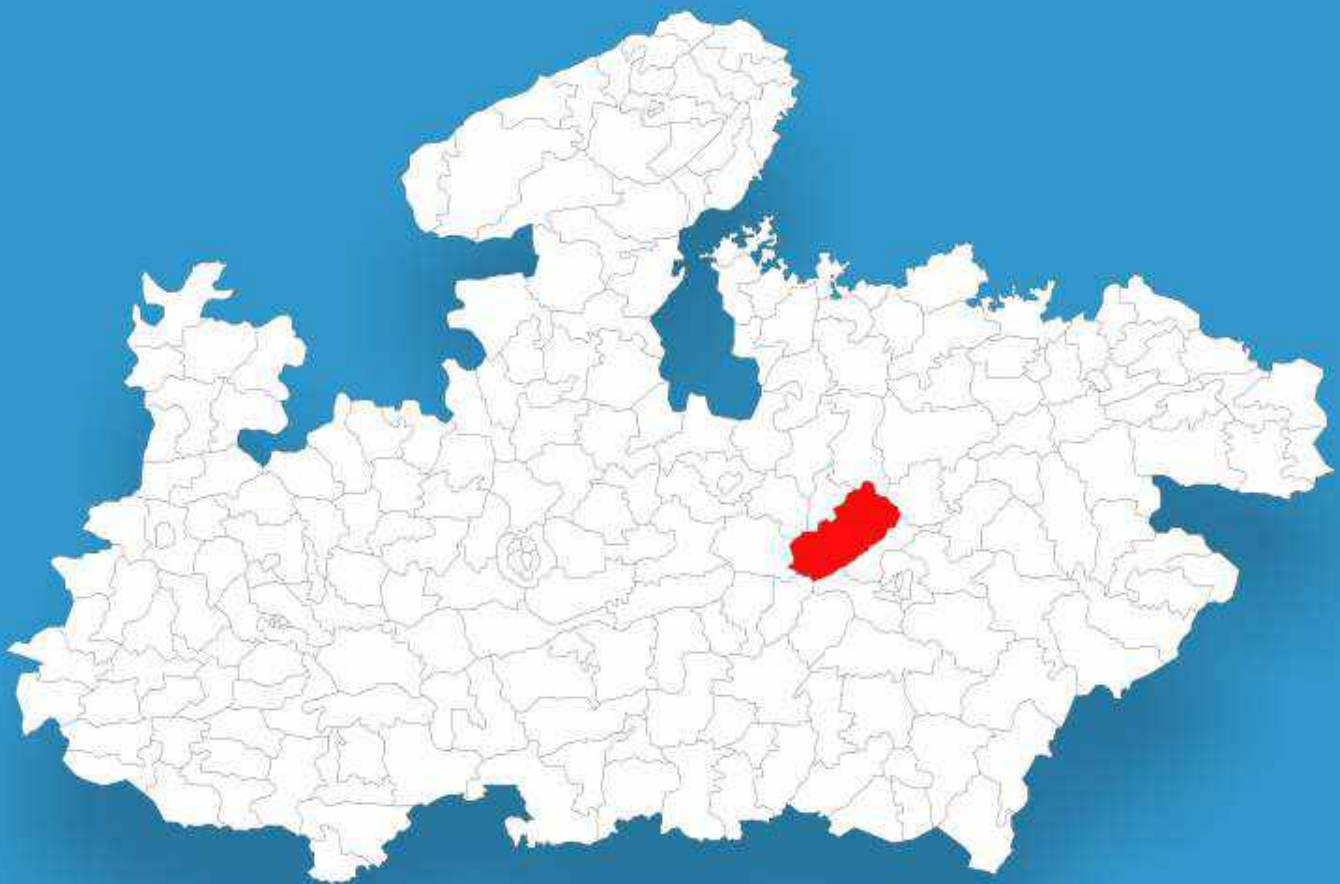




Madhya Pradesh

Assembly Factbook™

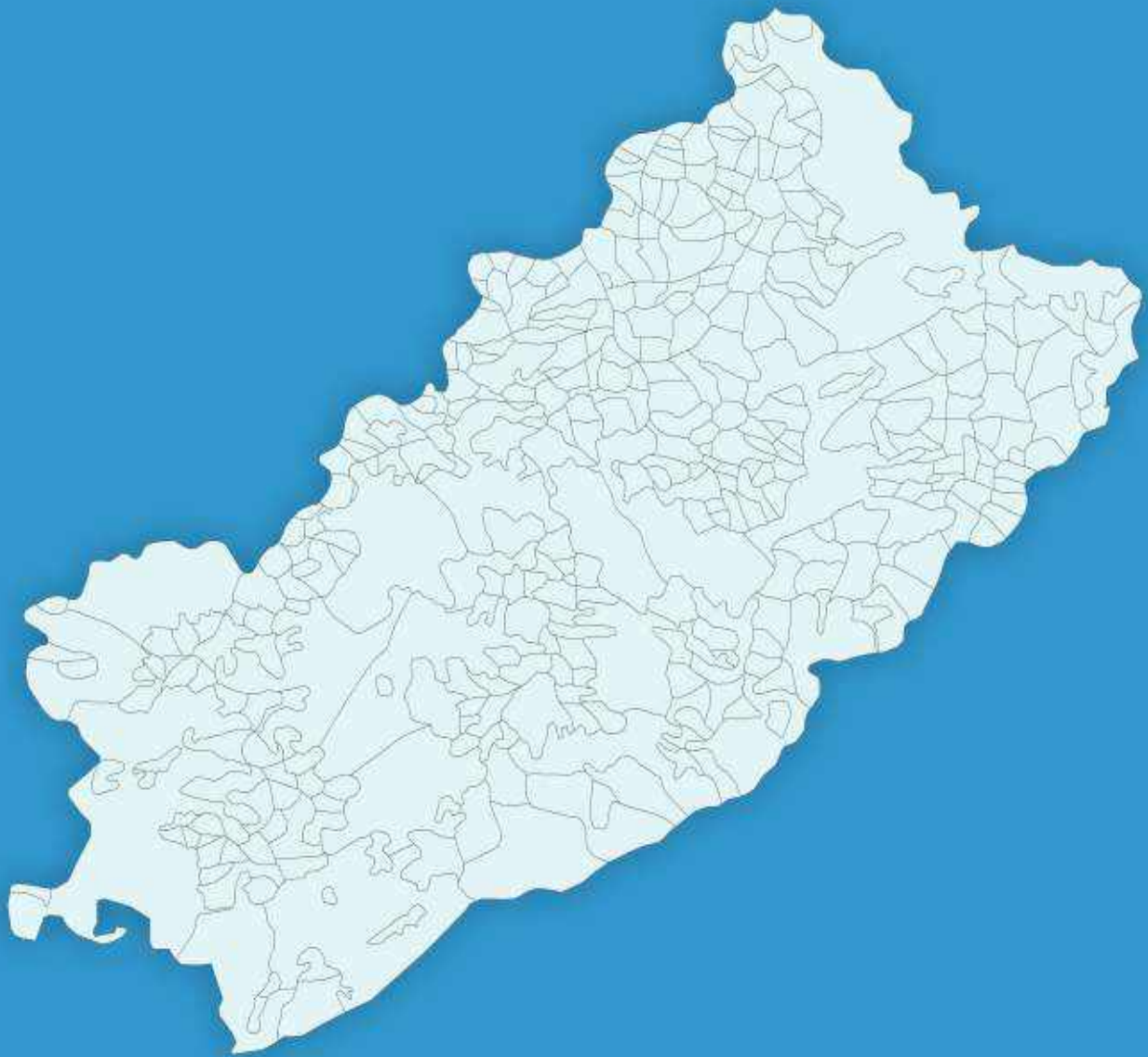
Jabera Assembly Constituency



Key Electoral Data of Jabera
Assembly Constituency (Vidhan Sabha)

Madhya Pradesh
Assembly Factbook™

Jabera Assembly Constituency



Jabera Vidhan Sabha

Editor & Director

Dr. R.K. Thukral

Research Editor

Dr. Shafeeq Rahman

Compiled, Researched and Published by Datanet India Pvt. Ltd.

D-100, 1st Floor,

Okhla Industrial Area, Phase-I,
New Delhi- 110020.

Ph.: 91-11- 43580781-84

Email : support@indiastatpublications.com

Website : www.indiastatelections.com

Online Book Store :

www.indiastatpublications.com

Report No. : AFB/MP-056-0125

ISBN : 978-93-87165-86-1

First Edition : January, 2018

Eighth Updated Edition : January, 2025

Price : Rs. 11500/-

US\$ 310

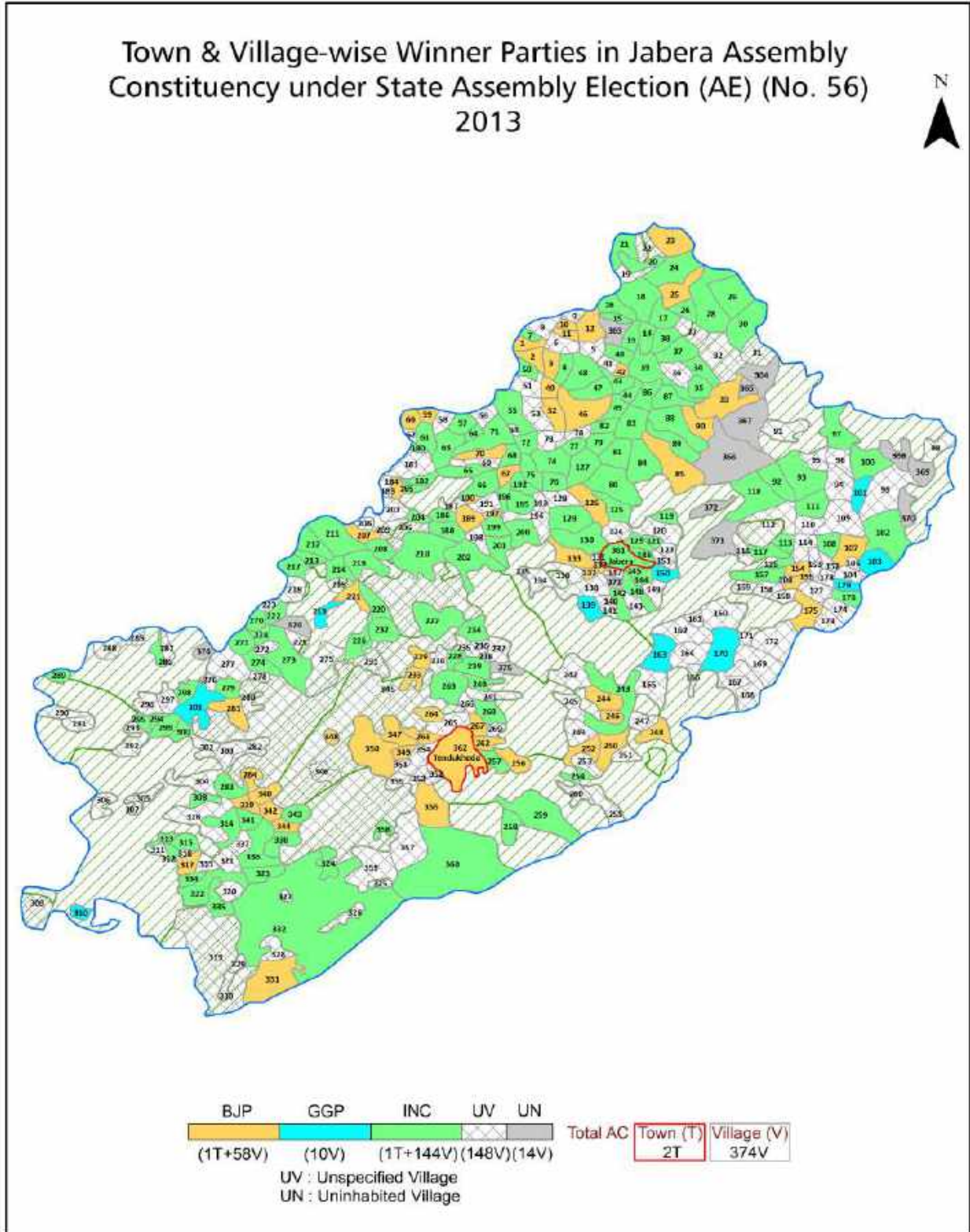
© Datanet India Pvt. Ltd.

All rights reserved. No part of this book may be reproduced, stored in a retrieval system or transmitted in any form or by any means, mechanical photocopying, photographing, scanning, recording or otherwise without the prior written permission of the publisher. Please refer to Disclaimer at page no. 236 for the use of this publication.

Printed in India

No.	Particulars	Page No.
	Introduction	
1	Assembly Constituency - (Vidhan Sabha) at a Glance Features of Assembly as per Delimitation Commission of India (2008)	1-2
	Location and Political Maps	
2	Location Map Boundaries of Assembly Constituency - (Vidhan Sabha in District Boundaries of Assembly Constituency under Parliamentary Constituency - (Lok Sabha) Town & Village-wise Winner Parties- 2024, 2023, 2019, 2018, 2014, 2013, 2009 and 2008	3-11
	Administrative Setup (2011)	
3	District Sub-district Towns Villages Inhabited Villages Uninhabited Villages Village Panchayat Intermediate Panchayat	12-30
	Demographics (2011)	
4	Population Households Rural/Urban Population Towns and Villages by Population Size Sex Ratio (Total & 0-6 Years) Religious Population Social Population Literacy Rate	31-32
	Electoral Features	
5	Important Dates of Last Elections Held Electors by Gender Service Electors Voters Voters Turnout Polling Stations & Average Number of Electors per Polling Station Electors by Age Group Present Elected Representatives	33-38
	Historical Summary Election Results	
6	Vote Share of Major Parties Winning Margin (Number & Percentage Polarity of Parties Summary Result of Assembly Segment of Parliamentary Elections 2024, 2019, 2014 and 2009 Summary Result of Assembly Elections 2023, 2018, 2013 and 2008	39-48
	Polling Station Level Election Results	
7	Name and Number of Polling Station 2024, 2023, 2019, 2018, 2014, 2013, 2009 and 2008 Polling Station-wise Electors, Voters & Voters Turnout 2024, 2023, 2019, 2018, 2014, 2013, 2009 and 2008 Polling Station wise Elections Results 2024, 2023, 2019, 2018, 2014, 2013, 2009 and 2008	49-214
	Share of Assembly Constituency	
8	Share of Assembly Constituency - (Vidhan Sabha) in State, District and Parliamentary Constituency - (Lok Sabha)	215
	Socio-Economic Amenities (2011)	
9	Access to Administrative Units Agricultural, Manufacturing and Industrial Commodities Demographic Indicators Education Health & Manpower Drinking Water Supply Sanitation Entertainment and Recreations Infrastructure Power Food Allocation Distribution and Marketing of Agriculture Commodities Infrastructure Transport and Road Infrastructure Communication Banking and Financial Services Land Use Irrigation Source	217-231
10	Abbreviation & Sources	233-234
11	Disclaimer	236

Location & Political Map



Administrative Setup

List of Village Panchayat & Intermediate Panchayat (Block) Name - 2011

Village Name	Village Panchayat Name	Intermediate Panchayat Name
Harrai Khari Deori	Chandna	Tendukheda
Harrai Panji	Bamhori Paghi	Tendukheda
Hathidol	Imlidol	Tendukheda
Hinoti	Hinaotithangapati	Jabera
Hinoti Ajam	Majhguvamangarh	Jabera
Hinoti Khetsingh	Hinaotikhatsing	Jabera
Hinoti Sarra	Hinoti	Tendukheda
Hinoti Singorgarh	Sailwada Mal	Tendukheda
Imaliya	Imaliya	Jabera
Imlidol	Imlidol	Tendukheda
Jaitgarh Mal	Poudi	Tendukheda
Jalhari	Jalehari	Jabera
Aloni	Klumar	Jabera
Amdar	Amdar	Jabera
Jalhari	Klumar	Jabera
Jamnera	Parswaha	Jabera
Amghat	Sagaodikhurd	Jabera
Amjhir	Chaurai	Jabera
Jamun Jhiri	Tindni	Tendukheda
Jamun Kheda	Jamunkheda	Tendukheda
Amtara	Guda	Jabera
Amwahi Mal	Bamhori Paghi	Tendukheda
Jamun Taradehi	Jamun	Tendukheda
Jamuniya	Bhajiya	Jabera
Anchalpura	Magdupura	Tendukheda
Arth Kheda	Katangi	Jabera
Jamuniya Sultan	Patimaharajsing	Jabera
Jaruwa	Imlidol	Tendukheda
Azitpur	Ajeetpur	Tendukheda

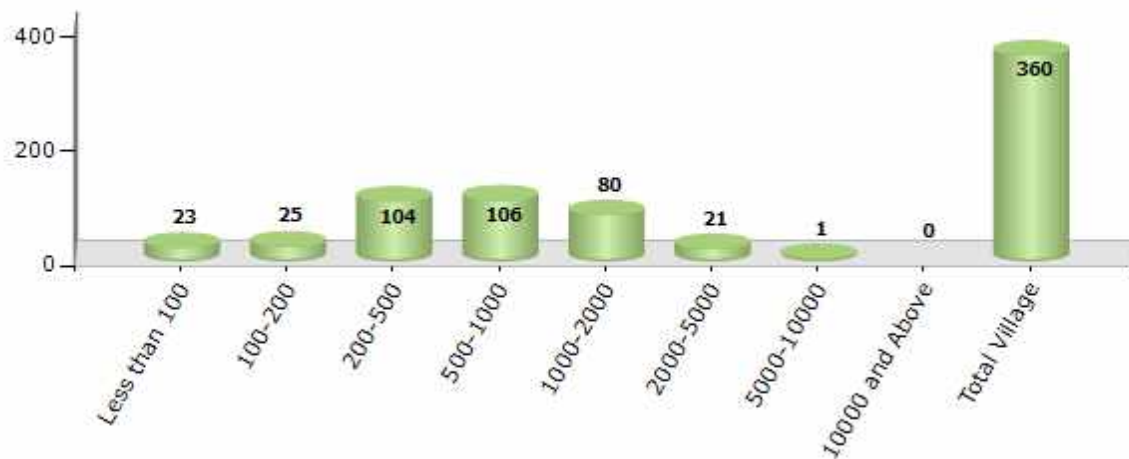
Contd....

Demographics

Number of Villages by Population Size - 2011

Less than 100	100-200	200-500	500-1000	1000-2000	2000-5000	5000-10000	10000 and Above	Total Village
23	25	104	106	80	21	1	0	360

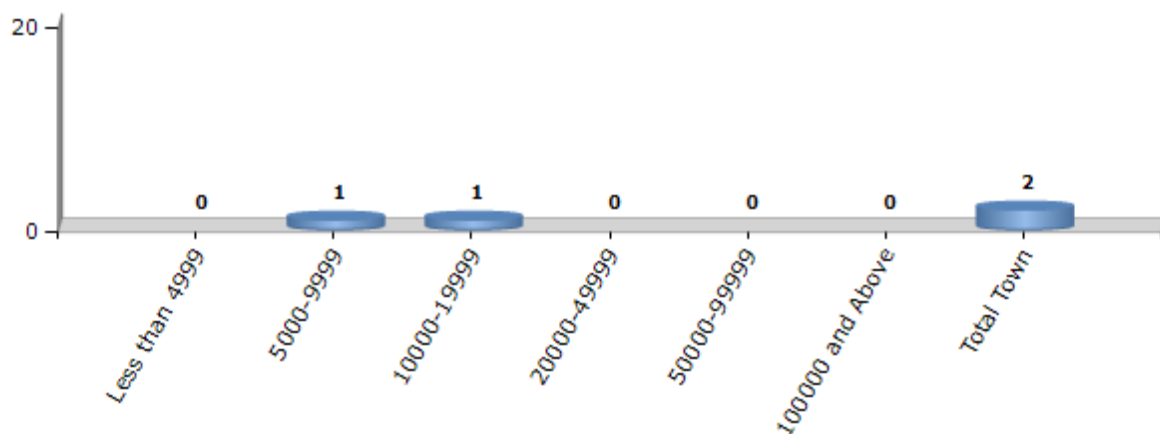
Number of Villages by Population Size - 2011



Number of Towns by Population Size - 2011

Less than 4999	5000-9999	10000-19999	20000-49999	50000-99999	100000 and Above	Total Town
0	1	1	0	0	0	2

Number of Towns by Population Size - 2011

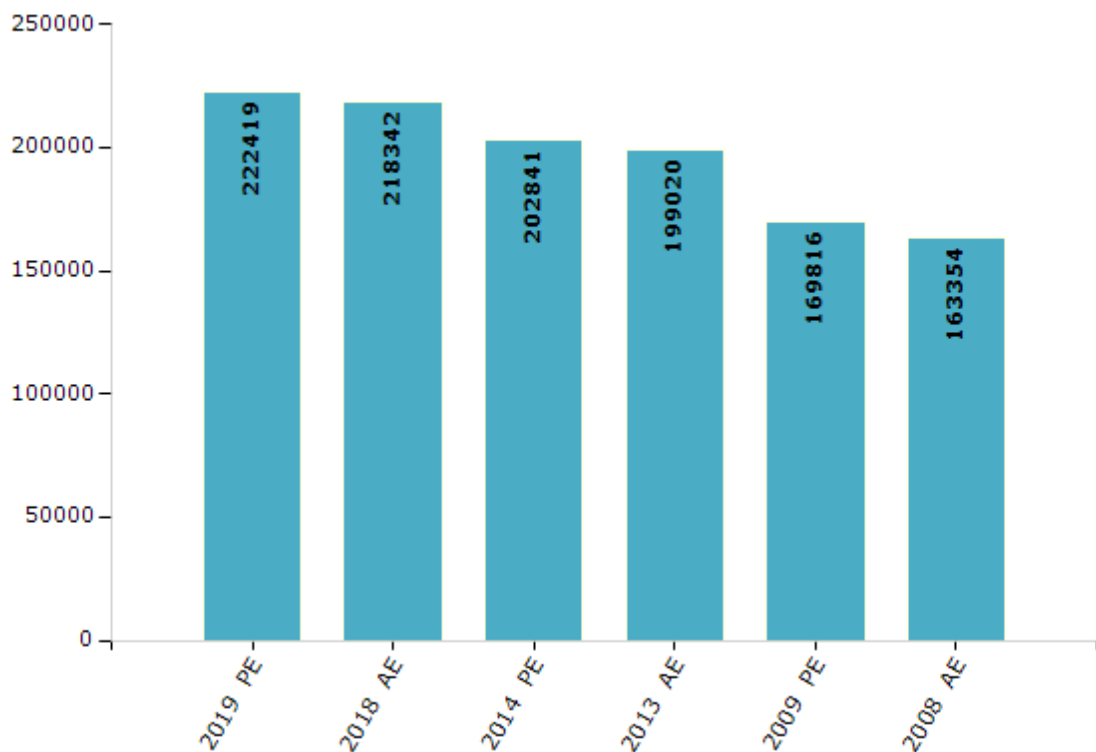


Electoral Features

Electors by Male & Female

Year	Male	Female	Others	Total	Year	Male	Female	Others	Total
2019 PE	115855	106564	0	222419	1993 AE	-	-	-	-
2018 AE	113593	104749	0	218342	1990 AE	-	-	-	-
2014 PE	106708	96133	0	202841	1985 AE	-	-	-	-
2013 AE	104687	94333	0	199020	1980 AE	-	-	-	-
2009 PE	89671	80145	-	169816	1977 AE	-	-	-	-
2008 AE	85358	77996	-	163354	1972 AE	-	-	-	-
2004 PE	-	-	-	-	1967 AE	-	-	-	-
2003 AE	-	-	-	-	1962 AE	-	-	-	-
1999 PE	-	-	-	-	1957 AE	-	-	-	-
1998 AE	-	-	-	-	1952 AE	-	-	-	-

Number of Electors

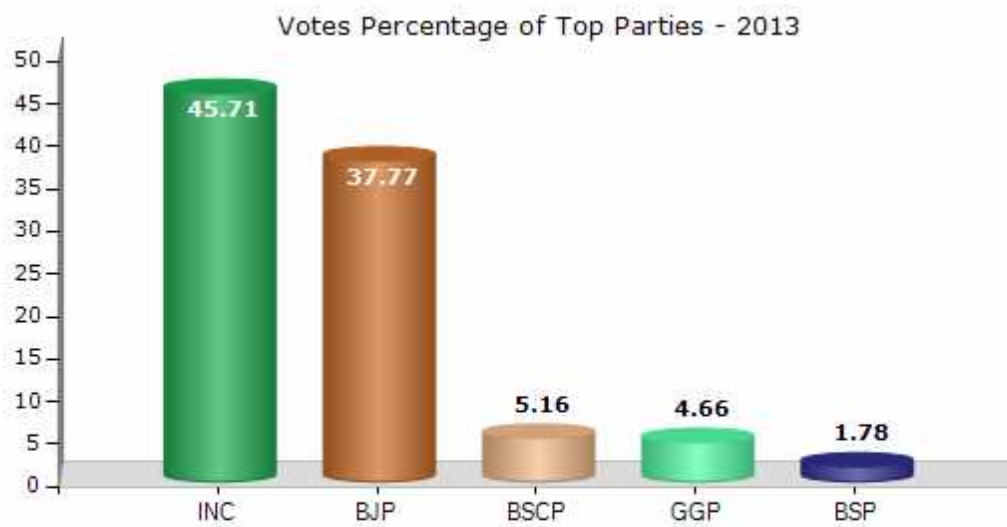


Note : AE : Assembly Election, PE : Assembly Segment of Parliamentary Election

Historical Summary Election Results

Summary Result of Assembly Election - 2013

Candidate Name	Party	Votes	Votes %
Pratap Singh	INC	68511	45.71
Dashrath Singh Lodhi Dassu Bhaiya	BJP	56615	37.77
Ashish Shukla Raju Bhaiya	BSCP	7729	5.16
Hariram Thakur	GGP	6991	4.66
Bhaiyalal Munsii Jee	BSP	2672	1.78
Veerendra Dubey Bindey Bhaiya	IND	2496	1.67
Dashrath Singh	IND	1004	0.67
Govind Singh	IND	848	0.57
	NOTA	3021	2.02



Polling Station Level Election Results

Number and Name of Polling Stations (PS) (2018)

Number of Polling Stations	Name of Polling Stations	Number of Polling Stations	Name of Polling Stations
1	Primary School Building Ghatera	22	Middle School Building Sagra
2	Primary School Building Ghatera Extra Room	23	Primary School Building East Part Road
3	Primary School Building Gadiyamangadh	24	Primary School Building West Part, Rod
4	Primary School Building Ghutguwa	25	Primary School Building Pipariya Naval Singh
5	Primary School Building Managuvamangadh	26	Primary School Building Achhaparavaha
6	Primary School Building Aharaduanamangadh	27	Primary School Building Parasvaha
7	Primary School Building Atirikt Kaksh Harduamangarh	28	Samudayak Bhavan Parasvaha
8	Primary School Building Banvar	29	Primary School Building Jamnera
9	Samudayik Building Banbar	30	Primary School Building Patanamanagadh
10	Middle School Building Banavar	31	Middle School Building Patna Mangarh
11	New Girls Midile School Bilding Banavar	32	Primary School Building Khamariya Mangarh
12	New Primary School Building Larguava	33	Primary School Building Muar
13	Primary School Building Pateenandalal	34	Primary School Building Ajharoli
14	Primary School Building Akhedar	35	Primary School Building Adhansara
15	Primary School Building Golapatti	36	Primary School Building Amousipura
16	Primary School Building Asalaiya	37	Primary School Building Ahinoti Thegapatti
17	Primary School Building Imaliya Mangadh	38	Primary School Building Akanepur
18	Middle School Building South Part Imaliya Mangadh	39	Primary School Building Ashakha
19	Primary School Building Arampura	40	Primary School Building Asalaiya Choubisa
20	Primary School Building Arichhai	41	Primary School Building Akulu Shakha
21	Primary School Building Asagara	42	Primary School Building Abhajiya

Contd....

Polling Station Level Election Results

Polling Station-wise Votes Secured by Overall Top Five Parties in Jabera Assembly in Assembly Election (AE) under Damoh Parliamentary Constituency in Madhya Pradesh (2018)

Number of Polling Station	Winner - Dharmendra Bhav Singh Lodhi (BJP)	Runner-up - Pratap Singh (INC)	3rd - Raghvendra Singh (Rishi Bhaiya) (IND)	4th - Aditya Ratnesh Solomon (IND)	5th - Arvind Pratap Singh Judev (GPP)	NOTA	Other	Total Votes Secured
36	148	164	115	3	14	14	216	674
37	172	222	113	3	3	8	74	595
38	189	129	128	3	6	9	93	557
39	261	267	22	1	6	7	34	598
40	120	138	80	1	4	1	24	368
41	211	311	112	3	10	9	175	831
42	243	197	45	1	8	9	28	531
43	192	216	42	4	8	3	109	574
44	365	265	69	2	8	3	60	772
45	208	159	16	4	2	3	57	449
46	360	194	67	2	1	9	48	681
47	176	90	24	1	3	0	170	464
48	223	101	41	32	4	2	35	438
49	124	254	45	5	2	3	17	450
50	171	135	32	6	2	5	92	443
51	349	42	43	0	1	6	26	467
52	310	277	41	2	5	9	93	737
53	141	74	164	3	4	6	26	418
54	103	44	475	7	0	20	59	708
55	40	82	405	4	0	13	85	629
56	58	77	161	3	0	7	71	377
57	34	103	296	11	2	8	55	509
58	141	222	232	2	3	11	90	701
59	176	34	157	1	0	4	29	401
60	284	228	318	5	2	7	63	907
61	35	233	80	11	5	7	77	448
62	122	97	457	5	1	15	72	769
63	12	20	225	1	0	1	20	279
64	40	52	526	4	4	9	78	713
65	52	251	346	8	12	17	174	860
66	5	34	250	1	1	4	29	324
67	25	34	164	47	1	4	74	349
68	86	131	317	21	5	7	125	692
69	78	81	99	3	3	3	46	313
70	118	138	278	8	9	10	93	654

Contd....

Polling Station Level Election Results

Winner, Runner-up and 3rd Party Position & Winning Margin According to Polling Stations in Jabera Assembly in Assembly Election (AE) under Damoh Parliamentary Constituency in Madhya Pradesh (2018)

Polling Station Number	Winner Party	Winner Votes (%)	Runner-up Party	Runner-up Votes (%)	Winning Margin Votes (%)	Third Party	Third Party Votes (%)	Other Votes (%)
67	IND (RSRB)	164 (46.99)	IND (ARS)	47 (13.47)	117 (33.52)	INC	34 (9.74)	104 (29.8)
68	IND (RSRB)	317 (45.81)	INC	131 (18.93)	186 (26.88)	BJP	86 (12.43)	158 (22.83)
69	IND (RSRB)	99 (31.63)	INC	81 (25.88)	18 (5.75)	BJP	78 (24.92)	55 (17.57)
70	IND (RSRB)	278 (42.51)	INC	138 (21.1)	140 (21.41)	BJP	118 (18.04)	120 (18.35)
71	INC	276 (29.65)	IND (RSRB)	201 (21.59)	75 (8.06)	BJP	172 (18.47)	282 (30.29)
72	INC	189 (49.48)	IND (RSRB)	88 (23.04)	101 (26.44)	BJP	52 (13.61)	53 (13.87)
73	INC	247 (47.59)	BSCP	76 (14.64)	171 (32.95)	GGP	50 (9.63)	146 (28.13)
74	BJP	284 (39.83)	INC	184 (25.81)	100 (14.02)	IND (RSRB)	130 (18.23)	115 (16.13)
75	INC	186 (40.7)	BJP	114 (24.95)	72 (15.75)	IND (RSRB)	57 (12.47)	100 (21.88)
76	INC	246 (41.98)	BJP	106 (18.09)	140 (23.89)	IND (RSRB)	80 (13.65)	154 (26.28)
77	INC	173 (41.19)	BSP	157 (37.38)	16 (3.81)	BJP	56 (13.33)	34 (8.1)
78	INC	215 (48.64)	BJP	131 (29.64)	84 (19)	IND (RSRB)	30 (6.79)	66 (14.93)
79	BJP	235 (50.76)	INC	118 (25.49)	117 (25.27)	IND (RSRB)	48 (10.37)	62 (13.39)
80	BJP	278 (48.1)	INC	132 (22.84)	146 (25.26)	IND (ARS)	45 (7.79)	123 (21.28)
81	BJP	279 (33.37)	INC	269 (32.18)	10 (1.19)	IND (RSRB)	115 (13.76)	173 (20.69)
82	BJP	270 (35.95)	INC	256 (34.09)	14 (1.86)	IND (RSRB)	74 (9.85)	151 (20.11)
83	INC	312 (39)	BJP	242 (30.25)	70 (8.75)	BSCP	90 (11.25)	156 (19.5)
84	INC	208 (32.05)	IND (RSRB)	162 (24.96)	46 (7.09)	BJP	131 (20.18)	148 (22.8)
85	INC	245 (31.29)	BJP	212 (27.08)	33 (4.21)	IND (RSRB)	137 (17.5)	189 (24.14)
86	BJP	195 (41.23)	INC	91 (19.24)	104 (21.99)	IND (RSRB)	85 (17.97)	102 (21.56)
87	INC	254 (50.2)	BJP	110 (21.74)	144 (28.46)	IND (RSRB)	45 (8.89)	97 (19.17)
88	INC	311 (43.99)	IND (RSRB)	182 (25.74)	129 (18.25)	BJP	101 (14.29)	113 (15.98)
89	BJP	182 (42.42)	INC	123 (28.67)	59 (13.75)	BSCP	36 (8.39)	88 (20.51)
90	INC	337 (66.47)	BJP	44 (8.68)	293 (57.79)	IND (RSRB)	32 (6.31)	94 (18.54)
91	BJP	220 (44.44)	INC	161 (32.53)	59 (11.91)	IND (RSRB)	56 (11.31)	58 (11.72)
92	BJP	224 (45.07)	INC	216 (43.46)	8 (1.61)	IND (RSRB)	24 (4.83)	33 (6.64)
93	BJP	89 (27.9)	INC	77 (24.14)	12 (3.76)	IND (ARS)	66 (20.69)	87 (27.27)
94	IND (RSRB)	181 (33.39)	INC	163 (30.07)	18 (3.32)	BJP	88 (16.24)	110 (20.3)
95	BSP	178 (31.96)	INC	141 (25.31)	37 (6.65)	IND (RSRB)	73 (13.11)	165 (29.62)
96	GGP	195 (42.03)	INC	143 (30.82)	52 (11.21)	IND (RSRB)	60 (12.93)	66 (14.22)
97	BJP	130 (31.18)	GGP	110 (26.38)	20 (4.8)	INC	67 (16.07)	110 (26.38)
98	INC	359 (39.06)	BJP	272 (29.6)	87 (9.46)	GGP	100 (10.88)	188 (20.46)
99	BJP	310 (41.17)	GGP	128 (17)	182 (24.17)	INC	119 (15.8)	196 (26.03)

Contd....

Socio-Economic Amenities - Rural

Access to Education Facilities

Particulars	Number of Village (% of Population)				
	Available	Not Available	If Not Available (Distance of Nearest Facility)		
			A	B	C
Govt. Primary School	307 (97)	53 (3)	31 (2)	15 (0)	0 (0)
Private Primary School	37 (21)	323 (79)	0 (0)	0 (0)	0 (0)
Govt. Middle School	137 (64)	223 (36)	133 (23)	61 (10)	8 (1)
Private Middle School	24 (17)	336 (83)	0 (0)	0 (0)	0 (0)
Govt. Secondary School	22 (17)	338 (83)	101 (25)	149 (40)	82 (14)
Private Secondary School	7 (8)	353 (92)	0 (0)	1 (0)	0 (0)
Govt. Senior Secondary School	9 (10)	351 (90)	53 (15)	130 (40)	146 (31)
Private Senior Secondary School	2 (3)	358 (97)	3 (1)	2 (0)	0 (0)
Govt. Arts and Science Degree College	0 (0)	360 (100)	14 (3)	27 (7)	281 (83)
Private Arts and Science Degree College	0 (0)	360 (100)	0 (0)	0 (0)	0 (0)
Govt. Engineering College	0 (0)	360 (100)	0 (0)	0 (0)	0 (0)
Private Engineering College	0 (0)	360 (100)	1 (0)	2 (1)	312 (91)
Govt. Medicine College	0 (0)	360 (100)	2 (1)	4 (1)	294 (87)
Private Medicine College	0 (0)	360 (100)	0 (0)	0 (0)	0 (0)
Govt. Management Institute	0 (0)	360 (100)	0 (0)	0 (0)	213 (66)
Private Management Institute	0 (0)	360 (100)	0 (0)	0 (0)	48 (13)
Govt. Polytechnic	0 (0)	360 (100)	1 (0)	3 (1)	356 (99)
Private Polytechnic	0 (0)	360 (100)	0 (0)	0 (0)	0 (0)
Govt. Vocational Training School/ITI	1 (2)	359 (98)	5 (1)	26 (9)	254 (70)
Private Vocational Training School/ITI	0 (0)	360 (100)	0 (0)	5 (1)	69 (17)
Govt. Non Formal Training Centre	0 (0)	360 (100)	1 (0)	9 (3)	214 (62)
Private Non Formal Training Centre	0 (0)	360 (100)	0 (0)	4 (2)	130 (33)
Govt. School For Disabled	0 (0)	360 (100)	0 (0)	0 (0)	231 (68)
Private School For Disabled	0 (0)	360 (100)	0 (0)	0 (0)	0 (0)
Government Others	0 (0)	360 (100)	0 (0)	0 (0)	20 (6)
Private Others	0 (0)	360 (100)	0 (0)	0 (0)	2 (1)

Note : Distance A : Less than 5 km; B : Between 5-10 km; C : 10+ km.; Source : Data Analysis is based on 2011 Census.

DISCLAIMER

The Terms of Use and Disclaimer of Datanet India Private Limited (hereinafter referred to as "Datanet") for use of this analysis report of **Jabera Assembly Constituency (Jabera Vidhan Sabha)** :-

1. **Assembly Factbook™** is a Registered Trade Mark owned by Datanet.
2. All the maps are sketched and graphical representation only and have not been drawn to the scale and also not to represent the actual geographical area or boundary of the unit.
3. The data for the aforesaid analysis is based on authentic sources and has been culled from the various publications of Census, CSO and NSSO for district and block level data, various central and state government departments, Central & State Elections Commissions and the concerned Returning Officers' releases, Electoral Rolls, Election results and allied publications, internal assessment, surveys, estimates and analysis. Therefore, certain adjustment of data at micro level may have been done to arrive closer to the macro data.
4. Data have been provided on an "As Is" and "As AVAILABLE" basis
5. The colours shown in the maps or diagram and charts of a particular party, alliance or AC are indicative and do not represent them.
6. This publication which includes maps, sheets, graphs and data would be the property under copyright of Datanet only. The user may use these for its internal study, analysis and research purposes. It's public display, re-selling or any commercial uses by the user are not allowed.
7. Datanet has taken due care and caution in compilation and processing of data and allied information, but does not guarantee the accuracy, adequacy or completeness of any information/analysis and will be not responsible for any errors or omissions or for the results obtained from the use of such information/analysis.
8. All the contents for the publication have been culled from various authentic sources and Datanet reasonably believes such sources to be reliable, but does not make any representations, express or implied as to the accuracy or fitness of use of such information. The information or contents of the information/analysis do not constitute advice and should not be relied upon in making (or refraining from making) any decision. Any reliance placed upon the information provided by Datanet is the sole responsibility and strictly at the user's risk.
9. In no event will Datanet be liable for any damages (including, without limitation, damages for loss of business projects, or loss of profits) arising in contract, tort or otherwise from the use of or inability to use any of its contents, or from any action taken (or refrained from being taken) as a result of using the analysis or any of its contents. Datanet its directors, owners, editors, officials, employees, distributor and agents or any associate will not be liable for any errors in the information contained or any consequences arising from the use of the contents of the provided information/analysis.
10. If any provision of these terms and conditions is held invalid or illegal or unenforceable for any reason by any court of competent jurisdiction, such provision shall be severed and the remainder of provisions of the terms and conditions shall continue in full force and effect as if the Term of Use had been executed with the invalid, illegal or unenforceable provision eliminated.
11. If there are any discrepancies in the information provided, please bring it to attention of Datanet for suitable rectification measures.

Buy Online This Complete Book At
Datanet India eBooks Store

www.indiastatpublications.com

or go directly at

[http://www.indiastatpublications.com/
Assembly_factbook/Madhya_Pradesh/Damoh/Jabera](http://www.indiastatpublications.com/Assembly_factbook/Madhya_Pradesh/Damoh/Jabera)



i **indiastat** **elections**

