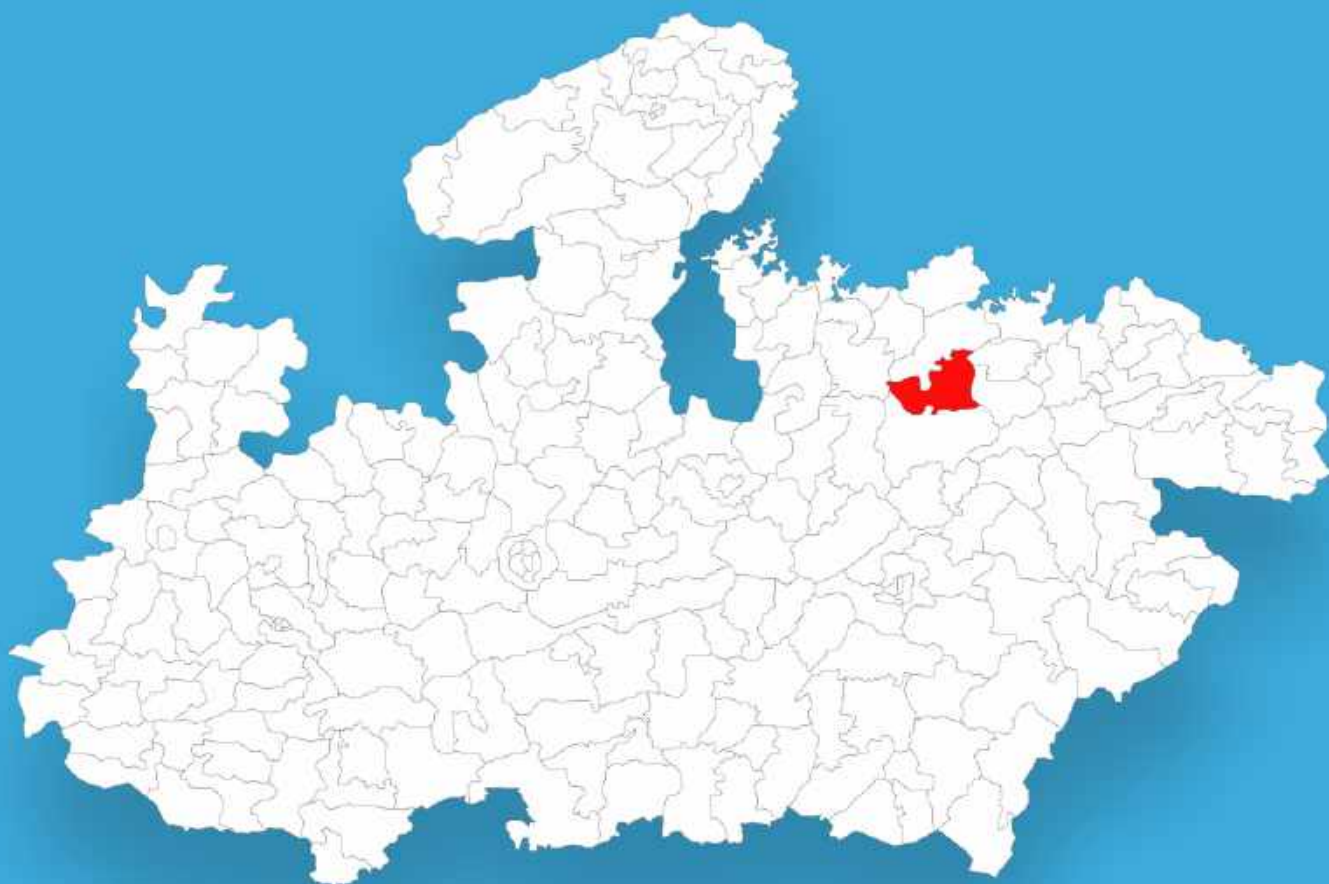




Madhya Pradesh

Assembly Factbook™

Gunnaor Assembly Constituency



Key Electoral Data of Gunnaor
Assembly Constituency (Vidhan Sabha)

Madhya Pradesh

Assembly Factbook™

Gunnaor Assembly Constituency



Gunnaor Vidhan Sabha

Editor & Director

Dr. R.K. Thukral

Research Editor

Dr. Shafeeq Rahman

**Compiled, Researched and Published by
Datanet India Pvt. Ltd.**

D-100, 1st Floor,
Okhla Industrial Area, Phase-I,
New Delhi- 110020.
Ph.: 91-11- 43580781-84
Email : support@indiastatpublications.com
Website : www.indiastatelections.com

Online Book Store :

www.indiastatpublications.com

Report No. : AFB/MP-059-0125

ISBN : 978-93-6219-120-5

First Edition : January, 2018

Eighth Updated Edition : January, 2025

Price : Rs.11500/-

US\$ 310

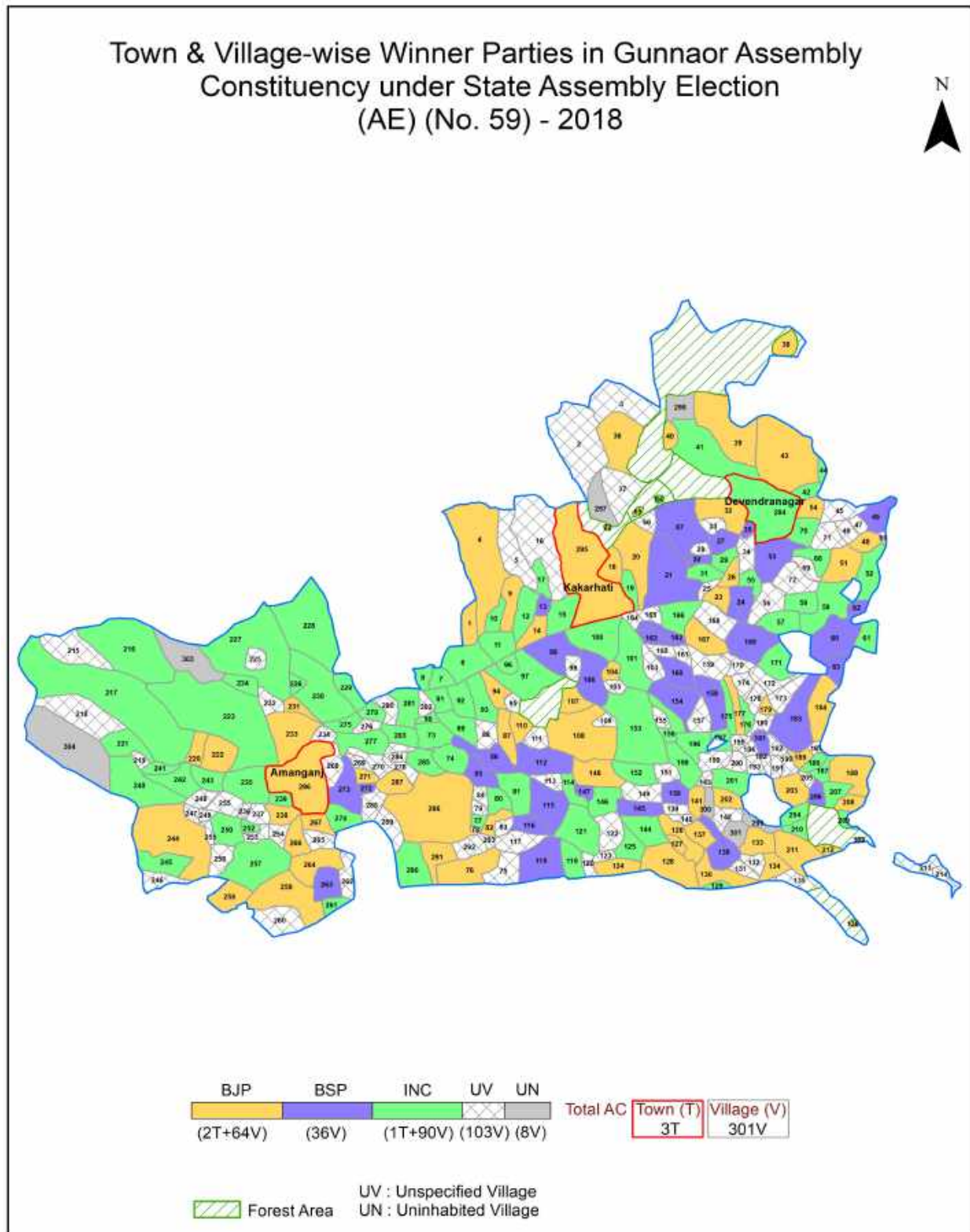
© **Datanet India Pvt. Ltd.**

All rights reserved. No part of this book may be reproduced, stored in a retrieval system or transmitted in any form or by any means, mechanical photocopying, photographing, scanning, recording or otherwise without the prior written permission of the publisher. Please refer to Disclaimer at page no. 220 for the use of this publication.

Printed in India

No.	Particulars	Page No.
	Introduction	
1	Assembly Constituency - (Vidhan Sabha) at a Glance Features of Assembly as per Delimitation Commission of India (2008)	1-2
	Location and Political Maps	
2	Location Map Boundaries of Assembly Constituency - (Vidhan Sabha) in District Boundaries of Assembly Constituency under Parliamentary Constituency - (Lok Sabha) Town & Village-wise Winner Parties- 2024, 2023, 2019, 2018, 2014, 2013, 2009 and 2008	3-11
	Administrative Setup (2011)	
3	District Sub-district Towns Villages Inhabited Villages Uninhabited Villages Village Panchayat Intermediate Panchayat	12-27
	Demographics (2011)	
4	Population Households Rural/Urban Population Towns and Villages by Population Size Sex Ratio (Total & 0-6 Years) Religious Population Social Population Literacy Rate	28-29
	Electoral Features	
5	Important Dates of Last Elections Held Electors by Gender Service Electors Voters Voters Turnout Polling Stations & Average Number of Electors per Polling Station Electors by Age Group Present Elected Representatives	30-35
	Historical Summary Election Results	
6	Vote Share of Major Parties Winning Margin (Number & Percentage) Polarity of Parties Summary Result of Assembly Segment of Parliamentary Elections 2024, 2019, 2014 and 2009 Summary Result of Assembly Elections 2023, 2018, 2013 and 2008	36-45
	Polling Station Level Election Results	
7	Name and Number of Polling Station 2024, 2023, 2019, 2018, 2014, 2013, 2009 and 2008 Polling Station-wise Electors, Voters & Voters Turnout 2024, 2023, 2019, 2018, 2014, 2013, 2009 and 2008 Polling Station wise Elections Results 2024, 2023, 2019, 2018, 2014, 2013, 2009 and 2008	46-199
	Share of Assembly Constituency	
8	Share of Assembly Constituency - (Vidhan Sabha) in State, District and Parliamentary Constituency - (Lok Sabha)	200
	Socio-Economic Amenities (2011)	
9	Access to Administrative Units Agricultural, Manufacturing and Industrial Commodities Demographic Indicators Education Health & Manpower Drinking Water Supply Sanitation Entertainment and Recreations Infrastructure Power Food Allocation Distribution and Marketing of Agriculture Commodities Infrastructure Transport and Road Infrastructure Communication Banking and Financial Services Land Use Irrigation Source	202-215
10	Abbreviation & Sources	217-218
11	Disclaimer	220

Location & Political Map



Administrative Setup

List of Village Panchayat & Intermediate Panchayat (Block) Name - 2011

Village Name	Village Panchayat Name	Intermediate Panchayat Name
Akona	Basour	Gunnor
Amari	Luhargaon	Gunnor
Amcui	Ranipura	Panna
Amsil	Bhilsayan	Panna
Antarbidiya	Hinouti	Gunnor
Antarbidiya(Majwaha)	Luhargaon	Gunnor
Asauni	Bandhoura	Gunnor
Bachharwara	Bhulgawan	Gunnor
Badagaon	Badagaon	Panna
Bahera	Janwar	Panna
Bakhtari	Bakhatri	Panna
Bakulaha	Imaliyan Bhure Khan	Gunnor
Balgaha	Balgaha	Gunnor
Bamhaur	Saleha	Gunnor
Bamhori	Bamhouri	Gunnor
Bamurahiya	Birwahi	Panna
Bamurha	Bamurha	Gunnor
Bamurha(Devendranagar)	Bhulgawan	Gunnor
Bamurhiya	Sithouli	Gunnor
Bandhaura	Bandhoura	Gunnor
Bandhur	Bandhoor	Gunnor
Bangla	Bhataharmegha	Panna
Barachh	Barachh	Panna
Baraunha	Bhulgawan	Gunnor
Barha Kalan	Barhakala	Gunnor
Barha Khurd	Kot	Gunnor
Barshobha	Barsobha	Gunnor
Basai	Mutwakala	Panna
Basaura	Basour	Gunnor

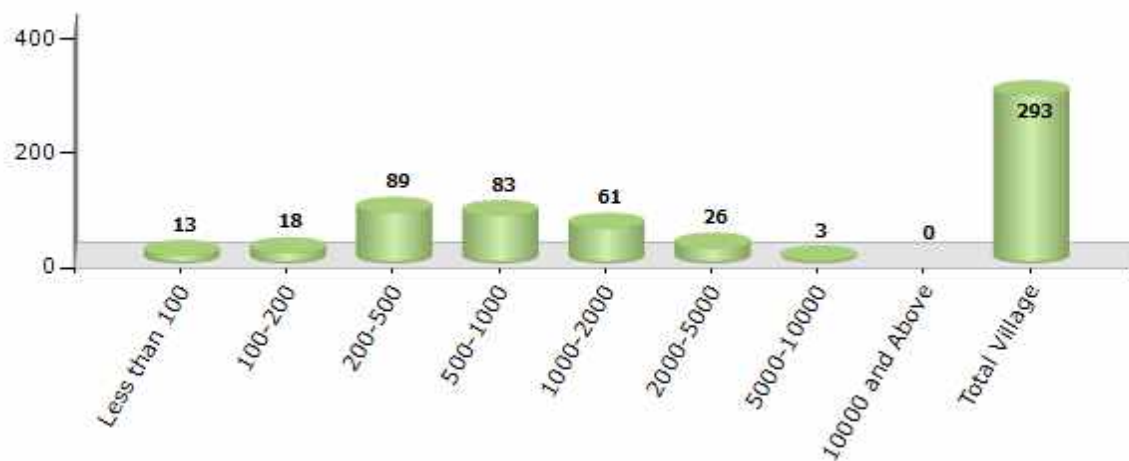
Contd....

Demographics

Number of Villages by Population Size - 2011

Less than 100	100-200	200-500	500-1000	1000-2000	2000-5000	5000-10000	10000 and Above	Total Village
13	18	89	83	61	26	3	0	293

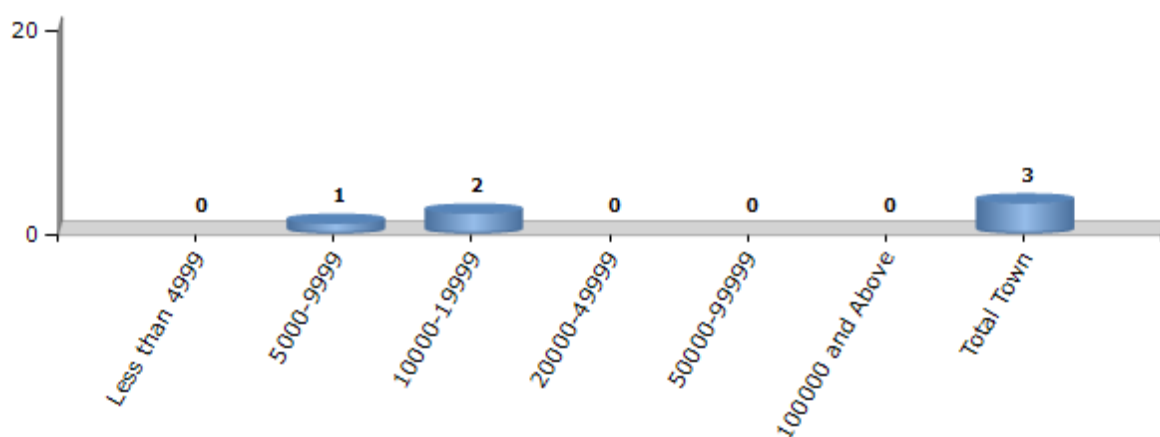
Number of Villages by Population Size - 2011



Number of Towns by Population Size - 2011

Less than 4999	5000-9999	10000-19999	20000-49999	50000-99999	100000 and Above	Total Town
0	1	2	0	0	0	3

Number of Towns by Population Size - 2011



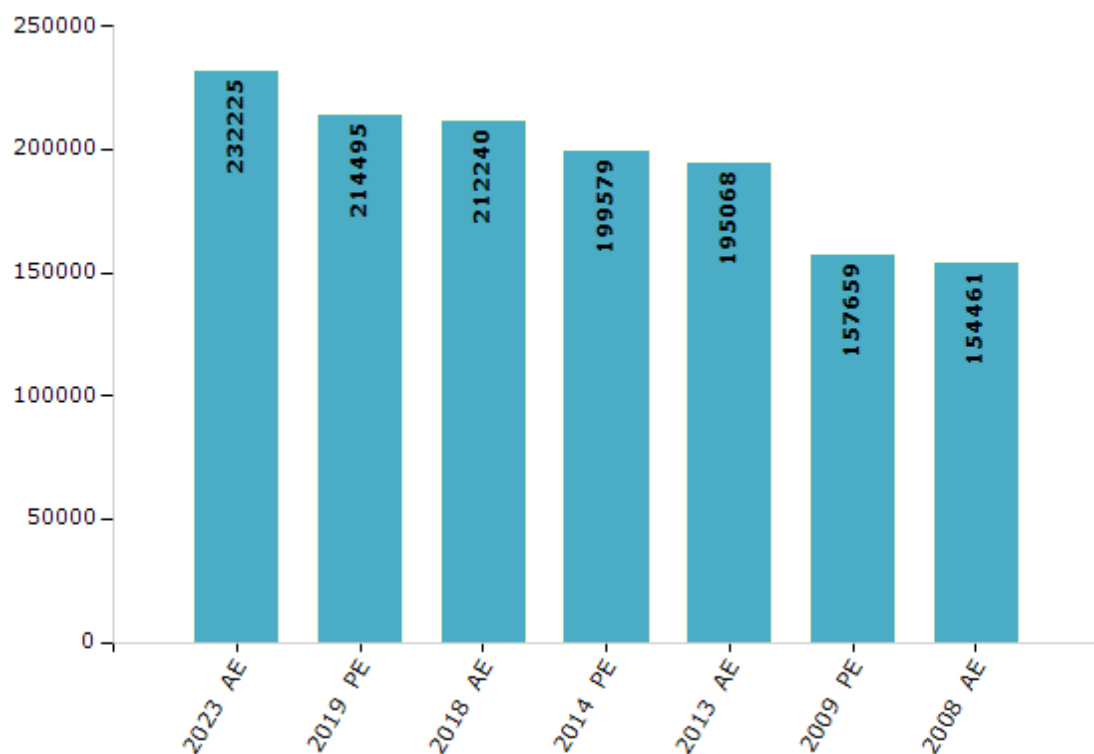
Electoral Features

Electors by Male & Female

Year	Male	Female	Others	Total
2023 AE	122886	109338	1	232225
2019 PE	113194	101296	5	214495
2018 AE	111857	100378	5	212240
2014 PE	106153	93425	1	199579
2013 AE	103867	91189	12	195068
2009 PE	83930	73729	-	157659
2008 AE	82060	72401	-	154461
2004 PE	-	-	-	-
2003 AE	-	-	-	-
1999 PE	-	-	-	-
1998 AE	-	-	-	-

Year	Male	Female	Others	Total
1993 AE	-	-	-	-
1990 AE	-	-	-	-
1985 AE	-	-	-	-
1980 AE	-	-	-	-
1977 AE	-	-	-	-
1972 AE	-	-	-	-
1967 AE	-	-	-	-
1962 AE	-	-	-	-
1957 AE	-	-	-	-
1952 AE	-	-	-	-

Number of Electors

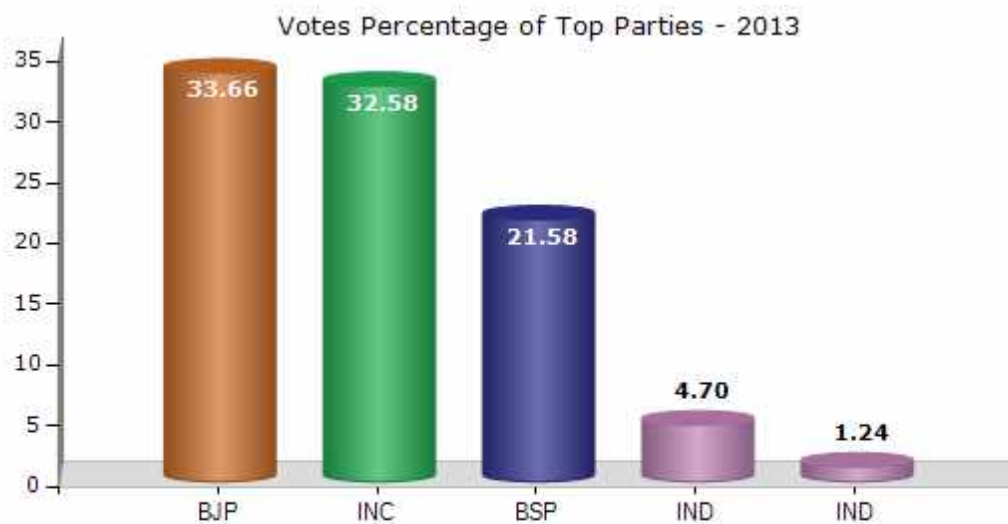


Note : AE : Assembly Election, PE : Assembly Segment of Parliamentary Election

Historical Summary Election Results

Summary Result of Assembly Election - 2013

Candidate Name	Party	Votes	Votes %
Mahendra Singh	BJP	41980	33.66
Shiv Dayal	INC	40643	32.58
Devideen	BSP	26915	21.58
Phoi Lal	IND	5866	4.7
Parshu	IND	1552	1.24
Somwati	NCP	1384	1.11
Girdhari Lal	IND	1000	0.8
Radha Bai	GGP	832	0.67
Kishori Lal	AD	723	0.58
Prahalad	LJP	465	0.37
Dhani Ram	SP	379	0.3
	NOTA	2991	2.4



Polling Station Level Election Results

Number and Name of Polling Stations (PS) (2018)

Number of Polling Stations	Name of Polling Stations	Number of Polling Stations	Name of Polling Stations
1	Middle Sch. Marha	22	Pri. Sch. Mihagavan Khurd
2	Panchayat Bhawan Rampur	23	Pri. School Piparwah
3	Gram Swaraj Hall Rampur	24	Nagar Parishad Office Amanganj
4	Pri. School Mahuadanda	25	Girls High School Amanganj (Northern Zone Room)
5	Pri. School Majhganva	26	Samudaik Hall Bard No. 3 Nagar Parishad Amanganj
6	Pri. School Balgaha	27	Girls High Sch.Amanganj (Southern Zone Room)
7	Middle Sch. Siry	28	Girls High Sch.Amanganj (Southern Zone Room)
8	Boys Middle School Siri	29	Boys Primary School Amanganj (Hall)
9	Gram Panchayat New Bhavan Jaitupur	30	Boys Pri. Sch. Amanganj
10	Middle Sch. Kunvarpura	31	Go. Girls Middle School Amanganj
11	Pri. School Mohar	32	Higher Sec. Sch. Amanganj (Northern Zone)
12	Pri. Sch. Jaswantpura	33	Gov. Mangal Hall Bard No.11 Amanganj
13	Pri. Girls School(Old Room) Jaswantpura	34	Higher Sec. Sch. Amanganj (Eastern Zone)
14	Girls Pri. School Jaswantpura	35	Gov.Higher Secondary School Amanganj Northern Hall
15	Middle Sch. Vikrampur	36	Pri. Sch. Adharkhuna Nagar Parishad Amanganj
16	Pra Sha. Dhuruaha	37	Pri Sch Bhavan Hinuati
17	High Sch. Dwari Northern Zone	38	Middle School Hinouti
18	Gov. Pri. Sch. Nayapur Dvari	39	Middle Sch. Jijgoan
19	High Sch. Dwari Southern Zone	40	Pri. School Gadokhar (Eastern Zone)
20	Pri. Sch. Hanumatpura	41	Primary Gov. Add. Room Kanchura
21	Middle Sch. Tighra	42	Middle Sch. Sindhora

Contd....

Polling Station Level Election Results

Polling Station-wise Votes Secured by Overall Top Five Parties in Gunnaor Assembly in Assembly Election (AE) under Khajuraho Parliamentary Constituency in Madhya Pradesh (2018)

Number of Polling Station	Winner - Shivdayal Bagri (INC)	Runner-up - Rajesh Kumar Verma (BJP)	3rd - Jeevanlal Siddharth (BSP)	4th - Khilawan Prasad Urf Khillu (SPAKP)	5th - ()	NOTA	Other	Total Votes Secured
36	192	221	130	9		12	0	564
37	258	185	12	12		13	0	480
38	204	115	164	12		10	0	505
39	158	96	129	9		12	0	404
40	138	129	99	8		5	0	379
41	227	162	109	18		20	0	536
42	170	167	41	19		15	0	412
43	280	245	21	18		13	0	577
44	199	264	140	17		26	0	646
45	265	269	156	28		19	0	737
46	203	165	27	10		5	0	410
47	68	136	53	12		8	0	277
48	195	163	69	19		18	0	464
49	328	388	48	20		21	0	805
50	181	106	177	12		15	0	491
51	215	140	10	10		10	0	385
52	371	222	61	20		9	0	683
53	255	228	26	15		15	0	539
54	338	196	109	16		15	0	674
55	201	126	9	9		7	0	352
56	143	241	61	5		15	0	465
57	149	261	153	28		6	0	597
58	116	175	90	8		11	0	400
59	156	142	177	9		11	0	495
60	174	250	143	14		21	0	602
61	312	208	135	9		15	0	679
62	99	147	76	7		7	0	336
63	142	186	4	2		3	0	337
64	153	74	160	6		3	0	396
65	180	121	71	5		7	0	384
66	222	190	282	21		28	0	743
67	279	158	59	22		10	0	528
68	484	145	115	31		24	0	799
69	307	151	134	21		17	0	630
70	372	152	100	15		20	0	659

Contd....

Polling Station Level Election Results

Winner, Runner-up and 3rd Party Position & Winning Margin According to Polling Stations in Gunnaor Assembly in Assembly Election (AE) under Khajuraho Parliamentary Constituency in Madhya Pradesh (2018)

Polling Station Number	Winner Party	Winner Votes (%)	Runner-up Party	Runner-up Votes (%)	Winning Margin Votes (%)	Third Party	Third Party Votes (%)	Other Votes (%)
67	INC	279 (52.84)	BJP	158 (29.92)	121 (22.92)	BSP	59 (11.17)	32 (6.06)
68	INC	484 (60.58)	BJP	145 (18.15)	339 (42.43)	BSP	115 (14.39)	55 (6.88)
69	INC	307 (48.73)	BJP	151 (23.97)	156 (24.76)	BSP	134 (21.27)	38 (6.03)
70	INC	372 (56.45)	BJP	152 (23.07)	220 (33.38)	BSP	100 (15.17)	35 (5.31)
71	INC	219 (42.94)	BSP	162 (31.76)	57 (11.18)	BJP	114 (22.35)	15 (2.94)
72	INC	228 (57.43)	BJP	91 (22.92)	137 (34.51)	BSP	53 (13.35)	25 (6.3)
73	INC	232 (49.26)	BJP	121 (25.69)	111 (23.57)	BSP	98 (20.81)	20 (4.25)
74	INC	368 (69.3)	BSP	89 (16.76)	279 (52.54)	BJP	57 (10.73)	17 (3.2)
75	INC	218 (39)	BJP	184 (32.92)	34 (6.08)	BSP	134 (23.97)	23 (4.11)
76	INC	234 (44.32)	BSP	146 (27.65)	88 (16.67)	BJP	125 (23.67)	23 (4.36)
77	INC	172 (46.74)	BSP	102 (27.72)	70 (19.02)	BJP	85 (23.1)	9 (2.45)
78	BJP	332 (49.04)	INC	296 (43.72)	36 (5.32)	BSP	34 (5.02)	15 (2.22)
79	BJP	296 (41.69)	BSP	188 (26.48)	108 (15.21)	INC	187 (26.34)	39 (5.49)
80	BJP	423 (51.15)	INC	251 (30.35)	172 (20.8)	BSP	116 (14.03)	37 (4.47)
81	BJP	281 (60.82)	INC	133 (28.79)	148 (32.03)	BSP	32 (6.93)	16 (3.46)
82	BSP	210 (47.09)	BJP	131 (29.37)	79 (17.72)	INC	72 (16.14)	33 (7.4)
83	BJP	272 (58.87)	INC	156 (33.77)	116 (25.1)	BSP	18 (3.9)	16 (3.46)
84	BJP	332 (42.56)	INC	287 (36.79)	45 (5.77)	BSP	108 (13.85)	53 (6.79)
85	INC	255 (42.79)	BJP	240 (40.27)	15 (2.52)	BSP	87 (14.6)	14 (2.35)
86	BSP	180 (44.23)	INC	123 (30.22)	57 (14.01)	BJP	96 (23.59)	8 (1.97)
87	INC	167 (41.65)	BJP	136 (33.92)	31 (7.73)	BSP	85 (21.2)	13 (3.24)
88	BJP	191 (38.9)	INC	176 (35.85)	15 (3.05)	BSP	97 (19.76)	27 (5.5)
89	INC	472 (52.8)	BSP	256 (28.64)	216 (24.16)	BJP	133 (14.88)	33 (3.69)
90	BSP	254 (43.49)	BJP	155 (26.54)	99 (16.95)	INC	144 (24.66)	31 (5.31)
91	INC	306 (53.59)	BJP	131 (22.94)	175 (30.65)	BSP	115 (20.14)	19 (3.33)
92	BJP	199 (48.77)	BSP	103 (25.25)	96 (23.52)	INC	92 (22.55)	14 (3.43)
93	INC	160 (40.71)	BSP	110 (27.99)	50 (12.72)	BJP	105 (26.72)	18 (4.58)
94	INC	224 (37.33)	BSP	216 (36)	8 (1.33)	BJP	134 (22.33)	26 (4.33)
95	BSP	201 (39.72)	INC	148 (29.25)	53 (10.47)	BJP	141 (27.87)	16 (3.16)
96	INC	236 (51.87)	BSP	101 (22.2)	135 (29.67)	BJP	100 (21.98)	18 (3.96)
97	BSP	289 (71.89)	INC	76 (18.91)	213 (52.98)	BJP	28 (6.97)	9 (2.24)
98	INC	203 (42.2)	BJP	179 (37.21)	24 (4.99)	BSP	75 (15.59)	24 (4.99)
99	BJP	223 (39.82)	INC	194 (34.64)	29 (5.18)	BSP	111 (19.82)	32 (5.71)

Contd....

Socio-Economic Amenities - Rural

Access to Education Facilities

Particulars	Number of Village (% of Population)				
	Available	Not Available	If Not Available (Distance of Nearest Facility)		
			A	B	C
Govt. Primary School	285 (100)	8 (0)	8 (0)	0 (0)	0 (0)
Private Primary School	40 (33)	253 (67)	0 (0)	0 (0)	0 (0)
Govt. Middle School	162 (80)	131 (20)	92 (16)	23 (2)	12 (2)
Private Middle School	11 (12)	282 (88)	0 (0)	0 (0)	0 (0)
Govt. Secondary School	19 (22)	274 (78)	57 (17)	157 (43)	47 (12)
Private Secondary School	5 (6)	288 (94)	3 (1)	1 (0)	1 (0)
Govt. Senior Secondary School	15 (16)	278 (84)	42 (15)	145 (45)	80 (20)
Private Senior Secondary School	3 (5)	290 (95)	1 (1)	2 (0)	1 (0)
Govt. Arts and Science Degree College	0 (0)	293 (100)	5 (2)	29 (12)	250 (81)
Private Arts and Science Degree College	0 (0)	293 (100)	0 (0)	0 (0)	0 (0)
Govt. Engineering College	0 (0)	293 (100)	0 (0)	1 (1)	231 (80)
Private Engineering College	0 (0)	293 (100)	0 (0)	0 (0)	38 (11)
Govt. Medicine College	0 (0)	293 (100)	0 (0)	0 (0)	244 (83)
Private Medicine College	0 (0)	293 (100)	0 (0)	0 (0)	0 (0)
Govt. Management Institute	0 (0)	293 (100)	0 (0)	6 (2)	162 (51)
Private Management Institute	0 (0)	293 (100)	0 (0)	1 (1)	91 (32)
Govt. Polytechnic	0 (0)	293 (100)	0 (0)	2 (1)	290 (97)
Private Polytechnic	0 (0)	293 (100)	0 (0)	0 (0)	0 (0)
Govt. Vocational Training School/ITI	1 (2)	292 (98)	2 (0)	33 (12)	256 (85)
Private Vocational Training School/ITI	0 (0)	293 (100)	0 (0)	0 (0)	1 (0)
Govt. Non Formal Training Centre	2 (2)	291 (98)	0 (0)	8 (1)	161 (52)
Private Non Formal Training Centre	0 (0)	293 (100)	2 (2)	0 (0)	119 (41)
Govt. School For Disabled	1 (1)	292 (99)	2 (2)	7 (3)	229 (77)
Private School For Disabled	0 (0)	293 (100)	0 (0)	0 (0)	0 (0)
Government Others	0 (0)	293 (100)	0 (0)	0 (0)	2 (0)
Private Others	0 (0)	293 (100)	0 (0)	0 (0)	4 (1)

Note : Distance A : Less than 5 km; B : Between 5-10 km; C : 10+ km.; Source : Data Analysis is based on 2011 Census.

DISCLAIMER

The Terms of Use and Disclaimer of Datanet India Private Limited (hereinafter referred to as "Datanet") for use of this analysis report of **Gunnaor Assembly Constituency (Gunnaor Vidhan Sabha)** :-

1. **Assembly Factbook™** is a Registered Trade Mark owned by Datanet.
2. All the maps are sketched and graphical representation only and have not been drawn to the scale and also not to represent the actual geographical area or boundary of the unit.
3. The data for the aforesaid analysis is based on authentic sources and has been culled from the various publications of Census, CSO and NSSO for district and block level data, various central and state government departments, Central & State Elections Commissions and the concerned Returning Officers' releases, Electoral Rolls, Election results and allied publications, internal assessment, surveys, estimates and analysis. Therefore, certain adjustment of data at micro level may have been done to arrive closer to the macro data.
4. Data have been provided on an "As Is" and "As AVAILABLE" basis
5. The colours shown in the maps or diagram and charts of a particular party, alliance or AC are indicative and do not represent them.
6. This publication which includes maps, sheets, graphs and data would be the property under copyright of Datanet only. The user may use these for its internal study, analysis and research purposes. It's public display, re-selling or any commercial uses by the user are not allowed.
7. Datanet has taken due care and caution in compilation and processing of data and allied information, but does not guarantee the accuracy, adequacy or completeness of any information/analysis and will be not responsible for any errors or omissions or for the results obtained from the use of such information/analysis.
8. All the contents for the publication have been culled from various authentic sources and Datanet reasonably believes such sources to be reliable, but does not make any representations, express or implied as to the accuracy or fitness of use of such information. The information or contents of the information/analysis do not constitute advice and should not be relied upon in making (or refraining from making) any decision. Any reliance placed upon the information provided by Datanet is the sole responsibility and strictly at the user's risk.
9. In no event will Datanet be liable for any damages (including, without limitation, damages for loss of business projects, or loss of profits) arising in contract, tort or otherwise from the use of or inability to use any of its contents, or from any action taken (or refrained from being taken) as a result of using the analysis or any of its contents. Datanet its directors, owners, editors, officials, employees, distributor and agents or any associate will not be liable for any errors in the information contained or any consequences arising from the use of the contents of the provided information/analysis.
10. If any provision of these terms and conditions is held invalid or illegal or unenforceable for any reason by any court of competent jurisdiction, such provision shall be severed and the remainder of provisions of the terms and conditions shall continue in full force and effect as if the Term of Use had been executed with the invalid, illegal or unenforceable provision eliminated.
11. If there are any discrepancies in the information provided, please bring it to attention of Datanet for suitable rectification measures.

Buy Online This Complete Book At
Datanet India eBooks Store

www.indiastatpublications.com

or go directly at

[http://www.indiastatpublications.com/
Assembly_factbook/Madhya_Pradesh/Khajuraho/ Gunnaor](http://www.indiastatpublications.com/Assembly_factbook/Madhya_Pradesh/Khajuraho/Gunnaor)

 **indiastat**elections

ISBN : 978-93-6219-120-5



9 789362 191205