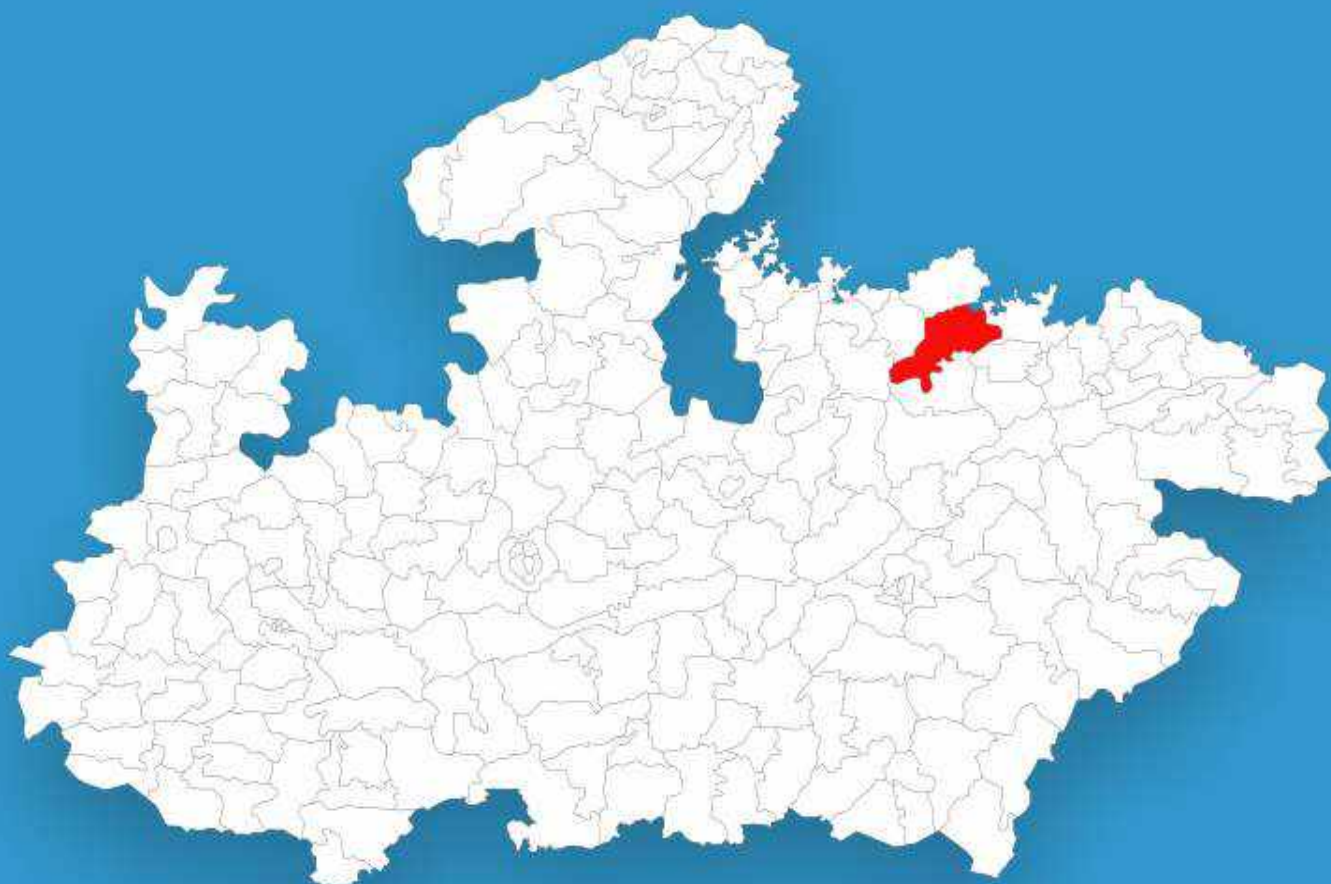




Madhya Pradesh

# Assembly Factbook™

Panna Assembly Constituency



Key Electoral Data of Panna  
Assembly Constituency (Vidhan Sabha)

Madhya Pradesh  
**Assembly Factbook™**

Panna Assembly Constituency



Panna Vidhan Sabha

## **Editor & Director**

Dr. R.K. Thukral

## **Research Editor**

Dr. Shafeeq Rahman

## **Compiled, Researched and Published by Datanet India Pvt. Ltd.**

D-100, 1st Floor,

Okhla Industrial Area, Phase-I,  
New Delhi- 110020.

Ph.: 91-11- 43580781-84

Email : support@indiastatpublications.com

Website : www.indiastatelections.com

## **Online Book Store :**

www.indiastatpublications.com

**Report No. :** AFB/MP-060-0125

**ISBN :** 978-93-87189-42-3

**First Edition :** January, 2018

**Eighth Updated Edition :** January, 2025

**Price :** Rs. 11500/-

US\$ 310

**© Datanet India Pvt. Ltd.**

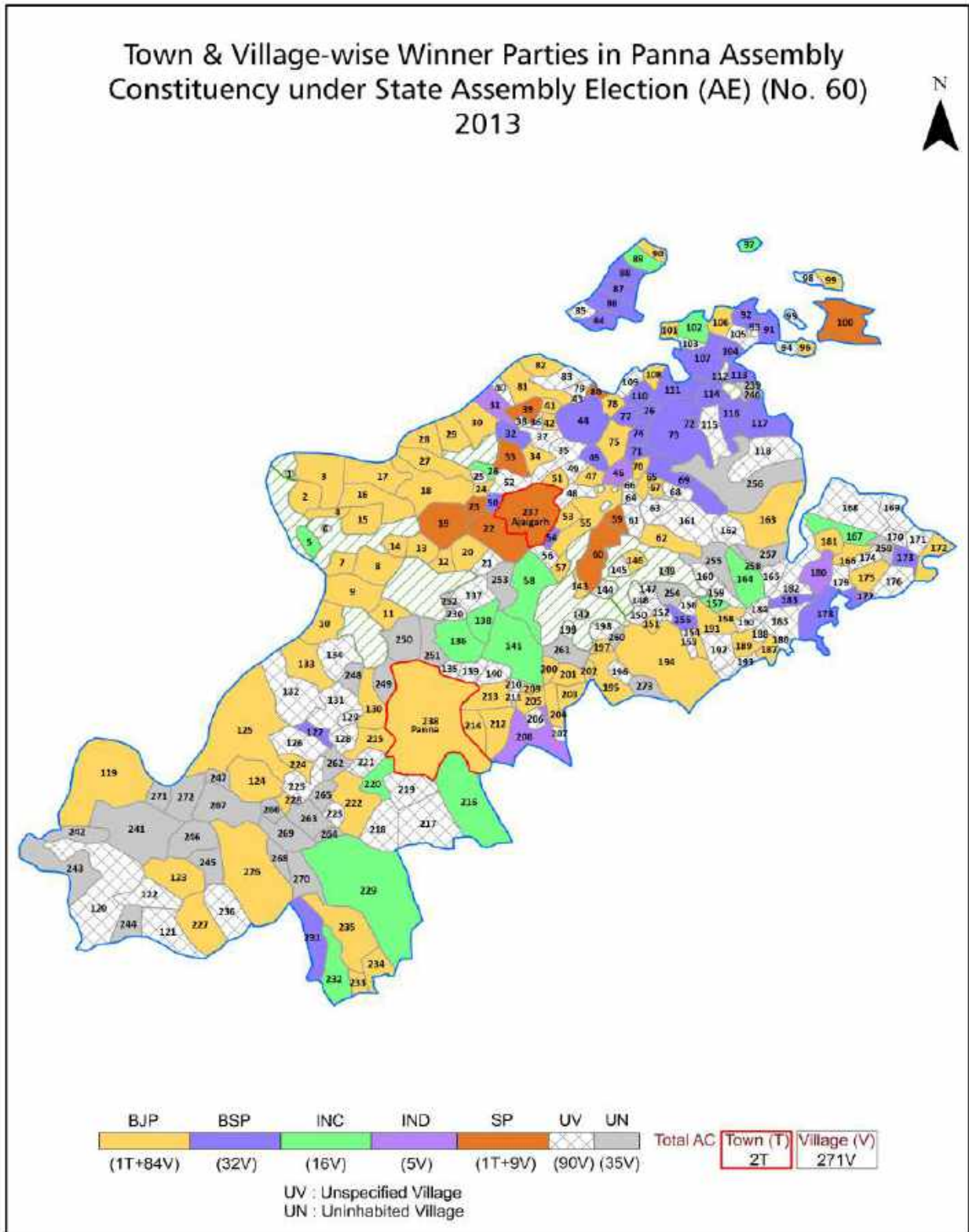
All rights reserved. No part of this book may be reproduced, stored in a retrieval system or transmitted in any form or by any means, mechanical photocopying, photographing, scanning, recording or otherwise without the prior written permission of the publisher. Please refer to Disclaimer at page no. 197 for the use of this publication.

Printed in India

# Contents

No.	Particulars	Page No.
	<b>Introduction</b>	
1	Assembly Constituency - (Vidhan Sabha) at a Glance   Features of Assembly as per Delimitation Commission of India (2008)	1-2
	<b>Location and Political Maps</b>	
2	Location Map   Boundaries of Assembly Constituency - (Vidhan Sabha in District   Boundaries of Assembly Constituency under Parliamentary Constituency - (Lok Sabha)   Town & Village-wise Winner Parties- 2024, 2023, 2019, 2014, 2013, 2009 and 2008	3-11
	<b>Administrative Setup (2011)</b>	
3	District   Sub-district   Towns   Villages   Inhabited Villages   Uninhabited Villages   Village Panchayat   Intermediate Panchayat	12-24
	<b>Demographics (2011)</b>	
4	Population   Households   Rural/Urban Population   Towns and Villages by Population Size   Sex Ratio (Total & 0-6 Years)   Religious Population   Social Population   Literacy Rate	25-26
	<b>Electoral Features</b>	
5	Important Dates of Last Elections Held   Electors by Gender   Service Electors   Voters   Voters Turnout   Polling Stations & Average Number of Electors per Polling Station   Electors by Age Group   Present Elected Representatives	27-32
	<b>Historical Summary Election Results</b>	
6	Vote Share of Major Parties   Winning Margin (Number & Percentage   Polarity of Parties   Summary Result of Assembly Segment of Parliamentary Elections 2024, 2019, 2014, 2009, 2004 and 1999   Summary Result of Assembly Elections 2023, 2018, 2013, 2008, 2003, 1998, 1993, 1990, 1985, 1980, 1977, 1972, 1967, 1962 and 1957	33-55
	<b>Polling Station Level Election Results</b>	
7	Name and Number of Polling Station 2024, 2023, 2019, 2014, 2013, 2009 and 2008   Polling Station-wise Electors, Voters & Voters Turnout 2024, 2023, 2019, 2014, 2013, 2009 and 2008   Polling Station wise Elections Results 2024, 2023, 2019, 2014, 2013, 2009 and 2008	56-175
	<b>Share of Assembly Constituency</b>	
8	Share of Assembly Constituency - (Vidhan Sabha) in State, District and Parliamentary Constituency - (Lok Sabha)	176
	<b>Socio-Economic Amenities (2011)</b>	
9	Access to Administrative Units   Agricultural, Manufacturing and Industrial Commodities   Demographic Indicators   Education   Health & Manpower   Drinking Water Supply   Sanitation   Entertainment and Recreations Infrastructure   Power   Food Allocation Distribution and Marketing of Agriculture Commodities Infrastructure   Transport and Road Infrastructure   Communication   Banking and Financial Services   Land Use   Irrigation Source	178-192
10	<b>Abbreviation &amp; Sources</b>	194-195
11	<b>Disclaimer</b>	197

Location & Political Map



## Administrative Setup

### List of Village Panchayat & Intermediate Panchayat (Block) Name - 2011

Village Name	Village Panchayat Name	Intermediate Panchayat Name
Ahirguwan	Ahirguwan	Panna
Akla	Siraswaha	Panna
Akola	Jardhoba	Panna
Amarchi	Amarchhi	Ajaigarh
Amhai	Laxmipur	Panna
Amjhiriya	Manaki	Panna
Aramganj	Vishramganj	Ajaigarh
Babupur Alias Rajapur	Jamunhai	Panna
Badera	Dharampur	Panna
Badgadi Khurd	Badgadi Khurd	Panna
Bador	Badour	Panna
Bagonha	Bagounha	Panna
Bahadurpur	Silouna	Ajaigarh
Bahirwara	Bahirwara	Ajaigarh
Bakchur	Manour	Panna
Bandhi Kalan	Bandhikala	Panna
Bandhi Khurd	Manour	Panna
Bangla	Siraswaha	Panna
Banhari Kalan	Banharikala	Ajaigarh
Banhari Khurd	Hanmatpur	Ajaigarh
Bara Kagreka	Barakagareka	Ajaigarh
Baradandeka	Sinhai	Ajaigarh
Barauli	Barouli	Ajaigarh
Barbaspura	Barbaspura	Panna
Barkola Khurd	Barkola	Ajaigarh
Baryarpur	Baryarpur Kurmiyan	Ajaigarh
Baryarpur Bhumiyan	Bariyarpur Bhumiyan	Ajaigarh
Baveru	Hardi	Ajaigarh
Bdirugh	Bahadurganj	Ajaigarh

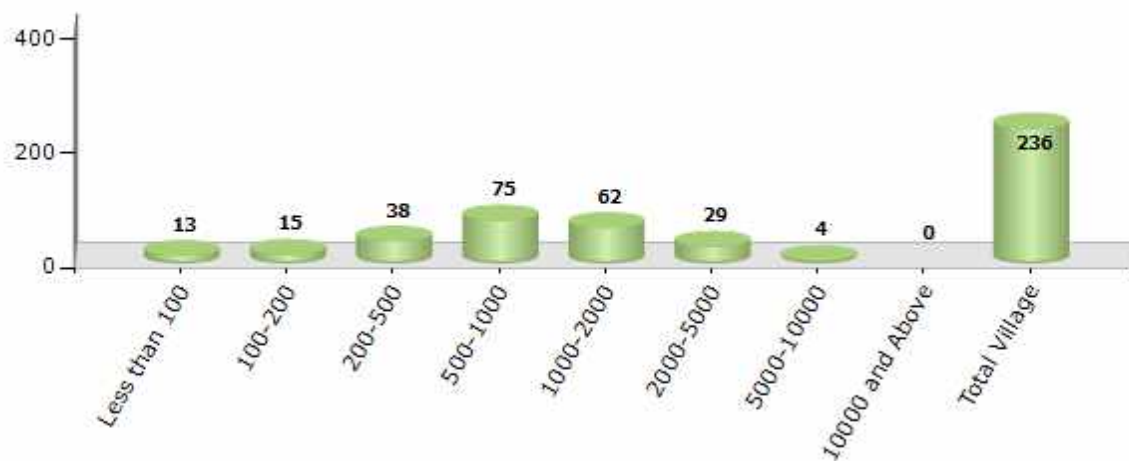
Contd....

## Demographics

### Number of Villages by Population Size - 2011

Less than 100	100-200	200-500	500-1000	1000-2000	2000-5000	5000-10000	10000 and Above	Total Village
13	15	38	75	62	29	4	0	236

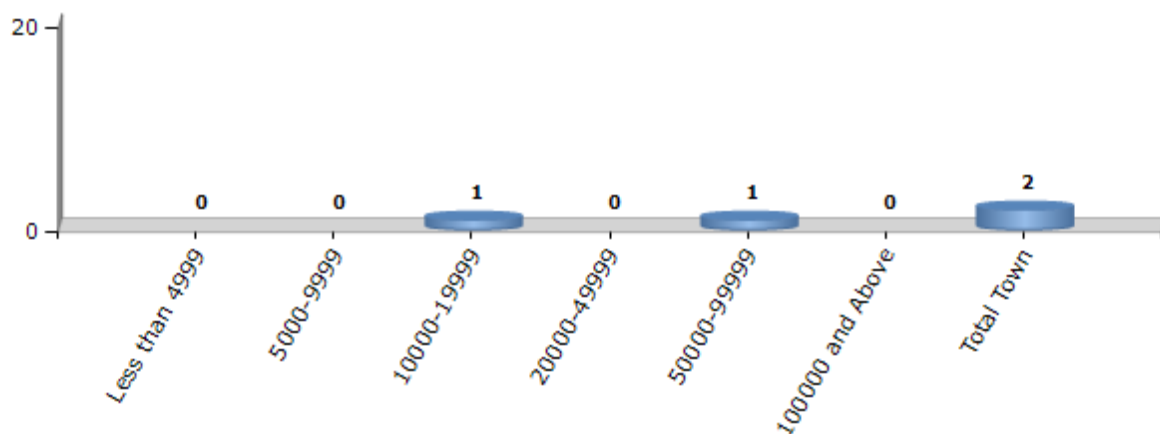
Number of Villages by Population Size - 2011



### Number of Towns by Population Size - 2011

Less than 4999	5000-9999	10000-19999	20000-49999	50000-99999	100000 and Above	Total Town
0	0	1	0	1	0	2

Number of Towns by Population Size - 2011

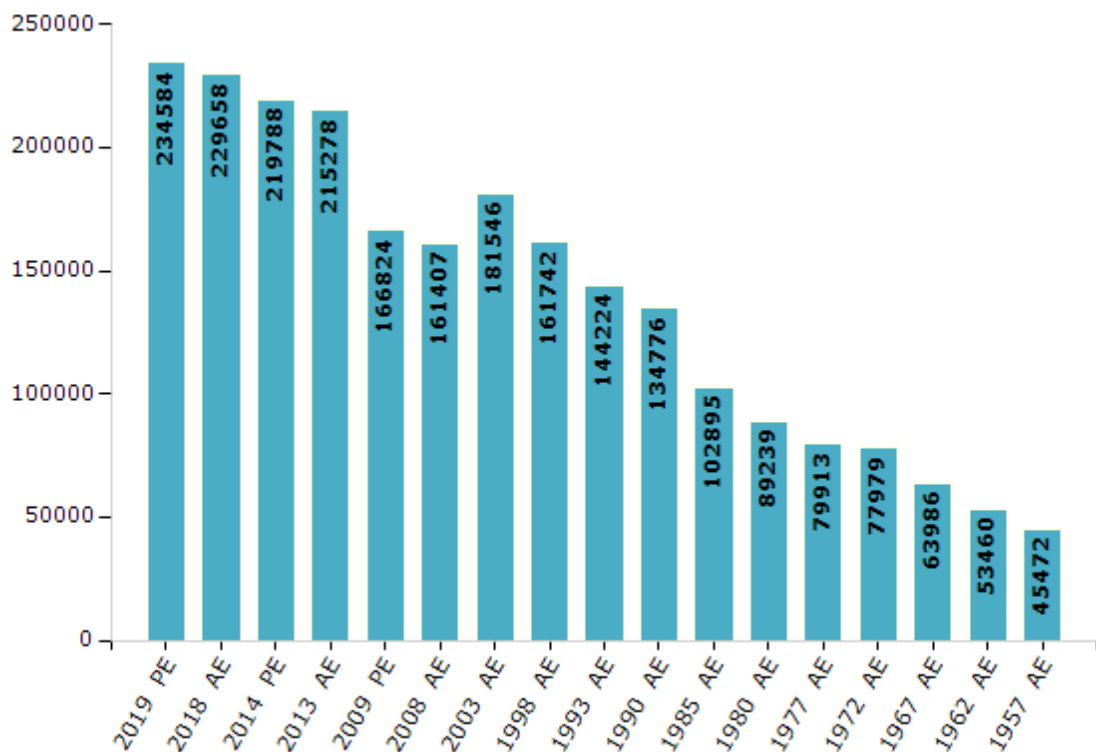


## Electoral Features

### Electors by Male & Female

Year	Male	Female	Others	Total	Year	Male	Female	Others	Total
2019 PE	124504	110078	2	234584	1993 AE	77831	66393	-	144224
2018 AE	121776	107876	6	229658	1990 AE	72658	62118	-	134776
2014 PE	117976	101811	1	219788	1985 AE	54043	48852	-	102895
2013 AE	115736	99540	2	215278	1980 AE	46597	42642	-	89239
2009 PE	90604	76220	-	166824	1977 AE	41868	38045	-	79913
2008 AE	87333	74074	-	161407	1972 AE	40777	37202	-	77979
2004 PE	-	-	-	-	1967 AE	-	-	-	63986
2003 AE	97488	84058	-	181546	1962 AE	-	-	-	53460
1999 PE	-	-	-	-	1957 AE	-	-	-	45472
1998 AE	87161	74581	-	161742	1952 AE	-	-	-	-

Number of Electors



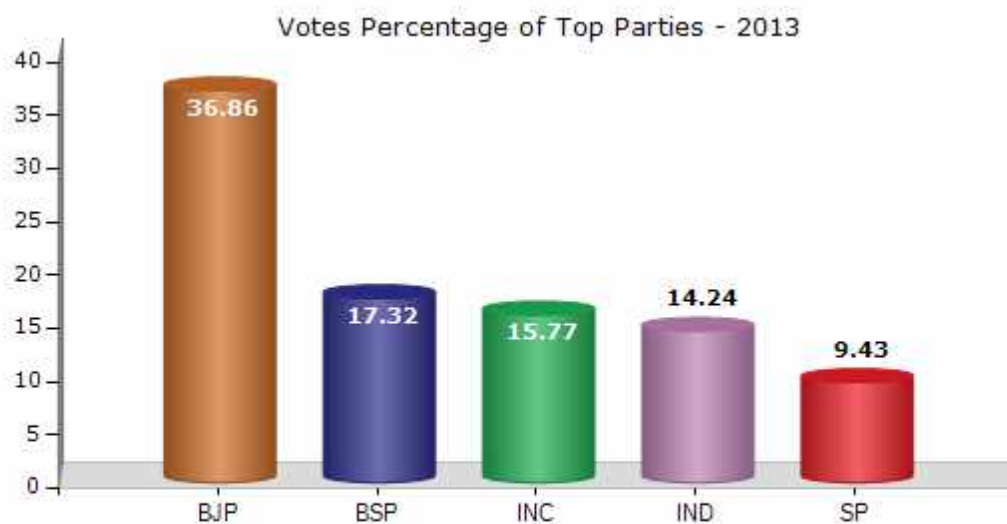
Note : AE : Assembly Election, PE : Assembly Segment of Parliamentary Election



## Historical Summary Election Results

### Summary Result of Assembly Election - 2013

Candidate Name	Party	Votes	Votes %
Kusum Singh Mahdele	BJP	54778	36.86
Lodhi Mahendra Pal Varma	BSP	25742	17.32
Meena Singh Yadav	INC	23439	15.77
Ram Autar Urf Bablu Pathak	IND	21162	14.24
Raj Kumar Jain Urf Raju Jain	SP	14020	9.43
Sourabh Urf Gudda Gupta	IND	1493	1
Ramlal	IND	921	0.62
Bhopalsingh	IND	893	0.6
Jairam Urf Bablu Yadav	GGP	863	0.58
Krishna Gopal	SAMSP	824	0.55
Ramnath	IND	748	0.5
Indrapal Singh	IND	659	0.44
	NOTA	3071	2.07



## Polling Station Level Election Results

### Number and Name of Polling Stations (PS) (2013)

Number of Polling Stations	Name of Polling Stations	Number of Polling Stations	Name of Polling Stations
1	Gumanaganj	22	Sinhai
2	Bilahi	23	Dhawari
3	Padaraha	24	Patha
4	Nimaha	25	Simarakhurd
5	Devarabhapatapur	26	Majhagany
6	Devarabhapatapur	27	Balupur
7	Simarakala	28	Bara Kagare Ka
8	Sabdu	29	Bhanapur
9	Dungaraho	30	Barakola Khurd
10	Bariyarpur Bhumiyan	31	Chamaran Purava
11	Kudai	32	Udaipur
12	Bhapatapur Kurmiyan	33	Dhagari
13	Bhapatapur Kurmiyan	34	San Guraiya
14	Jhinna	35	Silona
15	Bagha	36	Jaitupur
16	Salaiya	37	Harasaini
17	Banaharikala	38	Pharasvaha
18	Banaharikala	39	Layancha
19	Hanumatapur	40	Bira
20	Raipur Tapariyan	41	Bira
21	Kunvarpur	42	Biharapurava

Contd....

## Polling Station Level Election Results

### Polling Station-wise Votes Secured by Overall Top Five Parties in Panna Assembly in Assembly Election (AE) under Khajuraho Parliamentary Constituency in Madhya Pradesh (2013)

Number of Polling Station	Winner - Kusum Singh Mahdele (BJP)	Runner-up - Lodhi Mahendra Pal Varma (BSP)	3rd - Meena Singh Yadav (INC)	4th - Ram Autar Urf Bablu Pathak (IND)	5th - Raj Kumar Jain Urf Raju Jain (SP)	NOTA	Other	Total Votes Secured
36	308	80	14	24	151	10	21	608
37	343	18	39	18	153	4	16	591
38	121	44	13	226	13	6	26	449
39	168	61	54	17	190	10	9	509
40	399	96	57	58	81	32	54	777
41	504	55	53	283	38	9	49	991
42	386	31	14	26	44	3	10	514
43	189	12	34	248	47	6	26	562
44	107	36	171	71	61	13	23	482
45	68	393	24	60	22	5	19	591
46	279	121	16	19	108	13	23	579
47	275	283	10	58	76	25	46	773
48	306	54	7	29	57	3	16	472
49	27	100	8	101	36	5	6	283
50	138	66	19	39	47	13	26	348
51	161	277	70	68	49	24	49	698
52	201	132	8	118	13	4	30	506
53	87	422	10	8	6	11	22	566
54	59	329	153	6	25	8	30	610
55	23	343	56	17	11	9	21	480
56	251	239	145	14	163	17	37	866
57	164	14	169	77	330	5	42	801
58	400	224	18	49	264	47	55	1057
59	232	388	95	67	22	31	28	863
60	175	499	111	88	93	32	65	1063
61	93	180	52	91	151	32	39	638
62	105	364	8	35	97	11	20	640
63	186	38	163	22	86	5	17	517
64	101	26	206	22	70	2	17	444
65	265	199	28	63	7	17	36	615
66	138	73	120	60	179	5	34	609
67	168	86	121	29	227	32	34	697
68	153	123	48	128	5	13	26	496
69	19	48	198	158	9	12	41	485
70	153	256	63	138	14	9	25	658

Contd....

## Polling Station Level Election Results

### Winner, Runner-up and 3rd Party Position & Winning Margin According to Polling Stations in Panna Assembly in Assembly Election (AE) under Khajuraho Parliamentary Constituency in Madhya Pradesh (2013)

Polling Station Number	Winner Party	Winner Votes (%)	Runner-up Party	Runner-up Votes (%)	Winning Margin Votes (%)	Third Party	Third Party Votes (%)	Other Votes (%)
67	SP	227 (32.57)	BJP	168 (24.1)	59 (8.47)	INC	121 (17.36)	181 (25.97)
68	BJP	153 (30.85)	IND (RAUBP)	128 (25.81)	25 (5.04)	BSP	123 (24.8)	92 (18.55)
69	INC	198 (40.82)	IND (RAUBP)	158 (32.58)	40 (8.24)	BSP	48 (9.9)	81 (16.7)
70	BSP	256 (38.91)	BJP	153 (23.25)	103 (15.66)	IND (RAUBP)	138 (20.97)	111 (16.87)
71	BJP	141 (29.68)	IND (RAUBP)	136 (28.63)	5 (1.05)	BSP	94 (19.79)	104 (21.89)
72	BSP	289 (39.21)	BJP	279 (37.86)	10 (1.35)	IND (RAUBP)	74 (10.04)	95 (12.89)
73	BSP	233 (34.16)	BJP	192 (28.15)	41 (6.01)	INC	98 (14.37)	159 (23.31)
74	BSP	437 (69.81)	BJP	93 (14.86)	344 (54.95)	IND (RAUBP)	30 (4.79)	66 (10.54)
75	BSP	415 (55.04)	BJP	226 (29.97)	189 (25.07)	IND (RAUBP)	37 (4.91)	76 (10.08)
76	BSP	599 (67.68)	BJP	223 (25.2)	376 (42.48)	IND (RAUBP)	16 (1.81)	47 (5.31)
77	BSP	457 (70.52)	BJP	127 (19.6)	330 (50.92)	IND (SUGG)	14 (2.16)	50 (7.72)
78	INC	226 (37.23)	BSP	186 (30.64)	40 (6.59)	SP	75 (12.36)	120 (19.77)
79	BJP	264 (51.97)	INC	147 (28.94)	117 (23.03)	IND (RAUBP)	38 (7.48)	59 (11.61)
80	BJP	183 (47.41)	BSP	112 (29.02)	71 (18.39)	INC	45 (11.66)	46 (11.92)
81	BJP	237 (38.92)	IND (RAUBP)	111 (18.23)	126 (20.69)	SP	108 (17.73)	153 (25.12)
82	BJP	127 (26.51)	SP	98 (20.46)	29 (6.05)	INC	84 (17.54)	170 (35.49)
83	BSP	253 (34.61)	BJP	203 (27.77)	50 (6.84)	IND (RAUBP)	113 (15.46)	162 (22.16)
84	BSP	477 (80.57)	BJP	34 (5.74)	443 (74.83)	INC	26 (4.39)	55 (9.29)
85	BSP	432 (66.36)	BJP	80 (12.29)	352 (54.07)	INC	66 (10.14)	73 (11.21)
86	BSP	395 (54.94)	BJP	193 (26.84)	202 (28.1)	IND (RAUBP)	34 (4.73)	97 (13.49)
87	BSP	200 (41.32)	BJP	171 (35.33)	29 (5.99)	INC	66 (13.64)	47 (9.71)
88	BSP	308 (53.29)	BJP	125 (21.63)	183 (31.66)	INC	95 (16.44)	50 (8.65)
89	BSP	398 (67.12)	BJP	93 (15.68)	305 (51.44)	INC	59 (9.95)	43 (7.25)
90	BSP	258 (31.89)	IND (RAUBP)	158 (19.53)	100 (12.36)	BJP	143 (17.68)	250 (30.9)
91	BSP	423 (66.09)	BJP	100 (15.63)	323 (50.46)	INC	53 (8.28)	64 (10)
92	BSP	551 (62.83)	BJP	131 (14.94)	420 (47.89)	IND (RAUBP)	68 (7.75)	127 (14.48)
93	BSP	279 (52.15)	BJP	113 (21.12)	166 (31.03)	IND (RAUBP)	84 (15.7)	59 (11.03)
94	BSP	383 (69.26)	BJP	75 (13.56)	308 (55.7)	SP	38 (6.87)	57 (10.31)
95	BSP	398 (39.25)	BJP	390 (38.46)	8 (0.79)	IND (RAUBP)	59 (5.82)	167 (16.47)
96	BJP	145 (30.79)	BSP	133 (28.24)	12 (2.55)	IND (RAUBP)	88 (18.68)	105 (22.29)
97	BJP	236 (26.37)	INC	181 (20.22)	55 (6.15)	BSP	174 (19.44)	304 (33.97)
98	BSP	238 (43.75)	BJP	222 (40.81)	16 (2.94)	INC	23 (4.23)	61 (11.21)
99	BJP	177 (26.78)	SP	151 (22.84)	26 (3.94)	IND (RAUBP)	144 (21.79)	189 (28.59)

Contd....

## Socio-Economic Amenities - Rural

### Access to Education Facilities

Particulars	Number of Village (% of Population)				
	Available	Not Available	If Not Available (Distance of Nearest Facility)		
			A	B	C
Govt. Primary School	220 (99)	16 (1)	7 (0)	1 (0)	0 (0)
Private Primary School	23 (24)	213 (76)	0 (0)	0 (0)	0 (0)
Govt. Middle School	142 (83)	94 (17)	59 (12)	22 (4)	3 (0)
Private Middle School	15 (15)	221 (85)	0 (0)	0 (0)	0 (0)
Govt. Secondary School	17 (20)	219 (80)	45 (16)	101 (39)	55 (18)
Private Secondary School	4 (5)	232 (95)	0 (0)	3 (1)	0 (0)
Govt. Senior Secondary School	10 (14)	226 (86)	30 (13)	74 (24)	96 (36)
Private Senior Secondary School	3 (2)	233 (98)	0 (0)	3 (2)	1 (1)
Govt. Arts and Science Degree College	0 (0)	236 (100)	5 (2)	36 (13)	165 (72)
Private Arts and Science Degree College	0 (0)	236 (100)	0 (0)	0 (0)	0 (0)
Govt. Engineering College	0 (0)	236 (100)	0 (0)	1 (0)	134 (61)
Private Engineering College	0 (0)	236 (100)	0 (0)	1 (1)	56 (23)
Govt. Medicine College	0 (0)	236 (100)	0 (0)	0 (0)	149 (62)
Private Medicine College	0 (0)	236 (100)	0 (0)	0 (0)	0 (0)
Govt. Management Institute	0 (0)	236 (100)	1 (0)	3 (1)	104 (48)
Private Management Institute	0 (0)	236 (100)	0 (0)	0 (0)	48 (21)
Govt. Polytechnic	0 (0)	236 (100)	1 (1)	14 (4)	219 (95)
Private Polytechnic	0 (0)	236 (100)	0 (0)	0 (0)	0 (0)
Govt. Vocational Training School/ITI	0 (0)	236 (100)	1 (1)	19 (6)	213 (93)
Private Vocational Training School/ITI	0 (0)	236 (100)	0 (0)	0 (0)	1 (0)
Govt. Non Formal Training Centre	0 (0)	236 (100)	1 (1)	15 (5)	93 (45)
Private Non Formal Training Centre	0 (0)	236 (100)	0 (0)	4 (1)	120 (47)
Govt. School For Disabled	0 (0)	236 (100)	2 (1)	5 (2)	156 (73)
Private School For Disabled	0 (0)	236 (100)	0 (0)	0 (0)	0 (0)
Government Others	0 (0)	236 (100)	0 (0)	0 (0)	0 (0)
Private Others	0 (0)	236 (100)	0 (0)	0 (0)	0 (0)

Note : Distance A : Less than 5 km; B : Between 5-10 km; C : 10+ km.; Source : Data Analysis is based on 2011 Census.

## DISCLAIMER

The Terms of Use and Disclaimer of Datanet India Private Limited (hereinafter referred to as "Datanet") for use of this analysis report of **Panna Assembly Constituency (Panna Vidhan Sabha) :-**

1. **Assembly Factbook™** is a Registered Trade Mark owned by Datanet.
2. All the maps are sketched and graphical representation only and have not been drawn to the scale and also not to represent the actual geographical area or boundary of the unit.
3. The data for the aforesaid analysis is based on authentic sources and has been culled from the various publications of Census, CSO and NSSO for district and block level data, various central and state government departments, Central & State Elections Commissions and the concerned Returning Officers' releases, Electoral Rolls, Election results and allied publications, internal assessment, surveys, estimates and analysis. Therefore, certain adjustment of data at micro level may have been done to arrive closer to the macro data.
4. Data have been provided on an "As Is" and "As AVAILABLE" basis
5. The colours shown in the maps or diagram and charts of a particular party, alliance or AC are indicative and do not represent them.
6. This publication which includes maps, sheets, graphs and data would be the property under copyright of Datanet only. The user may use these for its internal study, analysis and research purposes. It's public display, re-selling or any commercial uses by the user are not allowed.
7. Datanet has taken due care and caution in compilation and processing of data and allied information, but does not guarantee the accuracy, adequacy or completeness of any information/analysis and will be not responsible for any errors or omissions or for the results obtained from the use of such information/analysis.
8. All the contents for the publication have been culled from various authentic sources and Datanet reasonably believes such sources to be reliable, but does not make any representations, express or implied as to the accuracy or fitness of use of such information. The information or contents of the information/analysis do not constitute advice and should not be relied upon in making (or refraining from making) any decision. Any reliance placed upon the information provided by Datanet is the sole responsibility and strictly at the user's risk.
9. In no event will Datanet be liable for any damages (including, without limitation, damages for loss of business projects, or loss of profits) arising in contract, tort or otherwise from the use of or inability to use any of its contents, or from any action taken (or refrained from being taken) as a result of using the analysis or any of its contents. Datanet its directors, owners, editors, officials, employees, distributor and agents or any associate will not be liable for any errors in the information contained or any consequences arising from the use of the contents of the provided information/analysis.
10. If any provision of these terms and conditions is held invalid or illegal or unenforceable for any reason by any court of competent jurisdiction, such provision shall be severed and the remainder of provisions of the terms and conditions shall continue in full force and effect as if the Term of Use had been executed with the invalid, illegal or unenforceable provision eliminated.
11. If there are any discrepancies in the information provided, please bring it to attention of Datanet for suitable rectification measures.

Buy Online This Complete Book At  
**Datanet India eBooks Store**

[www.indiastatpublications.com](http://www.indiastatpublications.com)

or go directly at

[http://www.indiastatpublications.com/  
Assembly\\_factbook/Madhya\\_Pradesh/Khajuraho/Panna](http://www.indiastatpublications.com/Assembly_factbook/Madhya_Pradesh/Khajuraho/Panna)

 **indiastat** elections

