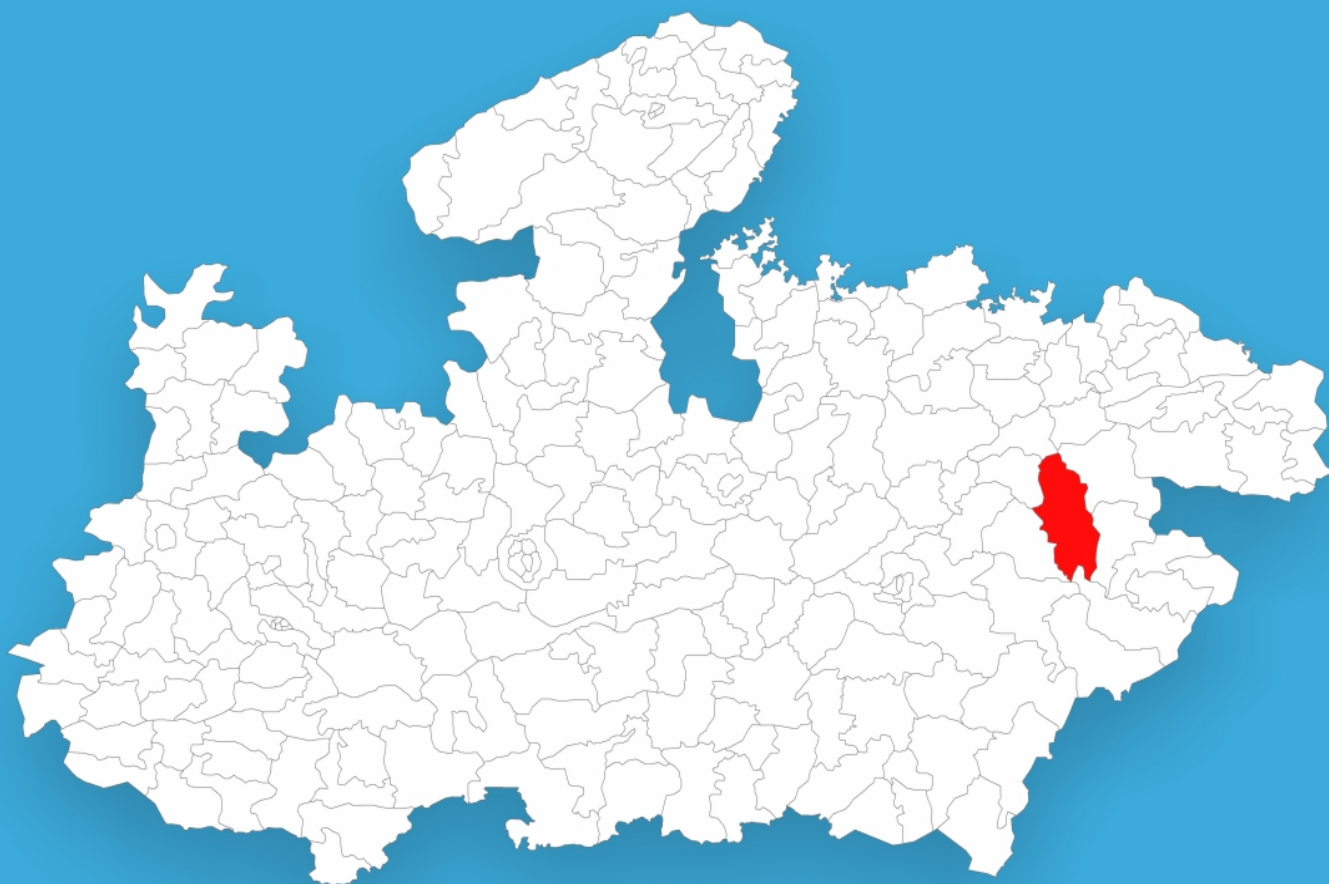




Madhya Pradesh

Assembly Factbook™

Manpur Assembly Constituency

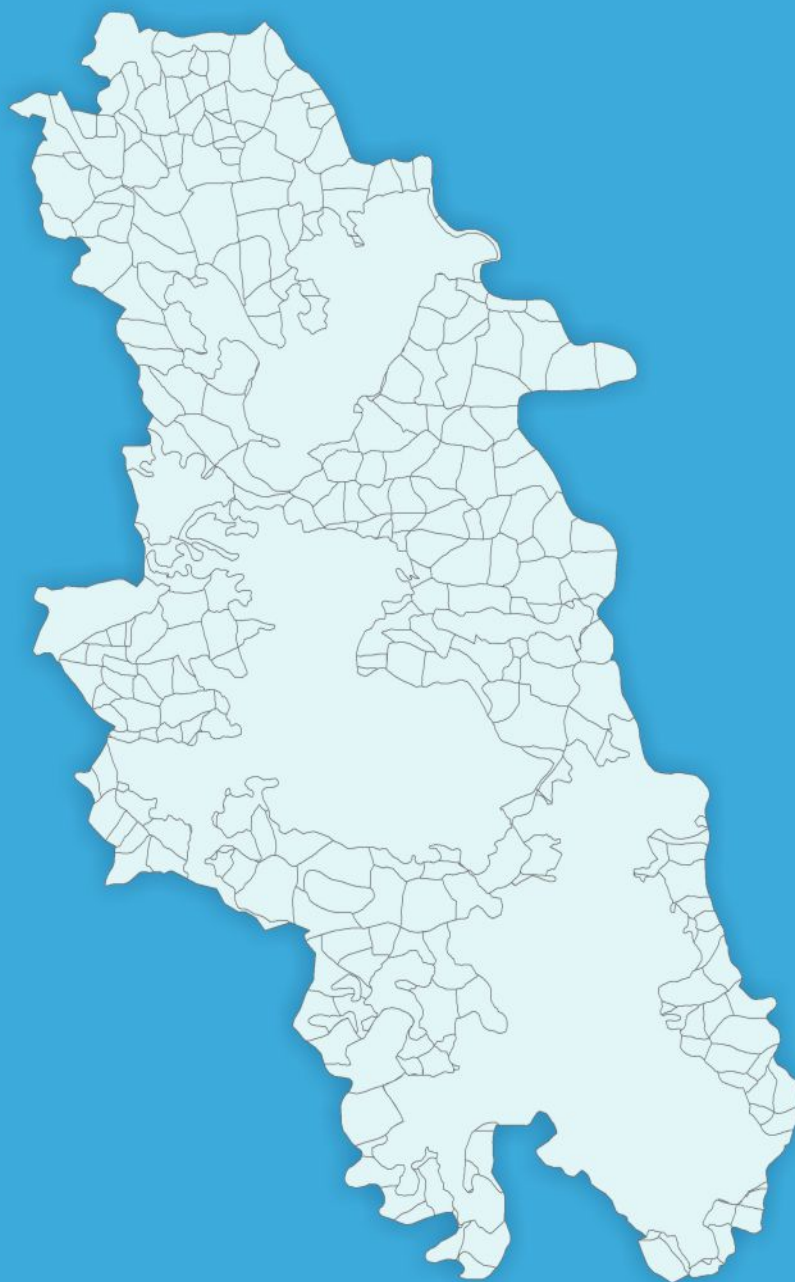


Key Electoral Data of Manpur
Assembly Constituency (Vidhan Sabha)

Madhya Pradesh

Assembly Factbook™

Manpur Assembly Constituency



Manpur Vidhan Sabha

Editor & Director

Dr. R.K. Thukral

Research Editor

Dr. Shafeeq Rahman

**Compiled, Researched and Published by
Datanet India Pvt. Ltd.**

D-100, 1st Floor,
Okhla Industrial Area, Phase-I,
New Delhi- 110020.
Ph.: 91-11- 43580781-84
Email : support@indiastatpublications.com
Website : www.indiastatelections.com

Online Book Store :

www.indiastatpublications.com

Report No. : AFB/MP-090-0125

ISBN : 978-93-6219-420-6

First Edition : January, 2018

Eighth Updated Edition : January, 2025

Price : Rs.11500/-

US\$ 310

© Datanet India Pvt. Ltd.

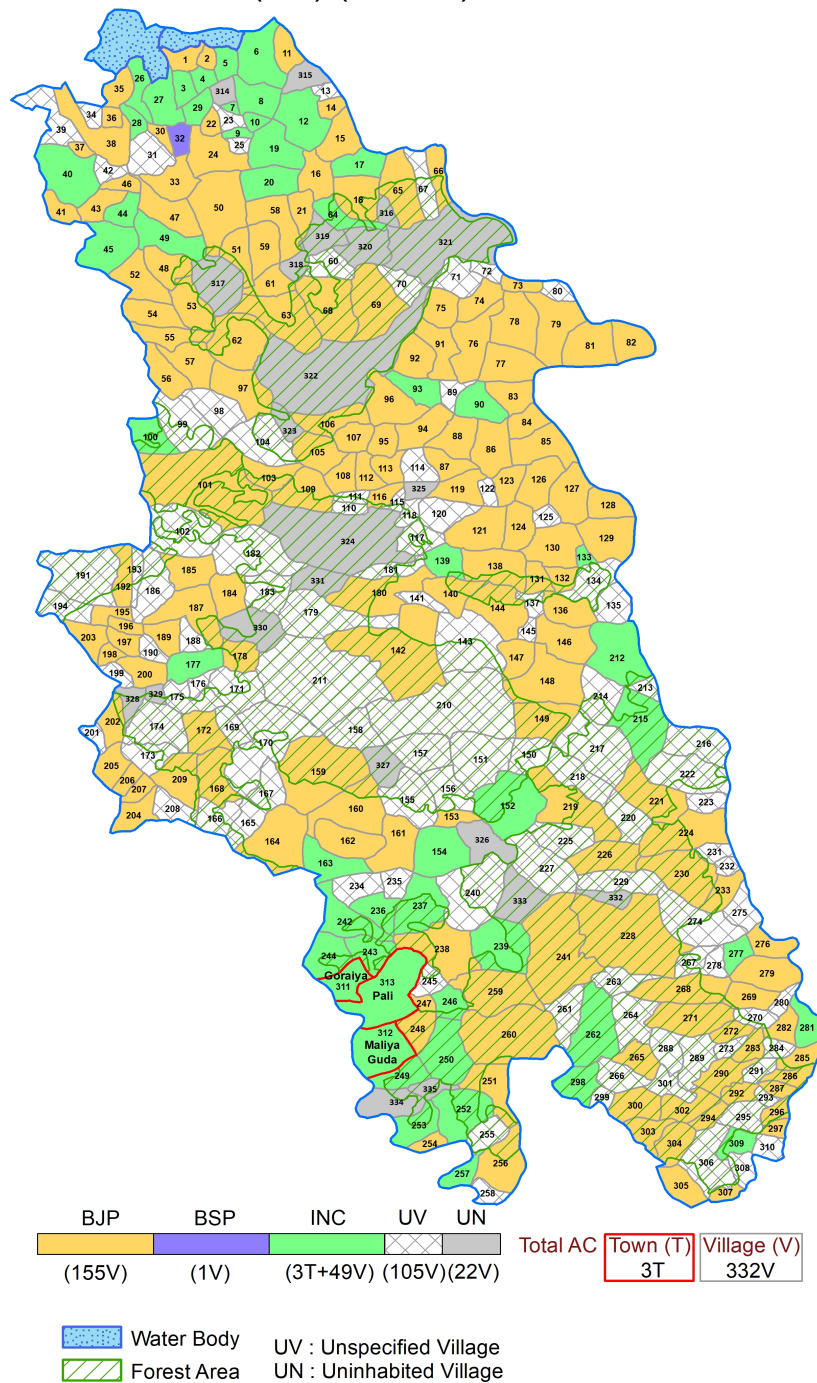
All rights reserved. No part of this book may be reproduced, stored in a retrieval system or transmitted in any form or by any means, mechanical photocopying, photographing, scanning, recording or otherwise without the prior written permission of the publisher. Please refer to Disclaimer at page no. 237 for the use of this publication.

Printed in India

No.	Particulars	Page No.
	Introduction	
1	Assembly Constituency - (Vidhan Sabha) at a Glance Features of Assembly as per Delimitation Commission of India (2008)	1-2
	Location and Political Maps	
2	Location Map Boundaries of Assembly Constituency - (Vidhan Sabha) in District Boundaries of Assembly Constituency under Parliamentary Constituency - (Lok Sabha) Town & Village-wise Winner Parties- 2024, 2023, 2019, 2018, 2014, 2013, 2009 and 2008	3-11
	Administrative Setup (2011)	
3	District Sub-district Towns Villages Inhabited Villages Uninhabited Villages Village Panchayat Intermediate Panchayat	12-27
	Demographics (2011)	
4	Population Households Rural/Urban Population Towns and Villages by Population Size Sex Ratio (Total & 0-6 Years) Religious Population Social Population Literacy Rate	28-29
	Electoral Features	
5	Important Dates of Last Elections Held Electors by Gender Service Electors Voters Voters Turnout Polling Stations & Average Number of Electors per Polling Station Electors by Age Group Present Elected Representatives	30-35
	Historical Summary Election Results	
6	Vote Share of Major Parties Winning Margin (Number & Percentage) Polarity of Parties Summary Result of Assembly Segment of Parliamentary Elections 2024, 2019, 2014 and 2009 Summary Result of Assembly Elections 2023, 2018, 2013 and 2008	36-45
	Polling Station Level Election Results	
7	Name and Number of Polling Station 2024, 2023, 2019, 2018, 2014, 2013, 2009 and 2008 Polling Station-wise Electors, Voters & Voters Turnout 2024, 2023, 2019, 2018, 2014, 2013, 2009 and 2008 Polling Station wise Elections Results 2024, 2023, 2019, 2018, 2014, 2013, 2009 and 2008	46-216
	Share of Assembly Constituency	
8	Share of Assembly Constituency - (Vidhan Sabha) in State, District and Parliamentary Constituency - (Lok Sabha)	217
	Socio-Economic Amenities (2011)	
9	Access to Administrative Units Agricultural, Manufacturing and Industrial Commodities Demographic Indicators Education Health & Manpower Drinking Water Supply Sanitation Entertainment and Recreations Infrastructure Power Food Allocation Distribution and Marketing of Agriculture Commodities Infrastructure Transport and Road Infrastructure Communication Banking and Financial Services Land Use Irrigation Source	219-232
10	Abbreviation & Sources	234-235
11	Disclaimer	237

Location & Political Map

Town & Village-wise Winner Parties in Manpur Assembly
Constituency under State Assembly Election
(AE) (No. 90) - 2018



Administrative Setup

List of Village Panchayat & Intermediate Panchayat (Block) Name - 2011

Village Name	Village Panchayat Name	Intermediate Panchayat Name
Dhanwahi	Dhanwahi	Manpur
Dhaurai	Dhaurei	Pali No.2
Dhup Khada	Bhaotra	Pali No.2
Didwariya	Narwar	Pali No.2
Dighiya	Amarpur	Manpur
Dobha	Dobha	Manpur
Dodka	Dodaka	Manpur
Dongari Tola	Dogaritola	Manpur
Dongari Tola	Karauditola	Manpur
Dulhara	Kachhauha	Manpur
Gadariya Tola	Tikuri	Manpur
Gadraula	Kathai	Pali No.2
Amarpur	Amarpur	Manpur
Amgar	Kanchodar	Pali No.2
Gajraha	Bakeli	Manpur
Gajwahi	Barddhar	Pali No.2
Amha	Semariya	Manpur
Amiliha	Amiliha	Pali No.2
Gangital	Kushmaha	Manpur
Garhpuri	Dobha	Manpur
Amiliya	-	Manpur
Amlai	-	Manpur
Ghaghadar	Dhaurei	Pali No.2
Ghaghdaud	Badhkhera	Manpur
Arjhuni	Pahdiya	Pali No.2
Asodh	Asodh	Manpur
Ghaghdar	Ghaghadar	Manpur
Ghun Ghuti	Ghunghuti	Pali No.2
Audhera	Oaudhera	Pali No.2

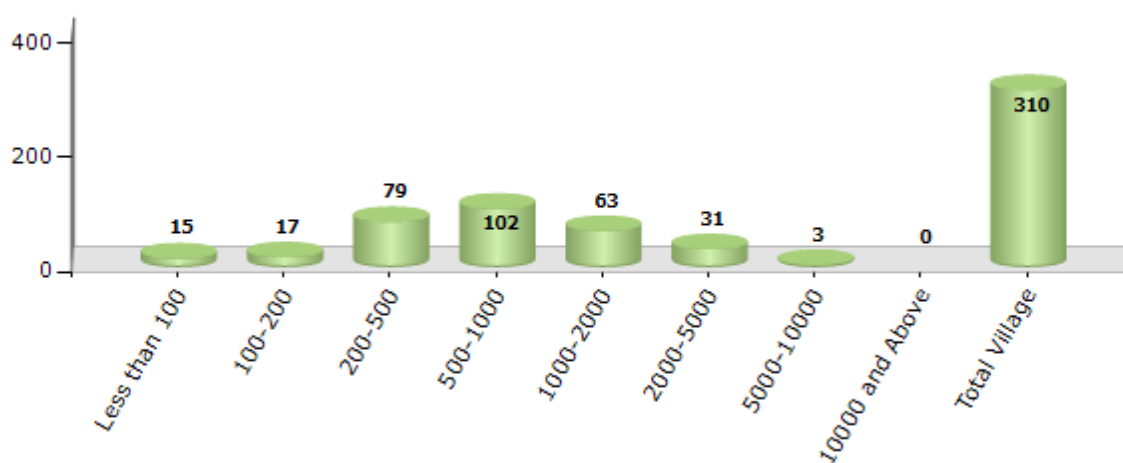
Contd....

Demographics

Number of Villages by Population Size - 2011

Less than 100	100-200	200-500	500-1000	1000-2000	2000-5000	5000-10000	10000 and Above	Total Village
15	17	79	102	63	31	3	0	310

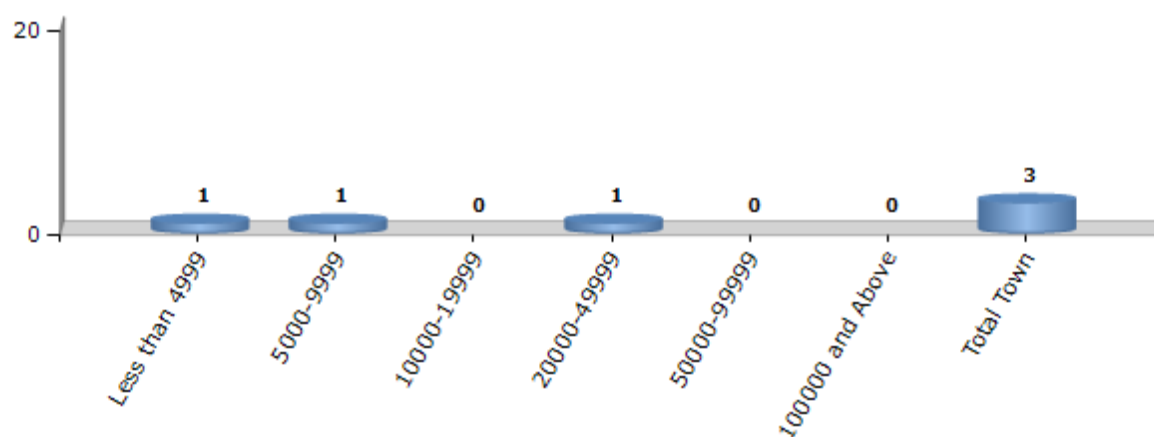
Number of Villages by Population Size - 2011



Number of Towns by Population Size - 2011

Less than 4999	5000-9999	10000-19999	20000-49999	50000-99999	100000 and Above	Total Town
1	1	0	1	0	0	3

Number of Towns by Population Size - 2011



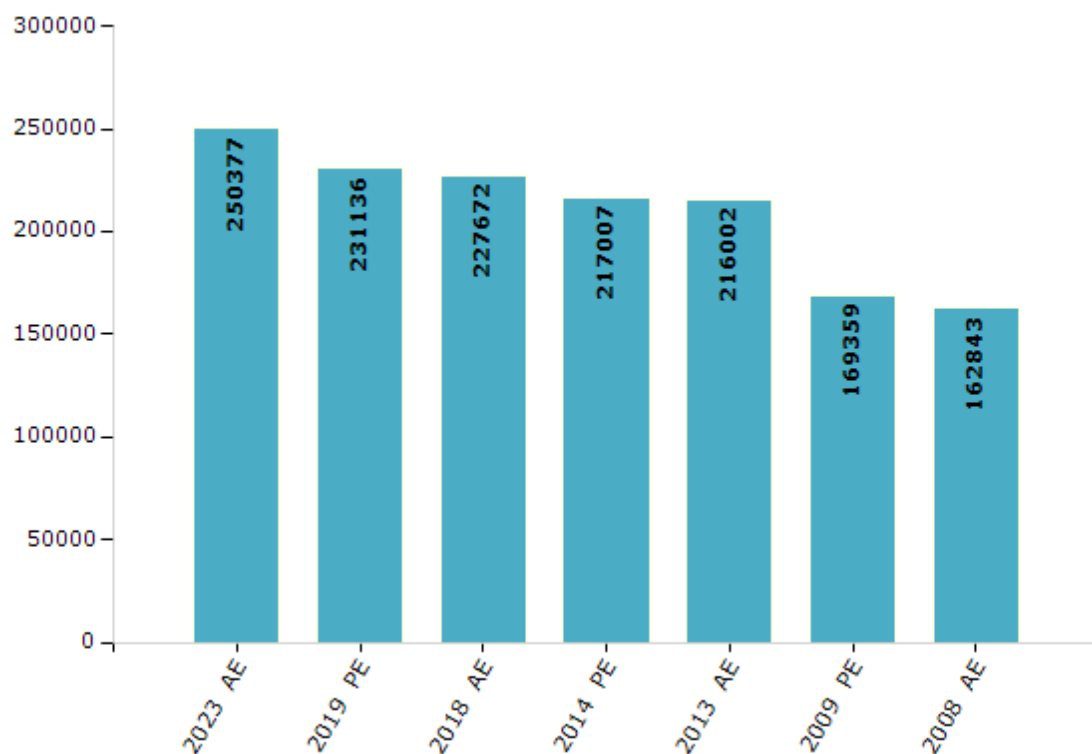
Electoral Features

Electors by Male & Female

Year	Male	Female	Others	Total
2023 AE	128579	121798	0	250377
2019 PE	119173	111963	0	231136
2018 AE	117223	110449	0	227672
2014 PE	111378	105626	3	217007
2013 AE	110981	105019	2	216002
2009 PE	88767	80592	-	169359
2008 AE	84958	77885	-	162843
2004 PE	-	-	-	-
2003 AE	-	-	-	-
1999 PE	-	-	-	-
1998 AE	-	-	-	-

Year	Male	Female	Others	Total
1993 AE	-	-	-	-
1990 AE	-	-	-	-
1985 AE	-	-	-	-
1980 AE	-	-	-	-
1977 AE	-	-	-	-
1972 AE	-	-	-	-
1967 AE	-	-	-	-
1962 AE	-	-	-	-
1957 AE	-	-	-	-
1952 AE	-	-	-	-

Number of Electors

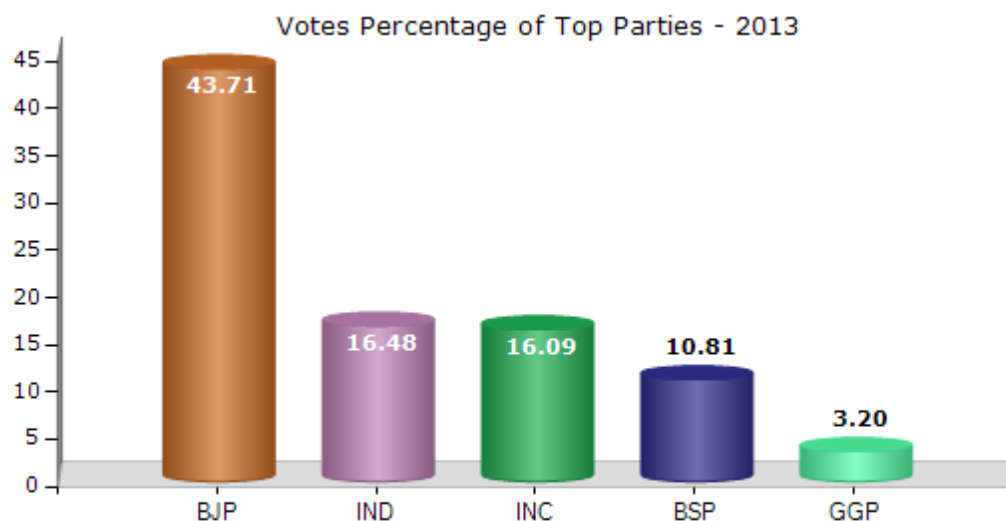


Note : AE : Assembly Election, PE : Assembly Segment of Parliamentary Election

Historical Summary Election Results

Summary Result of Assembly Election - 2013

Candidate Name	Party	Votes	Votes %
Meena Singh	BJP	70024	43.71
Gyanwati Singh	IND	26396	16.48
Shakuntala Pradhan	INC	25778	16.09
Phool Singh Paraste	BSP	17321	10.81
Dhanraj Singh	GGP	5122	3.2
Sundarlal Kol	IND	3039	1.9
Munnalal Baiga	NPEP	2101	1.31
Annu Kol	IND	1244	0.78
Mel Kumar Shiv Sainik	IND	1236	0.77
Roopmati Bai	BSCP	879	0.55
Ram Singh Gond	SP	799	0.5
	NOTA	6262	3.91



Polling Station Level Election Results

Number and Name of Polling Stations (PS) (2018)

Number of Polling Stations	Name of Polling Stations	Number of Polling Stations	Name of Polling Stations
1	Madhy Shala Bhavan Majhokhar	22	Ma. Shala Bhawan Podiya
2	Madhy.Shala Bhawan Dhanwahi	23	Pra Shala Bhavan Pondiya
3	Sashki Prathmik Sala Bhavan Kai Dhanwahi	24	Ju.Ha.School Bhavan Khalaugh
4	Ju.Ha.School Bhawan Utt.Bhag Padakhuri	25	Govt.Kanya Pr.Sh.Bhavan Khalaundh
5	Govt.Pra.Shala Bhavan Padakhuri	26	Ju. Ha. School Bhawan Dakshini Bhag Mugvani
6	Ju.Ha.School Bhawan Purvi Bhag Padakhuri	27	Govt.P.S.Bhavan Madain Tola
7	Shas High School Bhavan New Jobi Padkhuri	28	Ju. Ha. School Bhawan Uttri Bhag Mugvani
8	Ma. Sha. Bhawan Iatma	29	Madhy. Shala Bhawan Dakshin Bhag Asodh
9	Ma. Sha. Bhawan Adarsh Gram Chhap	30	Pra. Shala Bhavan Ashodh
10	Ju. Ha. School Bhawan Indwar (Purbi Bhag)	31	Shak. Pra. Shala Bhavan Baratola (Ashodh)
11	Ju.H. School Bhavan Indwar	32	Ju. Ha. School Bhawan Damoy
12	Govt.Kanya Prath. Shala Bhavan Indwar	33	Kanya Pratha. Shala Bhavan Damoy
13	Sanskrit Higher Seco.School Indwar	34	Govt.Unnat P.S. School Dongaritola (Damoy)
14	Shas. Pra.Shala Bhavan Dongaritoala Bharewa	35	Naveen Prathamik Shala Bhavan Bholagarh
15	Shas. Pra.Shala Bhavan Dongaritoala Atriakt Room Bhareva	36	Govt Un P.S. Bulding Baturhwa
16	Ha. Sec. School Bhawan Madhya Bhag Bhareva	37	Govt.Ma.Shala Bhawan Jhal
17	Shas Ma Vidyalaya Darbar Bhareva	38	Govt.P.S.Jhali Tola
18	Ha Sec. School Dakshin Bhag Bhareva (Dongaritola)	39	Ma.Sha.Bhavan Jhalivar
19	Shas Pra Shala Bhavan Basehi	40	Sash. Pra. Shala Bhavan Hardi (Atirict Kachh)
20	Ma Shala Bhawan Nadavan Kothar (Uttri Bhag)	41	Ma.Shala Bhavan Chitraon
21	Ma.Shala Bhavan Nadavan Kothar(Dakshini Bhag)	42	Shs.Pra.Shala Bhavan Sejawahi

Contd....

Polling Station Level Election Results

Polling Station-wise Votes Secured by Overall Top Five Parties in Manpur Assembly in Assembly Election (AE) under Shahdol Parliamentary Constituency in Madhya Pradesh (2018)

Number of Polling Station	Winner - Meena Singh (BJP)	Runner-up - Gyanvati Singh (INC)	3rd - Rekha Kol (BSP)	4th - Devlal Singh Tekam (GGP)	5th - Ramprasad Baiga (IND)	NOTA	Other	Total Votes Secured
36	143	78	14	40	15	10	19	319
37	168	235	12	1	2	9	32	459
38	176	204	68	1	10	16	30	505
39	178	86	8	131	6	17	38	464
40	262	167	147	6	5	31	26	644
41	332	157	49	3	14	25	27	607
42	425	93	12	56	11	26	22	645
43	448	129	5	7	4	19	8	620
44	353	138	39	1	10	16	9	566
45	222	237	25	0	14	14	24	536
46	119	256	81	11	8	8	36	519
47	273	206	21	16	4	18	28	566
48	129	332	13	0	7	0	14	495
49	353	201	163	3	21	40	40	821
50	113	136	294	1	14	14	25	597
51	267	292	47	2	10	21	23	662
52	275	290	29	0	7	10	19	630
53	203	233	168	4	14	17	32	671
54	280	117	29	0	4	9	7	446
55	158	134	15	13	8	8	10	346
56	233	113	22	5	5	9	4	391
57	325	145	137	0	8	22	19	656
58	119	46	47	1	5	3	21	242
59	487	326	33	4	10	19	15	894
60	176	415	90	6	11	27	59	784
61	229	272	13	5	5	18	26	568
62	259	209	9	2	20	24	50	573
63	147	197	5	0	6	8	9	372
64	244	136	17	0	7	7	7	418
65	169	141	155	0	11	5	17	498
66	95	138	262	1	12	8	17	533
67	149	89	137	1	5	7	15	403
68	140	286	42	1	8	12	14	503
69	121	284	52	0	18	14	20	509
70	83	190	54	3	9	15	14	368

Contd....

Polling Station Level Election Results

Winner, Runner-up and 3rd Party Position & Winning Margin According to Polling Stations in Manpur Assembly in Assembly Election (AE) under Shahdol Parliamentary Constituency in Madhya Pradesh (2018)

Polling Station Number	Winner Party	Winner Votes (%)	Runner-up Party	Runner-up Votes (%)	Winning Margin Votes (%)	Third Party	Third Party Votes (%)	Other Votes (%)
67	BJP	149 (36.97)	BSP	137 (34)	12 (2.97)	INC	89 (22.08)	28 (6.95)
68	INC	286 (56.86)	BJP	140 (27.83)	146 (29.03)	BSP	42 (8.35)	35 (6.96)
69	INC	284 (55.8)	BJP	121 (23.77)	163 (32.03)	BSP	52 (10.22)	52 (10.22)
70	INC	190 (51.63)	BJP	83 (22.55)	107 (29.08)	BSP	54 (14.67)	41 (11.14)
71	INC	190 (51.35)	BJP	122 (32.97)	68 (18.38)	BSP	19 (5.14)	39 (10.54)
72	BJP	280 (65.27)	INC	103 (24.01)	177 (41.26)	BSP	12 (2.8)	34 (7.93)
73	BJP	395 (75.1)	INC	80 (15.21)	315 (59.89)	BSP	28 (5.32)	23 (4.37)
74	INC	238 (50.42)	BJP	219 (46.4)	19 (4.02)	BSP	3 (0.64)	12 (2.54)
75	INC	328 (50.7)	BJP	277 (42.81)	51 (7.89)	IND (RB)	7 (1.08)	35 (5.41)
76	BJP	259 (37.59)	INC	164 (23.8)	95 (13.79)	BSP	160 (23.22)	106 (15.38)
77	BJP	277 (57.35)	INC	188 (38.92)	89 (18.43)	BSP	3 (0.62)	15 (3.11)
78	BJP	240 (46.88)	INC	137 (26.76)	103 (20.12)	BSP	58 (11.33)	77 (15.04)
79	INC	308 (36.71)	BSP	250 (29.8)	58 (6.91)	BJP	179 (21.33)	102 (12.16)
80	BJP	127 (45.2)	INC	113 (40.21)	14 (4.99)	BSP	13 (4.63)	28 (9.96)
81	BJP	203 (49.39)	INC	164 (39.9)	39 (9.49)	BSP	16 (3.89)	28 (6.81)
82	BJP	204 (43.13)	INC	175 (37)	29 (6.13)	BSP	59 (12.47)	35 (7.4)
83	BJP	289 (50.88)	INC	173 (30.46)	116 (20.42)	BSP	61 (10.74)	45 (7.92)
84	BJP	282 (46.69)	INC	271 (44.87)	11 (1.82)	IND (RB)	11 (1.82)	40 (6.62)
85	BJP	176 (52.54)	INC	123 (36.72)	53 (15.82)	IND (RB)	8 (2.39)	28 (8.36)
86	INC	295 (40.19)	BJP	243 (33.11)	52 (7.08)	BSP	127 (17.3)	69 (9.4)
87	BJP	220 (47.93)	INC	138 (30.07)	82 (17.86)	BSP	52 (11.33)	49 (10.68)
88	BJP	272 (40.54)	INC	244 (36.36)	28 (4.18)	BSP	108 (16.1)	47 (7)
89	INC	267 (49.63)	BJP	163 (30.3)	104 (19.33)	BSP	51 (9.48)	57 (10.59)
90	BSP	191 (35.44)	BJP	164 (30.43)	27 (5.01)	INC	120 (22.26)	64 (11.87)
91	BJP	179 (33.09)	INC	170 (31.42)	9 (1.67)	BSP	85 (15.71)	107 (19.78)
92	BJP	196 (59.04)	INC	108 (32.53)	88 (26.51)	IND (RB)	6 (1.81)	22 (6.63)
93	BJP	362 (60.23)	INC	154 (25.62)	208 (34.61)	BSP	39 (6.49)	46 (7.65)
94	BJP	167 (48.83)	INC	128 (37.43)	39 (11.4)	GGP	10 (2.92)	37 (10.82)
95	BJP	112 (48.28)	INC	85 (36.64)	27 (11.64)	BSP	13 (5.6)	22 (9.48)
96	BJP	469 (59.67)	INC	198 (25.19)	271 (34.48)	BSP	30 (3.82)	89 (11.32)
97	BJP	369 (57.75)	INC	169 (26.45)	200 (31.3)	BSP	25 (3.91)	76 (11.89)
98	BJP	532 (64.88)	INC	171 (20.85)	361 (44.03)	BSP	60 (7.32)	57 (6.95)
99	BJP	180 (33.03)	GGP	169 (31.01)	11 (2.02)	INC	94 (17.25)	102 (18.72)

Contd....

Socio-Economic Amenities - Rural

Access to Education Facilities

Particulars	Number of Village (% of Population)				
	Available	Not Available	If Not Available (Distance of Nearest Facility)		
			A	B	C
Govt. Primary School	286 (99)	24 (1)	17 (1)	2 (0)	1 (0)
Private Primary School	31 (30)	279 (70)	0 (0)	0 (0)	0 (0)
Govt. Middle School	187 (85)	123 (15)	59 (7)	0 (0)	0 (0)
Private Middle School	30 (30)	280 (70)	0 (0)	0 (0)	0 (0)
Govt. Secondary School	37 (35)	273 (65)	63 (15)	119 (31)	38 (9)
Private Secondary School	4 (5)	306 (95)	0 (0)	0 (0)	0 (0)
Govt. Senior Secondary School	23 (24)	287 (76)	29 (9)	90 (24)	90 (24)
Private Senior Secondary School	2 (3)	308 (97)	0 (0)	0 (0)	0 (0)
Govt. Arts and Science Degree College	0 (0)	310 (100)	8 (2)	39 (13)	86 (26)
Private Arts and Science Degree College	0 (0)	310 (100)	0 (0)	0 (0)	0 (0)
Govt. Engineering College	0 (0)	310 (100)	0 (0)	0 (0)	155 (58)
Private Engineering College	0 (0)	310 (100)	0 (0)	0 (0)	0 (0)
Govt. Medicine College	0 (0)	310 (100)	0 (0)	0 (0)	181 (68)
Private Medicine College	0 (0)	310 (100)	0 (0)	0 (0)	0 (0)
Govt. Management Institute	0 (0)	310 (100)	1 (0)	0 (0)	112 (41)
Private Management Institute	0 (0)	310 (100)	0 (0)	0 (0)	0 (0)
Govt. Polytechnic	0 (0)	310 (100)	1 (0)	16 (4)	286 (94)
Private Polytechnic	0 (0)	310 (100)	0 (0)	0 (0)	0 (0)
Govt. Vocational Training School/ITI	0 (0)	310 (100)	1 (0)	17 (4)	287 (95)
Private Vocational Training School/ITI	0 (0)	310 (100)	0 (0)	0 (0)	0 (0)
Govt. Non Formal Training Centre	0 (0)	310 (100)	3 (0)	15 (4)	286 (95)
Private Non Formal Training Centre	0 (0)	310 (100)	0 (0)	0 (0)	0 (0)
Govt. School For Disabled	0 (0)	310 (100)	1 (0)	6 (1)	140 (56)
Private School For Disabled	0 (0)	310 (100)	0 (0)	0 (0)	0 (0)
Government Others	0 (0)	310 (100)	1 (0)	3 (1)	306 (99)
Private Others	0 (0)	310 (100)	0 (0)	0 (0)	0 (0)

Note : Distance A : Less than 5 km; B : Between 5-10 km; C : 10+ km.; Source : Data Analysis is based on 2011 Census.

DISCLAIMER

The Terms of Use and Disclaimer of Datanet India Private Limited (hereinafter referred to as "Datanet") for use of this analysis report of **Manpur Assembly Constituency (Manpur Vidhan Sabha)** :-

1. **Assembly Factbook™** is a Registered Trade Mark owned by Datanet.
2. All the maps are sketched and graphical representation only and have not been drawn to the scale and also not to represent the actual geographical area or boundary of the unit.
3. The data for the aforesaid analysis is based on authentic sources and has been culled from the various publications of Census, CSO and NSSO for district and block level data, various central and state government departments, Central & State Elections Commissions and the concerned Returning Officers' releases, Electoral Rolls, Election results and allied publications, internal assessment, surveys, estimates and analysis. Therefore, certain adjustment of data at micro level may have been done to arrive closer to the macro data.
4. Data have been provided on an "As Is" and "As AVAILABLE" basis
5. The colours shown in the maps or diagram and charts of a particular party, alliance or AC are indicative and do not represent them.
6. This publication which includes maps, sheets, graphs and data would be the property under copyright of Datanet only. The user may use these for its internal study, analysis and research purposes. It's public display, re-selling or any commercial uses by the user are not allowed.
7. Datanet has taken due care and caution in compilation and processing of data and allied information, but does not guarantee the accuracy, adequacy or completeness of any information/analysis and will be not responsible for any errors or omissions or for the results obtained from the use of such information/analysis.
8. All the contents for the publication have been culled from various authentic sources and Datanet reasonably believes such sources to be reliable, but does not make any representations, express or implied as to the accuracy or fitness of use of such information. The information or contents of the information/analysis do not constitute advice and should not be relied upon in making (or refraining from making) any decision. Any reliance placed upon the information provided by Datanet is the sole responsibility and strictly at the user's risk.
9. In no event will Datanet be liable for any damages (including, without limitation, damages for loss of business projects, or loss of profits) arising in contract, tort or otherwise from the use of or inability to use any of its contents, or from any action taken (or refrained from being taken) as a result of using the analysis or any of its contents. Datanet its directors, owners, editors, officials, employees, distributor and agents or any associate will not be liable for any errors in the information contained or any consequences arising from the use of the contents of the provided information/analysis.
10. If any provision of these terms and conditions is held invalid or illegal or unenforceable for any reason by any court of competent jurisdiction, such provision shall be severed and the remainder of provisions of the terms and conditions shall continue in full force and effect as if the Term of Use had been executed with the invalid, illegal or unenforceable provision eliminated.
11. If there are any discrepancies in the information provided, please bring it to attention of Datanet for suitable rectification measures.

Buy Online This Complete Book At
Indiastat Publication Book Store

www.indiastatpublications.com

or go directly at

[http://www.indiastatpublications.com/
Assembly_factbook/Madhya_Pradesh/Shahdol/ Manpur](http://www.indiastatpublications.com/Assembly_factbook/Madhya_Pradesh/Shahdol/Manpur)

 **indiastat**elections

ISBN : 978-93-6219-420-6



9 789362 119420 6