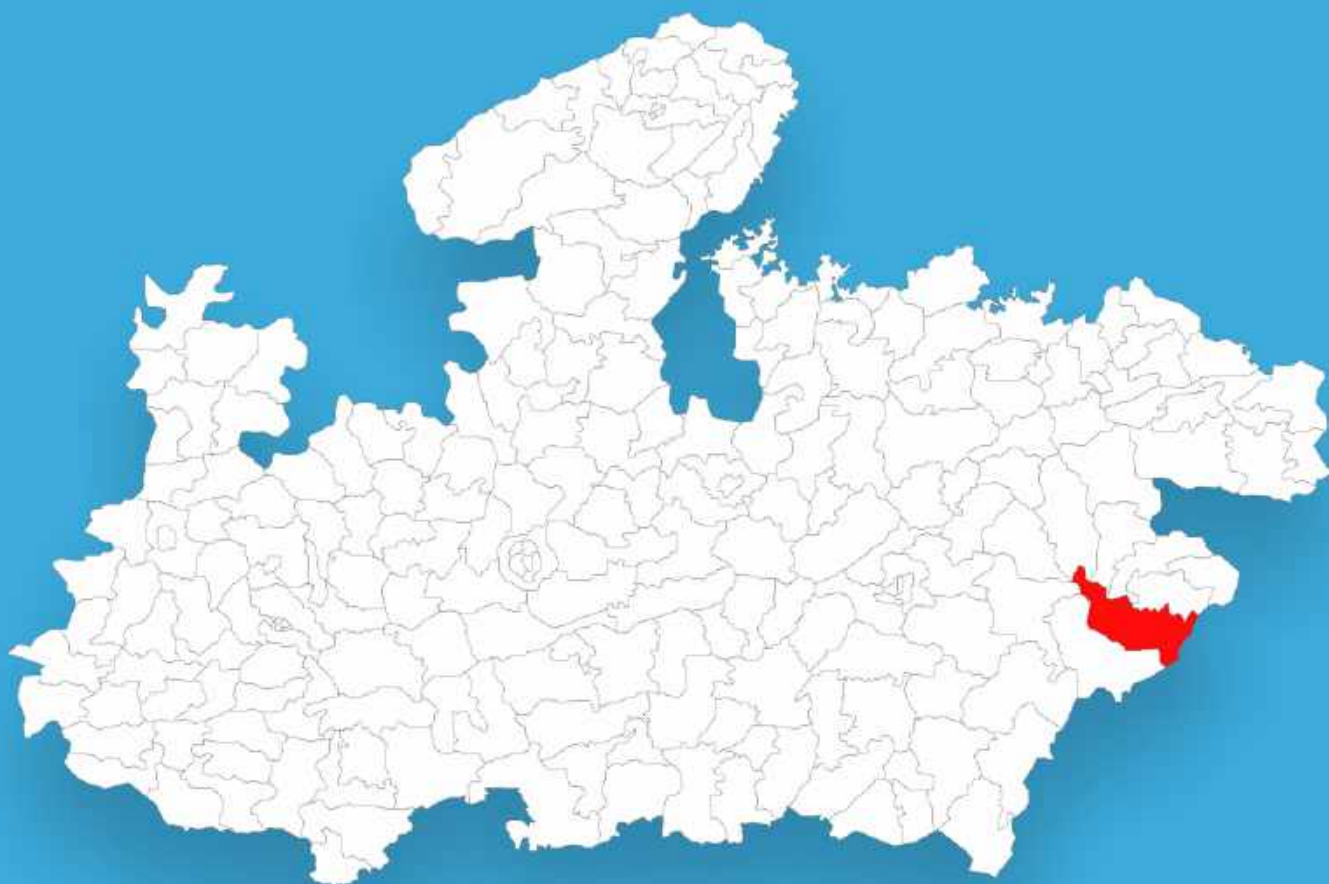




Madhya Pradesh

Assembly Factbook™

Pushprajgarh Assembly Constituency



Key Electoral Data of Pushprajgarh
Assembly Constituency (Vidhan Sabha)

Madhya Pradesh

Assembly Factbook™

Pushprajgarh Assembly Constituency



Pushprajgarh Vidhan Sabha

Editor & Director

Dr. R.K. Thukral

Research Editor

Dr. Shafeeq Rahman

**Compiled, Researched and Published by
Datanet India Pvt. Ltd.**

D-100, 1st Floor,

Okhla Industrial Area, Phase-I,

New Delhi- 110020.

Ph.: 91-11- 43580781-84

Email : support@indiastatpublications.com

Website : www.indiastatelections.com

Online Book Store :

www.indiastatpublications.com

Report No. : AFB/MP-088-0125

ISBN : 978-93-6219-058-1

First Edition : January, 2018

Eighth Updated Edition : January, 2025

Price : Rs.11500/-

US\$ 310

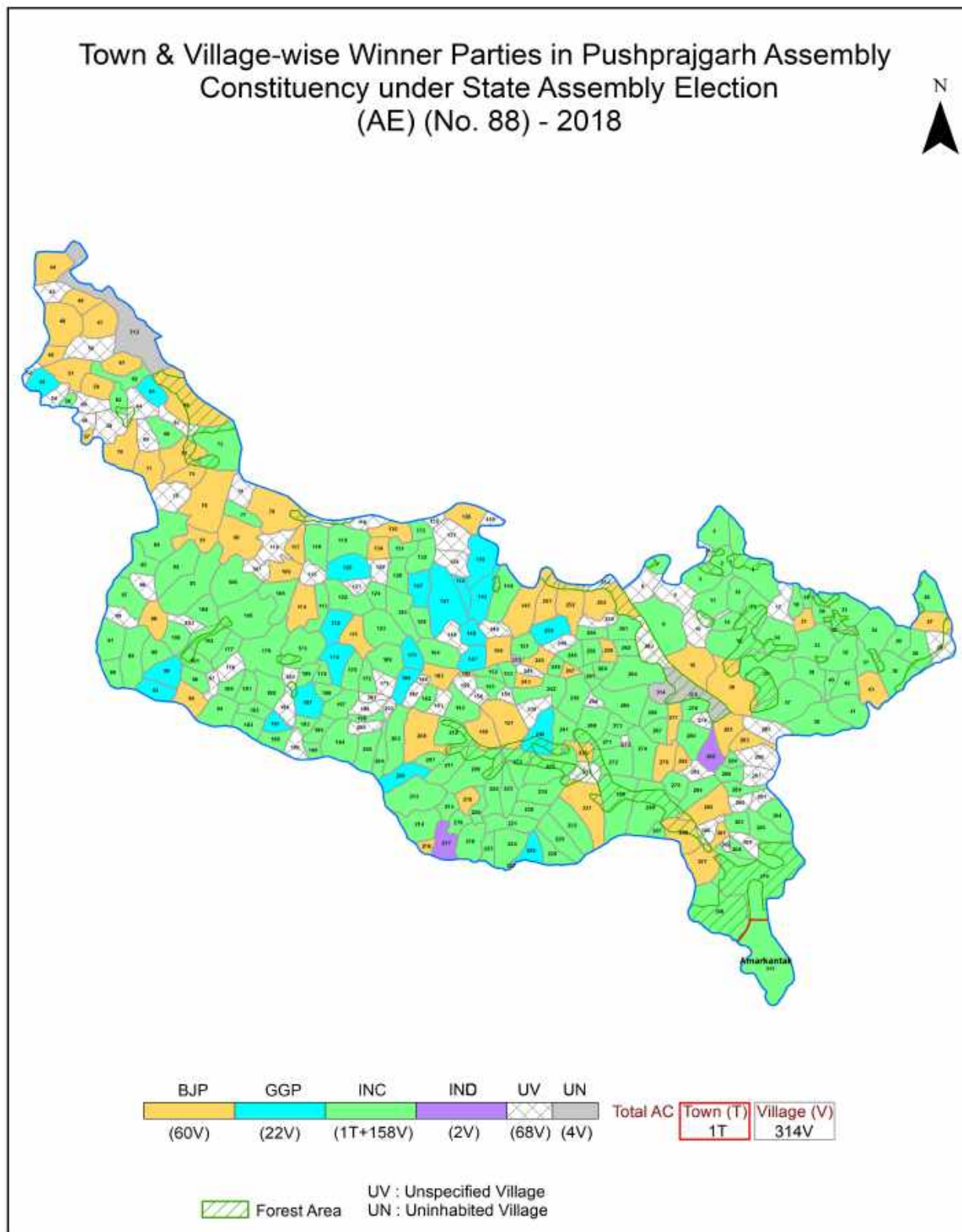
© Datanet India Pvt. Ltd.

All rights reserved. No part of this book may be reproduced, stored in a retrieval system or transmitted in any form or by any means, mechanical photocopying, photographing, scanning, recording or otherwise without the prior written permission of the publisher. Please refer to Disclaimer at page no. 206 for the use of this publication.

Printed in India

No.	Particulars	Page No.
	Introduction	
1	Assembly Constituency - (Vidhan Sabha) at a Glance Features of Assembly as per Delimitation Commission of India (2008)	1-2
	Location and Political Maps	
2	Location Map Boundaries of Assembly Constituency - (Vidhan Sabha) in District Boundaries of Assembly Constituency under Parliamentary Constituency - (Lok Sabha) Town & Village-wise Winner Parties- 2024, 2023, 2018, 2014, 2013, 2009 and 2008	3-11
	Administrative Setup (2011)	
3	District Sub-district Towns Villages Inhabited Villages Uninhabited Villages Village Panchayat Intermediate Panchayat	12-27
	Demographics (2011)	
4	Population Households Rural/Urban Population Towns and Villages by Population Size Sex Ratio (Total & 0-6 Years) Religious Population Social Population Literacy Rate	28-29
	Electoral Features	
5	Important Dates of Last Elections Held Electors by Gender Service Electors Voters Voters Turnout Polling Stations & Average Number of Electors per Polling Station Electors by Age Group Present Elected Representatives	30-35
	Historical Summary Election Results	
6	Vote Share of Major Parties Winning Margin (Number & Percentage) Polarity of Parties Summary Result of Assembly Segment of Parliamentary Elections 2024, 2019, 2014, 2009, 2004 and 1999 Summary Result of Assembly Elections 2023, 2018, 2013, 2008, 2003, 1998, 1993, 1990, 1985, 1980, 1977, 1972, 1967, 1962 and 1957	36-58
	Polling Station Level Election Results	
7	Name and Number of Polling Station 2024, 2023, 2018, 2014, 2013, 2009 and 2008 Polling Station-wise Electors, Voters & Voters Turnout 2024, 2023, 2018, 2014, 2013, 2009 and 2008 Polling Station wise Elections Results 2024, 2023, 2018, 2014, 2013, 2009 and 2008	59-185
	Share of Assembly Constituency	
8	Share of Assembly Constituency - (Vidhan Sabha) in State, District and Parliamentary Constituency - (Lok Sabha)	186
	Socio-Economic Amenities (2011)	
9	Access to Administrative Units Agricultural, Manufacturing and Industrial Commodities Demographic Indicators Education Health & Manpower Drinking Water Supply Sanitation Entertainment and Recreations Infrastructure Power Food Allocation Distribution and Marketing of Agriculture Commodities Infrastructure Transport and Road Infrastructure Communication Banking and Financial Services Land Use Irrigation Source	188-201
10	Abbreviation & Sources	203-204
11	Disclaimer	206

Location & Political Map



Administrative Setup

List of Village Panchayat & Intermediate Panchayat (Block) Name - 2011

Village Name	Village Panchayat Name	Intermediate Panchayat Name
Achalpur	Achalpur	Pushparajgarh
Adawar	Bijapuri No.2	Pushparajgarh
Ahrganwan	Ahrganwa	Pushparajgarh
Alhawar	Alwar	Pushparajgarh
Amadand	Munda	Jaithari
Amauda	Gijri	Pushparajgarh
Amdari	Amdari	Pushparajgarh
Amgawan	Amgawan	Pushparajgarh
Andhiyar Khoh	Piparkhuta	Pushparajgarh
Anjani	Semarwar	Jaithari
Antariya	Atariya	Pushparajgarh
Badhamar	Habeli	Pushparajgarh
Badhar	Patna	Pushparajgarh
Baghad	Sarfa	Pushparajgarh
Baghadi	Atariya	Pushparajgarh
Bagharra	Dharamdas	Pushparajgarh
Baghni Bhawar	Khajurwar	Pushparajgarh
Bahpur	Bahpur	Pushparajgarh
Bahpuri	Bhejri	Pushparajgarh
Baidara	Deora	Pushparajgarh
Baihar	Baihar	Jaithari
Bairagi	Alwar	Pushparajgarh
Bakan	Padri	Pushparajgarh
Bamhani	Bamhani	Pushparajgarh
Banka	Pagana	Jaithari
Baranjh	Baranjh	Pushparajgarh
Barbaspur	Barbaspur	Pushparajgarh
Barsot	Harratola	Pushparajgarh
Bartola	Upharikala	Pushparajgarh

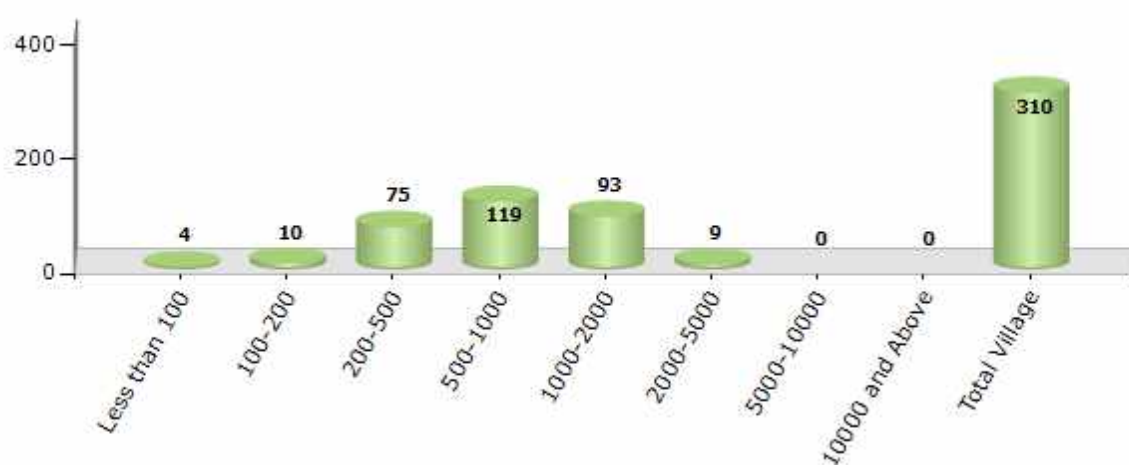
Contd....

Demographics

Number of Villages by Population Size - 2011

Less than 100	100-200	200-500	500-1000	1000-2000	2000-5000	5000-10000	10000 and Above	Total Village
4	10	75	119	93	9	0	0	310

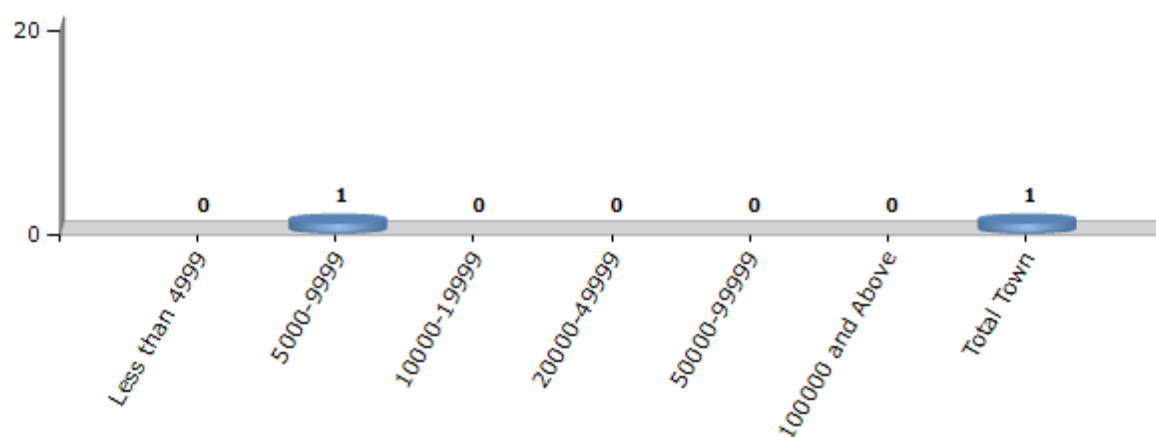
Number of Villages by Population Size - 2011



Number of Towns by Population Size - 2011

Less than 4999	5000-9999	10000-19999	20000-49999	50000-99999	100000 and Above	Total Town
0	1	0	0	0	0	1

Number of Towns by Population Size - 2011



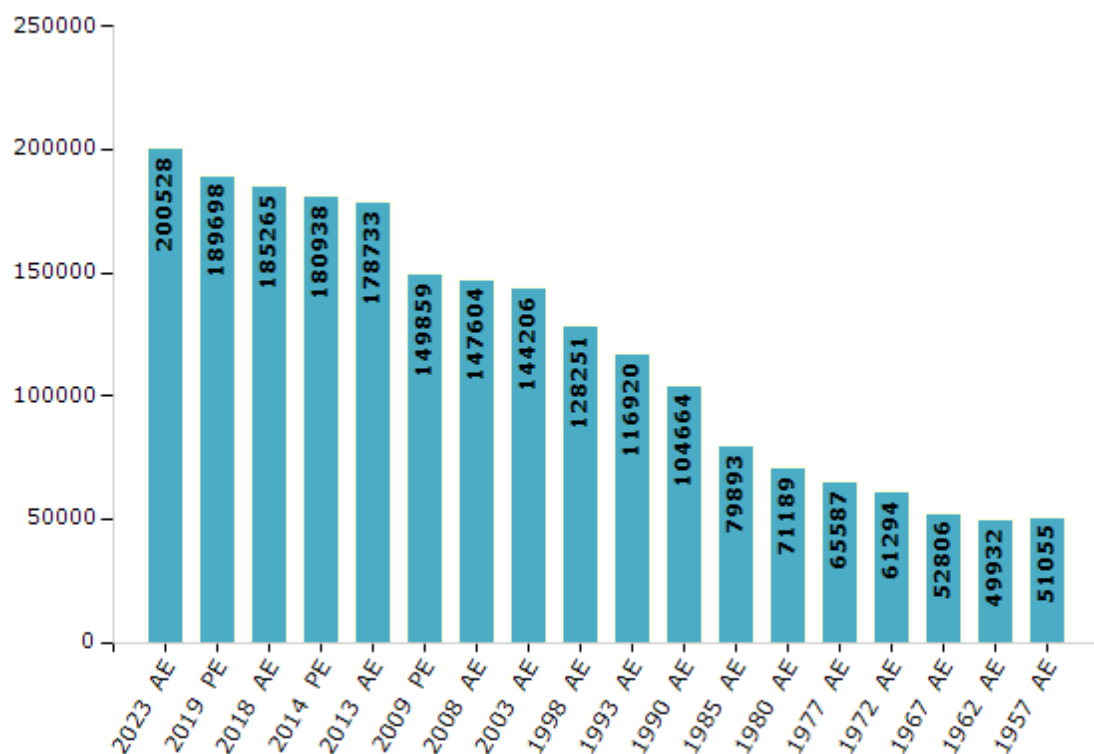
Electoral Features

Electors by Male & Female

Year	Male	Female	Others	Total
2023 AE	100157	100370	1	200528
2019 PE	95241	94456	1	189698
2018 AE	93352	91912	1	185265
2014 PE	91436	89496	6	180938
2013 AE	90494	88230	9	178733
2009 PE	76026	73833	-	149859
2008 AE	74906	72698	-	147604
2004 PE	-	-	-	-
2003 AE	72871	71335	-	144206
1999 PE	-	-	-	-
1998 AE	64036	64215	-	128251

Year	Male	Female	Others	Total
1993 AE	58969	57951	-	116920
1990 AE	52739	51925	-	104664
1985 AE	39679	40214	-	79893
1980 AE	35213	35976	-	71189
1977 AE	32343	33244	-	65587
1972 AE	30439	30855	-	61294
1967 AE	-	-	-	52806
1962 AE	-	-	-	49932
1957 AE	-	-	-	51055
1952 AE	-	-	-	-

Number of Electors

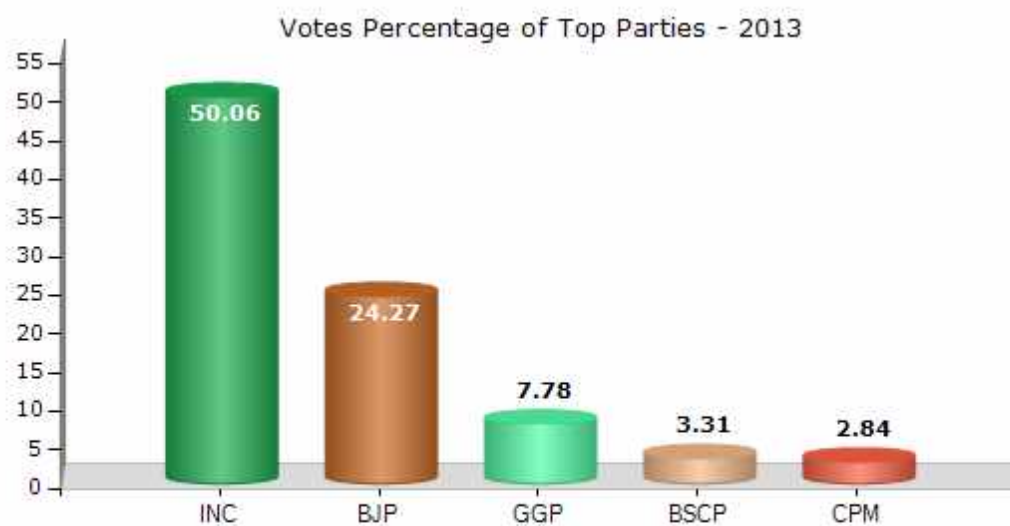


Note : AE : Assembly Election, PE : Assembly Segment of Parliamentary Election

Historical Summary Election Results

Summary Result of Assembly Election - 2013

Candidate Name	Party	Votes	Votes %
Phundelal Singh Marko	INC	69192	50.06
Sudama Singh Singram	BJP	33545	24.27
Lalan Singh Paraste	GGP	10759	7.78
Ramkripal	BSCP	4575	3.31
Jhamaklal Kol	CPM	3924	2.84
Ram Shingh Armo	SP	2635	1.91
Sudheer Kumar Kapardi	BSP	2501	1.81
Sampat Singh Dhurve	IND	2025	1.47
Hublal Tandiya	NCP	1434	1.04
Rambali Singh	IND	1248	0.9
Bhanwar Singh	IND	1037	0.75
	NOTA	5349	3.87



Polling Station Level Election Results

Number and Name of Polling Stations (PS) (2018)

Number of Polling Stations	Name of Polling Stations	Number of Polling Stations	Name of Polling Stations
1	Sha. Pra.Sha.Bhawana Baditummi	22	Sha. Ju.Ha.School Bh.Khamaroudh
2	S P S Bhawan Cheer Pani	23	S P Shala Bhawan Payari
3	S P S Bhawan Bijora Khurd	24	S. Ma.. Shala. Bhawan Sarai
4	Sha.Pra.Shala.Bhawan.Kharasol	25	Sha. Pra.Sha.Bhawan Tarang
5	Sha. Pra.Sala Bhawan Parmaniya	26	S P S Bhawan Katur Dona
6	S P Shala Bhawan Gijari	27	Sha. Pra.Sha.Bhawan Suadand
7	S P S Bhawan Baghdad	28	Sha. Ju.Ha.School Bh., Jaraha
8	S P Shala Bhawan Sarfa	29	Sha. Pra.Sha.Bhawan Majholi
9	S P Shala Bhawan Silwari	30	Sha. Pra.Sha.Bhawan Gediama
10	Sha. Pra.Sha.Bhawan Dhuradhar	31	Sha. Pra.Sha.Bhawan Dhavai
11	S P Shala Bhawan Thunguni	32	Sha. Ju.High School Bh. Ka Purvi Bhag Amadari
12	Panchayat Bhawan Mitthumahua	33	Sha.Pra.Sha. Bhawan Shyamaduari
13	Sha. Pra.Sha.Bhawan Kodar	34	Sha. Pra.Sha.Bhawan Nagamla
14	S P S Bhawan Rmana Sarkari	35	Sha. Pra.Sha.Bhawan Karanpathar
15	Rajeev Gandhi P Shala Bhawan Kumhani	36	Sha.Pra.Sha.Bhawan Bijapuri
16	S P Shala Bhawan Dogariya	37	Sha.Pra.Sha.Bhawan Jarahi
17	S K P Shala Bhawan Jaithari	38	S P Shala Bhawan Alhawar
18	Sha. Pra.Sha.Bhawan Shital Pani	39	Pra. Sala Bhawan Adhwar Ghatha
19	Sha. Pra.Sha.Bhawan Ahiragavan	40	Sha. Pra.Sha.Bhawan Lamasarai
20	S P Shala Bhawan Tarera	41	Karaundi Pra. Shala Karaundi Lamasarai
21	Sha. Pra.Sha.Bhawan Chatua	42	Sha.Pra.Sha.Bhawan Gonga Kaksh No.1

Contd....

Polling Station Level Election Results

Polling Station-wise Votes Secured by Overall Top Five Parties in Pushprajgarh Assembly in Assembly Election (AE) under Shahdol Parliamentary Constituency in Madhya Pradesh (2018)

Number of Polling Station	Winner - Phundelal Singh Marko (INC)	Runner-up - Narendra Singh Maravi (BJP)	3rd - Anil Singh Dhurwey (GGP)	4th - Sudama Singh Singram (IND)	5th - Amit Padawar (Adhivakta) (BSCP)	NOTA	Other	Total Votes Secured
36	59	266	25	7	3	7	33	400
37	174	315	150	7	26	22	49	743
38	208	201	81	48	3	18	50	609
39	103	151	113	13	3	15	38	436
40	267	168	41	21	7	19	45	568
41	100	58	160	10	4	21	27	380
42	210	195	64	13	44	21	40	587
43	76	219	7	9	8	10	25	354
44	98	362	36	17	4	40	63	620
45	376	91	80	2	20	28	45	642
46	142	78	28	3	5	10	18	284
47	246	374	61	20	5	50	86	842
48	114	64	408	23	35	23	76	743
49	165	89	212	3	1	18	39	527
50	150	26	245	16	8	12	58	515
51	209	120	356	6	78	23	62	854
52	214	90	61	14	69	14	37	499
53	105	42	194	14	14	11	39	419
54	217	200	14	27	80	18	57	613
55	143	123	37	8	22	9	22	364
56	285	198	11	17	3	43	49	606
57	110	138	46	2	3	11	25	335
58	107	84	7	5	1	6	12	222
59	319	173	81	12	4	19	32	640
60	96	146	13	2	16	4	15	292
61	70	176	212	6	29	7	23	523
62	233	248	10	7	15	17	52	582
63	170	123	19	18	15	5	24	374
64	389	106	91	9	14	26	52	687
65	338	83	177	21	13	26	94	752
66	274	38	173	11	3	21	47	567
67	483	127	19	45	15	12	45	746
68	360	235	11	9	7	27	82	731
69	259	85	172	60	12	27	77	692
70	374	32	72	11	4	14	40	547

Contd....

Polling Station Level Election Results

Winner, Runner-up and 3rd Party Position & Winning Margin According to Polling Stations in Pushprajgarh Assembly in Assembly Election (AE) under Shahdol Parliamentary Constituency in Madhya Pradesh (2018)

Polling Station Number	Winner Party	Winner Votes (%)	Runner-up Party	Runner-up Votes (%)	Winning Margin Votes (%)	Third Party	Third Party Votes (%)	Other Votes (%)
67	INC	483 (64.75)	BJP	127 (17.02)	356 (47.73)	IND (SSS)	45 (6.03)	91 (12.2)
68	INC	360 (49.25)	BJP	235 (32.15)	125 (17.1)	CPM	24 (3.28)	112 (15.32)
69	INC	259 (37.43)	GGP	172 (24.86)	87 (12.57)	BJP	85 (12.28)	176 (25.43)
70	INC	374 (68.37)	GGP	72 (13.16)	302 (55.21)	BJP	32 (5.85)	69 (12.61)
71	INC	410 (47.9)	GGP	175 (20.44)	235 (27.46)	BJP	144 (16.82)	127 (14.84)
72	INC	308 (49.04)	BJP	118 (18.79)	190 (30.25)	GGP	96 (15.29)	106 (16.88)
73	GGP	163 (31.23)	INC	151 (28.93)	12 (2.3)	BJP	115 (22.03)	93 (17.82)
74	INC	247 (80.19)	BJP	30 (9.74)	217 (70.45)	GGP	13 (4.22)	18 (5.84)
75	INC	323 (78.97)	BJP	17 (4.16)	306 (74.81)	IND (SSS)	17 (4.16)	52 (12.71)
76	GGP	191 (41.7)	INC	178 (38.86)	13 (2.84)	BJP	35 (7.64)	54 (11.79)
77	INC	278 (39.71)	GGP	243 (34.71)	35 (5)	BJP	63 (9)	116 (16.57)
78	INC	250 (47.53)	BJP	107 (20.34)	143 (27.19)	GGP	55 (10.46)	114 (21.67)
79	BJP	181 (36.2)	GGP	123 (24.6)	58 (11.6)	INC	122 (24.4)	74 (14.8)
80	INC	131 (55.27)	BJP	61 (25.74)	70 (29.53)	GGP	13 (5.49)	32 (13.5)
81	INC	391 (53.71)	GGP	164 (22.53)	227 (31.18)	BJP	74 (10.16)	99 (13.6)
82	INC	230 (75.16)	BJP	35 (11.44)	195 (63.72)	GGP	19 (6.21)	22 (7.19)
83	INC	390 (66.67)	GGP	69 (11.79)	321 (54.88)	BJP	54 (9.23)	72 (12.31)
84	INC	236 (51.53)	GGP	128 (27.95)	108 (23.58)	BJP	36 (7.86)	58 (12.66)
85	GGP	159 (50)	INC	89 (27.99)	70 (22.01)	BJP	36 (11.32)	34 (10.69)
86	INC	416 (62)	BJP	106 (15.8)	310 (46.2)	GGP	48 (7.15)	101 (15.05)
87	INC	195 (60.37)	BJP	70 (21.67)	125 (38.7)	GGP	18 (5.57)	40 (12.38)
88	INC	189 (52.79)	GGP	81 (22.63)	108 (30.16)	BJP	56 (15.64)	32 (8.94)
89	INC	437 (63.15)	BJP	86 (12.43)	351 (50.72)	GGP	53 (7.66)	116 (16.76)
90	GGP	358 (43.71)	INC	296 (36.14)	62 (7.57)	BJP	43 (5.25)	122 (14.9)
91	INC	269 (77.52)	GGP	29 (8.36)	240 (69.16)	BJP	22 (6.34)	27 (7.78)
92	GGP	254 (34.56)	BJP	227 (30.88)	27 (3.68)	INC	149 (20.27)	105 (14.29)
93	INC	97 (46.63)	GGP	58 (27.88)	39 (18.75)	BJP	30 (14.42)	23 (11.06)
94	INC	181 (45.71)	GGP	149 (37.63)	32 (8.08)	BJP	27 (6.82)	39 (9.85)
95	INC	274 (63.87)	BJP	50 (11.66)	224 (52.21)	GGP	27 (6.29)	78 (18.18)
96	INC	188 (38.13)	BJP	173 (35.09)	15 (3.04)	GGP	49 (9.94)	83 (16.84)
97	GGP	285 (52.01)	INC	92 (16.79)	193 (35.22)	BSCP	62 (11.31)	109 (19.89)
98	GGP	123 (33.42)	INC	118 (32.07)	5 (1.35)	BJP	32 (8.7)	95 (25.82)
99	INC	263 (31.92)	BJP	151 (18.33)	112 (13.59)	GGP	131 (15.9)	279 (33.86)

Contd....

Socio-Economic Amenities - Rural

Access to Education Facilities

Particulars	Number of Village (% of Population)				
	Available	Not Available	If Not Available (Distance of Nearest Facility)		
			A	B	C
Govt. Primary School	304 (100)	6 (0)	3 (0)	1 (0)	1 (0)
Private Primary School	9 (4)	301 (96)	0 (0)	0 (0)	0 (0)
Govt. Middle School	126 (57)	184 (43)	114 (27)	43 (8)	4 (1)
Private Middle School	6 (2)	304 (98)	0 (0)	0 (0)	0 (0)
Govt. Secondary School	25 (16)	285 (84)	94 (29)	136 (41)	38 (9)
Private Secondary School	3 (2)	307 (98)	3 (1)	0 (0)	0 (0)
Govt. Senior Secondary School	13 (10)	297 (90)	44 (15)	124 (38)	116 (33)
Private Senior Secondary School	0 (0)	310 (100)	0 (0)	0 (0)	1 (0)
Govt. Arts and Science Degree College	0 (0)	310 (100)	2 (0)	5 (2)	202 (64)
Private Arts and Science Degree College	0 (0)	310 (100)	0 (0)	0 (0)	0 (0)
Govt. Engineering College	0 (0)	310 (100)	1 (0)	0 (0)	228 (75)
Private Engineering College	0 (0)	310 (100)	0 (0)	0 (0)	0 (0)
Govt. Medicine College	0 (0)	310 (100)	0 (0)	0 (0)	234 (77)
Private Medicine College	0 (0)	310 (100)	0 (0)	0 (0)	0 (0)
Govt. Management Institute	0 (0)	310 (100)	1 (0)	0 (0)	7 (3)
Private Management Institute	0 (0)	310 (100)	0 (0)	0 (0)	0 (0)
Govt. Polytechnic	0 (0)	310 (100)	0 (0)	0 (0)	310 (100)
Private Polytechnic	0 (0)	310 (100)	0 (0)	0 (0)	0 (0)
Govt. Vocational Training School/ITI	0 (0)	310 (100)	1 (0)	10 (4)	298 (96)
Private Vocational Training School/ITI	0 (0)	310 (100)	0 (0)	0 (0)	0 (0)
Govt. Non Formal Training Centre	0 (0)	310 (100)	1 (0)	1 (0)	235 (78)
Private Non Formal Training Centre	0 (0)	310 (100)	0 (0)	1 (1)	69 (20)
Govt. School For Disabled	0 (0)	310 (100)	0 (0)	0 (0)	182 (60)
Private School For Disabled	0 (0)	310 (100)	0 (0)	0 (0)	18 (5)
Government Others	0 (0)	310 (100)	0 (0)	0 (0)	4 (1)
Private Others	1 (0)	309 (100)	1 (0)	0 (0)	1 (1)

Note : Distance A : Less than 5 km; B : Between 5-10 km; C : 10+ km.; Source : Data Analysis is based on 2011 Census.

DISCLAIMER

The Terms of Use and Disclaimer of Datanet India Private Limited (hereinafter referred to as "Datanet") for use of this analysis report of **Pushprajgarh Assembly Constituency (Pushprajgarh Vidhan Sabha)** :-

1. **Assembly Factbook™** is a Registered Trade Mark owned by Datanet.
2. All the maps are sketched and graphical representation only and have not been drawn to the scale and also not to represent the actual geographical area or boundary of the unit.
3. The data for the aforesaid analysis is based on authentic sources and has been culled from the various publications of Census, CSO and NSSO for district and block level data, various central and state government departments, Central & State Elections Commissions and the concerned Returning Officers' releases, Electoral Rolls, Election results and allied publications, internal assessment, surveys, estimates and analysis. Therefore, certain adjustment of data at micro level may have been done to arrive closer to the macro data.
4. Data have been provided on an "As Is" and "As AVAILABLE" basis
5. The colours shown in the maps or diagram and charts of a particular party, alliance or AC are indicative and do not represent them.
6. This publication which includes maps, sheets, graphs and data would be the property under copyright of Datanet only. The user may use these for its internal study, analysis and research purposes. It's public display, re-selling or any commercial uses by the user are not allowed.
7. Datanet has taken due care and caution in compilation and processing of data and allied information, but does not guarantee the accuracy, adequacy or completeness of any information/analysis and will be not responsible for any errors or omissions or for the results obtained from the use of such information/analysis.
8. All the contents for the publication have been culled from various authentic sources and Datanet reasonably believes such sources to be reliable, but does not make any representations, express or implied as to the accuracy or fitness of use of such information. The information or contents of the information/analysis do not constitute advice and should not be relied upon in making (or refraining from making) any decision. Any reliance placed upon the information provided by Datanet is the sole responsibility and strictly at the user's risk.
9. In no event will Datanet be liable for any damages (including, without limitation, damages for loss of business projects, or loss of profits) arising in contract, tort or otherwise from the use of or inability to use any of its contents, or from any action taken (or refrained from being taken) as a result of using the analysis or any of its contents. Datanet its directors, owners, editors, officials, employees, distributor and agents or any associate will not be liable for any errors in the information contained or any consequences arising from the use of the contents of the provided information/analysis.
10. If any provision of these terms and conditions is held invalid or illegal or unenforceable for any reason by any court of competent jurisdiction, such provision shall be severed and the remainder of provisions of the terms and conditions shall continue in full force and effect as if the Term of Use had been executed with the invalid, illegal or unenforceable provision eliminated.
11. If there are any discrepancies in the information provided, please bring it to attention of Datanet for suitable rectification measures.

Buy Online This Complete Book At
Datanet India eBooks Store

www.indiastatpublications.com

or go directly at

[http://www.indiastatpublications.com/
Assembly_factbook/Madhya_Pradesh/Shahdol/ Pushprajgarh](http://www.indiastatpublications.com/Assembly_factbook/Madhya_Pradesh/Shahdol/ Pushprajgarh)

 **indiastat**elections

ISBN : 978-93-6219-058-1



9 789362 190581