



Maharashtra

Assembly Factbook™

Badnera Assembly Constituency



Key Electoral Data of Badnera
Assembly Constituency (Vidhan Sabha)

Maharashtra
Assembly FactbookTM
Badnera Assembly Constituency



Badnera Vidhan Sabha

Editor & Director

Dr. R.K. Thukral

Research Editor

Dr. Shafeeq Rahman

Compiled, Researched and Published by Datanet India Pvt. Ltd.

D-100, 1st Floor,

Okhla Industrial Area, Phase-I,
New Delhi- 110020.

Ph.: 91-11- 43580781-84

Email : support@indiastatpublications.com

Website : www.indiastatelections.com

Online Book Store :

www.indiastatpublications.com

Report No. : AFB/MH-037-0125

ISBN : 978-93-5293-172-9

First Edition : January, 2018

Eighth Updated Edition : January, 2025

Price : Rs. 11500/-

US\$ 310

© Datanet India Pvt. Ltd.

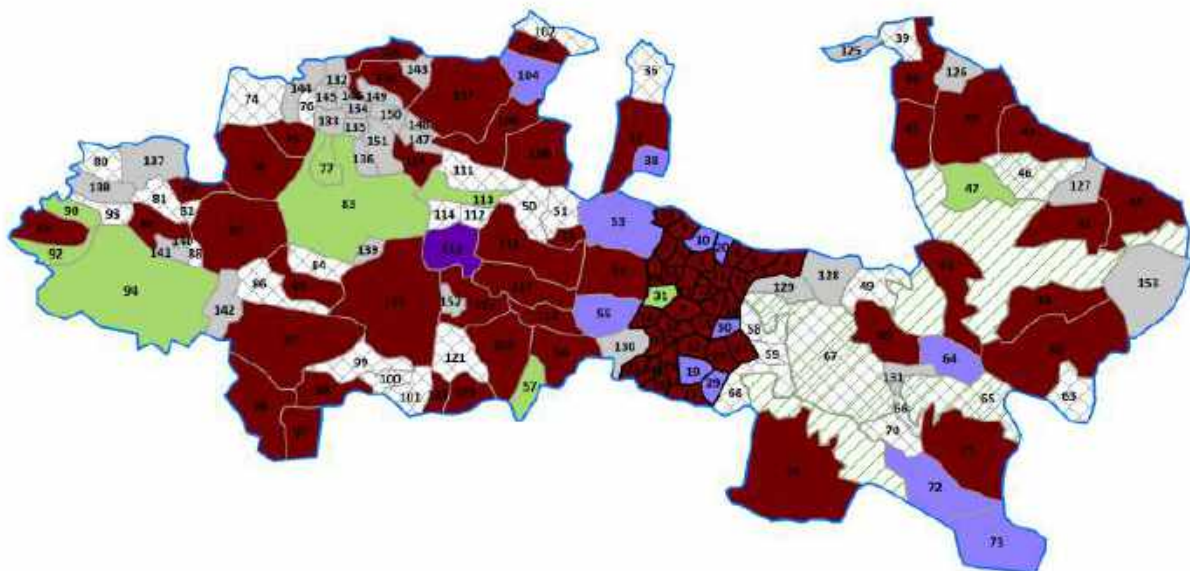
All rights reserved. No part of this book may be reproduced, stored in a retrieval system or transmitted in any form or by any means, mechanical photocopying, photographing, scanning, recording or otherwise without the prior written permission of the publisher. Please refer to Disclaimer at page no. 243 for the use of this publication.

Printed in India

No.	Particulars	Page No.
	Introduction	
1	Assembly Constituency - (Vidhan Sabha) at a Glance Features of Assembly as per Delimitation Commission of India (2008)	1-2
	Location and Political Maps	
2	Location Map Boundaries of Assembly Constituency - (Vidhan Sabha) in District Boundaries of Assembly Constituency under Parliamentary Constituency - (Lok Sabha) Locality & Village-wise Winner Parties- 2024-PE, 2024-AE, 2019-PE, 2019-AE, 2014-PE, 2014-AE, 2009-PE and 2009-AE	3-10
	Administrative Setup (2011)	
3	District Sub-district Towns Villages Inhabited Villages Uninhabited Villages Village Panchayat Intermediate Panchayat	11-18
	Demographics (2011)	
4	Population Households Rural/Urban Population Villages by Population Size Sex Ratio (Total & 0-6 Years) Religious Population Social Population Literacy Rate	19-20
	Electoral Features	
5	Important Dates of Last Elections Held Electors by Gender Service Electors Voters Voters Turnout Polling Stations & Average Number of Electors per Polling Station Electors by Age Group Present Elected Representatives	21-26
	Historical Summary Election Results	
6	Vote Share of Major Parties Winning Margin (Number & Percentage Polarity of Parties Summary Result of Assembly Segment of Parliamentary Elections 2024, 2019, 2014, 2009, 2004 and 1999 Summary Result of Assembly Elections 2024, 2019, 2014, 2009, 2004, 1999, 1995, 1990, 1985, 1980, 1978, 1972, 1967 and 1962	27-51
	Polling Station Level Election Results	
7	Name and Number of Polling Station 2024-PE, 2024-AE, 2019-PE, 2019-AE, 2014-PE, 2014-AE, 2009-PE and 2009-AE Polling Station-wise Electors, Voters & Voters Turnout 2024-PE, 2024-AE, 2019-PE, 2019-AE, 2014-PE, 2014-AE, 2009-PE and 2009-AE Polling Station wise Elections Results 2024-PE, 2024-AE, 2019-PE, 2019-AE, 2014-PE, 2014-AE, 2009-PE and 2009-AE	52-221
	Share of Assembly Constituency	
8	Share of Assembly Constituency - (Vidhan Sabha) in State, District and Parliamentary Constituency - (Lok Sabha)	222
	Socio-Economic Amenities (2011)	
9	Access to Administrative Units Agricultural, Manufacturing and Industrial Commodities Demographic Indicators Education Health & Manpower Drinking Water Supply Sanitation Entertainment and Recreations Infrastructure Power Food Allocation Distribution and Marketing of Agriculture Commodities Infrastructure Transport and Road Infrastructure Communication Banking and Financial Services Land Use Irrigation Source	224-238
10	Abbreviation & Sources	240-241
11	Disclaimer	243

Location & Political Map

Locality & Village-wise Winner Parties in Badnera Assembly Segment under Amravati (SC) Parliamentary Election (PE) (No. 37) - 2014



BSP	NCP	RPI	SHS	UV	UN	Total AC	Locality (L)	Village (V)
(5L+7V)	(1L+8V)	(1V)	(29L+42V)	(31V)	(29V)		35L	118V
UV : Unspecified Village UN : Uninhabited Village								

Note : Locality boundaries are shown for visual presentations only and these are not showing the actual geographical locations.

Administrative Setup

List of Village Panchayat & Intermediate Panchayat (Block) Name (2011)

Village Name	Village Panchayat Name	Intermediate Panchayat Name
Alangaon	Alangaon	Bhatkuli
Aliyabad	-	Amravati
Amdapur	Bhankheda Bk.	Amravati
Anjangaon bari	Anjangaon Bari	Amravati
Antapur	Khalkhoni	Bhatkuli
Arhad	Udkhed	Amravati
Asara	Asara	Bhatkuli
Bahaddarpur	Bahaddarpur	Bhatkuli
Bahilolpur	Katamala	Amravati
Bhankheda Bk.	Bhankheda Bk.	Amravati
Bhankheda Kh.	Bhankheda Kh.	Amravati
Bhatkuli	Bhatkuli	Bhatkuli
Bodna	Bodna	Amravati
Borgaon	Borgaon	Amravati
Borgaon	Parlam	Bhatkuli
Borkhadi Bk	Borkhadi Kh	Bhatkuli
Chakur	-	Bhatkuli
Chanduri	Pimpri	Amravati
Changapur	Kund Sarjapur	Amravati
Checharwadi	Kumagad	Bhatkuli
Dadhi	Dadhi	Bhatkuli
Dahatonda	Sayat	Bhatkuli
Dautpur	Kanfodi	Bhatkuli
Degurkheda	Hartala	Bhatkuli
Ganojadevi	Ganojadevi	Bhatkuli
Ganori	Ganori	Bhatkuli
Ghat kheda	Indhala	Amravati
Ghatkheda	Jasapur	Bhatkuli
Gopgavhan	Gourkheda	Bhatkuli

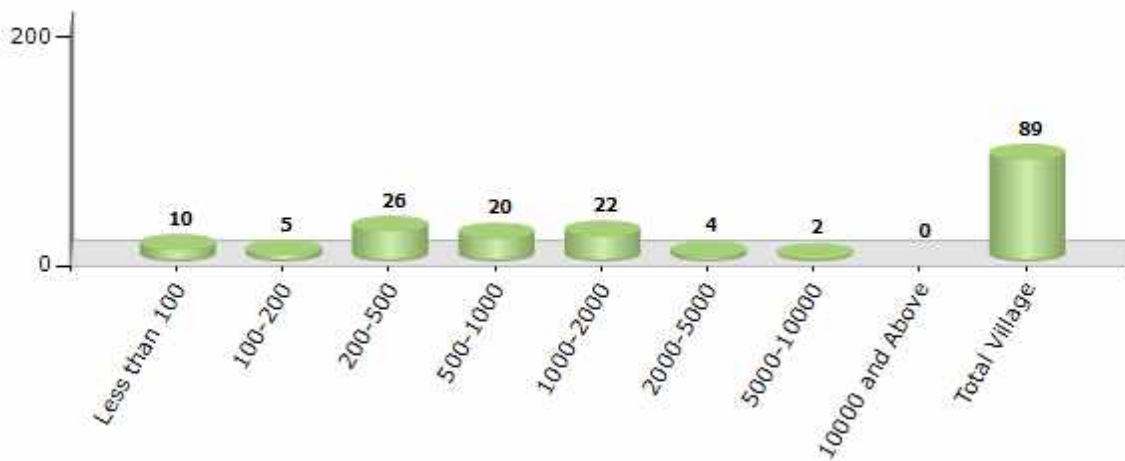
Contd....

Demographics

Number of Villages by Population Size - 2011

Less than 100	100-200	200-500	500-1000	1000-2000	2000-5000	5000-10000	10000 and Above	Total Village
10	5	26	20	22	4	2	0	89

Number of Villages by Population Size - 2011

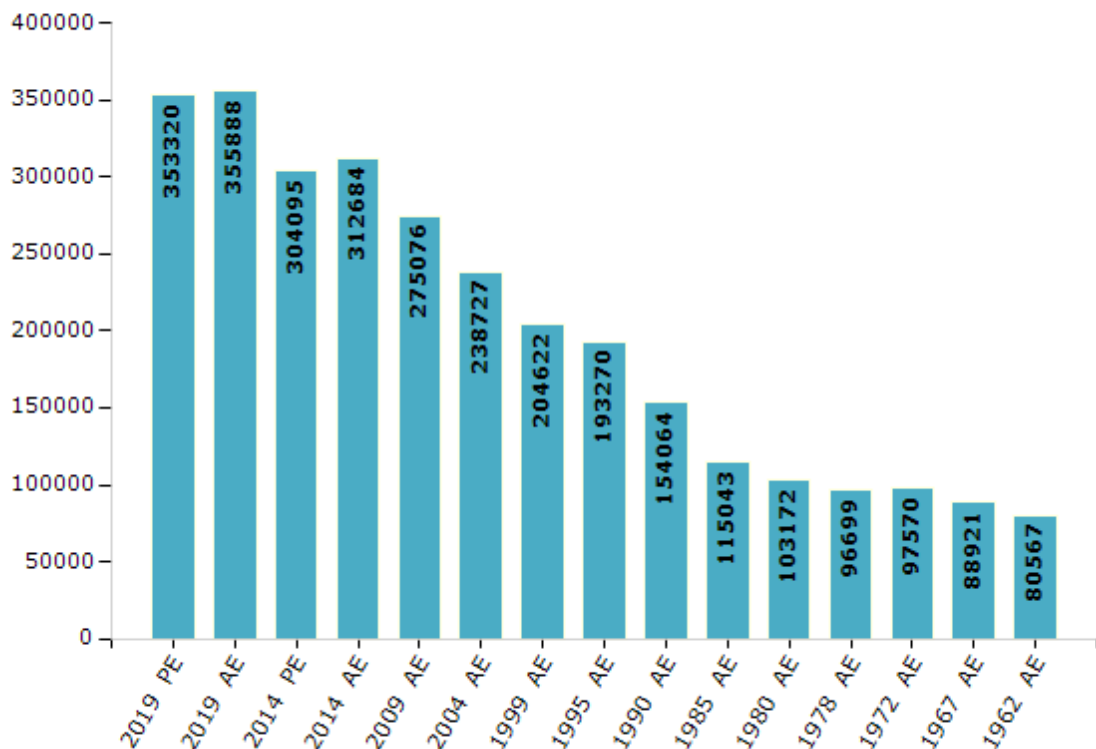


Electoral Features

Electors by Male & Female

Year	Male	Female	Others	Total	Year	Male	Female	Others	Total
2019 PE	180137	173169	14	353320	1999 AE	109463	95159	-	204622
2019 AE	181332	174542	14	355888	1995 AE	101846	91424	-	193270
2014 PE	157993	146102	0	304095	1990 AE	82044	72020	-	154064
2014 AE	161917	150767	0	312684	1985 AE	60698	54345	-	115043
2009 PE	-	-	-	-	1980 AE	53750	49422	-	103172
2009 AE	143020	132056	-	275076	1978 AE	50045	46654	-	96699
2004 PE	-	-	-	-	1972 AE	50126	47444	-	97570
2004 AE	125284	113443	-	238727	1967 AE	-	-	-	88921
1999 PE	-	-	-	-	1962 AE	-	-	-	80567

Number of Electors



Note : AE : Assembly Election, PE : Assembly Segment of Parliamentary Election

Historical Summary Election Results

Summary Result of Assembly Election - 2014

Candidate Name	Party	Votes	Votes %
Ravi Rana	IND	46827	26.1
Band Sanjay Raosaheb	SHS	39408	21.97
Sulbha Sanjay Khodke	INC	33897	18.89
Bhartiya Tushar Panditrao	BJP	31455	17.53
Ravi Bhauraoji Vaidhya	BSP	12663	7.06
Adatiya Vinesh Jayantial	IND	9786	5.45
Adv. Vanita Jayaramji Sodagre	IND	699	0.39
Mahajan Sanjay Deorao	IND	609	0.34
Lonare Tarachand Tukaramji	RP(K)	511	0.28
Ruprao Onkar Mohod	ARP	504	0.28
Rahulbhau Laxmanrao Mohod	IND	445	0.25
Adv.Sudhir Hiranmanji Tayade	IND	353	0.2
Sukhadeo Babu Mesharam	APoI	325	0.18
Ingole Sachin Keshao	IND	247	0.14
Deshmukh Jaydip Rajendra	IND	152	0.08
	NOTA	1522	0.85

Polling Station Level Election Results

Number and Name of Polling Stations (PS) (2019 AE)

Number of Polling Stations	Name of Polling Stations	Number of Polling Stations	Name of Polling Stations
1	Jilha Parishad East Madhyamik Shala Kumagadkholi Kr. 1	22	Jilha Parishad East Madhyamik Shala Kholi Kr. 1Vadaganv Mahore
2	Jilha Parishad Prathamik Shala Checharavadi	23	Jilha Parishad East Madhyamik Shala Kholi Kr. 2Vadaganv Mahore
3	Jilha Parishad Prathamik Shala Kunda Khurda Kholi	24	Jilha Parishad Prathamik Shala Rasulapur
4	Jilha Parishad Prathamik Marathi Shala Savarakheda Kholi. Kr. 3	25	Jilha Parishad East Madhyamik Shala Kholi Kramank 1 Nimbha.
5	Jilha Parishad East Madhyamik Shala Kholi Kr. 1 Boraganv Dharmale.	26	Jilha Parishad East Madhyamik Shala Kholi Kramank 2 Nimbha
6	Jilha Parishad East Madhyamik Shala Kholi Kr. 2 Boraganv Dharmale.	27	Jilha Parishad East Madhyamik Urdu Shala Kholi Kr. 1Bhatkuli
7	Jilha Parishad East Madhyamik Shala Kholi Kr. 1 Alanaganv	28	Zilha Parishad Pre Secondary Urdu School Bhatkuli Room No. 03
8	Jilha Parishad East Madhyamik Shala Kholi Kr. 2 Alanaganv	29	Jilha Parishad East Madhyamik Urdu Shala Kholi Kr. 2Bhatkuli
9	Jilha Parishad Prathamik Marathi Shala Kholi Kr. 1	30	Jilha Parishad East Madhyamik Mulinchi Shala Kholi Kr. 1 Bhatkuli.
10	Jilha Parishad Prathamik Marathi Shala Kholi Kr. 1	31	Jilha Parishad East Madhyamik Mulinchi Shala Kholi Kr. 2 Bhatkuli.
11	Jilha Parishad Prathamik Shala Jasapur	32	Jilha Parishad Prathamik Mulanchi Shala Kholi Kr. 1 Bhatkuli.
12	Jilha Parishad East Madhyamik Shala Kholi Kr. 1 Khalakhoni	33	Jilha Parishad Prathamik Mulanchi Shala Kholi Kr. 2 Bhatkuli.
13	Jilha Parishad East Madhyamik Shala Kholi Kr. 2 Kh	34	Jilha Parishad East Madhyamik Shala Kholi Kr. 1Say
14	Jilha Parishad Prathamika Shala Room No.1Hartala	35	Jilha Parishad East Madhyamik Shala Kholi Kramank 4Sayat
15	Jilha Parishad Prathamika Shala Kolatek	36	Jilha Parishad East Madhyamik Shala Nanded Kurd
16	Jilha Parishad Prathamik Shala Vasevadi	37	Jilha Parishad Prathamik Shala Runamochan
17	Jilha Parishad Prathamik Shala Gopagavhan Kholi Kr	38	Jilha Parishad East Madhyamik Shala Kholi Kr. 1Asa
18	Jilha Parishad East Madhyamik Shala Kholi Kramank 1 Haterna	39	Zilha Parishad Pre Secondary School Asara Room No
19	Jilha Parishad East Madhyamik Shala Kholi Kramank 2 Haterna	40	Jilha Parishad East Madhyamik Shala Kholi Kr 2 Asa
20	Jilha Parishad Prathamik Shala Kholi Kr. 1 Sukali	41	Jilha Parishad East Madhyamik Shala Kholi Kr 5 Asa
21	Jilha Parishad Prathamik Shala Kholi Kr. 2Sukali	42	Jilha Parishad Prathamik Shala Kholi Kr. 1Ganoja D

Contd....

Polling Station Level Election Results

Polling Station-wise Votes Secured by Overall Top Five Parties in Badnera Assembly in Assembly Election (AE) under Amravati Parliamentary Constituency in Maharashtra (2019)

Number of Polling Station	Winner - Ravi Rana (IND)	Runner-up - Band Priti Sanjay (SHS)	3rd - Pramod Yashwantrao Ingale (VBA)	4th - Sheela Santosh Meshram (IND)	5th - Adv. Vilas Devidas Gawande (BSP)	NOTA	Other	Total Votes Secured
36	136	131	1	4	0	1	9	282
37	270	41	8	6	1	0	11	337
38	175	198	3	10	1	1	19	407
39	109	147	5	5	0	0	9	275
40	353	147	37	12	2	3	24	578
41	228	262	83	11	3	1	22	610
42	249	193	3	10	1	2	13	471
43	235	120	10	8	0	2	10	385
44	291	109	23	8	0	0	22	453
45	328	275	84	17	3	2	19	728
46	177	171	118	6	1	1	14	488
47	122	100	112	8	4	1	9	356
48	91	256	64	15	1	1	15	443
49	185	310	58	29	1	2	45	630
50	130	155	28	28	2	0	18	361
51	195	87	194	12	1	2	18	509
52	257	24	9	36	3	2	29	360
53	188	110	4	27	5	3	21	358
54	437	212	1	33	2	2	17	704
55	370	216	7	21	2	4	20	640
56	237	131	9	20	0	1	12	410
57	373	392	4	20	2	1	16	808
58	393	223	29	39	3	3	29	719
59	359	262	8	19	3	1	21	673
60	387	166	1	27	3	4	23	611
61	380	232	9	24	3	1	22	671
62	409	190	2	17	9	0	19	646
63	292	195	3	19	2	1	8	520
64	238	343	6	16	0	7	8	618
65	247	322	2	9	1	7	4	592
66	270	390	6	2	0	6	17	691
67	244	331	5	12	1	1	6	600
68	244	417	2	5	3	4	10	685
69	207	166	1	9	0	0	11	394
70	180	367	0	3	2	14	3	569

Contd....

Polling Station Level Election Results

Winner, Runner-up and 3rd Party Position & Winning Margin According to Polling Stations in Badnera Assembly in Assembly Election (AE) under Amravati Parliamentary Constituency in Maharashtra (2019)

Polling Station Number	Winner Party	Winner Votes (%)	Runner-up Party	Runner-up Votes (%)	Winning Margin Votes (%)	Third Party	Third Party Votes (%)	Other Votes (%)
71	IND (RR)	399 (58.76)	SHS	92 (13.55)	307 (45.21)	VBA	82 (12.08)	106 (15.61)
72	IND (RR)	340 (61.04)	SHS	132 (23.7)	208 (37.34)	BSP	23 (4.13)	62 (11.13)
73	IND (RR)	277 (54.53)	SHS	188 (37.01)	89 (17.52)	IND (SSM)	12 (2.36)	31 (6.1)
74	IND (RR)	273 (48.75)	SHS	237 (42.32)	36 (6.43)	IND (SSM)	16 (2.86)	34 (6.07)
75	IND (RR)	260 (48.51)	SHS	210 (39.18)	50 (9.33)	IND (SSM)	33 (6.16)	33 (6.16)
76	IND (RR)	363 (64.48)	SHS	151 (26.82)	212 (37.66)	IND (SSM)	22 (3.91)	27 (4.8)
77	SHS	216 (59.34)	IND (RR)	131 (35.99)	85 (23.35)	VBA	1 (0.27)	16 (4.4)
78	SHS	203 (52.73)	IND (RR)	155 (40.26)	48 (12.47)	IND (SSM)	5 (1.3)	22 (5.71)
79	SHS	405 (65.22)	IND (RR)	198 (31.88)	207 (33.34)	IND (SSM)	6 (0.97)	12 (1.93)
80	SHS	403 (56.52)	IND (RR)	278 (38.99)	125 (17.53)	IND (SSM)	12 (1.68)	20 (2.81)
81	SHS	204 (62.58)	IND (RR)	105 (32.21)	99 (30.37)	IND (SSM)	6 (1.84)	11 (3.37)
82	SHS	341 (56.27)	IND (RR)	248 (40.92)	93 (15.35)	IND (SSM)	5 (0.83)	12 (1.98)
83	SHS	340 (59.34)	IND (RR)	221 (38.57)	119 (20.77)	VBA	2 (0.35)	10 (1.75)
84	SHS	332 (52.2)	IND (RR)	290 (45.6)	42 (6.6)	IND (SSM)	4 (0.63)	10 (1.57)
85	SHS	340 (57.72)	IND (RR)	224 (38.03)	116 (19.69)	IND (SSM)	7 (1.19)	18 (3.06)
86	SHS	376 (54.34)	IND (RR)	300 (43.35)	76 (10.99)	IND (SSAH)	3 (0.43)	13 (1.88)
87	SHS	273 (49.1)	IND (RR)	254 (45.68)	19 (3.42)	IND (SSM)	11 (1.98)	18 (3.24)
88	SHS	274 (65.39)	IND (RR)	129 (30.79)	145 (34.6)	BSP	2 (0.48)	14 (3.34)
89	SHS	354 (70.66)	IND (RR)	129 (25.75)	225 (44.91)	VBA	5 (1)	13 (2.59)
90	SHS	286 (60.98)	IND (RR)	159 (33.9)	127 (27.08)	IND (SSM)	3 (0.64)	21 (4.48)
91	SHS	370 (55.64)	IND (RR)	250 (37.59)	120 (18.05)	IND (SSM)	8 (1.2)	37 (5.56)
92	SHS	183 (45.19)	IND (RR)	181 (44.69)	2 (0.5)	IND (SSM)	19 (4.69)	22 (5.43)
93	SHS	234 (51.2)	IND (RR)	191 (41.79)	43 (9.41)	IND (SSM)	11 (2.41)	21 (4.6)
94	SHS	316 (55.93)	IND (RR)	222 (39.29)	94 (16.64)	IND (MKS)	4 (0.71)	23 (4.07)
95	IND (RR)	336 (52.17)	SHS	283 (43.94)	53 (8.23)	IND (SSM)	10 (1.55)	15 (2.33)
96	SHS	405 (56.17)	IND (RR)	286 (39.67)	119 (16.5)	IND (SSM)	10 (1.39)	20 (2.77)
97	SHS	340 (68.97)	IND (RR)	129 (26.17)	211 (42.8)	VBA	5 (1.01)	19 (3.85)
98	IND (RR)	365 (63.04)	SHS	160 (27.63)	205 (35.41)	IND (SSM)	25 (4.32)	29 (5.01)
99	IND (RR)	436 (65.86)	SHS	110 (16.62)	326 (49.24)	BSP	53 (8.01)	63 (9.52)
100	IND (RR)	352 (53.82)	SHS	231 (35.32)	121 (18.5)	IND (SSM)	20 (3.06)	51 (7.8)
101	IND (RR)	534 (68.55)	BSP	95 (12.2)	439 (56.35)	SHS	56 (7.19)	94 (12.07)
102	IND (RR)	704 (79.01)	BSP	56 (6.29)	648 (72.72)	SHS	40 (4.49)	91 (10.21)
103	IND (RR)	366 (66.06)	BSP	60 (10.83)	306 (55.23)	VBA	53 (9.57)	75 (13.54)
104	IND (RR)	371 (55.04)	BSP	120 (17.8)	251 (37.24)	VBA	71 (10.53)	112 (16.62)
105	IND (RR)	299 (52.83)	SHS	179 (31.63)	120 (21.2)	IND (SSM)	36 (6.36)	52 (9.19)

Contd....

Socio-Economic Amenities - Rural

Access to Education Facilities

Particulars	Number of Villages (% of Population)				
	Available	Not Available	If Not Available (Distance of Nearest Facility)		
			A	B	C
Govt. Primary School	79 (99)	10 (1)	10 (1)	0 (0)	0 (0)
Private Primary School	3 (13)	86 (87)	0 (0)	0 (0)	0 (0)
Govt. Middle School	37 (77)	52 (23)	28 (15)	19 (6)	0 (0)
Private Middle School	7 (16)	82 (84)	3 (1)	2 (0)	0 (0)
Govt. Secondary School	15 (49)	74 (51)	36 (22)	12 (7)	9 (7)
Private Secondary School	4 (15)	85 (85)	9 (5)	4 (3)	1 (2)
Govt. Senior Secondary School	4 (25)	85 (75)	29 (19)	13 (14)	17 (20)
Private Senior Secondary School	2 (3)	87 (97)	10 (8)	9 (6)	5 (4)
Govt. Arts and Science Degree College	0 (0)	89 (100)	5 (3)	21 (33)	43 (39)
Private Arts and Science Degree College	0 (0)	89 (100)	2 (3)	8 (11)	10 (11)
Govt. Engineering College	0 (0)	89 (100)	2 (2)	14 (18)	57 (55)
Private Engineering College	0 (0)	89 (100)	3 (11)	7 (5)	6 (10)
Govt. Medicine College	0 (0)	89 (100)	2 (2)	6 (10)	68 (76)
Private Medicine College	0 (0)	89 (100)	3 (3)	2 (1)	8 (8)
Govt. Management Institute	0 (0)	89 (100)	2 (2)	6 (10)	64 (63)
Private Management Institute	0 (0)	89 (100)	2 (11)	5 (5)	10 (9)
Govt. Polytechnic	0 (0)	89 (100)	3 (2)	8 (13)	62 (61)
Private Polytechnic	1 (1)	88 (99)	3 (4)	7 (13)	5 (6)
Govt. Vocational Training School/ITI	0 (0)	89 (100)	3 (2)	8 (13)	63 (62)
Private Vocational Training School/ITI	0 (0)	89 (100)	3 (4)	7 (13)	5 (6)
Govt. Non Formal Training Centre	0 (0)	89 (100)	2 (2)	6 (10)	64 (63)
Private Non Formal Training Centre	0 (0)	89 (100)	2 (11)	5 (5)	10 (9)
Govt. School For Disabled	0 (0)	89 (100)	2 (2)	6 (10)	64 (63)
Private School For Disabled	0 (0)	89 (100)	2 (11)	5 (5)	10 (9)
Government Others	0 (0)	89 (100)	0 (0)	0 (0)	0 (0)
Private Others	0 (0)	89 (100)	0 (0)	0 (0)	0 (0)

Note : Distance A : Less than 5 km; B : Between 5-10 km; C : 10+ km.; Source : Data Analysis is based on 2011 Census.

DISCLAIMER

The Terms of Use and Disclaimer of Datanet India Private Limited (hereinafter referred to as "Datanet") for use of this analysis report of **Badnera Assembly Constituency (Badnera Vidhan Sabha)** :-

1. **Assembly Factbook™** is a Registered Trade Mark owned by Datanet.
2. All the maps are sketched and graphical representation only and have not been drawn to the scale and also not to represent the actual geographical area or boundary of the unit.
3. The data for the aforesaid analysis is based on authentic sources and has been culled from the various publications of Census, CSO and NSSO for district and block level data, various central and state government departments, Central & State Elections Commissions and the concerned Returning Officers' releases, Electoral Rolls, Election results and allied publications, internal assessment, surveys, estimates and analysis. Therefore, certain adjustment of data at micro level may have been done to arrive closer to the macro data.
4. Data have been provided on an "As Is" and "As AVAILABLE" basis
5. The colours shown in the maps or diagram and charts of a particular party, alliance or AC are indicative and do not represent them.
6. This publication which includes maps, sheets, graphs and data would be the property under copyright of Datanet only. The user may use these for its internal study, analysis and research purposes. It's public display, re-selling or any commercial uses by the user are not allowed.
7. Datanet has taken due care and caution in compilation and processing of data and allied information, but does not guarantee the accuracy, adequacy or completeness of any information/analysis and will be not responsible for any errors or omissions or for the results obtained from the use of such information/analysis.
8. All the contents for the publication have been culled from various authentic sources and Datanet reasonably believes such sources to be reliable, but does not make any representations, express or implied as to the accuracy or fitness of use of such information. The information or contents of the information/analysis do not constitute advice and should not be relied upon in making (or refraining from making) any decision. Any reliance placed upon the information provided by Datanet is the sole responsibility and strictly at the user's risk.
9. In no event will Datanet be liable for any damages (including, without limitation, damages for loss of business projects, or loss of profits) arising in contract, tort or otherwise from the use of or inability to use any of its contents, or from any action taken (or refrained from being taken) as a result of using the analysis or any of its contents. Datanet its directors, owners, editors, officials, employees, distributor and agents or any associate will not be liable for any errors in the information contained or any consequences arising from the use of the contents of the provided information/analysis.
10. If any provision of these terms and conditions is held invalid or illegal or unenforceable for any reason by any court of competent jurisdiction, such provision shall be severed and the remainder of provisions of the terms and conditions shall continue in full force and effect as if the Term of Use had been executed with the invalid, illegal or unenforceable provision eliminated.
11. If there are any discrepancies in the information provided, please bring it to attention of Datanet for suitable rectification measures.

**Buy Online This Complete Book At
Datanet India eBooks Store**

www.indiastatpublications.com

or go directly at

[http://www.indiastatpublications.com/
Assembly_factbook/Maharashtra/Amravati/ Badnera](http://www.indiastatpublications.com/Assembly_factbook/Maharashtra/Amravati/Badnera)



i **india**stat**elections**

