



Maharashtra

Assembly Factbook™

Tumsar Assembly Constituency



Key Electoral Data of Tumsar
Assembly Constituency (Vidhan Sabha)

Maharashtra

Assembly Factbook™

Tumsar Assembly Constituency



Tumsar Vidhan Sabha

Editor & Director

Dr. R.K. Thukral

Research Editor

Dr. Shafeeq Rahman

Compiled, Researched and Published by Datanet India Pvt. Ltd.

D-100, 1st Floor,

Okhla Industrial Area, Phase-I,
New Delhi- 110020.

Ph.: 91-11- 43580781-84

Email : support@indiastatpublications.com

Website : www.indiastatelections.com

Online Book Store :

www.indiastatpublications.com

Report No. : AFB/MH-060-0123

ISBN : 978-93-5293-362-4

First Edition : January, 2018

Sixth Updated Edition : January, 2023

Price : Rs. 11500/-

US\$ 310

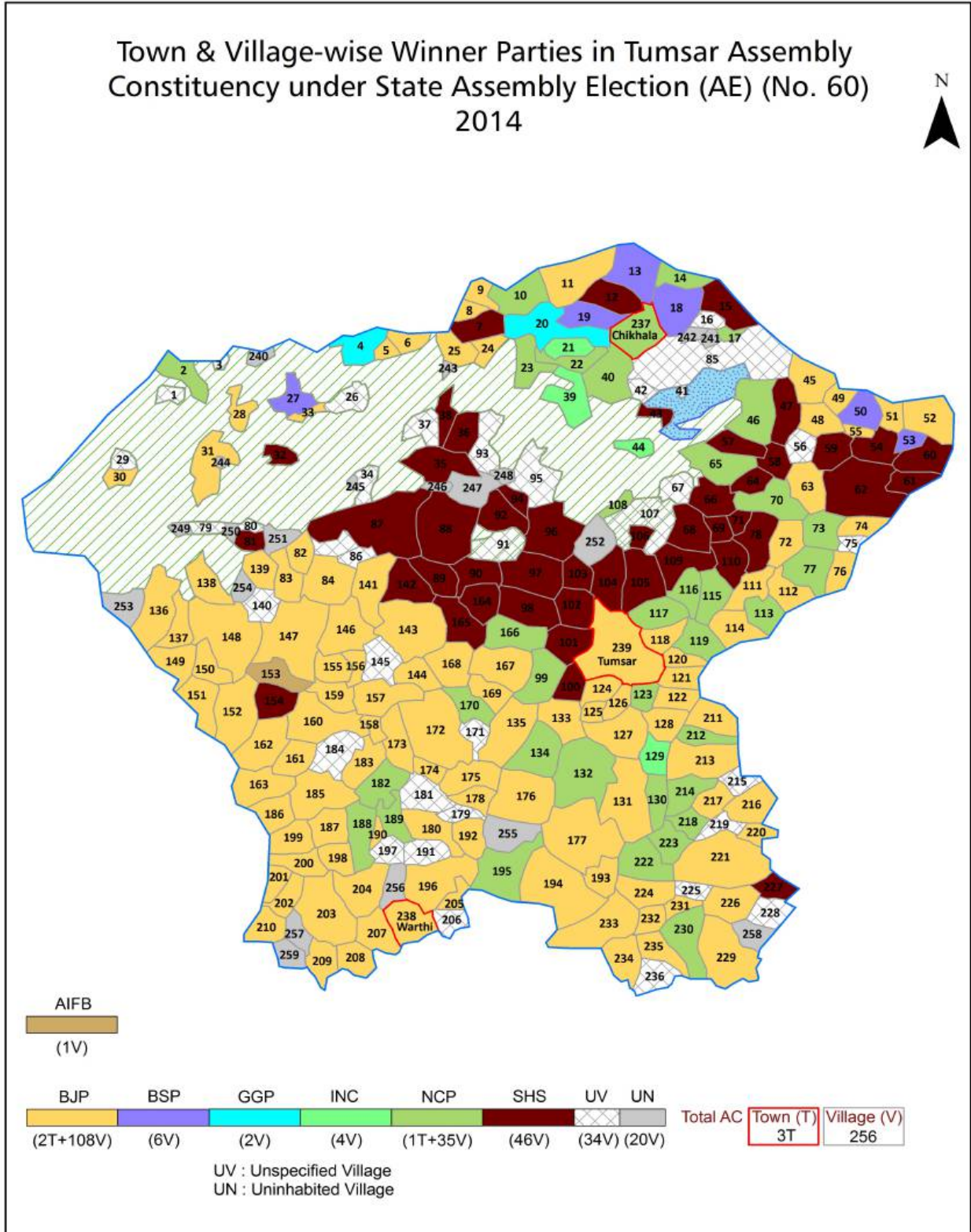
© Datanet India Pvt. Ltd.

All rights reserved. No part of this book may be reproduced, stored in a retrieval system or transmitted in any form or by any means, mechanical photocopying, photographing, scanning, recording or otherwise without the prior written permission of the publisher. Please refer to Disclaimer at page no. 224 for the use of this publication.

Printed in India

No.	Particulars	Page No.
	Introduction	
1	Assembly Constituency - (Vidhan Sabha) at a Glance Features of Assembly as per Delimitation Commission of India (2008)	1-2
	Location and Political Maps	
2	Location Map Boundaries of Assembly Constituency - (Vidhan Sabha) in District Boundaries of Assembly Constituency under Parliamentary Constituency - (Lok Sabha) Town & Village-wise Winner Parties- 2019-PE, 2019-AE, 2014-PE and 2014-AE	3-10
	Administrative Setup (2011)	
3	District Sub-district Towns Villages Inhabited Villages Uninhabited Villages Village Panchayat Intermediate Panchayat	11-23
	Demographics (2011)	
4	Population Households Rural/Urban Population Towns and Villages by Population Size Sex Ratio (Total & 0-6 Years) Religious Population Social Population Literacy Rate	24-25
	Electoral Features	
5	Important Dates of Last Elections Held Electors by Gender Service Electors Voters Voters Turnout Polling Stations & Average Number of Electors per Polling Station Electors by Age Group Present Elected Representatives	26-31
	Historical Summary Election Results	
6	Vote Share of Major Parties Winning Margin (Number & Percentage) Polarity of Parties Summary Result of Assembly Segment of Parliamentary Elections 2019, 2014, 2009, 2004 and 1999 Summary Result of Assembly Elections 2019, 2014, 2009, 2004, 1999, 1995, 1990, 1985, 1980, 1978, 1972, 1967 and 1962	32-54
	Polling Station Level Election Results	
7	Name and Number of Polling Station 2019-PE, 2019-AE, 2014-PE and 2014-AE Polling Station-wise Electors, Voters & Voters Turnout 2019-PE, 2019-AE, 2014-PE and 2014-AE Polling Station wise Elections Results 2019-PE, 2019-AE, 2014-PE and 2014-AE	55-202
	Share of Assembly Constituency	
8	Share of Assembly Constituency - (Vidhan Sabha) in State, District and Parliamentary Constituency - (Lok Sabha)	203
	Socio-Economic Amenities (2011)	
9	Access to Administrative Units Agricultural, Manufacturing and Industrial Commodities Demographic Indicators Education Health & Manpower Drinking Water Supply Sanitation Entertainment and Recreations Infrastructure Power Food Allocation Distribution and Marketing of Agriculture Commodities Infrastructure Transport and Road Infrastructure Communication Banking and Financial Services Land Use Irrigation Source	205-219
10	Abbreviation & Sources	221-222
11	Disclaimer	224

Location & Political Map



Administrative Setup

List of Village Panchayat & Intermediate Panchayat (Block) Name - 2011

Village Name	Village Panchayat Name	Intermediate Panchayat Name
Agri	Chullardoh	Tumsar
Akola	Akola	Mohadi
Alesur	Alesur	Tumsar
Ambagad	Ambagad	Tumsar
Andhalgaon	Andhalgaon	Mohadi
Asalpani	Asalpani	Tumsar
Ashti	Ashti	Tumsar
Bacchera	Bacchera	Mohadi
Bajartola	Dongari Bu	Tumsar
Balapur Hamesha	Balapur Hamesha	Tumsar
Bapera (Ambagad)	Bapera	Tumsar
Bapera (Sihora)	Bapera	Tumsar
Betala	Betala	Mohadi
Bhikarkheda	Bhikarkheda	Mohadi
Bhondki	-	Tumsar
Bhosa	Bhosa	Mohadi
Bidsitepar	Bidsitepar	Mohadi
Binakhi	Binakhi	Tumsar
Bitekhari	Deolgaon	Mohadi
Bonde	Khadki	Mohadi
Bondri	Bondri	Mohadi
Borgaon	Borgaon	Tumsar
Borgaon(mundhari)	Borgaon	Mohadi
Bori	Bori	Tumsar
Bori	Panjara (Bori)	Mohadi
Boteswar	Mandesar	Mohadi
Bothali	Bothali	Mohadi
Brahmantola	Mahalgaon	Tumsar
Bramhani	Bramhani	Tumsar

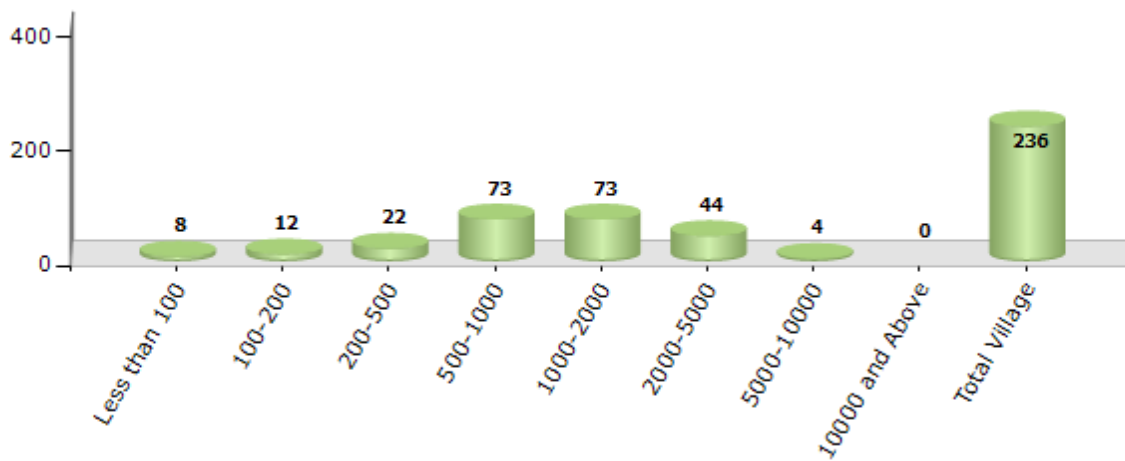
Contd....

Demographics

Number of Villages by Population Size - 2011

Less than 100	100-200	200-500	500-1000	1000-2000	2000-5000	5000-10000	10000 and Above	Total Village
8	12	22	73	73	44	4	0	236

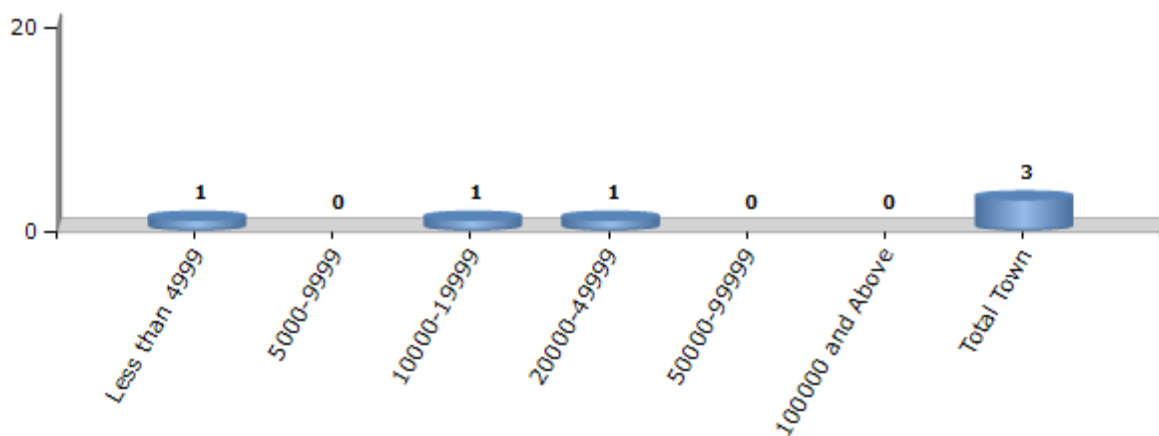
Number of Villages by Population Size - 2011



Number of Towns by Population Size - 2011

Less than 4999	5000-9999	10000-19999	20000-49999	50000-99999	100000 and Above	Total Town
1	0	1	1	0	0	3

Number of Towns by Population Size - 2011

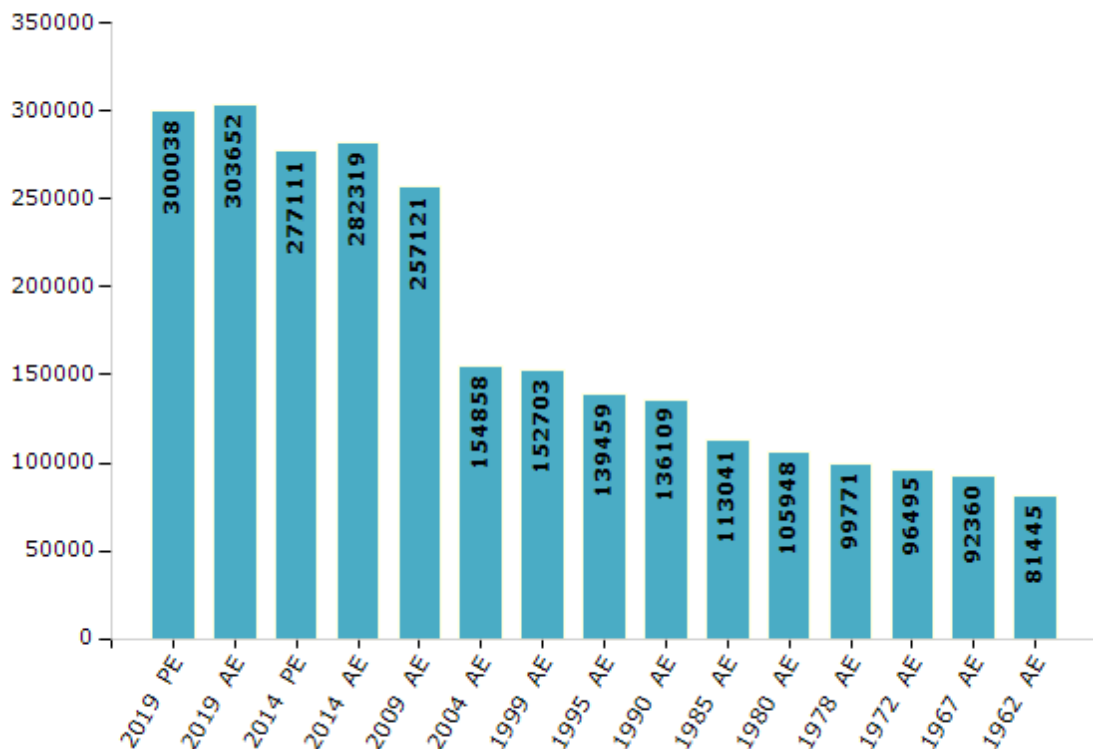


Electoral Features

Electors by Male & Female

Year	Male	Female	Others	Total	Year	Male	Female	Others	Total
2019 PE	152402	147636	0	300038	1999 AE	79669	73034	-	152703
2019 AE	153942	149710	0	303652	1995 AE	69859	69600	-	139459
2014 PE	141627	135484	0	277111	1990 AE	68994	67115	-	136109
2014 AE	143752	138567	0	282319	1985 AE	55638	57403	-	113041
2009 PE	-	-	-	-	1980 AE	52424	53524	-	105948
2009 AE	129787	127334	-	257121	1978 AE	48797	50974	-	99771
2004 PE	-	-	-	-	1972 AE	47307	49188	-	96495
2004 AE	77509	77349	-	154858	1967 AE	-	-	-	92360
1999 PE	-	-	-	-	1962 AE	-	-	-	81445

Number of Electors



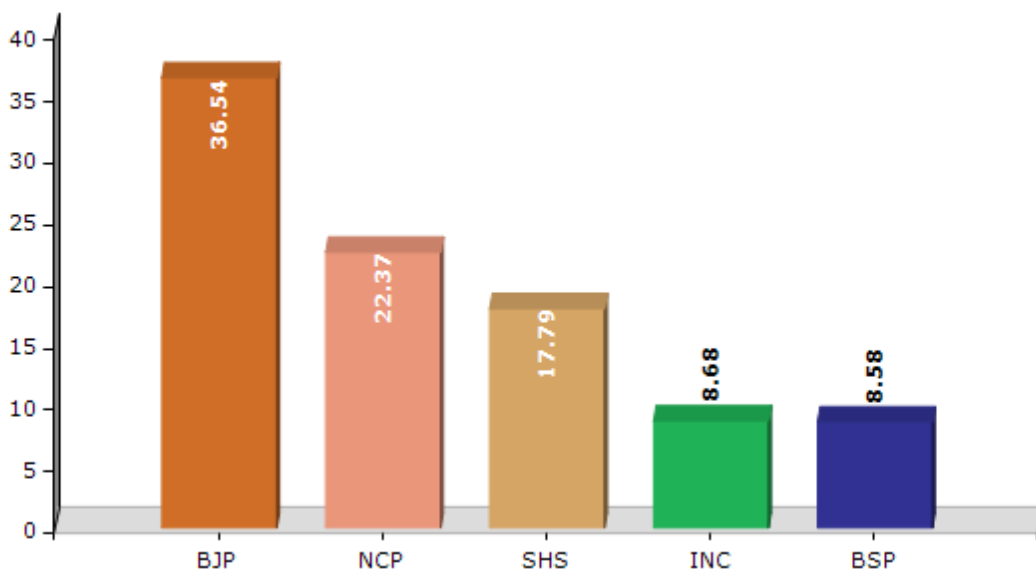
Note : AE : Assembly Election, PE : Assembly Segment of Parliamentary Election

Historical Summary Election Results

Summary Result of Assembly Election - 2014

Candidate Name	Party	Votes	Votes %
Waghmare Charan Sovinda	BJP	73952	36.54
Kukade Madhukar Yashwantrao	NCP	45273	22.37
Patle Rajendra Sahasram	SHS	36005	17.79
Titirmare Pramod Narayan	INC	17579	8.68
Thakre Namdeo Modku	BSP	17375	8.58
Shahare Vijay Ramkrushna	MNS	2666	1.32
Dhurve Subhash Mansaram	GGP	2403	1.19
Dr. Pratap(Sonu) Arjun Gondule	IND	2121	1.05
Ganesh Gangaram Dhande	AIFB	1017	0.5
Shailesh Chandrakant Thakare	IND	948	0.47
Vinod Tulashiram Babhare	IND	599	0.3
Ramteke Umakant Fulchand	BBM	486	0.24
Dahat Sharayu Baburao	BMUP	468	0.23
	NOTA	1519	0.75

Votes Percentage of Top Parties - 2014



Polling Station Level Election Results

Number and Name of Polling Stations (PS) (2019 AE)

Number of Polling Stations	Name of Polling Stations	Number of Polling Stations	Name of Polling Stations
1	Jilhaparishad purv Madhyamik Shala Chikhali	22	Jilha Parishad Purv Madhyamik Shala Kavalevada Eas
2	Jilhaparishad Purv Madhyamik Shala Devanara	23	Jilha Parishad Purv Madhyamik Shala Chikhala Marat
3	Jilhaparishad Center Prathamik Shala Bajaratola Ut	24	Jilha Parishad Purv Madhyamik Marathi Shala Chikha
4	Jilhaparishad Center Prathamik Shala Dongri Bu. Ba	25	Jilha Parishad Purv Madhyamik Shala Chikhala Marat
5	Jilhaparishad Kendriy Prathamik Shala Dongri Buj U	26	Jilha Parishad Prathamik Shala Yedarabuchi Uttarek
6	Jilhaparishad Kendriy Prathamik Shala Dongri Buj E	27	Jilha Parishad Prathamik Shala Sundaratola
7	Jilhaparishad Prathamik Shala Chandamara	28	Jilha Parishad Purv Madhmik Shala Rajapur
8	Jilhaparishad Adarsh purv Madhyamik Shala Lobhi Ea	29	Jilha Parishad Purv Madhmik Shala Rajapur North Ea
9	Jilha Parishad Adarsh purv Madhyamik Shala Lobhi W	30	Jilha Parishad Prathamik Shala Paunarakhari Hamesh
10	Jilha Parishad purv Madhyamik Shala,Chokni New Bui	31	Jilhaparishad Prathamik Shala Balapur Hamesha Te
11	Jilha Parishad Purv Madhyamik Shala, Sarve shiksha	32	Jilhaparishad Prathamik Shala Kuramuda East side R
12	R.I.D.F. Anganwadi kendra no.5 West side Ashti	33	Jilhaparishad Prathamik Shala Goditola South side
13	Anganwadi kendra no.2 East side Near Gram Panchaya	34	Jilhaparishad Purv Madhyamik Shala Alesur East si
14	Jilha Parishad Jr. College Room no.3 Nakadongari	35	Jilhaparishad Prathamik Shala ,Khapa Khurd East si
15	Jilha Parishad Bunyadi Prathamik Shala Nakadongari	36	Jilhaparishad Purv Prathamik Shala Rongha Teh. T
16	Jilha Parishad Bunyadi Prathamik Shala shatkoni Ne	37	Jilhaparishad Prathamik Shala Mangarali Teh. Tums
17	Jilha Parishad Purv Madhyamik Shala Pathari Dakshi	38	Jilha Parishad Purv Madhyamik Shala Pipariya Daks
18	Jilha Parishad Purv Madhyamik Shala Pathari Uttare	39	Jilha Parishad Prathamik Shala Govaritola Teh. Tu
19	Jilha Parishad Prathamik Shala Dhutera	40	Jilhaparishad Prathamik Shala Ledezari , Teh. Tu
20	Jilha Parishad Prathamik Shala Hirapur Hamesha Nav	41	Jilhaparishad Prathamik Shala Mothagav Navin Imara
21	Jilha Parishad Purv Madhyamik Shala Uttarekadil Kh	42	Jilhaparishad Prathamik Shala Asalapani Navin Imar

Contd....

Polling Station Level Election Results

Polling Station-wise Votes Secured by Overall Top Five Parties in Tumsar Assembly in Assembly Election (AE) under Bhandara - Gondiya Parliamentary Constituency in Maharashtra (2019)

Number of Polling Station	Winner - Karemore Raju Manikrao (NCP)	Runner-up - Charan Sovinda Waghmare (IND)	3rd - Pradeep Motiram Padole (BJP)	4th - Pro. Dr. Chhaya Murlidhar Gabhane (BSP)	5th - Dr. Pankaj Subhash chandra Karemore (IND)	NOTA	Other	Total Votes Secured
36	241	491	70	3	9	9	34	857
37	74	273	45	3	23	4	15	437
38	308	275	16	8	6	7	9	629
39	52	432	27	0	4	1	6	522
40	88	217	52	1	11	4	30	403
41	83	214	59	1	16	5	11	389
42	204	203	48	5	92	9	12	573
43	152	71	124	4	35	5	12	403
44	179	201	172	0	13	8	17	590
45	153	267	120	2	6	11	32	591
46	223	254	169	2	17	3	15	683
47	321	209	141	13	37	11	26	758
48	193	200	85	4	19	6	11	518
49	396	141	178	9	28	16	24	792
50	246	241	79	30	7	7	9	619
51	242	175	105	62	15	6	37	642
52	189	142	162	44	28	11	43	619
53	171	66	63	4	23	1	15	343
54	300	217	42	4	3	3	9	578
55	236	147	73	9	3	0	11	479
56	303	326	115	5	14	9	18	790
57	265	217	153	6	7	6	16	670
58	83	49	28	0	18	1	1	180
59	118	179	156	6	33	2	12	506
60	158	216	284	4	26	12	20	720
61	181	101	194	16	14	4	21	531
62	194	221	111	7	2	7	30	572
63	198	227	117	6	18	10	23	599
64	246	223	23	0	7	7	8	514
65	200	244	82	4	10	10	13	563
66	158	178	72	0	8	2	5	423
67	220	208	9	5	4	5	4	455
68	108	166	7	0	3	0	5	289
69	253	532	59	4	1	5	18	872
70	169	172	5	0	1	0	6	353

Contd....

Polling Station Level Election Results

Winner, Runner-up and 3rd Party Position & Winning Margin According to Polling Stations in Tumsar Assembly in Assembly Election (AE) under Bhandara - Gondiya Parliamentary Constituency in Maharashtra (2019)

Polling Station Number	Winner Party	Winner Votes (%)	Runner-up Party	Runner-up Votes (%)	Winning Margin Votes (%)	Third Party	Third Party Votes (%)	Other Votes (%)
71	IND (CSW)	570 (70.2)	NCP	216 (26.6)	354 (43.6)	IND (DPSK)	10 (1.23)	16 (1.97)
72	IND (CSW)	523 (63.7)	NCP	248 (30.21)	275 (33.49)	BJP	20 (2.44)	30 (3.65)
73	IND (CSW)	560 (69.39)	NCP	216 (26.77)	344 (42.62)	BJP	14 (1.73)	17 (2.11)
74	IND (CSW)	403 (62.29)	NCP	196 (30.29)	207 (32)	BJP	27 (4.17)	21 (3.25)
75	IND (CSW)	398 (54.6)	NCP	267 (36.63)	131 (17.97)	BJP	32 (4.39)	32 (4.39)
76	IND (CSW)	325 (53.28)	NCP	210 (34.43)	115 (18.85)	BJP	34 (5.57)	41 (6.72)
77	IND (CSW)	396 (55.15)	NCP	241 (33.57)	155 (21.58)	BJP	43 (5.99)	38 (5.29)
78	IND (CSW)	251 (47.45)	NCP	241 (45.56)	10 (1.89)	BJP	24 (4.54)	13 (2.46)
79	IND (CSW)	247 (48.91)	NCP	231 (45.74)	16 (3.17)	BJP	19 (3.76)	8 (1.58)
80	IND (CSW)	316 (55.34)	NCP	202 (35.38)	114 (19.96)	BJP	33 (5.78)	20 (3.5)
81	NCP	312 (51.74)	IND (CSW)	245 (40.63)	67 (11.11)	BJP	28 (4.64)	18 (2.99)
82	IND (CSW)	550 (59.01)	NCP	338 (36.27)	212 (22.74)	BJP	18 (1.93)	26 (2.79)
83	NCP	150 (40.87)	IND (CSW)	109 (29.7)	41 (11.17)	BJP	100 (27.25)	8 (2.18)
84	NCP	254 (45.36)	IND (CSW)	231 (41.25)	23 (4.11)	BJP	38 (6.79)	37 (6.61)
85	NCP	266 (41.82)	BJP	226 (35.53)	40 (6.29)	IND (CSW)	103 (16.19)	41 (6.45)
86	IND (CSW)	327 (47.19)	NCP	228 (32.9)	99 (14.29)	BJP	94 (13.56)	44 (6.35)
87	BJP	406 (48.05)	IND (CSW)	216 (25.56)	190 (22.49)	NCP	181 (21.42)	42 (4.97)
88	NCP	95 (70.9)	IND (CSW)	15 (11.19)	80 (59.71)	BJP	15 (11.19)	9 (6.72)
89	NCP	288 (41.8)	BJP	185 (26.85)	103 (14.95)	IND (CSW)	124 (18)	92 (13.35)
90	NCP	202 (39.53)	IND (CSW)	173 (33.86)	29 (5.67)	BJP	94 (18.4)	42 (8.22)
91	NCP	240 (55.43)	IND (CSW)	107 (24.71)	133 (30.72)	BJP	72 (16.63)	14 (3.23)
92	NCP	180 (41.28)	BJP	129 (29.59)	51 (11.69)	IND (CSW)	115 (26.38)	12 (2.75)
93	NCP	179 (53.27)	BJP	76 (22.62)	103 (30.65)	IND (CSW)	65 (19.35)	16 (4.76)
94	NCP	286 (47.51)	IND (CSW)	144 (23.92)	142 (23.59)	BSP	78 (12.96)	94 (15.61)
95	NCP	366 (57.91)	IND (CSW)	158 (25)	208 (32.91)	BJP	60 (9.49)	48 (7.59)
96	NCP	308 (41.12)	IND (CSW)	230 (30.71)	78 (10.41)	BSP	125 (16.69)	86 (11.48)
97	NCP	287 (42.58)	IND (CSW)	210 (31.16)	77 (11.42)	BSP	102 (15.13)	75 (11.13)
98	NCP	229 (41.11)	IND (CSW)	206 (36.98)	23 (4.13)	BJP	72 (12.93)	50 (8.98)
99	IND (CSW)	370 (48.81)	NCP	330 (43.54)	40 (5.27)	BJP	27 (3.56)	31 (4.09)
100	NCP	256 (45.23)	IND (CSW)	215 (37.99)	41 (7.24)	BJP	68 (12.01)	27 (4.77)
101	NCP	324 (52.17)	IND (CSW)	217 (34.94)	107 (17.23)	BJP	54 (8.7)	26 (4.19)
102	NCP	374 (51.16)	IND (CSW)	241 (32.97)	133 (18.19)	BJP	87 (11.9)	29 (3.97)
103	NCP	340 (53.46)	IND (CSW)	158 (24.84)	182 (28.62)	BJP	87 (13.68)	51 (8.02)
104	NCP	351 (52.86)	IND (CSW)	204 (30.72)	147 (22.14)	BJP	73 (10.99)	36 (5.42)
105	NCP	236 (35.81)	IND (CSW)	216 (32.78)	20 (3.03)	BJP	156 (23.67)	51 (7.74)

Contd....

Socio-Economic Amenities - Rural

Access to Education Facilities

Particulars	Number of Villages (% of Population)				
	Available	Not Available	If Not Available (Distance of Nearest Facility)		
			A	B	C
Govt. Primary School	226 (100)	10 (0)	9 (0)	0 (0)	0 (0)
Private Primary School	15 (15)	221 (85)	1 (0)	0 (0)	0 (0)
Govt. Middle School	138 (81)	98 (19)	58 (12)	26 (4)	0 (0)
Private Middle School	25 (26)	211 (74)	11 (2)	3 (0)	0 (0)
Govt. Secondary School	52 (45)	184 (55)	77 (23)	48 (15)	10 (3)
Private Secondary School	14 (13)	222 (87)	26 (7)	19 (5)	0 (0)
Govt. Senior Secondary School	22 (23)	214 (77)	60 (19)	66 (24)	30 (11)
Private Senior Secondary School	5 (6)	231 (94)	31 (12)	20 (7)	4 (1)
Govt. Arts and Science Degree College	0 (0)	236 (100)	22 (10)	61 (30)	49 (15)
Private Arts and Science Degree College	2 (4)	234 (96)	24 (10)	36 (15)	42 (17)
Govt. Engineering College	0 (0)	236 (100)	12 (6)	43 (21)	90 (32)
Private Engineering College	0 (0)	236 (100)	9 (4)	23 (11)	59 (27)
Govt. Medicine College	0 (0)	236 (100)	12 (6)	43 (21)	110 (39)
Private Medicine College	0 (0)	236 (100)	9 (4)	19 (8)	43 (22)
Govt. Management Institute	1 (1)	235 (99)	6 (2)	37 (19)	150 (58)
Private Management Institute	0 (0)	236 (100)	1 (1)	4 (2)	37 (17)
Govt. Polytechnic	0 (0)	236 (100)	7 (3)	44 (21)	134 (51)
Private Polytechnic	1 (1)	235 (99)	6 (2)	11 (6)	33 (15)
Govt. Vocational Training School/ITI	0 (0)	236 (100)	7 (3)	44 (21)	135 (52)
Private Vocational Training School/ITI	0 (0)	236 (100)	6 (2)	11 (6)	33 (15)
Govt. Non Formal Training Centre	0 (0)	236 (100)	5 (3)	20 (10)	170 (68)
Private Non Formal Training Centre	0 (0)	236 (100)	1 (1)	4 (2)	36 (17)
Govt. School For Disabled	0 (0)	236 (100)	5 (3)	20 (10)	169 (67)
Private School For Disabled	0 (0)	236 (100)	1 (1)	4 (2)	37 (17)
Government Others	0 (0)	236 (100)	0 (0)	0 (0)	0 (0)
Private Others	0 (0)	236 (100)	0 (0)	0 (0)	0 (0)

Note : Distance A : Less than 5 km; B : Between 5-10 km; C : 10+ km.; Source : Data Analysis is based on 2011 Census.

DISCLAIMER

The Terms of Use and Disclaimer of Datanet India Private Limited (hereinafter referred to as "Datanet") for use of this analysis report of **Tumsar Assembly Constituency (Tumsar Vidhan Sabha) :-**

1. **Assembly Factbook™** is a Registered Trade Mark owned by Datanet.
2. All the maps are sketched and graphical representation only and have not been drawn to the scale and also not to represent the actual geographical area or boundary of the unit.
3. The data for the aforesaid analysis is based on authentic sources and has been culled from the various publications of Census, CSO and NSSO for district and block level data, various central and state government departments, Central & State Elections Commissions and the concerned Returning Officers' releases, Electoral Rolls, Election results and allied publications, internal assessment, surveys, estimates and analysis. Therefore, certain adjustment of data at micro level may have been done to arrive closer to the macro data.
4. Data have been provided on an "As Is" and "As AVAILABLE" basis
5. The colours shown in the maps or diagram and charts of a particular party, alliance or AC are indicative and do not represent them.
6. This publication which includes maps, sheets, graphs and data would be the property under copyright of Datanet only. The user may use these for its internal study, analysis and research purposes. It's public display, re-selling or any commercial uses by the user are not allowed.
7. Datanet has taken due care and caution in compilation and processing of data and allied information, but does not guarantee the accuracy, adequacy or completeness of any information/analysis and will be not responsible for any errors or omissions or for the results obtained from the use of such information/analysis.
8. All the contents for the publication have been culled from various authentic sources and Datanet reasonably believes such sources to be reliable, but does not make any representations, express or implied as to the accuracy or fitness of use of such information. The information or contents of the information/analysis do not constitute advice and should not be relied upon in making (or refraining from making) any decision. Any reliance placed upon the information provided by Datanet is the sole responsibility and strictly at the user's risk.
9. In no event will Datanet be liable for any damages (including, without limitation, damages for loss of business projects, or loss of profits) arising in contract, tort or otherwise from the use of or inability to use any of its contents, or from any action taken (or refrained from being taken) as a result of using the analysis or any of its contents. Datanet its directors, owners, editors, officials, employees, distributor and agents or any associate will not be liable for any errors in the information contained or any consequences arising from the use of the contents of the provided information/analysis.
10. If any provision of these terms and conditions is held invalid or illegal or unenforceable for any reason by any court of competent jurisdiction, such provision shall be severed and the remainder of provisions of the terms and conditions shall continue in full force and effect as if the Term of Use had been executed with the invalid, illegal or unenforceable provision eliminated.
11. If there are any discrepancies in the information provided, please bring it to attention of Datanet for suitable rectification measures.

**Buy Online This Complete Book At
Datanet India eBooks Store**

www.indiastatpublications.com

or go directly at

[http://www.indiastatpublications.com/
Assembly_factbook/Maharashtra/Bhandara-Gondiya/ Tumsar](http://www.indiastatpublications.com/Assembly_factbook/Maharashtra/Bhandara-Gondiya/Tumsar)



i **india**stat**elections**

ISBN : 978-93-5293-362-4



9 789352 933624