



Maharashtra

Assembly Factbook™

Kalwan Assembly Constituency



Key Electoral Data of Kalwan
Assembly Constituency (Vidhan Sabha)

Maharashtra

Assembly Factbook™

Kalwan Assembly Constituency



Kalwan Vidhan Sabha

Editor & Director

Dr. R.K. Thukral

Research Editor

Dr. Shafeeq Rahman

Compiled, Researched and Published by Datanet India Pvt. Ltd.

D-100, 1st Floor,

Okhla Industrial Area, Phase-I,
New Delhi- 110020.

Ph.: 91-11- 43580781-84

Email : support@indiastatpublications.com

Website : www.indiastatelections.com

Online Book Store :

www.indiastatpublications.com

Report No. : AFB/MH-117-0125

ISBN : 978-93-5293-242-9

First Edition : January, 2018

Eighth Updated Edition : January, 2025

Price : Rs. 11500/-

US\$ 310

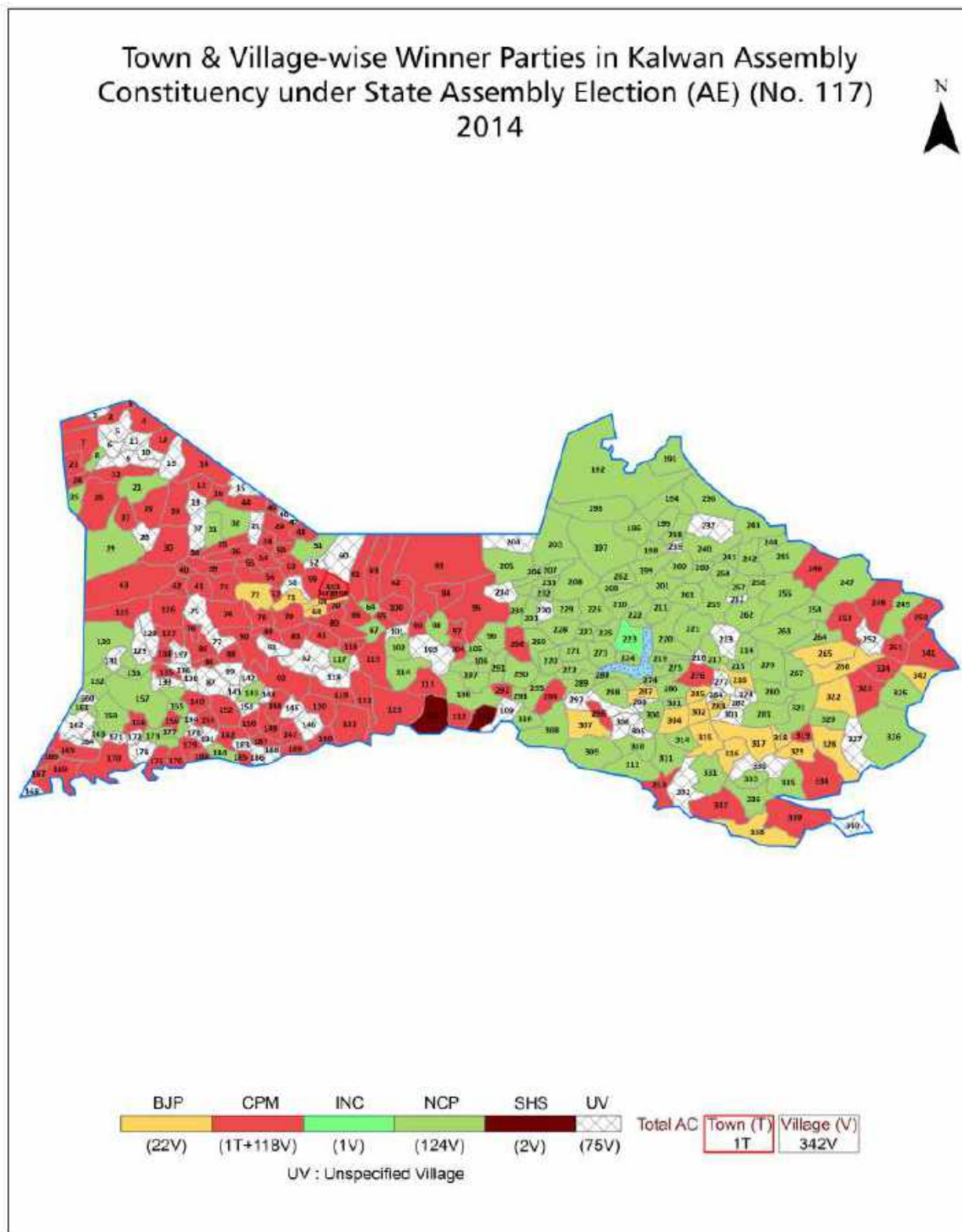
© Datanet India Pvt. Ltd.

All rights reserved. No part of this book may be reproduced, stored in a retrieval system or transmitted in any form or by any means, mechanical photocopying, photographing, scanning, recording or otherwise without the prior written permission of the publisher. Please refer to Disclaimer at page no. 217 for the use of this publication.

Printed in India

No.	Particulars	Page No.
	Introduction	
1	Assembly Constituency - (Vidhan Sabha) at a Glance Features of Assembly as per Delimitation Commission of India (2008)	1-2
	Location and Political Maps	
2	Location Map Boundaries of Assembly Constituency - (Vidhan Sabha in District Boundaries of Assembly Constituency under Parliamentary Constituency - (Lok Sabha) Town & Village-wise Winner Parties- 2024-PE, 2024-AE, 2019-PE, 2019-AE, 2014-PE, 2014-AE	3-10
	Administrative Setup (2011)	
3	District Sub-district Towns Villages Inhabited Villages Uninhabited Villages Village Panchayat Intermediate Panchayat	11-27
	Demographics (2011)	
4	Population Households Rural/Urban Population Towns and Villages by Population Size Sex Ratio (Total & 0-6 Years) Religious Population Social Population Literacy Rate	28-29
	Electoral Features	
5	Important Dates of Last Elections Held Electors by Gender Service Electors Voters Voters Turnout Polling Stations & Average Number of Electors per Polling Station Electors by Age Group Present Elected Representatives	30-35
	Historical Summary Election Results	
6	Vote Share of Major Parties Winning Margin (Number & Percentage Polarity of Parties Summary Result of Assembly Segment of Parliamentary Elections 2024, 2019, 2014, 2009, 2004 and 1999 Summary Result of Assembly Elections 2024, 2019, 2014, 2009, 2004, 1999, 1995, 1990, 1985, 1980, 1978 and 1962	36-55
	Polling Station Level Election Results	
7	Name and Number of Polling Station 2024-PE, 2024-AE, 2019-PE, 2019-AE, 2014-PE, 2014-AE Polling Station-wise Electors, Voters & Voters Turnout 2024-PE, 2024-AE, 2019-PE, 2019-AE, 2014-PE, 2014-AE Polling Station wise Elections Results 2024-PE, 2024-AE, 2019-PE, 2019-AE, 2014-PE, 2014-AE	56-197
	Share of Assembly Constituency	
8	Share of Assembly Constituency - (Vidhan Sabha) in State, District and Parliamentary Constituency - (Lok Sabha)	198
	Socio-Economic Amenities (2011)	
9	Access to Administrative Units Agricultural, Manufacturing and Industrial Commodities Demographic Indicators Education Health & Manpower Drinking Water Supply Sanitation Entertainment and Recreations Infrastructure Power Food Allocation Distribution and Marketing of Agriculture Commodities Infrastructure Transport and Road Infrastructure Communication Banking and Financial Services Land Use Irrigation Source	200-212
10	Abbreviation & Sources	214-215
11	Disclaimer	217

Location & Political Map



Administrative Setup

List of Village Panchayat & Intermediate Panchayat (Block) Name - 2011

Village Name	Village Panchayat Name	Intermediate Panchayat Name
Abhona	Abhona	Kalwan
Ahmadgavhan	Malgavhan	Surgana
Alangun	Alangun	Surgana
Alivdand	Barhe	Surgana
Ambapur	Verule	Kalwan
Ambatha	Ambatha	Surgana
Ambepada	Haste	Surgana
Ambika Ozar	Ambika Ozar	Kalwan
Ambode	Ambode	Surgana
Ambupada	Ambode	Surgana
Amburdi Bk.	Mohamukh	Kalwan
Amburdi Kh.	Mohamukh	Kalwan
Amdabarhe	Amdabarhe	Surgana
Amdapalsan	Amdapalsan	Surgana
Amdar	Lingame	Kalwan
Amzar	Dolhare	Surgana
Asoli	Wadi Bk	Kalwan
Athambe	Athambe	Kalwan
Awalpada	Awalpada	Surgana
Babkhede	Babkhede	Kalwan
Baflun	Kathipada	Surgana
Bagadu	Bagadu	Kalwan
Balapur	Gopalkhadi	Kalwan
Barde	Gosarane	Kalwan
Bardipada	Gondune	Surgana
Barhe	Barhe	Surgana
Bedse	Bedse	Surgana
Bej	Bej	Kalwan
Belbare	Gosrane	Kalwan

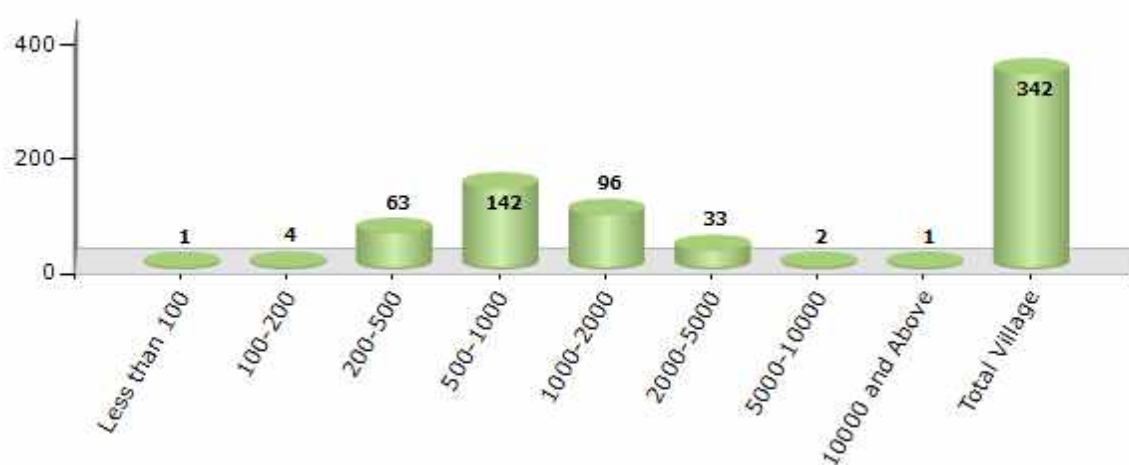
Contd....

Demographics

Number of Villages by Population Size - 2011

Less than 100	100-200	200-500	500-1000	1000-2000	2000-5000	5000-10000	10000 and Above	Total Village
1	4	63	142	96	33	2	1	342

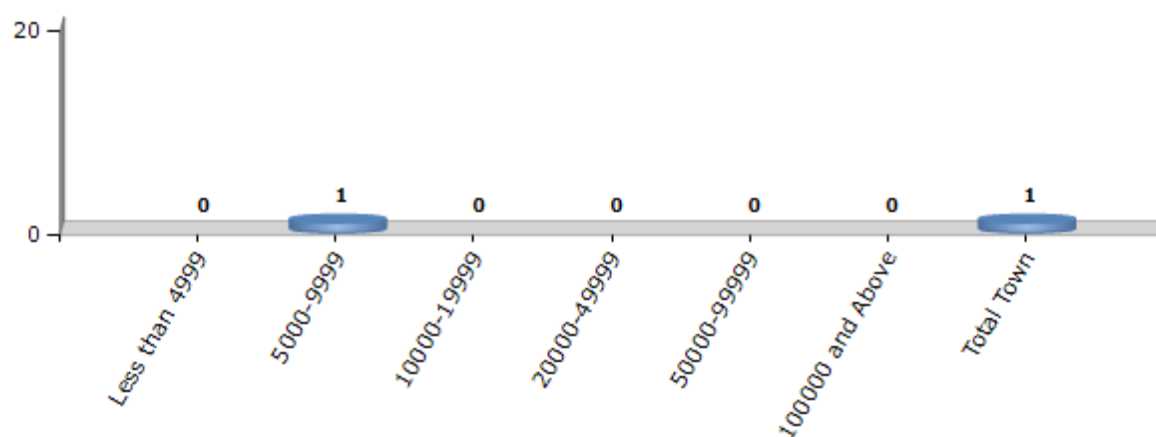
Number of Villages by Population Size - 2011



Number of Towns by Population Size - 2011

Less than 4999	5000-9999	10000-19999	20000-49999	50000-99999	100000 and Above	Total Town
0	1	0	0	0	0	1

Number of Towns by Population Size - 2011



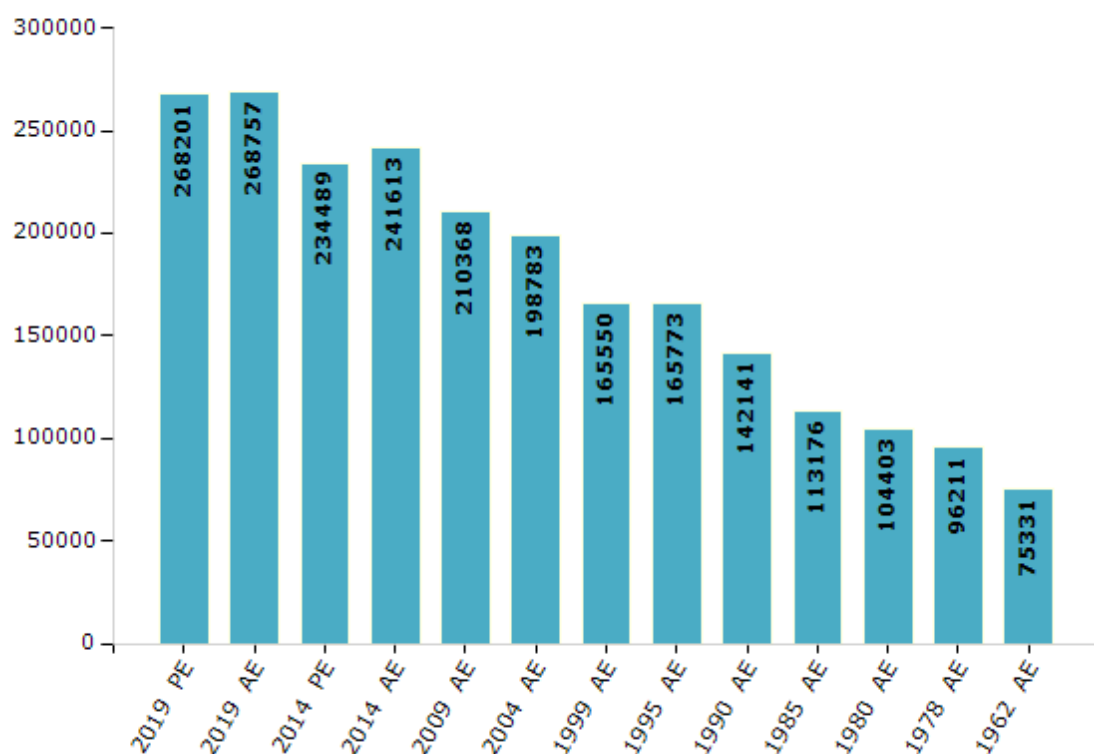
Electoral Features

Electors by Male & Female

Year	Male	Female	Others	Total
2019 PE	137149	131050	2	268201
2019 AE	137255	131502	0	268757
2014 PE	121871	112606	12	234489
2014 AE	124813	116786	14	241613
2009 PE	-	-	-	-
2009 AE	107694	102674	-	210368
2004 PE	-	-	-	-
2004 AE	102772	96011	-	198783
1999 PE	-	-	-	-

Year	Male	Female	Others	Total
1999 AE	84441	81109	-	165550
1995 AE	83860	81913	-	165773
1990 AE	72359	69782	-	142141
1985 AE	56525	56651	-	113176
1980 AE	51673	52730	-	104403
1978 AE	47503	48708	-	96211
1972 AE	-	-	-	-
1967 AE	-	-	-	-
1962 AE	-	-	-	75331

Number of Electors



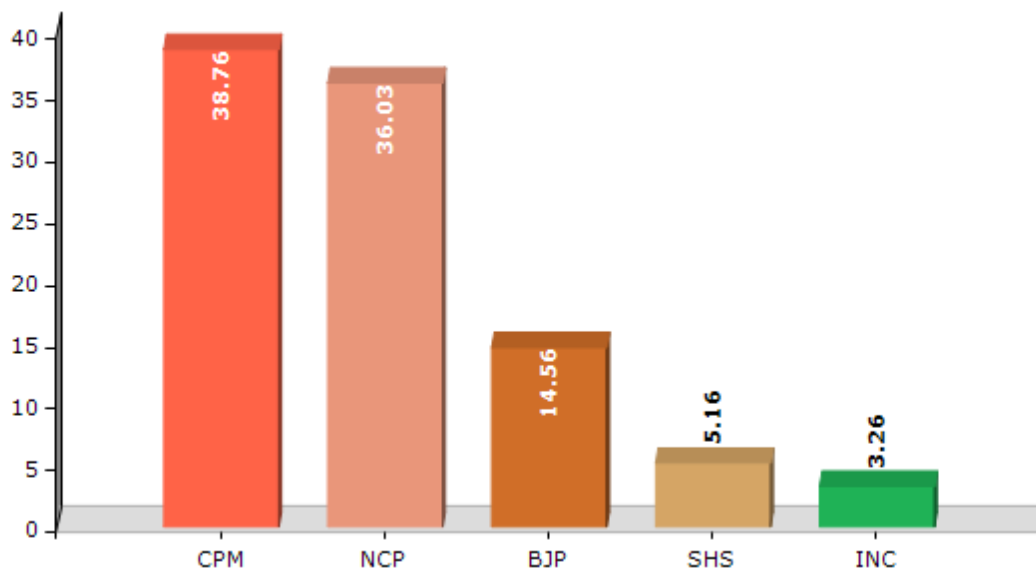
Note : AE : Assembly Election, PE : Assembly Segment of Parliamentary Election

Historical Summary Election Results

Summary Result of Assembly Election - 2014

Candidate Name	Party	Votes	Votes %
Gavit Jiva Pandu	CPM	67795	38.76
Arjun Tulshiram Pawar	NCP	63009	36.03
Gavali Yashwant Laxman	BJP	25457	14.56
Waghmare Bharat Laxman	SHS	9024	5.16
Gangurde Dhanraj Krishna	INC	5699	3.26
Khotare Tulshiram Chiman	BSP	1395	0.8
Bagul Wamanrao Kadu	IND	887	0.51
	NOTA	1623	0.93

Votes Percentage of Top Parties - 2014



Polling Station Level Election Results

Number and Name of Polling Stations (PS) (2019 AE)

Number of Polling Stations	Name of Polling Stations	Number of Polling Stations	Name of Polling Stations
1	Z.P Primary Shcool Hadkaichond East Room No.1	22	Z.P.Primary School Gopalnagar Room No.1
2	Z.P.Primary Shcool Chinchle East Side Room No.1	23	Z.P.Primary School Galbari East Side Room No.1
3	Z.P.Primary School Kelipada Room No.1	24	Z.P.Primary School Sundarbar East Side Room No.1
4	Z.P.Primary School Chandrapur Room No.1	25	Z.P.Primary School Ragatvahir West Side Room No.1
5	Z.P.Primary school, Punadnagar Room No.1	26	Z.P.Primary School Naikpada Room No.1
6	Z.P.Primary school, hanumantmal Room No.1	27	Z.P.Primary School Phanashpada East Side Room No
7	Z.P.Primary school,Kharde digar Room No.1	28	Z.P.Primary School Mandha East Room No.1
8	Z.P.Primary school,Umbargawhan Room No.1	29	Z.P.Primary School Guhi (Ja) South Side Room No.1
9	Z.P.Primary Shcool Kukudne South Side Room No.1	30	Z.P.Primary School Jambhulpada (Guhi) Room No.1
10	Z.P.Primary School Chinchpada North Side Room No.1	31	Z.P.Primary School Karanjul (K) South Side Room
11	Z.P.Primary School Bhadarpada Room No.1	32	Z.P.Primary School Borchond Room No.1
12	Z.P.Primary Shcool Pangarne East Side Room No.1	33	Z.P.Primary School Khuntvahir Room No.1
13	Z.P.Primary Shcool Pangarne East Side Room No.2	34	Z.P.Primary School Gaundagad West Side Room No.
14	Z.P.Primary School Pimpalsond West Side Room. No.1	35	Z.P.Primary School Udaldari Room No.1
15	Z.P.Primary School Chapadawadi North Side Room No	36	Z.P.Primary School Karanjul Su South Side Room N
16	Z.P.Primary school,Supale digar Room No.1	37	Z.P.Primary School Devaldari East Side Room No.1
17	Z.P.Primary school, Pratap nagarRoom No.1	38	Z.P.Primary School Walutzira Room No.1
18	Z.P.Primary school,Kathare digar Room No.1	39	Z.P.Primary School Dolhare North Side Room No.1
19	Z.P.Primary school,Bhutane digar Room No.1	40	Z.P.Primary School Subhashnagar Room No.1
20	Z.P.Primary school,Malgaw Khurd, Room No.1	41	Z.P.Primary School Rasha South Side Room No,1
21	Z.P.Primary school, Malgao Budruk, Room No.1	42	Z.P.Primary school,Ganore East Room No.2

Contd....

Polling Station Level Election Results

Polling Station-wise Votes Secured by Overall Top Five Parties in Kalwan Assembly in Assembly Election (AE) under Dindori Parliamentary Constituency in Maharashtra (2019)

Number of Polling Station	Winner - Nitin Arjun (A.T.) Pawar (NCP)	Runner-up - Com. Gavit Jiva Pandu (CPM)	3rd - Mohan Navasu Gangurde (SHS)	4th - Rajendra Laxman Thakare (MNS)	5th - Vijay (Vicky) Uttam Bhoje (BTP)	NOTA	Other	Total Votes Secured
36	93	677	23	0	3	5	0	801
37	42	620	34	0	3	3	0	702
38	33	410	7	0	0	2	0	452
39	265	139	12	0	2	2	1	421
40	223	231	18	0	0	4	1	477
41	116	378	8	0	0	1	1	504
42	347	231	9	4	6	10	3	610
43	211	413	13	2	4	5	3	651
44	262	236	12	2	4	10	3	529
45	360	290	20	4	3	5	2	684
46	290	359	16	2	48	8	5	728
47	273	166	8	1	4	6	1	459
48	413	47	8	2	38	6	2	516
49	339	284	20	7	3	24	3	680
50	153	196	7	1	1	10	1	369
51	734	86	26	7	2	21	4	880
52	477	84	12	4	7	12	8	604
53	439	157	31	5	9	13	2	656
54	376	222	28	3	2	14	3	648
55	426	212	18	2	4	8	2	672
56	425	330	19	2	3	15	4	798
57	441	273	84	3	4	4	2	811
58	107	297	17	1	2	4	0	428
59	215	404	43	0	4	7	1	674
60	232	461	68	2	0	4	1	768
61	106	393	33	0	0	4	1	537
62	180	391	31	0	1	8	5	616
63	87	452	9	2	1	7	3	561
64	200	364	63	2	0	6	1	636
65	68	236	129	1	0	2	0	436
66	66	255	21	0	2	1	0	345
67	27	232	4	0	0	1	0	264
68	72	252	41	1	0	2	1	369
69	134	244	24	1	0	9	3	415
70	142	275	237	2	1	7	2	666

Contd....

Polling Station Level Election Results

Winner, Runner-up and 3rd Party Position & Winning Margin According to Polling Stations in Kalwan Assembly in Assembly Election (AE) under Dindori Parliamentary Constituency in Maharashtra (2019)

Polling Station Number	Winner Party	Winner Votes (%)	Runner-up Party	Runner-up Votes (%)	Winning Margin Votes (%)	Third Party	Third Party Votes (%)	Other Votes (%)
71	NCP	156 (50.49)	CPM	105 (33.98)	51 (16.51)	SHS	41 (13.27)	7 (2.27)
72	NCP	535 (66.71)	CPM	228 (28.43)	307 (38.28)	SHS	15 (1.87)	24 (2.99)
73	NCP	382 (51.48)	CPM	324 (43.67)	58 (7.81)	SHS	27 (3.64)	9 (1.21)
74	NCP	583 (81.42)	CPM	110 (15.36)	473 (66.06)	SHS	15 (2.09)	8 (1.12)
75	NCP	396 (74.86)	CPM	95 (17.96)	301 (56.9)	SHS	25 (4.73)	13 (2.46)
76	NCP	340 (62.5)	CPM	143 (26.29)	197 (36.21)	SHS	41 (7.54)	20 (3.68)
77	NCP	366 (67.28)	CPM	111 (20.4)	255 (46.88)	SHS	47 (8.64)	20 (3.68)
78	NCP	445 (58.71)	CPM	245 (32.32)	200 (26.39)	SHS	38 (5.01)	30 (3.96)
79	NCP	525 (85.37)	CPM	60 (9.76)	465 (75.61)	SHS	10 (1.63)	20 (3.25)
80	NCP	379 (83.11)	CPM	53 (11.62)	326 (71.49)	SHS	7 (1.54)	17 (3.73)
81	NCP	391 (79.15)	CPM	76 (15.38)	315 (63.77)	BTP	11 (2.23)	16 (3.24)
82	NCP	304 (80.42)	CPM	66 (17.46)	238 (62.96)	SHS	5 (1.32)	3 (0.79)
83	NCP	446 (80.65)	CPM	74 (13.38)	372 (67.27)	SHS	14 (2.53)	19 (3.44)
84	NCP	412 (93.42)	CPM	13 (2.95)	399 (90.47)	IND (VKB)	6 (1.36)	10 (2.27)
85	NCP	348 (71.17)	CPM	112 (22.9)	236 (48.27)	SHS	18 (3.68)	11 (2.25)
86	CPM	338 (52.24)	NCP	236 (36.48)	102 (15.76)	SHS	70 (10.82)	3 (0.46)
87	CPM	570 (60.19)	NCP	251 (26.5)	319 (33.69)	SHS	101 (10.67)	25 (2.64)
88	CPM	178 (48.9)	NCP	167 (45.88)	11 (3.02)	SHS	16 (4.4)	3 (0.82)
89	CPM	241 (55.53)	SHS	143 (32.95)	98 (22.58)	NCP	47 (10.83)	3 (0.69)
90	NCP	226 (58.7)	CPM	136 (35.32)	90 (23.38)	SHS	18 (4.68)	5 (1.3)
91	CPM	169 (35.73)	NCP	160 (33.83)	9 (1.9)	SHS	140 (29.6)	4 (0.85)
92	SHS	332 (45.54)	CPM	216 (29.63)	116 (15.91)	NCP	147 (20.16)	34 (4.66)
93	CPM	209 (43.63)	NCP	165 (34.45)	44 (9.18)	SHS	99 (20.67)	6 (1.25)
94	CPM	264 (44.67)	SHS	175 (29.61)	89 (15.06)	NCP	140 (23.69)	12 (2.03)
95	CPM	362 (55.1)	NCP	212 (32.27)	150 (22.83)	SHS	67 (10.2)	16 (2.44)
96	CPM	210 (53.71)	NCP	111 (28.39)	99 (25.32)	SHS	60 (15.35)	10 (2.56)
97	CPM	349 (72.26)	NCP	99 (20.5)	250 (51.76)	SHS	23 (4.76)	12 (2.48)
98	NCP	241 (54.04)	CPM	166 (37.22)	75 (16.82)	SHS	34 (7.62)	5 (1.12)
99	CPM	611 (98.71)	NCP	6 (0.97)	605 (97.74)	SHS	2 (0.32)	0 (0)
100	CPM	641 (97.71)	SHS	6 (0.91)	635 (96.8)	NCP	5 (0.76)	4 (0.61)
101	CPM	547 (92.09)	NCP	29 (4.88)	518 (87.21)	SHS	16 (2.69)	2 (0.34)
102	CPM	392 (87.5)	NCP	45 (10.04)	347 (77.46)	SHS	6 (1.34)	5 (1.12)
103	CPM	278 (48.35)	NCP	276 (48)	2 (0.35)	SHS	10 (1.74)	11 (1.91)
104	CPM	282 (61.17)	NCP	156 (33.84)	126 (27.33)	SHS	14 (3.04)	9 (1.95)
105	CPM	200 (50.63)	NCP	174 (44.05)	26 (6.58)	MNS	7 (1.77)	14 (3.54)

Contd....

Socio-Economic Amenities - Rural

Access to Education Facilities

Particulars	Number of Villages (% of Population)				
	Available	Not Available	If Not Available (Distance of Nearest Facility)		
			A	B	C
Govt. Primary School	341 (100)	1 (0)	0 (0)	1 (0)	0 (0)
Private Primary School	5 (10)	337 (90)	0 (0)	0 (0)	0 (0)
Govt. Middle School	139 (62)	203 (38)	116 (24)	48 (7)	32 (5)
Private Middle School	5 (10)	337 (90)	5 (1)	1 (0)	0 (0)
Govt. Secondary School	55 (34)	287 (66)	111 (23)	80 (17)	62 (15)
Private Secondary School	15 (13)	327 (87)	16 (4)	5 (2)	1 (1)
Govt. Senior Secondary School	18 (18)	324 (82)	79 (18)	108 (28)	108 (27)
Private Senior Secondary School	6 (4)	336 (96)	10 (2)	11 (4)	4 (2)
Govt. Arts and Science Degree College	1 (5)	341 (95)	21 (6)	56 (16)	188 (47)
Private Arts and Science Degree College	1 (5)	341 (95)	7 (2)	20 (9)	49 (15)
Govt. Engineering College	0 (0)	342 (100)	1 (0)	4 (1)	215 (56)
Private Engineering College	0 (0)	342 (100)	1 (0)	6 (2)	115 (41)
Govt. Medicine College	0 (0)	342 (100)	0 (0)	0 (0)	276 (73)
Private Medicine College	0 (0)	342 (100)	0 (0)	3 (2)	63 (25)
Govt. Management Institute	0 (0)	342 (100)	0 (0)	0 (0)	276 (73)
Private Management Institute	0 (0)	342 (100)	0 (0)	3 (2)	63 (25)
Govt. Polytechnic	0 (0)	342 (100)	0 (0)	4 (2)	176 (52)
Private Polytechnic	0 (0)	342 (100)	2 (1)	3 (1)	157 (45)
Govt. Vocational Training School/ITI	3 (2)	339 (98)	19 (5)	45 (20)	272 (72)
Private Vocational Training School/ITI	0 (0)	342 (100)	0 (0)	0 (0)	3 (2)
Govt. Non Formal Training Centre	0 (0)	342 (100)	8 (2)	19 (11)	302 (81)
Private Non Formal Training Centre	0 (0)	342 (100)	0 (0)	2 (2)	11 (4)
Govt. School For Disabled	0 (0)	342 (100)	0 (0)	2 (0)	331 (95)
Private School For Disabled	0 (0)	342 (100)	0 (0)	0 (0)	9 (4)
Government Others	0 (0)	342 (100)	0 (0)	0 (0)	0 (0)
Private Others	11 (2)	331 (98)	0 (0)	0 (0)	0 (0)

Note : Distance A : Less than 5 km; B : Between 5-10 km; C : 10+ km.; Source : Data Analysis is based on 2011 Census.

DISCLAIMER

The Terms of Use and Disclaimer of Datanet India Private Limited (hereinafter referred to as "Datanet") for use of this analysis report of **Kalwan Assembly Constituency (Kalwan Vidhan Sabha)** :-

1. **Assembly Factbook™** is a Registered Trade Mark owned by Datanet.
2. All the maps are sketched and graphical representation only and have not been drawn to the scale and also not to represent the actual geographical area or boundary of the unit.
3. The data for the aforesaid analysis is based on authentic sources and has been culled from the various publications of Census, CSO and NSSO for district and block level data, various central and state government departments, Central & State Elections Commissions and the concerned Returning Officers' releases, Electoral Rolls, Election results and allied publications, internal assessment, surveys, estimates and analysis. Therefore, certain adjustment of data at micro level may have been done to arrive closer to the macro data.
4. Data have been provided on an "As Is" and "As AVAILABLE" basis
5. The colours shown in the maps or diagram and charts of a particular party, alliance or AC are indicative and do not represent them.
6. This publication which includes maps, sheets, graphs and data would be the property under copyright of Datanet only. The user may use these for its internal study, analysis and research purposes. It's public display, re-selling or any commercial uses by the user are not allowed.
7. Datanet has taken due care and caution in compilation and processing of data and allied information, but does not guarantee the accuracy, adequacy or completeness of any information/analysis and will be not responsible for any errors or omissions or for the results obtained from the use of such information/analysis.
8. All the contents for the publication have been culled from various authentic sources and Datanet reasonably believes such sources to be reliable, but does not make any representations, express or implied as to the accuracy or fitness of use of such information. The information or contents of the information/analysis do not constitute advice and should not be relied upon in making (or refraining from making) any decision. Any reliance placed upon the information provided by Datanet is the sole responsibility and strictly at the user's risk.
9. In no event will Datanet be liable for any damages (including, without limitation, damages for loss of business projects, or loss of profits) arising in contract, tort or otherwise from the use of or inability to use any of its contents, or from any action taken (or refrained from being taken) as a result of using the analysis or any of its contents. Datanet its directors, owners, editors, officials, employees, distributor and agents or any associate will not be liable for any errors in the information contained or any consequences arising from the use of the contents of the provided information/analysis.
10. If any provision of these terms and conditions is held invalid or illegal or unenforceable for any reason by any court of competent jurisdiction, such provision shall be severed and the remainder of provisions of the terms and conditions shall continue in full force and effect as if the Term of Use had been executed with the invalid, illegal or unenforceable provision eliminated.
11. If there are any discrepancies in the information provided, please bring it to attention of Datanet for suitable rectification measures.

Buy Online This Complete Book At
Datanet India eBooks Store

www.indiastatpublications.com

or go directly at

[http://www.indiastatpublications.com/
Assembly_factbook/Maharashtra/Dindori/ Kalwan](http://www.indiastatpublications.com/Assembly_factbook/Maharashtra/Dindori/Kalwan)

 **indiastat**elections

ISBN - 978-83-5293-242-9



9 789352 932429