



Maharashtra

Assembly Factbook™

Dapoli Assembly Constituency



Key Electoral Data of Dapoli
Assembly Constituency (Vidhan Sabha)

Maharashtra
Assembly FactbookTM
Dapoli Assembly Constituency



Dapoli Vidhan Sabha

Editor & Director

Dr. R.K. Thukral

Research Editor

Dr. Shafeeq Rahman

Compiled, Researched and Published by Datanet India Pvt. Ltd.

D-100, 1st Floor,

Okhla Industrial Area, Phase-I,
New Delhi- 110020.

Ph.: 91-11- 43580781-84

Email : support@indiastatpublications.com

Website : www.indiastatelections.com

Online Book Store :

www.indiastatpublications.com

Report No. : AFB/MH-263-0125

ISBN : 978-93-5293-202-3

First Edition : January, 2018

Eighth Updated Edition : January, 2025

Price : Rs.11500/-

US\$ 310

© Datanet India Pvt. Ltd.

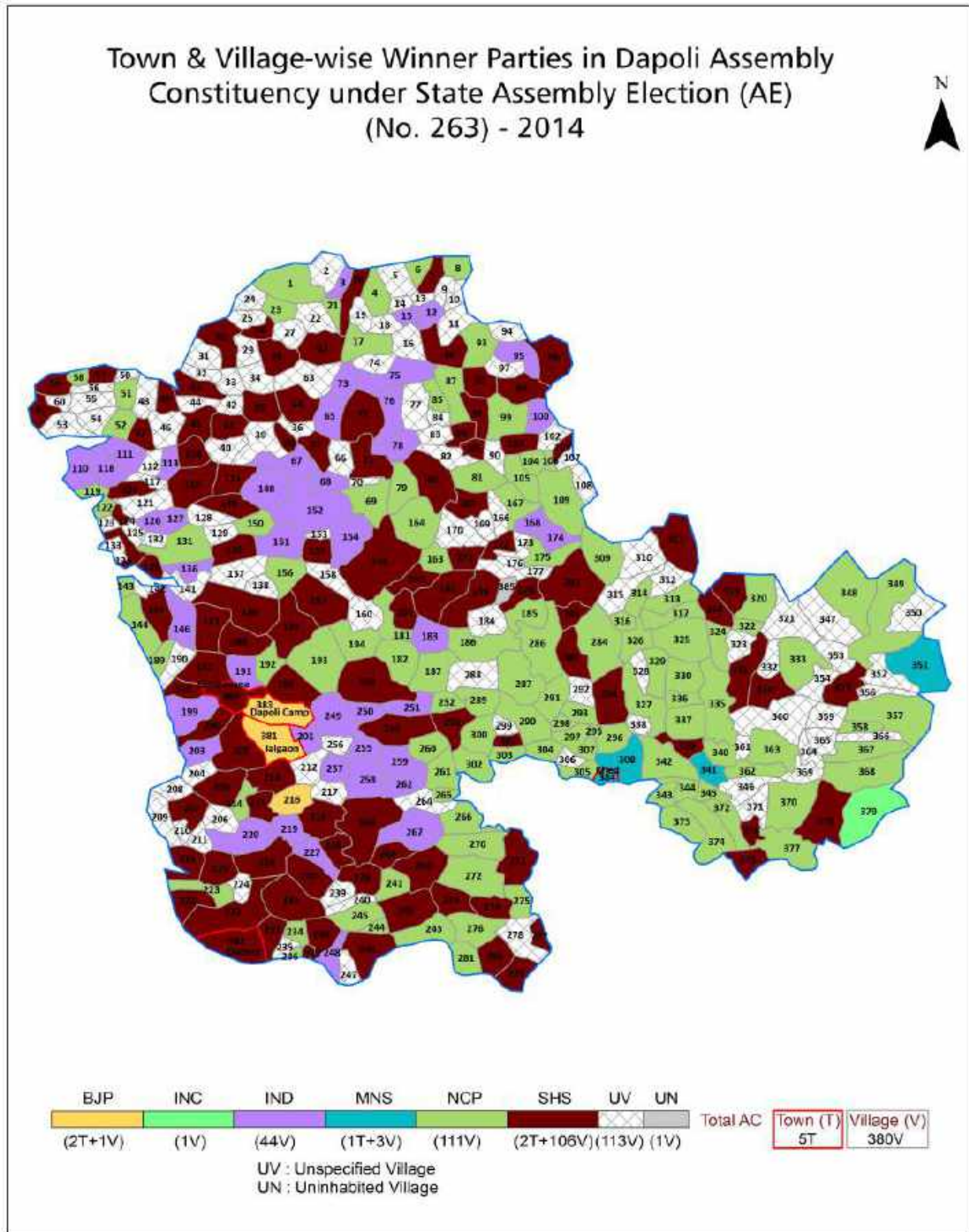
All rights reserved. No part of this book may be reproduced, stored in a retrieval system or transmitted in any form or by any means, mechanical photocopying, photographing, scanning, recording or otherwise without the prior written permission of the publisher. Please refer to Disclaimer at page no. 230 for the use of this publication.

Printed in India

Contents

No.	Particulars	Page No.
	Introduction	
1	Assembly Constituency - (Vidhan Sabha) at a Glance Features of Assembly as per Delimitation Commission of India (2008)	1-2
	Location and Political Maps	
2	Location Map Boundaries of Assembly Constituency - (Vidhan Sabha in District Boundaries of Assembly Constituency under Parliamentary Constituency - (Lok Sabha) Town & Village-wise Winner Parties- 2024-PE, 2024-AE, 2019-PE, 2019-AE, 2014-PE and 2014-AE	3-10
	Administrative Setup (2011)	
3	District Sub-district Towns Villages Inhabited Villages Uninhabited Villages Village Panchayat Intermediate Panchayat	11-30
	Demographics (2011)	
4	Population Households Rural/Urban Population Towns and Villages by Population Size Sex Ratio (Total & 0-6 Years) Religious Population Social Population Literacy Rate	31-32
	Electoral Features	
5	Important Dates of Last Elections Held Electors by Gender Service Electors Voters Voters Turnout Polling Stations & Average Number of Electors per Polling Station Electors by Age Group Present Elected Representatives	33-38
	Historical Summary Election Results	
6	Vote Share of Major Parties Winning Margin (Number & Percentage Polarity of Parties Summary Result of Assembly Segment of Parliamentary Elections 2024, 2019, 2014, 2009, 2004 and 1999 Summary Result of Assembly Elections 2024, 2019, 2014, 2009, 2004, 1999, 1995, 1990, 1985, 1980, 1978, 1972, 1967 and 1962	39-60
	Polling Station Level Election Results	
7	Name and Number of Polling Station 2024-PE, 2024-AE, 2019-PE, 2019-AE, 2014-PE and 2014-AE Polling Station-wise Electors, Voters & Voters Turnout 2024-PE, 2024-AE, 2019-PE, 2019-AE, 2014-PE and 2014-AE Polling Station wise Elections Results 2024-PE, 2024-AE, 2019-PE, 2019-AE, 2014-PE & 2014-AE	61-208
	Share of Assembly Constituency	
8	Share of Assembly Constituency - (Vidhan Sabha) in State, District and Parliamentary Constituency - (Lok Sabha)	209
	Socio-Economic Amenities (2011)	
9	Access to Administrative Units Agricultural, Manufacturing and Industrial Commodities Demographic Indicators Education Health & Manpower Drinking Water Supply Sanitation Entertainment and Recreations Infrastructure Power Food Allocation Distribution and Marketing of Agriculture Commodities Infrastructure Transport and Road Infrastructure Communication Banking and Financial Services Land Use Irrigation Source	211-225
10	Abbreviation & Sources	227-228
11	Disclaimer	230

Location & Political Map



Administrative Setup

List of Village Panchayat & Intermediate Panchayat (Block) Name - 2011

Village Name	Village Panchayat Name	Intermediate Panchayat Name
Ade	-	Dapoli
Adkhal	Adkhal	Mandangad
Adkhal	-	Dapoli
Adkhalvan	Adkhalvan	Mandangad
Agarvayangani	Agarvayangani	Dapoli
Aghari	Panchnadi	Dapoli
Ainavali	-	Khed
Ainavare	-	Khed
Aini	-	Khed
Ambadawe	Shigvan	Mandangad
Ambavali	Jawale	Mandangad
Ambavali	-	Khed
Ambavali Bk.	-	Dapoli
Ambavali Kh.	Asud	Dapoli
Ambavane Bk.	Ambavane Bk	Mandangad
Ambavane Kh.	Tulashi	Mandangad
Ambaye	-	Khed
Anjarla	-	Dapoli
Apede	-	Khed
Apti	Apti	Dapoli
Asawale	Shigavan	Mandangad
Asond	-	Dapoli
Astan	-	Khed
Asud	Asud	Dapoli
Atale	Devare	Mandangad
Atgaon	-	Dapoli
Awashi	Awashi	Dapoli
Bahiravali	Bahiravali	Mandangad
Bamanghar	Dhudere	Mandangad

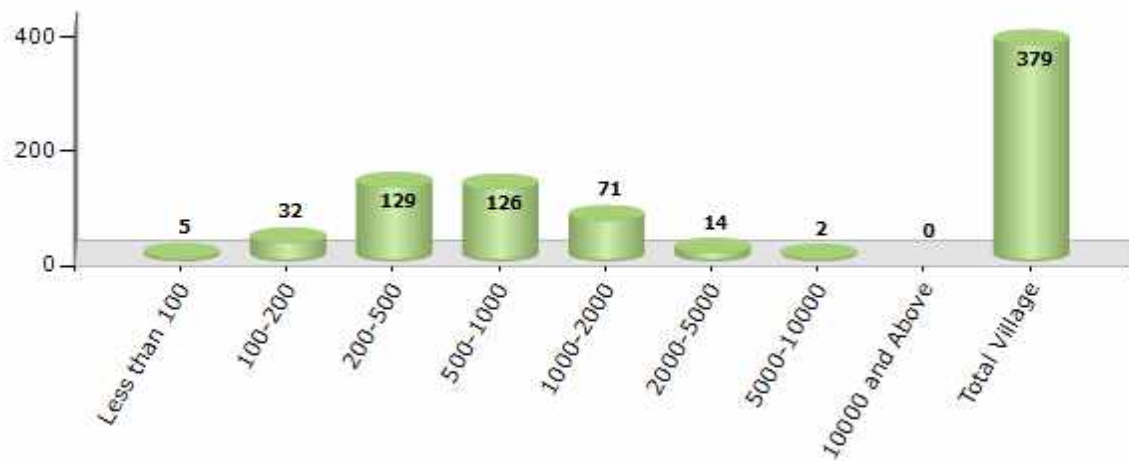
Contd....

Demographics

Number of Villages by Population Size - 2011

Less than 100	100-200	200-500	500-1000	1000-2000	2000-5000	5000-10000	10000 and Above	Total Village
5	32	129	126	71	14	2	0	379

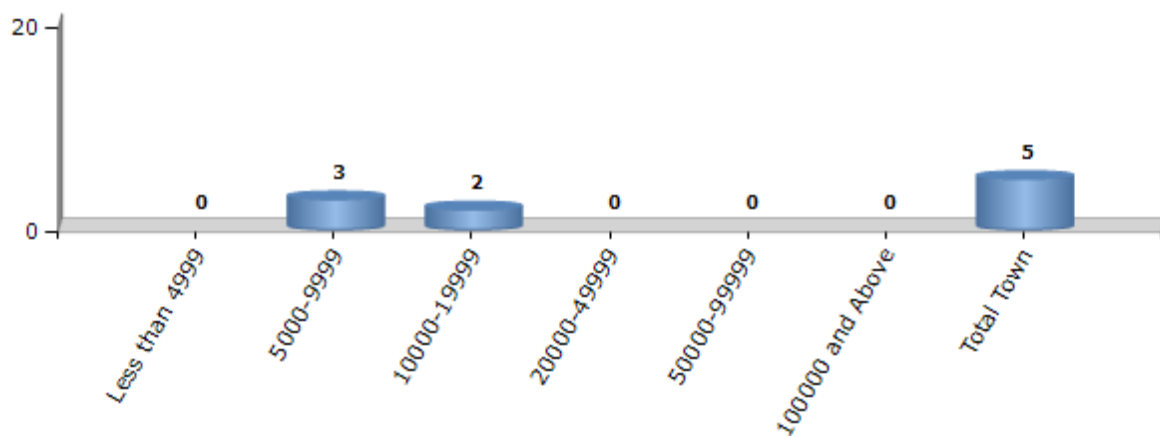
Number of Villages by Population Size - 2011



Number of Towns by Population Size - 2011

Less than 4999	5000-9999	10000-19999	20000-49999	50000-99999	100000 and Above	Total Town
0	3	2	0	0	0	5

Number of Towns by Population Size - 2011

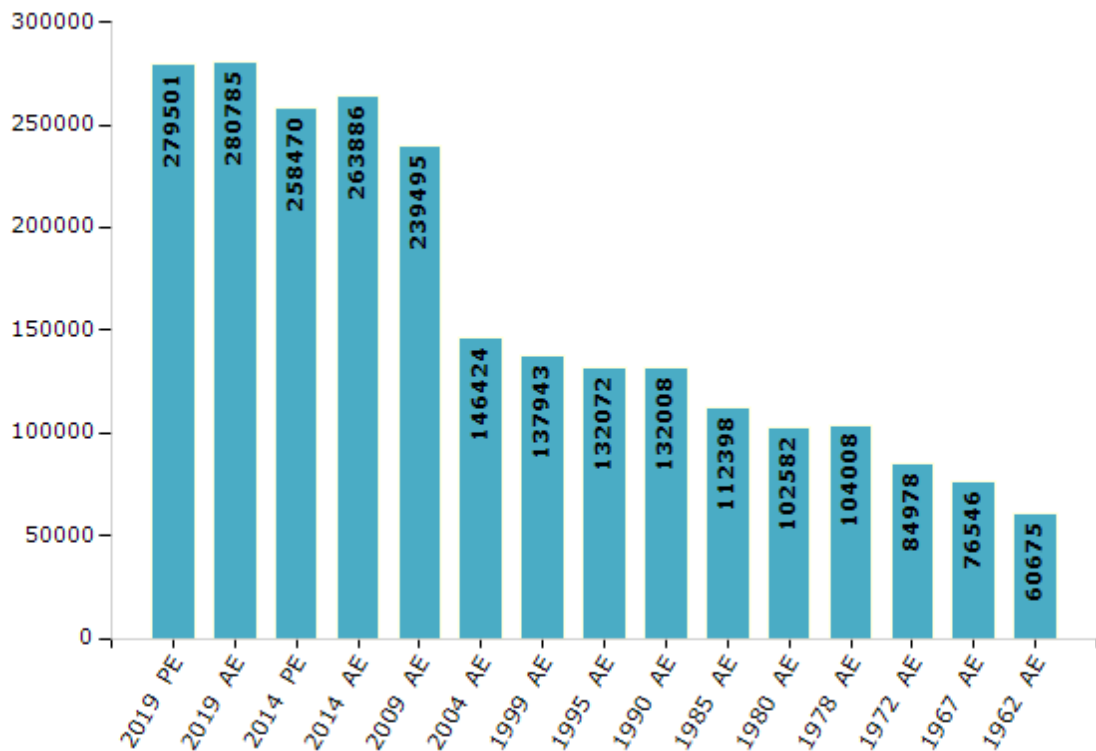


Electoral Features

Electors by Male & Female

Year	Male	Female	Others	Total	Year	Male	Female	Others	Total
2019 PE	133184	146316	1	279501	1999 AE	55057	82886	-	137943
2019 AE	133789	146995	1	280785	1995 AE	53032	79040	-	132072
2014 PE	121097	137373	0	258470	1990 AE	54294	77714	-	132008
2014 AE	123928	139958	0	263886	1985 AE	44684	67714	-	112398
2009 PE	-	-	-	-	1980 AE	39305	63277	-	102582
2009 AE	106216	133279	-	239495	1978 AE	40613	63395	-	104008
2004 PE	-	-	-	-	1972 AE	32293	52685	-	84978
2004 AE	62872	83552	-	146424	1967 AE	-	-	-	76546
1999 PE	-	-	-	-	1962 AE	-	-	-	60675

Number of Electors



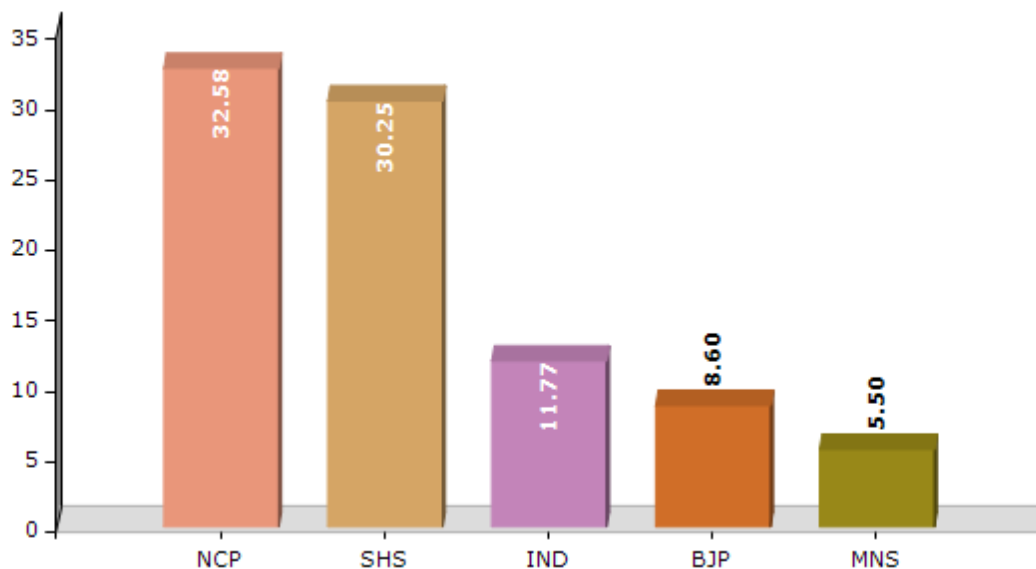
Note : AE : Assembly Election, PE : Assembly Segment of Parliamentary Election

Historical Summary Election Results

Summary Result of Assembly Election - 2014

Candidate Name	Party	Votes	Votes %
Kadam Sanjay Vasant	NCP	52907	32.58
Dalvi Suryakant Shivram	SHS	49123	30.25
Dhadave Shashikant Pandurang	IND	19106	11.77
Kedar Bhikaji Sathe	BJP	13971	8.6
Khedekar Vaibhav Sadanand	MNS	8937	5.5
Kishor Desai	IND	5272	3.25
Ziman Sujit Bhagoji	INC	4712	2.9
Khambe Dnyanadev Ramchandra	BSP	2762	1.7
Adam Abdul Rawoof Chougale	BMUP	1292	0.8
Pradip Bhaguram Gangavane	IND	948	0.58
	NOTA	3346	2.06

Votes Percentage of Top Parties - 2014



Polling Station Level Election Results

Number and Name of Polling Stations (PS) (2019 AE)

Number of Polling Stations	Name of Polling Stations	Number of Polling Stations	Name of Polling Stations
1	Z.P. Marathi Shala Ambavane Bk. Room No.2	22	Sharda Vidhya Mandir Marathi School Dhutroli Room No.2
2	Z.P. Urdu School Haveli Mohlla Kondgav Navi Emarat Room No.2	23	Z.P. Marathi School Bhingloli Purve Kadil Room No2
3	Z.P.Purn. Prathmik.Marathi School Peve No.1 Room No.1	24	Z.P. Marathi School Bhingloli Purve Kadil Room No3
4	Z.P. Pra. Shala Umbershet Purvekadil Kholi No 1	25	Z.P. Nutan Vidya Mandir Mandangad (Gandhi Chowk) Room No.2
5	Z.P. School Lokarvan Room No. 2	26	Z.P.Nutan Vidya Mandir Mandangad Room No.3
6	Z.P.Purn. Prathmik. Urdu School Mhapral Room No.2	27	Nutan Vidya Mandir Purve Kadil Room No.3
7	Z. P. School Mhapral Bandarwadi Room No.1	28	Z.P.Purn Prathmik Ghosale Room No.2
8	Z.P. School Chambharwadi Room No.2	29	Z.P.Marathi School Gothe Room No.2
9	Z.P.School Panhali Khurd Room No.1	30	Z.P. Vikas Vidya Mandir Nayane Room No.2
10	Purn.Prarthmik.Urdu School Old Building Room No. 1	31	Z.P.Aadarsh Kendra Shala Devhare Purvekadil Kholi No 2
11	Z.P.Purn. Prathmik.Marathi School Panderi (Bahiravali) Room No.2	32	Z.P. Ambavane Khurd Room No.2
12	G. P. Marathi Shala Buri	33	Azad Vidya Mandir Pale Room No.3
13	Z.P. Prathmik School Shigvan Room No.2	34	Z.P. Purn Prathmik School Mahu Room No.2
14	Pu. Pra. Marathi Shala Nigadi	35	Z.P. Pra.Marathi School Taleghar Room No.1
15	Marathi School Savari Room No.2	36	Sharada Vidyamandir Sade No 1
16	Z.P.Marathi School Adkhal Room No.1	37	Purn.Prathmik Marathi School Takede Room No.1
17	Sharda Vidhya Mandir Pat Room No.1	38	Jivan Shikshan Mandir Marathi School,Palvani South
18	Saraswati Vidya Mandir Shenale Old Building Behind Room No 1	39	Z.P. Marathi School, Nargoli Room No.1
19	Purn Prathmik Vidhyamandir Kuduk Khurd Room No.1	40	Z.P. Marathi School Tulashi No.1 Room No.3
20	Purn Prathmik Vidhyamandir Soveli Room No.1	41	Konhvali Tahmane Marathi School Konhvali Room No.1
21	Z.P.Marathi School Shirgaon Room No.2	42	Atale Vadavali Marathi School Atale Vadavali Room No.2

Contd....

Polling Station Level Election Results

Polling Station-wise Votes Secured by Overall Top Five Parties in Dapoli Assembly in Assembly Election (AE) under Raigad Parliamentary Constituency in Maharashtra (2019)

Number of Polling Station	Winner - Kadam Yogeshdada Ramdas (SHS)	Runner-up - Kadam Sanjayrao Vasant (NCP)	3rd - Marchande Pravin Sahadeo (BSP)	4th - Khopkar Santosh Dattaram (VBA)	5th - Sanjay Sambhaji Kadam (IND)	NOTA	Other	Total Votes Secured
36	173	89	0	2	4	5	2	275
37	132	150	1	20	2	0	2	307
38	428	123	5	12	2	15	1	586
39	231	57	1	5	1	7	1	303
40	331	240	2	2	2	8	2	587
41	224	74	8	6	0	9	2	323
42	225	137	1	19	0	1	10	393
43	306	194	2	1	2	7	2	514
44	429	208	8	14	1	11	4	675
45	209	444	0	2	9	7	1	672
46	389	222	1	0	4	19	3	638
47	197	312	3	10	1	2	0	525
48	362	319	1	0	0	4	0	686
49	469	204	3	1	4	20	6	707
50	198	195	1	0	3	8	2	407
51	286	296	3	11	2	8	1	607
52	71	335	2	2	6	6	0	422
53	309	205	2	7	1	5	3	532
54	263	215	5	7	4	11	0	505
55	144	238	1	0	6	2	1	392
56	274	331	8	4	1	9	2	629
57	494	350	3	18	5	8	3	881
58	429	461	3	2	3	2	5	905
59	302	247	4	6	0	6	1	566
60	296	305	0	2	1	1	2	607
61	398	335	2	0	4	15	7	761
62	100	121	3	0	2	0	1	227
63	94	45	1	0	1	7	2	150
64	162	44	2	3	0	4	0	215
65	229	308	4	0	8	2	2	553
66	107	342	4	2	6	5	4	470
67	301	435	5	0	6	14	3	764
68	314	227	0	1	3	18	8	571
69	126	98	0	0	3	6	2	235
70	229	222	4	6	7	7	1	476

Contd....

Polling Station Level Election Results

Winner, Runner-up and 3rd Party Position & Winning Margin According to Polling Stations in Dapoli Assembly in Assembly Election (AE) under Raigad Parliamentary Constituency in Maharashtra (2019)

Polling Station Number	Winner Party	Winner Votes (%)	Runner-up Party	Runner-up Votes (%)	Winning Margin Votes (%)	Third Party	Third Party Votes (%)	Other Votes (%)
71	SHS	178 (49.31)	NCP	178 (49.31)	0 (0)	IND (SSK)	1 (0.28)	4 (1.11)
72	SHS	319 (90.37)	NCP	18 (5.1)	301 (85.27)	BSP	2 (0.57)	14 (3.97)
73	SHS	343 (73.29)	NCP	108 (23.08)	235 (50.21)	IND (SSK)	3 (0.64)	14 (2.99)
74	SHS	210 (99.06)	NCP	2 (0.94)	208 (98.12)	BSP	0 (0)	0 (0)
75	NCP	172 (49.71)	SHS	161 (46.53)	11 (3.18)	IND (SSK)	5 (1.45)	8 (2.31)
76	SHS	446 (93.31)	NCP	26 (5.44)	420 (87.87)	VBA	1 (0.21)	5 (1.05)
77	SHS	251 (47.63)	NCP	250 (47.44)	1 (0.19)	BSP	11 (2.09)	15 (2.85)
78	SHS	147 (50)	NCP	135 (45.92)	12 (4.08)	IND (SSK)	2 (0.68)	10 (3.4)
79	NCP	169 (60.36)	SHS	100 (35.71)	69 (24.65)	IND (SSK)	4 (1.43)	7 (2.5)
80	NCP	234 (50.76)	SHS	207 (44.9)	27 (5.86)	BSP	17 (3.69)	3 (0.65)
81	SHS	400 (54.64)	NCP	302 (41.26)	98 (13.38)	BSP	11 (1.5)	19 (2.6)
82	SHS	159 (66.81)	NCP	67 (28.15)	92 (38.66)	VBA	5 (2.1)	7 (2.94)
83	NCP	289 (56.56)	SHS	206 (40.31)	83 (16.25)	VBA	3 (0.59)	13 (2.54)
84	SHS	211 (52.88)	NCP	175 (43.86)	36 (9.02)	IND (SSK)	3 (0.75)	10 (2.51)
85	SHS	393 (67.29)	NCP	177 (30.31)	216 (36.98)	BSP	7 (1.2)	7 (1.2)
86	NCP	121 (56.81)	SHS	57 (26.76)	64 (30.05)	BSP	23 (10.8)	12 (5.63)
87	SHS	404 (69.3)	NCP	163 (27.96)	241 (41.34)	BSP	5 (0.86)	11 (1.89)
88	NCP	424 (59.38)	SHS	246 (34.45)	178 (24.93)	VBA	7 (0.98)	37 (5.18)
89	SHS	189 (60)	NCP	117 (37.14)	72 (22.86)	IND (SSK)	1 (0.32)	8 (2.54)
90	SHS	606 (63.92)	NCP	264 (27.85)	342 (36.07)	BSP	47 (4.96)	31 (3.27)
91	NCP	211 (47.31)	SHS	187 (41.93)	24 (5.38)	BSP	23 (5.16)	25 (5.61)
92	SHS	166 (70.94)	NCP	31 (13.25)	135 (57.69)	BSP	15 (6.41)	22 (9.4)
93	SHS	233 (57.53)	NCP	150 (37.04)	83 (20.49)	IND (SSK)	6 (1.48)	16 (3.95)
94	SHS	142 (54.2)	NCP	103 (39.31)	39 (14.89)	IND (SSK)	4 (1.53)	13 (4.96)
95	SHS	245 (59.32)	NCP	147 (35.59)	98 (23.73)	IND (VDM)	3 (0.73)	18 (4.36)
96	SHS	386 (65.98)	NCP	168 (28.72)	218 (37.26)	IND (SSK)	5 (0.85)	26 (4.44)
97	SHS	81 (50.94)	NCP	69 (43.4)	12 (7.54)	IND (SSK)	3 (1.89)	6 (3.77)
98	SHS	414 (64.19)	NCP	204 (31.63)	210 (32.56)	BSP	10 (1.55)	17 (2.64)
99	SHS	256 (81.79)	BSP	32 (10.22)	224 (71.57)	NCP	18 (5.75)	7 (2.24)
100	SHS	146 (70.87)	NCP	47 (22.82)	99 (48.05)	BSP	11 (5.34)	2 (0.97)
101	SHS	178 (64.03)	NCP	72 (25.9)	106 (38.13)	BSP	18 (6.47)	10 (3.6)
102	SHS	162 (56.25)	NCP	112 (38.89)	50 (17.36)	IND (PSS)	3 (1.04)	11 (3.82)
103	SHS	314 (66.11)	NCP	136 (28.63)	178 (37.48)	BSP	11 (2.32)	14 (2.95)
104	NCP	237 (59.4)	SHS	145 (36.34)	92 (23.06)	IND (SSK)	6 (1.5)	11 (2.76)
105	SHS	292 (59.84)	NCP	155 (31.76)	137 (28.08)	VBA	10 (2.05)	31 (6.35)

Contd....

Socio-Economic Amenities - Rural

Access to Education Facilities

Particulars	Number of Villages (% of Population)				
	Available	Not Available	If Not Available (Distance of Nearest Facility)		
			A	B	C
Govt. Primary School	369 (100)	10 (0)	5 (0)	4 (0)	0 (0)
Private Primary School	16 (13)	363 (87)	0 (0)	0 (0)	0 (0)
Govt. Middle School	240 (84)	139 (16)	66 (7)	15 (1)	31 (4)
Private Middle School	9 (6)	370 (94)	16 (1)	9 (1)	1 (0)
Govt. Secondary School	55 (30)	324 (70)	84 (18)	54 (9)	54 (14)
Private Secondary School	12 (7)	367 (93)	74 (16)	35 (6)	13 (2)
Govt. Senior Secondary School	13 (12)	366 (88)	38 (10)	53 (15)	117 (26)
Private Senior Secondary School	2 (2)	377 (98)	45 (14)	49 (9)	63 (13)
Govt. Arts and Science Degree College	0 (0)	379 (100)	13 (5)	29 (7)	163 (40)
Private Arts and Science Degree College	0 (0)	379 (100)	13 (4)	33 (10)	128 (34)
Govt. Engineering College	0 (0)	379 (100)	8 (2)	15 (3)	170 (40)
Private Engineering College	0 (0)	379 (100)	5 (2)	10 (2)	171 (51)
Govt. Medicine College	0 (0)	379 (100)	3 (1)	13 (5)	158 (36)
Private Medicine College	0 (0)	379 (100)	8 (3)	9 (3)	188 (53)
Govt. Management Institute	0 (0)	379 (100)	3 (1)	13 (5)	158 (36)
Private Management Institute	0 (0)	379 (100)	8 (3)	9 (3)	188 (53)
Govt. Polytechnic	0 (0)	379 (100)	7 (4)	18 (7)	181 (44)
Private Polytechnic	0 (0)	379 (100)	8 (4)	15 (4)	150 (37)
Govt. Vocational Training School/ITI	4 (3)	375 (97)	10 (5)	47 (15)	256 (65)
Private Vocational Training School/ITI	1 (1)	378 (99)	5 (2)	6 (1)	50 (10)
Govt. Non Formal Training Centre	0 (0)	379 (100)	5 (2)	17 (5)	266 (73)
Private Non Formal Training Centre	0 (0)	379 (100)	7 (2)	13 (3)	71 (14)
Govt. School For Disabled	1 (1)	378 (99)	11 (5)	24 (7)	204 (53)
Private School For Disabled	0 (0)	379 (100)	8 (4)	19 (7)	112 (24)
Government Others	0 (0)	379 (100)	0 (0)	0 (0)	0 (0)
Private Others	22 (6)	357 (94)	0 (0)	0 (0)	0 (0)

Note : Distance A : Less than 5 km; B : Between 5-10 km; C : 10+ km.; Source : Data Analysis is based on 2011 Census.

DISCLAIMER

The Terms of Use and Disclaimer of Datanet India Private Limited (hereinafter referred to as "Datanet") for use of this analysis report of **Dapoli Assembly Constituency (Dapoli Vidhan Sabha)** :-

1. **Assembly Factbook™** is a Registered Trade Mark owned by Datanet.
2. All the maps are sketched and graphical representation only and have not been drawn to the scale and also not to represent the actual geographical area or boundary of the unit.
3. The data for the aforesaid analysis is based on authentic sources and has been culled from the various publications of Census, CSO and NSSO for district and block level data, various central and state government departments, Central & State Elections Commissions and the concerned Returning Officers' releases, Electoral Rolls, Election results and allied publications, internal assessment, surveys, estimates and analysis. Therefore, certain adjustment of data at micro level may have been done to arrive closer to the macro data.
4. Data have been provided on an "As Is" and "As AVAILABLE" basis
5. The colours shown in the maps or diagram and charts of a particular party, alliance or AC are indicative and do not represent them.
6. This publication which includes maps, sheets, graphs and data would be the property under copyright of Datanet only. The user may use these for its internal study, analysis and research purposes. It's public display, re-selling or any commercial uses by the user are not allowed.
7. Datanet has taken due care and caution in compilation and processing of data and allied information, but does not guarantee the accuracy, adequacy or completeness of any information/analysis and will be not responsible for any errors or omissions or for the results obtained from the use of such information/analysis.
8. All the contents for the publication have been culled from various authentic sources and Datanet reasonably believes such sources to be reliable, but does not make any representations, express or implied as to the accuracy or fitness of use of such information. The information or contents of the information/analysis do not constitute advice and should not be relied upon in making (or refraining from making) any decision. Any reliance placed upon the information provided by Datanet is the sole responsibility and strictly at the user's risk.
9. In no event will Datanet be liable for any damages (including, without limitation, damages for loss of business projects, or loss of profits) arising in contract, tort or otherwise from the use of or inability to use any of its contents, or from any action taken (or refrained from being taken) as a result of using the analysis or any of its contents. Datanet its directors, owners, editors, officials, employees, distributor and agents or any associate will not be liable for any errors in the information contained or any consequences arising from the use of the contents of the provided information/analysis.
10. If any provision of these terms and conditions is held invalid or illegal or unenforceable for any reason by any court of competent jurisdiction, such provision shall be severed and the remainder of provisions of the terms and conditions shall continue in full force and effect as if the Term of Use had been executed with the invalid, illegal or unenforceable provision eliminated.
11. If there are any discrepancies in the information provided, please bring it to attention of Datanet for suitable rectification measures.

**Buy Online This Complete Book At
Datanet India eBooks Store**

www.indiastatpublications.com

or go directly at

[http://www.indiastatpublications.com/
Assembly_factbook/Maharashtra/Raigad/ Dapoli](http://www.indiastatpublications.com/Assembly_factbook/Maharashtra/Raigad/Dapoli)



i **india**stat**elections**

ISBN : 978-93-5293-202-3



9 789352 932023