



Maharashtra

# Assembly Factbook™

Pen Assembly Constituency



Key Electoral Data of Pen  
Assembly Constituency (Vidhan Sabha)

Maharashtra

# Assembly Factbook™

Pen Assembly Constituency



Pen Vidhan Sabha

## **Editor & Director**

Dr. R.K. Thukral

## **Research Editor**

Dr. Shafeeq Rahman

## **Compiled, Researched and Published by Datanet India Pvt. Ltd.**

D-100, 1st Floor,

Okhla Industrial Area, Phase-I,  
New Delhi- 110020.

Ph.: 91-11- 43580781-84

Email : support@indiastatpublications.com

Website : www.indiastatelections.com

## **Online Book Store :**

www.indiastatpublications.com

**Report No. :** AFB/MH-191-0125

**ISBN :** 978-93-5293-321-1

**First Edition :** January, 2018

**Eighth Updated Edition :** January, 2025

**Price :** Rs.11500/-

US\$ 310

**© Datanet India Pvt. Ltd.**

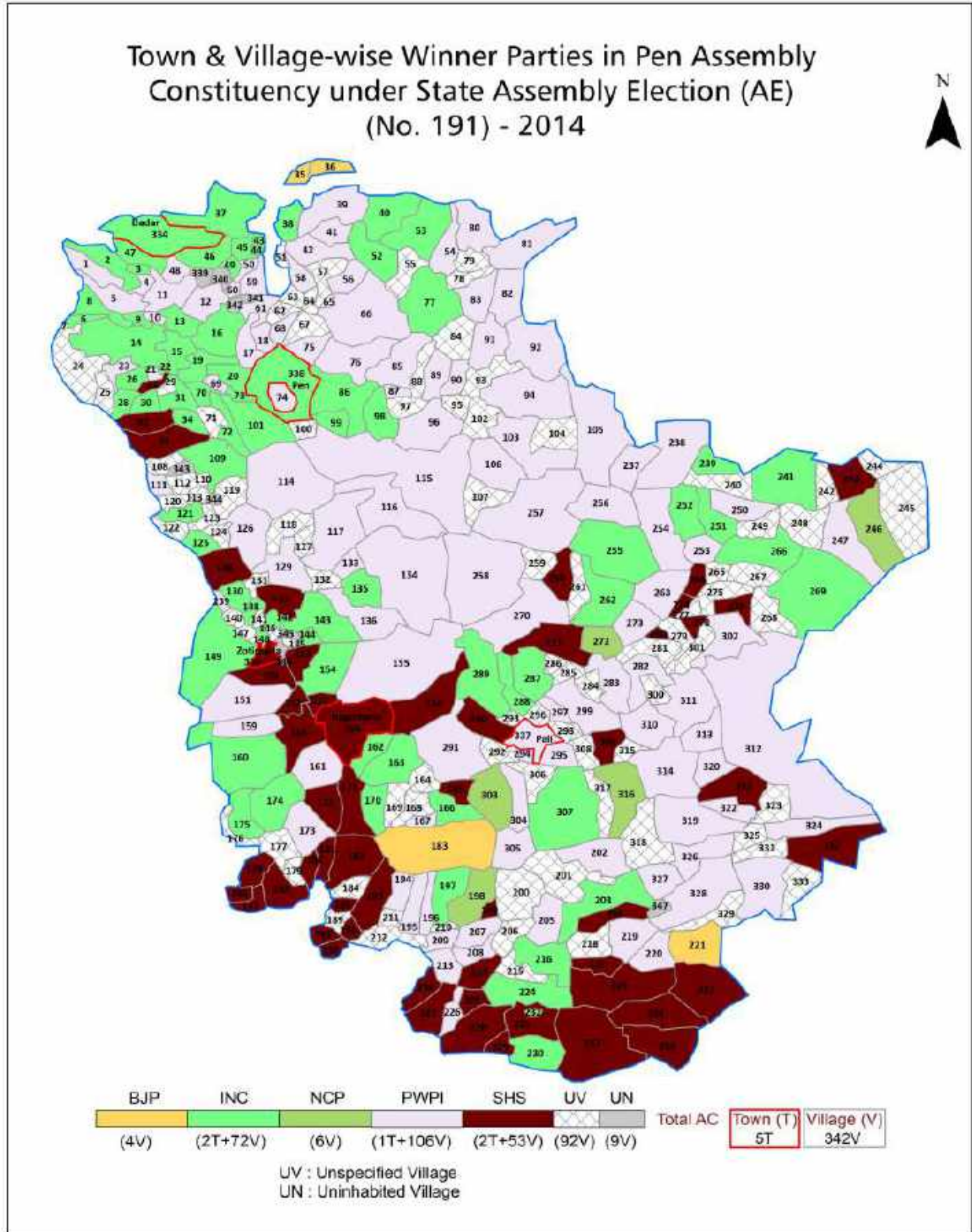
All rights reserved. No part of this book may be reproduced, stored in a retrieval system or transmitted in any form or by any means, mechanical photocopying, photographing, scanning, recording or otherwise without the prior written permission of the publisher. Please refer to Disclaimer at page no. 229 for the use of this publication.

Printed in India

No.	Particulars	Page No.
	<b>Introduction</b>	
1	Assembly Constituency - (Vidhan Sabha) at a Glance   Features of Assembly as per Delimitation Commission of India (2008)	1-2
	<b>Location and Political Maps</b>	
2	Location Map   Boundaries of Assembly Constituency - (Vidhan Sabha in District   Boundaries of Assembly Constituency under Parliamentary Constituency - (Lok Sabha)   Town & Village-wise Winner Parties- 2024-PE, 2024-AE, 2019-PE, 2019-AE, 2014-PE and 2014-AE	3-10
	<b>Administrative Setup (2011)</b>	
3	District   Sub-district   Towns   Villages   Inhabited Villages   Uninhabited Villages   Village Panchayat   Intermediate Panchayat	11-27
	<b>Demographics (2011)</b>	
4	Population   Households   Rural/Urban Population   Towns and Villages by Population Size   Sex Ratio (Total & 0-6 Years)   Religious Population   Social Population   Literacy Rate	28-29
	<b>Electoral Features</b>	
5	Important Dates of Last Elections Held   Electors by Gender   Service Electors   Voters   Voters Turnout   Polling Stations & Average Number of Electors per Polling Station   Electors by Age Group   Present Elected Representatives	30-35
	<b>Historical Summary Election Results</b>	
6	Vote Share of Major Parties   Winning Margin (Number & Percentage   Polarity of Parties   Summary Result of Assembly Segment of Parliamentary Elections 2024, 2019, 2014, 2009, 2004 and 1999   Summary Result of Assembly Elections 2024, 2019, 2014, 2009, 2004, 1999, 1995, 1990, 1985, 1980, 1978, 1972, 1967 and 1962	36-57
	<b>Polling Station Level Election Results</b>	
7	Name and Number of Polling Station 2024-PE, 2024-AE, 2019-PE, 2019-AE, 2014-PE and 2014-AE   Polling Station-wise Electors, Voters & Voters Turnout 2024-PE, 2024-AE, 2019-PE, 2019-AE, 2014-PE and 2014-AE   Polling Station wise Elections Results 2024-PE, 2024-AE, 2019-PE, 2019-AE, 2014-PE & 2014-AE	58-207
	<b>Share of Assembly Constituency</b>	
8	Share of Assembly Constituency - (Vidhan Sabha) in State, District and Parliamentary Constituency - (Lok Sabha)	208
	<b>Socio-Economic Amenities (2011)</b>	
9	Access to Administrative Units   Agricultural, Manufacturing and Industrial Commodities   Demographic Indicators   Education   Health & Manpower   Drinking Water Supply   Sanitation   Entertainment and Recreations Infrastructure   Power   Food Allocation Distribution and Marketing of Agriculture Commodities Infrastructure   Transport and Road Infrastructure   Communication   Banking and Financial Services   Land Use   Irrigation Source	210-224
10	<b>Abbreviation &amp; Sources</b>	226-227
11	<b>Disclaimer</b>	229



Location & Political Map



## Administrative Setup

### List of Village Panchayat & Intermediate Panchayat (Block) Name - 2011

Village Name	Village Panchayat Name	Intermediate Panchayat Name
Adharne	-	Pen
Adiwasiwadi [Dhankanhe]	Devakanhe	Roha
Adiwasiwadi [Kolad]	Kolad	Roha
Adulse	Adsule	Sudhagad
Aghai	-	Pen
Ainghar	Ainghar	Roha
Ainwahal	Ainwahal	Roha
Ambeghar	Ambeghar	Pen
Ambewadi	Ambewadi	Roha
Ambivali	Ambivali	Pen
Ambivali	Kudali	Roha
Ambivali	Bharje	Sudhagad
Ambole	Rasal	Sudhagad
Amdoshi	Wangani	Roha
Amnori	Dhigaon	Sudhagad
Amtem	Amtem	Pen
Antore	-	Pen
Apatwane	Aptavane	Sudhagad
Asare	Navghar	Sudhagad
Ashte	Balavali	Pen
Atiwali	Shihu	Pen
Atone	-	Sudhagad
Avandhe	Waghoshi	Sudhagad
Bahe	Devakanhe	Roha
Bahiramwatak	-	Pen
Balap	Kumbharshet	Sudhagad
Balawali	Balavali	Pen
Balhe	Chinchavali Tarf Atone	Roha
Balsai	Ainghar	Roha

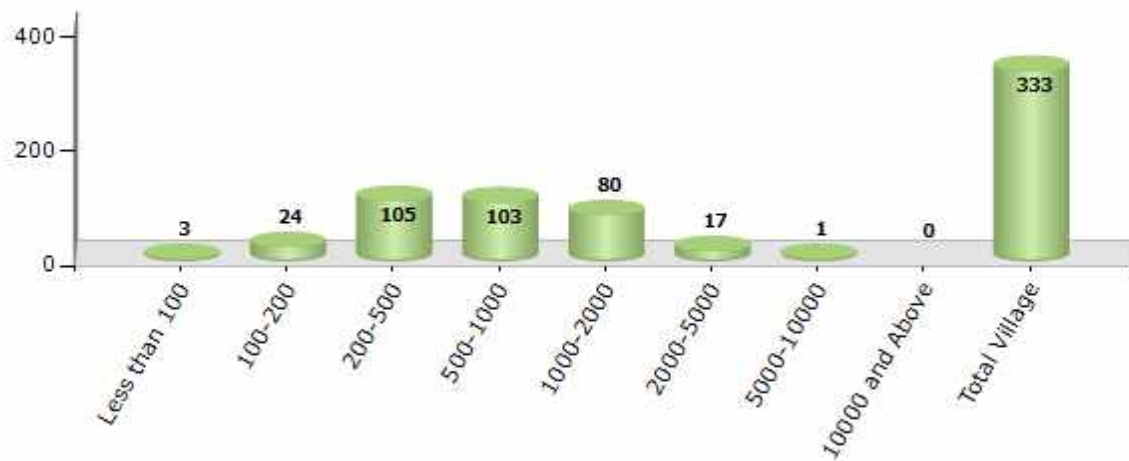
Contd....

## Demographics

### Number of Villages by Population Size - 2011

Less than 100	100-200	200-500	500-1000	1000-2000	2000-5000	5000-10000	10000 and Above	Total Village
3	24	105	103	80	17	1	0	333

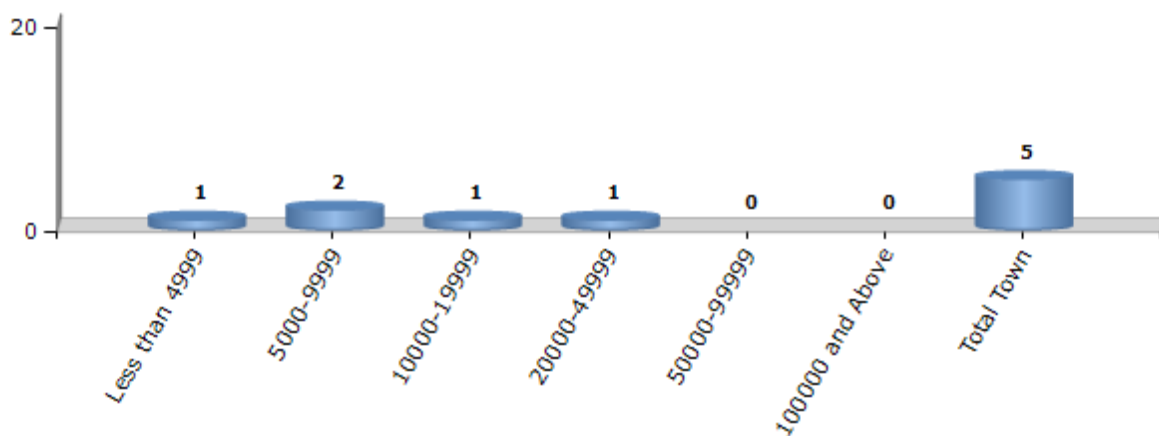
Number of Villages by Population Size - 2011



### Number of Towns by Population Size - 2011

Less than 4999	5000-9999	10000-19999	20000-49999	50000-99999	100000 and Above	Total Town
1	2	1	1	0	0	5

Number of Towns by Population Size - 2011

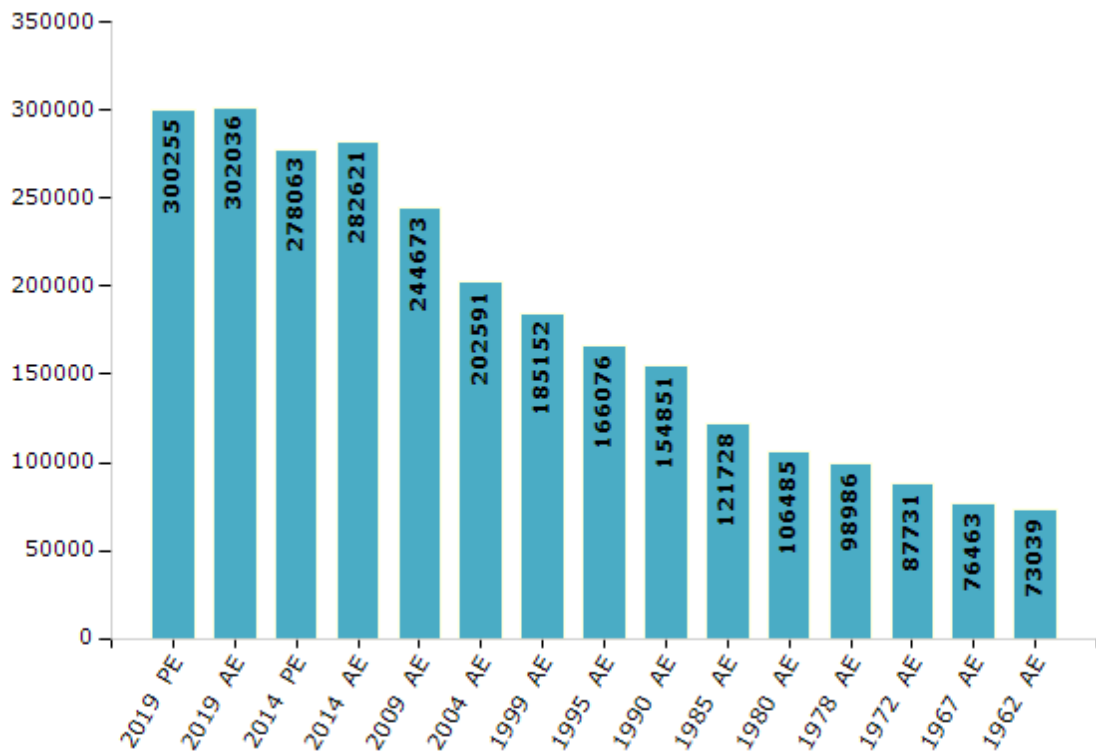


## Electoral Features

### Electors by Male & Female

Year	Male	Female	Others	Total	Year	Male	Female	Others	Total
2019 PE	151590	148665	0	300255	1999 AE	95282	89870	-	185152
2019 AE	152297	149739	0	302036	1995 AE	84237	81839	-	166076
2014 PE	142121	135942	0	278063	1990 AE	79145	75706	-	154851
2014 AE	144098	138523	0	282621	1985 AE	61131	60597	-	121728
2009 PE	-	-	-	-	1980 AE	52652	53833	-	106485
2009 AE	124626	120047	-	244673	1978 AE	48927	50059	-	98986
2004 PE	-	-	-	-	1972 AE	44258	43473	-	87731
2004 AE	103346	99245	-	202591	1967 AE	-	-	-	76463
1999 PE	-	-	-	-	1962 AE	-	-	-	73039

Number of Electors



Note : AE : Assembly Election, PE : Assembly Segment of Parliamentary Election

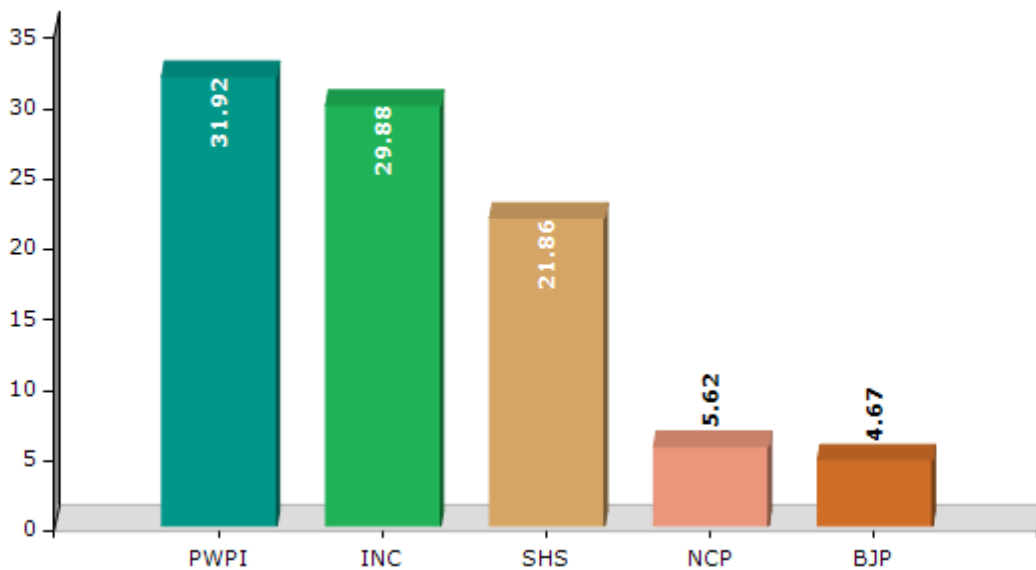


## Historical Summary Election Results

### Summary Result of Assembly Election - 2014

Candidate Name	Party	Votes	Votes %
Dhairyasheel Mohan Patil	PWPI	64616	31.92
Ravisheth Patil	INC	60496	29.88
Kishor Otarmal Jain	SHS	44251	21.86
Jambhale Sanjay Janardan	NCP	11387	5.62
Gharat Ramsheth Mangalya	BJP	9452	4.67
Govardhan Polsani	MNS	3151	1.56
Ankush Kisan Tadkar	IND	1937	0.96
Pravin Gopinath Satane	BSP	1176	0.58
Ravindra Baliram Patil	JD(U)	1174	0.58
Sandeepbhai Parte	HJP	958	0.47
Ballal Govind Puranik	IND	948	0.47
	NOTA	2891	1.43

Votes Percentage of Top Parties - 2014



## Polling Station Level Election Results

### Number and Name of Polling Stations (PS) (2019 AE)

Number of Polling Stations	Name of Polling Stations	Number of Polling Stations	Name of Polling Stations
1	Ra. Z. P. Pra. Marathi School Dushmi	22	Ra. Z. P. Pra. Marathi School Dadar (South Side First Room )
2	Ra. Z. P. Pra. Marathi School Kharapada (North Side Room )	23	Ra. Z. P. Pra. Marathi School Dadar (South Side Second Room )
3	Ra. Z. P. Pra. Marathi School Kharapada (South Side Room )	24	Sudhagad Education Society Vidyamandir Dadar (East Side Room)
4	Ra. Z. P. Pra. Marathi School Kharoshi (East Side Room )	25	Sudhagad Education Society Vidyamandir Dadar (West Side Room )
5	Ra. Z. P. Pra. Marathi School Kharoshi (West Side Room )	26	Ra. Z. P. Pra. Marathi School Dadar (North Side Second Room )
6	Ra. Z. P. Pra. Marathi School Jambhulavadi (Mohili Inam )	27	Ra. Z. P. Pra. Marathi School Dadar (South Side Second Room )
7	Ra. Z. P. Pra. Marathi School Ghote	28	Ra. Z. P. Pra. Marathi School Hanumanapada
8	Ra. Z. P. Pra. Marathi School Javali	29	Ra. Z. P. Pra. Marathi School Davre
9	Ra. Z. P. Pra. Marathi School Nifad	30	Ra. Z. P. Pra. Marathi School Kopar Room No.1
10	Ra. Z. P. Pra. Marathi School Karodi	31	Ra. Z. P. Pra. Marathi School Kopar Room No.2
11	Ra. Z. P. Pra. Marathi School Jite (East Side First Room )	32	Ra. Z. P. Pra. Marathi School Durashet
12	Ra. Z. P. Pra. Marathi School Jite (East Side Second Room )	33	Ra. Z. P. Pra. Marathi School Nidhavali
13	Ra. Z. P. Pra. Marathi School Jite (South Side Room )	34	Ra. Z. P. Pra. Marathi School Balwali
14	Ra. Z. P. Pra. Marathi School Jite (North Side Room )	35	Ra. Z. P. Pra. Marathi School Balwali (Old Building Room No 2)
15	Su A So. Paliche Sarwajanik Mad. Vidya Mandir Rave Pashimekadil Dusari Kholi	36	Ra. Z. P. Pra. Marathi School Tambadashet
16	Su A So. Paliche Sarwajanik Mad. Vidya Mandir Rave South Side 1	37	Ra. Z. P. Pra. Marathi School Sonakhar
17	Su A So. Paliche Sarwajanik Mad. Vidya Mandir Rave South Side 2	38	Ra. Z. P. Pra. Marathi School Urnoli
18	Su A So. Paliche Sarwajanik Mad. Vidya Mandir Rave South Side 3	39	Ra. Z. P. Pra. Marathi School Bhal
19	Su A So. Paliche Sarwajanik Mad. Vidya Mandir Rave South Side 4	40	Ra. Z. P. Pra. Marathi School Vitthalavadi
20	Su A So. Paliche Sarwajanik Mad. Vidya Mandir Rave (Uttarekadil Dusari Kholi )	41	Ra. Z. P. Pra. Marathi School Johe (East Side )
21	Ra. Z. P. Pra. Marathi School Dadar (North Side First Room )	42	Ra. Z. P. Pra. Marathi School Mungoshi

Contd....

## Polling Station Level Election Results

### Polling Station-wise Votes Secured by Overall Top Five Parties in Pen Assembly in Assembly Election (AE) under Raigad Parliamentary Constituency in Maharashtra (2019)

Number of Polling Station	Winner - Ravisheth Patil (BJP)	Runner-up - Dhairyashil Mohan Patil (PWPI)	3rd - Nanda Mhatre (INC)	4th - Ravi Patil (IND)	5th - Gharat Ramsheth Manglya (IND)	NOTA	Other	Total Votes Secured
36	530	437	7	4	3	5	19	1005
37	591	245	5	9	0	8	7	865
38	307	202	12	1	0	2	6	530
39	502	67	3	6	1	3	7	589
40	693	109	7	5	2	7	10	833
41	519	259	35	3	2	3	10	831
42	196	432	5	2	10	11	39	695
43	205	365	1	5	7	10	37	630
44	214	250	11	1	2	1	4	483
45	257	187	3	5	0	2	15	469
46	309	205	6	3	0	5	8	536
47	198	166	2	1	1	6	2	376
48	652	193	1	7	0	1	9	863
49	382	108	7	2	4	2	1	506
50	433	182	3	2	0	7	10	637
51	331	189	2	4	9	3	5	543
52	339	265	1	0	1	3	14	623
53	203	104	1	2	1	7	5	323
54	305	290	5	3	1	4	10	618
55	383	239	3	10	5	3	12	655
56	374	172	8	7	2	3	13	579
57	335	201	5	6	2	5	11	565
58	317	250	6	2	4	2	9	590
59	309	182	4	5	1	10	10	521
60	344	269	14	0	1	3	5	636
61	291	279	15	2	3	5	12	607
62	396	221	4	6	5	4	11	647
63	89	670	7	9	20	5	47	847
64	203	313	0	1	3	2	10	532
65	70	301	6	5	7	2	32	423
66	483	262	0	3	4	2	15	769
67	169	359	3	5	1	6	24	567
68	511	377	15	0	5	10	20	938
69	432	379	1	0	3	6	20	841
70	294	160	55	3	2	12	5	531

Contd....

## Polling Station Level Election Results

### Winner, Runner-up and 3rd Party Position & Winning Margin According to Polling Stations in Pen Assembly in Assembly Election (AE) under Raigad Parliamentary Constituency in Maharashtra (2019)

Polling Station Number	Winner Party	Winner Votes (%)	Runner-up Party	Runner-up Votes (%)	Winning Margin Votes (%)	Third Party	Third Party Votes (%)	Other Votes (%)
71	BJP	292 (52.9)	PWPI	203 (36.78)	89 (16.12)	INC	33 (5.98)	24 (4.35)
72	BJP	426 (67.73)	PWPI	193 (30.68)	233 (37.05)	IND (MRP)	2 (0.32)	8 (1.27)
73	BJP	370 (65.26)	PWPI	178 (31.39)	192 (33.87)	INC	10 (1.76)	9 (1.59)
74	BJP	434 (70.23)	PWPI	156 (25.24)	278 (44.99)	INC	15 (2.43)	13 (2.1)
75	PWPI	402 (57.18)	BJP	277 (39.4)	125 (17.78)	VBA	7 (1)	17 (2.42)
76	PWPI	433 (60.22)	BJP	245 (34.08)	188 (26.14)	IND (RGG)	8 (1.11)	33 (4.59)
77	PWPI	254 (53.47)	BJP	182 (38.32)	72 (15.15)	VBA	7 (1.47)	32 (6.74)
78	BJP	428 (67.83)	PWPI	159 (25.2)	269 (42.63)	IND (RP)	12 (1.9)	32 (5.07)
79	PWPI	627 (69.74)	BJP	219 (24.36)	408 (45.38)	VBA	13 (1.45)	40 (4.45)
80	PWPI	684 (71.25)	BJP	225 (23.44)	459 (47.81)	INC	9 (0.94)	42 (4.38)
81	PWPI	434 (55.78)	BJP	321 (41.26)	113 (14.52)	IND (GRM)	5 (0.64)	18 (2.31)
82	PWPI	418 (75.32)	BJP	79 (14.23)	339 (61.09)	IND (MRP)	13 (2.34)	45 (8.11)
83	PWPI	379 (73.03)	BJP	108 (20.81)	271 (52.22)	IND (RP)	7 (1.35)	25 (4.82)
84	BJP	458 (50.66)	PWPI	404 (44.69)	54 (5.97)	IND (MRP)	7 (0.77)	35 (3.87)
85	BJP	501 (52.79)	PWPI	416 (43.84)	85 (8.95)	VBA	5 (0.53)	27 (2.85)
86	BJP	485 (72.71)	PWPI	146 (21.89)	339 (50.82)	INC	8 (1.2)	28 (4.2)
87	BJP	299 (67.04)	PWPI	122 (27.35)	177 (39.69)	INC	7 (1.57)	18 (4.04)
88	BJP	413 (71.45)	PWPI	128 (22.15)	285 (49.3)	INC	11 (1.9)	26 (4.5)
89	BJP	269 (60.86)	PWPI	152 (34.39)	117 (26.47)	INC	4 (0.9)	17 (3.85)
90	BJP	573 (66.55)	PWPI	228 (26.48)	345 (40.07)	IND (GRM)	8 (0.93)	52 (6.04)
91	BJP	282 (54.76)	PWPI	214 (41.55)	68 (13.21)	INC	3 (0.58)	16 (3.11)
92	BJP	421 (65.07)	PWPI	205 (31.68)	216 (33.39)	INC	4 (0.62)	17 (2.63)
93	BJP	608 (68.09)	PWPI	255 (28.56)	353 (39.53)	INC	8 (0.9)	22 (2.46)
94	BJP	338 (59.82)	PWPI	198 (35.04)	140 (24.78)	INC	9 (1.59)	20 (3.54)
95	BJP	235 (49.27)	PWPI	206 (43.19)	29 (6.08)	VBA	9 (1.89)	27 (5.66)
96	BJP	266 (74.51)	PWPI	70 (19.61)	196 (54.9)	INC	9 (2.52)	12 (3.36)
97	BJP	378 (57.45)	PWPI	261 (39.67)	117 (17.78)	INC	6 (0.91)	13 (1.98)
98	BJP	550 (69.89)	PWPI	204 (25.92)	346 (43.97)	INC	11 (1.4)	22 (2.8)
99	BJP	256 (61.1)	PWPI	142 (33.89)	114 (27.21)	INC	8 (1.91)	13 (3.1)
100	BJP	554 (59.57)	PWPI	326 (35.05)	228 (24.52)	INC	13 (1.4)	37 (3.98)
101	BJP	328 (70.24)	PWPI	110 (23.55)	218 (46.69)	INC	12 (2.57)	17 (3.64)
102	BJP	524 (62.01)	PWPI	275 (32.54)	249 (29.47)	INC	10 (1.18)	36 (4.26)
103	BJP	530 (61.92)	PWPI	256 (29.91)	274 (32.01)	INC	24 (2.8)	46 (5.37)
104	BJP	493 (70.43)	PWPI	171 (24.43)	322 (46)	INC	8 (1.14)	28 (4)
105	BJP	597 (62.45)	PWPI	272 (28.45)	325 (34)	VBA	29 (3.03)	58 (6.07)

Contd....

## Socio-Economic Amenities - Rural

### Access to Education Facilities

Particulars	Number of Villages (% of Population)				
	Available	Not Available	If Not Available (Distance of Nearest Facility)		
			A	B	C
Govt. Primary School	321 (99)	12 (1)	8 (1)	3 (0)	1 (0)
Private Primary School	12 (9)	321 (91)	0 (0)	0 (0)	0 (0)
Govt. Middle School	156 (70)	177 (30)	98 (17)	17 (2)	44 (8)
Private Middle School	8 (6)	325 (94)	12 (2)	5 (0)	0 (0)
Govt. Secondary School	38 (26)	295 (74)	103 (23)	37 (6)	85 (23)
Private Secondary School	18 (10)	315 (90)	41 (10)	9 (2)	3 (0)
Govt. Senior Secondary School	8 (8)	325 (92)	63 (17)	86 (26)	100 (26)
Private Senior Secondary School	2 (1)	331 (99)	23 (8)	27 (7)	24 (6)
Govt. Arts and Science Degree College	0 (0)	333 (100)	25 (9)	77 (27)	149 (42)
Private Arts and Science Degree College	0 (0)	333 (100)	21 (7)	25 (7)	36 (8)
Govt. Engineering College	0 (0)	333 (100)	16 (5)	44 (18)	111 (28)
Private Engineering College	0 (0)	333 (100)	5 (2)	3 (1)	154 (45)
Govt. Medicine College	0 (0)	333 (100)	11 (4)	15 (5)	245 (72)
Private Medicine College	0 (0)	333 (100)	1 (1)	0 (0)	61 (18)
Govt. Management Institute	0 (0)	333 (100)	11 (4)	15 (5)	245 (72)
Private Management Institute	0 (0)	333 (100)	1 (1)	0 (0)	61 (18)
Govt. Polytechnic	0 (0)	333 (100)	19 (6)	50 (19)	241 (67)
Private Polytechnic	0 (0)	333 (100)	4 (1)	6 (2)	13 (4)
Govt. Vocational Training School/ITI	2 (1)	331 (99)	30 (10)	63 (22)	221 (65)
Private Vocational Training School/ITI	0 (0)	333 (100)	5 (1)	1 (0)	11 (2)
Govt. Non Formal Training Centre	0 (0)	333 (100)	17 (5)	24 (7)	261 (79)
Private Non Formal Training Centre	0 (0)	333 (100)	4 (1)	3 (2)	24 (5)
Govt. School For Disabled	0 (0)	333 (100)	6 (2)	15 (10)	270 (75)
Private School For Disabled	0 (0)	333 (100)	3 (2)	10 (4)	29 (7)
Government Others	0 (0)	333 (100)	0 (0)	0 (0)	0 (0)
Private Others	41 (10)	292 (90)	0 (0)	0 (0)	0 (0)

Note : Distance A : Less than 5 km; B : Between 5-10 km; C : 10+ km.; Source : Data Analysis is based on 2011 Census.



## DISCLAIMER

The Terms of Use and Disclaimer of Datanet India Private Limited (hereinafter referred to as "Datanet") for use of this analysis report of **Pen Assembly Constituency (Pen Vidhan Sabha) :-**

1. **Assembly Factbook™** is a Registered Trade Mark owned by Datanet.
2. All the maps are sketched and graphical representation only and have not been drawn to the scale and also not to represent the actual geographical area or boundary of the unit.
3. The data for the aforesaid analysis is based on authentic sources and has been culled from the various publications of Census, CSO and NSSO for district and block level data, various central and state government departments, Central & State Elections Commissions and the concerned Returning Officers' releases, Electoral Rolls, Election results and allied publications, internal assessment, surveys, estimates and analysis. Therefore, certain adjustment of data at micro level may have been done to arrive closer to the macro data.
4. Data have been provided on an "As Is" and "As AVAILABLE" basis
5. The colours shown in the maps or diagram and charts of a particular party, alliance or AC are indicative and do not represent them.
6. This publication which includes maps, sheets, graphs and data would be the property under copyright of Datanet only. The user may use these for its internal study, analysis and research purposes. It's public display, re-selling or any commercial uses by the user are not allowed.
7. Datanet has taken due care and caution in compilation and processing of data and allied information, but does not guarantee the accuracy, adequacy or completeness of any information/analysis and will be not responsible for any errors or omissions or for the results obtained from the use of such information/analysis.
8. All the contents for the publication have been culled from various authentic sources and Datanet reasonably believes such sources to be reliable, but does not make any representations, express or implied as to the accuracy or fitness of use of such information. The information or contents of the information/analysis do not constitute advice and should not be relied upon in making (or refraining from making) any decision. Any reliance placed upon the information provided by Datanet is the sole responsibility and strictly at the user's risk.
9. In no event will Datanet be liable for any damages (including, without limitation, damages for loss of business projects, or loss of profits) arising in contract, tort or otherwise from the use of or inability to use any of its contents, or from any action taken (or refrained from being taken) as a result of using the analysis or any of its contents. Datanet its directors, owners, editors, officials, employees, distributor and agents or any associate will not be liable for any errors in the information contained or any consequences arising from the use of the contents of the provided information/analysis.
10. If any provision of these terms and conditions is held invalid or illegal or unenforceable for any reason by any court of competent jurisdiction, such provision shall be severed and the remainder of provisions of the terms and conditions shall continue in full force and effect as if the Term of Use had been executed with the invalid, illegal or unenforceable provision eliminated.
11. If there are any discrepancies in the information provided, please bring it to attention of Datanet for suitable rectification measures.

**Buy Online This Complete Book At  
Datanet India eBooks Store**

[www.indiastatpublications.com](http://www.indiastatpublications.com)

or go directly at

[http://www.indiastatpublications.com/  
Assembly\\_factbook/Maharashtra/Raigad/ Pen](http://www.indiastatpublications.com/Assembly_factbook/Maharashtra/Raigad/Pen)

 **india**stat**elections**

ISBN : 978-93-5293-321-1



9 789352 933211