



Maharashtra

Assembly Factbook™

Kudal Assembly Constituency



Key Electoral Data of Kudal
Assembly Constituency (Vidhan Sabha)

Maharashtra

Assembly Factbook™

Kudal Assembly Constituency



Kudal Vidhan Sabha

Editor & Director

Dr. R.K. Thukral

Research Editor

Dr. Shafeeq Rahman

Compiled, Researched and Published by Datanet India Pvt. Ltd.

D-100, 1st Floor,

Okhla Industrial Area, Phase-I,
New Delhi- 110020.

Ph.: 91-11- 43580781-84

Email : support@indiastatpublications.com

Website : www.indiastatelections.com

Online Book Store :

www.indiastatpublications.com

Report No. : AFB/MH-269-0123

ISBN : 978-93-5293-266-5

First Edition : January, 2018

Sixth Updated Edition : January, 2023

Price : Rs.11500/-

US\$ 310

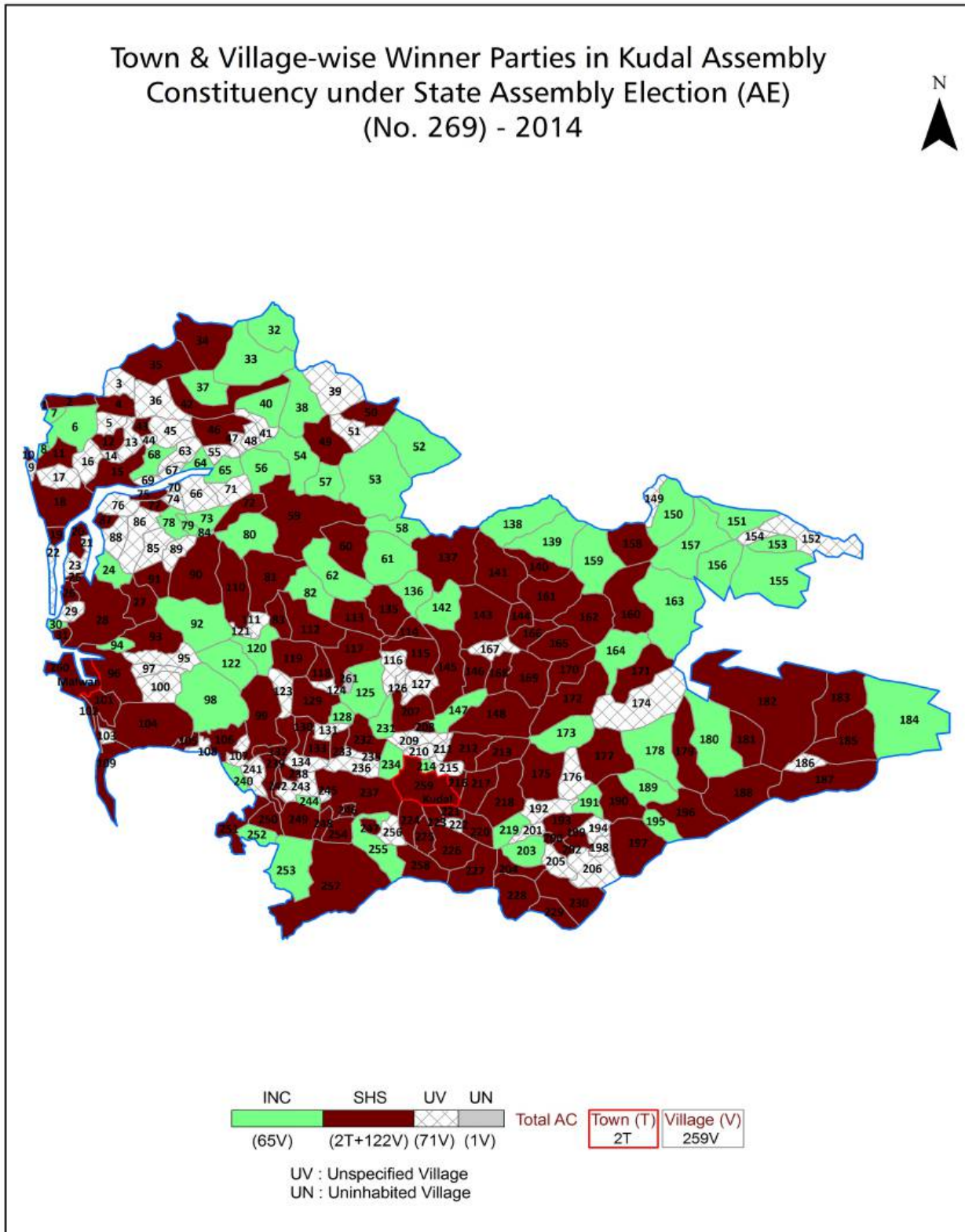
© Datanet India Pvt. Ltd.

All rights reserved. No part of this book may be reproduced, stored in a retrieval system or transmitted in any form or by any means, mechanical photocopying, photographing, scanning, recording or otherwise without the prior written permission of the publisher. Please refer to Disclaimer at page no. 216 for the use of this publication.

Printed in India

No.	Particulars	Page No.
	Introduction	
1	Assembly Constituency - (Vidhan Sabha) at a Glance Features of Assembly as per Delimitation Commission of India (2008)	1-2
	Location and Political Maps	
2	Location Map Boundaries of Assembly Constituency - (Vidhan Sabha) in District Boundaries of Assembly Constituency under Parliamentary Constituency - (Lok Sabha) Town & Village-wise Winner Parties- 2019-PE, 2019-AE, 2014-PE, 2014-AE, 2009-PE and 2009-AE	3-10
	Administrative Setup (2011)	
3	District Sub-district Towns Villages Inhabited Villages Uninhabited Villages Village Panchayat Intermediate Panchayat	11-24
	Demographics (2011)	
4	Population Households Rural/Urban Population Towns and Villages by Population Size Sex Ratio (Total & 0-6 Years) Religious Population Social Population Literacy Rate	25-26
	Electoral Features	
5	Important Dates of Last Elections Held Electors by Gender Service Electors Voters Voters Turnout Polling Stations & Average Number of Electors per Polling Station Electors by Age Group Present Elected Representatives	27-32
	Historical Summary Election Results	
6	Vote Share of Major Parties Winning Margin (Number & Percentage) Polarity of Parties Summary Result of Assembly Segment of Parliamentary Elections 2019, 2014 and 2009 Summary Result of Assembly Elections 2019, 2014 and 2009	33-42
	Polling Station Level Election Results	
7	Name and Number of Polling Station 2019-PE, 2019-AE, 2014-PE, 2014-AE, 2009-PE and 2009-AE Polling Station-wise Electors, Voters & Voters Turnout 2019-PE, 2019-AE, 2014-PE, 2014-AE, 2009-PE and 2009-AE Polling Station wise Elections Results 2019-PE, 2019-AE, 2014-PE, 2014-AE, 2009-PE and 2009-AE	43-194
	Share of Assembly Constituency	
8	Share of Assembly Constituency - (Vidhan Sabha) in State, District and Parliamentary Constituency - (Lok Sabha)	195
	Socio-Economic Amenities (2011)	
9	Access to Administrative Units Agricultural, Manufacturing and Industrial Commodities Demographic Indicators Education Health & Manpower Drinking Water Supply Sanitation Entertainment and Recreations Infrastructure Power Food Allocation Distribution and Marketing of Agriculture Commodities Infrastructure Transport and Road Infrastructure Communication Banking and Financial Services Land Use Irrigation Source	197-211
10	Abbreviation & Sources	213-214
11	Disclaimer	216

Location & Political Map



Administrative Setup

List of Village Panchayat & Intermediate Panchayat (Block) Name - 2011

Village Name	Village Panchayat Name	Intermediate Panchayat Name
Achare	Achare	Malwan
Advali	Adawali	Malwan
Akeri	Akeri	Kudal
Amavane	Kirlos	Malwan
Ambadpal	Ambadpal	Kudal
Amberi	-	Malwan
Amberi	Wados	Kudal
Ambrad	Ambrad	Kudal
Amdos	Ambdos	Malwan
Anandvhal	Anandvhal	Malwan
Anav	Anav	Kudal
Andurle	Andurle	Kudal
Anganewadi	Masure - Dangmode	Malwan
Anjivade	Vasoli	Kudal
Aparadhwadi	Chindar	Malwan
Asagani	Asgani	Malwan
Asarondi	Asarondi	Malwan
Avalegaon	Avalegaon	Kudal
Bagadwadi	Trimbak	Malwan
Bagavewadi	Trimbak	Malwan
Bagwadi	Kalase	Malwan
Bambarde Tarf Kalsuli	Vetal Bambarde	Kudal
Bambarde Tarf Mangaon	Bambarde Tarf Mangaon	Kudal
Bambuli Tarf Haveli	Bambuli	Kudal
Bandiwade Bk.	Bandiwade Bk	Malwan
Bandiwade Kh.	Bandiwade	Malwan
Bav	Bav	Kudal
Belachiwadi	Belachiwadi	Malwan
Belnadi	Pawashi	Kudal

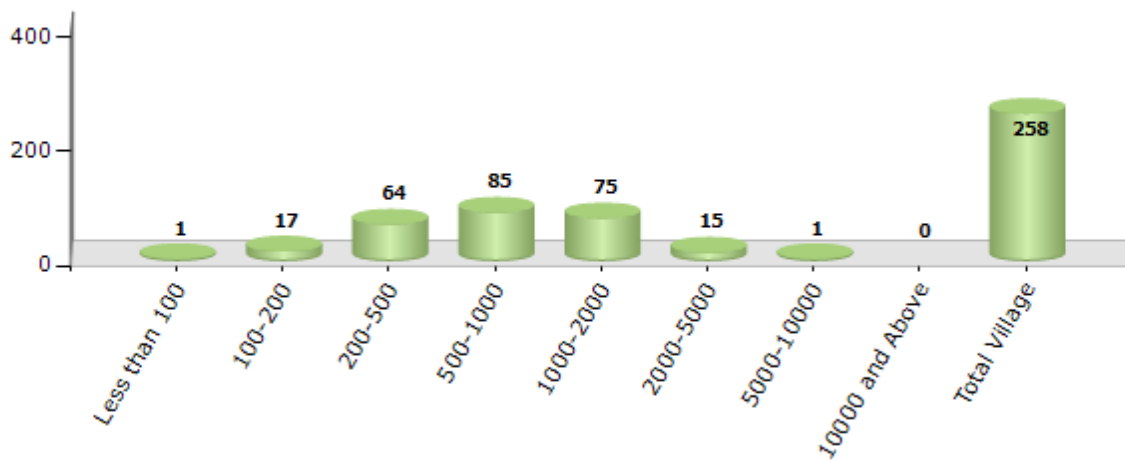
Contd....

Demographics

Number of Villages by Population Size - 2011

Less than 100	100-200	200-500	500-1000	1000-2000	2000-5000	5000-10000	10000 and Above	Total Village
1	17	64	85	75	15	1	0	258

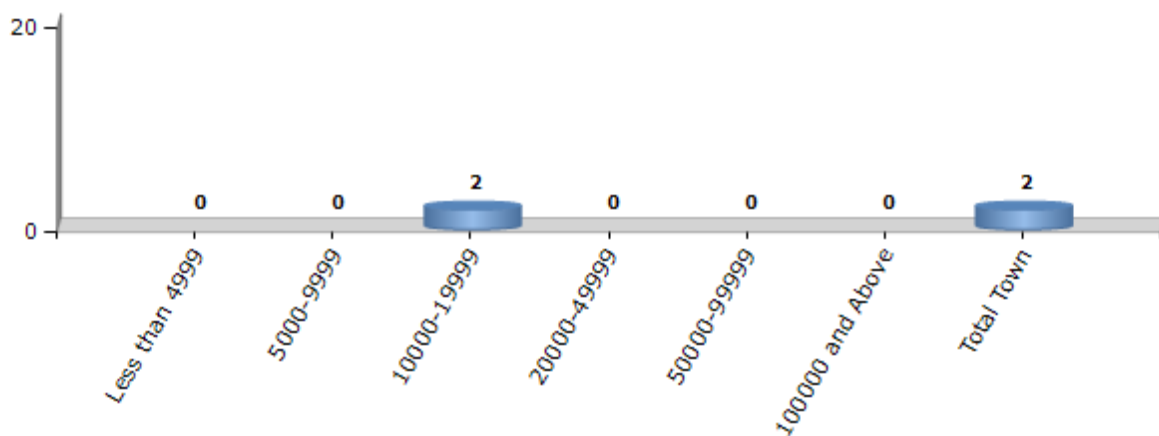
Number of Villages by Population Size - 2011



Number of Towns by Population Size - 2011

Less than 4999	5000-9999	10000-19999	20000-49999	50000-99999	100000 and Above	Total Town
0	0	2	0	0	0	2

Number of Towns by Population Size - 2011

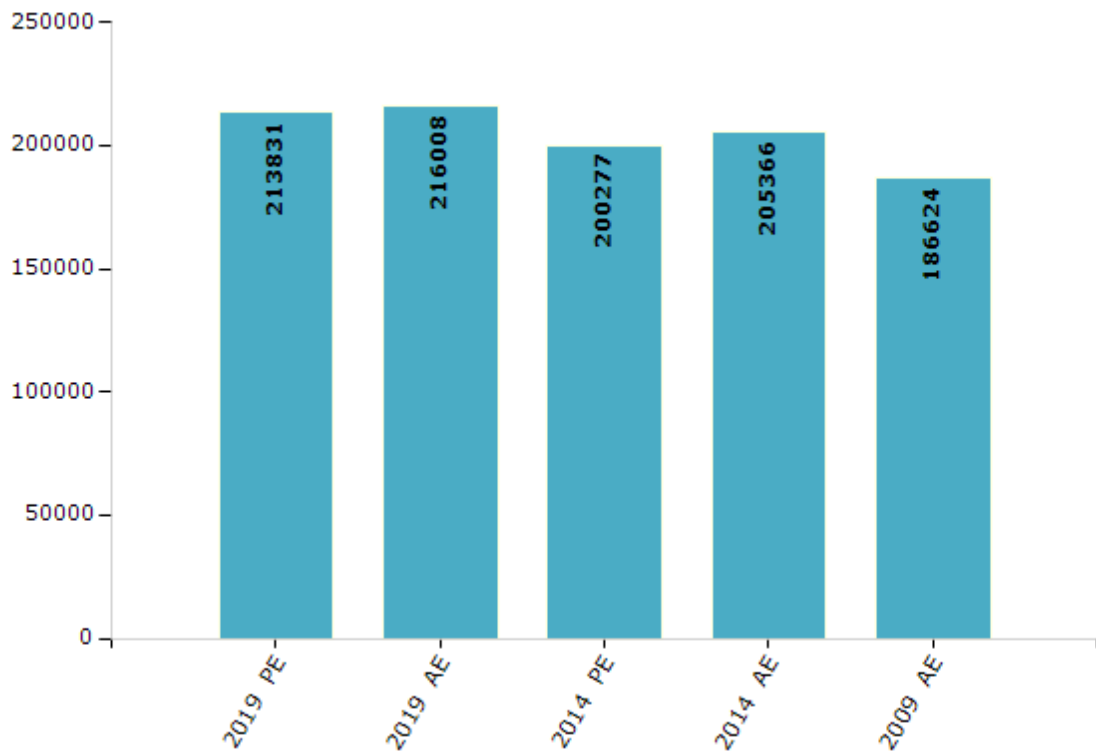


Electoral Features

Electors by Male & Female

Year	Male	Female	Others	Total	Year	Male	Female	Others	Total
2019 PE	106314	107515	2	213831	1999 AE	-	-	-	-
2019 AE	107426	108582	0	216008	1995 AE	-	-	-	-
2014 PE	98681	101592	4	200277	1990 AE	-	-	-	-
2014 AE	101065	104301	0	205366	1985 AE	-	-	-	-
2009 PE	-	-	-	-	1980 AE	-	-	-	-
2009 AE	88967	97657	-	186624	1978 AE	-	-	-	-
2004 PE	-	-	-	-	1972 AE	-	-	-	-
2004 AE	-	-	-	-	1967 AE	-	-	-	-
1999 PE	-	-	-	-	1962 AE	-	-	-	-

Number of Electors



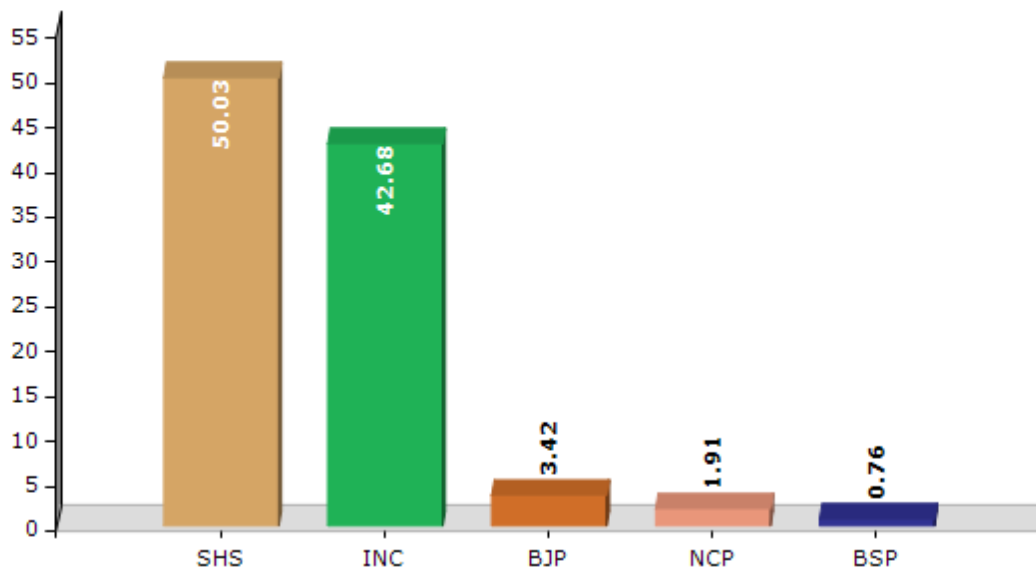
Note : AE : Assembly Election, PE : Assembly Segment of Parliamentary Election

Historical Summary Election Results

Summary Result of Assembly Election - 2014

Candidate Name	Party	Votes	Votes %
Naik Vaibhav Vijay	SHS	70582	50.03
Narayan Tatu Rane	INC	60206	42.68
Baba Alias Vishnu Mondkar	BJP	4819	3.42
Pushpasen Sawant	NCP	2692	1.91
Kasalkar Ravindra Harishchandra	BSP	1071	0.76
Sneha Jitendra Kerkar	IND	747	0.53
	NOTA	949	0.67

Votes Percentage of Top Parties - 2014



Polling Station Level Election Results

Number and Name of Polling Stations (PS) (2019 AE)

Number of Polling Stations	Name of Polling Stations	Number of Polling Stations	Name of Polling Stations
1	Jawahar Lal Purn Prathamik Vidya Mandir Nirom No.	22	Z. P. Sindhudurg Purn Prathamik Shala Asagani N. 1
2	Bharat Vidya Mandir Math Budruk Purn Prathamik Sha	23	Z. P. Prayamari School Rathivade No. 1
3	Purn Prathamik Shala Budhavale No. 1	24	Purn Prathamek Shala Adavali No. 1
4	Z. P. Purn Prathamik Shla Kudopi	25	Jivan Shikshan Vidya Mandir Bandivade No. 1
5	Akari Bramhan Vidya Mandir Chindar	26	Gra . P. Karyalay Koil Bandivade
6	Purn Prathamik Shala Chindar No. 1	27	Z. P. Sindhudurg Prathamik Shala Vayangani No. 1 N
7	Gramapanchayat Karyalay Chindar	28	Purn Pra. Shala Thaneshvar Bhandaar wada
8	K. Ba. Na. Bidaye Vidya Mandir Kendra Shala No. 1	29	Shri. Dajisaheb Prabhu Gaonvakar Pu. Pra. Shala Ma
9	K. Ba. Na. Bidaye Vidya Mandir Kendra Shala N. 1 A	30	Z. P. Sindhudurg High School Masure Khajanavadi
10	Jivan Shikshan Vidya Mandir Achara Paravadi	31	Z. P. Prayamari School Masure (devulavada)
11	Z. P. Pu. Pra. Shala Achara Bhandaravadi	32	Purn Prathamik Shala Deulavada
12	Z. P. Purn Prathamik Shala Achare Gakadavadi	33	Masure Ajjukeshan Society Ramchandra Pandurang Bag
13	Z. P. Marathi Shala Hutatma D. B. Koyande Achare P	34	Masure Ajjukeshan Society Ramchandra Pandurang Bag
14	Z. P. Pu. Pra. Shala Achare Hirlevadi	35	Z. P. Prayamari School Veral
15	Jivan Shikshan Shala Trimbak No. 1	36	Z. P. Prayamari School Malond No. 1
16	Jivan Shikshan Shala Trimbak No. 1	37	Z. P. Prayamari Shala Chunavare
17	Z. P. Purn Prathamik Shala Palasamb	38	Shree Saraswati Vidyalay Masade
18	Mahatma Gandhi Vidyalay Shravan	39	Prayamari School Vidya Mandir Vadachapat
19	Z. P. Sindhudurg Purn Prathamik Shala Ramagad No.	40	Z. P. Pra. Kendra Shala Poip N. 1
20	Prayamari Shala Gothane Gaonthan	41	Z. P. Pra. Kendra Shala Poip No. 1
21	Purn Prathamik Shala Kirles Gaonthan	42	Z. P. Pu. Pra. Shala Hivale No. 1

Contd....

Polling Station Level Election Results

Polling Station-wise Votes Secured by Overall Top Five Parties in Kudal Assembly in Assembly Election (AE) under Ratnagiri - Sindhudurg Parliamentary Constituency in Maharashtra (2019)

Number of Polling Station	Winner - Naik Vaibhav Vijay (SHS)	Runner-up - Ranjit Dattatray Desai (IND)	3rd - Arvind Namdeo Mondkar (INC)	4th - Balkrishna Vitthal Jadhav (IND)	5th - Dheeraj Vishwanath Parab (MNS)	NOTA	Other	Total Votes Secured
36	332	101	9	4	2	5	7	460
37	129	94	9	19	6	4	2	263
38	200	197	18	16	6	13	5	455
39	228	312	7	13	7	9	7	583
40	289	221	7	8	5	2	3	535
41	132	65	7	5	4	2	4	219
42	253	392	8	19	13	3	6	694
43	276	415	2	20	17	5	4	739
44	376	204	10	14	6	9	6	625
45	212	186	9	27	9	3	6	452
46	136	123	0	2	5	2	3	271
47	250	215	7	19	15	7	8	521
48	187	146	10	41	6	8	6	404
49	246	180	4	8	3	10	4	455
50	63	107	2	7	2	1	2	184
51	171	130	4	20	7	4	6	342
52	164	254	9	13	3	8	5	456
53	138	135	3	5	4	2	5	292
54	328	234	12	27	4	1	4	610
55	298	208	9	5	11	7	6	544
56	153	160	5	4	3	6	4	335
57	169	173	7	18	6	5	4	382
58	165	168	4	2	3	4	1	347
59	280	174	11	1	13	4	1	484
60	214	217	21	13	10	3	4	482
61	224	102	6	14	3	0	3	352
62	269	172	10	4	7	8	0	470
63	198	174	5	0	1	2	5	385
64	270	244	28	2	11	4	1	560
65	233	217	10	2	10	4	4	480
66	237	322	15	3	4	7	5	593
67	189	141	7	8	8	1	1	355
68	176	177	4	9	6	8	3	383
69	217	112	8	1	7	3	4	352
70	135	194	14	12	8	4	8	375

Contd....

Polling Station Level Election Results

Winner, Runner-up and 3rd Party Position & Winning Margin According to Polling Stations in Kudal Assembly in Assembly Election (AE) under Ratnagiri - Sindhudurg Parliamentary Constituency in Maharashtra (2019)

Polling Station Number	Winner Party	Winner Votes (%)	Runner-up Party	Runner-up Votes (%)	Winning Margin Votes (%)	Third Party	Third Party Votes (%)	Other Votes (%)
71	IND (RDD)	318 (51.88)	SHS	253 (41.27)	65 (10.61)	INC	16 (2.61)	26 (4.24)
72	IND (RDD)	334 (50.84)	SHS	288 (43.84)	46 (7)	INC	14 (2.13)	21 (3.2)
73	IND (RDD)	302 (52.61)	SHS	220 (38.33)	82 (14.28)	INC	16 (2.79)	36 (6.27)
74	IND (RDD)	201 (47.52)	SHS	188 (44.44)	13 (3.08)	MNS	11 (2.6)	23 (5.44)
75	SHS	193 (54.52)	IND (RDD)	147 (41.53)	46 (12.99)	IND (BVJ)	7 (1.98)	7 (1.98)
76	IND (RDD)	270 (54.11)	SHS	202 (40.48)	68 (13.63)	INC	11 (2.2)	16 (3.21)
77	SHS	262 (56.71)	IND (RDD)	171 (37.01)	91 (19.7)	INC	10 (2.16)	19 (4.11)
78	SHS	237 (58.37)	IND (RDD)	147 (36.21)	90 (22.16)	MNS	10 (2.46)	12 (2.96)
79	IND (RDD)	277 (49.46)	SHS	235 (41.96)	42 (7.5)	IND (BVJ)	26 (4.64)	22 (3.93)
80	SHS	297 (47.75)	IND (RDD)	273 (43.89)	24 (3.86)	INC	20 (3.22)	32 (5.14)
81	SHS	260 (48.15)	IND (RDD)	242 (44.81)	18 (3.34)	IND (BVJ)	11 (2.04)	27 (5)
82	IND (RDD)	182 (48.53)	SHS	143 (38.13)	39 (10.4)	IND (BVJ)	25 (6.67)	25 (6.67)
83	SHS	229 (40.6)	IND (RDD)	215 (38.12)	14 (2.48)	IND (SSP)	45 (7.98)	75 (13.3)
84	IND (RDD)	296 (48.29)	SHS	286 (46.66)	10 (1.63)	IND (BVJ)	9 (1.47)	22 (3.59)
85	IND (RDD)	218 (50.82)	SHS	147 (34.27)	71 (16.55)	IND (BVJ)	29 (6.76)	35 (8.16)
86	IND (RDD)	261 (46.86)	SHS	223 (40.04)	38 (6.82)	IND (BVJ)	36 (6.46)	37 (6.64)
87	IND (RDD)	201 (46.96)	SHS	110 (25.7)	91 (21.26)	IND (BVJ)	62 (14.49)	55 (12.85)
88	IND (RDD)	186 (51.38)	SHS	151 (41.71)	35 (9.67)	MNS	13 (3.59)	12 (3.31)
89	SHS	268 (52.24)	IND (RDD)	211 (41.13)	57 (11.11)	MNS	13 (2.53)	21 (4.09)
90	IND (RDD)	376 (47.96)	SHS	334 (42.6)	42 (5.36)	INC	31 (3.95)	43 (5.48)
91	IND (RDD)	363 (67.85)	SHS	137 (25.61)	226 (42.24)	INC	11 (2.06)	24 (4.49)
92	IND (RDD)	422 (51.78)	SHS	343 (42.09)	79 (9.69)	INC	22 (2.7)	28 (3.44)
93	SHS	295 (48.36)	IND (RDD)	200 (32.79)	95 (15.57)	INC	56 (9.18)	59 (9.67)
94	SHS	233 (59.9)	IND (RDD)	127 (32.65)	106 (27.25)	INC	23 (5.91)	6 (1.54)
95	SHS	272 (59.65)	IND (RDD)	148 (32.46)	124 (27.19)	INC	14 (3.07)	22 (4.82)
96	SHS	260 (48.15)	IND (RDD)	227 (42.04)	33 (6.11)	INC	20 (3.7)	33 (6.11)
97	SHS	267 (54.38)	IND (RDD)	191 (38.9)	76 (15.48)	INC	20 (4.07)	13 (2.65)
98	SHS	308 (62.73)	IND (RDD)	150 (30.55)	158 (32.18)	INC	16 (3.26)	17 (3.46)
99	SHS	401 (54.63)	IND (RDD)	239 (32.56)	162 (22.07)	INC	61 (8.31)	33 (4.5)
100	SHS	233 (59.44)	IND (RDD)	127 (32.4)	106 (27.04)	INC	20 (5.1)	12 (3.06)
101	SHS	170 (49.42)	IND (RDD)	137 (39.83)	33 (9.59)	INC	20 (5.81)	17 (4.94)
102	SHS	205 (52.56)	IND (RDD)	147 (37.69)	58 (14.87)	INC	22 (5.64)	16 (4.1)
103	IND (RDD)	354 (51.08)	SHS	286 (41.27)	68 (9.81)	INC	30 (4.33)	23 (3.32)
104	SHS	336 (61.09)	IND (RDD)	164 (29.82)	172 (31.27)	INC	24 (4.36)	26 (4.73)
105	SHS	205 (45.86)	IND (RDD)	148 (33.11)	57 (12.75)	INC	45 (10.07)	49 (10.96)

Contd....

Socio-Economic Amenities - Rural

Access to Education Facilities

Particulars	Number of Villages (% of Population)				
	Available	Not Available	If Not Available (Distance of Nearest Facility)		
			A	B	C
Govt. Primary School	249 (99)	9 (1)	4 (0)	4 (0)	0 (0)
Private Primary School	8 (7)	250 (93)	0 (0)	1 (0)	0 (0)
Govt. Middle School	177 (87)	81 (13)	33 (6)	11 (2)	23 (4)
Private Middle School	6 (5)	252 (95)	11 (2)	1 (0)	2 (0)
Govt. Secondary School	56 (36)	202 (64)	86 (29)	32 (9)	41 (12)
Private Secondary School	3 (3)	255 (97)	28 (9)	12 (4)	1 (0)
Govt. Senior Secondary School	20 (16)	238 (84)	48 (22)	60 (23)	77 (23)
Private Senior Secondary School	2 (3)	256 (97)	19 (6)	18 (6)	15 (4)
Govt. Arts and Science Degree College	0 (0)	258 (100)	22 (12)	33 (16)	148 (54)
Private Arts and Science Degree College	0 (0)	258 (100)	5 (2)	16 (7)	34 (10)
Govt. Engineering College	0 (0)	258 (100)	6 (4)	8 (4)	127 (43)
Private Engineering College	0 (0)	258 (100)	0 (0)	0 (0)	117 (49)
Govt. Medicine College	0 (0)	258 (100)	3 (2)	8 (5)	199 (79)
Private Medicine College	0 (0)	258 (100)	0 (0)	1 (0)	47 (15)
Govt. Management Institute	0 (0)	258 (100)	3 (2)	8 (5)	199 (79)
Private Management Institute	0 (0)	258 (100)	0 (0)	1 (0)	47 (15)
Govt. Polytechnic	0 (0)	258 (100)	8 (2)	3 (1)	159 (66)
Private Polytechnic	0 (0)	258 (100)	2 (0)	11 (4)	75 (27)
Govt. Vocational Training School/ITI	4 (4)	254 (96)	4 (3)	32 (18)	172 (60)
Private Vocational Training School/ITI	7 (4)	251 (96)	1 (0)	4 (1)	35 (11)
Govt. Non Formal Training Centre	0 (0)	258 (100)	1 (1)	9 (4)	189 (72)
Private Non Formal Training Centre	0 (0)	258 (100)	1 (0)	7 (3)	51 (19)
Govt. School For Disabled	5 (4)	253 (96)	17 (8)	11 (6)	169 (59)
Private School For Disabled	0 (0)	258 (100)	1 (0)	1 (0)	54 (22)
Government Others	0 (0)	258 (100)	0 (0)	0 (0)	0 (0)
Private Others	35 (14)	223 (86)	0 (0)	0 (0)	0 (0)

Note : Distance A : Less than 5 km; B : Between 5-10 km; C : 10+ km.; Source : Data Analysis is based on 2011 Census.

DISCLAIMER

The Terms of Use and Disclaimer of Datanet India Private Limited (hereinafter referred to as "Datanet") for use of this analysis report of **Kudal Assembly Constituency (Kudal Vidhan Sabha)** :-

1. **Assembly Factbook™** is a Registered Trade Mark owned by Datanet.
2. All the maps are sketched and graphical representation only and have not been drawn to the scale and also not to represent the actual geographical area or boundary of the unit.
3. The data for the aforesaid analysis is based on authentic sources and has been culled from the various publications of Census, CSO and NSSO for district and block level data, various central and state government departments, Central & State Elections Commissions and the concerned Returning Officers' releases, Electoral Rolls, Election results and allied publications, internal assessment, surveys, estimates and analysis. Therefore, certain adjustment of data at micro level may have been done to arrive closer to the macro data.
4. Data have been provided on an "As Is" and "As AVAILABLE" basis
5. The colours shown in the maps or diagram and charts of a particular party, alliance or AC are indicative and do not represent them.
6. This publication which includes maps, sheets, graphs and data would be the property under copyright of Datanet only. The user may use these for its internal study, analysis and research purposes. It's public display, re-selling or any commercial uses by the user are not allowed.
7. Datanet has taken due care and caution in compilation and processing of data and allied information, but does not guarantee the accuracy, adequacy or completeness of any information/analysis and will be not responsible for any errors or omissions or for the results obtained from the use of such information/analysis.
8. All the contents for the publication have been culled from various authentic sources and Datanet reasonably believes such sources to be reliable, but does not make any representations, express or implied as to the accuracy or fitness of use of such information. The information or contents of the information/analysis do not constitute advice and should not be relied upon in making (or refraining from making) any decision. Any reliance placed upon the information provided by Datanet is the sole responsibility and strictly at the user's risk.
9. In no event will Datanet be liable for any damages (including, without limitation, damages for loss of business projects, or loss of profits) arising in contract, tort or otherwise from the use of or inability to use any of its contents, or from any action taken (or refrained from being taken) as a result of using the analysis or any of its contents. Datanet its directors, owners, editors, officials, employees, distributor and agents or any associate will not be liable for any errors in the information contained or any consequences arising from the use of the contents of the provided information/analysis.
10. If any provision of these terms and conditions is held invalid or illegal or unenforceable for any reason by any court of competent jurisdiction, such provision shall be severed and the remainder of provisions of the terms and conditions shall continue in full force and effect as if the Term of Use had been executed with the invalid, illegal or unenforceable provision eliminated.
11. If there are any discrepancies in the information provided, please bring it to attention of Datanet for suitable rectification measures.

**Buy Online This Complete Book At
Datanet India eBooks Store**

www.indiastatpublications.com

or go directly at

[http://www.indiastatpublications.com/
Assembly_factbook/Maharashtra/Ratnagiri_-_Sindhudurg/
Kudal](http://www.indiastatpublications.com/Assembly_factbook/Maharashtra/Ratnagiri_-_Sindhudurg/Kudal)

 **indiatat**elections

ISBN : 978-93-5293-266-5

