



Maharashtra

Assembly Factbook™

Patan Assembly Constituency



Key Electoral Data of Patan
Assembly Constituency (Vidhan Sabha)

Maharashtra

Assembly Factbook™

Patan Assembly Constituency



Patan Vidhan Sabha

Editor & Director

Dr. R.K. Thukral

Research Editor

Dr. Shafeeq Rahman

Compiled, Researched and Published by Datanet India Pvt. Ltd.

D-100, 1st Floor,

Okhla Industrial Area, Phase-I,
New Delhi- 110020.

Ph.: 91-11- 43580781-84

Email : support@indiastatpublications.com

Website : www.indiastatelections.com

Online Book Store :

www.indiastatpublications.com

Report No. : AFB/MH-261-0125

ISBN : 978-93-5293-319-8

First Edition : January, 2018

Eighth Updated Edition : January, 2025

Price : Rs.11500/-

US\$ 310

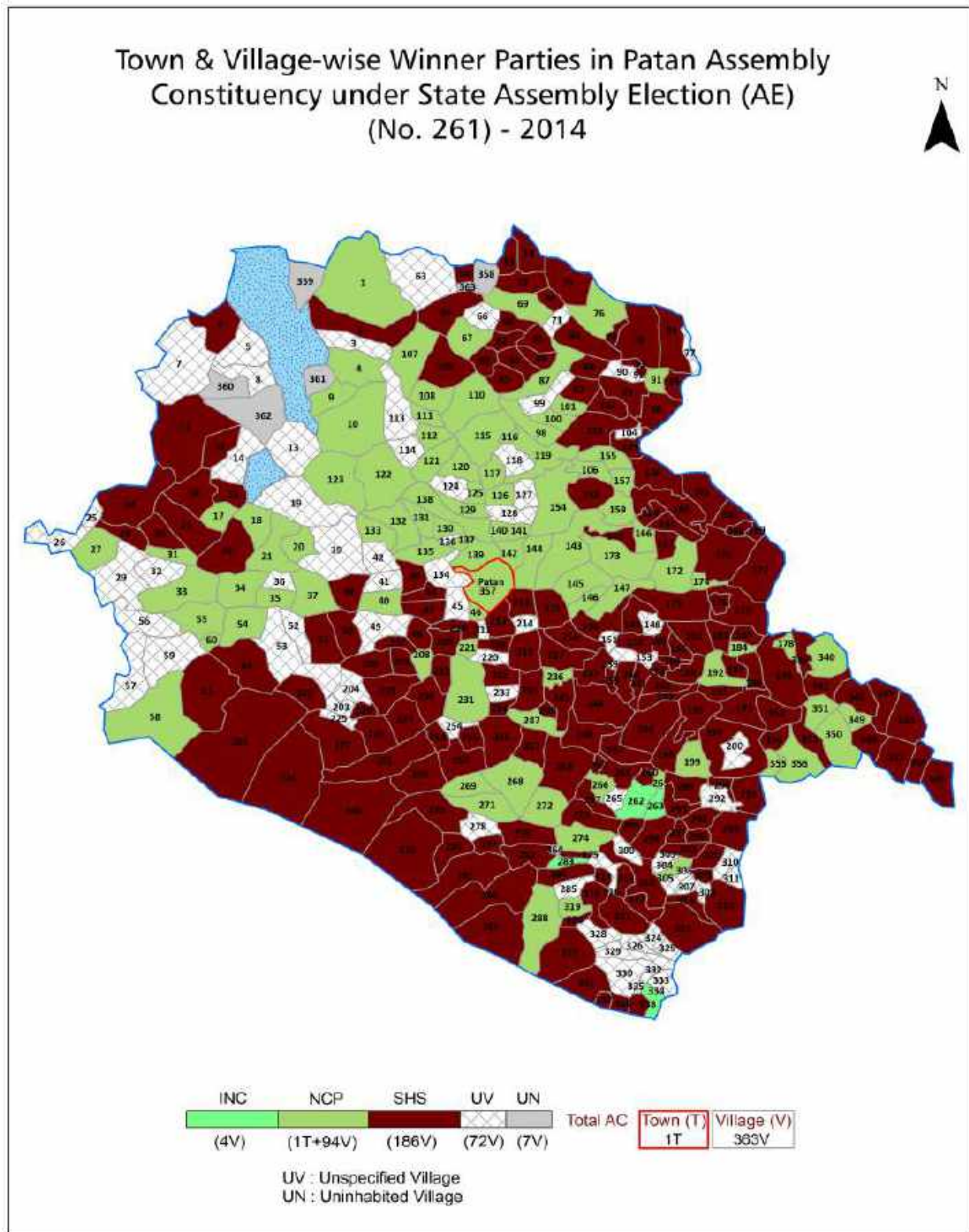
© Datanet India Pvt. Ltd.

All rights reserved. No part of this book may be reproduced, stored in a retrieval system or transmitted in any form or by any means, mechanical photocopying, photographing, scanning, recording or otherwise without the prior written permission of the publisher. Please refer to Disclaimer at page no. 245 for the use of this publication.

Printed in India

No.	Particulars	Page No.
	Introduction	
1	Assembly Constituency - (Vidhan Sabha) at a Glance Features of Assembly as per Delimitation Commission of India (2008)	1-2
	Location and Political Maps	
2	Location Map Boundaries of Assembly Constituency - (Vidhan Sabha in District Boundaries of Assembly Constituency under Parliamentary Constituency - (Lok Sabha) Town & Village-wise Winner Parties- 2024-PE, 2024-AE, 2019-PE, 2019-AE, 2014-PE and 2014-AE	3-10
	Administrative Setup (2011)	
3	District Sub-district Towns Villages Inhabited Villages Uninhabited Villages Village Panchayat Intermediate Panchayat	11-29
	Demographics (2011)	
4	Population Households Rural/Urban Population Towns and Villages by Population Size Sex Ratio (Total & 0-6 Years) Religious Population Social Population Literacy Rate	30-31
	Electoral Features	
5	Important Dates of Last Elections Held Electors by Gender Service Electors Voters Voters Turnout Polling Stations & Average Number of Electors per Polling Station Electors by Age Group Present Elected Representatives	32-37
	Historical Summary Election Results	
6	Vote Share of Major Parties Winning Margin (Number & Percentage Polarity of Parties Summary Result of Assembly Segment of Parliamentary Elections 2024, 2019, 2014, 2009, 2004 and 1999 Summary Result of Assembly Elections 2024, 2019, 2014, 2009, 2004, 1999, 1995, 1990, 1985, 1980, 1978, 1972, 1967 and 1962	38-59
	Polling Station Level Election Results	
7	Name and Number of Polling Station 2024-PE, 2024-AE, 2019-PE, 2019-AE, 2014-PE and 2014-AE Polling Station-wise Electors, Voters & Voters Turnout 2024-PE, 2024-AE, 2019-PE, 2019-AE, 2014-PE and 2014-AE Polling Station wise Elections Results 2024-PE, 2024-AE, 2019-PE, 2019-AE, 2014-PE & 2014-AE	60-223
	Share of Assembly Constituency	
8	Share of Assembly Constituency - (Vidhan Sabha) in State, District and Parliamentary Constituency - (Lok Sabha)	224
	Socio-Economic Amenities (2011)	
9	Access to Administrative Units Agricultural, Manufacturing and Industrial Commodities Demographic Indicators Education Health & Manpower Drinking Water Supply Sanitation Entertainment and Recreations Infrastructure Power Food Allocation Distribution and Marketing of Agriculture Commodities Infrastructure Transport and Road Infrastructure Communication Banking and Financial Services Land Use Irrigation Source	226-240
10	Abbreviation & Sources	242-243
11	Disclaimer	245

Location & Political Map



Administrative Setup

List of Village Panchayat & Intermediate Panchayat (Block) Name - 2011

Village Name	Village Panchayat Name	Intermediate Panchayat Name
Aadev Kh.	-	Patan
Abachiwadi	-	Karad
Abdarwadi	Abdarwadi	Patan
Acharewadi	Chaugulewadi	Patan
Adadev	-	Patan
Adul	Adul	Patan
Ambale	-	Patan
Ambavade kh.	-	Patan
Ambavane	Ambavane	Patan
Ambeghar tarf Marli	-	Patan
Ambewadi	Ghot	Patan
Ambrag	-	Patan
Ambrule	-	Patan
Aral	Kato	Patan
Arewadi	-	Karad
Asawalewadi	Asawalewadi	Patan
Atoli	Atoli Gureghar	Patan
Awarde	-	Patan
Bacholi	-	Patan
Bagalwadi	Bagalwadi	Patan
Bahe	Bahe	Patan
Bahule	Bahule	Patan
Baje	Nanel	Patan
Bamanewadi	-	Patan
Bamanwadi	Kumbhargaoon	Patan
Bambavade	-	Patan
Bandhvat	Bandhvat	Patan
Banpethwadi	Benpethwadi	Patan
Banpuri	-	Patan

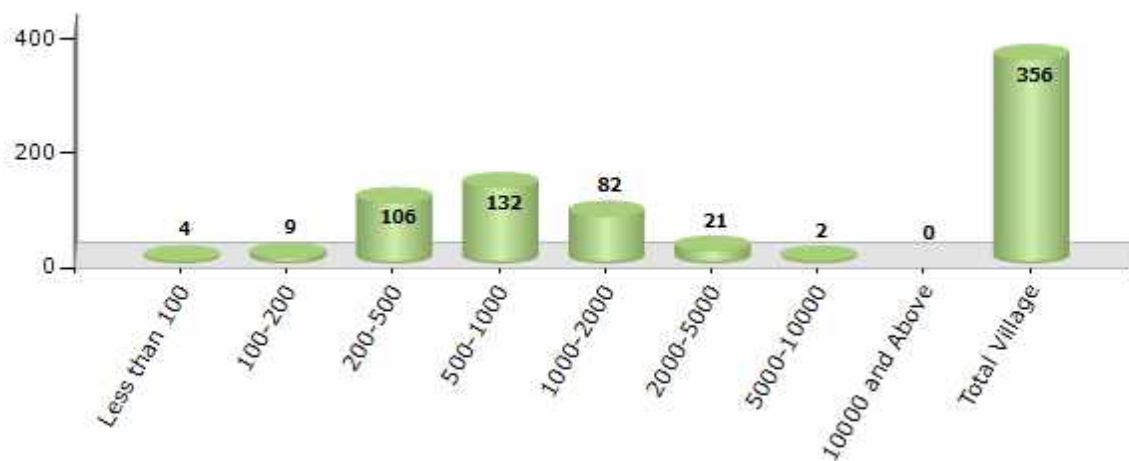
Contd....

Demographics

Number of Villages by Population Size - 2011

Less than 100	100-200	200-500	500-1000	1000-2000	2000-5000	5000-10000	10000 and Above	Total Village
4	9	106	132	82	21	2	0	356

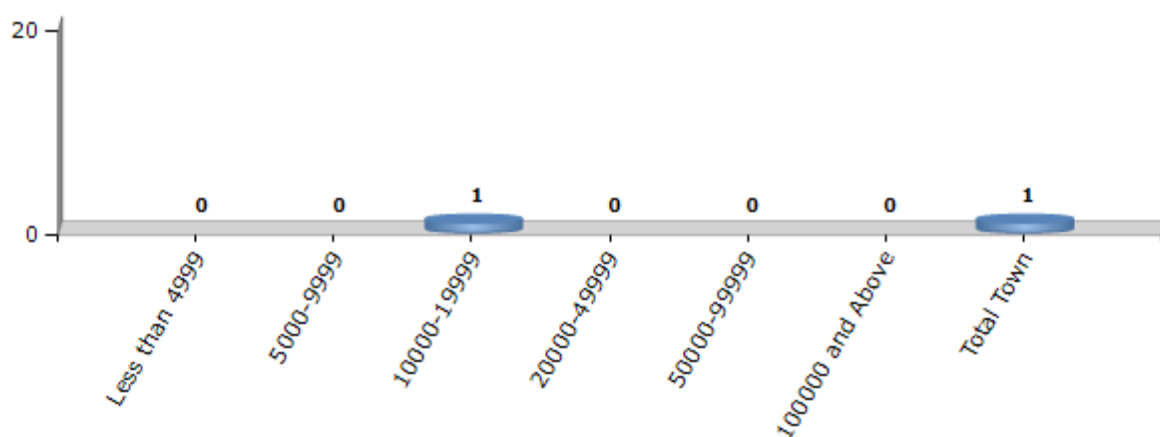
Number of Villages by Population Size - 2011



Number of Towns by Population Size - 2011

Less than 4999	5000-9999	10000-19999	20000-49999	50000-99999	100000 and Above	Total Town
0	0	1	0	0	0	1

Number of Towns by Population Size - 2011

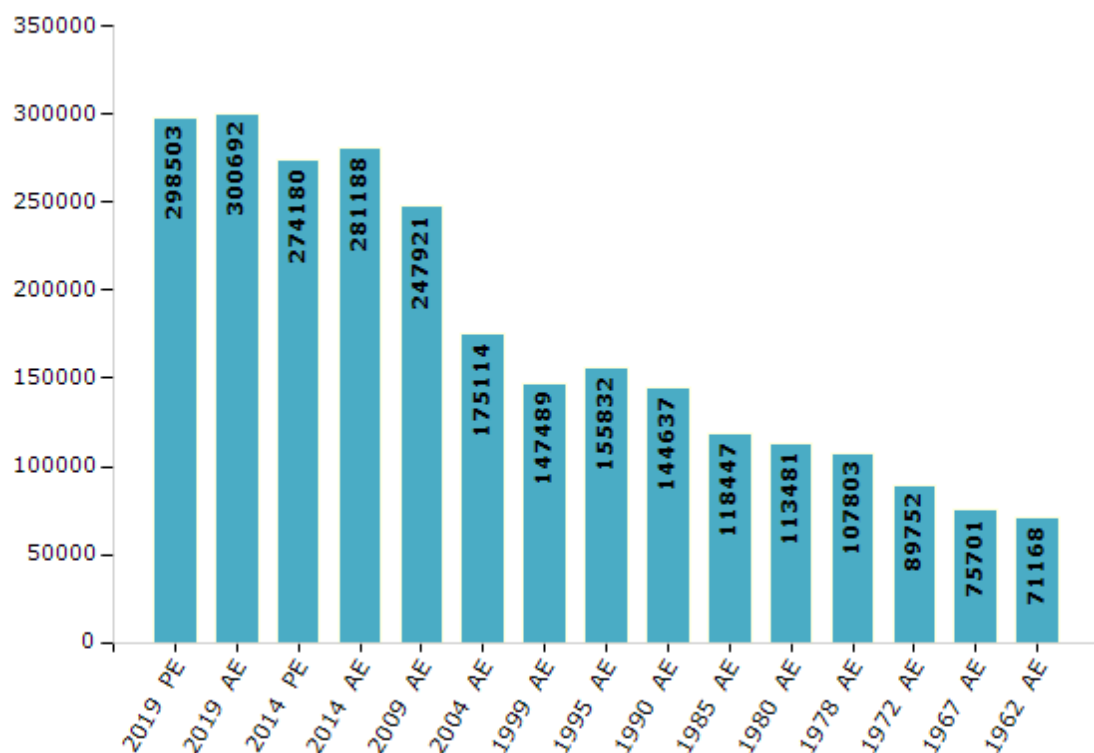


Electoral Features

Electors by Male & Female

Year	Male	Female	Others	Total	Year	Male	Female	Others	Total
2019 PE	151017	147485	1	298503	1999 AE	67813	79676	-	147489
2019 AE	152082	148609	1	300692	1995 AE	72599	83233	-	155832
2014 PE	139555	134625	0	274180	1990 AE	67071	77566	-	144637
2014 AE	142500	138688	0	281188	1985 AE	52679	65768	-	118447
2009 PE	-	-	-	-	1980 AE	51278	62203	-	113481
2009 AE	124020	123901	-	247921	1978 AE	48944	58859	-	107803
2004 PE	-	-	-	-	1972 AE	41547	48205	-	89752
2004 AE	84708	90406	-	175114	1967 AE	-	-	-	75701
1999 PE	-	-	-	-	1962 AE	-	-	-	71168

Number of Electors



Note : AE : Assembly Election, PE : Assembly Segment of Parliamentary Election

Historical Summary Election Results

Summary Result of Assembly Election - 2014

Candidate Name	Party	Votes	Votes %
Desai Shambhuraraj Shivajirao	SHS	104419	50.54
Patankar Satyajit Vikramsinh	NCP	85595	41.43
Patil Hindurao Shankarrao	INC	7642	3.7
Deepak Bandu Mahadik	BJP	2102	1.02
Sagar Balasaheb Mane	IND	2084	1.01
Dattatray Gunda Bhise	IND	1287	0.62
More Ganesh Shivaji	IND	888	0.43
Ravindra Shankar Shelar	MNS	643	0.31
Kamble Shivaji Bhimaji	BSP	455	0.22
Chandrakant Raghunath Yadav	IND	237	0.11
Sunil Krushna Kamble	IND	212	0.1
Hanumant Shankar Kamble	LAP	151	0.07
Dr. Sandeep Rajaram Mane	PWPI	125	0.06
Galve Ankush Bandu	IND	110	0.05
Priyanka Pradeep Salunkhe	BMUP	89	0.04
	NOTA	550	0.27

Polling Station Level Election Results

Number and Name of Polling Stations (PS) (2019 AE)

Number of Polling Stations	Name of Polling Stations	Number of Polling Stations	Name of Polling Stations
1	G. P. Pra. Shala Kholi No. 1 Ambeghar	22	G. P. Pra. Shala Kholi No. 1 Rasati
2	G. P. Pra. Shala Kholi No. 1 Manainagar	23	G. P. Pra. Shala Kholi No. 1 Gadhavakhop
3	G. P. Pra. Shala Kholi No. 1 Torne	24	G. P. Pra. Shala Kholi No. 1 Kathi
4	G. P. Pra. Shala Kholi No. 1 Bopoli	25	G. P. Pra. Shala Kholi No. 1 Bhambe
5	G. P. Pra. Shala Kholi No. 1 Dhanakal	26	G. P. Pra. Shala Kholi No. 1 Govare
6	G. P. Pra. Shala Kholi No. 1 Kusavade	27	G. P. Pra. Shala Kholi No. 1 Mala
7	G. P. Pra. Shala Kholi No. 1 Marad	28	G. P. Pra. Shala Kholi No. 1 Goshatavani
8	G. P. Pra. Shala Kholi No. 1 Humbarali	29	G. P. Pra. Shala Kholi No. 1 Nanel
9	G. P. Pra. Shala Kholi No. 1 Koyananagar	30	G. P. Pra. Shala Kholi No. 1 Bharsakhale
10	G. P. Pra. Shala Kholi No. 1 Shivandeshvar	31	G. P. Pra. Shala Kholi No. 1 Bharsakhale
11	Netaji Subhash Chandra High School Kholi No. 1 Koy	32	G. P. Pra. Shala Kholi No. 1 Vatole
12	G. P. Pra. Shala Kholi No. 1 Ainachivadi	33	G. P. Pra. Shala Kholi No. 1 Nav
13	G. P. Pra. Shala Kholi No. 1 Gokulanala	34	G. P. Pra. Shala Kholi No. 1 Nav
14	Gramapanchayat Karyalay Gokul Tarf Helavak	35	G. P. Pra. Shala Kholi No. 1 Kadoli
15	Z P Pri. School room no. 01	36	G. P. Pra. Shala Kholi No. 1 Kadoli
16	Z P SCHOOL ROOM NO. 01GOJEGOAN	37	G. P. Pra. Shala Kholi No. 1 Vanzole
17	G. P. Pra. Shala Kholi No. 1 Gojeganv	38	G. P. Pra. Shala Kholi No. 1 Baje
18	G. P. Pra. Shala Kholi No. 1 Dastan	39	G. P. Pra. Shala Kholi No. 1 Savaraghar
19	G. P. Pra. Shala Kholi No. 1 Kamaraganv	40	G. P. Pra. Shala Kholi No. 1 Maloshi
20	G. P. Pra. Shala Kholi No. 1 Helavak	41	G. P. Pra. Shala Kholi No. 1 Maloshi
21	G. P. Pra. Shala Kholi No. 1 Kendavale	42	G. P. Pra. Shala Kholi No. 1 Nivade

Contd....

Polling Station Level Election Results

Polling Station-wise Votes Secured by Overall Top Five Parties in Patan Assembly in Assembly Election (AE) under Satara Parliamentary Constituency in Maharashtra (2019)

Number of Polling Station	Winner - Desai Shambhuraj Shivajirao (SHS)	Runner-up - Satyajit Vikramsinh Patankar (NCP)	3rd - Shivaji Bhimaji Kamble (BSP)	4th - Ashokrao Tatoba Devkant (VBA)	5th - Sagar Laxman Jadhav (IND)	NOTA	Other	Total Votes Secured
36	212	45	4	10	0	4	0	275
37	159	280	2	2	1	3	0	447
38	88	38	2	0	0	3	1	132
39	292	170	6	1	2	12	5	488
40	144	97	4	10	2	4	3	264
41	186	165	3	1	1	6	3	365
42	137	143	4	2	2	5	3	296
43	120	224	4	0	2	1	0	351
44	50	180	2	4	0	2	2	240
45	235	173	4	1	2	17	3	435
46	159	207	3	1	1	4	3	378
47	16	477	0	14	0	0	1	508
48	229	104	4	0	0	1	0	338
49	285	40	3	1	1	2	3	335
50	216	117	2	1	1	0	0	337
51	317	246	7	0	1	3	3	577
52	204	190	3	7	2	6	1	413
53	87	205	4	2	3	4	3	308
54	173	126	9	6	1	9	3	327
55	144	0	0	0	0	0	0	144
56	390	408	1	12	3	3	2	819
57	306	315	1	4	0	1	0	627
58	291	193	4	1	0	2	2	493
59	113	306	1	2	1	6	4	433
60	0	308	0	0	2	4	1	315
61	198	313	3	1	2	3	3	523
62	83	138	5	1	0	0	4	231
63	129	229	1	4	2	7	6	378
64	450	302	9	8	0	9	3	781
65	217	341	2	0	2	4	2	568
66	263	124	4	0	1	3	0	395
67	147	36	1	0	4	3	3	194
68	450	113	5	1	1	6	2	578
69	201	3	0	0	0	0	0	204
70	238	204	0	3	1	1	1	448

Contd....

Polling Station Level Election Results

Winner, Runner-up and 3rd Party Position & Winning Margin According to Polling Stations in Patan Assembly in Assembly Election (AE) under Satara Parliamentary Constituency in Maharashtra (2019)

Polling Station Number	Winner Party	Winner Votes (%)	Runner-up Party	Runner-up Votes (%)	Winning Margin Votes (%)	Third Party	Third Party Votes (%)	Other Votes (%)
71	SHS	180 (73.17)	NCP	58 (23.58)	122 (49.59)	BSP	3 (1.22)	5 (2.03)
72	NCP	531 (64.21)	SHS	272 (32.89)	259 (31.32)	BSP	7 (0.85)	17 (2.06)
73	SHS	250 (51.44)	NCP	226 (46.5)	24 (4.94)	BSP	3 (0.62)	7 (1.44)
74	SHS	284 (83.04)	NCP	36 (10.53)	248 (72.51)	BSP	8 (2.34)	14 (4.09)
75	NCP	595 (54.04)	SHS	460 (41.78)	135 (12.26)	BSP	11 (1)	35 (3.18)
76	SHS	244 (51.8)	NCP	220 (46.71)	24 (5.09)	BSP	3 (0.64)	4 (0.85)
77	NCP	284 (77.17)	SHS	74 (20.11)	210 (57.06)	BSP	2 (0.54)	8 (2.17)
78	NCP	316 (66.81)	SHS	146 (30.87)	170 (35.94)	BSP	2 (0.42)	9 (1.9)
79	NCP	339 (52.4)	SHS	300 (46.37)	39 (6.03)	BSP	4 (0.62)	4 (0.62)
80	NCP	205 (56.63)	SHS	152 (41.99)	53 (14.64)	VBA	3 (0.83)	2 (0.55)
81	SHS	120 (81.08)	NCP	27 (18.24)	93 (62.84)	BSP	0 (0)	1 (0.68)
82	SHS	411 (57.16)	NCP	297 (41.31)	114 (15.85)	BSP	7 (0.97)	4 (0.56)
83	NCP	225 (63.38)	SHS	126 (35.49)	99 (27.89)	BSP	2 (0.56)	2 (0.56)
84	SHS	63 (54.31)	NCP	47 (40.52)	16 (13.79)	IND (PSP)	2 (1.72)	4 (3.45)
85	SHS	549 (61.34)	NCP	314 (35.08)	235 (26.26)	SERSNMH	16 (1.79)	16 (1.79)
86	NCP	455 (67.31)	SHS	206 (30.47)	249 (36.84)	VBA	7 (1.04)	8 (1.18)
87	NCP	394 (79.12)	SHS	87 (17.47)	307 (61.65)	BSP	5 (1)	12 (2.41)
88	NCP	76 (50.33)	SHS	67 (44.37)	9 (5.96)	BSP	4 (2.65)	4 (2.65)
89	NCP	361 (62.78)	SHS	186 (32.35)	175 (30.43)	BSP	9 (1.57)	19 (3.3)
90	NCP	367 (64.96)	SHS	178 (31.5)	189 (33.46)	BSP	7 (1.24)	13 (2.3)
91	NCP	429 (90.13)	SHS	39 (8.19)	390 (81.94)	VBA	3 (0.63)	5 (1.05)
92	NCP	343 (65.96)	SHS	150 (28.85)	193 (37.11)	BSP	7 (1.35)	20 (3.85)
93	NCP	231 (67.54)	SHS	95 (27.78)	136 (39.76)	VBA	6 (1.75)	10 (2.92)
94	SHS	122 (46.39)	NCP	122 (46.39)	0 (0)	VBA	14 (5.32)	5 (1.9)
95	NCP	240 (52.06)	SHS	214 (46.42)	26 (5.64)	VBA	2 (0.43)	5 (1.08)
96	SHS	207 (96.73)	NCP	6 (2.8)	201 (93.93)	BSP	1 (0.47)	0 (0)
97	SHS	216 (90.76)	NCP	19 (7.98)	197 (82.78)	BSP	2 (0.84)	1 (0.42)
98	NCP	179 (56.11)	SHS	138 (43.26)	41 (12.85)	VBA	1 (0.31)	1 (0.31)
99	SHS	561 (78.35)	NCP	148 (20.67)	413 (57.68)	BSP	3 (0.42)	4 (0.56)
100	SHS	372 (64.7)	NCP	186 (32.35)	186 (32.35)	BSP	5 (0.87)	12 (2.09)
101	SHS	319 (62.92)	NCP	173 (34.12)	146 (28.8)	BSP	6 (1.18)	9 (1.78)
102	NCP	621 (62.47)	SHS	338 (34)	283 (28.47)	VBA	12 (1.21)	23 (2.31)
103	NCP	319 (82.64)	SHS	56 (14.51)	263 (68.13)	VBA	3 (0.78)	8 (2.07)
104	SHS	488 (55.2)	NCP	378 (42.76)	110 (12.44)	VBA	8 (0.9)	10 (1.13)
105	SHS	308 (55)	NCP	251 (44.82)	57 (10.18)	SBBGP	1 (0.18)	0 (0)

Contd....

Socio-Economic Amenities - Rural

Access to Education Facilities

Particulars	Number of Villages (% of Population)				
	Available	Not Available	If Not Available (Distance of Nearest Facility)		
			A	B	C
Govt. Primary School	348 (100)	8 (0)	4 (0)	3 (0)	0 (0)
Private Primary School	6 (5)	350 (95)	0 (0)	0 (0)	0 (0)
Govt. Middle School	191 (75)	165 (25)	76 (12)	35 (5)	54 (7)
Private Middle School	3 (2)	353 (98)	0 (0)	0 (0)	0 (0)
Govt. Secondary School	55 (33)	301 (67)	133 (33)	64 (12)	87 (16)
Private Secondary School	6 (3)	350 (97)	6 (2)	5 (2)	0 (0)
Govt. Senior Secondary School	9 (9)	347 (91)	90 (25)	87 (26)	151 (32)
Private Senior Secondary School	1 (1)	355 (99)	7 (4)	7 (3)	4 (1)
Govt. Arts and Science Degree College	0 (0)	356 (100)	29 (9)	53 (15)	254 (66)
Private Arts and Science Degree College	0 (0)	356 (100)	3 (1)	7 (4)	10 (5)
Govt. Engineering College	0 (0)	356 (100)	6 (2)	6 (3)	294 (78)
Private Engineering College	0 (0)	356 (100)	2 (1)	5 (3)	43 (14)
Govt. Medicine College	0 (0)	356 (100)	4 (1)	5 (4)	307 (80)
Private Medicine College	0 (0)	356 (100)	0 (0)	1 (1)	39 (14)
Govt. Management Institute	0 (0)	356 (100)	4 (1)	5 (4)	307 (80)
Private Management Institute	0 (0)	356 (100)	0 (0)	1 (1)	39 (14)
Govt. Polytechnic	0 (0)	356 (100)	6 (2)	15 (6)	231 (61)
Private Polytechnic	0 (0)	356 (100)	4 (1)	10 (5)	90 (25)
Govt. Vocational Training School/ITI	1 (1)	355 (99)	17 (6)	32 (11)	244 (64)
Private Vocational Training School/ITI	3 (2)	353 (98)	13 (5)	23 (7)	24 (5)
Govt. Non Formal Training Centre	0 (0)	356 (100)	14 (4)	34 (10)	270 (73)
Private Non Formal Training Centre	0 (0)	356 (100)	7 (2)	13 (4)	18 (7)
Govt. School For Disabled	0 (0)	356 (100)	6 (2)	11 (5)	306 (84)
Private School For Disabled	0 (0)	356 (100)	0 (0)	1 (1)	32 (9)
Government Others	0 (0)	356 (100)	0 (0)	0 (0)	0 (0)
Private Others	48 (13)	308 (87)	0 (0)	0 (0)	0 (0)

Note : Distance A : Less than 5 km; B : Between 5-10 km; C : 10+ km.; Source : Data Analysis is based on 2011 Census.

DISCLAIMER

The Terms of Use and Disclaimer of Datanet India Private Limited (hereinafter referred to as "Datanet") for use of this analysis report of **Patan Assembly Constituency (Patan Vidhan Sabha)** :-

1. **Assembly Factbook™** is a Registered Trade Mark owned by Datanet.
2. All the maps are sketched and graphical representation only and have not been drawn to the scale and also not to represent the actual geographical area or boundary of the unit.
3. The data for the aforesaid analysis is based on authentic sources and has been culled from the various publications of Census, CSO and NSSO for district and block level data, various central and state government departments, Central & State Elections Commissions and the concerned Returning Officers' releases, Electoral Rolls, Election results and allied publications, internal assessment, surveys, estimates and analysis. Therefore, certain adjustment of data at micro level may have been done to arrive closer to the macro data.
4. Data have been provided on an "As Is" and "As AVAILABLE" basis
5. The colours shown in the maps or diagram and charts of a particular party, alliance or AC are indicative and do not represent them.
6. This publication which includes maps, sheets, graphs and data would be the property under copyright of Datanet only. The user may use these for its internal study, analysis and research purposes. It's public display, re-selling or any commercial uses by the user are not allowed.
7. Datanet has taken due care and caution in compilation and processing of data and allied information, but does not guarantee the accuracy, adequacy or completeness of any information/analysis and will be not responsible for any errors or omissions or for the results obtained from the use of such information/analysis.
8. All the contents for the publication have been culled from various authentic sources and Datanet reasonably believes such sources to be reliable, but does not make any representations, express or implied as to the accuracy or fitness of use of such information. The information or contents of the information/analysis do not constitute advice and should not be relied upon in making (or refraining from making) any decision. Any reliance placed upon the information provided by Datanet is the sole responsibility and strictly at the user's risk.
9. In no event will Datanet be liable for any damages (including, without limitation, damages for loss of business projects, or loss of profits) arising in contract, tort or otherwise from the use of or inability to use any of its contents, or from any action taken (or refrained from being taken) as a result of using the analysis or any of its contents. Datanet its directors, owners, editors, officials, employees, distributor and agents or any associate will not be liable for any errors in the information contained or any consequences arising from the use of the contents of the provided information/analysis.
10. If any provision of these terms and conditions is held invalid or illegal or unenforceable for any reason by any court of competent jurisdiction, such provision shall be severed and the remainder of provisions of the terms and conditions shall continue in full force and effect as if the Term of Use had been executed with the invalid, illegal or unenforceable provision eliminated.
11. If there are any discrepancies in the information provided, please bring it to attention of Datanet for suitable rectification measures.

Buy Online This Complete Book At
Datanet India eBooks Store

www.indiastatpublications.com

or go directly at

[http://www.indiastatpublications.com/
Assembly_factbook/Maharashtra/Satara/ Patan](http://www.indiastatpublications.com/Assembly_factbook/Maharashtra/Satara/Patan)

 **indiastat**elections

ISBN : 978-93-5293-319-8



9 789352 933198