



Maharashtra

# Assembly Factbook™

Akole Assembly Constituency



Key Electoral Data of Akole  
Assembly Constituency (Vidhan Sabha)

Maharashtra  
**Assembly Factbook**<sup>TM</sup>  
Akole Assembly Constituency



Akole Vidhan Sabha

## **Editor & Director**

Dr. R.K. Thukral

## **Research Editor**

Dr. Shafeeq Rahman

## **Compiled, Researched and Published by Datanet India Pvt. Ltd.**

D-100, 1st Floor,

Okhla Industrial Area, Phase-I,  
New Delhi- 110020.

Ph.: 91-11- 43580781-84

Email : support@indiastatpublications.com

Website : www.indiastatelections.com

## **Online Book Store :**

www.indiastatpublications.com

**Report No. :** AFB/MH-216-0123

**ISBN :** 978-93-5293-159-0

**First Edition :** January, 2018

**Sixth Updated Edition :** January, 2023

**Price :** Rs.11500/-

US\$ 310

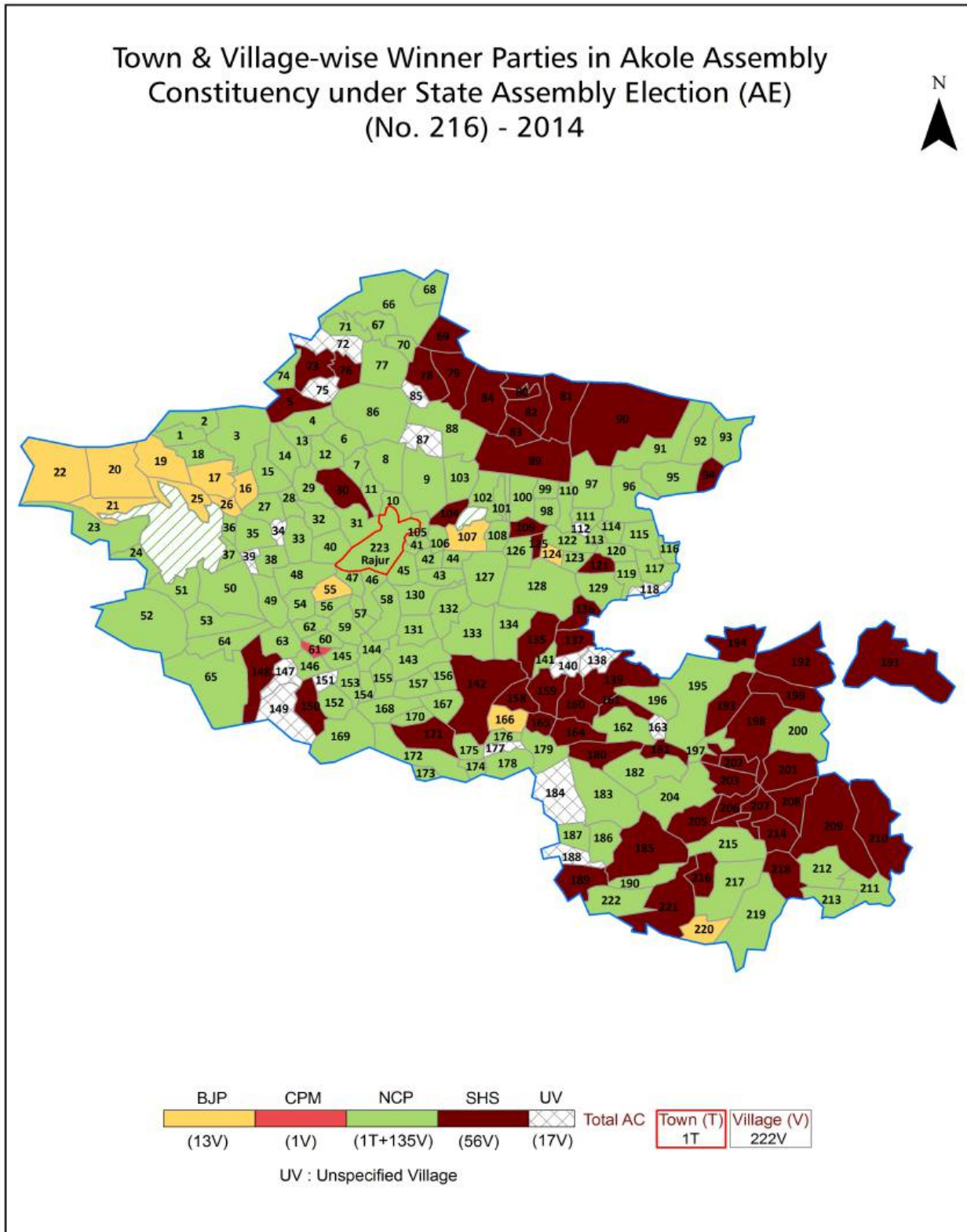
**© Datanet India Pvt. Ltd.**

All rights reserved. No part of this book may be reproduced, stored in a retrieval system or transmitted in any form or by any means, mechanical photocopying, photographing, scanning, recording or otherwise without the prior written permission of the publisher. Please refer to Disclaimer at page no. 227 for the use of this publication.

Printed in India

No.	Particulars	Page No.
	<b>Introduction</b>	
1	Assembly Constituency - (Vidhan Sabha) at a Glance   Features of Assembly as per Delimitation Commission of India (2008)	1-2
	<b>Location and Political Maps</b>	
2	Location Map   Boundaries of Assembly Constituency - (Vidhan Sabha) in District   Boundaries of Assembly Constituency under Parliamentary Constituency - (Lok Sabha)   Town & Village-wise Winner Parties- 2019-PE, 2019-AE, 2014-PE, 2014-AE, 2009-PE and 2009-AE	3-10
	<b>Administrative Setup (2011)</b>	
3	District   Sub-district   Towns   Villages   Inhabited Villages   Uninhabited Villages   Village Panchayat   Intermediate Panchayat	11-21
	<b>Demographics (2011)</b>	
4	Population   Households   Rural/Urban Population   Towns and Villages by Population Size   Sex Ratio (Total & 0-6 Years)   Religious Population   Social Population   Literacy Rate	22-23
	<b>Electoral Features</b>	
5	Important Dates of Last Elections Held   Electors by Gender   Service Electors   Voters   Voters Turnout   Polling Stations & Average Number of Electors per Polling Station   Electors by Age Group   Present Elected Representatives	24-29
	<b>Historical Summary Election Results</b>	
6	Vote Share of Major Parties   Winning Margin (Number & Percentage)   Polarity of Parties   Summary Result of Assembly Segment of Parliamentary Elections 2019, 2014 and 2009   Summary Result of Assembly Elections 2019, 2014 and 2009	30-39
	<b>Polling Station Level Election Results</b>	
7	Name and Number of Polling Station 2019-PE, 2019-AE, 2014-PE, 2014-AE, 2009-PE and 2009-AE   Polling Station-wise Electors, Voters & Voters Turnout 2019-PE, 2019-AE, 2014-PE, 2014-AE, 2009-PE and 2009-AE   Polling Station wise Elections Results 2019-PE, 2019-AE, 2014-PE, 2014-AE, 2009-PE and 2009-AE	40-205
	<b>Share of Assembly Constituency</b>	
8	Share of Assembly Constituency - (Vidhan Sabha) in State, District and Parliamentary Constituency - (Lok Sabha)	206
	<b>Socio-Economic Amenities (2011)</b>	
9	Access to Administrative Units   Agricultural, Manufacturing and Industrial Commodities   Demographic Indicators   Education   Health & Manpower   Drinking Water Supply   Sanitation   Entertainment and Recreations Infrastructure   Power   Food Allocation Distribution and Marketing of Agriculture Commodities Infrastructure   Transport and Road Infrastructure   Communication   Banking and Financial Services   Land Use   Irrigation Source	208-222
10	<b>Abbreviation &amp; Sources</b>	224-225
11	<b>Disclaimer</b>	227

Location & Political Map



## Administrative Setup

### List of Village Panchayat & Intermediate Panchayat (Block) Name - 2011

Village Name	Village Panchayat Name	Intermediate Panchayat Name
Abhalwadi	Akalapur	Sangamner
Abit Khind	-	Akola
Agar	Gardani	Akola
Agastinagar	-	Akola
Akalapur	Akalapur	Sangamner
Akola	-	Akola
Ambad	-	Akola
Ambevangan	-	Akola
Ambhol	Ambhol	Akola
Ambi Dumala	-	Sangamner
Ambi Khalasa	-	Sangamner
Ambikanagar	Dhokri	Akola
Ambit	-	Akola
Aurangpur	-	Akola
Babhul Wandi	-	Akola
Badgi	-	Akola
Bahirwadi	Bahirwadi	Akola
Balthan	Gondoshi	Akola
Baravwadi	Maveshi	Akola
Bari	-	Akola
Belapur	-	Akola
Bhandardara	-	Akola
Bhojadarawadi	-	Akola
Bhojadari	-	Sangamner
Bholewadi	-	Akola
Bitaka	Jaikwadi	Akola
Borbanwadi	-	Sangamner
Bori	-	Akola
Bota	-	Sangamner

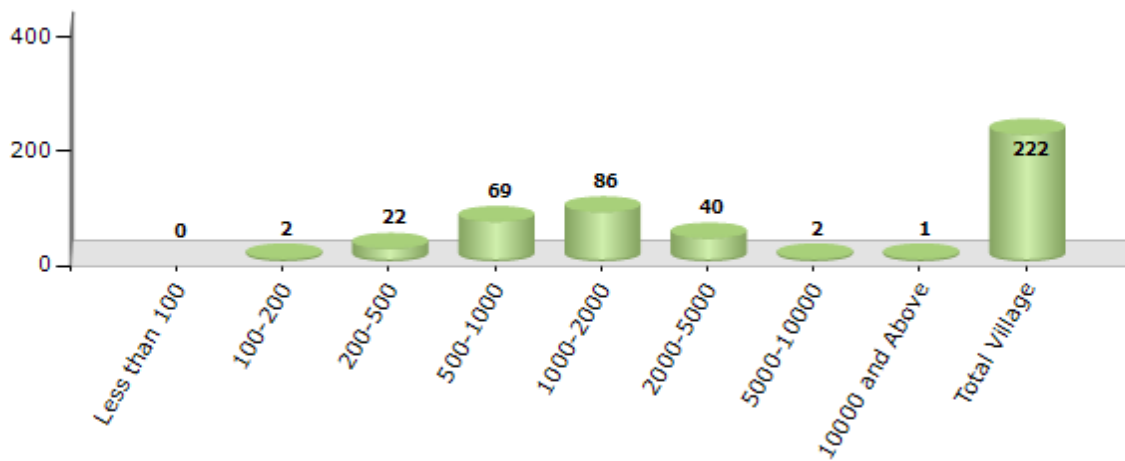
Contd....

## Demographics

### Number of Villages by Population Size - 2011

Less than 100	100-200	200-500	500-1000	1000-2000	2000-5000	5000-10000	10000 and Above	Total Village
0	2	22	69	86	40	2	1	222

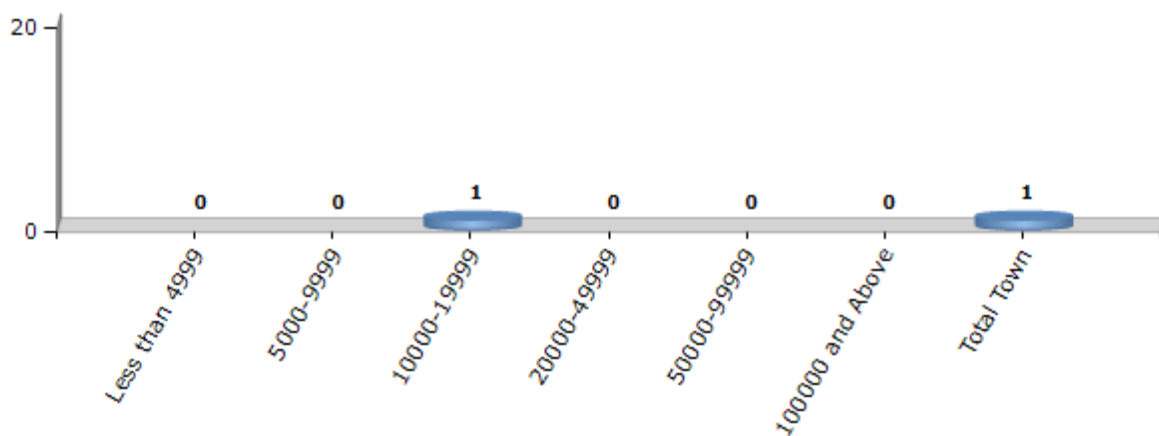
Number of Villages by Population Size - 2011



### Number of Towns by Population Size - 2011

Less than 4999	5000-9999	10000-19999	20000-49999	50000-99999	100000 and Above	Total Town
0	0	1	0	0	0	1

Number of Towns by Population Size - 2011

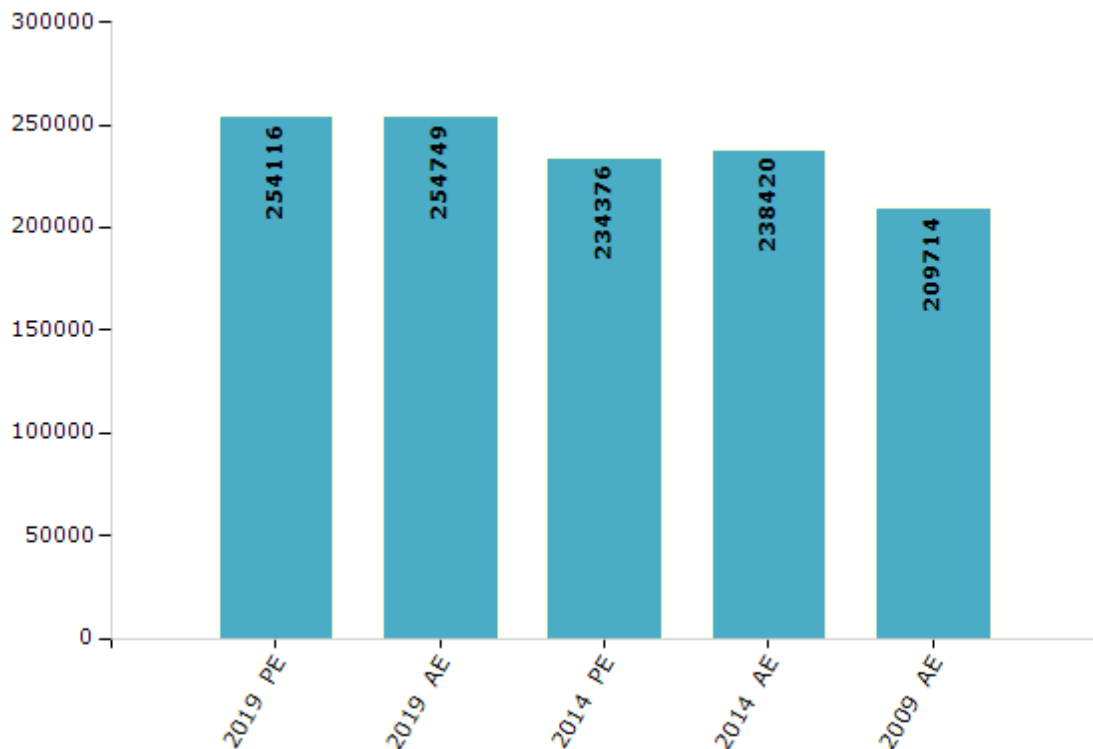


**Electoral Features**

**Electors by Male & Female**

Year	Male	Female	Others	Total	Year	Male	Female	Others	Total
2019 PE	133321	120795	0	254116	1999 AE	-	-	-	-
2019 AE	133494	121255	0	254749	1995 AE	-	-	-	-
2014 PE	124177	110198	1	234376	1990 AE	-	-	-	-
2014 AE	126070	112350	0	238420	1985 AE	-	-	-	-
2009 PE	-	-	-	-	1980 AE	-	-	-	-
2009 AE	108529	101185	-	209714	1978 AE	-	-	-	-
2004 PE	-	-	-	-	1972 AE	-	-	-	-
2004 AE	-	-	-	-	1967 AE	-	-	-	-
1999 PE	-	-	-	-	1962 AE	-	-	-	-

Number of Electors



**Note :** AE : Assembly Election, PE : Assembly Segment of Parliamentary Election

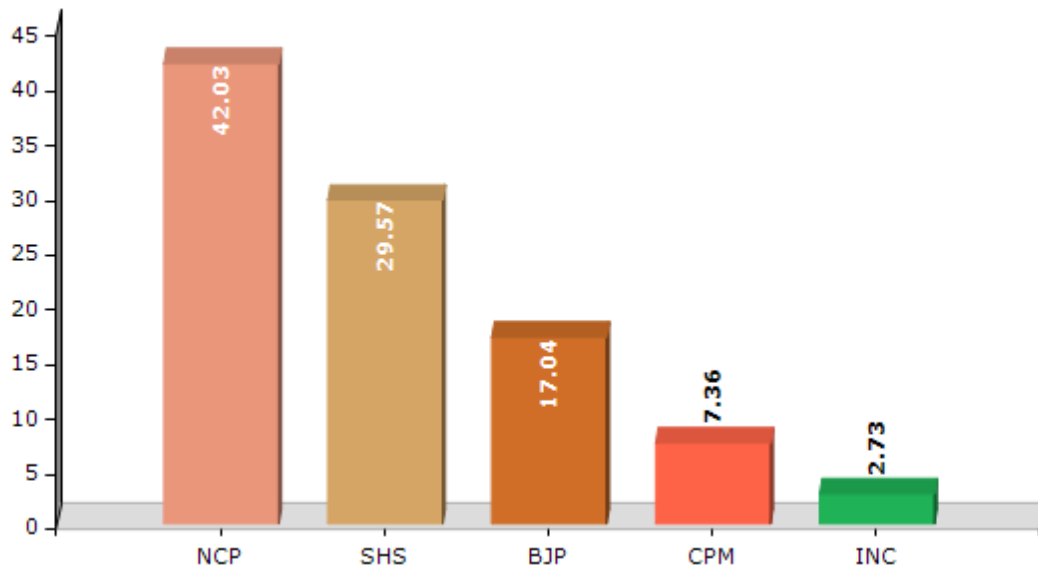


## Historical Summary Election Results

### Summary Result of Assembly Election - 2014

Candidate Name	Party	Votes	Votes %
Pichad Vaibhav Madhukar	NCP	67696	42.03
Talpade Madhukar Shankar	SHS	47634	29.57
Ashok Yashwant Bhangare	BJP	27446	17.04
Bhangre Namdev Ganga	CPM	11861	7.36
Bhangare Satish Namdeo	INC	4391	2.73
	NOTA	2051	1.27

Votes Percentage of Top Parties - 2014



## Polling Station Level Election Results

### Number and Name of Polling Stations (PS) (2019 AE)

Number of Polling Stations	Name of Polling Stations	Number of Polling Stations	Name of Polling Stations
1	Pachpathawadi Z.P.School East West Building room No.1from east	22	Sawargaon pat Z.P.Marathi School North South room No.4 From south
2	Tiradhe Z.P.School Individual Separate Room	23	Samsherpur Z.P.School West Side Anganwadi Building Separate Room
3	Shivajinagar (Vaitagwadi) Z.P.School southern Side separate Room	24	Samsherpur Z.P.School East West New Building room No 4 From East
4	Z.P. School Pedhewadi from Southern side Building Separate Room	25	Samsherpur Z.P.School East West new building Room No 2 From East
5	Kokanwadi Z.P. School East Side Individual separate Room	26	Tahakari Z.P.School East West Building room No3 from east
6	Ekdara Z.P. School south north bulding room no 1 From North	27	Tahakari Z.P.School East West Building room No 5 from east
7	Pimpaldarawadi Z.P.School North South Building room No.1 from south	28	Muthalne Z.P.School Western Side Individual Separate room
8	Padoshi Z.P.School East West Bulding room No 1 from East	29	Pagirwadi Z.P.School South North Building room No2 from South
9	Mhalungi Z.P.School Individual separate room	30	Kombhalne Z.P.School East West Building room No.2 from west
10	Bitaka Z.P.School south north bulding room no 1 north	31	Sherankhel Z.P.School East West Building room No.3 From West
11	Shenit Bk Z.P.School North South Biulding room no 1 from north	32	Babhulwandi Z.P.School East West Building room No.1 from east
12	Shenit Kh Z.P.School North South Building room no 1 from south	33	Devgaon Z.P.School Southern Side East West Building room No.2 from east
13	Khirvire Z.P.School East West Building room No.2 from east	34	Pabhulwandi Z.P.School northern side Individual Separate room
14	Khirvire Z.P.School East West Building room No 6 from east	35	Ladgaon Z.P.School Building which has one room
15	Khirvire Z.P.School East West Building Room No. 4 from east	36	Ambevangon Z P School East west building room no 1 From west
16	Sangvi Z.P.School East West Building Room No.1 from West	37	Manhere Z.P.School East West Building room No.3 from east
17	Sangvi Z.P.School North South Building No.2 Room No.1 from North	38	Waranghushi Z.P.School North South Building room No.2 from north
18	Keli Rumhanwadi Z.P.School East West Building room No.2 from east	39	Waranghushi Z.P.School North South Building room No.4 from North
19	Nagwadi Z.P.School Individual Separate Room	40	Waranghushi Z.P.School North South Building room No.2 from North
20	Ghodserwadi Z.P.School East West Building room No.2 from east	41	Chichondi Z.P.School East West Building room No. 2 from east
21	Sawargaon pat Z.P.Marathi School North South Building room No1 from South	42	Pendshet Z.P.School North South Building room No.1 from South

Contd....

**Polling Station Level Election Results**

**Polling Station-wise Votes Secured by Overall Top Five Parties in Akole Assembly in Assembly Election (AE) under Shirdi Parliamentary Constituency in Maharashtra (2019)**

Number of Polling Station	Winner - Dr. Kiran Yamaji Lahamate (NCP)	Runner-up - Pichad Vaibhav Madhukarrao (BJP)	3rd - Dipak Yashwant Pathave (VBA)	4th - Ghane Bhiva Rama (IND)	5th - ( )	NOTA	Other	Total Votes Secured
36	234	173	8	6		5		426
37	400	406	17	17		7		847
38	213	172	8	36		10		439
39	274	152	6	25		17		474
40	247	301	13	27		7		595
41	572	194	6	5		13		790
42	298	132	4	1		3		438
43	267	137	5	3		4		416
44	517	78	7	14		13		629
45	472	152	9	11		39		683
46	431	271	12	11		18		743
47	313	320	3	8		15		659
48	165	186	4	4		2		361
49	287	262	12	8		13		582
50	257	133	11	2		16		419
51	295	122	18	10		9		454
52	485	151	5	10		12		663
53	400	268	11	4		7		690
54	301	144	4	3		13		465
55	256	216	10	8		6		496
56	397	217	7	5		15		641
57	376	67	2	4		9		458
58	554	242	19	6		16		837
59	358	184	3	4		12		561
60	251	230	5	3		7		496
61	207	442	7	5		11		672
62	195	84	4	3		1		287
63	222	33	1	3		6		265
64	390	272	5	4		9		680
65	282	297	3	5		2		589
66	203	243	4	5		1		456
67	130	176	3	3		8		320
68	90	130	5	4		2		231
69	410	171	7	1		13		602
70	278	68	5	1		7		359

Contd....

## Polling Station Level Election Results

**Winner, Runner-up and 3rd Party Position & Winning Margin According to Polling Stations in Akole Assembly in Assembly Election (AE) under Shirdi Parliamentary Constituency in Maharashtra (2019)**

Polling Station Number	Winner Party	Winner Votes (%)	Runner-up Party	Runner-up Votes (%)	Winning Margin Votes (%)	Third Party	Third Party Votes (%)	Other Votes (%)
71	NCP	409 (56.73)	BJP	299 (41.47)	110 (15.26)	IND (GBR)	6 (0.83)	7 (0.97)
72	NCP	366 (50.34)	BJP	337 (46.35)	29 (3.99)	VBA	6 (0.83)	18 (2.48)
73	BJP	219 (52.9)	NCP	188 (45.41)	31 (7.49)	VBA	2 (0.48)	5 (1.21)
74	NCP	408 (63.55)	BJP	212 (33.02)	196 (30.53)	IND (GBR)	4 (0.62)	18 (2.8)
75	NCP	415 (58.95)	BJP	278 (39.49)	137 (19.46)	IND (GBR)	5 (0.71)	6 (0.85)
76	NCP	303 (74.08)	BJP	102 (24.94)	201 (49.14)	VBA	2 (0.49)	2 (0.49)
77	NCP	342 (74.51)	BJP	114 (24.84)	228 (49.67)	VBA	1 (0.22)	2 (0.44)
78	NCP	581 (79.92)	BJP	142 (19.53)	439 (60.39)	VBA	3 (0.41)	1 (0.14)
79	NCP	455 (71.99)	BJP	159 (25.16)	296 (46.83)	VBA	14 (2.22)	4 (0.63)
80	BJP	303 (59.3)	NCP	205 (40.12)	98 (19.18)	VBA	1 (0.2)	2 (0.39)
81	NCP	540 (66.01)	BJP	270 (33.01)	270 (33)	VBA	2 (0.24)	6 (0.73)
82	NCP	448 (59.57)	BJP	297 (39.49)	151 (20.08)	IND (GBR)	3 (0.4)	4 (0.53)
83	NCP	312 (77.23)	BJP	82 (20.3)	230 (56.93)	IND (GBR)	4 (0.99)	6 (1.49)
84	NCP	632 (66.67)	BJP	304 (32.07)	328 (34.6)	VBA	4 (0.42)	8 (0.84)
85	NCP	375 (54.03)	BJP	269 (38.76)	106 (15.27)	VBA	43 (6.2)	7 (1.01)
86	NCP	739 (72.38)	BJP	259 (25.37)	480 (47.01)	VBA	9 (0.88)	14 (1.37)
87	NCP	465 (53.76)	BJP	361 (41.73)	104 (12.03)	VBA	11 (1.27)	28 (3.24)
88	NCP	317 (52.14)	BJP	260 (42.76)	57 (9.38)	VBA	14 (2.3)	17 (2.8)
89	NCP	322 (54.58)	BJP	247 (41.86)	75 (12.72)	VBA	9 (1.53)	12 (2.03)
90	NCP	414 (75.14)	BJP	128 (23.23)	286 (51.91)	VBA	4 (0.73)	5 (0.91)
91	NCP	378 (74.56)	BJP	113 (22.29)	265 (52.27)	VBA	6 (1.18)	10 (1.97)
92	NCP	667 (75.54)	BJP	187 (21.18)	480 (54.36)	VBA	11 (1.25)	18 (2.04)
93	NCP	531 (67.47)	BJP	236 (29.99)	295 (37.48)	VBA	8 (1.02)	12 (1.52)
94	NCP	496 (54.81)	BJP	392 (43.31)	104 (11.5)	VBA	9 (0.99)	8 (0.88)
95	NCP	582 (64.31)	BJP	315 (34.81)	267 (29.5)	VBA	5 (0.55)	3 (0.33)
96	NCP	416 (53.96)	BJP	340 (44.1)	76 (9.86)	VBA	6 (0.78)	9 (1.17)
97	NCP	438 (71.34)	BJP	171 (27.85)	267 (43.49)	VBA	1 (0.16)	4 (0.65)
98	NCP	476 (65.75)	BJP	237 (32.73)	239 (33.02)	VBA	5 (0.69)	6 (0.83)
99	NCP	435 (66.01)	BJP	215 (32.63)	220 (33.38)	VBA	4 (0.61)	5 (0.76)
100	NCP	577 (77.55)	BJP	149 (20.03)	428 (57.52)	VBA	14 (1.88)	4 (0.54)
101	NCP	507 (75.56)	BJP	158 (23.55)	349 (52.01)	VBA	1 (0.15)	5 (0.75)
102	NCP	595 (69.92)	BJP	240 (28.2)	355 (41.72)	VBA	6 (0.71)	10 (1.18)
103	NCP	572 (71.68)	BJP	218 (27.32)	354 (44.36)	VBA	2 (0.25)	6 (0.75)
104	NCP	613 (72.2)	BJP	218 (25.68)	395 (46.52)	VBA	5 (0.59)	13 (1.53)
105	NCP	536 (75.49)	BJP	153 (21.55)	383 (53.94)	VBA	19 (2.68)	2 (0.28)

Contd....

**Socio-Economic Amenities - Rural**

**Access to Education Facilities**

Particulars	Number of Villages (% of Population)				
	Available	Not Available	If Not Available (Distance of Nearest Facility)		
			A	B	C
Govt. Primary School	222 (100)	0 (0)	0 (0)	0 (0)	0 (0)
Private Primary School	6 (12)	216 (88)	0 (0)	0 (0)	0 (0)
Govt. Middle School	150 (85)	72 (15)	46 (10)	8 (1)	15 (3)
Private Middle School	4 (9)	218 (91)	0 (0)	2 (0)	1 (0)
Govt. Secondary School	80 (57)	142 (43)	33 (9)	32 (9)	43 (14)
Private Secondary School	18 (17)	204 (83)	14 (4)	6 (2)	2 (0)
Govt. Senior Secondary School	33 (33)	189 (67)	30 (11)	56 (22)	63 (20)
Private Senior Secondary School	3 (7)	219 (93)	7 (2)	20 (6)	11 (3)
Govt. Arts and Science Degree College	0 (0)	222 (100)	15 (6)	29 (13)	122 (58)
Private Arts and Science Degree College	0 (0)	222 (100)	5 (2)	18 (6)	33 (15)
Govt. Engineering College	0 (0)	222 (100)	4 (2)	9 (6)	107 (48)
Private Engineering College	0 (0)	222 (100)	3 (2)	5 (2)	94 (41)
Govt. Medicine College	0 (0)	222 (100)	0 (0)	3 (2)	137 (64)
Private Medicine College	0 (0)	222 (100)	1 (1)	0 (0)	81 (33)
Govt. Management Institute	0 (0)	222 (100)	0 (0)	3 (2)	137 (64)
Private Management Institute	0 (0)	222 (100)	1 (1)	0 (0)	81 (33)
Govt. Polytechnic	0 (0)	222 (100)	2 (2)	0 (0)	101 (51)
Private Polytechnic	0 (0)	222 (100)	1 (1)	3 (2)	115 (45)
Govt. Vocational Training School/ITI	3 (7)	219 (93)	11 (5)	23 (9)	135 (57)
Private Vocational Training School/ITI	1 (0)	221 (100)	6 (3)	5 (2)	38 (17)
Govt. Non Formal Training Centre	0 (0)	222 (100)	6 (3)	13 (5)	166 (73)
Private Non Formal Training Centre	0 (0)	222 (100)	0 (0)	1 (0)	36 (18)
Govt. School For Disabled	2 (8)	220 (92)	2 (2)	9 (6)	165 (65)
Private School For Disabled	0 (0)	222 (100)	4 (2)	1 (0)	39 (18)
Government Others	0 (0)	222 (100)	0 (0)	0 (0)	0 (0)
Private Others	2 (1)	220 (99)	0 (0)	0 (0)	0 (0)

Note : Distance A : Less than 5 km; B : Between 5-10 km; C : 10+ km.; Source : Data Analysis is based on 2011 Census.

## DISCLAIMER

The Terms of Use and Disclaimer of Datanet India Private Limited (hereinafter referred to as "Datanet") for use of this analysis report of **Akole Assembly Constituency (Akole Vidhan Sabha)** :-

1. **Assembly Factbook™** is a Registered Trade Mark owned by Datanet.
2. All the maps are sketched and graphical representation only and have not been drawn to the scale and also not to represent the actual geographical area or boundary of the unit.
3. The data for the aforesaid analysis is based on authentic sources and has been culled from the various publications of Census, CSO and NSSO for district and block level data, various central and state government departments, Central & State Elections Commissions and the concerned Returning Officers' releases, Electoral Rolls, Election results and allied publications, internal assessment, surveys, estimates and analysis. Therefore, certain adjustment of data at micro level may have been done to arrive closer to the macro data.
4. Data have been provided on an "As Is" and "As AVAILABLE" basis
5. The colours shown in the maps or diagram and charts of a particular party, alliance or AC are indicative and do not represent them.
6. This publication which includes maps, sheets, graphs and data would be the property under copyright of Datanet only. The user may use these for its internal study, analysis and research purposes. It's public display, re-selling or any commercial uses by the user are not allowed.
7. Datanet has taken due care and caution in compilation and processing of data and allied information, but does not guarantee the accuracy, adequacy or completeness of any information/analysis and will be not responsible for any errors or omissions or for the results obtained from the use of such information/analysis.
8. All the contents for the publication have been culled from various authentic sources and Datanet reasonably believes such sources to be reliable, but does not make any representations, express or implied as to the accuracy or fitness of use of such information. The information or contents of the information/analysis do not constitute advice and should not be relied upon in making (or refraining from making) any decision. Any reliance placed upon the information provided by Datanet is the sole responsibility and strictly at the user's risk.
9. In no event will Datanet be liable for any damages (including, without limitation, damages for loss of business projects, or loss of profits) arising in contract, tort or otherwise from the use of or inability to use any of its contents, or from any action taken (or refrained from being taken) as a result of using the analysis or any of its contents. Datanet its directors, owners, editors, officials, employees, distributor and agents or any associate will not be liable for any errors in the information contained or any consequences arising from the use of the contents of the provided information/analysis.
10. If any provision of these terms and conditions is held invalid or illegal or unenforceable for any reason by any court of competent jurisdiction, such provision shall be severed and the remainder of provisions of the terms and conditions shall continue in full force and effect as if the Term of Use had been executed with the invalid, illegal or unenforceable provision eliminated.
11. If there are any discrepancies in the information provided, please bring it to attention of Datanet for suitable rectification measures.

**Buy Online This Complete Book At  
Datanet India eBooks Store**

[www.indiastatpublications.com](http://www.indiastatpublications.com)

or go directly at

[http://www.indiastatpublications.com/  
Assembly\\_factbook/Maharashtra/Shirdi/ Akole](http://www.indiastatpublications.com/Assembly_factbook/Maharashtra/Shirdi/Akole)

 **indiastat**elections

ISBN : 978-93-5293-159-0



9 789352 931590