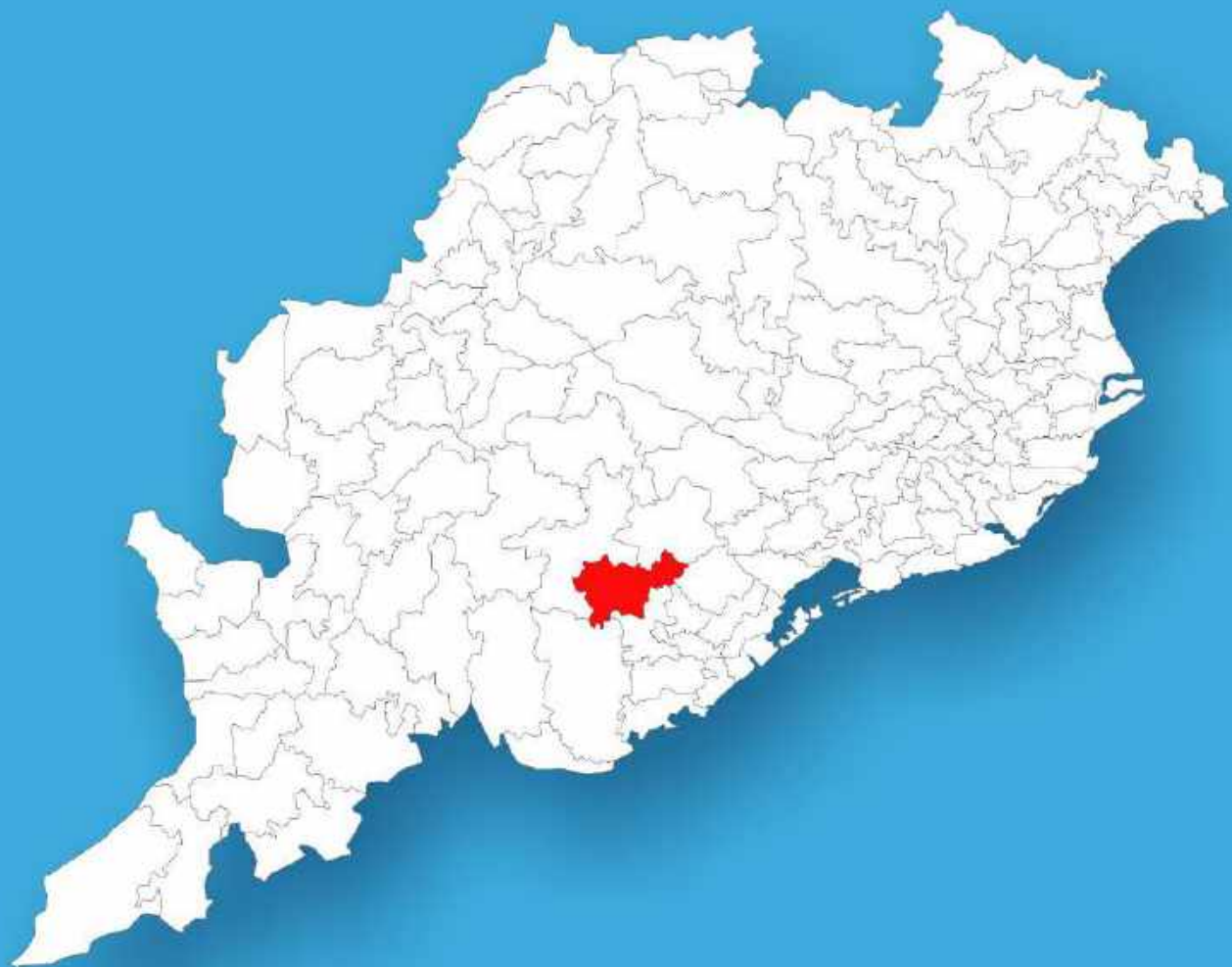




Odisha

Assembly Factbook™

Surada Assembly Constituency



Key Electoral Data of Surada
Assembly Constituency (Vidhan Sabha)

Odisha

Assembly Factbook™

Surada Assembly Constituency



Surada Vidhan Sabha

Editor & Director

Dr. R.K. Thukral

Research Editor

Dr. Shafeeq Rahman

Compiled, Researched and Published by Datanet India Pvt. Ltd.

D-100, 1st Floor,

Okhla Industrial Area, Phase-I,
New Delhi- 110020.

Ph.: 91-11- 43580781-84

Email : support@indiastatpublications.com

Website : www.indiastatelections.com

Online Book Store :

www.indiastatpublications.com

Report No. : AFB/OD-129-0125

ISBN : 978-93-5301-917-4

First Edition : January, 2018

Eighth Updated Edition : January, 2025

Price : Rs. 11500/-

US\$ 310

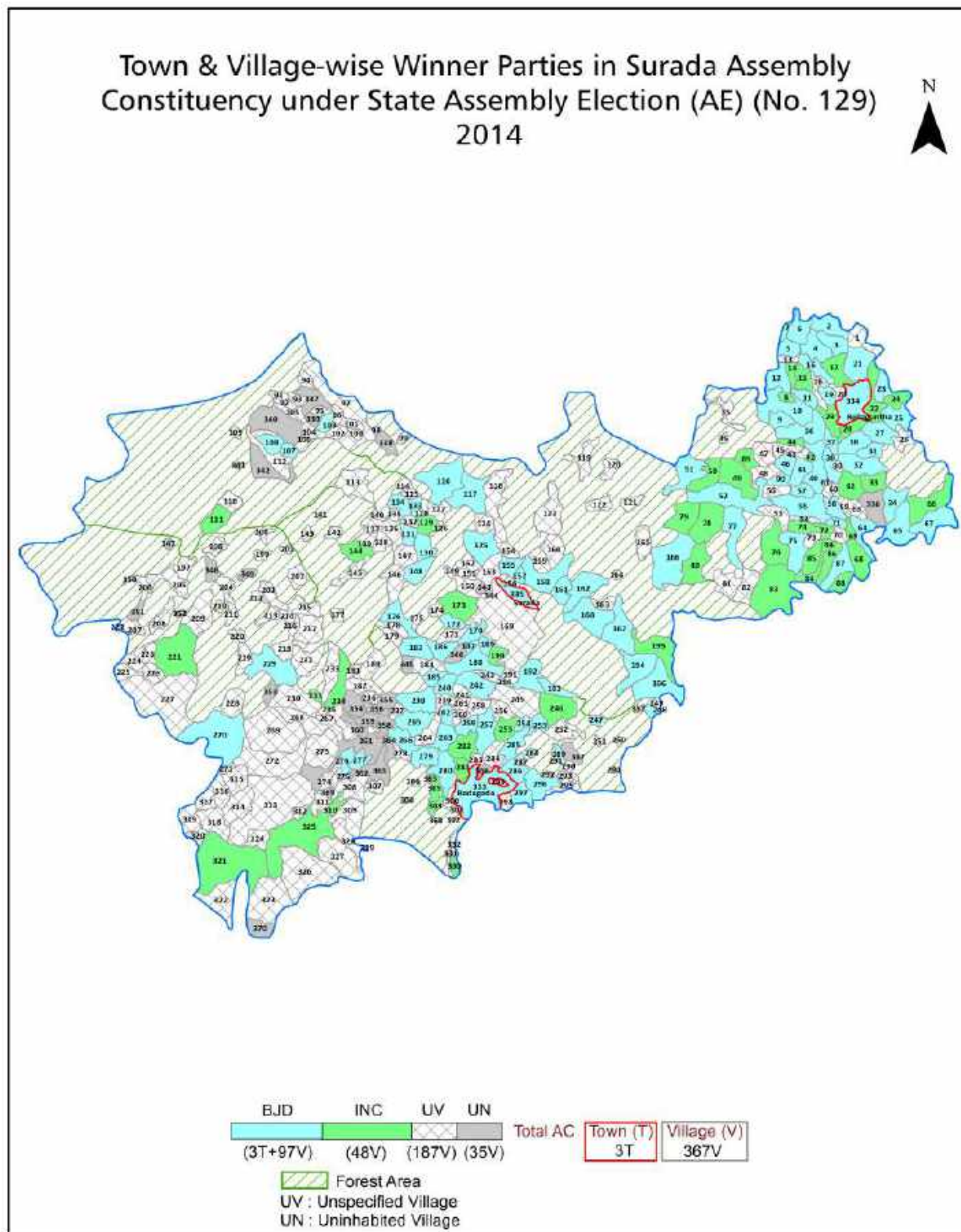
© Datanet India Pvt. Ltd.

All rights reserved. No part of this book may be reproduced, stored in a retrieval system or transmitted in any form or by any means, mechanical photocopying, photographing, scanning, recording or otherwise without the prior written permission of the publisher. Please refer to Disclaimer at page no. 233 for the use of this publication.

Printed in India

No.	Particulars	Page No.
	Introduction	
1	Assembly Constituency - (Vidhan Sabha) at a Glance Features of Assembly as per Delimitation Commission of India (2008)	1-2
	Location and Political Maps	
2	Location Map Boundaries of Assembly Constituency - (Vidhan Sabha in District Boundaries of Assembly Constituency under Parliamentary Constituency - (Lok Sabha) Town & Village-wise Winner Parties- 2024-PE, 2024-AE, 2019-PE, 2019-AE, 2014-PE, 2014-AE, 2009-PE and 2009-AE	3-11
	Administrative Setup (2011)	
3	District Sub-district Towns Villages Inhabited Villages Uninhabited Villages Village Panchayat Intermediate Panchayat	12-28
	Demographics (2011)	
4	Population Households Rural/Urban Population Towns and Villages by Population Size Sex Ratio (Total & 0-6 Years) Religious Population Social Population Literacy Rate	29-30
	Electoral Features	
5	Important Dates of Last Elections Held Electors by Gender Service Electors Voters Voters Turnout Polling Stations & Average Number of Electors per Polling Station Electors by Age Group Present Elected Representatives	31-36
	Historical Summary Election Results	
6	Vote Share of Major Parties Winning Margin (Number & Percentage Polarity of Parties Summary Result of Assembly Segment of Parliamentary Elections 2024, 2019, 2014, 2009, 2004 and 1999 Summary Result of Assembly Elections 2024, 2019, 2014, 2009, 2004, 2000, 1995, 1990, 1985, 1980, 1977, 1974, 1971, 1967, 1961 and 1957	37-60
	Polling Station Level Election Results	
7	Name and Number of Polling Station 2024-PE, 2024-AE, 2019-PE, 2019-AE, 2014-PE, 2014-AE, 2009-PE and 2009-AE Polling Station-wise Electors, Voters & Voters Turnout 2024-PE, 2024-AE, 2019-PE, 2019-AE, 2014-PE, 2014-AE, 2009-PE and 2009-AE Polling Station wise Elections Results 2024-PE, 2024-AE, 2019-PE, 2019-AE, 2014-PE, 2014-AE, 2009-PE and 2009-AE	61-212
	Share of Assembly Constituency	
8	Share of Assembly Constituency - (Vidhan Sabha) in State, District and Parliamentary Constituency - (Lok Sabha)	213
	Socio-Economic Amenities (2011)	
9	Access to Administrative Units Agricultural, Manufacturing and Industrial Commodities Demographic Indicators Education Health & Manpower Drinking Water Supply Sanitation Entertainment and Recreations Infrastructure Power Food Allocation Distribution and Marketing of Agriculture Commodities Infrastructure Transport and Road Infrastructure Communication Banking and Financial Services Land Use Irrigation Source	215-229
10	Abbreviation & Sources	230-231
11	Disclaimer	233

Location & Political Map



Administrative Setup

List of Village Panchayat & Intermediate Panchayat (Block) Name - 2011

Village Name	Village Panchayat Name	Intermediate Panchayat Name
Adipanka	Gajalabadi	Surada
Ambadoli	Kshatriyabarapur	Bellaguntha
Ambapua	Ambapua	Bellaguntha
Ambiliamba	Merikote	Surada
Amrutulu	Amrutulu	Surada
Anandapur	Badabadangi	Surada
Arakhadiha	Raibandha	Surada
Asurabandha	Asurbandha	Surada
B.Kotibadi	Hukuma	Surada
Badabadangi	Badabadangi	Surada
Badaborasingi	Badaborasingi	Bellaguntha
Badadodanga	Sasan	Bellaguntha
Badagochha	Badagochha	Surada
Badapada	Badapada	Bellaguntha
Badasadara	Khairaputti	Bellaguntha
Baduapalli	Palakatu	Surada
Baghalingi	Borasingi	Surada
Bahadapadar	Goudagoth	Surada
Bahukapalli	Hukuma	Surada
Baimela	Gajalabadi	Surada
Baishnabakotibadi	Gopalpursasan	Surada
Bajirima	Gajalabadi	Surada
Bajragada	Ambapua	Bellaguntha
Baladi	Inginathi	Bellaguntha
Balasi	Asurbandha	Surada
Balibhaga	Netanga	Bellaguntha
Balinala	Goudagoth	Surada
Balipadar	Goudagoth	Surada
Balipadarnuasahi	Balarampur	Dharakote

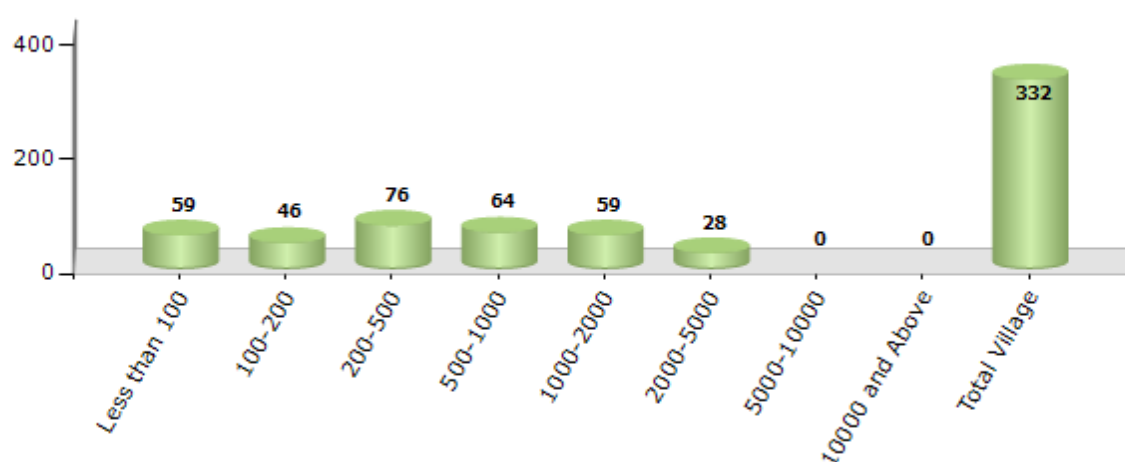
Contd....

Demographic

Number of Villages by Population Size - 2011

Less than 100	100-200	200-500	500-1000	1000-2000	2000-5000	5000-10000	10000 and Above	Total Village
59	46	76	64	59	28	0	0	332

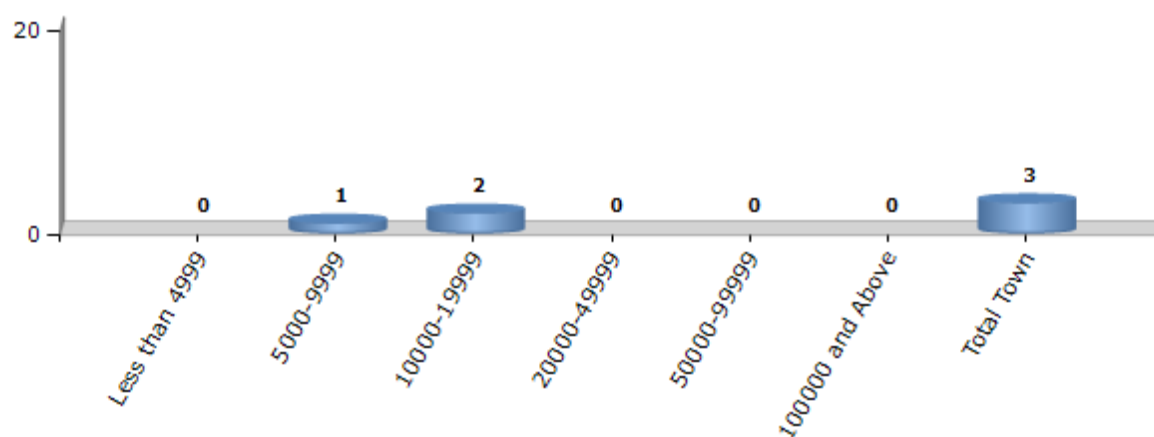
Number of Villages by Population Size - 2011



Number of Towns by Population Size - 2011

Less than 4999	5000-9999	10000-19999	20000-49999	50000-99999	100000 and Above	Total Town
0	1	2	0	0	0	3

Number of Towns by Population Size - 2011



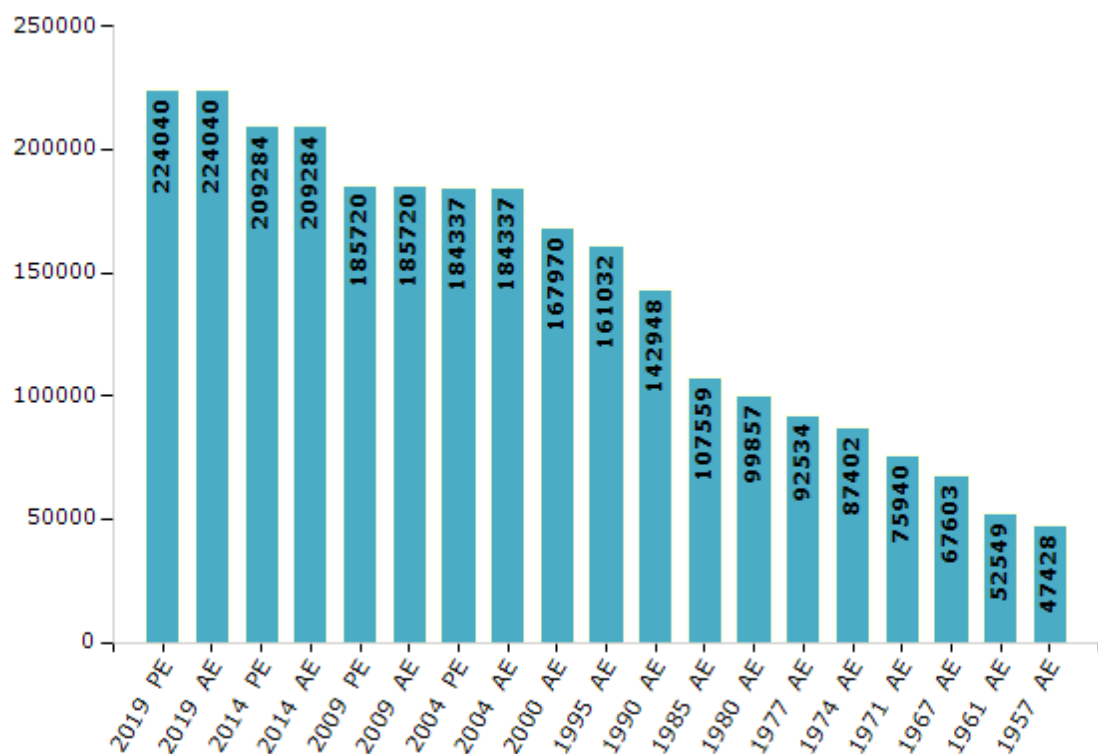
Electoral Features

Electors by Male & Female

Year	Male	Female	Others	Total
2019 PE	118815	105209	16	224040
2019 AE	118815	105209	16	224040
2014 PE	111546	97732	6	209284
2014 AE	111545	97733	6	209284
2009 PE	97409	88311	-	185720
2009 AE	97409	88311	-	185720
2004 PE	95426	88911	-	184337
2004 AE	95426	88911	-	184337
2000 AE	87196	80774	-	167970
1999 PE	-	-	-	-
1995 AE	84335	76697	-	161032

Year	Male	Female	Others	Total
1990 AE	75438	67510	-	142948
1985 AE	55694	51865	-	107559
1980 AE	51327	48530	-	99857
1977 AE	47765	44769	-	92534
1974 AE	45285	42117	-	87402
1971 AE	38656	37284	-	75940
1967 AE	67603	0	-	67603
1961 AE	52549	0	-	52549
1957 AE	47428	0	-	47428
1952 AE	-	-	-	-

Number of Electors



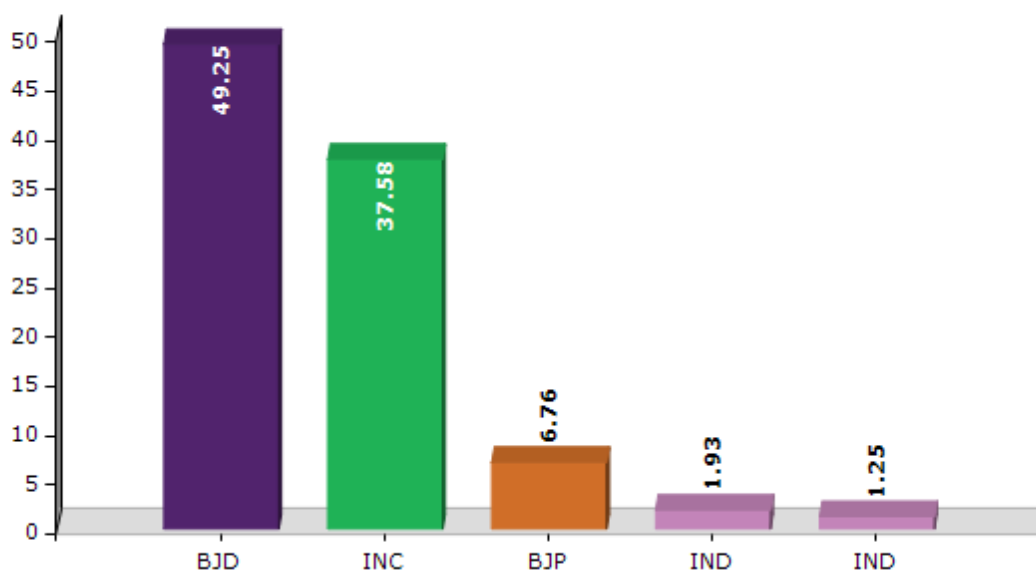
Note : AE : Assembly Election, PE : Assembly Segment of Parliamentary Election

Historical Summary Election Results

Summary Result of Assembly Election - 2014

Candidate Name	Party	Votes	Votes %
Purna Chandra Swain	BJD	67546	49.25
Basanta Kumar Bisoyi	INC	51546	37.58
Bhagabana Panda	BJP	9270	6.76
Sunil Kumar Mohanti	IND	2652	1.93
Dayanidhi Gouda	IND	1712	1.25
Purna Chandra Patra	IND	1677	1.22
	NOTA	2745	2

Votes Percentage of Top Parties - 2014



Polling Station Level Election Results

Number and Name of Polling Stations (PS) (2019 AE)

Number of Polling Stations	Name of Polling Stations	Number of Polling Stations	Name of Polling Stations
1	Gochha-1	22	Jayasingi-1
2	Gochha	23	Jayasingi-2
3	Gochha-2	24	Kesharipatna
4	Gochha-3	25	Sorishabili-1
5	Gajalabadi-1	26	Sorishabili-2
6	Gajalabadi-2	27	Gopalpur Sasan
7	Baimela	28	V Kotibadi
8	Genja-1	29	Palakat
9	Genja-2	30	Palakat
10	Padaraisuni	31	Lathipada-1
11	Maniakati	32	Lathipada-2
12	Bhagabanapur	33	Baghuapalli
13	Bhagabanapur-2	34	Lathipada-4
14	Ramanabadi	35	Kulangi
15	Asurabandh-1	36	Kulangi
16	Asurabandh-2	37	Makarapali
17	Gobindpur	38	Kaliaguda-1
18	Dantilingi	39	Kaliaguda-2
19	Mayangi	40	Sanaborasingi
20	B.Kotibadi-1	41	Bankalidi
21	B.Kotibadi-2	42	Badaborasingi-1

Contd....

Polling Station Level Election Results

Polling Station-wise Votes Secured by Overall Top Five Parties in Surada Assembly in Assembly Election (AE) under Aska Parliamentary Constituency in Odisha (2019)

Number of Polling Station	Winner - Purna Chandra Swain (BJD)	Runner-up - Nilamani Bisoyi (BJP)	3rd - Sangram Keshari Mohanty (INC)	4th - Nirakara Nayak (IND)	5th - Raghu Nath Naik (IND)	NOTA	Other	Total Votes Secured
36	385	172	17	6	5	8	0	593
37	140	201	13	8	6	21	0	389
38	537	152	17	3	6	7	0	722
39	447	243	18	6	1	2	0	717
40	244	472	26	8	3	9	0	762
41	241	170	49	10	6	16	0	492
42	233	379	13	16	6	11	0	658
43	268	285	16	5	3	1	0	578
44	239	335	16	4	5	6	0	605
45	191	164	8	3	1	5	0	372
46	145	291	13	0	1	3	0	453
47	367	326	28	13	12	26	0	772
48	456	273	30	1	1	5	0	766
49	365	237	15	6	1	12	0	636
50	221	236	6	3	0	4	0	470
51	212	310	14	1	0	3	0	540
52	117	274	10	4	1	1	0	407
53	236	196	8	7	3	3	0	453
54	281	373	20	2	2	5	0	683
55	275	252	18	2	1	5	0	553
56	248	70	3	0	4	4	0	329
57	499	361	26	9	3	15	0	913
58	371	264	12	4	4	7	0	662
59	383	326	10	3	8	11	0	741
60	107	131	24	0	3	1	0	266
61	418	405	19	4	7	20	0	873
62	290	134	58	4	6	12	0	504
63	306	220	8	1	2	2	0	539
64	255	286	11	0	4	4	0	560
65	215	227	15	3	2	2	0	464
66	379	247	17	6	0	6	0	655
67	456	372	8	3	2	1	0	842
68	360	284	20	8	2	7	0	681
69	380	304	17	7	5	8	0	721
70	124	104	11	1	0	1	0	241

Contd....

Polling Station Level Election Results

Winner, Runner-up and 3rd Party Position & Winning Margin According to Polling Stations in Surada Assembly in Assembly Election (AE) under Aska Parliamentary Constituency in Odisha (2019)

Polling Station Number	Winner Party	Winner Votes (%)	Runner-up Party	Runner-up Votes (%)	Winning Margin Votes (%)	Third Party	Third Party Votes (%)	Other Votes (%)
71	BJD	138 (59.74)	BJP	80 (34.63)	58 (25.11)	INC	11 (4.76)	2 (0.87)
72	BJD	340 (51.91)	BJP	296 (45.19)	44 (6.72)	INC	9 (1.37)	10 (1.53)
73	BJD	280 (51.85)	BJP	233 (43.15)	47 (8.7)	INC	15 (2.78)	12 (2.22)
74	BJD	129 (49.62)	BJP	120 (46.15)	9 (3.47)	INC	10 (3.85)	1 (0.38)
75	BJD	446 (56.96)	BJP	301 (38.44)	145 (18.52)	INC	14 (1.79)	22 (2.81)
76	BJD	390 (60.09)	BJP	221 (34.05)	169 (26.04)	INC	17 (2.62)	21 (3.24)
77	BJD	393 (60.28)	BJP	221 (33.9)	172 (26.38)	INC	13 (1.99)	25 (3.83)
78	BJP	369 (52.87)	BJD	274 (39.26)	95 (13.61)	INC	20 (2.87)	35 (5.01)
79	BJD	185 (71.43)	BJP	69 (26.64)	116 (44.79)	IND (RNN)	2 (0.77)	3 (1.16)
80	BJP	361 (52.02)	BJD	307 (44.24)	54 (7.78)	INC	11 (1.59)	15 (2.16)
81	BJP	378 (57.19)	BJD	250 (37.82)	128 (19.37)	INC	18 (2.72)	15 (2.27)
82	BJD	223 (50.23)	BJP	190 (42.79)	33 (7.44)	INC	14 (3.15)	17 (3.83)
83	BJP	225 (52.45)	BJD	187 (43.59)	38 (8.86)	INC	5 (1.17)	12 (2.8)
84	BJP	395 (64.23)	BJD	163 (26.5)	232 (37.73)	INC	37 (6.02)	20 (3.25)
85	BJP	244 (47.94)	BJD	216 (42.44)	28 (5.5)	INC	29 (5.7)	20 (3.93)
86	BJP	456 (61.37)	BJD	245 (32.97)	211 (28.4)	INC	30 (4.04)	12 (1.62)
87	BJD	439 (55.36)	BJP	320 (40.35)	119 (15.01)	INC	28 (3.53)	6 (0.76)
88	BJD	304 (48.95)	BJP	231 (37.2)	73 (11.75)	INC	75 (12.08)	11 (1.77)
89	BJP	258 (48.5)	BJD	250 (46.99)	8 (1.51)	INC	15 (2.82)	9 (1.69)
90	BJP	414 (55.42)	BJD	296 (39.63)	118 (15.79)	INC	27 (3.61)	10 (1.34)
91	BJD	340 (61.15)	BJP	191 (34.35)	149 (26.8)	INC	17 (3.06)	8 (1.44)
92	BJD	430 (60.39)	BJP	242 (33.99)	188 (26.4)	INC	16 (2.25)	24 (3.37)
93	BJP	369 (49.93)	BJD	336 (45.47)	33 (4.46)	INC	22 (2.98)	12 (1.62)
94	BJD	325 (56.13)	BJP	215 (37.13)	110 (19)	INC	13 (2.25)	26 (4.49)
95	BJD	338 (62.36)	BJP	179 (33.03)	159 (29.33)	INC	15 (2.77)	10 (1.85)
96	BJD	256 (46.97)	BJP	256 (46.97)	0 (0)	INC	17 (3.12)	16 (2.94)
97	BJP	358 (50.71)	BJD	325 (46.03)	33 (4.68)	INC	14 (1.98)	9 (1.27)
98	BJD	232 (46.49)	BJP	223 (44.69)	9 (1.8)	INC	21 (4.21)	23 (4.61)
99	BJD	431 (55.19)	BJP	308 (39.44)	123 (15.75)	INC	23 (2.94)	19 (2.43)
100	BJP	202 (47.75)	BJD	196 (46.34)	6 (1.41)	INC	19 (4.49)	6 (1.42)
101	BJD	367 (47.66)	BJP	344 (44.68)	23 (2.98)	INC	24 (3.12)	35 (4.55)
102	NV	NV (NV)	NV	NV (NV)	NV (NV)	NV	NV (NV)	NV (NV)
103	BJD	413 (58.33)	BJP	259 (36.58)	154 (21.75)	INC	17 (2.4)	19 (2.68)
104	BJP	199 (51.96)	BJD	156 (40.73)	43 (11.23)	INC	15 (3.92)	13 (3.39)
105	BJD	395 (50.45)	BJP	347 (44.32)	48 (6.13)	INC	25 (3.19)	16 (2.04)

Contd....

Socio-Economic Amenities - Rural

Access to Education Facilities

Particulars	Number of Villages (% of Population)				
	Available	Not Available	If Not Available (Distance of Nearest Facility)		
			A	B	C
Govt. Primary School	233 (95)	99 (5)	74 (4)	24 (1)	1 (0)
Private Primary School	6 (5)	326 (95)	0 (0)	0 (0)	0 (0)
Govt. Middle School	111 (70)	221 (30)	93 (16)	101 (11)	20 (1)
Private Middle School	7 (6)	325 (94)	5 (1)	1 (0)	1 (1)
Govt. Secondary School	50 (36)	282 (64)	127 (37)	112 (17)	0 (0)
Private Secondary School	4 (3)	328 (97)	37 (10)	6 (1)	0 (0)
Govt. Senior Secondary School	8 (5)	324 (95)	46 (18)	43 (17)	199 (43)
Private Senior Secondary School	1 (1)	331 (99)	9 (3)	15 (7)	11 (5)
Govt. Arts and Science Degree College	2 (1)	330 (99)	17 (10)	52 (22)	162 (41)
Private Arts and Science Degree College	1 (1)	331 (99)	16 (6)	14 (5)	68 (14)
Govt. Engineering College	0 (0)	332 (100)	0 (0)	4 (0)	328 (100)
Private Engineering College	0 (0)	332 (100)	0 (0)	0 (0)	0 (0)
Govt. Medicine College	1 (1)	331 (99)	0 (0)	0 (0)	331 (99)
Private Medicine College	0 (0)	332 (100)	0 (0)	0 (0)	0 (0)
Govt. Management Institute	0 (0)	332 (100)	0 (0)	0 (0)	331 (100)
Private Management Institute	0 (0)	332 (100)	0 (0)	0 (0)	1 (0)
Govt. Polytechnic	0 (0)	332 (100)	0 (0)	0 (0)	273 (87)
Private Polytechnic	0 (0)	332 (100)	0 (0)	2 (1)	31 (6)
Govt. Vocational Training School/ITI	0 (0)	332 (100)	1 (1)	13 (6)	125 (32)
Private Vocational Training School/ITI	1 (1)	331 (99)	24 (13)	45 (20)	92 (21)
Govt. Non Formal Training Centre	0 (0)	332 (100)	1 (0)	3 (1)	98 (29)
Private Non Formal Training Centre	0 (0)	332 (100)	18 (11)	30 (13)	42 (12)
Govt. School For Disabled	0 (0)	332 (100)	1 (1)	0 (0)	241 (80)
Private School For Disabled	0 (0)	332 (100)	0 (0)	2 (0)	6 (2)
Government Others	0 (0)	332 (100)	0 (0)	0 (0)	6 (3)
Private Others	0 (0)	332 (100)	0 (0)	0 (0)	2 (0)

Note : Distance A : Less than 5 km; B : Between 5-10 km; C : 10+ km.; Source : Data Analysis is based on 2011 Census.

DISCLAIMER

The Terms of Use and Disclaimer of Datanet India Private Limited (hereinafter referred to as "Datanet") for use of this analysis report of **Surada Assembly Constituency (Surada Vidhan Sabha)** :-

1. **Assembly Factbook™** is a Registered Trade Mark owned by Datanet.
2. All the maps are sketched and graphical representation only and have not been drawn to the scale and also not to represent the actual geographical area or boundary of the unit.
3. The data for the aforesaid analysis is based on authentic sources and has been culled from the various publications of Census, CSO and NSSO for district and block level data, various central and state government departments, Central & State Elections Commissions and the concerned Returning Officers' releases, Electoral Rolls, Election results and allied publications, internal assessment, surveys, estimates and analysis. Therefore, certain adjustment of data at micro level may have been done to arrive closer to the macro data.
4. Data have been provided on an "As Is" and "As AVAILABLE" basis
5. The colours shown in the maps or diagram and charts of a particular party, alliance or AC are indicative and do not represent them.
6. This publication which includes maps, sheets, graphs and data would be the property under copyright of Datanet only. The user may use these for its internal study, analysis and research purposes. It's public display, re-selling or any commercial uses by the user are not allowed.
7. Datanet has taken due care and caution in compilation and processing of data and allied information, but does not guarantee the accuracy, adequacy or completeness of any information/analysis and will be not responsible for any errors or omissions or for the results obtained from the use of such information/analysis.
8. All the contents for the publication have been culled from various authentic sources and Datanet reasonably believes such sources to be reliable, but does not make any representations, express or implied as to the accuracy or fitness of use of such information. The information or contents of the information/analysis do not constitute advice and should not be relied upon in making (or refraining from making) any decision. Any reliance placed upon the information provided by Datanet is the sole responsibility and strictly at the user's risk.
9. In no event will Datanet be liable for any damages (including, without limitation, damages for loss of business projects, or loss of profits) arising in contract, tort or otherwise from the use of or inability to use any of its contents, or from any action taken (or refrained from being taken) as a result of using the analysis or any of its contents. Datanet its directors, owners, editors, officials, employees, distributor and agents or any associate will not be liable for any errors in the information contained or any consequences arising from the use of the contents of the provided information/analysis.
10. If any provision of these terms and conditions is held invalid or illegal or unenforceable for any reason by any court of competent jurisdiction, such provision shall be severed and the remainder of provisions of the terms and conditions shall continue in full force and effect as if the Term of Use had been executed with the invalid, illegal or unenforceable provision eliminated.
11. If there are any discrepancies in the information provided, please bring it to attention of Datanet for suitable rectification measures.

Buy Online This Complete Book At
Datanet India eBooks Store

www.indiastatpublications.com

or go directly at

[http://www.indiastatpublications.com/
Assembly_factbook/Odisha/Aska/ Surada](http://www.indiastatpublications.com/Assembly_factbook/Odisha/Aska/Surada)

 **indiaSTAT**elections

ISBN : 978-93-5301-917-4



9 789353 019174