



Odisha

Assembly Factbook™

Attabira Assembly Constituency



Key Electoral Data of Attabira
Assembly Constituency (Vidhan Sabha)

Odisha

Assembly Factbook™

Attabira Assembly Constituency



Attabira Vidhan Sabha

Editor & Director

Dr. R.K. Thukral

Research Editor

Dr. Shafeeq Rahman

Compiled, Researched and Published by Datanet India Pvt. Ltd.

D-100, 1st Floor,

Okhla Industrial Area, Phase-I,
New Delhi- 110020.

Ph.: 91-11- 43580781-84

Email : support@indiastatpublications.com

Website : www.indiastatelections.com

Online Book Store :

www.indiastatpublications.com

Report No. : AFB/OD-004-0123

ISBN : 978-93-5301-870-2

First Edition : January, 2018

Sixth Updated Edition : January, 2023

Price : Rs. 11500/-

US\$ 310

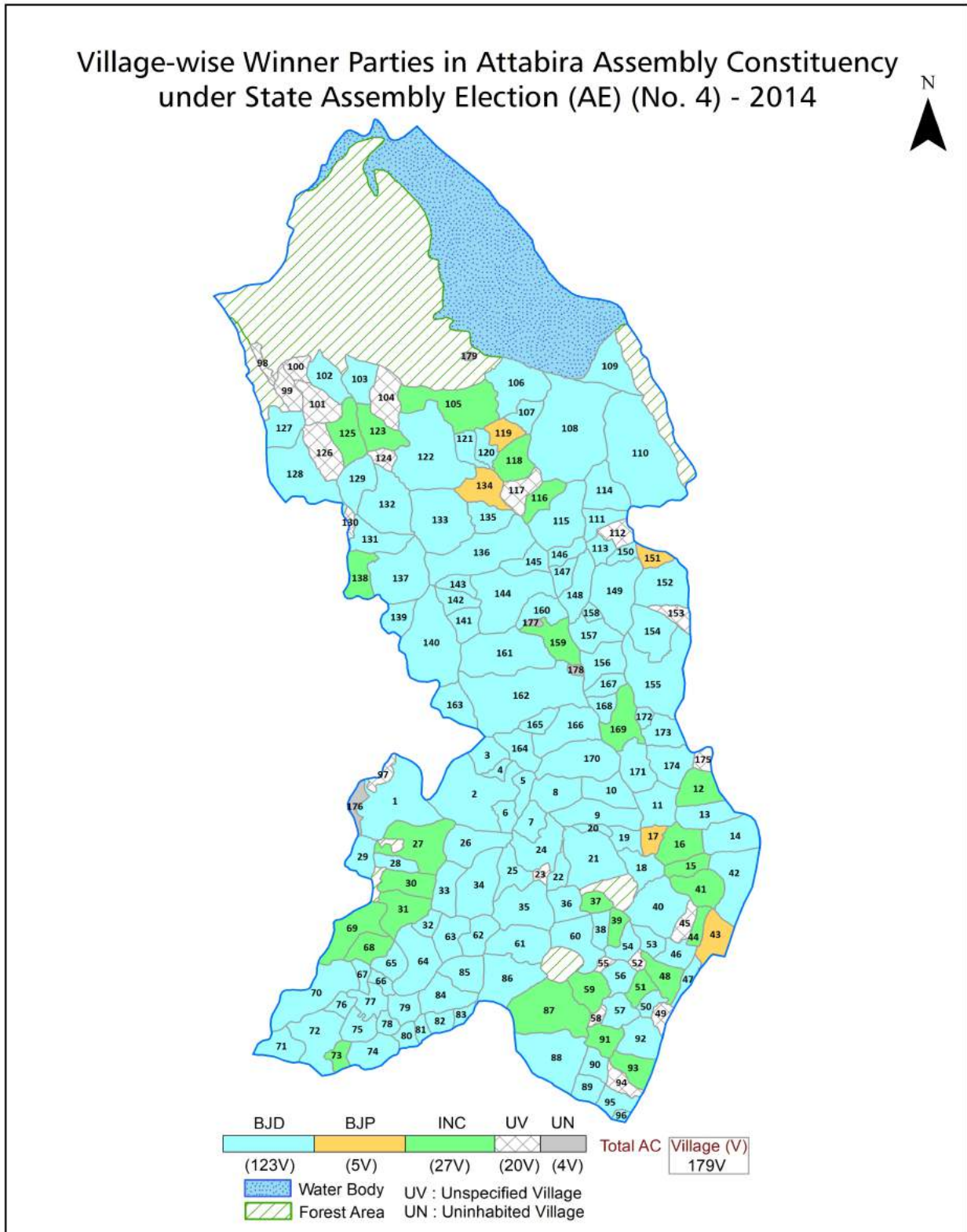
© Datanet India Pvt. Ltd.

All rights reserved. No part of this book may be reproduced, stored in a retrieval system or transmitted in any form or by any means, mechanical photocopying, photographing, scanning, recording or otherwise without the prior written permission of the publisher. Please refer to Disclaimer at page no. 219 for the use of this publication.

Printed in India

No.	Particulars	Page No.
	Introduction	
1	Assembly Constituency - (Vidhan Sabha) at a Glance Features of Assembly as per Delimitation Commission of India (2008)	1-2
	Location and Political Maps	
2	Location Map Boundaries of Assembly Constituency - (Vidhan Sabha) in District Boundaries of Assembly Constituency under Parliamentary Constituency - (Lok Sabha) Village-wise Winner Parties- 2019-PE, 2019-AE, 2014-PE, 2014-AE, 2009-PE and 2009-AE	3-11
	Administrative Setup (2011)	
3	District Sub-district Towns Villages Inhabited Villages Uninhabited Villages Village Panchayat Intermediate Panchayat	12-22
	Demographics (2011)	
4	Population Households Rural/Urban Population Villages by Population Size Sex Ratio (Total & 0-6 Years) Religious Population Social Population Literacy Rate	23-24
	Electoral Features	
5	Important Dates of Last Elections Held Electors by Gender Service Electors Voters Voters Turnout Polling Stations & Average Number of Electors per Polling Station Electors by Age Group Present Elected Representatives	25-30
	Historical Summary Election Results	
6	Vote Share of Major Parties Winning Margin (Number & Percentage) Polarity of Parties Summary Result of Assembly Segment of Parliamentary Elections 2019, 2014 and 2009 Summary Result of Assembly Elections 2019, 2014 and 2009	31-40
	Polling Station Level Election Results	
7	Name and Number of Polling Station 2019-PE, 2019-AE, 2014-PE, 2014-AE, 2009-PE and 2009-AE Polling Station-wise Electors, Voters & Voters Turnout 2019-PE, 2019-AE, 2014-PE, 2014-AE, 2009-PE and 2009-AE Polling Station wise Elections Results 2019-PE, 2019-AE, 2014-PE, 2014-AE, 2009-PE and 2009-AE	41-198
	Share of Assembly Constituency	
8	Share of Assembly Constituency - (Vidhan Sabha) in State, District and Parliamentary Constituency - (Lok Sabha)	199
	Socio-Economic Amenities (2011)	
9	Access to Administrative Units Agricultural, Manufacturing and Industrial Commodities Demographic Indicators Education Health & Manpower Drinking Water Supply Sanitation Entertainment and Recreations Infrastructure Power Food Allocation Distribution and Marketing of Agriculture Commodities Infrastructure Transport and Road Infrastructure Communication Banking and Financial Services Land Use Irrigation Source	201-215
10	Abbreviation & Sources	216-217
11	Disclaimer	219

Location & Political Map



Administrative Setup

List of Village Panchayat & Intermediate Panchayat (Block) Name - 2011

Village Name	Village Panchayat Name	Intermediate Panchayat Name
Achhandpali	Luhakhandi	Bheden
Ainlapali	Ainlapali	Bheden
Amastala	Larambha	Attabira
Amjhar	Tangarpali	Attabira
Amlipali	Bheden	Bheden
Amlipali	Amlipali	Attabira
Apamara	Bakti	Bheden
Areigudi	Areigudi	Bheden
Arjunda	Arjunda	Bheden
Attabira	Attabira	Attabira
Babebira	Kulunda	Attabira
Bad Piplipali	Papanga	Bheden
Baipur	Manpur	Bheden
Bakti	Bakti	Bheden
Balikulunda	Dalab	Bheden
Banahar	Tope	Attabira
Banipali	Dalab	Bheden
Banjipali	Chichinda	Bheden
Bargad	Lachida	Attabira
Bargaon	Ainlapali	Bheden
Barpadar	Luhakhandi	Bheden
Baseikela	Areigudi	Bheden
Bhalupali	Sialkhandhata	Bheden
Bhankud	Mahulpali	Bheden
Bheden	Bheden	Bheden
Bhoipali	Remenda	Bheden
Bhoipali	Larasara	Attabira
Bhoipura	Attabira	Attabira
Bhoitikira	Godbhaga	Attabira

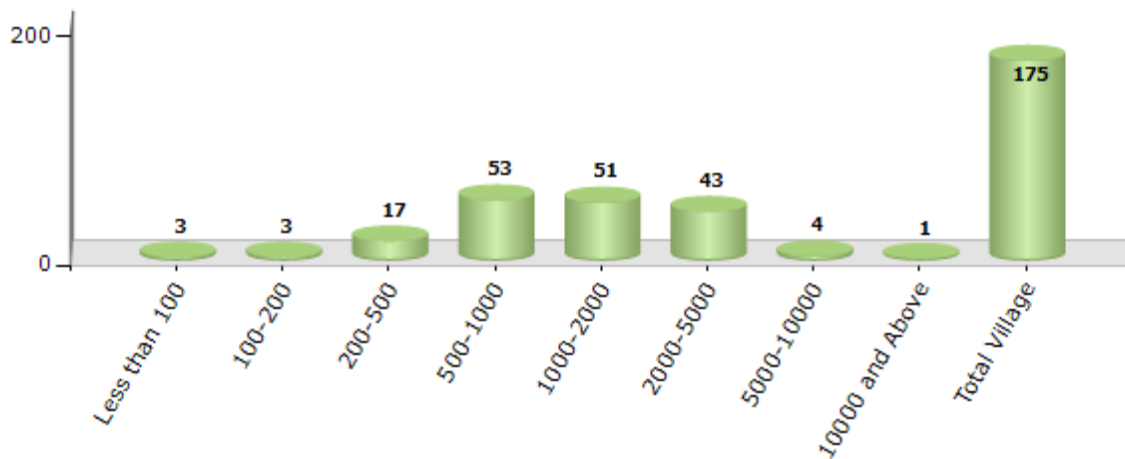
Contd....

Demographic

Number of Villages by Population Size - 2011

Less than 100	100-200	200-500	500-1000	1000-2000	2000-5000	5000-10000	10000 and Above	Total Village
3	3	17	53	51	43	4	1	175

Number of Villages by Population Size - 2011

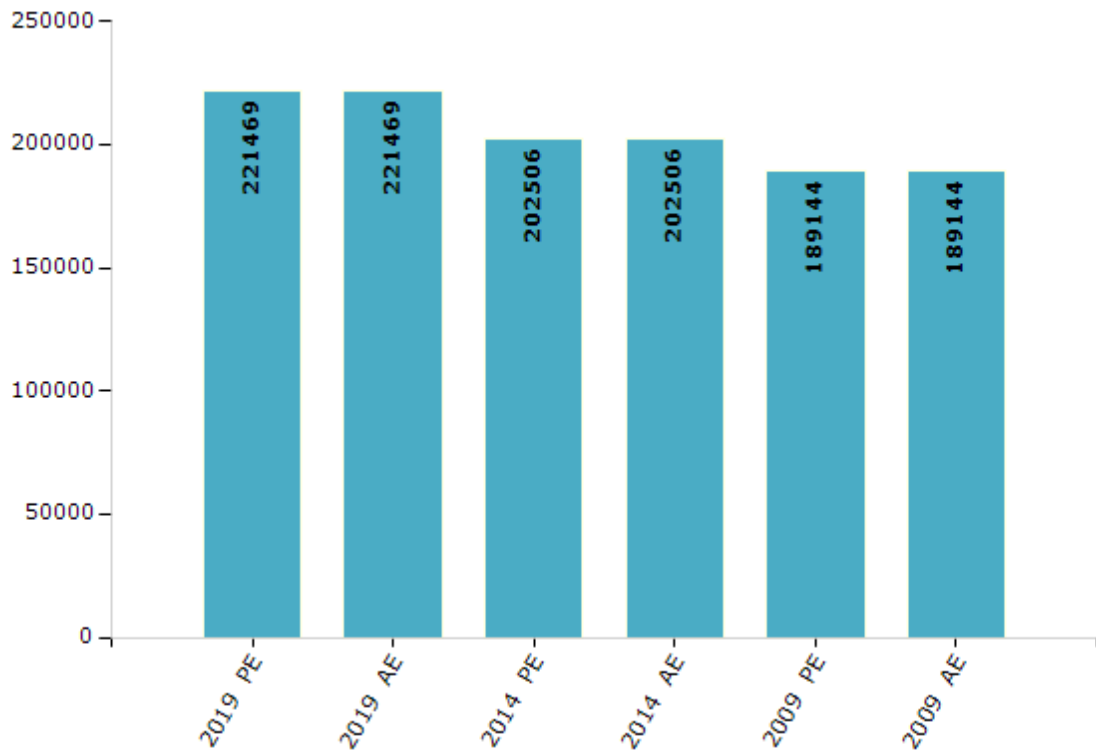


Electoral Features

Electors by Male & Female

Year	Male	Female	Others	Total	Year	Male	Female	Others	Total
2019 PE	114331	107135	3	221469	1990 AE	-	-	-	-
2019 AE	114331	107135	3	221469	1985 AE	-	-	-	-
2014 PE	107772	94732	2	202506	1980 AE	-	-	-	-
2014 AE	107772	94732	2	202506	1977 AE	-	-	-	-
2009 PE	100853	88291	-	189144	1974 AE	-	-	-	-
2009 AE	100853	88291	-	189144	1971 AE	-	-	-	-
2004 PE	-	-	-	-	1967 AE	-	-	-	-
2004 AE	-	-	-	-	1961 AE	-	-	-	-
2000 AE	-	-	-	-	1957 AE	-	-	-	-
1999 PE	-	-	-	-	1952 AE	-	-	-	-
1995 AE	-	-	-	-					

Number of Electors



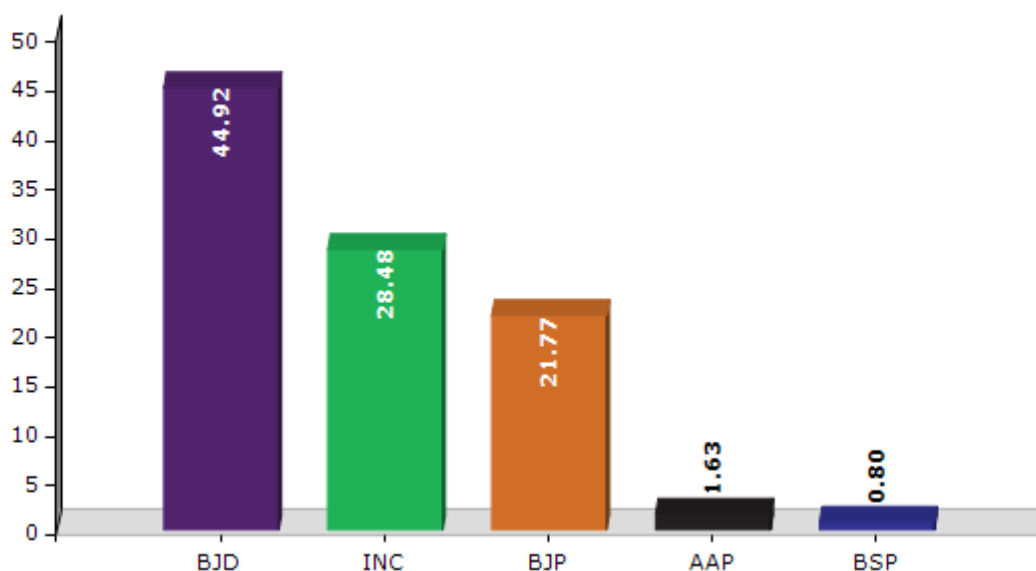
Note : AE : Assembly Election, PE : Assembly Segment of Parliamentary Election

Historical Summary Election Results

Summary Result of Assembly Election - 2014

Candidate Name	Party	Votes	Votes %
Snehangini Chhuria	BJD	69602	44.92
Nihar Ranjan Mahananda	INC	44128	28.48
Milan Seth	BJP	33735	21.77
Upendra Seth	AAP	2521	1.63
Madhabi Dehuria	BSP	1233	0.8
Arjun Nag	LGGP	790	0.51
Kumar Behera	AITC	757	0.49
Chandramani Kumbhar	PCHVP	668	0.43
	NOTA	1509	0.97

Votes Percentage of Top Parties - 2014



Polling Station Level Election Results

Number and Name of Polling Stations (PS) (2019 AE)

Number of Polling Stations	Name of Polling Stations	Number of Polling Stations	Name of Polling Stations
1	Chuladhar	22	Lahanda - 2
2	Chuladhar-1	23	Lahanda - 3
3	Junani	24	Lahanda - 3
4	Amjhar	25	Jugipali
5	Kantala	26	Kendupali
6	Tangarpali	27	Godabhaga -1
7	Amalipali	28	Godabhaga -2
8	Amlipali	29	Godabhaga -3
9	Pahadashrigida	30	Larasara -1
10	Pahadashrigida	31	Larasara -2
11	Pahadashrigida	32	Larasara-Ii Khairpali
12	Pahadashrigida	33	Bhoipali
13	Rengali	34	Tupapada
14	Rengali	35	Janged -1
15	Dhemsra	36	Janged -2
16	Silat -1	37	Sodhapali
17	Silet	38	Haldi
18	Silat -2	39	Kuketira
19	Putputpali	40	Banhar
20	Lahanda	41	Singhpali
21	Lahanda - 1	42	Singhpali

Contd....

Polling Station Level Election Results

Polling Station-wise Votes Secured by Overall Top Five Parties in Attabira Assembly in Assembly Election (AE) under Bargarh Parliamentary Constituency in Odisha (2019)

Number of Polling Station	Winner - Snehangini Chhuria (BJD)	Runner-up - Milan Seth (BJP)	3rd - Nihar Ranjan Mahanand (INC)	4th - Rabindra Megha (BSP)	5th - Laxman Kumar Bhoi (PCHVP)	NOTA	Other	Total Votes Secured
36	335	249	274	10	1	1	0	870
37	355	418	58	5	3	5	0	844
38	153	237	58	6	3	0	0	457
39	559	298	19	11	4	0	0	891
40	400	450	44	12	8	10	0	924
41	443	293	76	5	5	11	0	833
42	332	216	65	8	6	5	0	632
43	316	295	33	5	2	11	0	662
44	481	269	21	2	5	9	0	787
45	385	284	28	13	15	10	0	735
46	257	233	271	12	2	21	0	796
47	484	276	136	14	8	18	0	936
48	322	234	246	17	10	8	0	837
49	198	252	128	5	1	7	0	591
50	417	302	38	4	3	6	0	770
51	229	312	36	3	0	5	0	585
52	343	297	34	4	12	9	0	699
53	232	121	55	5	5	7	0	425
54	310	337	167	7	5	15	0	841
55	265	190	72	0	4	7	0	538
56	275	369	51	10	4	9	0	718
57	310	250	36	9	5	9	0	619
58	380	252	101	19	3	7	0	762
59	445	239	87	7	2	6	0	786
60	447	267	110	6	6	7	0	843
61	402	193	129	3	6	7	0	740
62	178	98	27	0	2	3	0	308
63	327	259	38	6	1	9	0	640
64	406	301	118	11	9	5	0	850
65	415	342	93	10	4	5	0	869
66	505	368	72	10	6	10	0	971
67	420	267	113	9	10	15	0	834
68	186	263	108	3	4	6	0	570
69	276	230	132	2	3	5	0	648
70	383	236	83	4	7	14	0	727

Contd....

Polling Station Level Election Results

Winner, Runner-up and 3rd Party Position & Winning Margin According to Polling Stations in Attabira Assembly in Assembly Election (AE) under Bargarh Parliamentary Constituency in Odisha (2019)

Polling Station Number	Winner Party	Winner Votes (%)	Runner-up Party	Runner-up Votes (%)	Winning Margin Votes (%)	Third Party	Third Party Votes (%)	Other Votes (%)
71	BJP	318 (44.41)	BJD	284 (39.66)	34 (4.75)	INC	99 (13.83)	15 (2.09)
72	BJP	274 (44.05)	BJD	195 (31.35)	79 (12.7)	INC	138 (22.19)	15 (2.41)
73	BJP	516 (58.84)	BJD	243 (27.71)	273 (31.13)	INC	103 (11.74)	15 (1.71)
74	BJP	303 (41.85)	BJD	276 (38.12)	27 (3.73)	INC	130 (17.96)	15 (2.07)
75	BJP	449 (45.04)	BJD	381 (38.21)	68 (6.83)	INC	147 (14.74)	20 (2.01)
76	BJP	390 (44.32)	BJD	327 (37.16)	63 (7.16)	INC	144 (16.36)	19 (2.16)
77	BJP	351 (52.78)	BJD	279 (41.95)	72 (10.83)	INC	20 (3.01)	15 (2.26)
78	BJP	373 (57.92)	BJD	226 (35.09)	147 (22.83)	INC	32 (4.97)	13 (2.02)
79	BJD	346 (46.51)	BJP	333 (44.76)	13 (1.75)	INC	52 (6.99)	13 (1.75)
80	BJD	349 (48.68)	BJP	284 (39.61)	65 (9.07)	INC	64 (8.93)	20 (2.79)
81	INC	387 (45.42)	BJP	275 (32.28)	112 (13.14)	BJD	176 (20.66)	14 (1.64)
82	INC	172 (42.57)	BJD	149 (36.88)	23 (5.69)	BJP	73 (18.07)	10 (2.48)
83	BJD	495 (56.12)	BJP	360 (40.82)	135 (15.3)	INC	17 (1.93)	10 (1.13)
84	BJD	446 (51.86)	BJP	353 (41.05)	93 (10.81)	INC	37 (4.3)	24 (2.79)
85	BJP	405 (45.92)	BJD	286 (32.43)	119 (13.49)	INC	152 (17.23)	39 (4.42)
86	BJP	425 (49.94)	BJD	259 (30.43)	166 (19.51)	INC	138 (16.22)	29 (3.41)
87	BJD	342 (45.12)	BJP	316 (41.69)	26 (3.43)	INC	83 (10.95)	17 (2.24)
88	BJD	229 (44.47)	BJP	212 (41.17)	17 (3.3)	INC	64 (12.43)	10 (1.94)
89	BJP	365 (51.99)	BJD	227 (32.34)	138 (19.65)	INC	86 (12.25)	24 (3.42)
90	BJD	251 (59.48)	BJP	143 (33.89)	108 (25.59)	INC	16 (3.79)	12 (2.84)
91	BJP	460 (49.95)	BJD	390 (42.35)	70 (7.6)	INC	49 (5.32)	22 (2.39)
92	BJP	317 (48.25)	BJD	275 (41.86)	42 (6.39)	INC	49 (7.46)	16 (2.44)
93	BJP	495 (54.58)	BJD	351 (38.7)	144 (15.88)	INC	39 (4.3)	22 (2.43)
94	BJP	456 (50.84)	BJD	364 (40.58)	92 (10.26)	INC	63 (7.02)	14 (1.56)
95	BJD	304 (44.84)	BJP	271 (39.97)	33 (4.87)	INC	77 (11.36)	26 (3.83)
96	BJP	296 (40.6)	BJD	251 (34.43)	45 (6.17)	INC	157 (21.54)	25 (3.43)
97	BJD	255 (49.71)	BJP	174 (33.92)	81 (15.79)	INC	61 (11.89)	23 (4.48)
98	BJD	355 (46.53)	BJP	330 (43.25)	25 (3.28)	INC	57 (7.47)	21 (2.75)
99	BJD	272 (48.92)	BJP	242 (43.53)	30 (5.39)	INC	28 (5.04)	14 (2.52)
100	BJD	443 (49.39)	BJP	378 (42.14)	65 (7.25)	INC	49 (5.46)	27 (3.01)
101	BJP	296 (50.6)	BJD	236 (40.34)	60 (10.26)	INC	44 (7.52)	9 (1.54)
102	BJD	264 (65.67)	BJP	122 (30.35)	142 (35.32)	INC	11 (2.74)	5 (1.24)
103	BJP	352 (48.96)	BJD	302 (42)	50 (6.96)	INC	51 (7.09)	14 (1.95)
104	BJD	402 (66.56)	BJP	128 (21.19)	274 (45.37)	INC	60 (9.93)	14 (2.32)
105	BJD	371 (50.34)	BJP	309 (41.93)	62 (8.41)	INC	41 (5.56)	16 (2.17)

Contd....

Socio-Economic Amenities - Rural

Access to Education Facilities

Particulars	Number of Villages (% of Population)				
	Available	Not Available	If Not Available (Distance of Nearest Facility)		
			A	B	C
Govt. Primary School	175 (100)	0 (0)	0 (0)	0 (0)	0 (0)
Private Primary School	7 (8)	168 (92)	0 (0)	0 (0)	0 (0)
Govt. Middle School	127 (88)	48 (12)	47 (12)	1 (0)	0 (0)
Private Middle School	11 (19)	164 (81)	0 (0)	0 (0)	0 (0)
Govt. Secondary School	27 (17)	148 (83)	86 (44)	31 (16)	0 (0)
Private Secondary School	5 (6)	170 (94)	18 (11)	9 (6)	0 (0)
Govt. Senior Secondary School	61 (58)	114 (42)	2 (0)	12 (6)	12 (5)
Private Senior Secondary School	6 (13)	169 (87)	9 (6)	9 (3)	70 (22)
Govt. Arts and Science Degree College	14 (15)	161 (85)	9 (5)	16 (9)	7 (4)
Private Arts and Science Degree College	0 (0)	175 (100)	7 (9)	34 (21)	88 (38)
Govt. Engineering College	0 (0)	175 (100)	0 (0)	0 (0)	0 (0)
Private Engineering College	0 (0)	175 (100)	1 (0)	3 (2)	171 (97)
Govt. Medicine College	0 (0)	175 (100)	0 (0)	0 (0)	175 (100)
Private Medicine College	0 (0)	175 (100)	0 (0)	0 (0)	0 (0)
Govt. Management Institute	0 (0)	175 (100)	0 (0)	0 (0)	5 (6)
Private Management Institute	0 (0)	175 (100)	0 (0)	6 (3)	164 (90)
Govt. Polytechnic	0 (0)	175 (100)	0 (0)	0 (0)	36 (28)
Private Polytechnic	0 (0)	175 (100)	0 (0)	0 (0)	11 (6)
Govt. Vocational Training School/ITI	0 (0)	175 (100)	0 (0)	0 (0)	18 (13)
Private Vocational Training School/ITI	0 (0)	175 (100)	4 (3)	4 (2)	28 (20)
Govt. Non Formal Training Centre	0 (0)	175 (100)	0 (0)	0 (0)	16 (10)
Private Non Formal Training Centre	0 (0)	175 (100)	0 (0)	0 (0)	31 (24)
Govt. School For Disabled	0 (0)	175 (100)	0 (0)	0 (0)	8 (4)
Private School For Disabled	0 (0)	175 (100)	0 (0)	0 (0)	44 (32)
Government Others	3 (2)	172 (98)	0 (0)	0 (0)	0 (0)
Private Others	1 (0)	174 (100)	0 (0)	0 (0)	0 (0)

Note : Distance A : Less than 5 km; B : Between 5-10 km; C : 10+ km.; Source : Data Analysis is based on 2011 Census.

DISCLAIMER

The Terms of Use and Disclaimer of Datanet India Private Limited (hereinafter referred to as "Datanet") for use of this analysis report of **Attabira Assembly Constituency (Attabira Vidhan Sabha) :-**

1. **Assembly Factbook™** is a Registered Trade Mark owned by Datanet.
2. All the maps are sketched and graphical representation only and have not been drawn to the scale and also not to represent the actual geographical area or boundary of the unit.
3. The data for the aforesaid analysis is based on authentic sources and has been culled from the various publications of Census, CSO and NSSO for district and block level data, various central and state government departments, Central & State Elections Commissions and the concerned Returning Officers' releases, Electoral Rolls, Election results and allied publications, internal assessment, surveys, estimates and analysis. Therefore, certain adjustment of data at micro level may have been done to arrive closer to the macro data.
4. Data have been provided on an "As Is" and "As AVAILABLE" basis
5. The colours shown in the maps or diagram and charts of a particular party, alliance or AC are indicative and do not represent them.
6. This publication which includes maps, sheets, graphs and data would be the property under copyright of Datanet only. The user may use these for its internal study, analysis and research purposes. It's public display, re-selling or any commercial uses by the user are not allowed.
7. Datanet has taken due care and caution in compilation and processing of data and allied information, but does not guarantee the accuracy, adequacy or completeness of any information/analysis and will be not responsible for any errors or omissions or for the results obtained from the use of such information/analysis.
8. All the contents for the publication have been culled from various authentic sources and Datanet reasonably believes such sources to be reliable, but does not make any representations, express or implied as to the accuracy or fitness of use of such information. The information or contents of the information/analysis do not constitute advice and should not be relied upon in making (or refraining from making) any decision. Any reliance placed upon the information provided by Datanet is the sole responsibility and strictly at the user's risk.
9. In no event will Datanet be liable for any damages (including, without limitation, damages for loss of business projects, or loss of profits) arising in contract, tort or otherwise from the use of or inability to use any of its contents, or from any action taken (or refrained from being taken) as a result of using the analysis or any of its contents. Datanet its directors, owners, editors, officials, employees, distributor and agents or any associate will not be liable for any errors in the information contained or any consequences arising from the use of the contents of the provided information/analysis.
10. If any provision of these terms and conditions is held invalid or illegal or unenforceable for any reason by any court of competent jurisdiction, such provision shall be severed and the remainder of provisions of the terms and conditions shall continue in full force and effect as if the Term of Use had been executed with the invalid, illegal or unenforceable provision eliminated.
11. If there are any discrepancies in the information provided, please bring it to attention of Datanet for suitable rectification measures.

**Buy Online This Complete Book At
Datanet India eBooks Store**

www.indiastatpublications.com

or go directly at

[http://www.indiastatpublications.com/
Assembly_factbook/Odisha/Bargarh/ Attabira](http://www.indiastatpublications.com/Assembly_factbook/Odisha/Bargarh/Attabira)

 **india**stat**elections**

ISBN : 978-93-5301-870-2



9 789353 018702