



Odisha

Assembly Factbook™

Chhatrapur Assembly Constituency



Key Electoral Data of Chhatrapur
Assembly Constituency (Vidhan Sabha)

Odisha

Assembly Factbook™

Chhatrapur Assembly Constituency



Chhatrapur Vidhan Sabha

Editor & Director

Dr. R.K. Thukral

Research Editor

Dr. Shafeeq Rahman

Compiled, Researched and Published by Datanet India Pvt. Ltd.

D-100, 1st Floor,

Okhla Industrial Area, Phase-I,
New Delhi- 110020.

Ph.: 91-11- 43580781-84

Email : support@indiastatpublications.com

Website : www.indiastatelections.com

Online Book Store :

www.indiastatpublications.com

Report No. : AFB/OD-127-0125

ISBN : 978-93-5301-890-0

First Edition : January, 2018

Eighth Updated Edition : January, 2025

Price : Rs. 11500/-

US\$ 310

© Datanet India Pvt. Ltd.

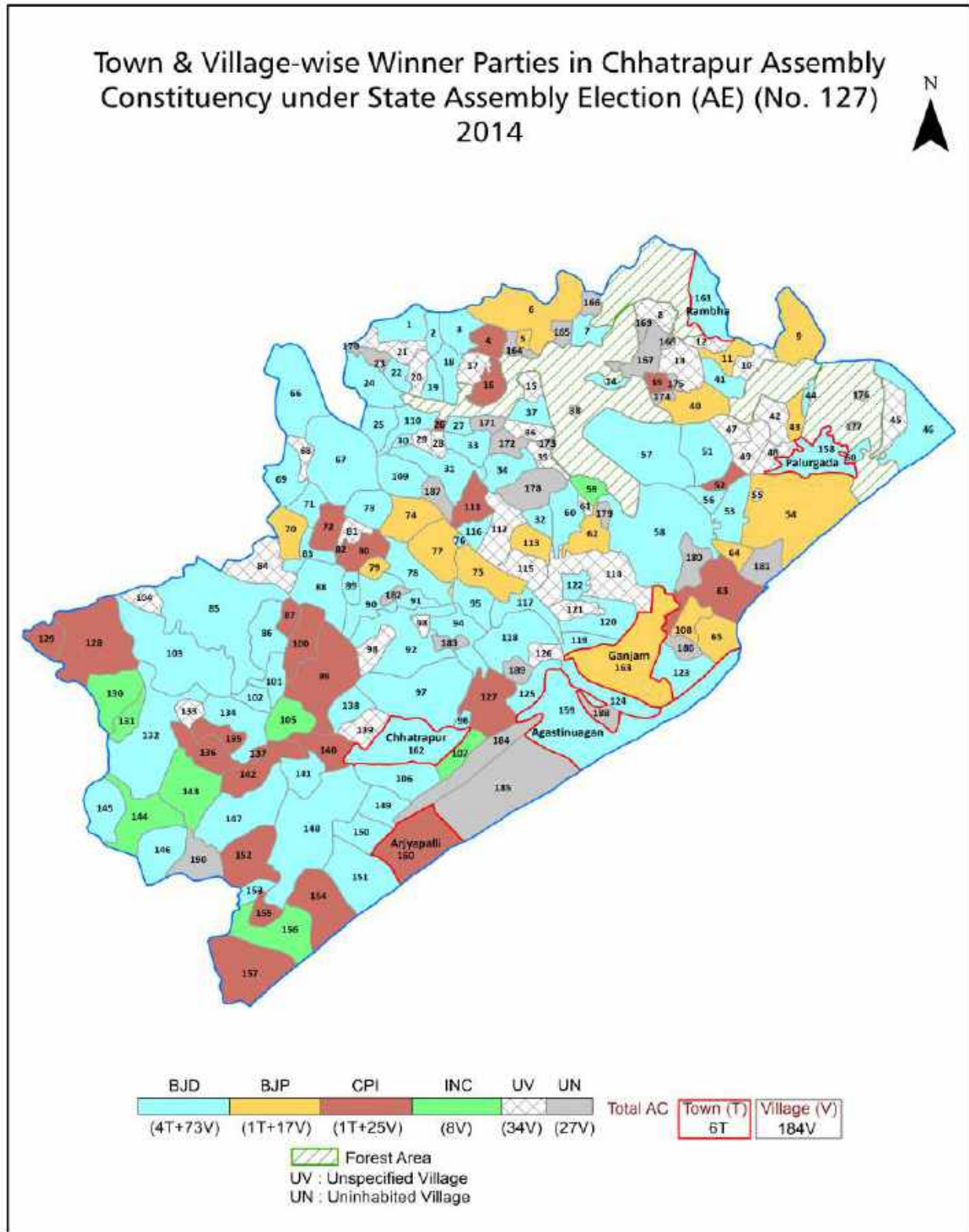
All rights reserved. No part of this book may be reproduced, stored in a retrieval system or transmitted in any form or by any means, mechanical photocopying, photographing, scanning, recording or otherwise without the prior written permission of the publisher. Please refer to Disclaimer at page no. 218 for the use of this publication.

Printed in India

Contents

No.	Particulars	Page No.
	Introduction	
1	Assembly Constituency - (Vidhan Sabha) at a Glance Features of Assembly as per Delimitation Commission of India (2008)	1-2
	Location and Political Maps	
2	Location Map Boundaries of Assembly Constituency - (Vidhan Sabha in District Boundaries of Assembly Constituency under Parliamentary Constituency - (Lok Sabha) Town & Village-wise Winner Parties- 2024-PE, 2024-AE, 2019-PE, 2019-AE, 2014-PE, 2014-AE, 2009-PE and 2009-AE	3-11
	Administrative Setup (2011)	
3	District Sub-district Towns Villages Inhabited Villages Uninhabited Villages Village Panchayat Intermediate Panchayat	12-20
	Demographics (2011)	
4	Population Households Rural/Urban Population Towns and Villages by Population Size Sex Ratio (Total & 0-6 Years) Religious Population Social Population Literacy Rate	21-22
	Electoral Features	
5	Important Dates of Last Elections Held Electors by Gender Service Electors Voters Voters Turnout Polling Stations & Average Number of Electors per Polling Station Electors by Age Group Present Elected Representatives	23-28
	Historical Summary Election Results	
6	Vote Share of Major Parties Winning Margin (Number & Percentage Polarity of Parties Summary Result of Assembly Segment of Parliamentary Elections 2024, 2019, 2014, 2009, 2004 and 1999 Summary Result of Assembly Elections 2024, 2019, 2014, 2009, 2004, 2000, 1995, 1990, 1985, 1980, 1977, 1974, 1971, 1967, 1961, 1957 and 1952	29-53
	Polling Station Level Election Results	
7	Name and Number of Polling Station 2024-PE, 2024-AE, 2019-PE, 2019-AE, 2014-PE, 2014-AE, 2009-PE and 2009-AE Polling Station-wise Electors, Voters & Voters Turnout 2024-PE, 2024-AE, 2019-PE, 2019-AE, 2014-PE, 2014-AE, 2009-PE and 2009-AE Polling Station wise Elections Results 2024-PE, 2024-AE, 2019-PE, 2019-AE, 2014-PE, 2014-AE, 2009-PE and 2009-AE	54-197
	Share of Assembly Constituency	
8	Share of Assembly Constituency - (Vidhan Sabha) in State, District and Parliamentary Constituency - (Lok Sabha)	198
	Socio-Economic Amenities (2011)	
9	Access to Administrative Units Agricultural, Manufacturing and Industrial Commodities Demographic Indicators Education Health & Manpower Drinking Water Supply Sanitation Entertainment and Recreations Infrastructure Power Food Allocation Distribution and Marketing of Agriculture Commodities Infrastructure Transport and Road Infrastructure Communication Banking and Financial Services Land Use Irrigation Source	200-214
10	Abbreviation & Sources	215-216
11	Disclaimer	218

Location & Political Map



Administrative Setup

List of Village Panchayat & Intermediate Panchayat (Block) Name - 2011

Village Name	Village Panchayat Name	Intermediate Panchayat Name
Aliabada	Karapada	Ganjam
Badachokada	Poirasi	Ganjam
Badamadhapur	Badamadhapur	Chhatrapur
Badaputi	Kalipalli	Chhatrapur
Badaramachandrapur	Poirasi	Ganjam
Bagalpur	Khanda Deuli	Ganjam
Bahadapalli	Subalaya	Ganjam
Bahalapur	Malada	Ganjam
Bahulagam	Baulgam	Chhatrapur
Balakrishnapur	Chikalakhandi	Chhatrapur
Balarampur	Khanda Deuli	Ganjam
Balasinghapalli	Unri dharmasaranpur	Ganjam
Balibagada	Subalaya	Ganjam
Balinkisaranpur	Santoshpur	Ganjam
Ballibagada	Chikalakhandi	Chhatrapur
Banabulapalli	Chamakhandi	Chhatrapur
Bandhatalanuagam	Ramagada (Paluru)	Ganjam
Barada	Malada	Ganjam
Baranga	Badamadhapur	Chhatrapur
Barapalli	Poirasi	Ganjam
Basanaputi	Kalipalli	Chhatrapur
Belapada	Subalaya	Ganjam
Benigohiri	Unri dharmasaranpur	Ganjam
Bhagirathipur	Baulgam	Chhatrapur
Bhaigadhia	Sanaramchandrapur	Ganjam
Bhikaripalli	Bhikaripalli	Chhatrapur
Bhramarakudi	Ramagada (Paluru)	Ganjam
Bhuanbhuin	Poirasi	Ganjam
Binchanapalli	Ramagada (Paluru)	Ganjam

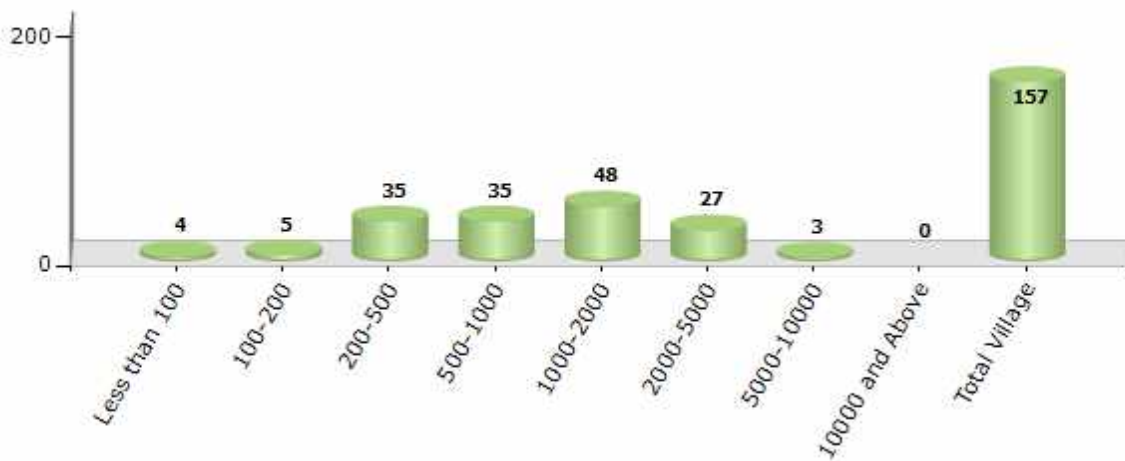
Contd....

Demographic

Number of Villages by Population Size - 2011

Less than 100	100-200	200-500	500-1000	1000-2000	2000-5000	5000-10000	10000 and Above	Total Village
4	5	35	35	48	27	3	0	157

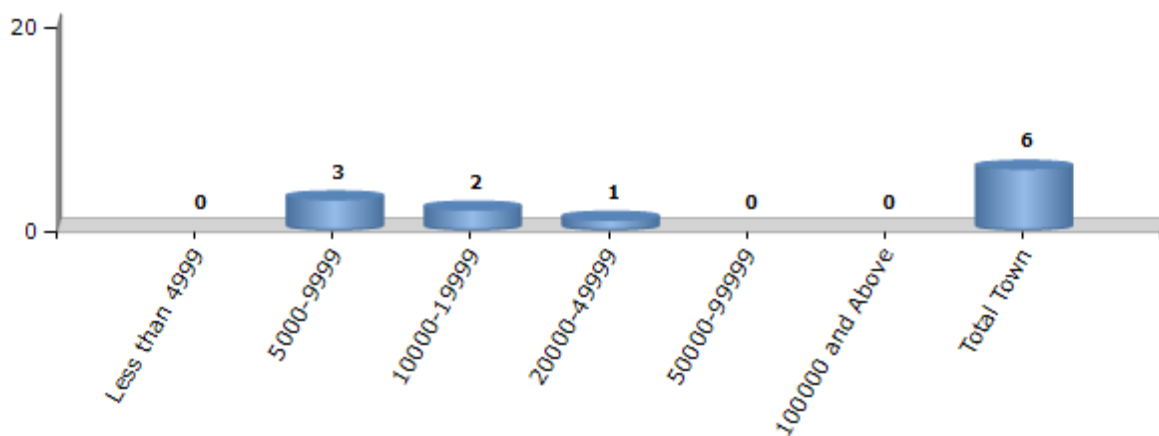
Number of Villages by Population Size - 2011



Number of Towns by Population Size - 2011

Less than 4999	5000-9999	10000-19999	20000-49999	50000-99999	100000 and Above	Total Town
0	3	2	1	0	0	6

Number of Towns by Population Size - 2011



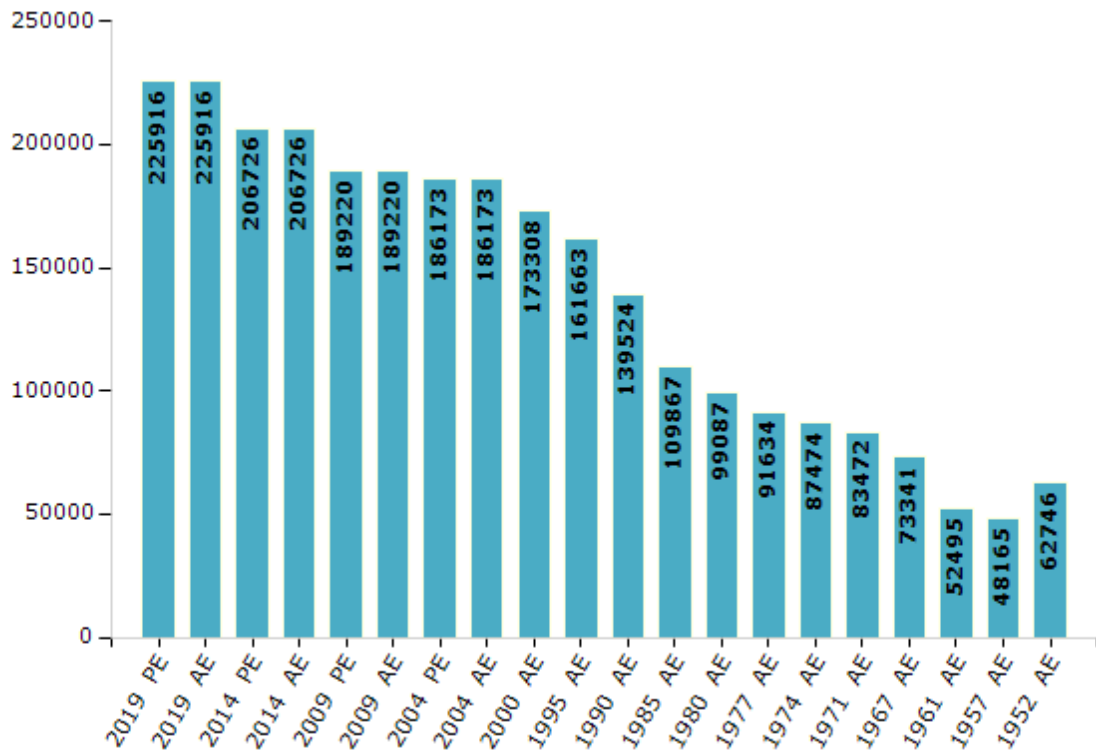
Electoral Features

Electors by Male & Female

Year	Male	Female	Others	Total
2019 PE	116437	109470	9	225916
2019 AE	116437	109470	9	225916
2014 PE	107464	99260	2	206726
2014 AE	107464	99260	2	206726
2009 PE	97590	91630	-	189220
2009 AE	97590	91630	-	189220
2004 PE	95042	91131	-	186173
2004 AE	95042	91131	-	186173
2000 AE	88893	84415	-	173308
1999 PE	-	-	-	-
1995 AE	85181	76482	-	161663

Year	Male	Female	Others	Total
1990 AE	78835	60689	-	139524
1985 AE	56108	53759	-	109867
1980 AE	51282	47805	-	99087
1977 AE	48034	43600	-	91634
1974 AE	43569	43905	-	87474
1971 AE	44089	39383	-	83472
1967 AE	73341	0	-	73341
1961 AE	52495	0	-	52495
1957 AE	48165	0	-	48165
1952 AE	-	-	-	62746

Number of Electors



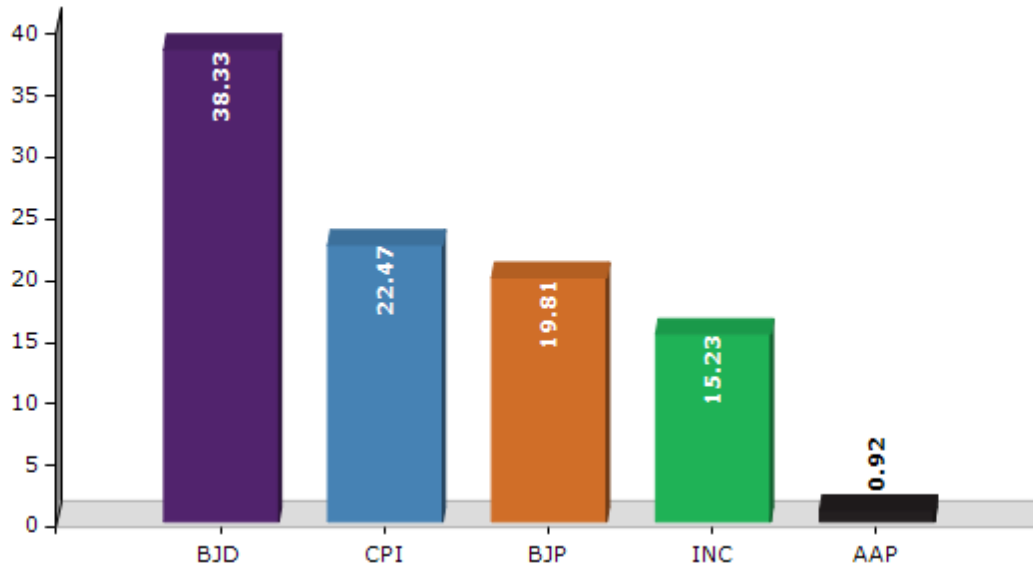
Note : AE : Assembly Election, PE : Assembly Segment of Parliamentary Election

Historical Summary Election Results

Summary Result of Assembly Election - 2014

Candidate Name	Party	Votes	Votes %
Priyanshu Pradhan	BJD	53221	38.33
Krushna Chandra Nayak	CPI	31202	22.47
Dharanidhar Behera	BJP	27511	19.81
Banamali Sethi	INC	21151	15.23
Ritu Kumari Sethi	AAP	1271	0.92
Pramod Kumar	IND	1177	0.85
Natabara Behera	AITC	1111	0.8
	NOTA	2211	1.59

Votes Percentage of Top Parties - 2014



Polling Station Level Election Results

Number and Name of Polling Stations (PS) (2019 AE)

Number of Polling Stations	Name of Polling Stations	Number of Polling Stations	Name of Polling Stations
1	Ramapalli	22	Sikharapalli
2	KERANDITOLANARAYANPUR-I	23	Balarampur
3	KERANDITOLANARAYANPUR-II	24	Putabagada
4	TANGANAPALLI-I	25	Duanapalli
5	TANGANAPALLI-II	26	Duanpalli
6	Krushnachandra Nagaradiha	27	SUNDARAPUR-I
7	LAXMIPUR-1	28	SUNDARAPUR-II
8	LAXMIPUR-2	29	SUNDARAPUR-III
9	NARENDRAPUR-I	30	SUNDARAPUR-IV
10	NARENDRAPUR-II	31	SUNDARAPUR-IV
11	NARENDRAPUR-III	32	Daneiberhampur
12	Jaganathpur	33	Pattapur
13	RAGHUNATHPUR-I	34	Landabaunsa
14	RAGHUNATHPUR-II	35	Bhikaripalli
15	GOVINDAPUR-I	36	K.Bagadapalli
16	GOVINDAPUR-II	37	Nuapalli
17	Nauli	38	Telapalli
18	Karapalli	39	Katuru
19	Narasinghapur	40	Lokanathpur
20	Bhramaniapalli	41	KARATALI-I
21	Samantarapur	42	KARATALI-II

Contd....

Polling Station Level Election Results

Polling Station-wise Votes Secured by Overall Top Five Parties in Chhatrapur Assembly in Assembly Election (AE) under Berhampur Parliamentary Constituency in Odisha (2019)

Number of Polling Station	Winner - Subash Chandra Behera (BJD)	Runner-up - Prasanta Kumar Kar (BJP)	3rd - Pradeep Kumar Sethy (CPI)	4th - Ramahari Behera (BSP)	5th - Natabara Behera (RAIM)	NOTA	Other	Total Votes Secured
36	406	190	28	10	16	11	24	685
37	294	166	57	6	9	12	25	569
38	204	192	188	10	4	1	7	606
39	333	319	42	3	5	4	5	711
40	281	189	41	7	2	6	6	532
41	332	308	80	8	10	9	19	766
42	469	206	33	7	4	5	7	731
43	173	167	172	11	3	10	13	549
44	290	270	88	11	4	6	10	679
45	325	295	27	10	4	3	4	668
46	238	212	6	2	2	12	25	497
47	224	228	14	6	2	10	11	495
48	241	146	40	3	9	9	17	465
49	202	166	73	5	8	7	7	468
50	571	221	10	7	6	23	23	861
51	392	258	24	6	3	2	6	691
52	201	245	5	6	3	4	5	469
53	449	247	12	12	5	7	10	742
54	413	350	26	9	11	13	29	851
55	331	242	4	6	12	2	22	619
56	294	268	271	8	6	5	10	862
57	203	222	160	5	2	1	2	595
58	238	187	130	6	2	12	16	591
59	353	315	21	4	2	2	7	704
60	329	341	57	6	10	6	12	761
61	323	289	107	8	7	17	20	771
62	248	135	18	7	6	9	15	438
63	343	94	37	3	3	0	3	483
64	303	317	77	12	13	10	35	767
65	284	280	62	8	4	2	11	651
66	226	205	108	4	4	4	4	555
67	230	85	17	1	3	0	0	336
68	162	200	66	3	2	7	4	444
69	533	152	154	8	6	8	11	872
70	366	210	165	4	3	11	14	773

Contd....

Polling Station Level Election Results

Winner, Runner-up and 3rd Party Position & Winning Margin According to Polling Stations in Chhatrapur Assembly in Assembly Election (AE) under Berhampur Parliamentary Constituency in Odisha (2019)

Polling Station Number	Winner Party	Winner Votes (%)	Runner-up Party	Runner-up Votes (%)	Winning Margin Votes (%)	Third Party	Third Party Votes (%)	Other Votes (%)
71	BJD	343 (44.2)	BJP	309 (39.82)	34 (4.38)	CPI	83 (10.7)	41 (5.28)
72	BJD	401 (57.95)	BJP	207 (29.91)	194 (28.04)	CPI	57 (8.24)	27 (3.9)
73	BJD	301 (43.5)	CPI	218 (31.5)	83 (12)	BJP	150 (21.68)	23 (3.32)
74	BJD	211 (52.36)	BJP	142 (35.24)	69 (17.12)	CPI	24 (5.96)	26 (6.45)
75	BJD	259 (75.29)	BJP	57 (16.57)	202 (58.72)	CPI	10 (2.91)	18 (5.23)
76	BJD	161 (41.07)	BJP	119 (30.36)	42 (10.71)	CPI	89 (22.7)	23 (5.87)
77	BJD	276 (53.49)	BJP	192 (37.21)	84 (16.28)	CPI	20 (3.88)	28 (5.43)
78	BJD	281 (43.43)	BJP	267 (41.27)	14 (2.16)	CPI	59 (9.12)	40 (6.18)
79	BJD	503 (74.19)	BJP	92 (13.57)	411 (60.62)	CPI	49 (7.23)	34 (5.01)
80	CPI	127 (39.2)	BJD	101 (31.17)	26 (8.03)	BJP	65 (20.06)	31 (9.57)
81	BJD	150 (70.75)	CPI	29 (13.68)	121 (57.07)	BJP	27 (12.74)	6 (2.83)
82	BJD	271 (41.44)	BJP	260 (39.76)	11 (1.68)	CPI	93 (14.22)	30 (4.59)
83	BJD	329 (47)	BJP	178 (25.43)	151 (21.57)	CPI	157 (22.43)	36 (5.14)
84	BJD	157 (66.24)	BJP	69 (29.11)	88 (37.13)	CPI	4 (1.69)	7 (2.95)
85	BJD	273 (54.71)	BJP	193 (38.68)	80 (16.03)	CPI	16 (3.21)	17 (3.41)
86	BJD	437 (52.4)	BJP	339 (40.65)	98 (11.75)	BSP	21 (2.52)	37 (4.44)
87	BJD	393 (58.22)	BJP	238 (35.26)	155 (22.96)	CPI	23 (3.41)	21 (3.11)
88	BJD	271 (63.02)	BJP	131 (30.47)	140 (32.55)	CPI	12 (2.79)	16 (3.72)
89	BJD	252 (64.62)	BJP	132 (33.85)	120 (30.77)	CPI	3 (0.77)	3 (0.77)
90	BJD	369 (50.55)	BJP	268 (36.71)	101 (13.84)	CPI	61 (8.36)	32 (4.38)
91	BJP	259 (50.49)	BJD	202 (39.38)	57 (11.11)	CPI	20 (3.9)	32 (6.24)
92	BJP	234 (44.07)	BJD	224 (42.18)	10 (1.89)	CPI	37 (6.97)	36 (6.78)
93	BJD	472 (66.39)	BJP	167 (23.49)	305 (42.9)	CPI	25 (3.52)	47 (6.61)
94	BJD	278 (57.92)	BJP	162 (33.75)	116 (24.17)	CPI	20 (4.17)	20 (4.17)
95	BJD	444 (48.37)	BJP	321 (34.97)	123 (13.4)	CPI	112 (12.2)	41 (4.47)
96	BJD	92 (46.46)	BJP	87 (43.94)	5 (2.52)	CPI	13 (6.57)	6 (3.03)
97	CPI	279 (67.55)	BJP	59 (14.29)	220 (53.26)	BJD	49 (11.86)	26 (6.3)
98	BJD	442 (79.64)	BJP	57 (10.27)	385 (69.37)	CPI	20 (3.6)	36 (6.49)
99	BJD	459 (61.36)	BJP	231 (30.88)	228 (30.48)	CPI	17 (2.27)	41 (5.48)
100	BJP	478 (51.34)	BJD	387 (41.57)	91 (9.77)	CPI	29 (3.11)	37 (3.97)
101	BJP	383 (52.04)	BJD	305 (41.44)	78 (10.6)	CPI	23 (3.13)	25 (3.4)
102	BJD	505 (48.42)	BJP	479 (45.93)	26 (2.49)	CPI	17 (1.63)	42 (4.03)
103	BJD	460 (49.73)	BJP	384 (41.51)	76 (8.22)	CPI	20 (2.16)	61 (6.59)
104	BJP	356 (47.72)	BJD	329 (44.1)	27 (3.62)	CPI	13 (1.74)	48 (6.43)
105	BJP	328 (83.25)	BJD	56 (14.21)	272 (69.04)	BSP	3 (0.76)	7 (1.78)

Contd....

Socio-Economic Amenities - Rural

Access to Education Facilities

Particulars	Number of Villages (% of Population)				
	Available	Not Available	If Not Available (Distance of Nearest Facility)		
			A	B	C
Govt. Primary School	151 (99)	6 (1)	6 (1)	0 (0)	0 (0)
Private Primary School	11 (18)	146 (82)	0 (0)	0 (0)	0 (0)
Govt. Middle School	84 (77)	73 (23)	62 (20)	9 (3)	0 (0)
Private Middle School	8 (9)	149 (91)	0 (0)	0 (0)	0 (0)
Govt. Secondary School	31 (36)	126 (64)	82 (44)	31 (14)	0 (0)
Private Secondary School	7 (8)	150 (92)	12 (7)	1 (0)	0 (0)
Govt. Senior Secondary School	4 (5)	153 (95)	23 (19)	53 (34)	23 (16)
Private Senior Secondary School	4 (5)	153 (95)	20 (9)	29 (9)	1 (2)
Govt. Arts and Science Degree College	1 (1)	156 (99)	15 (14)	45 (33)	61 (33)
Private Arts and Science Degree College	3 (4)	154 (96)	10 (5)	17 (7)	5 (2)
Govt. Engineering College	0 (0)	157 (100)	1 (1)	13 (13)	141 (85)
Private Engineering College	2 (1)	155 (99)	0 (0)	0 (0)	0 (0)
Govt. Medicine College	0 (0)	157 (100)	0 (0)	3 (4)	154 (96)
Private Medicine College	0 (0)	157 (100)	0 (0)	0 (0)	0 (0)
Govt. Management Institute	0 (0)	157 (100)	0 (0)	4 (5)	151 (94)
Private Management Institute	0 (0)	157 (100)	0 (0)	1 (0)	1 (0)
Govt. Polytechnic	0 (0)	157 (100)	0 (0)	3 (4)	130 (80)
Private Polytechnic	0 (0)	157 (100)	0 (0)	7 (8)	14 (7)
Govt. Vocational Training School/ITI	0 (0)	157 (100)	6 (7)	8 (6)	29 (24)
Private Vocational Training School/ITI	0 (0)	157 (100)	5 (3)	34 (27)	73 (32)
Govt. Non Formal Training Centre	0 (0)	157 (100)	0 (0)	0 (0)	23 (12)
Private Non Formal Training Centre	0 (0)	157 (100)	0 (0)	0 (0)	65 (36)
Govt. School For Disabled	0 (0)	157 (100)	2 (3)	2 (2)	83 (46)
Private School For Disabled	0 (0)	157 (100)	11 (9)	23 (17)	31 (20)
Government Others	0 (0)	157 (100)	1 (1)	0 (0)	0 (0)
Private Others	0 (0)	157 (100)	0 (0)	1 (0)	1 (0)

Note : Distance A : Less than 5 km; B : Between 5-10 km; C : 10+ km.; Source : Data Analysis is based on 2011 Census.

DISCLAIMER

The Terms of Use and Disclaimer of Datanet India Private Limited (hereinafter referred to as "Datanet") for use of this analysis report of **Chhatrapur Assembly Constituency (Chhatrapur Vidhan Sabha)** :-

1. **Assembly Factbook™** is a Registered Trade Mark owned by Datanet.
2. All the maps are sketched and graphical representation only and have not been drawn to the scale and also not to represent the actual geographical area or boundary of the unit.
3. The data for the aforesaid analysis is based on authentic sources and has been culled from the various publications of Census, CSO and NSSO for district and block level data, various central and state government departments, Central & State Elections Commissions and the concerned Returning Officers' releases, Electoral Rolls, Election results and allied publications, internal assessment, surveys, estimates and analysis. Therefore, certain adjustment of data at micro level may have been done to arrive closer to the macro data.
4. Data have been provided on an "As Is" and "As AVAILABLE" basis
5. The colours shown in the maps or diagram and charts of a particular party, alliance or AC are indicative and do not represent them.
6. This publication which includes maps, sheets, graphs and data would be the property under copyright of Datanet only. The user may use these for its internal study, analysis and research purposes. It's public display, re-selling or any commercial uses by the user are not allowed.
7. Datanet has taken due care and caution in compilation and processing of data and allied information, but does not guarantee the accuracy, adequacy or completeness of any information/analysis and will be not responsible for any errors or omissions or for the results obtained from the use of such information/analysis.
8. All the contents for the publication have been culled from various authentic sources and Datanet reasonably believes such sources to be reliable, but does not make any representations, express or implied as to the accuracy or fitness of use of such information. The information or contents of the information/analysis do not constitute advice and should not be relied upon in making (or refraining from making) any decision. Any reliance placed upon the information provided by Datanet is the sole responsibility and strictly at the user's risk.
9. In no event will Datanet be liable for any damages (including, without limitation, damages for loss of business projects, or loss of profits) arising in contract, tort or otherwise from the use of or inability to use any of its contents, or from any action taken (or refrained from being taken) as a result of using the analysis or any of its contents. Datanet its directors, owners, editors, officials, employees, distributor and agents or any associate will not be liable for any errors in the information contained or any consequences arising from the use of the contents of the provided information/analysis.
10. If any provision of these terms and conditions is held invalid or illegal or unenforceable for any reason by any court of competent jurisdiction, such provision shall be severed and the remainder of provisions of the terms and conditions shall continue in full force and effect as if the Term of Use had been executed with the invalid, illegal or unenforceable provision eliminated.
11. If there are any discrepancies in the information provided, please bring it to attention of Datanet for suitable rectification measures.

**Buy Online This Complete Book At
Datanet India eBooks Store**

www.indiastatpublications.com

or go directly at

[http://www.indiastatpublications.com/
Assembly_factbook/Odisha/Berhampur/Chhatrapur](http://www.indiastatpublications.com/Assembly_factbook/Odisha/Berhampur/Chhatrapur)

 **india**stat**elections**

ISBN : 978-93-5301-890-0

