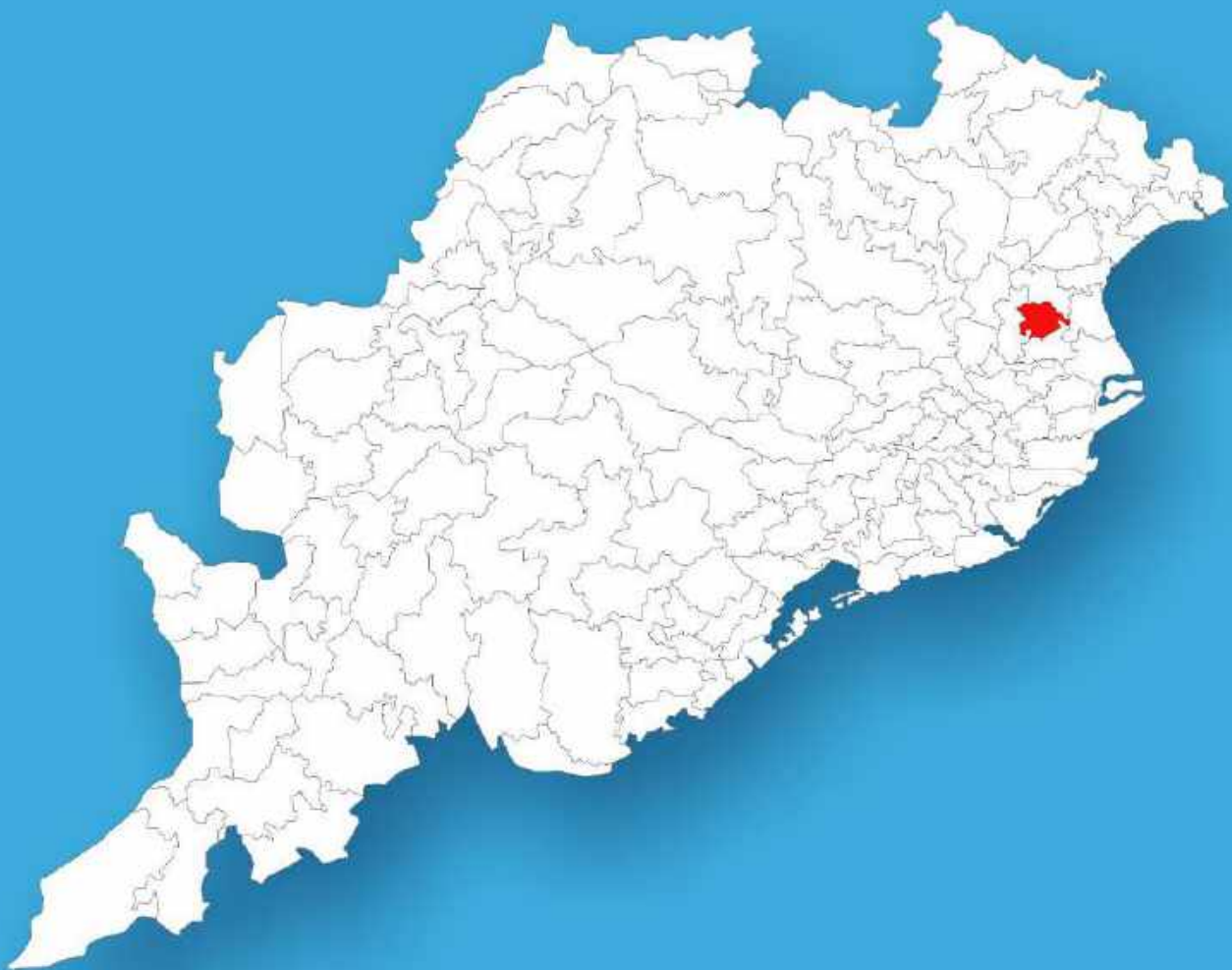




Odisha

# Assembly Factbook™

Bhadrak Assembly Constituency



Key Electoral Data of Bhadrak  
Assembly Constituency (Vidhan Sabha)

Odisha

# Assembly Factbook™

Bhadrak Assembly Constituency



Bhadrak Vidhan Sabha

## **Editor & Director**

Dr. R.K. Thukral

## **Research Editor**

Dr. Shafeeq Rahman

## **Compiled, Researched and Published by Datanet India Pvt. Ltd.**

D-100, 1st Floor,

Okhla Industrial Area, Phase-I,  
New Delhi- 110020.

Ph.: 91-11- 43580781-84

Email : support@indiastatpublications.com

Website : www.indiastatelections.com

## **Online Book Store :**

www.indiastatpublications.com

**Report No. :** AFB/OD-044-0125

**ISBN :** 978-93-5301-879-5

**First Edition :** January, 2018

**Eighth Updated Edition :** January, 2025

**Price :** Rs. 11500/-

US\$ 310

**© Datanet India Pvt. Ltd.**

All rights reserved. No part of this book may be reproduced, stored in a retrieval system or transmitted in any form or by any means, mechanical photocopying, photographing, scanning, recording or otherwise without the prior written permission of the publisher. Please refer to Disclaimer at page no. 222 for the use of this publication.

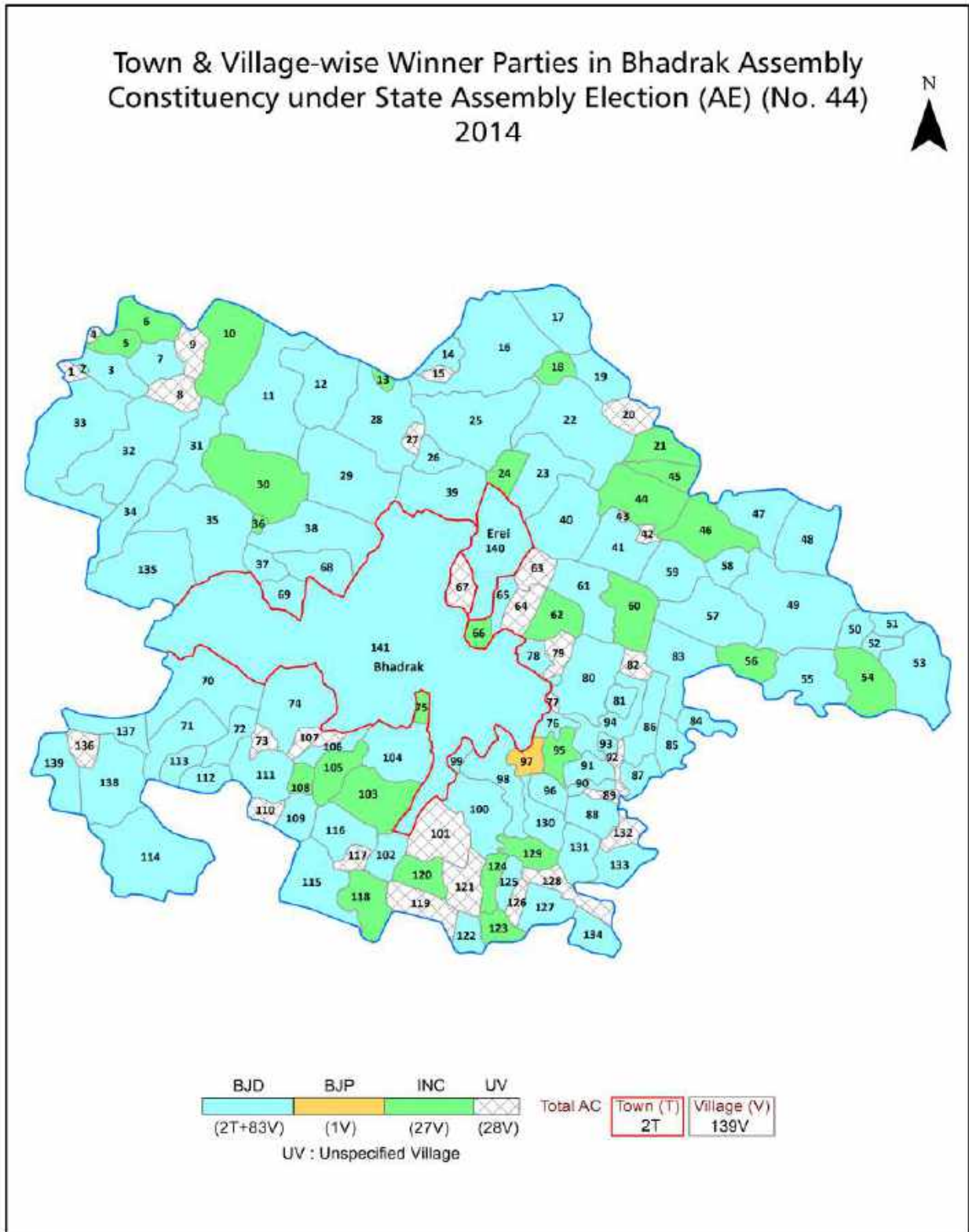
Printed in India

# Contents

No.	Particulars	Page No.
	<b>Introduction</b>	
1	Assembly Constituency - (Vidhan Sabha) at a Glance   Features of Assembly as per Delimitation Commission of India (2008)	1-2
	<b>Location and Political Maps</b>	
2	Location Map   Boundaries of Assembly Constituency - (Vidhan Sabha in District   Boundaries of Assembly Constituency under Parliamentary Constituency - (Lok Sabha)   Town & Village-wise Winner Parties- 2024-PE, 2024-AE, 2019-PE, 2019-AE, 2014-PE, 2014-AE, 2009-PE and 2009-AE	3-11
	<b>Administrative Setup (2011)</b>	
3	District   Sub-district   Towns   Villages   Inhabited Villages   Uninhabited Villages   Village Panchayat   Intermediate Panchayat	12-18
	<b>Demographics (2011)</b>	
4	Population   Households   Rural/Urban Population   Towns and Villages by Population Size   Sex Ratio (Total & 0-6 Years)   Religious Population   Social Population   Literacy Rate	19-20
	<b>Electoral Features</b>	
5	Important Dates of Last Elections Held   Electors by Gender   Service Electors   Voters   Voters Turnout   Polling Stations & Average Number of Electors per Polling Station   Electors by Age Group   Present Elected Representatives	21-26
	<b>Historical Summary Election Results</b>	
6	Vote Share of Major Parties   Winning Margin (Number & Percentage   Polarity of Parties   Summary Result of Assembly Segment of Parliamentary Elections 2024, 2019, 2014, 2009, 2004 and 1999   Summary Result of Assembly Elections 2024, 2019, 2014, 2009, 2004, 2000, 1995, 1990, 1985, 1980, 1977, 1974, 1971, 1967, 1961, 1957 and 1952	27-51
	<b>Polling Station Level Election Results</b>	
7	Name and Number of Polling Station 2024-PE, 2024-AE, 2019-PE, 2019-AE, 2014-PE, 2014-AE, 2009-PE and 2009-AE   Polling Station-wise Electors, Voters & Voters Turnout 2024-PE, 2024-AE, 2019-PE, 2019-AE, 2014-PE, 2014-AE, 2009-PE and 2009-AE   Polling Station wise Elections Results 2024-PE, 2024-AE, 2019-PE, 2019-AE, 2014-PE, 2014-AE, 2009-PE and 2009-AE	52-201
	<b>Share of Assembly Constituency</b>	
8	Share of Assembly Constituency - (Vidhan Sabha) in State, District and Parliamentary Constituency - (Lok Sabha)	202
	<b>Socio-Economic Amenities (2011)</b>	
9	Access to Administrative Units   Agricultural, Manufacturing and Industrial Commodities   Demographic Indicators   Education   Health & Manpower   Drinking Water Supply   Sanitation   Entertainment and Recreations Infrastructure   Power   Food Allocation Distribution and Marketing of Agriculture Commodities Infrastructure   Transport and Road Infrastructure   Communication   Banking and Financial Services   Land Use   Irrigation Source	204-218
10	<b>Abbreviation &amp; Sources</b>	219-220
11	<b>Disclaimer</b>	222



**Location & Political Map**



## Administrative Setup

### List of Village Panchayat & Intermediate Panchayat (Block) Name - 2011

Village Name	Village Panchayat Name	Intermediate Panchayat Name
Aharpada	Khandatada	Bhadrak
Amargadia	Randia	Bhadrak
Ambroli	Ambroli	Bhadrak
Anantapur	Bishnupur Bindha	Bhadrak
Andheipali	Andheipali	Bhadrak
Arnapal	Arnapal	Bhadrak
Asura	Rahanja	Bhadrak
Atto	Sabarang	Bhadrak
Bagamara	Geltua	Bhadrak
Bahadalpur	Jagadalpur	Bhadrak
Bahudarada	Bahudarada	Bhadrak
Balabhadrapur	Kalei	Bhadrak
Balajitpada	Kalei	Bhadrak
Balanta	Jagadalpur	Bhadrak
Bandhgan	Bandhagan	Bhadrak
Bania	Bania	Bhadrak
Bantia	Banitia	Bhadrak
Baradadihi	Korkara	Bhadrak
Baranga	Berhampur	Bhadrak
Barapada	Randia	Bhadrak
Basalpur	Bental	Bhadrak
Basuapada	Erada	Bhadrak
Basudebpur	Sahada	Bhadrak
Bental	Bental	Bhadrak
Betra	Betada	Bhadrak
Bhabanibindha	Bental	Bhadrak
Bhagabanpur	Bania	Bhadrak
Bhaktibrahmapur	Arnapal	Bhadrak
Bhattira	Berhampur	Bhadrak

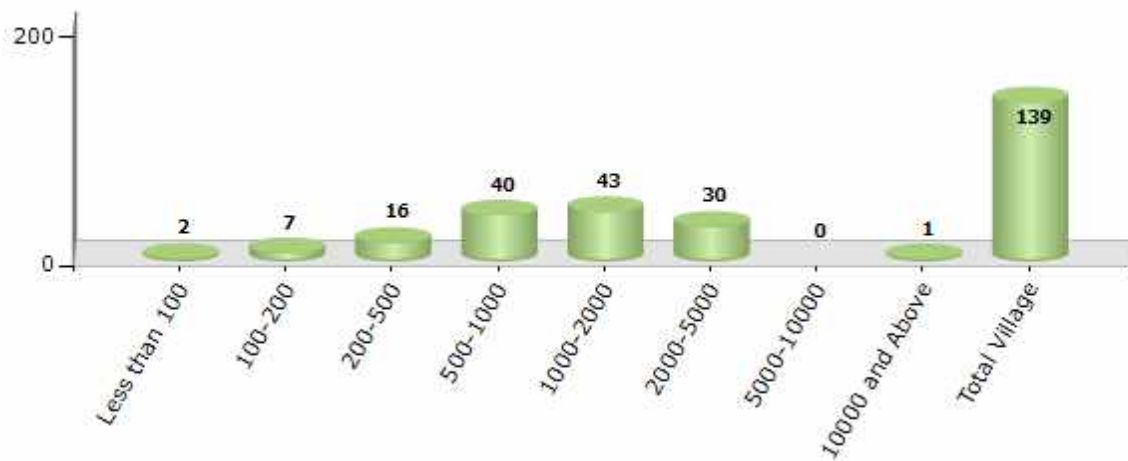
Contd....

Demographic

Number of Villages by Population Size - 2011

Less than 100	100-200	200-500	500-1000	1000-2000	2000-5000	5000-10000	10000 and Above	Total Village
2	7	16	40	43	30	0	1	139

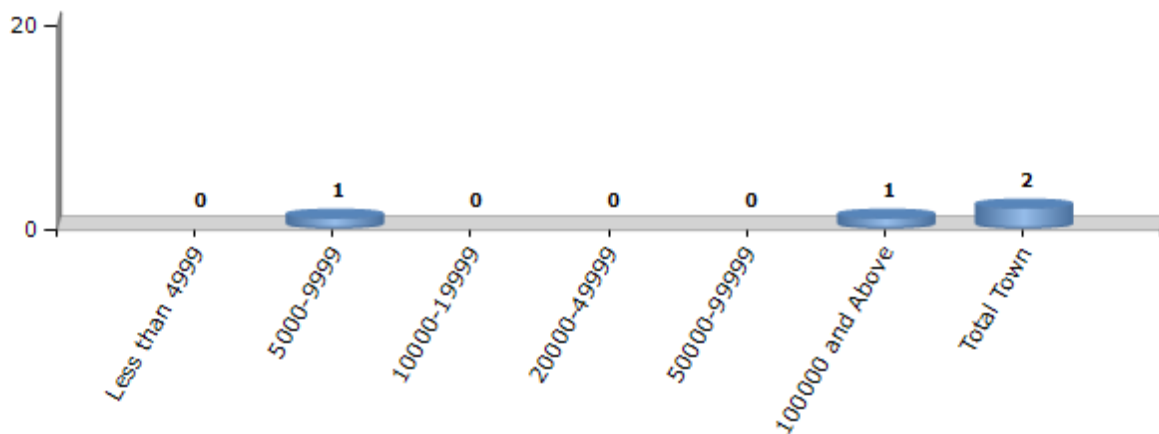
Number of Villages by Population Size - 2011



Number of Towns by Population Size - 2011

Less than 4999	5000-9999	10000-19999	20000-49999	50000-99999	100000 and Above	Total Town
0	1	0	0	0	1	2

Number of Towns by Population Size - 2011

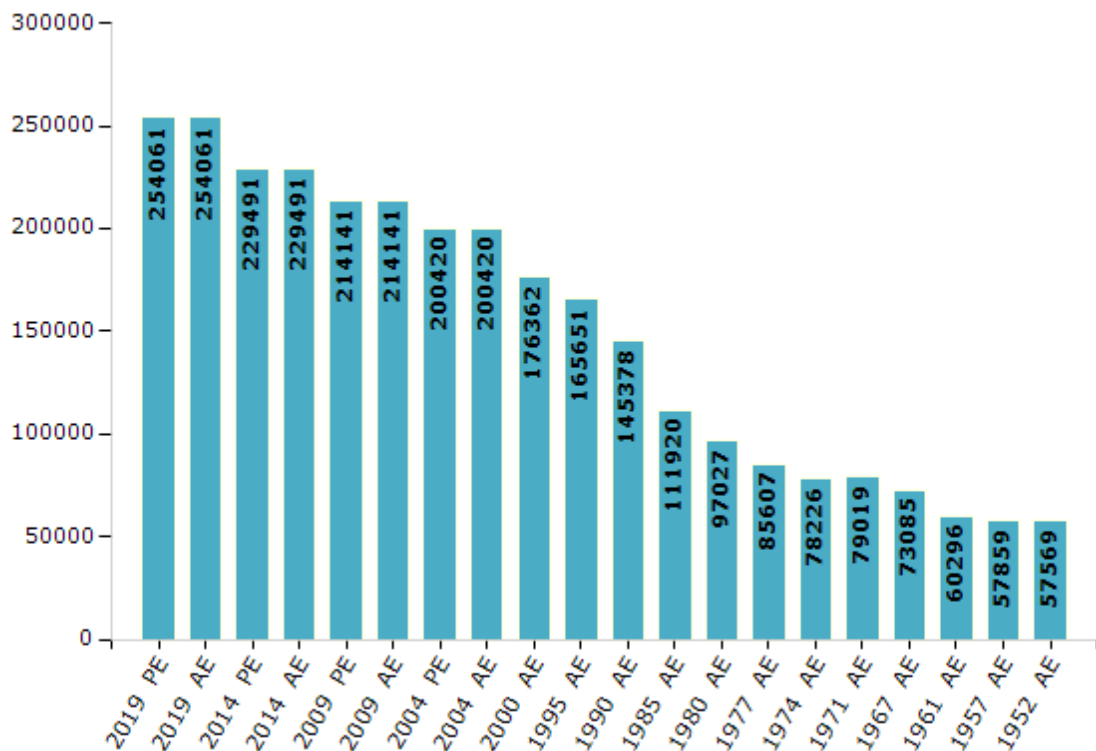


## Electoral Features

### Electors by Male & Female

Year	Male	Female	Others	Total	Year	Male	Female	Others	Total
2019 PE	131204	122823	34	254061	1990 AE	80690	64688	-	145378
2019 AE	131204	122823	34	254061	1985 AE	60486	51434	-	111920
2014 PE	120667	108805	19	229491	1980 AE	52944	44083	-	97027
2014 AE	120667	108805	19	229491	1977 AE	46817	38790	-	85607
2009 PE	112193	101948	-	214141	1974 AE	49846	28380	-	78226
2009 AE	112193	101948	-	214141	1971 AE	42480	36539	-	79019
2004 PE	104066	96354	-	200420	1967 AE	73085	0	-	73085
2004 AE	104066	96354	-	200420	1961 AE	60296	0	-	60296
2000 AE	91737	84625	-	176362	1957 AE	57859	0	-	57859
1999 PE	-	-	-	-	1952 AE	-	-	-	57569
1995 AE	88189	77462	-	165651					

Number of Electors



Note : AE : Assembly Election, PE : Assembly Segment of Parliamentary Election

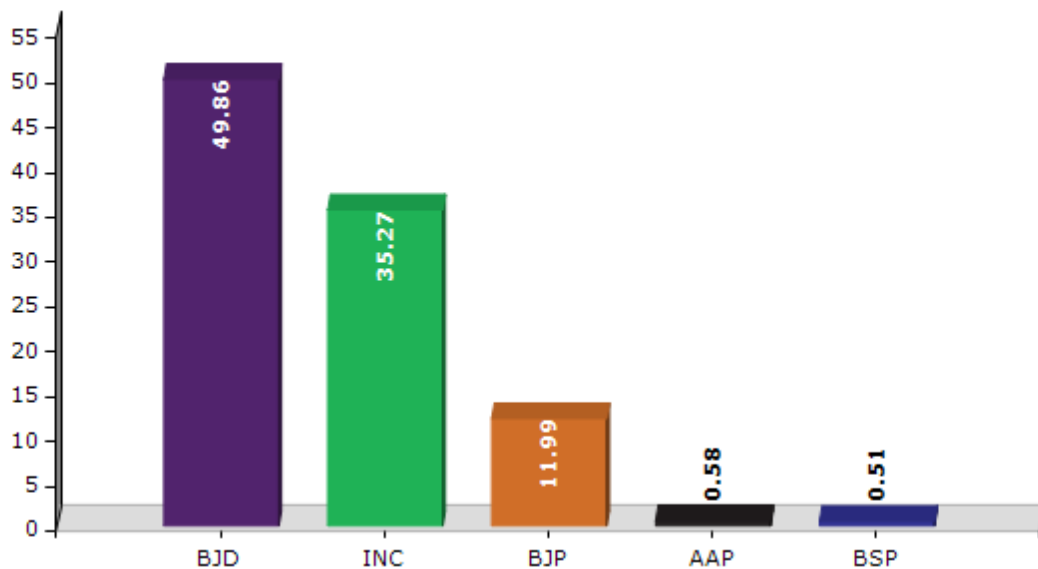


## Historical Summary Election Results

### Summary Result of Assembly Election - 2014

Candidate Name	Party	Votes	Votes %
Jugal Kishore Pattnaik	BJD	80582	49.86
Naren Pallai	INC	56995	35.27
Pradip Nayak	BJP	19384	11.99
Akhtar Alli Khan	AAP	945	0.58
Ramahari Das	BSP	825	0.51
Kallola Kanta Swain	SKD	692	0.43
Sanjaya Kumar Nayak	RAIM	312	0.19
Basanta Mahalik	IND	278	0.17
Mustak Ahamad Azad	KS	276	0.17
Haji Sk Abdul Istar	SP	258	0.16
Sekh Mahammad Alli Jinna	OJM	237	0.15
	NOTA	832	0.51

Votes Percentage of Top Parties - 2014



## Polling Station Level Election Results

### Number and Name of Polling Stations (PS) (2019 AE)

Number of Polling Stations	Name of Polling Stations	Number of Polling Stations	Name of Polling Stations
1	Edadei	22	Susiladeipur
2	Sirapur	23	Rambila
3	Rautaragadia Patana	24	Keshpur
4	Muktadhi	25	Rambhila
5	Kaupur	26	Rambhila-1
6	Kaupur	27	Jagadalpur
7	Kusunnagar	28	Jagadalpur-1
8	Daisinga	29	Sarasatia
9	Daisinga	30	Tagira
10	Chadheya	31	Rahanja
11	Nalagara	32	Rahanja
12	Kudiamal	33	Rahanja
13	Banitia(Part)	34	Bhadalpur
14	Banitia	35	Balanta
15	Banitia-1	36	Chandigan
16	Ambaroli	37	Chandigan
17	Ambaroli	38	Kodabaruan
18	Bhandhagan	39	Kodabaruan-1
19	Bhandhagan	40	Asura(Part)
20	Kalidaspur	41	Asura
21	Panchapada	42	Tisalpur

Contd....

**Polling Station Level Election Results**

**Polling Station-wise Votes Secured by Overall Top Five Parties in Bhadrak Assembly in Assembly Election (AE) under Bhadrak Parliamentary Constituency in Odisha (2019)**

Number of Polling Station	Winner - Sanjib Kumar Mallick (BJD)	Runner-up - Dr. Pradip Nayak (BJP)	3rd - Nalini Kanta Mohanty (INC)	4th - Kanhu Charan Barik (IND)	5th - Sasmita Patra (BSP)	NOTA	Other	Total Votes Secured
36	242	328	37	2	1	3	7	620
37	361	291	43	1	4	0	2	702
38	298	183	88	2	1	0	2	574
39	317	172	51	4	5	4	1	554
40	487	449	42	1	6	2	9	996
41	403	384	30	5	3	7	4	836
42	136	109	15	0	3	0	2	265
43	388	293	58	2	3	4	5	753
44	522	254	58	2	5	6	5	852
45	198	191	65	0	3	3	0	460
46	400	341	211	4	1	3	2	962
47	389	341	80	2	2	5	1	820
48	350	248	100	2	1	4	2	707
49	193	178	33	0	1	0	3	408
50	469	227	24	1	5	5	10	741
51	249	310	33	0	1	3	4	600
52	212	140	36	0	2	1	4	395
53	548	367	49	10	6	9	12	1001
54	445	336	52	16	5	8	5	867
55	296	280	91	0	2	3	7	679
56	225	267	42	0	2	2	3	541
57	336	376	30	3	3	4	4	756
58	313	287	83	0	3	0	2	688
59	476	177	46	1	0	2	3	705
60	237	115	41	2	0	3	5	403
61	288	265	41	2	4	3	30	633
62	237	294	38	2	1	2	21	595
63	368	232	94	1	0	2	4	701
64	471	125	62	4	3	8	8	681
65	421	346	34	3	2	6	2	814
66	416	232	47	1	2	4	3	705
67	306	472	53	5	2	7	10	855
68	366	436	49	8	3	9	8	879
69	414	457	29	3	2	3	7	915
70	319	419	51	1	2	4	8	804

Contd....

## Polling Station Level Election Results

### Winner, Runner-up and 3rd Party Position & Winning Margin According to Polling Stations in Bhadrak Assembly in Assembly Election (AE) under Bhadrak Parliamentary Constituency in Odisha (2019)

Polling Station Number	Winner Party	Winner Votes (%)	Runner-up Party	Runner-up Votes (%)	Winning Margin Votes (%)	Third Party	Third Party Votes (%)	Other Votes (%)
71	BJP	367 (56.12)	BJD	211 (32.26)	156 (23.86)	INC	60 (9.17)	16 (2.45)
72	BJP	338 (49.85)	BJD	255 (37.61)	83 (12.24)	INC	67 (9.88)	18 (2.65)
73	BJP	406 (58.5)	BJD	240 (34.58)	166 (23.92)	INC	38 (5.48)	10 (1.44)
74	BJP	347 (47.8)	BJD	301 (41.46)	46 (6.34)	INC	60 (8.26)	18 (2.48)
75	NV	NV (NV)	NV	NV (NV)	NV (NV)	NV	NV (NV)	NV (NV)
76	BJD	457 (57.85)	BJP	297 (37.59)	160 (20.26)	INC	30 (3.8)	6 (0.76)
77	BJD	402 (53.03)	BJP	319 (42.08)	83 (10.95)	INC	23 (3.03)	14 (1.85)
78	BJD	469 (60.05)	BJP	242 (30.99)	227 (29.06)	INC	57 (7.3)	13 (1.66)
79	BJD	344 (55.04)	BJP	225 (36)	119 (19.04)	INC	31 (4.96)	25 (4)
80	BJD	282 (69.29)	BJP	104 (25.55)	178 (43.74)	INC	10 (2.46)	11 (2.7)
81	BJD	185 (51.82)	BJP	151 (42.3)	34 (9.52)	INC	18 (5.04)	3 (0.84)
82	BJD	292 (51.68)	BJP	224 (39.65)	68 (12.03)	INC	27 (4.78)	22 (3.89)
83	BJD	500 (52.74)	BJP	343 (36.18)	157 (16.56)	INC	71 (7.49)	34 (3.59)
84	BJD	346 (53.89)	INC	247 (38.47)	99 (15.42)	BJP	41 (6.39)	8 (1.25)
85	BJD	253 (54.18)	BJP	180 (38.54)	73 (15.64)	INC	32 (6.85)	2 (0.43)
86	BJP	279 (46.97)	BJD	275 (46.3)	4 (0.67)	INC	32 (5.39)	8 (1.35)
87	BJP	248 (48.25)	BJD	229 (44.55)	19 (3.7)	INC	28 (5.45)	9 (1.75)
88	BJD	386 (59.29)	BJP	210 (32.26)	176 (27.03)	INC	42 (6.45)	13 (2)
89	BJD	419 (68.69)	BJP	147 (24.1)	272 (44.59)	INC	36 (5.9)	8 (1.31)
90	BJD	461 (49.3)	BJP	383 (40.96)	78 (8.34)	INC	82 (8.77)	9 (0.96)
91	BJD	362 (50.91)	BJP	305 (42.9)	57 (8.01)	INC	36 (5.06)	8 (1.13)
92	BJD	312 (61.06)	BJP	166 (32.49)	146 (28.57)	INC	26 (5.09)	7 (1.37)
93	BJD	412 (60.68)	BJP	200 (29.46)	212 (31.22)	INC	60 (8.84)	7 (1.03)
94	BJP	446 (49.78)	BJD	334 (37.28)	112 (12.5)	INC	99 (11.05)	17 (1.9)
95	BJP	376 (52.73)	BJD	282 (39.55)	94 (13.18)	INC	41 (5.75)	14 (1.96)
96	BJD	339 (56.22)	BJP	225 (37.31)	114 (18.91)	INC	34 (5.64)	5 (0.83)
97	BJD	289 (53.92)	BJP	218 (40.67)	71 (13.25)	INC	23 (4.29)	6 (1.12)
98	BJD	270 (48.04)	BJP	234 (41.64)	36 (6.4)	INC	46 (8.19)	12 (2.14)
99	BJD	275 (56.24)	BJP	188 (38.45)	87 (17.79)	INC	21 (4.29)	5 (1.02)
100	BJD	487 (53.05)	BJP	304 (33.12)	183 (19.93)	INC	112 (12.2)	15 (1.63)
101	BJD	373 (46.11)	BJP	273 (33.75)	100 (12.36)	INC	148 (18.29)	15 (1.85)
102	BJD	223 (39.54)	BJP	214 (37.94)	9 (1.6)	INC	110 (19.5)	17 (3.01)
103	BJD	463 (59.36)	BJP	220 (28.21)	243 (31.15)	INC	75 (9.62)	22 (2.82)
104	BJD	271 (41.44)	BJP	241 (36.85)	30 (4.59)	INC	125 (19.11)	17 (2.6)
105	BJD	450 (60.32)	BJP	230 (30.83)	220 (29.49)	INC	56 (7.51)	10 (1.34)

Contd....

## Socio-Economic Amenities - Rural

### Access to Education Facilities

Particulars	Number of Villages (% of Population)				
	Available	Not Available	If Not Available (Distance of Nearest Facility)		
			A	B	C
Govt. Primary School	127 (98)	12 (2)	11 (2)	1 (0)	0 (0)
Private Primary School	18 (14)	121 (86)	0 (0)	0 (0)	0 (0)
Govt. Middle School	88 (82)	51 (18)	28 (12)	15 (5)	7 (1)
Private Middle School	9 (8)	130 (92)	1 (1)	0 (0)	0 (0)
Govt. Secondary School	43 (50)	96 (50)	78 (38)	15 (10)	0 (0)
Private Secondary School	6 (7)	133 (93)	2 (2)	1 (0)	0 (0)
Govt. Senior Secondary School	3 (3)	136 (97)	20 (11)	43 (31)	40 (26)
Private Senior Secondary School	3 (2)	136 (98)	12 (8)	11 (12)	7 (5)
Govt. Arts and Science Degree College	1 (1)	138 (99)	13 (6)	60 (49)	50 (32)
Private Arts and Science Degree College	1 (1)	138 (99)	1 (2)	5 (2)	8 (6)
Govt. Engineering College	1 (1)	138 (99)	0 (0)	0 (0)	0 (0)
Private Engineering College	2 (2)	137 (98)	1 (0)	14 (13)	122 (85)
Govt. Medicine College	0 (0)	139 (100)	0 (0)	0 (0)	139 (100)
Private Medicine College	0 (0)	139 (100)	0 (0)	0 (0)	0 (0)
Govt. Management Institute	0 (0)	139 (100)	0 (0)	0 (0)	24 (19)
Private Management Institute	0 (0)	139 (100)	5 (2)	42 (31)	68 (49)
Govt. Polytechnic	1 (1)	138 (99)	0 (0)	3 (3)	19 (17)
Private Polytechnic	0 (0)	139 (100)	5 (2)	40 (27)	64 (45)
Govt. Vocational Training School/ITI	0 (0)	139 (100)	0 (0)	0 (0)	3 (2)
Private Vocational Training School/ITI	0 (0)	139 (100)	13 (6)	63 (50)	56 (40)
Govt. Non Formal Training Centre	0 (0)	139 (100)	0 (0)	2 (2)	12 (8)
Private Non Formal Training Centre	0 (0)	139 (100)	14 (7)	60 (46)	46 (33)
Govt. School For Disabled	0 (0)	139 (100)	8 (4)	49 (38)	48 (31)
Private School For Disabled	0 (0)	139 (100)	1 (0)	11 (9)	16 (13)
Government Others	3 (5)	136 (95)	0 (0)	1 (2)	0 (0)
Private Others	0 (0)	139 (100)	0 (0)	0 (0)	1 (0)

Note : Distance A : Less than 5 km; B : Between 5-10 km; C : 10+ km.; Source : Data Analysis is based on 2011 Census.

## DISCLAIMER

The Terms of Use and Disclaimer of Datanet India Private Limited (hereinafter referred to as "Datanet") for use of this analysis report of **Bhadrak Assembly Constituency (Bhadrak Vidhan Sabha)** :-

1. **Assembly Factbook™** is a Registered Trade Mark owned by Datanet.
2. All the maps are sketched and graphical representation only and have not been drawn to the scale and also not to represent the actual geographical area or boundary of the unit.
3. The data for the aforesaid analysis is based on authentic sources and has been culled from the various publications of Census, CSO and NSSO for district and block level data, various central and state government departments, Central & State Elections Commissions and the concerned Returning Officers' releases, Electoral Rolls, Election results and allied publications, internal assessment, surveys, estimates and analysis. Therefore, certain adjustment of data at micro level may have been done to arrive closer to the macro data.
4. Data have been provided on an "As Is" and "As AVAILABLE" basis
5. The colours shown in the maps or diagram and charts of a particular party, alliance or AC are indicative and do not represent them.
6. This publication which includes maps, sheets, graphs and data would be the property under copyright of Datanet only. The user may use these for its internal study, analysis and research purposes. It's public display, re-selling or any commercial uses by the user are not allowed.
7. Datanet has taken due care and caution in compilation and processing of data and allied information, but does not guarantee the accuracy, adequacy or completeness of any information/analysis and will be not responsible for any errors or omissions or for the results obtained from the use of such information/analysis.
8. All the contents for the publication have been culled from various authentic sources and Datanet reasonably believes such sources to be reliable, but does not make any representations, express or implied as to the accuracy or fitness of use of such information. The information or contents of the information/analysis do not constitute advice and should not be relied upon in making (or refraining from making) any decision. Any reliance placed upon the information provided by Datanet is the sole responsibility and strictly at the user's risk.
9. In no event will Datanet be liable for any damages (including, without limitation, damages for loss of business projects, or loss of profits) arising in contract, tort or otherwise from the use of or inability to use any of its contents, or from any action taken (or refrained from being taken) as a result of using the analysis or any of its contents. Datanet its directors, owners, editors, officials, employees, distributor and agents or any associate will not be liable for any errors in the information contained or any consequences arising from the use of the contents of the provided information/analysis.
10. If any provision of these terms and conditions is held invalid or illegal or unenforceable for any reason by any court of competent jurisdiction, such provision shall be severed and the remainder of provisions of the terms and conditions shall continue in full force and effect as if the Term of Use had been executed with the invalid, illegal or unenforceable provision eliminated.
11. If there are any discrepancies in the information provided, please bring it to attention of Datanet for suitable rectification measures.



**Buy Online This Complete Book At**  
**Datanet India eBooks Store**

[www.indiastatpublications.com](http://www.indiastatpublications.com)

or go directly at

[http://www.indiastatpublications.com/  
Assembly\\_factbook/Odisha/Bhadrak/ Bhadrak](http://www.indiastatpublications.com/Assembly_factbook/Odisha/Bhadrak/Bhadrak)

 **india**stat**elections**

ISBN : 978-93-5301-879-5



9 789353 018795