



Odisha

# Assembly Factbook™

Soro Assembly Constituency



Key Electoral Data of Soro  
Assembly Constituency (Vidhan Sabha)

Odisha

# Assembly Factbook™

Soro Assembly Constituency



Soro Vidhan Sabha

## **Editor & Director**

Dr. R.K. Thukral

## **Research Editor**

Dr. Shafeeq Rahman

## **Compiled, Researched and Published by Datanet India Pvt. Ltd.**

D-100, 1st Floor,

Okhla Industrial Area, Phase-I,  
New Delhi- 110020.

Ph.: 91-11- 43580781-84

Email : support@indiastatpublications.com

Website : www.indiastatelections.com

## **Online Book Store :**

www.indiastatpublications.com

**Report No. :** AFB/OD-041-0125

**ISBN :** 978-93-5301-916-7

**First Edition :** January, 2018

**Eighth Updated Edition :** January, 2025

**Price :** Rs. 11500/-

US\$ 310

**© Datanet India Pvt. Ltd.**

All rights reserved. No part of this book may be reproduced, stored in a retrieval system or transmitted in any form or by any means, mechanical photocopying, photographing, scanning, recording or otherwise without the prior written permission of the publisher. Please refer to Disclaimer at page no. 216 for the use of this publication.

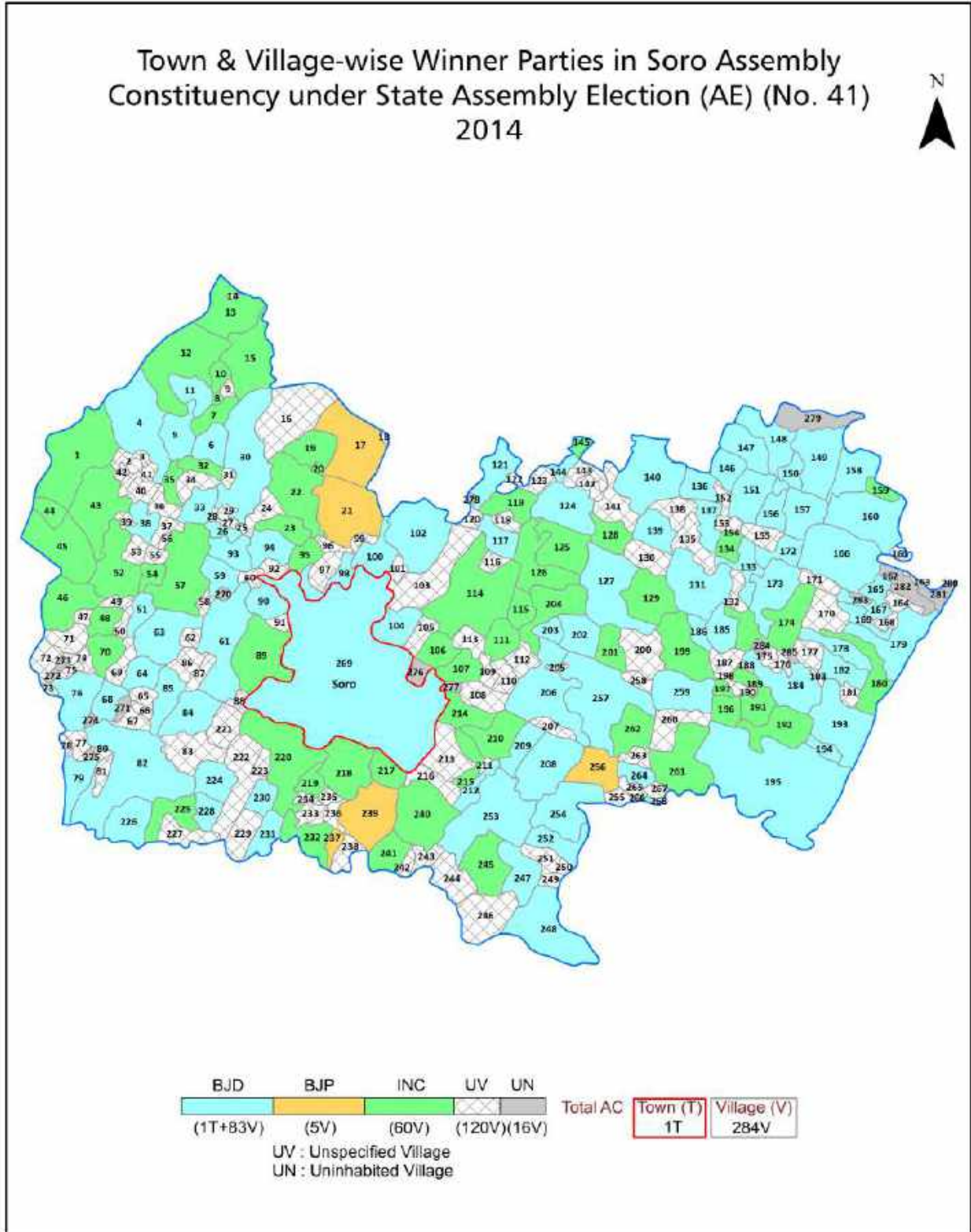
Printed in India

# Contents

No.	Particulars	Page No.
	<b>Introduction</b>	
1	Assembly Constituency - (Vidhan Sabha) at a Glance   Features of Assembly as per Delimitation Commission of India (2008)	1-2
	<b>Location and Political Maps</b>	
2	Location Map   Boundaries of Assembly Constituency - (Vidhan Sabha in District   Boundaries of Assembly Constituency under Parliamentary Constituency - (Lok Sabha)   Town & Village-wise Winner Parties- 2024-PE, 2024-AE, 2019-PE, 2019-AE, 2014-PE, 2014-AE, 2009-PE and 2009-AE	3-11
	<b>Administrative Setup (2011)</b>	
3	District   Sub-district   Towns   Villages   Inhabited Villages   Uninhabited Villages   Village Panchayat   Intermediate Panchayat	12-26
	<b>Demographics (2011)</b>	
4	Population   Households   Rural/Urban Population   Towns and Villages by Population Size   Sex Ratio (Total & 0-6 Years)   Religious Population   Social Population   Literacy Rate	27-28
	<b>Electoral Features</b>	
5	Important Dates of Last Elections Held   Electors by Gender   Service Electors   Voters   Voters Turnout   Polling Stations & Average Number of Electors per Polling Station   Electors by Age Group   Present Elected Representatives	29-34
	<b>Historical Summary Election Results</b>	
6	Vote Share of Major Parties   Winning Margin (Number & Percentage   Polarity of Parties   Summary Result of Assembly Segment of Parliamentary Elections 2024, 2019, 2014, 2009, 2004 and 1999   Summary Result of Assembly Elections 2024, 2019, 2014, 2009, 2004, 2000, 1995, 1990, 1985, 1980, 1977, 1974, 1971, 1967, 1961, 1957 and 1952	35-59
	<b>Polling Station Level Election Results</b>	
7	Name and Number of Polling Station 2024-PE, 2024-AE, 2019-PE, 2019-AE, 2014-PE, 2014-AE, 2009-PE and 2009-AE   Polling Station-wise Electors, Voters & Voters Turnout 2024-PE, 2024-AE, 2019-PE, 2019-AE, 2014-PE, 2014-AE, 2009-PE and 2009-AE   Polling Station wise Elections Results 2024-PE, 2024-AE, 2019-PE, 2019-AE, 2014-PE, 2014-AE, 2009-PE and 2009-AE	60-195
	<b>Share of Assembly Constituency</b>	
8	Share of Assembly Constituency - (Vidhan Sabha) in State, District and Parliamentary Constituency - (Lok Sabha)	196
	<b>Socio-Economic Amenities (2011)</b>	
9	Access to Administrative Units   Agricultural, Manufacturing and Industrial Commodities   Demographic Indicators   Education   Health & Manpower   Drinking Water Supply   Sanitation   Entertainment and Recreations Infrastructure   Power   Food Allocation Distribution and Marketing of Agriculture Commodities Infrastructure   Transport and Road Infrastructure   Communication   Banking and Financial Services   Land Use   Irrigation Source	198-212
10	<b>Abbreviation &amp; Sources</b>	213-214
11	<b>Disclaimer</b>	216



Location & Political Map



## Administrative Setup

### List of Village Panchayat & Intermediate Panchayat (Block) Name - 2011

Village Name	Village Panchayat Name	Intermediate Panchayat Name
Adia	Jadida	Soro
Agiria	Madhusudanpur	Soro
Aharpur	Anantapur	Soro
Ainri	Anantapur	Soro
Alada	Abhana	Bahanaga
Alipur	Talanagar	Soro
Anantapur	Anantapur	Soro
Angula	Mahumuhan	Soro
Anji	Anji	Bahanaga
Ankabrahmapur	Sajanpur	Soro
Apitira	Gopalpur	Bahanaga
Arala	Kalyani	Bahanaga
Aruha	Dandaharipur	Bahanaga
Aruhabad	Aruhabad	Bahanaga
Asimila	Dandaharipur	Bahanaga
Ataspur	Baripada	Bahanaga
Attapur	Attapur	Soro
Avana	Abhana	Bahanaga
Bagada	Sahaspura	Bahanaga
Baghua	Jadida	Soro
Bahanaga	Bahanaga	Bahanaga
Bainandamangarajpur	Nadigan	Soro
Bainchabanka	Madhusudanpur	Soro
Bajana	Saud	Bahanaga
Bajipur	Gopalpur	Bahanaga
Baladia	Sarasankha	Soro
Balanga	Pakhar	Soro
Balarampur	Baripada	Bahanaga
Balarampur	Pakhar	Soro

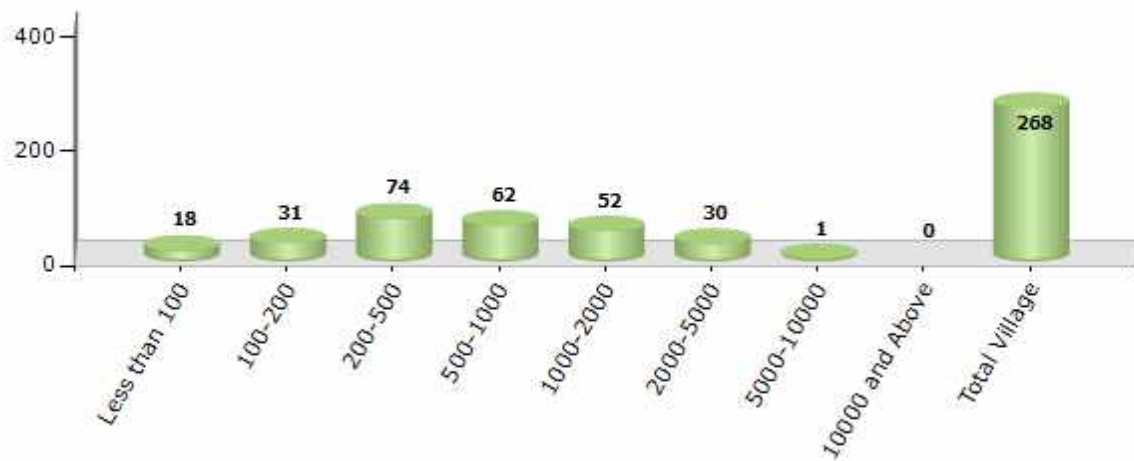
Contd....

Demographic

Number of Villages by Population Size - 2011

Less than 100	100-200	200-500	500-1000	1000-2000	2000-5000	5000-10000	10000 and Above	Total Village
18	31	74	62	52	30	1	0	268

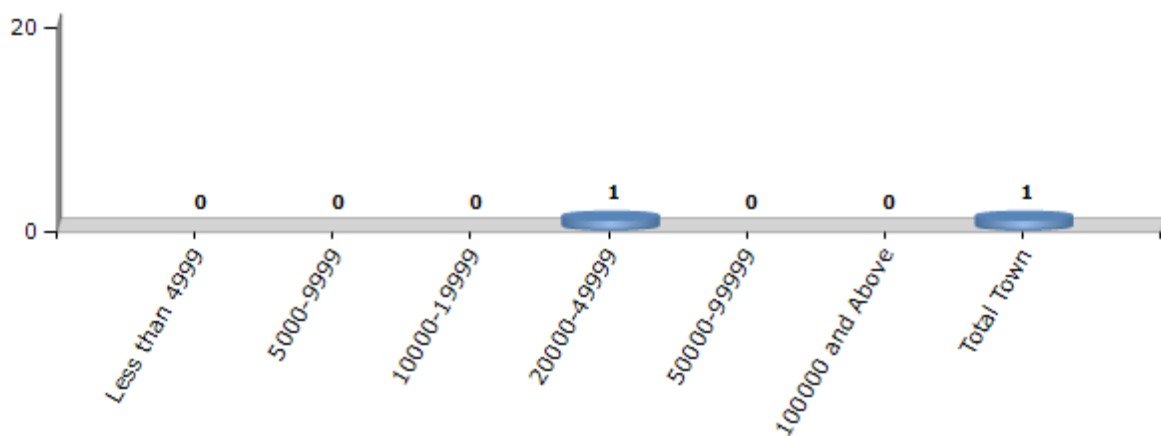
Number of Villages by Population Size - 2011



Number of Towns by Population Size - 2011

Less than 4999	5000-9999	10000-19999	20000-49999	50000-99999	100000 and Above	Total Town
0	0	0	1	0	0	1

Number of Towns by Population Size - 2011



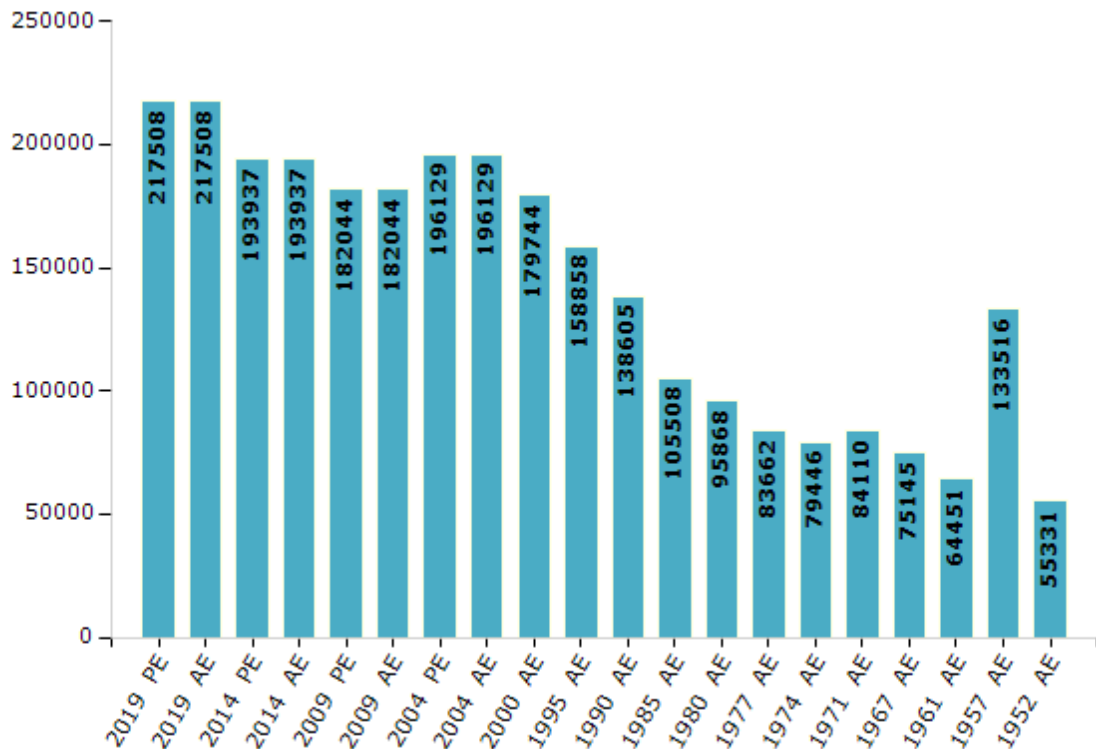
## Electoral Features

### Electors by Male & Female

Year	Male	Female	Others	Total
2019 PE	112182	105317	9	217508
2019 AE	112182	105317	9	217508
2014 PE	101356	92579	2	193937
2014 AE	101356	92579	2	193937
2009 PE	94176	87868	-	182044
2009 AE	94176	87868	-	182044
2004 PE	100419	95710	-	196129
2004 AE	100419	95710	-	196129
2000 AE	91505	88239	-	179744
1999 PE	-	-	-	-
1995 AE	83681	75177	-	158858

Year	Male	Female	Others	Total
1990 AE	75652	62953	-	138605
1985 AE	55675	49833	-	105508
1980 AE	51951	43917	-	95868
1977 AE	45536	38126	-	83662
1974 AE	41626	37820	-	79446
1971 AE	43845	40265	-	84110
1967 AE	75145	0	-	75145
1961 AE	64451	0	-	64451
1957 AE	133516	0	-	133516
1952 AE	-	-	-	55331

Number of Electors



Note : AE : Assembly Election, PE : Assembly Segment of Parliamentary Election

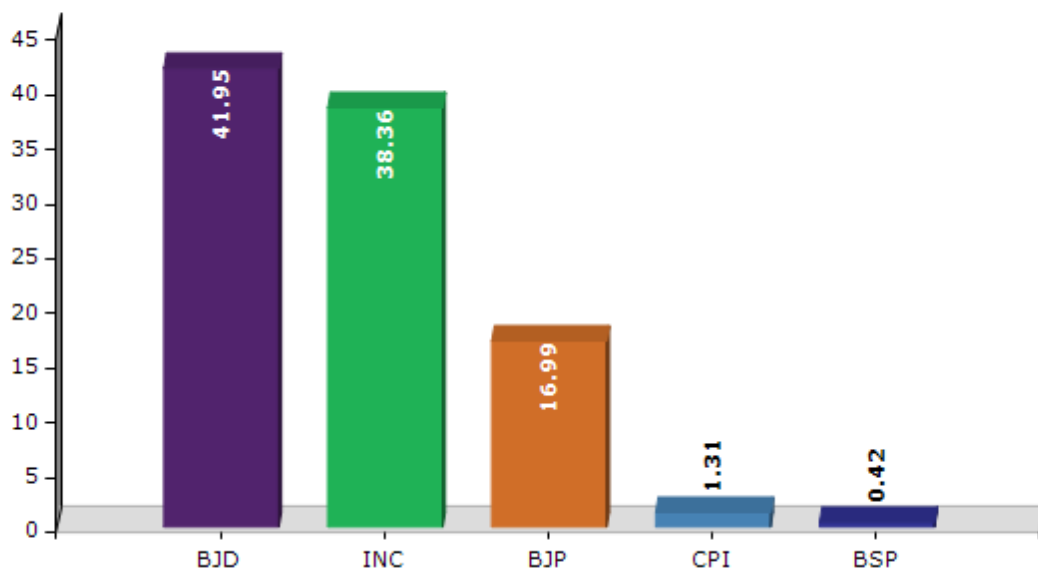


## Historical Summary Election Results

### Summary Result of Assembly Election - 2014

Candidate Name	Party	Votes	Votes %
Parshuram Dhada	BJD	57319	41.95
Mrutyunjay Jena	INC	52408	38.36
Rakesh Kumar Malik	BJP	23217	16.99
Jayakrushna Mallick	CPI	1787	1.31
Ashok Kumar Das	BSP	580	0.42
Aira Kharabela Mahalik	SAMO	505	0.37
	NOTA	812	0.59

Votes Percentage of Top Parties - 2014



## Polling Station Level Election Results

### Number and Name of Polling Stations (PS) (2019 AE)

Number of Polling Stations	Name of Polling Stations	Number of Polling Stations	Name of Polling Stations
1	Singakhunta-1	22	Raghunathapur
2	Singakhunta-2	23	Ruso
3	Singakhunta-3	24	Madhubana-1
4	Singakhunta-4	25	Madhubana-2
5	Singakhunta-5	26	Khunta-1
6	Digibhaanra	27	Khunta-2
7	Digibhaanra	28	Ranpur
8	Gopinathapur	29	Chhatara
9	Joka	30	Chhatara
10	Raipitambar	31	Atapur
11	Kumudini	32	Atapur
12	Gopalpur	33	Jadida
13	Bagudi-1	34	Sarupada
14	Bagudi-2	35	Kudei-1
15	Gobindpur	36	Kudei-2
16	Kesharipur-1	37	Adia
17	Kesharipur-2	38	Wada
18	Manatri-1	39	Champu
19	Manatri-2	40	Balipur
20	Gohirapada	41	Chahalima
21	Angula	42	Rangapati

Contd....

## Polling Station Level Election Results

### Polling Station-wise Votes Secured by Overall Top Five Parties in Soro Assembly in Assembly Election (AE) under Bhadrak Parliamentary Constituency in Odisha (2019)

Number of Polling Station	Winner - Parshu Ram Dhada (BJD)	Runner-up - Rakesh Kumar Malik (BJP)	3rd - Surendra Prasad Pramanik (INC)	4th - Madhabananda Malik (BSP)	5th - Umesh Chandra Sethi (PUJP)	NOTA	Other	Total Votes Secured
36	189	253	145	2	1	2	0	592
37	209	146	174	1	2	2	2	536
38	272	211	275	2	4	1	0	765
39	73	80	331	0	1	3	0	488
40	71	133	92	1	1	1	0	299
41	249	197	242	1	0	2	1	692
42	239	405	158	1	1	1	0	805
43	117	289	193	0	2	3	0	604
44	127	264	223	4	3	1	1	623
45	282	314	255	0	3	2	0	856
46	396	159	299	0	3	1	0	858
47	198	116	301	3	4	1	0	623
48	196	91	104	2	2	0	2	397
49	294	186	389	3	9	3	0	884
50	254	267	283	3	3	5	3	818
51	292	303	292	2	3	2	0	894
52	262	249	405	3	1	2	0	922
53	355	204	188	3	2	4	1	757
54	327	173	151	1	0	1	0	653
55	277	88	138	0	0	1	0	504
56	385	200	71	2	1	4	2	665
57	405	154	110	9	1	1	1	681
58	370	349	117	3	2	2	1	844
59	227	211	205	3	5	2	0	653
60	403	235	66	1	1	0	1	707
61	215	284	136	0	0	0	2	637
62	194	209	45	0	0	0	1	449
63	149	105	147	0	1	1	0	403
64	358	183	60	1	2	2	0	606
65	404	210	159	1	2	0	1	777
66	343	158	91	1	1	0	0	594
67	241	184	72	1	0	1	0	499
68	331	226	305	1	0	0	0	863
69	99	51	214	2	0	1	1	368
70	504	235	187	6	4	3	1	940

Contd....

## Polling Station Level Election Results

**Winner, Runner-up and 3rd Party Position & Winning Margin According to Polling Stations in Soro Assembly in Assembly Election (AE) under Bhadrak Parliamentary Constituency in Odisha (2019)**

Polling Station Number	Winner Party	Winner Votes (%)	Runner-up Party	Runner-up Votes (%)	Winning Margin Votes (%)	Third Party	Third Party Votes (%)	Other Votes (%)
71	BJD	183 (45.52)	INC	176 (43.78)	7 (1.74)	BJP	42 (10.45)	1 (0.25)
72	BJD	274 (44.26)	INC	239 (38.61)	35 (5.65)	BJP	103 (16.64)	3 (0.48)
73	INC	355 (44.54)	BJP	219 (27.48)	136 (17.06)	BJD	212 (26.6)	11 (1.38)
74	BJD	432 (48.11)	INC	305 (33.96)	127 (14.15)	BJP	139 (15.48)	22 (2.45)
75	INC	400 (46.03)	BJP	279 (32.11)	121 (13.92)	BJD	184 (21.17)	6 (0.69)
76	INC	386 (42.7)	BJD	260 (28.76)	126 (13.94)	BJP	253 (27.99)	5 (0.55)
77	INC	307 (36.08)	BJP	303 (35.61)	4 (0.47)	BJD	230 (27.03)	11 (1.29)
78	INC	283 (46.62)	BJD	185 (30.48)	98 (16.14)	BJP	137 (22.57)	2 (0.33)
79	BJP	333 (44.82)	BJD	271 (36.47)	62 (8.35)	INC	130 (17.5)	9 (1.21)
80	BJD	282 (43.99)	BJP	226 (35.26)	56 (8.73)	INC	126 (19.66)	7 (1.09)
81	BJD	281 (42.64)	BJP	247 (37.48)	34 (5.16)	INC	118 (17.91)	13 (1.97)
82	BJP	375 (53.19)	BJD	219 (31.06)	156 (22.13)	INC	104 (14.75)	7 (0.99)
83	BJD	594 (56.79)	INC	424 (40.54)	170 (16.25)	BJP	12 (1.15)	16 (1.53)
84	BJD	533 (57.01)	INC	335 (35.83)	198 (21.18)	BJP	46 (4.92)	21 (2.25)
85	INC	407 (45.02)	BJP	274 (30.31)	133 (14.71)	BJD	217 (24)	6 (0.66)
86	BJP	345 (41.72)	BJD	272 (32.89)	73 (8.83)	INC	188 (22.73)	22 (2.66)
87	INC	329 (42.4)	BJD	297 (38.27)	32 (4.13)	BJP	141 (18.17)	9 (1.16)
88	BJP	351 (35.78)	INC	346 (35.27)	5 (0.51)	BJD	262 (26.71)	22 (2.24)
89	BJP	223 (42.8)	BJD	184 (35.32)	39 (7.48)	INC	109 (20.92)	5 (0.96)
90	BJD	309 (37.64)	BJP	294 (35.81)	15 (1.83)	INC	208 (25.33)	10 (1.22)
91	BJP	437 (50.06)	BJD	328 (37.57)	109 (12.49)	INC	94 (10.77)	14 (1.6)
92	BJD	194 (38.72)	INC	155 (30.94)	39 (7.78)	BJP	148 (29.54)	4 (0.8)
93	INC	338 (40.29)	BJD	268 (31.94)	70 (8.35)	BJP	224 (26.7)	9 (1.07)
94	BJP	369 (38.6)	INC	322 (33.68)	47 (4.92)	BJD	258 (26.99)	7 (0.73)
95	BJD	430 (50.47)	INC	325 (38.15)	105 (12.32)	BJP	83 (9.74)	14 (1.64)
96	INC	317 (41.28)	BJD	248 (32.29)	69 (8.99)	BJP	197 (25.65)	6 (0.78)
97	INC	219 (58.24)	BJD	78 (20.74)	141 (37.5)	BJP	71 (18.88)	8 (2.13)
98	BJP	191 (43.61)	BJD	173 (39.5)	18 (4.11)	INC	70 (15.98)	4 (0.91)
99	BJP	343 (40.69)	BJD	253 (30.01)	90 (10.68)	INC	233 (27.64)	14 (1.66)
100	BJD	346 (42.51)	BJP	283 (34.77)	63 (7.74)	INC	175 (21.5)	10 (1.23)
101	BJP	167 (42.28)	INC	152 (38.48)	15 (3.8)	BJD	71 (17.97)	5 (1.27)
102	INC	319 (39.24)	BJP	290 (35.67)	29 (3.57)	BJD	195 (23.99)	9 (1.11)
103	BJP	496 (51.94)	BJD	290 (30.37)	206 (21.57)	INC	158 (16.54)	11 (1.15)
104	INC	346 (36.58)	BJD	301 (31.82)	45 (4.76)	BJP	279 (29.49)	20 (2.11)
105	BJD	429 (44.09)	BJP	344 (35.35)	85 (8.74)	INC	180 (18.5)	20 (2.06)

Contd....

## Socio-Economic Amenities - Rural

### Access to Education Facilities

Particulars	Number of Villages (% of Population)				
	Available	Not Available	If Not Available (Distance of Nearest Facility)		
			A	B	C
Govt. Primary School	221 (96)	47 (4)	46 (4)	1 (0)	0 (0)
Private Primary School	35 (23)	233 (77)	0 (0)	0 (0)	0 (0)
Govt. Middle School	163 (86)	105 (14)	50 (8)	50 (6)	3 (0)
Private Middle School	31 (23)	237 (77)	0 (0)	0 (0)	0 (0)
Govt. Secondary School	75 (54)	193 (46)	144 (34)	17 (5)	0 (0)
Private Secondary School	20 (17)	248 (83)	23 (4)	4 (1)	0 (0)
Govt. Senior Secondary School	13 (10)	255 (90)	46 (18)	97 (29)	65 (23)
Private Senior Secondary School	4 (3)	264 (97)	21 (8)	14 (6)	12 (6)
Govt. Arts and Science Degree College	11 (8)	257 (92)	37 (15)	123 (42)	31 (8)
Private Arts and Science Degree College	1 (1)	267 (99)	18 (8)	44 (17)	4 (2)
Govt. Engineering College	1 (2)	267 (98)	0 (0)	0 (0)	0 (0)
Private Engineering College	2 (3)	266 (97)	0 (0)	2 (0)	264 (97)
Govt. Medicine College	0 (0)	268 (100)	0 (0)	0 (0)	268 (100)
Private Medicine College	0 (0)	268 (100)	0 (0)	0 (0)	0 (0)
Govt. Management Institute	0 (0)	268 (100)	0 (0)	0 (0)	0 (0)
Private Management Institute	0 (0)	268 (100)	0 (0)	0 (0)	268 (100)
Govt. Polytechnic	0 (0)	268 (100)	0 (0)	3 (2)	85 (33)
Private Polytechnic	0 (0)	268 (100)	1 (0)	1 (0)	151 (57)
Govt. Vocational Training School/ITI	0 (0)	268 (100)	4 (2)	13 (5)	60 (24)
Private Vocational Training School/ITI	0 (0)	268 (100)	11 (3)	74 (24)	100 (42)
Govt. Non Formal Training Centre	1 (2)	267 (98)	0 (0)	12 (3)	99 (35)
Private Non Formal Training Centre	0 (0)	268 (100)	0 (0)	0 (0)	80 (34)
Govt. School For Disabled	0 (0)	268 (100)	0 (0)	2 (0)	155 (52)
Private School For Disabled	0 (0)	268 (100)	0 (0)	0 (0)	78 (34)
Government Others	0 (0)	268 (100)	2 (1)	13 (4)	13 (6)
Private Others	4 (2)	264 (98)	1 (0)	17 (4)	39 (14)

Note : Distance A : Less than 5 km; B : Between 5-10 km; C : 10+ km.; Source : Data Analysis is based on 2011 Census.

## DISCLAIMER

The Terms of Use and Disclaimer of Datanet India Private Limited (hereinafter referred to as "Datanet") for use of this analysis report of **Soro Assembly Constituency (Soro Vidhan Sabha)** :-

1. **Assembly Factbook™** is a Registered Trade Mark owned by Datanet.
2. All the maps are sketched and graphical representation only and have not been drawn to the scale and also not to represent the actual geographical area or boundary of the unit.
3. The data for the aforesaid analysis is based on authentic sources and has been culled from the various publications of Census, CSO and NSSO for district and block level data, various central and state government departments, Central & State Elections Commissions and the concerned Returning Officers' releases, Electoral Rolls, Election results and allied publications, internal assessment, surveys, estimates and analysis. Therefore, certain adjustment of data at micro level may have been done to arrive closer to the macro data.
4. Data have been provided on an "As Is" and "As AVAILABLE" basis
5. The colours shown in the maps or diagram and charts of a particular party, alliance or AC are indicative and do not represent them.
6. This publication which includes maps, sheets, graphs and data would be the property under copyright of Datanet only. The user may use these for its internal study, analysis and research purposes. It's public display, re-selling or any commercial uses by the user are not allowed.
7. Datanet has taken due care and caution in compilation and processing of data and allied information, but does not guarantee the accuracy, adequacy or completeness of any information/analysis and will be not responsible for any errors or omissions or for the results obtained from the use of such information/analysis.
8. All the contents for the publication have been culled from various authentic sources and Datanet reasonably believes such sources to be reliable, but does not make any representations, express or implied as to the accuracy or fitness of use of such information. The information or contents of the information/analysis do not constitute advice and should not be relied upon in making (or refraining from making) any decision. Any reliance placed upon the information provided by Datanet is the sole responsibility and strictly at the user's risk.
9. In no event will Datanet be liable for any damages (including, without limitation, damages for loss of business projects, or loss of profits) arising in contract, tort or otherwise from the use of or inability to use any of its contents, or from any action taken (or refrained from being taken) as a result of using the analysis or any of its contents. Datanet its directors, owners, editors, officials, employees, distributor and agents or any associate will not be liable for any errors in the information contained or any consequences arising from the use of the contents of the provided information/analysis.
10. If any provision of these terms and conditions is held invalid or illegal or unenforceable for any reason by any court of competent jurisdiction, such provision shall be severed and the remainder of provisions of the terms and conditions shall continue in full force and effect as if the Term of Use had been executed with the invalid, illegal or unenforceable provision eliminated.
11. If there are any discrepancies in the information provided, please bring it to attention of Datanet for suitable rectification measures.



**Buy Online This Complete Book At**  
**Datanet India eBooks Store**

[www.indiastatpublications.com](http://www.indiastatpublications.com)

or go directly at

[http://www.indiastatpublications.com/  
Assembly\\_factbook/Odisha/Bhadrak/Soro](http://www.indiastatpublications.com/Assembly_factbook/Odisha/Bhadrak/Soro)

 **india**stat**elections**

ISBN: 978-93-5301-016-7



9 789353 019167