



Odisha

# Assembly Factbook™

Birmaharajpur Assembly Constituency

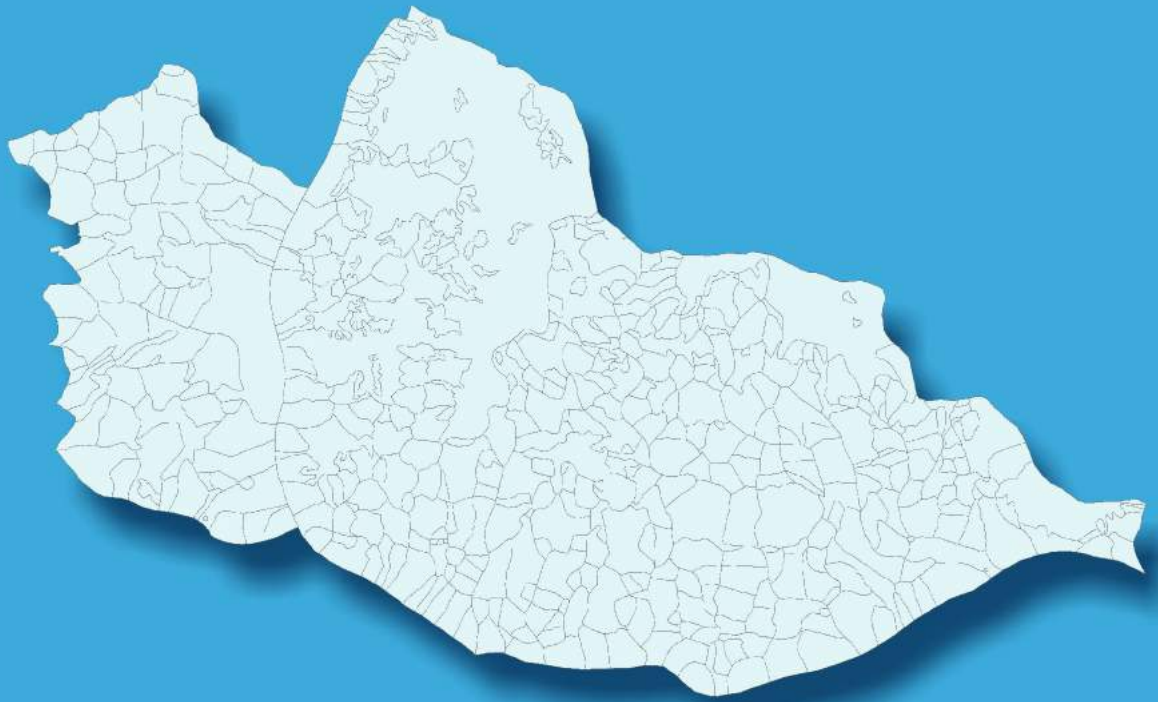


Key Electoral Data of Birmaharajpur  
Assembly Constituency (Vidhan Sabha)

Odisha

# Assembly Factbook™

Birmaharajpur Assembly Constituency



Birmaharajpur Vidhan Sabha

## **Editor & Director**

Dr. R.K. Thukral

## **Research Editor**

Dr. Shafeeq Rahman

## **Compiled, Researched and Published by Datanet India Pvt. Ltd.**

D-100, 1st Floor,

Okhla Industrial Area, Phase-I,  
New Delhi- 110020.

Ph.: 91-11- 43580781-84

Email : support@indiastatpublications.com

Website : www.indiastatelections.com

## **Online Book Store :**

www.indiastatpublications.com

**Report No. :** AFB/OD-064-0123

**ISBN :** 978-93-5301-886-3

**First Edition :** January, 2018

**Sixth Updated Edition :** January, 2023

**Price :** Rs. 11500/-

US\$ 310

© **Datanet India Pvt. Ltd.**

All rights reserved. No part of this book may be reproduced, stored in a retrieval system or transmitted in any form or by any means, mechanical photocopying, photographing, scanning, recording or otherwise without the prior written permission of the publisher. Please refer to Disclaimer at page no. 244 for the use of this publication.

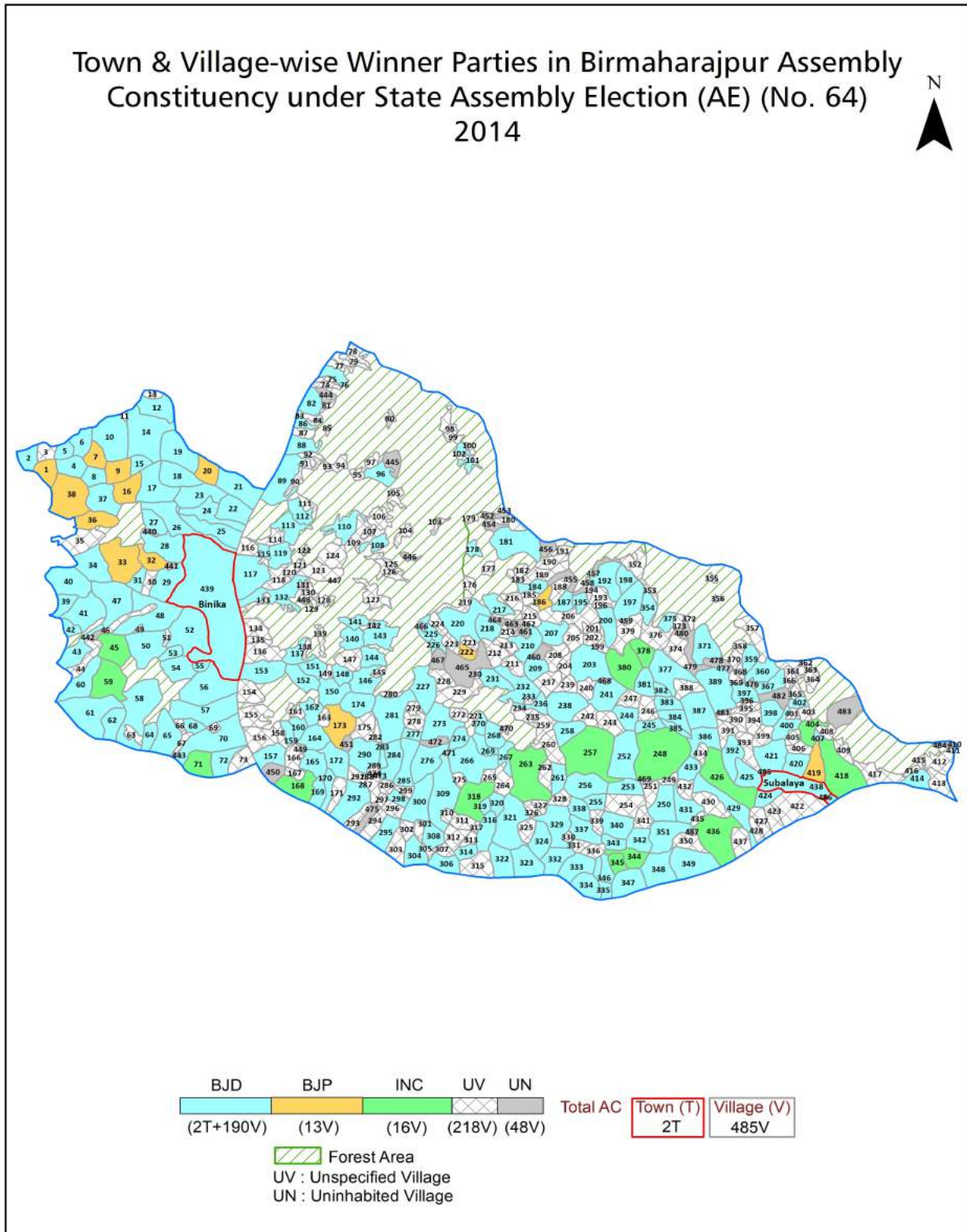
Printed in India

# Contents

No.	Particulars	Page No.
	<b>Introduction</b>	
1	Assembly Constituency - (Vidhan Sabha) at a Glance   Features of Assembly as per Delimitation Commission of India (2008)	1-2
	<b>Location and Political Maps</b>	
2	Location Map   Boundaries of Assembly Constituency - (Vidhan Sabha) in District   Boundaries of Assembly Constituency under Parliamentary Constituency - (Lok Sabha)   Town & Village-wise Winner Parties- 2019-PE, 2019-AE, 2014-PE, 2014-AE, 2009-PE and 2009-AE	3-11
	<b>Administrative Setup (2011)</b>	
3	District   Sub-district   Towns   Villages   Inhabited Villages   Uninhabited Villages   Village Panchayat   Intermediate Panchayat	12-34
	<b>Demographics (2011)</b>	
4	Population   Households   Rural/Urban Population   Towns and Villages by Population Size   Sex Ratio (Total & 0-6 Years)   Religious Population   Social Population   Literacy Rate	35-36
	<b>Electoral Features</b>	
5	Important Dates of Last Elections Held   Electors by Gender   Service Electors   Voters   Voters Turnout   Polling Stations & Average Number of Electors per Polling Station   Electors by Age Group   Present Elected Representatives	37-42
	<b>Historical Summary Election Results</b>	
6	Vote Share of Major Parties   Winning Margin (Number & Percentage)   Polarity of Parties   Summary Result of Assembly Segment of Parliamentary Elections 2019, 2014, 2009, 2004 and 1999   Summary Result of Assembly Elections 2019, 2014, 2009, 2004, 2000, 1995, 1990, 1985, 1980, 1977 and 1974	43-63
	<b>Polling Station Level Election Results</b>	
7	Name and Number of Polling Station 2019-PE, 2019-AE, 2014-PE, 2014-AE, 2009-PE and 2009-AE   Polling Station-wise Electors, Voters & Voters Turnout 2019-PE, 2019-AE, 2014-PE, 2014-AE, 2009-PE and 2009-AE   Polling Station wise Elections Results 2019-PE, 2019-AE, 2014-PE, 2014-AE, 2009-PE and 2009-AE	64-223
	<b>Share of Assembly Constituency</b>	
8	Share of Assembly Constituency - (Vidhan Sabha) in State, District and Parliamentary Constituency - (Lok Sabha)	224
	<b>Socio-Economic Amenities (2011)</b>	
9	Access to Administrative Units   Agricultural, Manufacturing and Industrial Commodities   Demographic Indicators   Education   Health & Manpower   Drinking Water Supply   Sanitation   Entertainment and Recreations Infrastructure   Power   Food Allocation Distribution and Marketing of Agriculture Commodities Infrastructure   Transport and Road Infrastructure   Communication   Banking and Financial Services   Land Use   Irrigation Source	226-240
10	<b>Abbreviation &amp; Sources</b>	241-242
11	<b>Disclaimer</b>	244



Location & Political Map



## Administrative Setup

### List of Village Panchayat & Intermediate Panchayat (Block) Name - 2011

Village Name	Village Panchayat Name	Intermediate Panchayat Name
Achandbaghartaila	Kenjhariapalli	Biramaharajpur
Adal	Khandahata	Biramaharajpur
Ainlachhat	Chadeipanka	Ulunda
Ainlamunda	Babupalli	Binika
Akhidadar	Bankigiridi	Binika
Amarpali	Bahalpadar	Biramaharajpur
Amatpali	Kenjhariapalli	Biramaharajpur
Amsarbhata	Kamira	Biramaharajpur
AmulyamaniRanipur	Hilunga	Biramaharajpur
Amurda	Panchamahala	Ulunda
Anandapur	Jatesingha	Biramaharajpur
Anantapali	Ulunda	Ulunda
Antarda	Bhandar	Binika
ApatNuagarh	Mahada	Ulunda
Arigaon	Bankigiridi	Binika
Asurgarh	Singhjuba	Binika
Babupali	Babupalli	Binika
Babupali	Kalapathar	Ulunda
Bad Khamar	Jatesingha	Biramaharajpur
Badali	Ulunda	Ulunda
Badankaria	Jaloi	Ulunda
Badhila	Bisipada	Ulunda
Badkirasira	Khandahata	Biramaharajpur
Badkirasirijungle	Khandahata	Biramaharajpur
Badmal	Chadeipanka	Ulunda
Badmal	Panchamahala	Ulunda
Badmal	Bahalpadar	Biramaharajpur
Badmal jungle	Bahalpadar	Biramaharajpur
Badmaljungle	Chadeipanka	Ulunda

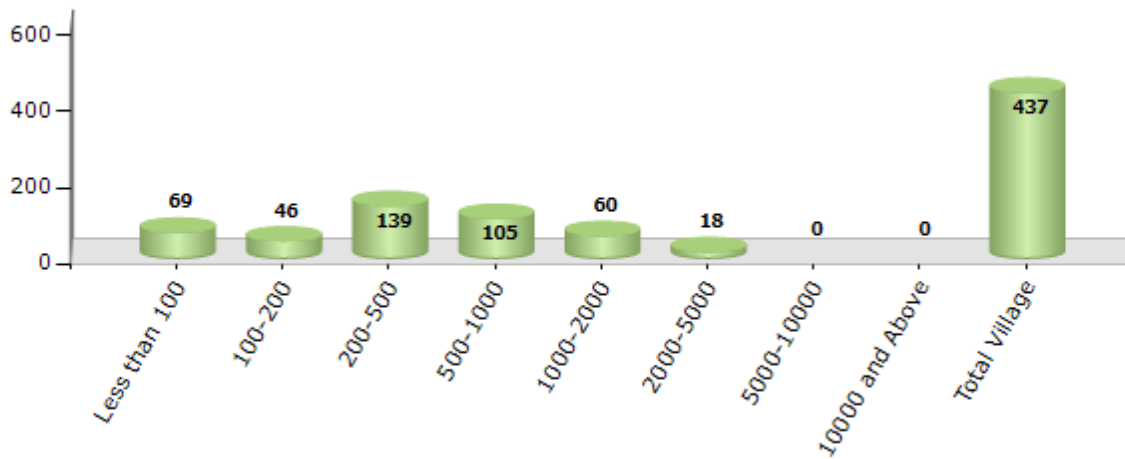
Contd....

Demographic

Number of Villages by Population Size - 2011

Less than 100	100-200	200-500	500-1000	1000-2000	2000-5000	5000-10000	10000 and Above	Total Village
69	46	139	105	60	18	0	0	437

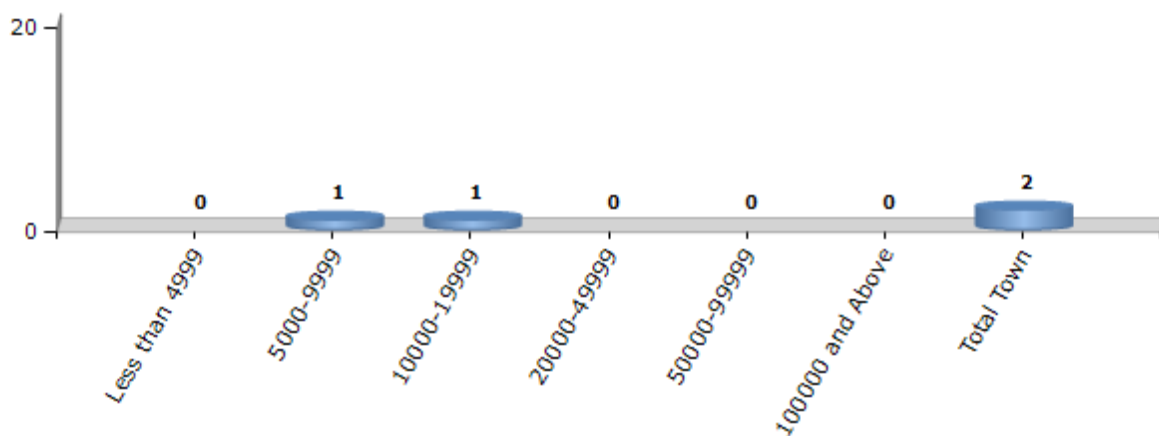
Number of Villages by Population Size - 2011



Number of Towns by Population Size - 2011

Less than 4999	5000-9999	10000-19999	20000-49999	50000-99999	100000 and Above	Total Town
0	1	1	0	0	0	2

Number of Towns by Population Size - 2011

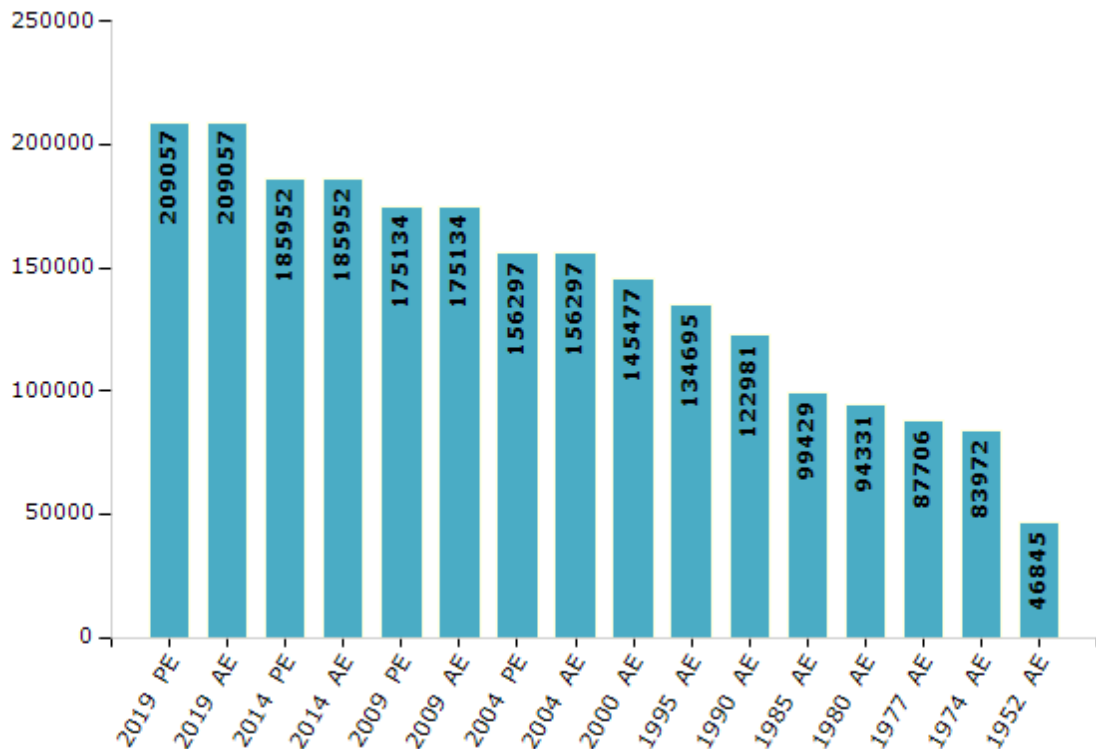


## Electoral Features

### Electors by Male & Female

Year	Male	Female	Others	Total	Year	Male	Female	Others	Total
2019 PE	109286	99770	1	209057	1990 AE	64705	58276	-	122981
2019 AE	109286	99770	1	209057	1985 AE	52010	47419	-	99429
2014 PE	99063	86889	0	185952	1980 AE	48954	45377	-	94331
2014 AE	99063	86889	0	185952	1977 AE	44755	42951	-	87706
2009 PE	92903	82231	-	175134	1974 AE	42325	41647	-	83972
2009 AE	92903	82231	-	175134	1971 AE	-	-	-	-
2004 PE	81711	74586	-	156297	1967 AE	-	-	-	-
2004 AE	81711	74586	-	156297	1961 AE	-	-	-	-
2000 AE	75752	69725	-	145477	1957 AE	-	-	-	-
1999 PE	-	-	-	-	1952 AE	-	-	-	46845
1995 AE	70171	64524	-	134695					

Number of Electors



Note : AE : Assembly Election, PE : Assembly Segment of Parliamentary Election

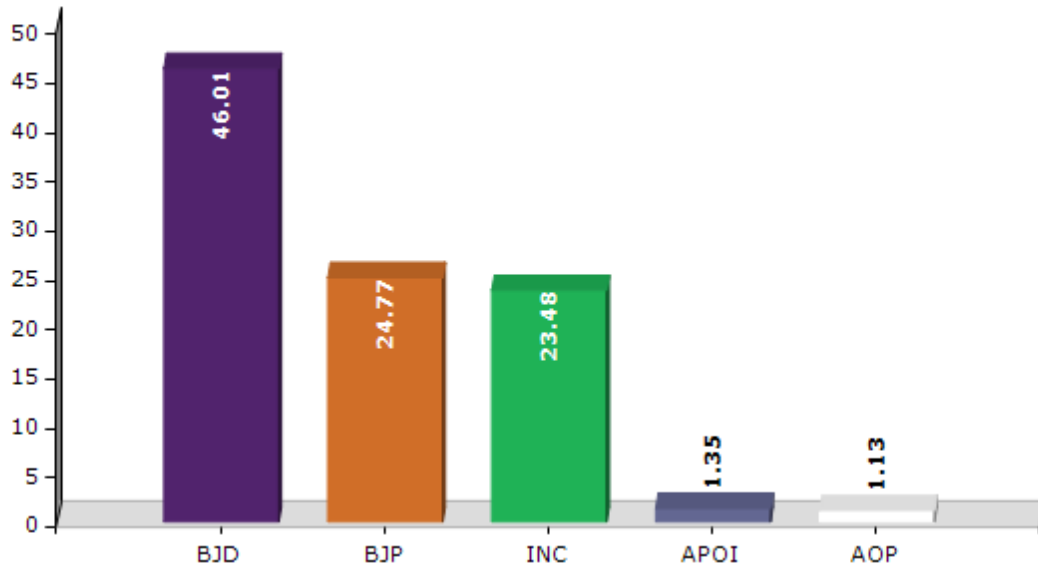


## Historical Summary Election Results

### Summary Result of Assembly Election - 2014

Candidate Name	Party	Votes	Votes %
Padmanabha Behera	BJD	67774	46.01
Ananda Barik	BJP	36484	24.77
Kartik Prasad Taria	INC	34589	23.48
Jyotirmoya Nag	APOI	1992	1.35
Bholanath Sagar	AOP	1669	1.13
Sadanand Mahanand	BSP	1527	1.04
Ashraya Mahananda	IND	1069	0.73
	NOTA	2201	1.49

Votes Percentage of Top Parties - 2014



**Polling Station Level Election Results**

**Number and Name of Polling Stations (PS) (2019 AE)**

<b>Number of Polling Stations</b>	<b>Name of Polling Stations</b>	<b>Number of Polling Stations</b>	<b>Name of Polling Stations</b>
1	Ainlamunda	22	Cherupali
2	Bhabanipali	23	Balaranga
3	Asuragad	24	Sarguna
4	Talamunda	25	Jamapali
5	Bagadia	26	Singhijuba
6	Palasapali	27	Kamira
7	Khairamal	28	Kamira-1
8	Dendupadar	29	Papi
9	Kukudajhuli	30	Jharakadalipali
10	Babupali	31	Chulimal
11	Babupali-1	32	Bhandar 1
12	Hutuma	33	Bhandar -2
13	Bankighirdi	34	Gulunda
14	Bankighirdi	35	Piteipali
15	Sarangapali	36	Mahulapali
16	Akhidadar	37	Kadalipali
17	Arigan	38	Antarda
18	Manigan	39	Dabhala
19	Sindurapur	40	Binka -1
20	Ganeshapur	41	Binka -1
21	Bisalapali	42	Gulapada

Contd....

Polling Station Level Election Results

Polling Station-wise Votes Secured by Overall Top Five Parties in Birmaharajpur Assembly in Assembly Election (AE) under Bolangir Parliamentary Constituency in Odisha (2019)

Number of Polling Station	Winner - Padmanabha Behera (BJD)	Runner-up - Raghunath Jagadala (BJP)	3rd - Binod Patra (INC)	4th - Ananda Barik (IND)	5th - Brajendra Luha (BSP)	NOTA	Other	Total Votes Secured
36	132	316	64	8	16	3	16	555
37	77	102	139	2	2	1	4	327
38	296	312	73	1	6	5	8	701
39	278	413	115	2	45	6	15	874
40	293	331	149	2	2	12	10	799
41	81	181	55	1	1	3	0	322
42	231	426	24	4	4	1	10	700
43	154	474	186	3	9	9	19	854
44	265	331	162	3	3	2	7	773
45	323	473	97	5	8	3	11	920
46	121	300	171	2	3	9	15	621
47	241	440	80	5	2	2	5	775
48	289	443	92	2	4	5	10	845
49	201	319	28	2	1	6	6	563
50	184	293	172	3	5	2	7	666
51	181	454	51	1	4	12	12	715
52	241	185	190	2	39	5	13	675
53	178	167	125	8	29	3	9	519
54	174	343	77	2	0	2	8	606
55	199	228	51	12	2	0	7	499
56	190	209	156	4	9	2	6	576
57	110	155	51	4	0	3	4	327
58	286	450	40	9	4	6	9	804
59	181	431	222	23	18	7	23	905
60	378	239	83	4	1	9	6	720
61	169	195	185	12	8	4	2	575
62	222	270	122	5	8	3	16	646
63	177	265	74	4	3	3	9	535
64	236	348	128	16	7	2	21	758
65	363	399	70	11	6	4	16	869
66	191	191	59	7	3	2	1	454
67	119	226	57	7	1	5	7	422
68	260	292	16	1	2	3	4	578
69	247	257	74	2	1	1	7	589
70	182	236	327	17	12	5	12	791

Contd....

## Polling Station Level Election Results

### Winner, Runner-up and 3rd Party Position & Winning Margin According to Polling Stations in Birmaharajpur Assembly in Assembly Election (AE) under Bolangir Parliamentary Constituency in Odisha (2019)

Polling Station Number	Winner Party	Winner Votes (%)	Runner-up Party	Runner-up Votes (%)	Winning Margin Votes (%)	Third Party	Third Party Votes (%)	Other Votes (%)
71	BJP	163 (56.79)	INC	68 (23.69)	95 (33.1)	BJD	46 (16.03)	10 (3.48)
72	BJP	206 (41.2)	BJD	155 (31)	51 (10.2)	INC	113 (22.6)	26 (5.2)
73	INC	269 (35.77)	BJP	258 (34.31)	11 (1.46)	BJD	196 (26.06)	29 (3.86)
74	INC	342 (40.86)	BJP	329 (39.31)	13 (1.55)	BJD	130 (15.53)	36 (4.3)
75	BJP	293 (40.25)	BJD	197 (27.06)	96 (13.19)	INC	188 (25.82)	50 (6.87)
76	INC	187 (38.09)	BJP	140 (28.51)	47 (9.58)	BJD	139 (28.31)	25 (5.09)
77	BJP	370 (37.19)	BJD	310 (31.16)	60 (6.03)	INC	276 (27.74)	39 (3.92)
78	INC	220 (38.33)	BJD	166 (28.92)	54 (9.41)	BJP	142 (24.74)	46 (8.01)
79	BJP	331 (41.32)	BJD	219 (27.34)	112 (13.98)	INC	217 (27.09)	34 (4.24)
80	BJD	159 (53.72)	INC	107 (36.15)	52 (17.57)	BJP	19 (6.42)	11 (3.72)
81	BJP	368 (56.53)	BJD	134 (20.58)	234 (35.95)	INC	127 (19.51)	22 (3.38)
82	INC	210 (43.21)	BJP	173 (35.6)	37 (7.61)	BJD	74 (15.23)	29 (5.97)
83	INC	398 (44.72)	BJD	219 (24.61)	179 (20.11)	BJP	175 (19.66)	98 (11.01)
84	BJP	378 (41.36)	BJD	250 (27.35)	128 (14.01)	INC	162 (17.72)	124 (13.57)
85	INC	415 (69.75)	BJP	120 (20.17)	295 (49.58)	BJD	46 (7.73)	14 (2.35)
86	INC	241 (36.68)	BJP	238 (36.23)	3 (0.45)	BJD	155 (23.59)	23 (3.5)
87	BJD	207 (37.16)	INC	182 (32.68)	25 (4.48)	BJP	130 (23.34)	38 (6.82)
88	INC	158 (50.97)	BJD	84 (27.1)	74 (23.87)	BJP	39 (12.58)	29 (9.35)
89	INC	279 (48.27)	BJD	192 (33.22)	87 (15.05)	BJP	93 (16.09)	14 (2.42)
90	INC	321 (55.54)	BJD	157 (27.16)	164 (28.38)	BJP	70 (12.11)	30 (5.19)
91	BJD	184 (51.25)	INC	122 (33.98)	62 (17.27)	BJP	35 (9.75)	18 (5.01)
92	BJD	304 (53.24)	INC	175 (30.65)	129 (22.59)	BJP	62 (10.86)	30 (5.25)
93	BJD	332 (55.61)	INC	145 (24.29)	187 (31.32)	BJP	109 (18.26)	11 (1.84)
94	BJD	456 (42.5)	INC	342 (31.87)	114 (10.63)	BJP	216 (20.13)	59 (5.5)
95	BJD	273 (70.54)	INC	60 (15.5)	213 (55.04)	BJP	34 (8.79)	20 (5.17)
96	BJD	482 (48.54)	BJP	244 (24.57)	238 (23.97)	INC	229 (23.06)	38 (3.83)
97	BJD	249 (43.68)	BJP	156 (27.37)	93 (16.31)	INC	137 (24.04)	28 (4.91)
98	BJD	216 (46.65)	INC	120 (25.92)	96 (20.73)	BJP	102 (22.03)	25 (5.4)
99	BJP	400 (45.92)	BJD	293 (33.64)	107 (12.28)	INC	126 (14.47)	52 (5.97)
100	BJD	202 (38.85)	BJP	161 (30.96)	41 (7.89)	INC	100 (19.23)	57 (10.96)
101	BJD	560 (56.39)	BJP	293 (29.51)	267 (26.88)	INC	80 (8.06)	60 (6.04)
102	BJD	432 (46.91)	BJP	252 (27.36)	180 (19.55)	INC	212 (23.02)	25 (2.71)
103	BJD	410 (60.12)	INC	161 (23.61)	249 (36.51)	BJP	76 (11.14)	35 (5.13)
104	BJD	255 (41.4)	INC	210 (34.09)	45 (7.31)	BJP	120 (19.48)	31 (5.03)
105	INC	207 (34.33)	BJD	186 (30.85)	21 (3.48)	BJP	186 (30.85)	24 (3.98)

Contd....

**Socio-Economic Amenities - Rural**

**Access to Education Facilities**

Particulars	Number of Villages (% of Population)				
	Available	Not Available	If Not Available (Distance of Nearest Facility)		
			A	B	C
Govt. Primary School	366 (98)	71 (2)	63 (2)	6 (0)	1 (0)
Private Primary School	16 (8)	421 (92)	0 (0)	0 (0)	0 (0)
Govt. Middle School	160 (65)	277 (35)	81 (11)	170 (20)	25 (4)
Private Middle School	14 (8)	423 (92)	0 (0)	0 (0)	0 (0)
Govt. Secondary School	43 (25)	394 (75)	159 (37)	166 (27)	0 (0)
Private Secondary School	10 (6)	427 (94)	26 (4)	36 (4)	0 (0)
Govt. Senior Secondary School	7 (5)	430 (95)	21 (7)	58 (14)	138 (24)
Private Senior Secondary School	3 (1)	434 (99)	43 (13)	97 (22)	70 (14)
Govt. Arts and Science Degree College	1 (1)	436 (99)	33 (11)	99 (28)	148 (32)
Private Arts and Science Degree College	1 (1)	436 (99)	4 (1)	57 (12)	94 (14)
Govt. Engineering College	0 (0)	437 (100)	0 (0)	0 (0)	0 (0)
Private Engineering College	0 (0)	437 (100)	1 (1)	0 (0)	436 (99)
Govt. Medicine College	0 (0)	437 (100)	0 (0)	0 (0)	437 (100)
Private Medicine College	0 (0)	437 (100)	0 (0)	0 (0)	0 (0)
Govt. Management Institute	0 (0)	437 (100)	0 (0)	2 (1)	386 (79)
Private Management Institute	1 (1)	436 (99)	0 (0)	1 (0)	47 (19)
Govt. Polytechnic	0 (0)	437 (100)	0 (0)	1 (0)	65 (12)
Private Polytechnic	0 (0)	437 (100)	0 (0)	3 (1)	109 (18)
Govt. Vocational Training School/ITI	1 (0)	436 (100)	0 (0)	1 (0)	128 (22)
Private Vocational Training School/ITI	0 (0)	437 (100)	0 (0)	3 (1)	57 (12)
Govt. Non Formal Training Centre	0 (0)	437 (100)	0 (0)	1 (0)	85 (16)
Private Non Formal Training Centre	0 (0)	437 (100)	0 (0)	3 (1)	87 (14)
Govt. School For Disabled	0 (0)	437 (100)	0 (0)	1 (0)	70 (13)
Private School For Disabled	0 (0)	437 (100)	0 (0)	5 (1)	102 (17)
Government Others	0 (0)	437 (100)	0 (0)	0 (0)	48 (8)
Private Others	0 (0)	437 (100)	0 (0)	0 (0)	42 (7)

Note : Distance A : Less than 5 km; B : Between 5-10 km; C : 10+ km.; Source : Data Analysis is based on 2011 Census.

## DISCLAIMER

The Terms of Use and Disclaimer of Datanet India Private Limited (hereinafter referred to as "Datanet") for use of this analysis report of **Birmaharajpur Assembly Constituency (Birmaharajpur Vidhan Sabha)** :-

1. **Assembly Factbook™** is a Registered Trade Mark owned by Datanet.
2. All the maps are sketched and graphical representation only and have not been drawn to the scale and also not to represent the actual geographical area or boundary of the unit.
3. The data for the aforesaid analysis is based on authentic sources and has been culled from the various publications of Census, CSO and NSSO for district and block level data, various central and state government departments, Central & State Elections Commissions and the concerned Returning Officers' releases, Electoral Rolls, Election results and allied publications, internal assessment, surveys, estimates and analysis. Therefore, certain adjustment of data at micro level may have been done to arrive closer to the macro data.
4. Data have been provided on an "As Is" and "As AVAILABLE" basis
5. The colours shown in the maps or diagram and charts of a particular party, alliance or AC are indicative and do not represent them.
6. This publication which includes maps, sheets, graphs and data would be the property under copyright of Datanet only. The user may use these for its internal study, analysis and research purposes. It's public display, re-selling or any commercial uses by the user are not allowed.
7. Datanet has taken due care and caution in compilation and processing of data and allied information, but does not guarantee the accuracy, adequacy or completeness of any information/analysis and will be not responsible for any errors or omissions or for the results obtained from the use of such information/analysis.
8. All the contents for the publication have been culled from various authentic sources and Datanet reasonably believes such sources to be reliable, but does not make any representations, express or implied as to the accuracy or fitness of use of such information. The information or contents of the information/analysis do not constitute advice and should not be relied upon in making (or refraining from making) any decision. Any reliance placed upon the information provided by Datanet is the sole responsibility and strictly at the user's risk.
9. In no event will Datanet be liable for any damages (including, without limitation, damages for loss of business projects, or loss of profits) arising in contract, tort or otherwise from the use of or inability to use any of its contents, or from any action taken (or refrained from being taken) as a result of using the analysis or any of its contents. Datanet its directors, owners, editors, officials, employees, distributor and agents or any associate will not be liable for any errors in the information contained or any consequences arising from the use of the contents of the provided information/analysis.
10. If any provision of these terms and conditions is held invalid or illegal or unenforceable for any reason by any court of competent jurisdiction, such provision shall be severed and the remainder of provisions of the terms and conditions shall continue in full force and effect as if the Term of Use had been executed with the invalid, illegal or unenforceable provision eliminated.
11. If there are any discrepancies in the information provided, please bring it to attention of Datanet for suitable rectification measures.



**Buy Online This Complete Book At  
Datanet India eBooks Store**

[www.indiastatpublications.com](http://www.indiastatpublications.com)

or go directly at

[http://www.indiastatpublications.com/  
Assembly\\_factbook/Odisha/Bolangir/ Birmaharajpur](http://www.indiastatpublications.com/Assembly_factbook/Odisha/Bolangir/Birmaharajpur)

 **india**stat**elections**

ISBN : 978-93-5301-886-3

