



Odisha

Assembly Factbook™

Athagarh Assembly Constituency



Key Electoral Data of Athagarh
Assembly Constituency (Vidhan Sabha)

Odisha

Assembly Factbook™

Athagarh Assembly Constituency



Athagarh Vidhan Sabha

Editor & Director

Dr. R.K. Thukral

Research Editor

Dr. Shafeeq Rahman

Compiled, Researched and Published by Datanet India Pvt. Ltd.

D-100, 1st Floor,

Okhla Industrial Area, Phase-I,
New Delhi- 110020.

Ph.: 91-11- 43580781-84

Email : support@indiastatpublications.com

Website : www.indiastatelections.com

Online Book Store :

www.indiastatpublications.com

Report No. : AFB/OD-089-0125

ISBN : 978-93-5301-869-6

First Edition : January, 2018

Eighth Updated Edition : January, 2025

Price : Rs. 11500/-

US\$ 310

© **Datanet India Pvt. Ltd.**

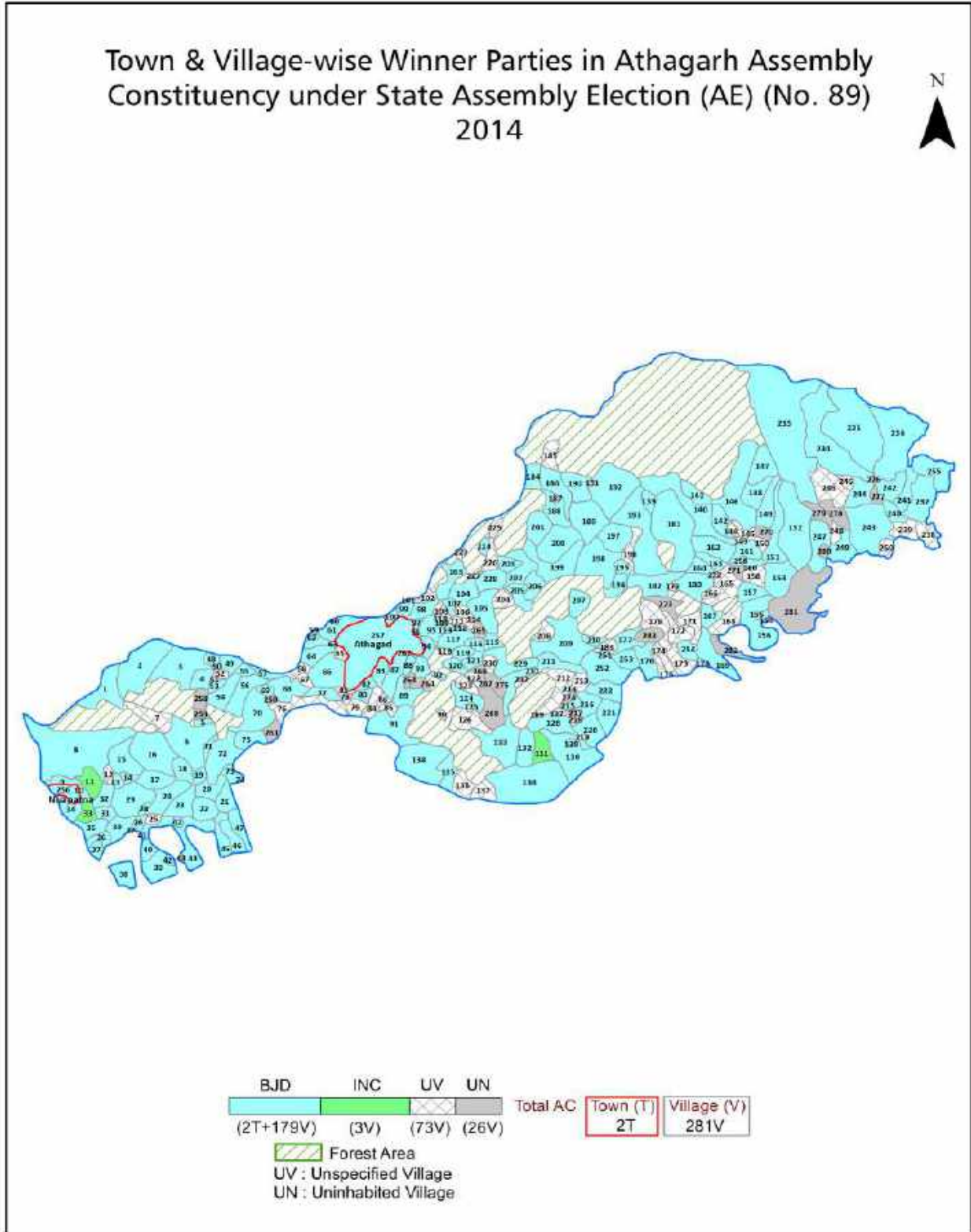
All rights reserved. No part of this book may be reproduced, stored in a retrieval system or transmitted in any form or by any means, mechanical photocopying, photographing, scanning, recording or otherwise without the prior written permission of the publisher. Please refer to Disclaimer at page no. 233 for the use of this publication.

Printed in India

Contents

No.	Particulars	Page No.
	Introduction	
1	Assembly Constituency - (Vidhan Sabha) at a Glance Features of Assembly as per Delimitation Commission of India (2008)	1-2
	Location and Political Maps	
2	Location Map Boundaries of Assembly Constituency - (Vidhan Sabha in District Boundaries of Assembly Constituency under Parliamentary Constituency - (Lok Sabha) Town & Village-wise Winner Parties- 2024-PE, 2024-AE, 2019-PE, 2019-AE, 2014-PE, 2014-AE, 2009-PE and 2009-AE	3-11
	Administrative Setup (2011)	
3	District Sub-district Towns Villages Inhabited Villages Uninhabited Villages Village Panchayat Intermediate Panchayat	12-25
	Demographics (2011)	
4	Population Households Rural/Urban Population Towns and Villages by Population Size Sex Ratio (Total & 0-6 Years) Religious Population Social Population Literacy Rate	26-27
	Electoral Features	
5	Important Dates of Last Elections Held Electors by Gender Service Electors Voters Voters Turnout Polling Stations & Average Number of Electors per Polling Station Electors by Age Group Present Elected Representatives	28-33
	Historical Summary Election Results	
6	Vote Share of Major Parties Winning Margin (Number & Percentage Polarity of Parties Summary Result of Assembly Segment of Parliamentary Elections 2024, 2019, 2014, 2009, 2004 and 1999 Summary Result of Assembly Elections 2024, 2019, 2014, 2009, 2004, 2000, 1995, 1990, 1985, 1980, 1977, 1974, 1971, 1967, 1961, 1957 and 1952	34-58
	Polling Station Level Election Results	
7	Name and Number of Polling Station 2024-PE, 2024-AE, 2019-PE, 2019-AE, 2014-PE, 2014-AE, 2009-PE and 2009-AE Polling Station-wise Electors, Voters & Voters Turnout 2024-PE, 2024-AE, 2019-PE, 2019-AE, 2014-PE, 2014-AE, 2009-PE and 2009-AE Polling Station wise Elections Results 2024-PE, 2024-AE, 2019-PE, 2019-AE, 2014-PE, 2014-AE, 2009-PE and 2009-AE	59-212
	Share of Assembly Constituency	
8	Share of Assembly Constituency - (Vidhan Sabha) in State, District and Parliamentary Constituency - (Lok Sabha)	213
	Socio-Economic Amenities (2011)	
9	Access to Administrative Units Agricultural, Manufacturing and Industrial Commodities Demographic Indicators Education Health & Manpower Drinking Water Supply Sanitation Entertainment and Recreations Infrastructure Power Food Allocation Distribution and Marketing of Agriculture Commodities Infrastructure Transport and Road Infrastructure Communication Banking and Financial Services Land Use Irrigation Source	215-229
10	Abbreviation & Sources	230-231
11	Disclaimer	233

Location & Political Map



Administrative Setup

List of Village Panchayat & Intermediate Panchayat (Block) Name - 2011

Village Name	Village Panchayat Name	Intermediate Panchayat Name
Achalkote	Achalkota	Tigiria
Ambilijhari	Sankarpur	Tangi choudwar
Amrutamonahipatana	Samsarpur	Athagad
Anantapur	Dhurusia	Athagad
Ankula	Samsarpur	Athagad
Arakhapatana	Ichhapur	Athagad
Badabhuibahrbila	Panchagan	Tigiria
Badabhuindal	Badabhuin	Athagad
Badabhuindesh	Badabhuin	Athagad
Badanauput	Badanauput	Tigiria
Badapadagaon	Badasamantarapur	Tangi choudwar
Badasantarapur	Badasamantarapur	Tangi choudwar
Bagadhara	Mangarajpur	Tangi choudwar
Baghera	Megha	Athagad
Baghua	Chhagaon	Athagad
Bailo	Tarading	Athagad
Balarampur	Katakiasahi	Athagad
Bali	Oranda	Athagad
Balipada	Bentapada	Athagad
Balipur	Kumarpur	Athagad
Baliput	Bindhanima	Tigiria
Balisasan	Oranda	Athagad
Bamanapur	Mancheswar	Athagad
Banakhandi	Rajnagar	Athagad
Banamalipur	Jemadeipur	Tigiria
Bandhahata	Katakiasahi	Athagad
Baneswarpada	Bindhanima	Tigiria
Banto	Sankarpur	Tangi choudwar
Basudevpur	Jemadeipur	Tigiria

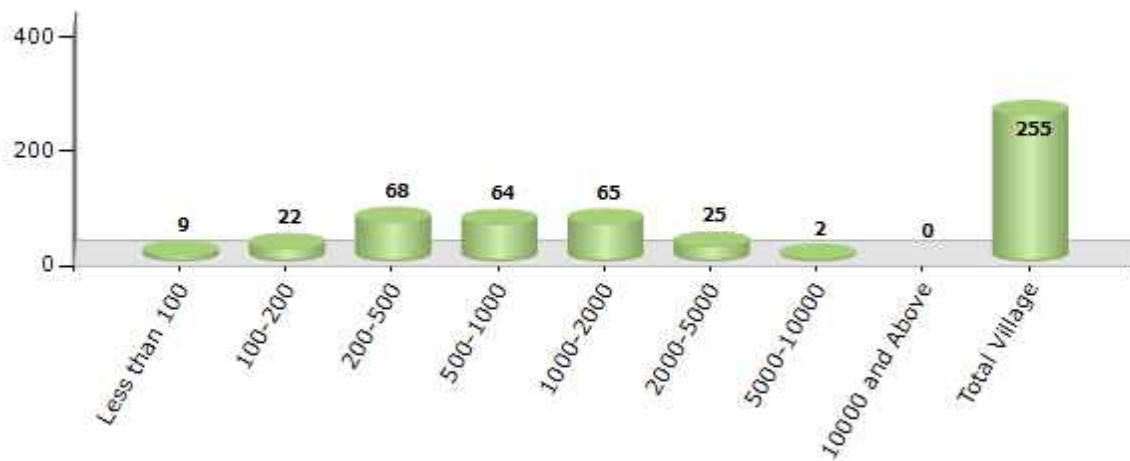
Contd....

Demographic

Number of Villages by Population Size - 2011

Less than 100	100-200	200-500	500-1000	1000-2000	2000-5000	5000-10000	10000 and Above	Total Village
9	22	68	64	65	25	2	0	255

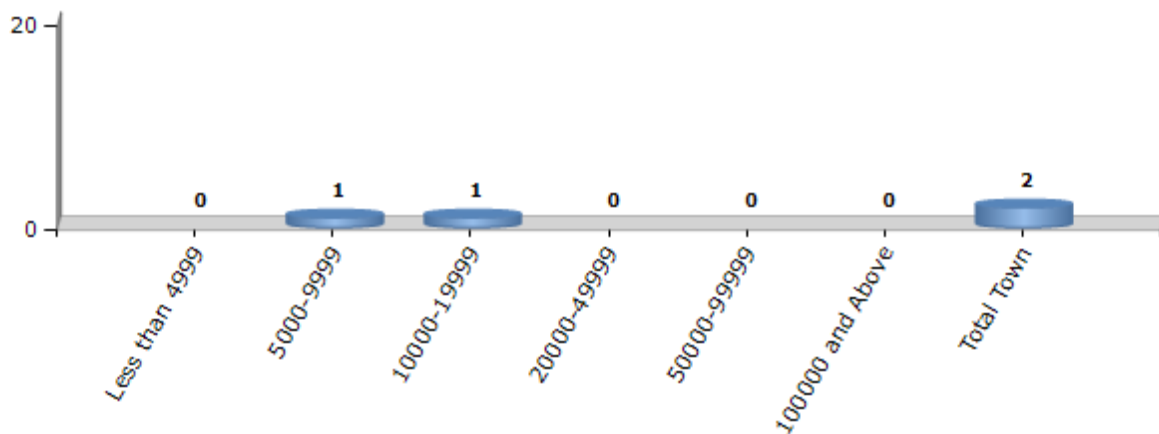
Number of Villages by Population Size - 2011



Number of Towns by Population Size - 2011

Less than 4999	5000-9999	10000-19999	20000-49999	50000-99999	100000 and Above	Total Town
0	1	1	0	0	0	2

Number of Towns by Population Size - 2011

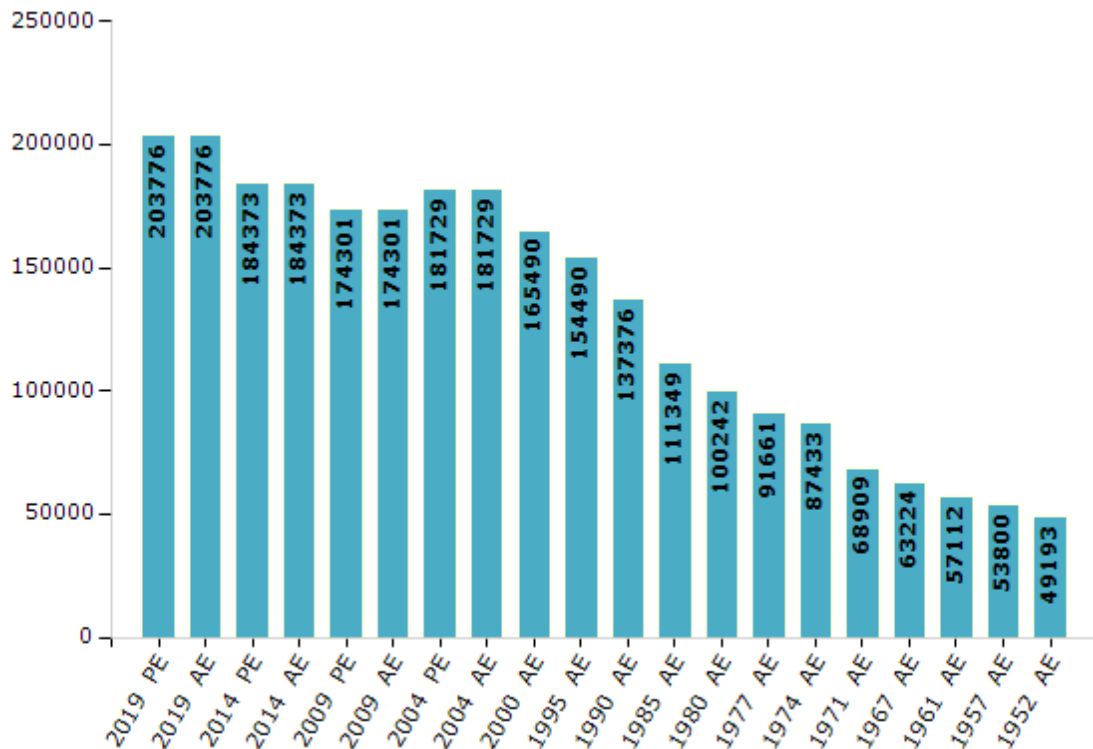


Electoral Features

Electors by Male & Female

Year	Male	Female	Others	Total	Year	Male	Female	Others	Total
2019 PE	106276	97490	10	203776	1990 AE	73888	63488	-	137376
2019 AE	106276	97490	10	203776	1985 AE	59008	52341	-	111349
2014 PE	97811	86560	2	184373	1980 AE	52710	47532	-	100242
2014 AE	97811	86560	2	184373	1977 AE	47959	43702	-	91661
2009 PE	91860	82441	-	174301	1974 AE	45428	42005	-	87433
2009 AE	91860	82441	-	174301	1971 AE	35504	33405	-	68909
2004 PE	95188	86541	-	181729	1967 AE	63224	0	-	63224
2004 AE	95188	86541	-	181729	1961 AE	57112	0	-	57112
2000 AE	87294	78196	-	165490	1957 AE	53800	0	-	53800
1999 PE	-	-	-	-	1952 AE	-	-	-	49193
1995 AE	81857	72633	-	154490					

Number of Electors



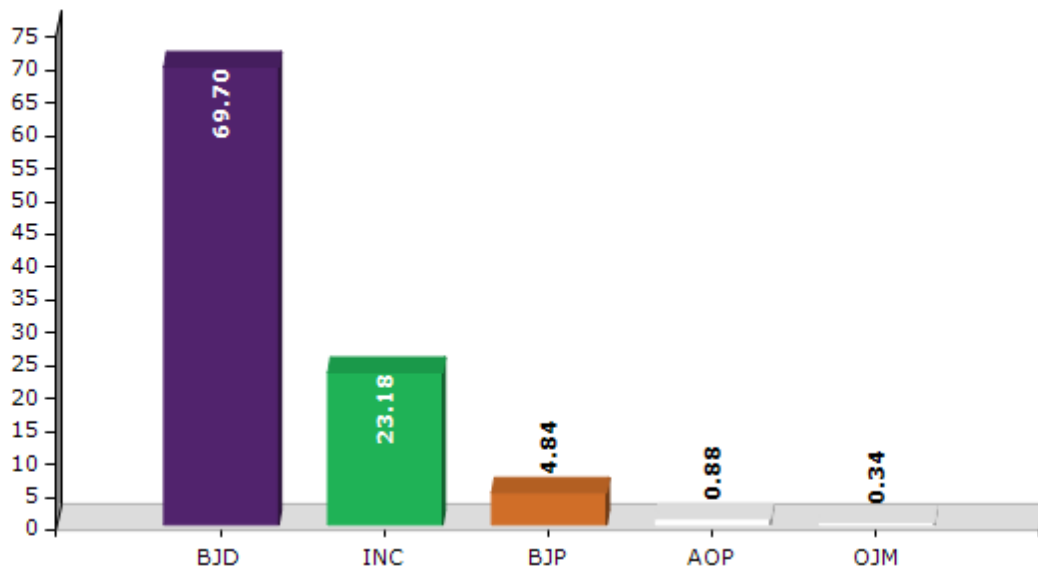
Note : AE : Assembly Election, PE : Assembly Segment of Parliamentary Election

Historical Summary Election Results

Summary Result of Assembly Election - 2014

Candidate Name	Party	Votes	Votes %
Ranendra Pratap Swain	BJD	102605	69.7
Bichitrananda Muduli	INC	34118	23.18
Biswa Sundar Mishra	BJP	7132	4.84
Bikash Chandra Panda	AOP	1290	0.88
Shankarshan Mohanty	OJM	495	0.34
	NOTA	1572	1.07

Votes Percentage of Top Parties - 2014



Polling Station Level Election Results

Number and Name of Polling Stations (PS) (2019 AE)

Number of Polling Stations	Name of Polling Stations	Number of Polling Stations	Name of Polling Stations
1	Bhejia Saarasahi	22	Baliput
2	Gokarnakhal	23	Biriput
3	Nuapatna (Part)	24	Jemadeipur(Part)
4	Nuapatna (Part)	25	Jemadeipur(Part)
5	Nuapatna (Part)	26	Jemadeipur(Part)
6	Nuapatna (Part)	27	Pankal
7	Nuapatna (Part)	28	Haridapasi
8	Nuapatna (Part)	29	Haridapasi
9	Bhogada	30	Achalakote(Part)
10	Basudevpur	31	Achalakote(Part)
11	Belanta	32	Achalakote(Part)
12	Harisharanapur	33	Karadapali
13	Manapur	34	Baneswarapada
14	Hatamal	35	Bindhanima (Part)
15	Sananauput	36	Bindhanima (Part)
16	Sunthipal	37	Bindhanima
17	Bishnupur	38	Bindhanima (Part)
18	Koilikanya	39	Kalibiri
19	Gadadharpur	40	Kalibiri Part
20	Gadadharpur	41	Raghurampur
21	Banamalipur	42	Nandapur

Contd....

Polling Station Level Election Results

Polling Station-wise Votes Secured by Overall Top Five Parties in Athagarh Assembly in Assembly Election (AE) under Cuttack Parliamentary Constituency in Odisha (2019)

Number of Polling Station	Winner - Ranendra Pratap Swain (BJD)	Runner-up - Brajendra Kumar Ray (BJP)	3rd - Uma Ballav Rath (INC)	4th - Abhaya Kumar Barik (IND)	5th - Subas Kumar Sahoo (BSP)	NOTA	Other	Total Votes Secured
36	365	257	57	45	2	2	8	736
37	404	272	79	17	4	6	1	783
38	380	262	62	36	1	4	6	751
39	473	214	39	11	3	0	2	742
40	158	47	5	4	2	1	2	219
41	432	43	92	101	1	1	1	671
42	356	83	7	3	2	0	2	453
43	442	53	4	304	3	0	4	810
44	382	129	131	7	1	7	10	667
45	280	110	75	6	1	0	2	474
46	339	114	50	5	8	2	6	524
47	267	81	52	19	1	0	4	424
48	318	159	103	11	2	8	9	610
49	272	148	63	26	2	0	0	511
50	304	194	101	17	2	4	2	624
51	384	149	97	63	4	1	7	705
52	334	193	96	60	2	5	3	693
53	443	156	120	23	2	4	6	754
54	566	239	26	4	1	6	12	854
55	363	178	36	3	2	2	2	586
56	366	123	63	11	2	1	5	571
57	391	129	24	3	0	2	4	553
58	249	44	19	0	2	0	2	316
59	429	138	124	10	6	12	20	739
60	359	103	81	5	2	5	6	561
61	474	199	238	10	4	8	10	943
62	314	201	119	5	3	6	12	660
63	259	150	39	3	2	1	2	456
64	314	131	113	29	1	1	2	591
65	258	56	4	57	1	1	2	379
66	248	68	11	57	0	0	0	384
67	297	98	90	8	0	3	4	500
68	258	53	2	13	2	0	1	329
69	430	172	15	46	2	2	1	668
70	334	222	8	16	0	1	3	584

Contd....

Polling Station Level Election Results

Winner, Runner-up and 3rd Party Position & Winning Margin According to Polling Stations in Athagarh Assembly in Assembly Election (AE) under Cuttack Parliamentary Constituency in Odisha (2019)

Polling Station Number	Winner Party	Winner Votes (%)	Runner-up Party	Runner-up Votes (%)	Winning Margin Votes (%)	Third Party	Third Party Votes (%)	Other Votes (%)
71	BJD	540 (60.95)	IND (AKB)	193 (21.78)	347 (39.17)	BJP	114 (12.87)	39 (4.4)
72	BJD	417 (77.8)	BJP	77 (14.37)	340 (63.43)	IND (AKB)	20 (3.73)	22 (4.1)
73	BJD	632 (65.09)	BJP	254 (26.16)	378 (38.93)	INC	52 (5.36)	33 (3.4)
74	BJD	332 (64.84)	BJP	123 (24.02)	209 (40.82)	INC	29 (5.66)	28 (5.47)
75	BJD	357 (66.48)	BJP	113 (21.04)	244 (45.44)	INC	54 (10.06)	13 (2.42)
76	BJD	192 (78.69)	BJP	41 (16.8)	151 (61.89)	IND (AKB)	10 (4.1)	1 (0.41)
77	BJD	497 (54.5)	BJP	342 (37.5)	155 (17)	INC	53 (5.81)	20 (2.19)
78	BJD	272 (76.62)	BJP	53 (14.93)	219 (61.69)	INC	20 (5.63)	10 (2.82)
79	BJD	431 (73.93)	BJP	100 (17.15)	331 (56.78)	IND (AKB)	38 (6.52)	14 (2.4)
80	BJD	245 (76.32)	BJP	60 (18.69)	185 (57.63)	INC	12 (3.74)	4 (1.25)
81	BJD	341 (68.2)	BJP	135 (27)	206 (41.2)	INC	22 (4.4)	2 (0.4)
82	BJD	487 (77.8)	BJP	125 (19.97)	362 (57.83)	INC	5 (0.8)	9 (1.44)
83	BJD	301 (51.54)	INC	144 (24.66)	157 (26.88)	BJP	123 (21.06)	16 (2.74)
84	BJP	227 (47.79)	BJD	213 (44.84)	14 (2.95)	INC	29 (6.11)	6 (1.26)
85	BJD	102 (62.96)	INC	36 (22.22)	66 (40.74)	BJP	23 (14.2)	1 (0.62)
86	BJP	292 (54.07)	BJD	230 (42.59)	62 (11.48)	INC	11 (2.04)	7 (1.3)
87	BJD	280 (48.28)	BJP	221 (38.1)	59 (10.18)	IND (AKB)	46 (7.93)	33 (5.69)
88	BJD	474 (53.8)	BJP	340 (38.59)	134 (15.21)	INC	25 (2.84)	42 (4.77)
89	BJD	416 (52.33)	BJP	327 (41.13)	89 (11.2)	INC	24 (3.02)	28 (3.52)
90	BJD	437 (58.97)	BJP	250 (33.74)	187 (25.23)	INC	26 (3.51)	28 (3.78)
91	BJD	569 (64)	BJP	263 (29.58)	306 (34.42)	INC	42 (4.72)	15 (1.69)
92	BJD	338 (47.94)	BJP	254 (36.03)	84 (11.91)	IND (AKB)	88 (12.48)	25 (3.55)
93	BJD	434 (75.74)	BJP	114 (19.9)	320 (55.84)	IND (AKB)	11 (1.92)	14 (2.44)
94	BJD	344 (65.28)	BJP	149 (28.27)	195 (37.01)	INC	12 (2.28)	22 (4.17)
95	BJD	513 (59.79)	BJP	281 (32.75)	232 (27.04)	INC	49 (5.71)	15 (1.75)
96	BJD	471 (60.31)	BJP	207 (26.5)	264 (33.81)	INC	50 (6.4)	53 (6.79)
97	BJD	425 (75.62)	BJP	128 (22.78)	297 (52.84)	INC	4 (0.71)	5 (0.89)
98	BJD	191 (56.85)	BJP	119 (35.42)	72 (21.43)	INC	11 (3.27)	15 (4.46)
99	BJD	379 (90.02)	BJP	28 (6.65)	351 (83.37)	INC	13 (3.09)	1 (0.24)
100	BJD	724 (80.89)	BJP	135 (15.08)	589 (65.81)	INC	22 (2.46)	14 (1.56)
101	BJD	664 (66.53)	BJP	272 (27.25)	392 (39.28)	INC	25 (2.51)	37 (3.71)
102	BJD	339 (49.13)	BJP	331 (47.97)	8 (1.16)	INC	10 (1.45)	10 (1.45)
103	BJD	370 (51.39)	BJP	250 (34.72)	120 (16.67)	INC	77 (10.69)	23 (3.19)
104	BJD	138 (51.69)	BJP	86 (32.21)	52 (19.48)	INC	22 (8.24)	21 (7.87)
105	BJD	214 (46.42)	BJP	191 (41.43)	23 (4.99)	INC	37 (8.03)	19 (4.12)

Contd....

Socio-Economic Amenities - Rural

Access to Education Facilities

Particulars	Number of Villages (% of Population)				
	Available	Not Available	If Not Available (Distance of Nearest Facility)		
			A	B	C
Govt. Primary School	203 (93)	52 (7)	52 (7)	0 (0)	0 (0)
Private Primary School	10 (11)	245 (89)	0 (0)	0 (0)	0 (0)
Govt. Middle School	99 (66)	156 (34)	68 (17)	75 (15)	11 (2)
Private Middle School	9 (12)	246 (88)	1 (0)	0 (0)	0 (0)
Govt. Secondary School	41 (35)	214 (65)	175 (49)	13 (4)	0 (0)
Private Secondary School	7 (9)	248 (91)	17 (3)	3 (1)	0 (0)
Govt. Senior Secondary School	2 (2)	253 (98)	43 (16)	49 (22)	19 (10)
Private Senior Secondary School	3 (4)	252 (96)	65 (27)	64 (17)	10 (3)
Govt. Arts and Science Degree College	1 (1)	254 (99)	28 (15)	43 (21)	20 (8)
Private Arts and Science Degree College	3 (4)	252 (96)	62 (23)	73 (21)	25 (8)
Govt. Engineering College	0 (0)	255 (100)	0 (0)	0 (0)	0 (0)
Private Engineering College	1 (0)	254 (100)	9 (4)	56 (15)	189 (80)
Govt. Medicine College	0 (0)	255 (100)	1 (0)	0 (0)	254 (100)
Private Medicine College	0 (0)	255 (100)	0 (0)	0 (0)	0 (0)
Govt. Management Institute	0 (0)	255 (100)	0 (0)	0 (0)	236 (91)
Private Management Institute	0 (0)	255 (100)	0 (0)	1 (0)	18 (9)
Govt. Polytechnic	0 (0)	255 (100)	0 (0)	1 (1)	230 (88)
Private Polytechnic	0 (0)	255 (100)	1 (1)	0 (0)	16 (8)
Govt. Vocational Training School/ITI	0 (0)	255 (100)	1 (1)	6 (4)	10 (5)
Private Vocational Training School/ITI	2 (2)	253 (98)	24 (16)	88 (29)	121 (43)
Govt. Non Formal Training Centre	0 (0)	255 (100)	0 (0)	11 (3)	180 (62)
Private Non Formal Training Centre	0 (0)	255 (100)	0 (0)	1 (1)	39 (22)
Govt. School For Disabled	0 (0)	255 (100)	0 (0)	6 (1)	239 (93)
Private School For Disabled	0 (0)	255 (100)	0 (0)	0 (0)	2 (2)
Government Others	0 (0)	255 (100)	23 (8)	50 (17)	89 (28)
Private Others	0 (0)	255 (100)	0 (0)	0 (0)	0 (0)

Note : Distance A : Less than 5 km; B : Between 5-10 km; C : 10+ km.; Source : Data Analysis is based on 2011 Census.

DISCLAIMER

The Terms of Use and Disclaimer of Datanet India Private Limited (hereinafter referred to as "Datanet") for use of this analysis report of **Athagarh Assembly Constituency (Athagarh Vidhan Sabha)** :-

1. **Assembly Factbook™** is a Registered Trade Mark owned by Datanet.
2. All the maps are sketched and graphical representation only and have not been drawn to the scale and also not to represent the actual geographical area or boundary of the unit.
3. The data for the aforesaid analysis is based on authentic sources and has been culled from the various publications of Census, CSO and NSSO for district and block level data, various central and state government departments, Central & State Elections Commissions and the concerned Returning Officers' releases, Electoral Rolls, Election results and allied publications, internal assessment, surveys, estimates and analysis. Therefore, certain adjustment of data at micro level may have been done to arrive closer to the macro data.
4. Data have been provided on an "As Is" and "As AVAILABLE" basis
5. The colours shown in the maps or diagram and charts of a particular party, alliance or AC are indicative and do not represent them.
6. This publication which includes maps, sheets, graphs and data would be the property under copyright of Datanet only. The user may use these for its internal study, analysis and research purposes. It's public display, re-selling or any commercial uses by the user are not allowed.
7. Datanet has taken due care and caution in compilation and processing of data and allied information, but does not guarantee the accuracy, adequacy or completeness of any information/analysis and will be not responsible for any errors or omissions or for the results obtained from the use of such information/analysis.
8. All the contents for the publication have been culled from various authentic sources and Datanet reasonably believes such sources to be reliable, but does not make any representations, express or implied as to the accuracy or fitness of use of such information. The information or contents of the information/analysis do not constitute advice and should not be relied upon in making (or refraining from making) any decision. Any reliance placed upon the information provided by Datanet is the sole responsibility and strictly at the user's risk.
9. In no event will Datanet be liable for any damages (including, without limitation, damages for loss of business projects, or loss of profits) arising in contract, tort or otherwise from the use of or inability to use any of its contents, or from any action taken (or refrained from being taken) as a result of using the analysis or any of its contents. Datanet its directors, owners, editors, officials, employees, distributor and agents or any associate will not be liable for any errors in the information contained or any consequences arising from the use of the contents of the provided information/analysis.
10. If any provision of these terms and conditions is held invalid or illegal or unenforceable for any reason by any court of competent jurisdiction, such provision shall be severed and the remainder of provisions of the terms and conditions shall continue in full force and effect as if the Term of Use had been executed with the invalid, illegal or unenforceable provision eliminated.
11. If there are any discrepancies in the information provided, please bring it to attention of Datanet for suitable rectification measures.

Buy Online This Complete Book At
Datanet India eBooks Store

www.indiastatpublications.com

or go directly at

[http://www.indiastatpublications.com/
Assembly_factbook/Odisha/Cuttack/ Athagarh](http://www.indiastatpublications.com/Assembly_factbook/Odisha/Cuttack/Athagarh)

 **india**stat**elections**

ISBN : 978-93-5301-869-6



9 789353 018696