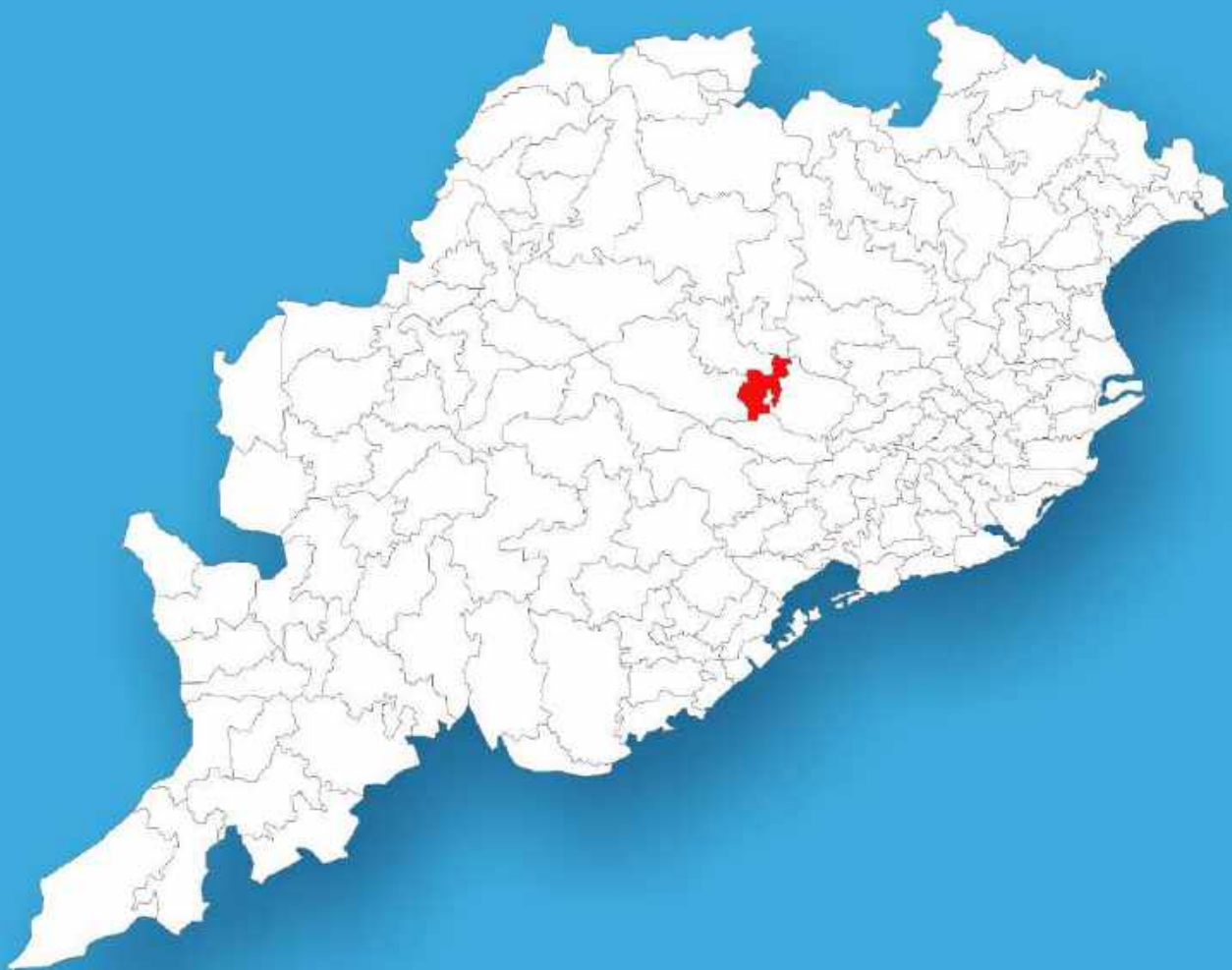




Odisha

# Assembly Factbook™

Angul Assembly Constituency



Key Electoral Data of Angul  
Assembly Constituency (Vidhan Sabha)

Odisha

# **Assembly Factbook™**

Angul Assembly Constituency



Angul Vidhan Sabha

## **Editor & Director**

Dr. R.K. Thukral

## **Research Editor**

Dr. Shafeeq Rahman

## **Compiled, Researched and Published by Datanet India Pvt. Ltd.**

D-100, 1st Floor,

Okhla Industrial Area, Phase-I,  
New Delhi- 110020.

Ph.: 91-11- 43580781-84

Email : support@indiastatpublications.com

Website : www.indiastatelections.com

## **Online Book Store :**

www.indiastatpublications.com

**Report No. :** AFB/OD-061-0125

**ISBN :** 978-93-5313-208-8

**First Edition :** January, 2018

**Eighth Updated Edition :** January, 2025

**Price :** Rs. 11500/-

US\$ 310

**© Datanet India Pvt. Ltd.**

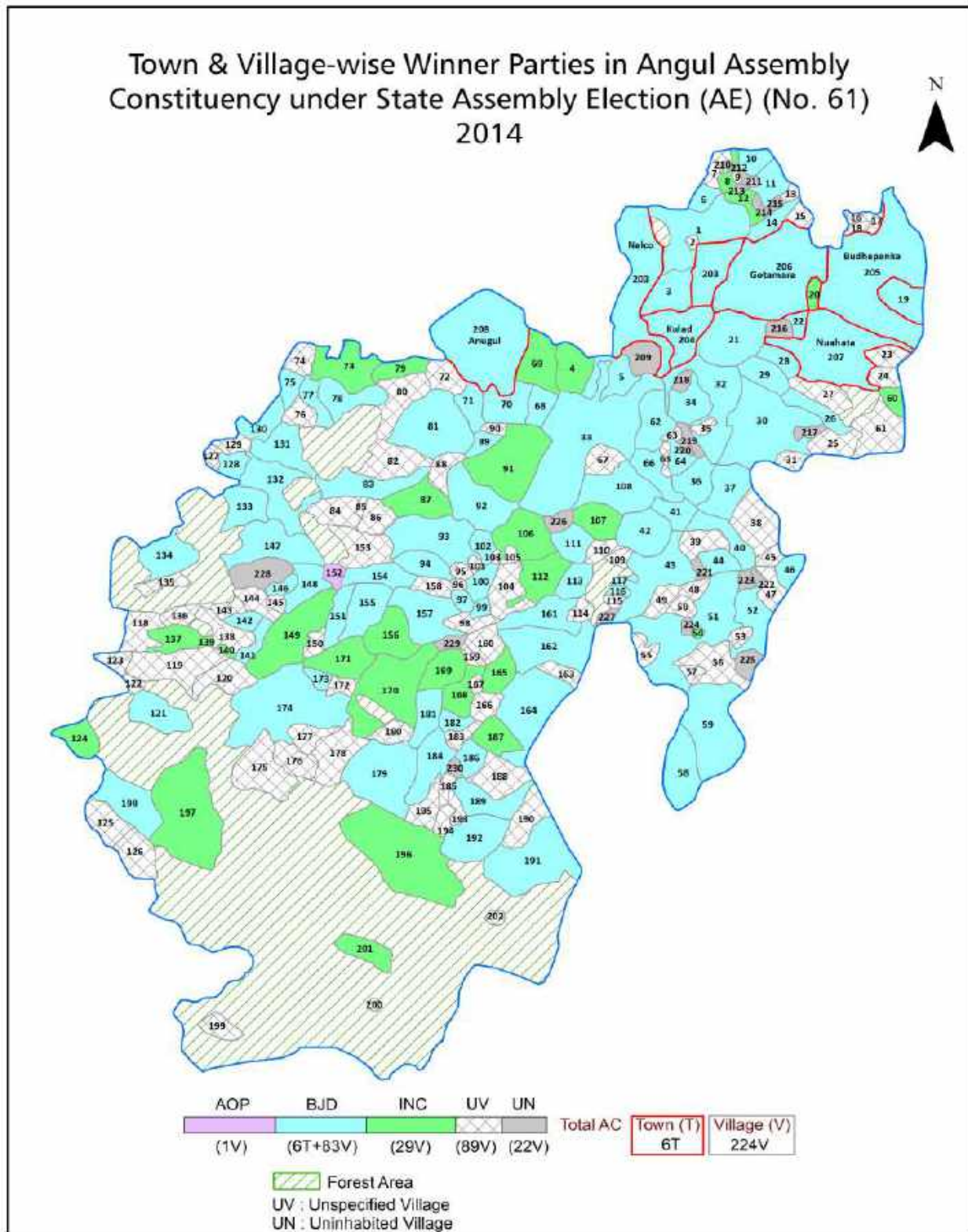
All rights reserved. No part of this book may be reproduced, stored in a retrieval system or transmitted in any form or by any means, mechanical photocopying, photographing, scanning, recording or otherwise without the prior written permission of the publisher. Please refer to Disclaimer at page no. 223 for the use of this publication.

Printed in India

No.	Particulars	Page No.
	<b>Introduction</b>	
1	Assembly Constituency - (Vidhan Sabha) at a Glance   Features of Assembly as per Delimitation Commission of India (2008)	1-2
	<b>Location and Political Maps</b>	
2	Location Map   Boundaries of Assembly Constituency - (Vidhan Sabha in District   Boundaries of Assembly Constituency under Parliamentary Constituency - (Lok Sabha)   Town & Village-wise Winner Parties- 2024-PE, 2024-AE, 2019-PE, 2019-AE, 2014-PE, 2014-AE, 2009-PE and 2009-AE	3-11
	<b>Administrative Setup (2011)</b>	
3	District   Sub-district   Towns   Villages   Inhabited Villages   Uninhabited Villages   Village Panchayat   Intermediate Panchayat	12-22
	<b>Demographics (2011)</b>	
4	Population   Households   Rural/Urban Population   Towns and Villages by Population Size   Sex Ratio (Total & 0-6 Years)   Religious Population   Social Population   Literacy Rate	23-24
	<b>Electoral Features</b>	
5	Important Dates of Last Elections Held   Electors by Gender   Service Electors   Voters   Voters Turnout   Polling Stations & Average Number of Electors per Polling Station   Electors by Age Group   Present Elected Representatives	25-30
	<b>Historical Summary Election Results</b>	
6	Vote Share of Major Parties   Winning Margin (Number & Percentage   Polarity of Parties   Summary Result of Assembly Segment of Parliamentary Elections 2024, 2019, 2014, 2009, 2004 and 1999   Summary Result of Assembly Elections 2024, 2019, 2014, 2009, 2004, 2000, 1995, 1990, 1985, 1980, 1977, 1974, 1971, 1967, 1961, 1957 and 1952	31-55
	<b>Polling Station Level Election Results</b>	
7	Name and Number of Polling Station 2024-PE, 2024-AE, 2019-PE, 2019-AE, 2014-PE, 2014-AE, 2009-PE and 2009-AE   Polling Station-wise Electors, Voters & Voters Turnout 2024-PE, 2024-AE, 2019-PE, 2019-AE, 2014-PE, 2014-AE, 2009-PE and 2009-AE   Polling Station wise Elections Results 2024-PE, 2024-AE, 2019-PE, 2019-AE, 2014-PE, 2014-AE, 2009-PE and 2009-AE	56-202
	<b>Share of Assembly Constituency</b>	
8	Share of Assembly Constituency - (Vidhan Sabha) in State, District and Parliamentary Constituency - (Lok Sabha)	203
	<b>Socio-Economic Amenities (2011)</b>	
9	Access to Administrative Units   Agricultural, Manufacturing and Industrial Commodities   Demographic Indicators   Education   Health & Manpower   Drinking Water Supply   Sanitation   Entertainment and Recreations Infrastructure   Power   Food Allocation Distribution and Marketing of Agriculture Commodities Infrastructure   Transport and Road Infrastructure   Communication   Banking and Financial Services   Land Use   Irrigation Source	205-219
10	<b>Abbreviation &amp; Sources</b>	220-221
11	<b>Disclaimer</b>	223



## Location & Political Map



## Administrative Setup

### List of Village Panchayat & Intermediate Panchayat (Block) Name - 2011

Village Name	Village Panchayat Name	Intermediate Panchayat Name
Amantapur	Chheliapada	Anugul
Angarbandha	Angar Bandha	Anugul
Ankula(Part)	Khalari	Anugul
Apartipur	Budhapanka	Banarpal
Aradiha	Gadatarasa	Anugul
Arahat	Bauligarh	Banarpal
Badabahala	Kumurisingha	Anugul
Badahinso	Baragounia	Anugul
Badakanjeni	Inkarabandha	Anugul
Badakantakul	Badakantakul	Anugul
Badakera	Badakera	Anugul
Badakhali	Garhsantri	Banarpal
Badibahal	Kangulabentapur	Anugul
Bagachar	Budhapanka	Banarpal
Baghuapat	Nandapur	Anugul
Balanga	Balanga	Anugul
Balaramprasad(Part)	Balaram Prasad	Banarpal
Balaramprasadpatna (Part)	Balaram Prasad	Banarpal
Balarampur	Baluakata	Anugul
Balasinga	Balasinga	Anugul
Ballavpur	Kumurisingha	Anugul
Baluakata	Baluakata	Anugul
Banamira	Khinda	Anugul
Banarpal	Bonda	Banarpal
Bandanpasi	Baragounia	Anugul
Bandhupur	Tulasipal	Banarpal
Bantala	Bantala	Anugul
Baragounia	Baragounia	Anugul
Barsinga	Kangulabentapur	Anugul

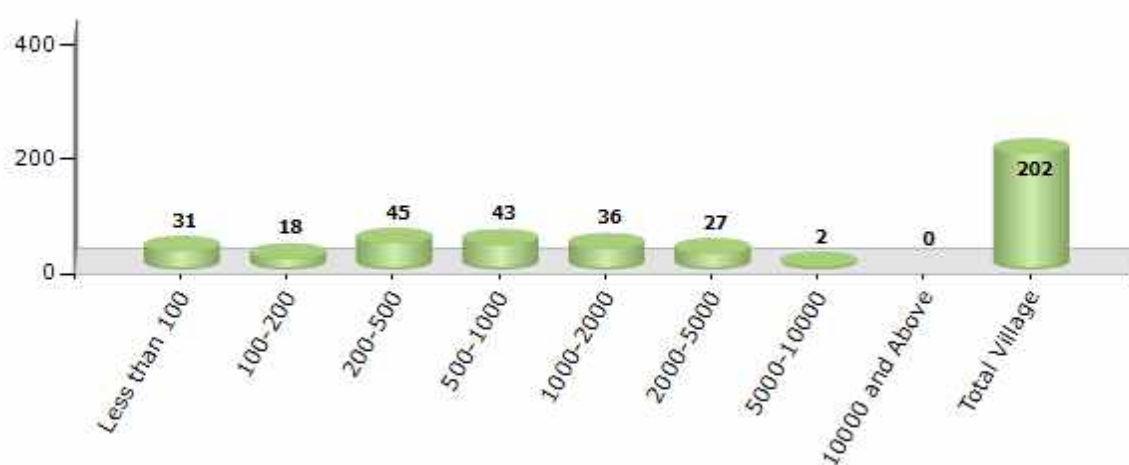
Contd....

## Demographic

### Number of Villages by Population Size - 2011

Less than 100	100-200	200-500	500-1000	1000-2000	2000-5000	5000-10000	10000 and Above	Total Village
31	18	45	43	36	27	2	0	202

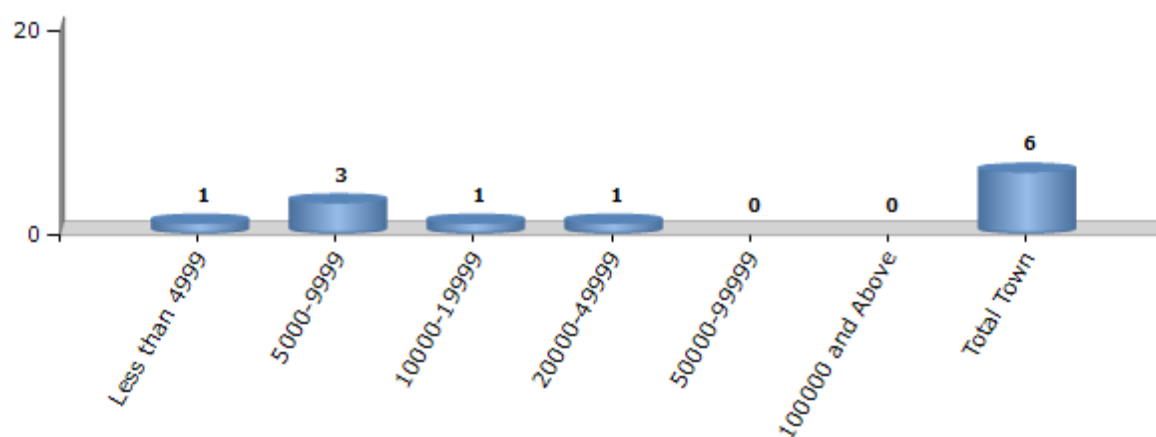
Number of Villages by Population Size - 2011



### Number of Towns by Population Size - 2011

Less than 4999	5000-9999	10000-19999	20000-49999	50000-99999	100000 and Above	Total Town
1	3	1	1	0	0	6

Number of Towns by Population Size - 2011



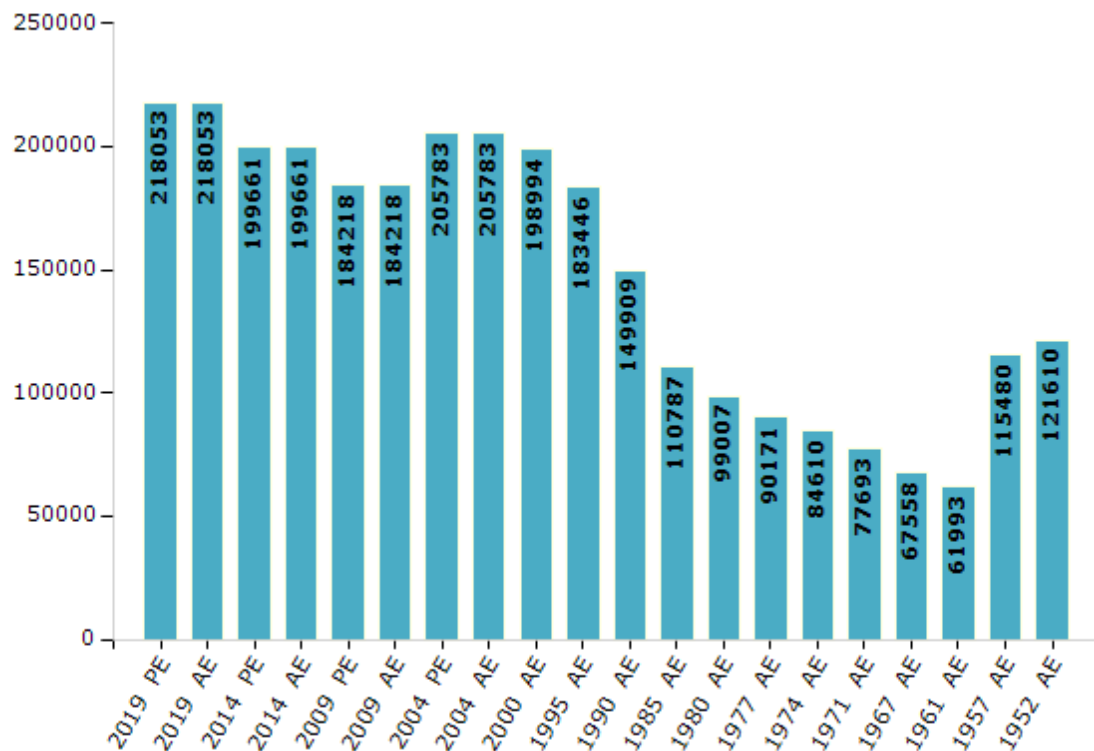
## Electoral Features

### Electors by Male & Female

Year	Male	Female	Others	Total
2019 PE	114551	103494	8	218053
2019 AE	114551	103494	8	218053
2014 PE	106232	93426	3	199661
2014 AE	106232	93426	3	199661
2009 PE	98539	85679	-	184218
2009 AE	98539	85679	-	184218
2004 PE	109729	96054	-	205783
2004 AE	109729	96054	-	205783
2000 AE	107358	91636	-	198994
1999 PE	-	-	-	-
1995 AE	99945	83501	-	183446

Year	Male	Female	Others	Total
1990 AE	83627	66282	-	149909
1985 AE	58543	52244	-	110787
1980 AE	52069	46938	-	99007
1977 AE	47111	43060	-	90171
1974 AE	44060	40550	-	84610
1971 AE	39473	38220	-	77693
1967 AE	67558	0	-	67558
1961 AE	61993	0	-	61993
1957 AE	115480	0	-	115480
1952 AE	-	-	-	121610

Number of Electors



Note : AE : Assembly Election, PE : Assembly Segment of Parliamentary Election

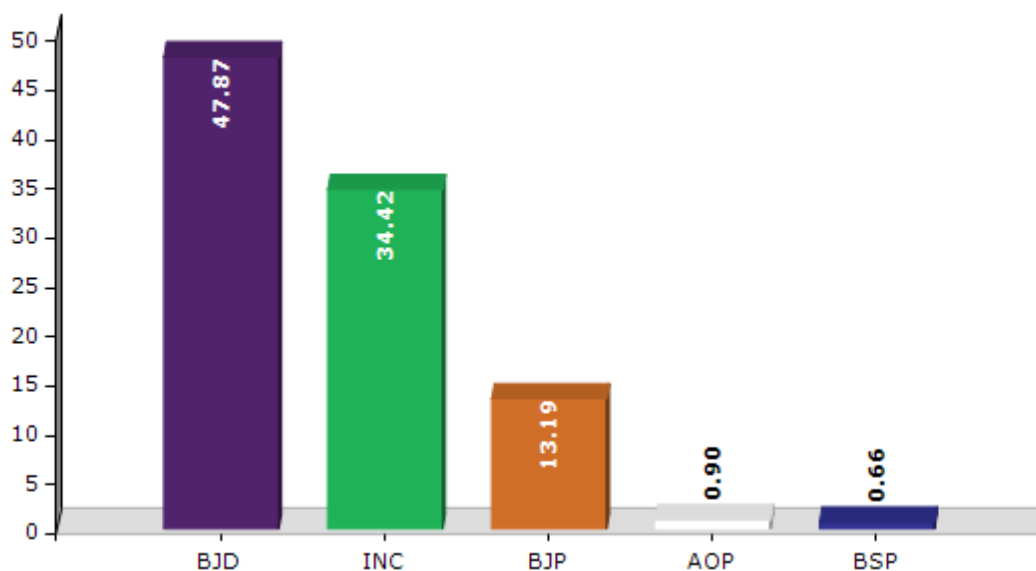


## Historical Summary Election Results

### Summary Result of Assembly Election - 2014

Candidate Name	Party	Votes	Votes %
Rajanikanta Singh	BJD	72379	47.87
Pratap Chandra Pradhan	INC	52036	34.42
Minaketan Amant	BJP	19948	13.19
Laxman Kumar Sahu	AOP	1356	0.9
Pramod Chandra Naik	BSP	993	0.66
Mandodari Roul	SUCI	956	0.63
Pradipta Kumar Tripathy	AAP	757	0.5
Debadatta Pati	SKD	566	0.37
Pradip Sahu	OJM	414	0.27
	NOTA	1787	1.18

Votes Percentage of Top Parties - 2014



## Polling Station Level Election Results

### Number and Name of Polling Stations (PS) (2019 AE)

Number of Polling Stations	Name of Polling Stations	Number of Polling Stations	Name of Polling Stations
1	Musapapuli	22	Amalapada-Iii
2	Musapapuli	23	Amalapada-Iv
3	Chandrabahala	24	Amalapada-V
4	Rantalei-1	25	Amalapada-Vi
5	Ratnalei-2	26	Amalapada-Vii
6	Panchamahala	27	Amalapada-Viii
7	Saradhapur-1	28	Hemsurpada-I
8	Saradhapur-2	29	Hemsurpada-Ii
9	Lingarajodi-1	30	Hemsurpada-Iii
10	Lingarajodi-2	31	Hemsurpada-Iv
11	Sabalbhanga-I	32	Bazarpada-I
12	Sabalbhanga-Ii	33	Bazarpada-Ii
13	Shyamsundarpur	34	Bazarpada-Iii
14	Baluakata-I	35	Hakimpada-I
15	Baluakata-Ii	36	Hakimpada-2
16	Similipada-I	37	Hakimpada-3
17	Similipada-Ii	38	Hakimpada-Iv
18	Similipada-3	39	Hakimpada-Vi
19	Similipada-4	40	Hakimpada-Vii
20	Amalapada-I	41	Hakimpada-Vii
21	Amalapada-Ii	42	Hakimpada-Viii

Contd....

## Polling Station Level Election Results

### Polling Station-wise Votes Secured by Overall Top Five Parties in Angul Assembly in Assembly Election (AE) under Dhenkanal Parliamentary Constituency in Odisha (2019)

Number of Polling Station	Winner - Rajanikant Singh (BJD)	Runner-up - Pratap Chandra Pradhan (BJP)	3rd - Biplab Kumar Jena (INC)	4th - Anil Bhoi (APoI)	5th - Trilochan Naik (BSP)	NOTA	Other	Total Votes Secured
36	151	208	25	0	1	1	5	391
37	218	437	57	4	3	14	2	735
38	298	196	54	5	1	2	4	560
39	260	285	50	3	4	7	10	619
40	145	295	41	4	2	0	4	491
41	96	229	35	1	1	6	4	372
42	226	280	72	1	4	7	6	596
43	224	349	72	1	4	7	1	658
44	186	372	88	5	3	10	8	672
45	199	246	95	8	30	6	14	598
46	293	236	36	2	1	2	4	574
47	254	344	110	8	7	6	7	736
48	217	313	74	5	3	11	4	627
49	344	529	181	16	5	8	15	1098
50	399	512	64	14	2	9	23	1023
51	243	168	206	5	2	5	14	643
52	177	320	36	2	1	2	6	544
53	265	494	96	5	1	7	17	885
54	185	225	39	0	2	3	7	461
55	164	151	39	1	0	2	3	360
56	194	422	227	2	7	4	12	868
57	300	414	137	9	5	11	13	889
58	327	324	79	3	3	6	10	752
59	347	327	124	6	4	1	5	814
60	294	241	165	6	7	0	28	741
61	297	219	92	3	5	5	22	643
62	418	398	101	8	3	10	28	966
63	198	242	62	8	2	1	6	519
64	216	473	120	10	3	2	30	854
65	184	391	125	4	5	4	13	726
66	378	174	139	7	5	4	16	723
67	330	280	57	9	6	7	22	711
68	303	272	67	3	2	5	17	669
69	259	445	163	2	4	1	62	936
70	113	96	119	0	7	5	5	345

Contd....

## Polling Station Level Election Results

**Winner, Runner-up and 3rd Party Position & Winning Margin According to Polling Stations in Angul Assembly in Assembly Election (AE) under Dhenkanal Parliamentary Constituency in Odisha (2019)**

Polling Station Number	Winner Party	Winner Votes (%)	Runner-up Party	Runner-up Votes (%)	Winning Margin Votes (%)	Third Party	Third Party Votes (%)	Other Votes (%)
71	INC	158 (43.77)	BJP	106 (29.36)	52 (14.41)	BJD	72 (19.94)	25 (6.93)
72	BJP	177 (48.23)	INC	112 (30.52)	65 (17.71)	BJD	51 (13.9)	27 (7.36)
73	BJD	162 (41.86)	BJP	121 (31.27)	41 (10.59)	INC	97 (25.06)	7 (1.81)
74	BJP	126 (38.53)	BJD	117 (35.78)	9 (2.75)	INC	73 (22.32)	11 (3.36)
75	BJD	134 (38.07)	BJP	110 (31.25)	24 (6.82)	INC	95 (26.99)	13 (3.69)
76	BJD	123 (37.61)	BJP	118 (36.09)	5 (1.52)	INC	74 (22.63)	12 (3.67)
77	BJD	134 (43.93)	BJP	111 (36.39)	23 (7.54)	INC	57 (18.69)	3 (0.98)
78	INC	326 (44.23)	BJD	212 (28.77)	114 (15.46)	BJP	182 (24.69)	17 (2.31)
79	INC	213 (39.15)	BJD	192 (35.29)	21 (3.86)	BJP	109 (20.04)	30 (5.51)
80	INC	355 (48.76)	BJD	260 (35.71)	95 (13.05)	BJP	102 (14.01)	11 (1.51)
81	INC	382 (58.59)	BJP	131 (20.09)	251 (38.5)	BJD	124 (19.02)	15 (2.3)
82	BJD	614 (62.02)	BJP	253 (25.56)	361 (36.46)	INC	108 (10.91)	15 (1.52)
83	BJD	482 (51.11)	INC	226 (23.97)	256 (27.14)	BJP	189 (20.04)	46 (4.88)
84	BJD	676 (71.99)	BJP	167 (17.78)	509 (54.21)	INC	57 (6.07)	39 (4.15)
85	BJD	561 (70.04)	BJP	146 (18.23)	415 (51.81)	INC	75 (9.36)	19 (2.37)
86	BJD	448 (53.72)	BJP	311 (37.29)	137 (16.43)	INC	48 (5.76)	27 (3.24)
87	BJD	602 (65.22)	BJP	247 (26.76)	355 (38.46)	INC	41 (4.44)	33 (3.58)
88	BJD	283 (47.17)	BJP	276 (46)	7 (1.17)	INC	37 (6.17)	4 (0.67)
89	BJD	422 (57.89)	INC	173 (23.73)	249 (34.16)	BJP	113 (15.5)	21 (2.88)
90	BJD	360 (56.34)	BJP	189 (29.58)	171 (26.76)	INC	76 (11.89)	14 (2.19)
91	BJD	319 (50.24)	BJP	245 (38.58)	74 (11.66)	INC	59 (9.29)	12 (1.89)
92	BJD	173 (37.04)	BJP	173 (37.04)	0 (0)	INC	78 (16.7)	43 (9.21)
93	BJP	379 (51.22)	BJD	220 (29.73)	159 (21.49)	INC	117 (15.81)	24 (3.24)
94	BJD	206 (39.85)	BJP	181 (35.01)	25 (4.84)	INC	113 (21.86)	17 (3.29)
95	BJP	234 (39)	BJD	201 (33.5)	33 (5.5)	INC	148 (24.67)	17 (2.83)
96	BJD	213 (52.72)	BJP	101 (25)	112 (27.72)	INC	75 (18.56)	15 (3.71)
97	BJD	174 (40.28)	BJP	168 (38.89)	6 (1.39)	INC	79 (18.29)	11 (2.55)
98	BJP	275 (45.16)	BJD	272 (44.66)	3 (0.5)	INC	39 (6.4)	23 (3.78)
99	BJP	194 (40.67)	BJD	177 (37.11)	17 (3.56)	INC	80 (16.77)	26 (5.45)
100	BJD	325 (40.22)	BJP	282 (34.9)	43 (5.32)	INC	178 (22.03)	23 (2.85)
101	INC	196 (33.91)	BJD	194 (33.56)	2 (0.35)	BJP	158 (27.34)	30 (5.19)
102	BJP	162 (38.94)	BJD	123 (29.57)	39 (9.37)	INC	111 (26.68)	20 (4.81)
103	BJP	299 (45.72)	BJD	264 (40.37)	35 (5.35)	INC	81 (12.39)	10 (1.53)
104	BJP	252 (44.68)	BJD	229 (40.6)	23 (4.08)	INC	66 (11.7)	17 (3.01)
105	INC	183 (49.59)	BJD	111 (30.08)	72 (19.51)	BJP	72 (19.51)	3 (0.81)

Contd....

## Socio-Economic Amenities - Rural

### Access to Education Facilities

Particulars	Number of Villages (% of Population)				
	Available	Not Available	If Not Available (Distance of Nearest Facility)		
			A	B	C
Govt. Primary School	173 (97)	29 (3)	26 (2)	2 (0)	1 (0)
Private Primary School	28 (15)	174 (85)	0 (0)	0 (0)	0 (0)
Govt. Middle School	84 (76)	118 (24)	46 (13)	45 (7)	6 (2)
Private Middle School	29 (13)	173 (87)	0 (0)	0 (0)	0 (0)
Govt. Secondary School	39 (46)	163 (54)	100 (33)	44 (13)	0 (0)
Private Secondary School	17 (11)	185 (89)	4 (3)	3 (1)	0 (0)
Govt. Senior Secondary School	3 (4)	199 (96)	22 (10)	30 (22)	97 (35)
Private Senior Secondary School	4 (4)	198 (96)	15 (14)	29 (11)	2 (0)
Govt. Arts and Science Degree College	2 (3)	200 (97)	10 (4)	36 (26)	123 (49)
Private Arts and Science Degree College	2 (3)	200 (97)	11 (8)	18 (6)	0 (0)
Govt. Engineering College	0 (0)	202 (100)	14 (5)	55 (39)	132 (53)
Private Engineering College	1 (2)	201 (98)	0 (0)	0 (0)	0 (0)
Govt. Medicine College	0 (0)	202 (100)	0 (0)	0 (0)	187 (94)
Private Medicine College	0 (0)	202 (100)	0 (0)	0 (0)	0 (0)
Govt. Management Institute	0 (0)	202 (100)	7 (5)	15 (14)	179 (80)
Private Management Institute	1 (1)	201 (99)	0 (0)	0 (0)	0 (0)
Govt. Polytechnic	0 (0)	202 (100)	3 (1)	16 (13)	147 (61)
Private Polytechnic	1 (1)	201 (99)	4 (2)	11 (10)	9 (4)
Govt. Vocational Training School/ITI	0 (0)	202 (100)	4 (2)	23 (14)	117 (46)
Private Vocational Training School/ITI	2 (3)	200 (97)	3 (1)	19 (14)	25 (17)
Govt. Non Formal Training Centre	0 (0)	202 (100)	2 (1)	26 (19)	131 (55)
Private Non Formal Training Centre	0 (0)	202 (100)	0 (0)	2 (2)	22 (9)
Govt. School For Disabled	0 (0)	202 (100)	3 (1)	19 (13)	124 (51)
Private School For Disabled	0 (0)	202 (100)	8 (2)	6 (8)	29 (14)
Government Others	0 (0)	202 (100)	0 (0)	1 (1)	2 (2)
Private Others	0 (0)	202 (100)	0 (0)	0 (0)	0 (0)

Note : Distance A : Less than 5 km; B : Between 5-10 km; C : 10+ km.; Source : Data Analysis is based on 2011 Census.



## DISCLAIMER

The Terms of Use and Disclaimer of Datanet India Private Limited (hereinafter referred to as "Datanet") for use of this analysis report of **Angul Assembly Constituency (Angul Vidhan Sabha)** :-

1. **Assembly Factbook™** is a Registered Trade Mark owned by Datanet.
2. All the maps are sketched and graphical representation only and have not been drawn to the scale and also not to represent the actual geographical area or boundary of the unit.
3. The data for the aforesaid analysis is based on authentic sources and has been culled from the various publications of Census, CSO and NSSO for district and block level data, various central and state government departments, Central & State Elections Commissions and the concerned Returning Officers' releases, Electoral Rolls, Election results and allied publications, internal assessment, surveys, estimates and analysis. Therefore, certain adjustment of data at micro level may have been done to arrive closer to the macro data.
4. Data have been provided on an "As Is" and "As AVAILABLE" basis
5. The colours shown in the maps or diagram and charts of a particular party, alliance or AC are indicative and do not represent them.
6. This publication which includes maps, sheets, graphs and data would be the property under copyright of Datanet only. The user may use these for its internal study, analysis and research purposes. It's public display, re-selling or any commercial uses by the user are not allowed.
7. Datanet has taken due care and caution in compilation and processing of data and allied information, but does not guarantee the accuracy, adequacy or completeness of any information/analysis and will be not responsible for any errors or omissions or for the results obtained from the use of such information/analysis.
8. All the contents for the publication have been culled from various authentic sources and Datanet reasonably believes such sources to be reliable, but does not make any representations, express or implied as to the accuracy or fitness of use of such information. The information or contents of the information/analysis do not constitute advice and should not be relied upon in making (or refraining from making) any decision. Any reliance placed upon the information provided by Datanet is the sole responsibility and strictly at the user's risk.
9. In no event will Datanet be liable for any damages (including, without limitation, damages for loss of business projects, or loss of profits) arising in contract, tort or otherwise from the use of or inability to use any of its contents, or from any action taken (or refrained from being taken) as a result of using the analysis or any of its contents. Datanet its directors, owners, editors, officials, employees, distributor and agents or any associate will not be liable for any errors in the information contained or any consequences arising from the use of the contents of the provided information/analysis.
10. If any provision of these terms and conditions is held invalid or illegal or unenforceable for any reason by any court of competent jurisdiction, such provision shall be severed and the remainder of provisions of the terms and conditions shall continue in full force and effect as if the Term of Use had been executed with the invalid, illegal or unenforceable provision eliminated.
11. If there are any discrepancies in the information provided, please bring it to attention of Datanet for suitable rectification measures.

**Buy Online This Complete Book At  
Datanet India eBooks Store**

**[www.indiastatpublications.com](http://www.indiastatpublications.com)**

**or go directly at**

**[http://www.indiastatpublications.com/  
Assembly\\_factbook/Odisha/Dhenkanal/ Angul](http://www.indiastatpublications.com/Assembly_factbook/Odisha/Dhenkanal/Angul)**

 **indiastat**elections

ISBN : 978-93-5313-208-8

