



Odisha

# Assembly Factbook™

Hindol Assembly Constituency



Key Electoral Data of Hindol  
Assembly Constituency (Vidhan Sabha)

Odisha

# Assembly Factbook™

Hindol Assembly Constituency



Hindol Vidhan Sabha

## **Editor & Director**

Dr. R.K. Thukral

## **Research Editor**

Dr. Shafeeq Rahman

## **Compiled, Researched and Published by Datanet India Pvt. Ltd.**

D-100, 1st Floor,

Okhla Industrial Area, Phase-I,  
New Delhi- 110020.

Ph.: 91-11- 43580781-84

Email : support@indiastatpublications.com

Website : www.indiastatelections.com

## **Online Book Store :**

www.indiastatpublications.com

**Report No. :** AFB/OD-056-0624

**ISBN :** 978-93-5313-242-2

**First Edition :** January, 2018

**Seventh Updated Edition :** June, 2024

**Price :** Rs. 11500/-

US\$ 310

© **Datanet India Pvt. Ltd.**

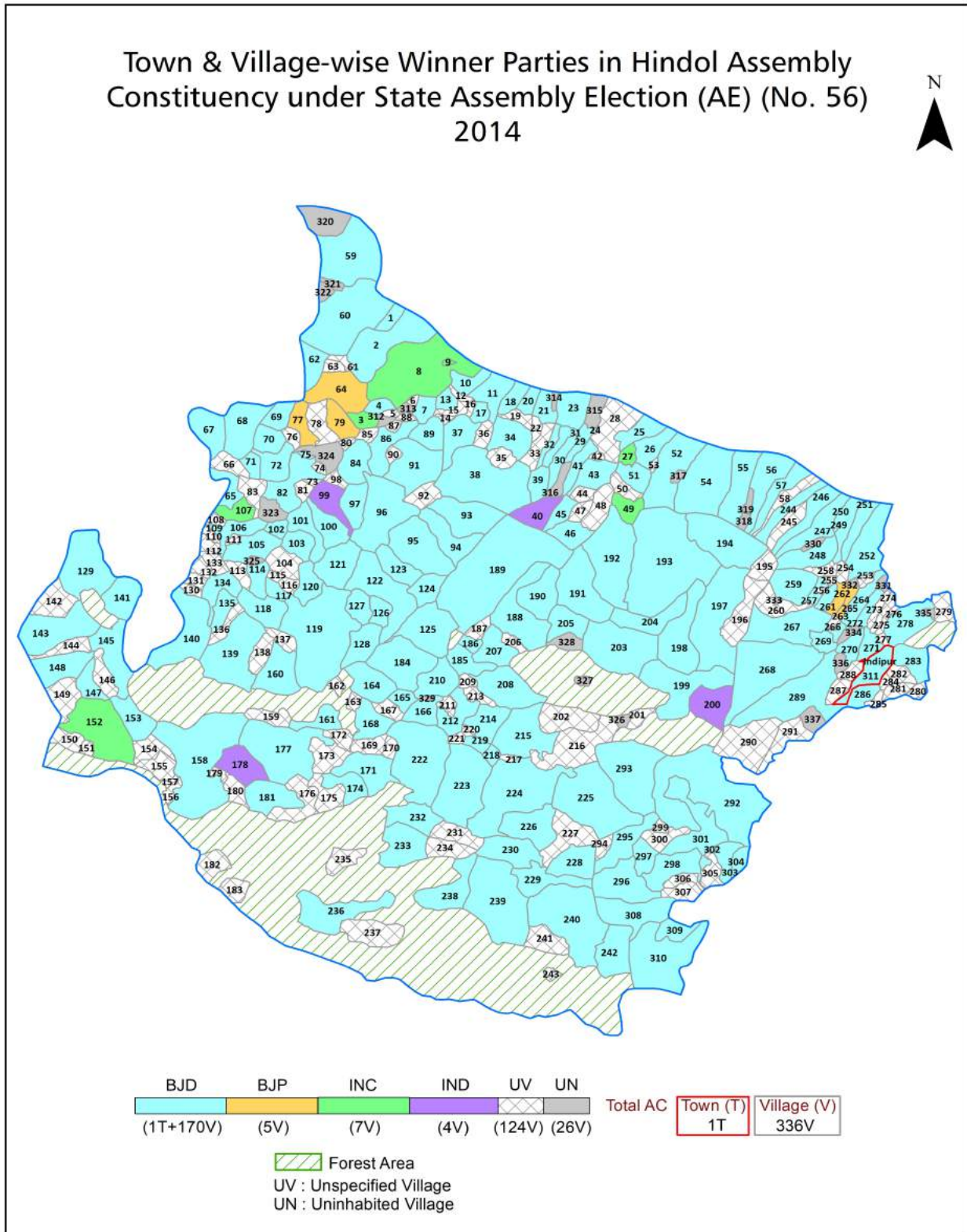
All rights reserved. No part of this book may be reproduced, stored in a retrieval system or transmitted in any form or by any means, mechanical photocopying, photographing, scanning, recording or otherwise without the prior written permission of the publisher. Please refer to Disclaimer at page no. 228 for the use of this publication.

Printed in India

# Contents

No.	Particulars	Page No.
	<b>Introduction</b>	
1	Assembly Constituency - (Vidhan Sabha) at a Glance   Features of Assembly as per Delimitation Commission of India (2008)	1-2
	<b>Location and Political Maps</b>	
2	Location Map   Boundaries of Assembly Constituency - (Vidhan Sabha in District   Boundaries of Assembly Constituency under Parliamentary Constituency - (Lok Sabha)   Town & Village-wise Winner Parties- 2024-PE, 2024-AE, 2019-PE, 2019-AE, 2014-PE, 2014-AE, 2009-PE and 2009-AE	3-11
	<b>Administrative Setup (2011)</b>	
3	District   Sub-district   Towns   Villages   Inhabited Villages   Uninhabited Villages   Village Panchayat   Intermediate Panchayat	12-27
	<b>Demographics (2011)</b>	
4	Population   Households   Rural/Urban Population   Towns and Villages by Population Size   Sex Ratio (Total & 0-6 Years)   Religious Population   Social Population   Literacy Rate	28-29
	<b>Electoral Features</b>	
5	Important Dates of Last Elections Held   Electors by Gender   Service Electors   Voters   Voters Turnout   Polling Stations & Average Number of Electors per Polling Station   Electors by Age Group   Present Elected Representatives	30-35
	<b>Historical Summary Election Results</b>	
6	Vote Share of Major Parties   Winning Margin (Number & Percentage   Polarity of Parties   Summary Result of Assembly Segment of Parliamentary Elections 2024, 2019, 2014, 2009, 2004 and 1999   Summary Result of Assembly Elections 2024, 2019, 2014, 2009, 2004, 2000, 1995, 1990, 1985, 1980, 1977 and 1974	36-55
	<b>Polling Station Level Election Results</b>	
7	Name and Number of Polling Station 2024-PE, 2024-AE, 2019-PE, 2019-AE, 2014-PE, 2014-AE, 2009-PE and 2009-AE   Polling Station-wise Electors, Voters & Voters Turnout 2024-PE, 2024-AE, 2019-PE, 2019-AE, 2014-PE, 2014-AE, 2009-PE and 2009-AE   Polling Station wise Elections Results 2024-PE, 2024-AE, 2019-PE, 2019-AE, 2014-PE, 2014-AE, 2009-PE and 2009-AE	56-207
	<b>Share of Assembly Constituency</b>	
8	Share of Assembly Constituency - (Vidhan Sabha) in State, District and Parliamentary Constituency - (Lok Sabha)	208
	<b>Socio-Economic Amenities (2011)</b>	
9	Access to Administrative Units   Agricultural, Manufacturing and Industrial Commodities   Demographic Indicators   Education   Health & Manpower   Drinking Water Supply   Sanitation   Entertainment and Recreations Infrastructure   Power   Food Allocation Distribution and Marketing of Agriculture Commodities Infrastructure   Transport and Road Infrastructure   Communication   Banking and Financial Services   Land Use   Irrigation Source	210-224
10	<b>Abbreviation &amp; Sources</b>	225-226
11	<b>Disclaimer</b>	228

Location & Political Map



## Administrative Setup

### List of Village Panchayat & Intermediate Panchayat (Block) Name - 2011

Village Name	Village Panchayat Name	Intermediate Panchayat Name
Alusinga	Hindol(Nizigarh)	Hindol
Amana	Sanjapada	Hindol
Amantapada	Ghatipiri	Odapada
Ambalundi	Jarada	Hindol
Ambithi	Kansara	Hindol
Ankarantipur	Siminoi	Odapada
Anlabeda	Buhalipal	Hindol
Artasantrakateni	Balaramprasad	Odapada
Asanabania	Kusupanga	Odapada
Asarada	Asarada	Hindol
Babandha	Babandha	Hindol
Bachhuribanka	Bangurusingha	Odapada
Badabahal	Giridhari Prasad	Hindol
Badabaulapur	Sadasivapur	Odapada
Badagola	Madhapur	Hindol
Badalo	Badalo	Odapada
Badamunda	Kadala	Hindol
Badibahal	Nuagaon	Hindol
Baghadharia	Nuabaga	Hindol
Bahalunda	Nuabaga	Hindol
Bahandei	Babandha	Hindol
Balabhadrapur	Khuntujhari	Odapada
Balaramprasad	Balaramprasad	Odapada
Balarampur	Balarampur	Odapada
Balasar	Hatura	Hindol
Balikiari	Jarada	Hindol
Balimi	Ranjagol	Hindol
Bampa	Bampa	Hindol
Bandhabhuin	Baunsapokhari	Hindol

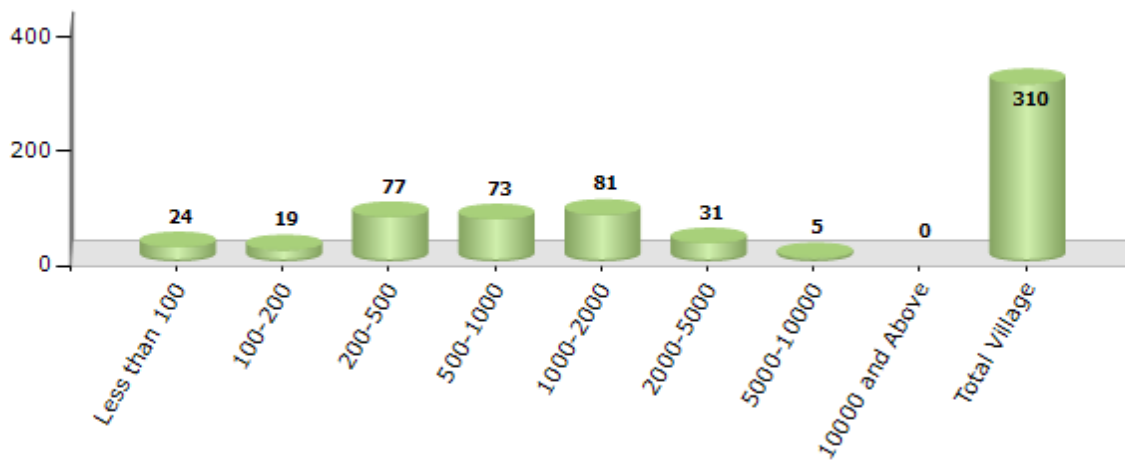
Contd....

Demographic

Number of Villages by Population Size - 2011

Less than 100	100-200	200-500	500-1000	1000-2000	2000-5000	5000-10000	10000 and Above	Total Village
24	19	77	73	81	31	5	0	310

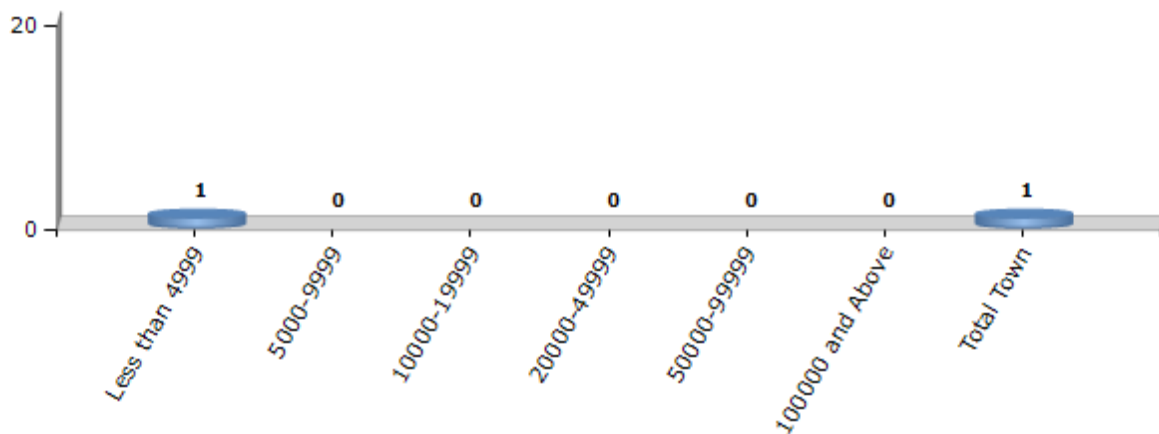
Number of Villages by Population Size - 2011



Number of Towns by Population Size - 2011

Less than 4999	5000-9999	10000-19999	20000-49999	50000-99999	100000 and Above	Total Town
1	0	0	0	0	0	1

Number of Towns by Population Size - 2011

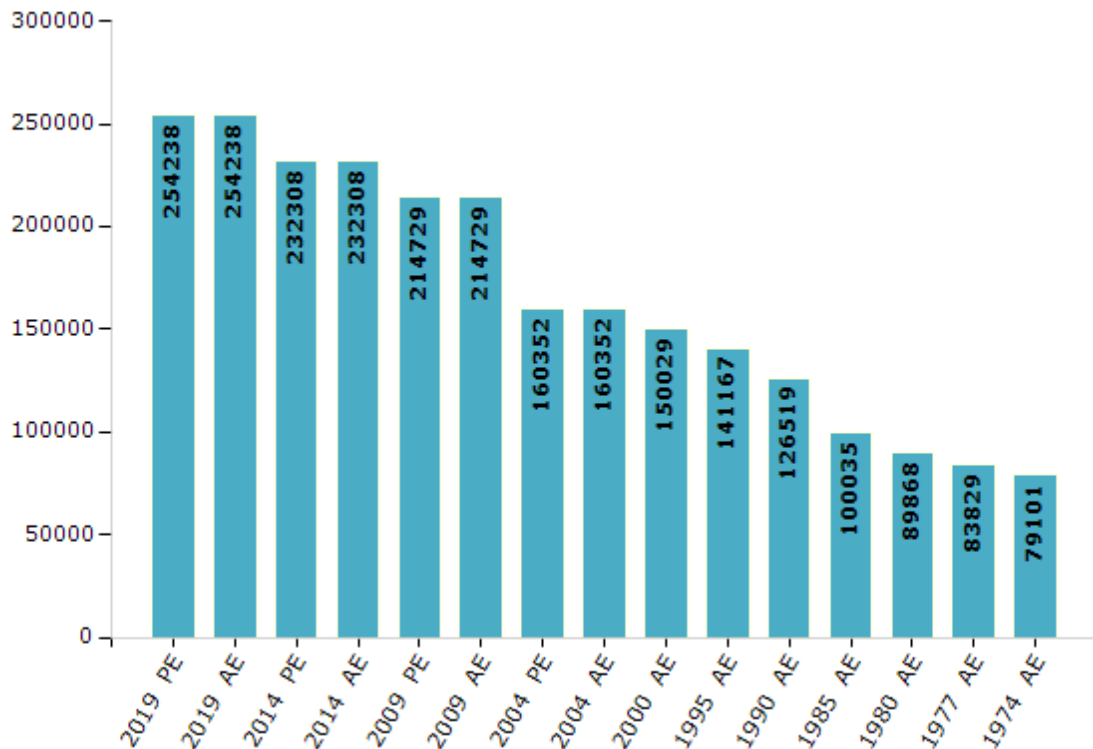


## Electoral Features

### Electors by Male & Female

Year	Male	Female	Others	Total	Year	Male	Female	Others	Total
2019 PE	133556	120661	21	254238	1990 AE	66631	59888	-	126519
2019 AE	133556	120661	21	254238	1985 AE	51676	48359	-	100035
2014 PE	123324	108963	21	232308	1980 AE	46199	43669	-	89868
2014 AE	123324	108963	21	232308	1977 AE	42723	41106	-	83829
2009 PE	112492	102237	-	214729	1974 AE	40276	38825	-	79101
2009 AE	112492	102237	-	214729	1971 AE	-	-	-	-
2004 PE	82803	77549	-	160352	1967 AE	-	-	-	-
2004 AE	82803	77549	-	160352	1961 AE	-	-	-	-
2000 AE	77046	72983	-	150029	1957 AE	-	-	-	-
1999 PE	-	-	-	-	1952 AE	-	-	-	-
1995 AE	72673	68494	-	141167					

Number of Electors



Note : AE : Assembly Election, PE : Assembly Segment of Parliamentary Election

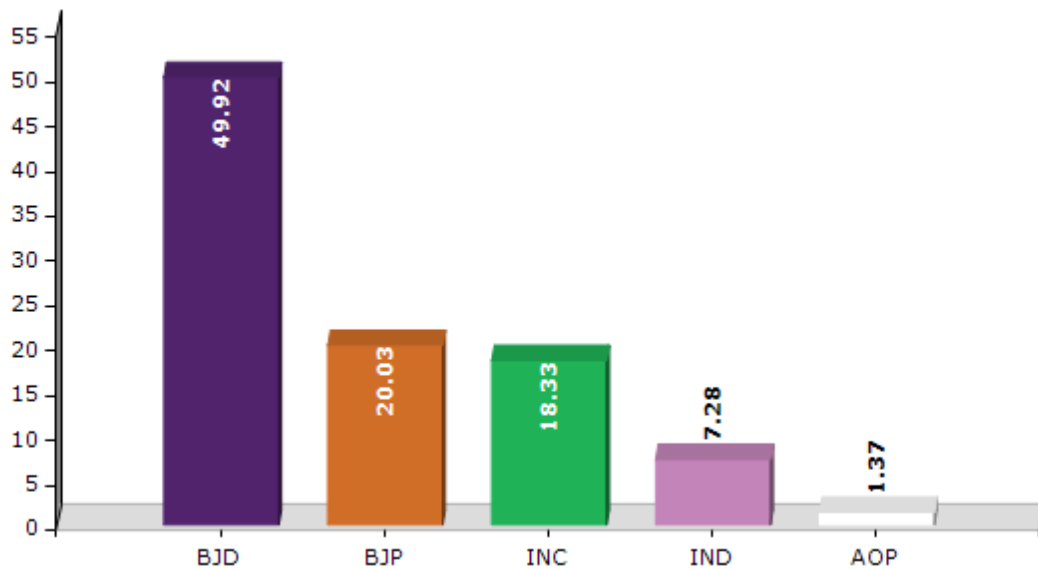


## Historical Summary Election Results

### Summary Result of Assembly Election - 2014

Candidate Name	Party	Votes	Votes %
Seemarani Nayak	BJD	84351	49.92
Laxmidhar Behera	BJP	33852	20.03
Namita Naik	INC	30978	18.33
Anjali Behera	IND	12304	7.28
Trinath Behera	AOP	2309	1.37
Sabita Naik	ABP	1120	0.66
Biranchi Narayan Nayak	AAP	827	0.49
Bijaya Kumar Behera	SKD	511	0.3
	NOTA	2722	1.61

Votes Percentage of Top Parties - 2014



## Polling Station Level Election Results

### Number and Name of Polling Stations (PS) (2019 AE)

Number of Polling Stations	Name of Polling Stations	Number of Polling Stations	Name of Polling Stations
1	Kamalanga-1	22	Charad Gadia
2	Kamalanga-2	23	Kochilamada
3	Kamalanga-3	24	Nuagan
4	Kamalanga-4	25	Sarapa
5	Mangalapur	26	Khaliberena
6	Mangalapur	27	Badibahal
7	Kusupanga-1	28	Sanjapada
8	Kusupanga-2	29	Amana
9	Kurunti-1	30	Nandeilo
10	Kurunti-2	31	Rakala
11	Manapur-1	32	Paika-Purunakot
12	Manapur-2	33	Jhadubereni
13	Sibapur	34	Brahman Purunakot
14	Khadagaprasad-1	35	Kankalu
15	Khadagaprasad-2	36	Beruanpal-1
16	Khadagaprasad -3	37	Beruanpal-2
17	Khadagaprasad Patana	38	Nimabahali
18	Surabhi	39	Jhadabandh
19	Ranjasinga	40	Tarkabeda
20	Ranjasinga	41	Kadala-1
21	Motanga	42	Kadala-2

Contd....

Polling Station Level Election Results

Polling Station-wise Votes Secured by Overall Top Five Parties in Hindol Assembly in Assembly Election (AE) under Dhenkanal Parliamentary Constituency in Odisha (2019)

Number of Polling Station	Winner - Simarani Nayak (BJD)	Runner-up - Ashok Kumar Nayak (BJP)	3rd - Trinath Behera (INC)	4th - Chandan Naik (BSP)	5th - Bijaya Kumar Behera (HND)	NOTA	Other	Total Votes Secured
36	361	398	105	18	5	13	6	906
37	457	312	37	19	5	18	10	858
38	420	452	53	8	7	3	3	946
39	459	479	38	4	5	9	10	1004
40	229	371	30	1	1	2	0	634
41	322	297	58	5	4	13	3	702
42	299	241	32	9	4	4	2	591
43	331	448	14	14	6	17	7	837
44	172	189	22	16	6	3	4	412
45	218	235	25	0	0	0	2	480
46	292	232	22	7	1	4	1	559
47	406	302	24	6	8	5	4	755
48	275	318	12	8	3	8	5	629
49	283	249	21	7	3	11	4	578
50	111	84	13	3	1	3	3	218
51	306	191	31	5	3	8	7	551
52	378	274	44	3	6	3	6	714
53	313	361	56	3	4	2	1	740
54	413	390	28	2	1	5	6	845
55	442	342	44	5	10	9	4	856
56	330	233	31	18	9	9	5	635
57	356	223	12	4	3	11	3	612
58	442	257	39	5	4	3	2	752
59	403	216	60	6	5	10	8	708
60	433	158	38	3	4	1	1	638
61	434	257	29	4	8	13	3	748
62	371	125	36	2	3	2	4	543
63	305	302	44	1	5	5	2	664
64	252	132	20	2	2	1	1	410
65	319	54	60	1	2	1	3	440
66	615	272	60	7	9	5	3	971
67	274	194	42	4	0	4	1	519
68	331	212	135	8	4	3	3	696
69	237	158	58	2	2	7	3	467
70	454	183	39	3	4	9	1	693

Contd....

## Polling Station Level Election Results

### Winner, Runner-up and 3rd Party Position & Winning Margin According to Polling Stations in Hindol Assembly in Assembly Election (AE) under Dhenkanal Parliamentary Constituency in Odisha (2019)

Polling Station Number	Winner Party	Winner Votes (%)	Runner-up Party	Runner-up Votes (%)	Winning Margin Votes (%)	Third Party	Third Party Votes (%)	Other Votes (%)
71	BJD	427 (48.25)	BJP	319 (36.05)	108 (12.2)	INC	104 (11.75)	35 (3.95)
72	BJP	370 (39.53)	BJD	369 (39.42)	1 (0.11)	INC	156 (16.67)	41 (4.38)
73	BJD	325 (52.42)	BJP	249 (40.16)	76 (12.26)	INC	40 (6.45)	6 (0.97)
74	BJP	488 (51.53)	BJD	352 (37.17)	136 (14.36)	INC	83 (8.76)	24 (2.53)
75	BJP	418 (59.54)	BJD	245 (34.9)	173 (24.64)	INC	12 (1.71)	27 (3.85)
76	BJP	350 (47.17)	BJD	337 (45.42)	13 (1.75)	INC	33 (4.45)	22 (2.96)
77	BJD	522 (64.93)	BJP	196 (24.38)	326 (40.55)	INC	43 (5.35)	43 (5.35)
78	BJP	450 (50.96)	BJD	405 (45.87)	45 (5.09)	INC	16 (1.81)	12 (1.36)
79	BJD	519 (55.81)	BJP	335 (36.02)	184 (19.79)	INC	26 (2.8)	50 (5.38)
80	BJP	428 (49.83)	BJD	349 (40.63)	79 (9.2)	INC	53 (6.17)	29 (3.38)
81	BJD	472 (58.2)	BJP	289 (35.64)	183 (22.56)	INC	35 (4.32)	15 (1.85)
82	BJD	439 (53.54)	BJP	318 (38.78)	121 (14.76)	INC	28 (3.41)	35 (4.27)
83	BJD	567 (58.63)	BJP	343 (35.47)	224 (23.16)	INC	44 (4.55)	13 (1.34)
84	BJD	403 (63.67)	BJP	205 (32.39)	198 (31.28)	INC	12 (1.9)	13 (2.05)
85	BJD	343 (58.93)	BJP	205 (35.22)	138 (23.71)	INC	24 (4.12)	10 (1.72)
86	BJD	214 (47.56)	BJP	193 (42.89)	21 (4.67)	INC	30 (6.67)	13 (2.89)
87	BJD	271 (52.83)	BJP	198 (38.6)	73 (14.23)	INC	15 (2.92)	29 (5.65)
88	BJD	386 (58.13)	BJP	207 (31.17)	179 (26.96)	INC	26 (3.92)	45 (6.78)
89	BJD	443 (51.57)	BJP	352 (40.98)	91 (10.59)	INC	35 (4.07)	29 (3.38)
90	BJP	188 (48.7)	BJD	170 (44.04)	18 (4.66)	BSP	11 (2.85)	17 (4.4)
91	BJP	476 (64.5)	BJD	218 (29.54)	258 (34.96)	INC	16 (2.17)	28 (3.79)
92	BJD	255 (51.72)	BJP	206 (41.78)	49 (9.94)	INC	19 (3.85)	13 (2.64)
93	BJD	214 (52.71)	BJP	169 (41.63)	45 (11.08)	INC	15 (3.69)	8 (1.97)
94	BJP	336 (48.28)	BJD	305 (43.82)	31 (4.46)	INC	29 (4.17)	26 (3.74)
95	BJP	459 (75.49)	BJD	84 (13.82)	375 (61.67)	INC	30 (4.93)	35 (5.76)
96	BJP	620 (87.32)	BJD	57 (8.03)	563 (79.29)	INC	25 (3.52)	8 (1.13)
97	BJP	283 (59.58)	BJD	159 (33.47)	124 (26.11)	INC	27 (5.68)	6 (1.26)
98	BJP	278 (51.39)	BJD	216 (39.93)	62 (11.46)	INC	23 (4.25)	24 (4.44)
99	BJP	400 (56.66)	BJD	201 (28.47)	199 (28.19)	INC	66 (9.35)	39 (5.52)
100	BJP	344 (49.71)	BJD	252 (36.42)	92 (13.29)	INC	45 (6.5)	51 (7.37)
101	BJP	418 (50.85)	BJD	333 (40.51)	85 (10.34)	INC	37 (4.5)	34 (4.14)
102	BJD	487 (53.87)	BJP	357 (39.49)	130 (14.38)	INC	29 (3.21)	31 (3.43)
103	BJD	535 (61.35)	BJP	283 (32.45)	252 (28.9)	INC	24 (2.75)	30 (3.44)
104	BJD	617 (69.64)	BJP	202 (22.8)	415 (46.84)	INC	63 (7.11)	4 (0.45)
105	BJD	571 (61.33)	BJP	274 (29.43)	297 (31.9)	INC	68 (7.3)	18 (1.93)

Contd....

## Socio-Economic Amenities - Rural

### Access to Education Facilities

Particulars	Number of Villages (% of Population)				
	Available	Not Available	If Not Available (Distance of Nearest Facility)		
			A	B	C
Govt. Primary School	268 (98)	42 (2)	40 (2)	2 (0)	0 (0)
Private Primary School	13 (7)	297 (93)	0 (0)	0 (0)	0 (0)
Govt. Middle School	153 (77)	157 (23)	77 (14)	74 (8)	3 (0)
Private Middle School	14 (7)	296 (93)	0 (0)	0 (0)	0 (0)
Govt. Secondary School	81 (51)	229 (49)	142 (30)	27 (4)	0 (0)
Private Secondary School	10 (6)	300 (94)	39 (8)	11 (2)	0 (0)
Govt. Senior Secondary School	11 (11)	299 (89)	25 (10)	21 (5)	66 (17)
Private Senior Secondary School	7 (4)	303 (96)	39 (9)	75 (27)	66 (17)
Govt. Arts and Science Degree College	5 (8)	305 (92)	20 (8)	34 (10)	75 (19)
Private Arts and Science Degree College	5 (3)	305 (97)	15 (5)	71 (24)	85 (23)
Govt. Engineering College	1 (0)	309 (100)	0 (0)	0 (0)	0 (0)
Private Engineering College	2 (2)	308 (98)	11 (4)	77 (25)	220 (69)
Govt. Medicine College	0 (0)	310 (100)	1 (0)	2 (0)	306 (99)
Private Medicine College	0 (0)	310 (100)	0 (0)	0 (0)	0 (0)
Govt. Management Institute	0 (0)	310 (100)	0 (0)	0 (0)	260 (87)
Private Management Institute	0 (0)	310 (100)	0 (0)	4 (1)	46 (12)
Govt. Polytechnic	2 (0)	308 (100)	0 (0)	8 (2)	226 (75)
Private Polytechnic	0 (0)	310 (100)	1 (1)	3 (0)	26 (8)
Govt. Vocational Training School/ITI	2 (0)	308 (100)	1 (0)	8 (2)	92 (31)
Private Vocational Training School/ITI	7 (3)	303 (97)	22 (6)	39 (15)	107 (31)
Govt. Non Formal Training Centre	0 (0)	310 (100)	1 (0)	7 (2)	201 (65)
Private Non Formal Training Centre	0 (0)	310 (100)	3 (1)	2 (0)	14 (5)
Govt. School For Disabled	0 (0)	310 (100)	0 (0)	4 (1)	158 (53)
Private School For Disabled	0 (0)	310 (100)	0 (0)	4 (1)	88 (25)
Government Others	0 (0)	310 (100)	0 (0)	0 (0)	4 (0)
Private Others	0 (0)	310 (100)	0 (0)	1 (0)	2 (0)

Note : Distance A : Less than 5 km; B : Between 5-10 km; C : 10+ km.; Source : Data Analysis is based on 2011 Census.

## DISCLAIMER

The Terms of Use and Disclaimer of Datanet India Private Limited (hereinafter referred to as "Datanet") for use of this analysis report of **Hindol Assembly Constituency (Hindol Vidhan Sabha)** :-

1. **Assembly Factbook™** is a Registered Trade Mark owned by Datanet.
2. All the maps are sketched and graphical representation only and have not been drawn to the scale and also not to represent the actual geographical area or boundary of the unit.
3. The data for the aforesaid analysis is based on authentic sources and has been culled from the various publications of Census, CSO and NSSO for district and block level data, various central and state government departments, Central & State Elections Commissions and the concerned Returning Officers' releases, Electoral Rolls, Election results and allied publications, internal assessment, surveys, estimates and analysis. Therefore, certain adjustment of data at micro level may have been done to arrive closer to the macro data.
4. Data have been provided on an "As Is" and "As AVAILABLE" basis
5. The colours shown in the maps or diagram and charts of a particular party, alliance or AC are indicative and do not represent them.
6. This publication which includes maps, sheets, graphs and data would be the property under copyright of Datanet only. The user may use these for its internal study, analysis and research purposes. It's public display, re-selling or any commercial uses by the user are not allowed.
7. Datanet has taken due care and caution in compilation and processing of data and allied information, but does not guarantee the accuracy, adequacy or completeness of any information/analysis and will be not responsible for any errors or omissions or for the results obtained from the use of such information/analysis.
8. All the contents for the publication have been culled from various authentic sources and Datanet reasonably believes such sources to be reliable, but does not make any representations, express or implied as to the accuracy or fitness of use of such information. The information or contents of the information/analysis do not constitute advice and should not be relied upon in making (or refraining from making) any decision. Any reliance placed upon the information provided by Datanet is the sole responsibility and strictly at the user's risk.
9. In no event will Datanet be liable for any damages (including, without limitation, damages for loss of business projects, or loss of profits) arising in contract, tort or otherwise from the use of or inability to use any of its contents, or from any action taken (or refrained from being taken) as a result of using the analysis or any of its contents. Datanet its directors, owners, editors, officials, employees, distributor and agents or any associate will not be liable for any errors in the information contained or any consequences arising from the use of the contents of the provided information/analysis.
10. If any provision of these terms and conditions is held invalid or illegal or unenforceable for any reason by any court of competent jurisdiction, such provision shall be severed and the remainder of provisions of the terms and conditions shall continue in full force and effect as if the Term of Use had been executed with the invalid, illegal or unenforceable provision eliminated.
11. If there are any discrepancies in the information provided, please bring it to attention of Datanet for suitable rectification measures.

**Buy Online This Complete Book At**  
**Datanet India eBooks Store**

[www.indiastatpublications.com](http://www.indiastatpublications.com)

or go directly at

[http://www.indiastatpublications.com/  
Assembly\\_factbook/Odisha/Dhenkanal/ Hindol](http://www.indiastatpublications.com/Assembly_factbook/Odisha/Dhenkanal/Hindol)

 **india**stat**elections**

ISBN : 978-93-5313-242-2



9 789353 132422