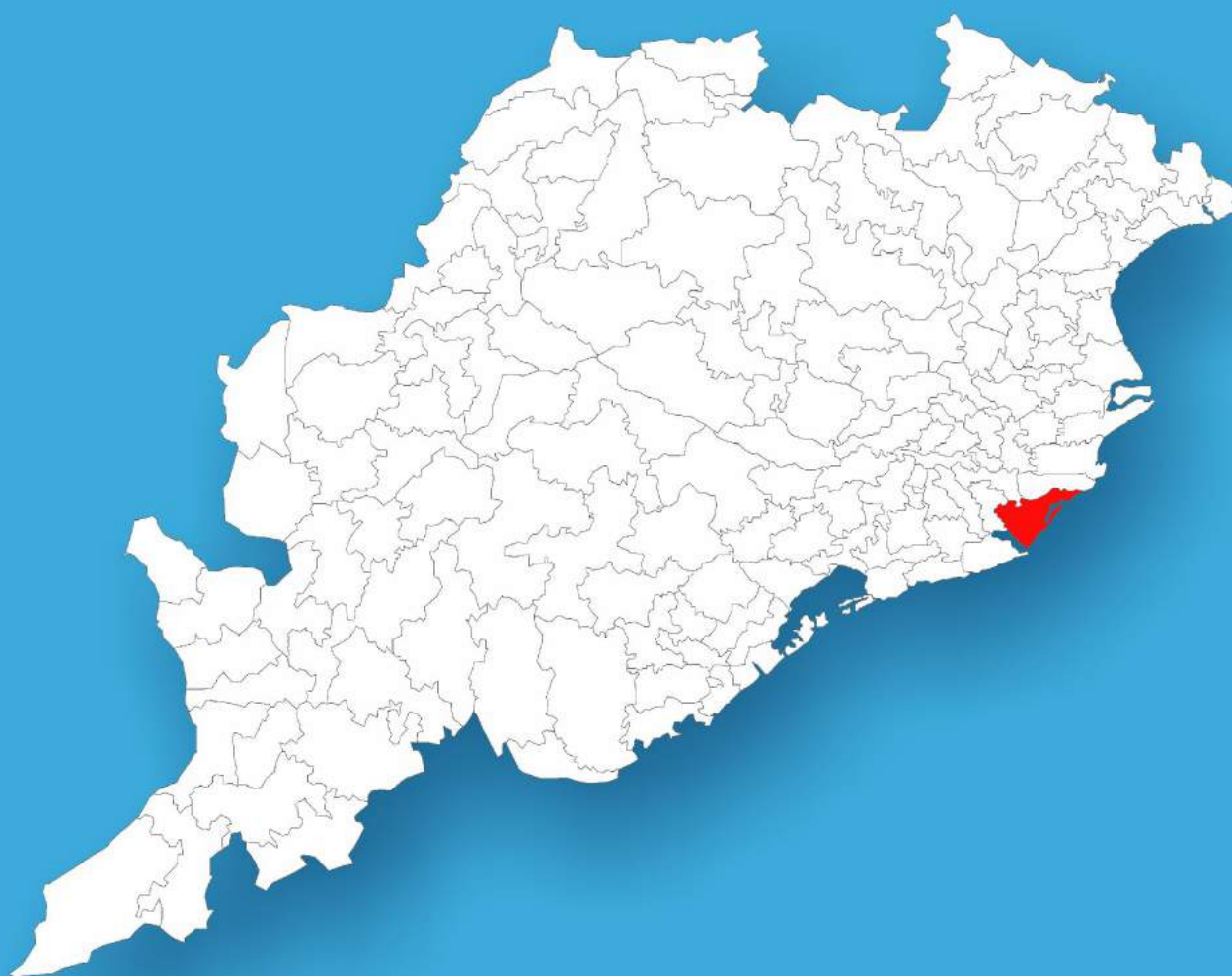




Odisha

# Assembly Factbook™

Balikuda-Ersama Assembly Constituency



Key Electoral Data of Balikuda-Ersama  
Assembly Constituency (Vidhan Sabha)



**indiastat**publications

Odisha

# **Assembly Factbook™**

Balikuda-Ersama Assembly Constituency



Balikuda-Ersama Vidhan Sabha

## **Editor & Director**

Dr. R.K. Thukral

## **Research Editor**

Dr. Shafeeq Rahman

## **Compiled, Researched and Published by Datanet India Pvt. Ltd.**

D-100, 1st Floor,

Okhla Industrial Area, Phase-I,  
New Delhi- 110020.

Ph.: 91-11- 43580781-84

Email : support@indiastatpublications.com

Website : www.indiastatelections.com

## **Online Book Store :**

www.indiastatpublications.com

**Report No. :** AFB/OD-103-0123

**ISBN :** 978-93-5313-213-2

**First Edition :** January, 2018

**Sixth Updated Edition :** January, 2023

**Price :** Rs. 11500/-

US\$ 310

**© Datanet India Pvt. Ltd.**

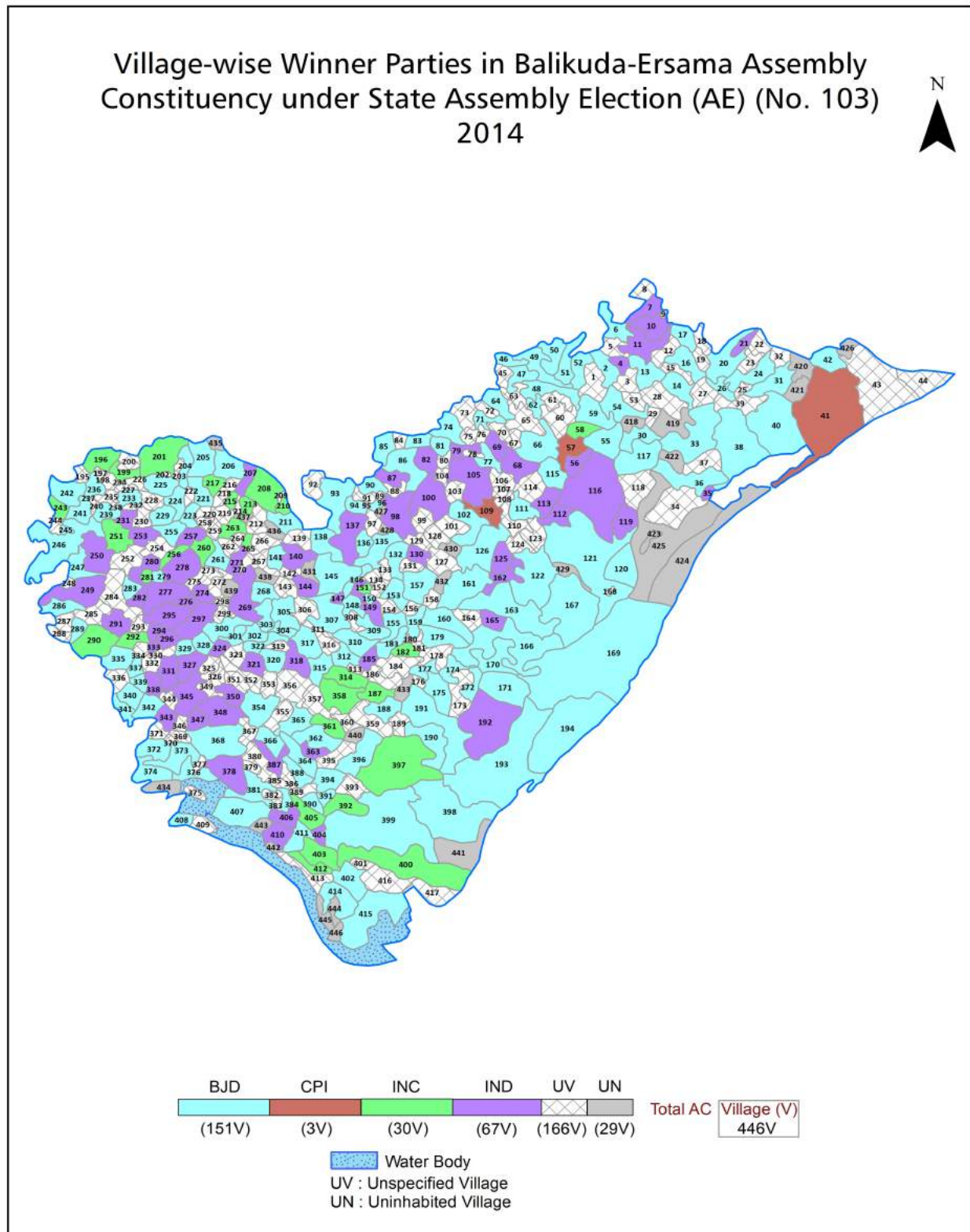
All rights reserved. No part of this book may be reproduced, stored in a retrieval system or transmitted in any form or by any means, mechanical photocopying, photographing, scanning, recording or otherwise without the prior written permission of the publisher. Please refer to Disclaimer at page no. 272 for the use of this publication.

Printed in India

No.	Particulars	Page No.
	<b>Introduction</b>	
1	Assembly Constituency - (Vidhan Sabha) at a Glance   Features of Assembly as per Delimitation Commission of India (2008)	1-2
	<b>Location and Political Maps</b>	
2	Location Map   Boundaries of Assembly Constituency - (Vidhan Sabha) in District   Boundaries of Assembly Constituency under Parliamentary Constituency - (Lok Sabha)   Village-wise Winner Parties- 2019-PE, 2019-AE, 2014-PE, 2014-AE, 2009-PE and 2009-AE	3-11
	<b>Administrative Setup (2011)</b>	
3	District   Sub-district   Towns   Villages   Inhabited Villages   Uninhabited Villages   Village Panchayat   Intermediate Panchayat	12-32
	<b>Demographics (2011)</b>	
4	Population   Households   Rural/Urban Population   Villages by Population Size   Sex Ratio (Total & 0-6 Years)   Religious Population   Social Population   Literacy Rate	33-34
	<b>Electoral Features</b>	
5	Important Dates of Last Elections Held   Electors by Gender   Service Electors   Voters   Voters Turnout   Polling Stations & Average Number of Electors per Polling Station   Electors by Age Group   Present Elected Representatives	35-40
	<b>Historical Summary Election Results</b>	
6	Vote Share of Major Parties   Winning Margin (Number & Percentage)   Polarity of Parties   Summary Result of Assembly Segment of Parliamentary Elections 2019, 2014, 2009, 2004 and 1999   Summary Result of Assembly Elections 2019, 2014, 2009, 2004, 2000, 1995, 1990, 1985, 1980, 1977, 1974, 1971, 1967, 1961, 1957 and 1952	41-65
	<b>Polling Station Level Election Results</b>	
7	Name and Number of Polling Station 2019-PE, 2019-AE, 2014-PE, 2014-AE, 2009-PE and 2009-AE   Polling Station-wise Electors, Voters & Voters Turnout 2019-PE, 2019-AE, 2014-PE, 2014-AE, 2009-PE and 2009-AE   Polling Station wise Elections Results 2019-PE, 2019-AE, 2014-PE, 2014-AE, 2009-PE and 2009-AE	66-251
	<b>Share of Assembly Constituency</b>	
8	Share of Assembly Constituency - (Vidhan Sabha) in State, District and Parliamentary Constituency - (Lok Sabha)	252
	<b>Socio-Economic Amenities (2011)</b>	
9	Access to Administrative Units   Agricultural, Manufacturing and Industrial Commodities   Demographic Indicators   Education   Health & Manpower   Drinking Water Supply   Sanitation   Entertainment and Recreations Infrastructure   Power   Food Allocation Distribution and Marketing of Agriculture Commodities Infrastructure   Transport and Road Infrastructure   Communication   Banking and Financial Services   Land Use   Irrigation Source	254-268
10	<b>Abbreviation &amp; Sources</b>	269-270
11	<b>Disclaimer</b>	272



## Location & Political Map



## Administrative Setup

### List of Village Panchayat & Intermediate Panchayat (Block) Name - 2011

Village Name	Village Panchayat Name	Intermediate Panchayat Name
Abhayachandapur	Dhinkia	Ersama
Achhutadaspur	Japa	Ersama
Achhutapur	Sangrampur	Balikuda
Adhang	Adhanga	Balikuda
Alabola	Alabol	Balikuda
Alanavasa	Paida	Ersama
Alavar	Alavar	Balikuda
Aliha	Alavar	Balikuda
Alijanga	Kalio	Balikuda
Alikana	Alavar	Balikuda
Alikanta	Thailo	Balikuda
Alligarh	Balitutha	Ersama
Ambasal	Ambasala	Balikuda
Ambiki	Ambiki	Ersama
Anantpur	Anantapur	Balikuda
Angira	Balikuda	Balikuda
Anianka	Osakana	Balikuda
Anko	Sangrampur	Balikuda
Apandara	Sompur	Ersama
Apandara	Apandara	Balikuda
Arada	Krushnachandrapur	Ersama
Arilo	Baharana	Balikuda
Arilo	Arilo	Balikuda
Arilo	Thailo	Balikuda
Arjunkula	Chatua	Ersama
Asarana	Krushnachandrapur	Ersama
Asarana	Pokhariapada	Ersama
Asarana	Mulugan	Balikuda
Ashilo	Machhagaon	Balikuda

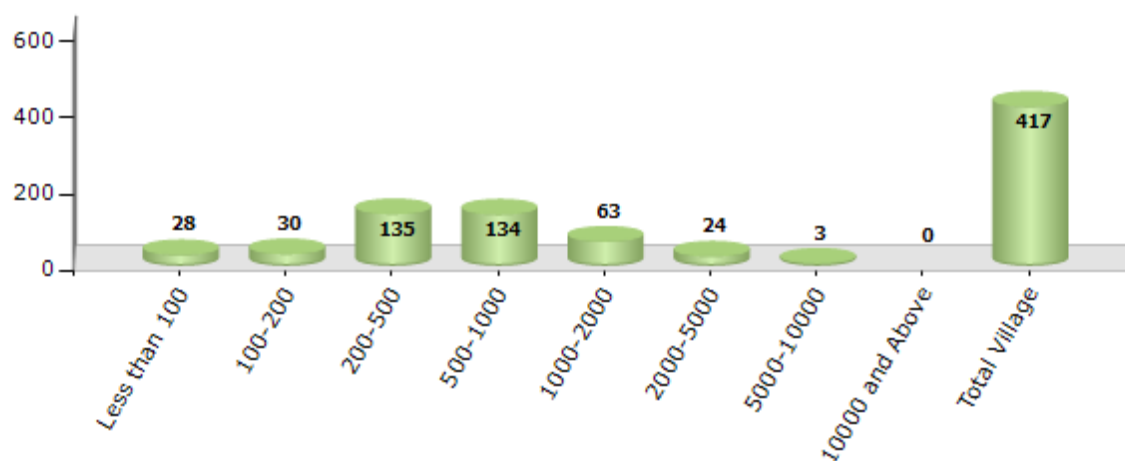
Contd....

## Demographic

### Number of Villages by Population Size - 2011

Less than 100	100-200	200-500	500-1000	1000-2000	2000-5000	5000-10000	10000 and Above	Total Village
28	30	135	134	63	24	3	0	417

Number of Villages by Population Size - 2011



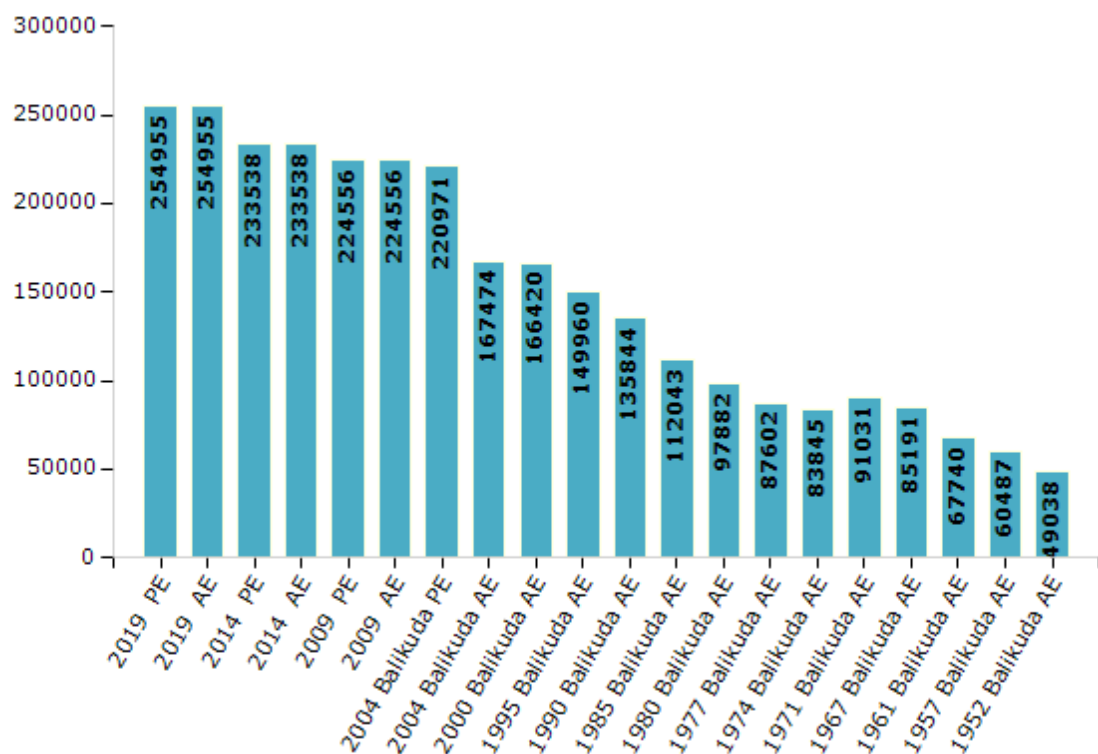
## Electoral Features

### Electors by Male & Female

Year	Male	Female	Others	Total
2019 PE	134497	120422	36	254955
2019 AE	134497	120422	36	254955
2014 PE	124704	108822	12	233538
2014 AE	124704	108822	12	233538
2009 PE	118059	106497	-	224556
2009 AE	118059	106497	-	224556
2004 Balikuda PE	117219	103752	-	220971
2004 Balikuda AE	87038	80436	-	167474
2000 Balikuda AE	84285	82135	-	166420
1999 Balikuda PE	-	-	-	-
1995 Balikuda AE	79008	70952	-	149960

Year	Male	Female	Others	Total
1990 Balikuda AE	78311	57533	-	135844
1985 Balikuda AE	66155	45888	-	112043
1980 Balikuda AE	52521	45361	-	97882
1977 Balikuda AE	45888	41714	-	87602
1974 Balikuda AE	43573	40272	-	83845
1971 Balikuda AE	47289	43742	-	91031
1967 Balikuda AE	85191	0	-	85191
1961 Balikuda AE	67740	0	-	67740
1957 Balikuda AE	60487	0	-	60487
1952 Balikuda AE	-	-	-	49038

Number of Electors



Note : AE : Assembly Election, PE : Assembly Segment of Parliamentary Election

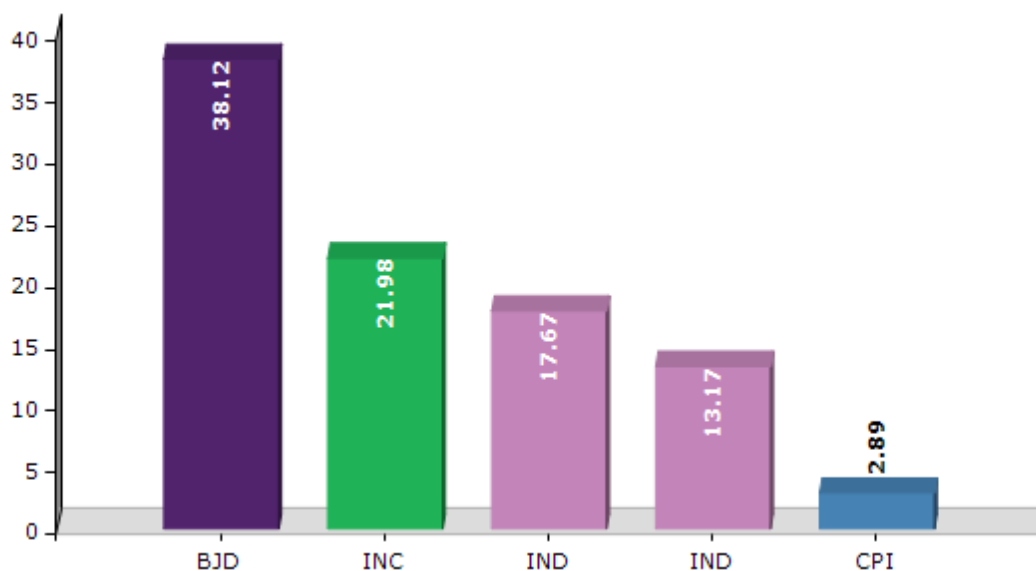


## Historical Summary Election Results

### Summary Result of Assembly Election - 2014

Candidate Name	Party	Votes	Votes %
Prasanta Kumar Muduli	BJD	69335	38.12
Lalatendu Mohapatra	INC	39981	21.98
Raghunandan Das	IND	32135	17.67
Sarada Prasan Jena	IND	23948	13.17
Abhijit Sahoo	CPI	5260	2.89
Khired Kumar Swain	KS	5186	2.85
Chitta Ranjan Kansa	BJP	3724	2.05
Bibhuti Bhusan Majhi	BSP	987	0.54
Akshya Kumar Swain	AAP	685	0.38
	NOTA	654	0.36

Votes Percentage of Top Parties - 2014



## Polling Station Level Election Results

### Number and Name of Polling Stations (PS) (2019 AE)

Number of Polling Stations	Name of Polling Stations	Number of Polling Stations	Name of Polling Stations
1	Arilo	22	Podana
2	Sadeipur	23	Baharana
3	Era	24	Katijanga
4	Malapur	25	Tainkul
5	Krushnadasapur	26	Garia
6	Chasapada	27	Sirailo
7	Chasapada	28	Singharsahi
8	Krushnadasapur-2	29	Singharsahi
9	Khankarpur	30	Paيدا
10	Rayarapur	31	Kaithol
11	Singharapur	32	Alanabhash
12	Mulugan-1	33	Raijanga
13	Mulugan-2	34	Bhiranga-1
14	Karamanga	35	Bhiranga-2
15	Singiri	36	Krushnachandrapur
16	Asarana	37	Atimati
17	Jaitalanga	38	Nimol
18	Tandikul	39	Kothi
19	Basantapur	40	Ornal
20	Sarana	41	Bharisola
21	Digoda	42	Oreisal

Contd....

## Polling Station Level Election Results

### Polling Station-wise Votes Secured by Overall Top Five Parties in Balikuda-Ersama Assembly in Assembly Election (AE) under Jagatsinghpur Parliamentary Constituency in Odisha (2019)

Number of Polling Station	Winner - Raghunandan Das (BJD)	Runner-up - Lalatendu Mohapatra (INC)	3rd - Damodar Rout (BJP)	4th - Manas Ranjan Kar (IND)	5th - Bikram Kumar Swain (NCP)	NOTA	Other	Total Votes Secured
36	179	63	155	0	1	4	0	402
37	195	113	97	1	1	1	0	408
38	412	132	282	1	2	4	1	834
39	374	79	246	5	3	6	4	717
40	390	208	141	0	0	0	1	740
41	127	132	39	0	0	0	2	300
42	155	74	114	1	3	2	1	350
43	138	84	43	1	0	1	0	267
44	368	371	171	3	2	2	4	921
45	129	147	63	0	0	4	1	344
46	409	90	338	3	2	1	4	847
47	216	86	111	0	0	0	0	413
48	367	199	256	0	1	3	5	831
49	440	149	271	6	10	3	4	883
50	173	45	110	0	1	0	4	333
51	438	167	208	2	3	4	7	829
52	176	73	45	0	0	1	0	295
53	417	190	113	1	2	1	2	726
54	303	152	116	1	0	0	1	573
55	310	167	139	2	0	5	1	624
56	287	127	143	1	4	3	2	567
57	224	109	80	1	0	1	0	415
58	309	101	139	2	0	2	0	553
59	309	131	127	2	0	9	2	580
60	336	123	156	6	2	0	3	626
61	577	109	218	7	0	2	5	918
62	492	93	107	16	2	1	3	714
63	337	46	140	4	0	1	1	529
64	505	68	126	4	0	4	5	712
65	199	113	52	0	2	1	0	367
66	511	47	251	18	1	3	8	839
67	353	82	193	23	2	0	6	659
68	916	146	69	4	1	2	9	1147
69	563	43	66	4	1	5	3	685
70	436	84	121	4	0	1	4	650

Contd....

## Polling Station Level Election Results

**Winner, Runner-up and 3rd Party Position & Winning Margin According to Polling Stations in Balikuda-Ersama Assembly in Assembly Election (AE) under Jagatsinghpur Parliamentary Constituency in Odisha (2019)**

Polling Station Number	Winner Party	Winner Votes (%)	Runner-up Party	Runner-up Votes (%)	Winning Margin Votes (%)	Third Party	Third Party Votes (%)	Other Votes (%)
71	BJD	330 (58.41)	BJP	119 (21.06)	211 (37.35)	INC	96 (16.99)	20 (3.54)
72	BJD	508 (75.48)	BJP	97 (14.41)	411 (61.07)	INC	52 (7.73)	16 (2.38)
73	BJD	374 (66.19)	BJP	102 (18.05)	272 (48.14)	INC	82 (14.51)	7 (1.24)
74	BJD	507 (61.98)	INC	159 (19.44)	348 (42.54)	BJP	135 (16.5)	17 (2.08)
75	BJD	528 (64.23)	BJP	149 (18.13)	379 (46.1)	INC	140 (17.03)	5 (0.61)
76	BJD	281 (40.55)	INC	268 (38.67)	13 (1.88)	BJP	140 (20.2)	4 (0.58)
77	BJD	319 (49.3)	INC	168 (25.97)	151 (23.33)	BJP	144 (22.26)	16 (2.47)
78	BJD	245 (40.9)	INC	188 (31.39)	57 (9.51)	BJP	151 (25.21)	15 (2.5)
79	BJD	248 (48.25)	BJP	137 (26.65)	111 (21.6)	INC	121 (23.54)	8 (1.56)
80	BJD	472 (47.63)	INC	254 (25.63)	218 (22)	BJP	254 (25.63)	11 (1.11)
81	BJD	385 (51.13)	INC	176 (23.37)	209 (27.76)	BJP	149 (19.79)	43 (5.71)
82	BJD	476 (58.33)	BJP	165 (20.22)	311 (38.11)	INC	127 (15.56)	48 (5.88)
83	BJD	361 (56.58)	INC	178 (27.9)	183 (28.68)	BJP	89 (13.95)	10 (1.57)
84	BJD	417 (47.71)	INC	253 (28.95)	164 (18.76)	BJP	180 (20.59)	24 (2.75)
85	BJD	351 (42.96)	INC	287 (35.13)	64 (7.83)	BJP	175 (21.42)	4 (0.49)
86	INC	301 (39.61)	BJD	257 (33.82)	44 (5.79)	BJP	198 (26.05)	4 (0.53)
87	BJD	173 (45.53)	INC	129 (33.95)	44 (11.58)	BJP	76 (20)	2 (0.53)
88	INC	165 (45.21)	BJD	150 (41.1)	15 (4.11)	BJP	50 (13.7)	0 (0)
89	BJD	260 (40.56)	INC	191 (29.8)	69 (10.76)	BJP	185 (28.86)	5 (0.78)
90	BJD	195 (55.4)	BJP	88 (25)	107 (30.4)	INC	69 (19.6)	0 (0)
91	BJD	379 (62.64)	BJP	155 (25.62)	224 (37.02)	INC	64 (10.58)	7 (1.16)
92	BJD	380 (63.97)	INC	117 (19.7)	263 (44.27)	BJP	94 (15.82)	3 (0.51)
93	BJD	347 (47.15)	BJP	269 (36.55)	78 (10.6)	INC	118 (16.03)	2 (0.27)
94	BJD	411 (48.41)	INC	271 (31.92)	140 (16.49)	BJP	142 (16.73)	25 (2.94)
95	BJD	180 (45.23)	BJP	137 (34.42)	43 (10.81)	INC	79 (19.85)	2 (0.5)
96	INC	265 (38.8)	BJD	257 (37.63)	8 (1.17)	BJP	148 (21.67)	13 (1.9)
97	BJD	379 (67.56)	BJP	98 (17.47)	281 (50.09)	INC	76 (13.55)	8 (1.43)
98	BJD	291 (54.91)	BJP	144 (27.17)	147 (27.74)	INC	85 (16.04)	10 (1.89)
99	BJP	390 (41.58)	BJD	349 (37.21)	41 (4.37)	INC	193 (20.58)	6 (0.64)
100	BJD	388 (42.36)	BJP	377 (41.16)	11 (1.2)	INC	139 (15.17)	12 (1.31)
101	INC	210 (36.91)	BJP	184 (32.34)	26 (4.57)	BJD	171 (30.05)	4 (0.7)
102	BJD	385 (57.63)	BJP	170 (25.45)	215 (32.18)	INC	110 (16.47)	3 (0.45)
103	BJD	171 (52.78)	INC	82 (25.31)	89 (27.47)	BJP	68 (20.99)	3 (0.93)
104	BJD	392 (56.73)	BJP	181 (26.19)	211 (30.54)	INC	111 (16.06)	7 (1.01)
105	BJD	316 (48.32)	BJP	184 (28.13)	132 (20.19)	INC	150 (22.94)	4 (0.61)

Contd....

## Socio-Economic Amenities - Rural

## Access to Education Facilities

Particulars	Number of Villages (% of Population)				
	Available	Not Available	If Not Available (Distance of Nearest Facility)		
			A	B	C
Govt. Primary School	330 (93)	87 (7)	81 (7)	4 (0)	1 (0)
Private Primary School	74 (32)	343 (68)	0 (0)	0 (0)	0 (0)
Govt. Middle School	158 (61)	259 (39)	99 (14)	124 (19)	26 (4)
Private Middle School	51 (22)	366 (78)	1 (0)	0 (0)	0 (0)
Govt. Secondary School	80 (37)	337 (63)	185 (33)	48 (11)	0 (0)
Private Secondary School	28 (15)	389 (85)	88 (16)	11 (2)	0 (0)
Govt. Senior Secondary School	9 (3)	408 (97)	28 (8)	93 (18)	156 (39)
Private Senior Secondary School	9 (3)	408 (97)	39 (7)	47 (11)	41 (13)
Govt. Arts and Science Degree College	7 (2)	410 (98)	19 (6)	124 (24)	98 (26)
Private Arts and Science Degree College	5 (2)	412 (98)	31 (6)	61 (12)	76 (24)
Govt. Engineering College	0 (0)	417 (100)	0 (0)	0 (0)	0 (0)
Private Engineering College	0 (0)	417 (100)	7 (1)	23 (5)	387 (93)
Govt. Medicine College	0 (0)	417 (100)	0 (0)	0 (0)	415 (100)
Private Medicine College	0 (0)	417 (100)	0 (0)	0 (0)	0 (0)
Govt. Management Institute	0 (0)	417 (100)	0 (0)	0 (0)	417 (100)
Private Management Institute	0 (0)	417 (100)	0 (0)	0 (0)	0 (0)
Govt. Polytechnic	0 (0)	417 (100)	0 (0)	1 (0)	283 (67)
Private Polytechnic	0 (0)	417 (100)	0 (0)	0 (0)	1 (1)
Govt. Vocational Training School/ITI	1 (1)	416 (99)	1 (0)	3 (0)	6 (1)
Private Vocational Training School/ITI	2 (1)	415 (99)	44 (10)	56 (12)	212 (54)
Govt. Non Formal Training Centre	1 (2)	416 (98)	0 (0)	9 (3)	53 (12)
Private Non Formal Training Centre	0 (0)	417 (100)	1 (0)	0 (0)	2 (0)
Govt. School For Disabled	0 (0)	417 (100)	0 (0)	8 (1)	167 (39)
Private School For Disabled	0 (0)	417 (100)	2 (0)	12 (4)	34 (9)
Government Others	7 (2)	410 (98)	0 (0)	0 (0)	1 (0)
Private Others	13 (2)	404 (98)	0 (0)	0 (0)	1 (0)

Note : Distance A : Less than 5 km; B : Between 5-10 km; C : 10+ km.; Source : Data Analysis is based on 2011 Census.

## DISCLAIMER

The Terms of Use and Disclaimer of Datanet India Private Limited (hereinafter referred to as "Datanet") for use of this analysis report of **Balikuda-Ersama Assembly Constituency (Balikuda-Ersama Vidhan Sabha) :-**

1. **Assembly Factbook™** is a Registered Trade Mark owned by Datanet.
2. All the maps are sketched and graphical representation only and have not been drawn to the scale and also not to represent the actual geographical area or boundary of the unit.
3. The data for the aforesaid analysis is based on authentic sources and has been culled from the various publications of Census, CSO and NSSO for district and block level data, various central and state government departments, Central & State Elections Commissions and the concerned Returning Officers' releases, Electoral Rolls, Election results and allied publications, internal assessment, surveys, estimates and analysis. Therefore, certain adjustment of data at micro level may have been done to arrive closer to the macro data.
4. Data have been provided on an "As Is" and "As AVAILABLE" basis
5. The colours shown in the maps or diagram and charts of a particular party, alliance or AC are indicative and do not represent them.
6. This publication which includes maps, sheets, graphs and data would be the property under copyright of Datanet only. The user may use these for its internal study, analysis and research purposes. It's public display, re-selling or any commercial uses by the user are not allowed.
7. Datanet has taken due care and caution in compilation and processing of data and allied information, but does not guarantee the accuracy, adequacy or completeness of any information/analysis and will be not responsible for any errors or omissions or for the results obtained from the use of such information/analysis.
8. All the contents for the publication have been culled from various authentic sources and Datanet reasonably believes such sources to be reliable, but does not make any representations, express or implied as to the accuracy or fitness of use of such information. The information or contents of the information/analysis do not constitute advice and should not be relied upon in making (or refraining from making) any decision. Any reliance placed upon the information provided by Datanet is the sole responsibility and strictly at the user's risk.
9. In no event will Datanet be liable for any damages (including, without limitation, damages for loss of business projects, or loss of profits) arising in contract, tort or otherwise from the use of or inability to use any of its contents, or from any action taken (or refrained from being taken) as a result of using the analysis or any of its contents. Datanet its directors, owners, editors, officials, employees, distributor and agents or any associate will not be liable for any errors in the information contained or any consequences arising from the use of the contents of the provided information/analysis.
10. If any provision of these terms and conditions is held invalid or illegal or unenforceable for any reason by any court of competent jurisdiction, such provision shall be severed and the remainder of provisions of the terms and conditions shall continue in full force and effect as if the Term of Use had been executed with the invalid, illegal or unenforceable provision eliminated.
11. If there are any discrepancies in the information provided, please bring it to attention of Datanet for suitable rectification measures.



**Buy Online This Complete Book At**  
**Datanet India eBooks Store**

[www.indiastatpublications.com](http://www.indiastatpublications.com)

or go directly at

[http://www.indiastatpublications.com/  
Assembly\\_factbook/Odisha/Jagatsinghpur/ Balikuda-Ersama](http://www.indiastatpublications.com/Assembly_factbook/Odisha/Jagatsinghpur/Balikuda-Ersama)



**i** indiastat**elections**

ISBN : 978-93-5313-213-2

