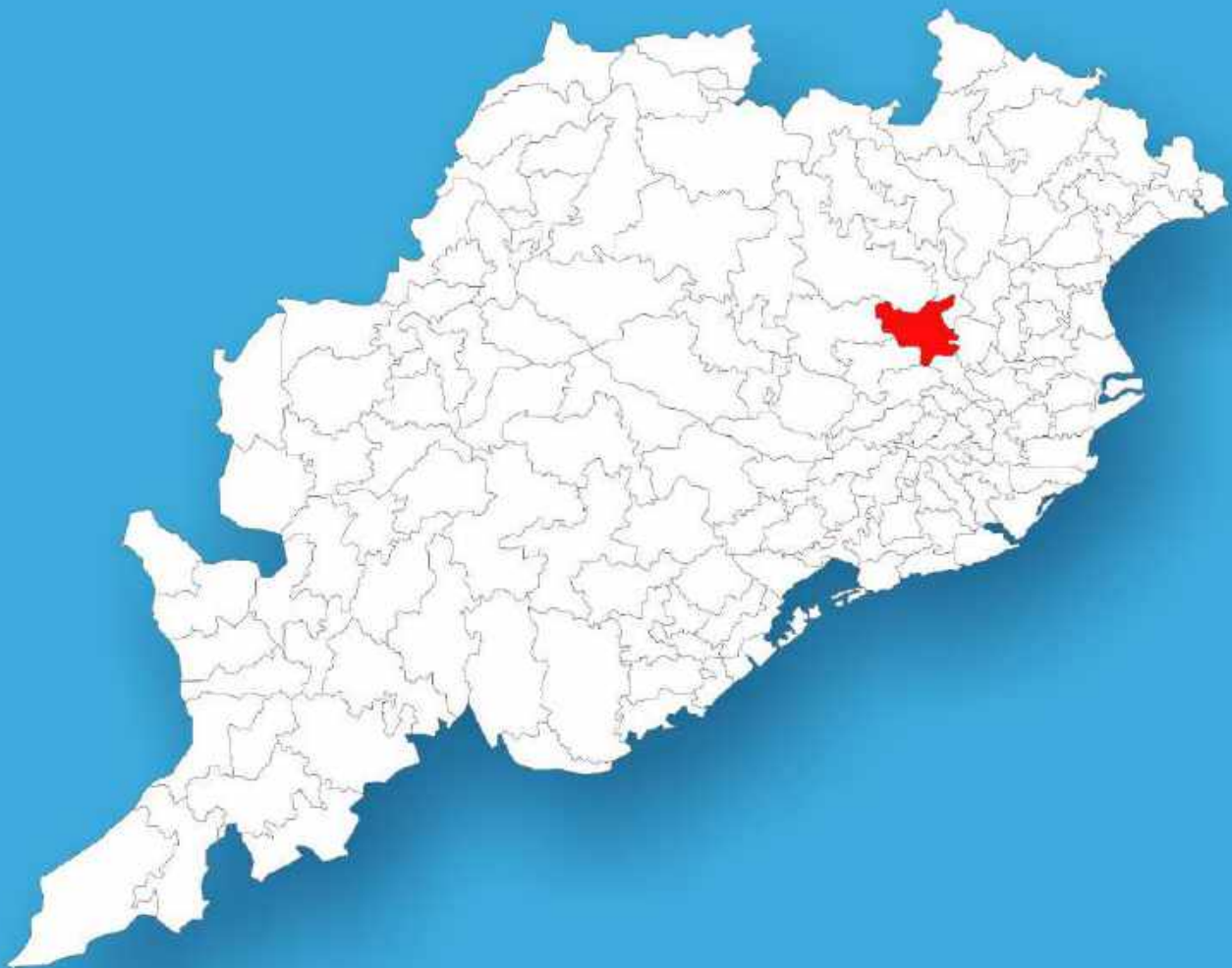




Odisha

Assembly Factbook™

Sukinda Assembly Constituency



Key Electoral Data of Sukinda
Assembly Constituency (Vidhan Sabha)

Odisha

Assembly Factbook™

Sukinda Assembly Constituency



Sukinda Vidhan Sabha

Editor & Director

Dr. R.K. Thukral

Research Editor

Dr. Shafeeq Rahman

Compiled, Researched and Published by Datanet India Pvt. Ltd.

D-100, 1st Floor,

Okhla Industrial Area, Phase-I,
New Delhi- 110020.

Ph.: 91-11- 43580781-84

Email : support@indiastatpublications.com

Website : www.indiastatelections.com

Online Book Store :

www.indiastatpublications.com

Report No. : AFB/OD-054-0125

ISBN : 978-93-5313-295-8

First Edition : January, 2018

Eighth Updated Edition : January, 2025

Price : Rs. 11500/-

US\$ 310

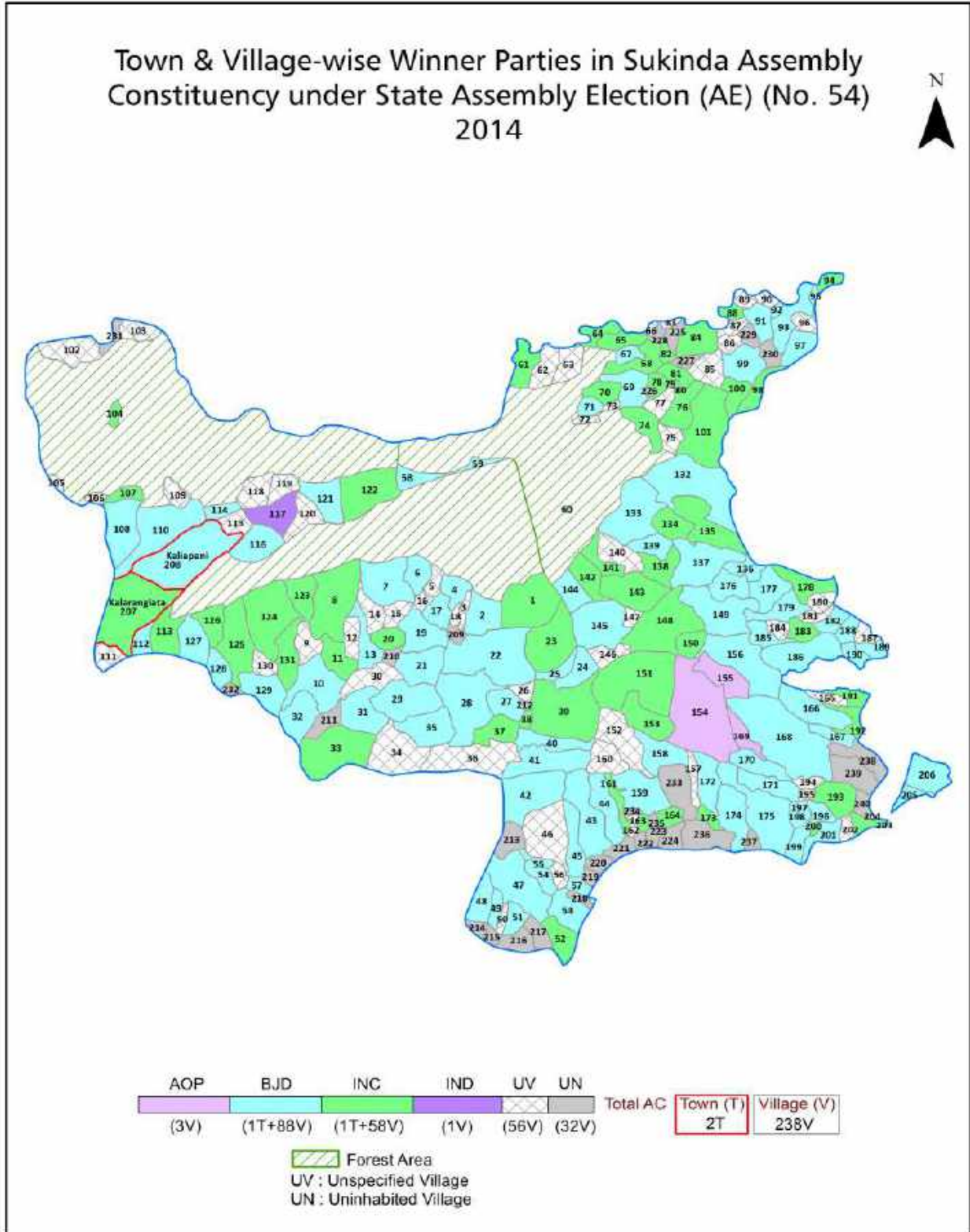
© Datanet India Pvt. Ltd.

All rights reserved. No part of this book may be reproduced, stored in a retrieval system or transmitted in any form or by any means, mechanical photocopying, photographing, scanning, recording or otherwise without the prior written permission of the publisher. Please refer to Disclaimer at page no. 214 for the use of this publication.

Printed in India

No.	Particulars	Page No.
	Introduction	
1	Assembly Constituency - (Vidhan Sabha) at a Glance Features of Assembly as per Delimitation Commission of India (2008)	1-2
	Location and Political Maps	
2	Location Map Boundaries of Assembly Constituency - (Vidhan Sabha in District Boundaries of Assembly Constituency under Parliamentary Constituency - (Lok Sabha) Town & Village-wise Winner Parties- 2024-PE, 2024-AE, 2019-PE, 2019-AE, 2014-PE, 2014-AE, 2009-PE and 2009-AE	3-11
	Administrative Setup (2011)	
3	District Sub-district Towns Villages Inhabited Villages Uninhabited Villages Village Panchayat Intermediate Panchayat	12-23
	Demographics (2011)	
4	Population Households Rural/Urban Population Towns and Villages by Population Size Sex Ratio (Total & 0-6 Years) Religious Population Social Population Literacy Rate	24-25
	Electoral Features	
5	Important Dates of Last Elections Held Electors by Gender Service Electors Voters Voters Turnout Polling Stations & Average Number of Electors per Polling Station Electors by Age Group Present Elected Representatives	26-31
	Historical Summary Election Results	
6	Vote Share of Major Parties Winning Margin (Number & Percentage Polarity of Parties Summary Result of Assembly Segment of Parliamentary Elections 2024, 2019, 2014, 2009, 2004 and 1999 Summary Result of Assembly Elections 2024, 2019, 2014, 2009, 2004, 2000, 1995, 1990, 1985, 1980, 1977, 1974, 1971, 1967, 1961 and 1952	32-55
	Polling Station Level Election Results	
7	Name and Number of Polling Station 2024-PE, 2024-AE, 2019-PE, 2019-AE, 2014-PE, 2014-AE, 2009-PE and 2009-AE Polling Station-wise Electors, Voters & Voters Turnout 2024-PE, 2024-AE, 2019-PE, 2019-AE, 2014-PE, 2014-AE, 2009-PE and 2009-AE Polling Station wise Elections Results 2024-PE, 2024-AE, 2019-PE, 2019-AE, 2014-PE, 2014-AE, 2009-PE and 2009-AE	56-193
	Share of Assembly Constituency	
8	Share of Assembly Constituency - (Vidhan Sabha) in State, District and Parliamentary Constituency - (Lok Sabha)	194
	Socio-Economic Amenities (2011)	
9	Access to Administrative Units Agricultural, Manufacturing and Industrial Commodities Demographic Indicators Education Health & Manpower Drinking Water Supply Sanitation Entertainment and Recreations Infrastructure Power Food Allocation Distribution and Marketing of Agriculture Commodities Infrastructure Transport and Road Infrastructure Communication Banking and Financial Services Land Use Irrigation Source	196-210
10	Abbreviation & Sources	211-212
11	Disclaimer	214

Location & Political Map



Administrative Setup

List of Village Panchayat & Intermediate Panchayat (Block) Name - 2011

Village Name	Village Panchayat Name	Intermediate Panchayat Name
Abhayapur	Olia	Sukinda
Alekhapur	Gobardhanpur	Danagadi
Ambapal	Pimpudia	Sukinda
Ambasara	Kharadi	Sukinda
Amora	Bangarakota	Danagadi
Ampolaba	Ampolaba	Sukinda
Ankura Pal	Chandia	Danagadi
Aradapal	Chingudipal	Sukinda
Arjunjhar	Pimpudia	Sukinda
Atta	Atta	Sukinda
Bada Pingal	Pingal	Sukinda
Badabil	Uchabali	Danagadi
Badasulidiha	Pankpal	Danagadi
Baghuapal	Salijanga	Danagadi
Bahabalpur	Bartanda	Sukinda
Bairimal	Hatibari	Sukinda
Baliapal	Salijanga	Danagadi
Balipada	Kansa	Sukinda
Balipasi	Haripur	Sukinda
Balunga Bandi	Jakhapura	Danagadi
Bambilo	Kuhika	Sukinda
Bandhagan	Bandhagon	Sukinda
Bangarakota	Bangarakota	Danagadi
Banja	Mangaraj Pur	Sukinda
Baradiha	Kharadi	Sukinda
Baragadia	Baragadia	Sukinda
Baragaji	Ransol	Sukinda
Barakhai	Ranagundi	Danagadi
Barapal	Ampolaba	Sukinda

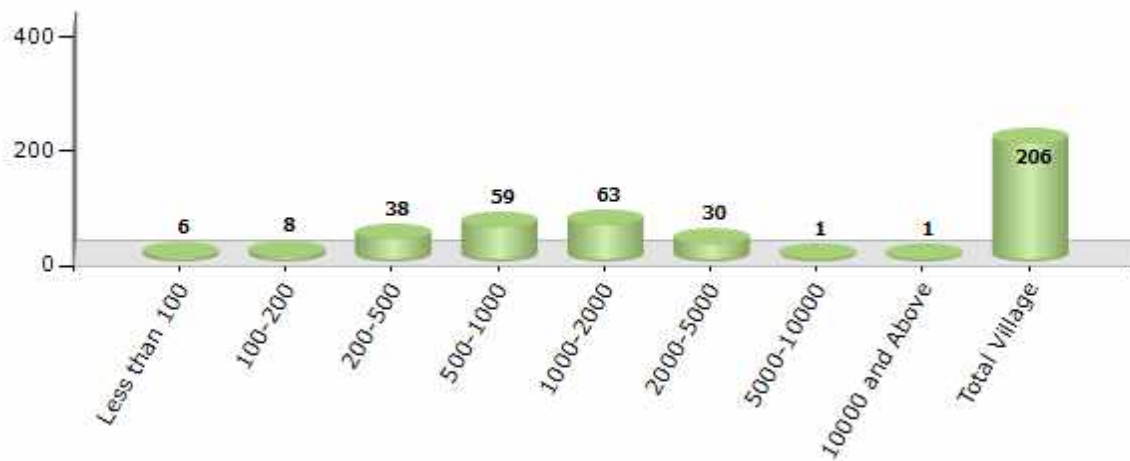
Contd....

Demographic

Number of Villages by Population Size - 2011

Less than 100	100-200	200-500	500-1000	1000-2000	2000-5000	5000-10000	10000 and Above	Total Village
6	8	38	59	63	30	1	1	206

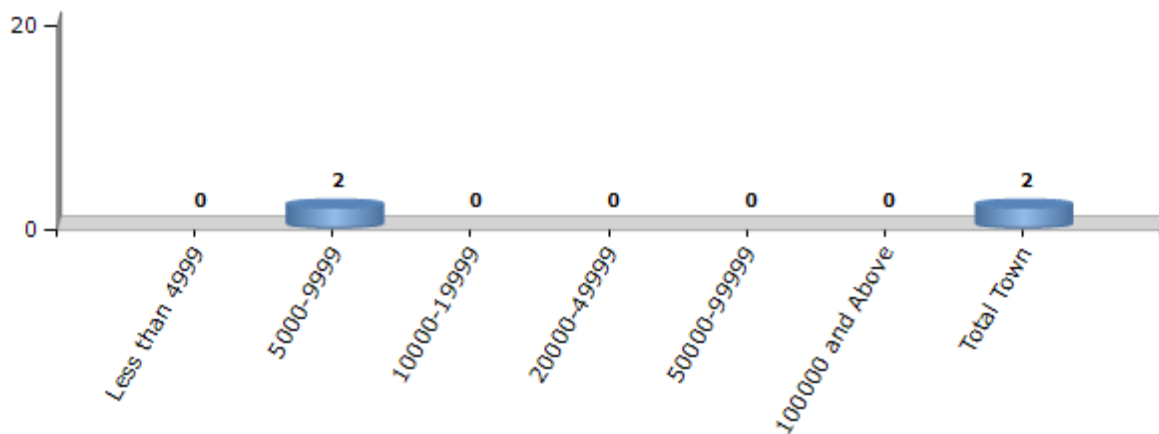
Number of Villages by Population Size - 2011



Number of Towns by Population Size - 2011

Less than 4999	5000-9999	10000-19999	20000-49999	50000-99999	100000 and Above	Total Town
0	2	0	0	0	0	2

Number of Towns by Population Size - 2011



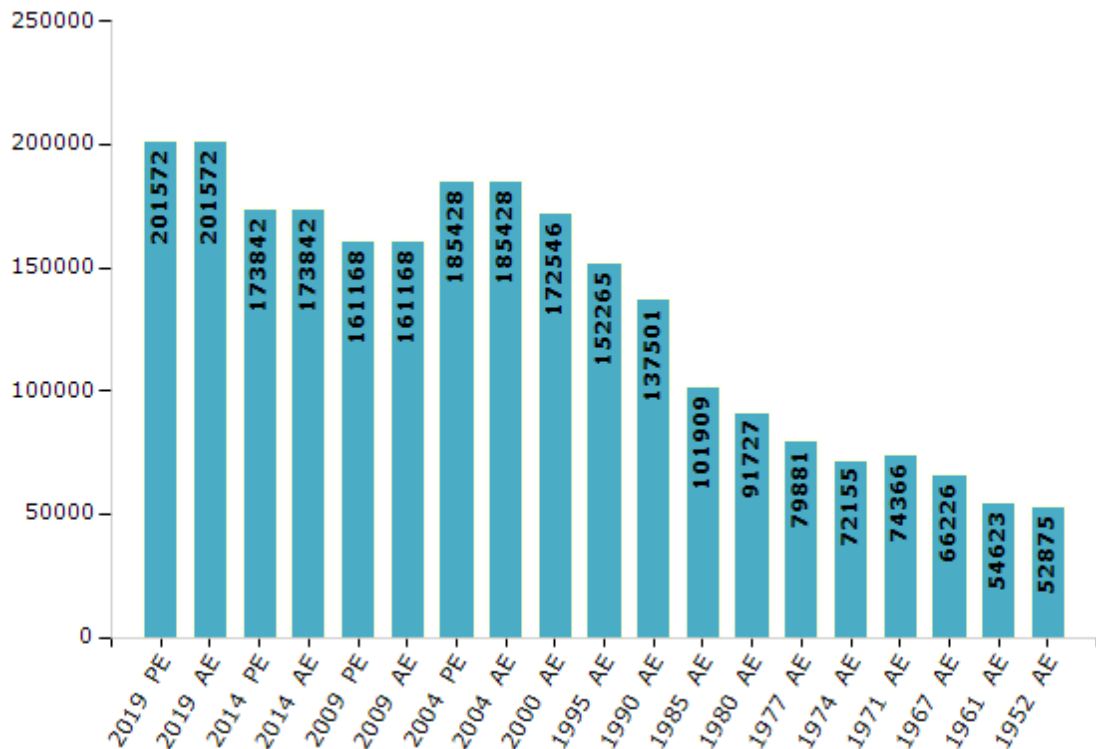
Electoral Features

Electors by Male & Female

Year	Male	Female	Others	Total
2019 PE	103183	98381	8	201572
2019 AE	103183	98381	8	201572
2014 PE	91142	82698	2	173842
2014 AE	91142	82698	2	173842
2009 PE	83590	77578	-	161168
2009 AE	83590	77578	-	161168
2004 PE	95545	89883	-	185428
2004 AE	95545	89883	-	185428
2000 AE	89418	83128	-	172546
1999 PE	-	-	-	-
1995 AE	79417	72848	-	152265

Year	Male	Female	Others	Total
1990 AE	82499	55002	-	137501
1985 AE	53576	48333	-	101909
1980 AE	49097	42630	-	91727
1977 AE	44244	35637	-	79881
1974 AE	38397	33758	-	72155
1971 AE	39643	34723	-	74366
1967 AE	66226	0	-	66226
1961 AE	54623	0	-	54623
1957 AE	-	-	-	-
1952 AE	-	-	-	52875

Number of Electors



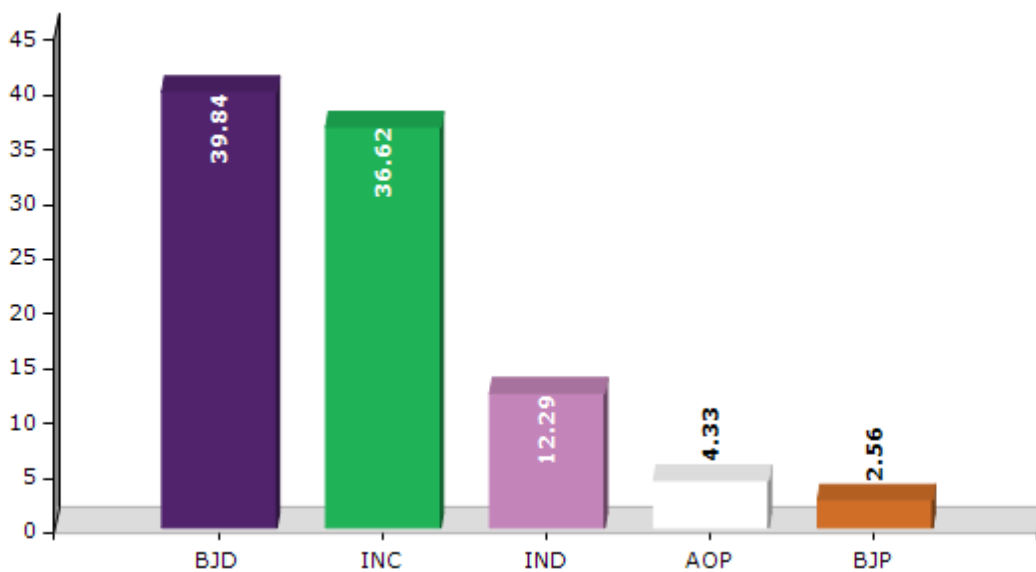
Note : AE : Assembly Election, PE : Assembly Segment of Parliamentary Election

Historical Summary Election Results

Summary Result of Assembly Election - 2014

Candidate Name	Party	Votes	Votes %
Pritiranjana Gharai	BJD	58122	39.84
Sarat Raut	INC	53418	36.62
Pradip Bal Samanta	IND	17927	12.29
Rabindranath Jarika	AOP	6314	4.33
Abhina Kumar Hota	BJP	3738	2.56
Chakradhar Haibru	BMUP	1017	0.7
Dwijendra Kumar Ghose	IND	856	0.59
Braja Kishore Mallik	BSP	846	0.58
Dipaka Kumar Nayak	AAP	828	0.57
Surjit Rout	IND	576	0.39
Ashok Behera	IND	575	0.39
Prafulla Patra	IND	347	0.24
Subhakanta Mohanty	IND	332	0.23
	NOTA	994	0.68

Votes Percentage of Top Parties - 2014



Polling Station Level Election Results

Number and Name of Polling Stations (PS) (2019 AE)

Number of Polling Stations	Name of Polling Stations	Number of Polling Stations	Name of Polling Stations
1	Deogan	22	Sukurangi
2	Aradapal	23	Sukurangi-2
3	Ragada	24	Saruabil
4	Benagadia-1	25	Kumarada
5	Benagadia-2	26	Kansa
6	Chingudipal-1	27	Champajhara
7	Chingudipal-2	28	Tamaka
8	Gurujanga	29	Kiajhara
9	Kaliapani-1	30	Kiajhara
10	Kaliapani-2	31	Panubahali
11	Kaliapani-3	32	Panubahali-2
12	Kaliapani -2	33	Sobara
13	Kalarangi Atta-1	34	Deulakana
14	Kalarangi Atta-2	35	Deulakana
15	Kalarangi Atta-3	36	Patabali
16	Kalarangi Atta-3	37	Gobardhanpur
17	Ransol	38	Phuljhar
18	Mohulakhala	39	Phuljhar-2
19	Kusumundia	40	Manapur-1
20	Bhalukipatala	41	Alekhpur
21	Kakudia	42	Ostapal

Contd....

Polling Station Level Election Results

Polling Station-wise Votes Secured by Overall Top Five Parties in Sukinda Assembly in Assembly Election (AE) under Jajpur Parliamentary Constituency in Odisha (2019)

Number of Polling Station	Winner - Pritiranjana Gharai (BJD)	Runner-up - Pradeep Bal Samanta (BJP)	3rd - Sarat Rout (INC)	4th - Brajamohan Hembram (BMUP)	5th - Dipaka Kumar Nayak (ANC)	NOTA	Other	Total Votes Secured
36	411	410	238	2	5	4	8	1078
37	104	29	607	1	1	1	1	744
38	190	377	177	8	5	19	46	822
39	85	90	28	2	1	1	6	213
40	218	113	532	1	2	2	3	871
41	111	78	214	0	0	0	2	405
42	280	269	261	0	0	0	2	812
43	278	186	116	0	2	4	9	595
44	143	144	66	1	0	0	0	354
45	341	195	159	1	1	0	6	703
46	360	155	238	1	4	7	6	771
47	238	175	280	0	5	2	3	703
48	363	192	396	0	1	5	3	960
49	365	191	209	0	2	1	1	769
50	410	158	169	1	1	1	6	746
51	232	216	55	0	0	4	2	509
52	155	80	137	0	1	0	0	373
53	153	167	28	0	1	0	2	351
54	390	328	206	1	3	1	5	934
55	420	353	168	0	1	0	3	945
56	317	166	142	2	1	1	9	638
57	193	112	205	1	2	4	5	522
58	222	52	208	0	1	0	0	483
59	333	247	168	0	2	2	13	765
60	187	110	203	0	2	8	13	523
61	393	278	253	1	3	4	1	933
62	288	271	196	0	1	2	3	761
63	266	87	470	3	1	4	7	838
64	198	65	376	3	9	6	14	671
65	280	380	175	4	3	12	48	902
66	296	197	69	1	1	2	4	570
67	330	208	89	4	1	7	7	646
67A	282	194	91	1	1	0	4	573
68	286	343	119	6	3	19	21	797
69	348	298	74	1	5	12	14	752

Contd....

Polling Station Level Election Results

Winner, Runner-up and 3rd Party Position & Winning Margin According to Polling Stations in Sukinda Assembly in Assembly Election (AE) under Jajpur Parliamentary Constituency in Odisha (2019)

Polling Station Number	Winner Party	Winner Votes (%)	Runner-up Party	Runner-up Votes (%)	Winning Margin Votes (%)	Third Party	Third Party Votes (%)	Other Votes (%)
70	BJP	343 (50.66)	BJD	166 (24.52)	177 (26.14)	INC	123 (18.17)	45 (6.65)
71	BJD	399 (50.25)	BJP	218 (27.46)	181 (22.79)	INC	168 (21.16)	9 (1.13)
72	BJD	262 (51.68)	INC	134 (26.43)	128 (25.25)	BJP	107 (21.1)	4 (0.79)
73	BJP	279 (53.35)	BJD	217 (41.49)	62 (11.86)	INC	24 (4.59)	3 (0.57)
74	BJP	481 (44.66)	BJD	437 (40.58)	44 (4.08)	INC	123 (11.42)	36 (3.34)
75	BJD	180 (45.34)	BJP	165 (41.56)	15 (3.78)	INC	46 (11.59)	6 (1.51)
76	BJD	399 (53.27)	BJP	226 (30.17)	173 (23.1)	INC	109 (14.55)	15 (2)
77	BJP	504 (47.68)	BJD	377 (35.67)	127 (12.01)	INC	131 (12.39)	45 (4.26)
78	BJD	406 (42.56)	BJP	357 (37.42)	49 (5.14)	INC	147 (15.41)	44 (4.61)
79	BJP	295 (44.76)	BJD	205 (31.11)	90 (13.65)	INC	98 (14.87)	61 (9.26)
80	BJD	369 (52.12)	BJP	258 (36.44)	111 (15.68)	INC	64 (9.04)	17 (2.4)
81	BJD	458 (52.1)	BJP	310 (35.27)	148 (16.83)	INC	93 (10.58)	18 (2.05)
82	BJD	536 (58.32)	BJP	327 (35.58)	209 (22.74)	INC	39 (4.24)	17 (1.85)
83	BJP	247 (43.41)	BJD	233 (40.95)	14 (2.46)	INC	79 (13.88)	10 (1.76)
84	BJP	122 (46.21)	BJD	100 (37.88)	22 (8.33)	INC	33 (12.5)	9 (3.41)
85	BJD	485 (53.89)	BJP	356 (39.56)	129 (14.33)	INC	29 (3.22)	30 (3.33)
86	BJD	330 (46.48)	BJP	260 (36.62)	70 (9.86)	INC	112 (15.77)	8 (1.13)
87	BJP	283 (39.31)	BJD	281 (39.03)	2 (0.28)	INC	111 (15.42)	45 (6.25)
88	BJP	370 (44.63)	BJD	366 (44.15)	4 (0.48)	INC	60 (7.24)	33 (3.98)
89	BJD	401 (45.52)	BJP	391 (44.38)	10 (1.14)	INC	57 (6.47)	32 (3.63)
90	BJD	429 (53.29)	BJP	283 (35.16)	146 (18.13)	INC	28 (3.48)	65 (8.07)
91	BJD	316 (45.53)	BJP	290 (41.79)	26 (3.74)	INC	77 (11.1)	11 (1.59)
92	BJP	563 (52.13)	BJD	461 (42.69)	102 (9.44)	INC	25 (2.31)	31 (2.87)
93	BJP	299 (51.46)	BJD	227 (39.07)	72 (12.39)	INC	29 (4.99)	26 (4.48)
94	BJP	481 (46.88)	BJD	423 (41.23)	58 (5.65)	INC	63 (6.14)	59 (5.75)
95	BJP	642 (62.7)	BJD	290 (28.32)	352 (34.38)	INC	53 (5.18)	39 (3.81)
96	BJD	326 (50)	BJP	293 (44.94)	33 (5.06)	INC	10 (1.53)	23 (3.53)
97	BJP	459 (46.6)	BJD	434 (44.06)	25 (2.54)	INC	65 (6.6)	27 (2.74)
98	BJP	539 (47.7)	BJD	531 (46.99)	8 (0.71)	INC	31 (2.74)	29 (2.57)
99	BJD	268 (52.65)	BJP	209 (41.06)	59 (11.59)	INC	22 (4.32)	10 (1.96)
100	BJD	509 (63.23)	BJP	259 (32.17)	250 (31.06)	INC	16 (1.99)	21 (2.61)
101	BJD	252 (53.16)	BJP	210 (44.3)	42 (8.86)	INC	6 (1.27)	6 (1.27)
102	BJD	396 (56.41)	BJP	275 (39.17)	121 (17.24)	INC	17 (2.42)	14 (1.99)
103	BJD	375 (49.93)	BJP	301 (40.08)	74 (9.85)	INC	38 (5.06)	37 (4.93)
104	BJD	380 (51.56)	BJP	337 (45.73)	43 (5.83)	INC	12 (1.63)	8 (1.09)

Contd....

Socio-Economic Amenities - Rural

Access to Education Facilities

Particulars	Number of Villages (% of Population)				
	Available	Not Available	If Not Available (Distance of Nearest Facility)		
			A	B	C
Govt. Primary School	192 (98)	14 (2)	12 (1)	2 (0)	0 (0)
Private Primary School	6 (4)	200 (96)	0 (0)	0 (0)	0 (0)
Govt. Middle School	108 (71)	98 (29)	36 (13)	44 (11)	13 (2)
Private Middle School	13 (8)	193 (92)	0 (0)	0 (0)	0 (0)
Govt. Secondary School	54 (47)	152 (53)	122 (41)	27 (11)	0 (0)
Private Secondary School	3 (2)	203 (98)	2 (0)	1 (0)	0 (0)
Govt. Senior Secondary School	4 (4)	202 (96)	25 (14)	72 (33)	62 (25)
Private Senior Secondary School	3 (5)	203 (95)	15 (6)	23 (11)	2 (2)
Govt. Arts and Science Degree College	4 (6)	202 (94)	14 (10)	67 (30)	76 (35)
Private Arts and Science Degree College	0 (0)	206 (100)	8 (3)	28 (14)	9 (3)
Govt. Engineering College	0 (0)	206 (100)	0 (0)	0 (0)	0 (0)
Private Engineering College	0 (0)	206 (100)	0 (0)	0 (0)	206 (100)
Govt. Medicine College	0 (0)	206 (100)	0 (0)	0 (0)	206 (100)
Private Medicine College	0 (0)	206 (100)	0 (0)	0 (0)	0 (0)
Govt. Management Institute	0 (0)	206 (100)	0 (0)	0 (0)	98 (49)
Private Management Institute	0 (0)	206 (100)	0 (0)	0 (0)	108 (51)
Govt. Polytechnic	0 (0)	206 (100)	0 (0)	0 (0)	91 (47)
Private Polytechnic	0 (0)	206 (100)	0 (0)	1 (0)	108 (51)
Govt. Vocational Training School/ITI	0 (0)	206 (100)	0 (0)	0 (0)	49 (27)
Private Vocational Training School/ITI	0 (0)	206 (100)	1 (0)	27 (13)	94 (44)
Govt. Non Formal Training Centre	0 (0)	206 (100)	0 (0)	0 (0)	13 (6)
Private Non Formal Training Centre	0 (0)	206 (100)	0 (0)	1 (0)	4 (4)
Govt. School For Disabled	0 (0)	206 (100)	0 (0)	0 (0)	188 (90)
Private School For Disabled	0 (0)	206 (100)	0 (0)	0 (0)	2 (1)
Government Others	0 (0)	206 (100)	0 (0)	0 (0)	3 (3)
Private Others	1 (2)	205 (98)	0 (0)	0 (0)	0 (0)

Note : Distance A : Less than 5 km; B : Between 5-10 km; C : 10+ km.; Source : Data Analysis is based on 2011 Census.

DISCLAIMER

The Terms of Use and Disclaimer of Datanet India Private Limited (hereinafter referred to as "Datanet") for use of this analysis report of **Sukinda Assembly Constituency (Sukinda Vidhan Sabha) :-**

1. **Assembly Factbook™** is a Registered Trade Mark owned by Datanet.
2. All the maps are sketched and graphical representation only and have not been drawn to the scale and also not to represent the actual geographical area or boundary of the unit.
3. The data for the aforesaid analysis is based on authentic sources and has been culled from the various publications of Census, CSO and NSSO for district and block level data, various central and state government departments, Central & State Elections Commissions and the concerned Returning Officers' releases, Electoral Rolls, Election results and allied publications, internal assessment, surveys, estimates and analysis. Therefore, certain adjustment of data at micro level may have been done to arrive closer to the macro data.
4. Data have been provided on an "As Is" and "As AVAILABLE" basis
5. The colours shown in the maps or diagram and charts of a particular party, alliance or AC are indicative and do not represent them.
6. This publication which includes maps, sheets, graphs and data would be the property under copyright of Datanet only. The user may use these for its internal study, analysis and research purposes. It's public display, re-selling or any commercial uses by the user are not allowed.
7. Datanet has taken due care and caution in compilation and processing of data and allied information, but does not guarantee the accuracy, adequacy or completeness of any information/analysis and will be not responsible for any errors or omissions or for the results obtained from the use of such information/analysis.
8. All the contents for the publication have been culled from various authentic sources and Datanet reasonably believes such sources to be reliable, but does not make any representations, express or implied as to the accuracy or fitness of use of such information. The information or contents of the information/analysis do not constitute advice and should not be relied upon in making (or refraining from making) any decision. Any reliance placed upon the information provided by Datanet is the sole responsibility and strictly at the user's risk.
9. In no event will Datanet be liable for any damages (including, without limitation, damages for loss of business projects, or loss of profits) arising in contract, tort or otherwise from the use of or inability to use any of its contents, or from any action taken (or refrained from being taken) as a result of using the analysis or any of its contents. Datanet its directors, owners, editors, officials, employees, distributor and agents or any associate will not be liable for any errors in the information contained or any consequences arising from the use of the contents of the provided information/analysis.
10. If any provision of these terms and conditions is held invalid or illegal or unenforceable for any reason by any court of competent jurisdiction, such provision shall be severed and the remainder of provisions of the terms and conditions shall continue in full force and effect as if the Term of Use had been executed with the invalid, illegal or unenforceable provision eliminated.
11. If there are any discrepancies in the information provided, please bring it to attention of Datanet for suitable rectification measures.

**Buy Online This Complete Book At
Datanet India eBooks Store**

www.indiastatpublications.com

or go directly at

[http://www.indiastatpublications.com/
Assembly_factbook/Odisha/Jajpur/Sukinda](http://www.indiastatpublications.com/Assembly_factbook/Odisha/Jajpur/Sukinda)

 **india**stat**elections**

ISBN : 978-93-5313-295-8

