



Odisha

Assembly Factbook™

Dharmgarh Assembly Constituency



Key Electoral Data of Dharmgarh
Assembly Constituency (Vidhan Sabha)

Odisha

Assembly Factbook™

Dharmgarh Assembly Constituency



Dharmgarh Vidhan Sabha

Editor & Director

Dr. R.K. Thukral

Research Editor

Dr. Shafeeq Rahman

Compiled, Researched and Published by Datanet India Pvt. Ltd.

D-100, 1st Floor,

Okhla Industrial Area, Phase-I,
New Delhi- 110020.

Ph.: 91-11- 43580781-84

Email : support@indiastatpublications.com

Website : www.indiastatelections.com

Online Book Store :

www.indiastatpublications.com

Report No. : AFB/OD-079-0125

ISBN : 978-93-5313-237-8

First Edition : January, 2018

Eighth Updated Edition : January, 2025

Price : Rs. 11500/-

US\$ 310

© **Datanet India Pvt. Ltd.**

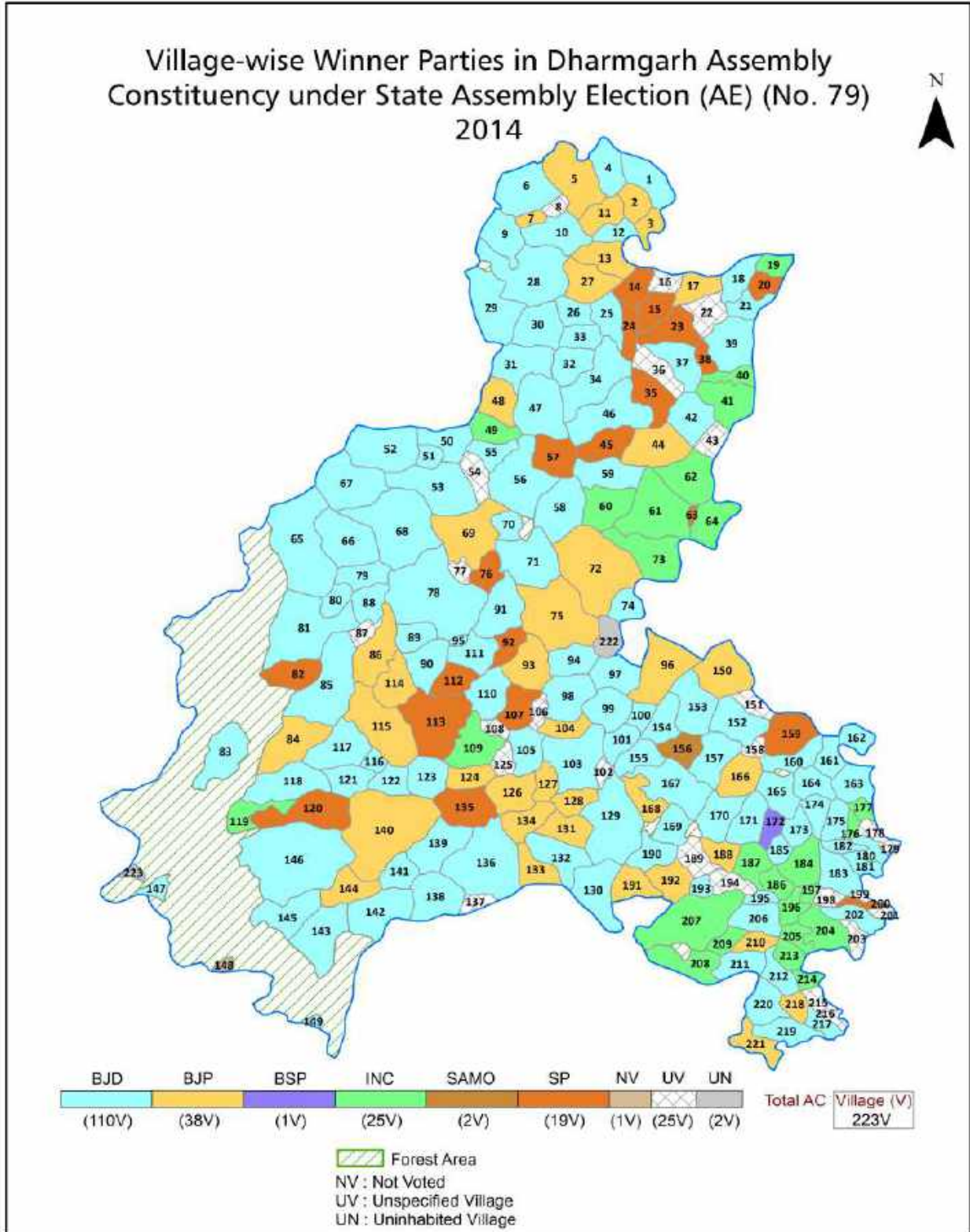
All rights reserved. No part of this book may be reproduced, stored in a retrieval system or transmitted in any form or by any means, mechanical photocopying, photographing, scanning, recording or otherwise without the prior written permission of the publisher. Please refer to Disclaimer at page no. 240 for the use of this publication.

Printed in India

Contents

No.	Particulars	Page No.
	Introduction	
1	Assembly Constituency - (Vidhan Sabha) at a Glance Features of Assembly as per Delimitation Commission of India (2008)	1-2
	Location and Political Maps	
2	Location Map Boundaries of Assembly Constituency - (Vidhan Sabha in District Boundaries of Assembly Constituency under Parliamentary Constituency - (Lok Sabha) Village-wise Winner Parties- 2024-PE, 2024-AE, 2019-PE, 2019-AE, 2014-PE, 2014-AE, 2009-PE and 2009-AE	3-11
	Administrative Setup (2011)	
3	District Sub-district Towns Villages Inhabited Villages Uninhabited Villages Village Panchayat Intermediate Panchayat	12-23
	Demographics (2011)	
4	Population Households Rural/Urban Population Villages by Population Size Sex Ratio (Total & 0-6 Years) Religious Population Social Population Literacy Rate	24-25
	Electoral Features	
5	Important Dates of Last Elections Held Electors by Gender Service Electors Voters Voters Turnout Polling Stations & Average Number of Electors per Polling Station Electors by Age Group Present Elected Representatives	26-31
	Historical Summary Election Results	
6	Vote Share of Major Parties Winning Margin (Number & Percentage Polarity of Parties Summary Result of Assembly Segment of Parliamentary Elections 2024, 2019, 2014, 2009, 2004 and 1999 Summary Result of Assembly Elections 2024, 2019, 2014, 2009, 2004, 2000, 1995, 1990, 1985, 1980, 1977, 1974, 1971, 1967, 1961 and 1957	32-55
	Polling Station Level Election Results	
7	Name and Number of Polling Station 2024-PE, 2024-AE, 2019-PE, 2019-AE, 2014-PE, 2014-AE, 2009-PE and 2009-AE Polling Station-wise Electors, Voters & Voters Turnout 2024-PE, 2024-AE, 2019-PE, 2019-AE, 2014-PE, 2014-AE, 2009-PE and 2009-AE Polling Station wise Elections Results 2024-PE, 2024-AE, 2019-PE, 2019-AE, 2014-PE, 2014-AE, 2009-PE and 2009-AE	56-219
	Share of Assembly Constituency	
8	Share of Assembly Constituency - (Vidhan Sabha) in State, District and Parliamentary Constituency - (Lok Sabha)	220
	Socio-Economic Amenities (2011)	
9	Access to Administrative Units Agricultural, Manufacturing and Industrial Commodities Demographic Indicators Education Health & Manpower Drinking Water Supply Sanitation Entertainment and Recreations Infrastructure Power Food Allocation Distribution and Marketing of Agriculture Commodities Infrastructure Transport and Road Infrastructure Communication Banking and Financial Services Land Use Irrigation Source	222-236
10	Abbreviation & Sources	237-238
11	Disclaimer	240

Location & Political Map



Administrative Setup

List of Village Panchayat & Intermediate Panchayat (Block) Name - 2011

Village Name	Village Panchayat Name	Intermediate Panchayat Name
Ainlajor	Boden	Dharamgarh
Ainli	Ladugaon	Kokasara
Ambaguda	Godiajore	Dharamgarh
Amjor	Bandigaon	Jayapatna
Ampani	Ampani	Kokasara
Arebeda	Ranmal	Jayapatna
Babukenduguda	Deypur	Kalampur
Badabasul	Badabasul	Dharamgarh
Badakenduguda	Kaudola	Kokasara
Badakutru	Badakutru	Kalampur
Badapodaguda	Badpodaguda	Kokasara
Badatemari	Ranmal	Jayapatna
Badfurla	Nandagaon	Dharamgarh
Bagad	Boden	Dharamgarh
Balagaon	Mandal	Kalampur
Balichhada	Deypur	Kalampur
Bandakana	Bandhakana	Kalampur
Bandigaon	Bandigaon	Jayapatna
Bangomunda	Gambhariguda	Kokasara
Banjipadar	Dumerguda	Dharamgarh
Bankapala	Deypur	Kalampur
Barahadanga	Baradonga	Kokasara
Barchhi	Badakutru	Kalampur
Bardoli	Pandigaon	Kalampur
Bargaon	Kalampur	Kalampur
Batiguda	Moter	Kokasara
Behera	Behera	Dharamgarh
Beherguda	Chhan Chan Bahali	Dharamgarh
Bhainri	Mingur	Kalampur

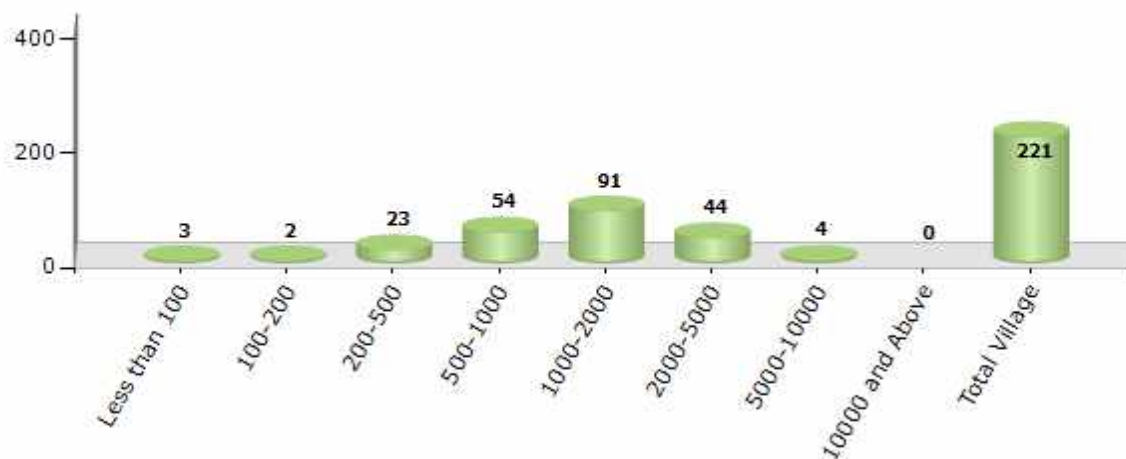
Contd....

Demographic

Number of Villages by Population Size - 2011

Less than 100	100-200	200-500	500-1000	1000-2000	2000-5000	5000-10000	10000 and Above	Total Village
3	2	23	54	91	44	4	0	221

Number of Villages by Population Size - 2011

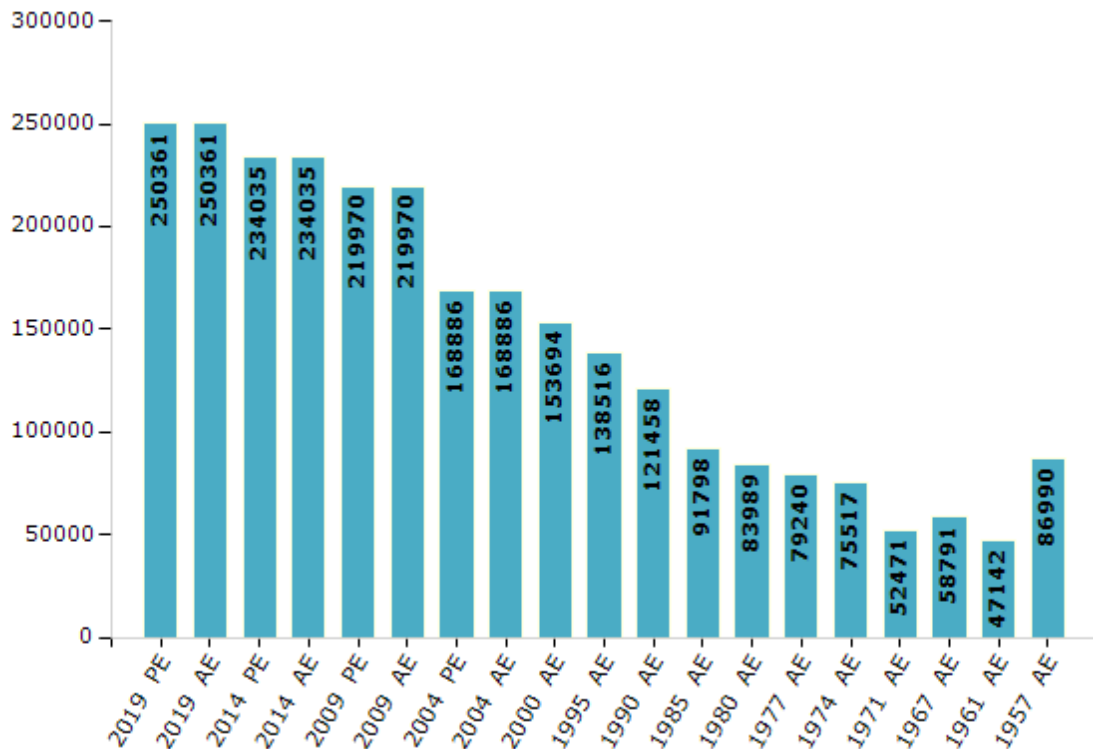


Electoral Features

Electors by Male & Female

Year	Male	Female	Others	Total	Year	Male	Female	Others	Total
2019 PE	127383	122972	6	250361	1990 AE	63196	58262	-	121458
2019 AE	127383	122972	6	250361	1985 AE	44917	46881	-	91798
2014 PE	119333	114702	0	234035	1980 AE	42533	41456	-	83989
2014 AE	119333	114702	0	234035	1977 AE	39193	40047	-	79240
2009 PE	110313	109657	-	219970	1974 AE	37091	38426	-	75517
2009 AE	110313	109657	-	219970	1971 AE	29819	22652	-	52471
2004 PE	85713	83173	-	168886	1967 AE	58791	0	-	58791
2004 AE	85713	83173	-	168886	1961 AE	47142	0	-	47142
2000 AE	78241	75453	-	153694	1957 AE	86990	0	-	86990
1999 PE	-	-	-	-	1952 AE	-	-	-	-
1995 AE	70944	67572	-	138516					

Number of Electors



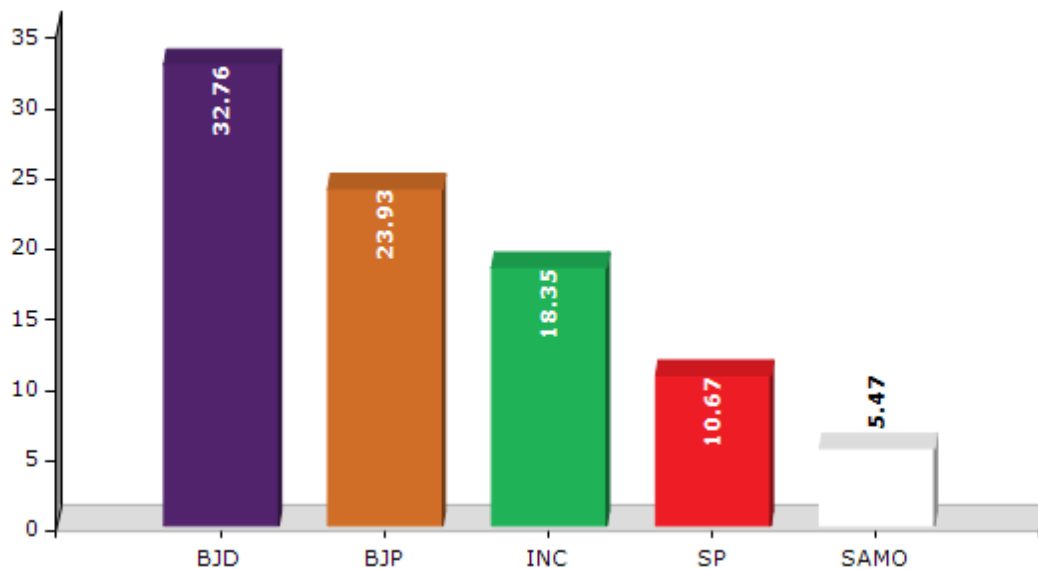
Note : AE : Assembly Election, PE : Assembly Segment of Parliamentary Election

Historical Summary Election Results

Summary Result of Assembly Election - 2014

Candidate Name	Party	Votes	Votes %
Puspendra Singh Deo	BJD	59931	32.76
Rabindra Pattjoshi	BJP	43773	23.93
Tushar Ranjan Pattjoshi	INC	33569	18.35
Dhanugopal	SP	19508	10.67
Digambar Duria	SAMO	10011	5.47
Bishnu Prasad Agrawal	AAP	3789	2.07
Sibaram Naik	BSP	2341	1.28
Sushanta Kumar Naik	CPI	2296	1.26
Shyam Sundar Panda	AOP	2092	1.14
Akrur Prasad Sethia	KS	1041	0.57
Kuber Sahu	SKD	895	0.49
	NOTA	3669	2.01

Votes Percentage of Top Parties - 2014



Polling Station Level Election Results

Number and Name of Polling Stations (PS) (2019 AE)

Number of Polling Stations	Name of Polling Stations	Number of Polling Stations	Name of Polling Stations
1	Kirkakani	22	Sandhikuliari-2
2	Mukhiguda	23	Chhilipa-1
3	Keramunda	24	Chhilipa-2
4	Dumeraguda	25	Kuturu
5	Kandamal	26	Bikramaguda-1
6	Banjipadar	27	Bikramaguda-2
7	Sagunabhadi	28	Godabhanja
8	Tipiguda	29	Rajamoter-1
9	Raenaguda	30	Rajamoter-2
10	Raenaguda	31	Thanat
11	Bokrasil	32	Kebidi
12	Kotmer	33	Chilichila
13	Gataguda	34	Chilichila
14	Luhagan	35	Brahmanachhendia
15	Kanagan-1	36	Meraghara
16	Kanagan-2	37	Taranja
17	Kankeri 1	38	Tambachhada
18	Kankeri-2	39	Telipalas
19	Kankeri 3	40	Khanatara
20	Budimunda	41	Matia
21	Sandhikuliari	42	Khairapadar 1

Contd....

Polling Station Level Election Results

Polling Station-wise Votes Secured by Overall Top Five Parties in Dharmgarh Assembly in Assembly Election (AE) under Kalahandi Parliamentary Constituency in Odisha (2019)

Number of Polling Station	Winner - Mousadhi Bag (BJD)	Runner-up - Ananta Pratap Deo (BJP)	3rd - Digambar Duria (INC)	4th - Rabindra Kumar Pattjoshi (IND)	5th - Jubaraj Parabhoje (BSP)	NOTA	Other	Total Votes Secured
36	216	151	218	42	6	8	34	675
37	282	110	234	230	8	9	36	909
38	38	24	309	162	5	2	16	556
39	145	142	169	236	12	5	20	729
40	291	294	54	113	4	3	17	776
41	66	102	74	103	2	2	14	363
42	74	82	305	36	5	3	25	530
43	232	253	29	37	3	10	17	581
44	275	404	103	136	16	22	50	1006
45	227	173	36	66	1	12	22	537
46	105	61	127	126	5	4	15	443
47	186	213	67	52	4	8	16	546
48	328	153	184	7	5	18	18	713
49	216	234	102	58	1	7	33	651
50	84	115	25	48	3	0	18	293
51	293	549	97	19	5	14	17	994
52	209	244	268	26	5	6	52	810
53	160	186	68	61	1	4	27	507
54	195	133	47	101	0	2	12	490
55	77	10	273	13	1	3	80	457
56	274	170	145	65	2	4	23	683
57	375	310	32	17	5	5	10	754
58	187	195	152	17	4	2	9	566
59	167	163	115	118	5	7	20	595
60	149	337	132	135	7	15	33	808
61	139	202	86	48	3	4	11	493
62	288	202	136	40	6	15	32	719
63	96	245	238	55	6	14	28	682
64	129	229	179	17	6	2	25	587
65	240	315	252	18	6	4	13	848
66	403	306	106	38	10	13	34	910
67	323	189	64	68	9	12	29	694
68	266	117	79	14	6	9	9	500
69	250	246	131	18	7	10	17	679
70	209	160	16	288	10	4	29	716

Contd....

Polling Station Level Election Results

Winner, Runner-up and 3rd Party Position & Winning Margin According to Polling Stations in Dharmgarh Assembly in Assembly Election (AE) under Kalahandi Parliamentary Constituency in Odisha (2019)

Polling Station Number	Winner Party	Winner Votes (%)	Runner-up Party	Runner-up Votes (%)	Winning Margin Votes (%)	Third Party	Third Party Votes (%)	Other Votes (%)
71	INC	298 (36.21)	BJD	230 (27.95)	68 (8.26)	BJP	141 (17.13)	154 (18.71)
72	IND (RKP)	364 (45.16)	INC	159 (19.73)	205 (25.43)	BJD	139 (17.25)	144 (17.87)
73	BJD	304 (36.32)	BJP	290 (34.65)	14 (1.67)	INC	85 (10.16)	158 (18.88)
74	BJD	168 (30.77)	IND (RKP)	162 (29.67)	6 (1.1)	BJP	116 (21.25)	100 (18.32)
75	IND (RKP)	227 (38.22)	INC	178 (29.97)	49 (8.25)	BJD	101 (17)	88 (14.81)
76	BJD	232 (44.62)	BJP	138 (26.54)	94 (18.08)	IND (RKP)	69 (13.27)	81 (15.58)
77	INC	311 (51.49)	IND (RKP)	111 (18.38)	200 (33.11)	BJD	89 (14.74)	93 (15.4)
78	BJD	158 (32.85)	BJP	148 (30.77)	10 (2.08)	INC	145 (30.15)	30 (6.24)
79	BJD	318 (48.7)	BJP	192 (29.4)	126 (19.3)	INC	109 (16.69)	34 (5.21)
80	INC	389 (41.34)	BJD	250 (26.57)	139 (14.77)	BJP	156 (16.58)	146 (15.52)
81	INC	407 (55.22)	BJD	160 (21.71)	247 (33.51)	BJP	95 (12.89)	75 (10.18)
82	INC	359 (56.89)	BJD	182 (28.84)	177 (28.05)	BJP	54 (8.56)	36 (5.71)
83	BJP	420 (46.41)	BJD	266 (29.39)	154 (17.02)	INC	157 (17.35)	62 (6.85)
84	INC	328 (33.71)	BJD	292 (30.01)	36 (3.7)	BJP	159 (16.34)	194 (19.94)
85	INC	308 (38.12)	BJP	232 (28.71)	76 (9.41)	BJD	130 (16.09)	138 (17.08)
86	INC	118 (40.27)	BJP	92 (31.4)	26 (8.87)	IND (RKP)	46 (15.7)	37 (12.63)
87	BJD	314 (43.55)	BJP	242 (33.56)	72 (9.99)	INC	135 (18.72)	30 (4.16)
88	BJD	374 (51.02)	BJP	206 (28.1)	168 (22.92)	INC	97 (13.23)	56 (7.64)
89	BJP	292 (45.7)	BJD	161 (25.2)	131 (20.5)	INC	128 (20.03)	58 (9.08)
90	BJP	264 (31.54)	INC	207 (24.73)	57 (6.81)	IND (RKP)	182 (21.74)	184 (21.98)
91	INC	303 (37.09)	BJP	298 (36.47)	5 (0.62)	BJD	95 (11.63)	121 (14.81)
92	INC	120 (37.5)	BJP	68 (21.25)	52 (16.25)	IND (RKP)	59 (18.44)	73 (22.81)
93	BJD	147 (32.31)	BJP	133 (29.23)	14 (3.08)	INC	110 (24.18)	65 (14.29)
94	BJD	193 (42.14)	BJP	100 (21.83)	93 (20.31)	IND (RKP)	77 (16.81)	88 (19.21)
95	BJD	250 (38.94)	BJP	150 (23.36)	100 (15.58)	IND (RKP)	109 (16.98)	133 (20.72)
96	BJD	107 (29.97)	IND (RKP)	82 (22.97)	25 (7)	INC	72 (20.17)	96 (26.89)
97	BJD	267 (41.65)	IND (RKP)	140 (21.84)	127 (19.81)	BJP	115 (17.94)	119 (18.56)
98	BJD	173 (29.73)	IND (RKP)	145 (24.91)	28 (4.82)	INC	122 (20.96)	142 (24.4)
99	BJD	218 (34.6)	BJP	184 (29.21)	34 (5.39)	IND (RKP)	113 (17.94)	115 (18.25)
100	INC	280 (30.17)	BJD	244 (26.29)	36 (3.88)	IND (RKP)	226 (24.35)	178 (19.18)
101	BJP	372 (37.8)	BJD	290 (29.47)	82 (8.33)	IND (RKP)	203 (20.63)	119 (12.09)
102	BJD	153 (34.77)	INC	116 (26.36)	37 (8.41)	IND (RKP)	82 (18.64)	89 (20.23)
103	BJD	237 (42.02)	IND (RKP)	170 (30.14)	67 (11.88)	BJP	91 (16.13)	66 (11.7)
104	BJD	362 (66.18)	BJP	81 (14.81)	281 (51.37)	IND (RKP)	51 (9.32)	53 (9.69)
105	BJD	515 (51.71)	BJP	219 (21.99)	296 (29.72)	INC	93 (9.34)	169 (16.97)

Contd....

Socio-Economic Amenities - Rural

Access to Education Facilities

Particulars	Number of Villages (% of Population)				
	Available	Not Available	If Not Available (Distance of Nearest Facility)		
			A	B	C
Govt. Primary School	219 (100)	2 (0)	2 (0)	0 (0)	0 (0)
Private Primary School	12 (9)	209 (91)	0 (0)	0 (0)	0 (0)
Govt. Middle School	153 (84)	68 (16)	37 (9)	26 (5)	2 (1)
Private Middle School	11 (8)	210 (92)	1 (0)	0 (0)	0 (0)
Govt. Secondary School	67 (49)	154 (51)	97 (31)	46 (16)	0 (0)
Private Secondary School	6 (3)	215 (97)	6 (2)	2 (1)	0 (0)
Govt. Senior Secondary School	11 (11)	210 (89)	47 (18)	64 (24)	75 (35)
Private Senior Secondary School	7 (9)	214 (91)	7 (2)	6 (3)	7 (3)
Govt. Arts and Science Degree College	6 (7)	215 (93)	22 (6)	41 (15)	92 (43)
Private Arts and Science Degree College	4 (5)	217 (95)	12 (5)	34 (16)	11 (4)
Govt. Engineering College	0 (0)	221 (100)	8 (3)	17 (10)	196 (87)
Private Engineering College	0 (0)	221 (100)	0 (0)	0 (0)	0 (0)
Govt. Medicine College	0 (0)	221 (100)	2 (1)	3 (1)	216 (98)
Private Medicine College	0 (0)	221 (100)	0 (0)	0 (0)	0 (0)
Govt. Management Institute	0 (0)	221 (100)	0 (0)	0 (0)	221 (100)
Private Management Institute	0 (0)	221 (100)	0 (0)	0 (0)	0 (0)
Govt. Polytechnic	0 (0)	221 (100)	2 (1)	1 (0)	20 (9)
Private Polytechnic	0 (0)	221 (100)	5 (2)	7 (3)	8 (5)
Govt. Vocational Training School/ITI	2 (3)	219 (97)	7 (4)	13 (6)	134 (57)
Private Vocational Training School/ITI	0 (0)	221 (100)	0 (0)	0 (0)	1 (0)
Govt. Non Formal Training Centre	1 (3)	220 (97)	6 (3)	10 (5)	108 (46)
Private Non Formal Training Centre	0 (0)	221 (100)	0 (0)	0 (0)	0 (0)
Govt. School For Disabled	0 (0)	221 (100)	6 (3)	10 (5)	114 (45)
Private School For Disabled	0 (0)	221 (100)	0 (0)	0 (0)	2 (1)
Government Others	0 (0)	221 (100)	0 (0)	0 (0)	1 (0)
Private Others	0 (0)	221 (100)	0 (0)	0 (0)	0 (0)

Note : Distance A : Less than 5 km; B : Between 5-10 km; C : 10+ km.; Source : Data Analysis is based on 2011 Census.

DISCLAIMER

The Terms of Use and Disclaimer of Datanet India Private Limited (hereinafter referred to as "Datanet") for use of this analysis report of **Dharmgarh Assembly Constituency (Dharmgarh Vidhan Sabha)** :-

1. **Assembly Factbook™** is a Registered Trade Mark owned by Datanet.
2. All the maps are sketched and graphical representation only and have not been drawn to the scale and also not to represent the actual geographical area or boundary of the unit.
3. The data for the aforesaid analysis is based on authentic sources and has been culled from the various publications of Census, CSO and NSSO for district and block level data, various central and state government departments, Central & State Elections Commissions and the concerned Returning Officers' releases, Electoral Rolls, Election results and allied publications, internal assessment, surveys, estimates and analysis. Therefore, certain adjustment of data at micro level may have been done to arrive closer to the macro data.
4. Data have been provided on an "As Is" and "As AVAILABLE" basis
5. The colours shown in the maps or diagram and charts of a particular party, alliance or AC are indicative and do not represent them.
6. This publication which includes maps, sheets, graphs and data would be the property under copyright of Datanet only. The user may use these for its internal study, analysis and research purposes. It's public display, re-selling or any commercial uses by the user are not allowed.
7. Datanet has taken due care and caution in compilation and processing of data and allied information, but does not guarantee the accuracy, adequacy or completeness of any information/analysis and will be not responsible for any errors or omissions or for the results obtained from the use of such information/analysis.
8. All the contents for the publication have been culled from various authentic sources and Datanet reasonably believes such sources to be reliable, but does not make any representations, express or implied as to the accuracy or fitness of use of such information. The information or contents of the information/analysis do not constitute advice and should not be relied upon in making (or refraining from making) any decision. Any reliance placed upon the information provided by Datanet is the sole responsibility and strictly at the user's risk.
9. In no event will Datanet be liable for any damages (including, without limitation, damages for loss of business projects, or loss of profits) arising in contract, tort or otherwise from the use of or inability to use any of its contents, or from any action taken (or refrained from being taken) as a result of using the analysis or any of its contents. Datanet its directors, owners, editors, officials, employees, distributor and agents or any associate will not be liable for any errors in the information contained or any consequences arising from the use of the contents of the provided information/analysis.
10. If any provision of these terms and conditions is held invalid or illegal or unenforceable for any reason by any court of competent jurisdiction, such provision shall be severed and the remainder of provisions of the terms and conditions shall continue in full force and effect as if the Term of Use had been executed with the invalid, illegal or unenforceable provision eliminated.
11. If there are any discrepancies in the information provided, please bring it to attention of Datanet for suitable rectification measures.

**Buy Online This Complete Book At
Datanet India eBooks Store**

www.indiastatpublications.com

or go directly at

[http://www.indiastatpublications.com/
Assembly_factbook/Odisha/Kalahandi/ Dharmgarh](http://www.indiastatpublications.com/Assembly_factbook/Odisha/Kalahandi/Dharmgarh)

 **india**stat**elections**

ISBN : 978-93-5313-237-8

